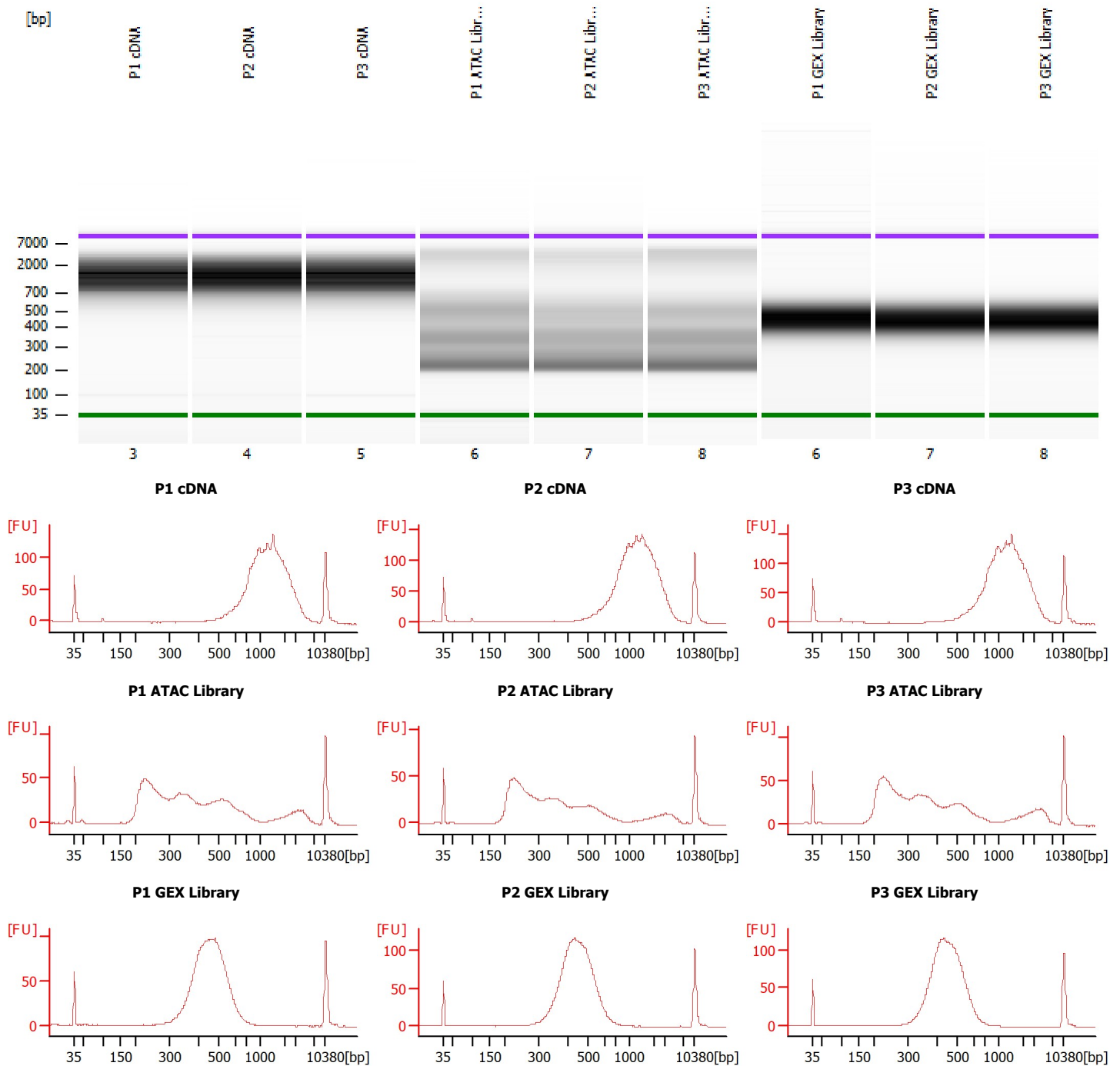


Assay Class: High Sensitivity DNA Assay  
Comparison: C:\...\t\Comparison\ComparisonFile0\_High Sensitivity DNA Assay.xac

Created: 10/2/2023 1:34:13 PM  
Modified: 10/2/2023 1:35:37 PM

**Electrophoresis File Run Summary**



Assay Class: High Sensitivity DNA Assay  
 Comparison C:\...t\Comparison\ComparisonFile0\_High Sensitivity DNA Assay.xac

Created: 10/2/2023 1:34:13 PM  
 Modified: 10/2/2023 1:35:37 PM

**Electrophoresis File Run Summary (Comparison Summary)**

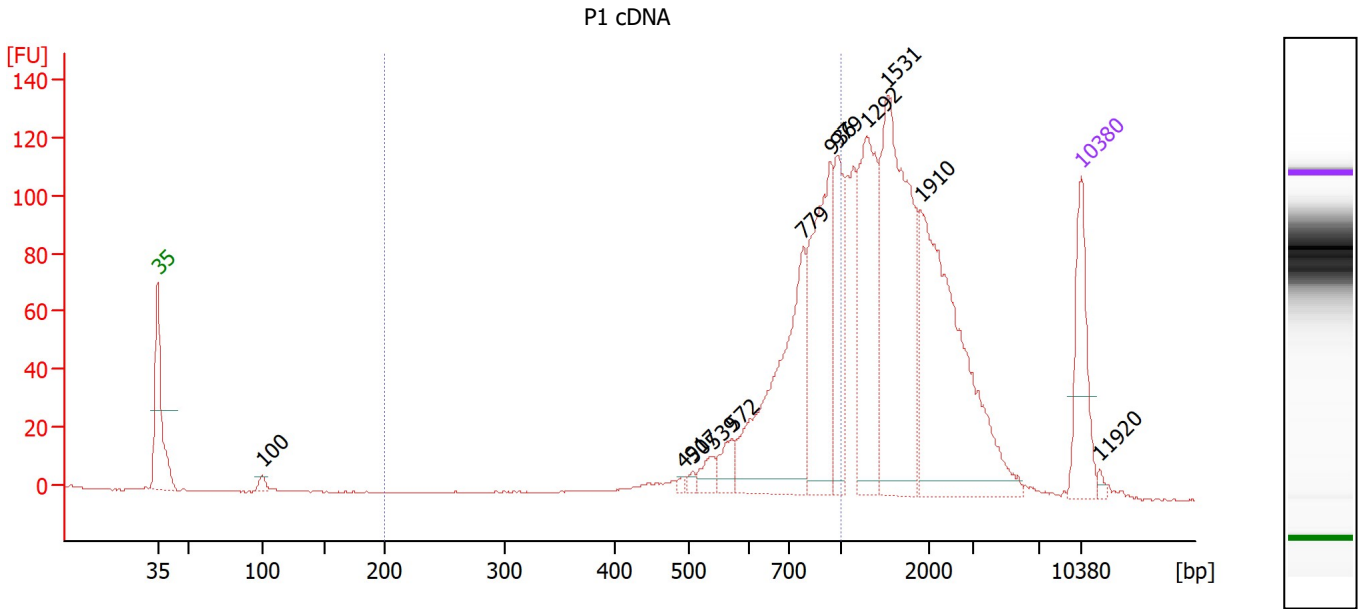
Sample Name	Sample Comment	File
P1 cDNA		C:\...iles (x86)\Agilent\2100 bioanalyzer\2100 expert\data\2023-09-26\10XSC0296 cDNA & ATAC Library.xad
P2 cDNA		C:\...iles (x86)\Agilent\2100 bioanalyzer\2100 expert\data\2023-09-26\10XSC0296 cDNA & ATAC Library.xad
P3 cDNA		C:\...iles (x86)\Agilent\2100 bioanalyzer\2100 expert\data\2023-09-26\10XSC0296 cDNA & ATAC Library.xad
P1 ATAC Library		C:\...iles (x86)\Agilent\2100 bioanalyzer\2100 expert\data\2023-09-26\10XSC0296 cDNA & ATAC Library.xad
P2 ATAC Library		C:\...iles (x86)\Agilent\2100 bioanalyzer\2100 expert\data\2023-09-26\10XSC0296 cDNA & ATAC Library.xad
P3 ATAC Library		C:\...iles (x86)\Agilent\2100 bioanalyzer\2100 expert\data\2023-09-26\10XSC0296 cDNA & ATAC Library.xad
P1 GEX Library		C:\...2100 expert\data\2023-10-02\Bioanalyzer1_High Sensitivity DNA
P2 GEX Library		C:\...2100 expert\data\2023-10-02\Bioanalyzer1_High Sensitivity DNA
P3 GEX Library		C:\...2100 expert\data\2023-10-02\Bioanalyzer1_High Sensitivity DNA

**Comparison Comments :**

Assay Class: High Sensitivity DNA Assay  
 Comparison C:\...\t\Comparison\ComparisonFile0\_High Sensitivity DNA Assay.xac

Created: 10/2/2023 1:34:13 PM  
 Modified: 10/2/2023 1:35:37 PM

**Electropherogram Summary**



**Overall Results for sample 1 : P1 cDNA**

Number of peaks found: 12                      Corr. Area 1: 598.1  
 Noise: 0.2

**Peak table for sample 1 : P1 cDNA**

Peak	Size [bp]	Conc. [pg/μl]	Molarity [pmol/l]	Observations
1	35	125.00	5,411.3	Lower Marker
2	100	9.25	139.8	
3	491	3.89	12.0	
4	507	5.89	17.6	
5	539	18.07	50.8	
6	572	24.50	64.9	
7	779	235.54	458.0	
8	936	193.59	313.3	
9	979	86.69	134.1	
10	1,292	173.32	203.3	
11	1,531	277.20	274.3	
12	1,910	284.12	225.4	
13	10,380	75.00	10.9	Upper Marker
14	11,920	0.00	0.0	

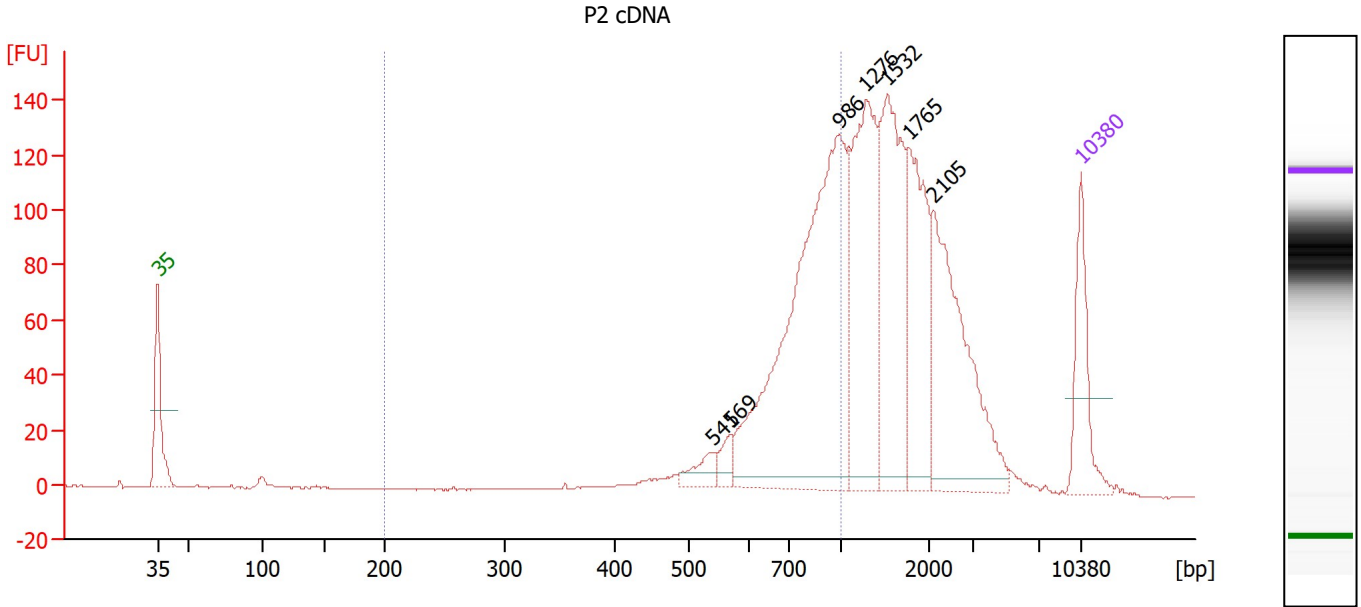
**Region table for sample 1 : P1 cDNA**

From [bp]	To [bp]	Corr. Area	% of Total	Average Size [bp]	Size distribution in CV [%]	Conc. [pg/μl]	Molarity [pmol/l]	Color
200	1,000	598.1	36	775	18.6	569.13	1,164.5	Blue

Assay Class: High Sensitivity DNA Assay  
 Comparison: C:\...t\Comparison\ComparisonFile0\_High Sensitivity DNA Assay.xac

Created: 10/2/2023 1:34:13 PM  
 Modified: 10/2/2023 1:35:37 PM

**Electropherogram Summary Continued ...**



**Overall Results for sample 2 : P2 cDNA**

Number of peaks found: 7                      Corr. Area 1: 690.4  
 Noise: 0.2

**Peak table for sample 2 : P2 cDNA**

Peak	Size [bp]	Conc. [pg/μl]	Molarity [pmol/l]	Observations
1	35	125.00	5,411.3	Lower Marker
2	541	26.54	74.4	
3	569	20.44	54.4	
4	986	550.63	846.2	
5	1,276	237.61	282.3	
6	1,532	216.88	214.5	
7	1,765	159.05	136.5	
8	2,105	216.46	155.8	
9	10,380	75.00	10.9	Upper Marker

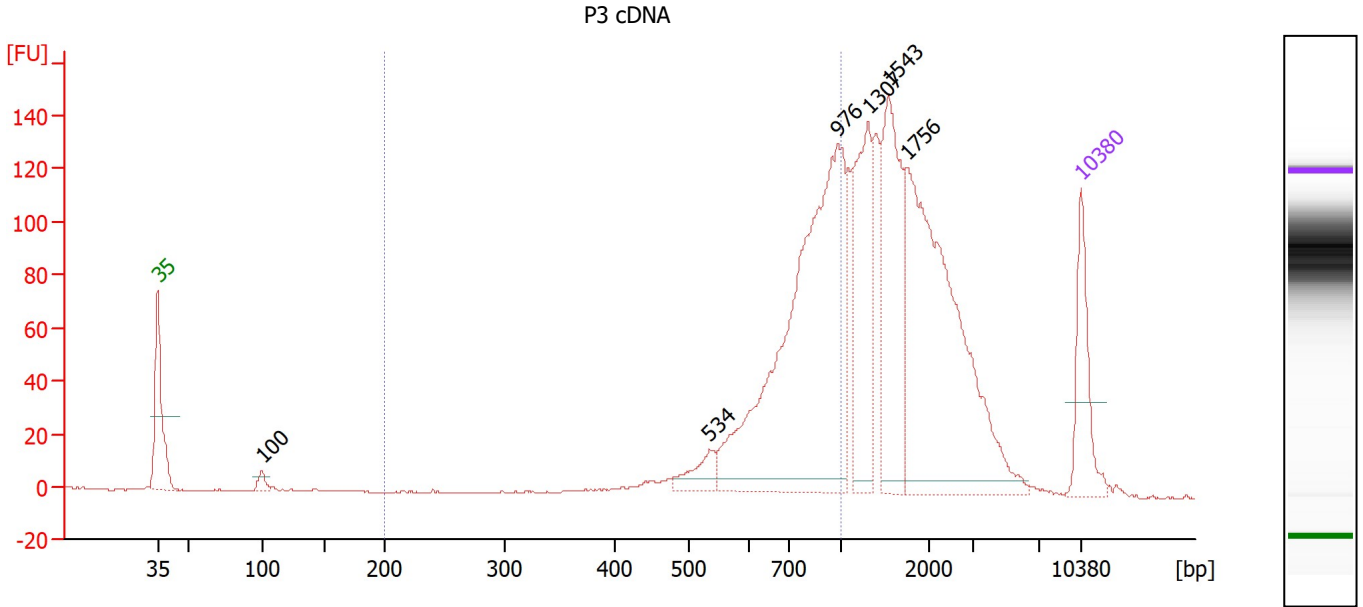
**Region table for sample 2 : P2 cDNA**

From [bp]	To [bp]	Corr. Area	% of Total	Average Size [bp]	Size distribution in CV [%]	Conc. [pg/μl]	Molarity [pmol/l]	Color
200	1,000	690.4	36	766	20.1	624.96	1,314.1	Blue

Assay Class: High Sensitivity DNA Assay  
 Comparison C:\...t\Comparison\ComparisonFile0\_High Sensitivity DNA Assay.xac

Created: 10/2/2023 1:34:13 PM  
 Modified: 10/2/2023 1:35:37 PM

**Electropherogram Summary Continued ...**



**Overall Results for sample 3 : P3 cDNA**

Number of peaks found: 6                      Corr. Area 1: 693.9  
 Noise: 0.2

**Peak table for sample 3 : P3 cDNA**

Peak	Size [bp]	Conc. [pg/μl]	Molarity [pmol/l]	Observations
1	35	125.00	5,411.3	Lower Marker
2	100	13.60	206.6	
3	534	35.90	101.8	
4	976	590.53	916.7	
5	1,307	165.46	191.8	
6	1,543	197.71	194.1	
7	1,756	425.52	367.1	
8	10,380	75.00	10.9	Upper Marker

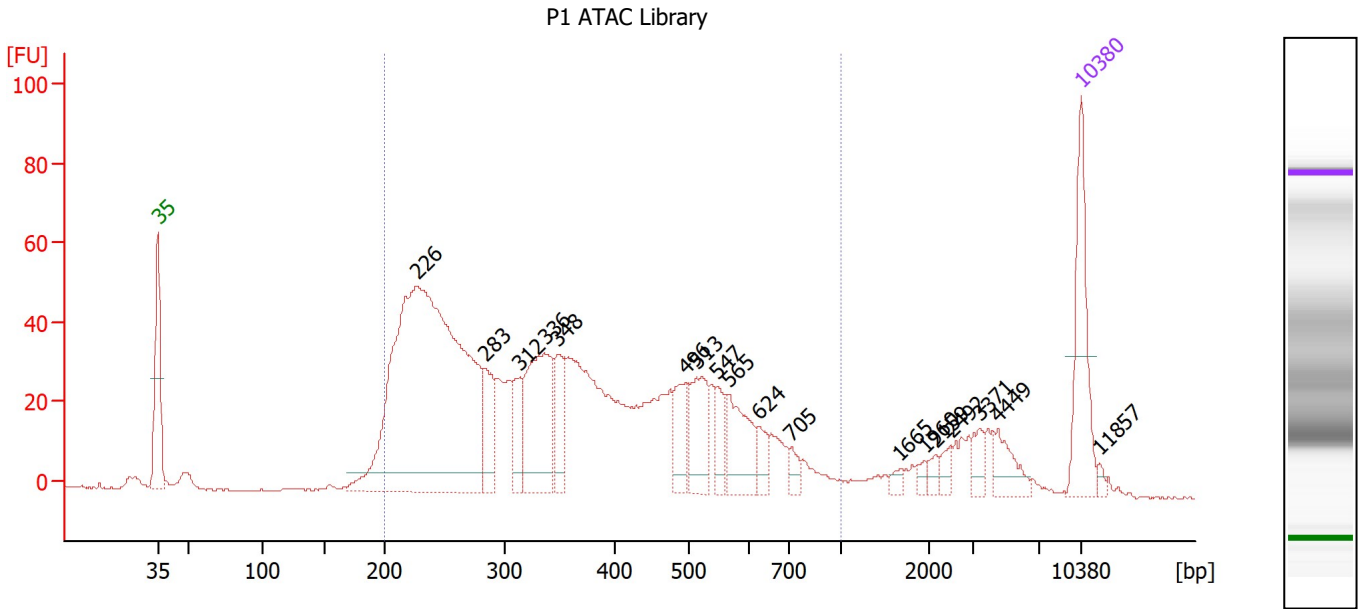
**Region table for sample 3 : P3 cDNA**

From [bp]	To [bp]	Corr. Area	% of Total	Average Size [bp]	Size distribution in CV [%]	Conc. [pg/μl]	Molarity [pmol/l]	Color
200	1,000	693.9	37	767	19.3	646.41	1,344.0	Blue

Assay Class: High Sensitivity DNA Assay  
 Comparison: C:\...\t\Comparison\ComparisonFile0\_High Sensitivity DNA Assay.xac

Created: 10/2/2023 1:34:13 PM  
 Modified: 10/2/2023 1:35:37 PM

**Electropherogram Summary Continued ...**



**Overall Results for sample 4 : P1 ATAC Library**

Number of peaks found: 18      Corr. Area 1: 1,209.2  
 Noise: 0.2

**Peak table for sample 4 : P1 ATAC Library**

Peak	Size [bp]	Conc. [pg/μl]	Molarity [pmol/l]	Observations
1	35	125.00	5,411.3	Lower Marker
2	226	777.15	5,206.8	
3	283	55.93	299.1	
4	312	38.12	184.9	
5	336	141.27	637.0	
6	348	48.45	210.8	
7	496	42.63	130.3	
8	513	63.10	186.3	
9	547	26.69	74.0	
10	565	64.65	173.3	
11	624	18.52	45.0	
12	705	12.67	27.2	
13	1,665	5.46	5.0	
14	1,960	5.50	4.3	
15	2,159	8.14	5.7	
16	2,492	8.99	5.5	
17	3,371	14.01	6.3	
18	4,449	25.54	8.7	
19	10,380	75.00	10.9	Upper Marker
20	11,857	0.00	0.0	

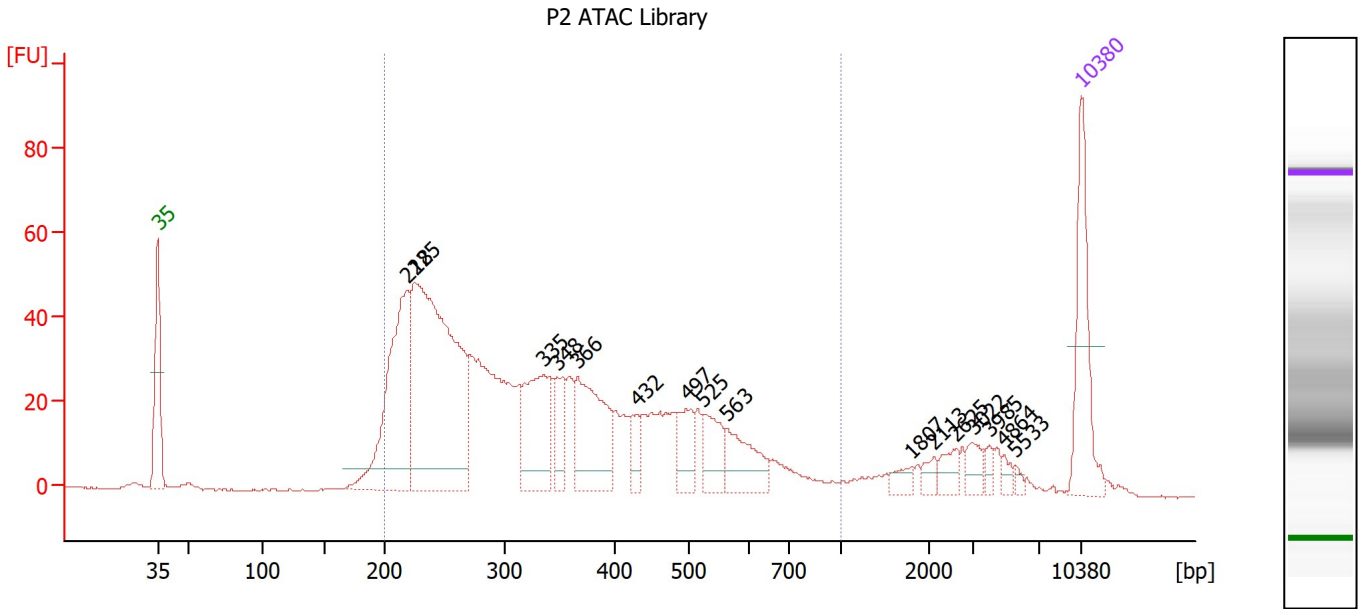
**Region table for sample 4 : P1 ATAC Library**

From [bp]	To [bp]	Corr. Area	% of Total	Average Size [bp]	Size distribution in CV [%]	Conc. [pg/μl]	Molarity [pmol/l]	Color
200	1,000	1,209.2	89	375	38.1	1,654.37	7,986.3	Blue

Assay Class: High Sensitivity DNA Assay  
 Comparison: C:\...\t\Comparison\ComparisonFile0\_High Sensitivity DNA Assay.xac

Created: 10/2/2023 1:34:13 PM  
 Modified: 10/2/2023 1:35:37 PM

**Electropherogram Summary Continued ...**



**Overall Results for sample 5 : P2 ATAC Library**

Number of peaks found: 16      Corr. Area 1: 1,037.4  
 Noise: 0.2

**Peak table for sample 5 : P2 ATAC Library**

Peak	Size [bp]	Conc. [pg/μl]	Molarity [pmol/l]	Observations
1	35	125.00	5,411.3	Lower Marker
2	218	225.56	1,571.1	
3	225	438.45	2,957.9	
4	335	110.76	500.4	
5	348	38.99	169.9	
6	366	116.58	482.2	
7	432	24.41	85.7	
8	497	35.53	108.4	
9	525	41.01	118.4	
10	563	52.23	140.5	
11	1,807	10.02	8.4	
12	2,113	9.17	6.6	
13	2,625	14.03	8.1	
14	3,022	13.25	6.6	
15	3,985	6.91	2.6	
16	4,864	6.45	2.0	
17	5,533	3.94	1.1	
18	10,380	75.00	10.9	Upper Marker

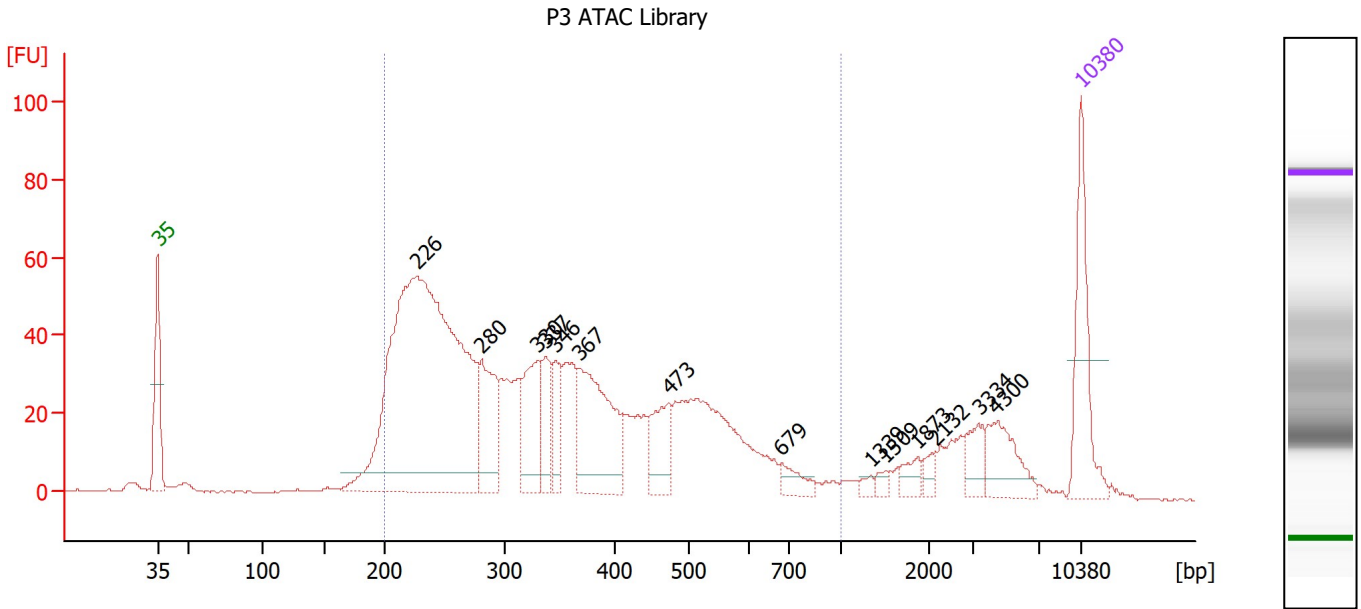
**Region table for sample 5 : P2 ATAC Library**

From [bp]	To [bp]	Corr. Area	% of Total	Average Size [bp]	Size distribution in CV [%]	Conc. [pg/μl]	Molarity [pmol/l]	Color
200	1,000	1,037.4	88	355	37.7	1,472.23	7,383.5	Blue

Assay Class: High Sensitivity DNA Assay  
 Comparison: C:\...\t\Comparison\ComparisonFile0\_High Sensitivity DNA Assay.xac

Created: 10/2/2023 1:34:13 PM  
 Modified: 10/2/2023 1:35:37 PM

**Electropherogram Summary Continued ...**



**Overall Results for sample 6 : P3 ATAC Library**

Number of peaks found: 14      Corr. Area 1: 1,223.0  
 Noise: 0.2

**Peak table for sample 6 : P3 ATAC Library**

Peak	Size [bp]	Conc. [pg/μl]	Molarity [pmol/l]	Observations
1	35	125.00	5,411.3	Lower Marker
2	226	785.53	5,266.1	
3	280	97.46	526.6	
4	330	80.21	368.7	
5	337	48.26	216.7	
6	346	40.01	175.0	
7	367	149.55	617.2	
8	473	55.63	178.3	
9	679	18.61	41.5	
10	1,339	5.20	5.9	
11	1,509	6.59	6.6	
12	1,873	12.82	10.4	
13	2,132	9.36	6.7	
14	3,334	22.74	10.3	
15	4,300	43.69	15.4	
16	10,380	75.00	10.9	Upper Marker

**Region table for sample 6 : P3 ATAC Library**

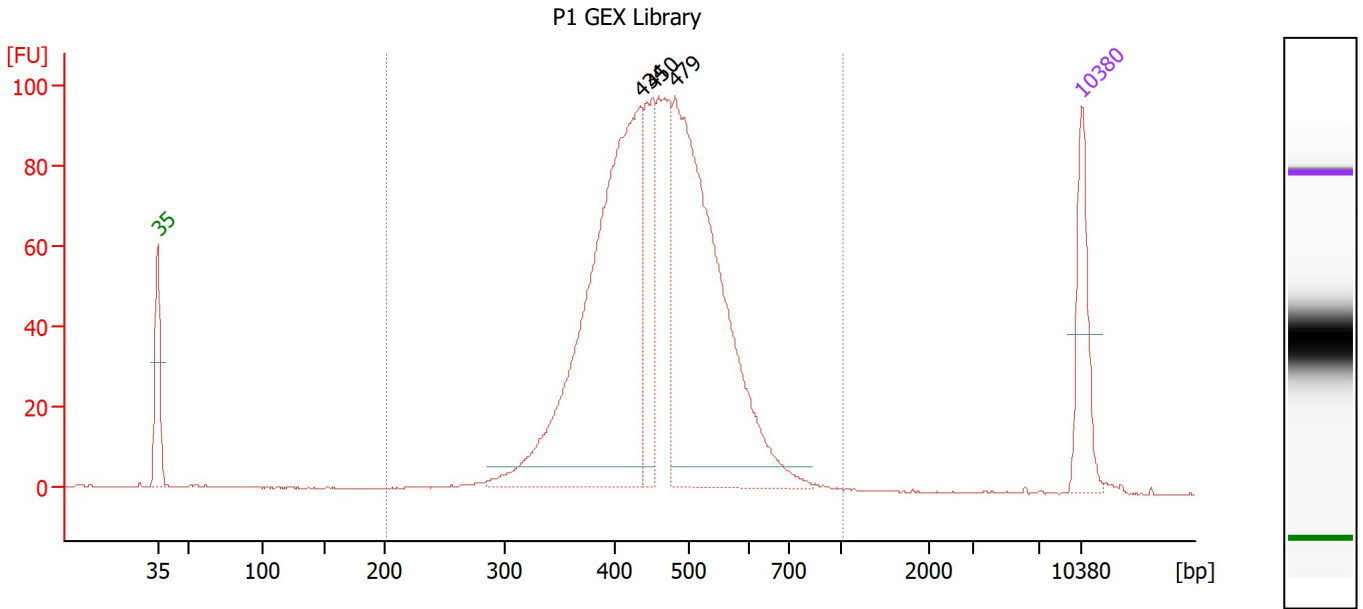
From [bp]	To [bp]	Corr. Area	% of Total	Average Size [bp]	Size distribution in CV [%]	Conc. [pg/μl]	Molarity [pmol/l]	Color
200	1,000	1,223.0	85	357	37.4	1,633.70	8,142.0	Blue



Assay Class: High Sensitivity DNA Assay  
 Comparison: C:\...\Comparison\ComparisonFile0\_High Sensitivity DNA Assay.xac

Created: 10/2/2023 1:34:13 PM  
 Modified: 10/2/2023 1:35:37 PM

**Electropherogram Summary Continued ...**



**Overall Results for sample 7 : P1 GEX Library**

Number of peaks found: 3                      Corr. Area 1: 1,312.1  
 Noise: 0.1

**Peak table for sample 7 : P1 GEX Library**

Peak	Size [bp]	Conc. [pg/μl]	Molarity [pmol/l]	Observations
1	35	125.00	5,411.3	Lower Marker
2	434	694.18	2,423.0	
3	450	146.67	493.8	
4	479	624.16	1,974.7	
5	10,380	75.00	10.9	Upper Marker

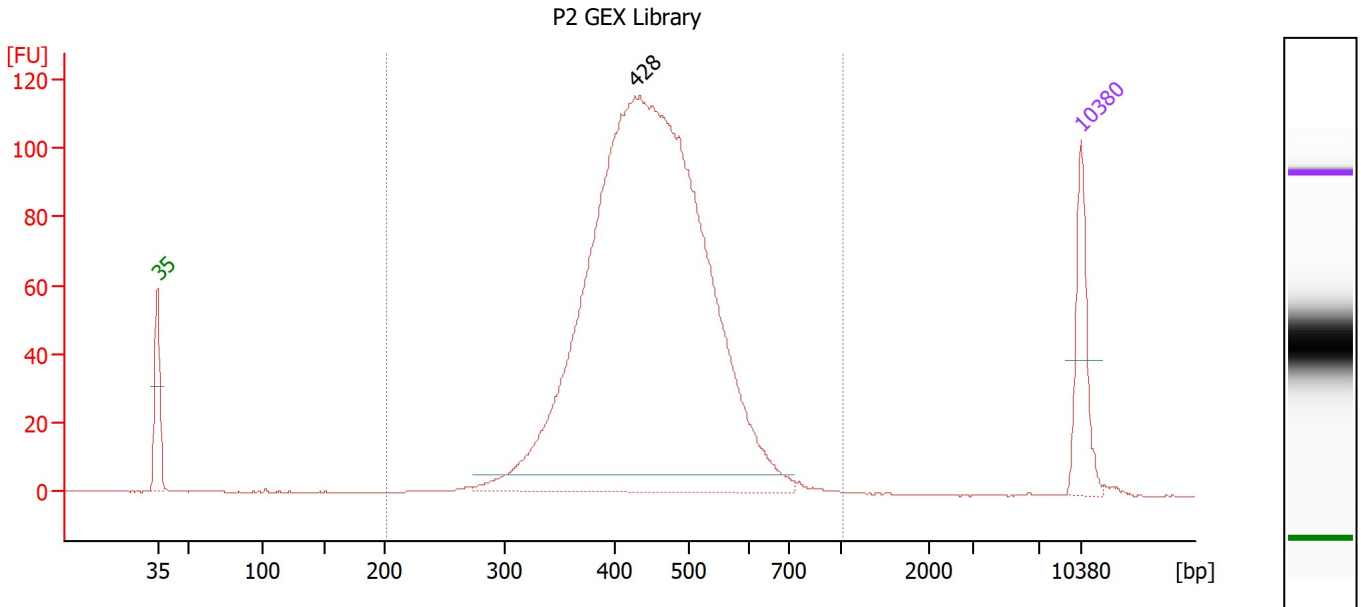
**Region table for sample 7 : P1 GEX Library**

From [bp]	To [bp]	Corr. Area	% of Total	Average Size [bp]	Size distribution in CV [%]	Conc. [pg/μl]	Molarity [pmol/l]	Color
200	1,000	1,312.1	99	459	17.3	1,702.68	5,834.5	Blue

Assay Class: High Sensitivity DNA Assay  
 Comparison C:\...\t\Comparison\ComparisonFile0\_High Sensitivity DNA Assay.xac

Created: 10/2/2023 1:34:13 PM  
 Modified: 10/2/2023 1:35:37 PM

**Electropherogram Summary Continued ...**



**Overall Results for sample 8 : P2 GEX Library**

Number of peaks found: 1      Corr. Area 1: 1,521.2  
 Noise: 0.2

**Peak table for sample 8 : P2 GEX Library**

Peak	Size [bp]	Conc. [pg/μl]	Molarity [pmol/l]	Observations
1	35	125.00	5,411.3	Lower Marker
2	428	1,850.05	6,552.3	
3	10,380	75.00	10.9	Upper Marker

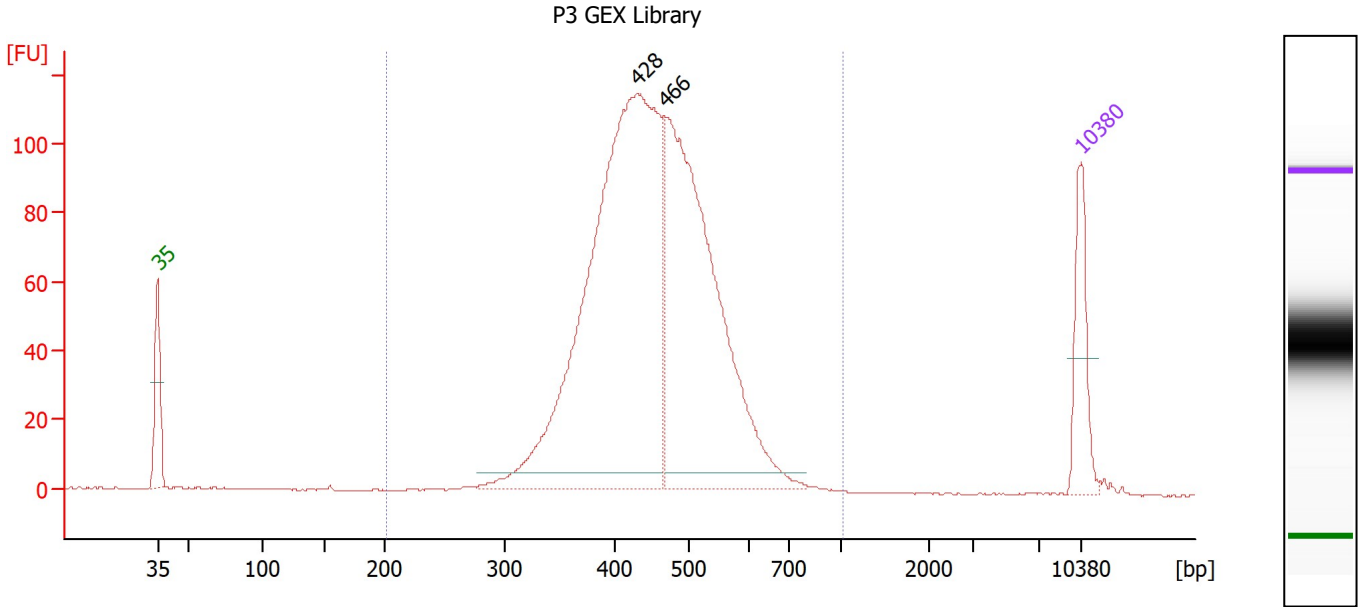
**Region table for sample 8 : P2 GEX Library**

From [bp]	To [bp]	Corr. Area	% of Total	Average Size [bp]	Size distribution in CV [%]	Conc. [pg/μl]	Molarity [pmol/l]	Color
200	1,000	1,521.2	99	451	17.3	1,886.06	6,578.5	Blue

Assay Class: High Sensitivity DNA Assay  
 Comparison C:\...\t\Comparison\ComparisonFile0\_High Sensitivity DNA Assay.xac

Created: 10/2/2023 1:34:13 PM  
 Modified: 10/2/2023 1:35:37 PM

**Electropherogram Summary Continued ...**



**Overall Results for sample 9 : P3 GEX Library**

Number of peaks found: 2                      Corr. Area 1: 1,484.7  
 Noise: 0.2

**Peak table for sample 9 : P3 GEX Library**

Peak	Size [bp]	Conc. [pg/μl]	Molarity [pmol/l]	Observations
1	35	125.00	5,411.3	Lower Marker
2	428	1,084.97	3,836.6	
3	466	716.29	2,329.2	
4	10,380	75.00	10.9	Upper Marker

**Region table for sample 9 : P3 GEX Library**

From [bp]	To [bp]	Corr. Area	% of Total	Average Size [bp]	Size distribution in CV [%]	Conc. [pg/μl]	Molarity [pmol/l]	Color
200	1,000	1,484.7	99	454	16.6	1,845.35	6,373.7	Blue

Assay Class: High Sensitivity DNA Assay  
Comparison: C:\...t\Comparison\ComparisonFile0\_High Sensitivity DNA Assay.xac

Created: 10/2/2023 1:34:13 PM  
Modified: 10/2/2023 1:35:37 PM

Gel Image

