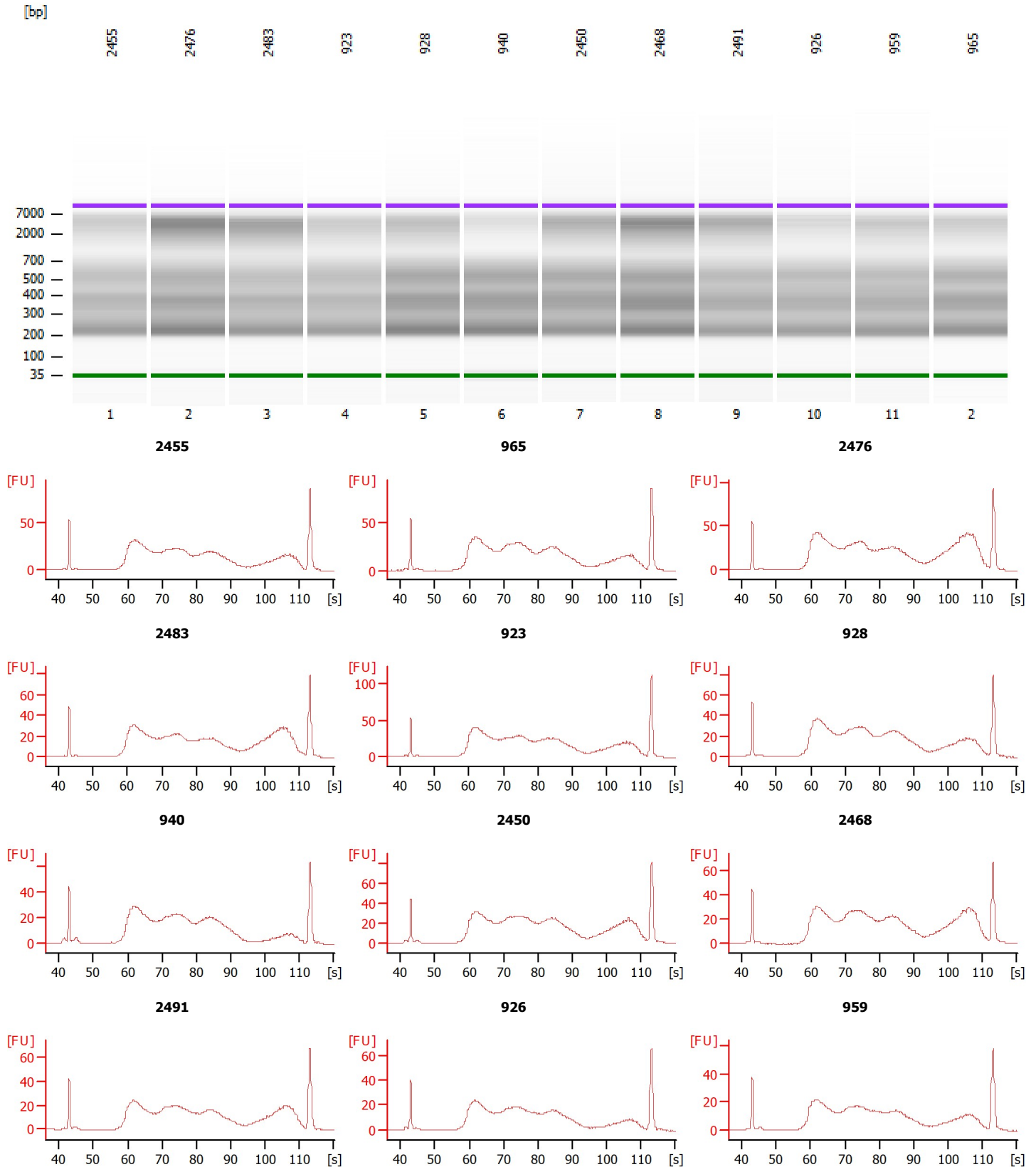


Assay Class: High Sensitivity DNA Assay  
Comparison: C:\...analyzer\2100 expert\Comparison\10XSC0404 ATAC Libraries.xac

Created: 12/26/2024 3:25:02 PM  
Modified: 12/26/2024 3:25:02 PM

Electrophoresis File Run Summary



Assay Class: High Sensitivity DNA Assay  
 Comparison C:\...nalyzer\2100 expert\Comparison\10XSC0404 ATAC Libraries.xac

Created: 12/26/2024 3:25:02 PM  
 Modified: 12/26/2024 3:25:02 PM

**Electrophoresis File Run Summary (Comparison Summary)**

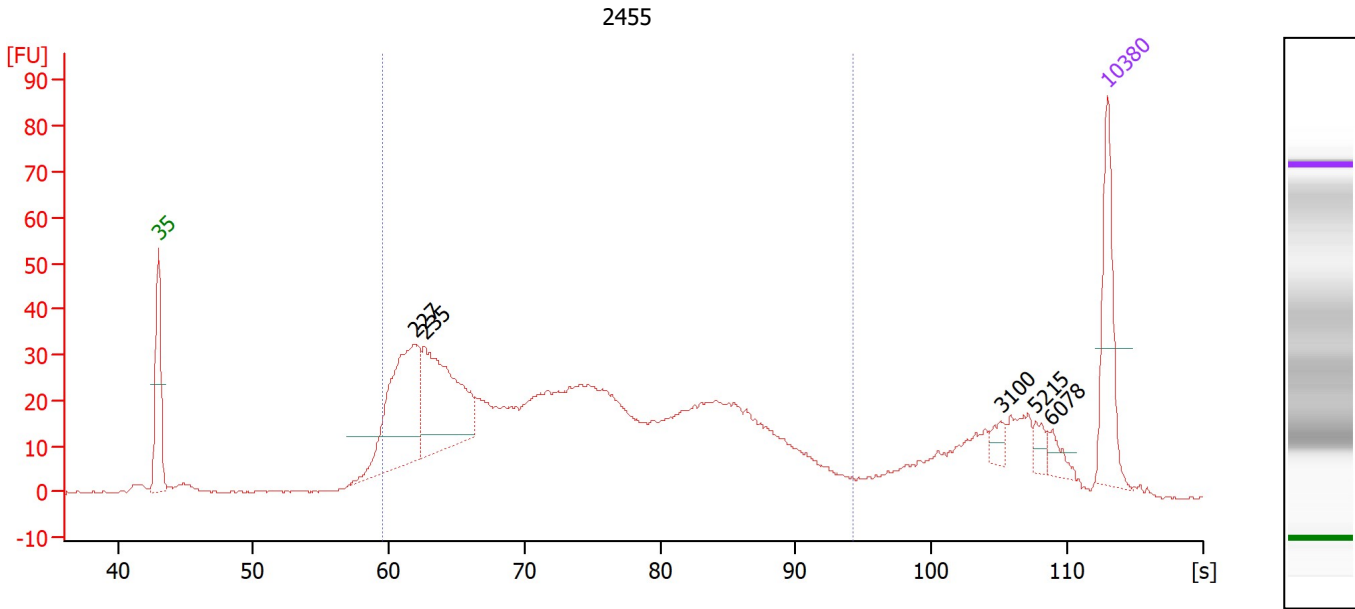
Sample Name	Sample Comment	File
2455		C:\...2100 expert\data\2024-12-26\Bioanalyzer1_High Sensitivity DNA
965		C:\...2100 expert\data\2024-12-26\Bioanalyzer1_High Sensitivity DNA
2476		C:\...2100 expert\data\2024-12-26\Bioanalyzer1_High Sensitivity DNA
2483		C:\...2100 expert\data\2024-12-26\Bioanalyzer1_High Sensitivity DNA
923		C:\...2100 expert\data\2024-12-26\Bioanalyzer1_High Sensitivity DNA
928		C:\...2100 expert\data\2024-12-26\Bioanalyzer1_High Sensitivity DNA
940		C:\...2100 expert\data\2024-12-26\Bioanalyzer1_High Sensitivity DNA
2450		C:\...2100 expert\data\2024-12-26\Bioanalyzer1_High Sensitivity DNA
2468		C:\...2100 expert\data\2024-12-26\Bioanalyzer1_High Sensitivity DNA
2491		C:\...2100 expert\data\2024-12-26\Bioanalyzer1_High Sensitivity DNA
926		C:\...2100 expert\data\2024-12-26\Bioanalyzer1_High Sensitivity DNA
959		C:\...2100 expert\data\2024-12-26\Bioanalyzer1_High Sensitivity DNA

**Comparison Comments :**

Assay Class: High Sensitivity DNA Assay  
 Comparison: C:\...analyzer\2100 expert\Comparison\10XSC0404 ATAC Libraries.xac

Created: 12/26/2024 3:25:02 PM  
 Modified: 12/26/2024 3:25:02 PM

**Electropherogram Summary**



**Overall Results for sample 1 : 2455**

Number of peaks found: 5                      Corr. Area 1: 880.8  
 Noise: 0.1

**Peak table for sample 1 : 2455**

Peak	Size [bp]	Conc. [pg/μl]	Molarity [pmol/l]	Observations
1	35	125.00	5,411.3	Lower Marker
2	227	212.15	1,417.7	
3	235	194.78	1,257.4	
4	3,100	11.24	5.5	
5	5,215	11.49	3.3	
6	6,078	12.84	3.2	
7	10,380	75.00	10.9	Upper Marker

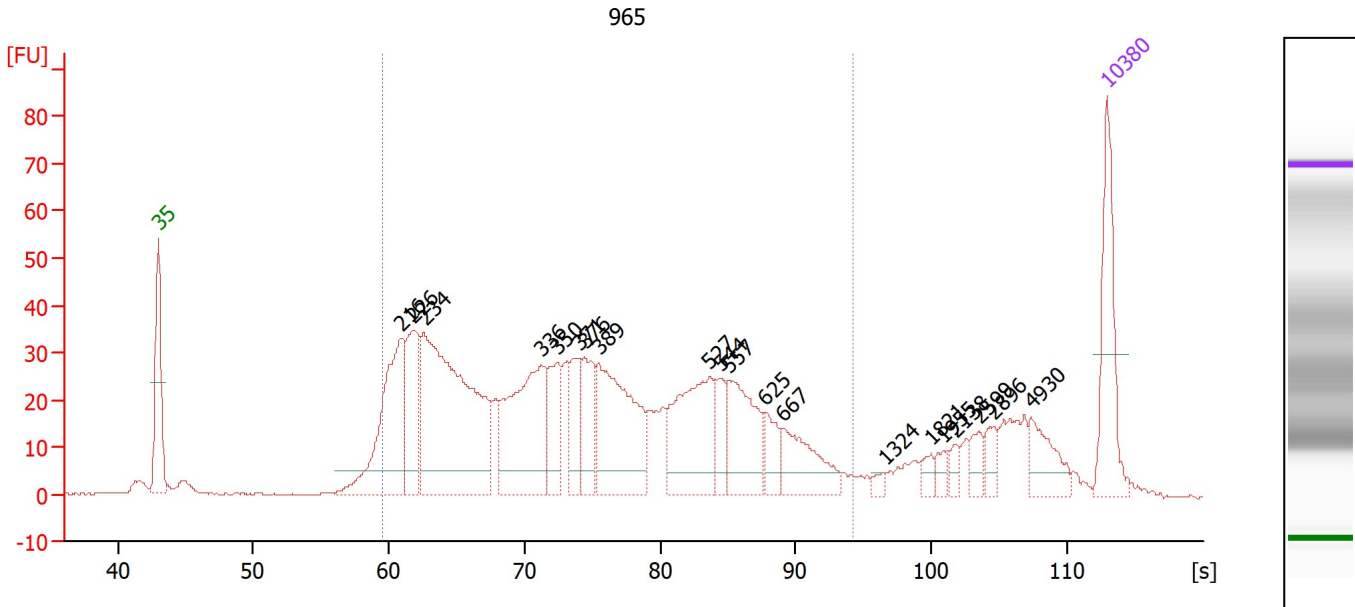
**Region table for sample 1 : 2455**

From [s]	To [s]	Corr. Area	% of Total	Average Size [bp]	Size distribution in CV [%]	Conc. [pg/μl]	Molarity [pmol/l]	Color
59.55	94.28	880.8	81	395	39.3	1,512.09	7,048.5	Blue

Assay Class: High Sensitivity DNA Assay  
 Comparison: C:\...nalyzer\2100 expert\Comparison\10XSC0404 ATAC Libraries.xac

Created: 12/26/2024 3:25:02 PM  
 Modified: 12/26/2024 3:25:02 PM

**Electropherogram Summary Continued ...**



**Overall Results for sample 12 : 965**

Number of peaks found: 20      Corr. Area 1: 999.0  
 Noise: 0.1

**Peak table for sample 12 : 965**

Peak	Size [bp]	Conc. [pg/μl]	Molarity [pmol/l]	Observations
1	35	125.00	5,411.3	Lower Marker
2	216	191.26	1,343.0	
3	226	100.26	672.9	
4	234	370.81	2,396.2	
5	336	176.12	794.2	
6	350	60.28	261.1	
7	371	44.47	181.8	
8	376	58.98	237.5	
9	389	163.56	636.4	
10	527	130.40	374.9	
11	544	30.79	85.8	
12	557	90.11	245.0	
13	625	29.00	70.3	
14	667	64.43	146.3	
15	1,324	5.37	6.1	
16	1,821	9.25	7.7	
17	1,955	9.13	7.1	
18	2,138	9.09	6.4	
19	2,599	14.12	8.2	
20	2,896	14.44	7.6	
21	4,930	35.13	10.8	
22	10,380	75.00	10.9	Upper Marker

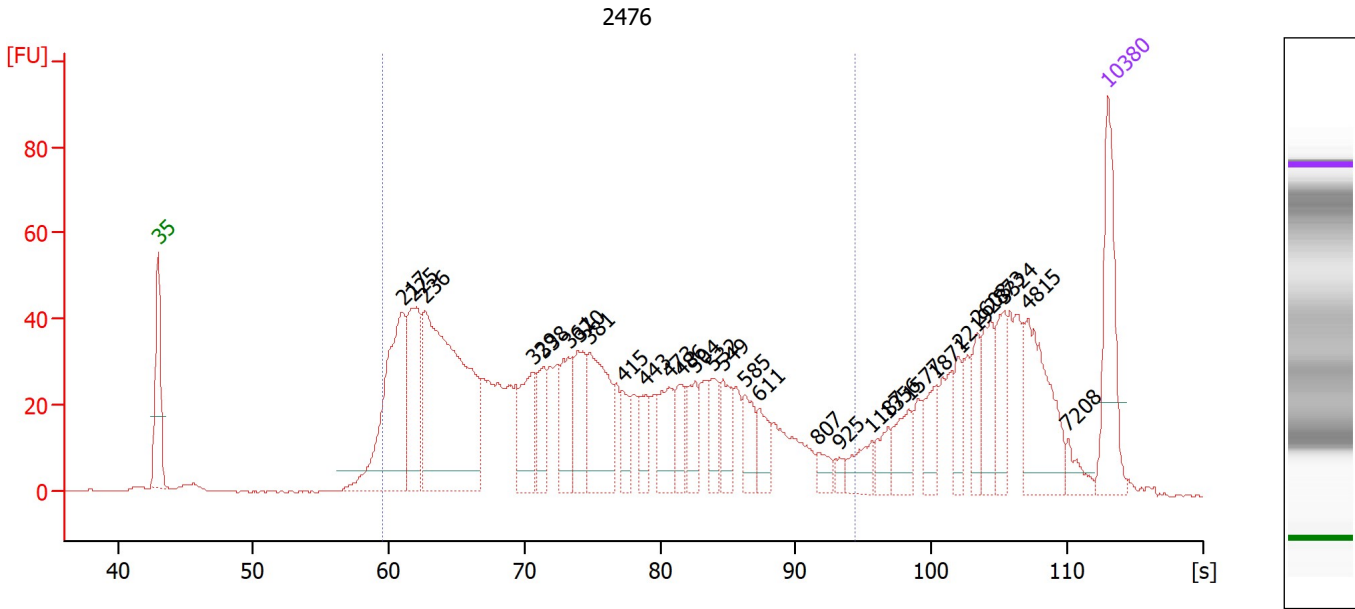
**Region table for sample 12 : 965**

From [s]	To [s]	Corr. Area	% of Total	Average Size [bp]	Size distribution in CV [%]	Conc. [pg/μl]	Molarity [pmol/l]	Color
59.55	94.28	999.0	82	401	38.7	1,607.75	7,387.0	Blue

Assay Class: High Sensitivity DNA Assay  
 Comparison: C:\...analyzer\2100 expert\Comparison\10XSC0404 ATAC Libraries.xac

Created: 12/26/2024 3:25:02 PM  
 Modified: 12/26/2024 3:25:02 PM

**Electropherogram Summary Continued ...**



**Overall Results for sample 2 : 2476**

Number of peaks found: 29                      Corr. Area 1: 1,198.0  
 Noise: 0.2

**Peak table for sample 2 : 2476**

Peak	Size [bp]	Conc. [pg/μl]	Molarity [pmol/l]	Observations
1	35	125.00	5,411.3	Lower Marker
2	217	213.75	1,493.7	
3	225	120.12	809.1	
4	236	372.45	2,391.8	
5	329	71.76	330.1	
6	338	41.48	185.8	
7	361	57.37	240.8	
8	370	59.17	242.4	
9	381	107.60	428.4	
10	415	26.66	97.4	
11	443	29.35	100.4	
12	473	48.32	154.9	
13	486	31.24	97.4	
14	504	35.35	106.3	
15	532	33.46	95.3	
16	549	33.26	91.7	
17	585	32.76	84.9	
18	611	25.98	64.4	
19	807	14.45	27.1	
20	925	6.74	11.0	
21	1,187	24.50	31.3	
22	1,356	19.69	22.0	
23	1,577	28.96	27.8	
24	1,871	26.75	21.7	
25	2,219	19.89	13.6	
26	2,603	22.88	13.3	

Assay Class: High Sensitivity DNA Assay  
 Comparison C:\...nalyzer\2100 expert\Comparison\10XSC0404 ATAC Libraries.xac


Created: 12/26/2024 3:25:02 PM  
 Modified: 12/26/2024 3:25:02 PM

**Electropherogram Summary Continued ...**

**... Peak table for sample 2 : 2476**

Peak	Size [bp]	Conc. [pg/μl]	Molarity [pmol/l]	Observations
27	2,873	40.24	21.2	
28	3,324	34.40	15.7	
29	4,815	84.85	26.7	
30	7,208	13.90	2.9	
31	10,380	75.00	10.9	Upper Marker

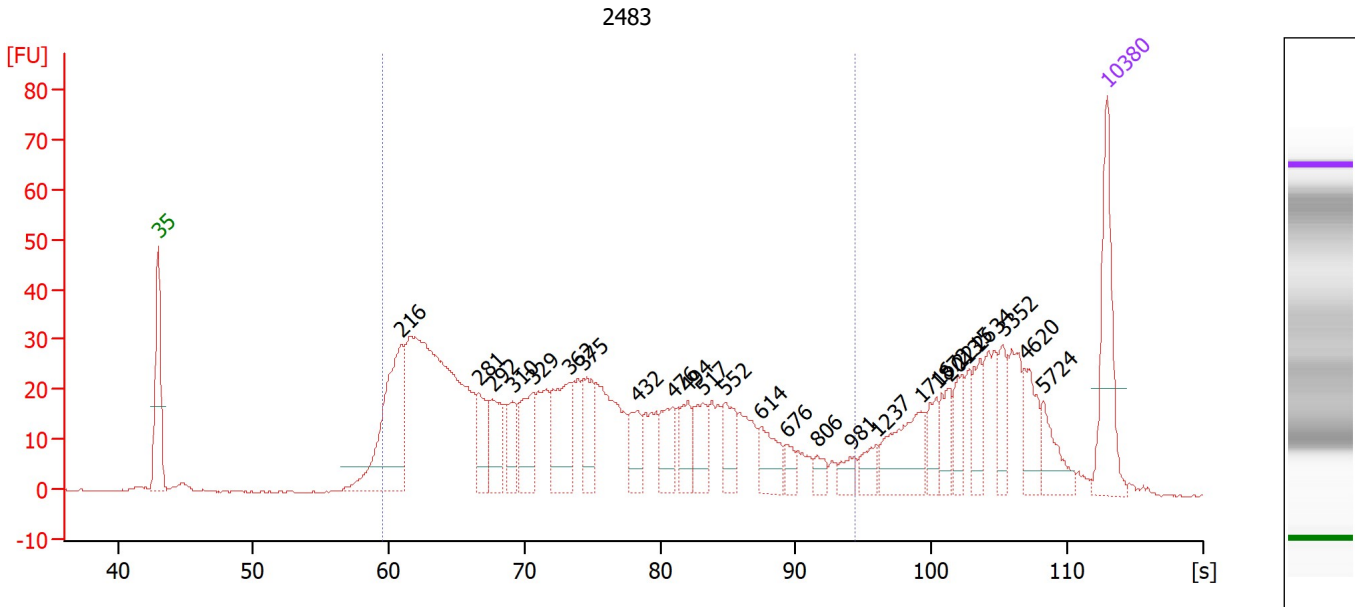
**Region table for sample 2 : 2476**

From [s]	To [s]	Corr. Area % of Total	Average Size [bp]	Size distribution in CV [%]	Conc. [pg/μl]	Molarity [pmol/l]	Color	
59.52	94.32	1,198.0	71	398	40.2	1,775.11	8,262.0	

Assay Class: High Sensitivity DNA Assay  
 Comparison: C:\...analyzer\2100 expert\Comparison\10XSC0404 ATAC Libraries.xac

Created: 12/26/2024 3:25:02 PM  
 Modified: 12/26/2024 3:25:02 PM

**Electropherogram Summary Continued ...**



**Overall Results for sample 3 : 2483**

Number of peaks found: 25                      Corr. Area 1: 834.0  
 Noise: 0.2

**Peak table for sample 3 : 2483**

Peak	Size [bp]	Conc. [pg/μl]	Molarity [pmol/l]	Observations
1	35	125.00	5,411.3	Lower Marker
2	216	177.70	1,247.2	
3	281	47.26	255.2	
4	292	54.08	280.8	
5	310	31.69	154.8	
6	329	56.69	261.1	
7	362	81.63	341.4	
8	375	50.12	202.4	
9	432	32.97	115.6	
10	476	36.64	116.6	
11	494	34.44	105.5	
12	517	37.16	108.8	
13	552	36.17	99.2	
14	614	36.56	90.3	
15	676	14.24	31.9	
16	806	12.45	23.4	
17	981	12.85	19.9	
18	1,237	17.55	21.5	
19	1,716	58.90	52.0	
20	1,872	19.77	16.0	
21	2,013	22.72	17.1	
22	2,215	22.56	15.4	
23	2,634	26.83	15.4	
24	3,352	24.37	11.0	
25	4,620	31.80	10.4	
26	5,724	28.58	7.6	

Assay Class: High Sensitivity DNA Assay  
 Comparison C:\...nalyzer\2100 expert\Comparison\10XSC0404 ATAC Libraries.xac


Created: 12/26/2024 3:25:02 PM  
 Modified: 12/26/2024 3:25:02 PM

**Electropherogram Summary Continued ...**

**... Peak table for sample 3 : 2483**

Peak	Size [bp]	Conc. [pg/μl]	Molarity [pmol/l]	Observations
27	10,380	75.00	10.9	Upper Marker

**Region table for sample 3 : 2483**

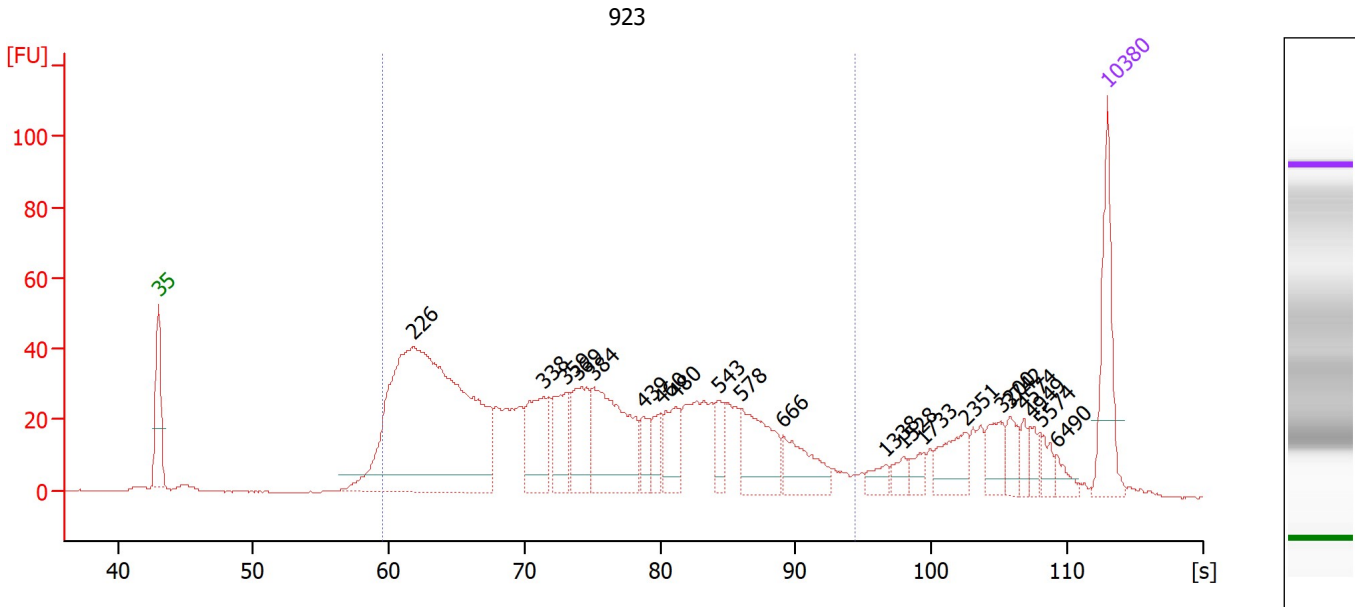
From [s]	To [s]	Corr. Area % of Total	Average Size [bp]	Size distribution in CV [%]	Conc. [pg/μl]	Molarity [pmol/l]	Color	
59.52	94.32	834.0	72	397	40.6	1,518.95	7,097.2	



Assay Class: High Sensitivity DNA Assay  
 Comparison C:\...analyzer\2100 expert\Comparison\10XSC0404 ATAC Libraries.xac

Created: 12/26/2024 3:25:02 PM  
 Modified: 12/26/2024 3:25:02 PM

**Electropherogram Summary Continued ...**



**Overall Results for sample 4 : 923**

Number of peaks found: 21                      Corr. Area 1: 1,131.4  
 Noise: 0.2

**Peak table for sample 4 : 923**

Peak	Size [bp]	Conc. [pg/μl]	Molarity [pmol/l]	Observations
1	35	125.00	5,411.3	Lower Marker
2	226	717.75	4,808.7	
3	338	86.09	385.5	
4	359	62.54	264.2	
5	369	76.31	313.2	
6	384	159.29	628.3	
7	439	26.04	89.8	
8	460	28.09	92.4	
9	480	49.86	157.5	
10	543	28.43	79.3	
11	578	86.20	226.1	
12	666	57.89	131.7	
13	1,338	13.87	15.7	
14	1,528	13.21	13.1	
15	1,733	12.88	11.3	
16	2,351	37.68	24.3	
17	3,200	27.58	13.1	
18	3,742	19.39	7.9	
19	4,574	12.73	4.2	
20	4,949	12.69	3.9	
21	5,574	14.15	3.8	
22	6,490	12.05	2.8	
23	10,380	75.00	10.9	Upper Marker

Assay Class: High Sensitivity DNA Assay  
Comparison C:\...nalyzer\2100 expert\Comparison\10XSC0404 ATAC Libraries.xac

Created: 12/26/2024 3:25:02 PM  
Modified: 12/26/2024 3:25:02 PM

**Electropherogram Summary Continued ...**

... Region table for sample 4 :

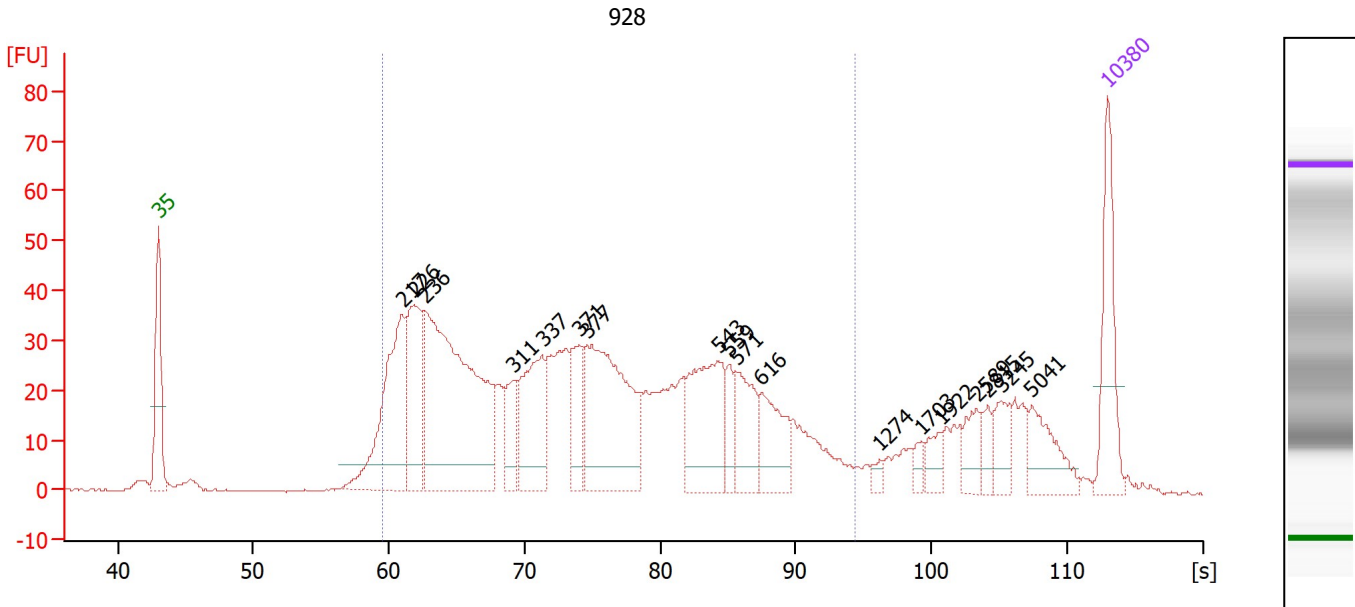
923

From [s]	To [s]	Corr. Area	% of Total	Average Size [bp]	Size distribution in CV [%]	Conc. [pg/μl]	Molarity [pmol/l]	Color
59.52	94.32	1,131.4	81	400	39.6	1,638.93	7,585.1	■

Assay Class: High Sensitivity DNA Assay  
 Comparison: C:\...nalyzer\2100 expert\Comparison\10XSC0404 ATAC Libraries.xac

Created: 12/26/2024 3:25:02 PM  
 Modified: 12/26/2024 3:25:02 PM

**Electropherogram Summary Continued ...**



**Overall Results for sample 5 : 928**

Number of peaks found: 18                      Corr. Area 1: 1,070.8  
 Noise: 0.2

**Peak table for sample 5 : 928**

Peak	Size [bp]	Conc. [pg/μl]	Molarity [pmol/l]	Observations
1	35	125.00	5,411.3	Lower Marker
2	217	207.80	1,453.9	
3	226	133.98	896.7	
4	236	430.71	2,769.5	
5	311	47.25	230.2	
6	337	121.69	546.8	
7	371	58.57	239.4	
8	377	230.33	924.5	
9	543	132.41	369.5	
10	559	30.57	82.8	
11	571	66.12	175.4	
12	616	66.35	163.2	
13	1,274	7.07	8.4	
14	1,703	9.90	8.8	
15	1,922	17.43	13.7	
16	2,589	25.13	14.7	
17	2,815	14.38	7.7	
18	3,245	26.31	12.3	
19	5,041	45.77	13.8	
20	10,380	75.00	10.9	Upper Marker

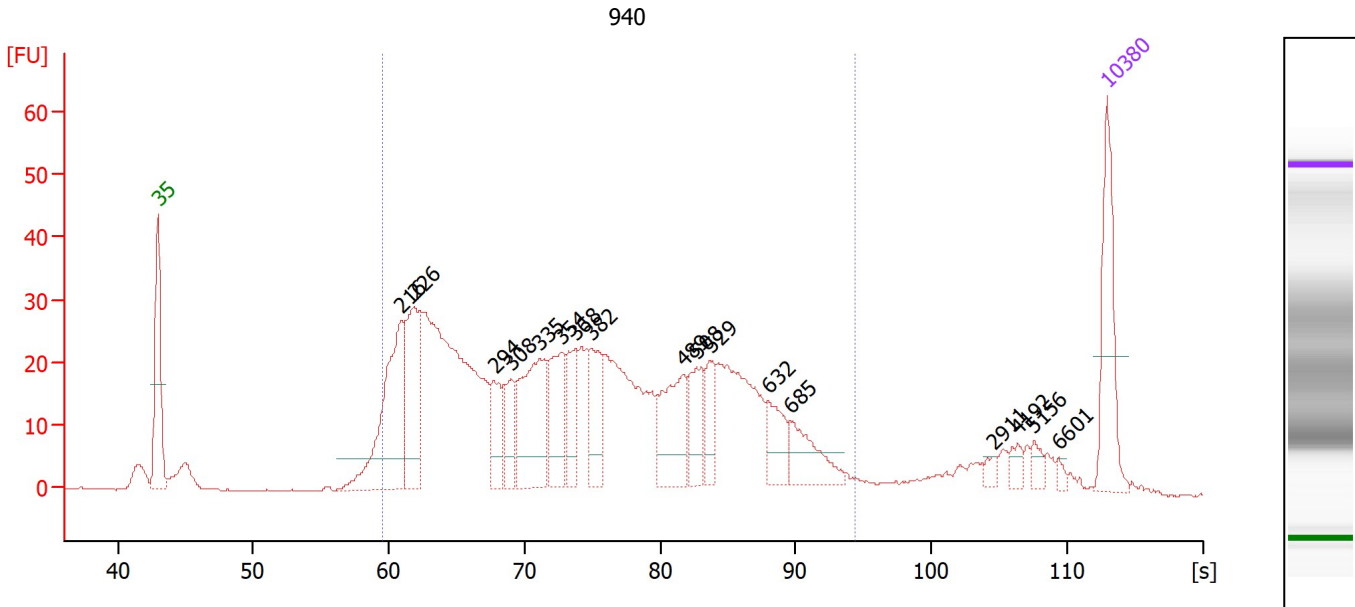
**Region table for sample 5 : 928**

From [s]	To [s]	Corr. Area	% of Total	Average Size [bp]	Size distribution in CV [%]	Conc. [pg/μl]	Molarity [pmol/l]	Color
59.52	94.32	1,070.8	80	405	39.4	1,881.62	8,612.8	■

Assay Class: High Sensitivity DNA Assay  
 Comparison C:\...nalyzer\2100 expert\Comparison\10XSC0404 ATAC Libraries.xac

Created: 12/26/2024 3:25:02 PM  
 Modified: 12/26/2024 3:25:02 PM

**Electropherogram Summary Continued ...**



**Overall Results for sample 6 : 940**

Number of peaks found: 17                      Corr. Area 1: 821.5  
 Noise: 0.2

**Peak table for sample 6 : 940**

Peak	Size [bp]	Conc. [pg/μl]	Molarity [pmol/l]	Observations
1	35	125.00	5,411.3	Lower Marker
2	216	187.96	1,320.1	
3	226	121.55	813.3	
4	294	51.94	267.8	
5	308	41.96	206.2	
6	335	126.85	574.5	
7	354	66.91	286.0	
8	368	47.07	194.1	
9	382	61.74	244.9	
10	489	86.60	268.1	
11	508	50.96	152.0	
12	529	34.68	99.2	
13	632	41.24	98.9	
14	685	49.24	108.9	
15	2,911	6.47	3.4	
16	4,192	9.58	3.5	
17	5,156	9.26	2.7	
18	6,601	4.57	1.0	
19	10,380	75.00	10.9	Upper Marker

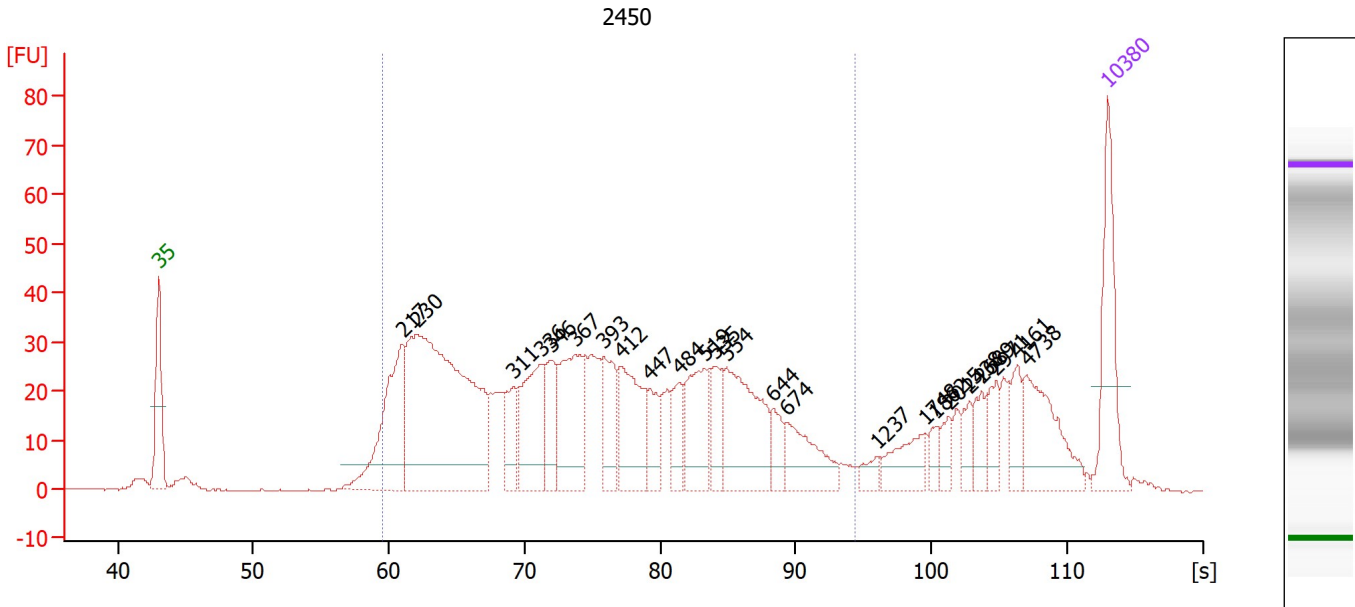
**Region table for sample 6 : 940**

From [s]	To [s]	Corr. Area	% of Total	Average Size [bp]	Size distribution in CV [%]	Conc. [pg/μl]	Molarity [pmol/l]	Color
59.52	94.32	821.5	88	401	38.3	1,829.41	8,385.6	Blue

Assay Class: High Sensitivity DNA Assay  
 Comparison: C:\...nalyzer\2100 expert\Comparison\10XSC0404 ATAC Libraries.xac

Created: 12/26/2024 3:25:02 PM  
 Modified: 12/26/2024 3:25:02 PM

**Electropherogram Summary Continued ...**



**Overall Results for sample 7 : 2450**

Number of peaks found: 24                      Corr. Area 1: 986.3  
 Noise: 0.2

**Peak table for sample 7 : 2450**

Peak	Size [bp]	Conc. [pg/μl]	Molarity [pmol/l]	Observations
1	35	125.00	5,411.3	Lower Marker
2	217	162.89	1,138.6	
3	230	478.30	3,157.1	
4	311	45.03	219.4	
5	336	104.53	471.3	
6	346	49.71	217.8	
7	367	117.08	482.7	
8	393	59.97	231.0	
9	412	94.77	348.9	
10	447	37.06	125.6	
11	484	36.30	113.7	
12	519	74.91	218.6	
13	535	39.73	112.5	
14	554	125.77	343.7	
15	644	23.88	56.2	
16	674	61.53	138.3	
17	1,237	11.70	14.3	
18	1,748	36.33	31.5	
19	1,862	12.39	10.1	
20	2,015	14.27	10.7	
21	2,438	15.08	9.4	
22	2,689	21.28	12.0	
23	2,971	23.40	11.9	
24	4,161	24.78	9.0	
25	4,738	74.38	23.8	
26	10,380	75.00	10.9	Upper Marker


Assay Class: High Sensitivity DNA Assay  
 Comparison C:\...nalyzer\2100 expert\Comparison\10XSC0404 ATAC Libraries.xac

Created: 12/26/2024 3:25:02 PM  
 Modified: 12/26/2024 3:25:02 PM

**Electropherogram Summary Continued ...**

... Region table for sample 7 :

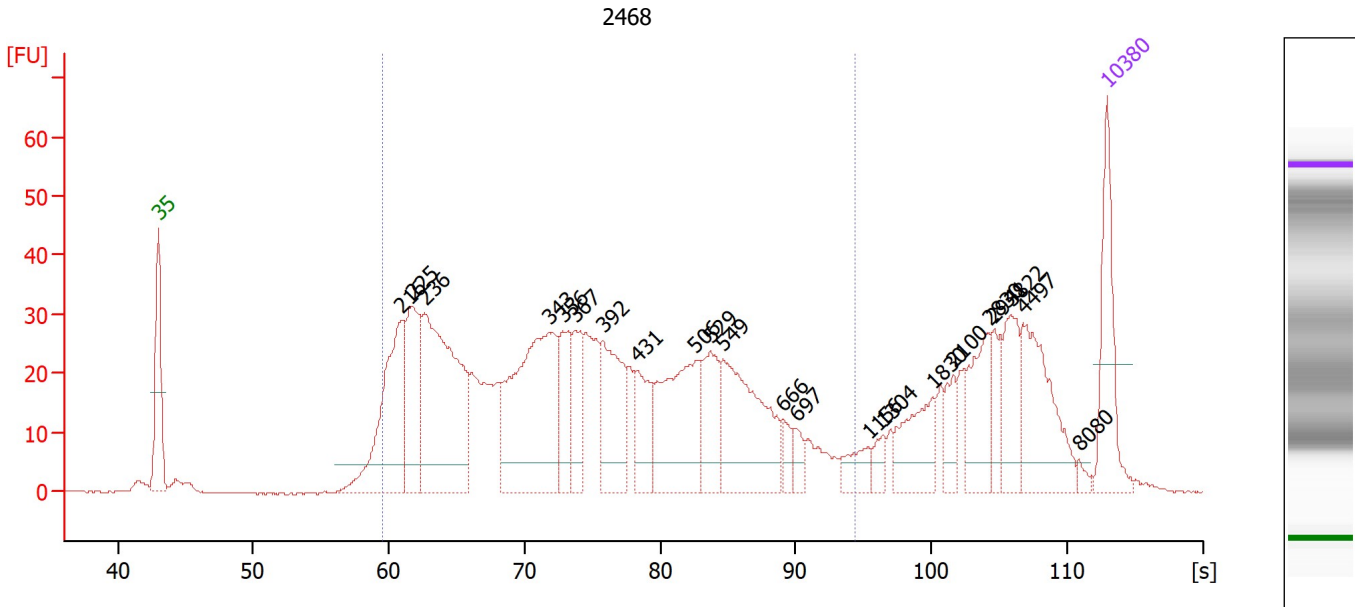
2450

From [s]	To [s]	Corr. Area	% of Total	Average Size [bp]	Size distribution in CV [%]	Conc. [pg/μl]	Molarity [pmol/l]	Color
59.52	94.32	986.3	77	409	38.4	1,691.84	7,613.8	

Assay Class: High Sensitivity DNA Assay  
 Comparison C:\...alyzer\2100 expert\Comparison\10XSC0404 ATAC Libraries.xac

Created: 12/26/2024 3:25:02 PM  
 Modified: 12/26/2024 3:25:02 PM

**Electropherogram Summary Continued ...**



**Overall Results for sample 8 : 2468**

Number of peaks found: 22      Corr. Area 1: 920.8  
 Noise: 0.2

**Peak table for sample 8 : 2468**

Peak	Size [bp]	Conc. [pg/μl]	Molarity [pmol/l]	Observations
1	35	125.00	5,411.3	Lower Marker
2	216	204.45	1,437.2	
3	225	127.75	859.3	
4	236	314.24	2,020.8	
5	343	276.95	1,221.7	
6	356	70.64	300.5	
7	367	57.15	236.1	
8	392	109.69	423.7	
9	431	58.27	204.7	
10	506	158.00	473.3	
11	529	73.58	210.7	
12	549	163.15	450.3	
13	666	17.03	38.7	
14	697	16.94	36.8	
15	1,156	24.71	32.4	
16	1,304	13.40	15.6	
17	1,830	57.38	47.5	
18	2,100	24.77	17.9	
19	2,830	61.47	32.9	
20	2,941	26.58	13.7	
21	3,822	54.23	21.5	
22	4,497	98.98	33.3	
23	8,080	4.91	0.9	
24	10,380	75.00	10.9	Upper Marker

Assay Class: High Sensitivity DNA Assay  
Comparison C:\...nalyzer\2100 expert\Comparison\10XSC0404 ATAC Libraries.xac

Created: 12/26/2024 3:25:02 PM  
Modified: 12/26/2024 3:25:02 PM

**Electropherogram Summary Continued ...****... Region table for sample 8 :****2468**

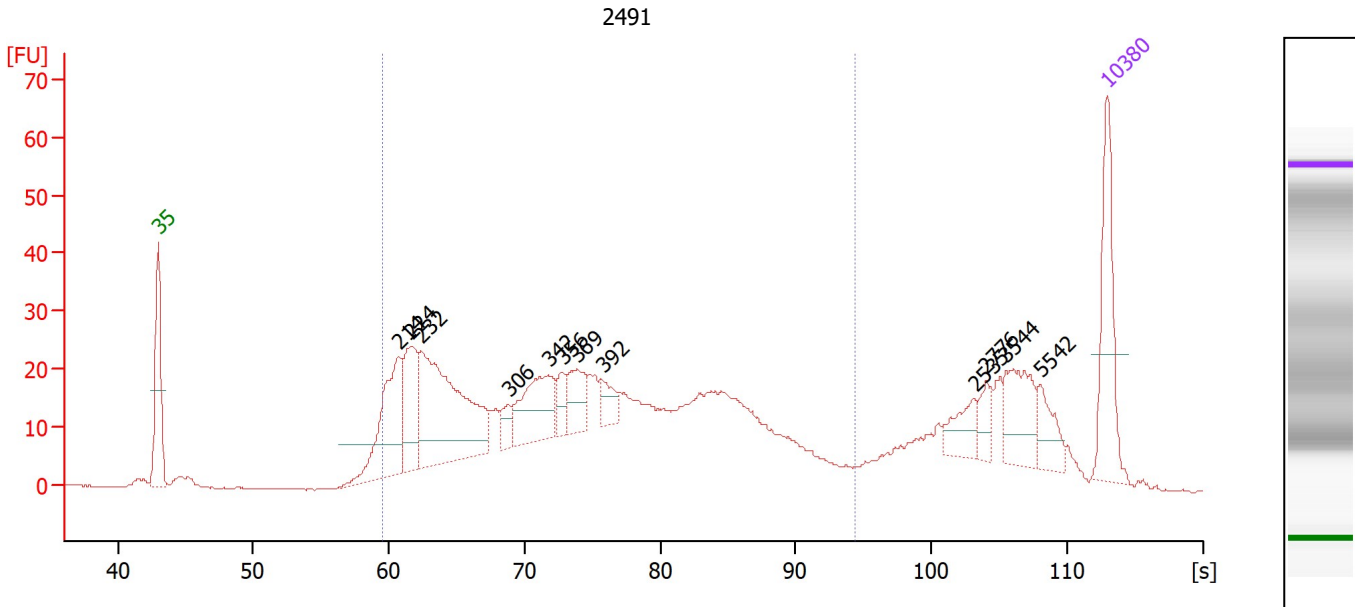
<b>From [s]</b>	<b>To [s]</b>	<b>Corr. Area</b>	<b>% of Total</b>	<b>Average Size [bp]</b>	<b>Size distribution in CV [%]</b>	<b>Conc. [pg/μl]</b>	<b>Molarity [pmol/l]</b>	<b>Color</b>
59.52	94.32	920.8	73	404	38.7	1,938.44	8,818.5	■



Assay Class: High Sensitivity DNA Assay  
 Comparison: C:\...analyzer\2100 expert\Comparison\10XSC0404 ATAC Libraries.xac

Created: 12/26/2024 3:25:02 PM  
 Modified: 12/26/2024 3:25:02 PM

**Electropherogram Summary Continued ...**



**Overall Results for sample 9 : 2491**

Number of peaks found: 12      Corr. Area 1: 688.1  
 Noise: 0.1

**Peak table for sample 9 : 2491**

Peak	Size [bp]	Conc. [pg/μl]	Molarity [pmol/l]	Observations
1	35	125.00	5,411.3	Lower Marker
2	214	132.68	938.9	
3	224	86.72	586.8	
4	232	239.12	1,558.9	
5	306	18.80	93.1	
6	342	84.45	373.7	
7	356	20.98	89.3	
8	369	38.50	158.2	
9	392	21.01	81.2	
10	2,535	26.16	15.6	
11	2,776	16.86	9.2	
12	3,544	52.26	22.3	
13	5,542	27.49	7.5	
14	10,380	75.00	10.9	Upper Marker

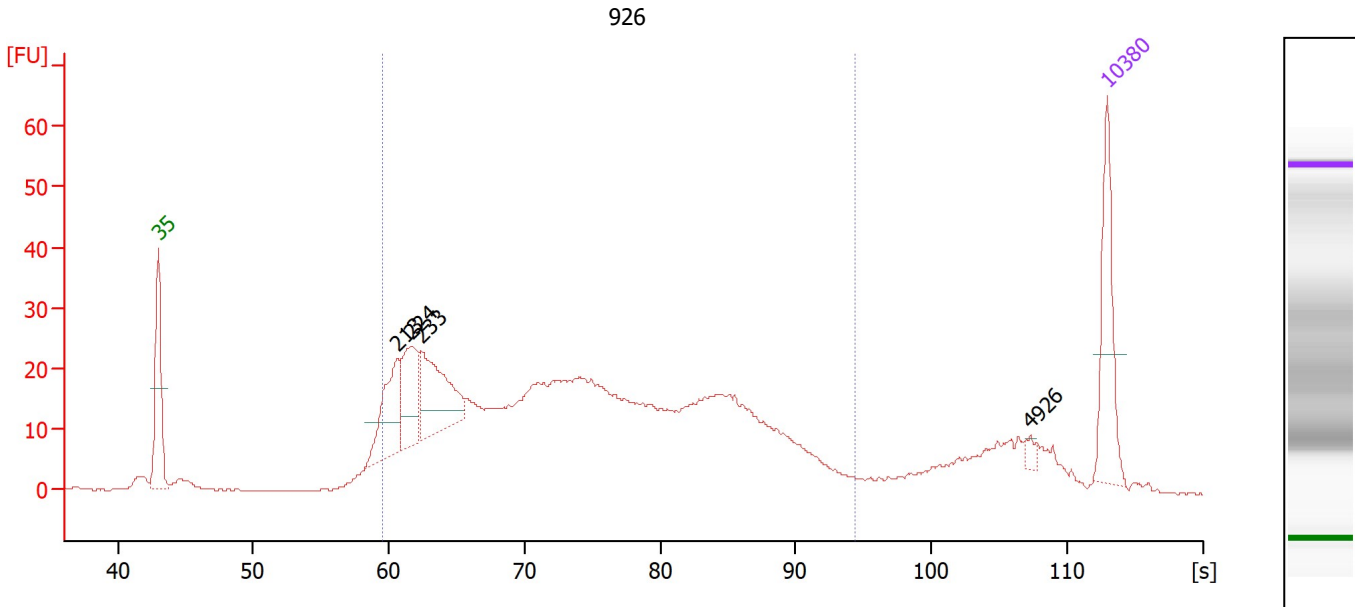
**Region table for sample 9 : 2491**

From [s]	To [s]	Corr. Area	% of Total	Average Size [bp]	Size distribution in CV [%]	Conc. [pg/μl]	Molarity [pmol/l]	Color
59.52	94.32	688.1	74	402	39.1	1,443.26	6,612.7	Blue

Assay Class: High Sensitivity DNA Assay  
 Comparison C:\...analyzer\2100 expert\Comparison\10XSC0404 ATAC Libraries.xac

Created: 12/26/2024 3:25:02 PM  
 Modified: 12/26/2024 3:25:02 PM

**Electropherogram Summary Continued ...**



**Overall Results for sample 10 : 926**

Number of peaks found: 4      Corr. Area 1: 662.6  
 Noise: 0.1

**Peak table for sample 10 : 926**

Peak	Size [bp]	Conc. [pg/μl]	Molarity [pmol/l]	Observations
1	35	125.00	5,411.3	Lower Marker
2	213	96.00	684.0	
3	224	81.14	549.3	
4	233	119.49	777.0	
5	4,926	5.82	1.8	
6	10,380	75.00	10.9	Upper Marker

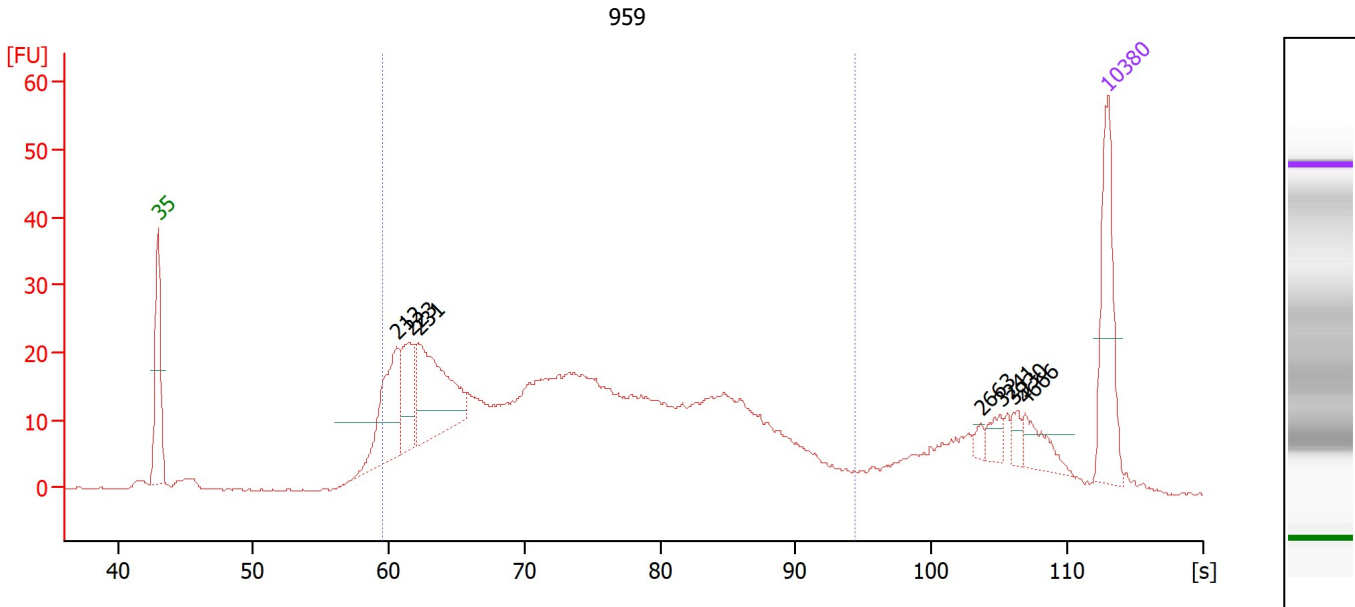
**Region table for sample 10 : 926**

From [s]	To [s]	Corr. Area	% of Total	Average Size [bp]	Size distribution in CV [%]	Conc. [pg/μl]	Molarity [pmol/l]	Color
59.52	94.32	662.6	83	400	38.7	1,545.95	7,109.3	Blue

Assay Class: High Sensitivity DNA Assay  
 Comparison: C:\...analyzer\2100 expert\Comparison\10XSC0404 ATAC Libraries.xac

Created: 12/26/2024 3:25:02 PM  
 Modified: 12/26/2024 3:25:02 PM

**Electropherogram Summary Continued ...**



**Overall Results for sample 11 : 959**

Number of peaks found: 7                      Corr. Area 1: 606.1  
 Noise: 0.1

**Peak table for sample 11 : 959**

Peak	Size [bp]	Conc. [pg/μl]	Molarity [pmol/l]	Observations
1	35	125.00	5,411.3	Lower Marker
2	212	106.02	757.7	
3	223	57.06	387.3	
4	231	135.56	891.0	
5	2,663	5.64	3.2	
6	3,241	11.12	5.2	
7	3,930	8.84	3.4	
8	4,666	22.98	7.5	
9	10,380	75.00	10.9	Upper Marker

**Region table for sample 11 : 959**

From [s]	To [s]	Corr. Area	% of Total	Average Size [bp]	Size distribution in CV [%]	Conc. [pg/μl]	Molarity [pmol/l]	Color
59.52	94.32	606.1	80	398	39.1	1,381.64	6,383.3	Blue

Assay Class: High Sensitivity DNA Assay  
Comparison: C:\...nalyzer\2100 expert\Comparison\10XSC0404 ATAC Libraries.xac

Created: 12/26/2024 3:25:02 PM  
Modified: 12/26/2024 3:25:02 PM

**Gel Image**

