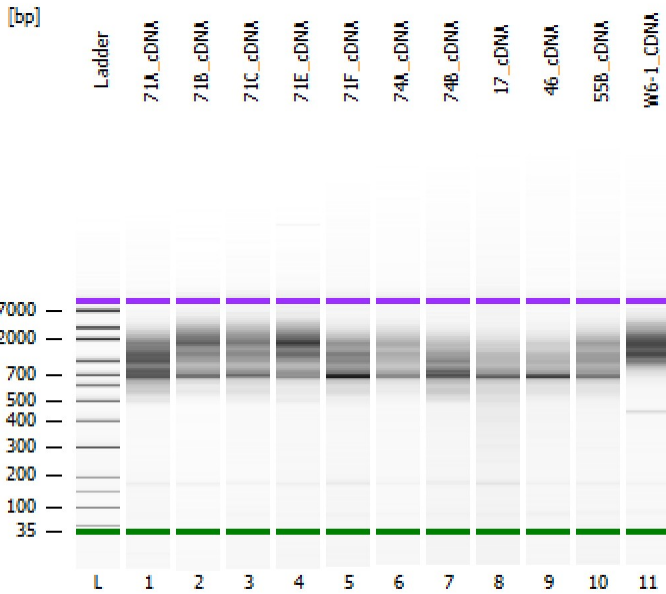


Assay Class: High Sensitivity DNA Assay
Data Path: C:\...r1_High Sensitivity DNA Assay_DE34903152_2025-01-08_001.xad

Created: 1/8/2025 1:15:12 PM
Modified: 1/8/2025 1:56:23 PM

Electrophoresis File Run Summary



Instrument Information:

Instrument Name: DE34903152 Firmware: C.01.069
Serial#: DE34903152 Type: G2938C

Assay Information:

Assay Origin Path: C:\Program Files (x86)\Agilent\2100 bioanalyzer\2100 expert\assays\dsDNA\High Sensitivity DNA.xsy
Assay Class: High Sensitivity DNA Assay
Version: 1.03
Assay Comments: Copyright © 2003-2010 Agilent Technologies

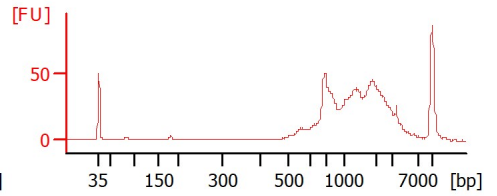
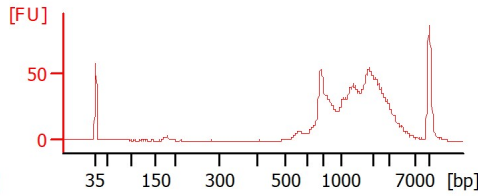
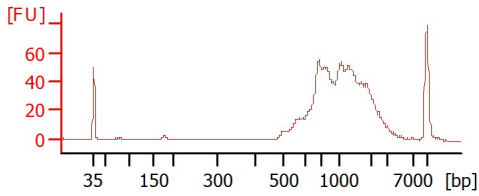
Chip Information:

Chip Lot #:
Reagent Kit Lot #:
Chip Comments:

71A_cDNA

71B_cDNA

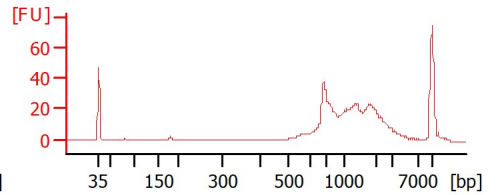
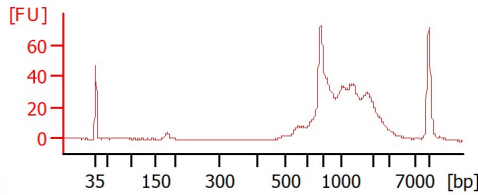
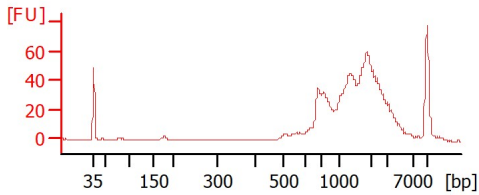
71C_cDNA



71E_cDNA

71F_cDNA

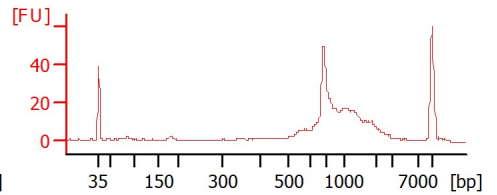
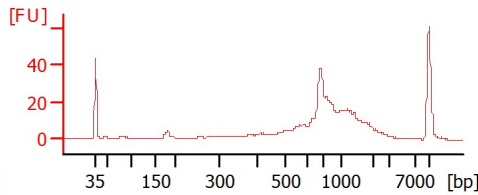
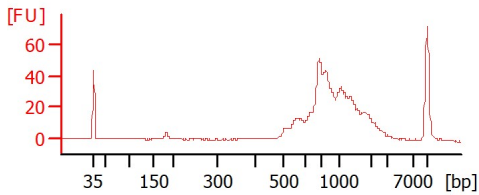
74A_cDNA



74B_cDNA

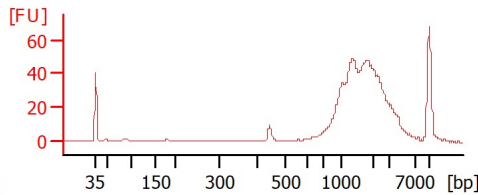
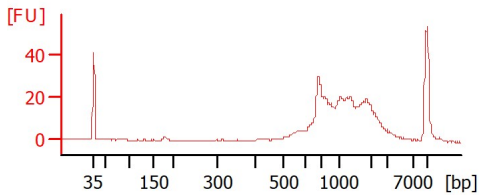
17_cDNA

46_cDNA



55B_cDNA

W6-1_cDNA



Assay Class: High Sensitivity DNA Assay
 Data Path: C:\...r1_High Sensitivity DNA Assay_DE34903152_2025-01-08_001.xad

Created: 1/8/2025 1:15:12 PM
 Modified: 1/8/2025 1:56:23 PM

Electrophoresis File Run Summary (Chip Summary)

Sample Name	Sample Comment	Rest. Digest	Status	Observation	Result Label	Result Color
71A_cDNA		<input type="checkbox"/>	✓			
71B_cDNA		<input type="checkbox"/>	✓			
71C_cDNA		<input type="checkbox"/>	✓			
71E_cDNA		<input type="checkbox"/>	✓			
71F_cDNA		<input type="checkbox"/>	✓			
74A_cDNA		<input type="checkbox"/>	✓			
74B_cDNA		<input type="checkbox"/>	✓			
17_cDNA		<input type="checkbox"/>	✓			
46_cDNA		<input type="checkbox"/>	✓			
55B_cDNA		<input type="checkbox"/>	✓			
W6-1_CDNA		<input type="checkbox"/>	✓			
Ladder		<input type="checkbox"/>	✓			

Chip Lot #

Reagent Kit Lot #

Chip Comments :

Assay Class: High Sensitivity DNA Assay
 Data Path: C:\...r1_High Sensitivity DNA Assay_DE34903152_2025-01-08_001.xad

Created: 1/8/2025 1:15:12 PM
 Modified: 1/8/2025 1:56:23 PM

Electrophoresis Assay Details

General Analysis Settings

Number of Available Sample and Ladder Wells (Max.) : 12
 Minimum Visible Range [s] : 32
 Maximum Visible Range [s] : 138
 Start Analysis Time Range [s] : 33
 End Analysis Time Range [s] : 137.5
 Ladder Concentration [pg/μl] : 1950
 Uses Standard Area for Ladder Fragments
 Lower Marker Concentration [pg/μl] : 125
 Upper Marker Concentration [pg/μl] : 75
 Used Upper Marker for Quantitation
 Standard Curve Fit is Point to Point
 Show Data Aligned to Lower and Upper Marker

Integrator Settings

Integration Start Time [s] : 33.05
 Integration End Time [s] : 137
 Slope Threshold : 0.8
 Height Threshold [FU] : 5
 Area Threshold : 0.1
 Width Threshold [s] : 0.6
 Baseline Plateau [s] : 0.5

Filter Settings

Filter Width [s] : 0.5
 Polynomial Order : 4

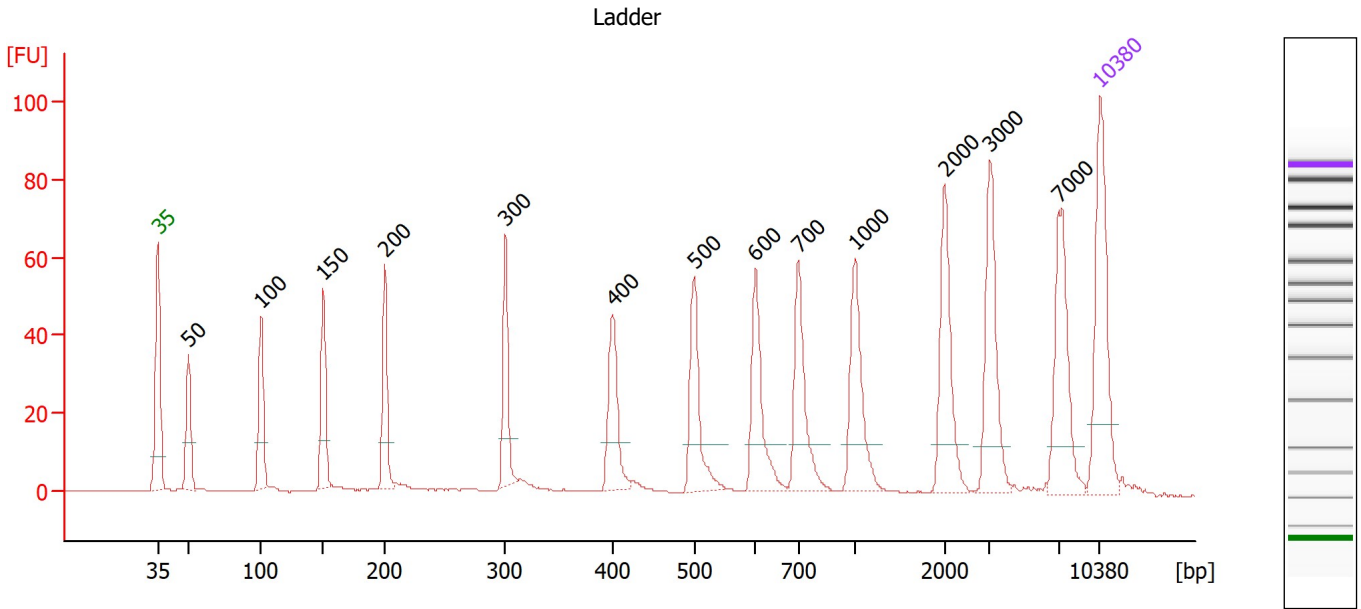
Ladder

Ladder Peak	Size	Area
1	35	160
2	50	210
3	100	208
4	150	221
5	200	242
6	300	270
7	400	305
8	500	306
9	600	336
10	700	321
11	1000	366
12	2000	413
13	3000	411
14	7000	400
15	10380	214

Assay Class: High Sensitivity DNA Assay
 Data Path: C:\...r1_High Sensitivity DNA Assay_DE34903152_2025-01-08_001.xad

Created: 1/8/2025 1:15:12 PM
 Modified: 1/8/2025 1:56:23 PM

Electropherogram Summary



Overall Results for Ladder

Noise: 0.2

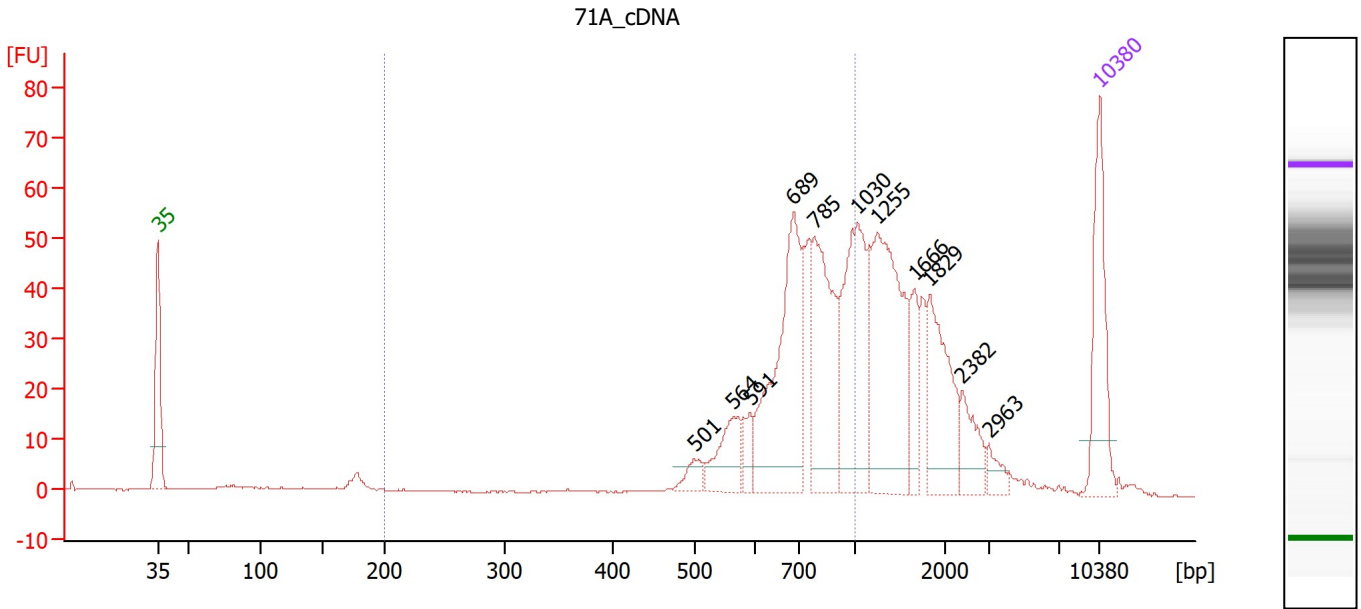
Peak table for Ladder

Peak	Size [bp]	Conc. [pg/μl]	Molarity [pmol/l]	Observations
1	35	125.00	5,411.3	Lower Marker
2	50	150.00	4,545.5	Ladder Peak
3	100	150.00	2,272.7	Ladder Peak
4	150	150.00	1,515.2	Ladder Peak
5	200	150.00	1,136.4	Ladder Peak
6	300	150.00	757.6	Ladder Peak
7	400	150.00	568.2	Ladder Peak
8	500	150.00	454.5	Ladder Peak
9	600	150.00	378.8	Ladder Peak
10	700	150.00	324.7	Ladder Peak
11	1,000	150.00	227.3	Ladder Peak
12	2,000	150.00	113.6	Ladder Peak
13	3,000	150.00	75.8	Ladder Peak
14	7,000	150.00	32.5	Ladder Peak
15	10,380	75.00	10.9	Upper Marker

Assay Class: High Sensitivity DNA Assay
 Data Path: C:\...r1_High Sensitivity DNA Assay_DE34903152_2025-01-08_001.xad

Created: 1/8/2025 1:15:12 PM
 Modified: 1/8/2025 1:56:23 PM

Electropherogram Summary Continued ...



Overall Results for sample 1 : 71A_cDNA

Number of peaks found: 11 Corr. Area 1: 392.8
 Noise: 0.1

Peak table for sample 1 : 71A_cDNA

Peak	Size [bp]	Conc. [pg/μl]	Molarity [pmol/l]	Observations
1	35	125.00	5,411.3	Lower Marker
2	501	16.35	49.4	
3	564	47.14	126.7	
4	591	18.83	48.3	
5	689	192.86	424.2	
6	785	138.31	266.8	
7	1,030	146.64	215.7	
8	1,255	178.21	215.1	
9	1,666	36.10	32.8	
10	1,829	84.32	69.8	
11	2,382	31.83	20.2	
12	2,963	12.42	6.4	
13	10,380	75.00	10.9	Upper Marker

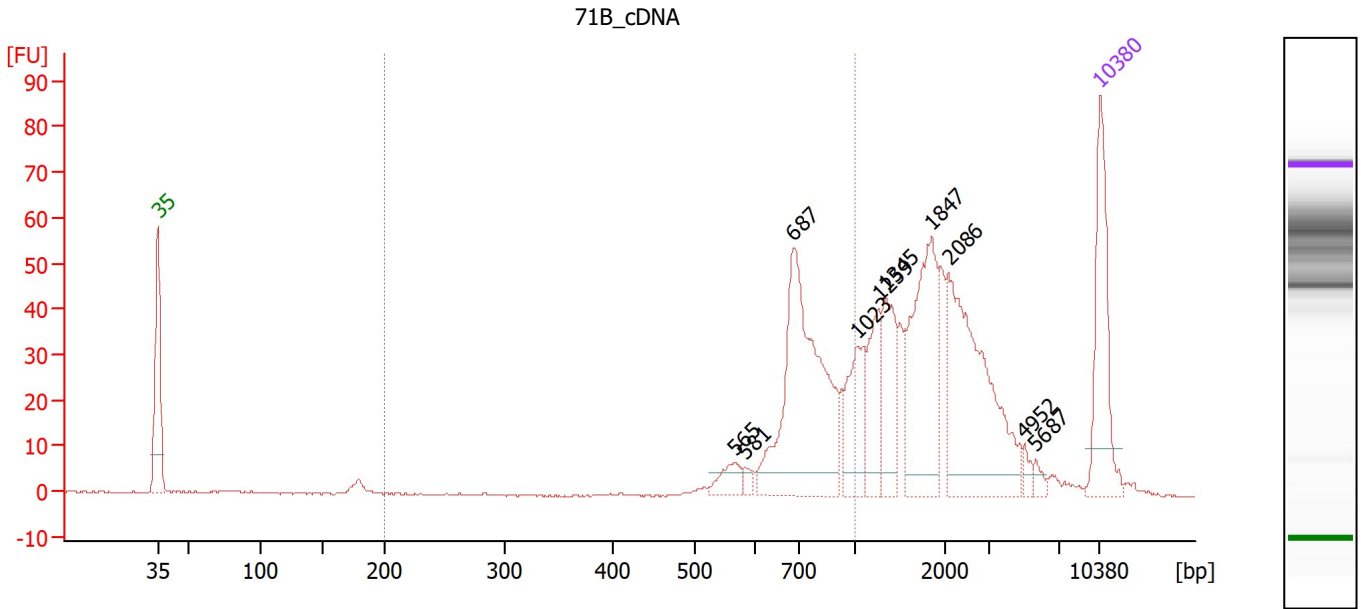
Region table for sample 1 : 71A_cDNA

From [bp]	To [bp]	Corr. Area	% of Total	Average Size [bp]	Size distribution in CV [%]	Conc. [pg/μl]	Molarity [pmol/l]	Color
200	1,000	392.8	49	739	19.1	558.45	1,207.4	Blue

Assay Class: High Sensitivity DNA Assay
 Data Path: C:\...r1_High Sensitivity DNA Assay_DE34903152_2025-01-08_001.xad

Created: 1/8/2025 1:15:12 PM
 Modified: 1/8/2025 1:56:23 PM

Electropherogram Summary Continued ...



Overall Results for sample 2 : 71B_cDNA

Number of peaks found: 10 Corr. Area 1: 231.6
 Noise: 0.2

Peak table for sample 2 : 71B_cDNA

Peak	Size [bp]	Conc. [pg/μl]	Molarity [pmol/l]	Observations
1	35	125.00	5,411.3	Lower Marker
2	565	18.62	49.9	
3	581	6.40	16.7	
4	687	229.61	506.1	
5	1,023	58.57	86.7	
6	1,259	49.72	59.8	
7	1,345	53.97	60.8	
8	1,847	116.24	95.3	
9	2,086	156.73	113.9	
10	4,952	6.32	1.9	
11	5,687	5.54	1.5	
12	10,380	75.00	10.9	Upper Marker

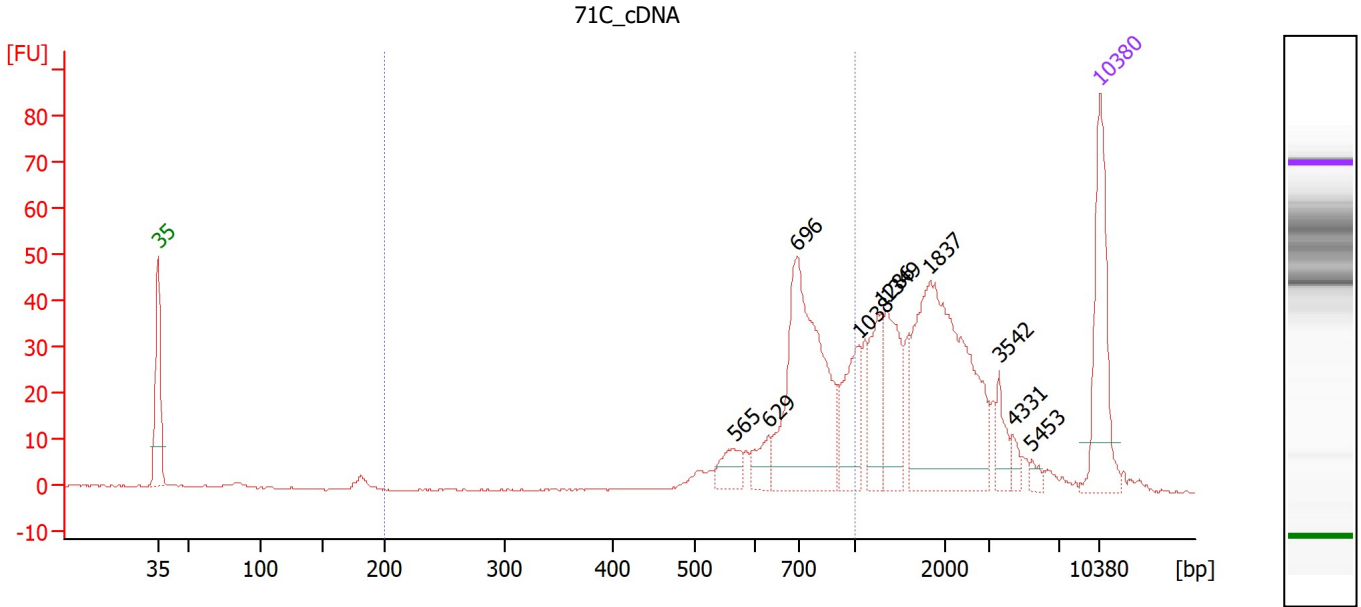
Region table for sample 2 : 71B_cDNA

From [bp]	To [bp]	Corr. Area	% of Total	Average Size [bp]	Size distribution in CV [%]	Conc. [pg/μl]	Molarity [pmol/l]	Color
200	1,000	231.6	33	754	16.0	286.41	591.3	Blue

Assay Class: High Sensitivity DNA Assay
 Data Path: C:\...r1_High Sensitivity DNA Assay_DE34903152_2025-01-08_001.xad

Created: 1/8/2025 1:15:12 PM
 Modified: 1/8/2025 1:56:23 PM

Electropherogram Summary Continued ...



Overall Results for sample 3 : 71C_cDNA

Number of peaks found: 10 Corr. Area 1: 252.9
 Noise: 0.2

Peak table for sample 3 : 71C_cDNA

Peak	Size [bp]	Conc. [pg/μl]	Molarity [pmol/l]	Observations
1	35	125.00	5,411.3	Lower Marker
2	565	23.01	61.7	
3	629	20.45	49.3	
4	696	206.78	450.1	
5	1,038	48.79	71.2	
6	1,286	43.95	51.8	
7	1,349	58.86	66.1	
8	1,837	203.90	168.2	
9	3,542	18.81	8.0	
10	4,331	7.46	2.6	
11	5,453	5.47	1.5	
12	10,380	75.00	10.9	Upper Marker

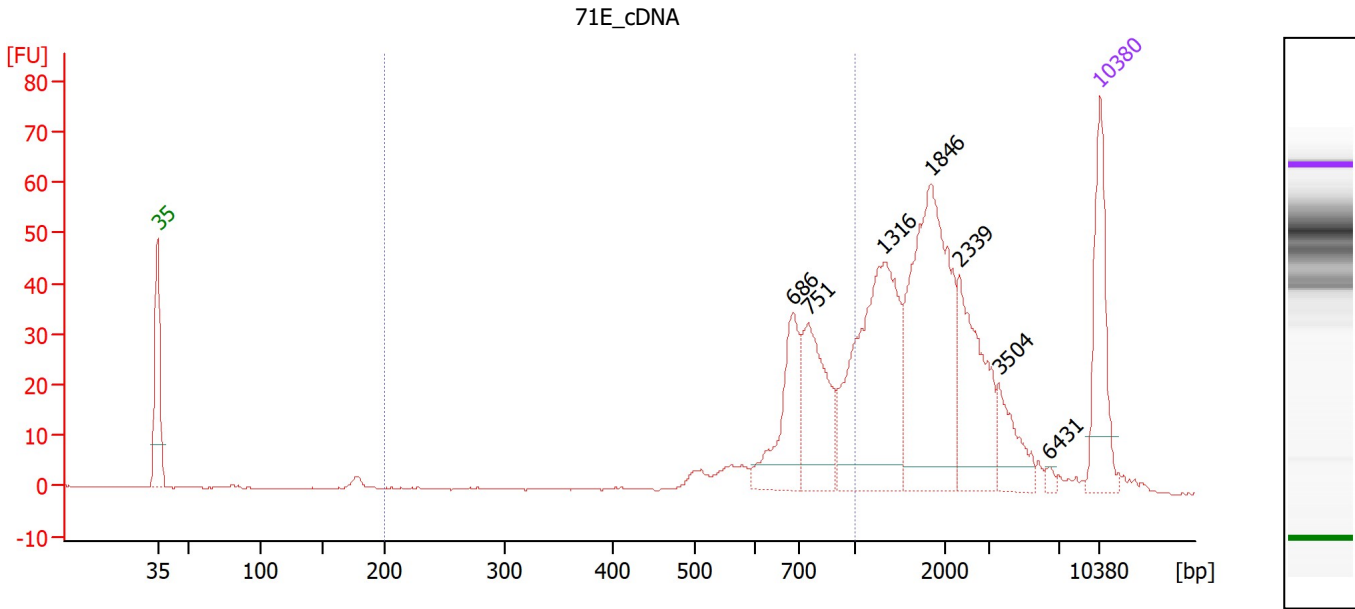
Region table for sample 3 : 71C_cDNA

From [bp]	To [bp]	Corr. Area	% of Total	Average Size [bp]	Size distribution in CV [%]	Conc. [pg/μl]	Molarity [pmol/l]	Color
200	1,000	252.9	37	739	17.8	313.18	667.5	Blue

Assay Class: High Sensitivity DNA Assay
 Data Path: C:\...r1_High Sensitivity DNA Assay_DE34903152_2025-01-08_001.xad

Created: 1/8/2025 1:15:12 PM
 Modified: 1/8/2025 1:56:23 PM

Electropherogram Summary Continued ...



Overall Results for sample 4 : 71E_cDNA

Number of peaks found: 7 Corr. Area 1: 202.0
 Noise: 0.2

Peak table for sample 4 : 71E_cDNA

Peak	Size [bp]	Conc. [pg/μl]	Molarity [pmol/l]	Observations
1	35	125.00	5,411.3	Lower Marker
2	686	93.98	207.4	
3	751	109.41	220.8	
4	1,316	214.34	246.8	
5	1,846	227.96	187.1	
6	2,339	100.08	64.8	
7	3,504	40.21	17.4	
8	6,431	3.77	0.9	
9	10,380	75.00	10.9	Upper Marker

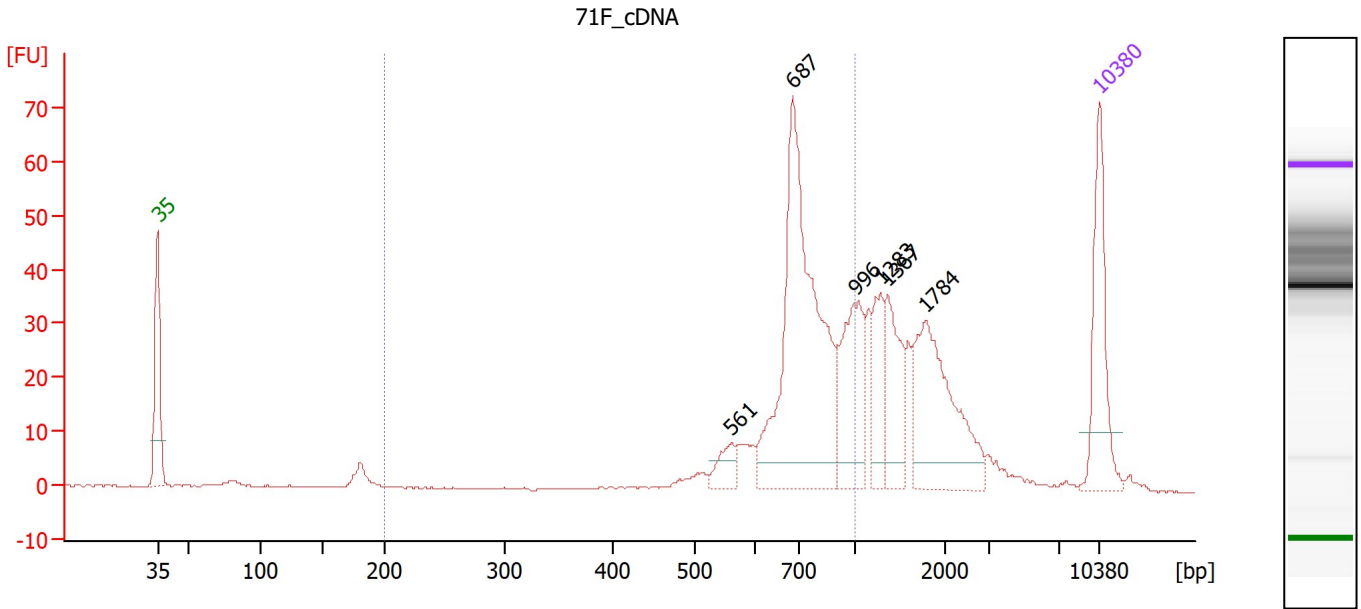
Region table for sample 4 : 71E_cDNA

From [bp]	To [bp]	Corr. Area	% of Total	Average Size [bp]	Size distribution in CV [%]	Conc. [pg/μl]	Molarity [pmol/l]	Color
200	1,000	202.0	29	747	18.3	291.89	621.2	Blue

Assay Class: High Sensitivity DNA Assay
 Data Path: C:\...r1_High Sensitivity DNA Assay_DE34903152_2025-01-08_001.xad

Created: 1/8/2025 1:15:12 PM
 Modified: 1/8/2025 1:56:23 PM

Electropherogram Summary Continued ...



Overall Results for sample 5 : 71F_cDNA

Number of peaks found: 6 Corr. Area 1: 298.2
 Noise: 0.2

Peak table for sample 5 : 71F_cDNA

Peak	Size [bp]	Conc. [pg/μl]	Molarity [pmol/l]	Observations
1	35	125.00	5,411.3	Lower Marker
2	561	22.82	61.6	
3	687	335.57	740.3	
4	996	91.31	139.0	
5	1,283	47.92	56.6	
6	1,367	60.21	66.8	
7	1,784	130.30	110.6	
8	10,380	75.00	10.9	Upper Marker

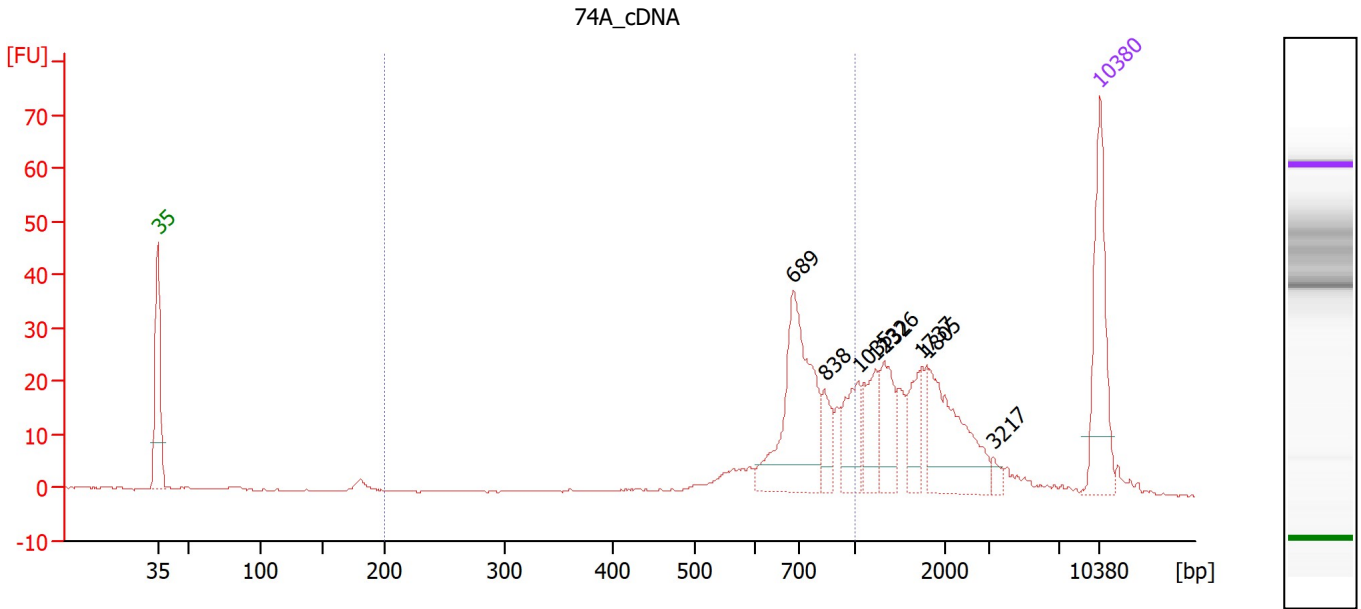
Region table for sample 5 : 71F_cDNA

From [bp]	To [bp]	Corr. Area	% of Total	Average Size [bp]	Size distribution in CV [%]	Conc. [pg/μl]	Molarity [pmol/l]	Color
200	1,000	298.2	50	736	18.3	463.65	1,006.6	Blue

Assay Class: High Sensitivity DNA Assay
 Data Path: C:\...r1_High Sensitivity DNA Assay_DE34903152_2025-01-08_001.xad

Created: 1/8/2025 1:15:12 PM
 Modified: 1/8/2025 1:56:23 PM

Electropherogram Summary Continued ...



Overall Results for sample 6 : 74A_cDNA

Number of peaks found: 8 Corr. Area 1: 160.8
 Noise: 0.2

Peak table for sample 6 : 74A_cDNA

Peak	Size [bp]	Conc. [pg/μl]	Molarity [pmol/l]	Observations
1	35	125.00	5,411.3	Lower Marker
2	689	151.82	333.9	
3	838	26.74	48.4	
4	1,035	42.50	62.2	
5	1,232	37.07	45.6	
6	1,326	38.15	43.6	
7	1,737	29.98	26.2	
8	1,805	86.61	72.7	
9	3,217	6.07	2.9	
10	10,380	75.00	10.9	Upper Marker

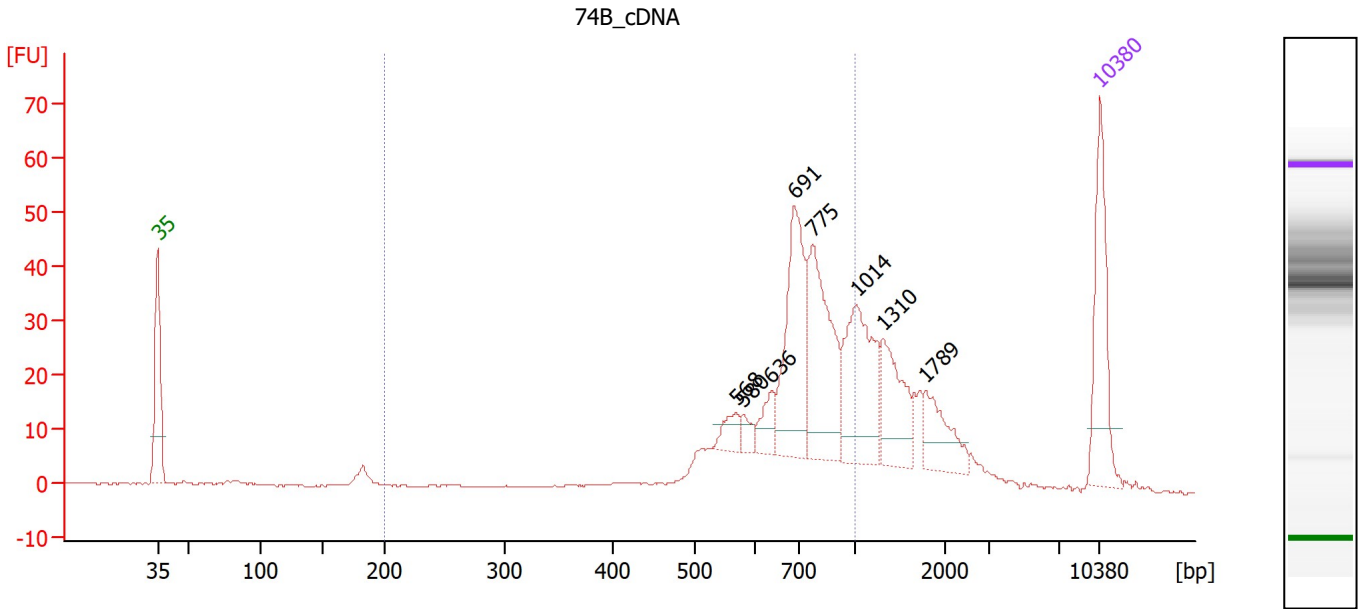
Region table for sample 6 : 74A_cDNA

From [bp]	To [bp]	Corr. Area	% of Total	Average Size [bp]	Size distribution in CV [%]	Conc. [pg/μl]	Molarity [pmol/l]	Color
200	1,000	160.8	43	748	16.9	248.08	519.8	Blue

Assay Class: High Sensitivity DNA Assay
 Data Path: C:\...r1_High Sensitivity DNA Assay_DE34903152_2025-01-08_001.xad

Created: 1/8/2025 1:15:12 PM
 Modified: 1/8/2025 1:56:23 PM

Electropherogram Summary Continued ...



Overall Results for sample 7 : 74B_cDNA

Number of peaks found: 8 Corr. Area 1: 317.8
 Noise: 0.2

Peak table for sample 7 : 74B_cDNA

Peak	Size [bp]	Conc. [pg/μl]	Molarity [pmol/l]	Observations
1	35	125.00	5,411.3	Lower Marker
2	568	18.95	50.5	
3	580	11.36	29.7	
4	636	23.20	55.2	
5	691	131.27	287.8	
6	775	130.97	256.0	
7	1,014	105.61	157.7	
8	1,310	63.31	73.2	
9	1,789	41.75	35.4	
10	10,380	75.00	10.9	Upper Marker

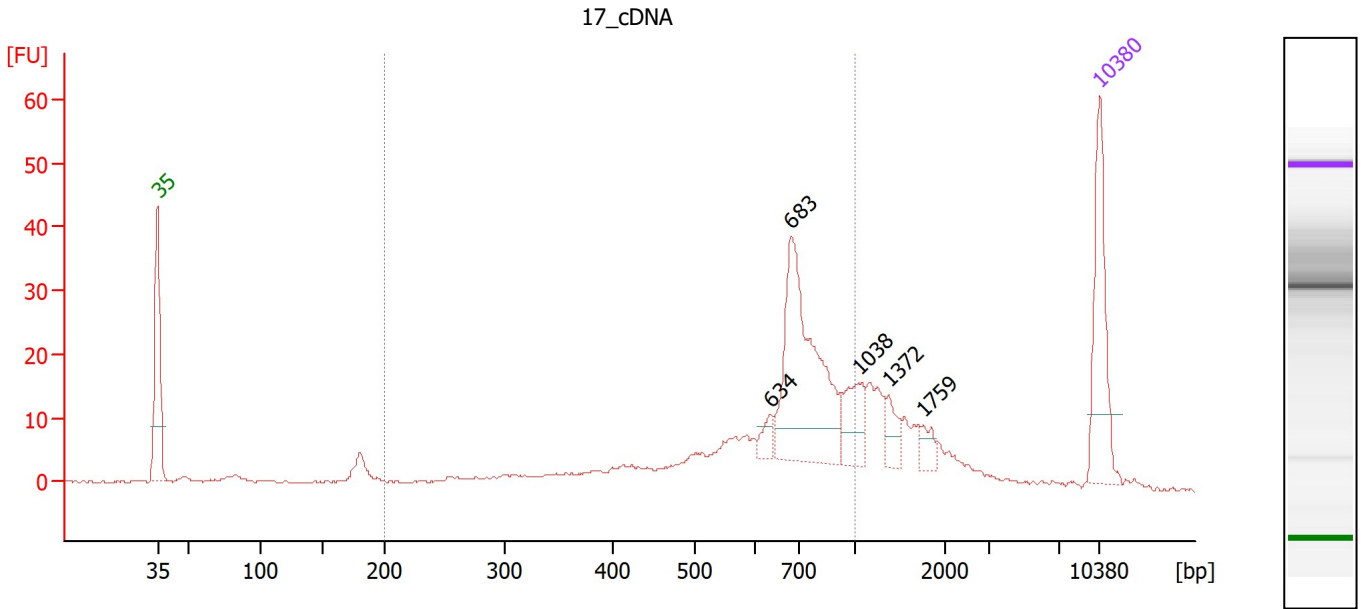
Region table for sample 7 : 74B_cDNA

From [bp]	To [bp]	Corr. Area	% of Total	Average Size [bp]	Size distribution in CV [%]	Conc. [pg/μl]	Molarity [pmol/l]	Color
200	1,000	317.8	60	719	20.1	526.19	1,184.1	Blue

Assay Class: High Sensitivity DNA Assay
 Data Path: C:\...r1_High Sensitivity DNA Assay_DE34903152_2025-01-08_001.xad

Created: 1/8/2025 1:15:12 PM
 Modified: 1/8/2025 1:56:23 PM

Electropherogram Summary Continued ...



Overall Results for sample 8 : 17_cDNA

Number of peaks found: 5 Corr. Area 1: 245.6
 Noise: 0.2

Peak table for sample 8 : 17_cDNA

Peak	Size [bp]	Conc. [pg/μl]	Molarity [pmol/l]	Observations
1	35	125.00	5,411.3	Lower Marker
2	634	13.64	32.6	
3	683	199.44	442.2	
4	1,038	40.24	58.8	
5	1,372	18.73	20.7	
6	1,759	12.70	10.9	
7	10,380	75.00	10.9	Upper Marker

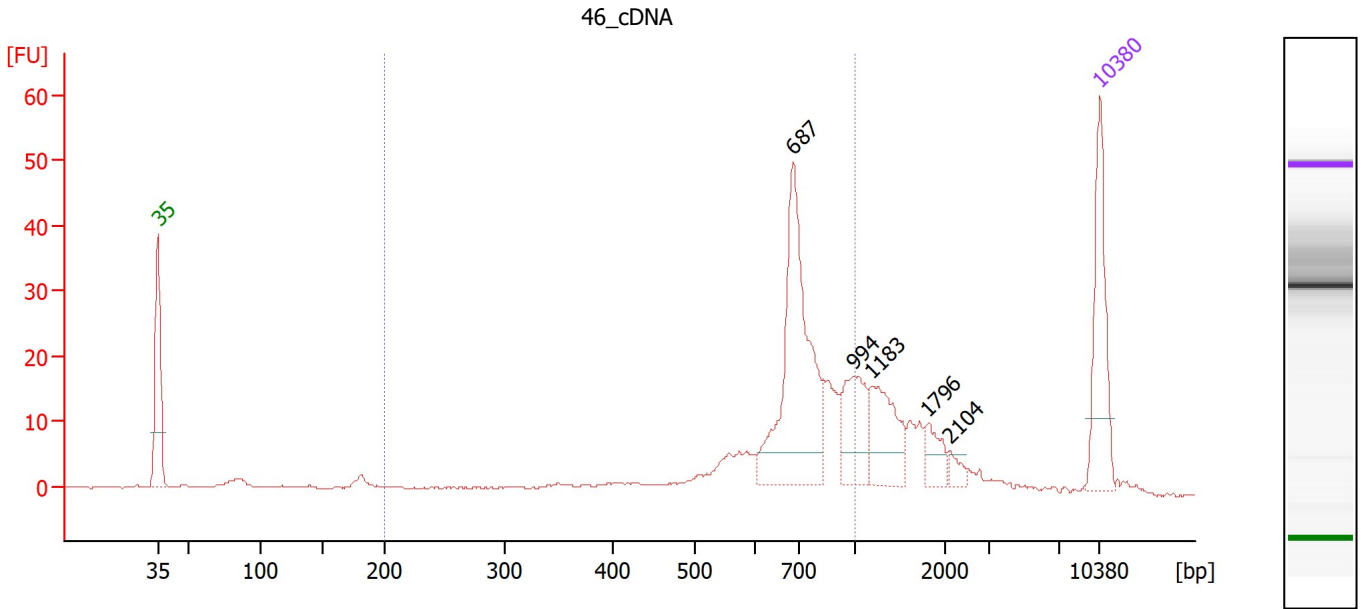
Region table for sample 8 : 17_cDNA

From [bp]	To [bp]	Corr. Area	% of Total	Average Size [bp]	Size distribution in CV [%]	Conc. [pg/μl]	Molarity [pmol/l]	Color
200	1,000	245.6	64	653	27.9	506.97	1,381.3	Blue

Assay Class: High Sensitivity DNA Assay
 Data Path: C:\...r1_High Sensitivity DNA Assay_DE34903152_2025-01-08_001.xad

Created: 1/8/2025 1:15:12 PM
 Modified: 1/8/2025 1:56:23 PM

Electropherogram Summary Continued ...



Overall Results for sample 9 : 46_cDNA

Number of peaks found: 5 Corr. Area 1: 198.9
 Noise: 0.2

Peak table for sample 9 : 46_cDNA

Peak	Size [bp]	Conc. [pg/μl]	Molarity [pmol/l]	Observations
1	35	125.00	5,411.3	Lower Marker
2	687	226.06	498.9	
3	994	61.42	93.6	
4	1,183	61.59	78.9	
5	1,796	21.39	18.1	
6	2,104	8.44	6.1	
7	10,380	75.00	10.9	Upper Marker

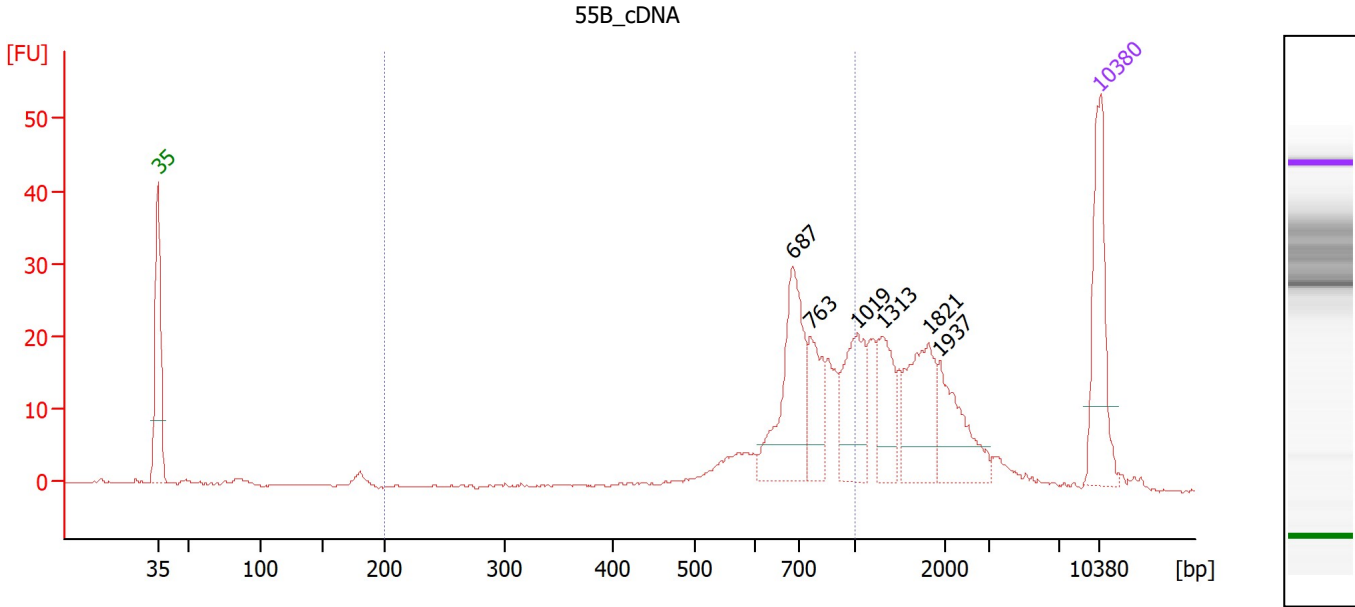
Region table for sample 9 : 46_cDNA

From [bp]	To [bp]	Corr. Area	% of Total	Average Size [bp]	Size distribution in CV [%]	Conc. [pg/μl]	Molarity [pmol/l]	Color
200	1,000	198.9	61	701	22.4	412.16	991.8	Blue

Assay Class: High Sensitivity DNA Assay
 Data Path: C:\...r1_High Sensitivity DNA Assay_DE34903152_2025-01-08_001.xad

Created: 1/8/2025 1:15:12 PM
 Modified: 1/8/2025 1:56:23 PM

Electropherogram Summary Continued ...



Overall Results for sample 10 : 55B_cDNA

Number of peaks found: 6 Corr. Area 1: 151.2
 Noise: 0.2

Peak table for sample 10 : 55B_cDNA

Peak	Size [bp]	Conc. [pg/μl]	Molarity [pmol/l]	Observations
1	35	125.00	5,411.3	Lower Marker
2	687	119.99	264.8	
3	763	52.18	103.6	
4	1,019	69.78	103.8	
5	1,313	46.78	54.0	
6	1,821	71.56	59.5	
7	1,937	56.44	44.1	
8	10,380	75.00	10.9	Upper Marker

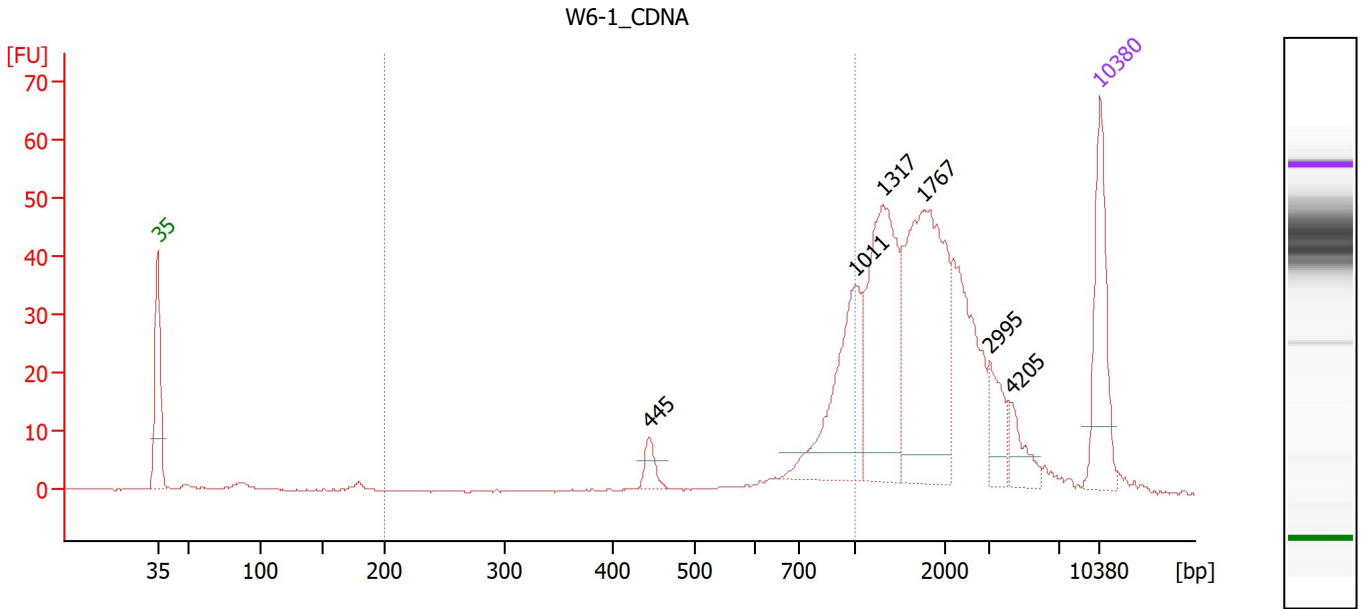
Region table for sample 10 : 55B_cDNA

From [bp]	To [bp]	Corr. Area	% of Total	Average Size [bp]	Size distribution in CV [%]	Conc. [pg/μl]	Molarity [pmol/l]	Color
200	1,000	151.2	47	744	18.3	301.67	641.5	Blue

Assay Class: High Sensitivity DNA Assay
 Data Path: C:\...r1_High Sensitivity DNA Assay_DE34903152_2025-01-08_001.xad

Created: 1/8/2025 1:15:12 PM
 Modified: 1/8/2025 1:56:23 PM

Electropherogram Summary Continued ...



Overall Results for sample 11 : W6-1_CDNA

Number of peaks found: 6 Corr. Area 1: 101.8
 Noise: 0.1

Peak table for sample 11 : W6-1_CDNA

Peak	Size [bp]	Conc. [pg/μl]	Molarity [pmol/l]	Observations
1	35	125.00	5,411.3	Lower Marker
2	445	17.17	58.5	
3	1,011	122.63	183.7	
4	1,317	166.19	191.2	
5	1,767	212.92	182.5	
6	2,995	30.14	15.2	
7	4,205	23.07	8.3	
8	10,380	75.00	10.9	Upper Marker

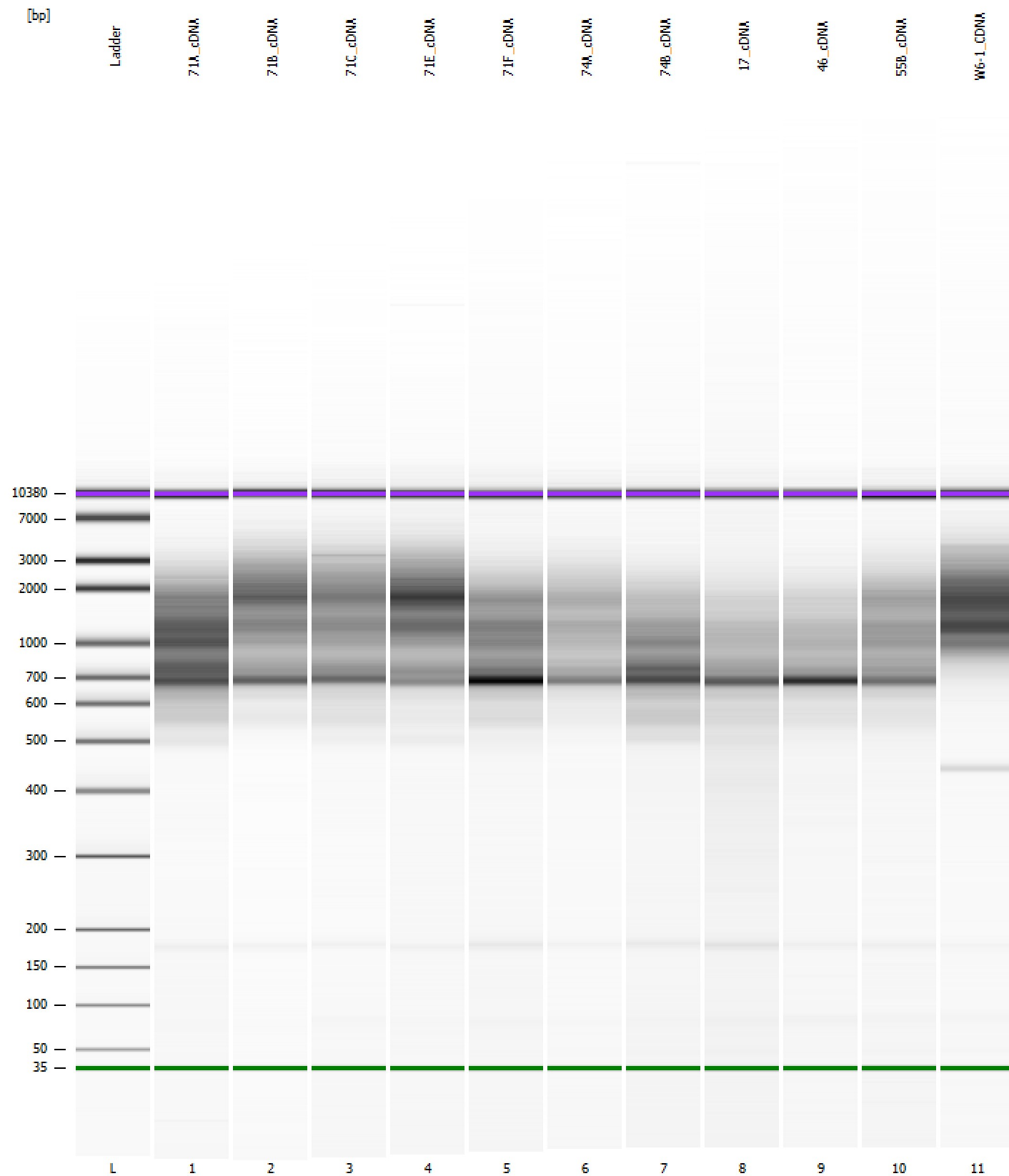
Region table for sample 11 : W6-1_CDNA

From [bp]	To [bp]	Corr. Area	% of Total	Average Size [bp]	Size distribution in CV [%]	Conc. [pg/μl]	Molarity [pmol/l]	Color
200	1,000	101.8	18	793	23.6	166.94	358.3	Blue

Assay Class: High Sensitivity DNA Assay
Data Path: C:\...r1_High Sensitivity DNA Assay_DE34903152_2025-01-08_001.xad

Created: 1/8/2025 1:15:12 PM
Modified: 1/8/2025 1:56:23 PM

Gel Image



Assay Class: High Sensitivity DNA Assay Created: 1/8/2025 1:15:12 PM
 Data Path: C:\...r1_High Sensitivity DNA Assay_DE34903152_2025-01-08_001.xad Modified: 1/8/2025 1:56:23 PM

Run Logbook

Description	Number	Source	Category	Sub Category	Time	Time Zone	User	Host
Run ended on port 1 (Number of wells acquired: 12)		Instrument	Run		1/8/2025 1:56:18 PM	(GMT --08:00) Pacific Standard Time	sbsuser	DESKTOP-4UNV VOB
Run started on port 1 (File: C:\Program Files (x86)\Agilent\2100 bioanalyzer\2100 expert\data\2025-01-08\Bioanalyzer1_High Sensitivity DNA Assay_DE34903152_2025-01-08_001.xad)		Instrument	Run		1/8/2025 1:15:19 PM	(GMT --08:00) Pacific Standard Time	sbsuser	DESKTOP-4UNV VOB
Product Number : G2938C		Instrument	Run		1/8/2025 1:15:19 PM	(GMT --08:00) Pacific Standard Time	sbsuser	DESKTOP-4UNV VOB
Name :		Instrument	Run		1/8/2025 1:15:19 PM	(GMT --08:00) Pacific Standard Time	sbsuser	DESKTOP-4UNV VOB
Vendor : Agilent Technologies		Instrument	Run		1/8/2025 1:15:19 PM	(GMT --08:00) Pacific Standard Time	sbsuser	DESKTOP-4UNV VOB
Serial# : DE34903152		Instrument	Run		1/8/2025 1:15:19 PM	(GMT --08:00) Pacific Standard Time	sbsuser	DESKTOP-4UNV VOB
Firmware : C.01.069		Instrument	Run		1/8/2025 1:15:19 PM	(GMT --08:00) Pacific Standard Time	sbsuser	DESKTOP-4UNV VOB
Cartridge : Electrode		Instrument	Run		1/8/2025 1:15:19 PM	(GMT --08:00) Pacific Standard Time	sbsuser	DESKTOP-4UNV VOB