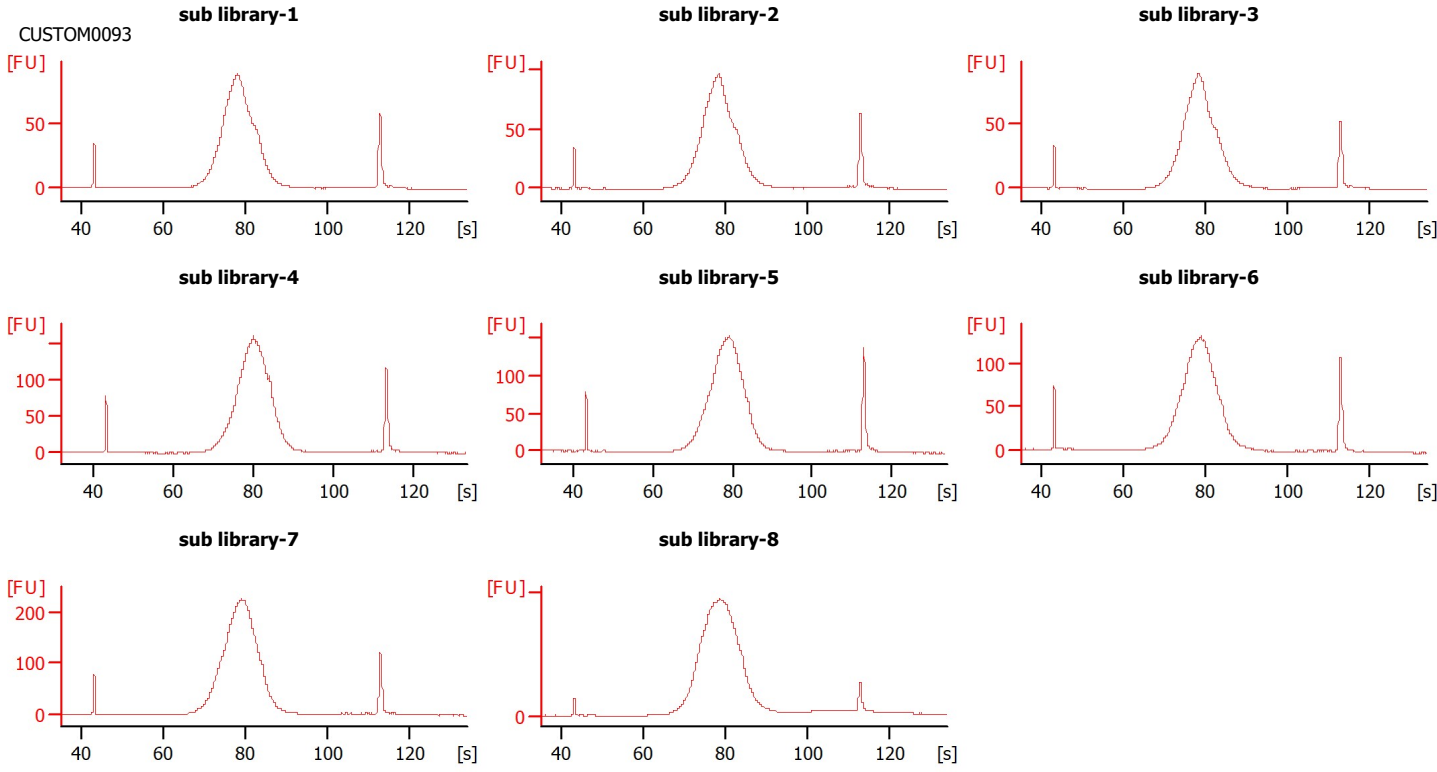
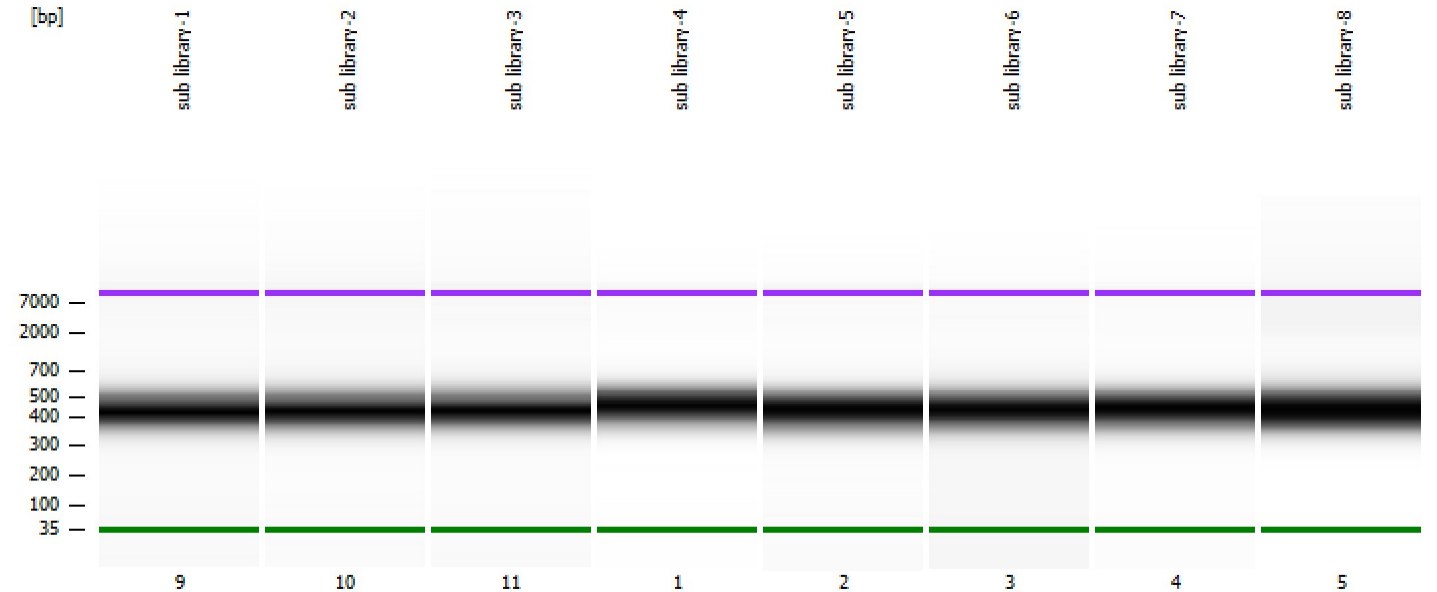


Assay Class: High Sensitivity DNA Assay  
Comparison: C:\...\t\Comparison\ComparisonFile3\_High Sensitivity DNA Assay.xac

Created: 10/29/2024 11:17:54 AM  
Modified: 10/29/2024 11:17:54 AM

**Electrophoresis File Run Summary**



Assay Class: High Sensitivity DNA Assay  
 Comparison C:\...t\Comparison\ComparisonFile3\_High Sensitivity DNA Assay.xac

Created: 10/29/2024 11:17:54 AM  
 Modified: 10/29/2024 11:17:54 AM

**Electrophoresis File Run Summary (Comparison Summary)**

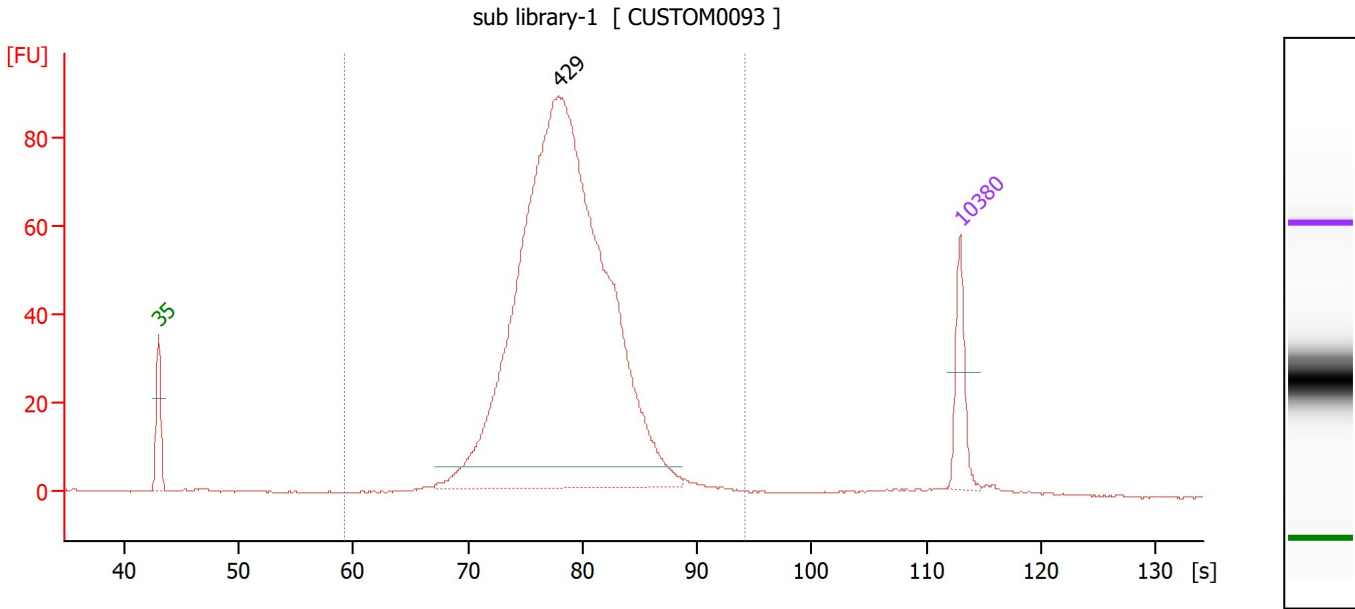
Sample Name	Sample Comment	File
sub library-1	CUSTOM0093	C:\...2100 expert\data\2024-10-29\Bioanalyzer1_High Sensitivity DNA
sub library-2		C:\...2100 expert\data\2024-10-29\Bioanalyzer1_High Sensitivity DNA
sub library-3		C:\...2100 expert\data\2024-10-29\Bioanalyzer1_High Sensitivity DNA
sub library-4		C:\...2100 expert\data\2024-10-29\Bioanalyzer1_High Sensitivity DNA
sub library-5		C:\...2100 expert\data\2024-10-29\Bioanalyzer1_High Sensitivity DNA
sub library-6		C:\...2100 expert\data\2024-10-29\Bioanalyzer1_High Sensitivity DNA
sub library-7		C:\...2100 expert\data\2024-10-29\Bioanalyzer1_High Sensitivity DNA
sub library-8		C:\...2100 expert\data\2024-10-29\Bioanalyzer1_High Sensitivity DNA

**Comparison Comments :**

Assay Class: High Sensitivity DNA Assay  
 Comparison: C:\...t\Comparison\ComparisonFile3\_High Sensitivity DNA Assay.xac

Created: 10/29/2024 11:17:54 AM  
 Modified: 10/29/2024 11:17:54 AM

**Electropherogram Summary**



**Overall Results for sample 1 : sub library-1**

Number of peaks found: 1                      Corr. Area 1: 998.7  
 Noise: 0.1

**Peak table for sample 1 : sub library-1**

Peak	Size [bp]	Conc. [pg/μl]	Molarity [pmol/l]	Observations
1	35	125.00	5,411.3	Lower Marker
2	429	2,260.41	7,976.4	
3	10,380	75.00	10.9	Upper Marker

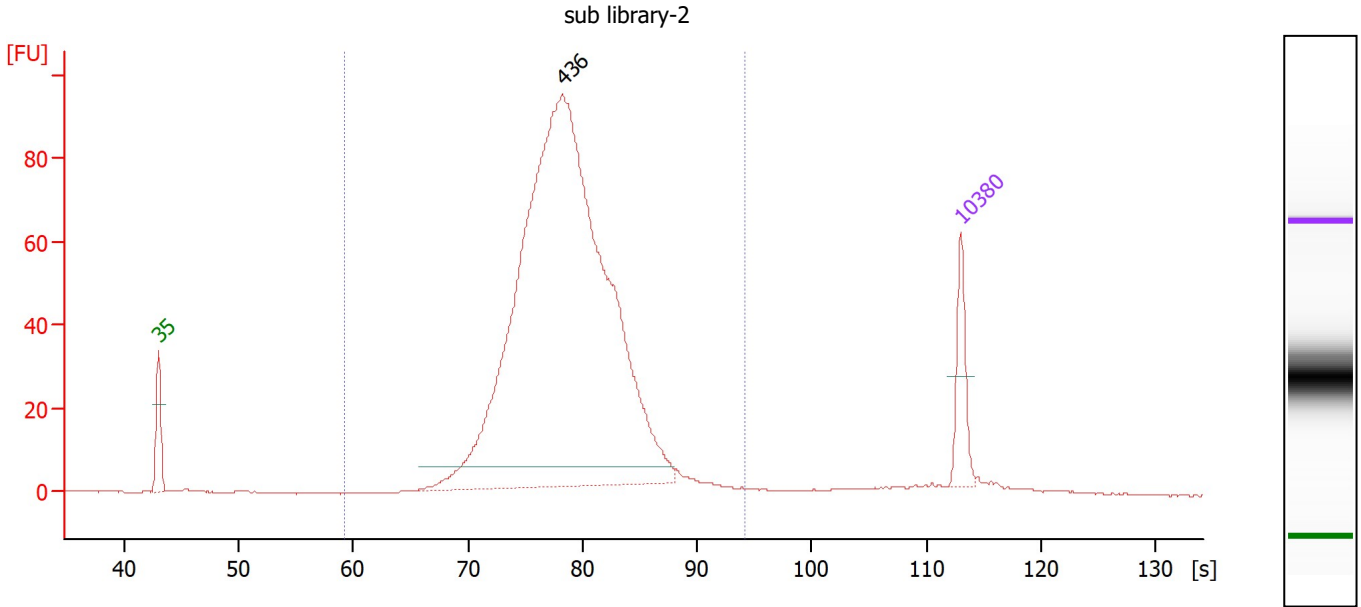
**Region table for sample 1 : sub library-1**

From [s]	To [s]	Corr. Area	% of Total	Average Size [bp]	Size distribution in CV [%]	Conc. [pg/μl]	Molarity [pmol/l]	Color
59.29	94.17	998.7	97	446	16.8	2,371.63	8,315.0	Blue

Assay Class: High Sensitivity DNA Assay  
 Comparison C:\...t\Comparison\ComparisonFile3\_High Sensitivity DNA Assay.xac

Created: 10/29/2024 11:17:54 AM  
 Modified: 10/29/2024 11:17:54 AM

**Electropherogram Summary Continued ...**



**Overall Results for sample 2 : sub library-2**

Number of peaks found: 1                      Corr. Area 1: 1,068.3  
 Noise: 0.2

**Peak table for sample 2 : sub library-2**

Peak	Size [bp]	Conc. [pg/μl]	Molarity [pmol/l]	Observations
1	35	125.00	5,411.3	Lower Marker
2	436	2,282.36	7,928.5	
3	10,380	75.00	10.9	Upper Marker

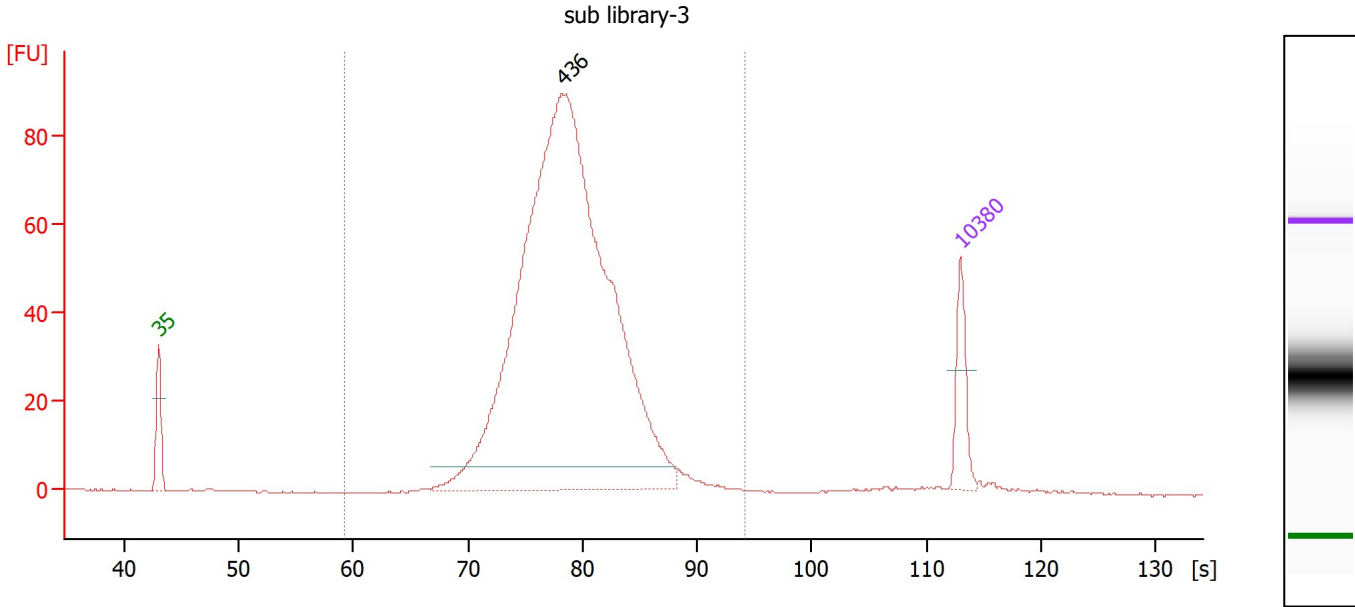
**Region table for sample 2 : sub library-2**

From [s]	To [s]	Corr. Area	% of Total	Average Size [bp]	Size distribution in CV [%]	Conc. [pg/μl]	Molarity [pmol/l]	Color
59.29	94.17	1,068.3	95	448	17.5	2,428.80	8,491.6	Blue

Assay Class: High Sensitivity DNA Assay  
 Comparison C:\...t\Comparison\ComparisonFile3\_High Sensitivity DNA Assay.xac

Created: 10/29/2024 11:17:54 AM  
 Modified: 10/29/2024 11:17:54 AM

**Electropherogram Summary Continued ...**



**Overall Results for sample 3 : sub library-3**

Number of peaks found: 1                      Corr. Area 1: 969.6  
 Noise: 0.2

**Peak table for sample 3 : sub library-3**

Peak	Size [bp]	Conc. [pg/μl]	Molarity [pmol/l]	Observations
1	35	125.00	5,411.3	Lower Marker
2	436	2,304.18	8,003.7	
3	10,380	75.00	10.9	Upper Marker

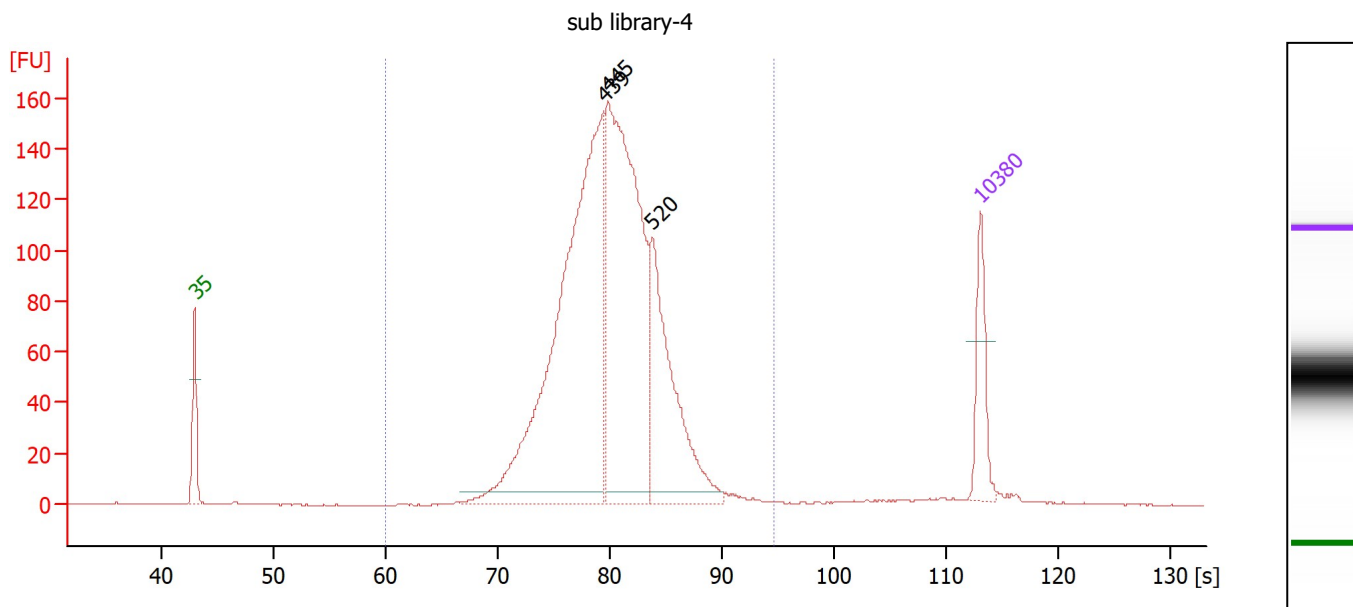
**Region table for sample 3 : sub library-3**

From [s]	To [s]	Corr. Area	% of Total	Average Size [bp]	Size distribution in CV [%]	Conc. [pg/μl]	Molarity [pmol/l]	Color
59.29	94.17	969.6	97	450	16.7	2,385.35	8,272.9	Blue

Assay Class: High Sensitivity DNA Assay  
 Comparison C:\...\t\Comparison\ComparisonFile3\_High Sensitivity DNA Assay.xac

Created: 10/29/2024 11:17:54 AM  
 Modified: 10/29/2024 11:17:54 AM

**Electropherogram Summary Continued ...**



**Overall Results for sample 4 : sub library-4**

Number of peaks found: 3                      Corr. Area 1: 1,903.0  
 Noise: 0.2

**Peak table for sample 4 : sub library-4**

Peak	Size [bp]	Conc. [pg/μl]	Molarity [pmol/l]	Observations
1	35	125.00	5,411.3	Lower Marker
2	439	985.11	3,402.9	
3	445	765.22	2,603.6	
4	520	333.20	971.5	
5	10,380	75.00	10.9	Upper Marker

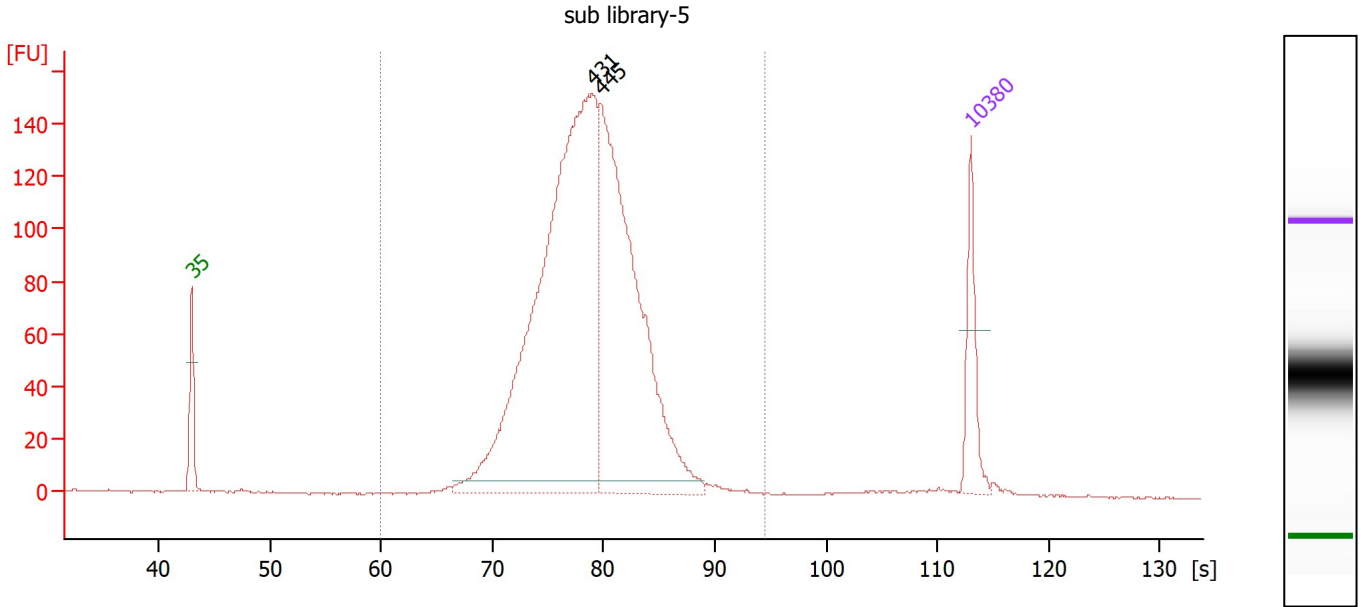
**Region table for sample 4 : sub library-4**

From [s]	To [s]	Corr. Area	% of Total	Average Size [bp]	Size distribution in CV [%]	Conc. [pg/μl]	Molarity [pmol/l]	Color
60.01	94.54	1,903.0	98	453	16.0	2,144.21	7,396.0	Blue

Assay Class: High Sensitivity DNA Assay  
 Comparison C:\...t\Comparison\ComparisonFile3\_High Sensitivity DNA Assay.xac

Created: 10/29/2024 11:17:54 AM  
 Modified: 10/29/2024 11:17:54 AM

**Electropherogram Summary Continued ...**



**Overall Results for sample 5 : sub library-5**

Number of peaks found: 2                      Corr. Area 1: 1,950.0  
 Noise: 0.2

**Peak table for sample 5 : sub library-5**

Peak	Size [bp]	Conc. [pg/μl]	Molarity [pmol/l]	Observations
1	35	125.00	5,411.3	Lower Marker
2	431	1,197.67	4,208.0	
3	445	768.07	2,616.7	
4	10,380	75.00	10.9	Upper Marker

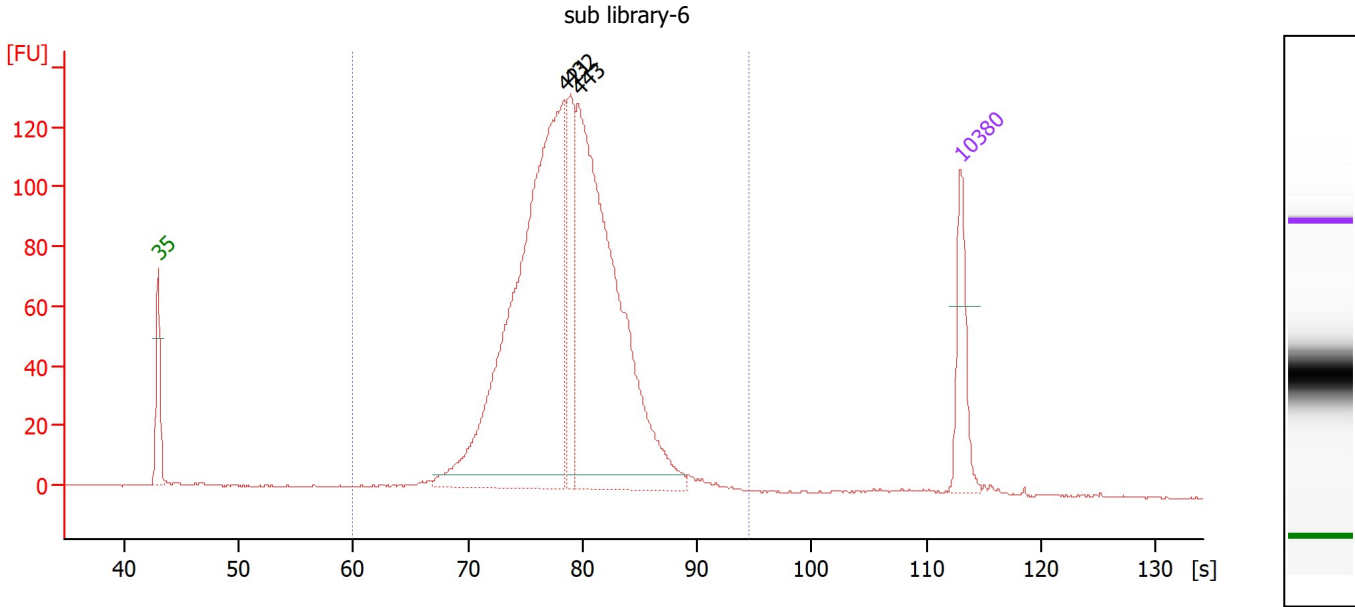
**Region table for sample 5 : sub library-5**

From [s]	To [s]	Corr. Area	% of Total	Average Size [bp]	Size distribution in CV [%]	Conc. [pg/μl]	Molarity [pmol/l]	Color
60.01	94.54	1,950.0	98	430	16.1	2,043.00	7,427.3	Blue

Assay Class: High Sensitivity DNA Assay  
 Comparison: C:\...t\Comparison\ComparisonFile3\_High Sensitivity DNA Assay.xac

Created: 10/29/2024 11:17:54 AM  
 Modified: 10/29/2024 11:17:54 AM

**Electropherogram Summary Continued ...**



**Overall Results for sample 6 : sub library-6**

Number of peaks found: 3                      Corr. Area 1: 1,696.8  
 Noise: 0.3

**Peak table for sample 6 : sub library-6**

Peak	Size [bp]	Conc. [pg/μl]	Molarity [pmol/l]	Observations
1	35	125.00	5,411.3	Lower Marker
2	421	917.53	3,300.2	
3	432	138.31	485.6	
4	443	761.59	2,606.4	
5	10,380	75.00	10.9	Upper Marker

**Region table for sample 6 : sub library-6**

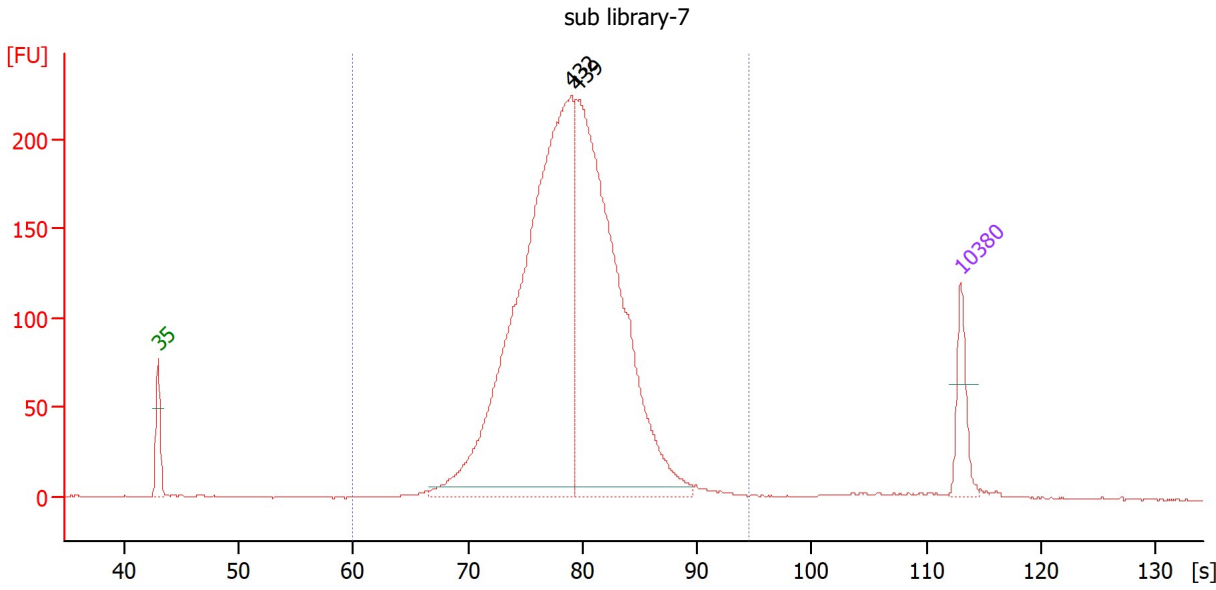
From [s]	To [s]	Corr. Area	% of Total	Average Size [bp]	Size distribution in CV [%]	Conc. [pg/μl]	Molarity [pmol/l]	Color
60.01	94.54	1,696.8	96	432	17.3	1,949.60	7,094.6	Blue



Assay Class: High Sensitivity DNA Assay  
 Comparison: C:\...t\Comparison\ComparisonFile3\_High Sensitivity DNA Assay.xac

Created: 10/29/2024 11:17:54 AM  
 Modified: 10/29/2024 11:17:54 AM

**Electropherogram Summary Continued ...**



**Overall Results for sample 7 : sub library-7**

Number of peaks found: 2                      Corr. Area 1: 2,827.5  
 Noise: 0.3

**Peak table for sample 7 : sub library-7**

Peak	Size [bp]	Conc. [pg/μl]	Molarity [pmol/l]	Observations
1	35	125.00	5,411.3	Lower Marker
2	432	1,596.89	5,601.7	
3	439	1,276.85	4,407.3	
4	10,380	75.00	10.9	Upper Marker

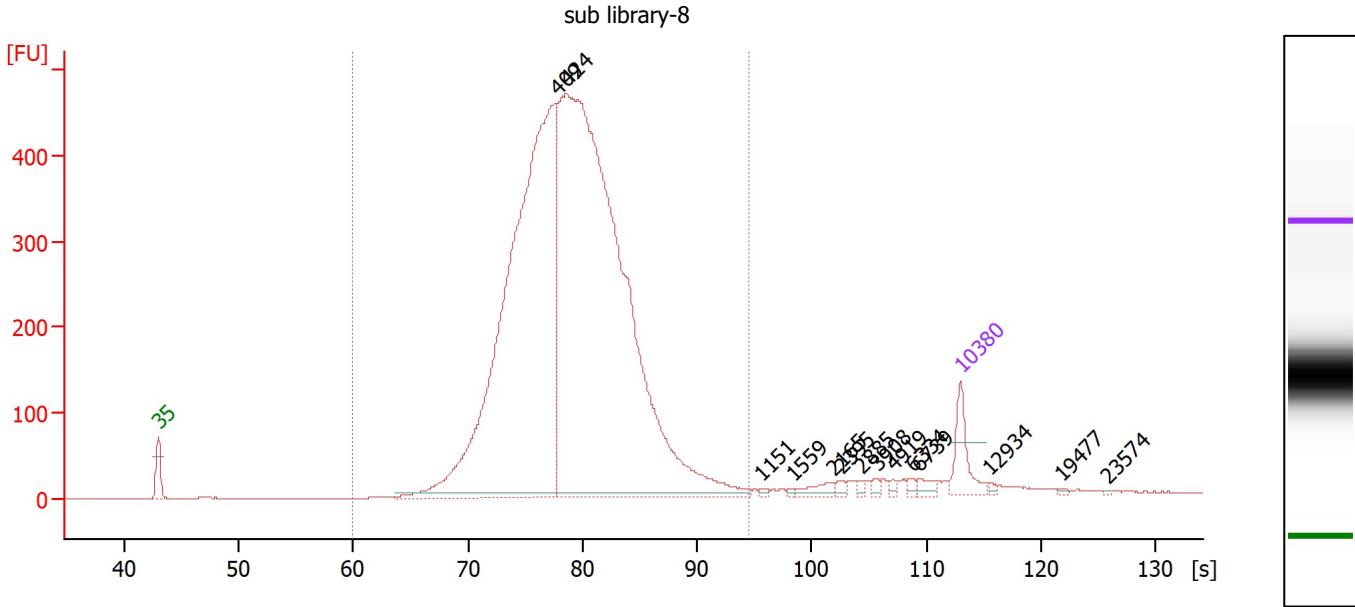
**Region table for sample 7 : sub library-7**

From [s]	To [s]	Corr. Area	% of Total	Average Size [bp]	Size distribution in CV [%]	Conc. [pg/μl]	Molarity [pmol/l]	Color
60.01	94.54	2,827.5	98	436	16.6	2,986.66	10,730.2	Blue

Assay Class: High Sensitivity DNA Assay  
 Comparison C:\...\t\Comparison\ComparisonFile3\_High Sensitivity DNA Assay.xac

Created: 10/29/2024 11:17:54 AM  
 Modified: 10/29/2024 11:17:54 AM

**Electropherogram Summary Continued ...**



**Overall Results for sample 8 : sub library-8**

Number of peaks found: 14                      Corr. Area 1: 6,708.4  
 Noise: 0.3

**Peak table for sample 8 : sub library-8**

Peak	Size [bp]	Conc. [pg/μl]	Molarity [pmol/l]	Observations
1	35	125.00	5,411.3	Lower Marker
2	409	2,247.26	8,334.9	
3	424	2,998.06	10,716.8	
4	1,151	5.00	6.6	
5	1,559	3.72	3.6	
6	2,165	23.09	16.2	
7	2,395	9.86	6.2	
8	2,885	6.57	3.4	
9	3,908	7.46	2.9	
10	4,919	7.32	2.3	
11	6,334	9.58	2.3	
12	6,739	16.56	3.7	
13	10,380	75.00	10.9	Upper Marker
14	12,934	0.00	0.0	
15	19,477	0.00	0.0	
16	23,574	0.00	0.0	

**Region table for sample 8 : sub library-8**

From [s]	To [s]	Corr. Area	% of Total	Average Size [bp]	Size distribution in CV [%]	Conc. [pg/μl]	Molarity [pmol/l]	Color
60.01	94.54	6,708.4	95	438	18.6	5,224.29	18,816.8	Blue

Assay Class: High Sensitivity DNA Assay  
Comparison: C:\...\Comparison\ComparisonFile3\_High Sensitivity DNA Assay.xac

Created: 10/29/2024 11:17:54 AM  
Modified: 10/29/2024 11:17:54 AM

**Gel Image**

