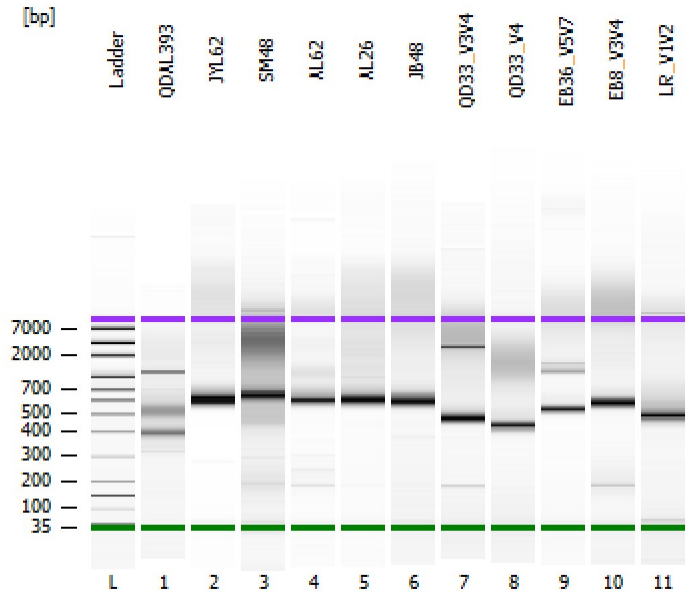


Assay Class: High Sensitivity DNA Assay
 Data Path: C:\...r1_High Sensitivity DNA Assay_DE34903152_2025-02-12_001.xad

Created: 2/12/2025 12:35:26 PM
 Modified: 2/12/2025 1:27:26 PM

Electrophoresis File Run Summary



Instrument Information:

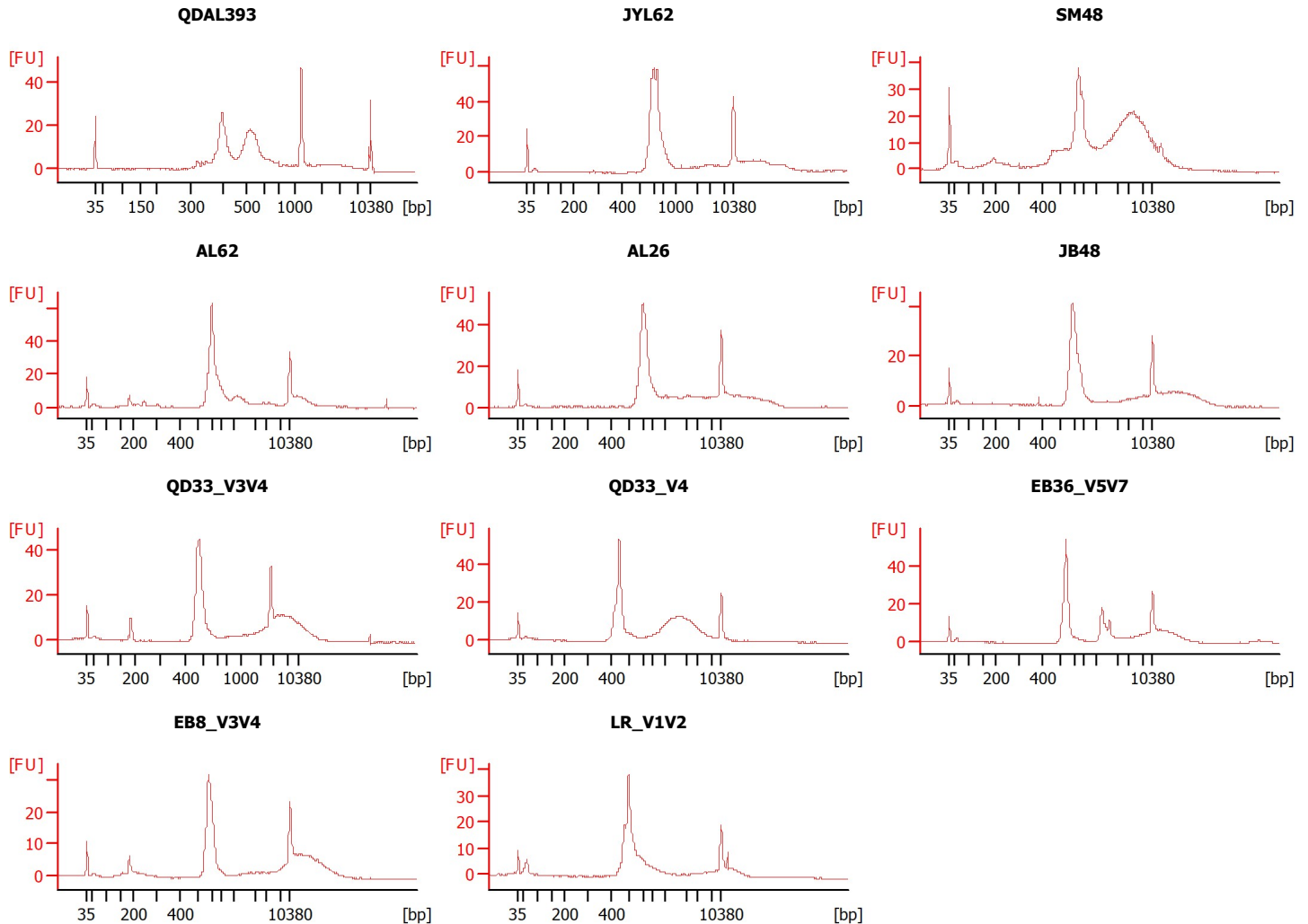
Instrument Name: DE34903152 Firmware: C.01.069
 Serial#: DE34903152 Type: G2938C

Assay Information:

Assay Origin Path: C:\Program Files (x86)\Agilent\2100 bioanalyzer\2100 expert\assays\dsDNA\High Sensitivity DNA.xsy
 Assay Class: High Sensitivity DNA Assay
 Version: 1.03
 Assay Comments: Copyright © 2003-2010 Agilent Technologies

Chip Information:

Chip Lot #: Reagent Kit Lot #:
 Chip Comments:



Assay Class: High Sensitivity DNA Assay
 Data Path: C:\...r1_High Sensitivity DNA Assay_DE34903152_2025-02-12_001.xad

Created: 2/12/2025 12:35:26 PM
 Modified: 2/12/2025 1:27:26 PM

Electrophoresis File Run Summary (Chip Summary)

Sample Name	Sample Comment	Rest. Digest	Status	Observation	Result Label	Result Color
QDAL393		<input type="checkbox"/>		✓		
JYL62		<input type="checkbox"/>		✓		
SM48		<input type="checkbox"/>		✓		
AL62		<input type="checkbox"/>		✓		
AL26		<input type="checkbox"/>		✓		
JB48		<input type="checkbox"/>		✓		
QD33_V3V4		<input type="checkbox"/>		✓		
QD33_V4		<input type="checkbox"/>		✓		
EB36_V5V7		<input type="checkbox"/>		✓		
EB8_V3V4		<input type="checkbox"/>		✓		
LR_V1V2		<input type="checkbox"/>		✓		
Ladder		<input type="checkbox"/>		✓		

Chip Lot #

Reagent Kit Lot #

Chip Comments :

Assay Class: High Sensitivity DNA Assay
 Data Path: C:\...r1_High Sensitivity DNA Assay_DE34903152_2025-02-12_001.xad

Created: 2/12/2025 12:35:26 PM
 Modified: 2/12/2025 1:27:26 PM

Electrophoresis Assay Details

General Analysis Settings

Number of Available Sample and Ladder Wells (Max.) : 12
 Minimum Visible Range [s] : 32
 Maximum Visible Range [s] : 138
 Start Analysis Time Range [s] : 33
 End Analysis Time Range [s] : 137.5
 Ladder Concentration [pg/μl] : 1950
 Uses Standard Area for Ladder Fragments
 Lower Marker Concentration [pg/μl] : 125
 Upper Marker Concentration [pg/μl] : 75
 Used Upper Marker for Quantitation
 Standard Curve Fit is Point to Point
 Show Data Aligned to Lower and Upper Marker

Integrator Settings

Integration Start Time [s] : 33.05
 Integration End Time [s] : 137
 Slope Threshold : 0.8
 Height Threshold [FU] : 5
 Area Threshold : 0.1
 Width Threshold [s] : 0.6
 Baseline Plateau [s] : 0.5

Filter Settings

Filter Width [s] : 0.5
 Polynomial Order : 4

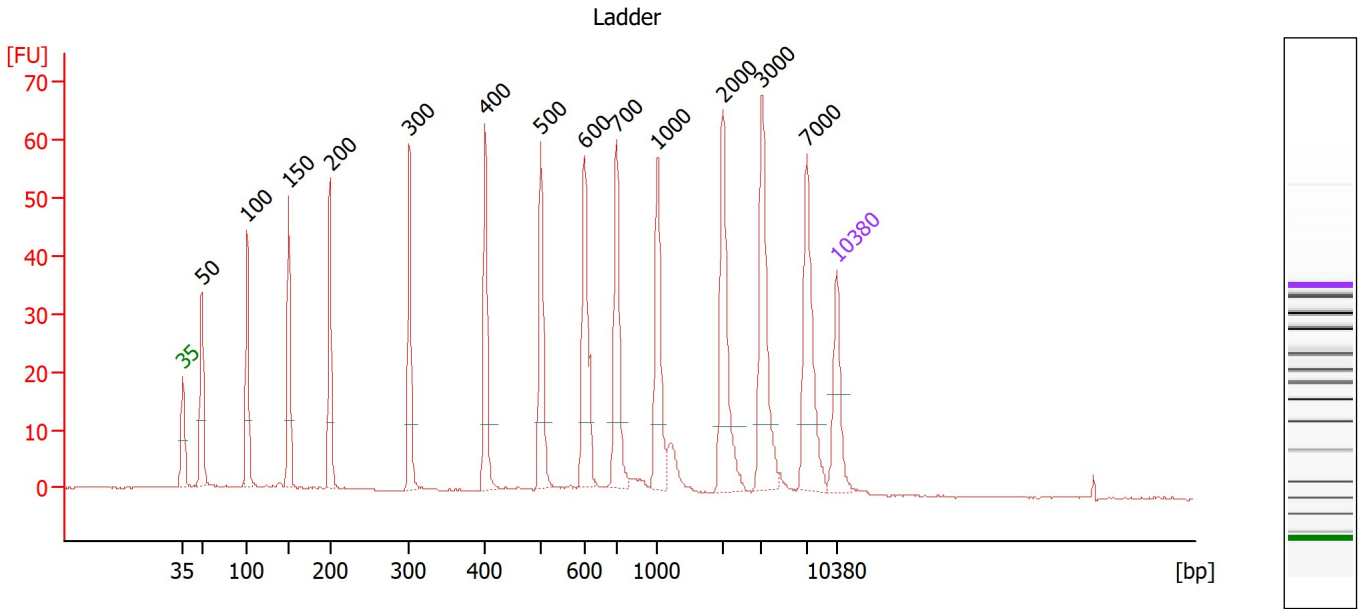
Ladder

Ladder Peak	Size	Area
1	35	160
2	50	210
3	100	208
4	150	221
5	200	242
6	300	270
7	400	305
8	500	306
9	600	336
10	700	321
11	1000	366
12	2000	413
13	3000	411
14	7000	400
15	10380	214

Assay Class: High Sensitivity DNA Assay
 Data Path: C:\...r1_High Sensitivity DNA Assay_DE34903152_2025-02-12_001.xad

Created: 2/12/2025 12:35:26 PM
 Modified: 2/12/2025 1:27:26 PM

Electropherogram Summary



Overall Results for Ladder

Noise: 0.1

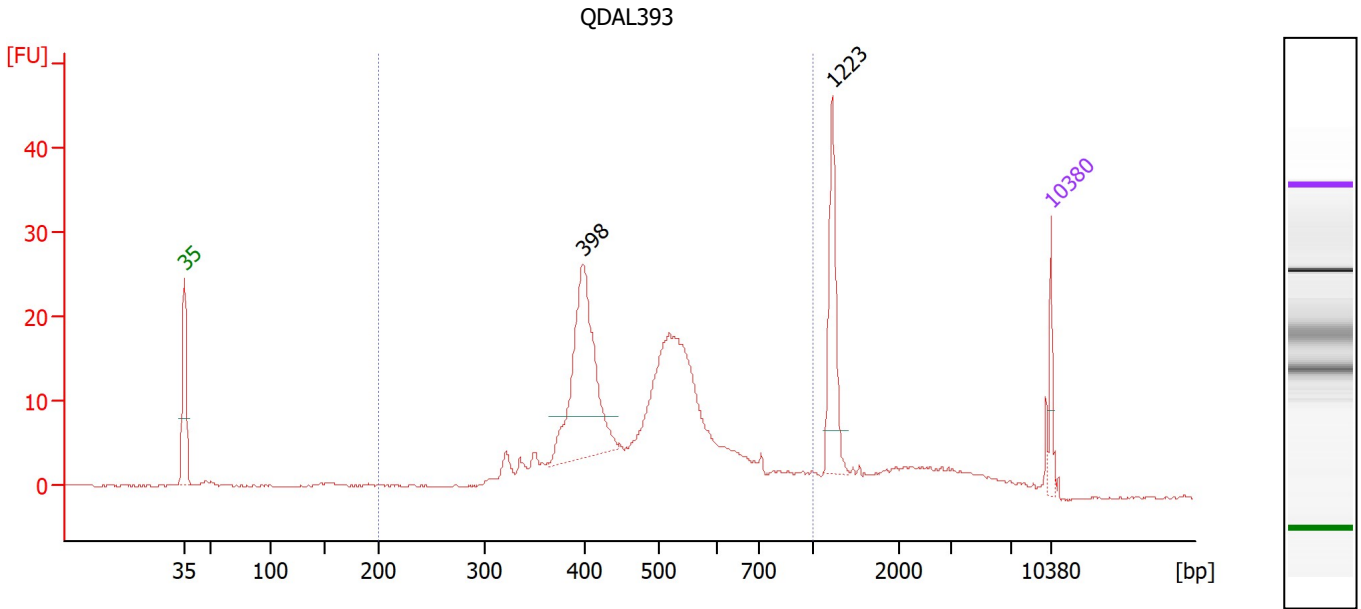
Peak table for Ladder

Peak	Size [bp]	Conc. [pg/μl]	Molarity [pmol/l]	Observations
1	35	125.00	5,411.3	Lower Marker
2	50	150.00	4,545.5	Ladder Peak
3	100	150.00	2,272.7	Ladder Peak
4	150	150.00	1,515.2	Ladder Peak
5	200	150.00	1,136.4	Ladder Peak
6	300	150.00	757.6	Ladder Peak
7	400	150.00	568.2	Ladder Peak
8	500	150.00	454.5	Ladder Peak
9	600	150.00	378.8	Ladder Peak
10	700	150.00	324.7	Ladder Peak
11	1,000	150.00	227.3	Ladder Peak
12	2,000	150.00	113.6	Ladder Peak
13	3,000	150.00	75.8	Ladder Peak
14	7,000	150.00	32.5	Ladder Peak
15	10,380	75.00	10.9	Upper Marker

Assay Class: High Sensitivity DNA Assay
 Data Path: C:\...r1_High Sensitivity DNA Assay_DE34903152_2025-02-12_001.xad

Created: 2/12/2025 12:35:26 PM
 Modified: 2/12/2025 1:27:26 PM

Electropherogram Summary Continued ...



Overall Results for sample 1 : QDAL393

Number of peaks found: 2 Corr. Area 1: 275.1
 Noise: 0.1

Peak table for sample 1 : QDAL393

Peak	Size [bp]	Conc. [pg/μl]	Molarity [pmol/l]	Observations
1	35	125.00	5,411.3	Lower Marker
2	398	849.25	3,233.7	
3	1,223	328.98	407.6	
4	10,380	75.00	10.9	Upper Marker

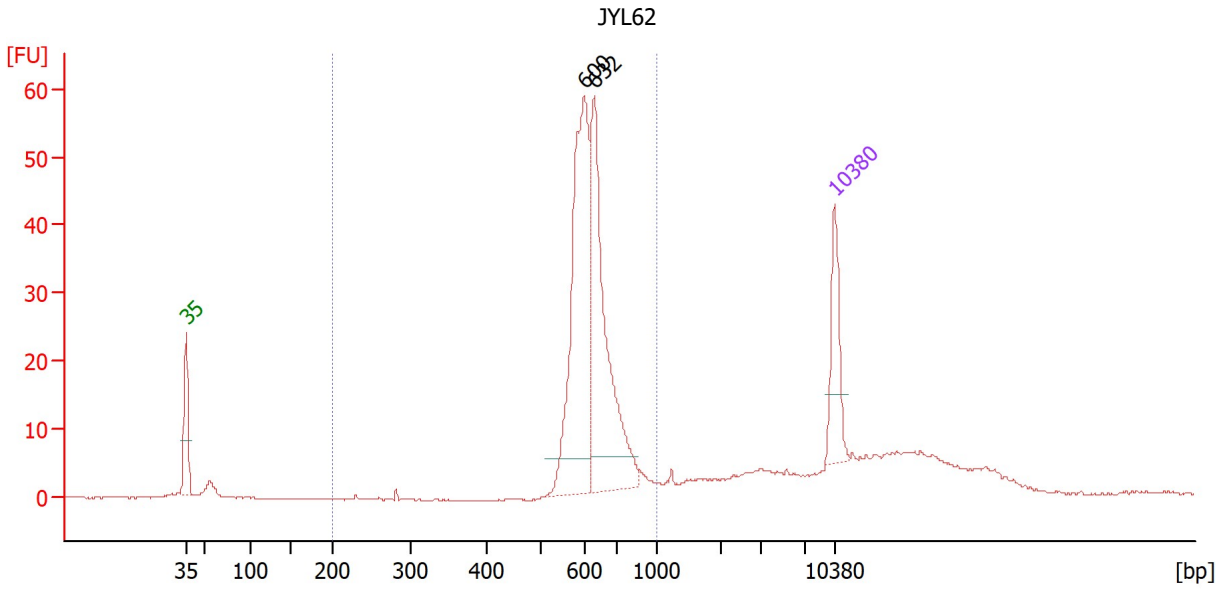
Region table for sample 1 : QDAL393

From [bp]	To [bp]	Corr. Area	% of Total	Average Size [bp]	Size distribution in CV [%]	Conc. [pg/μl]	Molarity [pmol/l]	Color
200	1,000	275.1	76	491	25.2	3,321.26	11,071.5	Blue

Assay Class: High Sensitivity DNA Assay
 Data Path: C:\...r1_High Sensitivity DNA Assay_DE34903152_2025-02-12_001.xad

Created: 2/12/2025 12:35:26 PM
 Modified: 2/12/2025 1:27:26 PM

Electropherogram Summary Continued ...



Overall Results for sample 2 : JYL62

Number of peaks found: 2 Corr. Area 1: 261.0
 Noise: 0.1

Peak table for sample 2 : JYL62

Peak	Size [bp]	Conc. [pg/μl]	Molarity [pmol/l]	Observations
1	35	125.00	5,411.3	Lower Marker
2	600	391.08	987.2	
3	632	344.48	826.3	
4	10,380	75.00	10.9	Upper Marker

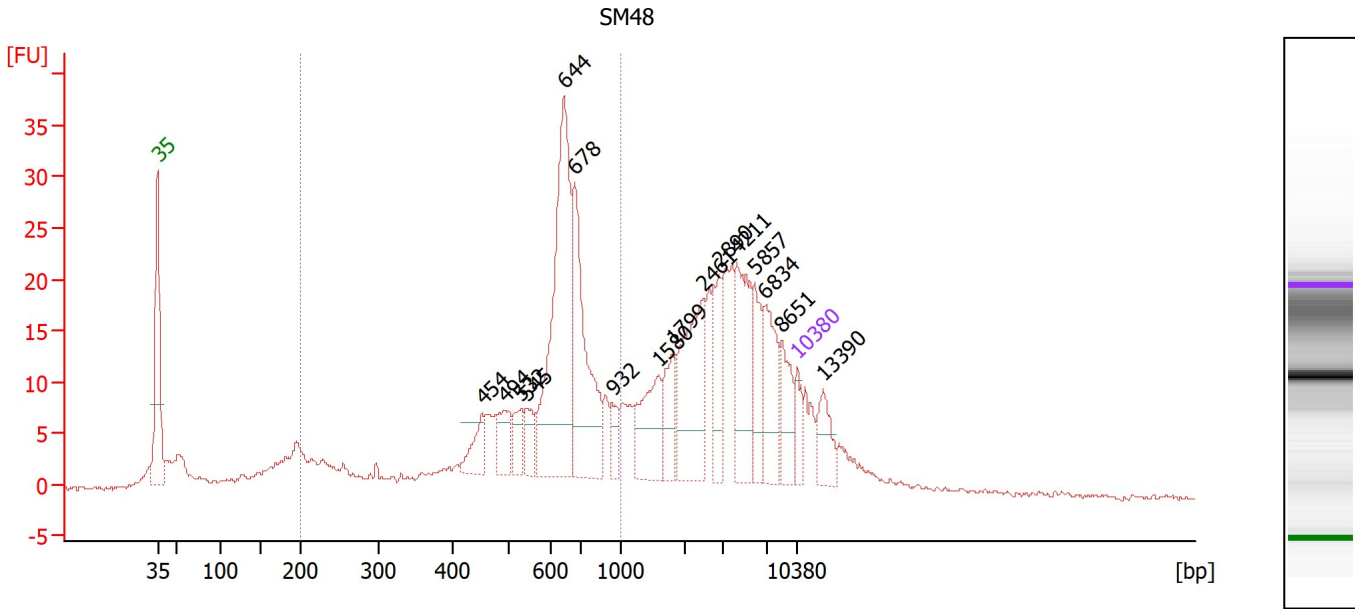
Region table for sample 2 : JYL62

From [bp]	To [bp]	Corr. Area	% of Total	Average Size [bp]	Size distribution in CV [%]	Conc. [pg/μl]	Molarity [pmol/l]	Color
200	1,000	261.0	68	632	11.0	773.07	1,873.7	Blue

Assay Class: High Sensitivity DNA Assay
 Data Path: C:\...r1_High Sensitivity DNA Assay_DE34903152_2025-02-12_001.xad

Created: 2/12/2025 12:35:26 PM
 Modified: 2/12/2025 1:27:26 PM

Electropherogram Summary Continued ...



Overall Results for sample 3 : SM48

Number of peaks found: 16 Corr. Area 1: 264.0
 Noise: 0.3

Peak table for sample 3 : SM48

Peak	Size [bp]	Conc. [pg/μl]	Molarity [pmol/l]	Observations
1	35	125.00	5,411.3	Lower Marker
2	454	132.18	441.6	
3	494	161.25	494.9	
4	532	106.01	302.0	
5	545	100.86	280.3	
6	644	1,060.16	2,494.3	
7	678	659.26	1,474.1	
8	932	66.43	108.0	
9	1,580	261.22	250.6	
10	1,799	155.74	131.2	
11	2,461	437.35	269.3	
12	2,890	186.04	97.5	
13	4,211	335.66	120.8	
14	5,857	181.08	46.8	
15	6,834	253.39	56.2	
16	8,651	159.73	28.0	
17	10,380	75.00	10.9	Upper Marker
18	13,390	0.00	0.0	

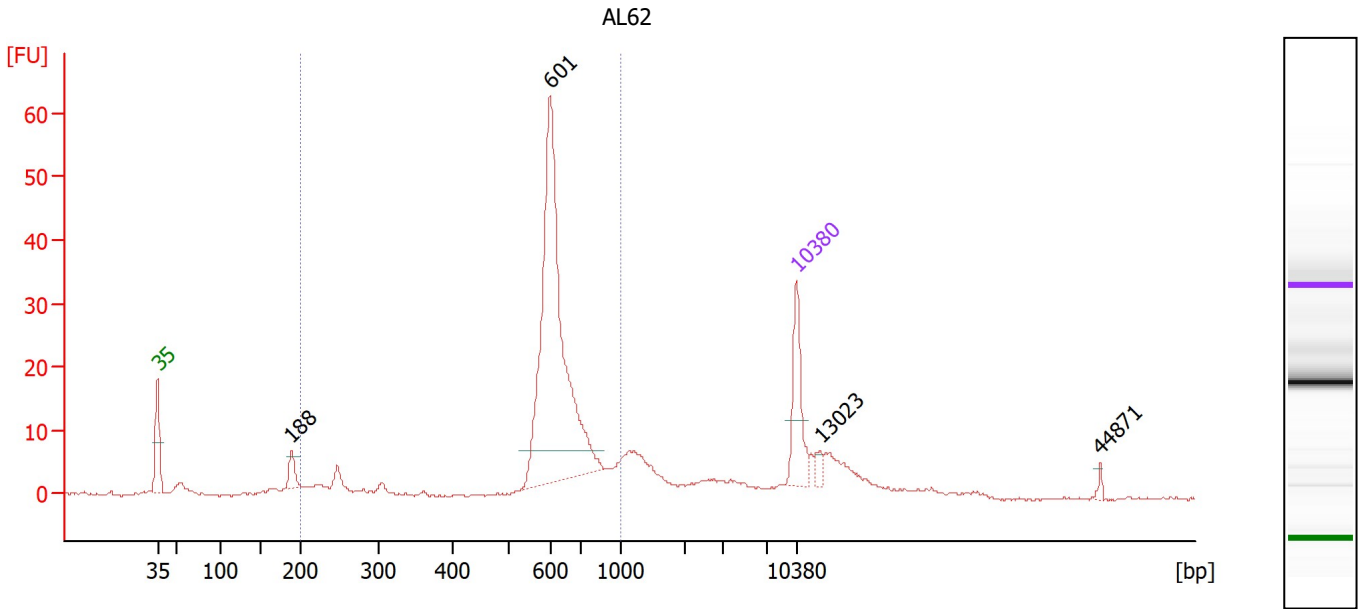
Region table for sample 3 : SM48

From [bp]	To [bp]	Corr. Area	% of Total	Average Size [bp]	Size distribution in CV [%]	Conc. [pg/μl]	Molarity [pmol/l]	Color
200	1,000	264.0	43	599	27.9	3,585.21	10,823.4	Blue

Assay Class: High Sensitivity DNA Assay
 Data Path: C:\...r1_High Sensitivity DNA Assay_DE34903152_2025-02-12_001.xad

Created: 2/12/2025 12:35:26 PM
 Modified: 2/12/2025 1:27:26 PM

Electropherogram Summary Continued ...



Overall Results for sample 4 : AL62

Number of peaks found: 4 Corr. Area 1: 222.9
 Noise: 0.2

Peak table for sample 4 : AL62

Peak	Size [bp]	Conc. [pg/μl]	Molarity [pmol/l]	Observations
1	35	125.00	5,411.3	Lower Marker
2	188	30.21	244.0	
3	601	549.42	1,385.1	
4	10,380	75.00	10.9	Upper Marker
5	13,023	0.00	0.0	
6	44,871	0.00	0.0	

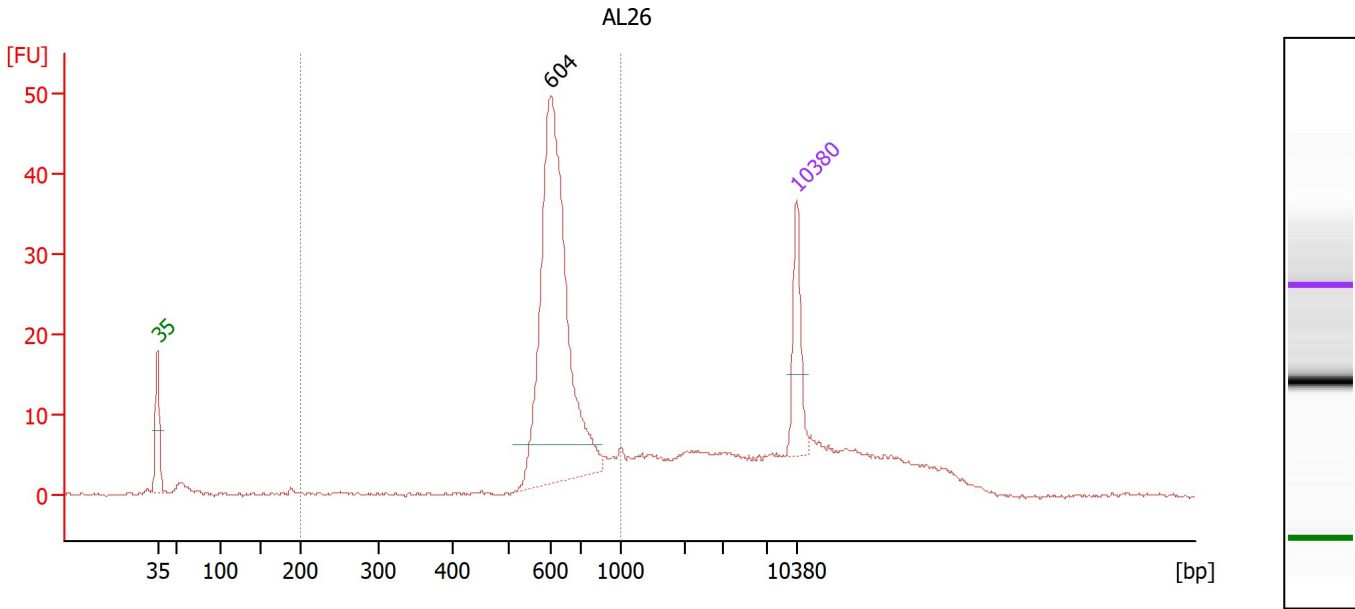
Region table for sample 4 : AL62

From [bp]	To [bp]	Corr. Area	% of Total	Average Size [bp]	Size distribution in CV [%]	Conc. [pg/μl]	Molarity [pmol/l]	Color
200	1,000	222.9	65	613	21.9	775.15	2,201.1	Blue

Assay Class: High Sensitivity DNA Assay
 Data Path: C:\...r1_High Sensitivity DNA Assay_DE34903152_2025-02-12_001.xad

Created: 2/12/2025 12:35:26 PM
 Modified: 2/12/2025 1:27:26 PM

Electropherogram Summary Continued ...



Overall Results for sample 5 : AL26

Number of peaks found: 1 Corr. Area 1: 200.1
 Noise: 0.2

Peak table for sample 5 : AL26

Peak	Size [bp]	Conc. [pg/μl]	Molarity [pmol/l]	Observations
1	35	125.00	5,411.3	Lower Marker
2	604	616.59	1,547.9	
3	10,380	75.00	10.9	Upper Marker

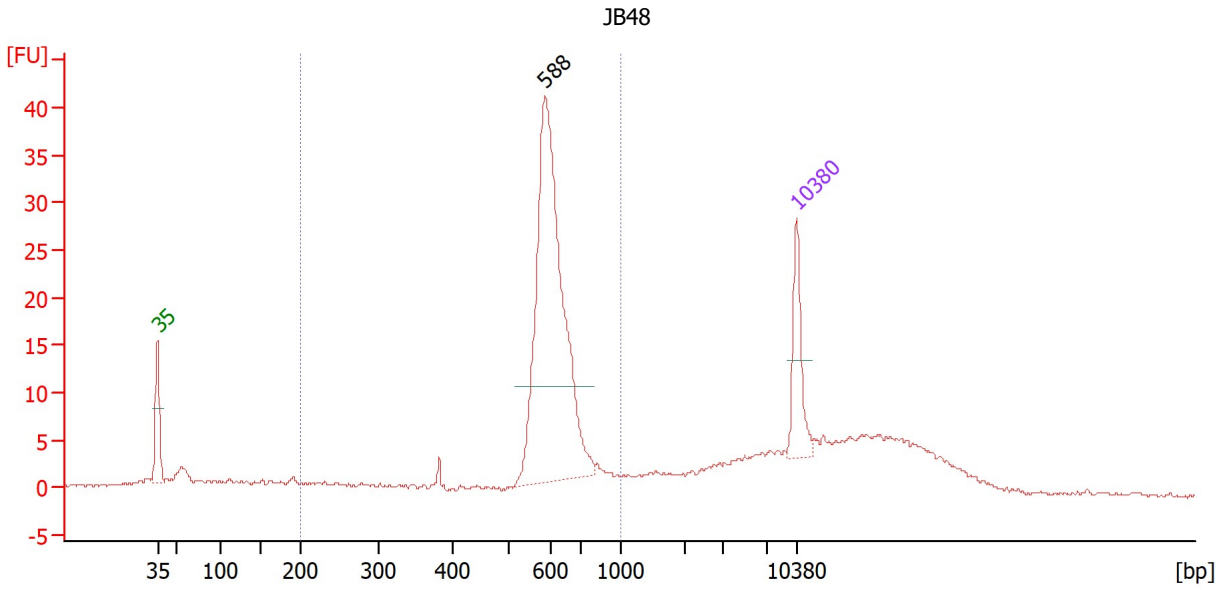
Region table for sample 5 : AL26

From [bp]	To [bp]	Corr. Area	% of Total	Average Size [bp]	Size distribution in CV [%]	Conc. [pg/μl]	Molarity [pmol/l]	Color
200	1,000	200.1	55	638	15.5	743.83	1,834.2	Blue

Assay Class: High Sensitivity DNA Assay
 Data Path: C:\...r1_High Sensitivity DNA Assay_DE34903152_2025-02-12_001.xad

Created: 2/12/2025 12:35:26 PM
 Modified: 2/12/2025 1:27:26 PM

Electropherogram Summary Continued ...



Setpoint Deviations for sample 6 : JB48

Height Threshold [FU] : 10

Overall Results for sample 6 : JB48

Number of peaks found: 1 Corr. Area 1: 168.4
 Noise: 0.2

Peak table for sample 6 : JB48

Peak	Size [bp]	Conc. [pg/μl]	Molarity [pmol/l]	Observations
1	35	125.00	5,411.3	Lower Marker
2	588	612.74	1,577.9	
3	10,380	75.00	10.9	Upper Marker

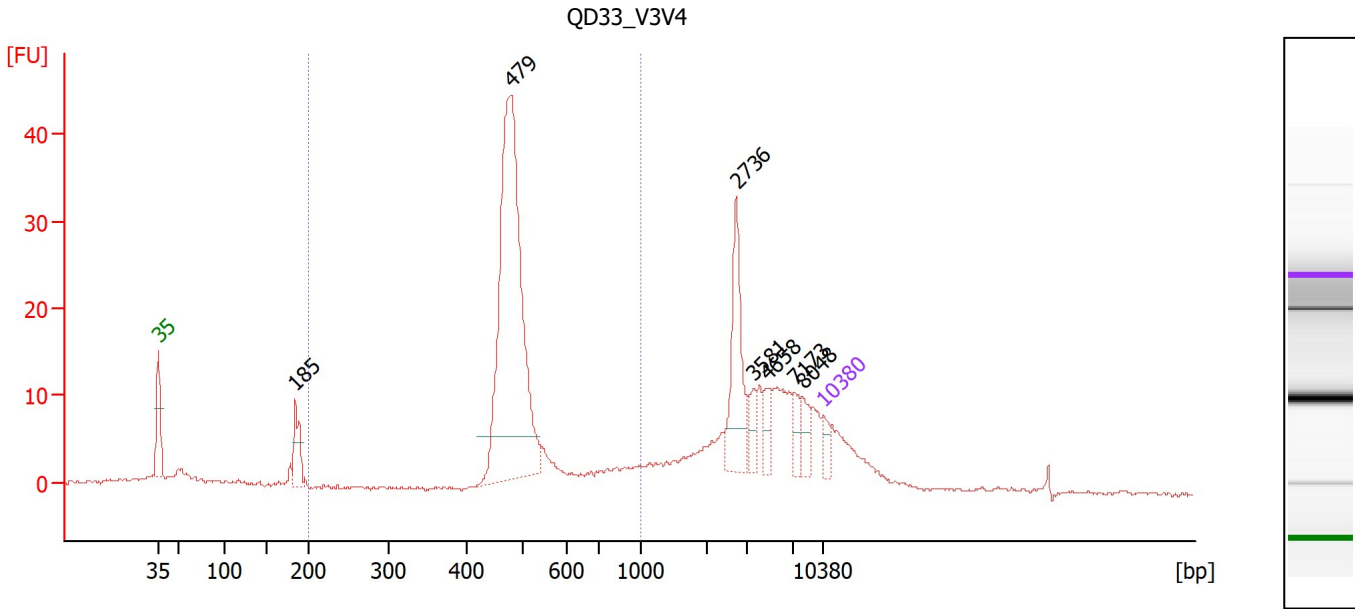
Region table for sample 6 : JB48

From [bp]	To [bp]	Corr. Area	% of Total	Average Size [bp]	Size distribution in CV [%]	Conc. [pg/μl]	Molarity [pmol/l]	Color
200	1,000	168.4	54	605	16.6	750.71	2,014.8	Blue

Assay Class: High Sensitivity DNA Assay
 Data Path: C:\...r1_High Sensitivity DNA Assay_DE34903152_2025-02-12_001.xad

Created: 2/12/2025 12:35:26 PM
 Modified: 2/12/2025 1:27:26 PM

Electropherogram Summary Continued ...



Overall Results for sample 7 : QD33_V3V4

Number of peaks found: 7 Corr. Area 1: 175.3
 Noise: 0.2

Peak table for sample 7 : QD33_V3V4

Peak	Size [bp]	Conc. [pg/μl]	Molarity [pmol/l]	Observations
1	35	125.00	5,411.3	Lower Marker
2	185	321.38	2,634.1	
3	479	3,052.40	9,656.6	
4	2,736	557.50	308.7	
5	3,581	100.99	42.7	
6	4,658	113.38	36.9	
7	7,173	113.48	24.0	
8	8,048	108.50	20.4	
9	10,380	75.00	10.9	Upper Marker

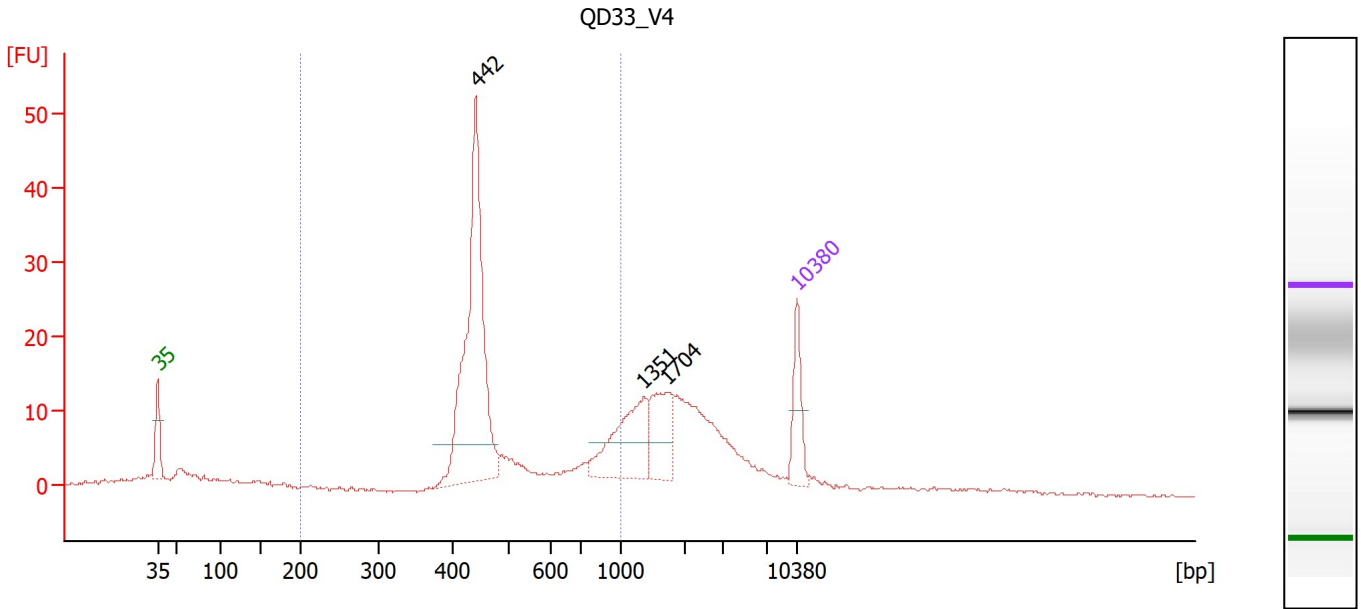
Region table for sample 7 : QD33_V3V4

From [bp]	To [bp]	Corr. Area	% of Total	Average Size [bp]	Size distribution in CV [%]	Conc. [pg/μl]	Molarity [pmol/l]	Color
200	1,000	175.3	45	518	19.8	3,685.01	11,147.5	Blue

Assay Class: High Sensitivity DNA Assay
 Data Path: C:\...r1_High Sensitivity DNA Assay_DE34903152_2025-02-12_001.xad

Created: 2/12/2025 12:35:26 PM
 Modified: 2/12/2025 1:27:26 PM

Electropherogram Summary Continued ...



Overall Results for sample 8 : QD33_V4

Number of peaks found: 3 Corr. Area 1: 175.9
 Noise: 0.2

Peak table for sample 8 : QD33_V4

Peak	Size [bp]	Conc. [pg/μl]	Molarity [pmol/l]	Observations
1	35	125.00	5,411.3	Lower Marker
2	442	597.26	2,049.4	
3	1,351	167.63	188.1	
4	1,704	109.64	97.5	
5	10,380	75.00	10.9	Upper Marker

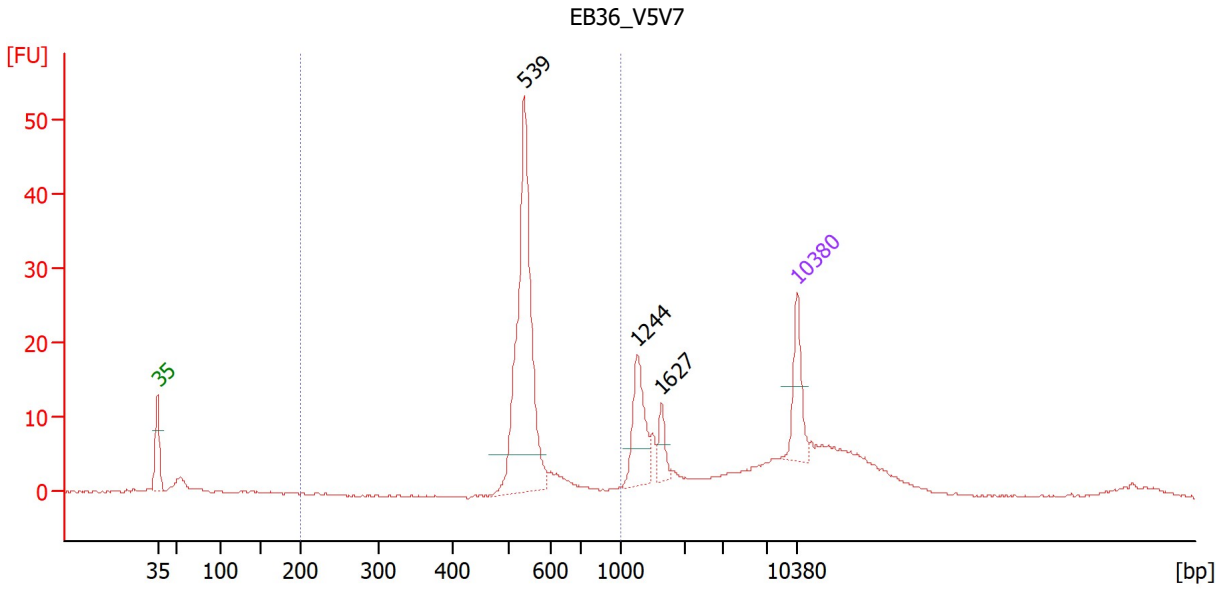
Region table for sample 8 : QD33_V4

From [bp]	To [bp]	Corr. Area	% of Total	Average Size [bp]	Size distribution in CV [%]	Conc. [pg/μl]	Molarity [pmol/l]	Color
200	1,000	175.9	49	526	30.8	869.20	2,730.1	Blue

Assay Class: High Sensitivity DNA Assay
 Data Path: C:\...r1_High Sensitivity DNA Assay_DE34903152_2025-02-12_001.xad

Created: 2/12/2025 12:35:26 PM
 Modified: 2/12/2025 1:27:26 PM

Electropherogram Summary Continued ...



Overall Results for sample 9 : EB36 V5V7

Number of peaks found: 3 Corr. Area 1: 112.3
 Noise: 0.1

Peak table for sample 9 : EB36 V5V7

Peak	Size [bp]	Conc. [pg/μl]	Molarity [pmol/l]	Observations
1	35	125.00	5,411.3	Lower Marker
2	539	500.99	1,407.7	
3	1,244	108.31	132.0	
4	1,627	33.48	31.2	
5	10,380	75.00	10.9	Upper Marker

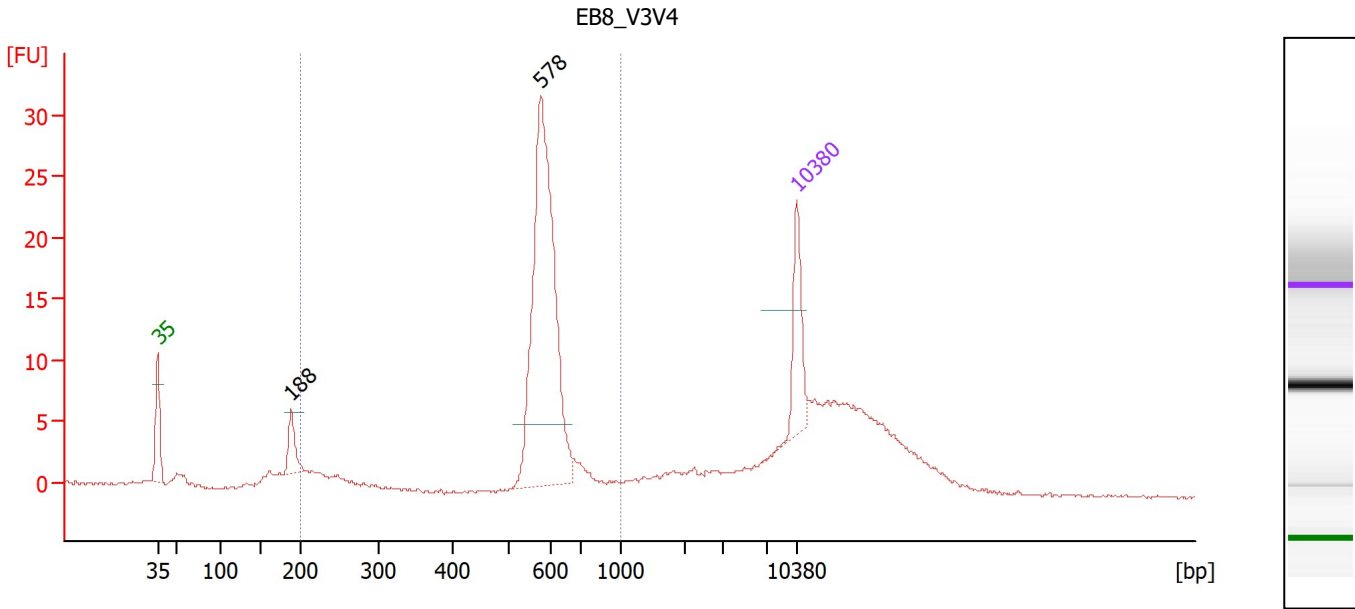
Region table for sample 9 : EB36 V5V7

From [bp]	To [bp]	Corr. Area	% of Total	Average Size [bp]	Size distribution in CV [%]	Conc. [pg/μl]	Molarity [pmol/l]	Color
200	1,000	112.3	42	558	12.5	576.32	1,589.0	Blue

Assay Class: High Sensitivity DNA Assay
 Data Path: C:\...r1_High Sensitivity DNA Assay_DE34903152_2025-02-12_001.xad

Created: 2/12/2025 12:35:26 PM
 Modified: 2/12/2025 1:27:26 PM

Electropherogram Summary Continued ...



Overall Results for sample 10 : EB8_V3V4

Number of peaks found: 2 Corr. Area 1: 105.2
 Noise: 0.1

Peak table for sample 10 : EB8_V3V4

Peak	Size [bp]	Conc. [pg/μl]	Molarity [pmol/l]	Observations
1	35	125.00	5,411.3	Lower Marker
2	188	50.97	411.7	
3	578	532.35	1,395.9	
4	10,380	75.00	10.9	Upper Marker

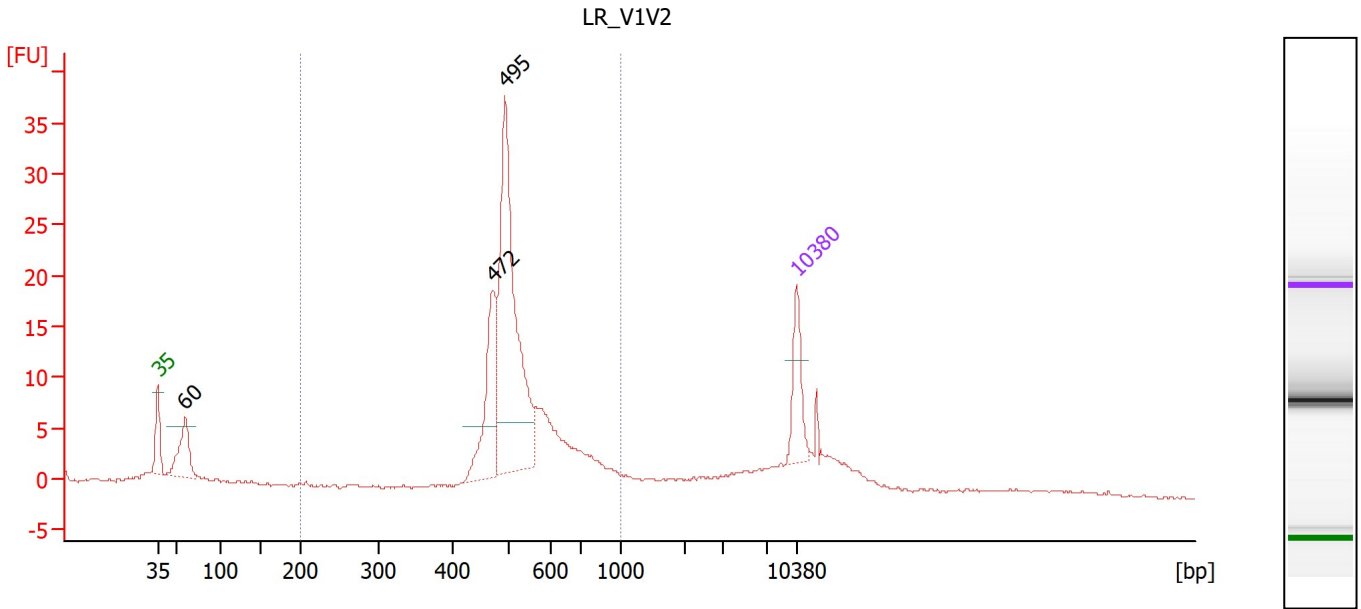
Region table for sample 10 : EB8_V3V4

From [bp]	To [bp]	Corr. Area	% of Total	Average Size [bp]	Size distribution in CV [%]	Conc. [pg/μl]	Molarity [pmol/l]	Color
200	1,000	105.2	51	581	17.4	631.78	1,837.8	Blue

Assay Class: High Sensitivity DNA Assay
 Data Path: C:\...r1_High Sensitivity DNA Assay_DE34903152_2025-02-12_001.xad

Created: 2/12/2025 12:35:26 PM
 Modified: 2/12/2025 1:27:26 PM

Electropherogram Summary Continued ...



Overall Results for sample 11 : LR_V1V2

Number of peaks found: 3 Corr. Area 1: 152.9
 Noise: 0.1

Peak table for sample 11 : LR_V1V2

Peak	Size [bp]	Conc. [pg/μl]	Molarity [pmol/l]	Observations
1	35	125.00	5,411.3	Lower Marker
2	60	135.33	3,412.5	
3	472	200.74	644.7	
4	495	558.97	1,711.3	
5	10,380	75.00	10.9	Upper Marker

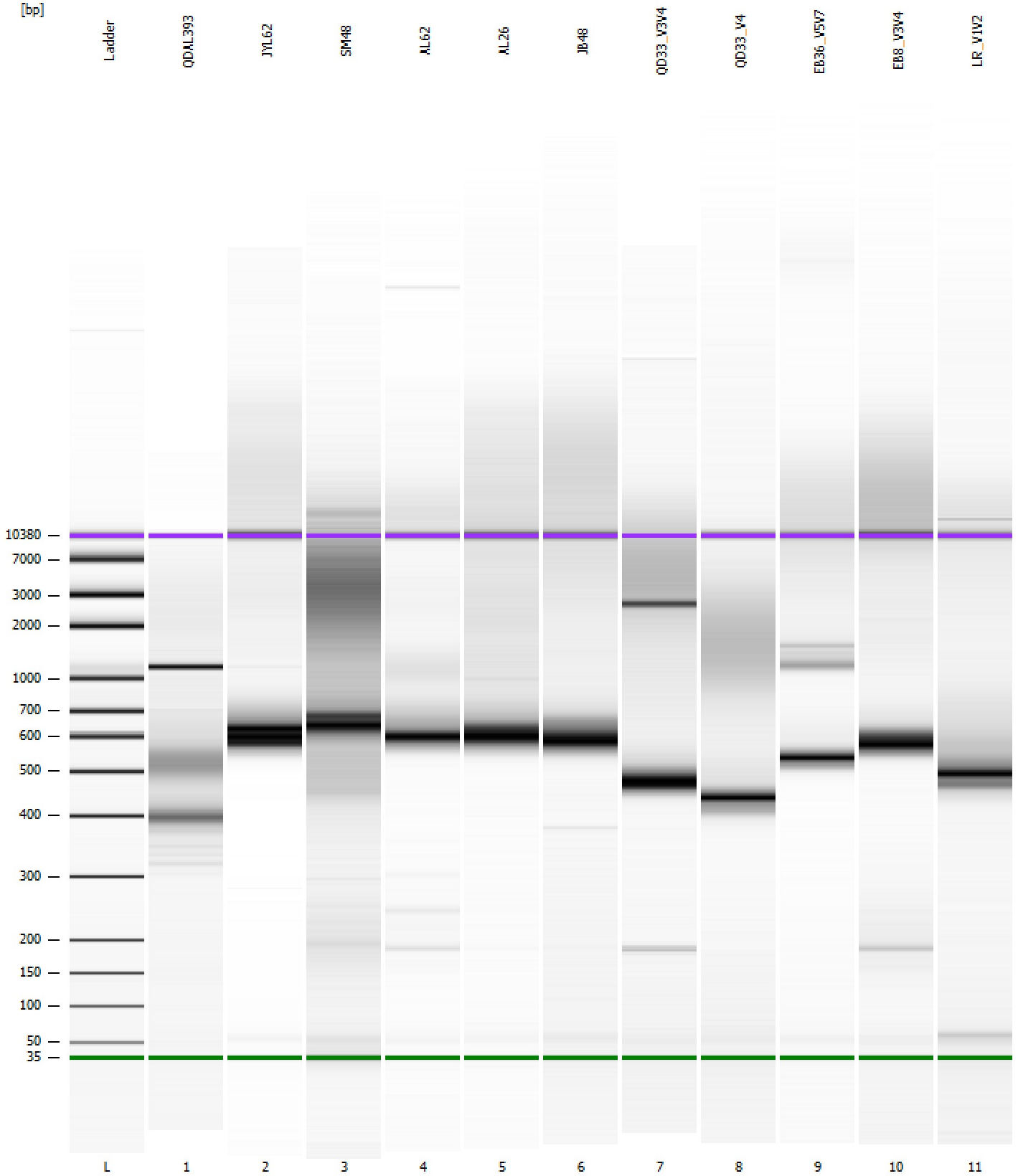
Region table for sample 11 : LR_V1V2

From [bp]	To [bp]	Corr. Area	% of Total	Average Size [bp]	Size distribution in CV [%]	Conc. [pg/μl]	Molarity [pmol/l]	Color
200	1,000	152.9	72	543	17.7	1,065.43	3,064.4	Blue

Assay Class: High Sensitivity DNA Assay
Data Path: C:\...r1_High Sensitivity DNA Assay_DE34903152_2025-02-12_001.xad

Created: 2/12/2025 12:35:26 PM
Modified: 2/12/2025 1:27:26 PM

Gel Image



Assay Class: High Sensitivity DNA Assay
 Data Path: C:\...r1_High Sensitivity DNA Assay_DE34903152_2025-02-12_001.xad

Created: 2/12/2025 12:35:26 PM
 Modified: 2/12/2025 1:27:26 PM

Run Logbook

Description	Number	Source	Category	Sub Category	Time	Time Zone	User	Host
Run ended on port 1 (Number of wells acquired: 12)		Instrument	Run		2/12/2025 1:16:51 PM	(GMT --08:00) Pacific Standard Time	sbsuser	DESKTOP-4UNV VOB
Run started on port 1 (File: C:\Program Files (x86)\Agilent\2100 bioanalyzer\2100 expert\data\2025-02-12\Bioanalyzer1_High Sensitivity DNA Assay_DE34903152_2025-02-12_001.xad)		Instrument	Run		2/12/2025 12:35:36 PM	(GMT --08:00) Pacific Standard Time	sbsuser	DESKTOP-4UNV VOB
Product Number : G2938C		Instrument	Run		2/12/2025 12:35:36 PM	(GMT --08:00) Pacific Standard Time	sbsuser	DESKTOP-4UNV VOB
Name :		Instrument	Run		2/12/2025 12:35:36 PM	(GMT --08:00) Pacific Standard Time	sbsuser	DESKTOP-4UNV VOB
Vendor : Agilent Technologies		Instrument	Run		2/12/2025 12:35:36 PM	(GMT --08:00) Pacific Standard Time	sbsuser	DESKTOP-4UNV VOB
Serial# : DE34903152		Instrument	Run		2/12/2025 12:35:36 PM	(GMT --08:00) Pacific Standard Time	sbsuser	DESKTOP-4UNV VOB
Firmware : C.01.069		Instrument	Run		2/12/2025 12:35:36 PM	(GMT --08:00) Pacific Standard Time	sbsuser	DESKTOP-4UNV VOB
Cartridge : Electrode		Instrument	Run		2/12/2025 12:35:36 PM	(GMT --08:00) Pacific Standard Time	sbsuser	DESKTOP-4UNV VOB