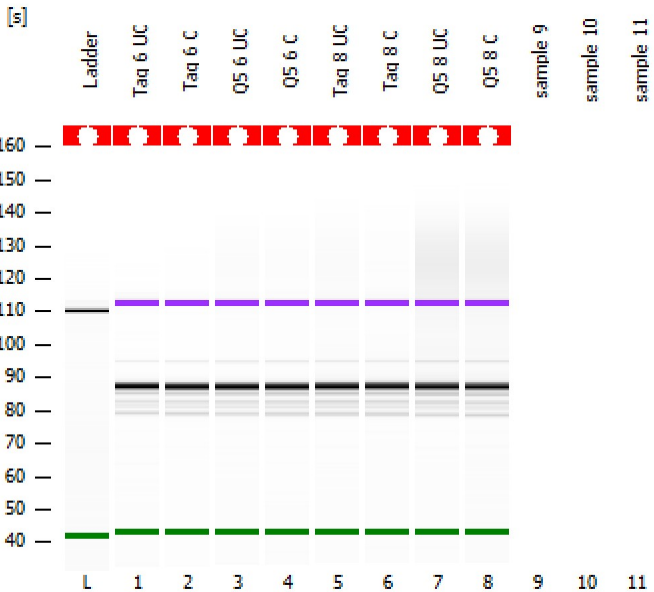


Assay Class: High Sensitivity DNA Assay  
 Data Path: C:\...r1\_High Sensitivity DNA Assay\_DE34903152\_2025-02-13\_001.xad

Created: 2/13/2025 12:20:52 PM  
 Modified: 2/13/2025 12:53:42 PM

**Electrophoresis File Run Summary**



Instrument Information:

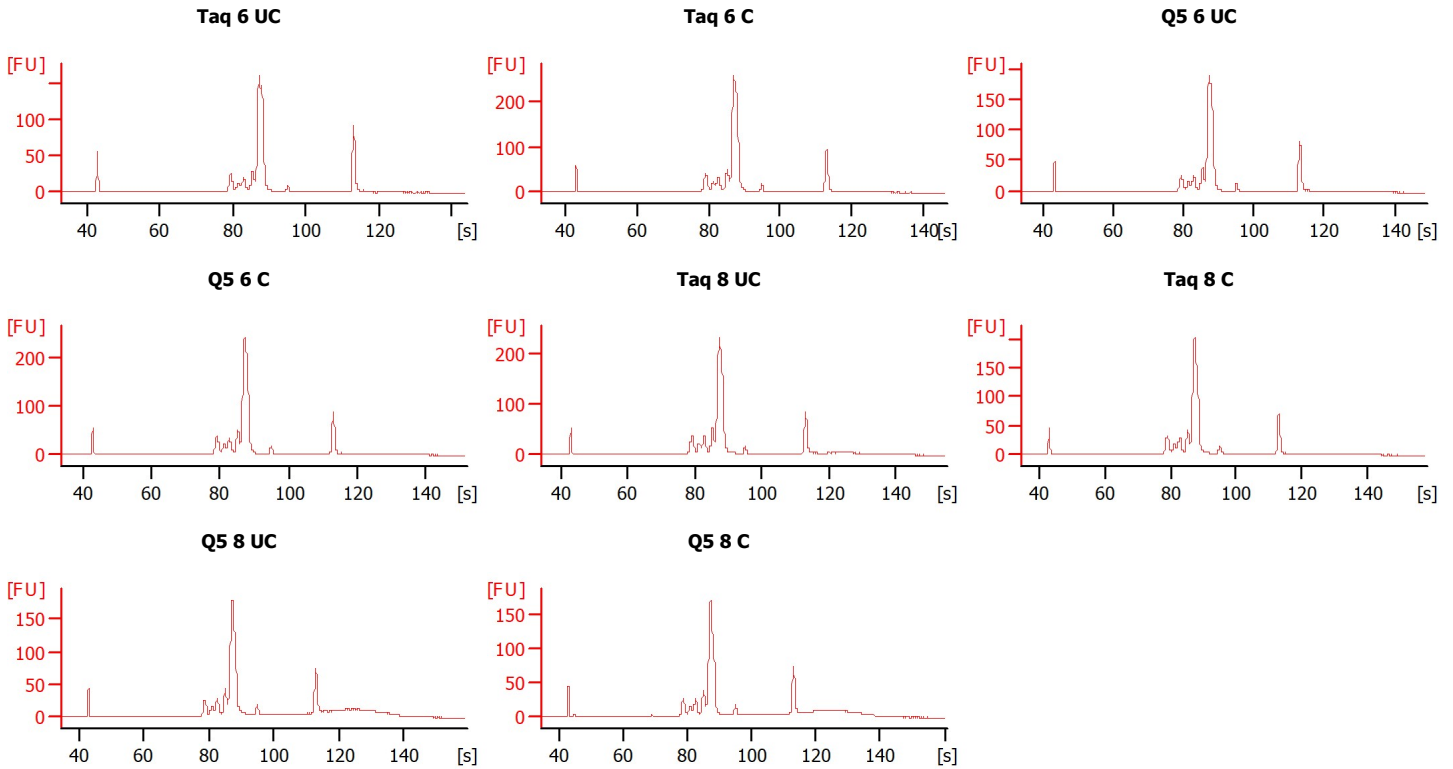
Instrument Name: DE34903152      Firmware: C.01.069  
 Serial#: DE34903152      Type: G2938C

Assay Information:

Assay Origin Path: C:\Program Files (x86)\Agilent\2100 bioanalyzer\2100 expert\assays\dsDNA\High Sensitivity DNA.xsy  
 Assay Class: High Sensitivity DNA Assay  
 Version: 1.03  
 Assay Comments: Copyright © 2003-2010 Agilent Technologies

Chip Information:

Chip Lot #:  
 Reagent Kit Lot #:  
 Chip Comments:



Assay Class: High Sensitivity DNA Assay  
 Data Path: C:\...r1\_High Sensitivity DNA Assay\_DE34903152\_2025-02-13\_001.xad

Created: 2/13/2025 12:20:52 PM  
 Modified: 2/13/2025 12:53:42 PM

**Electrophoresis File Run Summary (Chip Summary)**

Sample Name	Sample Comment	Rest. Digest	Status	Observation	Result Label	Result Color
Taq 6 UC		<input type="checkbox"/>	✓			
Taq 6 C		<input type="checkbox"/>	✓			
Q5 6 UC		<input type="checkbox"/>	✓			
Q5 6 C		<input type="checkbox"/>	✓			
Taq 8 UC		<input type="checkbox"/>	✓			
Taq 8 C		<input type="checkbox"/>	✓			
Q5 8 UC		<input type="checkbox"/>	✓			
Q5 8 C		<input type="checkbox"/>	✓			
sample 9		<input type="checkbox"/>				
sample 10		<input type="checkbox"/>				
sample 11		<input type="checkbox"/>				
Ladder		<input type="checkbox"/>	✓			

**Chip Lot #**

**Reagent Kit Lot #**

**Chip Comments :**

Assay Class: High Sensitivity DNA Assay  
Data Path: C:\...r1\_High Sensitivity DNA Assay\_DE34903152\_2025-02-13\_001.xad

Created: 2/13/2025 12:20:52 PM  
Modified: 2/13/2025 12:53:42 PM

**Electrophoresis Assay Details**

**General Analysis Settings**

Number of Available Sample and Ladder Wells (Max.) : 12  
Minimum Visible Range [s] : 32  
Maximum Visible Range [s] : 138  
Start Analysis Time Range [s] : 33  
End Analysis Time Range [s] : 137.5  
Ladder Concentration [pg/μl] : 1950  
Uses Standard Area for Ladder Fragments  
Lower Marker Concentration [pg/μl] : 125  
Upper Marker Concentration [pg/μl] : 75  
Used Upper Marker for Quantitation  
Standard Curve Fit is Point to Point  
Show Data Aligned to Lower and Upper Marker

**Integrator Settings**

Integration Start Time [s] : 33.05  
Integration End Time [s] : 137  
Slope Threshold : 0.8  
Height Threshold [FU] : 5  
Area Threshold : 0.1  
Width Threshold [s] : 0.6  
Baseline Plateau [s] : 0.5

**Filter Settings**

Filter Width [s] : 0.5  
Polynomial Order : 4

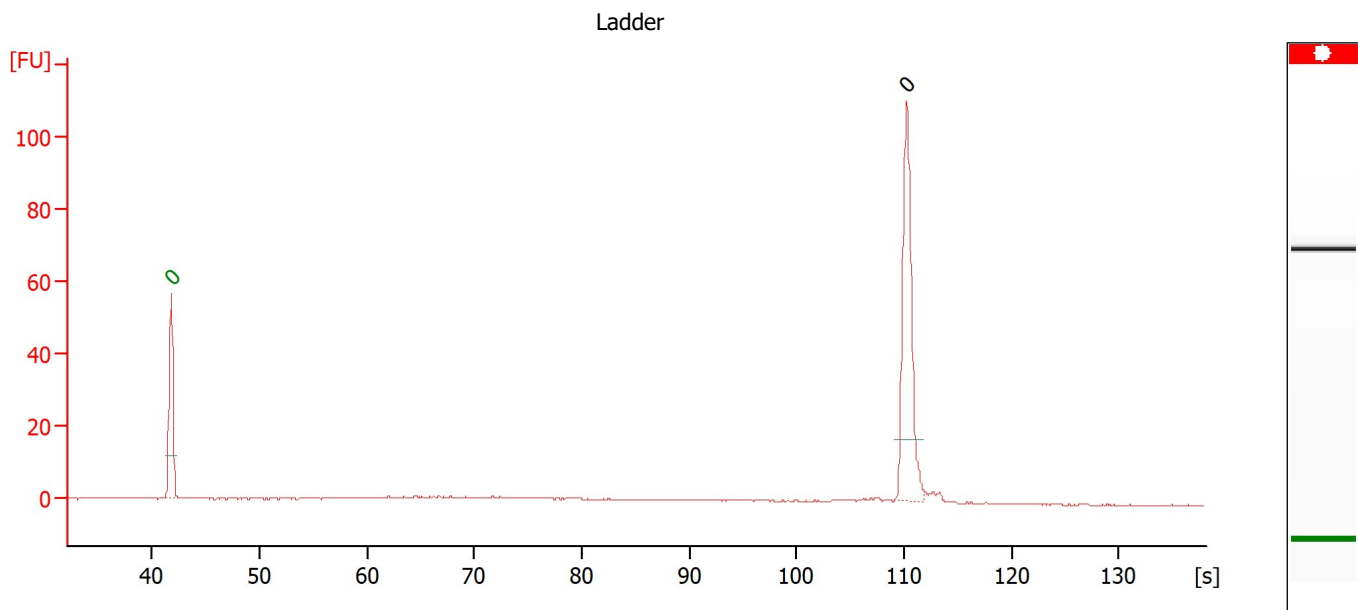
**Ladder**

Ladder Peak	Size	Area
1	35	160
2	50	210
3	100	208
4	150	221
5	200	242
6	300	270
7	400	305
8	500	306
9	600	336
10	700	321
11	1000	366
12	2000	413
13	3000	411
14	7000	400
15	10380	214

Assay Class: High Sensitivity DNA Assay  
 Data Path: C:\...r1\_High Sensitivity DNA Assay\_DE34903152\_2025-02-13\_001.xad

Created: 2/13/2025 12:20:52 PM  
 Modified: 2/13/2025 12:53:42 PM

**Electropherogram Summary**



**Overall Results for Ladder**

Noise: 0.1

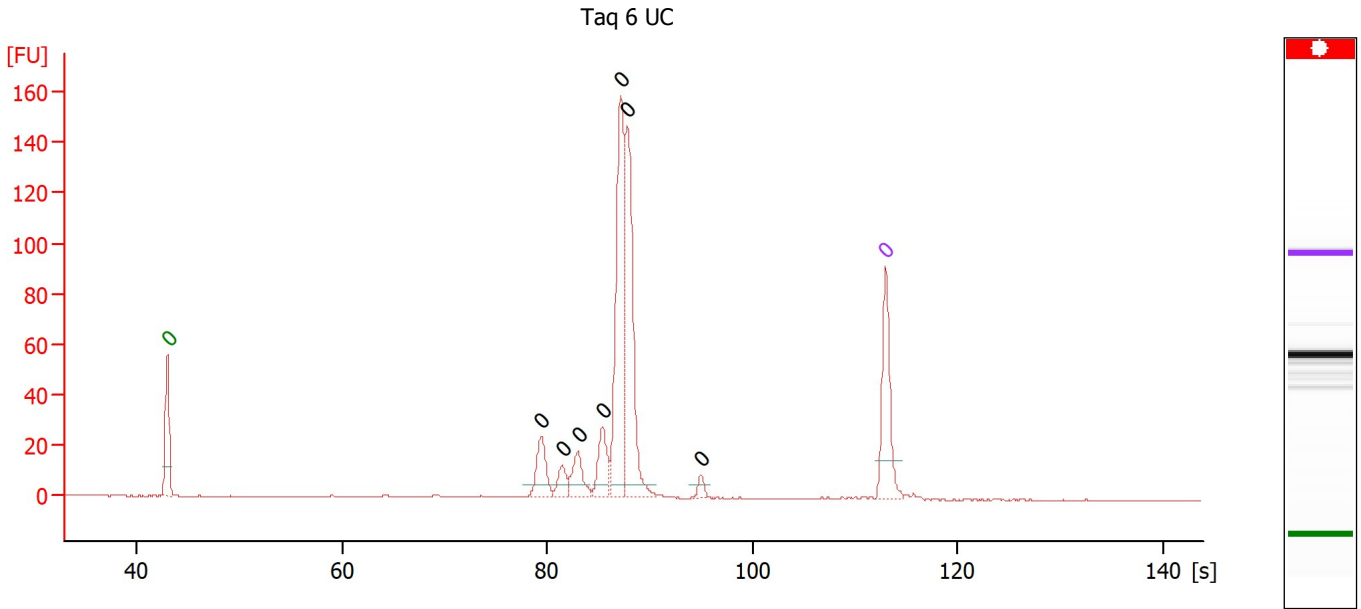
**Peak table for Ladder**

Peak	Size [bp]	Conc. [pg/μl]	Molarity [pmol/l]	Observations
1	0	0.00	0.0	Lower Marker
2	0	0.00	0.0	Ladder Peak

Assay Class: High Sensitivity DNA Assay  
 Data Path: C:\...r1\_High Sensitivity DNA Assay\_DE34903152\_2025-02-13\_001.xad

Created: 2/13/2025 12:20:52 PM  
 Modified: 2/13/2025 12:53:42 PM

**Electropherogram Summary Continued ...**



**Overall Results for sample 1 : Taq 6 UC**

Number of peaks found: 7                      Noise: 0.2

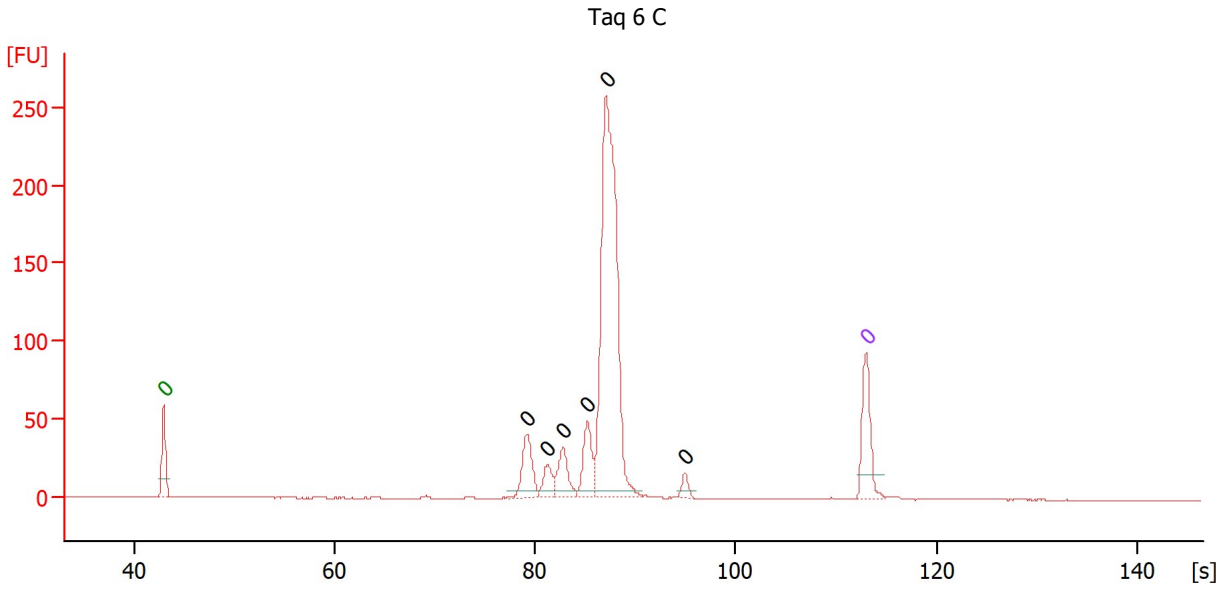
**Peak table for sample 1 : Taq 6 UC**

Peak	Size [bp]	Conc. [pg/μl]	Molarity [pmol/l]	Observations
1	0	0.00	0.0	Lower Marker
2	0	0.00	0.0	
3	0	0.00	0.0	
4	0	0.00	0.0	
5	0	0.00	0.0	
6	0	0.00	0.0	
7	0	0.00	0.0	
8	0	0.00	0.0	
9	0	0.00	0.0	Upper Marker

Assay Class: High Sensitivity DNA Assay  
 Data Path: C:\...r1\_High Sensitivity DNA Assay\_DE34903152\_2025-02-13\_001.xad

Created: 2/13/2025 12:20:52 PM  
 Modified: 2/13/2025 12:53:42 PM

**Electropherogram Summary Continued ...**



**Overall Results for sample 2 : Tag 6 C**

Number of peaks found: 6                      Noise: 0.2

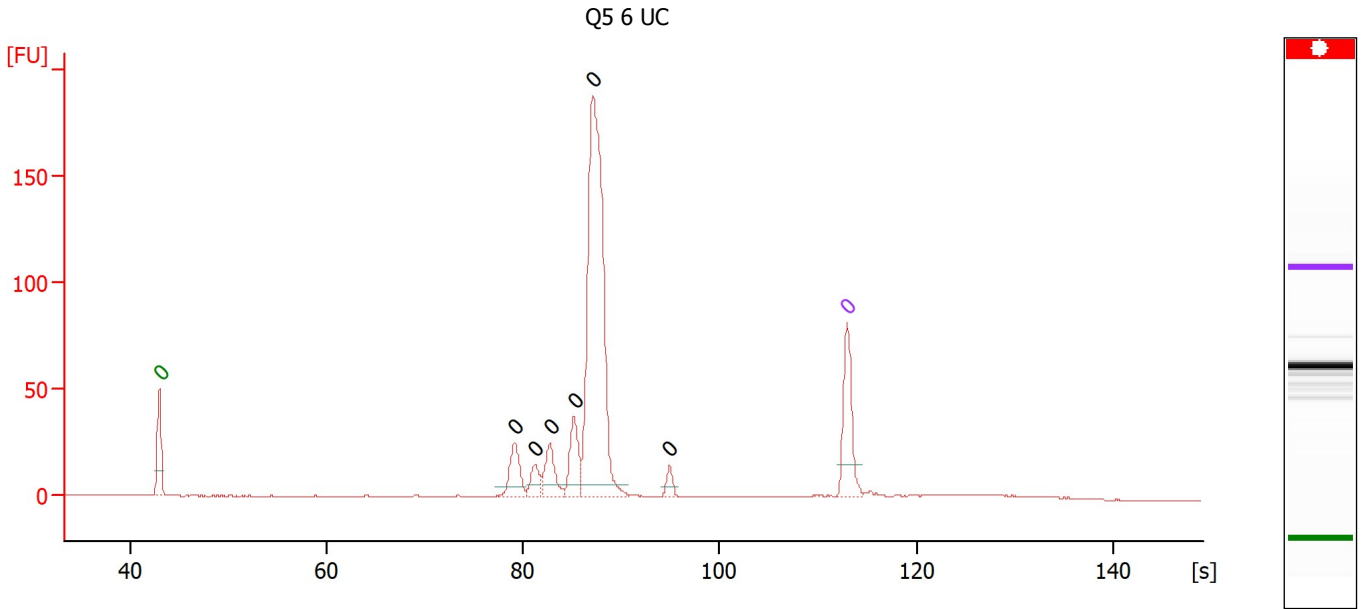
**Peak table for sample 2 : Tag 6 C**

Peak	Size [bp]	Conc. [pg/μl]	Molarity [pmol/l]	Observations
1	0	0.00	0.0	Lower Marker
2	0	0.00	0.0	
3	0	0.00	0.0	
4	0	0.00	0.0	
5	0	0.00	0.0	
6	0	0.00	0.0	
7	0	0.00	0.0	
8	0	0.00	0.0	Upper Marker

Assay Class: High Sensitivity DNA Assay  
 Data Path: C:\...r1\_High Sensitivity DNA Assay\_DE34903152\_2025-02-13\_001.xad

Created: 2/13/2025 12:20:52 PM  
 Modified: 2/13/2025 12:53:42 PM

**Electropherogram Summary Continued ...**



**Overall Results for sample 3 : Q5 6 UC**

Number of peaks found: 6      Noise: 0.2

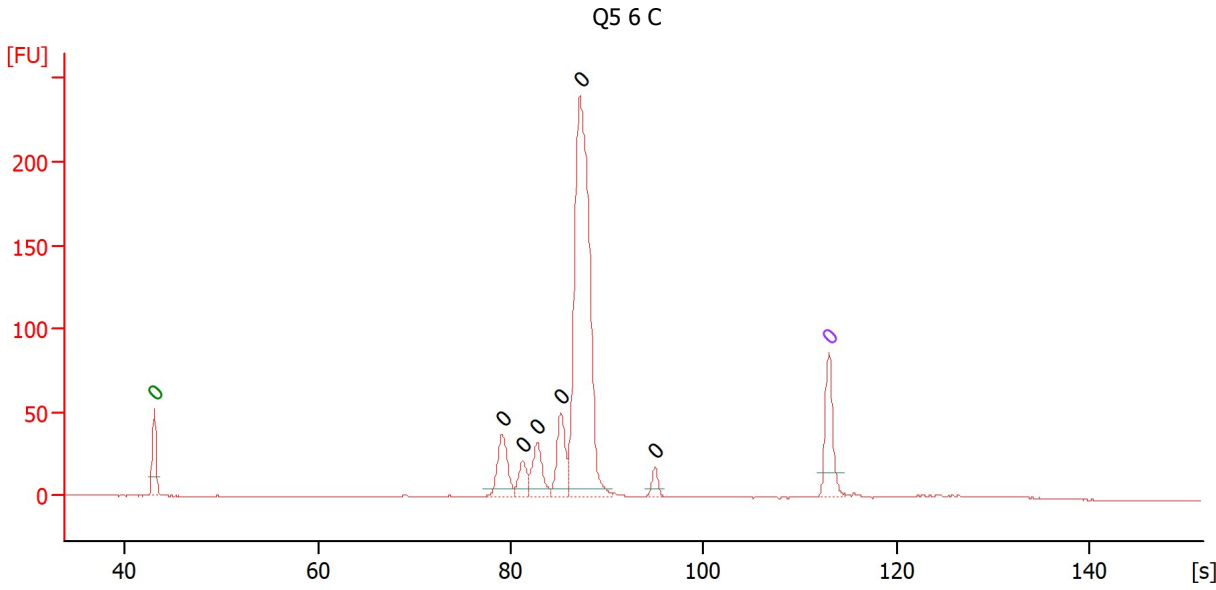
**Peak table for sample 3 : Q5 6 UC**

Peak	Size [bp]	Conc. [pg/μl]	Molarity [pmol/l]	Observations
1	0	0.00	0.0	Lower Marker
2	0	0.00	0.0	
3	0	0.00	0.0	
4	0	0.00	0.0	
5	0	0.00	0.0	
6	0	0.00	0.0	
7	0	0.00	0.0	
8	0	0.00	0.0	Upper Marker

Assay Class: High Sensitivity DNA Assay  
 Data Path: C:\...r1\_High Sensitivity DNA Assay\_DE34903152\_2025-02-13\_001.xad

Created: 2/13/2025 12:20:52 PM  
 Modified: 2/13/2025 12:53:42 PM

**Electropherogram Summary Continued ...**



**Overall Results for sample 4 : Q5 6 C**

Number of peaks found: 6      Noise: 0.1

**Peak table for sample 4 : Q5 6 C**

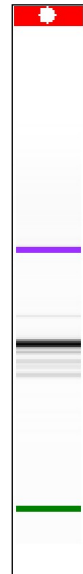
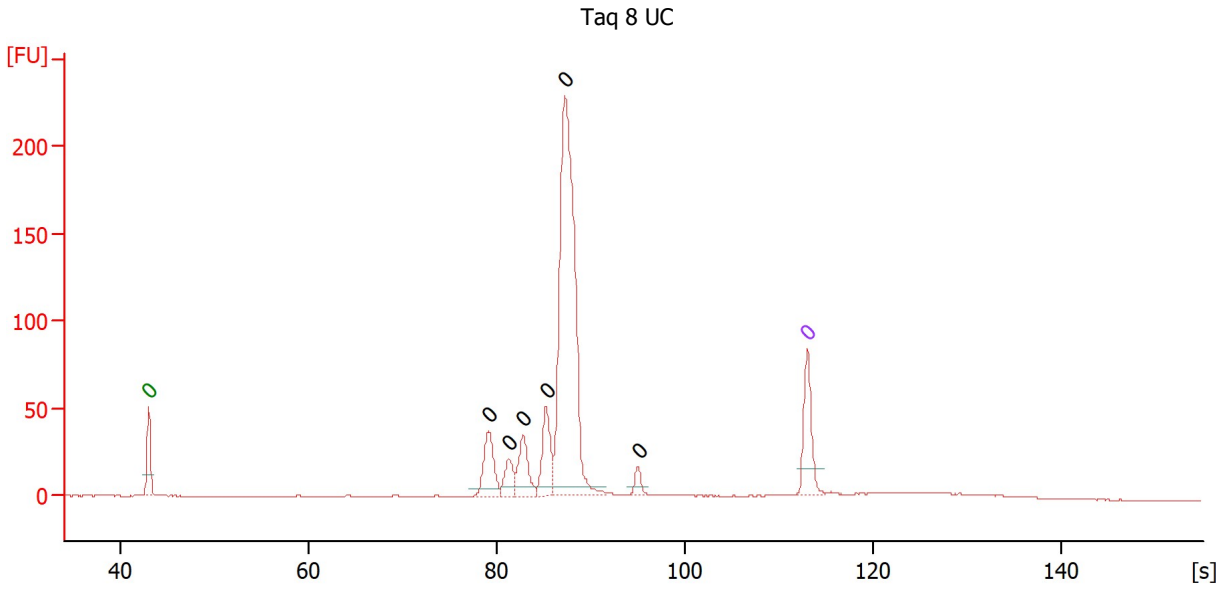
Peak	Size [bp]	Conc. [pg/μl]	Molarity [pmol/l]	Observations
1	0	0.00	0.0	Lower Marker
2	0	0.00	0.0	
3	0	0.00	0.0	
4	0	0.00	0.0	
5	0	0.00	0.0	
6	0	0.00	0.0	
7	0	0.00	0.0	
8	0	0.00	0.0	Upper Marker



Assay Class: High Sensitivity DNA Assay  
 Data Path: C:\...r1\_High Sensitivity DNA Assay\_DE34903152\_2025-02-13\_001.xad

Created: 2/13/2025 12:20:52 PM  
 Modified: 2/13/2025 12:53:42 PM

**Electropherogram Summary Continued ...**



**Overall Results for sample 5 : Taq 8 UC**

Number of peaks found: 6                      Noise: 0.2

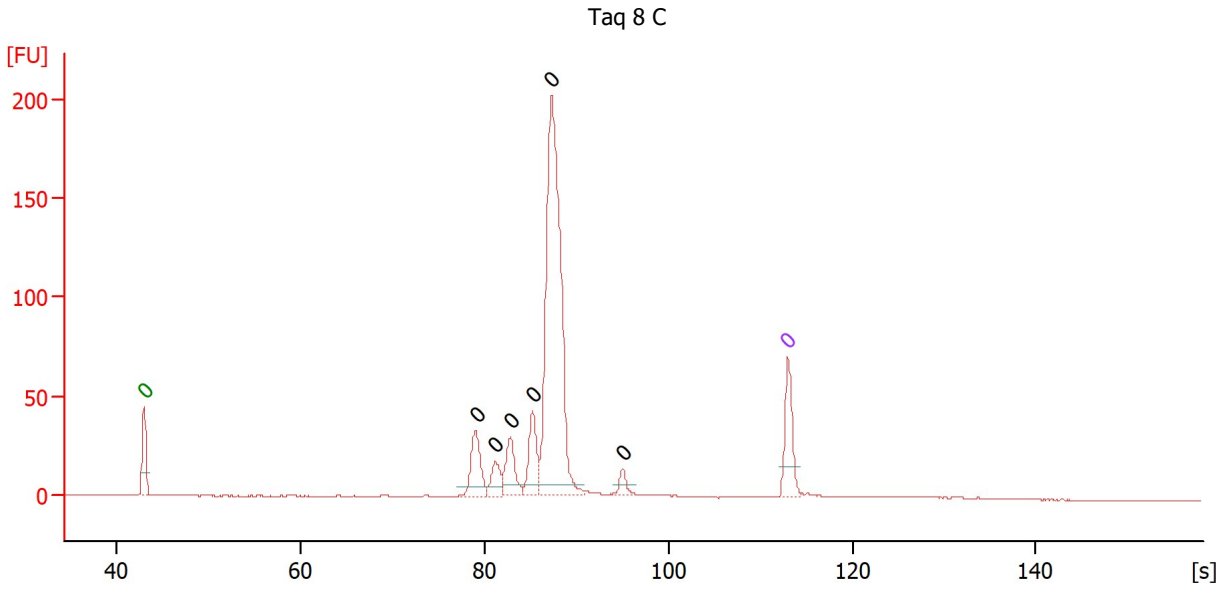
**Peak table for sample 5 : Taq 8 UC**

Peak	Size [bp]	Conc. [pg/μl]	Molarity [pmol/l]	Observations
1	0	0.00	0.0	Lower Marker
2	0	0.00	0.0	
3	0	0.00	0.0	
4	0	0.00	0.0	
5	0	0.00	0.0	
6	0	0.00	0.0	
7	0	0.00	0.0	
8	0	0.00	0.0	Upper Marker

Assay Class: High Sensitivity DNA Assay  
 Data Path: C:\...r1\_High Sensitivity DNA Assay\_DE34903152\_2025-02-13\_001.xad

Created: 2/13/2025 12:20:52 PM  
 Modified: 2/13/2025 12:53:42 PM

**Electropherogram Summary Continued ...**



**Overall Results for sample 6 : Taq 8 C**

Number of peaks found: 6      Noise: 0.2

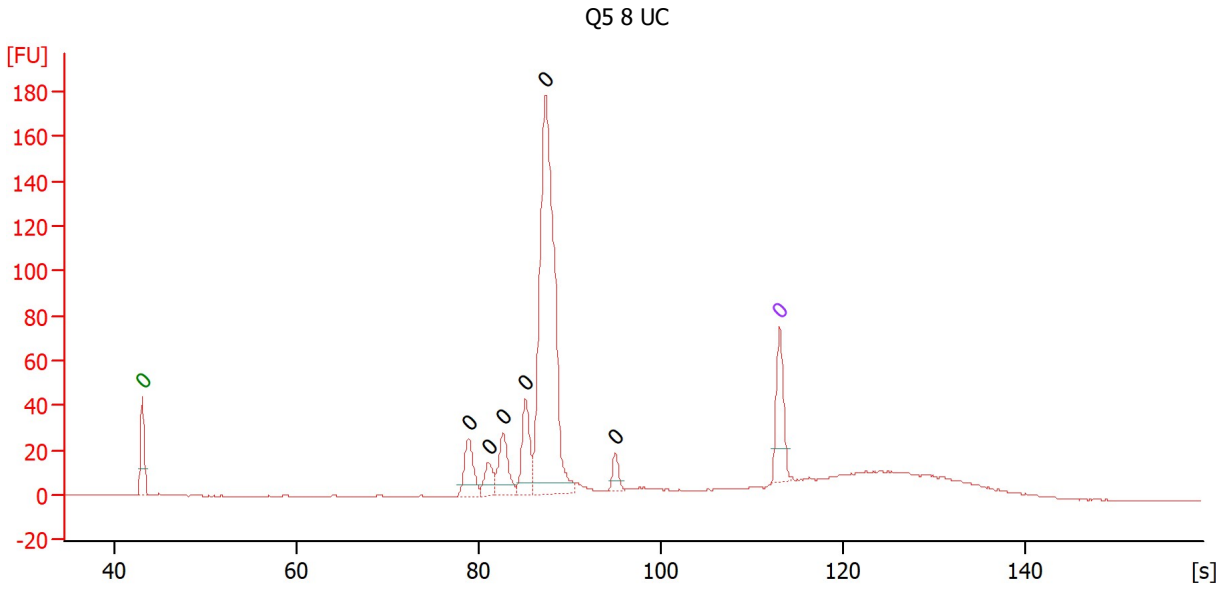
**Peak table for sample 6 : Taq 8 C**

Peak	Size [bp]	Conc. [pg/μl]	Molarity [pmol/l]	Observations
1	0	0.00	0.0	Lower Marker
2	0	0.00	0.0	
3	0	0.00	0.0	
4	0	0.00	0.0	
5	0	0.00	0.0	
6	0	0.00	0.0	
7	0	0.00	0.0	
8	0	0.00	0.0	Upper Marker

Assay Class: High Sensitivity DNA Assay  
 Data Path: C:\...r1\_High Sensitivity DNA Assay\_DE34903152\_2025-02-13\_001.xad

Created: 2/13/2025 12:20:52 PM  
 Modified: 2/13/2025 12:53:42 PM

**Electropherogram Summary Continued ...**



**Overall Results for sample 7 : Q5 8 UC**

Number of peaks found: 6                      Noise: 0.1

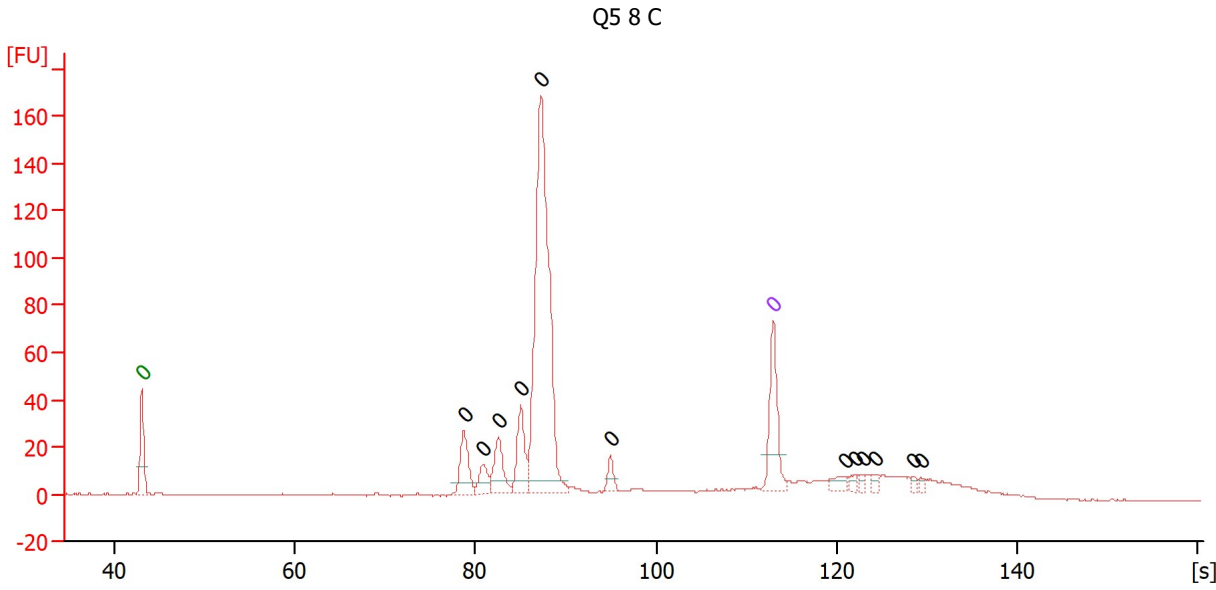
**Peak table for sample 7 : Q5 8 UC**

Peak	Size [bp]	Conc. [pg/μl]	Molarity [pmol/l]	Observations
1	0	0.00	0.0	Lower Marker
2	0	0.00	0.0	
3	0	0.00	0.0	
4	0	0.00	0.0	
5	0	0.00	0.0	
6	0	0.00	0.0	
7	0	0.00	0.0	
8	0	0.00	0.0	Upper Marker

Assay Class: High Sensitivity DNA Assay  
 Data Path: C:\...r1\_High Sensitivity DNA Assay\_DE34903152\_2025-02-13\_001.xad

Created: 2/13/2025 12:20:52 PM  
 Modified: 2/13/2025 12:53:42 PM

**Electropherogram Summary Continued ...**



**Overall Results for sample 8 : Q5 8 C**

Number of peaks found: 12                      Noise: 0.2

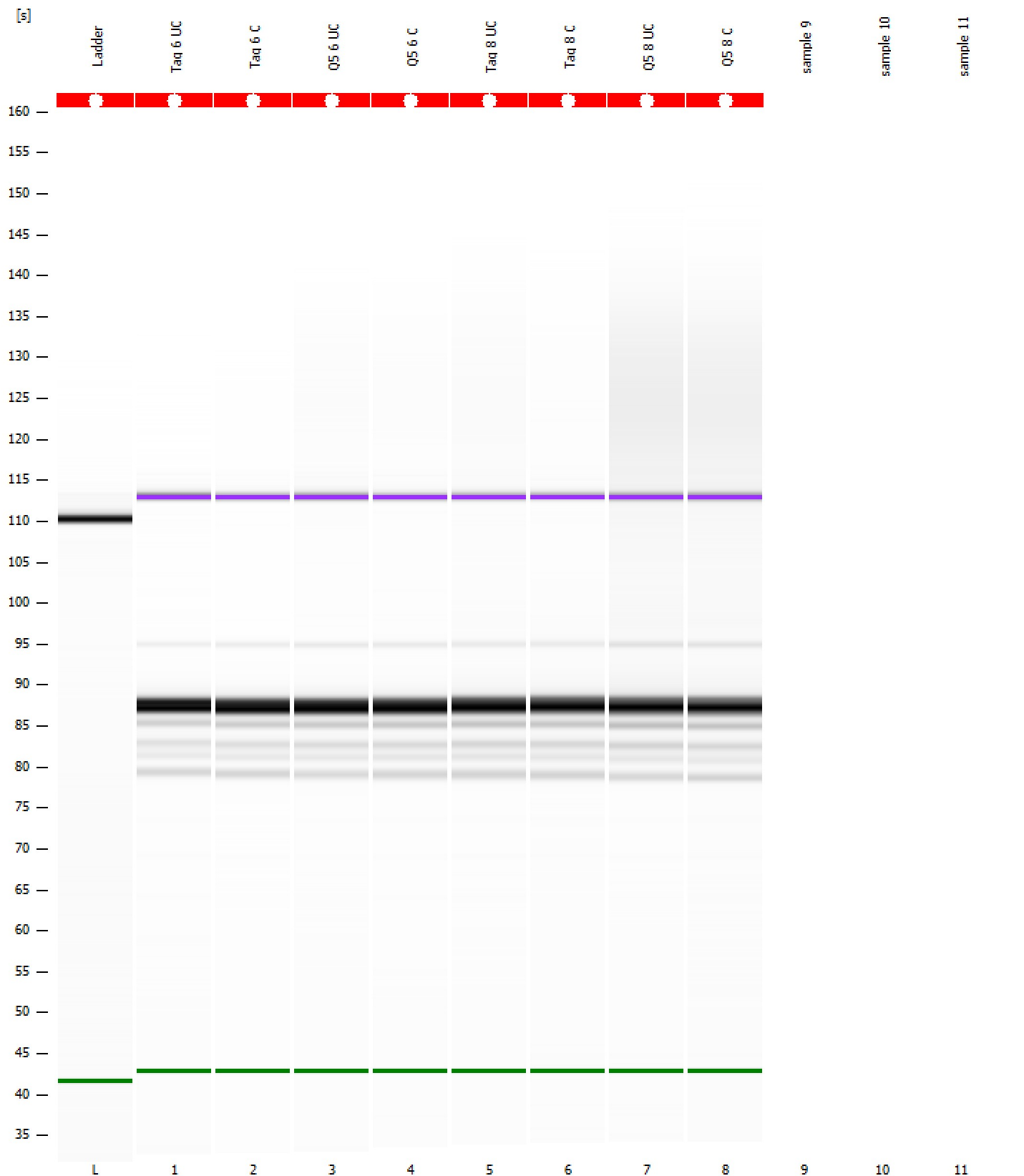
**Peak table for sample 8 : Q5 8 C**

Peak	Size [bp]	Conc. [pg/μl]	Molarity [pmol/l]	Observations
1	0	0.00	0.0	Lower Marker
2	0	0.00	0.0	
3	0	0.00	0.0	
4	0	0.00	0.0	
5	0	0.00	0.0	
6	0	0.00	0.0	
7	0	0.00	0.0	
8	0	0.00	0.0	Upper Marker
9	0	0.00	0.0	
10	0	0.00	0.0	
11	0	0.00	0.0	
12	0	0.00	0.0	
13	0	0.00	0.0	
14	0	0.00	0.0	

Assay Class: High Sensitivity DNA Assay  
Data Path: C:\...r1\_High Sensitivity DNA Assay\_DE34903152\_2025-02-13\_001.xad

Created: 2/13/2025 12:20:52 PM  
Modified: 2/13/2025 12:53:42 PM

Gel Image



Assay Class: High Sensitivity DNA Assay  
Data Path: C:\...r1\_High Sensitivity DNA Assay\_DE34903152\_2025-02-13\_001.xad

Created: 2/13/2025 12:20:52 PM  
Modified: 2/13/2025 12:53:42 PM

**Invalid Samples**

Sample 9 has not been run, no results available.

Sample 10 has not been run, no results available.

Sample 11 has not been run, no results available.

Assay Class: High Sensitivity DNA Assay  
 Data Path: C:\...r1\_High Sensitivity DNA Assay\_DE34903152\_2025-02-13\_001.xad

Created: 2/13/2025 12:20:52 PM  
 Modified: 2/13/2025 12:53:42 PM

**Run Logbook**

Description	Number	Source	Category	Sub Category	Time	Time Zone	User	Host
Run ended on port 1 (Number of wells acquired: 9)		Instrument	Run		2/13/2025 12:53:39 PM	(GMT --08:00) Pacific Standard Time	sbsuser	DESKTOP-4UNV VOB
Run started on port 1 (File: C:\Program Files (x86)\Agilent\2100 bioanalyzer\2100 expert\data\2025-02-13\Bioanalyzer1_High Sensitivity DNA Assay_DE34903152_2025-02-13_001.xad)		Instrument	Run		2/13/2025 12:20:59 PM	(GMT --08:00) Pacific Standard Time	sbsuser	DESKTOP-4UNV VOB
Product Number : G2938C		Instrument	Run		2/13/2025 12:20:59 PM	(GMT --08:00) Pacific Standard Time	sbsuser	DESKTOP-4UNV VOB
Name :		Instrument	Run		2/13/2025 12:20:59 PM	(GMT --08:00) Pacific Standard Time	sbsuser	DESKTOP-4UNV VOB
Vendor : Agilent Technologies		Instrument	Run		2/13/2025 12:20:59 PM	(GMT --08:00) Pacific Standard Time	sbsuser	DESKTOP-4UNV VOB
Serial# : DE34903152		Instrument	Run		2/13/2025 12:20:59 PM	(GMT --08:00) Pacific Standard Time	sbsuser	DESKTOP-4UNV VOB
Firmware : C.01.069		Instrument	Run		2/13/2025 12:20:59 PM	(GMT --08:00) Pacific Standard Time	sbsuser	DESKTOP-4UNV VOB
Cartridge : Electrode		Instrument	Run		2/13/2025 12:20:59 PM	(GMT --08:00) Pacific Standard Time	sbsuser	DESKTOP-4UNV VOB