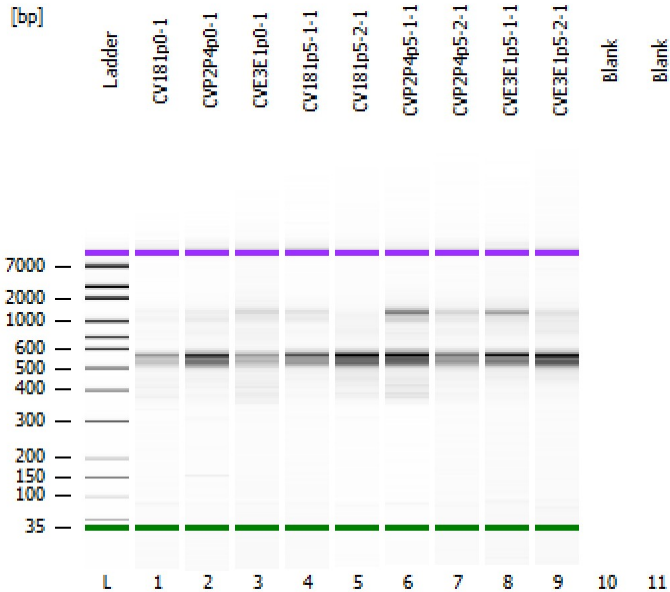


Assay Class: High Sensitivity DNA Assay
Data Path: Z:\...\Bioanalyzer1_High Sensitivity DNA Assay_2019-12-12_003.xad

Created: 12/12/2019 10:08:55 AM
Modified: 12/12/2019 10:44:40 AM

Electrophoresis File Run Summary



Instrument Information:

Instrument Name: DE34903152 Firmware: C.01.069
Serial#: DE34903152 Type: G2938C

Assay Information:

Assay Origin Path: C:\Program Files (x86)\Agilent\2100 bioanalyzer\2100 expert\assays\dsDNA\High Sensitivity DNA.xsy
Assay Class: High Sensitivity DNA Assay
Version: 1.03
Assay Comments: Copyright © 2003-2010 Agilent Technologies

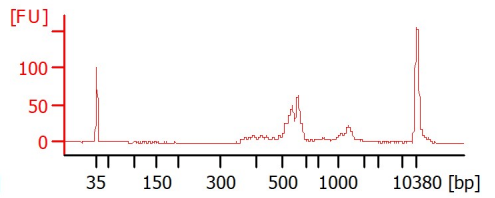
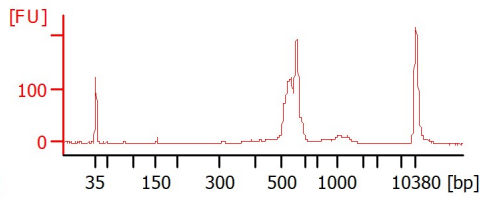
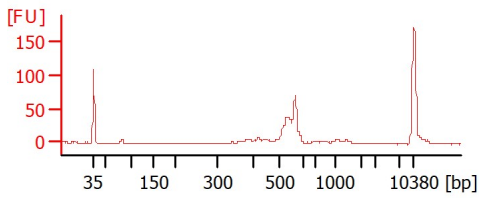
Chip Information:

Chip Lot #: Reagent Kit Lot #: Chip Comments:

CV181p0-1

CVP2P4p0-1

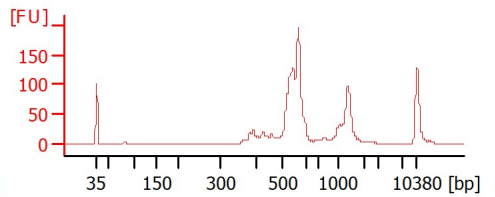
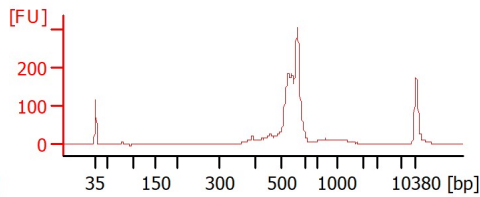
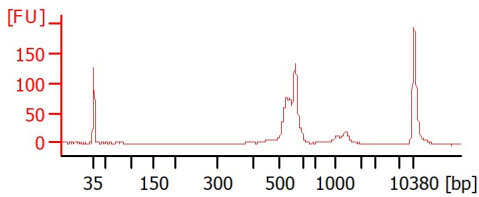
CVE3E1p0-1



CV181p5-1-1

CV181p5-2-1

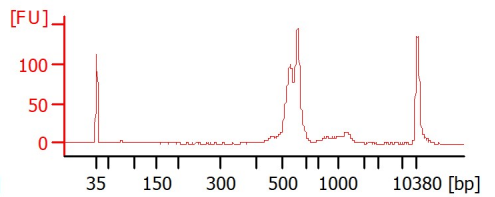
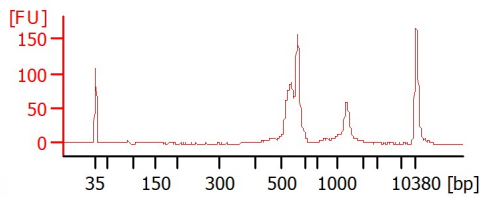
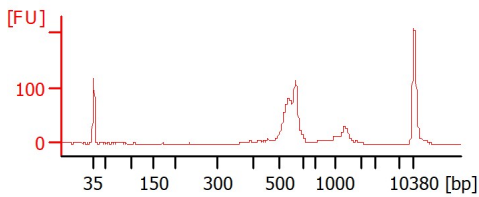
CVP2P4p5-1-1



CVP2P4p5-2-1

CVE3E1p5-1-1

CVE3E1p5-2-1



Assay Class: High Sensitivity DNA Assay
 Data Path: Z:\...\Bioanalyzer1_High Sensitivity DNA Assay_2019-12-12_003.xad

Created: 12/12/2019 10:08:55 AM
 Modified: 12/12/2019 10:44:40 AM

Electrophoresis File Run Summary (Chip Summary)

Sample Name	Sample Comment	Rest. Digest	Status	Observation	Result Label	Result Color
CV181p0-1		<input type="checkbox"/>	✓			
CVP2P4p0-1		<input type="checkbox"/>	✓			
CVE3E1p0-1		<input type="checkbox"/>	✓			
CV181p5-1-1		<input type="checkbox"/>	✓			
CV181p5-2-1		<input type="checkbox"/>	✓			
CVP2P4p5-1-1		<input type="checkbox"/>	✓			
CVP2P4p5-2-1		<input type="checkbox"/>	✓			
CVE3E1p5-1-1		<input type="checkbox"/>	✓			
CVE3E1p5-2-1		<input type="checkbox"/>	✓			
Blank		<input type="checkbox"/>				
Blank		<input type="checkbox"/>				
Ladder		<input type="checkbox"/>	✓			

Chip Lot #

Reagent Kit Lot #

Chip Comments :

Assay Class: High Sensitivity DNA Assay
 Data Path: Z:\...\Bioanalyzer1_High Sensitivity DNA Assay_2019-12-12_003.xad

Created: 12/12/2019 10:08:55 AM
 Modified: 12/12/2019 10:44:40 AM

Electrophoresis Assay Details

General Analysis Settings

Number of Available Sample and Ladder Wells (Max.) : 12
 Minimum Visible Range [s] : 32
 Maximum Visible Range [s] : 138
 Start Analysis Time Range [s] : 33
 End Analysis Time Range [s] : 137.5
 Ladder Concentration [pg/μl] : 1950
 Uses Standard Area for Ladder Fragments
 Lower Marker Concentration [pg/μl] : 125
 Upper Marker Concentration [pg/μl] : 75
 Used Upper Marker for Quantitation
 Standard Curve Fit is Point to Point
 Show Data Aligned to Lower and Upper Marker

Integrator Settings

Integration Start Time [s] : 33.05
 Integration End Time [s] : 137
 Slope Threshold : 0.8
 Height Threshold [FU] : 5
 Area Threshold : 0.1
 Width Threshold [s] : 0.6
 Baseline Plateau [s] : 0.5

Filter Settings

Filter Width [s] : 0.5
 Polynomial Order : 4

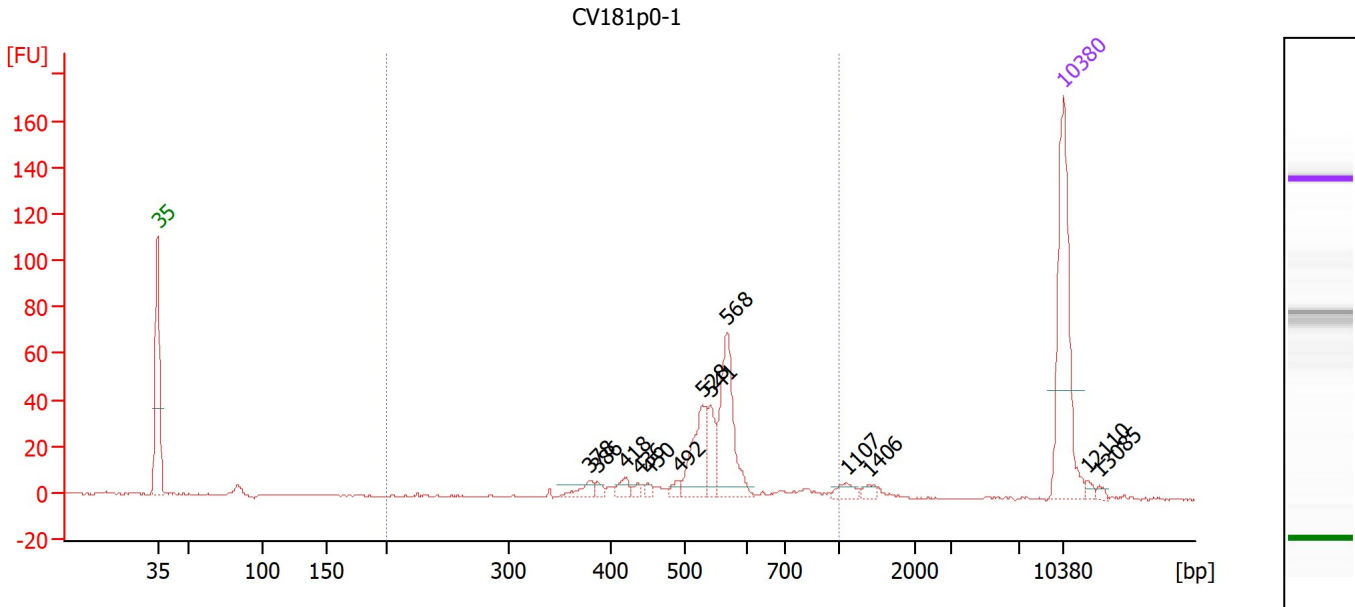
Ladder

Ladder Peak	Size	Area
1	35	160
2	50	210
3	100	208
4	150	221
5	200	242
6	300	270
7	400	305
8	500	306
9	600	336
10	700	321
11	1000	366
12	2000	413
13	3000	411
14	7000	400
15	10380	214

Assay Class: High Sensitivity DNA Assay
 Data Path: Z:\...\Bioanalyzer1_High Sensitivity DNA Assay_2019-12-12_003.xad

Created: 12/12/2019 10:08:55 AM
 Modified: 12/12/2019 10:44:40 AM

Electropherogram Summary



Overall Results for sample 1 : CV181p0-1

Number of peaks found: 13 Corr. Area 1: 266.4
 Noise: 0.3

Peak table for sample 1 : CV181p0-1

Peak	Size [bp]	Conc. [pg/μl]	Molarity [pmol/l]	Observations
1	35	125.00	5,411.3	Lower Marker
2	378	8.94	35.8	
3	386	3.83	15.0	
4	418	7.04	25.6	
5	436	3.40	11.8	
6	450	3.25	10.9	
7	492	4.81	14.8	
8	528	39.21	112.6	
9	541	21.47	60.2	
10	568	61.58	164.2	
11	1,107	5.93	8.1	
12	1,406	3.37	3.6	
13	10,380	75.00	10.9	Upper Marker
14	12,110	0.00	0.0	
15	13,085	0.00	0.0	

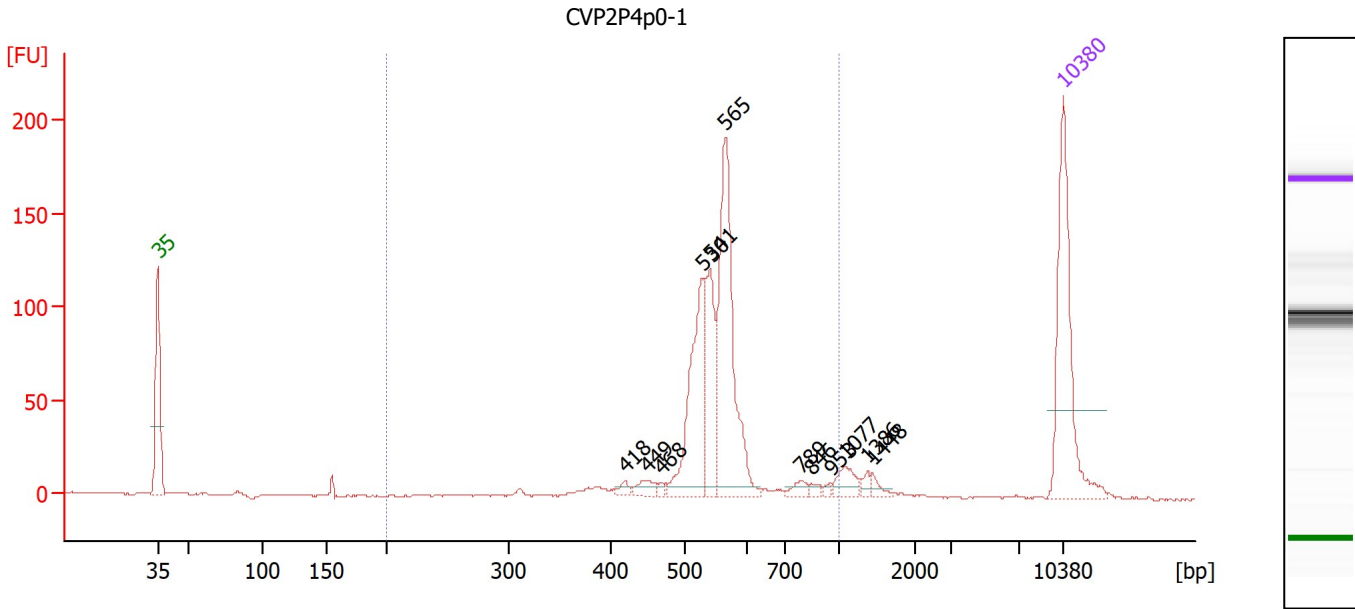
Region table for sample 1 : CV181p0-1

From [bp]	To [bp]	Corr. Area	% of Total	Average Size [bp]	Size distribution in CV [%]	Conc. [pg/μl]	Molarity [pmol/l]	Color
200	1,000	266.4	87	542	17.3	169.30	490.7	Blue

Assay Class: High Sensitivity DNA Assay
 Data Path: Z:\...\Bioanalyzer1_High Sensitivity DNA Assay_2019-12-12_003.xad

Created: 12/12/2019 10:08:55 AM
 Modified: 12/12/2019 10:44:40 AM

Electropherogram Summary Continued ...



Overall Results for sample 2 : CVP2P4p0-1

Number of peaks found: 12 Corr. Area 1: 710.9
 Noise: 0.3

Peak table for sample 2 : CVP2P4p0-1

Peak	Size [bp]	Conc. [pg/μl]	Molarity [pmol/l]	Observations
1	35	125.00	5,411.3	Lower Marker
2	418	4.00	14.5	
3	449	8.11	27.4	
4	468	2.68	8.7	
5	530	86.89	248.5	
6	541	54.49	152.6	
7	565	132.28	354.7	
8	789	5.50	10.6	
9	846	2.93	5.2	
10	953	1.76	2.8	
11	1,077	11.43	16.1	
12	1,386	3.43	3.8	
13	1,448	4.03	4.2	
14	10,380	75.00	10.9	Upper Marker

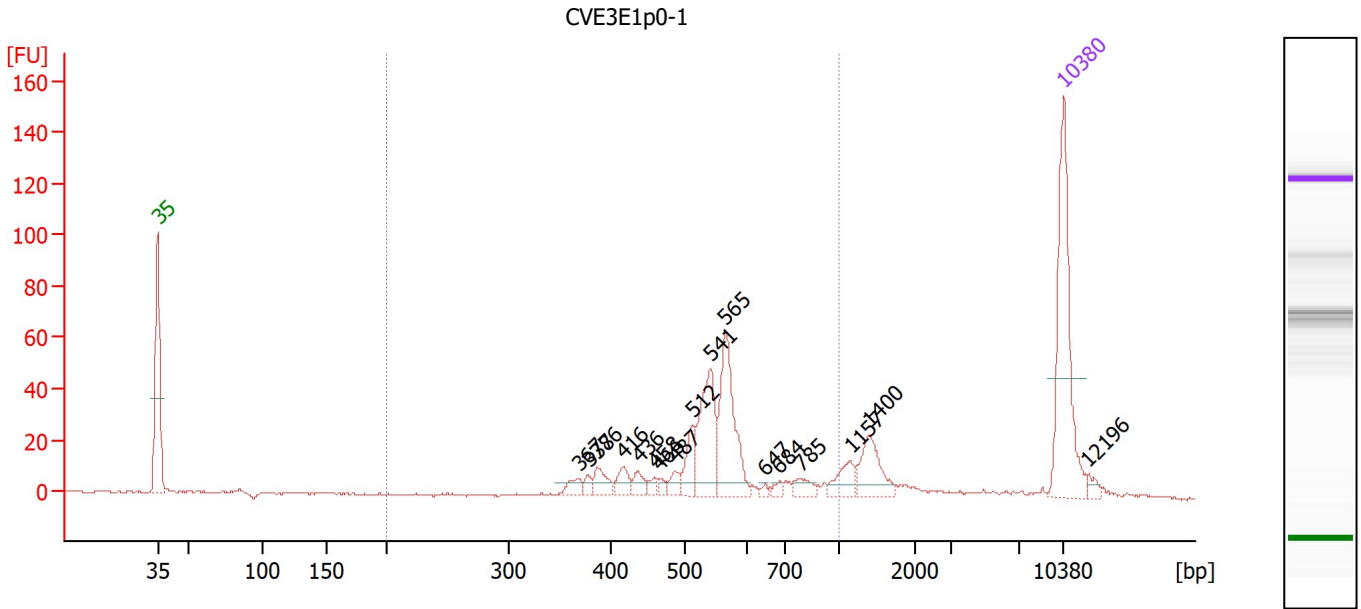
Region table for sample 2 : CVP2P4p0-1

From [bp]	To [bp]	Corr. Area	% of Total	Average Size [bp]	Size distribution in CV [%]	Conc. [pg/μl]	Molarity [pmol/l]	Color
200	1,000	710.9	89	553	16.2	327.73	927.3	Blue

Assay Class: High Sensitivity DNA Assay
 Data Path: Z:\...\Bioanalyzer1_High Sensitivity DNA Assay_2019-12-12_003.xad

Created: 12/12/2019 10:08:55 AM
 Modified: 12/12/2019 10:44:40 AM

Electropherogram Summary Continued ...



Overall Results for sample 3 : CVE3E1p0-1

Number of peaks found: 17 Corr. Area 1: 327.6
 Noise: 0.4

Peak table for sample 3 : CVE3E1p0-1

Peak	Size [bp]	Conc. [pg/μl]	Molarity [pmol/l]	Observations
1	35	125.00	5,411.3	Lower Marker
2	367	8.48	35.0	
3	377	4.64	18.7	
4	386	12.61	49.5	
5	416	10.62	38.7	
6	436	8.11	28.2	
7	458	4.56	15.1	
8	466	3.90	12.7	
9	487	6.99	21.7	
10	512	18.35	54.3	
11	541	53.07	148.7	
12	565	64.42	172.7	
13	647	2.28	5.3	
14	684	3.29	7.3	
15	785	7.94	15.3	
16	1,157	12.97	17.0	
17	1,400	24.68	26.7	
18	10,380	75.00	10.9	Upper Marker
19	12,196	0.00	0.0	

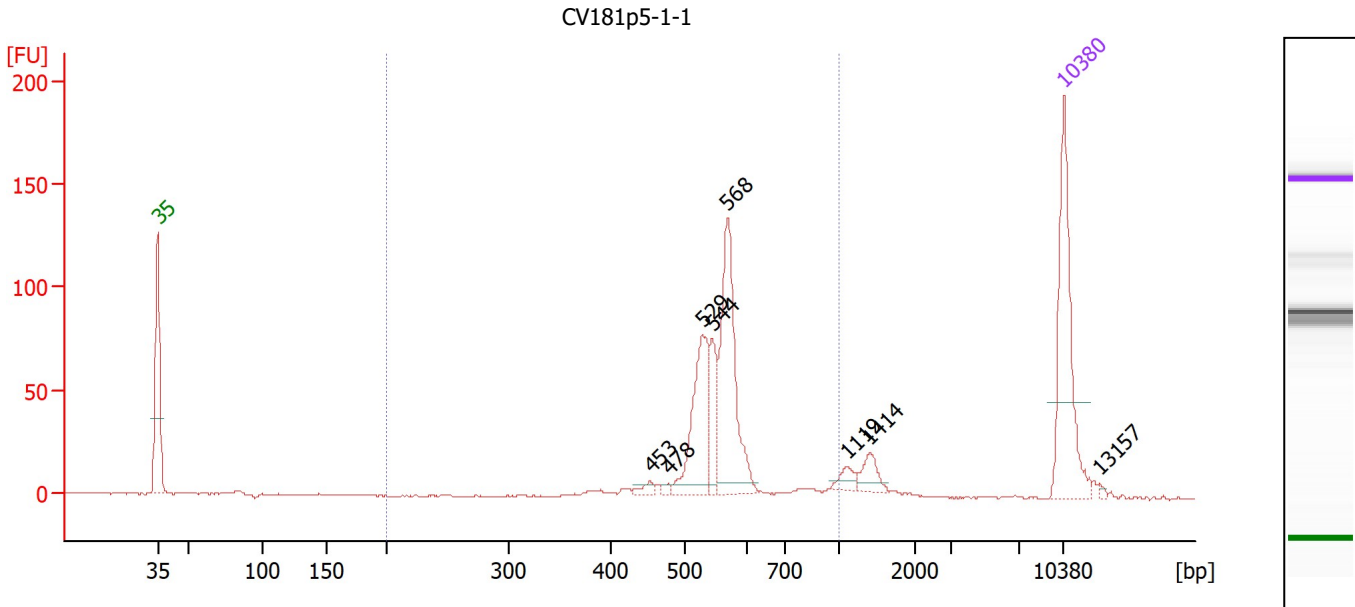
Region table for sample 3 : CVE3E1p0-1

From [bp]	To [bp]	Corr. Area	% of Total	Average Size [bp]	Size distribution in CV [%]	Conc. [pg/μl]	Molarity [pmol/l]	Color
200	1,000	327.6	73	548	21.5	223.98	653.6	Blue

Assay Class: High Sensitivity DNA Assay
 Data Path: Z:\...\Bioanalyzer1_High Sensitivity DNA Assay_2019-12-12_003.xad

Created: 12/12/2019 10:08:55 AM
 Modified: 12/12/2019 10:44:40 AM

Electropherogram Summary Continued ...



Overall Results for sample 4 : CV181p5-1-1

Number of peaks found: 8 Corr. Area 1: 461.4
 Noise: 0.4

Peak table for sample 4 : CV181p5-1-1

Peak	Size [bp]	Conc. [pg/μl]	Molarity [pmol/l]	Observations
1	35	125.00	5,411.3	Lower Marker
2	453	5.28	17.6	
3	478	2.82	8.9	
4	529	75.40	216.0	
5	544	31.07	86.5	
6	568	108.80	290.1	
7	1,119	7.87	10.7	
8	1,414	12.78	13.7	
9	10,380	75.00	10.9	Upper Marker
10	13,157	0.00	0.0	

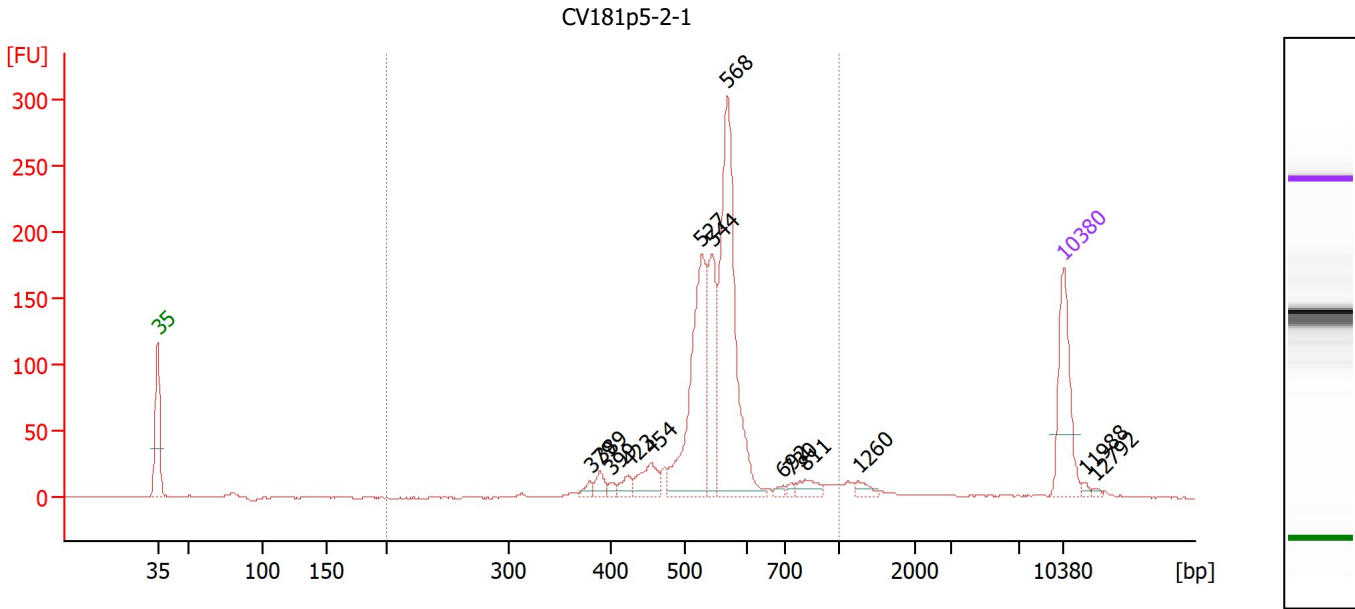
Region table for sample 4 : CV181p5-1-1

From [bp]	To [bp]	Corr. Area	% of Total	Average Size [bp]	Size distribution in CV [%]	Conc. [pg/μl]	Molarity [pmol/l]	Color
200	1,000	461.4	85	558	14.1	251.61	697.0	Blue

Assay Class: High Sensitivity DNA Assay
 Data Path: Z:\...\Bioanalyzer1_High Sensitivity DNA Assay_2019-12-12_003.xad

Created: 12/12/2019 10:08:55 AM
 Modified: 12/12/2019 10:44:40 AM

Electropherogram Summary Continued ...



Overall Results for sample 5 : CV181p5-2-1

Number of peaks found: 14 Corr. Area 1: 1,193.7
 Noise: 0.3

Peak table for sample 5 : CV181p5-2-1

Peak	Size [bp]	Conc. [pg/μl]	Molarity [pmol/l]	Observations
1	35	125.00	5,411.3	Lower Marker
2	379	8.81	35.3	
3	389	14.17	55.2	
4	399	6.02	22.8	
5	423	13.95	50.0	
6	454	34.10	113.7	
7	527	205.58	590.9	
8	544	101.09	281.7	
9	568	291.21	776.4	
10	692	3.86	8.4	
11	730	4.26	8.8	
12	811	14.52	27.1	
13	1,260	8.35	10.0	
14	10,380	75.00	10.9	Upper Marker
15	11,988	0.00	0.0	
16	12,792	0.00	0.0	

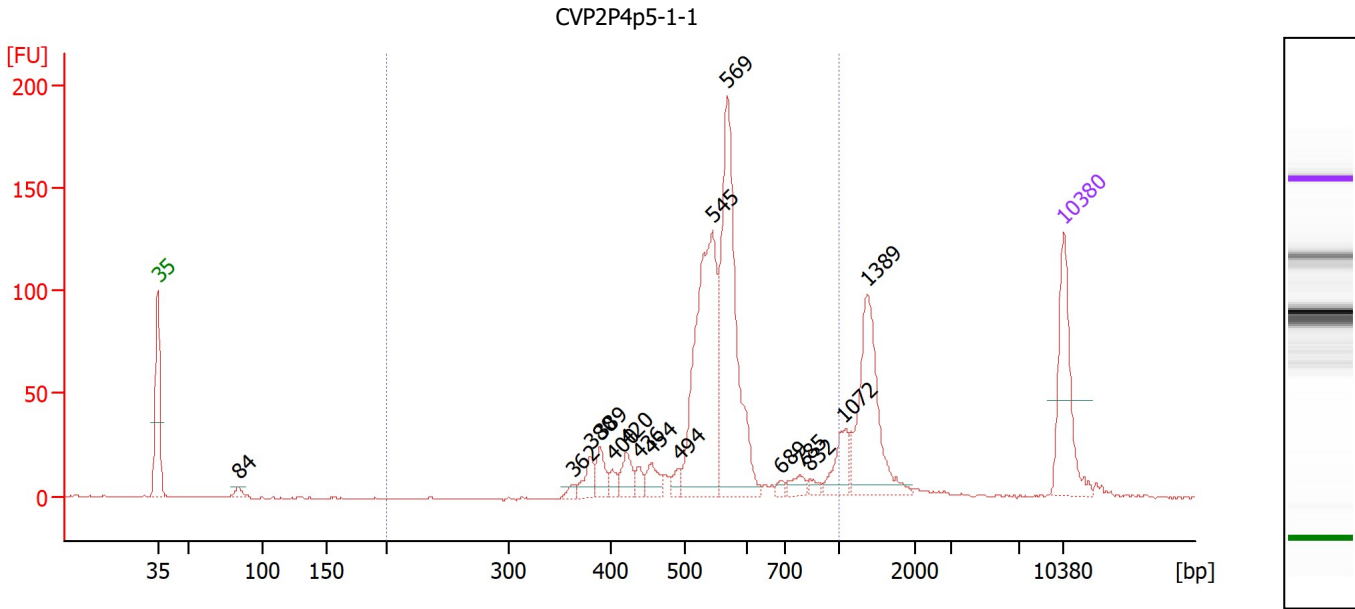
Region table for sample 5 : CV181p5-2-1

From [bp]	To [bp]	Corr. Area	% of Total	Average Size [bp]	Size distribution in CV [%]	Conc. [pg/μl]	Molarity [pmol/l]	Color
200	1,000	1,193.7	91	550	15.7	751.89	2,132.0	Blue

Assay Class: High Sensitivity DNA Assay
 Data Path: Z:\...\Bioanalyzer1_High Sensitivity DNA Assay_2019-12-12_003.xad

Created: 12/12/2019 10:08:55 AM
 Modified: 12/12/2019 10:44:40 AM

Electropherogram Summary Continued ...



Overall Results for sample 6 : CVP2P4p5-1-1

Number of peaks found: 16 Corr. Area 1: 819.6
 Noise: 0.5

Peak table for sample 6 : CVP2P4p5-1-1

Peak	Size [bp]	Conc. [pg/μl]	Molarity [pmol/l]	Observations
1	35	125.00	5,411.3	Lower Marker
2	84	8.97	161.8	
3	362	6.39	26.7	
4	389	19.88	79.3	
5	389	22.55	87.8	
6	400	10.39	39.3	
7	420	22.65	81.7	
8	436	11.60	40.3	
9	454	19.03	63.5	
10	494	10.78	33.1	
11	545	244.59	680.6	
12	569	242.89	647.3	
13	689	5.24	11.5	
14	785	11.63	22.4	
15	832	5.98	10.9	
16	1,072	31.34	44.3	
17	1,389	117.93	128.7	
18	10,380	75.00	10.9	Upper Marker

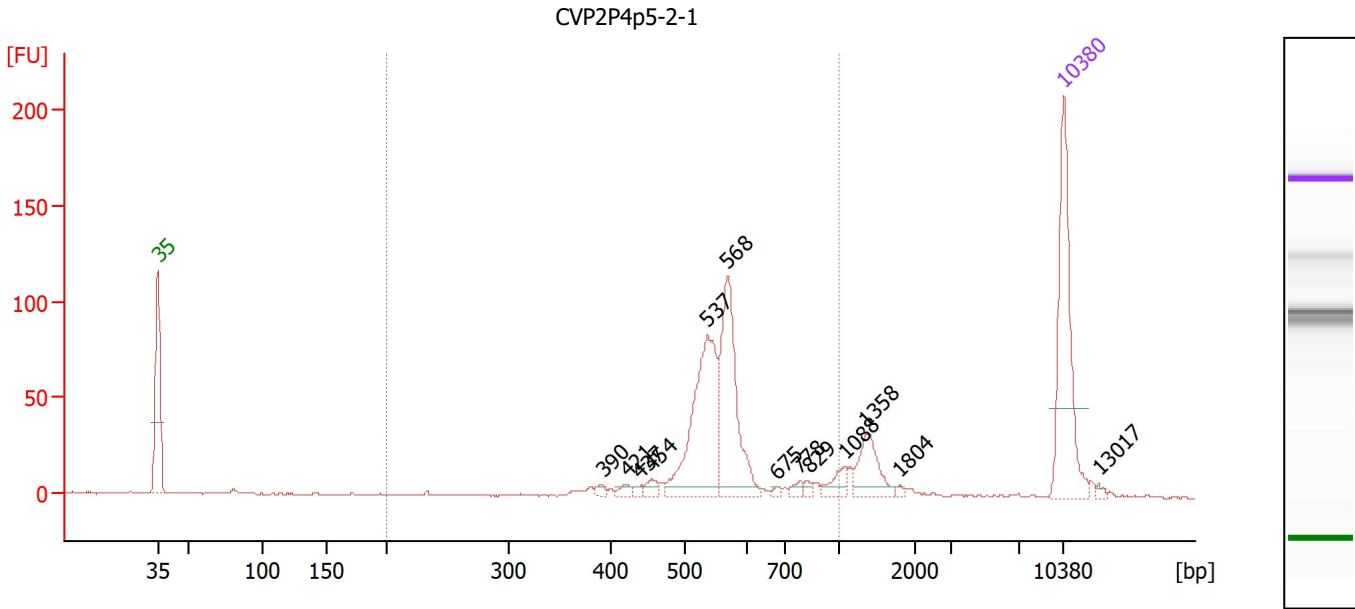
Region table for sample 6 : CVP2P4p5-1-1

From [bp]	To [bp]	Corr. Area	% of Total	Average Size [bp]	Size distribution in CV [%]	Conc. [pg/μl]	Molarity [pmol/l]	Color
200	1,000	819.6	76	551	18.2	668.12	1,908.6	Blue

Assay Class: High Sensitivity DNA Assay
 Data Path: Z:\...\Bioanalyzer1_High Sensitivity DNA Assay_2019-12-12_003.xad

Created: 12/12/2019 10:08:55 AM
 Modified: 12/12/2019 10:44:40 AM

Electropherogram Summary Continued ...



Overall Results for sample 7 : CVP2P4p5-2-1

Number of peaks found: 13 Corr. Area 1: 496.7
 Noise: 0.4

Peak table for sample 7 : CVP2P4p5-2-1

Peak	Size [bp]	Conc. [pg/μl]	Molarity [pmol/l]	Observations
1	35	125.00	5,411.3	Lower Marker
2	390	3.54	13.7	
3	421	4.17	15.0	
4	437	2.64	9.1	
5	454	6.45	21.5	
6	537	111.01	313.3	
7	568	98.03	261.4	
8	675	1.95	4.4	
9	778	4.33	8.4	
10	829	3.11	5.7	
11	1,088	10.10	14.1	
12	1,358	26.73	29.8	
13	1,804	1.58	1.3	
14	10,380	75.00	10.9	Upper Marker
15	13,017	0.00	0.0	

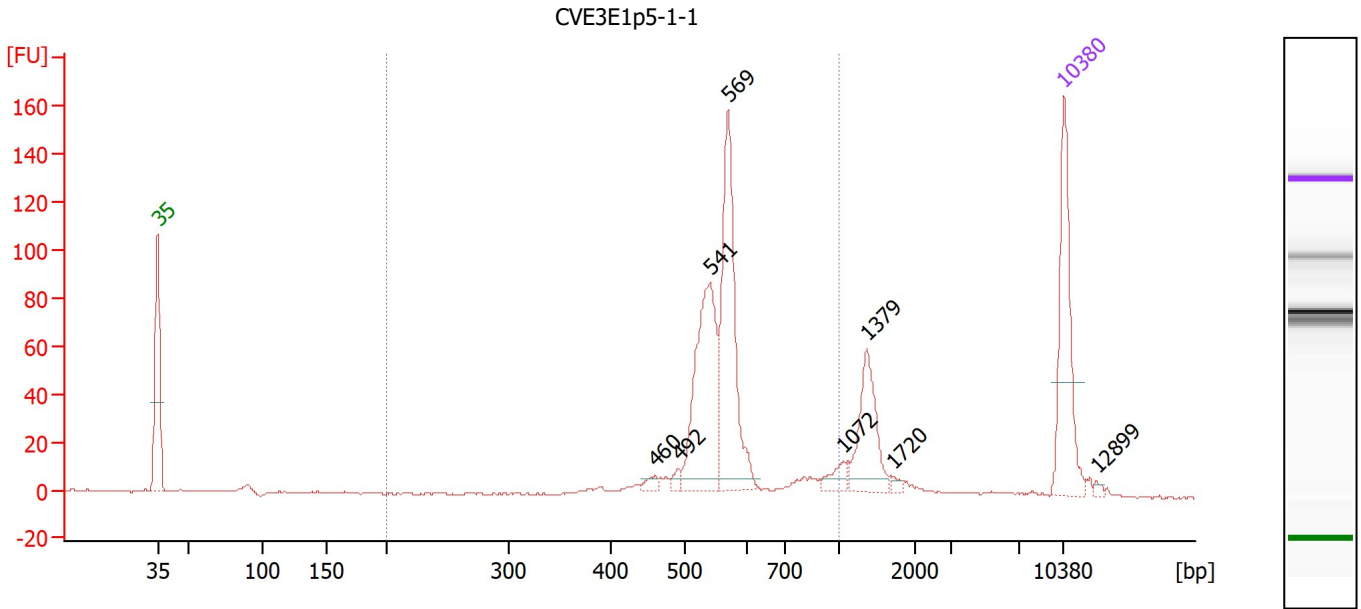
Region table for sample 7 : CVP2P4p5-2-1

From [bp]	To [bp]	Corr. Area	% of Total	Average Size [bp]	Size distribution in CV [%]	Conc. [pg/μl]	Molarity [pmol/l]	Color
200	1,000	496.7	79	561	17.9	257.13	719.5	Blue

Assay Class: High Sensitivity DNA Assay
 Data Path: Z:\...\Bioanalyzer1_High Sensitivity DNA Assay_2019-12-12_003.xad

Created: 12/12/2019 10:08:55 AM
 Modified: 12/12/2019 10:44:40 AM

Electropherogram Summary Continued ...



Overall Results for sample 8 : CVE3E1p5-1-1

Number of peaks found: 8 Corr. Area 1: 505.0
 Noise: 0.3

Peak table for sample 8 : CVE3E1p5-1-1

Peak	Size [bp]	Conc. [pg/μl]	Molarity [pmol/l]	Observations
1	35	125.00	5,411.3	Lower Marker
2	460	6.65	21.9	
3	492	5.58	17.2	
4	541	134.61	377.2	
5	569	143.05	380.7	
6	1,072	10.97	15.5	
7	1,379	52.92	58.1	
8	1,720	2.99	2.6	
9	10,380	75.00	10.9	Upper Marker
10	12,899	0.00	0.0	

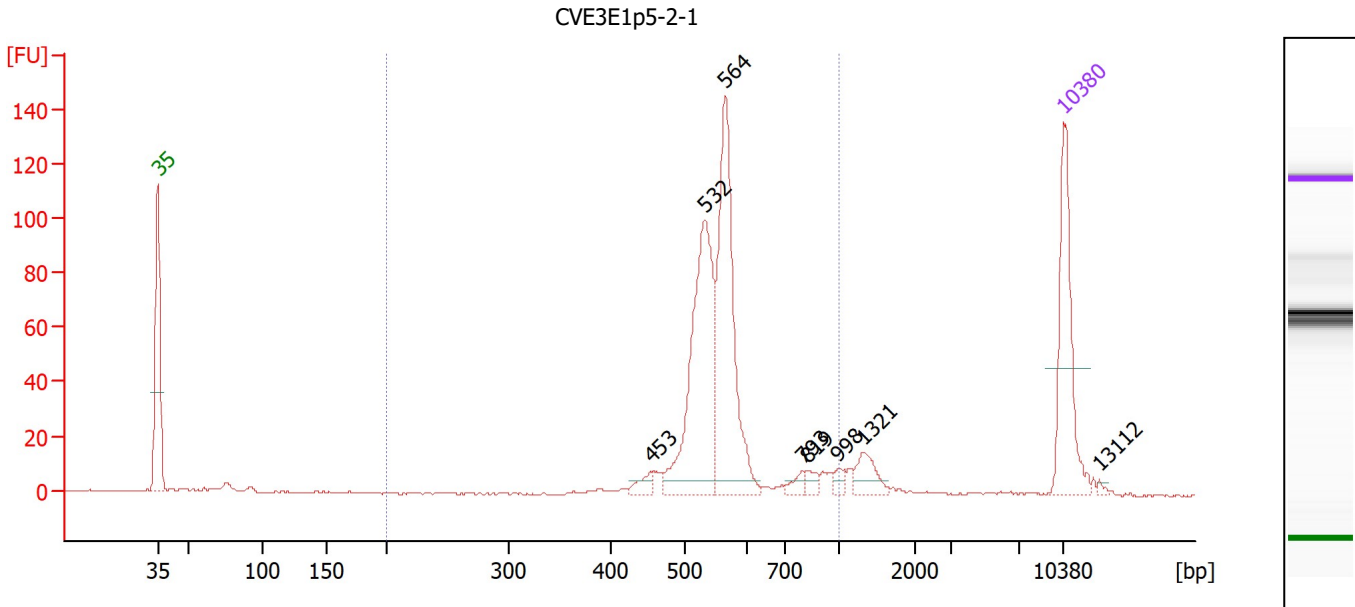
Region table for sample 8 : CVE3E1p5-1-1

From [bp]	To [bp]	Corr. Area	% of Total	Average Size [bp]	Size distribution in CV [%]	Conc. [pg/μl]	Molarity [pmol/l]	Color
200	1,000	505.0	74	567	16.9	349.67	960.0	Blue

Assay Class: High Sensitivity DNA Assay
 Data Path: Z:\...\Bioanalyzer1_High Sensitivity DNA Assay_2019-12-12_003.xad

Created: 12/12/2019 10:08:55 AM
 Modified: 12/12/2019 10:44:40 AM

Electropherogram Summary Continued ...



Overall Results for sample 9 : CVE3E1p5-2-1

Number of peaks found: 8 Corr. Area 1: 542.8
 Noise: 0.3

Peak table for sample 9 : CVE3E1p5-2-1

Peak	Size [bp]	Conc. [pg/μl]	Molarity [pmol/l]	Observations
1	35	125.00	5,411.3	Lower Marker
2	453	9.77	32.7	
3	532	182.33	519.0	
4	564	173.63	466.3	
5	793	7.44	14.2	
6	819	6.36	11.8	
7	998	5.67	8.6	
8	1,321	18.22	20.9	
9	10,380	75.00	10.9	Upper Marker
10	13,112	0.00	0.0	

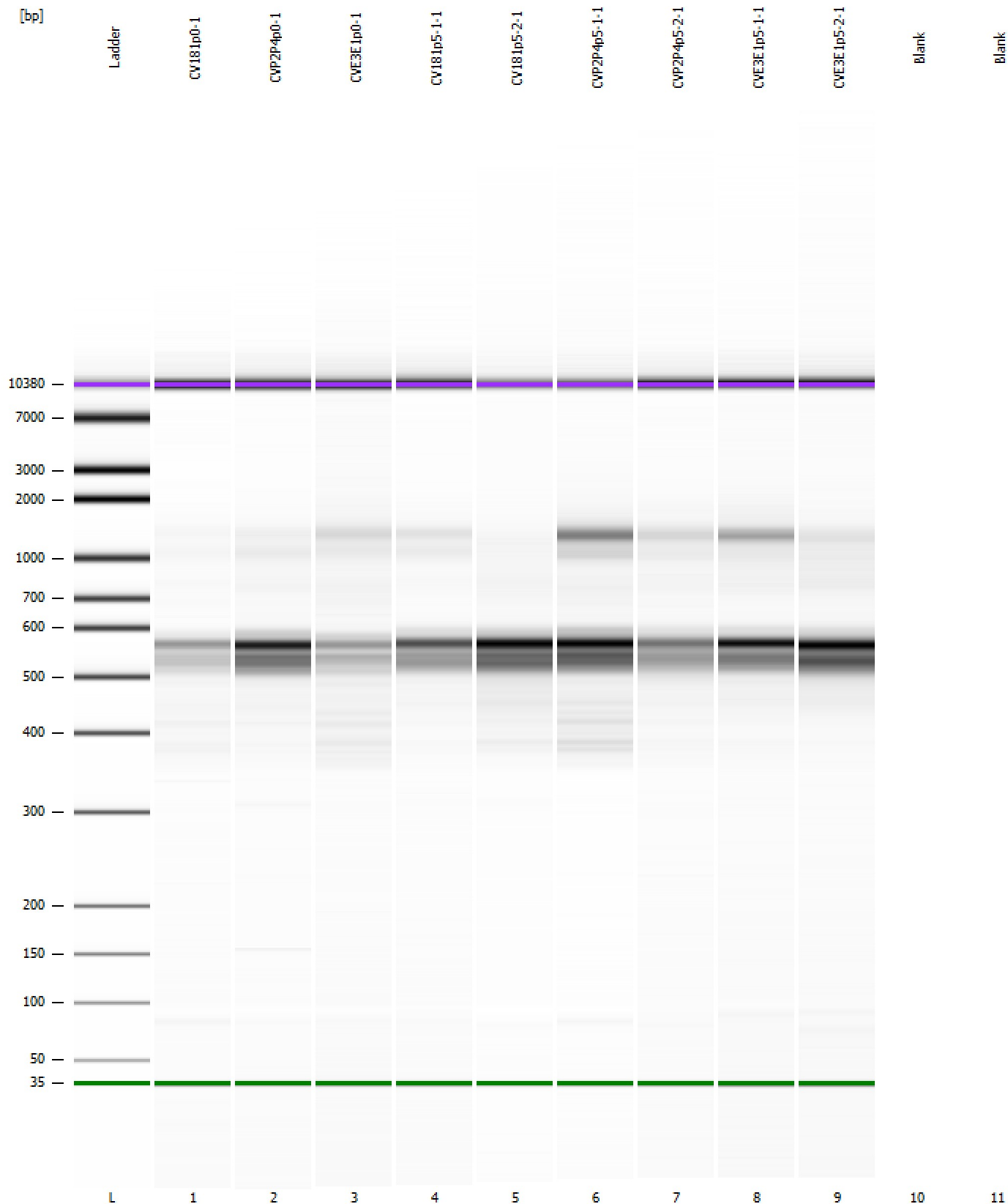
Region table for sample 9 : CVE3E1p5-2-1

From [bp]	To [bp]	Corr. Area	% of Total	Average Size [bp]	Size distribution in CV [%]	Conc. [pg/μl]	Molarity [pmol/l]	Color
200	1,000	542.8	85	564	16.4	411.35	1,132.4	Blue

Assay Class: High Sensitivity DNA Assay
Data Path: Z:\...\Bioanalyzer1_High Sensitivity DNA Assay_2019-12-12_003.xad

Created: 12/12/2019 10:08:55 AM
Modified: 12/12/2019 10:44:40 AM

Gel Image

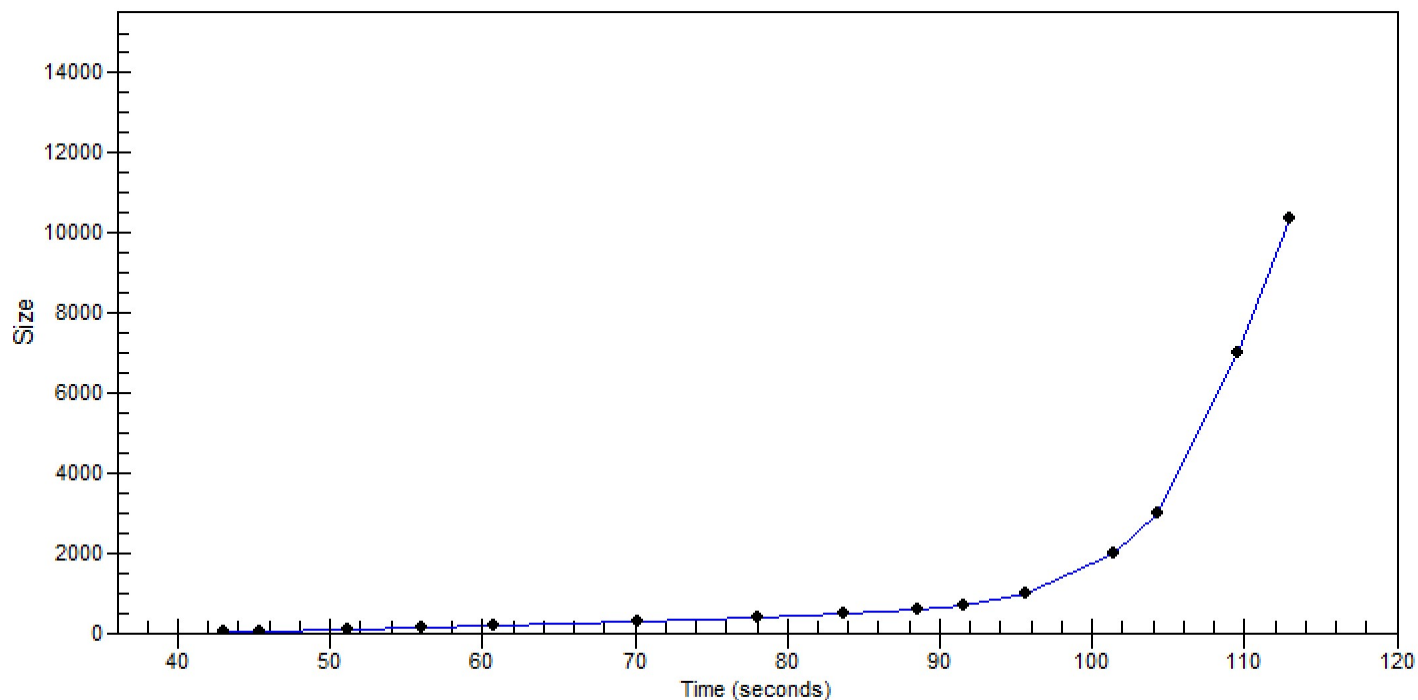


Assay Class: High Sensitivity DNA Assay
Data Path: Z:\...\Bioanalyzer1_High Sensitivity DNA Assay_2019-12-12_003.xad

Created: 12/12/2019 10:08:55 AM
Modified: 12/12/2019 10:44:40 AM

Curves

Standard Curve



Assay Class: High Sensitivity DNA Assay
Data Path: Z:\...\Bioanalyzer1_High Sensitivity DNA Assay_2019-12-12_003.xad

Created: 12/12/2019 10:08:55 AM
Modified: 12/12/2019 10:44:40 AM

Invalid Samples

Sample 10 has not been run, no results available.

Sample 11 has not been run, no results available.

Assay Class: High Sensitivity DNA Assay
 Data Path: Z:\...\Bioanalyzer1_High Sensitivity DNA Assay_2019-12-12_003.xad

Created: 12/12/2019 10:08:55 AM
 Modified: 12/12/2019 10:44:40 AM

Run Logbook

Description	Number	Source	Category	Sub Category	Time	Time Zone	User	Host
Run ended on port 1 (Number of wells acquired: 10)		Instrument	Run		12/12/2019 10:44:33 AM	(GMT --08:00) Pacific Standard Time	sbsuser	DESKTOP-4UNV VOB
Run started on port 1 (File: Z:\XADs\2019-12-12\Bioanalyze r1_High Sensitivity DNA Assay_2019-12-12_003.xad)		Instrument	Run		12/12/2019 10:09:01 AM	(GMT --08:00) Pacific Standard Time	sbsuser	DESKTOP-4UNV VOB
Product Number : G2938C		Instrument	Run		12/12/2019 10:09:01 AM	(GMT --08:00) Pacific Standard Time	sbsuser	DESKTOP-4UNV VOB
Name :		Instrument	Run		12/12/2019 10:09:01 AM	(GMT --08:00) Pacific Standard Time	sbsuser	DESKTOP-4UNV VOB
Vendor : Agilent Technologies		Instrument	Run		12/12/2019 10:09:01 AM	(GMT --08:00) Pacific Standard Time	sbsuser	DESKTOP-4UNV VOB
Serial# : DE34903152		Instrument	Run		12/12/2019 10:09:01 AM	(GMT --08:00) Pacific Standard Time	sbsuser	DESKTOP-4UNV VOB
Firmware : C.01.069		Instrument	Run		12/12/2019 10:09:01 AM	(GMT --08:00) Pacific Standard Time	sbsuser	DESKTOP-4UNV VOB
Cartridge : Electrode		Instrument	Run		12/12/2019 10:09:01 AM	(GMT --08:00) Pacific Standard Time	sbsuser	DESKTOP-4UNV VOB