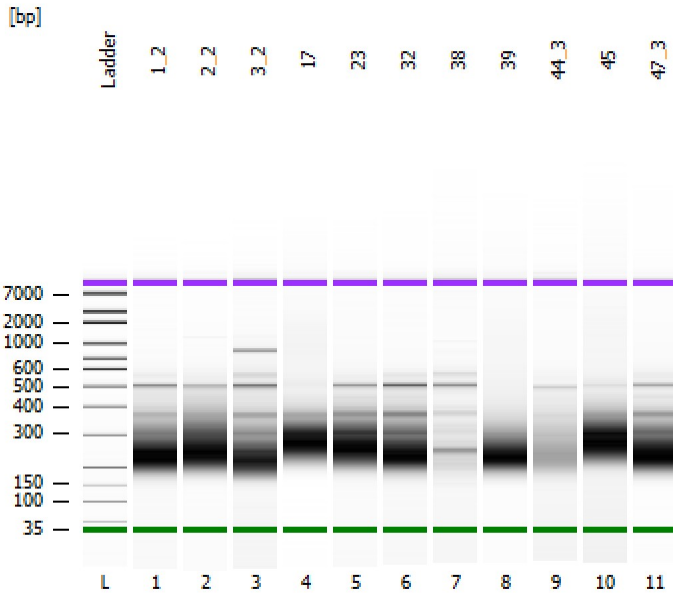


Assay Class: High Sensitivity DNA Assay
Data Path: Z:\...\Bioanalyzer1_High Sensitivity DNA Assay_2019-12-02_001.xad

Created: 12/2/2019 3:21:15 PM
Modified: 12/2/2019 4:02:36 PM

Electrophoresis File Run Summary



Instrument Information:

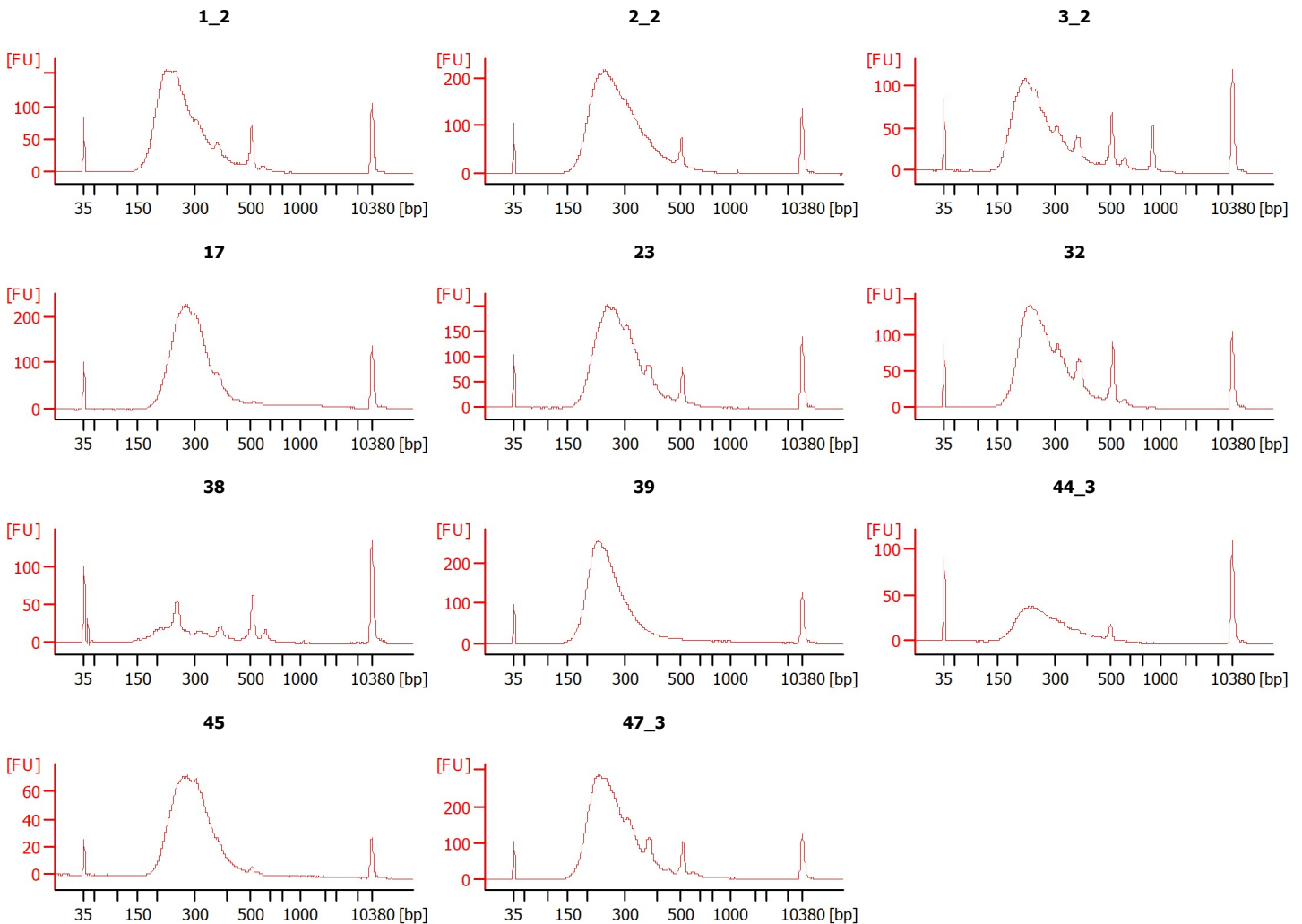
Instrument Name: DE34903152 Firmware: C.01.069
Serial#: DE34903152 Type: G2938C

Assay Information:

Assay Origin Path: C:\Program Files (x86)\Agilent\2100 bioanalyzer\2100 expert\assays\dsDNA\High Sensitivity DNA.xsy
Assay Class: High Sensitivity DNA Assay
Version: 1.03
Assay Comments: Copyright © 2003-2010 Agilent Technologies

Chip Information:

Chip Lot #:
Reagent Kit Lot #:
Chip Comments:



Assay Class: High Sensitivity DNA Assay
 Data Path: Z:\...\Bioanalyzer1_High Sensitivity DNA Assay_2019-12-02_001.xad

Created: 12/2/2019 3:21:15 PM
 Modified: 12/2/2019 4:02:36 PM

Electrophoresis File Run Summary (Chip Summary)

Sample Name	Sample Comment	Rest. Digest	Status	Observation	Result Label	Result Color
1_2		<input type="checkbox"/>	✓			
2_2		<input type="checkbox"/>	✓			
3_2		<input type="checkbox"/>	✓			
17		<input type="checkbox"/>	✓			
23		<input type="checkbox"/>	✓			
32		<input type="checkbox"/>	✓			
38		<input type="checkbox"/>	✓			
39		<input type="checkbox"/>	✓			
44_3		<input type="checkbox"/>	✓			
45		<input type="checkbox"/>	✓			
47_3		<input type="checkbox"/>	✓			
Ladder		<input type="checkbox"/>	✓			

Chip Lot #

Reagent Kit Lot #

Chip Comments :

Assay Class: High Sensitivity DNA Assay
 Data Path: Z:\...\Bioanalyzer1_High Sensitivity DNA Assay_2019-12-02_001.xad

Created: 12/2/2019 3:21:15 PM
 Modified: 12/2/2019 4:02:36 PM

Electrophoresis Assay Details

General Analysis Settings

Number of Available Sample and Ladder Wells (Max.) : 12
 Minimum Visible Range [s] : 32
 Maximum Visible Range [s] : 138
 Start Analysis Time Range [s] : 33
 End Analysis Time Range [s] : 137.5
 Ladder Concentration [pg/μl] : 1950
 Uses Standard Area for Ladder Fragments
 Lower Marker Concentration [pg/μl] : 125
 Upper Marker Concentration [pg/μl] : 75
 Used Upper Marker for Quantitation
 Standard Curve Fit is Point to Point
 Show Data Aligned to Lower and Upper Marker

Integrator Settings

Integration Start Time [s] : 33.05
 Integration End Time [s] : 137
 Slope Threshold : 0.8
 Height Threshold [FU] : 5
 Area Threshold : 0.1
 Width Threshold [s] : 0.6
 Baseline Plateau [s] : 0.5

Filter Settings

Filter Width [s] : 0.5
 Polynomial Order : 4

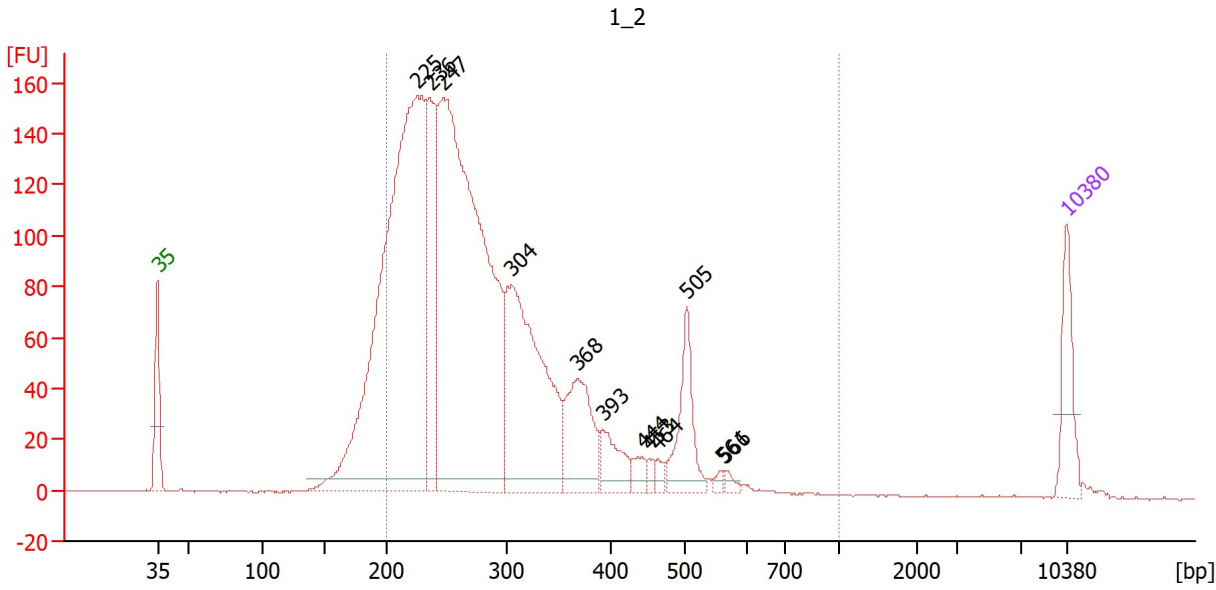
Ladder

Ladder Peak	Size	Area
1	35	160
2	50	210
3	100	208
4	150	221
5	200	242
6	300	270
7	400	305
8	500	306
9	600	336
10	700	321
11	1000	366
12	2000	413
13	3000	411
14	7000	400
15	10380	214

Assay Class: High Sensitivity DNA Assay
 Data Path: Z:\...\Bioanalyzer1_High Sensitivity DNA Assay_2019-12-02_001.xad

Created: 12/2/2019 3:21:15 PM
 Modified: 12/2/2019 4:02:36 PM

Electropherogram Summary



Overall Results for sample 1 : 1_2

Number of peaks found: 12 Corr. Area 1: 2,689.3
 Noise: 0.2

Peak table for sample 1 : 1_2

Peak	Size [bp]	Conc. [pg/μl]	Molarity [pmol/l]	Observations
1	35	125.00	5,411.3	Lower Marker
2	225	1,418.38	9,534.2	
3	236	296.18	1,903.0	
4	247	1,358.46	8,326.0	
5	304	530.12	2,644.0	
6	368	174.39	718.9	
7	393	70.44	271.8	
8	444	22.68	77.4	
9	453	11.83	39.6	
10	464	12.74	41.6	
11	505	122.49	367.5	
12	561	8.03	21.7	
13	566	10.23	27.4	
14	10,380	75.00	10.9	Upper Marker

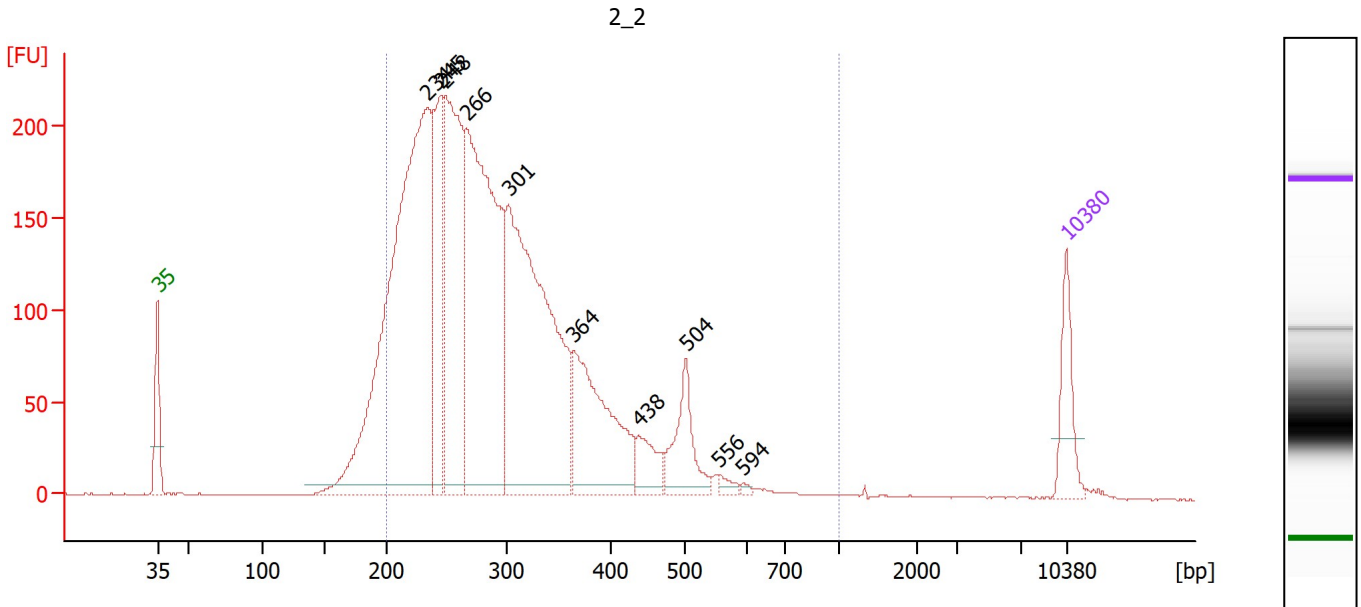
Region table for sample 1 : 1_2

From [bp]	To [bp]	Corr. Area	% of Total	Average Size [bp]	Size distribution in CV [%]	Conc. [pg/μl]	Molarity [pmol/l]	Color
200	1,000	2,689.3	89	293	29.9	3,650.53	20,504.5	Blue

Assay Class: High Sensitivity DNA Assay
 Data Path: Z:\...\Bioanalyzer1_High Sensitivity DNA Assay_2019-12-02_001.xad

Created: 12/2/2019 3:21:15 PM
 Modified: 12/2/2019 4:02:36 PM

Electropherogram Summary Continued ...



Overall Results for sample 2 : 2_2

Number of peaks found: 10 Corr. Area 1: 4,165.2
 Noise: 0.2

Peak table for sample 2 : 2_2

Peak	Size [bp]	Conc. [pg/μl]	Molarity [pmol/l]	Observations
1	35	125.00	5,411.3	Lower Marker
2	234	1,387.88	8,987.5	
3	245	276.58	1,711.2	
4	248	571.23	3,484.9	
5	266	903.52	5,152.1	
6	301	902.82	4,543.3	
7	364	334.64	1,391.8	
8	438	67.08	232.2	
9	504	124.19	373.6	
10	556	13.48	36.7	
11	594	5.02	12.8	
12	10,380	75.00	10.9	Upper Marker

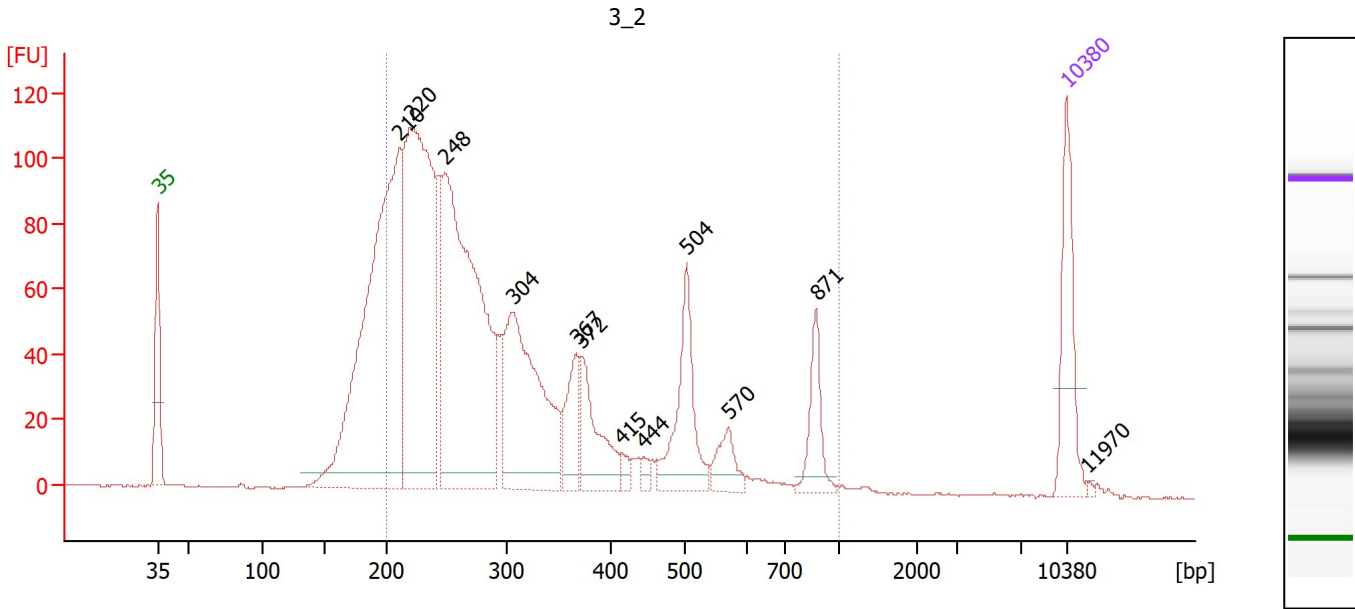
Region table for sample 2 : 2_2

From [bp]	To [bp]	Corr. Area	% of Total	Average Size [bp]	Size distribution in CV [%]	Conc. [pg/μl]	Molarity [pmol/l]	Color
200	1,000	4,165.2	93	300	28.2	4,364.85	23,785.7	Blue

Assay Class: High Sensitivity DNA Assay
 Data Path: Z:\...\Bioanalyzer1_High Sensitivity DNA Assay_2019-12-02_001.xad

Created: 12/2/2019 3:21:15 PM
 Modified: 12/2/2019 4:02:36 PM

Electropherogram Summary Continued ...



Overall Results for sample 3 : 3_2

Number of peaks found: 12 Corr. Area 1: 1,917.9
 Noise: 0.2

Peak table for sample 3 : 3_2

Peak	Size [bp]	Conc. [pg/μl]	Molarity [pmol/l]	Observations
1	35	125.00	5,411.3	Lower Marker
2	210	661.22	4,759.5	
3	220	548.37	3,784.1	
4	248	567.23	3,461.1	
5	304	282.15	1,404.2	
6	367	65.19	269.2	
7	372	87.64	357.2	
8	415	11.06	40.4	
9	444	8.90	30.3	
10	504	116.16	349.1	
11	570	34.50	91.6	
12	871	51.88	90.2	
13	10,380	75.00	10.9	Upper Marker
14	11,970	0.00	0.0	

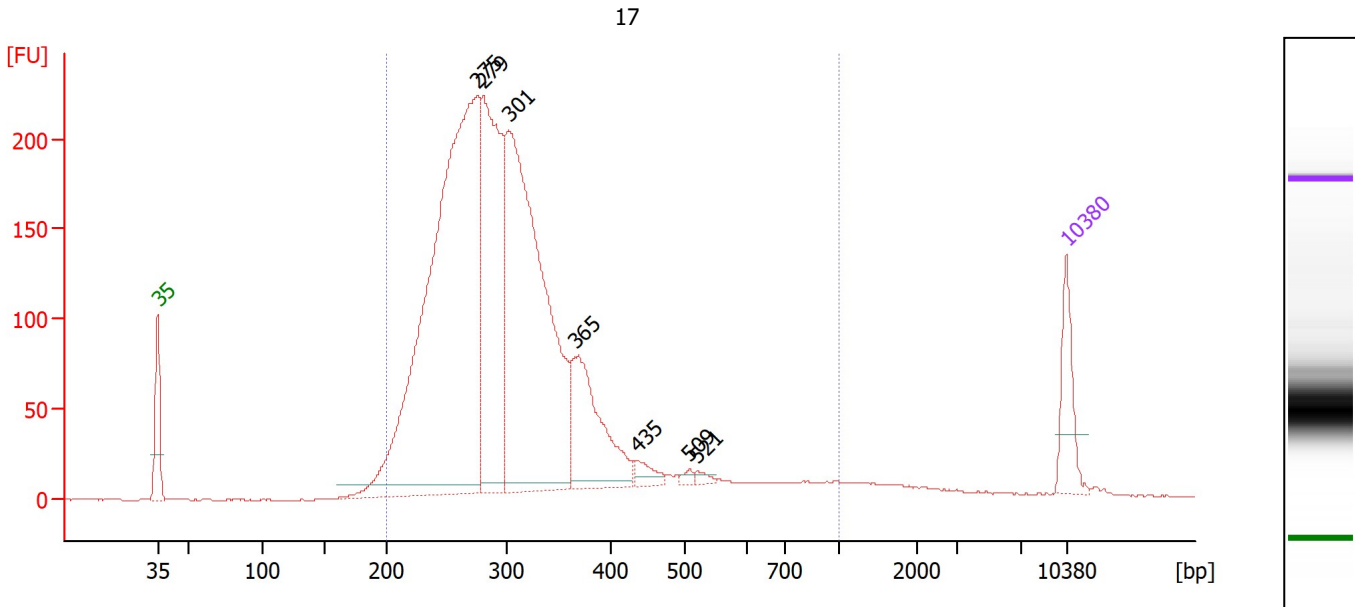
Region table for sample 3 : 3_2

From [bp]	To [bp]	Corr. Area	% of Total	Average Size [bp]	Size distribution in CV [%]	Conc. [pg/μl]	Molarity [pmol/l]	Color
200	1,000	1,917.9	84	329	46.4	2,155.71	11,789.9	Blue

Assay Class: High Sensitivity DNA Assay
 Data Path: Z:\...\Bioanalyzer1_High Sensitivity DNA Assay_2019-12-02_001.xad

Created: 12/2/2019 3:21:15 PM
 Modified: 12/2/2019 4:02:36 PM

Electropherogram Summary Continued ...



Overall Results for sample 4 : 17

Number of peaks found: 7 Corr. Area 1: 3,666.1
 Noise: 0.2

Peak table for sample 4 : 17

Peak	Size [bp]	Conc. [pg/μl]	Molarity [pmol/l]	Observations
1	35	125.00	5,411.3	Lower Marker
2	275	1,585.32	8,732.2	
3	279	604.82	3,282.0	
4	301	1,068.12	5,373.8	
5	365	270.66	1,122.4	
6	435	28.61	99.6	
7	509	8.75	26.0	
8	521	9.93	28.9	
9	10,380	75.00	10.9	Upper Marker

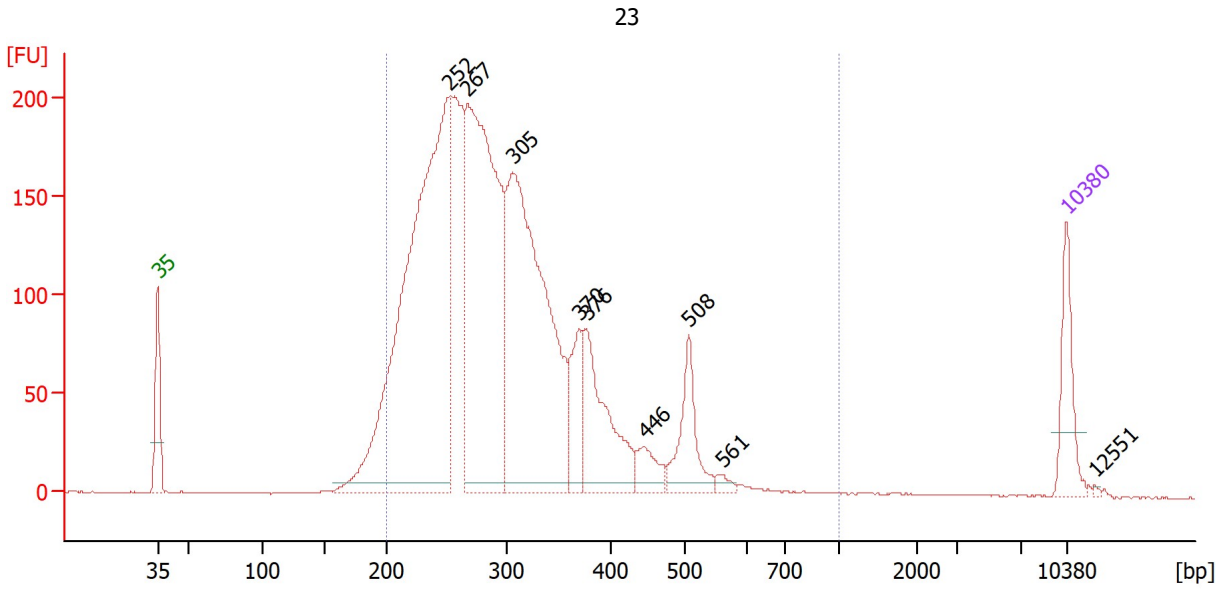
Region table for sample 4 : 17

From [bp]	To [bp]	Corr. Area	% of Total	Average Size [bp]	Size distribution in CV [%]	Conc. [pg/μl]	Molarity [pmol/l]	Color
200	1,000	3,666.1	95	316	32.3	3,866.06	20,069.7	Blue

Assay Class: High Sensitivity DNA Assay
 Data Path: Z:\...\Bioanalyzer1_High Sensitivity DNA Assay_2019-12-02_001.xad

Created: 12/2/2019 3:21:15 PM
 Modified: 12/2/2019 4:02:36 PM

Electropherogram Summary Continued ...



Overall Results for sample 5 : 23

Number of peaks found: 9 Corr. Area 1: 3,678.9
 Noise: 0.3

Peak table for sample 5 : 23

Peak	Size [bp]	Conc. [pg/μl]	Molarity [pmol/l]	Observations
1	35	125.00	5,411.3	Lower Marker
2	252	1,264.51	7,607.1	
3	267	881.55	5,007.1	
4	305	826.64	4,110.1	
5	370	99.13	405.9	
6	376	216.01	869.7	
7	446	49.29	167.5	
8	508	110.98	331.2	
9	561	11.99	32.4	
10	10,380	75.00	10.9	Upper Marker
11	12,551	0.00	0.0	

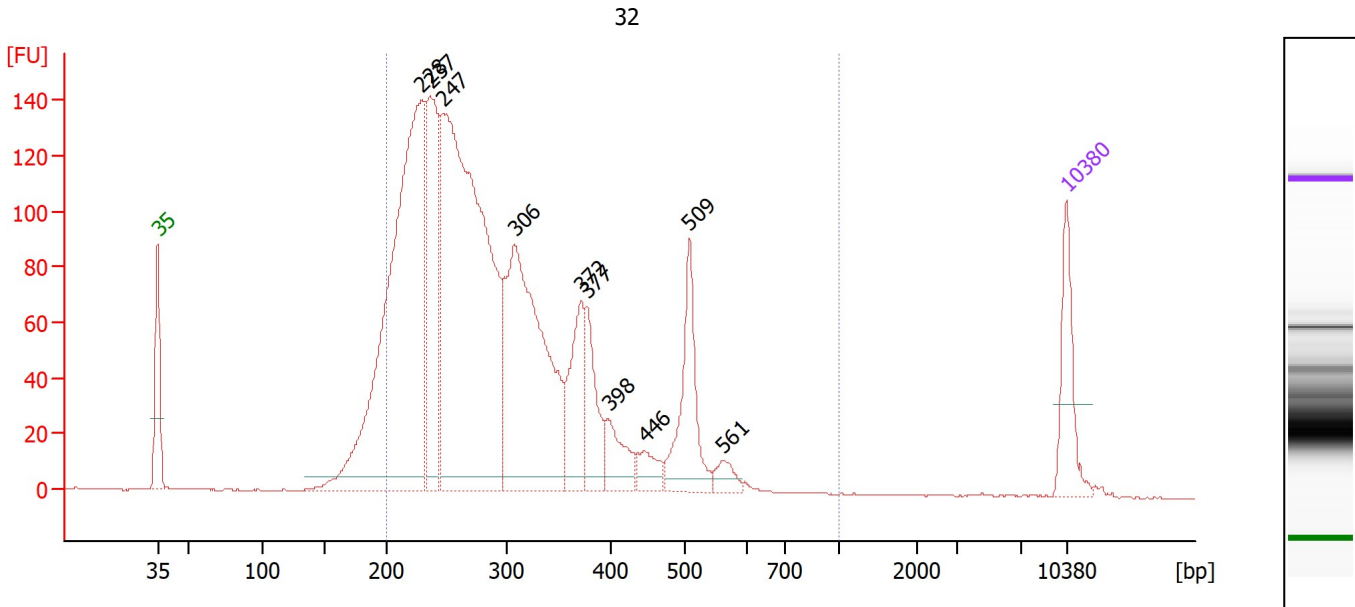
Region table for sample 5 : 23

From [bp]	To [bp]	Corr. Area	% of Total	Average Size [bp]	Size distribution in CV [%]	Conc. [pg/μl]	Molarity [pmol/l]	Color
200	1,000	3,678.9	96	305	27.4	3,710.41	19,800.4	Blue

Assay Class: High Sensitivity DNA Assay
 Data Path: Z:\...\Bioanalyzer1_High Sensitivity DNA Assay_2019-12-02_001.xad

Created: 12/2/2019 3:21:15 PM
 Modified: 12/2/2019 4:02:36 PM

Electropherogram Summary Continued ...



Overall Results for sample 6 : 32

Number of peaks found: 10 Corr. Area 1: 2,534.2
 Noise: 0.2

Peak table for sample 6 : 32

Peak	Size [bp]	Conc. [pg/μl]	Molarity [pmol/l]	Observations
1	35	125.00	5,411.3	Lower Marker
2	228	1,002.75	6,650.5	
3	237	308.18	1,973.1	
4	247	1,094.48	6,712.5	
5	306	559.61	2,771.6	
6	372	132.02	538.1	
7	377	97.95	393.7	
8	398	63.83	243.2	
9	446	35.89	121.9	
10	509	149.49	445.0	
11	561	23.42	63.3	
12	10,380	75.00	10.9	Upper Marker

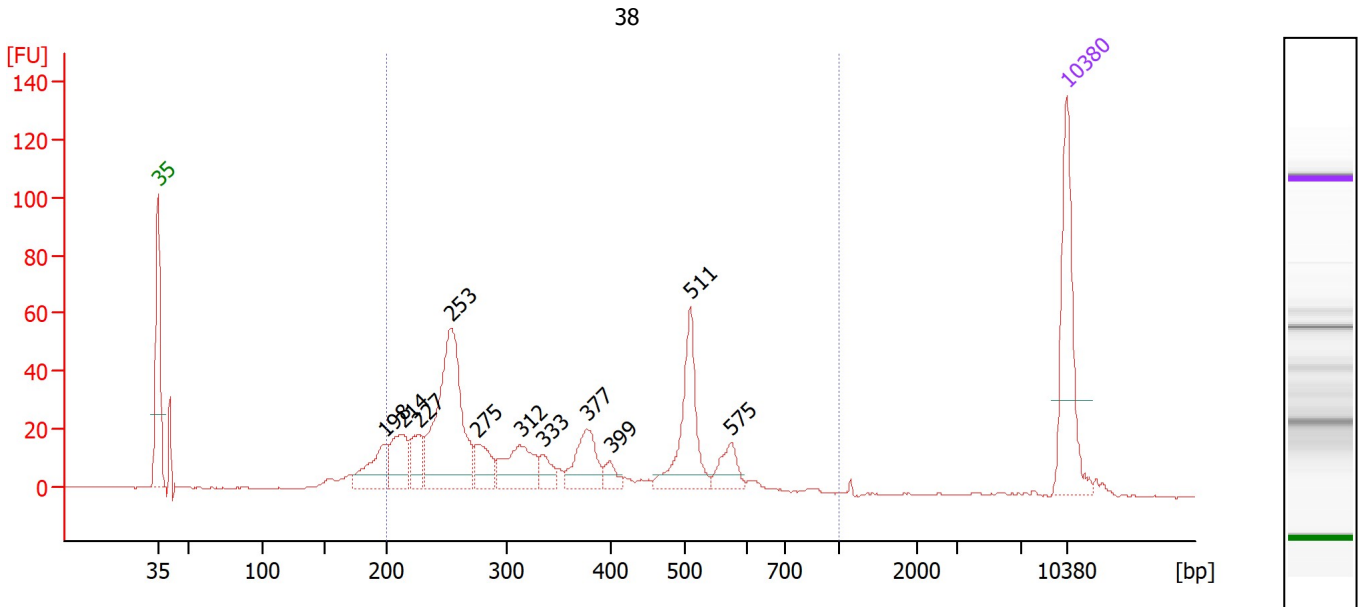
Region table for sample 6 : 32

From [bp]	To [bp]	Corr. Area	% of Total	Average Size [bp]	Size distribution in CV [%]	Conc. [pg/μl]	Molarity [pmol/l]	Color
200	1,000	2,534.2	92	303	30.1	3,278.13	17,910.6	Blue

Assay Class: High Sensitivity DNA Assay
 Data Path: Z:\...\Bioanalyzer1_High Sensitivity DNA Assay_2019-12-02_001.xad

Created: 12/2/2019 3:21:15 PM
 Modified: 12/2/2019 4:02:36 PM

Electropherogram Summary Continued ...



Overall Results for sample 7 : 38

Number of peaks found: 11 Corr. Area 1: 621.9
 Noise: 0.2

Peak table for sample 7 : 38

Peak	Size [bp]	Conc. [pg/µl]	Molarity [pmol/l]	Observations
1	35	125.00	5,411.3	Lower Marker
2	198	48.77	373.0	
3	214	47.48	336.6	
4	227	31.70	211.9	
5	253	189.09	1,132.9	
6	275	32.39	178.7	
7	312	53.41	259.1	
8	333	17.59	79.9	
9	377	45.83	184.2	
10	399	11.43	43.4	
11	511	79.20	235.0	
12	575	22.80	60.0	
13	10,380	75.00	10.9	Upper Marker

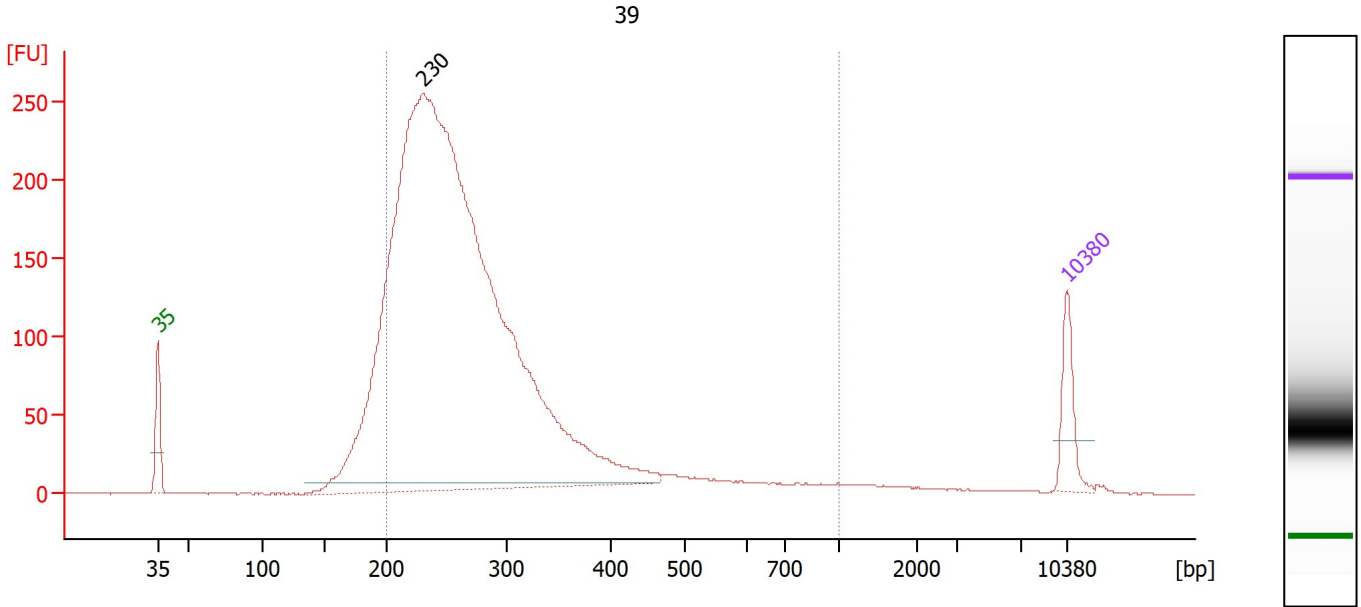
Region table for sample 7 : 38

From [bp]	To [bp]	Corr. Area	% of Total	Average Size [bp]	Size distribution in CV [%]	Conc. [pg/µl]	Molarity [pmol/l]	Color
200	1,000	621.9	88	355	35.7	597.28	2,993.9	Blue

Assay Class: High Sensitivity DNA Assay
 Data Path: Z:\...\Bioanalyzer1_High Sensitivity DNA Assay_2019-12-02_001.xad

Created: 12/2/2019 3:21:15 PM
 Modified: 12/2/2019 4:02:36 PM

Electropherogram Summary Continued ...



Overall Results for sample 8 : 39

Number of peaks found: 1 Corr. Area 1: 3,605.2
 Noise: 0.2

Peak table for sample 8 : 39

Peak	Size [bp]	Conc. [pg/μl]	Molarity [pmol/l]	Observations
1	35	125.00	5,411.3	Lower Marker
2	230	4,403.95	28,953.7	
3	10,380	75.00	10.9	Upper Marker

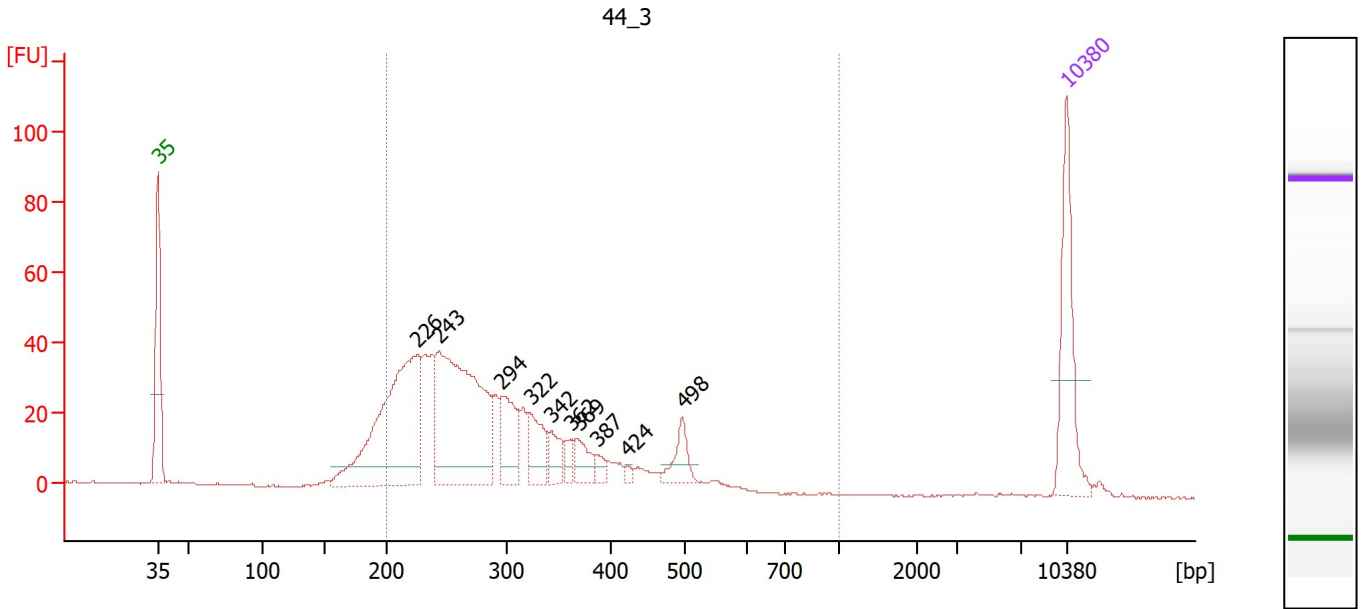
Region table for sample 8 : 39

From [bp]	To [bp]	Corr. Area	% of Total	Average Size [bp]	Size distribution in CV [%]	Conc. [pg/μl]	Molarity [pmol/l]	Color
200	1,000	3,605.2	88	286	35.3	3,993.51	22,983.7	Blue

Assay Class: High Sensitivity DNA Assay
 Data Path: Z:\...\Bioanalyzer1_High Sensitivity DNA Assay_2019-12-02_001.xad

Created: 12/2/2019 3:21:15 PM
 Modified: 12/2/2019 4:02:36 PM

Electropherogram Summary Continued ...



Overall Results for sample 9 : 44_3

Number of peaks found: 10 Corr. Area 1: 731.8
 Noise: 0.2

Peak table for sample 9 : 44_3

Peak	Size [bp]	Conc. [pg/μl]	Molarity [pmol/l]	Observations
1	35	125.00	5,411.3	Lower Marker
2	226	283.50	1,904.3	
3	243	289.89	1,807.8	
4	294	64.89	334.3	
5	322	44.07	207.4	
6	342	25.64	113.5	
7	362	12.69	53.2	
8	369	24.69	101.4	
9	387	8.95	35.0	
10	424	4.28	15.3	
11	498	26.75	81.4	
12	10,380	75.00	10.9	Upper Marker

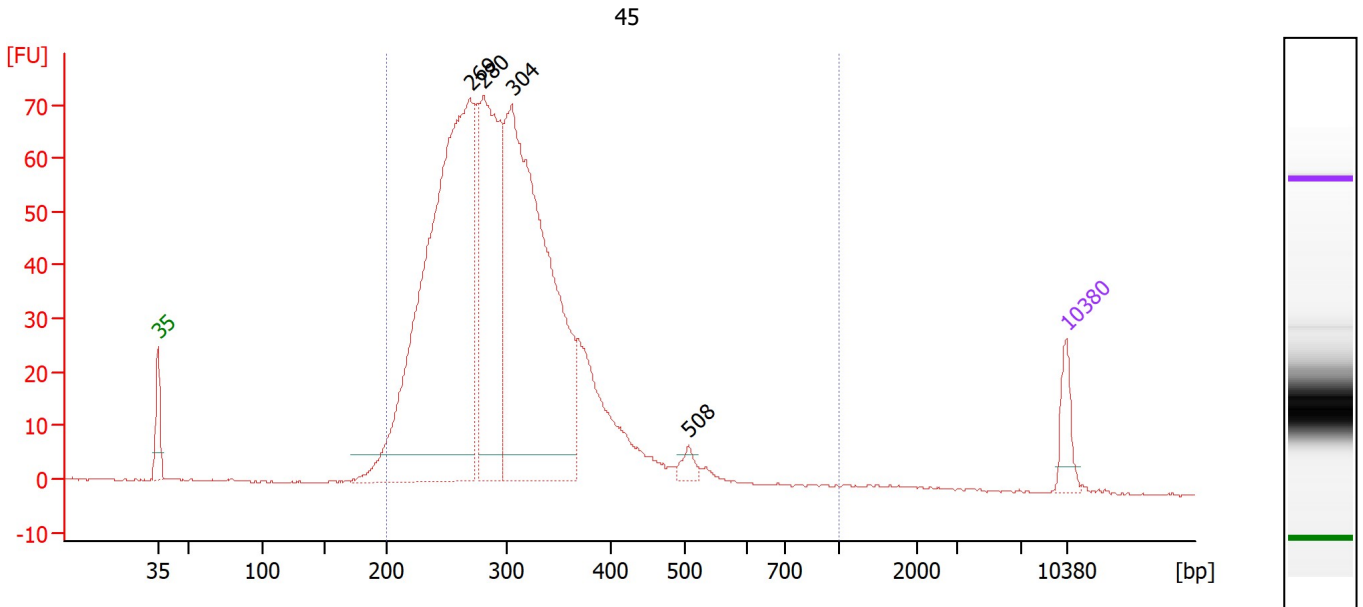
Region table for sample 9 : 44_3

From [bp]	To [bp]	Corr. Area	% of Total	Average Size [bp]	Size distribution in CV [%]	Conc. [pg/μl]	Molarity [pmol/l]	Color
200	1,000	731.8	90	298	27.4	897.43	4,931.3	Blue

Assay Class: High Sensitivity DNA Assay
 Data Path: Z:\...\Bioanalyzer1_High Sensitivity DNA Assay_2019-12-02_001.xad

Created: 12/2/2019 3:21:15 PM
 Modified: 12/2/2019 4:02:36 PM

Electropherogram Summary Continued ...



Overall Results for sample 10 : 45

Number of peaks found: 4
 Noise: 0.2
 Corr. Area 1: 1,216.7

Peak table for sample 10 : 45

Peak	Size [bp]	Conc. [pg/μl]	Molarity [pmol/l]	Observations
1	35	125.00	5,411.3	Lower Marker
2	269	2,463.53	13,874.1	
3	280	994.61	5,380.4	
4	304	2,008.75	10,013.0	
5	508	41.72	124.5	
6	10,380	75.00	10.9	Upper Marker

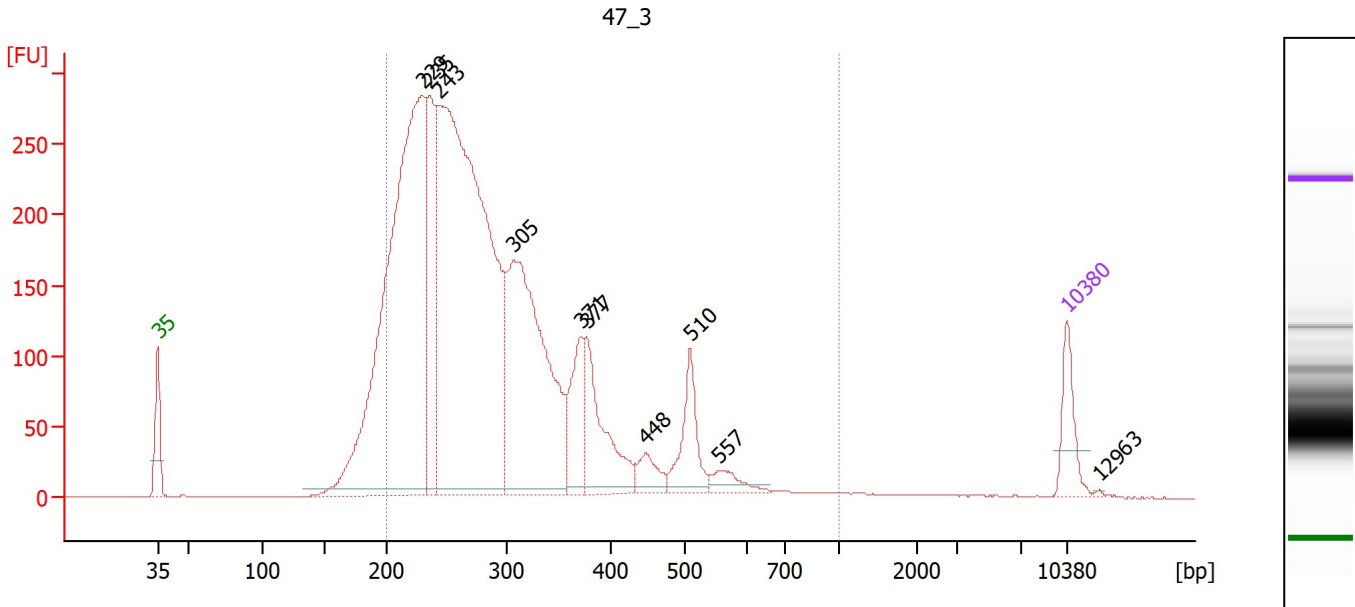
Region table for sample 10 : 45

From [bp]	To [bp]	Corr. Area	% of Total	Average Size [bp]	Size distribution in CV [%]	Conc. [pg/μl]	Molarity [pmol/l]	Color
200	1,000	1,216.7	97	306	24.6	6,369.48	33,327.7	Blue

Assay Class: High Sensitivity DNA Assay
 Data Path: Z:\...\Bioanalyzer1_High Sensitivity DNA Assay_2019-12-02_001.xad

Created: 12/2/2019 3:21:15 PM
 Modified: 12/2/2019 4:02:36 PM

Electropherogram Summary Continued ...



Overall Results for sample 11 : 47_3

Number of peaks found: 10 Corr. Area 1: 4,883.0
 Noise: 0.3

Peak table for sample 11 : 47_3

Peak	Size [bp]	Conc. [pg/μl]	Molarity [pmol/l]	Observations
1	35	125.00	5,411.3	Lower Marker
2	229	1,747.11	11,535.9	
3	235	379.00	2,439.4	
4	243	2,026.21	12,628.5	
5	305	872.61	4,336.2	
6	371	163.08	665.3	
7	377	241.76	971.7	
8	448	57.47	194.4	
9	510	137.43	408.2	
10	557	42.75	116.3	
11	10,380	75.00	10.9	Upper Marker
12	12,963	0.00	0.0	

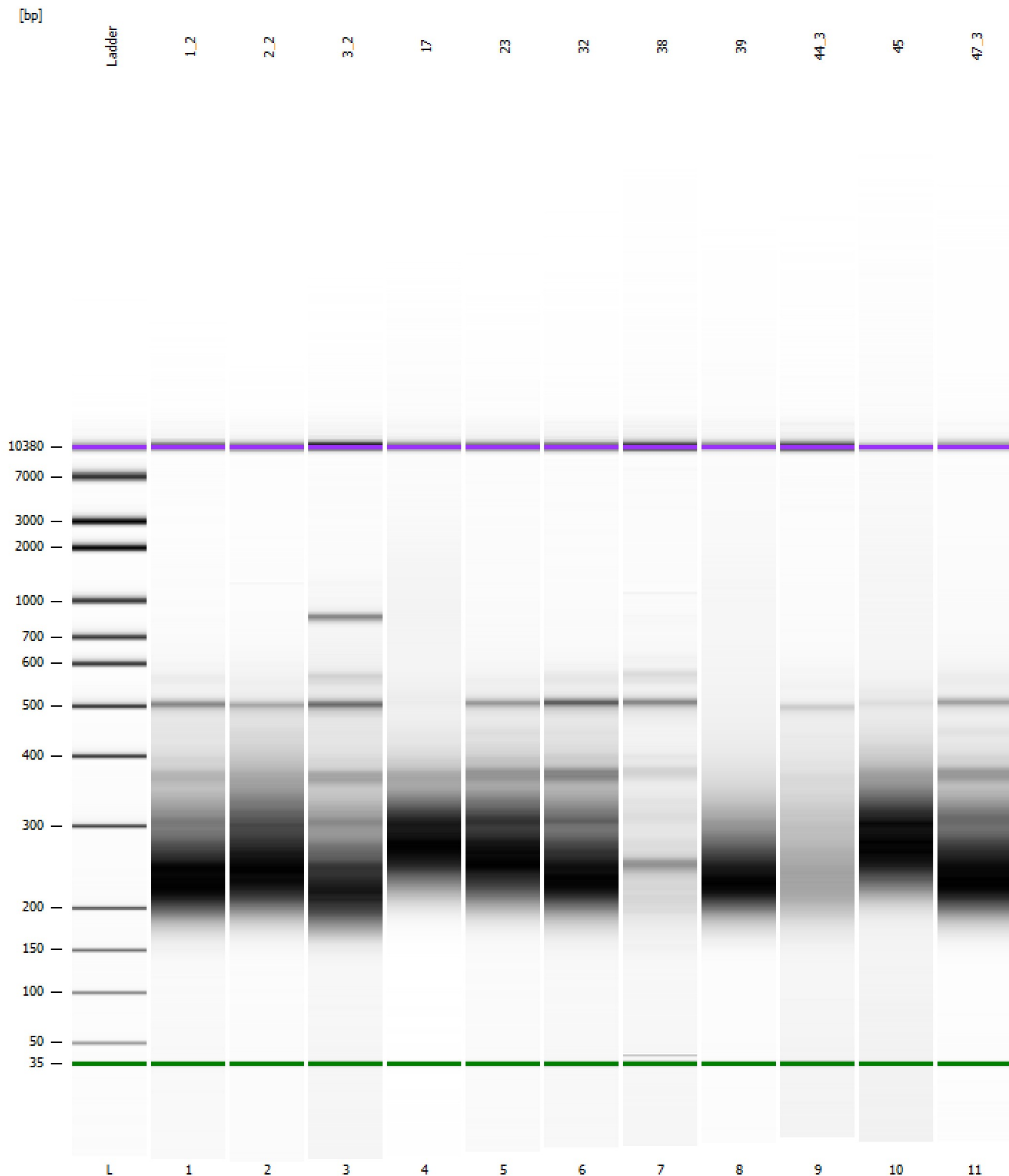
Region table for sample 11 : 47_3

From [bp]	To [bp]	Corr. Area	% of Total	Average Size [bp]	Size distribution in CV [%]	Conc. [pg/μl]	Molarity [pmol/l]	Color
200	1,000	4,883.0	91	298	31.2	5,257.07	29,120.1	Blue

Assay Class: High Sensitivity DNA Assay
Data Path: Z:\...\Bioanalyzer1_High Sensitivity DNA Assay_2019-12-02_001.xad

Created: 12/2/2019 3:21:15 PM
Modified: 12/2/2019 4:02:36 PM

Gel Image

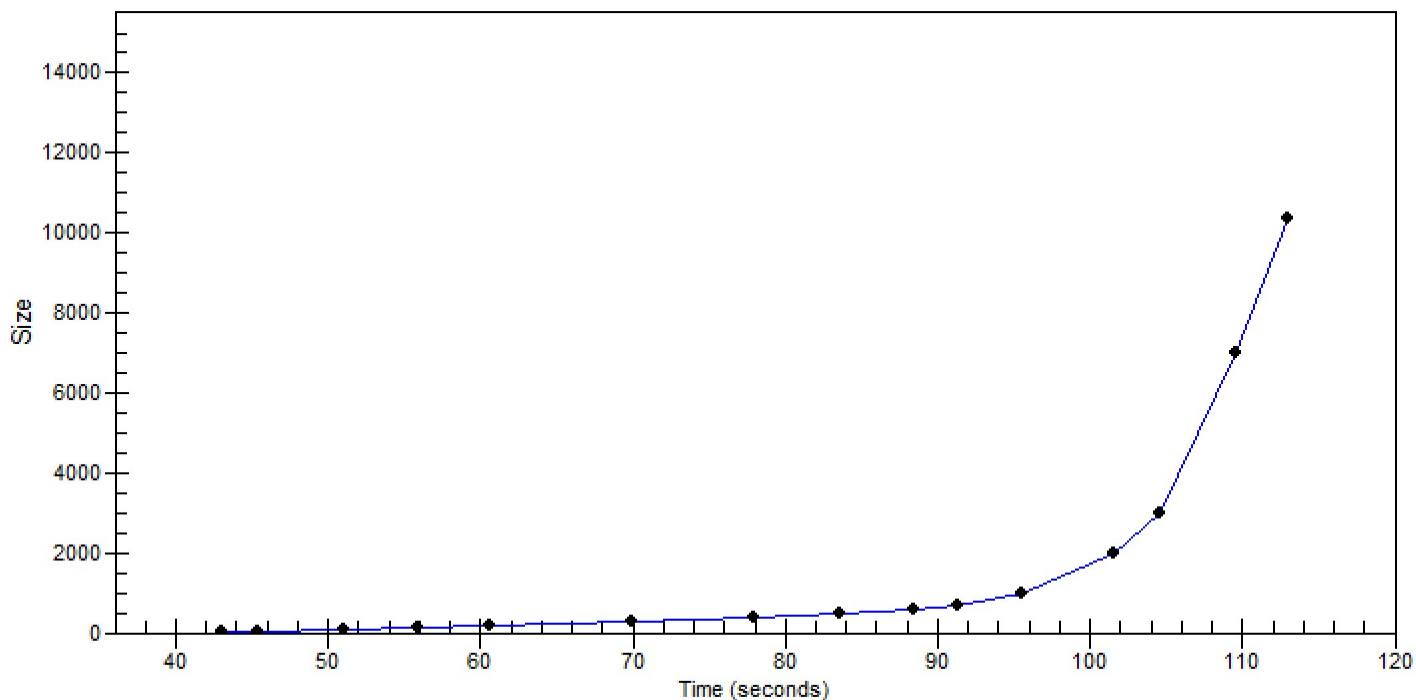


Assay Class: High Sensitivity DNA Assay
Data Path: Z:\...\Bioanalyzer1_High Sensitivity DNA Assay_2019-12-02_001.xad

Created: 12/2/2019 3:21:15 PM
Modified: 12/2/2019 4:02:36 PM

Curves

Standard Curve



Assay Class: High Sensitivity DNA Assay
 Data Path: Z:\...\Bioanalyzer1_High Sensitivity DNA Assay_2019-12-02_001.xad

Created: 12/2/2019 3:21:15 PM
 Modified: 12/2/2019 4:02:36 PM

Run Logbook

Description	Number	Source	Category	Sub Category	Time	Time Zone	User	Host
Run ended on port 1 (Number of wells acquired: 12)		Instrument	Run		12/2/2019 4:02:34 PM	(GMT --08:00) Pacific Standard Time	sbsuser	DESKTOP-4UNV VOB
Run started on port 1 (File: Z:\XADs\2019-12-02\Bioanalyze r1_High Sensitivity DNA Assay_2019-12-02_001.xad)		Instrument	Run		12/2/2019 3:21:20 PM	(GMT --08:00) Pacific Standard Time	sbsuser	DESKTOP-4UNV VOB
Product Number : G2938C		Instrument	Run		12/2/2019 3:21:20 PM	(GMT --08:00) Pacific Standard Time	sbsuser	DESKTOP-4UNV VOB
Name :		Instrument	Run		12/2/2019 3:21:20 PM	(GMT --08:00) Pacific Standard Time	sbsuser	DESKTOP-4UNV VOB
Vendor : Agilent Technologies		Instrument	Run		12/2/2019 3:21:20 PM	(GMT --08:00) Pacific Standard Time	sbsuser	DESKTOP-4UNV VOB
Serial# : DE34903152		Instrument	Run		12/2/2019 3:21:20 PM	(GMT --08:00) Pacific Standard Time	sbsuser	DESKTOP-4UNV VOB
Firmware : C.01.069		Instrument	Run		12/2/2019 3:21:20 PM	(GMT --08:00) Pacific Standard Time	sbsuser	DESKTOP-4UNV VOB
Cartridge : Electrode		Instrument	Run		12/2/2019 3:21:20 PM	(GMT --08:00) Pacific Standard Time	sbsuser	DESKTOP-4UNV VOB