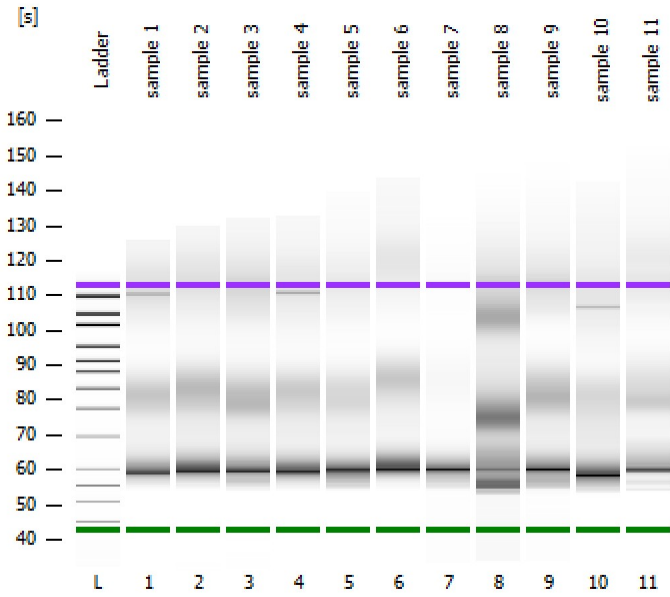


Assay Class: High Sensitivity DNA Assay  
Data Path: Z:\...\Bioanalyzer1\_High Sensitivity DNA Assay\_2019-12-09\_002.xad

Created: 12/9/2019 3:20:12 PM  
Modified: 12/9/2019 4:00:41 PM

**Electrophoresis File Run Summary**



Instrument Information:

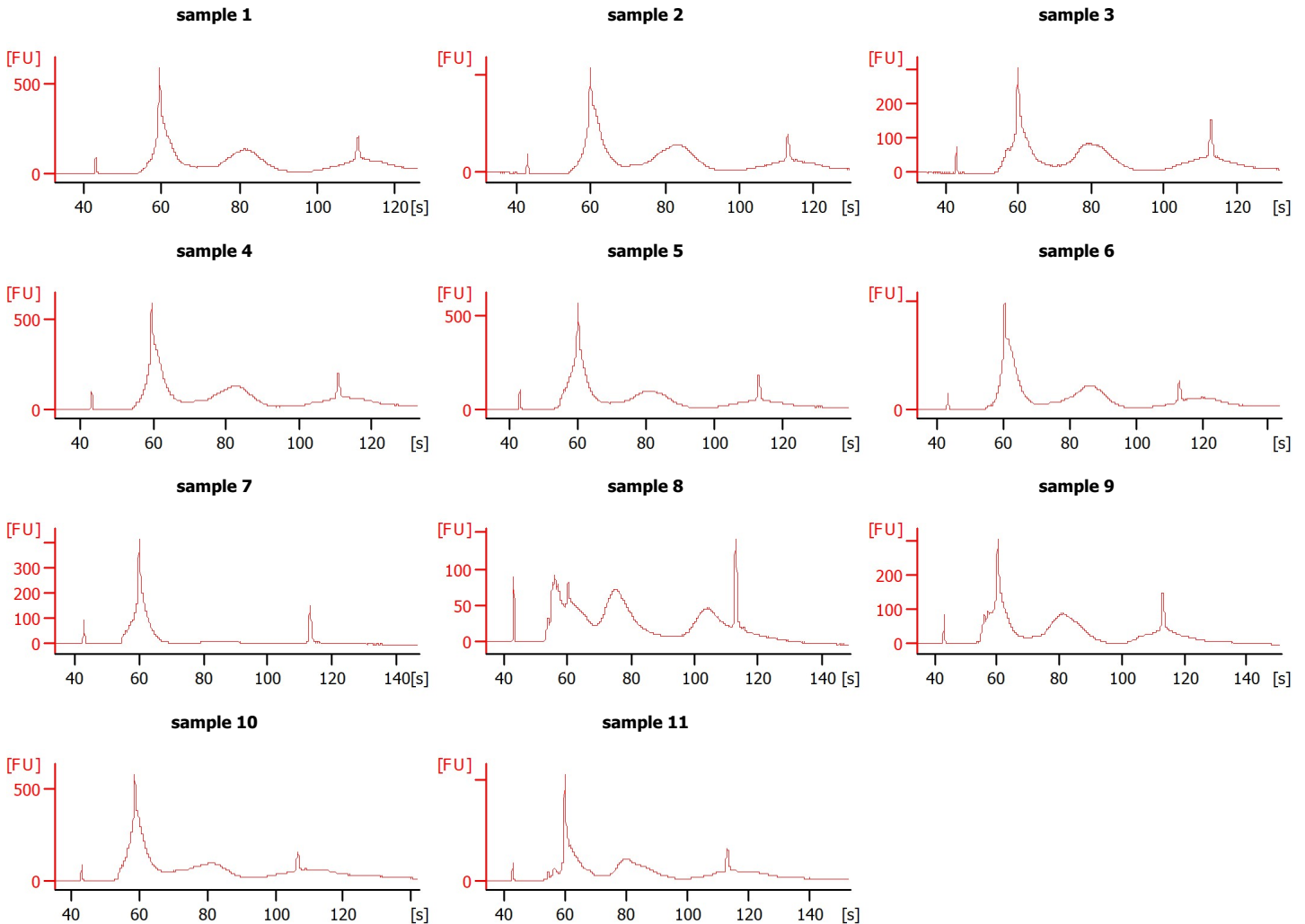
Instrument Name: DE34903152      Firmware: C.01.069  
Serial#: DE34903152      Type: G2938C

Assay Information:

Assay Origin Path: C:\Program Files (x86)\Agilent\2100 bioanalyzer\2100 expert\assays\dsDNA\High Sensitivity DNA.xsy  
Assay Class: High Sensitivity DNA Assay  
Version: 1.03  
Assay Comments: Copyright © 2003-2010 Agilent Technologies

Chip Information:

Chip Lot #:  
Reagent Kit Lot #:  
Chip Comments:



Assay Class: High Sensitivity DNA Assay  
 Data Path: Z:\...\Bioanalyzer1\_High Sensitivity DNA Assay\_2019-12-09\_002.xad

Created: 12/9/2019 3:20:12 PM  
 Modified: 12/9/2019 4:00:41 PM

**Electrophoresis File Run Summary (Chip Summary)**

Sample Name	Sample Comment	Rest. Digest	Status	Observation	Result Label	Result Color
sample 1		<input type="checkbox"/>	✓			
sample 2		<input type="checkbox"/>	✓			
sample 3		<input type="checkbox"/>	✓			
sample 4		<input type="checkbox"/>	✓			
sample 5		<input type="checkbox"/>	✓			
sample 6		<input type="checkbox"/>	✓			
sample 7		<input type="checkbox"/>	✓			
sample 8		<input type="checkbox"/>	✓			
sample 9		<input type="checkbox"/>	✓			
sample 10		<input type="checkbox"/>	✓			
sample 11		<input type="checkbox"/>	✓			
Ladder		<input type="checkbox"/>	✓			

**Chip Lot #**

**Reagent Kit Lot #**

**Chip Comments :**

Assay Class: High Sensitivity DNA Assay  
 Data Path: Z:\...\Bioanalyzer1\_High Sensitivity DNA Assay\_2019-12-09\_002.xad

Created: 12/9/2019 3:20:12 PM  
 Modified: 12/9/2019 4:00:41 PM

**Electrophoresis Assay Details**

**General Analysis Settings**

Number of Available Sample and Ladder Wells (Max.) : 12  
 Minimum Visible Range [s] : 32  
 Maximum Visible Range [s] : 138  
 Start Analysis Time Range [s] : 33  
 End Analysis Time Range [s] : 137.5  
 Ladder Concentration [pg/μl] : 1950  
 Uses Standard Area for Ladder Fragments  
 Lower Marker Concentration [pg/μl] : 125  
 Upper Marker Concentration [pg/μl] : 75  
 Used Upper Marker for Quantitation  
 Standard Curve Fit is Point to Point  
 Show Data Aligned to Lower and Upper Marker

**Integrator Settings**

Integration Start Time [s] : 33.05  
 Integration End Time [s] : 137  
 Slope Threshold : 0.8  
 Height Threshold [FU] : 5  
 Area Threshold : 0.1  
 Width Threshold [s] : 0.6  
 Baseline Plateau [s] : 0.5

**Filter Settings**

Filter Width [s] : 0.5  
 Polynomial Order : 4

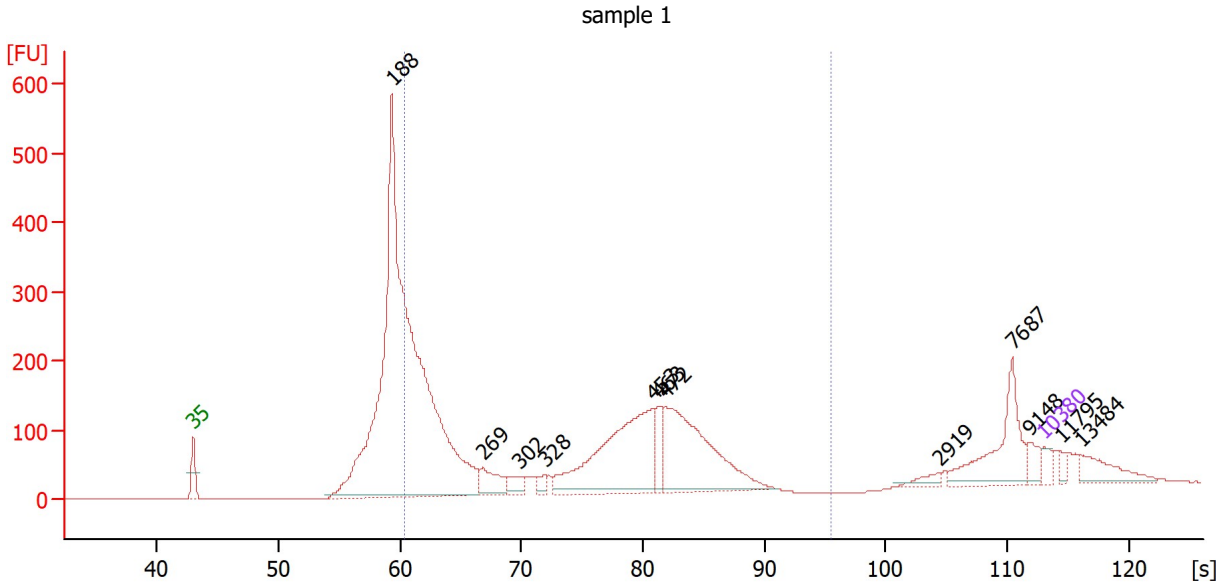
**Ladder**

Ladder Peak	Size	Area
1	35	160
2	50	210
3	100	208
4	150	221
5	200	242
6	300	270
7	400	305
8	500	306
9	600	336
10	700	321
11	1000	366
12	2000	413
13	3000	411
14	7000	400
15	10380	214

Assay Class: High Sensitivity DNA Assay  
 Data Path: Z:\...\Bioanalyzer1\_High Sensitivity DNA Assay\_2019-12-09\_002.xad

Created: 12/9/2019 3:20:12 PM  
 Modified: 12/9/2019 4:00:41 PM

**Electropherogram Summary**



**Overall Results for sample 1 : sample 1**

Number of peaks found: 12                      Corr. Area 1: 2,961.6  
 Noise: 0.2

**Peak table for sample 1 : sample 1**

Peak	Size [bp]	Conc. [pg/μl]	Molarity [pmol/l]	Observations
1	35	125.00	5,411.3	Lower Marker
2	188	9,423.80	75,817.0	
3	269	317.52	1,788.6	
4	302	167.05	838.7	
5	328	87.80	405.9	
6	453	1,859.33	6,213.5	
7	463	270.00	882.7	
8	472	1,654.60	5,312.4	
9	2,919	73.25	38.0	
10	7,687	642.50	126.6	
11	9,148	107.52	17.8	
12	10,380	75.00	10.9	Upper Marker
13	11,795	0.00	0.0	
14	13,484	0.00	0.0	

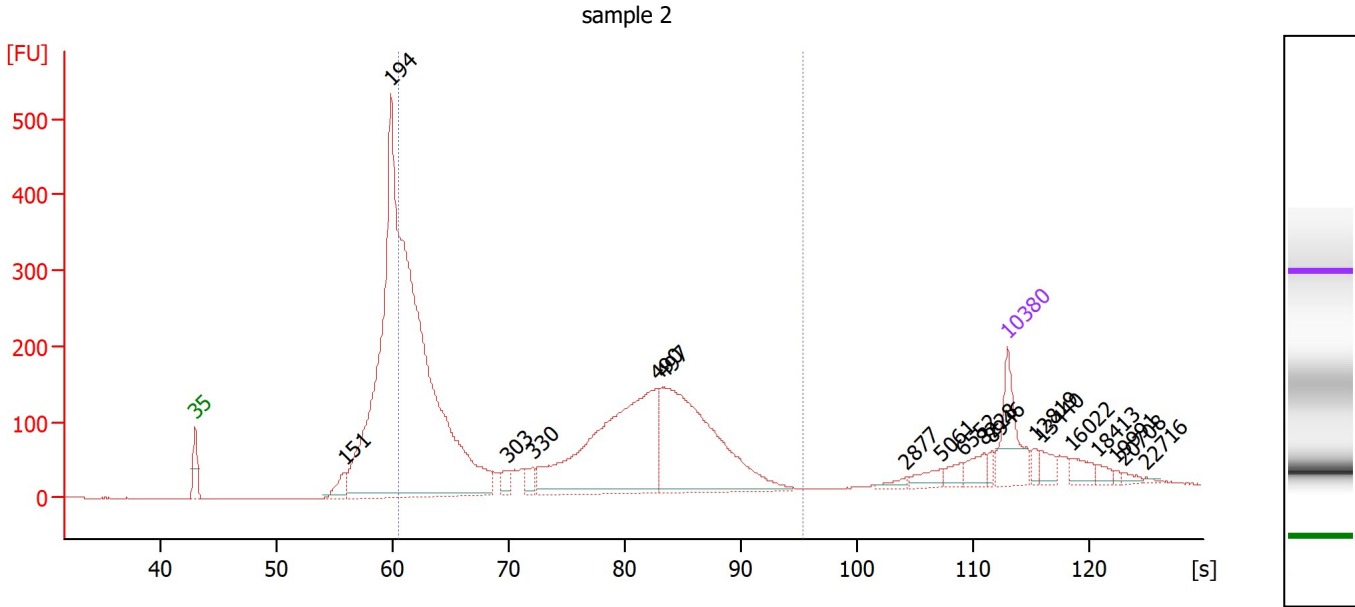
**Region table for sample 1 : sample 1**

From [s]	To [s]	Corr. Area	% of Total	Average Size [bp]	Size distribution in CV [%]	Conc. [pg/μl]	Molarity [pmol/l]	Color
60.45	95.41	2,961.6	56	365	34.4	7,874.64	40,007.9	Blue

Assay Class: High Sensitivity DNA Assay  
 Data Path: Z:\...\Bioanalyzer1\_High Sensitivity DNA Assay\_2019-12-09\_002.xad

Created: 12/9/2019 3:20:12 PM  
 Modified: 12/9/2019 4:00:41 PM

**Electropherogram Summary Continued ...**



**Overall Results for sample 2 : sample 2**

Number of peaks found: 18                      Corr. Area 1: 3,973.6  
 Noise: 0.3

**Peak table for sample 2 : sample 2**

Peak	Size [bp]	Conc. [pg/μl]	Molarity [pmol/l]	Observations
1	35	125.00	5,411.3	Lower Marker
2	151	39.40	396.6	
3	194	1,939.17	15,174.3	
4	303	18.60	93.1	
5	330	23.54	107.9	
6	490	478.21	1,477.4	
7	497	421.59	1,285.5	
8	2,877	7.77	4.1	
9	5,061	18.63	5.6	
10	6,552	15.11	3.5	
11	8,228	22.80	4.2	
12	8,946	8.12	1.4	
13	10,380	75.00	10.9	Upper Marker
14	12,819	0.00	0.0	
15	13,440	0.00	0.0	
16	16,022	0.00	0.0	
17	18,413	0.00	0.0	
18	19,991	0.00	0.0	
19	20,708	0.00	0.0	
20	22,716	0.00	0.0	

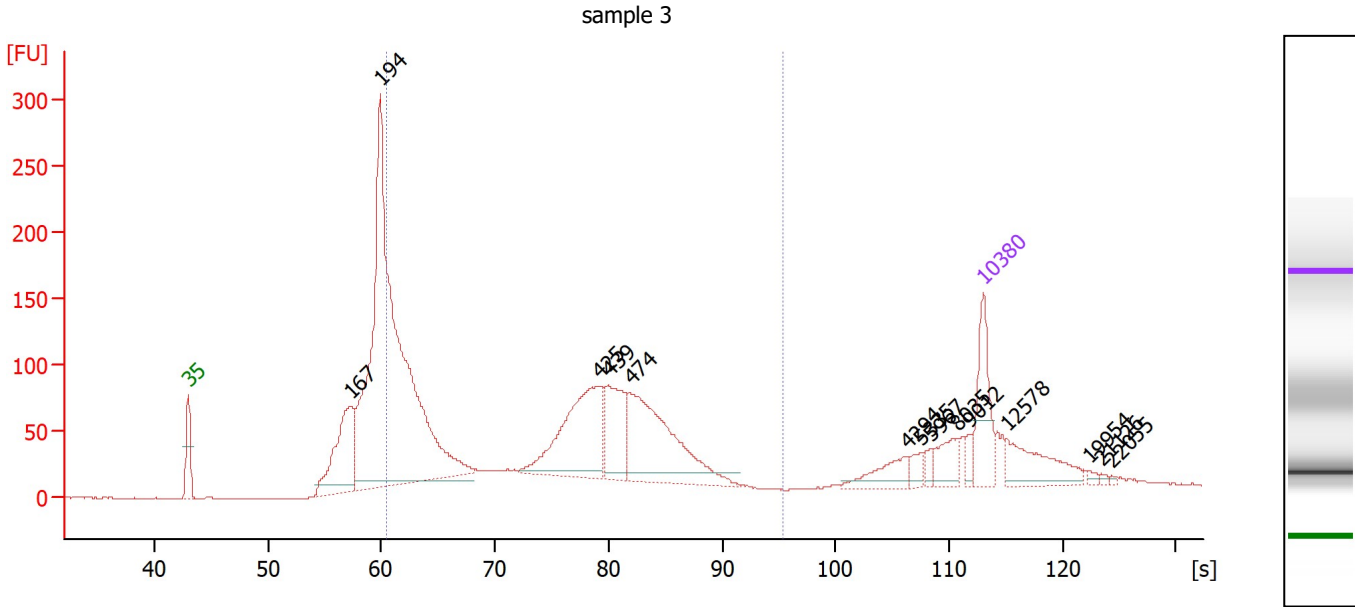
**Region table for sample 2 : sample 2**

From [s]	To [s]	Corr. Area	% of Total	Average Size [bp]	Size distribution in CV [%]	Conc. [pg/μl]	Molarity [pmol/l]	Color
60.45	95.41	3,973.6	67	380	39.0	1,956.11	9,916.6	Blue

Assay Class: High Sensitivity DNA Assay  
 Data Path: Z:\...\Bioanalyzer1\_High Sensitivity DNA Assay\_2019-12-09\_002.xad

Created: 12/9/2019 3:20:12 PM  
 Modified: 12/9/2019 4:00:41 PM

**Electropherogram Summary Continued ...**



**Overall Results for sample 3 : sample 3**

Number of peaks found: 14      Corr. Area 1: 2,053.9  
 Noise: 0.3

**Peak table for sample 3 : sample 3**

Peak	Size [bp]	Conc. [pg/μl]	Molarity [pmol/l]	Observations
1	35	125.00	5,411.3	Lower Marker
2	167	203.92	1,850.5	
3	194	1,174.78	9,176.2	
4	425	235.31	838.2	
5	439	111.52	384.5	
6	474	260.63	832.9	
7	4,294	40.18	14.2	
8	5,335	14.29	4.1	
9	5,967	10.91	2.8	
10	8,035	35.33	6.7	
11	9,012	10.83	1.8	
12	10,380	75.00	10.9	Upper Marker
13	12,578	0.00	0.0	
14	19,954	0.00	0.0	
15	21,126	0.00	0.0	
16	22,055	0.00	0.0	

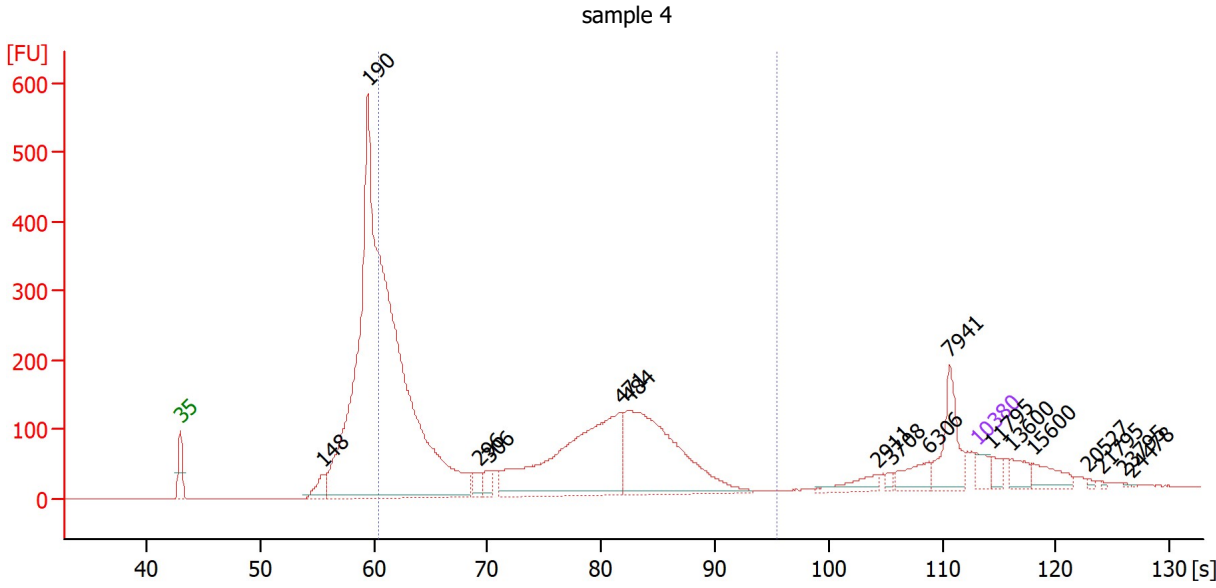
**Region table for sample 3 : sample 3**

From [s]	To [s]	Corr. Area	% of Total	Average Size [bp]	Size distribution in CV [%]	Conc. [pg/μl]	Molarity [pmol/l]	Color
60.45	95.41	2,053.9	60	374	34.2	1,519.45	7,486.1	Blue

Assay Class: High Sensitivity DNA Assay  
 Data Path: Z:\...\Bioanalyzer1\_High Sensitivity DNA Assay\_2019-12-09\_002.xad

Created: 12/9/2019 3:20:12 PM  
 Modified: 12/9/2019 4:00:41 PM

**Electropherogram Summary Continued ...**



**Overall Results for sample 4 : sample 4**

Number of peaks found: 17      Corr. Area 1: 3,583.8  
 Noise: 0.3

**Peak table for sample 4 : sample 4**

Peak	Size [bp]	Conc. [pg/μl]	Molarity [pmol/l]	Observations
1	35	125.00	5,411.3	Lower Marker
2	148	146.14	1,493.2	
3	190	7,452.98	59,515.1	
4	296	84.75	433.9	
5	306	77.64	384.5	
6	471	1,538.68	4,952.8	
7	484	1,387.52	4,344.5	
8	2,911	87.76	45.7	
9	3,708	21.88	8.9	
10	6,306	126.23	30.3	
11	7,941	287.34	54.8	
12	10,380	75.00	10.9	Upper Marker
13	11,795	0.00	0.0	
14	13,600	0.00	0.0	
15	15,600	0.00	0.0	
16	20,527	0.00	0.0	
17	21,795	0.00	0.0	
18	23,795	0.00	0.0	
19	24,478	0.00	0.0	

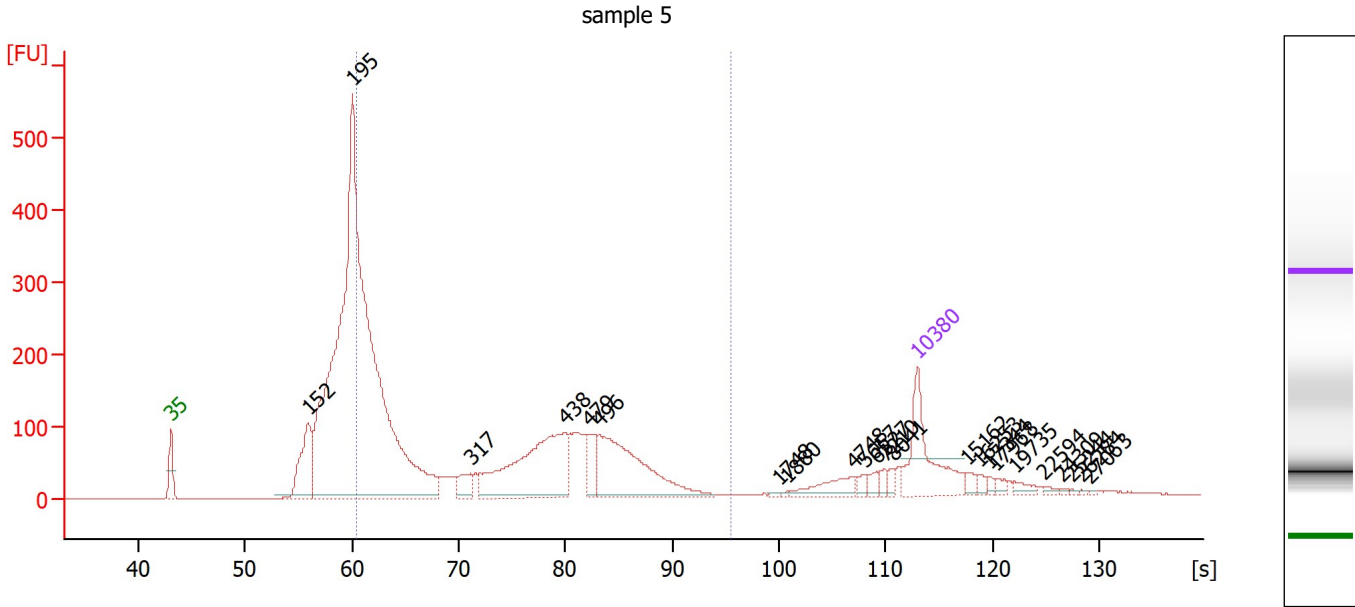
**Region table for sample 4 : sample 4**

From [s]	To [s]	Corr. Area	% of Total	Average Size [bp]	Size distribution in CV [%]	Conc. [pg/μl]	Molarity [pmol/l]	Color
60.45	95.41	3,583.8	58	365	37.6	6,460.47	33,306.0	■

Assay Class: High Sensitivity DNA Assay  
 Data Path: Z:\...\Bioanalyzer1\_High Sensitivity DNA Assay\_2019-12-09\_002.xad

Created: 12/9/2019 3:20:12 PM  
 Modified: 12/9/2019 4:00:41 PM

**Electropherogram Summary Continued ...**



**Overall Results for sample 5 : sample 5**

Number of peaks found: 23                      Corr. Area 1: 3,057.1  
 Noise: 0.3

**Peak table for sample 5 : sample 5**

Peak	Size [bp]	Conc. [pg/μl]	Molarity [pmol/l]	Observations
1	35	125.00	5,411.3	Lower Marker
2	152	107.43	1,073.3	
3	195	1,357.03	10,528.4	
4	317	24.09	115.0	
5	438	207.34	717.8	
6	479	31.75	100.4	
7	496	169.02	516.7	
8	1,748	1.44	1.2	
9	1,880	1.00	0.8	
10	4,748	24.20	7.7	
11	5,657	5.95	1.6	
12	6,527	8.82	2.0	
13	7,210	6.14	1.3	
14	8,041	5.49	1.0	
15	10,380	75.00	10.9	Upper Marker
16	15,162	0.00	0.0	
17	16,253	0.00	0.0	
18	17,344	0.00	0.0	
19	17,968	0.00	0.0	
20	19,735	0.00	0.0	
21	22,594	0.00	0.0	
22	24,309	0.00	0.0	
23	25,244	0.00	0.0	
24	26,284	0.00	0.0	
25	27,063	0.00	0.0	




Assay Class: High Sensitivity DNA Assay  
 Data Path: Z:\...\Bioanalyzer1\_High Sensitivity DNA Assay\_2019-12-09\_002.xad

Created: 12/9/2019 3:20:12 PM  
 Modified: 12/9/2019 4:00:41 PM

**Electropherogram Summary Continued ...**

... Region table for sample 5 :

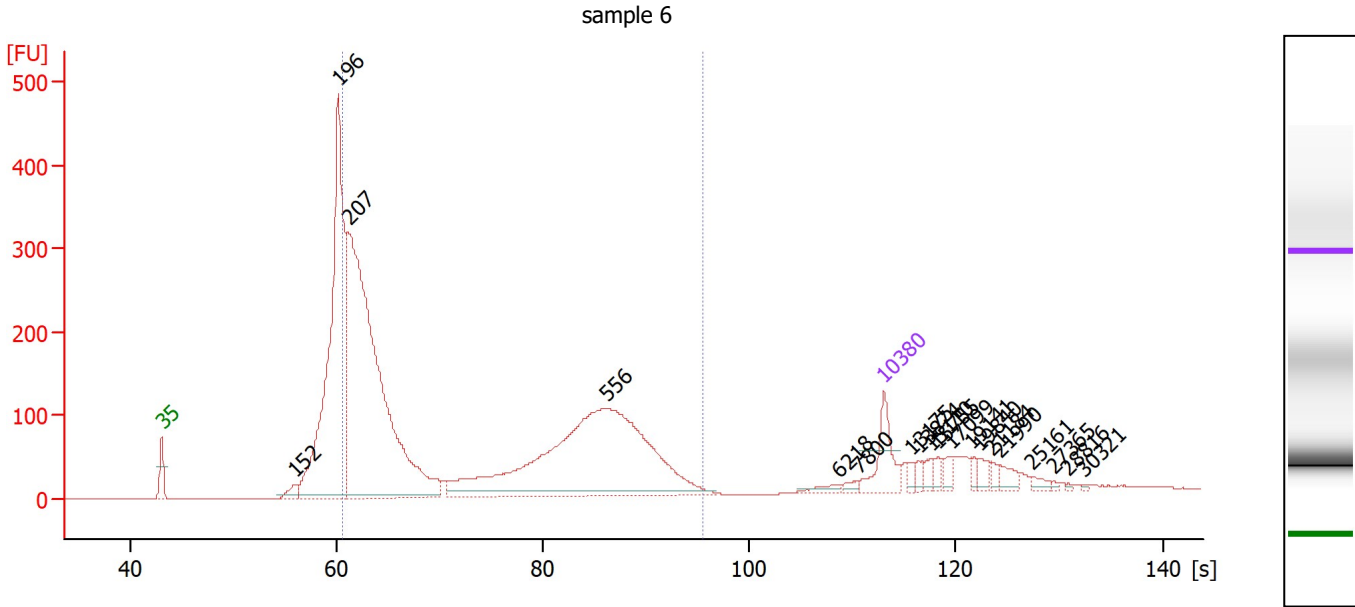
sample 5

From [s]	To [s]	Corr. Area	% of Total	Average Size [bp]	Size distribution in CV [%]	Conc. [pg/μl]	Molarity [pmol/l]	Color
60.45	95.41	3,057.1	56	359	38.9	1,119.51	5,859.9	

Assay Class: High Sensitivity DNA Assay  
 Data Path: Z:\...\Bioanalyzer1\_High Sensitivity DNA Assay\_2019-12-09\_002.xad

Created: 12/9/2019 3:20:12 PM  
 Modified: 12/9/2019 4:00:41 PM

**Electropherogram Summary Continued ...**



**Overall Results for sample 6 : sample 6**

Number of peaks found: 19      Corr. Area 1: 3,512.7  
 Noise: 0.2

**Peak table for sample 6 : sample 6**

Peak	Size [bp]	Conc. [pg/μl]	Molarity [pmol/l]	Observations
1	35	125.00	5,411.3	Lower Marker
2	152	31.04	309.6	
3	196	1,095.95	8,451.0	
4	207	1,553.52	11,364.5	
5	556	930.72	2,535.2	
6	6,218	13.37	3.3	
7	7,800	8.93	1.7	
8	10,380	75.00	10.9	Upper Marker
9	13,175	0.00	0.0	
10	13,874	0.00	0.0	
11	15,110	0.00	0.0	
12	15,755	0.00	0.0	
13	17,099	0.00	0.0	
14	19,141	0.00	0.0	
15	19,840	0.00	0.0	
16	21,184	0.00	0.0	
17	21,990	0.00	0.0	
18	25,161	0.00	0.0	
19	27,365	0.00	0.0	
20	28,816	0.00	0.0	
21	30,321	0.00	0.0	

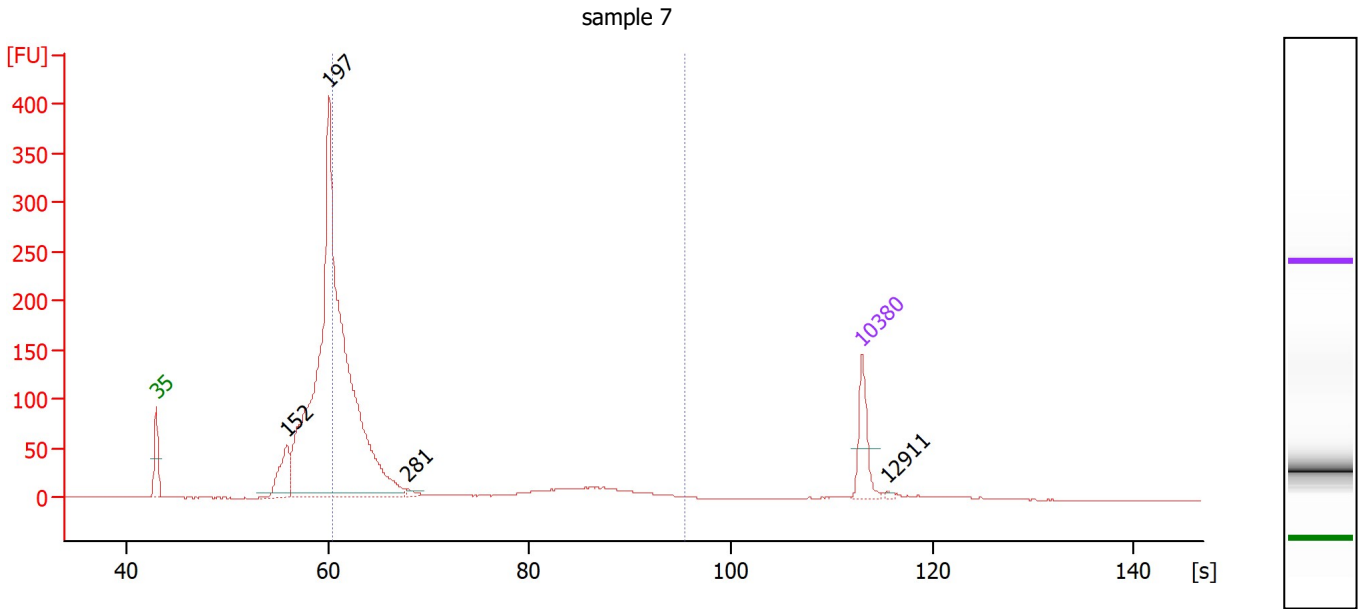
**Region table for sample 6 : sample 6**

From [s]	To [s]	Corr. Area	% of Total	Average Size [bp]	Size distribution in CV [%]	Conc. [pg/μl]	Molarity [pmol/l]	Color
60.45	95.41	3,512.7	70	377	46.7	2,617.78	14,001.0	Blue

Assay Class: High Sensitivity DNA Assay  
 Data Path: Z:\...\Bioanalyzer1\_High Sensitivity DNA Assay\_2019-12-09\_002.xad

Created: 12/9/2019 3:20:12 PM  
 Modified: 12/9/2019 4:00:41 PM

**Electropherogram Summary Continued ...**



**Overall Results for sample 7 : sample 7**

Number of peaks found: 4                      Corr. Area 1: 1,151.7  
 Noise: 0.2

**Peak table for sample 7 : sample 7**

Peak	Size [bp]	Conc. [pg/μl]	Molarity [pmol/l]	Observations
1	35	125.00	5,411.3	Lower Marker
2	152	135.82	1,351.1	
3	197	2,083.17	16,036.7	
4	281	10.49	56.5	
5	10,380	75.00	10.9	Upper Marker
6	12,911	0.00	0.0	

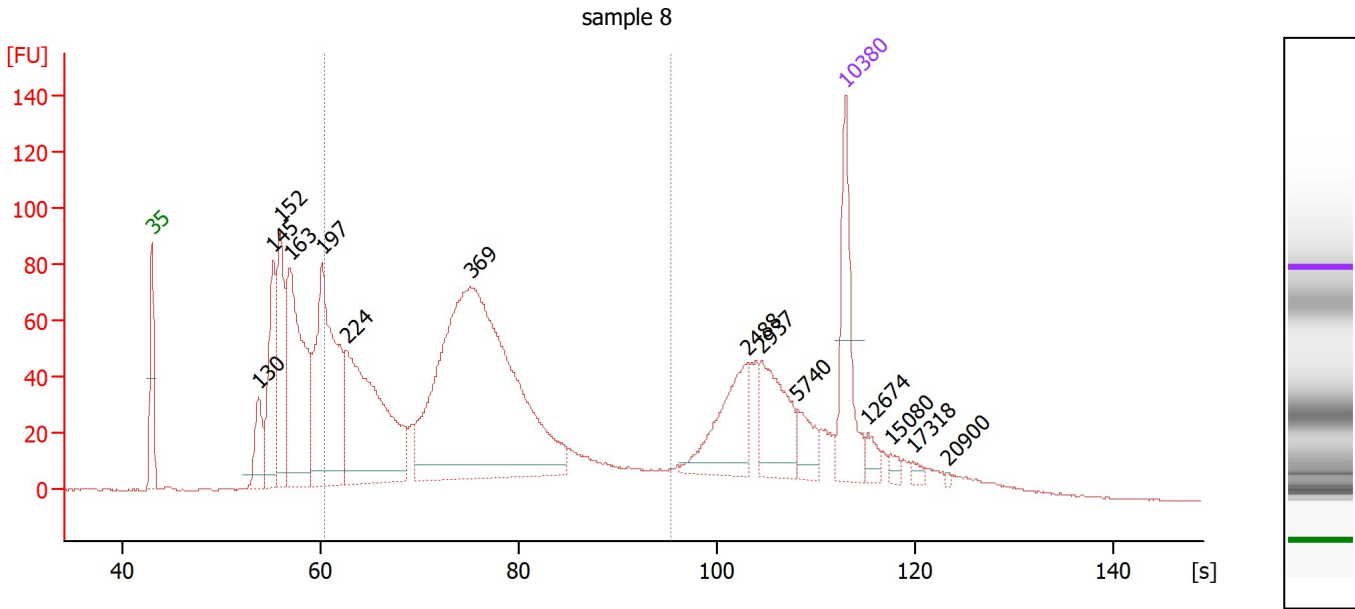
**Region table for sample 7 : sample 7**

From [s]	To [s]	Corr. Area	% of Total	Average Size [bp]	Size distribution in CV [%]	Conc. [pg/μl]	Molarity [pmol/l]	Color
60.45	95.41	1,151.7	50	289	50.6	1,177.35	7,432.4	Blue

Assay Class: High Sensitivity DNA Assay  
 Data Path: Z:\...\Bioanalyzer1\_High Sensitivity DNA Assay\_2019-12-09\_002.xad

Created: 12/9/2019 3:20:12 PM  
 Modified: 12/9/2019 4:00:41 PM

**Electropherogram Summary Continued ...**



**Overall Results for sample 8 : sample 8**

Number of peaks found: 14      Corr. Area 1: 1,577.1  
 Noise: 0.2

**Peak table for sample 8 : sample 8**

Peak	Size [bp]	Conc. [pg/μl]	Molarity [pmol/l]	Observations
1	35	125.00	5,411.3	Lower Marker
2	130	58.32	681.7	
3	145	132.47	1,384.8	
4	152	136.27	1,355.3	
5	163	268.35	2,499.6	
6	197	288.93	2,221.7	
7	224	299.31	2,024.7	
8	369	616.14	2,531.6	
9	2,488	72.84	44.4	
10	2,937	66.13	34.1	
11	5,740	24.60	6.5	
12	10,380	75.00	10.9	Upper Marker
13	12,674	0.00	0.0	
14	15,080	0.00	0.0	
15	17,318	0.00	0.0	
16	20,900	0.00	0.0	

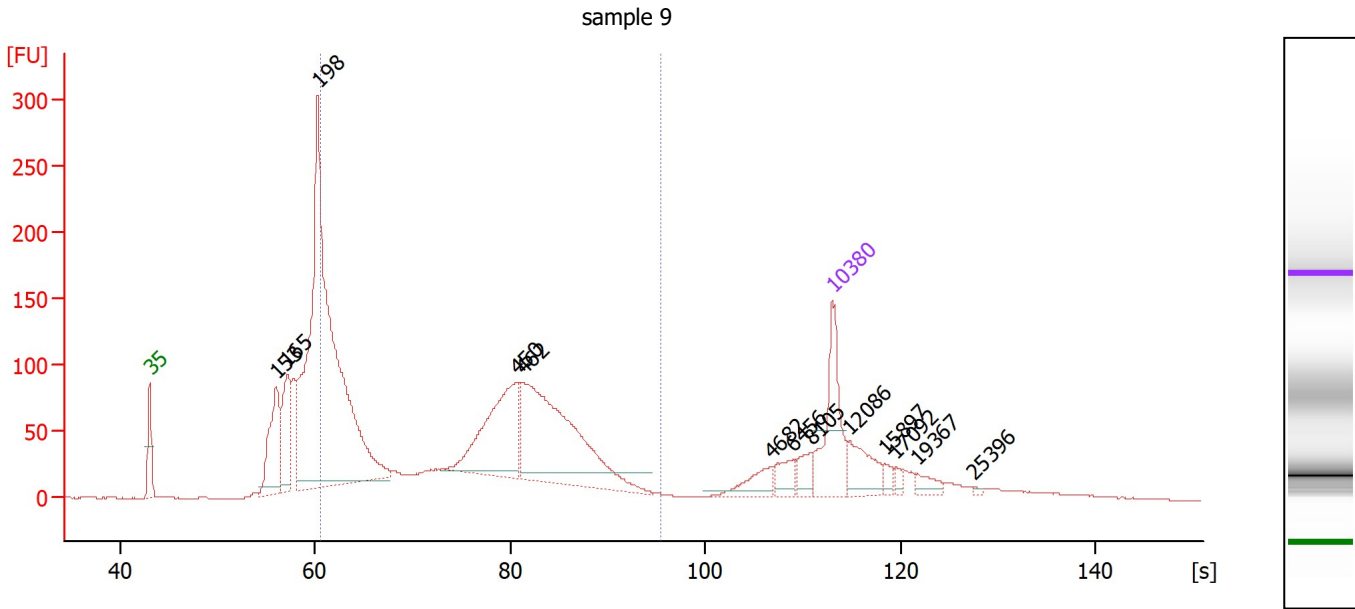
**Region table for sample 8 : sample 8**

From [s]	To [s]	Corr. Area	% of Total	Average Size [bp]	Size distribution in CV [%]	Conc. [pg/μl]	Molarity [pmol/l]	Color
60.45	95.41	1,577.1	53	371	36.8	1,283.23	6,125.1	Blue

Assay Class: High Sensitivity DNA Assay  
 Data Path: Z:\...\Bioanalyzer1\_High Sensitivity DNA Assay\_2019-12-09\_002.xad

Created: 12/9/2019 3:20:12 PM  
 Modified: 12/9/2019 4:00:41 PM

**Electropherogram Summary Continued ...**



**Overall Results for sample 9 : sample 9**

Number of peaks found: 13                      Corr. Area 1: 2,246.8  
 Noise: 0.2

**Peak table for sample 9 : sample 9**

Peak	Size [bp]	Conc. [pg/μl]	Molarity [pmol/l]	Observations
1	35	125.00	5,411.3	Lower Marker
2	153	123.77	1,226.8	
3	165	99.57	917.0	
4	198	835.81	6,405.1	
5	450	172.15	579.3	
6	462	294.72	966.9	
7	4,682	25.83	8.4	
8	6,456	20.34	4.8	
9	8,105	18.18	3.4	
10	10,380	75.00	10.9	Upper Marker
11	12,086	0.00	0.0	
12	15,897	0.00	0.0	
13	17,092	0.00	0.0	
14	19,367	0.00	0.0	
15	25,396	0.00	0.0	

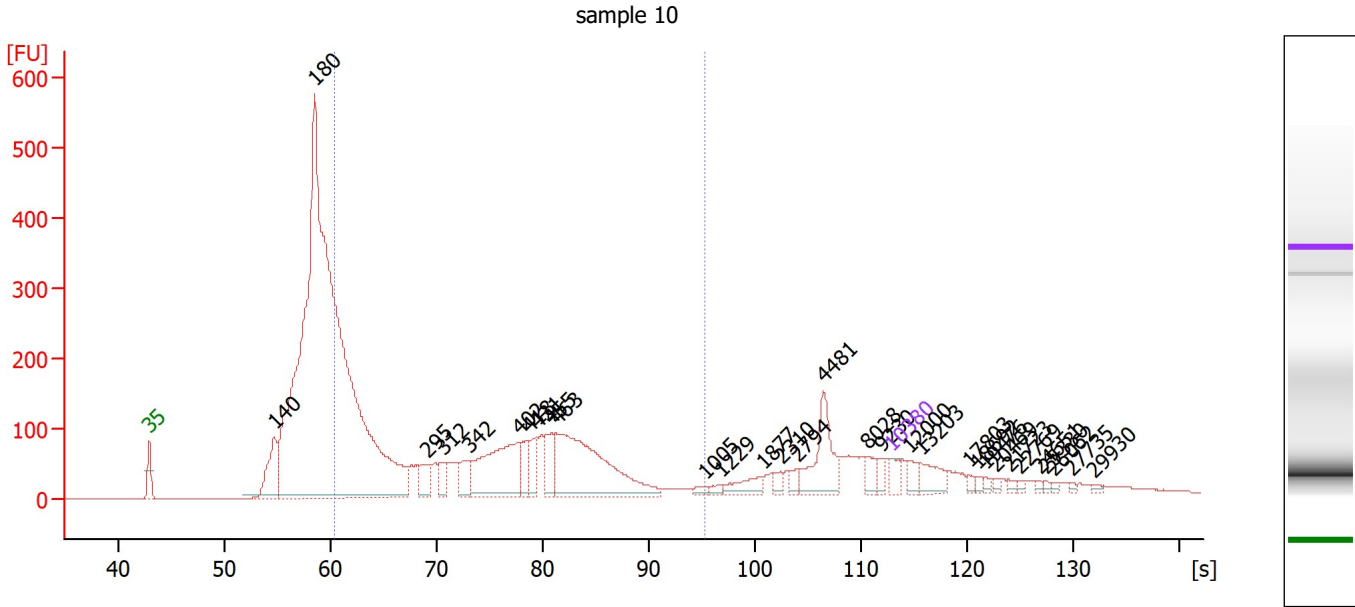
**Region table for sample 9 : sample 9**

From [s]	To [s]	Corr. Area	% of Total	Average Size [bp]	Size distribution in CV [%]	Conc. [pg/μl]	Molarity [pmol/l]	Color
60.45	95.41	2,246.8	60	393	38.0	1,263.09	6,123.3	Blue

Assay Class: High Sensitivity DNA Assay  
 Data Path: Z:\...\Bioanalyzer1\_High Sensitivity DNA Assay\_2019-12-09\_002.xad

Created: 12/9/2019 3:20:12 PM  
 Modified: 12/9/2019 4:00:41 PM

**Electropherogram Summary Continued ...**



**Overall Results for sample 10 : sample 10**

Number of peaks found: 31                      Corr. Area 1: 3,106.2  
 Noise: 0.2

**Peak table for sample 10 : sample 10**

Peak	Size [bp]	Conc. [pg/μl]	Molarity [pmol/l]	Observations
1	35	125.00	5,411.3	Lower Marker
2	140	563.62	6,090.4	
3	180	11,400.26	95,817.2	
4	295	186.36	957.3	
5	312	141.70	688.3	
6	342	164.37	727.6	
7	402	872.77	3,292.9	
8	418	184.06	666.6	
9	431	167.33	588.6	
10	455	214.31	712.9	
11	463	1,384.16	4,525.3	
12	1,005	33.04	49.8	
13	1,229	34.73	42.8	
14	1,877	124.05	100.1	
15	2,310	44.59	29.3	
16	2,794	51.85	28.1	
17	4,481	392.62	132.8	
18	8,028	87.73	16.6	
19	9,230	56.48	9.3	
20	10,380	75.00	10.9	Upper Marker
21	12,000	0.00	0.0	
22	13,203	0.00	0.0	
23	17,803	0.00	0.0	
24	18,692	0.00	0.0	
25	19,476	0.00	0.0	
26	20,469	0.00	0.0	

Assay Class: High Sensitivity DNA Assay  
 Data Path: Z:\...\Bioanalyzer1\_High Sensitivity DNA Assay\_2019-12-09\_002.xad


Created: 12/9/2019 3:20:12 PM  
 Modified: 12/9/2019 4:00:41 PM

**Electropherogram Summary Continued ...**

**... Peak table for sample 10 : sample 10**

Peak	Size [bp]	Conc. [pg/μl]	Molarity [pmol/l]	Observations
27	21,723	0.00	0.0	
28	22,769	0.00	0.0	
29	24,651	0.00	0.0	
30	25,330	0.00	0.0	
31	26,062	0.00	0.0	
32	27,735	0.00	0.0	
33	29,930	0.00	0.0	

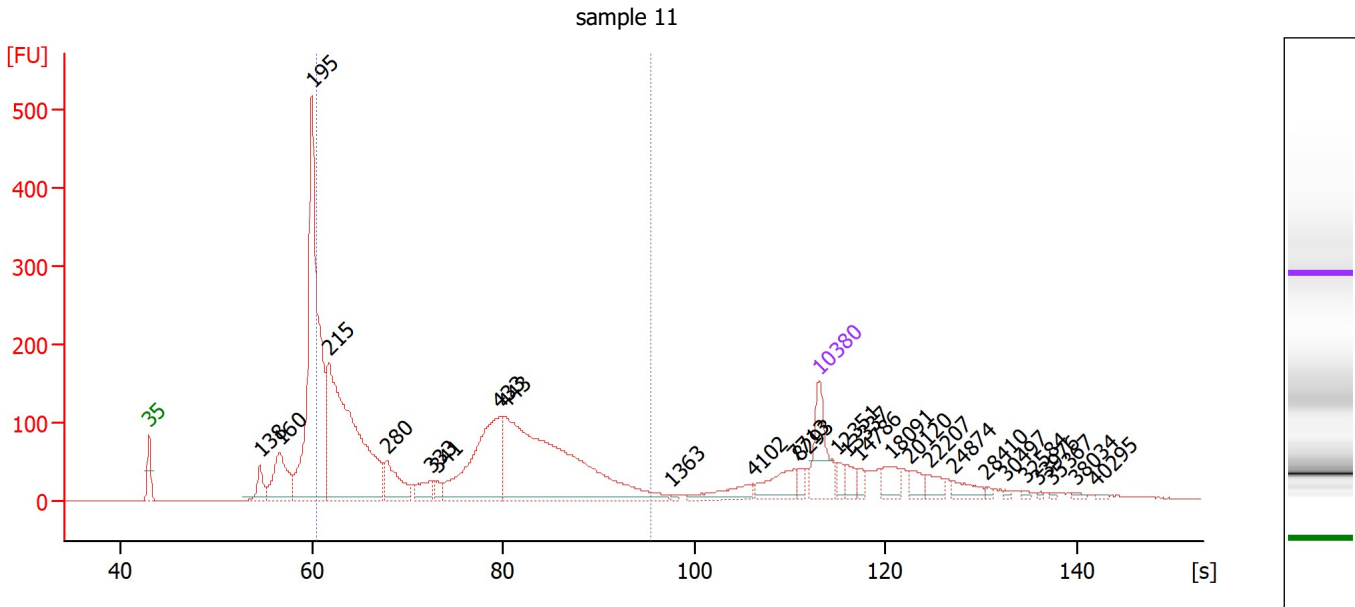
**Region table for sample 10 : sample 10**

From [s]	To [s]	Corr. Area % of Total	Average Size [bp]	Size distribution in CV [%]	Conc. [pg/μl]	Molarity [pmol/l]	Color	
60.45	95.41	3,106.2	45	363	38.7	7,540.67	38,423.0	

Assay Class: High Sensitivity DNA Assay  
 Data Path: Z:\...\Bioanalyzer1\_High Sensitivity DNA Assay\_2019-12-09\_002.xad

Created: 12/9/2019 3:20:12 PM  
 Modified: 12/9/2019 4:00:41 PM

**Electropherogram Summary Continued ...**



**Overall Results for sample 11 : sample 11**

Number of peaks found: 27                      Corr. Area 1: 2,942.6  
 Noise: 0.2

**Peak table for sample 11 : sample 11**

Peak	Size [bp]	Conc. [pg/μl]	Molarity [pmol/l]	Observations
1	35	125.00	5,411.3	Lower Marker
2	138	45.01	494.9	
3	160	135.64	1,287.2	
4	195	720.40	5,589.3	
5	215	633.99	4,475.4	
6	280	82.10	443.7	
7	333	35.06	159.3	
8	341	16.53	73.4	
9	433	253.53	886.1	
10	443	543.90	1,859.0	
11	1,363	2.20	2.5	
12	4,102	30.75	11.4	
13	7,713	46.24	9.1	
14	8,293	10.85	2.0	
15	10,380	75.00	10.9	Upper Marker
16	12,351	0.00	0.0	
17	13,337	0.00	0.0	
18	14,786	0.00	0.0	
19	18,091	0.00	0.0	
20	20,120	0.00	0.0	
21	22,207	0.00	0.0	
22	24,874	0.00	0.0	
23	28,410	0.00	0.0	
24	30,497	0.00	0.0	
25	32,584	0.00	0.0	
26	33,976	0.00	0.0	



Assay Class: High Sensitivity DNA Assay  
 Data Path: Z:\...\Bioanalyzer1\_High Sensitivity DNA Assay\_2019-12-09\_002.xad


Created: 12/9/2019 3:20:12 PM  
 Modified: 12/9/2019 4:00:41 PM

**Electropherogram Summary Continued ...**

**... Peak table for sample 11 : sample 11**

Peak	Size [bp]	Conc. [pg/μl]	Molarity [pmol/l]	Observations
27	35,367	0.00	0.0	
28	38,034	0.00	0.0	
29	40,295	0.00	0.0	

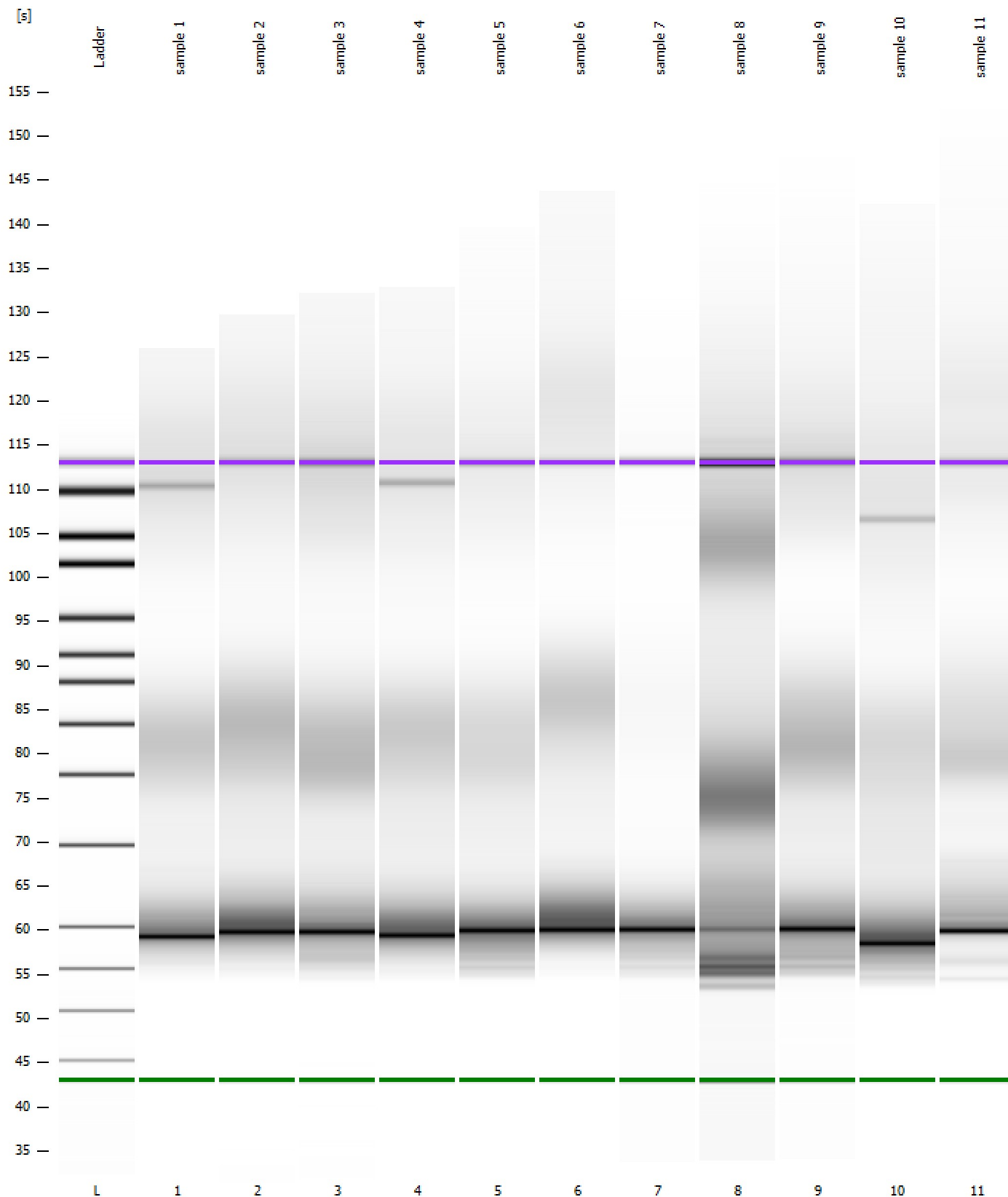
**Region table for sample 11 : sample 11**

From [s]	To [s]	Corr. Area % of Total	Average Size [bp]	Size distribution in CV [%]	Conc. [pg/μl]	Molarity [pmol/l]	Color	
60.45	95.41	2,942.6	63	385	41.2	1,726.81	8,594.3	

Assay Class: High Sensitivity DNA Assay  
Data Path: Z:\...\Bioanalyzer1\_High Sensitivity DNA Assay\_2019-12-09\_002.xad

Created: 12/9/2019 3:20:12 PM  
Modified: 12/9/2019 4:00:41 PM

**Gel Image**

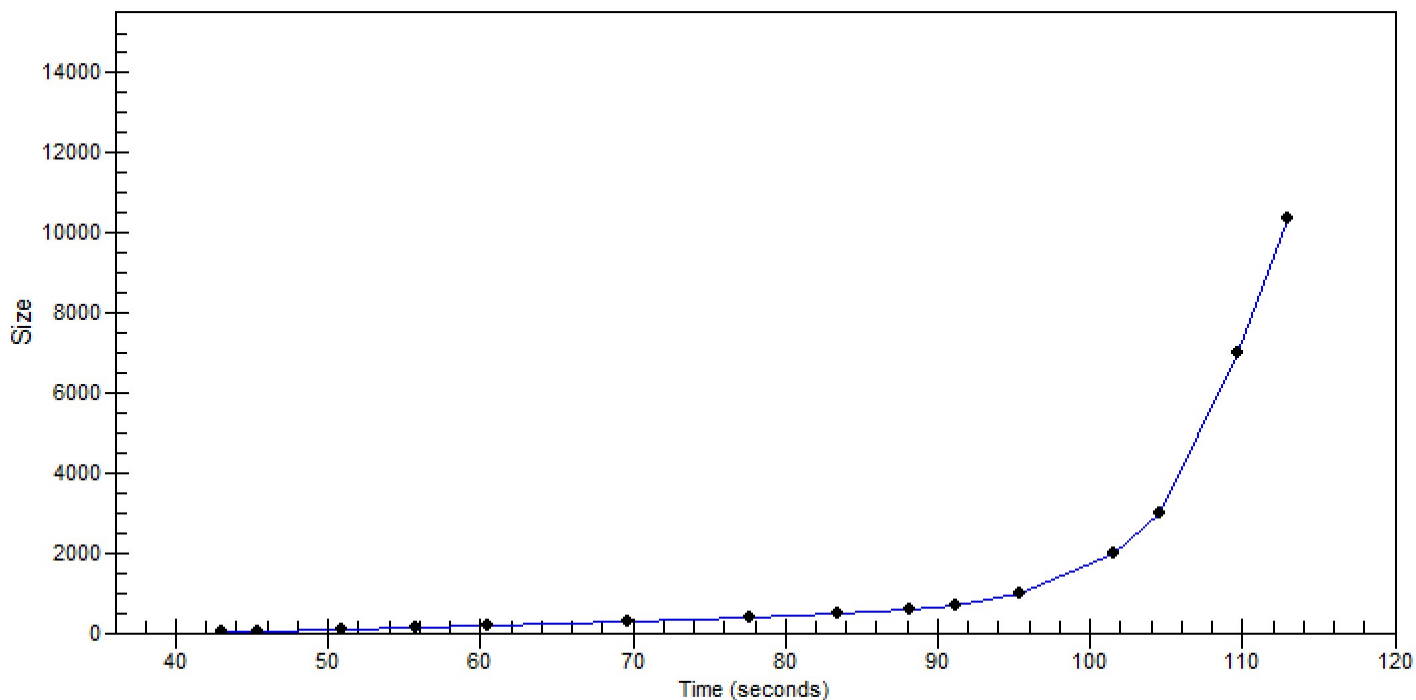


Assay Class: High Sensitivity DNA Assay  
Data Path: Z:\...\Bioanalyzer1\_High Sensitivity DNA Assay\_2019-12-09\_002.xad

Created: 12/9/2019 3:20:12 PM  
Modified: 12/9/2019 4:00:41 PM

**Curves**

**Standard Curve**



Assay Class: High Sensitivity DNA Assay Created: 12/9/2019 3:20:12 PM  
 Data Path: Z:\...\Bioanalyzer1\_High Sensitivity DNA Assay\_2019-12-09\_002.xad Modified: 12/9/2019 4:00:41 PM

**Run Logbook**

Description	Number	Source	Category	Sub Category	Time	Time Zone	User	Host
Run ended on port 1 (Number of wells acquired: 12)		Instrument	Run		12/9/2019 4:00:39 PM	(GMT --08:00) Pacific Standard Time	sbsuser	DESKTOP-4UNV VOB
Run started on port 1 (File: Z:\XADs\2019-12-09\Bioanalyze r1_High Sensitivity DNA Assay_2019-12-09_002.xad)		Instrument	Run		12/9/2019 3:20:17 PM	(GMT --08:00) Pacific Standard Time	sbsuser	DESKTOP-4UNV VOB
Product Number : G2938C		Instrument	Run		12/9/2019 3:20:17 PM	(GMT --08:00) Pacific Standard Time	sbsuser	DESKTOP-4UNV VOB
Name :		Instrument	Run		12/9/2019 3:20:17 PM	(GMT --08:00) Pacific Standard Time	sbsuser	DESKTOP-4UNV VOB
Vendor : Agilent Technologies		Instrument	Run		12/9/2019 3:20:17 PM	(GMT --08:00) Pacific Standard Time	sbsuser	DESKTOP-4UNV VOB
Serial# : DE34903152		Instrument	Run		12/9/2019 3:20:17 PM	(GMT --08:00) Pacific Standard Time	sbsuser	DESKTOP-4UNV VOB
Firmware : C.01.069		Instrument	Run		12/9/2019 3:20:17 PM	(GMT --08:00) Pacific Standard Time	sbsuser	DESKTOP-4UNV VOB
Cartridge : Electrode		Instrument	Run		12/9/2019 3:20:17 PM	(GMT --08:00) Pacific Standard Time	sbsuser	DESKTOP-4UNV VOB