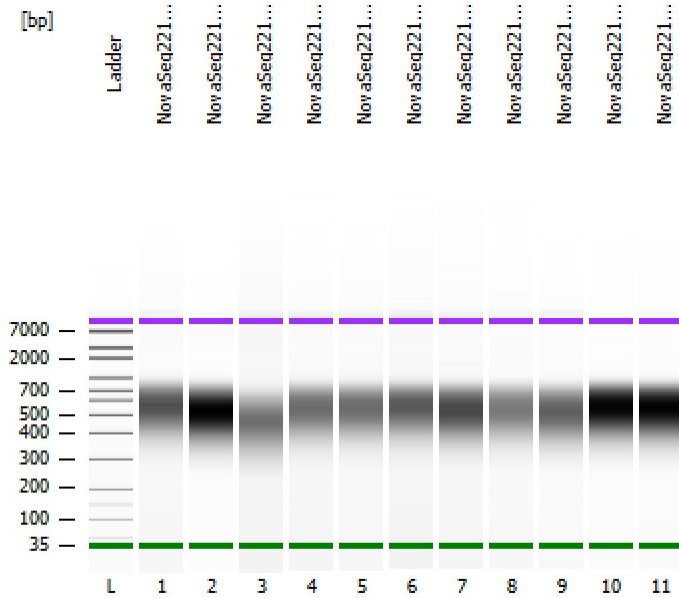


Assay Class: High Sensitivity DNA Assay
Data Path: Z:\...\Bioanalyzer1_High Sensitivity DNA Assay_2020-06-26_003.xad

Created: 6/26/2020 4:15:54 PM
Modified: 6/26/2020 5:34:14 PM

Electrophoresis File Run Summary



Instrument Information:

Instrument Name: DE34903152 Firmware: C.01.069
Serial#: DE34903152 Type: G2938C

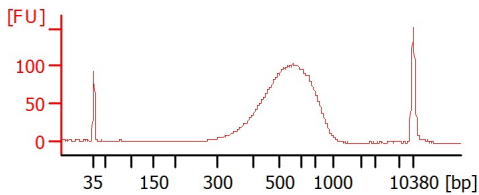
Assay Information:

Assay Origin Path: C:\Program Files (x86)\Agilent\2100 bioanalyzer\2100 expert\assays\dsDNA\High Sensitivity DNA.xsy
Assay Class: High Sensitivity DNA Assay
Version: 1.03
Assay Comments: Copyright © 2003-2010 Agilent Technologies

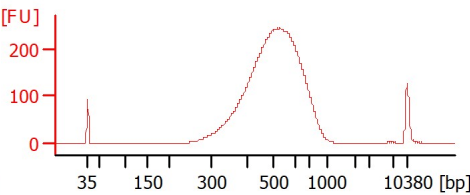
Chip Information:

Chip Lot #:
Reagent Kit Lot #:
Chip Comments:

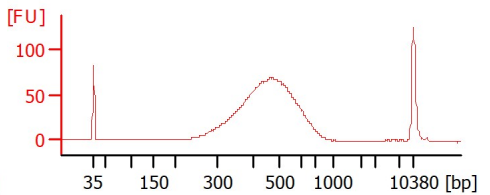
NovaSeq221-27 SS lib
0.65XL/0.55XR



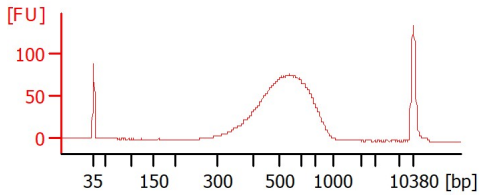
NovaSeq221-68 SS lib
0.65XL/0.55XR



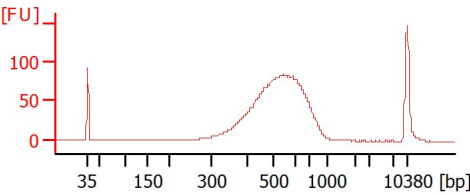
NovaSeq221-75 SS lib
0.65XL/0.55XR



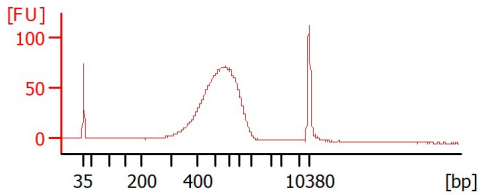
NovaSeq221-1 SS lib
0.65XL/0.55XR



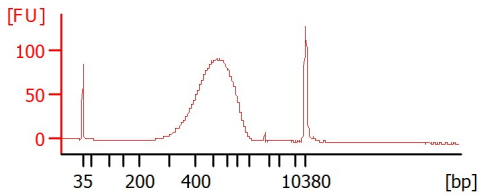
NovaSeq221-2 SS lib
0.65XL/0.55XR



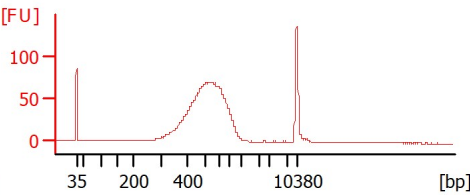
NovaSeq221-3 SS lib
0.65XL/0.55XR



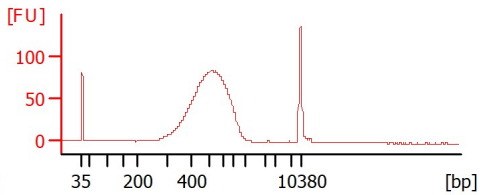
NovaSeq221-7 SS lib
0.65XL/0.55XR



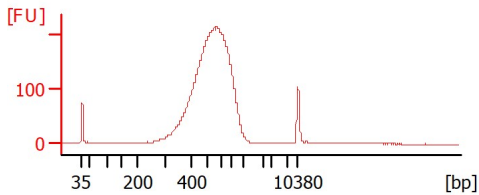
NovaSeq221-8 SS lib
0.65XL/0.55XR



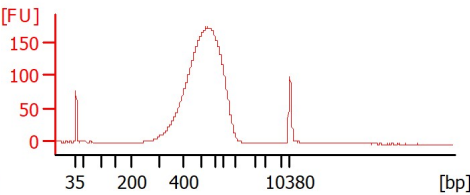
NovaSeq221-9 SS lib
0.65XL/0.55XR



NovaSeq221-16 SS lib
0.65XL/0.55XR



NovaSeq221-17 SS lib
0.65XL/0.55XR



Assay Class: High Sensitivity DNA Assay
 Data Path: Z:\...\Bioanalyzer1_High Sensitivity DNA Assay_2020-06-26_003.xad

Created: 6/26/2020 4:15:54 PM
 Modified: 6/26/2020 5:34:14 PM

Electrophoresis File Run Summary (Chip Summary)

Sample Name	Sample Comment	Rest. Digest	Status	Observation	Result Label	Result Color
NovaSeq221-27 SS lib	0.65XL/0.55XR	<input type="checkbox"/>	✓			
NovaSeq221-68 SS lib	0.65XL/0.55XR	<input type="checkbox"/>	✓			
NovaSeq221-75 SS lib	0.65XL/0.55XR	<input type="checkbox"/>	✓			
NovaSeq221-1 SS lib	0.65XL/0.55XR	<input type="checkbox"/>	✓			
NovaSeq221-2 SS lib	0.65XL/0.55XR	<input type="checkbox"/>	✓			
NovaSeq221-3 SS lib	0.65XL/0.55XR	<input type="checkbox"/>	✓			
NovaSeq221-7 SS lib	0.65XL/0.55XR	<input type="checkbox"/>	✓			
NovaSeq221-8 SS lib	0.65XL/0.55XR	<input type="checkbox"/>	✓			
NovaSeq221-9 SS lib	0.65XL/0.55XR	<input type="checkbox"/>	✓			
NovaSeq221-16 SS lib	0.65XL/0.55XR	<input type="checkbox"/>	✓			
NovaSeq221-17 SS lib	0.65XL/0.55XR	<input type="checkbox"/>	✓			
Ladder		<input type="checkbox"/>	✓			

Chip Lot #

Reagent Kit Lot #

Chip Comments :

Assay Class: High Sensitivity DNA Assay
Data Path: Z:\...\Bioanalyzer1_High Sensitivity DNA Assay_2020-06-26_003.xad

Created: 6/26/2020 4:15:54 PM
Modified: 6/26/2020 5:34:14 PM

Electrophoresis Assay Details

General Analysis Settings

Number of Available Sample and Ladder Wells (Max.) : 12
Minimum Visible Range [s] : 32
Maximum Visible Range [s] : 138
Start Analysis Time Range [s] : 33
End Analysis Time Range [s] : 137.5
Ladder Concentration [pg/μl] : 1950
Uses Standard Area for Ladder Fragments
Lower Marker Concentration [pg/μl] : 125
Upper Marker Concentration [pg/μl] : 75
Used Upper Marker for Quantitation
Standard Curve Fit is Point to Point
Show Data Aligned to Lower and Upper Marker

Integrator Settings

Integration Start Time [s] : 33.05
Integration End Time [s] : 137
Slope Threshold : 0.8
Height Threshold [FU] : 5
Area Threshold : 0.1
Width Threshold [s] : 0.6
Baseline Plateau [s] : 0.5

Filter Settings

Filter Width [s] : 0.5
Polynomial Order : 4

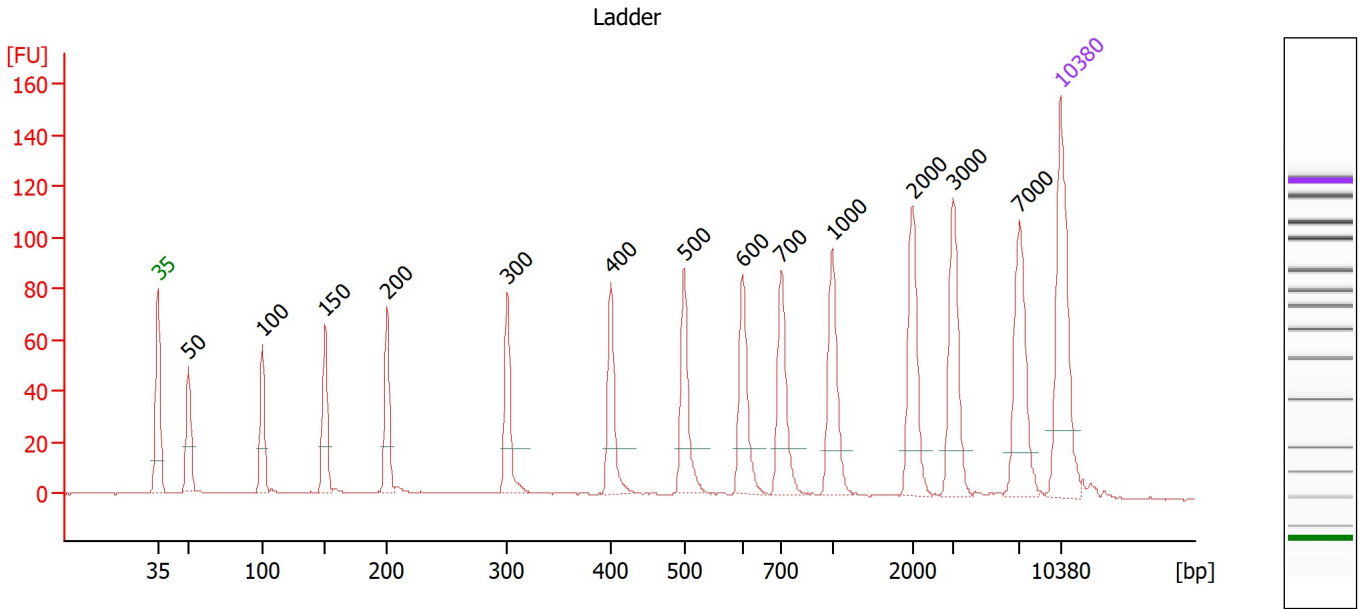
Ladder

Ladder Peak	Size	Area
1	35	160
2	50	210
3	100	208
4	150	221
5	200	242
6	300	270
7	400	305
8	500	306
9	600	336
10	700	321
11	1000	366
12	2000	413
13	3000	411
14	7000	400
15	10380	214

Assay Class: High Sensitivity DNA Assay
 Data Path: Z:\...\Bioanalyzer1_High Sensitivity DNA Assay_2020-06-26_003.xad

Created: 6/26/2020 4:15:54 PM
 Modified: 6/26/2020 5:34:14 PM

Electropherogram Summary



Overall Results for Ladder

Noise: 0.3

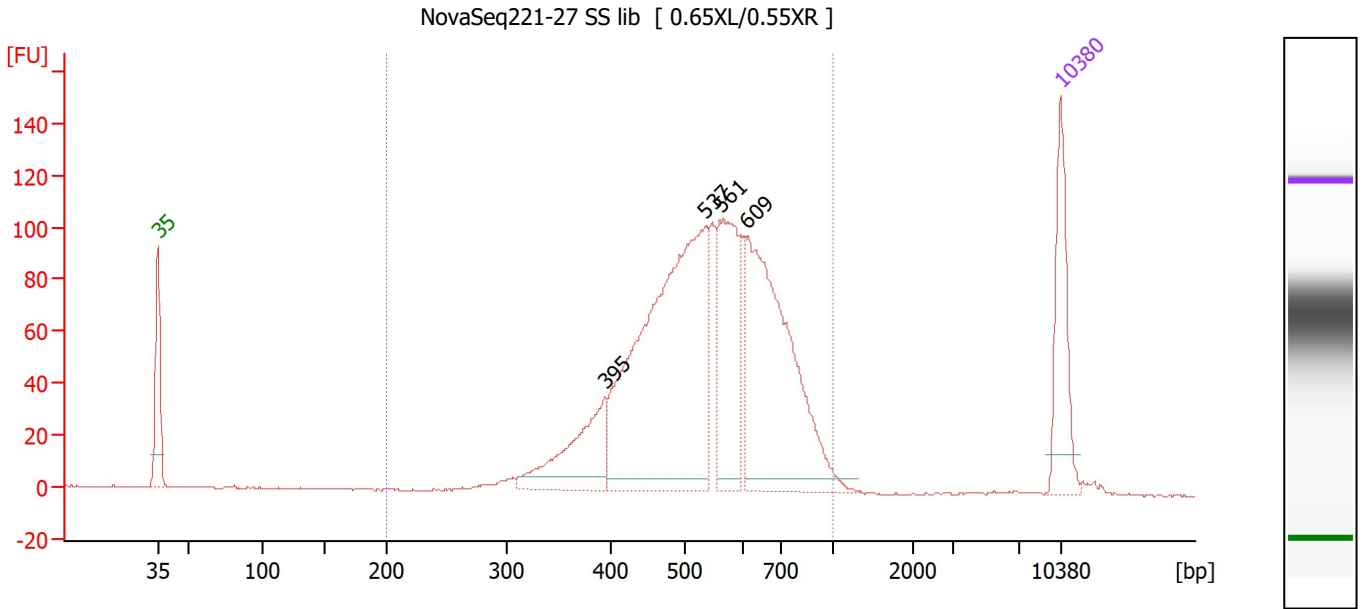
Peak table for Ladder

Peak	Size [bp]	Conc. [pg/μl]	Molarity [pmol/l]	Observations
1	35	125.00	5,411.3	Lower Marker
2	50	150.00	4,545.5	Ladder Peak
3	100	150.00	2,272.7	Ladder Peak
4	150	150.00	1,515.2	Ladder Peak
5	200	150.00	1,136.4	Ladder Peak
6	300	150.00	757.6	Ladder Peak
7	400	150.00	568.2	Ladder Peak
8	500	150.00	454.5	Ladder Peak
9	600	150.00	378.8	Ladder Peak
10	700	150.00	324.7	Ladder Peak
11	1,000	150.00	227.3	Ladder Peak
12	2,000	150.00	113.6	Ladder Peak
13	3,000	150.00	75.8	Ladder Peak
14	7,000	150.00	32.5	Ladder Peak
15	10,380	75.00	10.9	Upper Marker

Assay Class: High Sensitivity DNA Assay
 Data Path: Z:\...\Bioanalyzer1_High Sensitivity DNA Assay_2020-06-26_003.xad

Created: 6/26/2020 4:15:54 PM
 Modified: 6/26/2020 5:34:14 PM

Electropherogram Summary Continued ...



Overall Results for sample 1 : NovaSeq221-27 SS lib

Number of peaks found: 4 Corr. Area 1: 1,643.4
 Noise: 0.3

Peak table for sample 1 : NovaSeq221-27 SS lib

Peak	Size [bp]	Conc. [pg/μl]	Molarity [pmol/l]	Observations
1	35	125.00	5,411.3	Lower Marker
2	395	116.29	446.4	
3	537	508.10	1,434.9	
4	561	159.98	432.0	
5	609	321.14	799.4	
6	10,380	75.00	10.9	Upper Marker

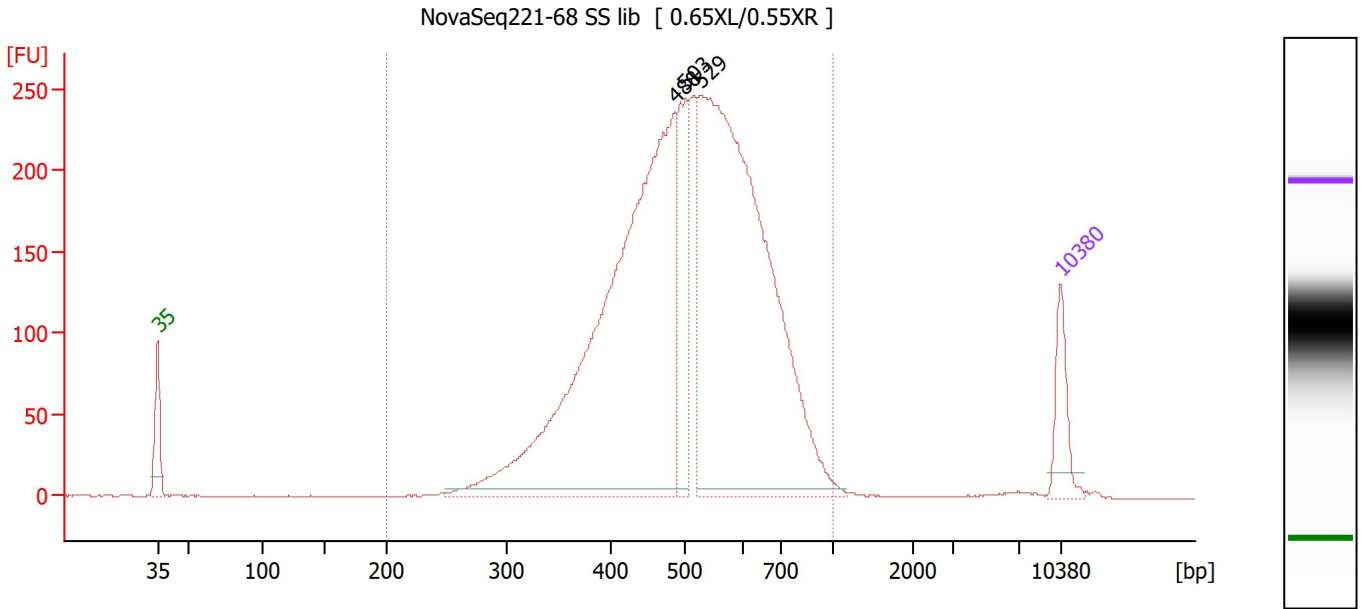
Region table for sample 1 : NovaSeq221-27 SS lib

From [bp]	To [bp]	Corr. Area	% of Total	Average Size [bp]	Size distribution in CV [%]	Conc. [pg/μl]	Molarity [pmol/l]	Color
200	1,000	1,643.4	97	551	23.0	1,248.91	3,686.5	Blue

Assay Class: High Sensitivity DNA Assay
 Data Path: Z:\...\Bioanalyzer1_High Sensitivity DNA Assay_2020-06-26_003.xad

Created: 6/26/2020 4:15:54 PM
 Modified: 6/26/2020 5:34:14 PM

Electropherogram Summary Continued ...



Overall Results for sample 2 : NovaSeq221-68 SS lib

Number of peaks found: 3 Corr. Area 1: 4,104.1
 Noise: 0.3

Peak table for sample 2 : NovaSeq221-68 SS lib

Peak	Size [bp]	Conc. [pg/μl]	Molarity [pmol/l]	Observations
1	35	125.00	5,411.3	Lower Marker
2	488	1,614.66	5,014.2	
3	503	254.08	765.6	
4	529	1,576.41	4,514.6	
5	10,380	75.00	10.9	Upper Marker

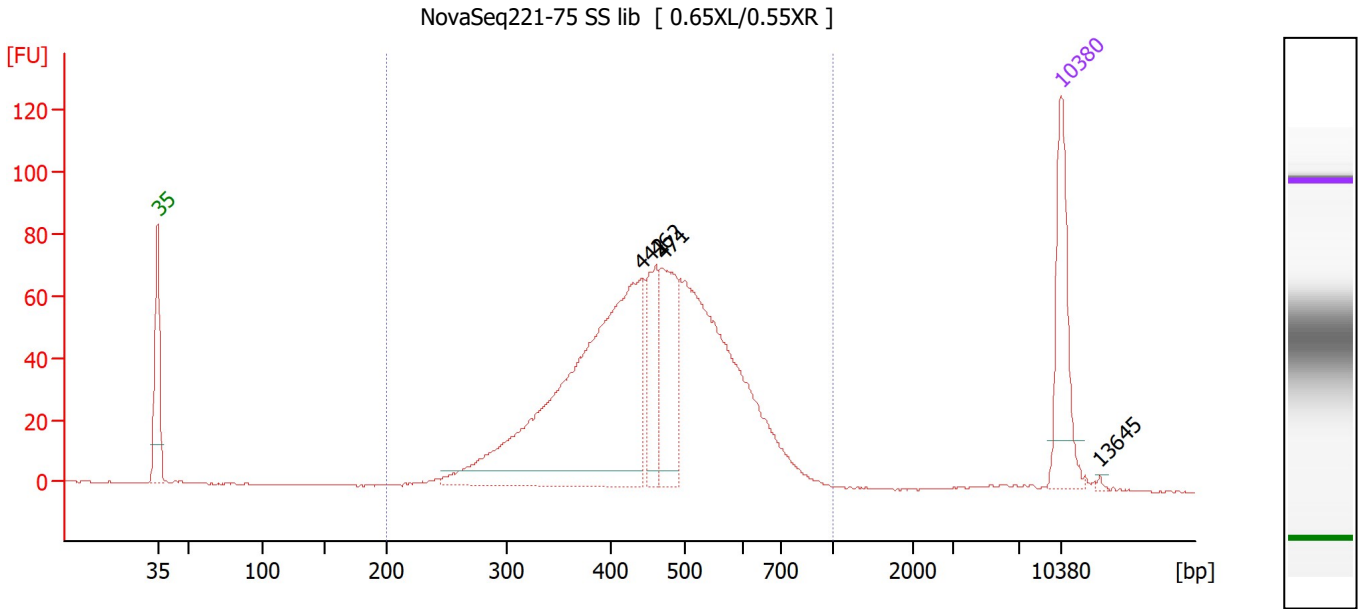
Region table for sample 2 : NovaSeq221-68 SS lib

From [bp]	To [bp]	Corr. Area	% of Total	Average Size [bp]	Size distribution in CV [%]	Conc. [pg/μl]	Molarity [pmol/l]	Color
200	1,000	4,104.1	99	517	22.9	3,671.37	11,561.6	Blue

Assay Class: High Sensitivity DNA Assay
 Data Path: Z:\...\Bioanalyzer1_High Sensitivity DNA Assay_2020-06-26_003.xad

Created: 6/26/2020 4:15:54 PM
 Modified: 6/26/2020 5:34:14 PM

Electropherogram Summary Continued ...



Overall Results for sample 3 : NovaSeq221-75 SS lib

Number of peaks found: 4 Corr. Area 1: 1,275.5
 Noise: 0.2

Peak table for sample 3 : NovaSeq221-75 SS lib

Peak	Size [bp]	Conc. [pg/μl]	Molarity [pmol/l]	Observations
1	35	125.00	5,411.3	Lower Marker
2	442	508.81	1,743.9	
3	462	79.59	261.3	
4	471	112.01	360.1	
5	10,380	75.00	10.9	Upper Marker
6	13,645	0.00	0.0	

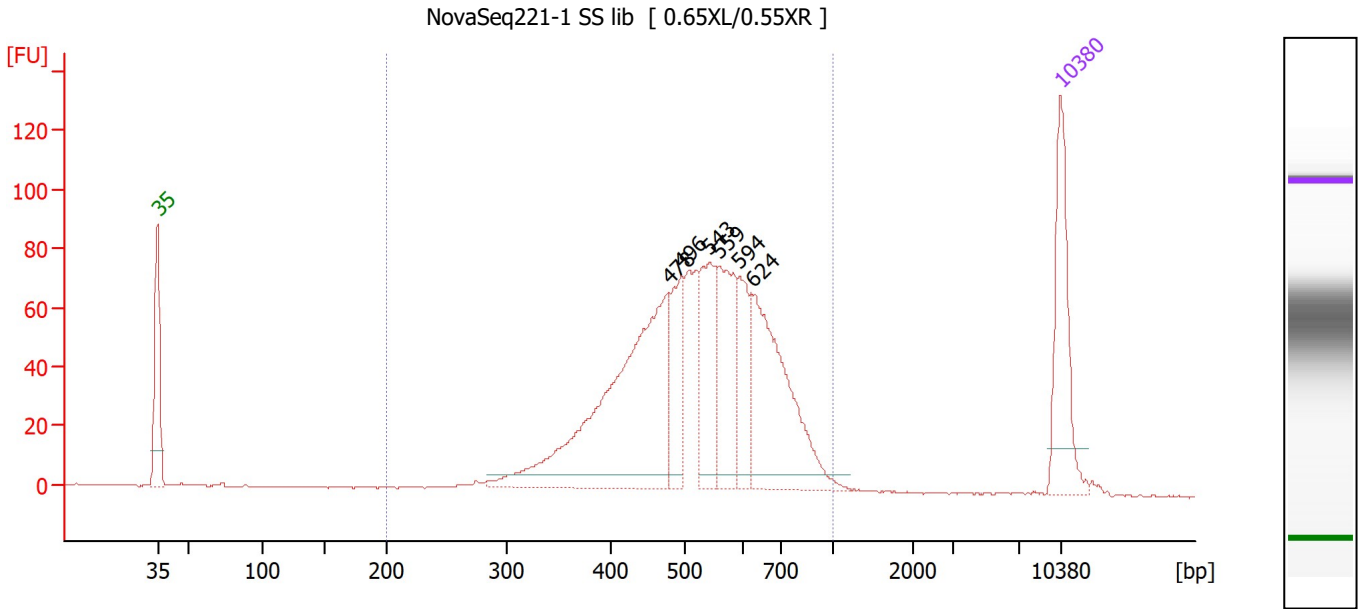
Region table for sample 3 : NovaSeq221-75 SS lib

From [bp]	To [bp]	Corr. Area	% of Total	Average Size [bp]	Size distribution in CV [%]	Conc. [pg/μl]	Molarity [pmol/l]	Color
200	1,000	1,275.5	96	463	23.3	1,154.23	4,070.0	Blue

Assay Class: High Sensitivity DNA Assay
 Data Path: Z:\...\Bioanalyzer1_High Sensitivity DNA Assay_2020-06-26_003.xad

Created: 6/26/2020 4:15:54 PM
 Modified: 6/26/2020 5:34:14 PM

Electropherogram Summary Continued ...



Overall Results for sample 4 : NovaSeq221-1 SS lib

Number of peaks found: 6 Corr. Area 1: 1,241.3
 Noise: 0.3

Peak table for sample 4 : NovaSeq221-1 SS lib

Peak	Size [bp]	Conc. [pg/μl]	Molarity [pmol/l]	Observations
1	35	125.00	5,411.3	Lower Marker
2	478	331.06	1,048.3	
3	496	68.14	208.0	
4	543	84.33	235.1	
5	559	97.78	264.8	
6	594	56.75	144.8	
7	624	169.49	411.2	
8	10,380	75.00	10.9	Upper Marker

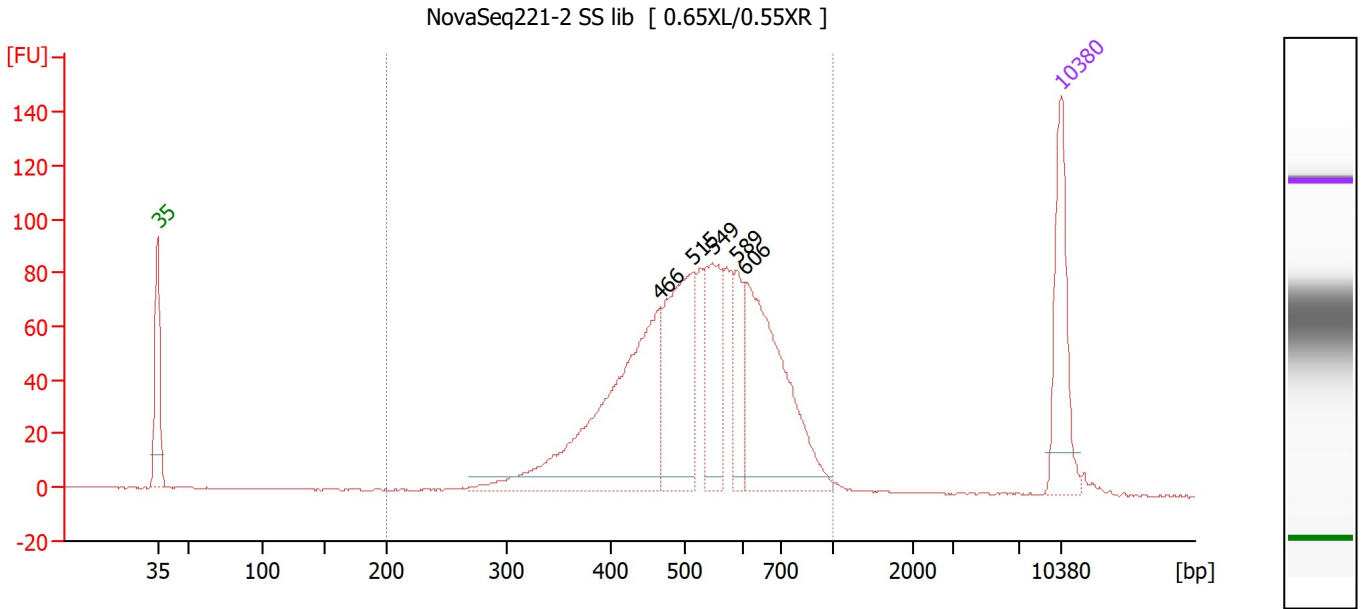
Region table for sample 4 : NovaSeq221-1 SS lib

From [bp]	To [bp]	Corr. Area	% of Total	Average Size [bp]	Size distribution in CV [%]	Conc. [pg/μl]	Molarity [pmol/l]	Color
200	1,000	1,241.3	98	533	22.9	946.36	2,890.9	Blue

Assay Class: High Sensitivity DNA Assay
 Data Path: Z:\...\Bioanalyzer1_High Sensitivity DNA Assay_2020-06-26_003.xad

Created: 6/26/2020 4:15:54 PM
 Modified: 6/26/2020 5:34:14 PM

Electropherogram Summary Continued ...



Overall Results for sample 5 : NovaSeq221-2 SS lib

Number of peaks found: 5 Corr. Area 1: 1,353.2
 Noise: 0.2

Peak table for sample 5 : NovaSeq221-2 SS lib

Peak	Size [bp]	Conc. [pg/μl]	Molarity [pmol/l]	Observations
1	35	125.00	5,411.3	Lower Marker
2	466	304.67	989.6	
3	515	171.25	503.9	
4	549	97.35	268.7	
5	589	49.24	126.7	
6	606	209.50	523.6	
7	10,380	75.00	10.9	Upper Marker

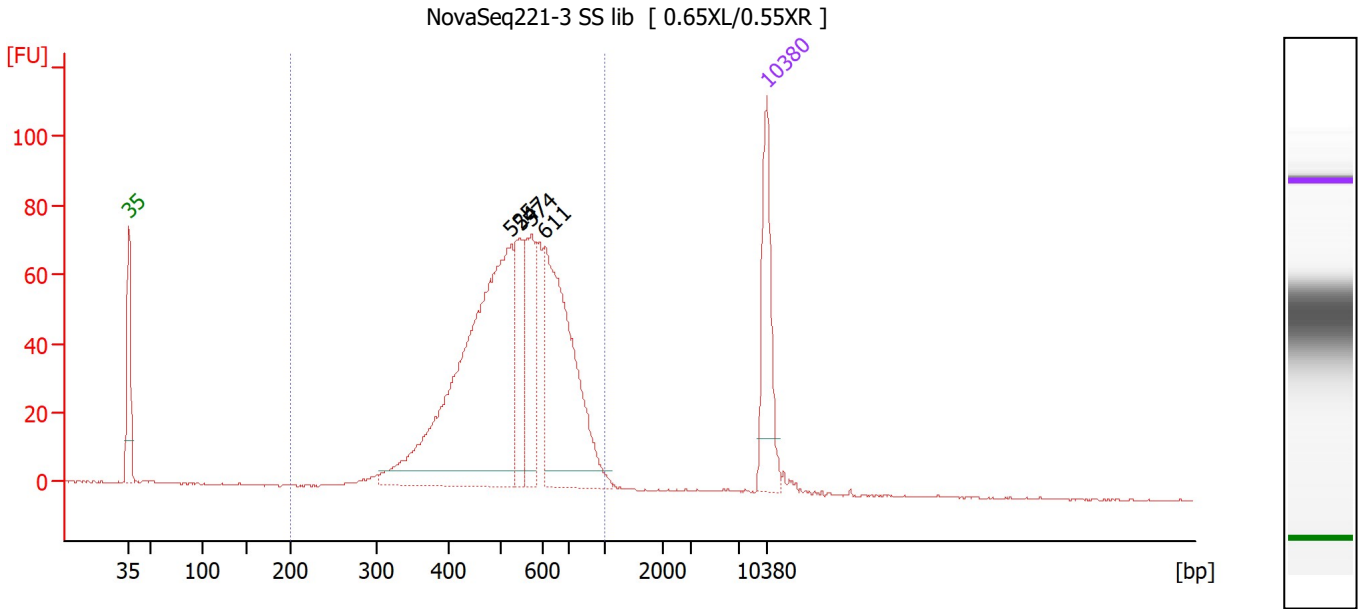
Region table for sample 5 : NovaSeq221-2 SS lib

From [bp]	To [bp]	Corr. Area	% of Total	Average Size [bp]	Size distribution in CV [%]	Conc. [pg/μl]	Molarity [pmol/l]	Color
200	1,000	1,353.2	98	536	22.7	979.98	2,971.4	Blue

Assay Class: High Sensitivity DNA Assay
 Data Path: Z:\...\Bioanalyzer1_High Sensitivity DNA Assay_2020-06-26_003.xad

Created: 6/26/2020 4:15:54 PM
 Modified: 6/26/2020 5:34:14 PM

Electropherogram Summary Continued ...



Overall Results for sample 6 : NovaSeq221-3 SS lib

Number of peaks found: 4 Corr. Area 1: 1,127.2
 Noise: 0.3

Peak table for sample 6 : NovaSeq221-3 SS lib

Peak	Size [bp]	Conc. [pg/μl]	Molarity [pmol/l]	Observations
1	35	125.00	5,411.3	Lower Marker
2	525	471.98	1,361.0	
3	547	82.97	229.7	
4	574	88.59	233.8	
5	611	237.63	589.0	
6	10,380	75.00	10.9	Upper Marker

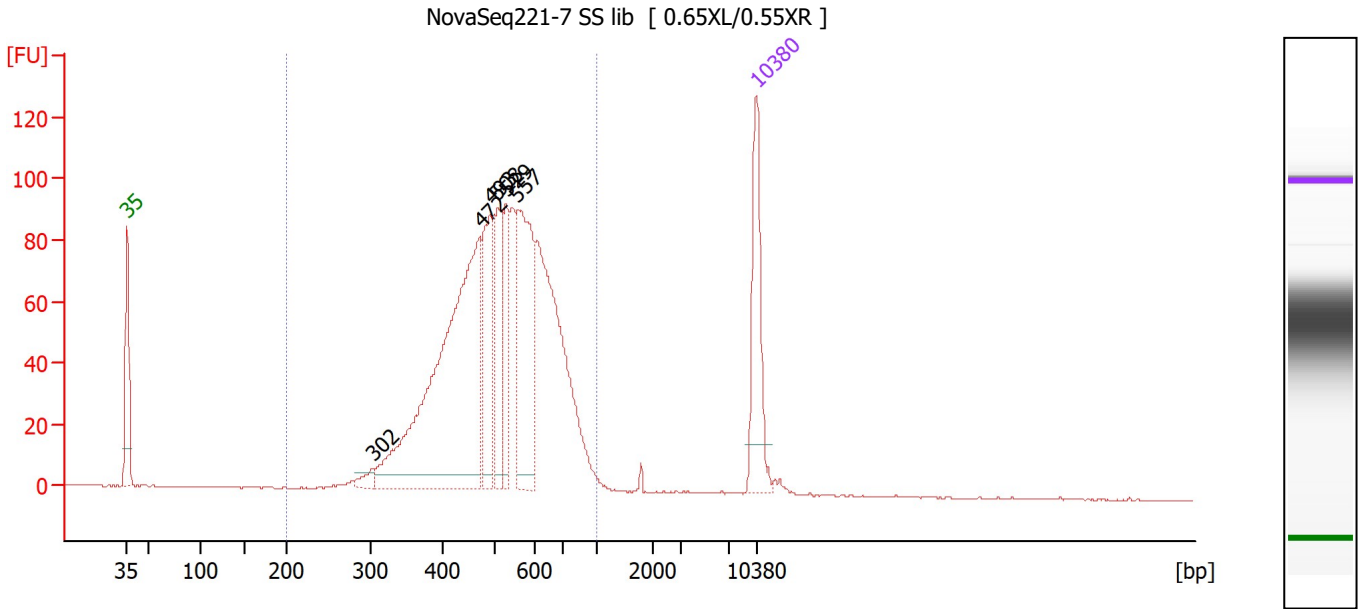
Region table for sample 6 : NovaSeq221-3 SS lib

From [bp]	To [bp]	Corr. Area	% of Total	Average Size [bp]	Size distribution in CV [%]	Conc. [pg/μl]	Molarity [pmol/l]	Color
200	1,000	1,127.2	98	545	22.5	996.91	2,968.3	Blue

Assay Class: High Sensitivity DNA Assay
 Data Path: Z:\...\Bioanalyzer1_High Sensitivity DNA Assay_2020-06-26_003.xad

Created: 6/26/2020 4:15:54 PM
 Modified: 6/26/2020 5:34:14 PM

Electropherogram Summary Continued ...



Overall Results for sample 7 : NovaSeq221-7 SS lib

Number of peaks found: 6 Corr. Area 1: 1,513.7
 Noise: 0.2

Peak table for sample 7 : NovaSeq221-7 SS lib

Peak	Size [bp]	Conc. [pg/μl]	Molarity [pmol/l]	Observations
1	35	125.00	5,411.3	Lower Marker
2	302	11.69	58.7	
3	472	439.65	1,411.5	
4	493	110.25	338.9	
5	508	77.21	230.3	
6	529	65.53	187.8	
7	557	161.79	439.8	
8	10,380	75.00	10.9	Upper Marker

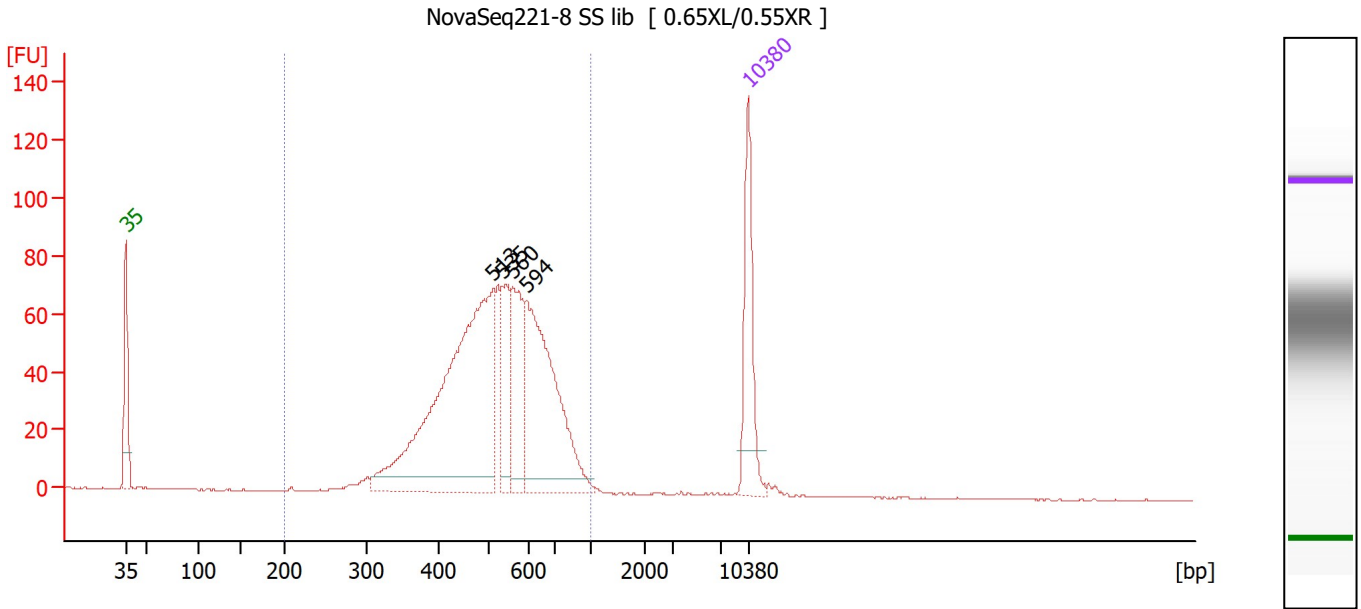
Region table for sample 7 : NovaSeq221-7 SS lib

From [bp]	To [bp]	Corr. Area	% of Total	Average Size [bp]	Size distribution in CV [%]	Conc. [pg/μl]	Molarity [pmol/l]	Color
200	1,000	1,513.7	99	526	22.8	1,231.78	3,803.7	Blue

Assay Class: High Sensitivity DNA Assay
 Data Path: Z:\...\Bioanalyzer1_High Sensitivity DNA Assay_2020-06-26_003.xad

Created: 6/26/2020 4:15:54 PM
 Modified: 6/26/2020 5:34:14 PM

Electropherogram Summary Continued ...



Overall Results for sample 8 : NovaSeq221-8 SS lib

Number of peaks found: 4 Corr. Area 1: 1,128.1
 Noise: 0.2

Peak table for sample 8 : NovaSeq221-8 SS lib

Peak	Size [bp]	Conc. [pg/μl]	Molarity [pmol/l]	Observations
1	35	125.00	5,411.3	Lower Marker
2	513	440.55	1,301.6	
3	535	70.40	199.3	
4	560	87.74	237.4	
5	594	216.33	551.6	
6	10,380	75.00	10.9	Upper Marker

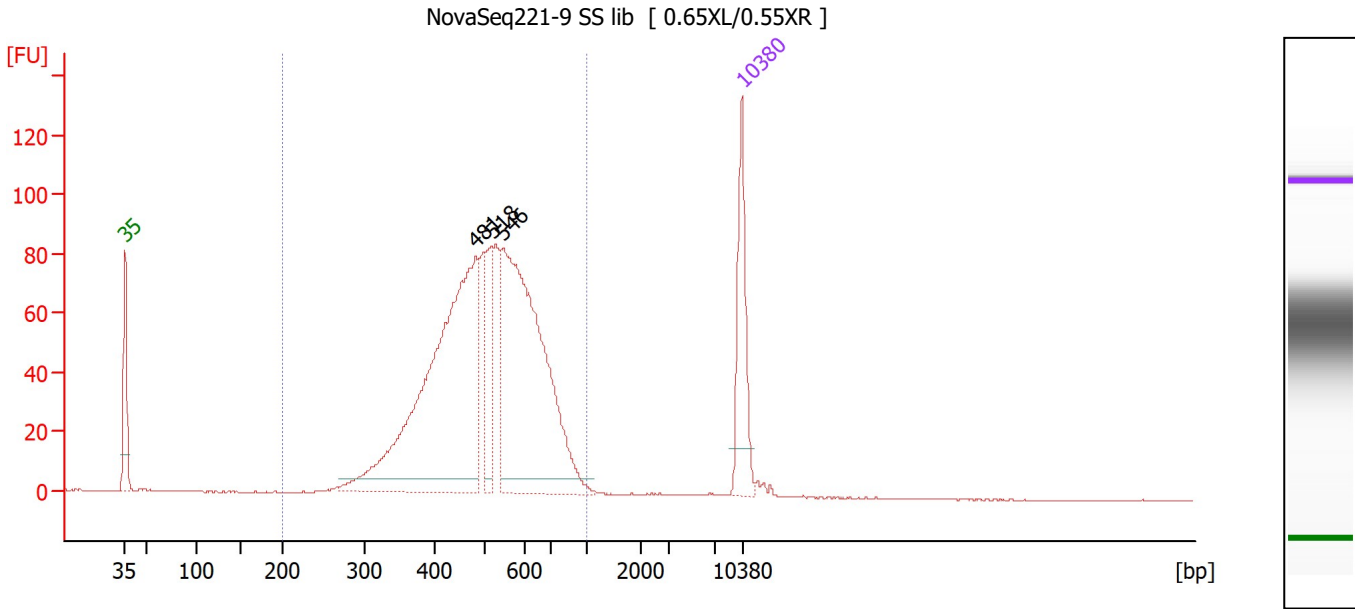
Region table for sample 8 : NovaSeq221-8 SS lib

From [bp]	To [bp]	Corr. Area	% of Total	Average Size [bp]	Size distribution in CV [%]	Conc. [pg/μl]	Molarity [pmol/l]	Color
200	1,000	1,128.1	99	530	22.6	923.09	2,829.2	Blue

Assay Class: High Sensitivity DNA Assay
 Data Path: Z:\...\Bioanalyzer1_High Sensitivity DNA Assay_2020-06-26_003.xad

Created: 6/26/2020 4:15:54 PM
 Modified: 6/26/2020 5:34:14 PM

Electropherogram Summary Continued ...



Overall Results for sample 9 : NovaSeq221-9 SS lib

Number of peaks found: 3 Corr. Area 1: 1,370.3
 Noise: 0.2

Peak table for sample 9 : NovaSeq221-9 SS lib

Peak	Size [bp]	Conc. [pg/μl]	Molarity [pmol/l]	Observations
1	35	125.00	5,411.3	Lower Marker
2	481	512.77	1,613.8	
3	518	63.50	185.7	
4	546	427.27	1,186.1	
5	10,380	75.00	10.9	Upper Marker

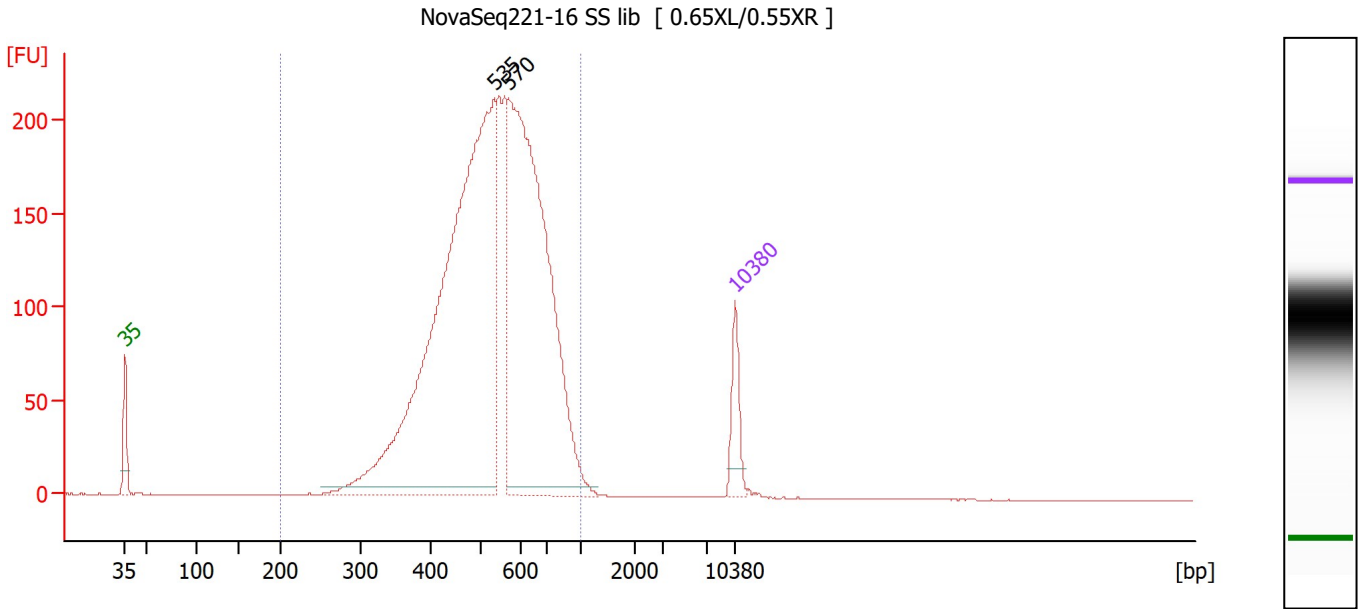
Region table for sample 9 : NovaSeq221-9 SS lib

From [bp]	To [bp]	Corr. Area	% of Total	Average Size [bp]	Size distribution in CV [%]	Conc. [pg/μl]	Molarity [pmol/l]	Color
200	1,000	1,370.3	99	516	22.6	1,165.44	3,669.8	Blue

Assay Class: High Sensitivity DNA Assay
 Data Path: Z:\...\Bioanalyzer1_High Sensitivity DNA Assay_2020-06-26_003.xad

Created: 6/26/2020 4:15:54 PM
 Modified: 6/26/2020 5:34:14 PM

Electropherogram Summary Continued ...



Overall Results for sample 10 : NovaSeq221-16 SS lib

Number of peaks found: 2 Corr. Area 1: 3,304.3
 Noise: 0.2

Peak table for sample 10 : NovaSeq221-16 SS lib

Peak	Size [bp]	Conc. [pg/μl]	Molarity [pmol/l]	Observations
1	35	125.00	5,411.3	Lower Marker
2	535	1,926.63	5,455.9	
3	570	1,352.99	3,597.3	
4	10,380	75.00	10.9	Upper Marker

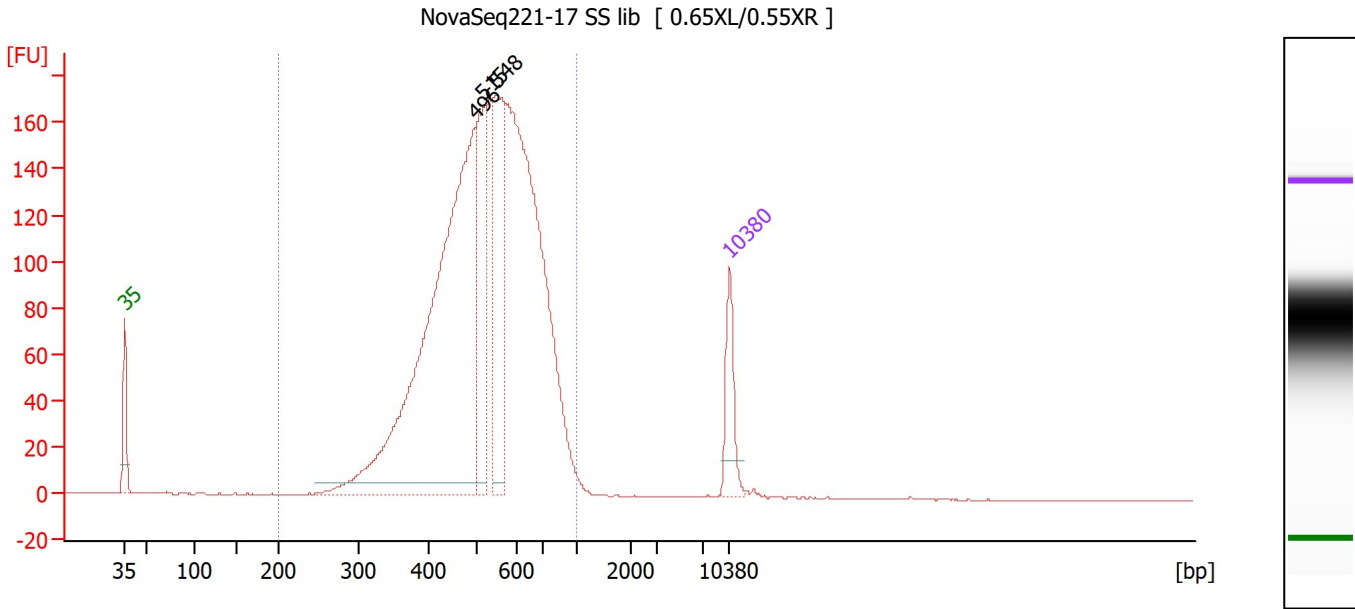
Region table for sample 10 : NovaSeq221-16 SS lib

From [bp]	To [bp]	Corr. Area	% of Total	Average Size [bp]	Size distribution in CV [%]	Conc. [pg/μl]	Molarity [pmol/l]	Color
200	1,000	3,304.3	99	543	22.9	3,768.15	11,281.9	Blue

Assay Class: High Sensitivity DNA Assay
 Data Path: Z:\...\Bioanalyzer1_High Sensitivity DNA Assay_2020-06-26_003.xad

Created: 6/26/2020 4:15:54 PM
 Modified: 6/26/2020 5:34:14 PM

Electropherogram Summary Continued ...



Overall Results for sample 11 : NovaSeq221-17 SS lib

Number of peaks found: 3 Corr. Area 1: 2,685.2
 Noise: 0.2

Peak table for sample 11 : NovaSeq221-17 SS lib

Peak	Size [bp]	Conc. [pg/μl]	Molarity [pmol/l]	Observations
1	35	125.00	5,411.3	Lower Marker
2	496	1,239.24	3,784.8	
3	515	246.70	725.2	
4	548	309.27	855.4	
5	10,380	75.00	10.9	Upper Marker

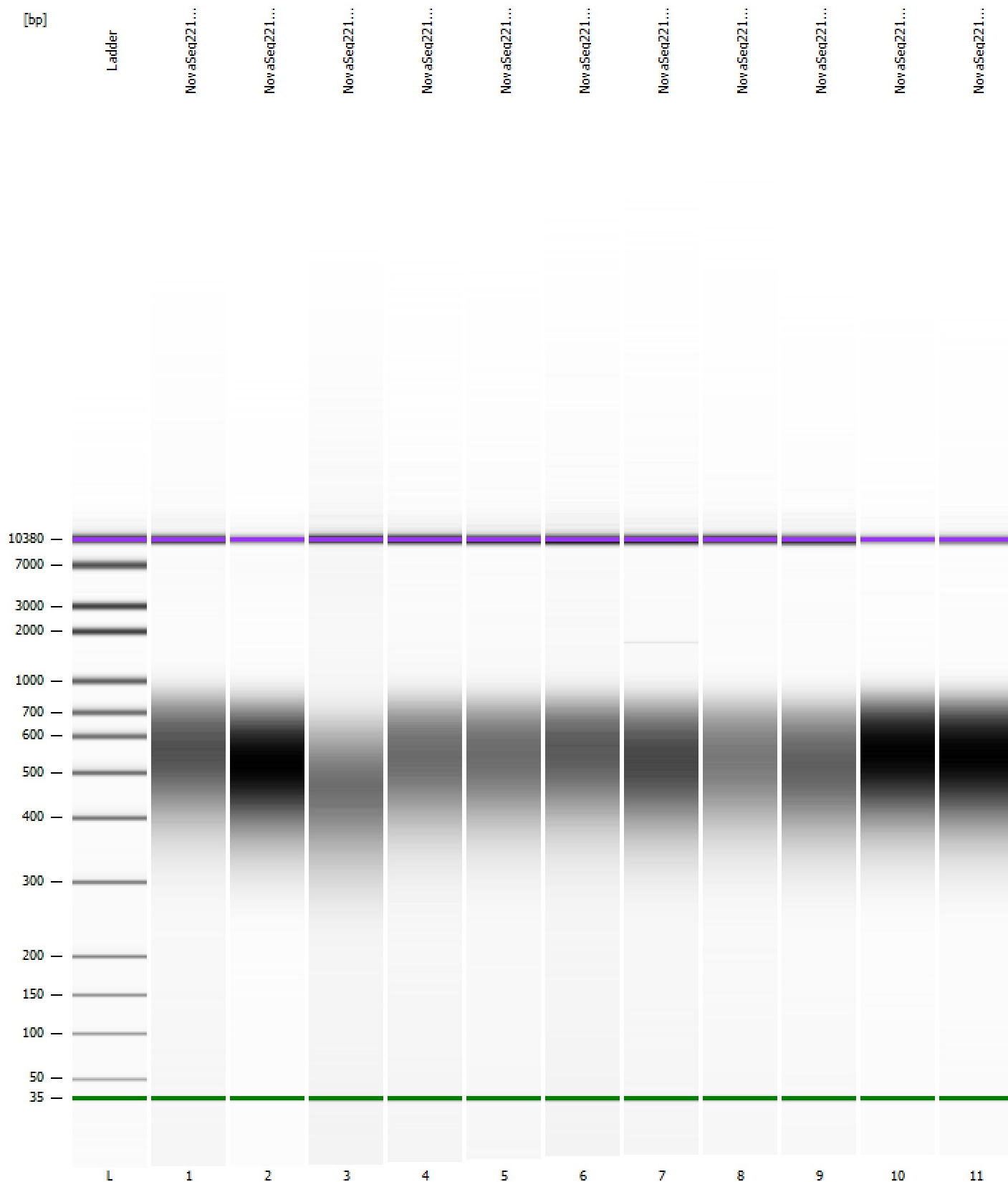
Region table for sample 11 : NovaSeq221-17 SS lib

From [bp]	To [bp]	Corr. Area	% of Total	Average Size [bp]	Size distribution in CV [%]	Conc. [pg/μl]	Molarity [pmol/l]	Color
200	1,000	2,685.2	99	537	22.7	2,997.82	9,068.5	Blue

Assay Class: High Sensitivity DNA Assay
Data Path: Z:\...\Bioanalyzer1_High Sensitivity DNA Assay_2020-06-26_003.xad

Created: 6/26/2020 4:15:54 PM
Modified: 6/26/2020 5:34:14 PM

Gel Image



Assay Class: High Sensitivity DNA Assay
 Data Path: Z:\...\Bioanalyzer1_High Sensitivity DNA Assay_2020-06-26_003.xad

Created: 6/26/2020 4:15:54 PM
 Modified: 6/26/2020 5:34:14 PM

Run Logbook

Description	Number	Source	Category	Sub Category	Time	Time Zone	User	Host
Run ended on port 1 (Number of wells acquired: 12)		Instrument	Run		6/26/2020 4:56:17 PM	(GMT --07:00) Pacific Standard Time	sbsuser	DESKTOP-4UNV VOB
Run started on port 1 (File: Z:\XADs\2020-06-26\Bioanalyzer1_High Sensitivity DNA Assay_2020-06-26_003.xad)		Instrument	Run		6/26/2020 4:15:54 PM	(GMT --07:00) Pacific Standard Time	sbsuser	DESKTOP-4UNV VOB
Product Number : G2938C		Instrument	Run		6/26/2020 4:15:54 PM	(GMT --07:00) Pacific Standard Time	sbsuser	DESKTOP-4UNV VOB
Name :		Instrument	Run		6/26/2020 4:15:54 PM	(GMT --07:00) Pacific Standard Time	sbsuser	DESKTOP-4UNV VOB
Vendor : Agilent Technologies		Instrument	Run		6/26/2020 4:15:54 PM	(GMT --07:00) Pacific Standard Time	sbsuser	DESKTOP-4UNV VOB
Serial# : DE34903152		Instrument	Run		6/26/2020 4:15:54 PM	(GMT --07:00) Pacific Standard Time	sbsuser	DESKTOP-4UNV VOB
Firmware : C.01.069		Instrument	Run		6/26/2020 4:15:54 PM	(GMT --07:00) Pacific Standard Time	sbsuser	DESKTOP-4UNV VOB
Cartridge : Electrode		Instrument	Run		6/26/2020 4:15:54 PM	(GMT --07:00) Pacific Standard Time	sbsuser	DESKTOP-4UNV VOB