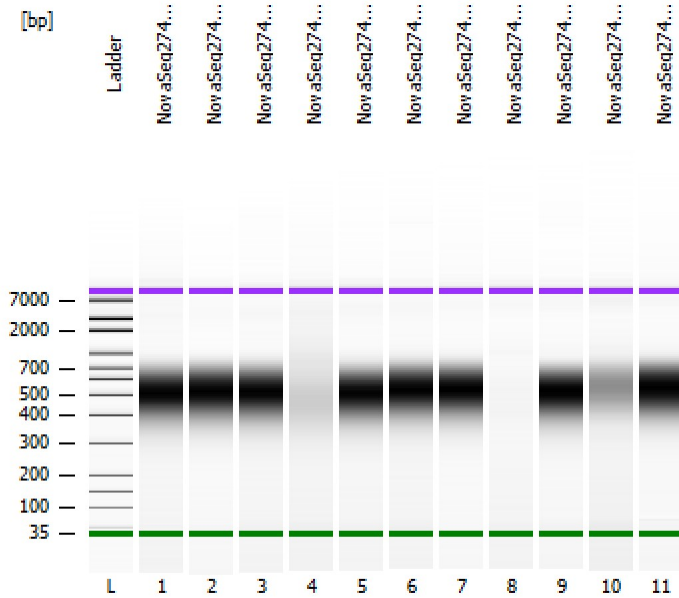


Assay Class: High Sensitivity DNA Assay
Data Path: Z:\...\Bioanalyzer1_High Sensitivity DNA Assay_2020-10-26_003.xad

Created: 10/26/2020 5:07:06 PM
Modified: 10/26/2020 5:47:37 PM

Electrophoresis File Run Summary



Instrument Information:

Instrument Name: DE34903152 Firmware: C.01.069
Serial#: DE34903152 Type: G2938C

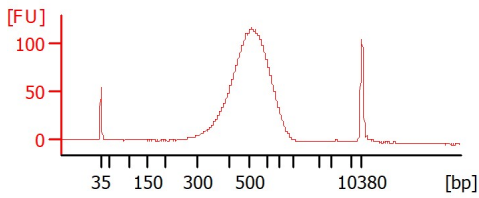
Assay Information:

Assay Origin Path: C:\Program Files (x86)\Agilent\2100 bioanalyzer\2100 expert\assays\dsDNA\High Sensitivity DNA.xsy
Assay Class: High Sensitivity DNA Assay
Version: 1.03
Assay Comments: Copyright © 2003-2010 Agilent Technologies

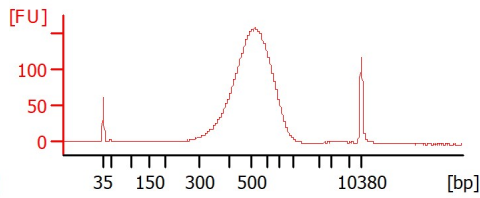
Chip Information:

Chip Lot #:
Reagent Kit Lot #:
Chip Comments:

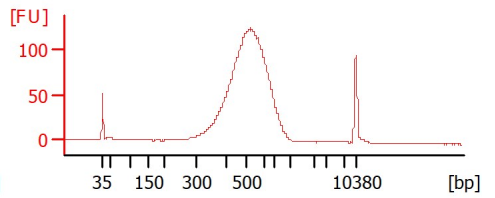
NovaSeq274 - 1 Size Sel Library



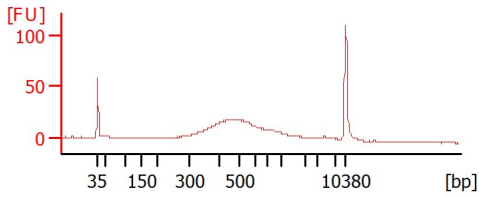
NovaSeq274 - 2 Size Sel Library



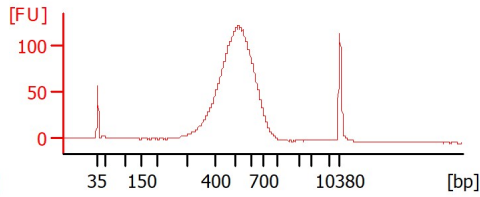
NovaSeq274 - 3 Size Sel Library



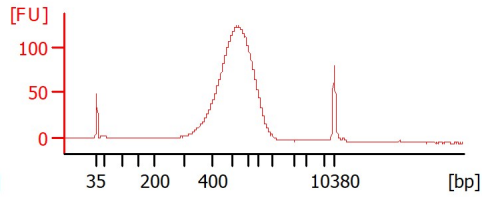
NovaSeq274 - 4 Size Sel Library



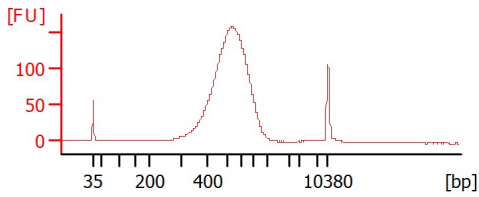
NovaSeq274 - 5 Size Sel Library



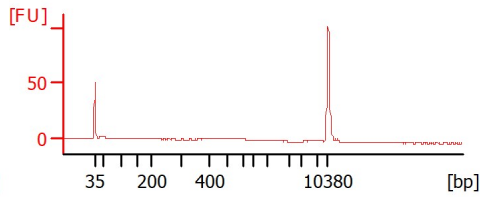
NovaSeq274 - 6 Size Sel Library



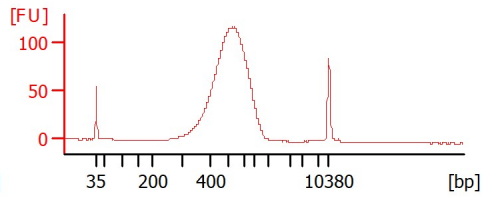
NovaSeq274 - 7 Size Sel Library



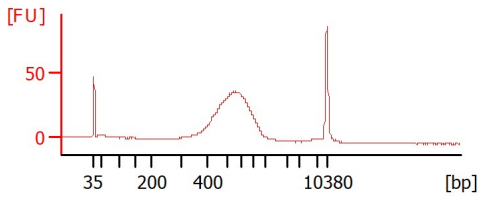
NovaSeq274 - 8 Size Sel Library



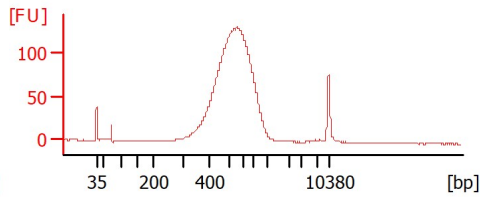
NovaSeq274 - 9 Size Sel Library



NovaSeq274 - 10 Size Sel Library



NovaSeq274 - 11 Size Sel Library



Assay Class: High Sensitivity DNA Assay
 Data Path: Z:\...\Bioanalyzer1_High Sensitivity DNA Assay_2020-10-26_003.xad

Created: 10/26/2020 5:07:06 PM
 Modified: 10/26/2020 5:47:37 PM

Electrophoresis File Run Summary (Chip Summary)

Sample Name	Sample Comment	Rest. Digest	Status	Observation	Result Label	Result Color
NovaSeq274 - 1 Size Sel Library		<input type="checkbox"/>	✓			
NovaSeq274 - 2 Size Sel Library		<input type="checkbox"/>	✓			
NovaSeq274 - 3 Size Sel Library		<input type="checkbox"/>	✓			
NovaSeq274 - 4 Size Sel Library		<input type="checkbox"/>	✓			
NovaSeq274 - 5 Size Sel Library		<input type="checkbox"/>	✓			
NovaSeq274 - 6 Size Sel Library		<input type="checkbox"/>	✓			
NovaSeq274 - 7 Size Sel Library		<input type="checkbox"/>	✓			
NovaSeq274 - 8 Size Sel Library		<input type="checkbox"/>	✓			
NovaSeq274 - 9 Size Sel Library		<input type="checkbox"/>	✓			
NovaSeq274 - 10 Size Sel Library		<input type="checkbox"/>	✓			
NovaSeq274 - 11 Size Sel Library		<input type="checkbox"/>	✓			
Ladder		<input type="checkbox"/>	✓			

Chip Lot #

Reagent Kit Lot #

Chip Comments :

Assay Class: High Sensitivity DNA Assay
 Data Path: Z:\...\Bioanalyzer1_High Sensitivity DNA Assay_2020-10-26_003.xad

Created: 10/26/2020 5:07:06 PM
 Modified: 10/26/2020 5:47:37 PM

Electrophoresis Assay Details

General Analysis Settings

Number of Available Sample and Ladder Wells (Max.) : 12
 Minimum Visible Range [s] : 32
 Maximum Visible Range [s] : 138
 Start Analysis Time Range [s] : 33
 End Analysis Time Range [s] : 137.5
 Ladder Concentration [pg/μl] : 1950
 Uses Standard Area for Ladder Fragments
 Lower Marker Concentration [pg/μl] : 125
 Upper Marker Concentration [pg/μl] : 75
 Used Upper Marker for Quantitation
 Standard Curve Fit is Point to Point
 Show Data Aligned to Lower and Upper Marker

Integrator Settings

Integration Start Time [s] : 33.05
 Integration End Time [s] : 137
 Slope Threshold : 0.8
 Height Threshold [FU] : 5
 Area Threshold : 0.1
 Width Threshold [s] : 0.6
 Baseline Plateau [s] : 0.5

Filter Settings

Filter Width [s] : 0.5
 Polynomial Order : 4

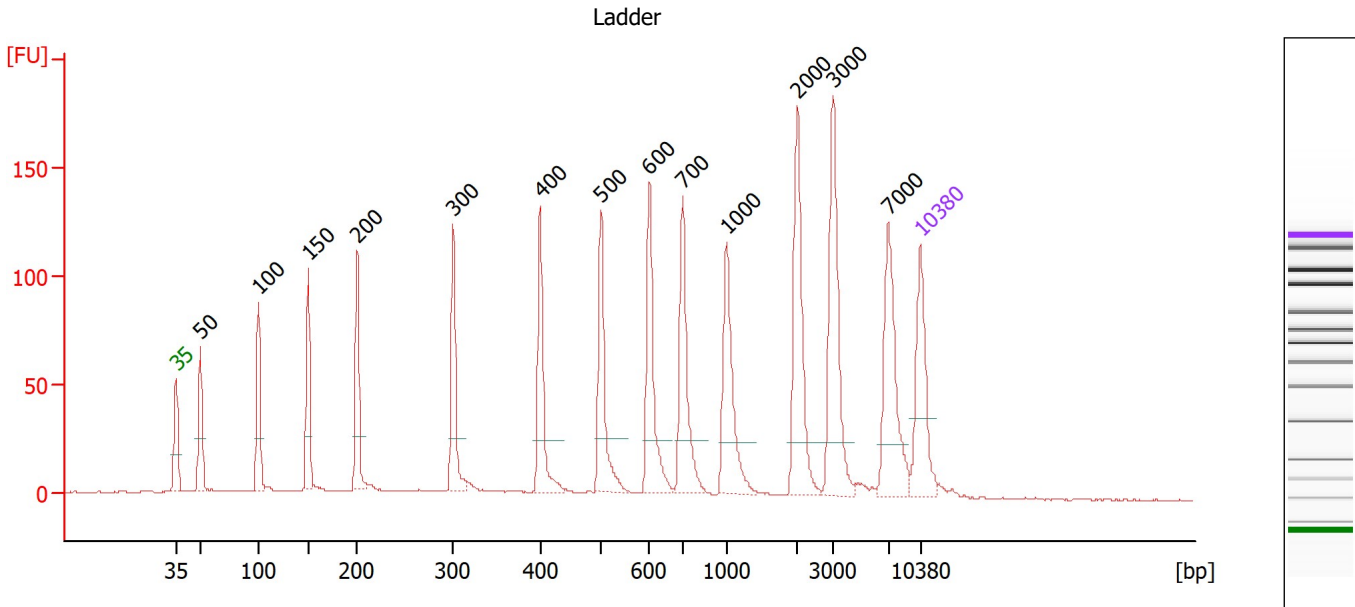
Ladder

Ladder Peak	Size	Area
1	35	160
2	50	210
3	100	208
4	150	221
5	200	242
6	300	270
7	400	305
8	500	306
9	600	336
10	700	321
11	1000	366
12	2000	413
13	3000	411
14	7000	400
15	10380	214

Assay Class: High Sensitivity DNA Assay
 Data Path: Z:\...\Bioanalyzer1_High Sensitivity DNA Assay_2020-10-26_003.xad

Created: 10/26/2020 5:07:06 PM
 Modified: 10/26/2020 5:47:37 PM

Electropherogram Summary



Overall Results for Ladder

Noise: 0.4

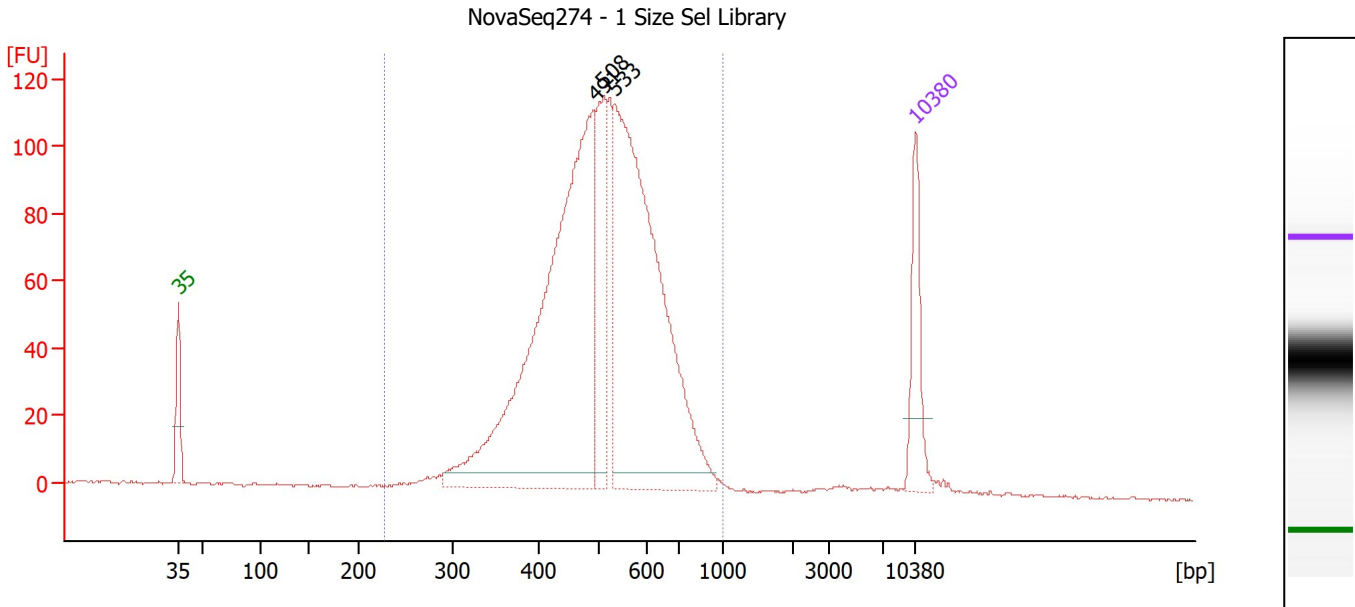
Peak table for Ladder

Peak	Size [bp]	Conc. [pg/μl]	Molarity [pmol/l]	Observations
1	35	125.00	5,411.3	Lower Marker
2	50	150.00	4,545.5	Ladder Peak
3	100	150.00	2,272.7	Ladder Peak
4	150	150.00	1,515.2	Ladder Peak
5	200	150.00	1,136.4	Ladder Peak
6	300	150.00	757.6	Ladder Peak
7	400	150.00	568.2	Ladder Peak
8	500	150.00	454.5	Ladder Peak
9	600	150.00	378.8	Ladder Peak
10	700	150.00	324.7	Ladder Peak
11	1,000	150.00	227.3	Ladder Peak
12	2,000	150.00	113.6	Ladder Peak
13	3,000	150.00	75.8	Ladder Peak
14	7,000	150.00	32.5	Ladder Peak
15	10,380	75.00	10.9	Upper Marker

Assay Class: High Sensitivity DNA Assay
 Data Path: Z:\...\Bioanalyzer1_High Sensitivity DNA Assay_2020-10-26_003.xad

Created: 10/26/2020 5:07:06 PM
 Modified: 10/26/2020 5:47:37 PM

Electropherogram Summary Continued ...



Overall Results for sample 1 : NovaSeq274 - 1 Size Sel Library

Number of peaks found: 3 Corr. Area 1: 1,721.8
 Noise: 0.3

Peak table for sample 1 : NovaSeq274 - 1 Size Sel Library

Peak	Size [bp]	Conc. [pg/μl]	Molarity [pmol/l]	Observations
1	35	125.00	5,411.3	Lower Marker
2	491	874.58	2,700.4	
3	508	174.09	518.9	
4	533	746.35	2,121.6	
5	10,380	75.00	10.9	Upper Marker

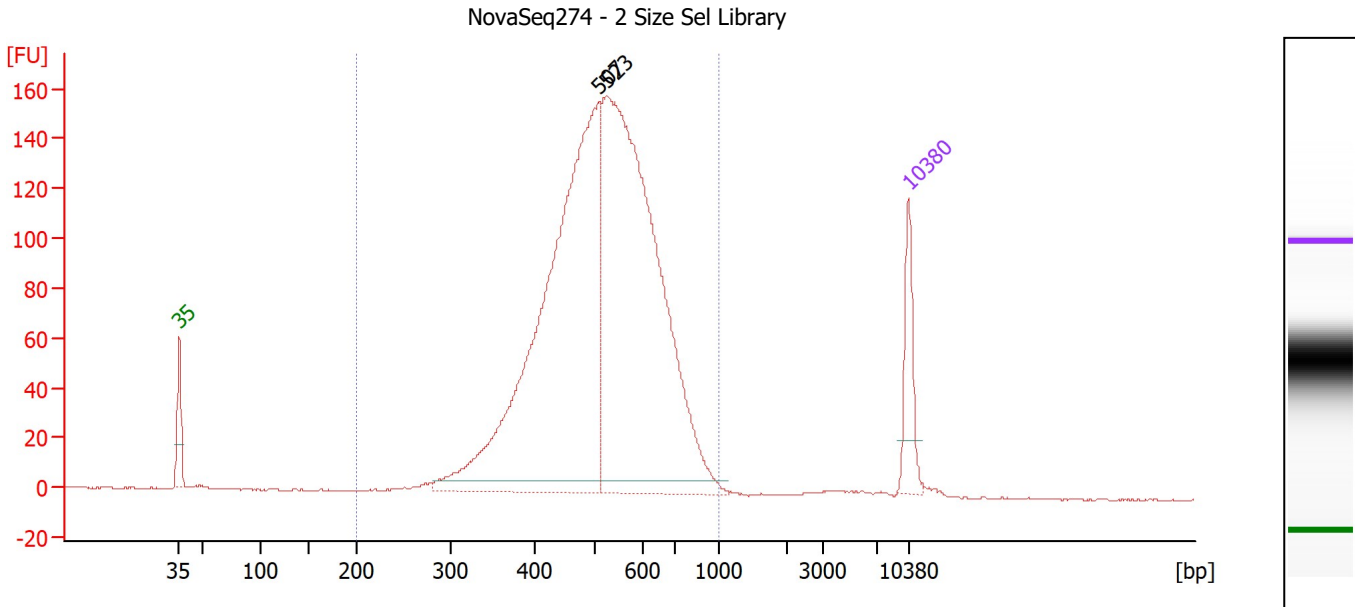
Region table for sample 1 : NovaSeq274 - 1 Size Sel Library

From [bp]	To [bp]	Corr. Area	% of Total	Average Size [bp]	Size distribution in CV [%]	Conc. [pg/μl]	Molarity [pmol/l]	Color
228	1,000	1,721.8	97	513	20.7	1,934.86	6,065.4	Blue

Assay Class: High Sensitivity DNA Assay
 Data Path: Z:\...\Bioanalyzer1_High Sensitivity DNA Assay_2020-10-26_003.xad

Created: 10/26/2020 5:07:06 PM
 Modified: 10/26/2020 5:47:37 PM

Electropherogram Summary Continued ...



Overall Results for sample 2 : NovaSeq274 - 2 Size Sel Library

Number of peaks found: 2 Corr. Area 1: 2,339.5
 Noise: 0.3

Peak table for sample 2 : NovaSeq274 - 2 Size Sel Library

Peak	Size [bp]	Conc. [pg/μl]	Molarity [pmol/l]	Observations
1	35	125.00	5,411.3	Lower Marker
2	507	1,243.81	3,713.8	
3	523	1,259.20	3,645.6	
4	10,380	75.00	10.9	Upper Marker

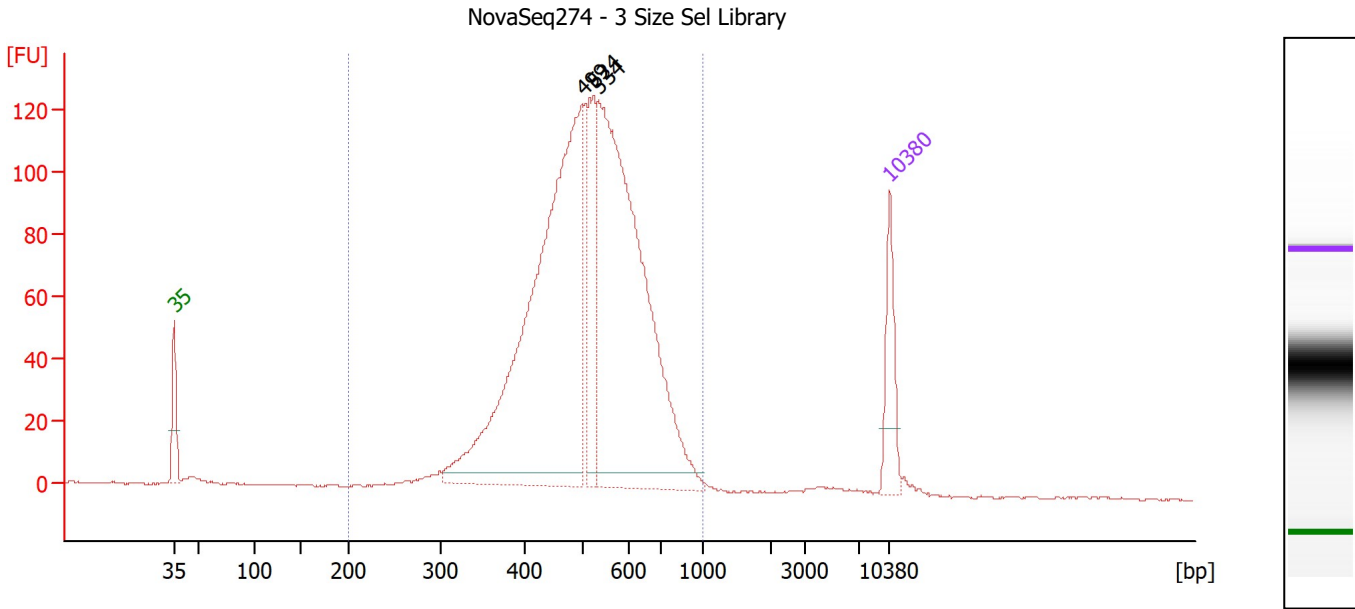
Region table for sample 2 : NovaSeq274 - 2 Size Sel Library

From [bp]	To [bp]	Corr. Area	% of Total	Average Size [bp]	Size distribution in CV [%]	Conc. [pg/μl]	Molarity [pmol/l]	Color
200	1,000	2,339.5	99	523	21.0	2,523.62	7,763.8	Blue

Assay Class: High Sensitivity DNA Assay
 Data Path: Z:\...\Bioanalyzer1_High Sensitivity DNA Assay_2020-10-26_003.xad

Created: 10/26/2020 5:07:06 PM
 Modified: 10/26/2020 5:47:37 PM

Electropherogram Summary Continued ...



Overall Results for sample 3 : NovaSeq274 - 3 Size Sel Library

Number of peaks found: 3 Corr. Area 1: 1,838.1
 Noise: 0.3

Peak table for sample 3 : NovaSeq274 - 3 Size Sel Library

Peak	Size [bp]	Conc. [pg/μl]	Molarity [pmol/l]	Observations
1	35	125.00	5,411.3	Lower Marker
2	499	1,071.87	3,257.4	
3	524	174.98	506.3	
4	534	948.41	2,690.8	
5	10,380	75.00	10.9	Upper Marker

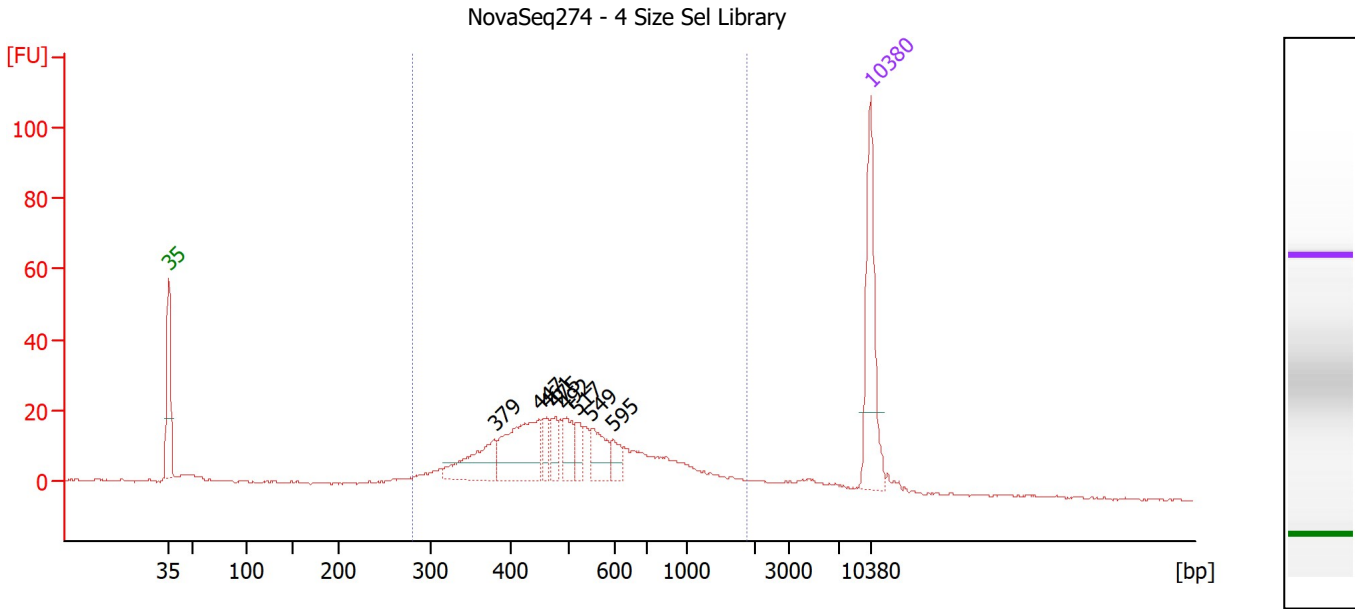
Region table for sample 3 : NovaSeq274 - 3 Size Sel Library

From [bp]	To [bp]	Corr. Area	% of Total	Average Size [bp]	Size distribution in CV [%]	Conc. [pg/μl]	Molarity [pmol/l]	Color
200	1,000	1,838.1	97	519	21.0	2,349.07	7,292.2	Blue

Assay Class: High Sensitivity DNA Assay
 Data Path: Z:\...\Bioanalyzer1_High Sensitivity DNA Assay_2020-10-26_003.xad

Created: 10/26/2020 5:07:06 PM
 Modified: 10/26/2020 5:47:37 PM

Electropherogram Summary Continued ...



Overall Results for sample 4 : NovaSeq274 - 4 Size Sel Library

Number of peaks found: 8 Corr. Area 1: 438.1
 Noise: 0.3

Peak table for sample 4 : NovaSeq274 - 4 Size Sel Library

Peak	Size [bp]	Conc. [pg/μl]	Molarity [pmol/l]	Observations
1	35	125.00	5,411.3	Lower Marker
2	379	53.70	214.9	
3	447	88.45	299.7	
4	461	17.45	57.3	
5	475	17.23	55.0	
6	492	27.20	83.7	
7	517	17.17	50.3	
8	549	28.81	79.5	
9	595	14.68	37.4	
10	10,380	75.00	10.9	Upper Marker

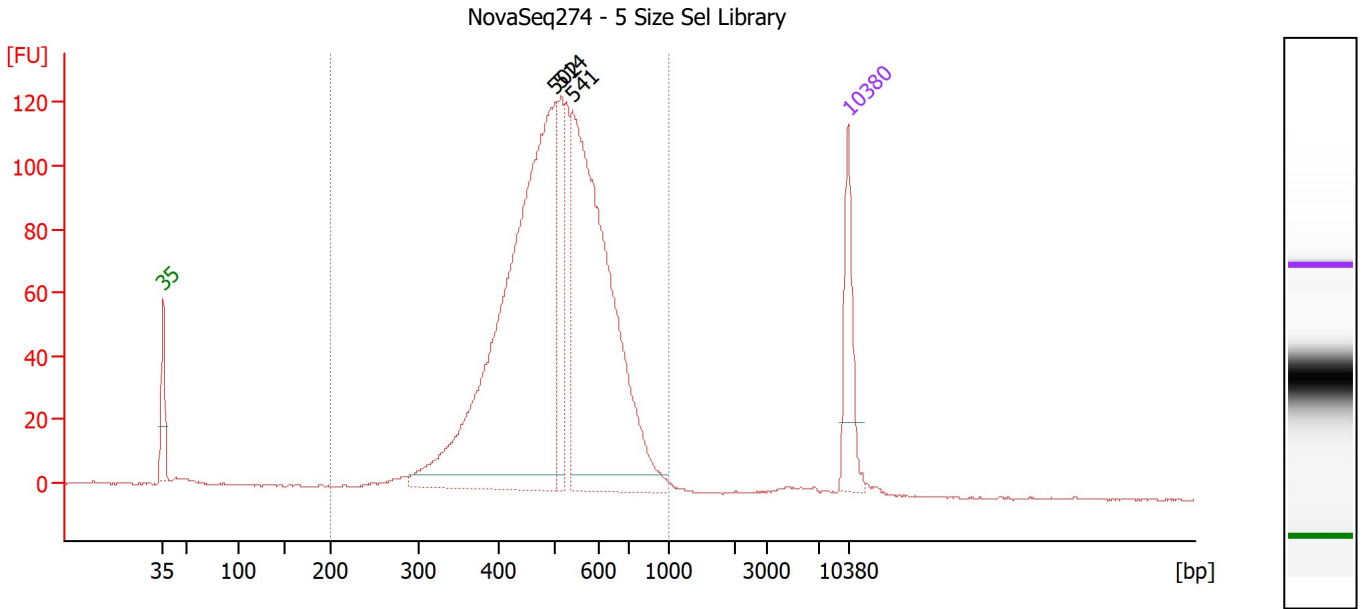
Region table for sample 4 : NovaSeq274 - 4 Size Sel Library

From [bp]	To [bp]	Corr. Area	% of Total	Average Size [bp]	Size distribution in CV [%]	Conc. [pg/μl]	Molarity [pmol/l]	Color
281	1,899	438.1	84	582	49.3	472.32	1,489.1	Blue

Assay Class: High Sensitivity DNA Assay
 Data Path: Z:\...\Bioanalyzer1_High Sensitivity DNA Assay_2020-10-26_003.xad

Created: 10/26/2020 5:07:06 PM
 Modified: 10/26/2020 5:47:37 PM

Electropherogram Summary Continued ...



Overall Results for sample 5 : NovaSeq274 - 5 Size Sel Library

Number of peaks found: 3 Corr. Area 1: 1,743.4
 Noise: 0.3

Peak table for sample 5 : NovaSeq274 - 5 Size Sel Library

Peak	Size [bp]	Conc. [pg/μl]	Molarity [pmol/l]	Observations
1	35	125.00	5,411.3	Lower Marker
2	502	937.57	2,827.6	
3	514	107.70	317.2	
4	541	650.23	1,820.9	
5	10,380	75.00	10.9	Upper Marker

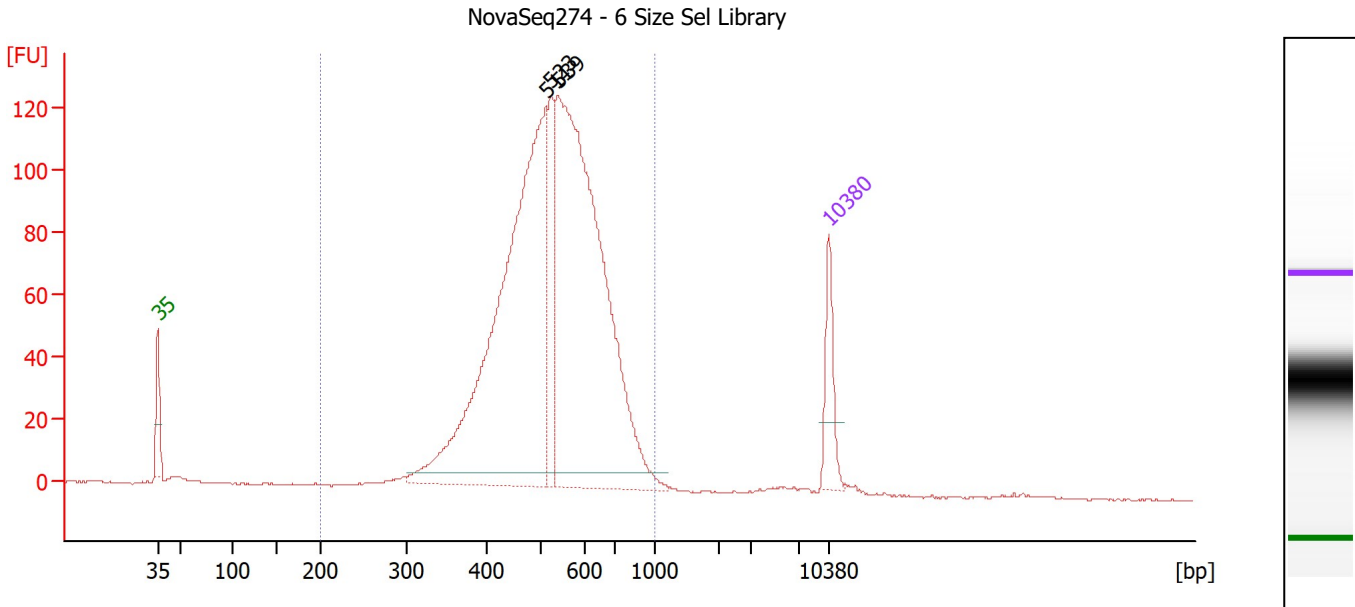
Region table for sample 5 : NovaSeq274 - 5 Size Sel Library

From [bp]	To [bp]	Corr. Area	% of Total	Average Size [bp]	Size distribution in CV [%]	Conc. [pg/μl]	Molarity [pmol/l]	Color
200	1,000	1,743.4	97	513	20.5	1,844.74	5,778.2	Blue

Assay Class: High Sensitivity DNA Assay
 Data Path: Z:\...\Bioanalyzer1_High Sensitivity DNA Assay_2020-10-26_003.xad

Created: 10/26/2020 5:07:06 PM
 Modified: 10/26/2020 5:47:37 PM

Electropherogram Summary Continued ...



Overall Results for sample 6 : NovaSeq274 - 6 Size Sel Library

Number of peaks found: 3 Corr. Area 1: 1,749.5
 Noise: 0.2

Peak table for sample 6 : NovaSeq274 - 6 Size Sel Library

Peak	Size [bp]	Conc. [pg/μl]	Molarity [pmol/l]	Observations
1	35	125.00	5,411.3	Lower Marker
2	511	1,215.48	3,604.8	
3	523	158.53	459.1	
4	539	1,223.42	3,437.5	
5	10,380	75.00	10.9	Upper Marker

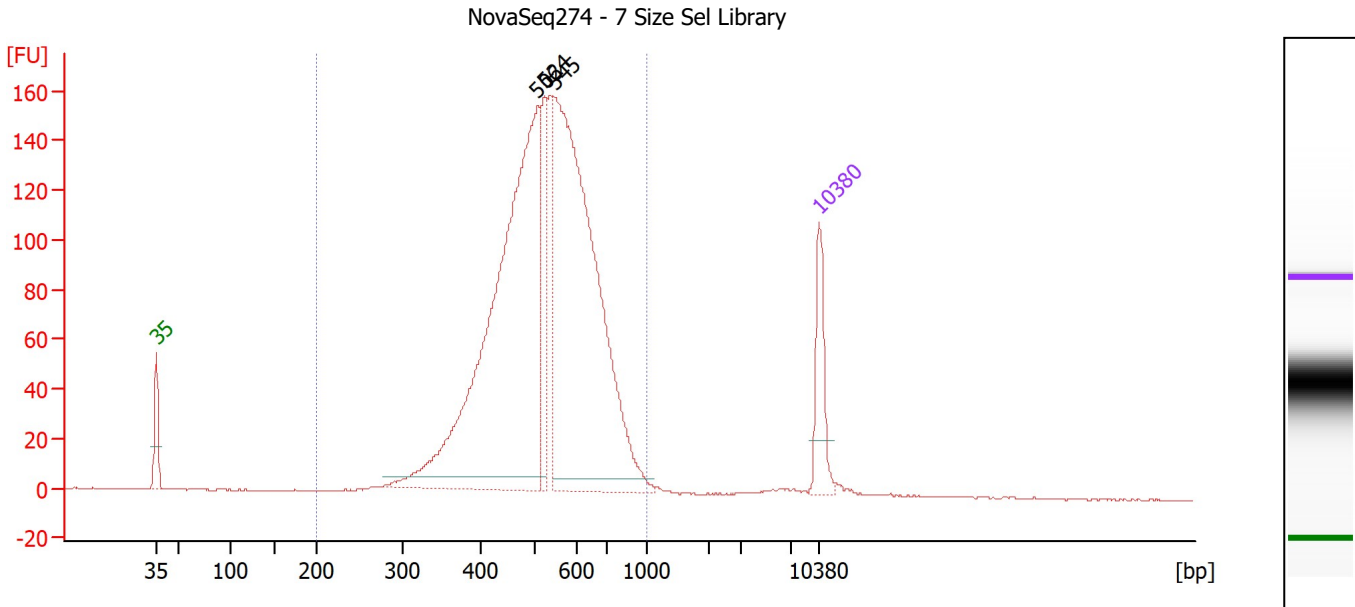
Region table for sample 6 : NovaSeq274 - 6 Size Sel Library

From [bp]	To [bp]	Corr. Area	% of Total	Average Size [bp]	Size distribution in CV [%]	Conc. [pg/μl]	Molarity [pmol/l]	Color
200	1,000	1,749.5	98	534	20.8	2,668.46	8,032.2	Blue

Assay Class: High Sensitivity DNA Assay
 Data Path: Z:\...\Bioanalyzer1_High Sensitivity DNA Assay_2020-10-26_003.xad

Created: 10/26/2020 5:07:06 PM
 Modified: 10/26/2020 5:47:37 PM

Electropherogram Summary Continued ...



Overall Results for sample 7 : NovaSeq274 - 7 Size Sel Library

Number of peaks found: 3 Corr. Area 1: 2,219.7
 Noise: 0.2

Peak table for sample 7 : NovaSeq274 - 7 Size Sel Library

Peak	Size [bp]	Conc. [pg/μl]	Molarity [pmol/l]	Observations
1	35	125.00	5,411.3	Lower Marker
2	506	1,040.26	3,113.7	
3	524	148.56	429.8	
4	545	938.62	2,609.9	
5	10,380	75.00	10.9	Upper Marker

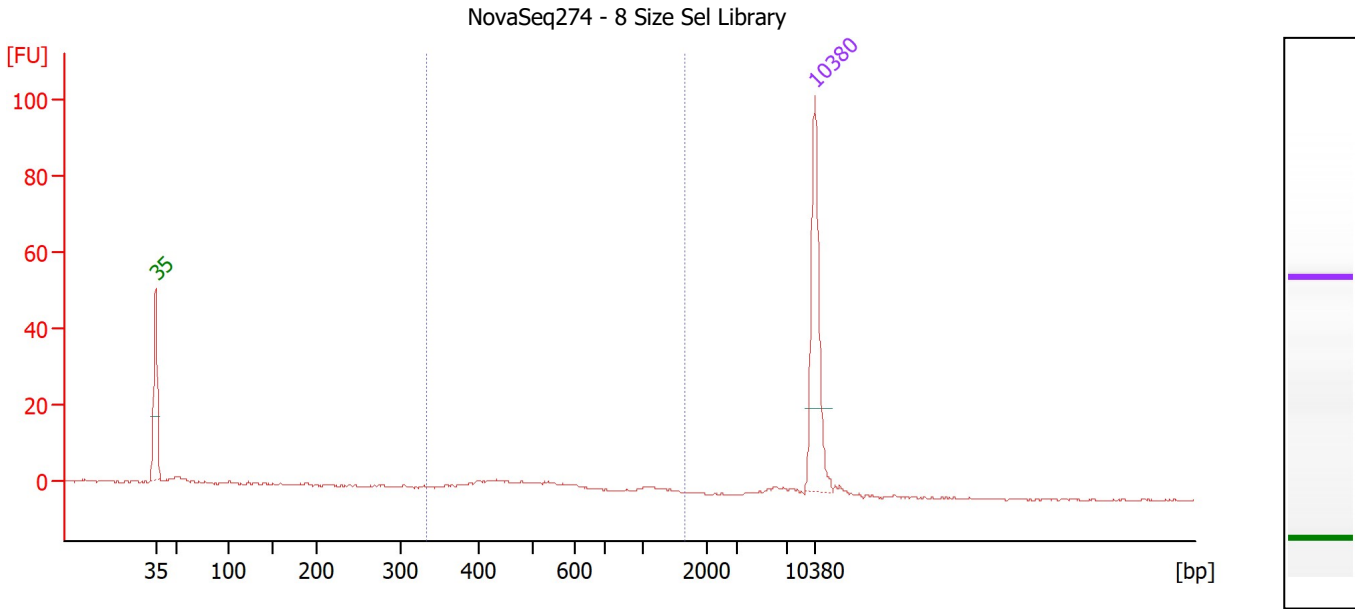
Region table for sample 7 : NovaSeq274 - 7 Size Sel Library

From [bp]	To [bp]	Corr. Area	% of Total	Average Size [bp]	Size distribution in CV [%]	Conc. [pg/μl]	Molarity [pmol/l]	Color
200	1,000	2,219.7	98	533	20.8	2,305.98	6,943.4	Blue

Assay Class: High Sensitivity DNA Assay
 Data Path: Z:\...\Bioanalyzer1_High Sensitivity DNA Assay_2020-10-26_003.xad

Created: 10/26/2020 5:07:06 PM
 Modified: 10/26/2020 5:47:37 PM

Electropherogram Summary Continued ...



Overall Results for sample 8 : NovaSeq274 - 8 Size Sel Library

Number of peaks found: 0 Corr. Area 1: 36.1
 Noise: 0.2

Peak table for sample 8 : NovaSeq274 - 8 Size Sel Library

Peak	Size [bp]	Conc. [pg/μl]	Molarity [pmol/l]	Observations
1	35	125.00	5,411.3	Lower Marker
2	10,380	75.00	10.9	Upper Marker

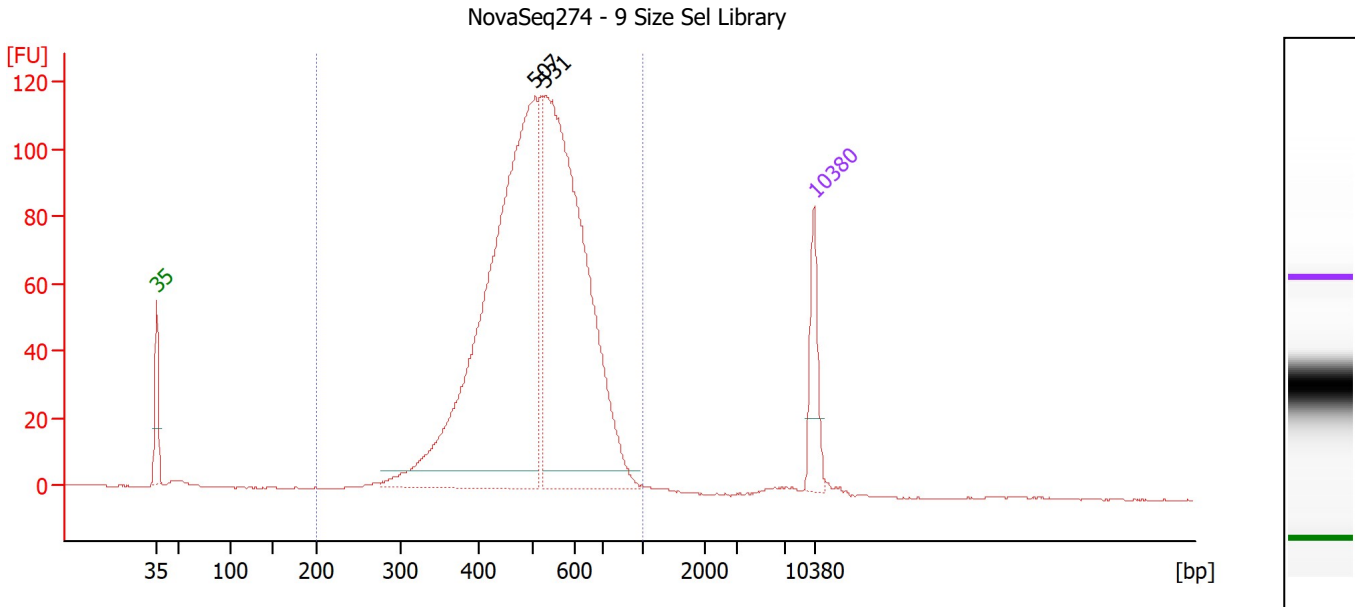
Region table for sample 8 : NovaSeq274 - 8 Size Sel Library

From [bp]	To [bp]	Corr. Area	% of Total	Average Size [bp]	Size distribution in CV [%]	Conc. [pg/μl]	Molarity [pmol/l]	Color
333	1,647	36.1	50	581	44.2	41.58	126.5	Blue

Assay Class: High Sensitivity DNA Assay
 Data Path: Z:\...\Bioanalyzer1_High Sensitivity DNA Assay_2020-10-26_003.xad

Created: 10/26/2020 5:07:06 PM
 Modified: 10/26/2020 5:47:37 PM

Electropherogram Summary Continued ...



Overall Results for sample 9 : NovaSeq274 - 9 Size Sel Library

Number of peaks found: 2 Corr. Area 1: 1,647.3
 Noise: 0.3

Peak table for sample 9 : NovaSeq274 - 9 Size Sel Library

Peak	Size [bp]	Conc. [pg/μl]	Molarity [pmol/l]	Observations
1	35	125.00	5,411.3	Lower Marker
2	507	1,206.86	3,605.6	
3	531	982.20	2,802.2	
4	10,380	75.00	10.9	Upper Marker

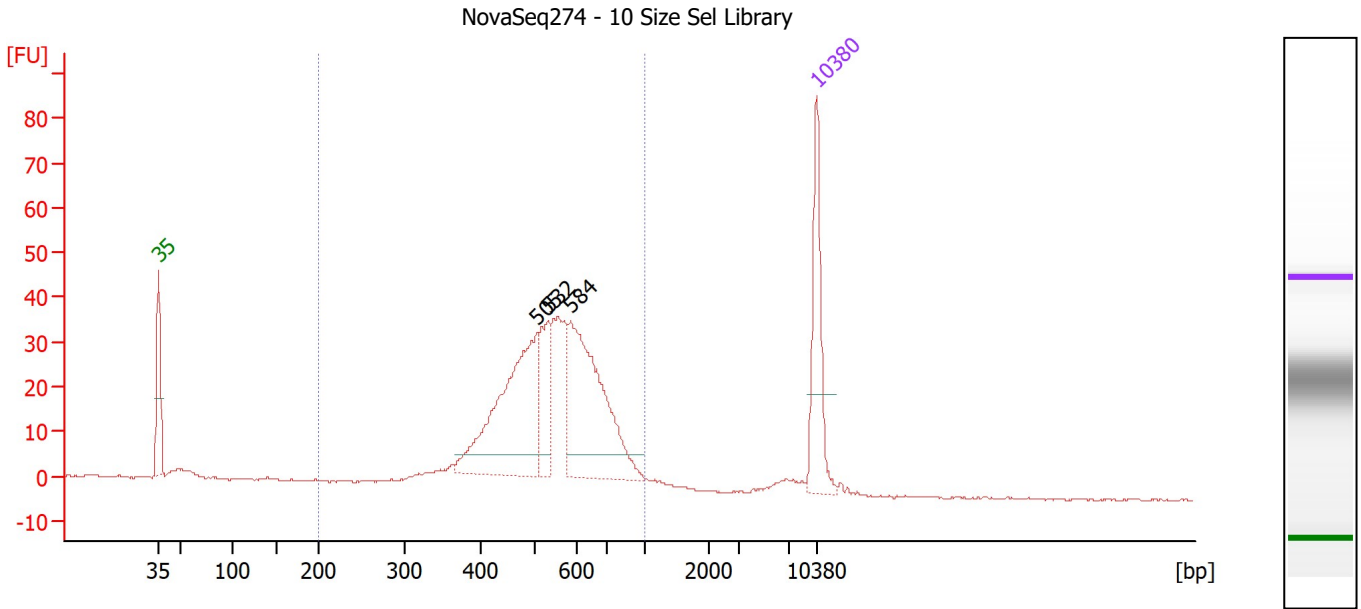
Region table for sample 9 : NovaSeq274 - 9 Size Sel Library

From [bp]	To [bp]	Corr. Area	% of Total	Average Size [bp]	Size distribution in CV [%]	Conc. [pg/μl]	Molarity [pmol/l]	Color
200	1,000	1,647.3	98	517	19.9	2,362.76	7,310.9	Blue

Assay Class: High Sensitivity DNA Assay
 Data Path: Z:\...\Bioanalyzer1_High Sensitivity DNA Assay_2020-10-26_003.xad

Created: 10/26/2020 5:07:06 PM
 Modified: 10/26/2020 5:47:37 PM

Electropherogram Summary Continued ...



Overall Results for sample 10 : NovaSeq274 - 10 Size Sel Library

Number of peaks found: 3 Corr. Area 1: 521.8
 Noise: 0.2

Peak table for sample 10 : NovaSeq274 - 10 Size Sel Library

Peak	Size [bp]	Conc. [pg/μl]	Molarity [pmol/l]	Observations
1	35	125.00	5,411.3	Lower Marker
2	505	223.83	671.3	
3	532	65.05	185.4	
4	584	201.15	521.5	
5	10,380	75.00	10.9	Upper Marker

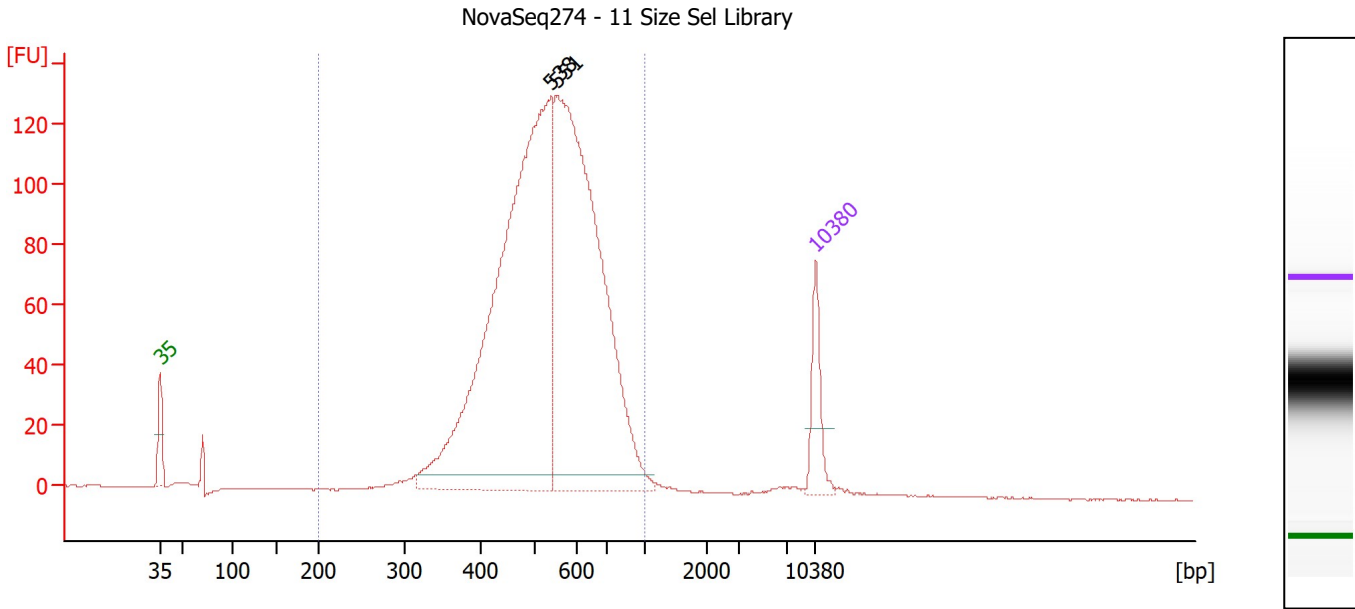
Region table for sample 10 : NovaSeq274 - 10 Size Sel Library

From [bp]	To [bp]	Corr. Area	% of Total	Average Size [bp]	Size distribution in CV [%]	Conc. [pg/μl]	Molarity [pmol/l]	Color
200	1,000	521.8	95	549	21.3	677.09	1,985.7	Blue

Assay Class: High Sensitivity DNA Assay
 Data Path: Z:\...\Bioanalyzer1_High Sensitivity DNA Assay_2020-10-26_003.xad

Created: 10/26/2020 5:07:06 PM
 Modified: 10/26/2020 5:47:37 PM

Electropherogram Summary Continued ...



Overall Results for sample 11 : NovaSeq274 - 11 Size Sel Library

Number of peaks found: 2 Corr. Area 1: 1,873.7
 Noise: 0.2

Peak table for sample 11 : NovaSeq274 - 11 Size Sel Library

Peak	Size [bp]	Conc. [pg/μl]	Molarity [pmol/l]	Observations
1	35	125.00	5,411.3	Lower Marker
2	538	1,402.85	3,948.2	
3	551	1,177.49	3,238.0	
4	10,380	75.00	10.9	Upper Marker

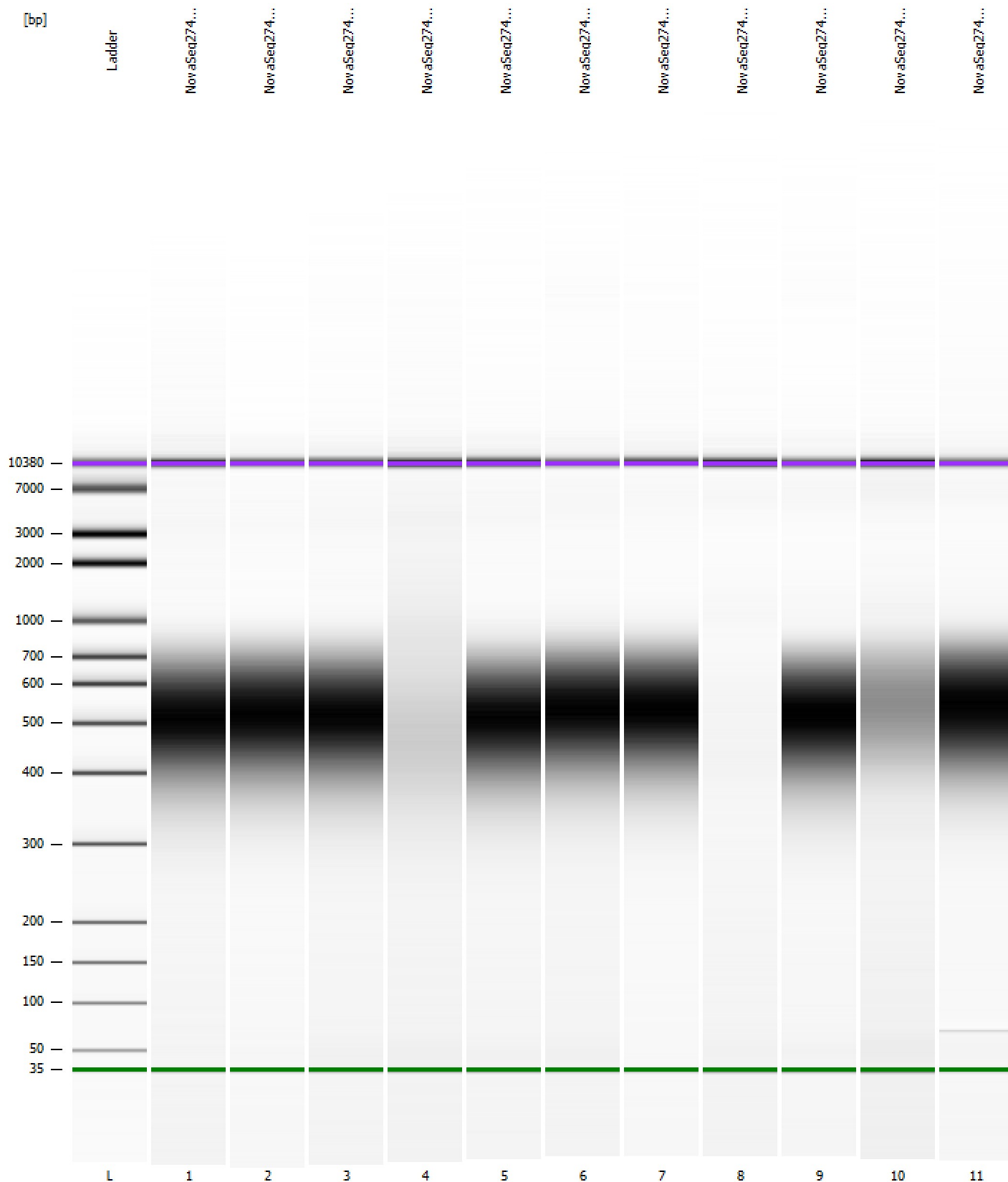
Region table for sample 11 : NovaSeq274 - 11 Size Sel Library

From [bp]	To [bp]	Corr. Area	% of Total	Average Size [bp]	Size distribution in CV [%]	Conc. [pg/μl]	Molarity [pmol/l]	Color
200	1,000	1,873.7	97	544	21.3	2,685.72	7,936.0	Blue

Assay Class: High Sensitivity DNA Assay
Data Path: Z:\...\Bioanalyzer1_High Sensitivity DNA Assay_2020-10-26_003.xad

Created: 10/26/2020 5:07:06 PM
Modified: 10/26/2020 5:47:37 PM

Gel Image



Assay Class: High Sensitivity DNA Assay
 Data Path: Z:\...\Bioanalyzer1_High Sensitivity DNA Assay_2020-10-26_003.xad

Created: 10/26/2020 5:07:06 PM
 Modified: 10/26/2020 5:47:37 PM

Run Logbook

Description	Number	Source	Category	Sub Category	Time	Time Zone	User	Host
Run ended on port 1 (Number of wells acquired: 12)		Instrument	Run		10/26/2020 5:47:33 PM	(GMT --07:00) Pacific Standard Time	sbsuser	DESKTOP-4UNV VOB
Run started on port 1 (File: Z:\XADs\2020-10-26\Bioanalyzer1_High Sensitivity DNA Assay_2020-10-26_003.xad)		Instrument	Run		10/26/2020 5:07:07 PM	(GMT --07:00) Pacific Standard Time	sbsuser	DESKTOP-4UNV VOB
Product Number : G2938C		Instrument	Run		10/26/2020 5:07:07 PM	(GMT --07:00) Pacific Standard Time	sbsuser	DESKTOP-4UNV VOB
Name :		Instrument	Run		10/26/2020 5:07:07 PM	(GMT --07:00) Pacific Standard Time	sbsuser	DESKTOP-4UNV VOB
Vendor : Agilent Technologies		Instrument	Run		10/26/2020 5:07:07 PM	(GMT --07:00) Pacific Standard Time	sbsuser	DESKTOP-4UNV VOB
Serial# : DE34903152		Instrument	Run		10/26/2020 5:07:07 PM	(GMT --07:00) Pacific Standard Time	sbsuser	DESKTOP-4UNV VOB
Firmware : C.01.069		Instrument	Run		10/26/2020 5:07:07 PM	(GMT --07:00) Pacific Standard Time	sbsuser	DESKTOP-4UNV VOB
Cartridge : Electrode		Instrument	Run		10/26/2020 5:07:07 PM	(GMT --07:00) Pacific Standard Time	sbsuser	DESKTOP-4UNV VOB