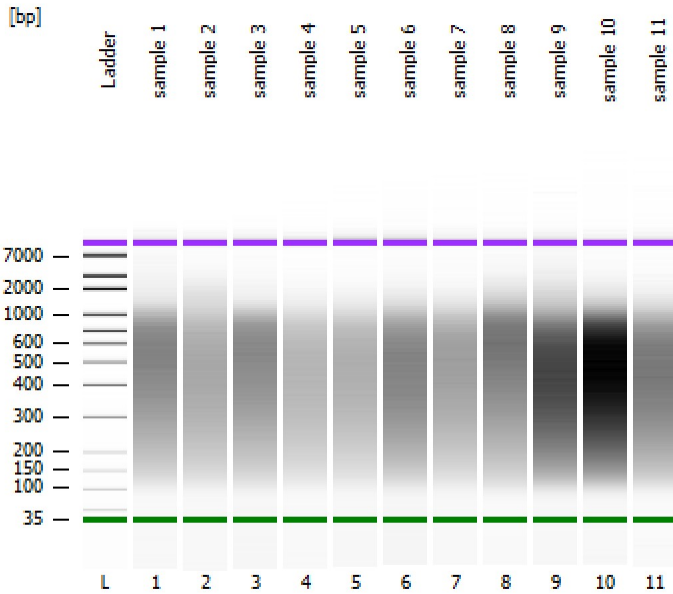


Assay Class: High Sensitivity DNA Assay
Data Path: Z:\...analyzerDPSC1_High Sensitivity DNA Assay_2020-03-13_001.xad

Created: 3/13/2020 10:42:15 AM
Modified: 3/13/2020 11:23:37 AM

Electrophoresis File Run Summary



Instrument Information:

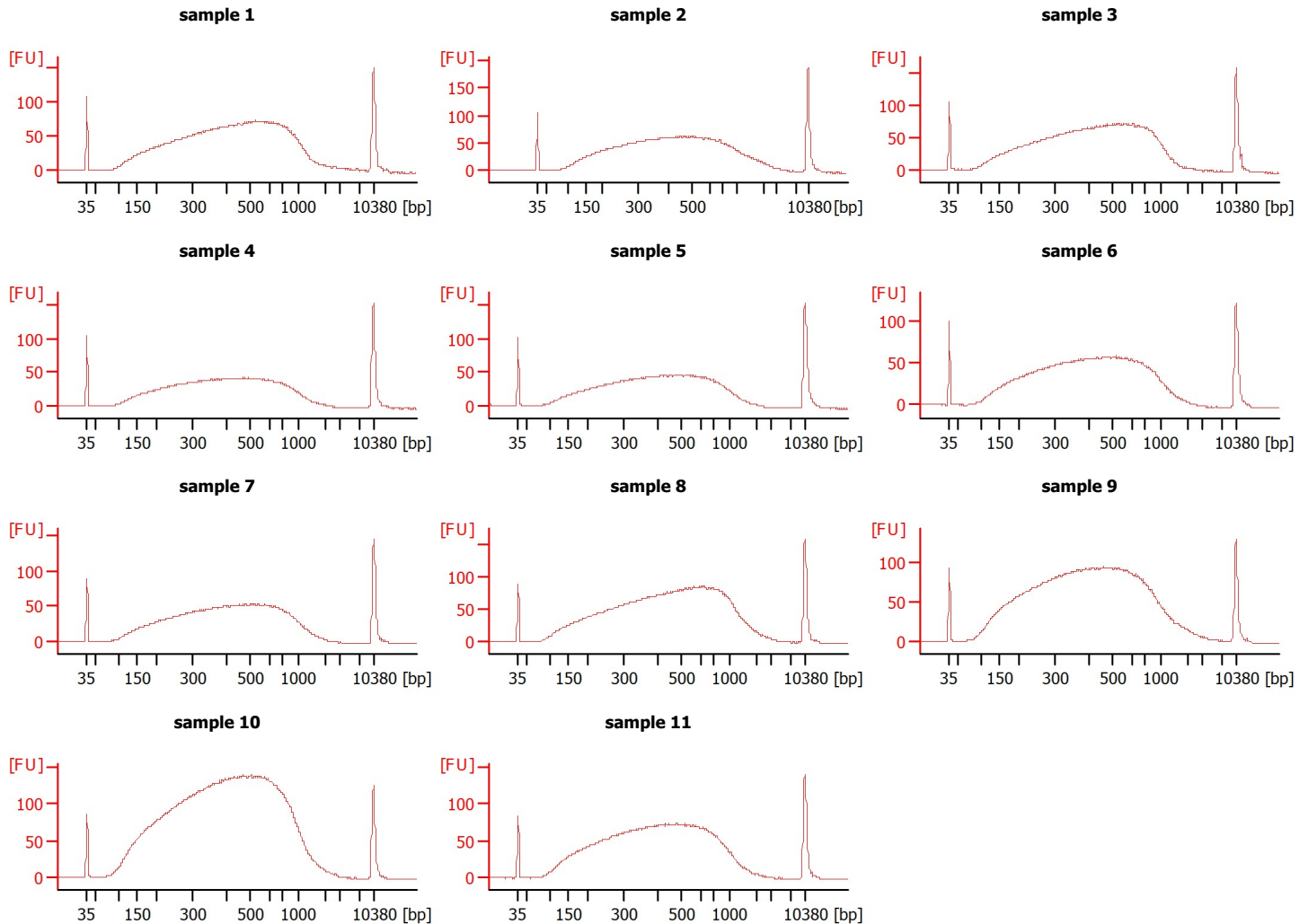
Instrument Name: DE34903152 Firmware: C.01.069
Serial#: DE34903152 Type: G2938C

Assay Information:

Assay Origin Path: C:\Program Files (x86)\Agilent\2100 bioanalyzer\2100 expert\assays\dsDNA\High Sensitivity DNA.xsy
Assay Class: High Sensitivity DNA Assay
Version: 1.03
Assay Comments: Copyright © 2003-2010 Agilent Technologies

Chip Information:

Chip Lot #: Reagent Kit Lot #: Chip Comments:



Assay Class: High Sensitivity DNA Assay
 Data Path: Z:\...analyzerDPSC1_High Sensitivity DNA Assay_2020-03-13_001.xad

Created: 3/13/2020 10:42:15 AM
 Modified: 3/13/2020 11:23:37 AM

Electrophoresis File Run Summary (Chip Summary)

Sample Name	Sample Comment	Rest. Digest	Status	Observation	Result Label	Result Color
sample 1		<input type="checkbox"/>	✓			
sample 2		<input type="checkbox"/>	✓			
sample 3		<input type="checkbox"/>	✓			
sample 4		<input type="checkbox"/>	✓			
sample 5		<input type="checkbox"/>	✓			
sample 6		<input type="checkbox"/>	✓			
sample 7		<input type="checkbox"/>	✓			
sample 8		<input type="checkbox"/>	✓			
sample 9		<input type="checkbox"/>	✓			
sample 10		<input type="checkbox"/>	✓			
sample 11		<input type="checkbox"/>	✓			
Ladder		<input type="checkbox"/>	✓			

Chip Lot #

Reagent Kit Lot #

Chip Comments :

Assay Class: High Sensitivity DNA Assay
 Data Path: Z:\...analyzerDPSC1_High Sensitivity DNA Assay_2020-03-13_001.xad

Created: 3/13/2020 10:42:15 AM
 Modified: 3/13/2020 11:23:37 AM

Electrophoresis Assay Details

General Analysis Settings

Number of Available Sample and Ladder Wells (Max.) : 12
 Minimum Visible Range [s] : 32
 Maximum Visible Range [s] : 138
 Start Analysis Time Range [s] : 33
 End Analysis Time Range [s] : 137.5
 Ladder Concentration [pg/μl] : 1950
 Uses Standard Area for Ladder Fragments
 Lower Marker Concentration [pg/μl] : 125
 Upper Marker Concentration [pg/μl] : 75
 Used Upper Marker for Quantitation
 Standard Curve Fit is Point to Point
 Show Data Aligned to Lower and Upper Marker

Integrator Settings

Integration Start Time [s] : 33.05
 Integration End Time [s] : 137
 Slope Threshold : 0.8
 Height Threshold [FU] : 5
 Area Threshold : 0.1
 Width Threshold [s] : 0.6
 Baseline Plateau [s] : 0.5

Filter Settings

Filter Width [s] : 0.5
 Polynomial Order : 4

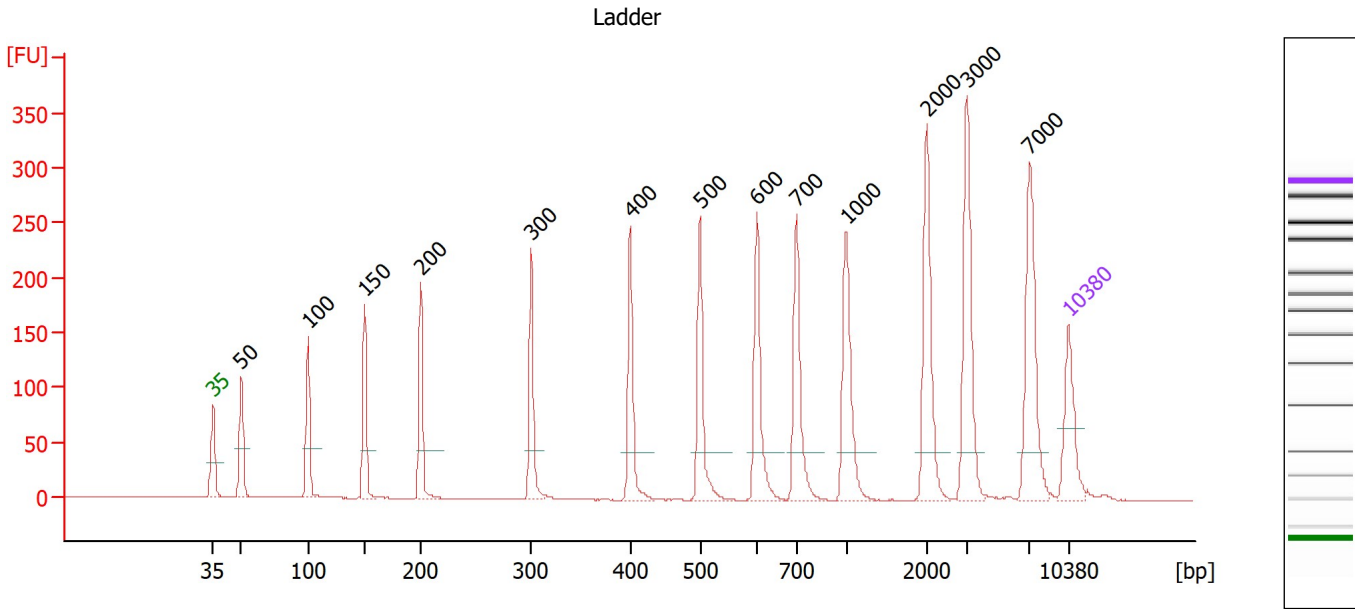
Ladder

Ladder Peak	Size	Area
1	35	160
2	50	210
3	100	208
4	150	221
5	200	242
6	300	270
7	400	305
8	500	306
9	600	336
10	700	321
11	1000	366
12	2000	413
13	3000	411
14	7000	400
15	10380	214

Assay Class: High Sensitivity DNA Assay
 Data Path: Z:\...analyzerDPSC1_High Sensitivity DNA Assay_2020-03-13_001.xad

Created: 3/13/2020 10:42:15 AM
 Modified: 3/13/2020 11:23:37 AM

Electropherogram Summary



Overall Results for Ladder

Noise: 0.2

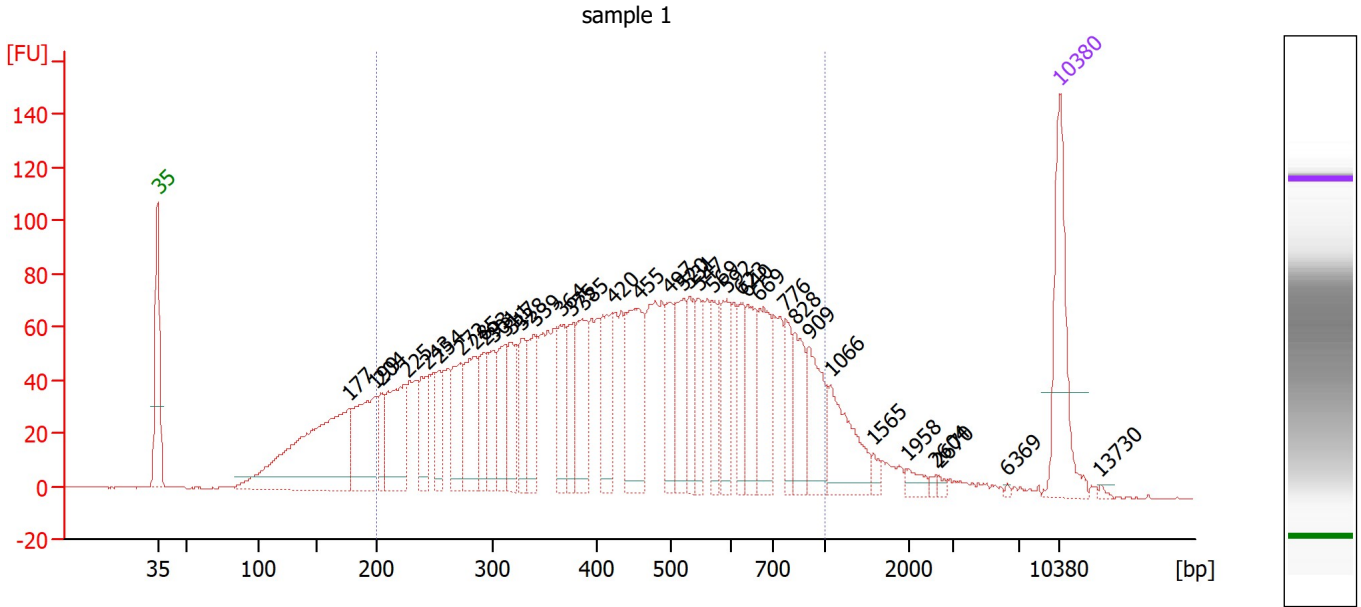
Peak table for Ladder

Peak	Size [bp]	Conc. [pg/μl]	Molarity [pmol/l]	Observations
1	35	125.00	5,411.3	Lower Marker
2	50	150.00	4,545.5	Ladder Peak
3	100	150.00	2,272.7	Ladder Peak
4	150	150.00	1,515.2	Ladder Peak
5	200	150.00	1,136.4	Ladder Peak
6	300	150.00	757.6	Ladder Peak
7	400	150.00	568.2	Ladder Peak
8	500	150.00	454.5	Ladder Peak
9	600	150.00	378.8	Ladder Peak
10	700	150.00	324.7	Ladder Peak
11	1,000	150.00	227.3	Ladder Peak
12	2,000	150.00	113.6	Ladder Peak
13	3,000	150.00	75.8	Ladder Peak
14	7,000	150.00	32.5	Ladder Peak
15	10,380	75.00	10.9	Upper Marker

Assay Class: High Sensitivity DNA Assay
 Data Path: Z:\...analyzerDPSC1_High Sensitivity DNA Assay_2020-03-13_001.xad

Created: 3/13/2020 10:42:15 AM
 Modified: 3/13/2020 11:23:37 AM

Electropherogram Summary Continued ...



Overall Results for sample 1 : sample 1

Number of peaks found: 38 Corr. Area 1: 2,765.4
 Noise: 0.3

Peak table for sample 1 : sample 1

Peak	Size [bp]	Conc. [pg/μl]	Molarity [pmol/l]	Observations
1	35	125.00	5,411.3	Lower Marker
2	177	247.69	2,126.0	
3	199	104.92	798.8	
4	204	32.13	238.8	
5	225	93.44	628.6	
6	243	47.30	294.7	
7	254	35.15	209.8	
8	272	56.90	317.2	
9	285	71.38	379.6	
10	293	47.69	246.8	
11	301	42.24	213.0	
12	311	50.93	247.8	
13	317	51.24	244.7	
14	328	45.63	211.1	
15	339	47.99	214.2	
16	364	51.54	214.4	
17	375	42.38	171.2	
18	385	64.89	255.1	
19	420	66.54	240.1	
20	455	102.51	341.2	
21	497	44.85	136.6	
22	520	57.53	167.6	
23	531	46.37	132.4	
24	547	37.20	103.1	
25	569	33.00	87.9	
26	592	44.31	113.5	

Assay Class: High Sensitivity DNA Assay
 Data Path: Z:\...analyzerDPSC1_High Sensitivity DNA Assay_2020-03-13_001.xad

Created: 3/13/2020 10:42:15 AM
 Modified: 3/13/2020 11:23:37 AM

Electropherogram Summary Continued ...

... Peak table for sample 1 : sample 1

Peak	Size [bp]	Conc. [pg/μl]	Molarity [pmol/l]	Observations
27	623	36.04	87.6	
28	640	47.45	112.4	
29	669	62.84	142.2	
30	776	28.91	56.4	
31	828	43.85	80.3	
32	909	55.51	92.5	
33	1,066	59.05	83.9	
34	1,565	5.89	5.7	
35	1,958	8.71	6.7	
36	2,604	2.25	1.3	
37	2,670	2.86	1.6	
38	6,369	1.14	0.3	
39	▶ 10,380	75.00	10.9	Upper Marker
40	13,730	0.00	0.0	

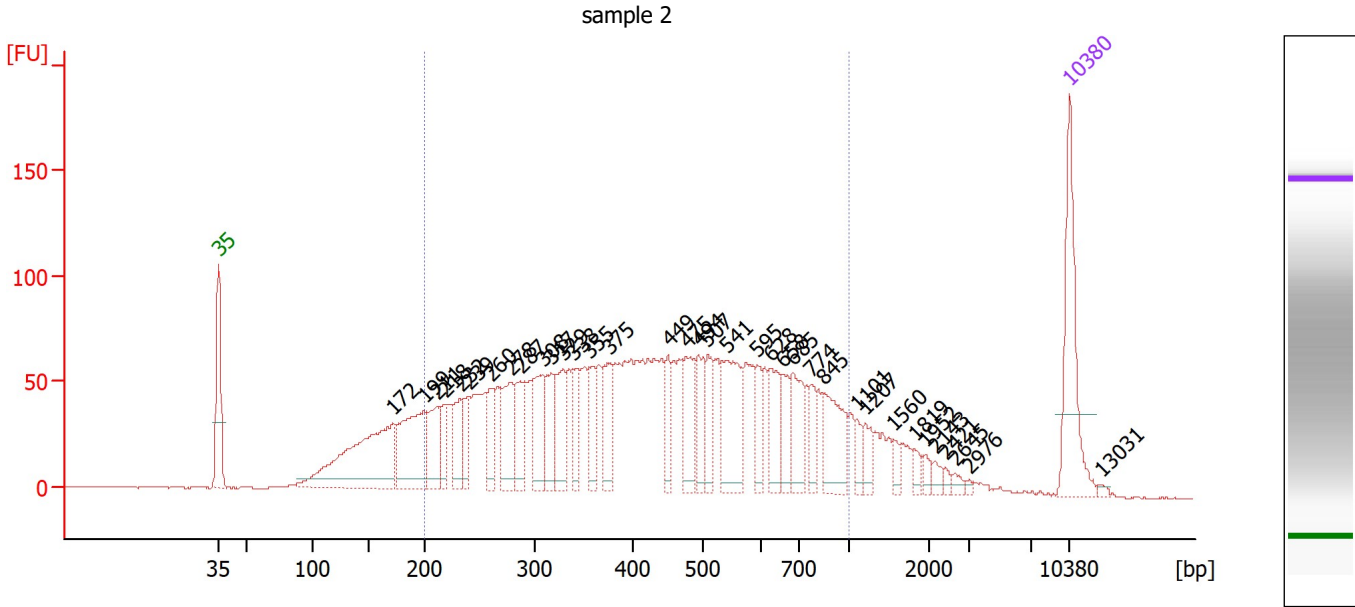
Region table for sample 1 : sample 1

From [bp]	To [bp]	Corr. Area	% of Total	Average Size [bp]	Size distribution in CV [%]	Conc. [pg/μl]	Molarity [pmol/l]	Color
200	1,000	2,765.4	82	471	39.0	2,056.71	8,245.0	■

Assay Class: High Sensitivity DNA Assay
 Data Path: Z:\...analyzerDPSC1_High Sensitivity DNA Assay_2020-03-13_001.xad

Created: 3/13/2020 10:42:15 AM
 Modified: 3/13/2020 11:23:37 AM

Electropherogram Summary Continued ...



Overall Results for sample 2 : sample 2

Number of peaks found: 36 Corr. Area 1: 2,577.3
 Noise: 0.3

Peak table for sample 2 : sample 2

Peak	Size [bp]	Conc. [pg/μl]	Molarity [pmol/l]	Observations
1	35	125.00	5,411.3	Lower Marker
2	172	208.54	1,840.9	
3	199	121.67	924.6	
4	211	51.41	369.2	
5	218	30.04	208.5	
6	232	37.27	243.5	
7	239	31.08	196.9	
8	260	32.18	187.8	
9	278	56.86	309.4	
10	287	47.29	249.9	
11	308	62.30	306.6	
12	317	42.02	201.2	
13	329	49.42	227.6	
14	338	34.69	155.4	
15	355	36.20	154.3	
16	375	44.97	181.8	
17	449	29.13	98.2	
18	475	53.21	169.6	
19	494	37.26	114.3	
20	507	34.61	103.3	
21	541	81.62	228.5	
22	595	25.05	63.8	
23	628	39.49	95.3	
24	658	26.50	61.0	
25	685	45.23	100.1	
26	774	21.69	42.5	

Assay Class: High Sensitivity DNA Assay
 Data Path: Z:\...analyzerDPSC1_High Sensitivity DNA Assay_2020-03-13_001.xad

Created: 3/13/2020 10:42:15 AM
 Modified: 3/13/2020 11:23:37 AM

Electropherogram Summary Continued ...

... Peak table for sample 2 : sample 2

Peak	Size [bp]	Conc. [pg/μl]	Molarity [pmol/l]	Observations
27	845	55.32	99.2	
28	1,101	10.90	15.0	
29	1,207	16.82	21.1	
30	1,560	8.47	8.2	
31	1,819	7.40	6.2	
32	1,952	6.67	5.2	
33	2,143	6.28	4.4	
34	2,421	3.56	2.2	
35	2,645	4.60	2.6	
36	2,976	1.93	1.0	
37	10,380	75.00	10.9	Upper Marker
38	13,031	0.00	0.0	

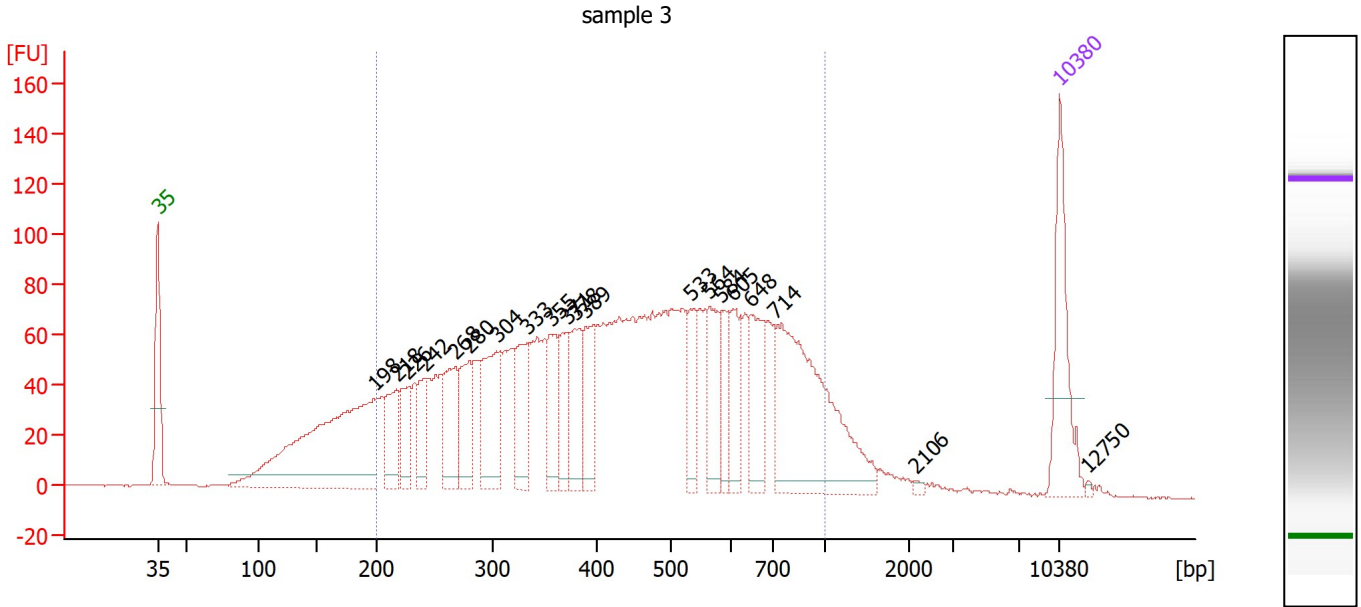
Region table for sample 2 : sample 2

From [bp]	To [bp]	Corr. Area	% of Total	Average Size [bp]	Size distribution in CV [%]	Conc. [pg/μl]	Molarity [pmol/l]	Color
200	1,000	2,577.3	79	456	39.7	1,707.71	7,059.3	

Assay Class: High Sensitivity DNA Assay
 Data Path: Z:\...analyzerDPSC1_High Sensitivity DNA Assay_2020-03-13_001.xad

Created: 3/13/2020 10:42:15 AM
 Modified: 3/13/2020 11:23:37 AM

Electropherogram Summary Continued ...



Overall Results for sample 3 : sample 3

Number of peaks found: 20 Corr. Area 1: 2,768.0
 Noise: 0.3

Peak table for sample 3 : sample 3

Peak	Size [bp]	Conc. [pg/μl]	Molarity [pmol/l]	Observations
1	35	125.00	5,411.3	Lower Marker
2	198	338.06	2,586.5	
3	218	62.31	433.5	
4	226	48.83	327.1	
5	242	42.67	267.1	
6	268	74.09	419.3	
7	280	64.05	346.5	
8	304	101.82	507.9	
9	333	74.03	337.0	
10	355	57.68	245.9	
11	371	48.11	196.6	
12	378	62.63	251.1	
13	389	62.38	243.0	
14	533	45.97	130.8	
15	564	59.36	159.4	
16	584	32.36	83.9	
17	605	43.71	109.5	
18	648	68.35	159.9	
19	714	242.69	515.0	
20	2,106	2.57	1.8	
21	10,380	75.00	10.9	Upper Marker
22	12,750	0.00	0.0	

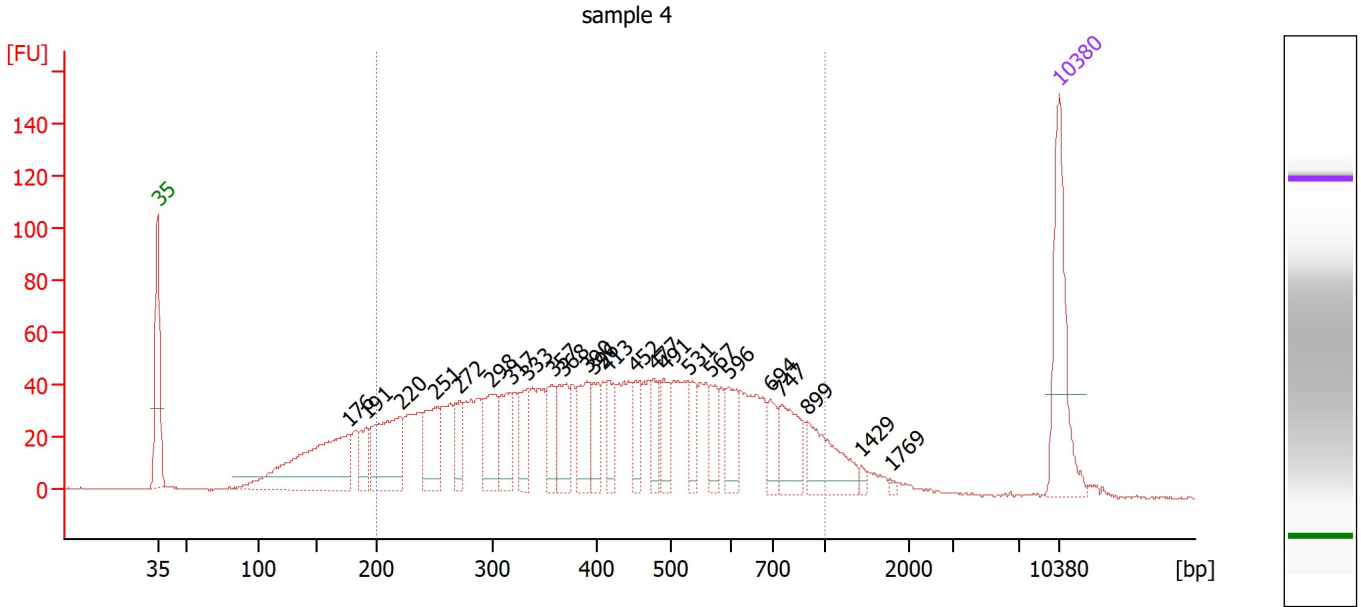
Region table for sample 3 : sample 3

From [bp]	To [bp]	Corr. Area	% of Total	Average Size [bp]	Size distribution in CV [%]	Conc. [pg/μl]	Molarity [pmol/l]	Color
200	1,000	2,768.0	83	470	39.1	2,038.84	8,186.6	Blue

Assay Class: High Sensitivity DNA Assay
 Data Path: Z:\...analyzerDPSC1_High Sensitivity DNA Assay_2020-03-13_001.xad

Created: 3/13/2020 10:42:15 AM
 Modified: 3/13/2020 11:23:37 AM

Electropherogram Summary Continued ...



Overall Results for sample 4 : sample 4

Number of peaks found: 24 Corr. Area 1: 1,721.6
 Noise: 0.2

Peak table for sample 4 : sample 4

Peak	Size [bp]	Conc. [pg/μl]	Molarity [pmol/l]	Observations
1	35	125.00	5,411.3	Lower Marker
2	176	169.03	1,451.2	
3	191	27.17	215.1	
4	220	98.75	680.0	
5	251	59.93	362.0	
6	272	32.01	178.6	
7	298	56.69	288.0	
8	317	43.58	208.5	
9	333	35.55	161.8	
10	357	34.96	148.6	
11	368	44.08	181.6	
12	390	44.28	171.9	
13	396	27.53	105.2	
14	413	23.80	87.2	
15	452	25.04	83.9	
16	477	22.98	73.0	
17	491	27.86	86.0	
18	531	24.51	70.0	
19	567	22.51	60.2	
20	596	29.50	75.0	
21	694	22.08	48.2	
22	747	45.16	91.5	
23	899	52.22	88.0	
24	1,429	3.81	4.0	
25	1,769	1.72	1.5	
26	10,380	75.00	10.9	Upper Marker

Assay Class: High Sensitivity DNA Assay
 Data Path: Z:\...analyzerDPSC1_High Sensitivity DNA Assay_2020-03-13_001.xad

Created: 3/13/2020 10:42:15 AM
 Modified: 3/13/2020 11:23:37 AM

Electropherogram Summary Continued ...

... Region table for sample 4 :

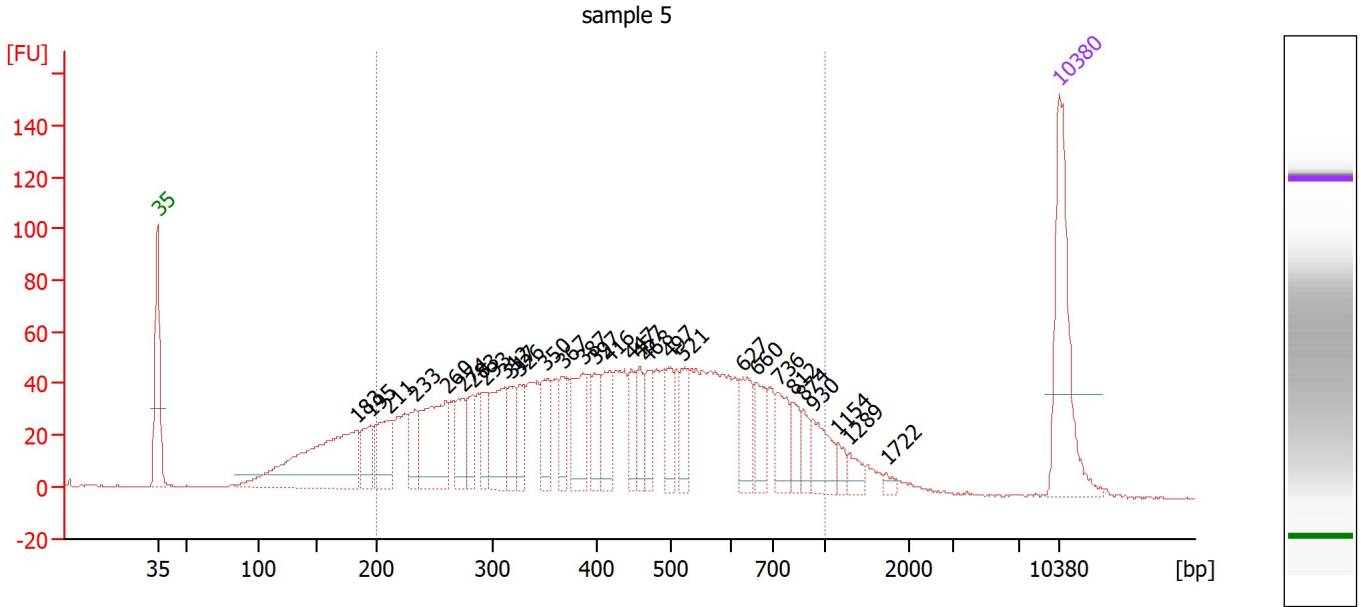
sample 4

From [bp]	To [bp]	Corr. Area	% of Total	Average Size [bp]	Size distribution in CV [%]	Conc. [pg/μl]	Molarity [pmol/l]	Color
200	1,000	1,721.6	82	451	39.4	1,301.27	5,409.2	■

Assay Class: High Sensitivity DNA Assay
 Data Path: Z:\...analyzerDPSC1_High Sensitivity DNA Assay_2020-03-13_001.xad

Created: 3/13/2020 10:42:15 AM
 Modified: 3/13/2020 11:23:37 AM

Electropherogram Summary Continued ...



Overall Results for sample 5 : sample 5

Number of peaks found: 30 Corr. Area 1: 1,834.7
 Noise: 0.3

Peak table for sample 5 : sample 5

Peak	Size [bp]	Conc. [pg/μl]	Molarity [pmol/l]	Observations
1	35	125.00	5,411.3	Lower Marker
2	183	153.70	1,273.6	
3	195	32.17	249.8	
4	211	46.15	332.0	
5	233	28.58	185.6	
6	260	84.09	490.3	
7	274	31.95	176.8	
8	283	26.86	144.0	
9	293	23.81	123.1	
10	312	49.97	242.4	
11	317	29.33	140.2	
12	326	23.68	110.2	
13	350	30.92	133.9	
14	367	28.57	117.9	
15	387	41.50	162.6	
16	397	27.65	105.5	
17	416	31.04	112.9	
18	447	22.15	75.1	
19	457	22.10	73.2	
20	468	25.17	81.5	
21	497	25.15	76.7	
22	521	24.27	70.6	
23	627	30.50	73.7	
24	660	27.83	63.9	
25	736	26.88	55.4	
26	812	15.63	29.2	

Assay Class: High Sensitivity DNA Assay
 Data Path: Z:\...analyzerDPSC1_High Sensitivity DNA Assay_2020-03-13_001.xad

Created: 3/13/2020 10:42:15 AM
 Modified: 3/13/2020 11:23:37 AM

Electropherogram Summary Continued ...

... Peak table for sample 5 : sample 5

Peak	Size [bp]	Conc. [pg/μl]	Molarity [pmol/l]	Observations
27	874	13.49	23.4	
28	930	26.60	43.4	
29	1,154	8.05	10.6	
30	1,289	10.01	11.8	
31	1,722	3.20	2.8	
32	10,380	75.00	10.9	Upper Marker

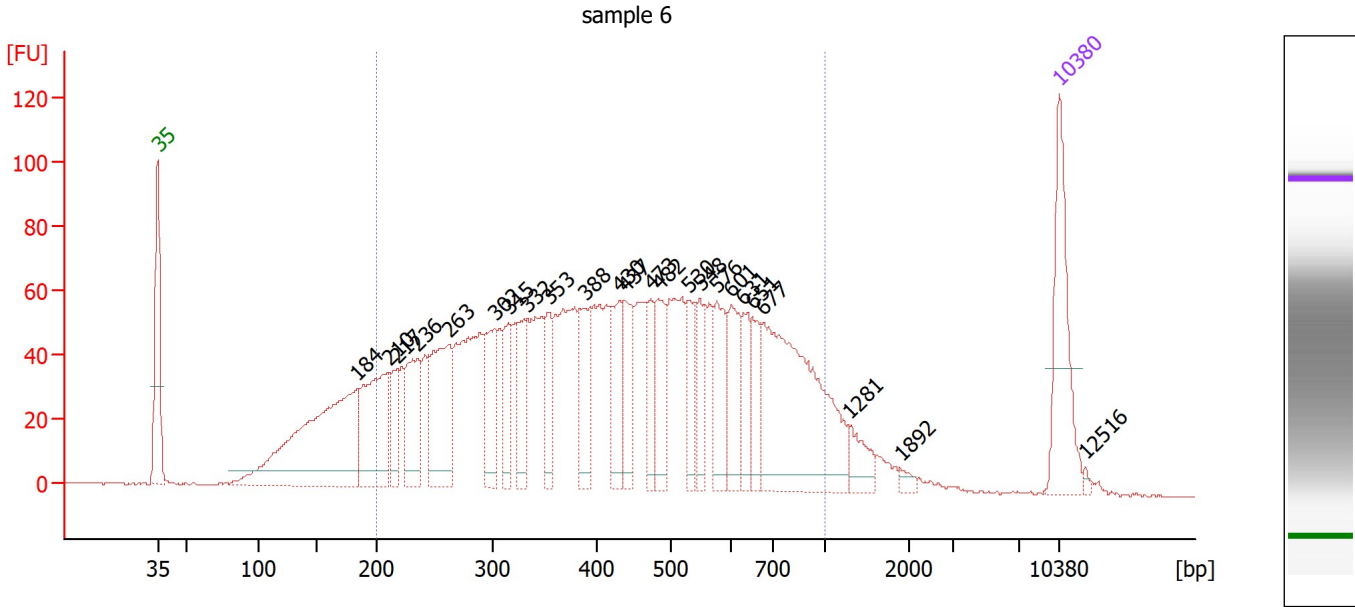
Region table for sample 5 : sample 5

From [bp]	To [bp]	Corr. Area	% of Total	Average Size [bp]	Size distribution in CV [%]	Conc. [pg/μl]	Molarity [pmol/l]	Color
200	1,000	1,834.7	83	456	38.9	1,177.17	4,828.9	

Assay Class: High Sensitivity DNA Assay
 Data Path: Z:\...analyzerDPSC1_High Sensitivity DNA Assay_2020-03-13_001.xad

Created: 3/13/2020 10:42:15 AM
 Modified: 3/13/2020 11:23:37 AM

Electropherogram Summary Continued ...



Overall Results for sample 6 : sample 6

Number of peaks found: 24 Corr. Area 1: 2,320.7
 Noise: 0.2

Peak table for sample 6 : sample 6

Peak	Size [bp]	Conc. [pg/μl]	Molarity [pmol/l]	Observations
1	35	125.00	5,411.3	Lower Marker
2	184	282.39	2,328.6	
3	210	128.27	925.3	
4	217	40.24	281.1	
5	236	79.88	513.9	
6	263	112.61	649.7	
7	302	62.77	314.9	
8	315	40.94	196.9	
9	332	56.15	256.1	
10	353	40.09	171.9	
11	388	50.31	196.3	
12	430	57.82	203.6	
13	437	52.18	180.9	
14	473	37.14	118.9	
15	482	50.98	160.1	
16	530	40.05	114.5	
17	548	36.30	100.3	
18	576	53.25	140.1	
19	601	52.88	133.3	
20	631	33.69	81.0	
21	651	30.53	71.0	
22	677	227.21	508.8	
23	1,281	23.14	27.4	
24	1,892	4.96	4.0	
25	10,380	75.00	10.9	Upper Marker
26	12,516	0.00	0.0	

Assay Class: High Sensitivity DNA Assay
 Data Path: Z:\...analyzerDPSC1_High Sensitivity DNA Assay_2020-03-13_001.xad

Created: 3/13/2020 10:42:15 AM
 Modified: 3/13/2020 11:23:37 AM

Electropherogram Summary Continued ...

... Region table for sample 6 :

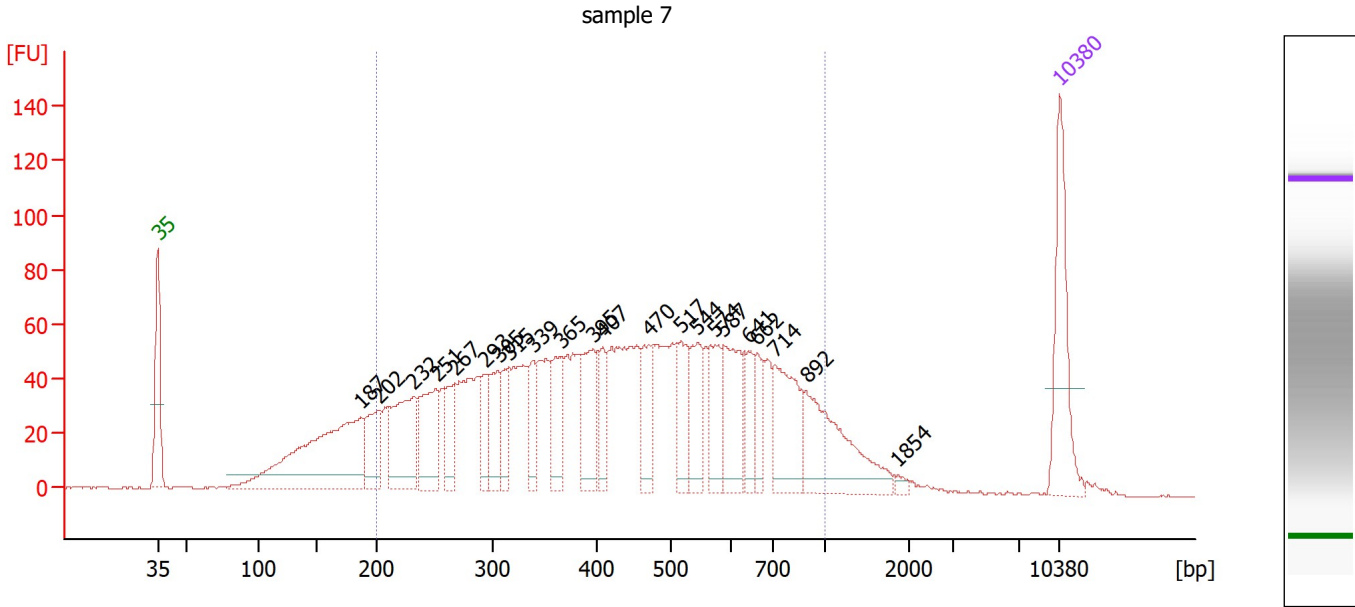
sample 6

From [bp]	To [bp]	Corr. Area	% of Total	Average Size [bp]	Size distribution in CV [%]	Conc. [pg/μl]	Molarity [pmol/l]	Color
200	1,000	2,320.7	82	455	39.4	1,973.85	8,135.7	■

Assay Class: High Sensitivity DNA Assay
 Data Path: Z:\...analyzerDPSC1_High Sensitivity DNA Assay_2020-03-13_001.xad

Created: 3/13/2020 10:42:15 AM
 Modified: 3/13/2020 11:23:37 AM

Electropherogram Summary Continued ...



Overall Results for sample 7 : sample 7

Number of peaks found: 22 Corr. Area 1: 2,080.0
 Noise: 0.2

Peak table for sample 7 : sample 7

Peak	Size [bp]	Conc. [pg/μl]	Molarity [pmol/l]	Observations
1	35	125.00	5,411.3	Lower Marker
2	187	249.72	2,021.6	
3	202	61.36	460.0	
4	232	105.05	686.3	
5	251	79.42	478.6	
6	267	42.58	241.5	
7	293	38.79	200.9	
8	305	49.36	245.2	
9	315	35.85	172.6	
10	339	35.78	160.0	
11	365	56.42	234.4	
12	395	68.36	262.0	
13	407	39.42	146.7	
14	470	46.47	149.7	
15	517	47.36	138.7	
16	544	49.95	139.0	
17	574	49.82	131.5	
18	587	73.90	190.6	
19	641	33.55	79.3	
20	662	28.58	65.4	
21	714	85.24	180.8	
22	892	108.68	184.7	
23	1,854	4.02	3.3	
24	10,380	75.00	10.9	Upper Marker

Assay Class: High Sensitivity DNA Assay
 Data Path: Z:\...analyzerDPSC1_High Sensitivity DNA Assay_2020-03-13_001.xad

Created: 3/13/2020 10:42:15 AM
 Modified: 3/13/2020 11:23:37 AM

Electropherogram Summary Continued ...

... Region table for sample 7 :

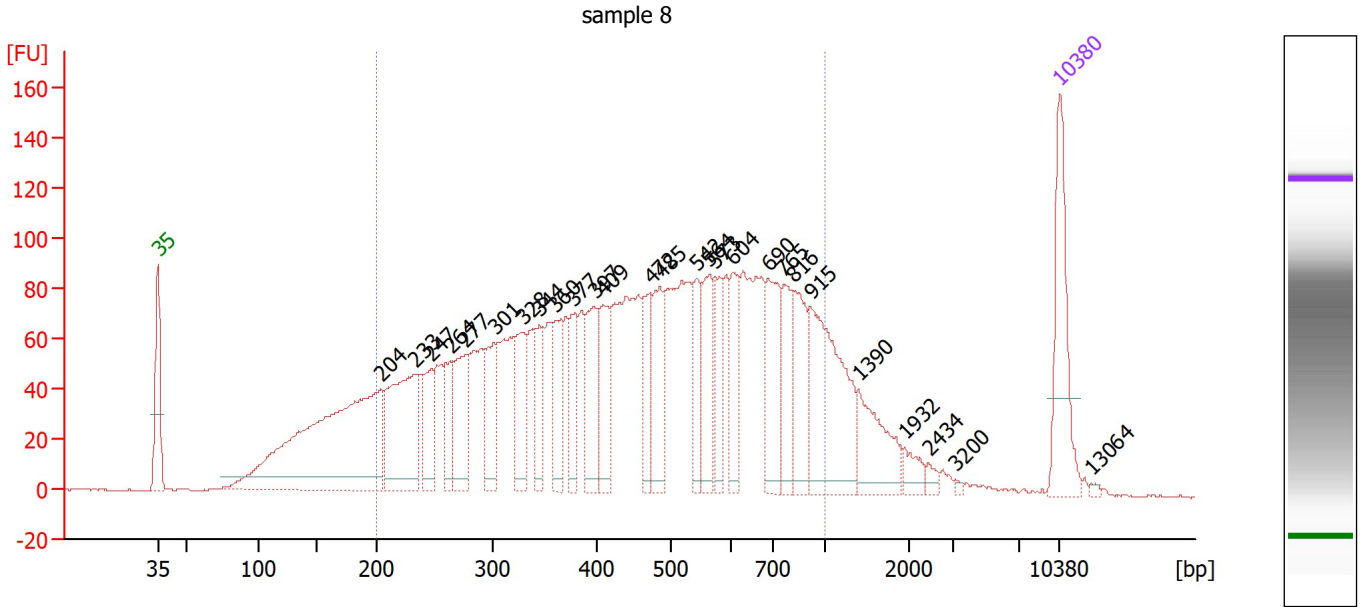
sample 7

From [bp]	To [bp]	Corr. Area	% of Total	Average Size [bp]	Size distribution in CV [%]	Conc. [pg/μl]	Molarity [pmol/l]	Color
200	1,000	2,080.0	83	460	39.1	1,728.22	7,047.3	■

Assay Class: High Sensitivity DNA Assay
 Data Path: Z:\...analyzerDPSC1_High Sensitivity DNA Assay_2020-03-13_001.xad

Created: 3/13/2020 10:42:15 AM
 Modified: 3/13/2020 11:23:37 AM

Electropherogram Summary Continued ...



Overall Results for sample 8 : sample 8

Number of peaks found: 27 Corr. Area 1: 3,098.7
 Noise: 0.3

Peak table for sample 8 : sample 8

Peak	Size [bp]	Conc. [pg/μl]	Molarity [pmol/l]	Observations
1	35	125.00	5,411.3	Lower Marker
2	204	400.46	2,970.1	
3	233	158.55	1,031.7	
4	247	53.56	329.1	
5	264	42.36	243.5	
6	277	79.05	432.7	
7	301	60.70	305.5	
8	328	65.20	301.2	
9	344	44.78	197.0	
10	360	55.27	232.4	
11	377	44.80	180.1	
12	397	71.36	272.4	
13	409	61.35	227.4	
14	472	48.34	155.1	
15	485	69.92	218.4	
16	542	44.30	123.8	
17	564	63.51	170.7	
18	573	43.01	113.7	
19	604	48.52	121.7	
20	690	75.62	166.0	
21	765	50.44	100.0	
22	816	68.24	126.7	
23	915	149.13	246.9	
24	1,390	58.81	64.1	
25	1,932	14.73	11.5	
26	2,434	5.64	3.5	

Assay Class: High Sensitivity DNA Assay
 Data Path: Z:\...analyzerDPSC1_High Sensitivity DNA Assay_2020-03-13_001.xad

Created: 3/13/2020 10:42:15 AM
 Modified: 3/13/2020 11:23:37 AM

Electropherogram Summary Continued ...

... Peak table for sample 8 : sample 8

Peak	Size [bp]	Conc. [pg/μl]	Molarity [pmol/l]	Observations
27	3,200	1.82	0.9	
28	10,380	75.00	10.9	Upper Marker
29	13,064	0.00	0.0	

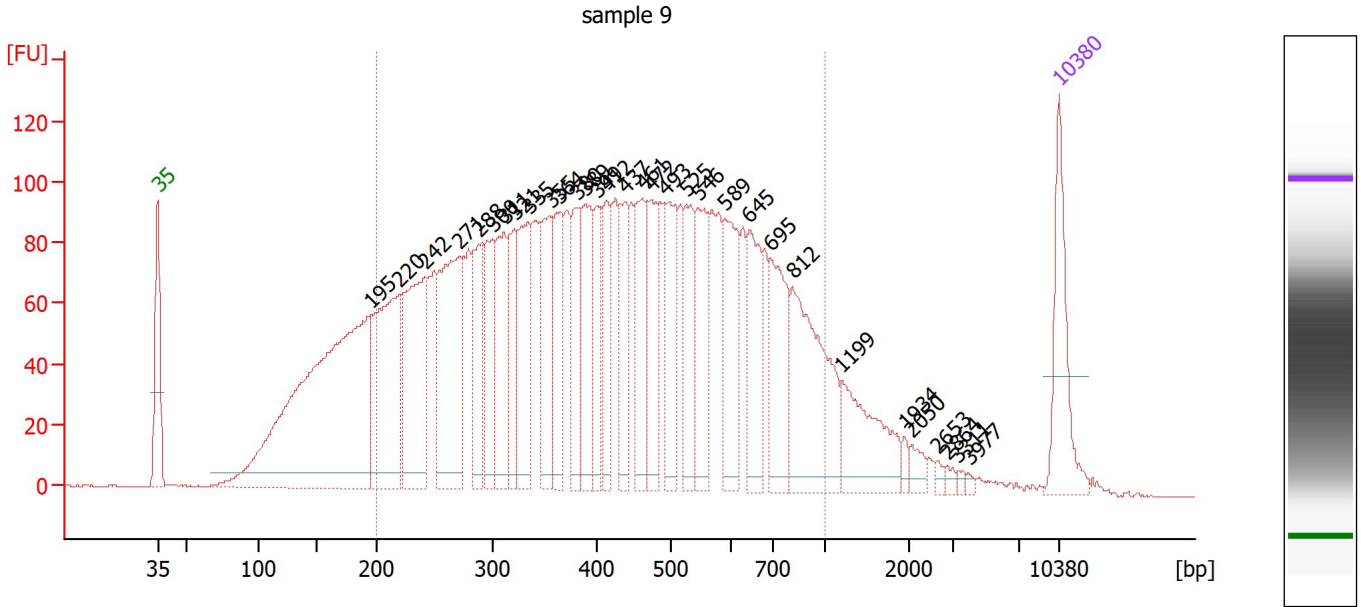
Region table for sample 8 : sample 8

From [bp]	To [bp]	Corr. Area	% of Total	Average Size [bp]	Size distribution in CV [%]	Conc. [pg/μl]	Molarity [pmol/l]	Color
200	1,000	3,098.7	80	482	39.5	2,298.95	9,064.4	Blue

Assay Class: High Sensitivity DNA Assay
 Data Path: Z:\...analyzerDPSC1_High Sensitivity DNA Assay_2020-03-13_001.xad

Created: 3/13/2020 10:42:15 AM
 Modified: 3/13/2020 11:23:37 AM

Electropherogram Summary Continued ...



Overall Results for sample 9 : sample 9

Number of peaks found: 32 Corr. Area 1: 3,721.3
 Noise: 0.3

Peak table for sample 9 : sample 9

Peak	Size [bp]	Conc. [pg/μl]	Molarity [pmol/l]	Observations
1	35	125.00	5,411.3	Lower Marker
2	195	631.56	4,901.7	
3	220	243.20	1,674.6	
4	242	211.05	1,320.5	
5	271	229.05	1,281.0	
6	288	92.16	484.7	
7	300	97.46	492.7	
8	311	108.26	527.9	
9	321	84.82	400.1	
10	335	123.47	558.9	
11	355	104.87	447.5	
12	364	87.87	366.1	
13	380	80.77	321.8	
14	389	90.69	353.3	
15	399	67.78	257.1	
16	412	73.03	268.5	
17	437	71.76	249.0	
18	461	96.32	316.5	
19	472	100.48	322.8	
20	493	98.03	301.5	
21	525	79.16	228.4	
22	546	93.76	260.4	
23	589	99.56	255.9	
24	645	89.13	209.4	
25	695	100.85	220.0	
26	812	176.24	328.7	

Assay Class: High Sensitivity DNA Assay
 Data Path: Z:\...analyzerDPSC1_High Sensitivity DNA Assay_2020-03-13_001.xad

Created: 3/13/2020 10:42:15 AM
 Modified: 3/13/2020 11:23:37 AM

Electropherogram Summary Continued ...

... Peak table for sample 9 : sample 9

Peak	Size [bp]	Conc. [pg/μl]	Molarity [pmol/l]	Observations
27	1,199	88.09	111.3	
28	1,934	7.07	5.5	
29	2,050	11.86	8.8	
30	2,653	4.33	2.5	
31	2,864	4.77	2.5	
32	3,311	3.16	1.4	
33	3,977	2.48	0.9	
34	10,380	75.00	10.9	Upper Marker

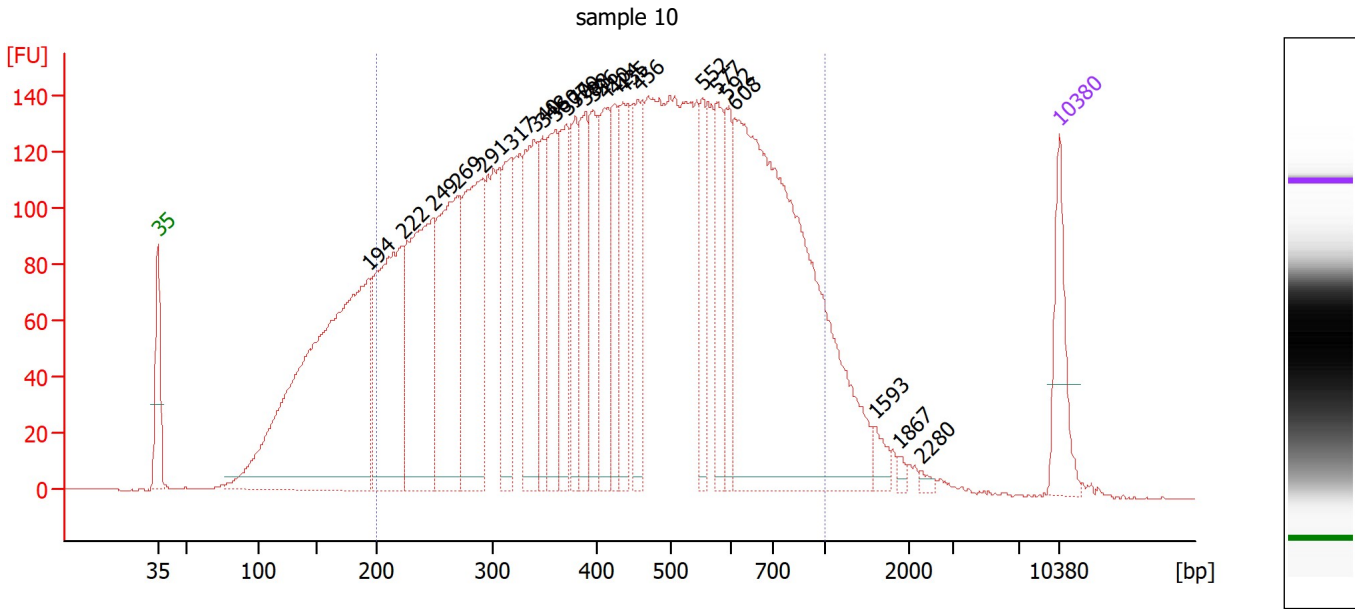
Region table for sample 9 : sample 9

From [bp]	To [bp]	Corr. Area	% of Total	Average Size [bp]	Size distribution in CV [%]	Conc. [pg/μl]	Molarity [pmol/l]	Color
200	1,000	3,721.3	80	448	39.3	3,367.84	14,045.9	■

Assay Class: High Sensitivity DNA Assay
 Data Path: Z:\...analyzerDPSC1_High Sensitivity DNA Assay_2020-03-13_001.xad

Created: 3/13/2020 10:42:15 AM
 Modified: 3/13/2020 11:23:37 AM

Electropherogram Summary Continued ...



Overall Results for sample 10 : sample 10

Number of peaks found: 24 Corr. Area 1: 5,334.7
 Noise: 0.2

Peak table for sample 10 : sample 10

Peak	Size [bp]	Conc. [pg/μl]	Molarity [pmol/l]	Observations
1	35	125.00	5,411.3	Lower Marker
2	194	907.78	7,081.6	
3	222	375.41	2,557.0	
4	249	396.65	2,418.1	
5	269	328.93	1,852.2	
6	291	308.22	1,603.3	
7	317	156.87	750.1	
8	340	215.35	958.7	
9	348	112.48	490.1	
10	360	162.59	684.1	
11	370	144.44	591.5	
12	379	110.11	439.9	
13	388	134.54	525.5	
14	396	116.80	447.0	
15	410	157.20	580.9	
16	424	107.73	384.9	
17	435	140.17	488.7	
18	456	114.33	379.5	
19	552	95.19	261.3	
20	577	111.56	293.1	
21	592	87.35	223.7	
22	608	893.61	2,226.2	
23	1,593	20.11	19.1	
24	1,867	5.36	4.3	
25	2,280	5.22	3.5	
26	10,380	75.00	10.9	Upper Marker

Assay Class: High Sensitivity DNA Assay
 Data Path: Z:\...analyzerDPSC1_High Sensitivity DNA Assay_2020-03-13_001.xad

Created: 3/13/2020 10:42:15 AM
 Modified: 3/13/2020 11:23:37 AM

Electropherogram Summary Continued ...

... Region table for sample 10 :

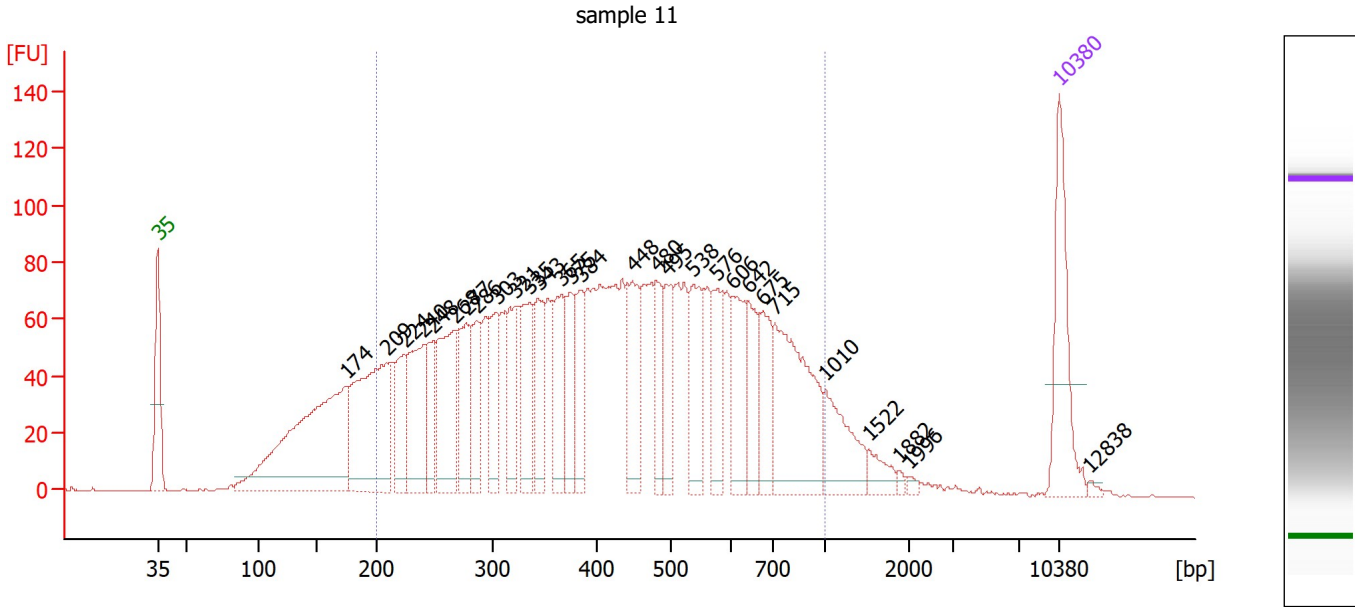
sample 10

From [bp]	To [bp]	Corr. Area	% of Total	Average Size [bp]	Size distribution in CV [%]	Conc. [pg/μl]	Molarity [pmol/l]	Color
200	1,000	5,334.7	83	455	38.9	5,309.80	21,824.9	■

Assay Class: High Sensitivity DNA Assay
 Data Path: Z:\...analyzerDPSC1_High Sensitivity DNA Assay_2020-03-13_001.xad

Created: 3/13/2020 10:42:15 AM
 Modified: 3/13/2020 11:23:37 AM

Electropherogram Summary Continued ...



Overall Results for sample 11 : sample 11

Number of peaks found: 29 Corr. Area 1: 2,831.8
 Noise: 0.2

Peak table for sample 11 : sample 11

Peak	Size [bp]	Conc. [pg/μl]	Molarity [pmol/l]	Observations
1	35	125.00	5,411.3	Lower Marker
2	174	311.63	2,711.7	
3	209	209.79	1,521.9	
4	224	64.81	438.5	
5	240	110.11	694.9	
6	248	49.19	300.0	
7	268	120.50	681.4	
8	277	70.22	384.3	
9	286	58.46	309.3	
10	303	58.93	294.3	
11	321	70.12	331.2	
12	335	77.30	349.5	
13	343	61.78	272.8	
14	365	71.08	294.7	
15	375	52.01	210.3	
16	384	51.55	203.4	
17	448	74.90	253.4	
18	480	52.52	165.6	
19	495	44.62	136.7	
20	538	73.53	207.3	
21	576	50.66	133.2	
22	606	60.84	152.0	
23	642	50.44	119.0	
24	675	50.60	113.6	
25	715	152.78	323.9	
26	1,010	58.05	87.0	

Assay Class: High Sensitivity DNA Assay
 Data Path: Z:\...analyzerDPSC1_High Sensitivity DNA Assay_2020-03-13_001.xad

Created: 3/13/2020 10:42:15 AM
 Modified: 3/13/2020 11:23:37 AM

Electropherogram Summary Continued ...

... Peak table for sample 11 : sample 11

Peak	Size [bp]	Conc. [pg/μl]	Molarity [pmol/l]	Observations
27	1,522	16.88	16.8	
28	1,882	2.92	2.4	
29	1,996	3.45	2.6	
30	10,380	75.00	10.9	Upper Marker
31	12,838	0.00	0.0	

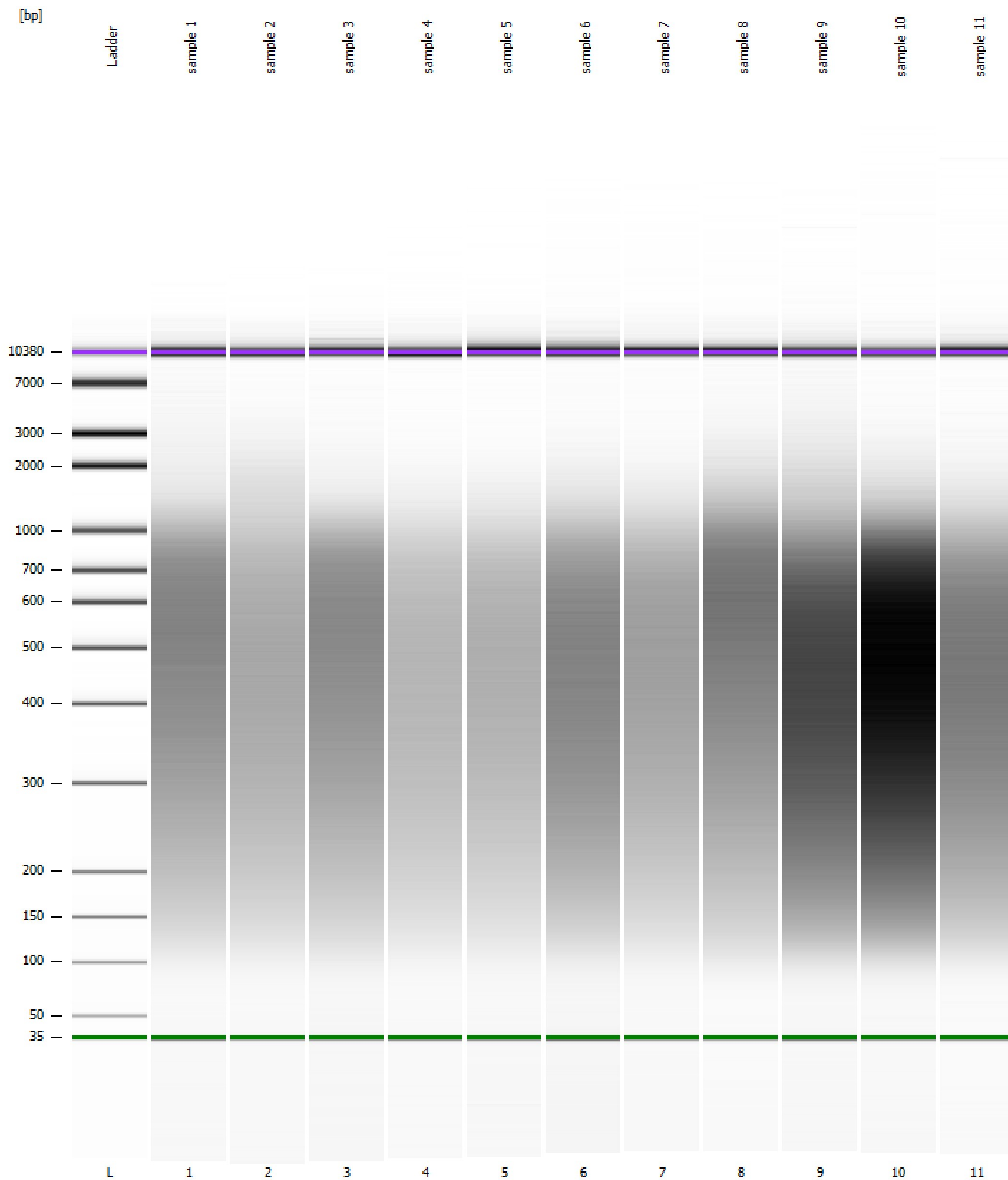
Region table for sample 11 : sample 11

From [bp]	To [bp]	Corr. Area	% of Total	Average Size [bp]	Size distribution in CV [%]	Conc. [pg/μl]	Molarity [pmol/l]	Color
200	1,000	2,831.8	82	451	39.1	2,298.20	9,518.0	

Assay Class: High Sensitivity DNA Assay
Data Path: Z:\...analyzerDPSC1_High Sensitivity DNA Assay_2020-03-13_001.xad

Created: 3/13/2020 10:42:15 AM
Modified: 3/13/2020 11:23:37 AM

Gel Image



Assay Class: High Sensitivity DNA Assay
 Data Path: Z:\...analyzerDPSC1_High Sensitivity DNA Assay_2020-03-13_001.xad

Created: 3/13/2020 10:42:15 AM
 Modified: 3/13/2020 11:23:37 AM

Run Logbook

Description	Number	Source	Category	Sub Category	Time	Time Zone	User	Host
Run ended on port 1 (Number of wells acquired: 12)		Instrument	Run		3/13/2020 1:23:34 PM	(GMT --07:00) Pacific Standard Time	sbsuser	DESKTOP-4UNV VOB
Run started on port 1 (File: Z:\XADs\2020-03-13\Bioanalyze rDPSC1_High Sensitivity DNA Assay_2020-03-13_001.xad)		Instrument	Run		3/13/2020 12:42:21 PM	(GMT --07:00) Pacific Standard Time	sbsuser	DESKTOP-4UNV VOB
Product Number : G2938C		Instrument	Run		3/13/2020 12:42:21 PM	(GMT --07:00) Pacific Standard Time	sbsuser	DESKTOP-4UNV VOB
Name :		Instrument	Run		3/13/2020 12:42:21 PM	(GMT --07:00) Pacific Standard Time	sbsuser	DESKTOP-4UNV VOB
Vendor : Agilent Technologies		Instrument	Run		3/13/2020 12:42:21 PM	(GMT --07:00) Pacific Standard Time	sbsuser	DESKTOP-4UNV VOB
Serial# : DE34903152		Instrument	Run		3/13/2020 12:42:21 PM	(GMT --07:00) Pacific Standard Time	sbsuser	DESKTOP-4UNV VOB
Firmware : C.01.069		Instrument	Run		3/13/2020 12:42:21 PM	(GMT --07:00) Pacific Standard Time	sbsuser	DESKTOP-4UNV VOB
Cartridge : Electrode		Instrument	Run		3/13/2020 12:42:21 PM	(GMT --07:00) Pacific Standard Time	sbsuser	DESKTOP-4UNV VOB