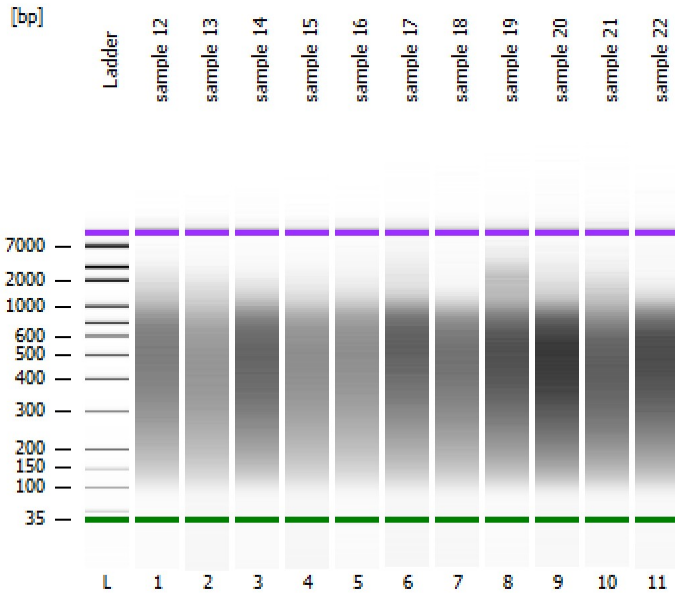


Assay Class: High Sensitivity DNA Assay
Data Path: Z:\...analyzerDPSC2_High Sensitivity DNA Assay_2020-03-13_001.xad

Created: 3/13/2020 11:57:00 AM
Modified: 3/13/2020 1:26:11 PM

Electrophoresis File Run Summary



Instrument Information:

Instrument Name: DE34903152 Firmware: C.01.069
Serial#: DE34903152 Type: G2938C

Assay Information:

Assay Origin Path: C:\Program Files (x86)\Agilent\2100 bioanalyzer\2100 expert\assays\dsDNA\High Sensitivity DNA.xsy
Assay Class: High Sensitivity DNA Assay
Version: 1.03
Assay Comments: Copyright © 2003-2010 Agilent Technologies

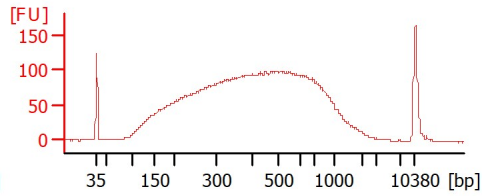
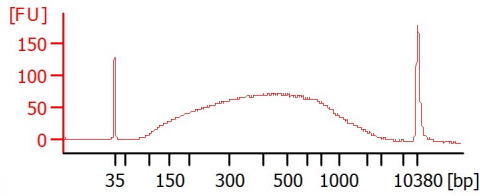
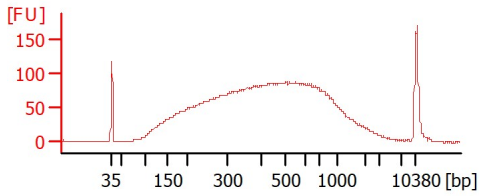
Chip Information:

Chip Lot #: Reagent Kit Lot #: Chip Comments:

sample 12

sample 13

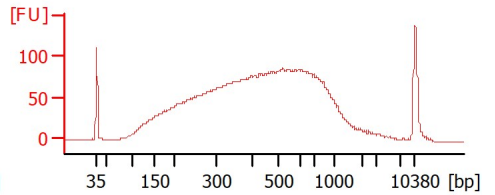
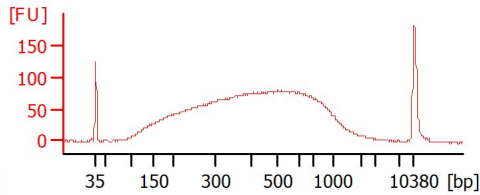
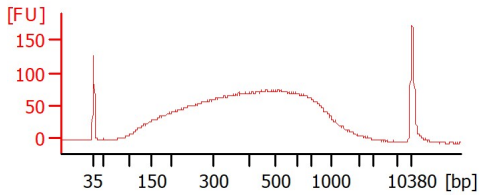
sample 14



sample 15

sample 16

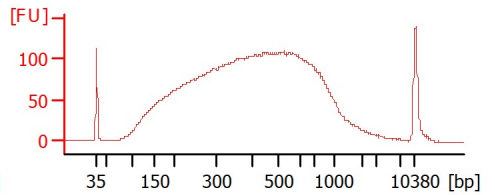
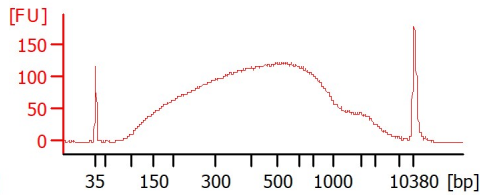
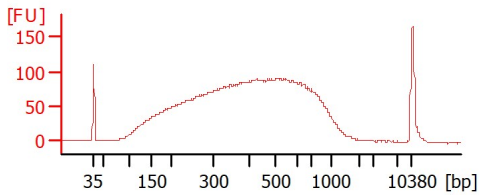
sample 17



sample 18

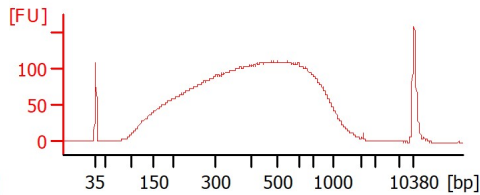
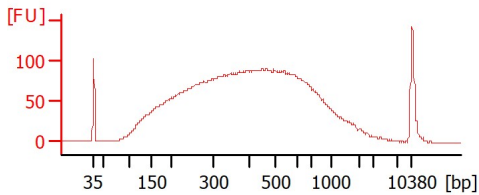
sample 19

sample 20



sample 21

sample 22



Assay Class: High Sensitivity DNA Assay
 Data Path: Z:\...analyzerDPSC2_High Sensitivity DNA Assay_2020-03-13_001.xad

Created: 3/13/2020 11:57:00 AM
 Modified: 3/13/2020 1:26:11 PM

Electrophoresis File Run Summary (Chip Summary)

Sample Name	Sample Comment	Rest. Digest	Status	Observation	Result Label	Result Color
sample 12		<input type="checkbox"/>	✓			
sample 13		<input type="checkbox"/>	✓			
sample 14		<input type="checkbox"/>	✓			
sample 15		<input type="checkbox"/>	✓			
sample 16		<input type="checkbox"/>	✓			
sample 17		<input type="checkbox"/>	✓			
sample 18		<input type="checkbox"/>	✓			
sample 19		<input type="checkbox"/>	✓			
sample 20		<input type="checkbox"/>	✓			
sample 21		<input type="checkbox"/>	✓			
sample 22		<input type="checkbox"/>	✓			
Ladder		<input type="checkbox"/>	✓			

Chip Lot #

Reagent Kit Lot #

Chip Comments :

Assay Class: High Sensitivity DNA Assay
 Data Path: Z:\...analyzerDPSC2_High Sensitivity DNA Assay_2020-03-13_001.xad

Created: 3/13/2020 11:57:00 AM
 Modified: 3/13/2020 1:26:11 PM

Electrophoresis Assay Details

General Analysis Settings

Number of Available Sample and Ladder Wells (Max.) : 12
 Minimum Visible Range [s] : 32
 Maximum Visible Range [s] : 138
 Start Analysis Time Range [s] : 33
 End Analysis Time Range [s] : 137.5
 Ladder Concentration [pg/μl] : 1950
 Uses Standard Area for Ladder Fragments
 Lower Marker Concentration [pg/μl] : 125
 Upper Marker Concentration [pg/μl] : 75
 Used Upper Marker for Quantitation
 Standard Curve Fit is Point to Point
 Show Data Aligned to Lower and Upper Marker

Integrator Settings

Integration Start Time [s] : 33.05
 Integration End Time [s] : 137
 Slope Threshold : 0.8
 Height Threshold [FU] : 5
 Area Threshold : 0.1
 Width Threshold [s] : 0.6
 Baseline Plateau [s] : 0.5

Filter Settings

Filter Width [s] : 0.5
 Polynomial Order : 4

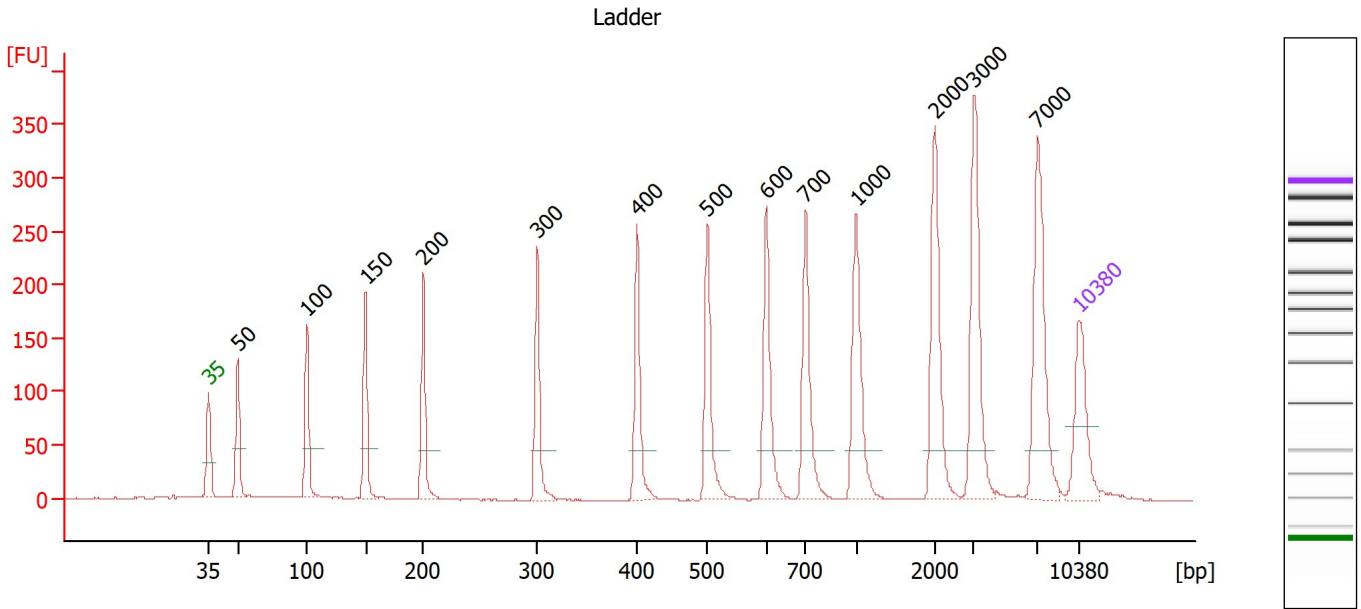
Ladder

Ladder Peak	Size	Area
1	35	160
2	50	210
3	100	208
4	150	221
5	200	242
6	300	270
7	400	305
8	500	306
9	600	336
10	700	321
11	1000	366
12	2000	413
13	3000	411
14	7000	400
15	10380	214

Assay Class: High Sensitivity DNA Assay
 Data Path: Z:\...analyzerDPSC2_High Sensitivity DNA Assay_2020-03-13_001.xad

Created: 3/13/2020 11:57:00 AM
 Modified: 3/13/2020 1:26:11 PM

Electropherogram Summary



Overall Results for Ladder

Noise: 0.4

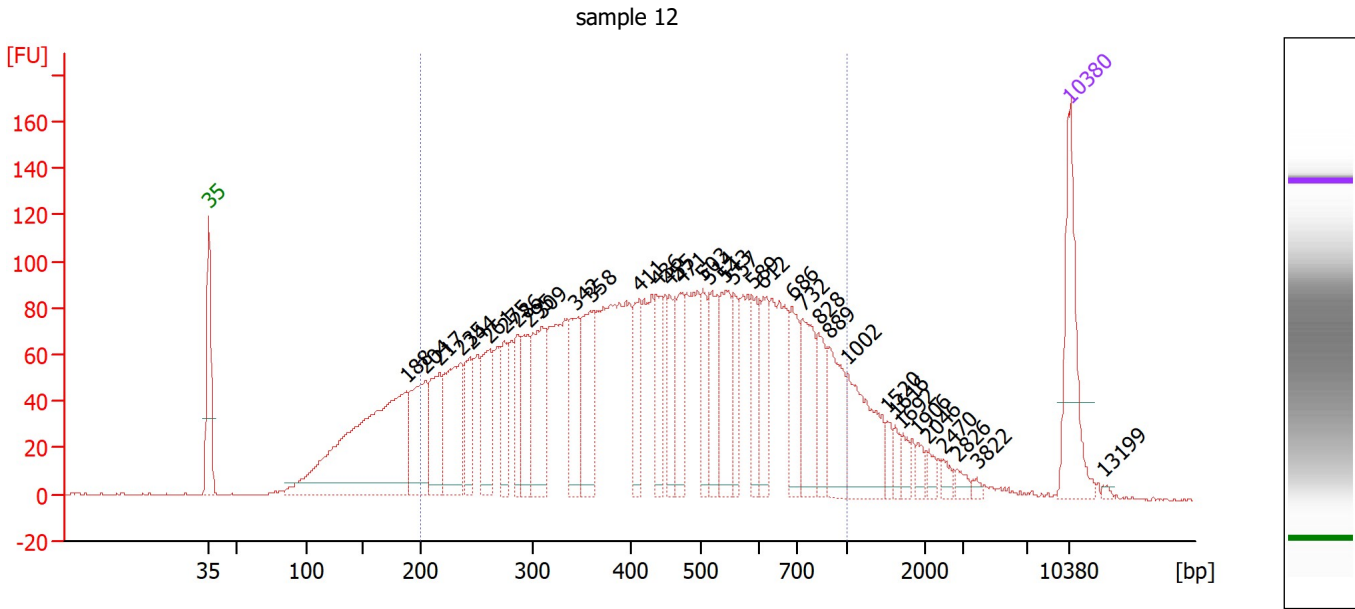
Peak table for Ladder

Peak	Size [bp]	Conc. [pg/μl]	Molarity [pmol/l]	Observations
1	35	125.00	5,411.3	Lower Marker
2	50	150.00	4,545.5	Ladder Peak
3	100	150.00	2,272.7	Ladder Peak
4	150	150.00	1,515.2	Ladder Peak
5	200	150.00	1,136.4	Ladder Peak
6	300	150.00	757.6	Ladder Peak
7	400	150.00	568.2	Ladder Peak
8	500	150.00	454.5	Ladder Peak
9	600	150.00	378.8	Ladder Peak
10	700	150.00	324.7	Ladder Peak
11	1,000	150.00	227.3	Ladder Peak
12	2,000	150.00	113.6	Ladder Peak
13	3,000	150.00	75.8	Ladder Peak
14	7,000	150.00	32.5	Ladder Peak
15	10,380	75.00	10.9	Upper Marker

Assay Class: High Sensitivity DNA Assay
 Data Path: Z:\...analyzerDPSC2_High Sensitivity DNA Assay_2020-03-13_001.xad

Created: 3/13/2020 11:57:00 AM
 Modified: 3/13/2020 1:26:11 PM

Electropherogram Summary Continued ...



Overall Results for sample 1 : sample 12

Number of peaks found: 36 Corr. Area 1: 3,505.7
 Noise: 0.4

Peak table for sample 1 : sample 12

Peak	Size [bp]	Conc. [pg/μl]	Molarity [pmol/l]	Observations
1	35	125.00	5,411.3	Lower Marker
2	188	365.17	2,950.5	
3	204	103.83	769.4	
4	217	78.50	548.7	
5	235	116.93	753.1	
6	244	54.44	337.7	
7	261	68.32	396.2	
8	275	50.08	276.4	
9	286	47.58	252.2	
10	295	56.86	291.6	
11	309	99.92	490.2	
12	342	79.44	352.1	
13	358	78.49	332.1	
14	411	50.16	184.7	
15	436	47.61	165.5	
16	455	40.49	134.8	
17	471	52.76	169.6	
18	503	42.58	128.2	
19	514	59.74	176.0	
20	543	71.79	200.3	
21	557	38.84	105.7	
22	589	39.11	100.6	
23	612	48.78	120.7	
24	686	47.81	105.5	
25	732	66.11	136.8	
26	828	36.54	66.8	

Assay Class: High Sensitivity DNA Assay
 Data Path: Z:\...analyzerDPSC2_High Sensitivity DNA Assay_2020-03-13_001.xad

Created: 3/13/2020 11:57:00 AM
 Modified: 3/13/2020 1:26:11 PM

Electropherogram Summary Continued ...

... Peak table for sample 1 : sample 12

Peak	Size [bp]	Conc. [pg/µl]	Molarity [pmol/l]	Observations
27	889	57.85	98.6	
28	1,002	79.43	120.1	
29	1,520	10.34	10.3	
30	1,616	8.59	8.1	
31	1,692	10.42	9.3	
32	1,906	8.16	6.5	
33	2,046	8.57	6.3	
34	2,470	6.98	4.3	
35	2,826	6.60	3.5	
36	3,822	3.39	1.3	
37	10,380	75.00	10.9	Upper Marker
38	13,199	0.00	0.0	

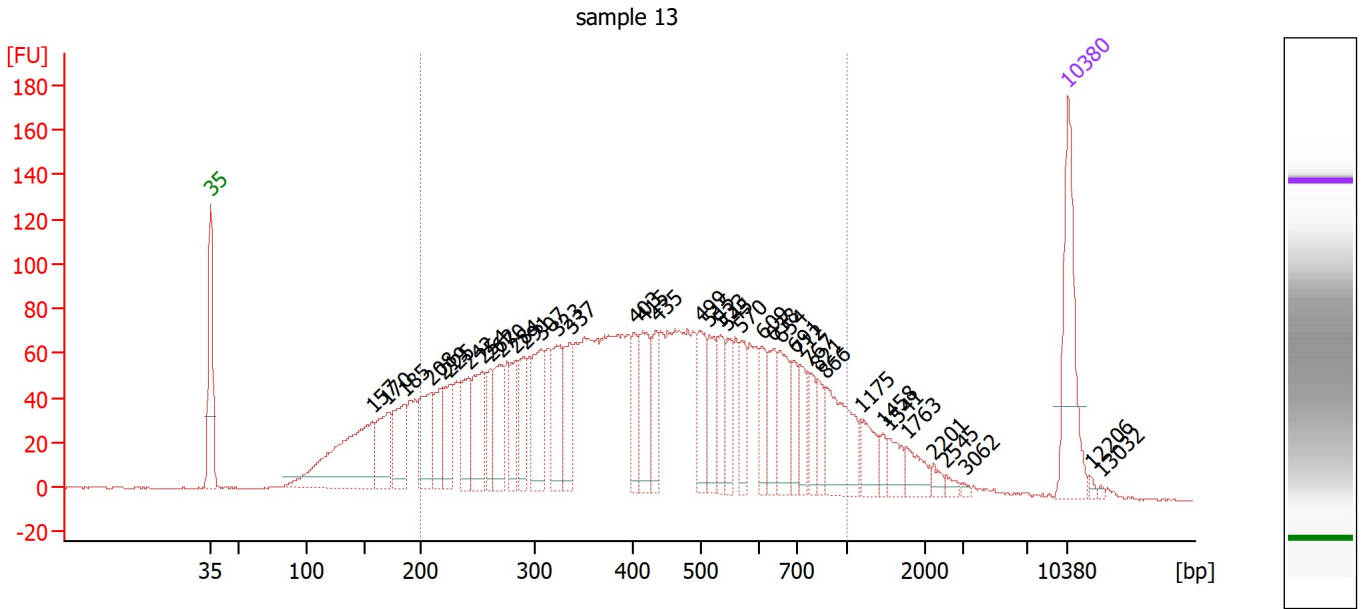
Region table for sample 1 : sample 12

From [bp]	To [bp]	Corr. Area	% of Total	Average Size [bp]	Size distribution in CV [%]	Conc. [pg/µl]	Molarity [pmol/l]	Color
200	1,000	3,505.7	80	461	39.6	2,355.26	9,636.7	

Assay Class: High Sensitivity DNA Assay
 Data Path: Z:\...analyzerDPSC2_High Sensitivity DNA Assay_2020-03-13_001.xad

Created: 3/13/2020 11:57:00 AM
 Modified: 3/13/2020 1:26:11 PM

Electropherogram Summary Continued ...



Overall Results for sample 2 : sample 13

Number of peaks found: 40 Corr. Area 1: 2,922.2
 Noise: 0.4

Peak table for sample 2 : sample 13

Peak	Size [bp]	Conc. [pg/μl]	Molarity [pmol/l]	Observations
1	35	125.00	5,411.3	Lower Marker
2	157	178.51	1,723.7	
3	170	66.19	589.6	
4	185	58.98	484.0	
5	208	71.18	517.8	
6	219	45.30	313.8	
7	225	44.03	296.7	
8	242	47.64	297.7	
9	254	72.35	431.0	
10	262	38.27	221.4	
11	270	52.65	295.5	
12	284	36.11	192.8	
13	291	41.97	218.3	
14	307	67.57	333.0	
15	323	59.23	277.6	
16	337	49.88	224.0	
17	403	33.49	125.9	
18	415	59.03	215.4	
19	435	38.05	132.5	
20	499	43.63	132.5	
21	515	39.28	115.6	
22	533	35.99	102.3	
23	545	32.59	90.6	
24	570	30.85	82.0	
25	609	26.65	66.3	
26	638	37.71	89.6	

Assay Class: High Sensitivity DNA Assay
 Data Path: Z:\...analyzerDPSC2_High Sensitivity DNA Assay_2020-03-13_001.xad

Created: 3/13/2020 11:57:00 AM
 Modified: 3/13/2020 1:26:11 PM

Electropherogram Summary Continued ...

... Peak table for sample 2 : sample 13

Peak	Size [bp]	Conc. [pg/μl]	Molarity [pmol/l]	Observations
27	654	43.69	101.2	
28	691	24.31	53.3	
29	712	24.95	53.1	
30	767	24.08	47.6	
31	821	19.21	35.4	
32	866	71.64	125.3	
33	1,175	26.15	33.7	
34	1,458	8.52	8.8	
35	1,541	16.96	16.7	
36	1,763	18.56	16.0	
37	2,201	5.94	4.1	
38	2,545	4.47	2.7	
39	3,062	1.99	1.0	
40	10,380	75.00	10.9	Upper Marker
41	12,206	0.00	0.0	
42	13,032	0.00	0.0	

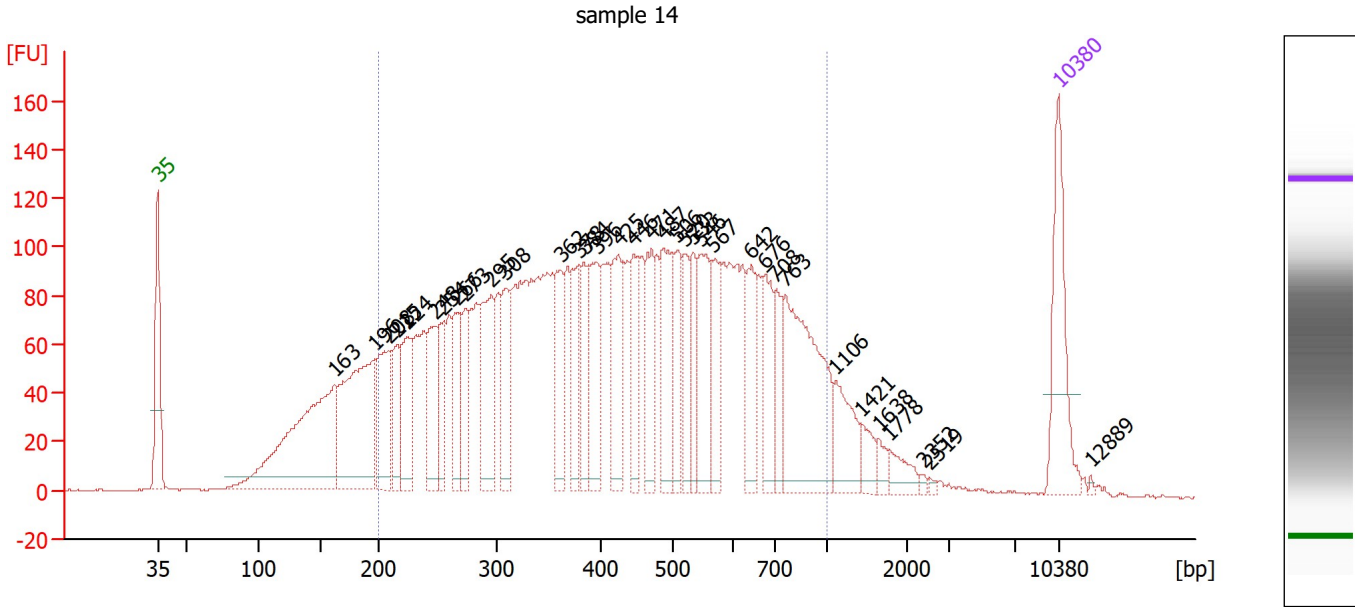
Region table for sample 2 : sample 13

From [bp]	To [bp]	Corr. Area	% of Total	Average Size [bp]	Size distribution in CV [%]	Conc. [pg/μl]	Molarity [pmol/l]	Color
200	1,000	2,922.2	80	451	39.5	1,905.31	7,925.2	

Assay Class: High Sensitivity DNA Assay
 Data Path: Z:\...analyzerDPSC2_High Sensitivity DNA Assay_2020-03-13_001.xad

Created: 3/13/2020 11:57:00 AM
 Modified: 3/13/2020 1:26:11 PM

Electropherogram Summary Continued ...



Overall Results for sample 3 : sample 14

Number of peaks found: 35 Corr. Area 1: 3,963.6
 Noise: 0.4

Peak table for sample 3 : sample 14

Peak	Size [bp]	Conc. [pg/μl]	Molarity [pmol/l]	Observations
1	35	125.00	5,411.3	Lower Marker
2	163	284.60	2,653.4	
3	196	210.83	1,630.9	
4	208	95.33	694.9	
5	215	50.76	357.6	
6	224	74.31	503.3	
7	248	71.91	439.8	
8	254	49.58	295.2	
9	266	66.68	379.8	
10	273	50.95	282.5	
11	295	102.33	525.0	
12	308	60.26	296.5	
13	362	57.94	242.6	
14	378	49.32	197.5	
15	384	53.11	209.4	
16	396	78.00	298.5	
17	425	69.89	248.9	
18	446	58.52	199.0	
19	471	65.18	209.8	
20	487	76.20	237.1	
21	506	60.30	180.6	
22	520	48.03	140.0	
23	533	43.61	124.0	
24	546	75.63	209.8	
25	567	56.21	150.3	
26	642	57.29	135.1	

Assay Class: High Sensitivity DNA Assay
 Data Path: Z:\...analyzerDPSC2_High Sensitivity DNA Assay_2020-03-13_001.xad

Created: 3/13/2020 11:57:00 AM
 Modified: 3/13/2020 1:26:11 PM

Electropherogram Summary Continued ...

... Peak table for sample 3 : sample 14

Peak	Size [bp]	Conc. [pg/µl]	Molarity [pmol/l]	Observations
27	676	54.82	122.9	
28	708	41.30	88.4	
29	763	171.90	341.2	
30	1,106	47.30	64.8	
31	1,421	18.14	19.3	
32	1,638	9.46	8.8	
33	1,778	16.08	13.7	
34	2,352	2.30	1.5	
35	2,519	2.18	1.3	
36	10,380	75.00	10.9	Upper Marker
37	12,889	0.00	0.0	

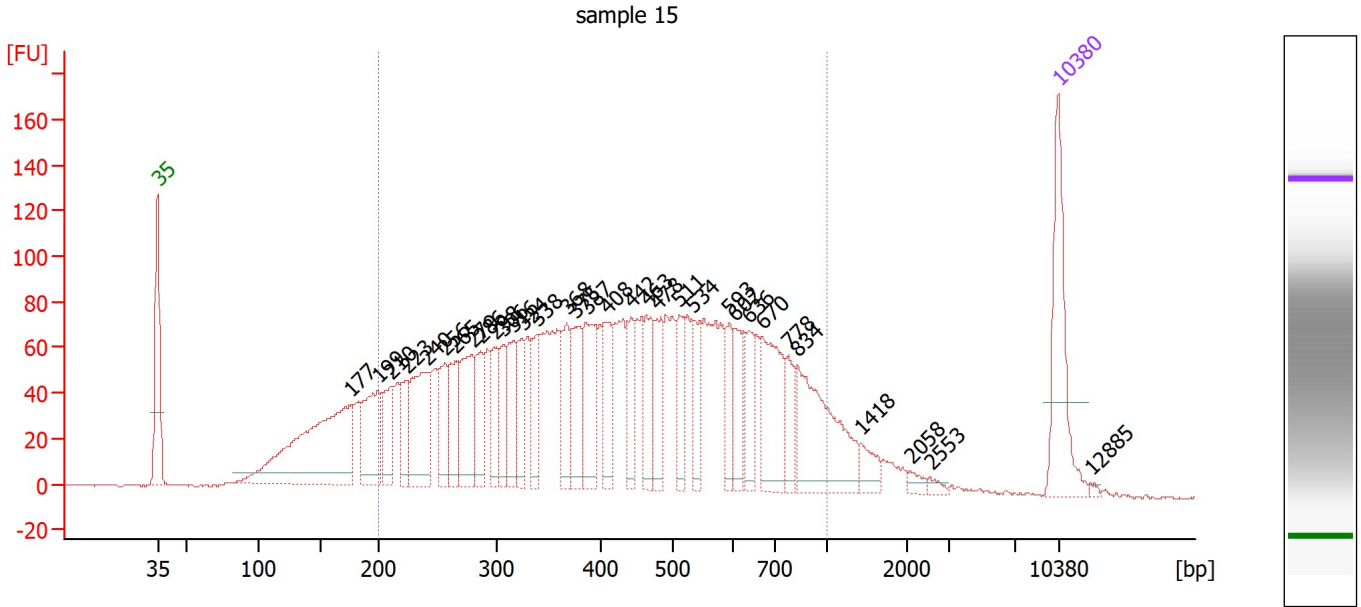
Region table for sample 3 : sample 14

From [bp]	To [bp]	Corr. Area	% of Total	Average Size [bp]	Size distribution in CV [%]	Conc. [pg/µl]	Molarity [pmol/l]	Color
200	1,000	3,963.6	81	456	39.5	2,741.20	11,305.0	■

Assay Class: High Sensitivity DNA Assay
 Data Path: Z:\...analyzerDPSC2_High Sensitivity DNA Assay_2020-03-13_001.xad

Created: 3/13/2020 11:57:00 AM
 Modified: 3/13/2020 1:26:11 PM

Electropherogram Summary Continued ...



Overall Results for sample 4 : sample 15

Number of peaks found: 33 Corr. Area 1: 3,011.8
 Noise: 0.4

Peak table for sample 4 : sample 15

Peak	Size [bp]	Conc. [pg/μl]	Molarity [pmol/l]	Observations
1	35	125.00	5,411.3	Lower Marker
2	177	251.04	2,154.9	
3	199	86.08	656.1	
4	210	48.88	353.5	
5	223	37.60	255.3	
6	240	101.48	639.9	
7	256	48.47	286.9	
8	265	48.70	278.7	
9	279	80.64	438.1	
10	286	43.90	232.4	
11	298	38.51	195.9	
12	306	41.32	204.6	
13	316	50.42	242.1	
14	324	41.43	193.8	
15	338	43.89	196.5	
16	368	43.44	179.1	
17	375	57.12	230.6	
18	387	73.61	288.1	
19	408	47.11	175.0	
20	442	35.75	122.6	
21	463	49.15	160.7	
22	478	43.02	136.5	
23	511	39.58	117.3	
24	534	37.45	106.3	
25	593	28.97	74.0	
26	602	34.46	86.7	

Assay Class: High Sensitivity DNA Assay
 Data Path: Z:\...analyzerDPSC2_High Sensitivity DNA Assay_2020-03-13_001.xad

Created: 3/13/2020 11:57:00 AM
 Modified: 3/13/2020 1:26:11 PM

Electropherogram Summary Continued ...

... Peak table for sample 4 : sample 15

Peak	Size [bp]	Conc. [pg/μl]	Molarity [pmol/l]	Observations
27	636	31.94	76.1	
28	670	84.02	190.1	
29	778	28.73	56.0	
30	834	115.14	209.1	
31	1,418	16.43	17.6	
32	2,058	5.98	4.4	
33	2,553	4.15	2.5	
34	10,380	75.00	10.9	Upper Marker
35	12,885	0.00	0.0	

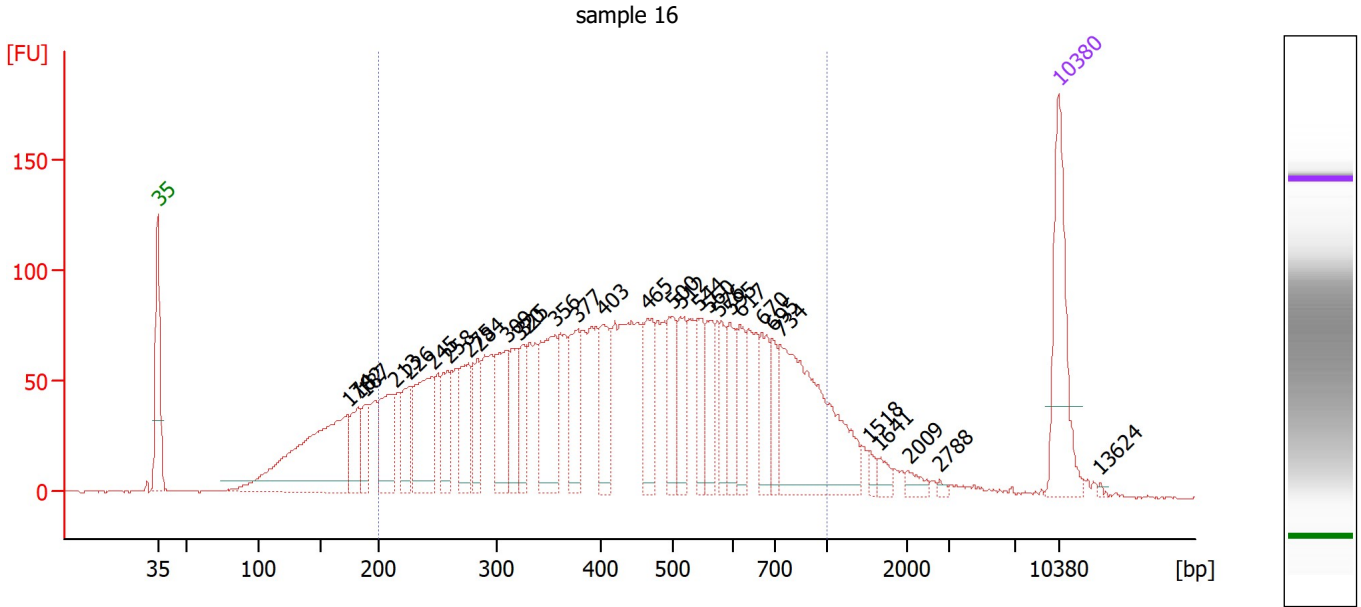
Region table for sample 4 : sample 15

From [bp]	To [bp]	Corr. Area	% of Total	Average Size [bp]	Size distribution in CV [%]	Conc. [pg/μl]	Molarity [pmol/l]	Color
200	1,000	3,011.8	82	455	39.2	2,006.91	8,279.7	

Assay Class: High Sensitivity DNA Assay
 Data Path: Z:\...analyzerDPSC2_High Sensitivity DNA Assay_2020-03-13_001.xad

Created: 3/13/2020 11:57:00 AM
 Modified: 3/13/2020 1:26:11 PM

Electropherogram Summary Continued ...



Overall Results for sample 5 : sample 16

Number of peaks found: 31 Corr. Area 1: 3,109.5
 Noise: 0.4

Peak table for sample 5 : sample 16

Peak	Size [bp]	Conc. [pg/μl]	Molarity [pmol/l]	Observations
1	35	125.00	5,411.3	Lower Marker
2	174	217.96	1,902.4	
3	182	42.58	354.5	
4	187	30.53	246.8	
5	213	72.74	518.0	
6	226	45.58	305.9	
7	245	98.28	608.5	
8	258	48.43	284.2	
9	275	57.21	315.0	
10	284	38.54	205.9	
11	309	63.81	312.6	
12	320	44.32	209.8	
13	325	36.41	169.6	
14	356	90.03	383.7	
15	377	54.29	218.4	
16	403	50.68	190.4	
17	465	52.73	171.9	
18	500	49.34	149.4	
19	512	40.78	120.6	
20	544	38.63	107.6	
21	560	35.14	95.1	
22	576	31.53	82.9	
23	595	34.63	88.2	
24	617	34.01	83.6	
25	670	36.52	82.6	
26	695	25.49	55.6	

Assay Class: High Sensitivity DNA Assay
 Data Path: Z:\...analyzerDPSC2_High Sensitivity DNA Assay_2020-03-13_001.xad

Created: 3/13/2020 11:57:00 AM
 Modified: 3/13/2020 1:26:11 PM

Electropherogram Summary Continued ...

... Peak table for sample 5 : sample 16

Peak	Size [bp]	Conc. [pg/µl]	Molarity [pmol/l]	Observations
27	734	184.73	381.1	
28	1,518	6.42	6.4	
29	1,641	8.22	7.6	
30	2,009	7.48	5.6	
31	2,788	2.32	1.3	
32	10,380	75.00	10.9	Upper Marker
33	13,624	0.00	0.0	

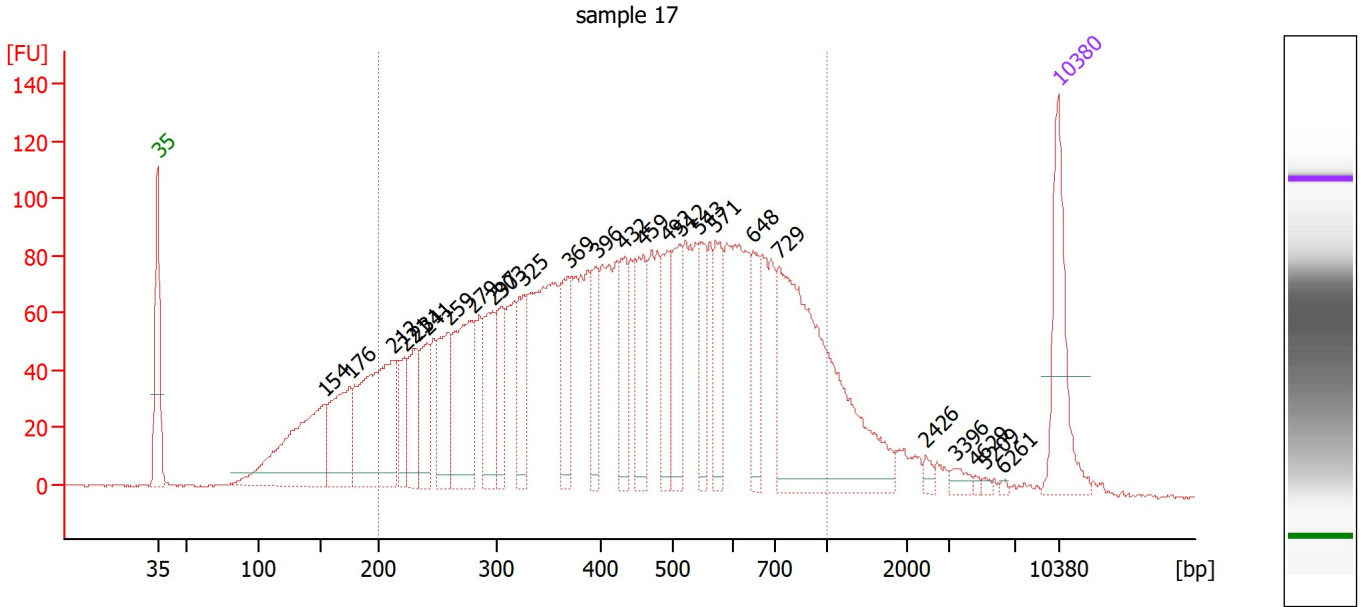
Region table for sample 5 : sample 16

From [bp]	To [bp]	Corr. Area	% of Total	Average Size [bp]	Size distribution in CV [%]	Conc. [pg/µl]	Molarity [pmol/l]	Color
200	1,000	3,109.5	82	460	39.3	1,874.35	7,668.8	

Assay Class: High Sensitivity DNA Assay
 Data Path: Z:\...analyzerDPSC2_High Sensitivity DNA Assay_2020-03-13_001.xad

Created: 3/13/2020 11:57:00 AM
 Modified: 3/13/2020 1:26:11 PM

Electropherogram Summary Continued ...



Overall Results for sample 6 : sample 17

Number of peaks found: 26 Corr. Area 1: 3,230.1
 Noise: 0.4

Peak table for sample 6 : sample 17

Peak	Size [bp]	Conc. [pg/μl]	Molarity [pmol/l]	Observations
1	35	125.00	5,411.3	Lower Marker
2	154	193.03	1,900.3	
3	176	105.89	913.9	
4	212	205.64	1,470.2	
5	221	41.00	281.0	
6	231	67.64	443.2	
7	241	56.16	353.2	
8	259	78.07	457.2	
9	279	137.12	745.9	
10	297	81.43	415.7	
11	303	50.26	251.1	
12	325	61.38	285.7	
13	369	68.01	279.2	
14	396	49.85	190.8	
15	432	53.61	188.0	
16	459	70.54	232.7	
17	492	59.90	184.4	
18	512	63.45	187.6	
19	543	47.85	133.5	
20	571	55.61	147.6	
21	648	54.47	127.4	
22	729	316.08	657.1	
23	2,426	5.45	3.4	
24	3,396	7.87	3.5	
25	4,629	2.21	0.7	
26	5,209	2.30	0.7	

Assay Class: High Sensitivity DNA Assay
 Data Path: Z:\...analyzerDPSC2_High Sensitivity DNA Assay_2020-03-13_001.xad

Created: 3/13/2020 11:57:00 AM
 Modified: 3/13/2020 1:26:11 PM

Electropherogram Summary Continued ...

... Peak table for sample 6 : sample 17

Peak	Size [bp]	Conc. [pg/μl]	Molarity [pmol/l]	Observations
27	6,261	1.95	0.5	
28	10,380	75.00	10.9	Upper Marker

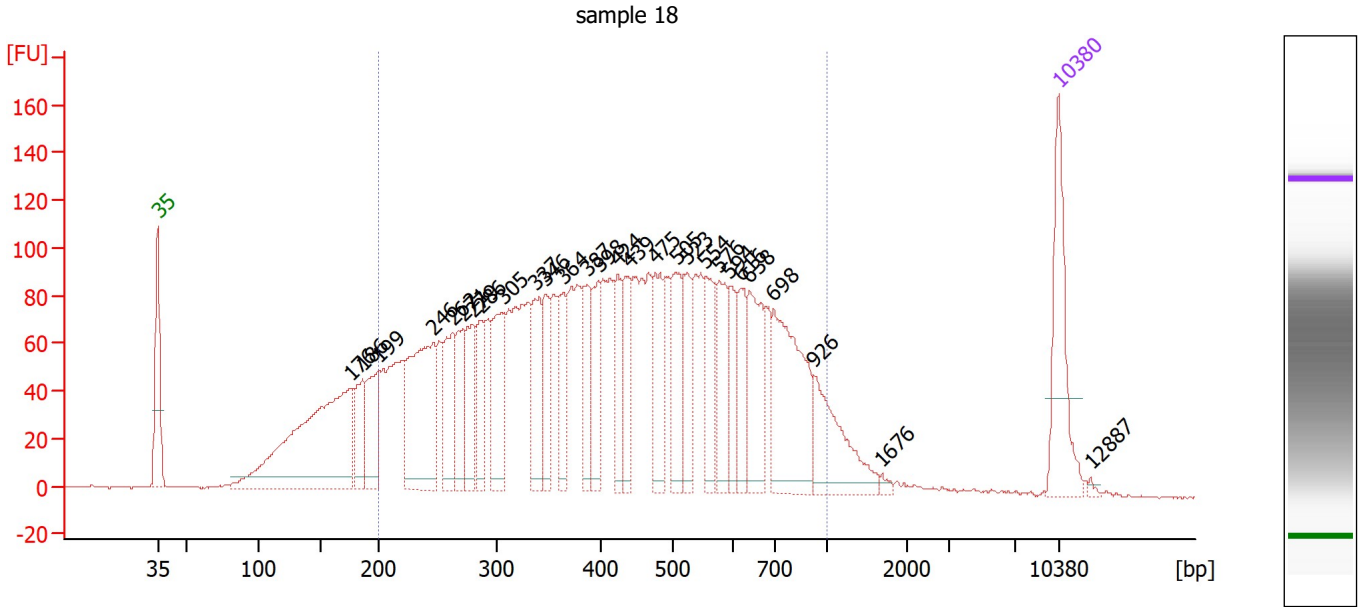
Region table for sample 6 : sample 17

From [bp]	To [bp]	Corr. Area	% of Total	Average Size [bp]	Size distribution in CV [%]	Conc. [pg/μl]	Molarity [pmol/l]	Color
200	1,000	3,230.1	82	470	39.0	2,456.59	9,860.4	■

Assay Class: High Sensitivity DNA Assay
 Data Path: Z:\...analyzerDPSC2_High Sensitivity DNA Assay_2020-03-13_001.xad

Created: 3/13/2020 11:57:00 AM
 Modified: 3/13/2020 1:26:11 PM

Electropherogram Summary Continued ...



Overall Results for sample 7 : sample 18

Number of peaks found: 28 Corr. Area 1: 3,493.9
 Noise: 0.2

Peak table for sample 7 : sample 18

Peak	Size [bp]	Conc. [pg/μl]	Molarity [pmol/l]	Observations
1	35	125.00	5,411.3	Lower Marker
2	176	325.32	2,798.4	
3	186	59.85	487.9	
4	199	74.56	567.2	
5	246	175.59	1,083.0	
6	262	74.25	429.9	
7	271	56.48	315.8	
8	279	72.13	392.1	
9	286	53.91	285.1	
10	305	84.53	420.5	
11	337	69.43	312.0	
12	346	50.04	219.1	
13	364	56.10	233.3	
14	387	51.78	202.9	
15	398	50.86	193.6	
16	424	47.71	170.5	
17	439	58.21	200.9	
18	475	67.89	216.5	
19	505	70.14	210.3	
20	523	47.60	137.8	
21	554	57.40	157.1	
22	576	57.52	151.4	
23	594	37.53	95.8	
24	616	45.31	111.4	
25	638	78.56	186.4	
26	698	145.80	316.4	

Assay Class: High Sensitivity DNA Assay
 Data Path: Z:\...analyzerDPSC2_High Sensitivity DNA Assay_2020-03-13_001.xad

Created: 3/13/2020 11:57:00 AM
 Modified: 3/13/2020 1:26:11 PM

Electropherogram Summary Continued ...

... Peak table for sample 7 : sample 18

Peak	Size [bp]	Conc. [pg/μl]	Molarity [pmol/l]	Observations
27	926	80.61	131.8	
28	1,676	3.67	3.3	
29	10,380	75.00	10.9	Upper Marker
30	12,887	0.00	0.0	

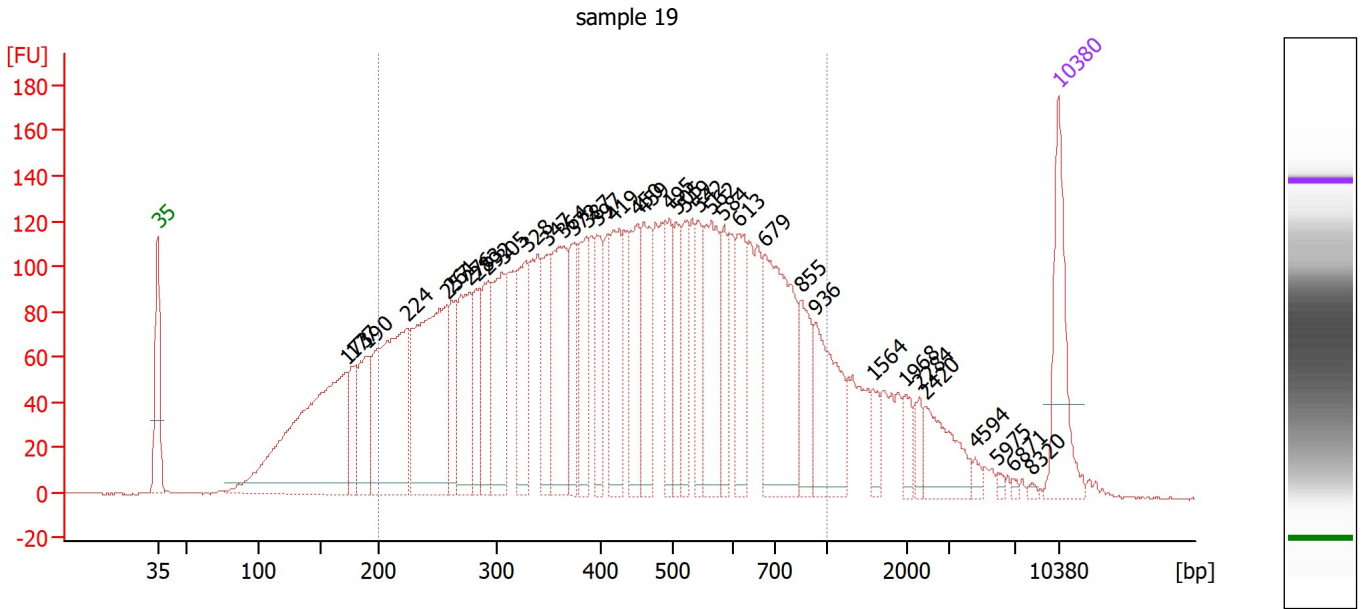
Region table for sample 7 : sample 18

From [bp]	To [bp]	Corr. Area	% of Total	Average Size [bp]	Size distribution in CV [%]	Conc. [pg/μl]	Molarity [pmol/l]	Color
200	1,000	3,493.9	84	453	38.7	2,437.39	10,046.0	■

Assay Class: High Sensitivity DNA Assay
 Data Path: Z:\...analyzerDPSC2_High Sensitivity DNA Assay_2020-03-13_001.xad

Created: 3/13/2020 11:57:00 AM
 Modified: 3/13/2020 1:26:11 PM

Electropherogram Summary Continued ...



Overall Results for sample 8 : sample 19

Number of peaks found: 37 Corr. Area 1: 4,623.1
 Noise: 0.3

Peak table for sample 8 : sample 19

Peak	Size [bp]	Conc. [pg/μl]	Molarity [pmol/l]	Observations
1	35	125.00	5,411.3	Lower Marker
2	173	374.00	3,274.3	
3	177	54.10	462.6	
4	190	86.80	691.5	
5	224	254.62	1,725.5	
6	257	260.39	1,537.9	
7	261	60.44	350.5	
8	276	116.23	637.1	
9	283	61.35	328.8	
10	292	75.78	393.8	
11	305	113.54	563.4	
12	328	89.67	414.1	
13	347	66.09	288.3	
14	364	135.32	563.2	
15	372	69.84	284.1	
16	387	73.49	287.9	
17	397	68.25	260.5	
18	419	95.52	345.7	
19	450	89.90	302.7	
20	459	81.09	267.4	
21	495	57.98	177.5	
22	505	56.76	170.2	
23	519	60.20	175.6	
24	542	54.00	151.0	
25	562	111.24	299.8	
26	584	49.34	128.1	

Assay Class: High Sensitivity DNA Assay
 Data Path: Z:\...analyzerDPSC2_High Sensitivity DNA Assay_2020-03-13_001.xad

Created: 3/13/2020 11:57:00 AM
 Modified: 3/13/2020 1:26:11 PM

Electropherogram Summary Continued ...

... Peak table for sample 8 : sample 19

Peak	Size [bp]	Conc. [pg/μl]	Molarity [pmol/l]	Observations
27	613	72.61	179.3	
28	679	181.44	405.1	
29	855	55.09	97.6	
30	936	97.14	157.2	
31	1,564	16.95	16.4	
32	1,968	17.52	13.5	
33	2,284	13.96	9.3	
34	2,420	50.14	31.4	
35	4,594	5.98	2.0	
36	5,975	2.94	0.7	
37	6,871	2.23	0.5	
38	8,320	2.14	0.4	
39	▶ 10,380	75.00	10.9	Upper Marker

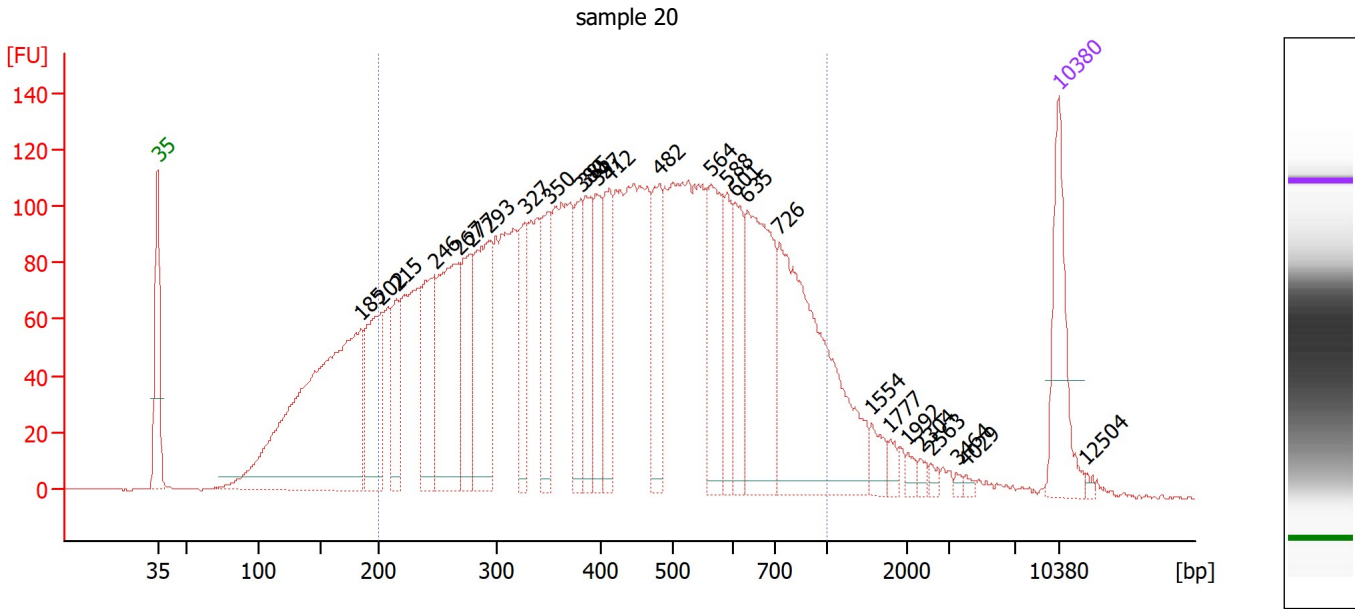
Region table for sample 8 : sample 19

From [bp]	To [bp]	Corr. Area	% of Total	Average Size [bp]	Size distribution in CV [%]	Conc. [pg/μl]	Molarity [pmol/l]	Color
200	1,000	4,623.1	78	458	39.2	3,025.87	12,393.6	■

Assay Class: High Sensitivity DNA Assay
 Data Path: Z:\...analyzerDPSC2_High Sensitivity DNA Assay_2020-03-13_001.xad

Created: 3/13/2020 11:57:00 AM
 Modified: 3/13/2020 1:26:11 PM

Electropherogram Summary Continued ...



Overall Results for sample 9 : sample 20

Number of peaks found: 27 Corr. Area 1: 4,237.1
 Noise: 0.3

Peak table for sample 9 : sample 20

Peak	Size [bp]	Conc. [pg/μl]	Molarity [pmol/l]	Observations
1	35	125.00	5,411.3	Lower Marker
2	185	527.71	4,328.4	
3	202	141.82	1,063.9	
4	215	68.24	481.7	
5	246	120.27	739.9	
6	267	195.46	1,107.6	
7	277	113.47	621.0	
8	293	161.16	832.8	
9	327	78.07	362.2	
10	350	82.26	356.6	
11	380	65.18	259.6	
12	385	75.66	297.6	
13	397	79.06	301.6	
14	412	78.72	289.3	
15	482	94.98	298.8	
16	564	118.73	318.9	
17	588	59.75	154.1	
18	601	71.99	181.3	
19	635	185.69	443.1	
20	726	303.84	633.9	
21	1,554	17.54	17.1	
22	1,777	8.60	7.3	
23	1,992	6.96	5.3	
24	2,304	5.17	3.4	
25	2,563	4.84	2.9	
26	3,464	2.91	1.3	

Assay Class: High Sensitivity DNA Assay
 Data Path: Z:\...analyzerDPSC2_High Sensitivity DNA Assay_2020-03-13_001.xad

Created: 3/13/2020 11:57:00 AM
 Modified: 3/13/2020 1:26:11 PM

Electropherogram Summary Continued ...

... Peak table for sample 9 : sample 20

Peak	Size [bp]	Conc. [pg/μl]	Molarity [pmol/l]	Observations
27	4,029	3.16	1.2	
28	10,380	75.00	10.9	Upper Marker
29	12,504	0.00	0.0	

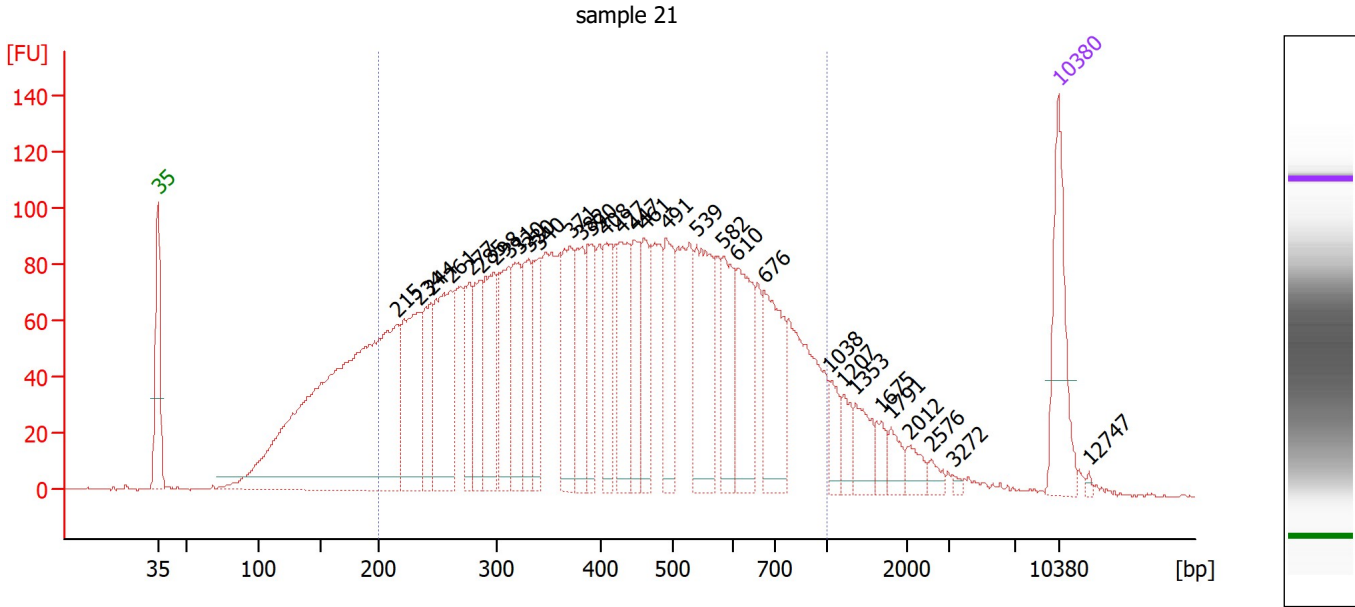
Region table for sample 9 : sample 20

From [bp]	To [bp]	Corr. Area	% of Total	Average Size [bp]	Size distribution in CV [%]	Conc. [pg/μl]	Molarity [pmol/l]	Color
200	1,000	4,237.1	81	453	39.2	3,274.10	13,548.8	■

Assay Class: High Sensitivity DNA Assay
 Data Path: Z:\...analyzerDPSC2_High Sensitivity DNA Assay_2020-03-13_001.xad

Created: 3/13/2020 11:57:00 AM
 Modified: 3/13/2020 1:26:11 PM

Electropherogram Summary Continued ...



Overall Results for sample 10 : sample 21

Number of peaks found: 32 Corr. Area 1: 3,512.9
 Noise: 0.2

Peak table for sample 10 : sample 21

Peak	Size [bp]	Conc. [pg/μl]	Molarity [pmol/l]	Observations
1	35	125.00	5,411.3	Lower Marker
2	215	699.01	4,919.1	
3	234	160.78	1,039.7	
4	244	70.88	439.5	
5	261	163.68	951.3	
6	277	63.53	347.4	
7	285	72.85	386.6	
8	298	111.60	568.2	
9	311	101.60	494.7	
10	320	87.28	413.0	
11	330	76.72	352.4	
12	340	61.67	275.2	
13	371	105.76	432.0	
14	382	76.66	304.2	
15	390	71.72	278.4	
16	408	65.90	245.0	
17	427	91.36	324.0	
18	447	64.55	218.8	
19	461	76.72	252.3	
20	491	78.40	242.1	
21	539	127.38	358.1	
22	582	80.84	210.4	
23	610	95.81	237.9	
24	676	102.24	229.3	
25	1,038	24.27	35.4	
26	1,207	20.61	25.9	

Assay Class: High Sensitivity DNA Assay
 Data Path: Z:\...analyzerDPSC2_High Sensitivity DNA Assay_2020-03-13_001.xad

Created: 3/13/2020 11:57:00 AM
 Modified: 3/13/2020 1:26:11 PM

Electropherogram Summary Continued ...

... Peak table for sample 10 : sample 21

Peak	Size [bp]	Conc. [pg/μl]	Molarity [pmol/l]	Observations
27	1,353	33.75	37.8	
28	1,675	13.30	12.0	
29	1,791	16.03	13.6	
30	2,012	14.86	11.2	
31	2,576	7.80	4.6	
32	3,272	3.02	1.4	
33	10,380	75.00	10.9	Upper Marker
34	12,747	0.00	0.0	

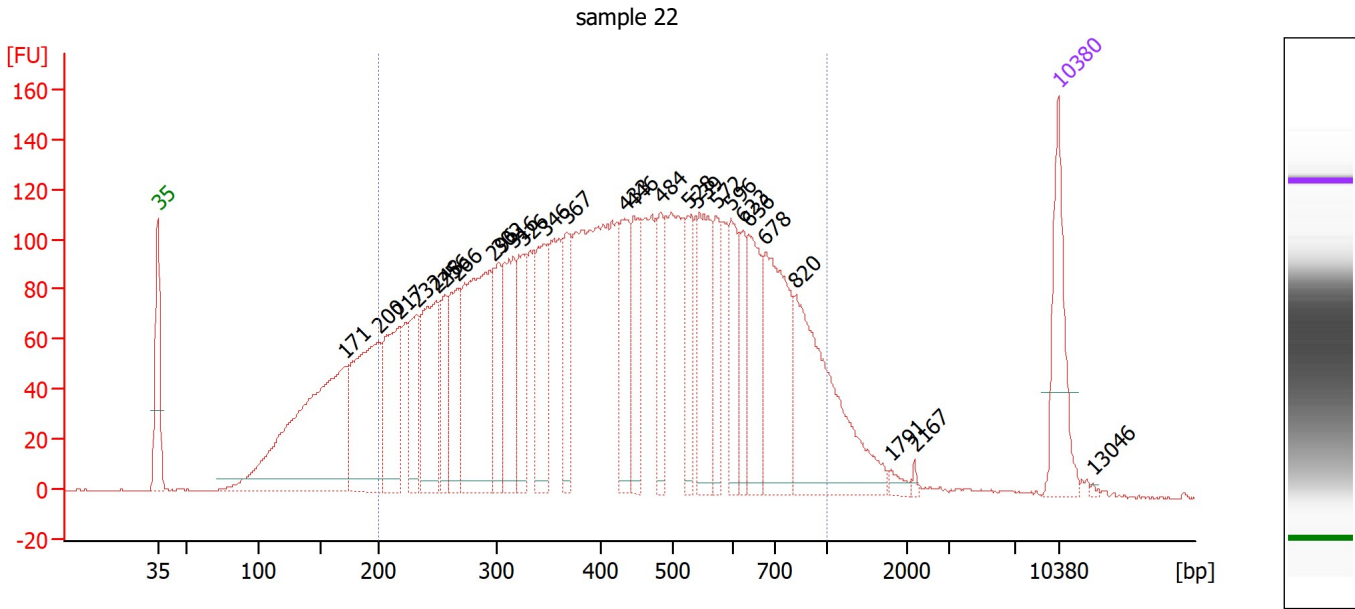
Region table for sample 10 : sample 21

From [bp]	To [bp]	Corr. Area	% of Total	Average Size [bp]	Size distribution in CV [%]	Conc. [pg/μl]	Molarity [pmol/l]	Color
200	1,000	3,512.9	80	444	39.3	2,914.10	12,255.8	

Assay Class: High Sensitivity DNA Assay
 Data Path: Z:\...analyzerDPSC2_High Sensitivity DNA Assay_2020-03-13_001.xad

Created: 3/13/2020 11:57:00 AM
 Modified: 3/13/2020 1:26:11 PM

Electropherogram Summary Continued ...



Overall Results for sample 11 : sample 22

Number of peaks found: 27 Corr. Area 1: 4,251.0
 Noise: 0.3

Peak table for sample 11 : sample 22

Peak	Size [bp]	Conc. [pg/μl]	Molarity [pmol/l]	Observations
1	35	125.00	5,411.3	Lower Marker
2	171	402.68	3,562.3	
3	200	220.07	1,670.6	
4	217	139.71	975.2	
5	232	85.72	560.0	
6	248	140.69	858.5	
7	256	65.23	386.5	
8	266	105.72	601.5	
9	296	259.79	1,327.6	
10	302	67.93	340.8	
11	316	118.46	568.0	
12	326	77.22	359.2	
13	346	112.15	490.7	
14	367	71.24	293.7	
15	433	83.13	290.9	
16	446	82.65	280.9	
17	484	62.25	195.0	
18	528	63.27	181.7	
19	539	115.31	324.1	
20	572	54.62	144.7	
21	596	67.34	171.3	
22	623	53.69	130.7	
23	636	84.66	201.6	
24	678	165.49	369.9	
25	820	209.51	387.2	
26	1,791	7.08	6.0	

Assay Class: High Sensitivity DNA Assay
 Data Path: Z:\...analyzerDPSC2_High Sensitivity DNA Assay_2020-03-13_001.xad

Created: 3/13/2020 11:57:00 AM
 Modified: 3/13/2020 1:26:11 PM

Electropherogram Summary Continued ...

... Peak table for sample 11 : sample 22

Peak	Size [bp]	Conc. [pg/μl]	Molarity [pmol/l]	Observations
27	2,167	3.13	2.2	
28	10,380	75.00	10.9	Upper Marker
29	13,046	0.00	0.0	

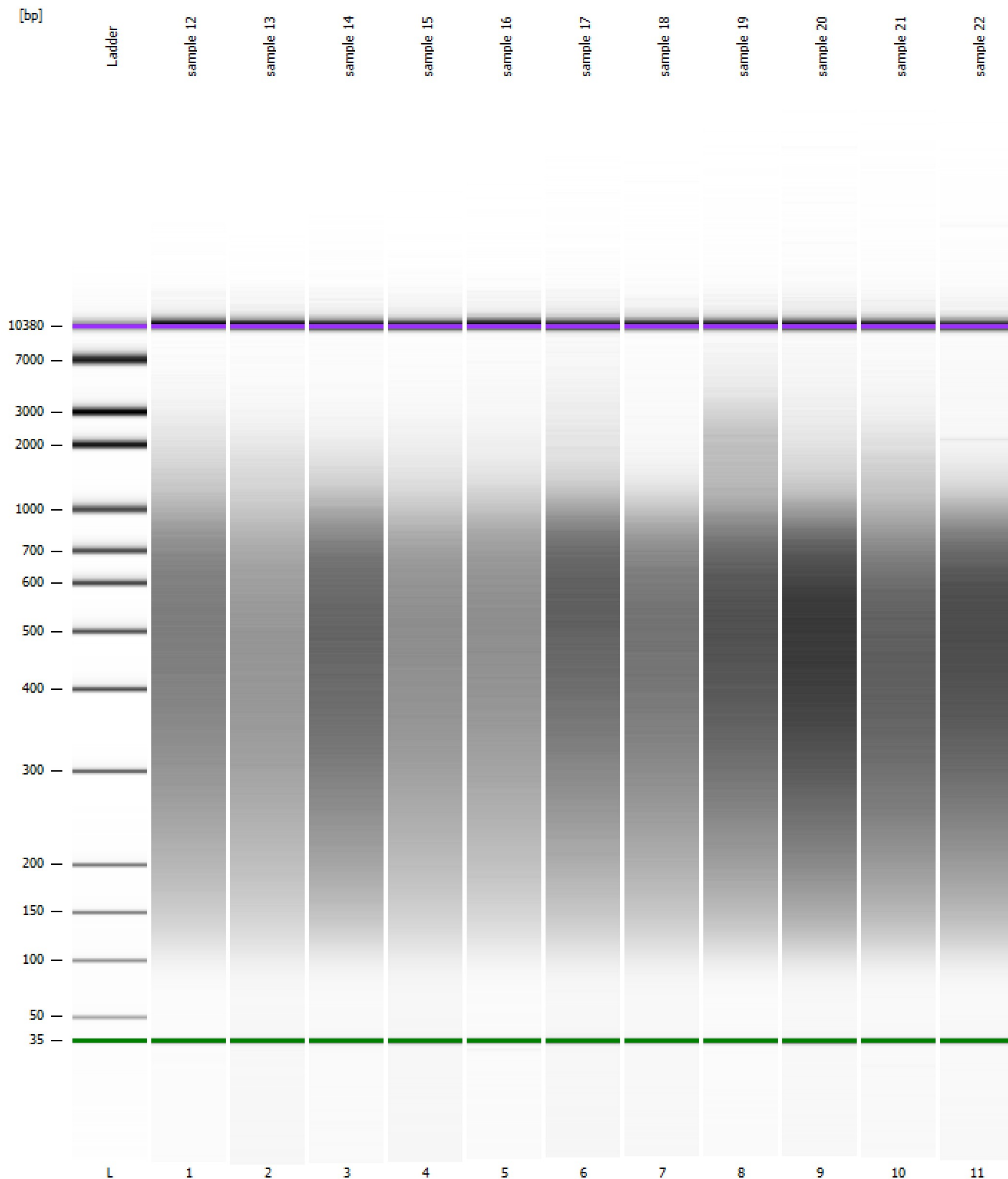
Region table for sample 11 : sample 22

From [bp]	To [bp]	Corr. Area	% of Total	Average Size [bp]	Size distribution in CV [%]	Conc. [pg/μl]	Molarity [pmol/l]	Color
200	1,000	4,251.0	83	454	38.8	3,226.28	13,280.8	■

Assay Class: High Sensitivity DNA Assay
Data Path: Z:\...analyzerDPSC2_High Sensitivity DNA Assay_2020-03-13_001.xad

Created: 3/13/2020 11:57:00 AM
Modified: 3/13/2020 1:26:11 PM

Gel Image



Assay Class: High Sensitivity DNA Assay
 Data Path: Z:\...analyzerDPSC2_High Sensitivity DNA Assay_2020-03-13_001.xad

Created: 3/13/2020 11:57:00 AM
 Modified: 3/13/2020 1:26:11 PM

Run Logbook

Description	Number	Source	Category	Sub Category	Time	Time Zone	User	Host
Run ended on port 1 (Number of wells acquired: 12)		Instrument	Run		3/13/2020 2:37:27 PM	(GMT --07:00) Pacific Standard Time	sbsuser	DESKTOP-4UNV VOB
Run started on port 1 (File: Z:\XADs\2020-03-13\Bioanalyze rDPSC2_High Sensitivity DNA Assay_2020-03-13_001.xad)		Instrument	Run		3/13/2020 1:57:06 PM	(GMT --07:00) Pacific Standard Time	sbsuser	DESKTOP-4UNV VOB
Product Number : G2938C		Instrument	Run		3/13/2020 1:57:06 PM	(GMT --07:00) Pacific Standard Time	sbsuser	DESKTOP-4UNV VOB
Name :		Instrument	Run		3/13/2020 1:57:06 PM	(GMT --07:00) Pacific Standard Time	sbsuser	DESKTOP-4UNV VOB
Vendor : Agilent Technologies		Instrument	Run		3/13/2020 1:57:06 PM	(GMT --07:00) Pacific Standard Time	sbsuser	DESKTOP-4UNV VOB
Serial# : DE34903152		Instrument	Run		3/13/2020 1:57:06 PM	(GMT --07:00) Pacific Standard Time	sbsuser	DESKTOP-4UNV VOB
Firmware : C.01.069		Instrument	Run		3/13/2020 1:57:06 PM	(GMT --07:00) Pacific Standard Time	sbsuser	DESKTOP-4UNV VOB
Cartridge : Electrode		Instrument	Run		3/13/2020 1:57:06 PM	(GMT --07:00) Pacific Standard Time	sbsuser	DESKTOP-4UNV VOB