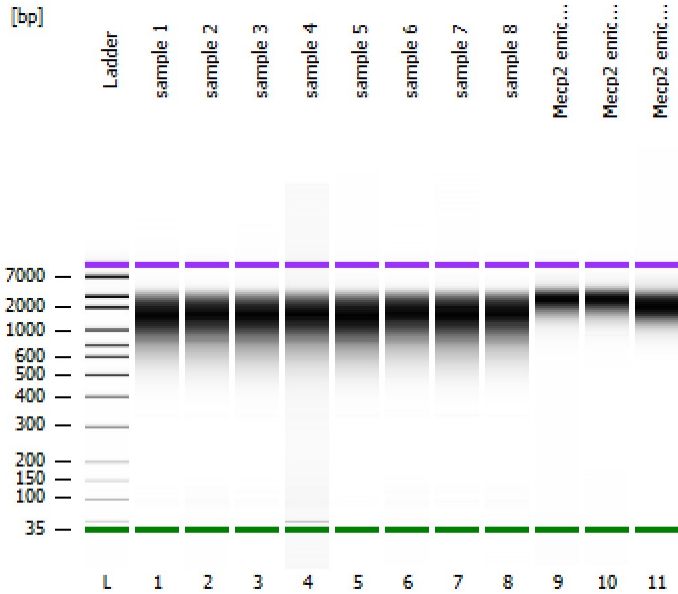


Assay Class: High Sensitivity DNA Assay
Data Path: Z:\...zer_High Sensitivity DNA Assay_2019-12-12_001_mecp2_p60.xad

Created: 12/12/2019 12:10:11 PM
Modified: 12/12/2019 4:46:33 PM

Electrophoresis File Run Summary



Instrument Information:

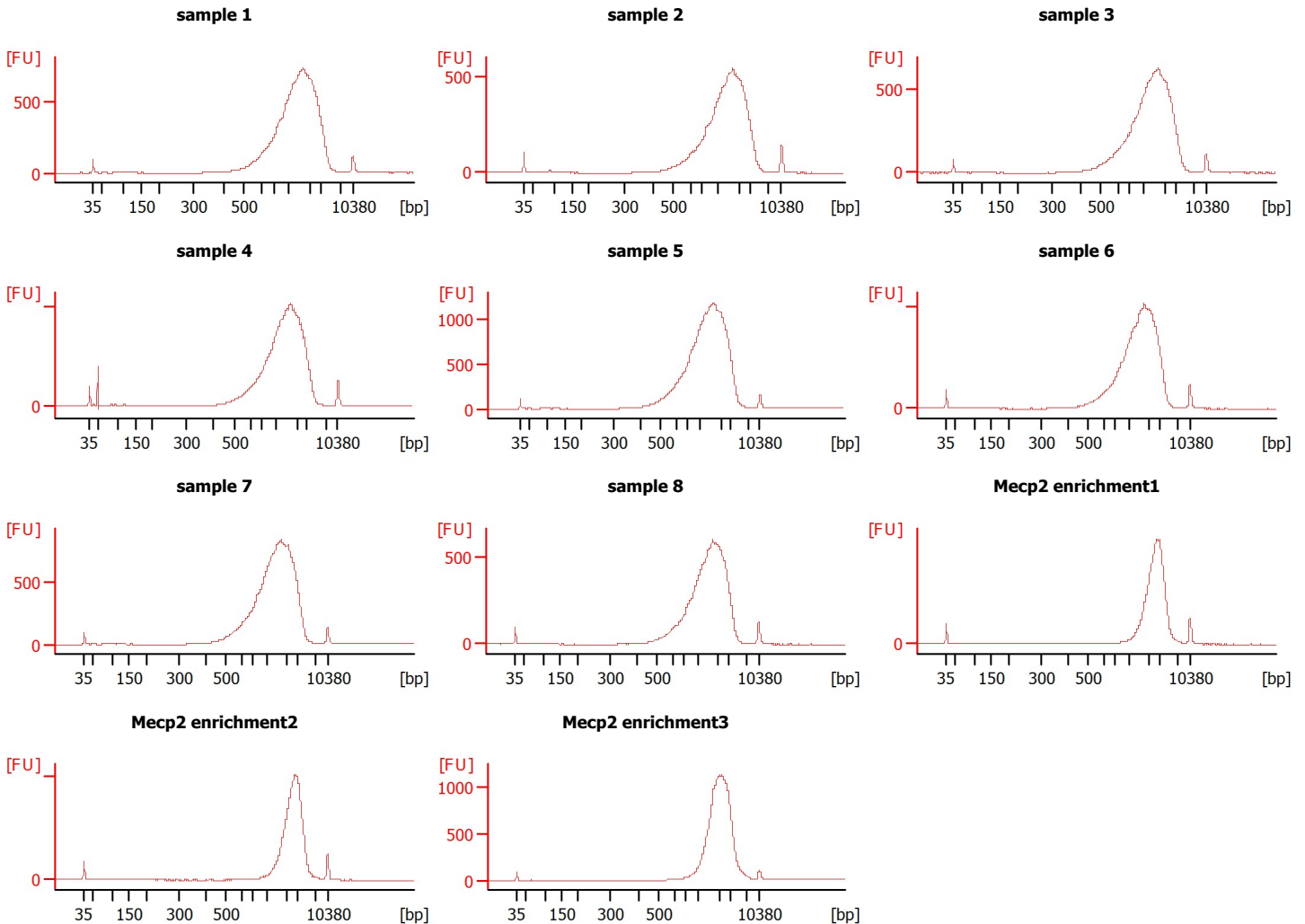
Instrument Name: DE34903152 Firmware: C.01.069
Serial#: DE34903152 Type: G2938C

Assay Information:

Assay Origin Path: C:\Program Files (x86)\Agilent\2100 bioanalyzer\2100 expert\assays\dsDNA\High Sensitivity DNA.xsy
Assay Class: High Sensitivity DNA Assay
Version: 1.03
Assay Comments: Copyright © 2003-2010 Agilent Technologies

Chip Information:

Chip Lot #:
Reagent Kit Lot #:
Chip Comments:



Assay Class: High Sensitivity DNA Assay
 Data Path: Z:\...zer_High Sensitivity DNA Assay_2019-12-12_001_mecp2_p60.xad

Created: 12/12/2019 12:10:11 PM
 Modified: 12/12/2019 4:46:33 PM

Electrophoresis File Run Summary (Chip Summary)

Sample Name	Sample Comment	Rest. Digest	Status	Observation	Result Label	Result Color
sample 1		<input type="checkbox"/>	✓			
sample 2		<input type="checkbox"/>	✓			
sample 3		<input type="checkbox"/>	✓			
sample 4		<input type="checkbox"/>	✓			
sample 5		<input type="checkbox"/>	✓			
sample 6		<input type="checkbox"/>	✓			
sample 7		<input type="checkbox"/>	✓			
sample 8		<input type="checkbox"/>	✓			
Mecp2 enrichment1		<input type="checkbox"/>	✓			
Mecp2 enrichment2		<input type="checkbox"/>	✓			
Mecp2 enrichment3		<input type="checkbox"/>	✓			
Ladder		<input type="checkbox"/>	✓			

Chip Lot #

Reagent Kit Lot #

Chip Comments :

Assay Class: High Sensitivity DNA Assay
 Data Path: Z:\...zer_High Sensitivity DNA Assay_2019-12-12_001_mecp2_p60.xad

Created: 12/12/2019 12:10:11 PM
 Modified: 12/12/2019 4:46:33 PM

Electrophoresis Assay Details

General Analysis Settings

Number of Available Sample and Ladder Wells (Max.) : 12
 Minimum Visible Range [s] : 32
 Maximum Visible Range [s] : 138
 Start Analysis Time Range [s] : 33
 End Analysis Time Range [s] : 137.5
 Ladder Concentration [pg/μl] : 1950
 Uses Standard Area for Ladder Fragments
 Lower Marker Concentration [pg/μl] : 125
 Upper Marker Concentration [pg/μl] : 75
 Used Upper Marker for Quantitation
 Standard Curve Fit is Point to Point
 Show Data Aligned to Lower and Upper Marker

Integrator Settings

Integration Start Time [s] : 33.05
 Integration End Time [s] : 137
 Slope Threshold : 0.8
 Height Threshold [FU] : 5
 Area Threshold : 0.1
 Width Threshold [s] : 0.6
 Baseline Plateau [s] : 0.5

Filter Settings

Filter Width [s] : 0.5
 Polynomial Order : 4

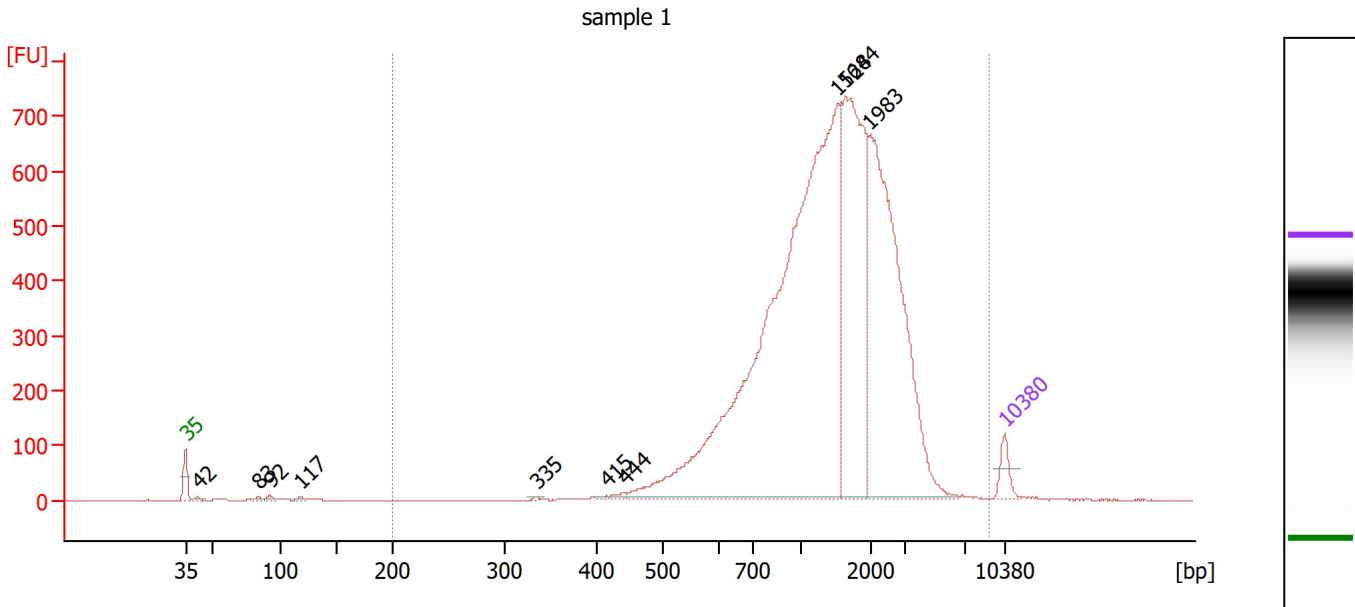
Ladder

Ladder Peak	Size	Area
1	35	160
2	50	210
3	100	208
4	150	221
5	200	242
6	300	270
7	400	305
8	500	306
9	600	336
10	700	321
11	1000	366
12	2000	413
13	3000	411
14	7000	400
15	10380	214

Assay Class: High Sensitivity DNA Assay
 Data Path: Z:\...zer_High Sensitivity DNA Assay_2019-12-12_001_mecp2_p60.xad

Created: 12/12/2019 12:10:11 PM
 Modified: 12/12/2019 4:46:33 PM

Electropherogram Summary



Overall Results for sample 1 : sample 1

Number of peaks found: 10 Corr. Area 1: 9,148.4
 Noise: 0.2

Peak table for sample 1 : sample 1

Peak	Size [bp]	Conc. [pg/μl]	Molarity [pmol/l]	Observations
1	35	125.00	5,411.3	Lower Marker
2	42	18.44	671.1	
3	83	16.65	302.8	
4	92	21.09	347.1	
5	117	14.64	189.2	
6	335	7.36	33.3	
7	415	7.43	27.2	
8	444	18.45	63.0	
9	1,528	4,436.55	4,399.1	
10	1,644	1,433.12	1,321.1	
11	1,983	1,840.35	1,406.5	
12	10,380	75.00	10.9	Upper Marker

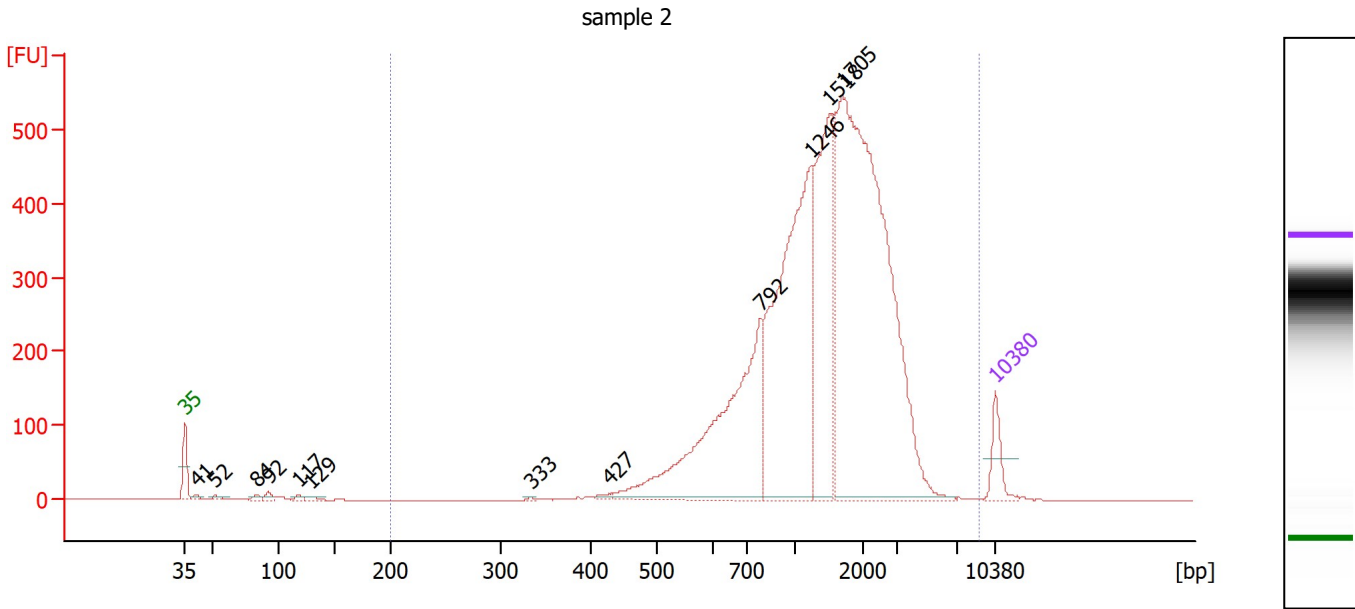
Region table for sample 1 : sample 1

From [bp]	To [bp]	Corr. Area	% of Total	Average Size [bp]	Size distribution in CV [%]	Conc. [pg/μl]	Molarity [pmol/l]	Color
200	9,000	9,148.4	99	1,588	54.2	8,471.64	11,128.6	Blue

Assay Class: High Sensitivity DNA Assay
 Data Path: Z:\...zer_High Sensitivity DNA Assay_2019-12-12_001_mecp2_p60.xad

Created: 12/12/2019 12:10:11 PM
 Modified: 12/12/2019 4:46:33 PM

Electropherogram Summary Continued ...



Overall Results for sample 2 : sample 2

Number of peaks found: 12 Corr. Area 1: 6,636.0
 Noise: 0.3

Peak table for sample 2 : sample 2

Peak	Size [bp]	Conc. [pg/μl]	Molarity [pmol/l]	Observations
1	35	125.00	5,411.3	Lower Marker
2	41	16.80	614.7	
3	52	16.88	494.1	
4	84	14.80	267.4	
5	92	21.90	361.0	
6	117	13.49	174.1	
7	129	16.16	190.2	
8	333	4.49	20.4	
9	427	11.85	42.0	
10	792	999.45	1,912.3	
11	1,246	1,175.48	1,429.7	
12	1,518	610.16	608.9	
13	1,705	2,010.47	1,786.5	
14	10,380	75.00	10.9	Upper Marker

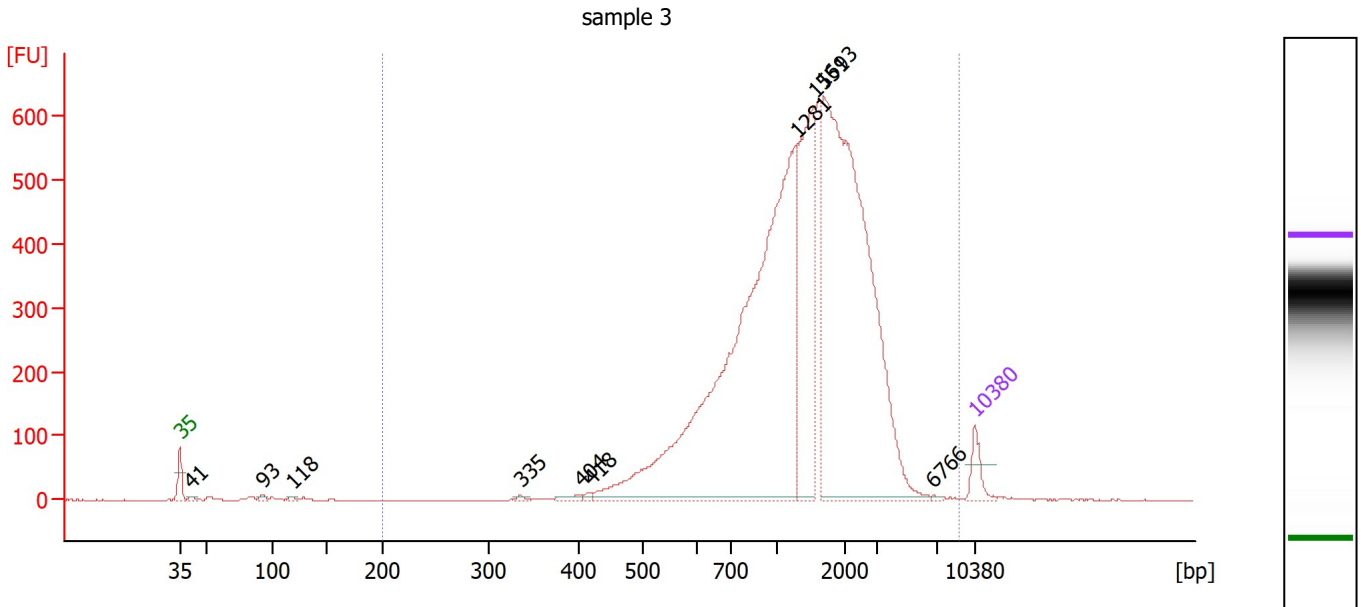
Region table for sample 2 : sample 2

From [bp]	To [bp]	Corr. Area	% of Total	Average Size [bp]	Size distribution in CV [%]	Conc. [pg/μl]	Molarity [pmol/l]	Color
200	9,000	6,636.0	99	1,594	53.7	4,987.15	6,557.1	Blue

Assay Class: High Sensitivity DNA Assay
 Data Path: Z:\...zer_High Sensitivity DNA Assay_2019-12-12_001_mecp2_p60.xad

Created: 12/12/2019 12:10:11 PM
 Modified: 12/12/2019 4:46:33 PM

Electropherogram Summary Continued ...



Overall Results for sample 3 : sample 3

Number of peaks found: 10 Corr. Area 1: 8,035.0
 Noise: 0.3

Peak table for sample 3 : sample 3

Peak	Size [bp]	Conc. [pg/μl]	Molarity [pmol/l]	Observations
1	35	125.00	5,411.3	Lower Marker
2	41	15.57	572.3	
3	93	17.17	280.6	
4	118	11.61	148.6	
5	335	11.56	52.3	
6	404	23.17	86.9	
7	418	14.48	52.5	
8	1,281	3,155.16	3,732.9	
9	1,551	806.53	788.1	
10	1,693	2,582.54	2,310.8	
11	6,766	5.13	1.1	
12	10,380	75.00	10.9	Upper Marker

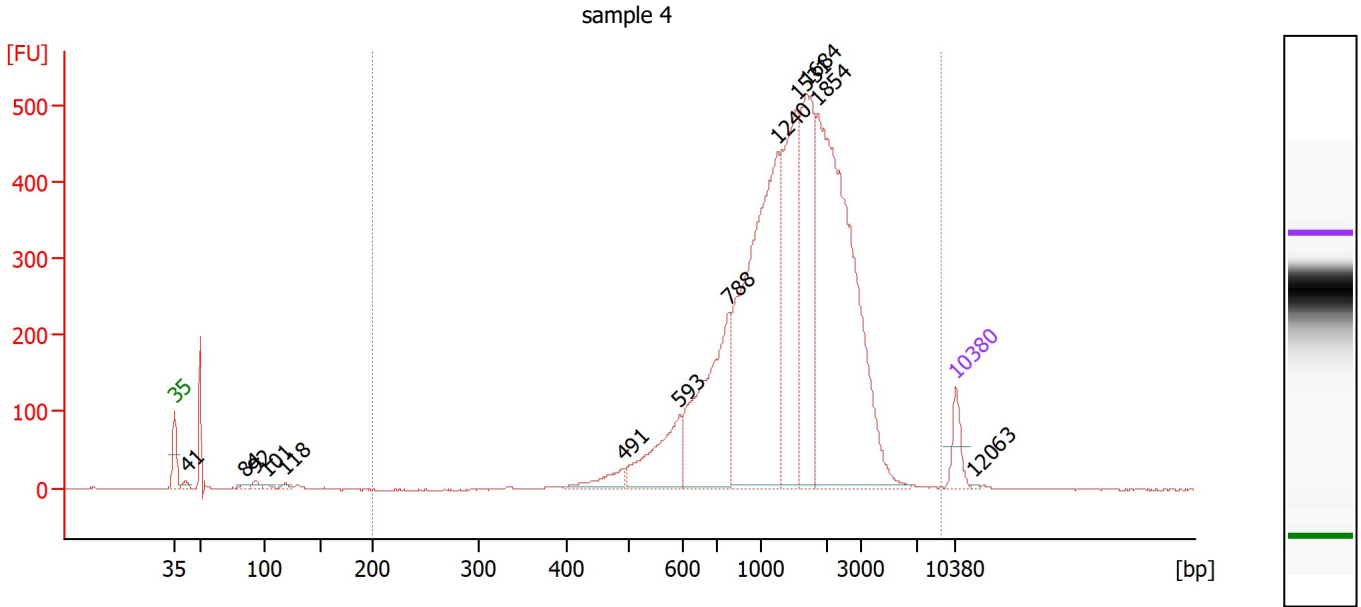
Region table for sample 3 : sample 3

From [bp]	To [bp]	Corr. Area	% of Total	Average Size [bp]	Size distribution in CV [%]	Conc. [pg/μl]	Molarity [pmol/l]	Color
200	9,000	8,035.0	99	1,556	55.9	7,236.86	9,923.4	Blue

Assay Class: High Sensitivity DNA Assay
 Data Path: Z:\...zer_High Sensitivity DNA Assay_2019-12-12_001_mecp2_p60.xad

Created: 12/12/2019 12:10:11 PM
 Modified: 12/12/2019 4:46:33 PM

Electropherogram Summary Continued ...



Overall Results for sample 4 : sample 4

Number of peaks found: 13 Corr. Area 1: 6,274.9
 Noise: 0.4

Peak table for sample 4 : sample 4

Peak	Size [bp]	Conc. [pg/μl]	Molarity [pmol/l]	Observations
1	35	125.00	5,411.3	Lower Marker
2	41	21.85	806.6	
3	84	16.08	290.4	
4	92	23.62	388.0	
5	101	13.89	209.1	
6	118	15.32	196.2	
7	491	93.64	289.2	
8	593	306.25	782.4	
9	788	692.31	1,331.6	
10	1,240	1,253.24	1,531.7	
11	1,531	674.39	667.5	
12	1,684	573.72	516.1	
13	1,854	1,465.87	1,198.0	
14	10,380	75.00	10.9	Upper Marker
15	12,063	0.00	0.0	

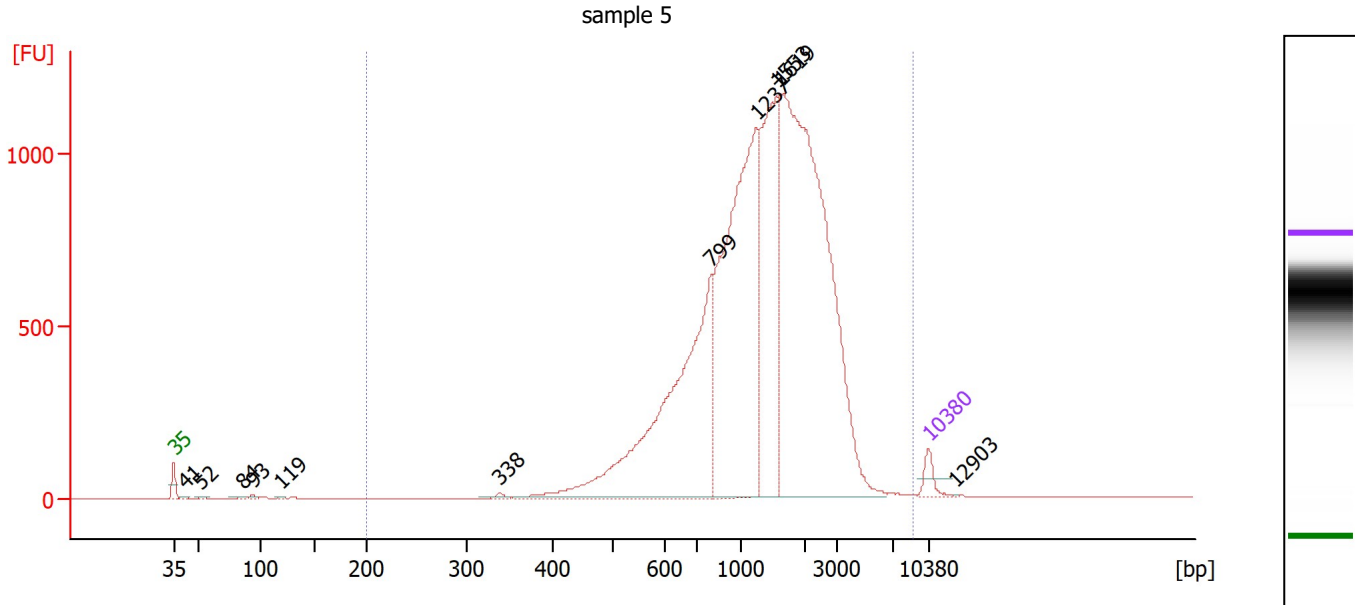
Region table for sample 4 : sample 4

From [bp]	To [bp]	Corr. Area	% of Total	Average Size [bp]	Size distribution in CV [%]	Conc. [pg/μl]	Molarity [pmol/l]	Color
200	9,000	6,274.9	97	1,584	54.3	5,144.64	6,805.6	Blue

Assay Class: High Sensitivity DNA Assay
 Data Path: Z:\...zer_High Sensitivity DNA Assay_2019-12-12_001_mecp2_p60.xad

Created: 12/12/2019 12:10:11 PM
 Modified: 12/12/2019 4:46:33 PM

Electropherogram Summary Continued ...



Overall Results for sample 5 : sample 5

Number of peaks found: 11 Corr. Area 1: 15,588.0
 Noise: 0.3

Peak table for sample 5 : sample 5

Peak	Size [bp]	Conc. [pg/μl]	Molarity [pmol/l]	Observations
1	35	125.00	5,411.3	Lower Marker
2	41	15.38	565.6	
3	52	12.69	372.6	
4	84	11.64	209.5	
5	93	17.12	278.4	
6	119	10.87	138.7	
7	338	21.33	95.6	
8	799	2,409.87	4,569.5	
9	1,237	2,489.30	3,049.6	
10	1,553	1,305.19	1,273.6	
11	1,619	3,810.42	3,565.4	
12	10,380	75.00	10.9	Upper Marker
13	12,903	0.00	0.0	

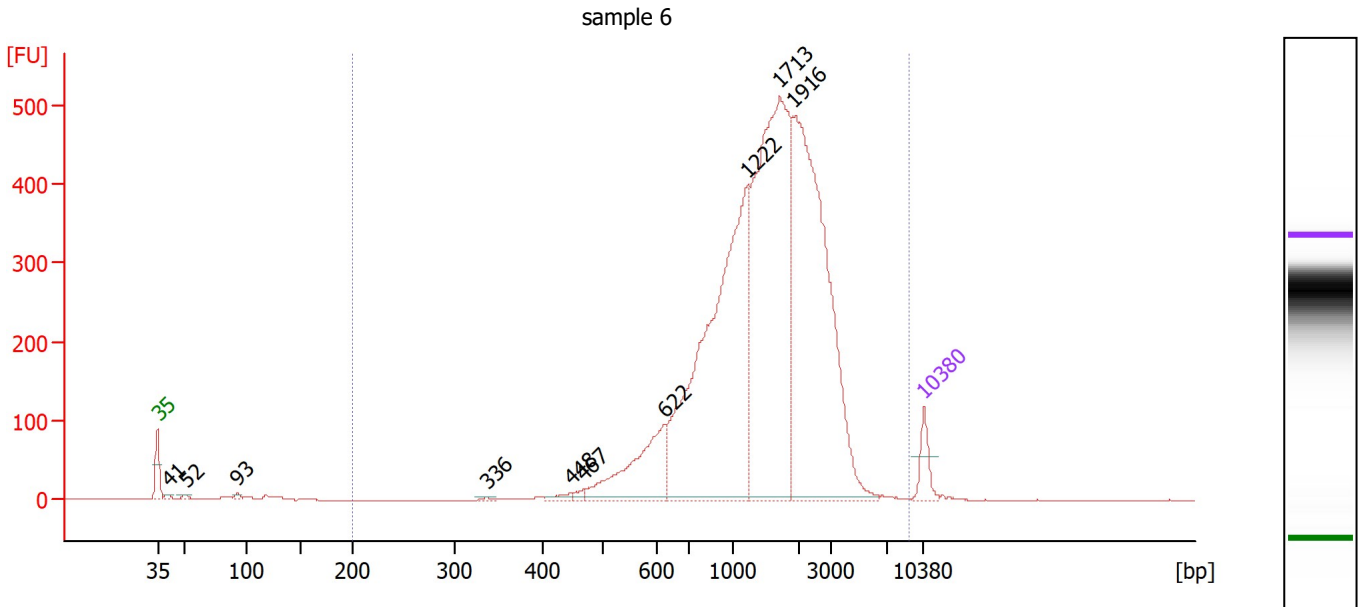
Region table for sample 5 : sample 5

From [bp]	To [bp]	Corr. Area	% of Total	Average Size [bp]	Size distribution in CV [%]	Conc. [pg/μl]	Molarity [pmol/l]	Color
200	9,000	15,588.0	99	1,536	56.8	10,219.41	14,223.3	Blue

Assay Class: High Sensitivity DNA Assay
 Data Path: Z:\...zer_High Sensitivity DNA Assay_2019-12-12_001_mecp2_p60.xad

Created: 12/12/2019 12:10:11 PM
 Modified: 12/12/2019 4:46:33 PM

Electropherogram Summary Continued ...



Overall Results for sample 6 : sample 6

Number of peaks found: 10 Corr. Area 1: 6,005.4
 Noise: 0.5

Peak table for sample 6 : sample 6

Peak	Size [bp]	Conc. [pg/μl]	Molarity [pmol/l]	Observations
1	35	125.00	5,411.3	Lower Marker
2	41	13.84	515.2	
3	52	13.21	388.3	
4	93	17.35	283.9	
5	336	8.52	38.4	
6	448	25.67	86.9	
7	467	20.47	66.4	
8	622	426.53	1,038.8	
9	1,222	1,691.04	2,096.2	
10	1,713	1,637.08	1,447.8	
11	1,916	1,583.19	1,251.7	
12	10,380	75.00	10.9	Upper Marker

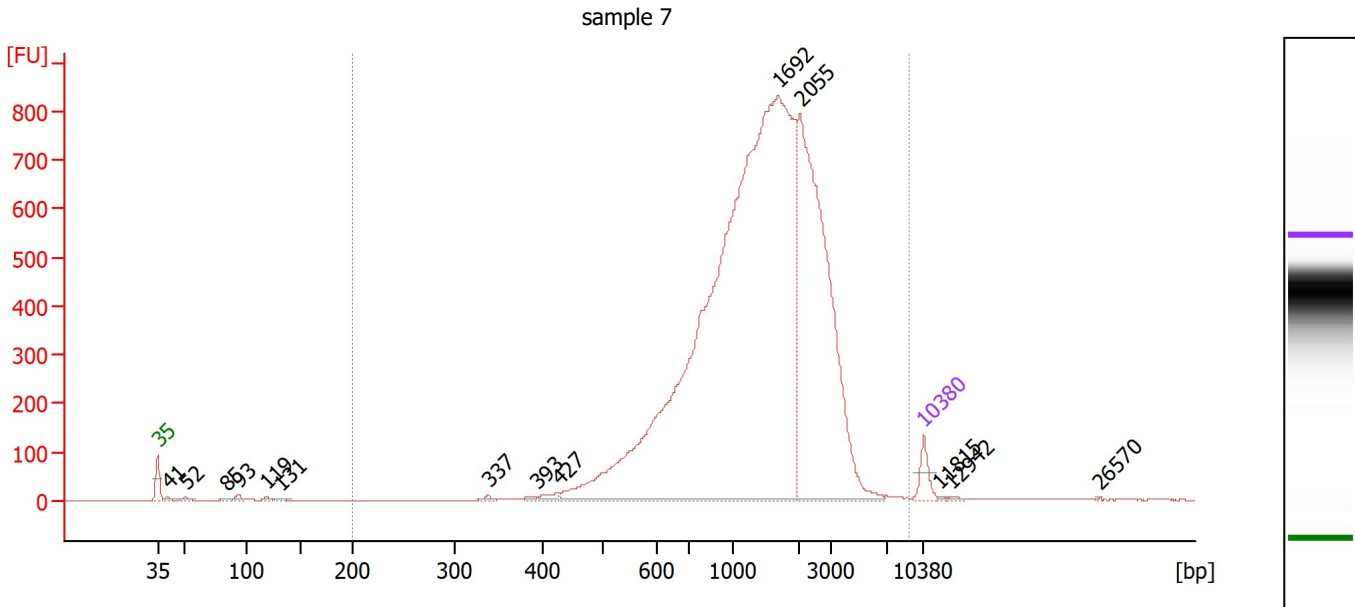
Region table for sample 6 : sample 6

From [bp]	To [bp]	Corr. Area	% of Total	Average Size [bp]	Size distribution in CV [%]	Conc. [pg/μl]	Molarity [pmol/l]	Color
200	9,000	6,005.4	99	1,658	53.0	5,580.39	7,012.4	Blue

Assay Class: High Sensitivity DNA Assay
 Data Path: Z:\...zer_High Sensitivity DNA Assay_2019-12-12_001_mecp2_p60.xad

Created: 12/12/2019 12:10:11 PM
 Modified: 12/12/2019 4:46:33 PM

Electropherogram Summary Continued ...



Overall Results for sample 7 : sample 7

Number of peaks found: 14 Corr. Area 1: 10,511.0
 Noise: 0.3

Peak table for sample 7 : sample 7

Peak	Size [bp]	Conc. [pg/μl]	Molarity [pmol/l]	Observations
1	35	125.00	5,411.3	Lower Marker
2	41	16.58	615.8	
3	52	19.78	582.1	
4	85	17.10	305.6	
5	93	25.23	409.9	
6	119	15.30	194.5	
7	131	15.03	173.6	
8	337	16.86	75.7	
9	393	12.16	46.9	
10	427	33.23	118.0	
11	1,692	5,980.00	5,356.3	
12	2,055	1,987.30	1,465.3	
13	10,380	75.00	10.9	Upper Marker
14	11,815	0.00	0.0	
15	12,942	0.00	0.0	
16	26,570	0.00	0.0	

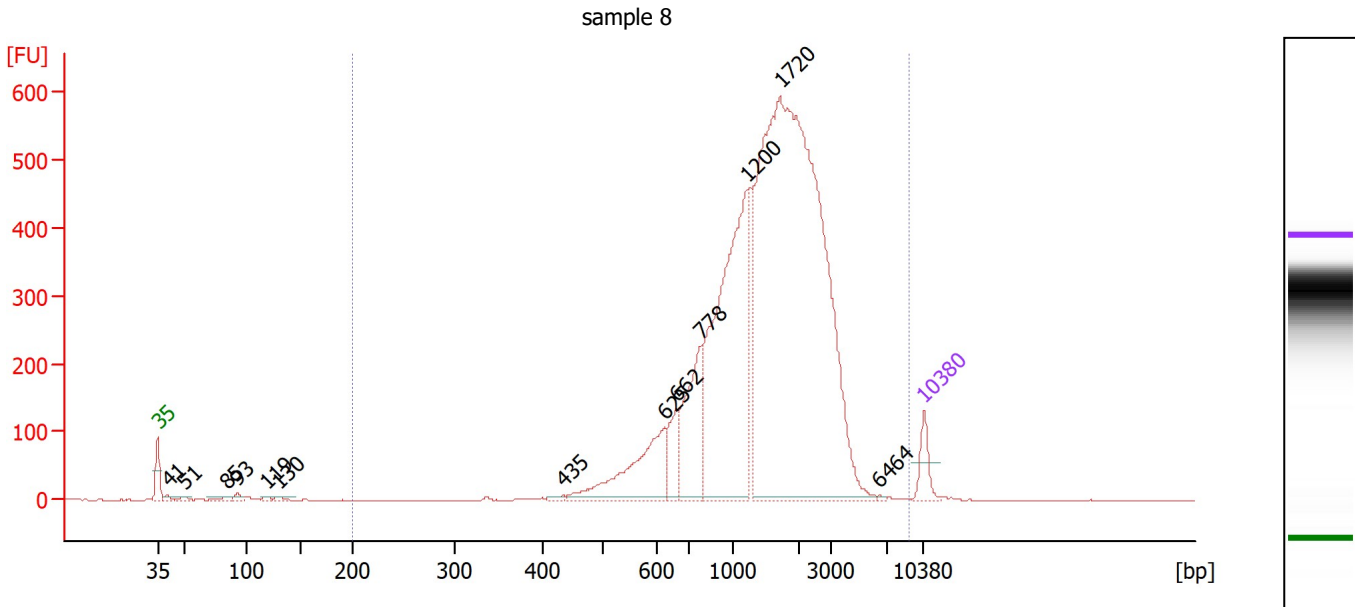
Region table for sample 7 : sample 7

From [bp]	To [bp]	Corr. Area	% of Total	Average Size [bp]	Size distribution in CV [%]	Conc. [pg/μl]	Molarity [pmol/l]	Color
200	9,000	10,511.0	99	1,602	55.7	8,859.35	11,816.2	Blue

Assay Class: High Sensitivity DNA Assay
 Data Path: Z:\...zer_High Sensitivity DNA Assay_2019-12-12_001_mecp2_p60.xad

Created: 12/12/2019 12:10:11 PM
 Modified: 12/12/2019 4:46:33 PM

Electropherogram Summary Continued ...



Overall Results for sample 8 : sample 8

Number of peaks found: 13 Corr. Area 1: 6,813.7
 Noise: 0.4

Peak table for sample 8 : sample 8

Peak	Size [bp]	Conc. [pg/μl]	Molarity [pmol/l]	Observations
1	35	125.00	5,411.3	Lower Marker
2	41	18.94	702.9	
3	51	18.00	532.6	
4	85	22.89	409.4	
5	93	23.79	388.6	
6	119	15.20	193.8	
7	130	18.84	218.9	
8	435	11.82	41.2	
9	625	425.17	1,030.2	
10	662	153.71	351.6	
11	778	386.00	752.0	
12	1,200	1,282.82	1,619.8	
13	1,720	3,240.66	2,854.5	
14	6,464	3.42	0.8	
15	10,380	75.00	10.9	Upper Marker

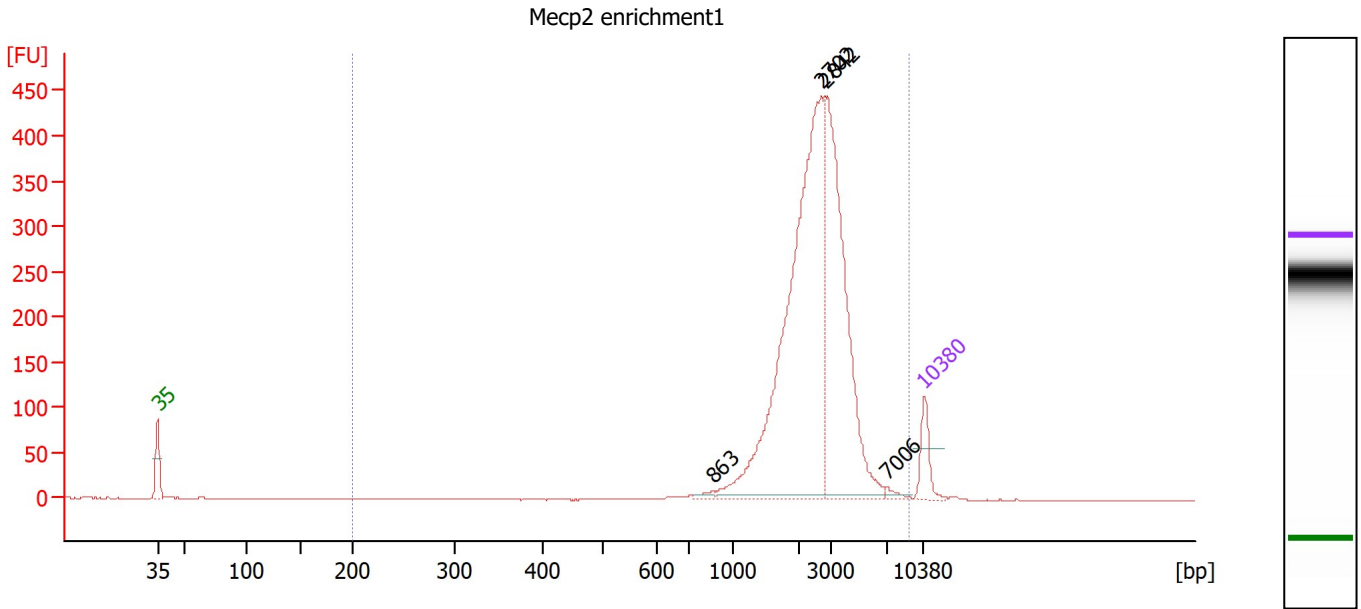
Region table for sample 8 : sample 8

From [bp]	To [bp]	Corr. Area	% of Total	Average Size [bp]	Size distribution in CV [%]	Conc. [pg/μl]	Molarity [pmol/l]	Color
200	9,000	6,813.7	99	1,662	52.4	5,691.40	7,098.4	Blue

Assay Class: High Sensitivity DNA Assay
 Data Path: Z:\...zer_High Sensitivity DNA Assay_2019-12-12_001_mecp2_p60.xad

Created: 12/12/2019 12:10:11 PM
 Modified: 12/12/2019 4:46:33 PM

Electropherogram Summary Continued ...



Overall Results for sample 9 : Mecp2 enrichment1

Number of peaks found: 4 Corr. Area 1: 2,596.8
 Noise: 0.3

Peak table for sample 9 : Mecp2 enrichment1

Peak	Size [bp]	Conc. [pg/μl]	Molarity [pmol/l]	Observations
1	35	125.00	5,411.3	Lower Marker
2	863	13.29	23.3	
3	2,702	1,314.63	737.1	
4	2,842	795.20	424.0	
5	7,006	13.78	3.0	
6	10,380	75.00	10.9	Upper Marker

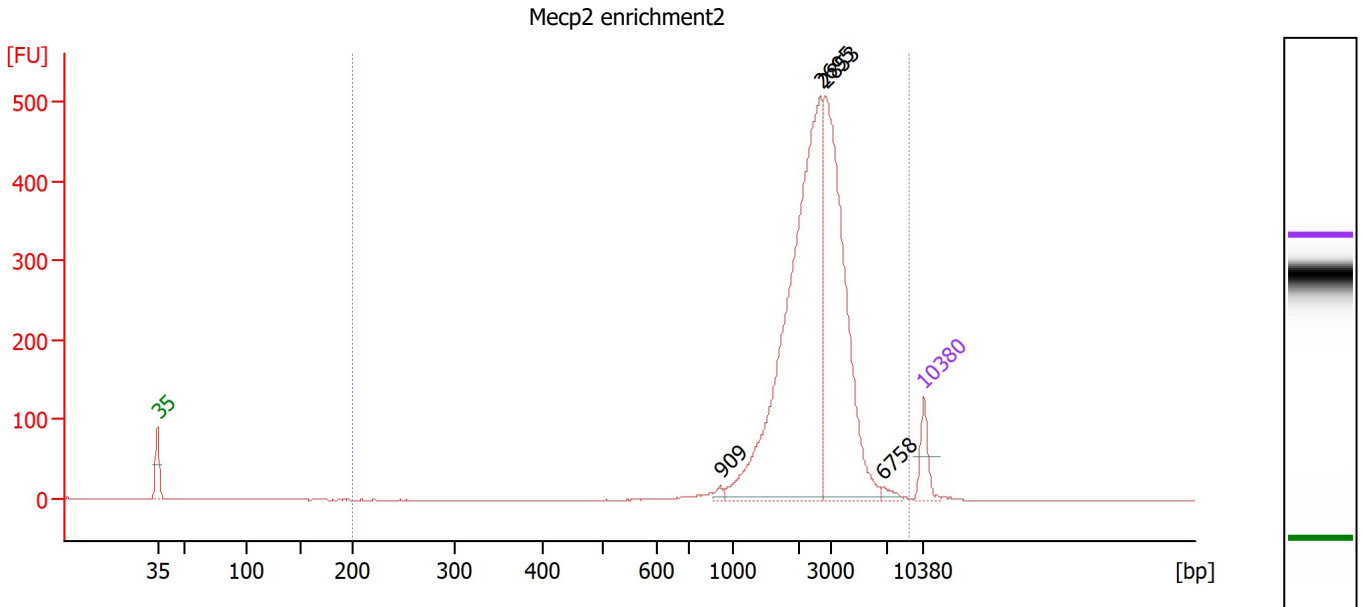
Region table for sample 9 : Mecp2 enrichment1

From [bp]	To [bp]	Corr. Area	% of Total	Average Size [bp]	Size distribution in CV [%]	Conc. [pg/μl]	Molarity [pmol/l]	Color
200	9,000	2,596.8	100	2,724	39.2	2,198.98	1,410.9	Blue

Assay Class: High Sensitivity DNA Assay
 Data Path: Z:\...zer_High Sensitivity DNA Assay_2019-12-12_001_mecp2_p60.xad

Created: 12/12/2019 12:10:11 PM
 Modified: 12/12/2019 4:46:33 PM

Electropherogram Summary Continued ...



Overall Results for sample 10 : Mecp2 enrichment2

Number of peaks found: 4 Corr. Area 1: 2,957.5
 Noise: 0.2

Peak table for sample 10 : Mecp2 enrichment2

Peak	Size [bp]	Conc. [pg/μl]	Molarity [pmol/l]	Observations
1	35	125.00	5,411.3	Lower Marker
2	909	13.32	22.2	
3	2,695	1,446.72	813.3	
4	2,853	935.27	496.8	
5	6,758	17.27	3.9	
6	10,380	75.00	10.9	Upper Marker

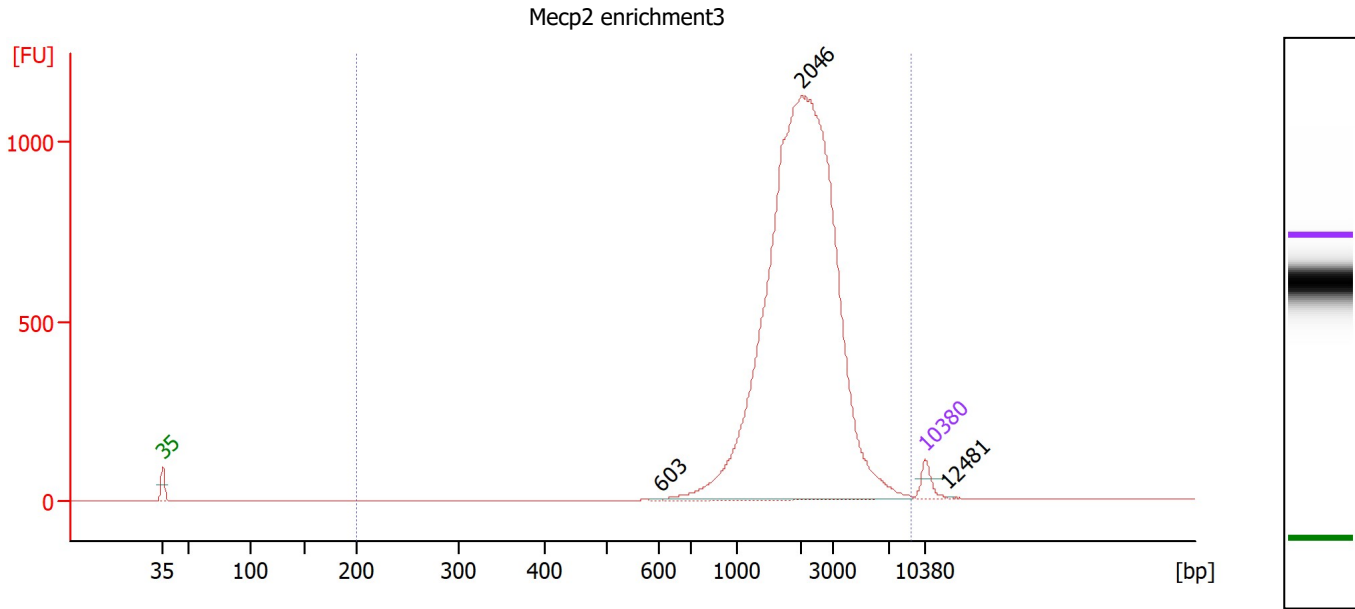
Region table for sample 10 : Mecp2 enrichment2

From [bp]	To [bp]	Corr. Area	% of Total	Average Size [bp]	Size distribution in CV [%]	Conc. [pg/μl]	Molarity [pmol/l]	Color
200	9,000	2,957.5	100	2,708	38.6	2,472.10	1,582.8	Blue

Assay Class: High Sensitivity DNA Assay
 Data Path: Z:\...zer_High Sensitivity DNA Assay_2019-12-12_001_mecp2_p60.xad

Created: 12/12/2019 12:10:11 PM
 Modified: 12/12/2019 4:46:33 PM

Electropherogram Summary Continued ...



Overall Results for sample 11 : Mecp2 enrichment3

Number of peaks found: 3 Corr. Area 1: 8,464.2
 Noise: 0.3

Peak table for sample 11 : Mecp2 enrichment3

Peak	Size [bp]	Conc. [pg/μl]	Molarity [pmol/l]	Observations
1	35	125.00	5,411.3	Lower Marker
2	603	5.72	14.4	
3	2,046	5,973.06	4,422.9	
4	10,380	75.00	10.9	Upper Marker
5	12,481	0.00	0.0	

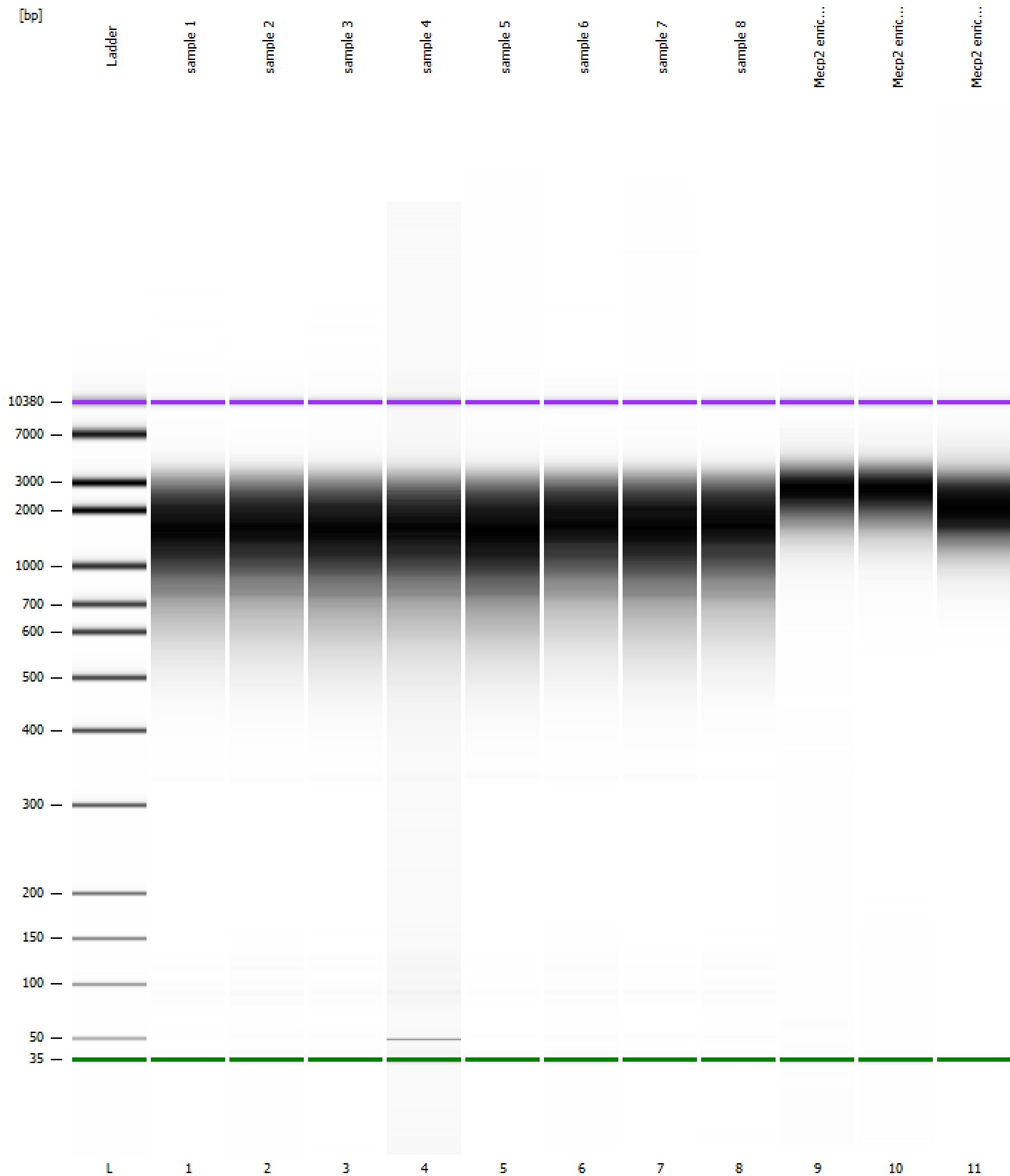
Region table for sample 11 : Mecp2 enrichment3

From [bp]	To [bp]	Corr. Area	% of Total	Average Size [bp]	Size distribution in CV [%]	Conc. [pg/μl]	Molarity [pmol/l]	Color
200	9,000	8,464.2	99	2,304	44.7	6,152.30	4,746.4	Blue

Assay Class: High Sensitivity DNA Assay
Data Path: Z:\...zer_High Sensitivity DNA Assay_2019-12-12_001_mecp2_p60.xad

Created: 12/12/2019 12:10:11 PM
Modified: 12/12/2019 4:46:33 PM

Gel Image

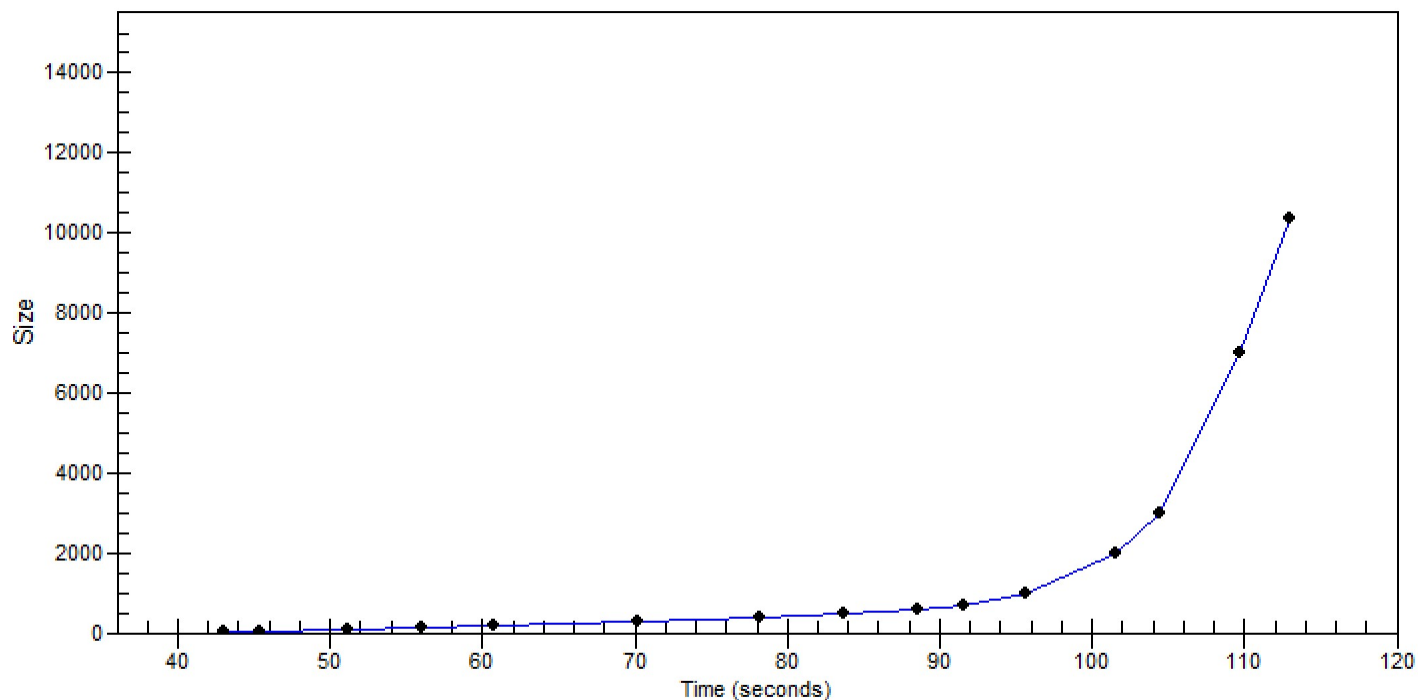


Assay Class: High Sensitivity DNA Assay
Data Path: Z:\...zer_High Sensitivity DNA Assay_2019-12-12_001_mecp2_p60.xad

Created: 12/12/2019 12:10:11 PM
Modified: 12/12/2019 4:46:33 PM

Curves

Standard Curve



Assay Class: High Sensitivity DNA Assay
 Data Path: Z:\...zer_High Sensitivity DNA Assay_2019-12-12_001_mecp2_p60.xad

Created: 12/12/2019 12:10:11 PM
 Modified: 12/12/2019 4:46:33 PM

Run Logbook

Description	Number	Source	Category	Sub Category	Time	Time Zone	User	Host
Run ended on port 1 (Number of wells acquired: 12)		Instrument	Run		12/12/2019 12:51:30 PM	(GMT --08:00) Pacific Standard Time	sbsuser	DESKTOP-4UNV VOB
Run started on port 1 (File: Z:\XADs\2019-12-12\Bioanalyzer_High Sensitivity DNA Assay_2019-12-12_001.xad)		Instrument	Run		12/12/2019 12:10:17 PM	(GMT --08:00) Pacific Standard Time	sbsuser	DESKTOP-4UNV VOB
Product Number : G2938C		Instrument	Run		12/12/2019 12:10:17 PM	(GMT --08:00) Pacific Standard Time	sbsuser	DESKTOP-4UNV VOB
Name :		Instrument	Run		12/12/2019 12:10:17 PM	(GMT --08:00) Pacific Standard Time	sbsuser	DESKTOP-4UNV VOB
Vendor : Agilent Technologies		Instrument	Run		12/12/2019 12:10:17 PM	(GMT --08:00) Pacific Standard Time	sbsuser	DESKTOP-4UNV VOB
Serial# : DE34903152		Instrument	Run		12/12/2019 12:10:17 PM	(GMT --08:00) Pacific Standard Time	sbsuser	DESKTOP-4UNV VOB
Firmware : C.01.069		Instrument	Run		12/12/2019 12:10:17 PM	(GMT --08:00) Pacific Standard Time	sbsuser	DESKTOP-4UNV VOB
Cartridge : Electrode		Instrument	Run		12/12/2019 12:10:17 PM	(GMT --08:00) Pacific Standard Time	sbsuser	DESKTOP-4UNV VOB