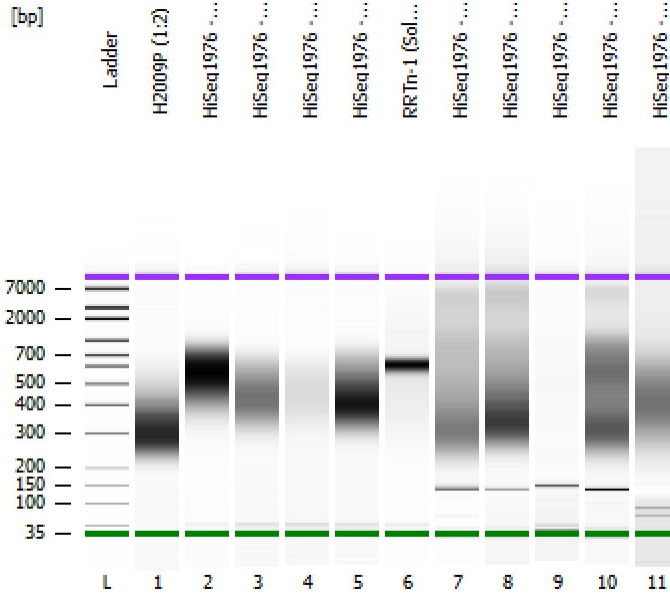


Assay Class: High Sensitivity DNA Assay  
Data Path: Z:\...7\Bioanalyzer\_High Sensitivity DNA Assay\_2019-12-17\_001.xad

Created: 12/17/2019 11:00:13 AM  
Modified: 12/17/2019 11:41:39 AM

Electrophoresis File Run Summary



Instrument Information:

Instrument Name: DE34903152      Firmware: C.01.069  
Serial#: DE34903152      Type: G2938C

Assay Information:

Assay Origin Path: C:\Program Files (x86)\Agilent\2100 bioanalyzer\2100 expert\assays\dsDNA\High Sensitivity DNA.xsy  
Assay Class: High Sensitivity DNA Assay  
Version: 1.03  
Assay Comments: Copyright © 2003-2010 Agilent Technologies

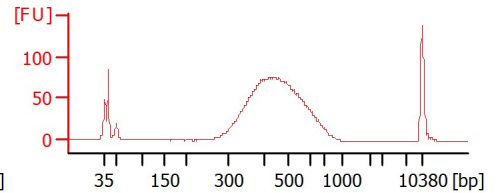
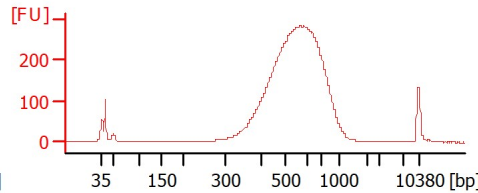
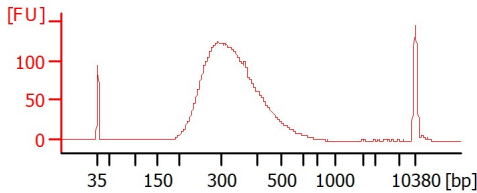
Chip Information:

Chip Lot #:   
Reagent Kit Lot #:   
Chip Comments:

H2009P (1:2)

HiSeq1976 -5 +4 cyc

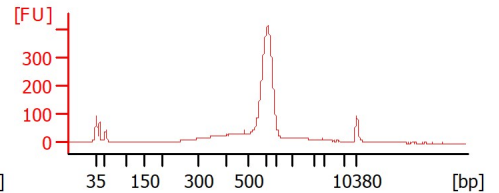
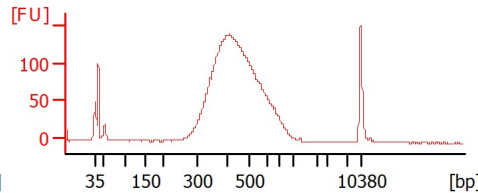
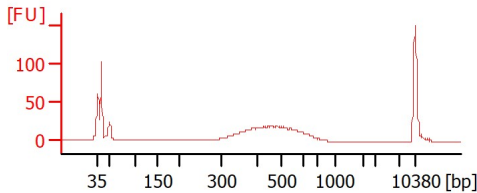
HiSeq1976 -14 +4 cyc



HiSeq1976 -16 +4 cyc

HiSeq1976 -20 +4 cyc

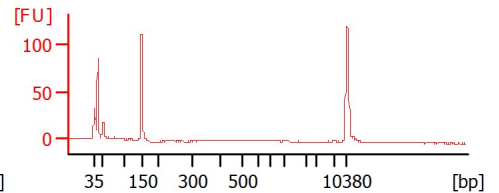
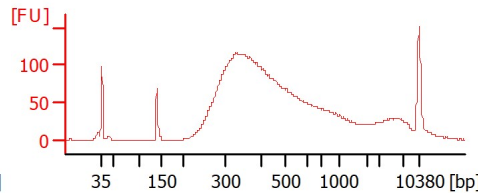
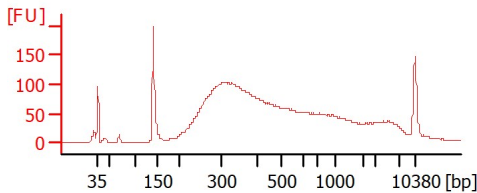
RRTn-1 (SolTagged57) +4 cyc



HiSeq1976 -14 repeat lib

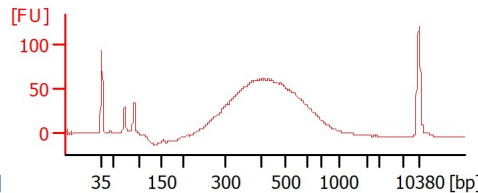
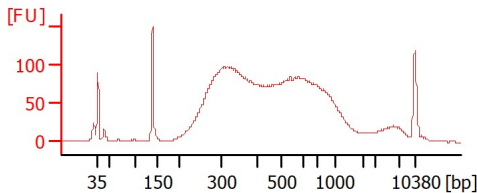
HiSeq1976 -16 repeat lib

HiSeq1976 -19 repeat lib



HiSeq1976 -20 repeat lib

HiSeq1976 -19 repeat lig rxn



Assay Class: High Sensitivity DNA Assay  
 Data Path: Z:\...7\Bioanalyzer\_High Sensitivity DNA Assay\_2019-12-17\_001.xad

Created: 12/17/2019 11:00:13 AM  
 Modified: 12/17/2019 11:41:39 AM

**Electrophoresis File Run Summary (Chip Summary)**

Sample Name	Sample Comment	Rest. Digest	Status	Observation	Result Label	Result Color
H2009P (1:2)		<input type="checkbox"/>	✓			
HiSeq1976 -5 +4 cyc		<input type="checkbox"/>	✓			
HiSeq1976 -14 +4 cyc		<input type="checkbox"/>	✓			
HiSeq1976 -16 +4 cyc		<input type="checkbox"/>	✓			
HiSeq1976 -20 +4 cyc		<input type="checkbox"/>	✓			
RRTn-1 (SolTagged57) +4 cyc		<input type="checkbox"/>	✓			
HiSeq1976 -14 repeat lib		<input type="checkbox"/>	✓			
HiSeq1976 -16 repeat lib		<input type="checkbox"/>	✓			
HiSeq1976 -19 repeat lib		<input type="checkbox"/>	✓			
HiSeq1976 -20 repeat lib		<input type="checkbox"/>	✓			
HiSeq1976 -19 repeat lig rxn		<input type="checkbox"/>	✓			
Ladder		<input type="checkbox"/>	✓			

**Chip Lot #**

**Reagent Kit Lot #**

**Chip Comments :**

Assay Class: High Sensitivity DNA Assay  
 Data Path: Z:\...7\Bioanalyzer\_High Sensitivity DNA Assay\_2019-12-17\_001.xad

Created: 12/17/2019 11:00:13 AM  
 Modified: 12/17/2019 11:41:39 AM

**Electrophoresis Assay Details**

**General Analysis Settings**

Number of Available Sample and Ladder Wells (Max.) : 12  
 Minimum Visible Range [s] : 32  
 Maximum Visible Range [s] : 138  
 Start Analysis Time Range [s] : 33  
 End Analysis Time Range [s] : 137.5  
 Ladder Concentration [pg/μl] : 1950  
 Uses Standard Area for Ladder Fragments  
 Lower Marker Concentration [pg/μl] : 125  
 Upper Marker Concentration [pg/μl] : 75  
 Used Upper Marker for Quantitation  
 Standard Curve Fit is Point to Point  
 Show Data Aligned to Lower and Upper Marker

**Integrator Settings**

Integration Start Time [s] : 33.05  
 Integration End Time [s] : 137  
 Slope Threshold : 0.8  
 Height Threshold [FU] : 5  
 Area Threshold : 0.1  
 Width Threshold [s] : 0.6  
 Baseline Plateau [s] : 0.5

**Filter Settings**

Filter Width [s] : 0.5  
 Polynomial Order : 4

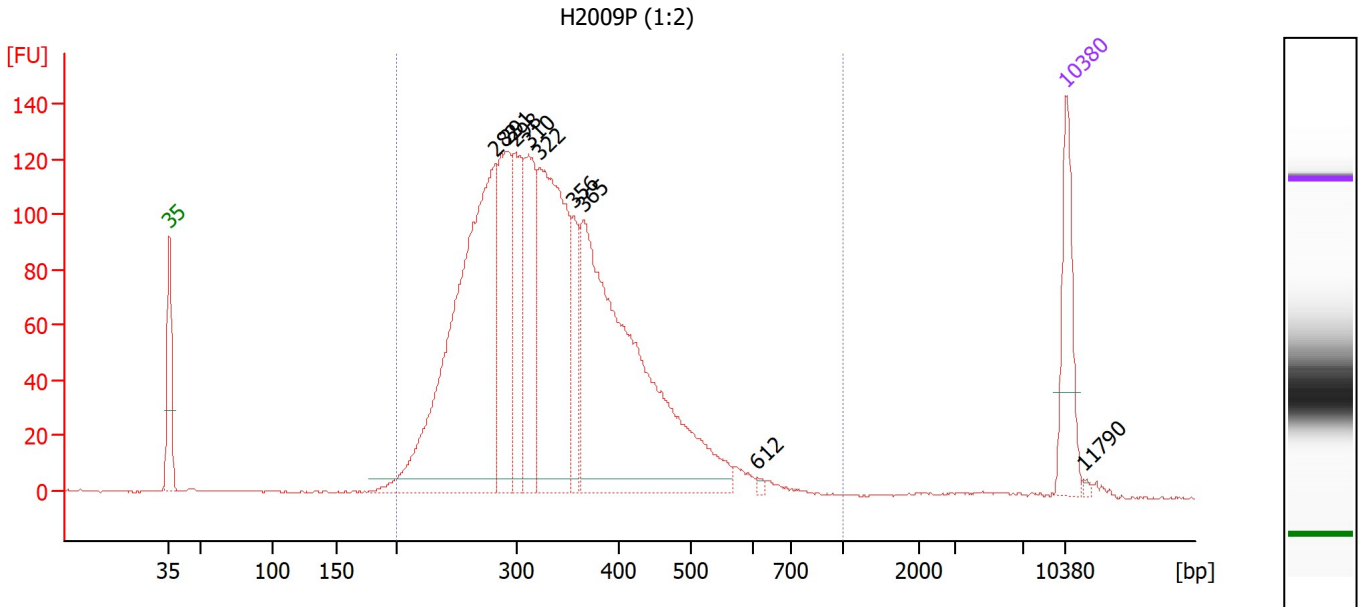
**Ladder**

Ladder Peak	Size	Area
1	35	160
2	50	210
3	100	208
4	150	221
5	200	242
6	300	270
7	400	305
8	500	306
9	600	336
10	700	321
11	1000	366
12	2000	413
13	3000	411
14	7000	400
15	10380	214

Assay Class: High Sensitivity DNA Assay  
 Data Path: Z:\...7\Bioanalyzer\_High Sensitivity DNA Assay\_2019-12-17\_001.xad

Created: 12/17/2019 11:00:13 AM  
 Modified: 12/17/2019 11:41:39 AM

**Electropherogram Summary**



**Overall Results for sample 1 : H2009P (1:2)**

Number of peaks found: 9      Corr. Area 1: 2,556.1  
 Noise: 0.3

**Peak table for sample 1 : H2009P (1:2)**

Peak	Size [bp]	Conc. [pg/μl]	Molarity [pmol/l]	Observations
1	35	125.00	5,411.3	Lower Marker
2	282	679.17	3,653.2	
3	291	211.70	1,103.3	
4	298	157.94	802.3	
5	310	183.13	893.9	
6	322	398.92	1,878.9	
7	356	82.15	350.1	
8	365	641.76	2,664.0	
9	612	3.50	8.7	
10	10,380	75.00	10.9	Upper Marker
11	11,790	0.00	0.0	

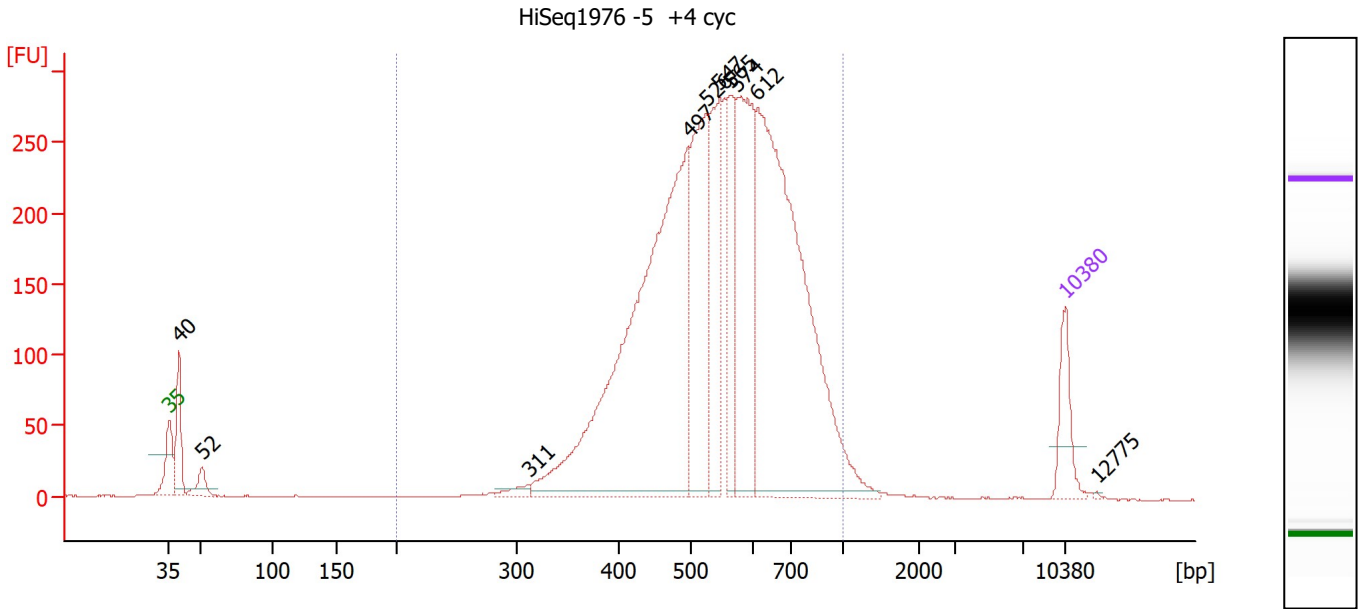
**Region table for sample 1 : H2009P (1:2)**

From [bp]	To [bp]	Corr. Area	% of Total	Average Size [bp]	Size distribution in CV [%]	Conc. [pg/μl]	Molarity [pmol/l]	Color
200	1,000	2,556.1	97	340	24.5	2,391.47	11,408.2	Blue

Assay Class: High Sensitivity DNA Assay  
 Data Path: Z:\...7\Bioanalyzer\_High Sensitivity DNA Assay\_2019-12-17\_001.xad

Created: 12/17/2019 11:00:13 AM  
 Modified: 12/17/2019 11:41:39 AM

**Electropherogram Summary Continued ...**



**Overall Results for sample 2 : HiSeq1976 -5 +4 cyc**

Number of peaks found: 10                      Corr. Area 1: 4,749.6  
 Noise: 0.3

**Peak table for sample 2 : HiSeq1976 -5 +4 cyc**

Peak	Size [bp]	Conc. [pg/μl]	Molarity [pmol/l]	Observations
1	35	125.00	5,411.3	Lower Marker
2	40	143.04	5,449.0	
3	52	49.35	1,451.4	
4	311	21.79	106.2	
5	497	1,343.29	4,096.8	
6	526	417.81	1,202.9	
7	547	259.09	718.2	
8	565	167.95	450.5	
9	574	415.80	1,098.3	
10	612	1,094.66	2,708.6	
11	10,380	75.00	10.9	Upper Marker
12	12,775	0.00	0.0	

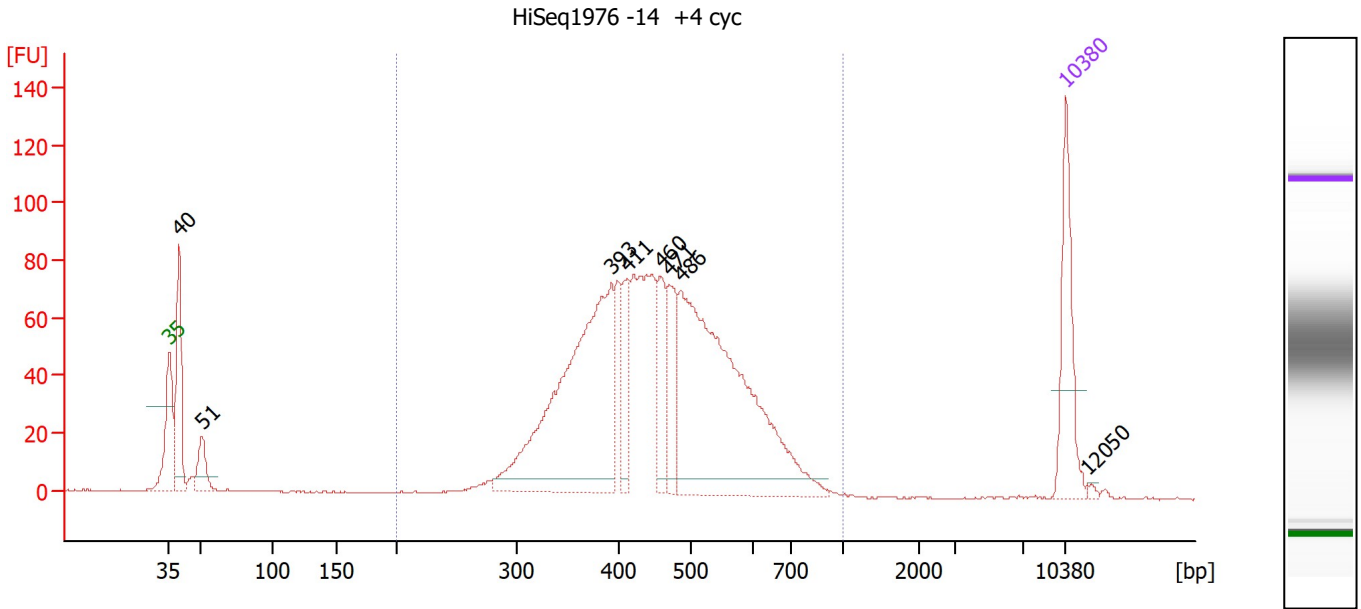
**Region table for sample 2 : HiSeq1976 -5 +4 cyc**

From [bp]	To [bp]	Corr. Area	% of Total	Average Size [bp]	Size distribution in CV [%]	Conc. [pg/μl]	Molarity [pmol/l]	Color
200	1,000	4,749.6	95	562	23.0	3,915.76	11,319.8	Blue

Assay Class: High Sensitivity DNA Assay  
 Data Path: Z:\...7\Bioanalyzer\_High Sensitivity DNA Assay\_2019-12-17\_001.xad

Created: 12/17/2019 11:00:13 AM  
 Modified: 12/17/2019 11:41:39 AM

**Electropherogram Summary Continued ...**



**Overall Results for sample 3 : HiSeq1976 -14 +4 cyc**

Number of peaks found: 8                      Corr. Area 1: 1,475.9  
 Noise: 0.2

**Peak table for sample 3 : HiSeq1976 -14 +4 cyc**

Peak	Size [bp]	Conc. [pg/μl]	Molarity [pmol/l]	Observations
1	35	125.00	5,411.3	Lower Marker
2	40	131.98	5,017.9	
3	51	42.82	1,260.8	
4	393	422.57	1,631.2	
5	411	56.71	209.2	
6	460	67.54	222.6	
7	471	72.73	234.0	
8	486	479.24	1,492.9	
9	10,380	75.00	10.9	Upper Marker
10	12,050	0.00	0.0	

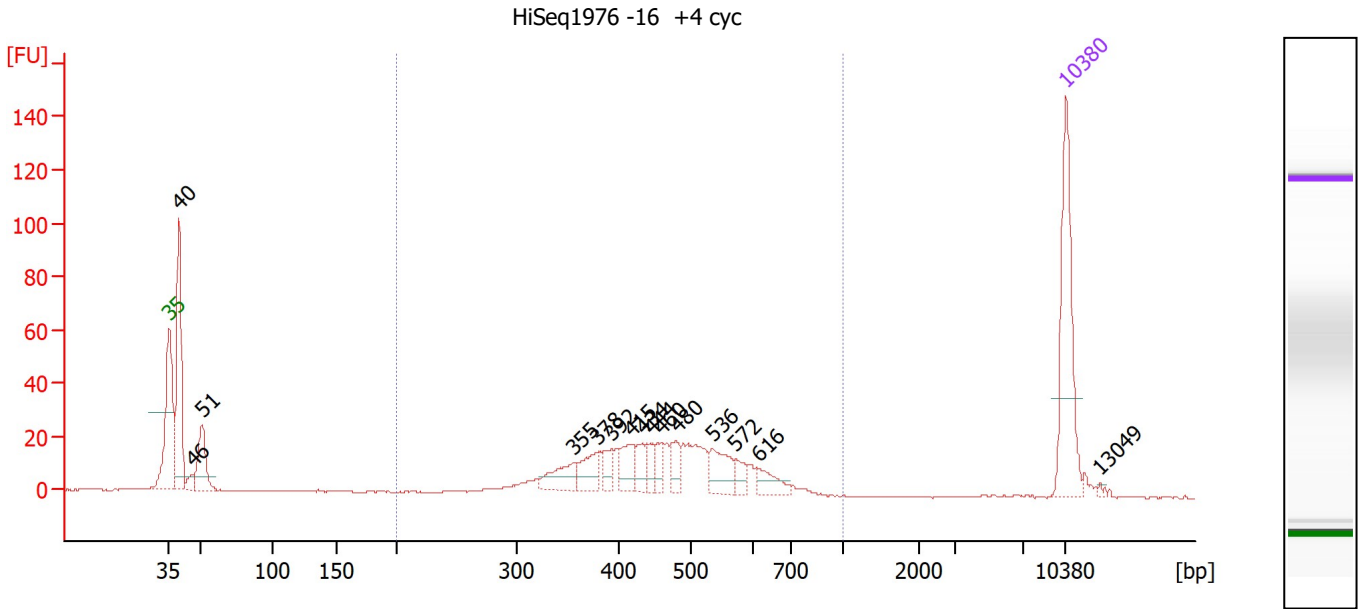
**Region table for sample 3 : HiSeq1976 -14 +4 cyc**

From [bp]	To [bp]	Corr. Area	% of Total	Average Size [bp]	Size distribution in CV [%]	Conc. [pg/μl]	Molarity [pmol/l]	Color
200	1,000	1,475.9	91	459	22.2	1,373.11	4,833.5	Blue

Assay Class: High Sensitivity DNA Assay  
 Data Path: Z:\...7\Bioanalyzer\_High Sensitivity DNA Assay\_2019-12-17\_001.xad

Created: 12/17/2019 11:00:13 AM  
 Modified: 12/17/2019 11:41:39 AM

**Electropherogram Summary Continued ...**



**Overall Results for sample 4 : HiSeq1976 -16 +4 cyc**

Number of peaks found: 15                      Corr. Area 1: 389.2  
 Noise: 0.2

**Peak table for sample 4 : HiSeq1976 -16 +4 cyc**

Peak	Size [bp]	Conc. [pg/μl]	Molarity [pmol/l]	Observations
1	35	125.00	5,411.3	Lower Marker
2	40	137.35	5,211.6	
3	46	8.75	285.6	
4	51	49.15	1,448.5	
5	355	26.60	113.5	
6	378	23.92	95.8	
7	392	13.29	51.4	
8	415	21.78	79.5	
9	434	15.83	55.3	
10	444	12.23	41.7	
11	460	12.23	40.3	
12	480	15.25	48.1	
13	536	28.01	79.2	
14	572	11.34	30.0	
15	616	15.63	38.4	
16	10,380	75.00	10.9	Upper Marker
17	13,049	0.00	0.0	

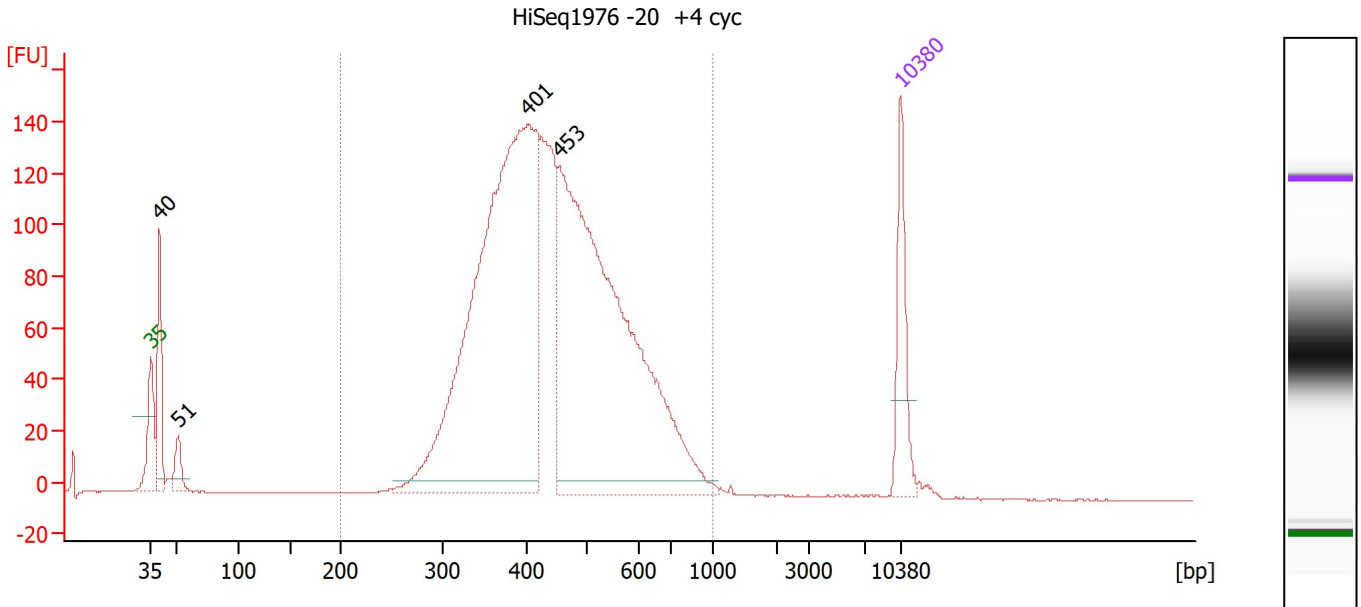
**Region table for sample 4 : HiSeq1976 -16 +4 cyc**

From [bp]	To [bp]	Corr. Area	% of Total	Average Size [bp]	Size distribution in CV [%]	Conc. [pg/μl]	Molarity [pmol/l]	Color
200	1,000	389.2	66	464	22.4	323.47	1,135.9	Blue

Assay Class: High Sensitivity DNA Assay  
 Data Path: Z:\...7\Bioanalyzer\_High Sensitivity DNA Assay\_2019-12-17\_001.xad

Created: 12/17/2019 11:00:13 AM  
 Modified: 12/17/2019 11:41:39 AM

**Electropherogram Summary Continued ...**



**Overall Results for sample 5 : HiSeq1976 -20 +4 cyc**

Number of peaks found: 4                      Corr. Area 1: 2,532.5  
 Noise: 0.2

**Peak table for sample 5 : HiSeq1976 -20 +4 cyc**

Peak	Size [bp]	Conc. [pg/μl]	Molarity [pmol/l]	Observations
1	35	125.00	5,411.3	Lower Marker
2	40	134.14	5,075.4	
3	51	43.16	1,270.3	
4	401	1,055.74	3,993.1	
5	453	953.44	3,186.9	
6	10,380	75.00	10.9	Upper Marker

**Region table for sample 5 : HiSeq1976 -20 +4 cyc**

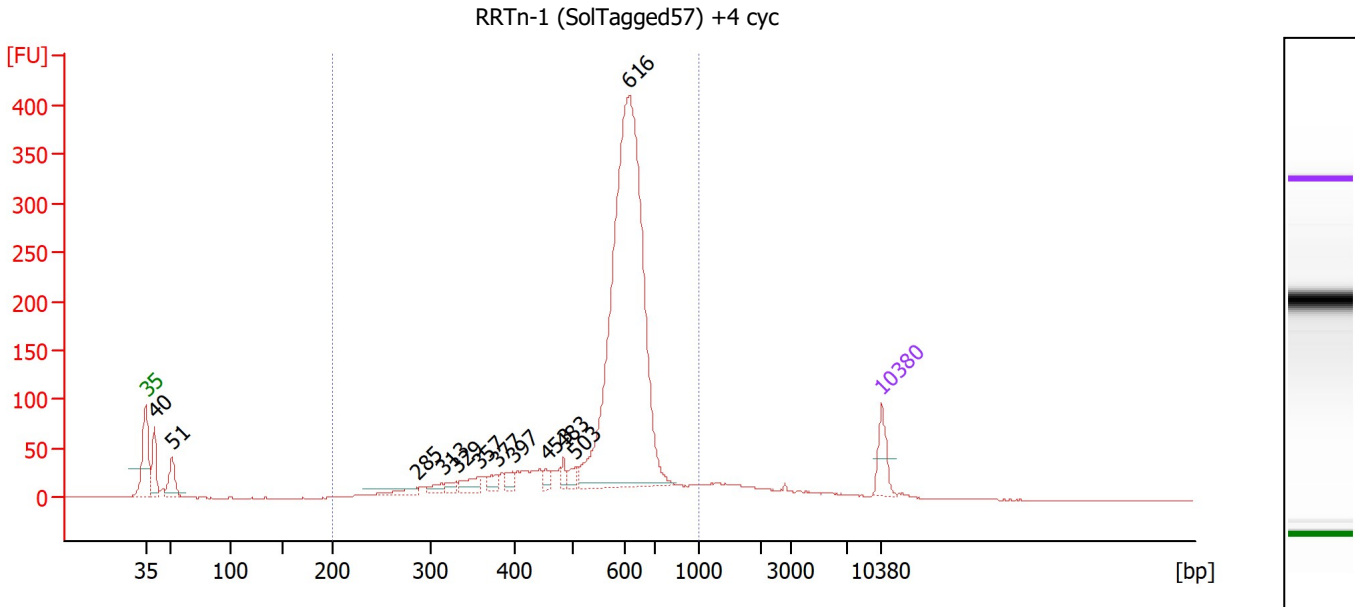
From [bp]	To [bp]	Corr. Area	% of Total	Average Size [bp]	Size distribution in CV [%]	Conc. [pg/μl]	Molarity [pmol/l]	Color
200	1,000	2,532.5	96	454	23.0	2,118.92	7,532.6	Blue



Assay Class: High Sensitivity DNA Assay  
 Data Path: Z:\...7\Bioanalyzer\_High Sensitivity DNA Assay\_2019-12-17\_001.xad

Created: 12/17/2019 11:00:13 AM  
 Modified: 12/17/2019 11:41:39 AM

**Electropherogram Summary Continued ...**



**Overall Results for sample 6 : RRTn-1 (SolTagged57) +4 cyc**

Number of peaks found: 12                      Corr. Area 1: 2,316.7  
 Noise: 0.3

**Peak table for sample 6 : RRTn-1 (SolTagged57) +4 cyc**

Peak	Size [bp]	Conc. [pg/μl]	Molarity [pmol/l]	Observations
1	35	125.00	5,411.3	Lower Marker
2	40	168.38	6,356.6	
3	51	140.30	4,132.7	
4	285	38.64	205.2	
5	313	30.95	149.6	
6	329	26.15	120.3	
7	357	56.85	241.4	
8	377	35.56	142.8	
9	397	32.52	124.1	
10	453	24.20	81.0	
11	483	30.49	95.7	
12	503	30.82	92.8	
13	616	2,084.09	5,129.3	
14	10,380	75.00	10.9	Upper Marker

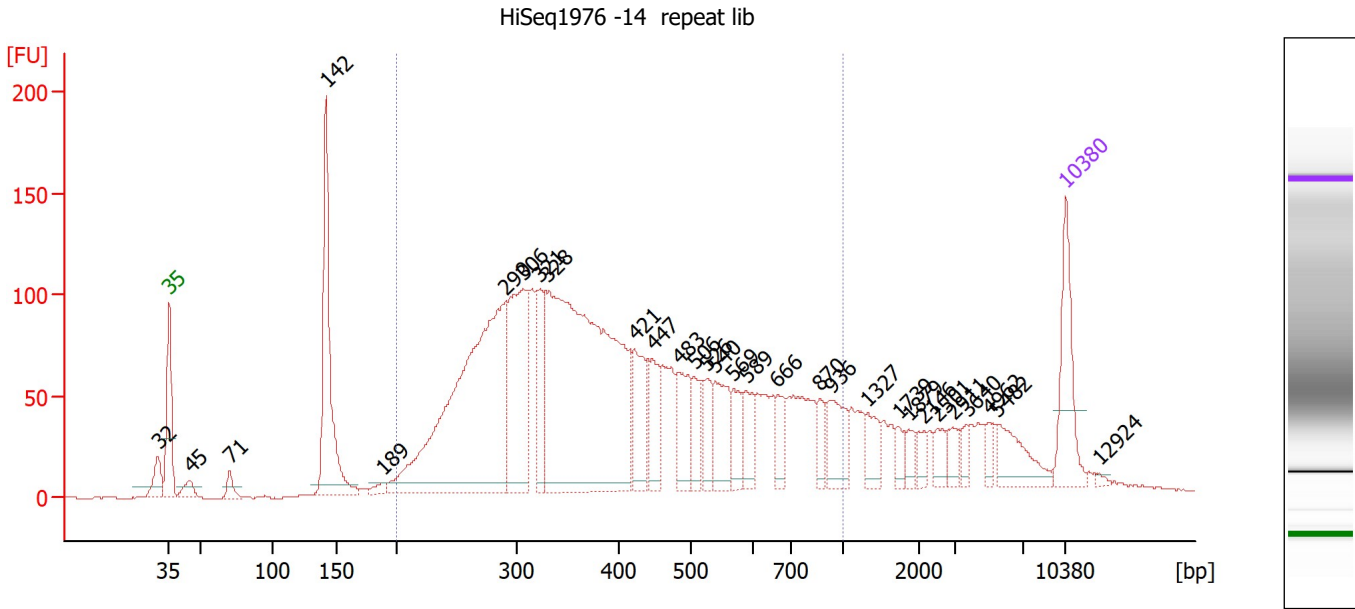
**Region table for sample 6 : RRTn-1 (SolTagged57) +4 cyc**

From [bp]	To [bp]	Corr. Area	% of Total	Average Size [bp]	Size distribution in CV [%]	Conc. [pg/μl]	Molarity [pmol/l]	Color
200	1,000	2,316.7	86	572	20.0	3,141.26	9,100.1	Blue

Assay Class: High Sensitivity DNA Assay  
 Data Path: Z:\...7\Bioanalyzer\_High Sensitivity DNA Assay\_2019-12-17\_001.xad

Created: 12/17/2019 11:00:13 AM  
 Modified: 12/17/2019 11:41:39 AM

**Electropherogram Summary Continued ...**



**Overall Results for sample 7 : HiSeq1976 -14 repeat lib**

Number of peaks found: 30                      Corr. Area 1: 2,988.0  
 Noise: 0.3

**Peak table for sample 7 : HiSeq1976 -14 repeat lib**

Peak	Size [bp]	Conc. [pg/μl]	Molarity [pmol/l]	Observations
1	32	0.00	0.0	
2	35	125.00	5,411.3	Lower Marker
3	45	24.68	826.7	
4	71	19.75	424.0	
5	142	267.34	2,849.6	
6	189	10.68	85.7	
7	290	612.24	3,197.0	
8	306	232.50	1,150.9	
9	321	97.04	458.7	
10	328	739.77	3,413.4	
11	421	80.57	289.8	
12	447	56.86	192.5	
13	483	71.82	225.3	
14	506	41.09	123.0	
15	526	36.47	105.0	
16	540	70.69	198.2	
17	569	37.76	100.5	
18	589	42.98	110.5	
19	666	34.22	77.8	
20	870	23.99	41.8	
21	936	56.31	91.2	
22	1,327	29.88	34.1	
23	1,739	13.14	11.4	
24	1,879	16.07	13.0	
25	2,146	13.52	9.6	
26	2,501	17.54	10.6	

Assay Class: High Sensitivity DNA Assay  
 Data Path: Z:\...7\Bioanalyzer\_High Sensitivity DNA Assay\_2019-12-17\_001.xad

Created: 12/17/2019 11:00:13 AM  
 Modified: 12/17/2019 11:41:39 AM

**Electropherogram Summary Continued ...**

**... Peak table for sample 7 : HiSeq1976 -14 repeat lib**

Peak	Size [bp]	Conc. [pg/μl]	Molarity [pmol/l]	Observations
27	2,911	16.72	8.7	
28	3,640	12.42	5.2	
29	4,962	12.94	4.0	
30	5,482	49.94	13.8	
31	10,380	75.00	10.9	Upper Marker
32	12,924	0.00	0.0	

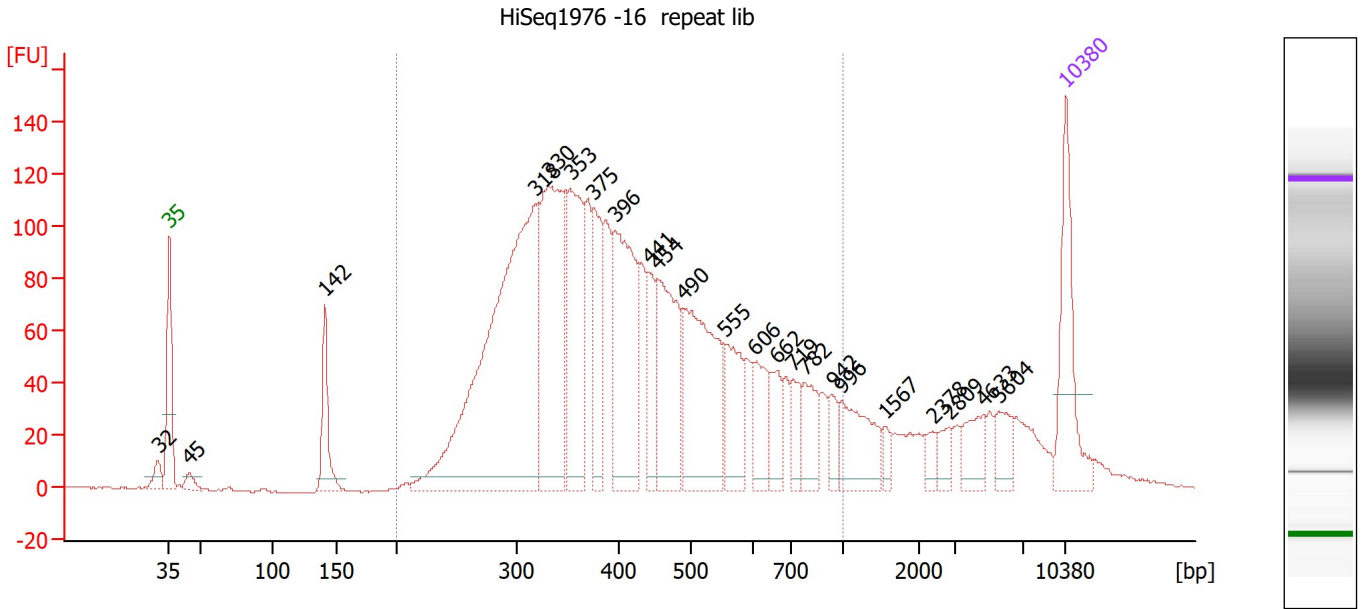
**Region table for sample 7 : HiSeq1976 -14 repeat lib**

From [bp]	To [bp]	Corr. Area	% of Total	Average Size [bp]	Size distribution in CV [%]	Conc. [pg/μl]	Molarity [pmol/l]	Color
200	1,000	2,988.0	76	432	40.0	2,706.11	11,397.2	

Assay Class: High Sensitivity DNA Assay  
 Data Path: Z:\...7\Bioanalyzer\_High Sensitivity DNA Assay\_2019-12-17\_001.xad

Created: 12/17/2019 11:00:13 AM  
 Modified: 12/17/2019 11:41:39 AM

**Electropherogram Summary Continued ...**



**Overall Results for sample 8 : HiSeq1976 -16 repeat lib**

Number of peaks found: 23                      Corr. Area 1: 2,898.1  
 Noise: 0.4

**Peak table for sample 8 : HiSeq1976 -16 repeat lib**

Peak	Size [bp]	Conc. [pg/μl]	Molarity [pmol/l]	Observations
1	32	0.00	0.0	
2	35	125.00	5,411.3	Lower Marker
3	45	12.84	432.4	
4	142	69.52	743.1	
5	318	560.19	2,668.4	
6	330	252.84	1,160.9	
7	353	168.23	723.1	
8	375	88.41	357.2	
9	396	178.65	683.2	
10	441	51.47	176.9	
11	454	137.15	457.7	
12	490	179.09	553.9	
13	555	68.15	185.9	
14	606	45.28	113.1	
15	662	34.11	78.0	
16	719	28.15	59.3	
17	782	40.89	79.3	
18	942	18.59	29.9	
19	996	62.60	95.2	
20	1,567	10.03	9.7	
21	2,378	11.75	7.5	
22	2,809	12.95	7.0	
23	4,633	26.74	8.7	
24	5,604	23.16	6.3	
25	10,380	75.00	10.9	Upper Marker

Assay Class: High Sensitivity DNA Assay  
 Data Path: Z:\...7\Bioanalyzer\_High Sensitivity DNA Assay\_2019-12-17\_001.xad

Created: 12/17/2019 11:00:13 AM  
 Modified: 12/17/2019 11:41:39 AM

**Electropherogram Summary Continued ...**

... Region table for sample 8 :

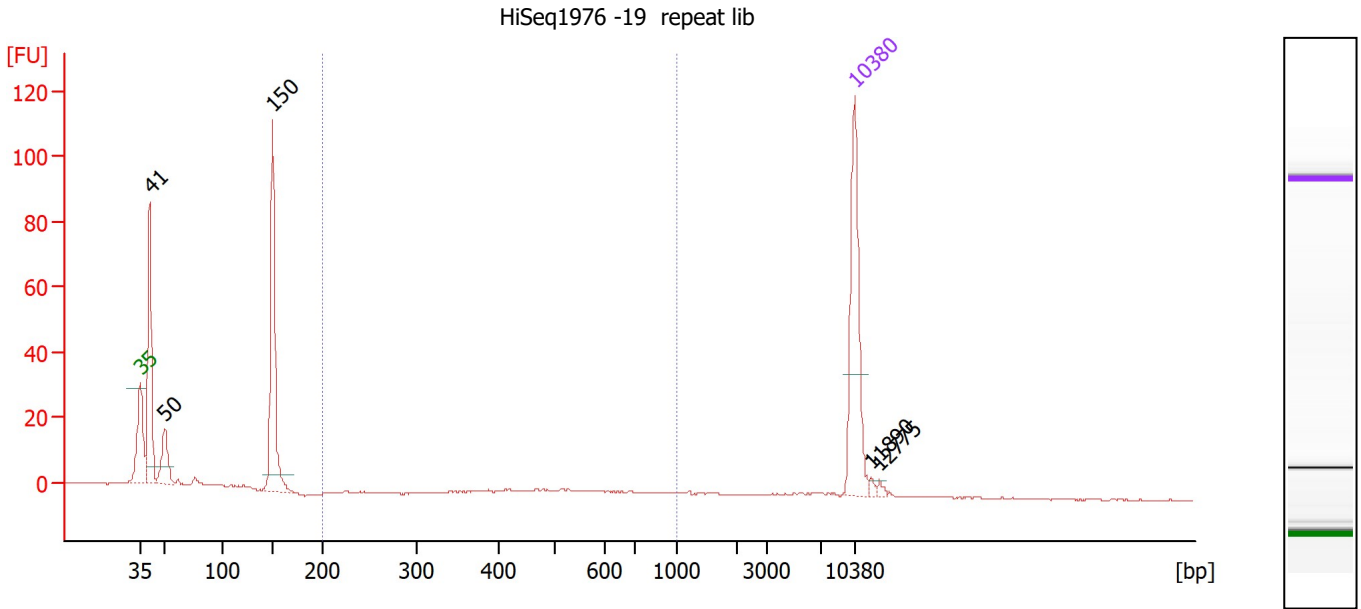
HiSeq1976 -16 repeat lib

From [bp]	To [bp]	Corr. Area	% of Total	Average Size [bp]	Size distribution in CV [%]	Conc. [pg/μl]	Molarity [pmol/l]	Color
200	1,000	2,898.1	83	438	35.5	2,184.08	8,692.7	■

Assay Class: High Sensitivity DNA Assay  
 Data Path: Z:\...7\Bioanalyzer\_High Sensitivity DNA Assay\_2019-12-17\_001.xad

Created: 12/17/2019 11:00:13 AM  
 Modified: 12/17/2019 11:41:39 AM

**Electropherogram Summary Continued ...**



**Overall Results for sample 9 : HiSeq1976 -19 repeat lib**

Number of peaks found: 5                      Corr. Area 1: 2.5  
 Noise: 0.2

**Peak table for sample 9 : HiSeq1976 -19 repeat lib**

Peak	Size [bp]	Conc. [pg/μl]	Molarity [pmol/l]	Observations
1	35	125.00	5,411.3	Lower Marker
2	41	136.91	5,065.2	
3	50	42.48	1,279.7	
4	150	149.63	1,511.2	
5	10,380	75.00	10.9	Upper Marker
6	11,890	0.00	0.0	
7	12,775	0.00	0.0	

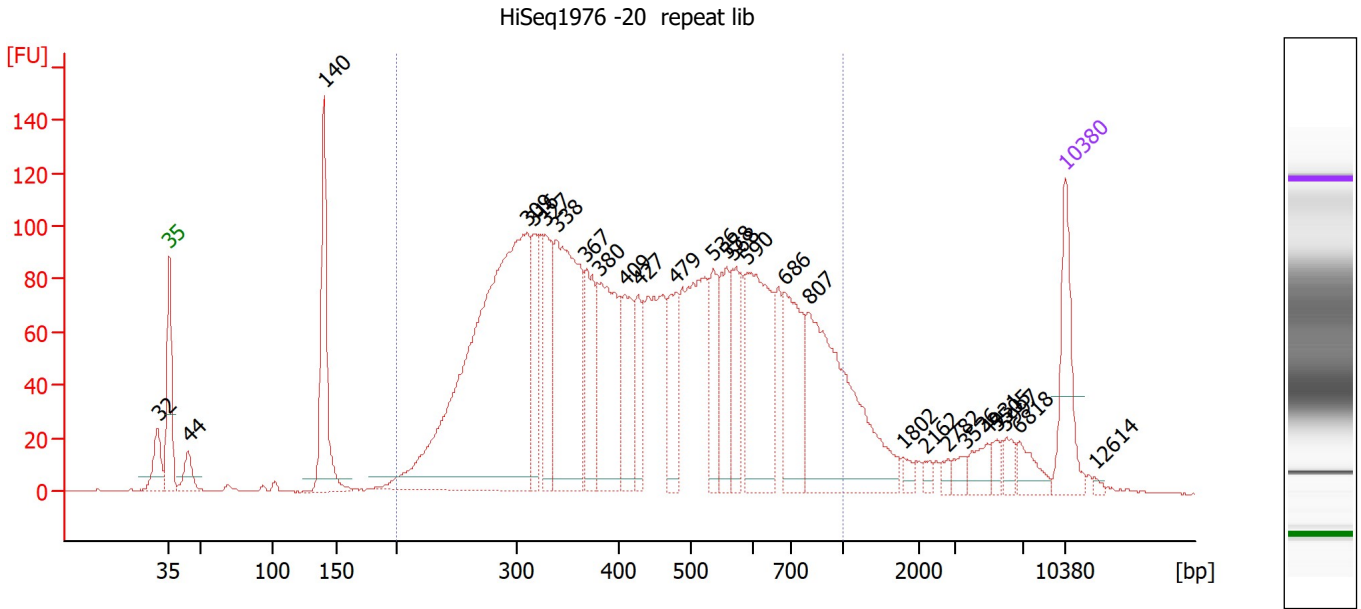
**Region table for sample 9 : HiSeq1976 -19 repeat lib**

From [bp]	To [bp]	Corr. Area	% of Total	Average Size [bp]	Size distribution in CV [%]	Conc. [pg/μl]	Molarity [pmol/l]	Color
200	1,000	2.5	1	536	14.0	2.48	7.1	Blue

Assay Class: High Sensitivity DNA Assay  
 Data Path: Z:\...7\Bioanalyzer\_High Sensitivity DNA Assay\_2019-12-17\_001.xad

Created: 12/17/2019 11:00:13 AM  
 Modified: 12/17/2019 11:41:39 AM

**Electropherogram Summary Continued ...**



**Overall Results for sample 10 : HiSeq1976 -20 repeat lib**

Number of peaks found: 27                      Corr. Area 1: 3,127.9  
 Noise: 0.2

**Peak table for sample 10 : HiSeq1976 -20 repeat lib**

Peak	Size [bp]	Conc. [pg/μl]	Molarity [pmol/l]	Observations
1	32	0.00	0.0	
2	35	125.00	5,411.3	Lower Marker
3	44	39.41	1,353.5	
4	140	203.37	2,196.5	
5	309	836.57	4,108.3	
6	316	105.10	504.1	
7	327	109.01	504.6	
8	338	312.78	1,401.8	
9	367	114.56	473.0	
10	380	181.57	724.5	
11	409	95.60	353.8	
12	427	64.13	227.7	
13	479	82.62	261.2	
14	536	65.14	184.0	
15	558	87.76	238.2	
16	568	77.57	206.8	
17	590	192.68	494.7	
18	686	128.25	283.4	
19	807	290.82	545.8	
20	1,802	9.26	7.8	
21	2,162	7.07	5.0	
22	2,782	6.25	3.4	
23	3,536	11.90	5.1	
24	4,931	21.76	6.7	
25	5,505	11.25	3.1	
26	5,997	15.41	3.9	

Assay Class: High Sensitivity DNA Assay  
 Data Path: Z:\...7\Bioanalyzer\_High Sensitivity DNA Assay\_2019-12-17\_001.xad

Created: 12/17/2019 11:00:13 AM  
 Modified: 12/17/2019 11:41:39 AM

**Electropherogram Summary Continued ...**

**... Peak table for sample 10 : HiSeq1976 -20 repeat lib**

Peak	Size [bp]	Conc. [pg/μl]	Molarity [pmol/l]	Observations
27	6,818	24.76	5.5	
28	10,380	75.00	10.9	Upper Marker
29	12,614	0.00	0.0	

**Region table for sample 10 : HiSeq1976 -20 repeat lib**

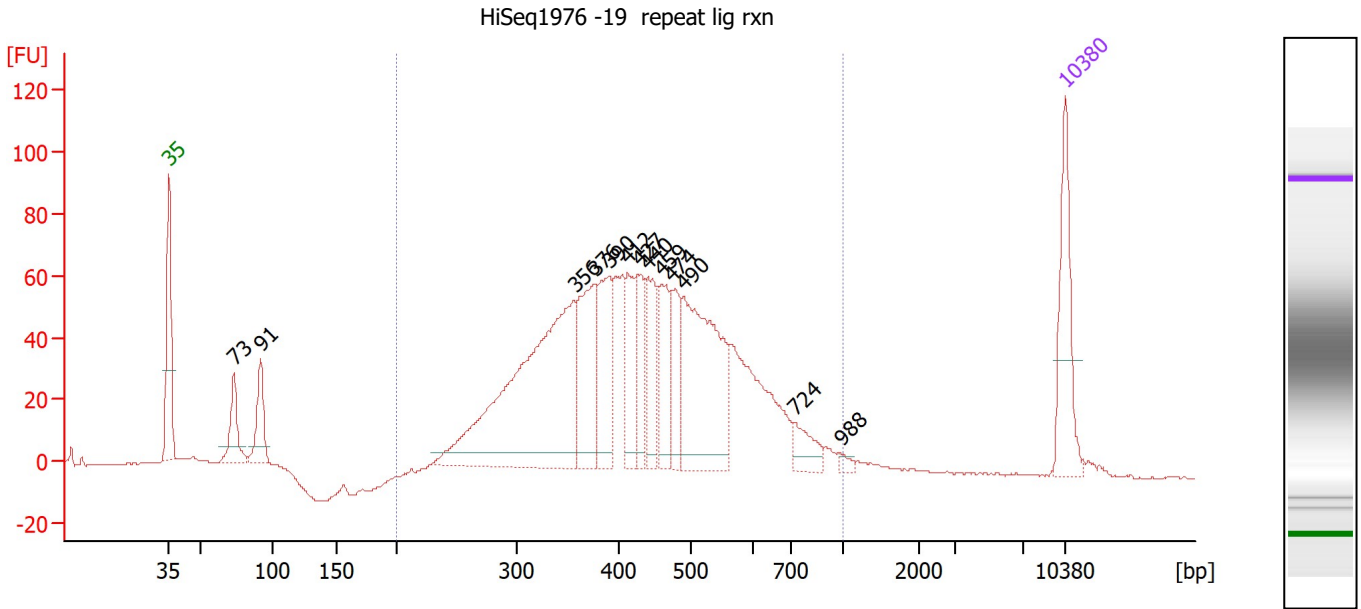
From [bp]	To [bp]	Corr. Area	% of Total	Average Size [bp]	Size distribution in CV [%]	Conc. [pg/μl]	Molarity [pmol/l]	Color
200	1,000	3,127.9	84	464	38.1	3,252.84	12,793.7	Blue



Assay Class: High Sensitivity DNA Assay  
 Data Path: Z:\...7\Bioanalyzer\_High Sensitivity DNA Assay\_2019-12-17\_001.xad

Created: 12/17/2019 11:00:13 AM  
 Modified: 12/17/2019 11:41:39 AM

**Electropherogram Summary Continued ...**



**Overall Results for sample 11 : HiSeq1976 -19 repeat lig rxn**

Number of peaks found: 13                      Corr. Area 1: 1,350.4  
 Noise: 0.2

**Peak table for sample 11 : HiSeq1976 -19 repeat lig rxn**

Peak	Size [bp]	Conc. [pg/μl]	Molarity [pmol/l]	Observations
1	35	125.00	5,411.3	Lower Marker
2	73	56.69	1,175.5	
3	91	63.52	1,053.2	
4	356	429.97	1,830.0	
5	376	129.42	520.9	
6	390	93.51	363.2	
7	412	66.16	243.3	
8	427	56.89	202.1	
9	440	67.50	232.4	
10	459	68.63	226.8	
11	474	54.39	173.8	
12	490	223.31	691.1	
13	724	29.71	62.2	
14	988	5.33	8.2	
15	10,380	75.00	10.9	Upper Marker

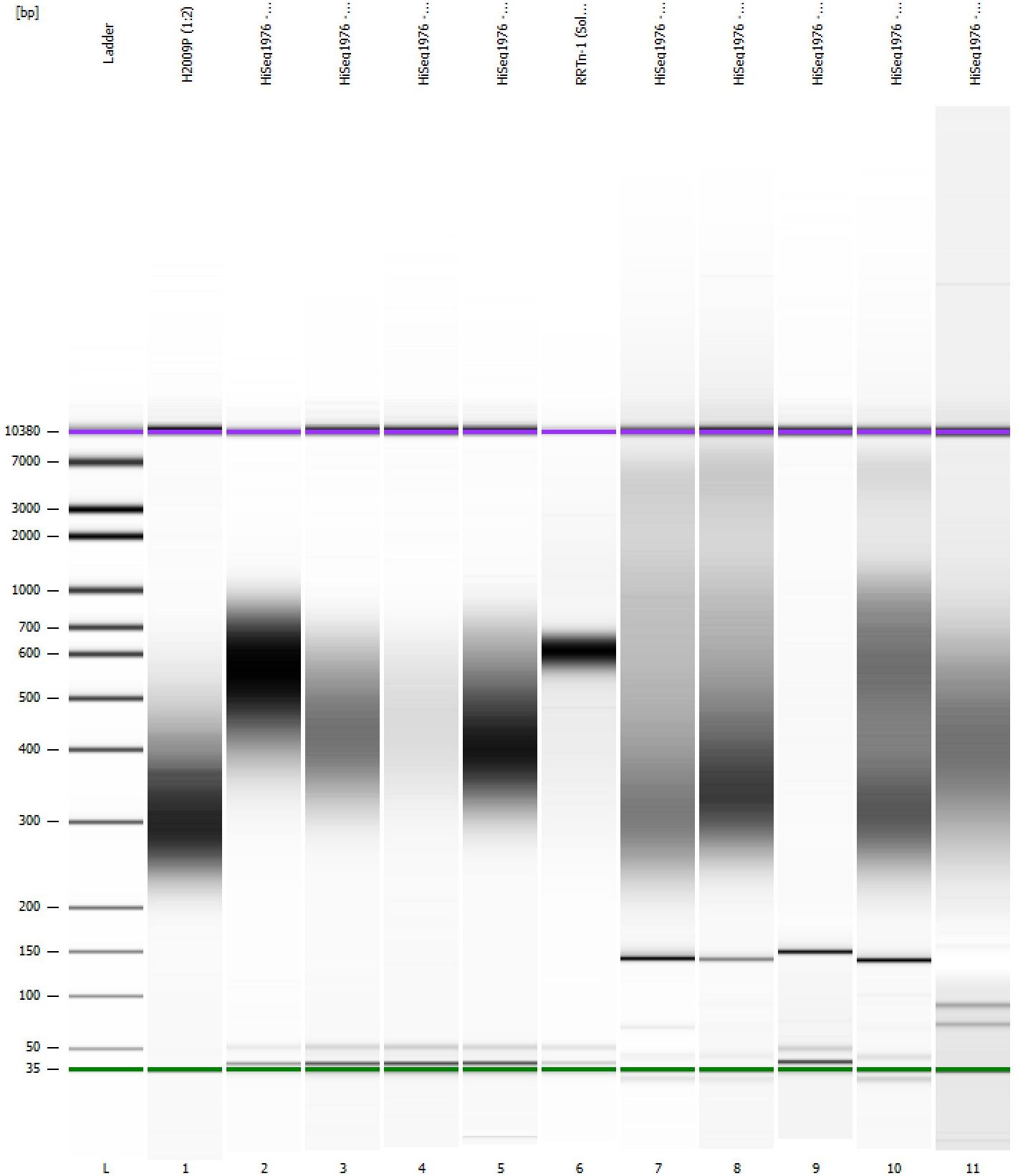
**Region table for sample 11 : HiSeq1976 -19 repeat lig rxn**

From [bp]	To [bp]	Corr. Area	% of Total	Average Size [bp]	Size distribution in CV [%]	Conc. [pg/μl]	Molarity [pmol/l]	Color
200	1,000	1,350.4	95	445	26.9	1,424.36	5,319.4	Blue

Assay Class: High Sensitivity DNA Assay  
Data Path: Z:\...7\Bioanalyzer\_High Sensitivity DNA Assay\_2019-12-17\_001.xad

Created: 12/17/2019 11:00:13 AM  
Modified: 12/17/2019 11:41:39 AM

Gel Image

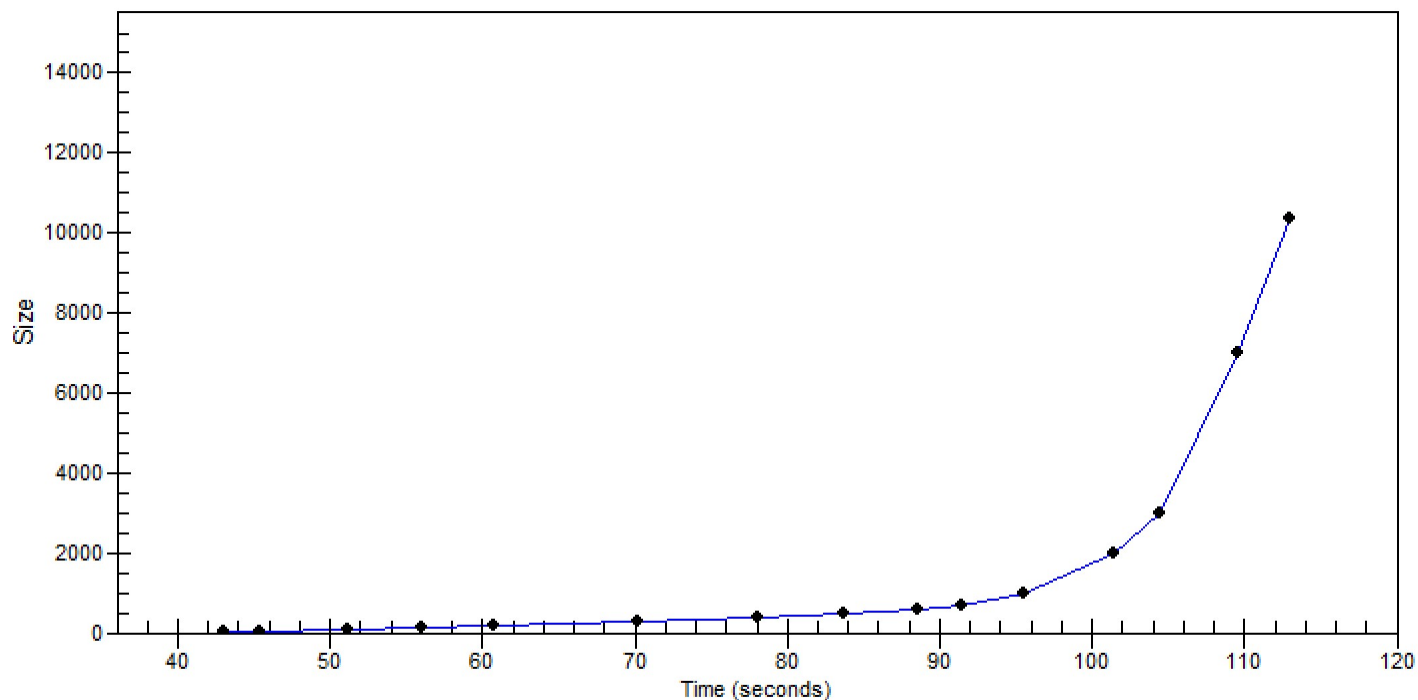


Assay Class: High Sensitivity DNA Assay  
Data Path: Z:\...7\Bioanalyzer\_High Sensitivity DNA Assay\_2019-12-17\_001.xad

Created: 12/17/2019 11:00:13 AM  
Modified: 12/17/2019 11:41:39 AM

**Curves**

**Standard Curve**



Assay Class: High Sensitivity DNA Assay  
 Data Path: Z:\...7\Bioanalyzer\_High Sensitivity DNA Assay\_2019-12-17\_001.xad

Created: 12/17/2019 11:00:13 AM  
 Modified: 12/17/2019 11:41:39 AM

**Run Logbook**

Description	Number	Source	Category	Sub Category	Time	Time Zone	User	Host
Run ended on port 1 (Number of wells acquired: 12)		Instrument	Run		12/17/2019 11:41:36 AM	(GMT --08:00) Pacific Standard Time	sbsuser	DESKTOP-4UNV VOB
Run started on port 1 (File: Z:\XADs\2019-12-17\Bioanalyzer_High Sensitivity DNA Assay_2019-12-17_001.xad)		Instrument	Run		12/17/2019 11:00:19 AM	(GMT --08:00) Pacific Standard Time	sbsuser	DESKTOP-4UNV VOB
Product Number : G2938C		Instrument	Run		12/17/2019 11:00:19 AM	(GMT --08:00) Pacific Standard Time	sbsuser	DESKTOP-4UNV VOB
Name :		Instrument	Run		12/17/2019 11:00:19 AM	(GMT --08:00) Pacific Standard Time	sbsuser	DESKTOP-4UNV VOB
Vendor : Agilent Technologies		Instrument	Run		12/17/2019 11:00:19 AM	(GMT --08:00) Pacific Standard Time	sbsuser	DESKTOP-4UNV VOB
Serial# : DE34903152		Instrument	Run		12/17/2019 11:00:19 AM	(GMT --08:00) Pacific Standard Time	sbsuser	DESKTOP-4UNV VOB
Firmware : C.01.069		Instrument	Run		12/17/2019 11:00:19 AM	(GMT --08:00) Pacific Standard Time	sbsuser	DESKTOP-4UNV VOB
Cartridge : Electrode		Instrument	Run		12/17/2019 11:00:19 AM	(GMT --08:00) Pacific Standard Time	sbsuser	DESKTOP-4UNV VOB