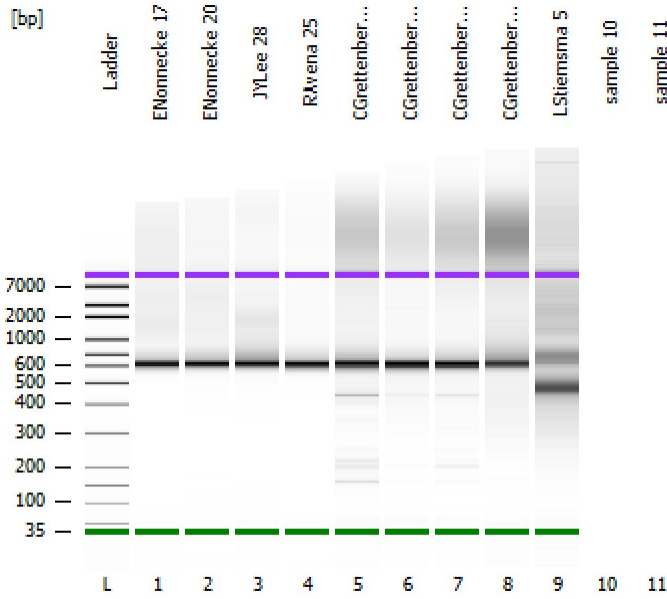


Assay Class: High Sensitivity DNA Assay
Data Path: Z:\...\Bioanalyzer1_High Sensitivity DNA Assay_2019-12-23_001.xad

Created: 12/23/2019 12:41:59 PM
Modified: 12/23/2019 1:17:37 PM

Electrophoresis File Run Summary



Instrument Information:

Instrument Name: DE34903152 Firmware: C.01.069
Serial#: DE34903152 Type: G2938C

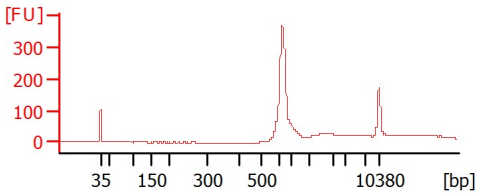
Assay Information:

Assay Origin Path: C:\Program Files (x86)\Agilent\2100 bioanalyzer\2100 expert\assays\dsDNA\High Sensitivity DNA.xsy
Assay Class: High Sensitivity DNA Assay
Version: 1.03
Assay Comments: Copyright © 2003-2010 Agilent Technologies

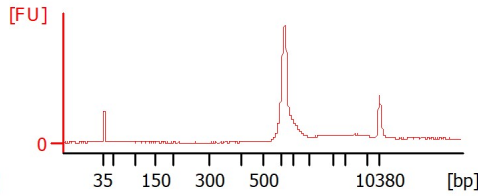
Chip Information:

Chip Lot #:
Reagent Kit Lot #:
Chip Comments:

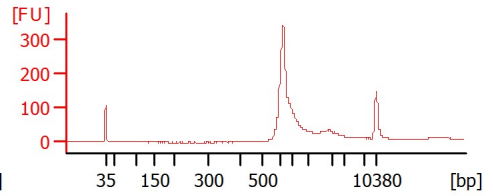
ENonnecke 17



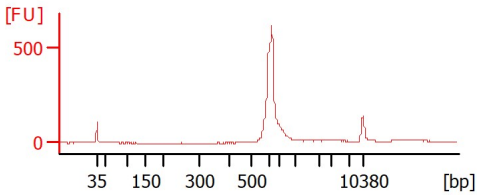
ENonnecke 20



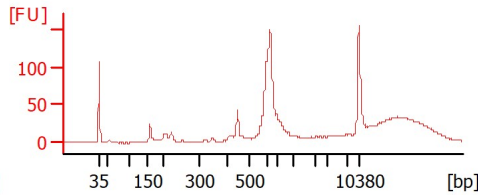
JYLee 28



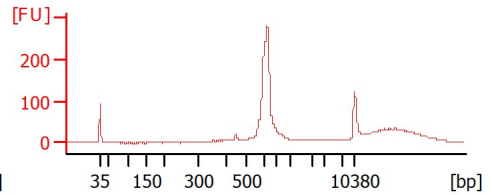
RAvena 25



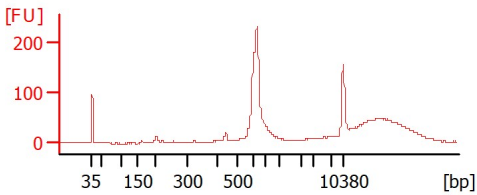
CGrettenberger 1-40



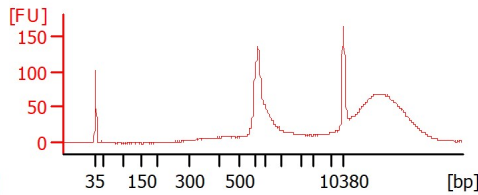
CGrettenberger 41-72



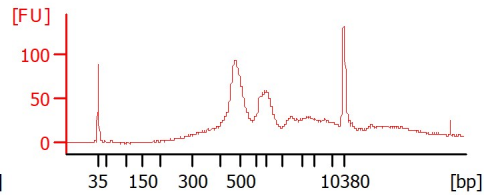
CGrettenberger 73-107



CGrettenberger 108-117



LStiemsma 5



Assay Class: High Sensitivity DNA Assay
 Data Path: Z:\...\Bioanalyzer1_High Sensitivity DNA Assay_2019-12-23_001.xad

Created: 12/23/2019 12:41:59 PM
 Modified: 12/23/2019 1:17:37 PM

Electrophoresis File Run Summary (Chip Summary)

Sample Name	Sample Comment	Rest. Digest	Status	Observation	Result Label	Result Color
ENonnecke 17		<input type="checkbox"/>	✓			
ENonnecke 20		<input type="checkbox"/>	✓			
JYLee 28		<input type="checkbox"/>	✓			
RAvena 25		<input type="checkbox"/>	✓			
CGrettenberger 1-40		<input type="checkbox"/>	✓			
CGrettenberger 41-72		<input type="checkbox"/>	✓			
CGrettenberger 73-107		<input type="checkbox"/>	✓			
CGrettenberger 108-117		<input type="checkbox"/>	✓			
LStiemsma 5		<input type="checkbox"/>	✓			
sample 10		<input type="checkbox"/>				
sample 11		<input type="checkbox"/>				
Ladder		<input type="checkbox"/>	✓			

Chip Lot #

Reagent Kit Lot #

Chip Comments :

Assay Class: High Sensitivity DNA Assay
 Data Path: Z:\...\Bioanalyzer1_High Sensitivity DNA Assay_2019-12-23_001.xad

Created: 12/23/2019 12:41:59 PM
 Modified: 12/23/2019 1:17:37 PM

Electrophoresis Assay Details

General Analysis Settings

Number of Available Sample and Ladder Wells (Max.) : 12
 Minimum Visible Range [s] : 32
 Maximum Visible Range [s] : 138
 Start Analysis Time Range [s] : 33
 End Analysis Time Range [s] : 137.5
 Ladder Concentration [pg/μl] : 1950
 Uses Standard Area for Ladder Fragments
 Lower Marker Concentration [pg/μl] : 125
 Upper Marker Concentration [pg/μl] : 75
 Used Upper Marker for Quantitation
 Standard Curve Fit is Point to Point
 Show Data Aligned to Lower and Upper Marker

Integrator Settings

Integration Start Time [s] : 33.05
 Integration End Time [s] : 137
 Slope Threshold : 0.8
 Height Threshold [FU] : 5
 Area Threshold : 0.1
 Width Threshold [s] : 0.6
 Baseline Plateau [s] : 0.5

Filter Settings

Filter Width [s] : 0.5
 Polynomial Order : 4

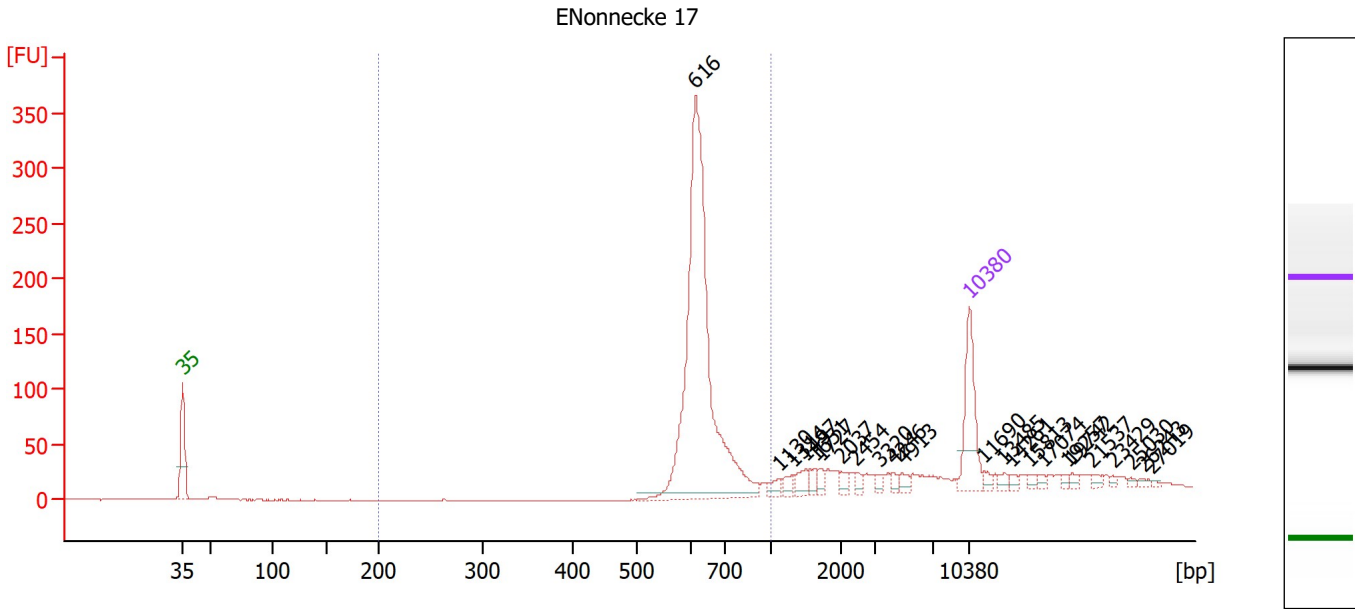
Ladder

Ladder Peak	Size	Area
1	35	160
2	50	210
3	100	208
4	150	221
5	200	242
6	300	270
7	400	305
8	500	306
9	600	336
10	700	321
11	1000	366
12	2000	413
13	3000	411
14	7000	400
15	10380	214

Assay Class: High Sensitivity DNA Assay
 Data Path: Z:\...\Bioanalyzer1_High Sensitivity DNA Assay_2019-12-23_001.xad

Created: 12/23/2019 12:41:59 PM
 Modified: 12/23/2019 1:17:37 PM

Electropherogram Summary



Overall Results for sample 1 : ENonnecke 17

Number of peaks found: 23 Corr. Area 1: 876.4
 Noise: 0.2

Peak table for sample 1 : ENonnecke 17

Peak	Size [bp]	Conc. [pg/μl]	Molarity [pmol/l]	Observations
1	35	125.00	5,411.3	Lower Marker
2	616	602.82	1,483.8	
3	1,130	10.74	14.4	
4	1,314	9.91	11.4	
5	1,497	15.42	15.6	
6	1,651	9.86	9.1	
7	1,727	7.92	6.9	
8	2,037	7.96	5.9	
9	2,454	7.82	4.8	
10	3,320	6.33	2.9	
11	4,246	5.81	2.1	
12	4,913	8.34	2.6	
13	10,380	75.00	10.9	Upper Marker
14	11,690	0.00	0.0	
15	13,485	0.00	0.0	
16	14,261	0.00	0.0	
17	15,813	0.00	0.0	
18	17,074	0.00	0.0	
19	19,257	0.00	0.0	
20	19,742	0.00	0.0	
21	21,537	0.00	0.0	
22	23,429	0.00	0.0	
23	25,030	0.00	0.0	
24	26,243	0.00	0.0	
25	27,019	0.00	0.0	

Assay Class: High Sensitivity DNA Assay
 Data Path: Z:\...\Bioanalyzer1_High Sensitivity DNA Assay_2019-12-23_001.xad

Created: 12/23/2019 12:41:59 PM
 Modified: 12/23/2019 1:17:37 PM

Electropherogram Summary Continued ...

... Region table for sample 1 :

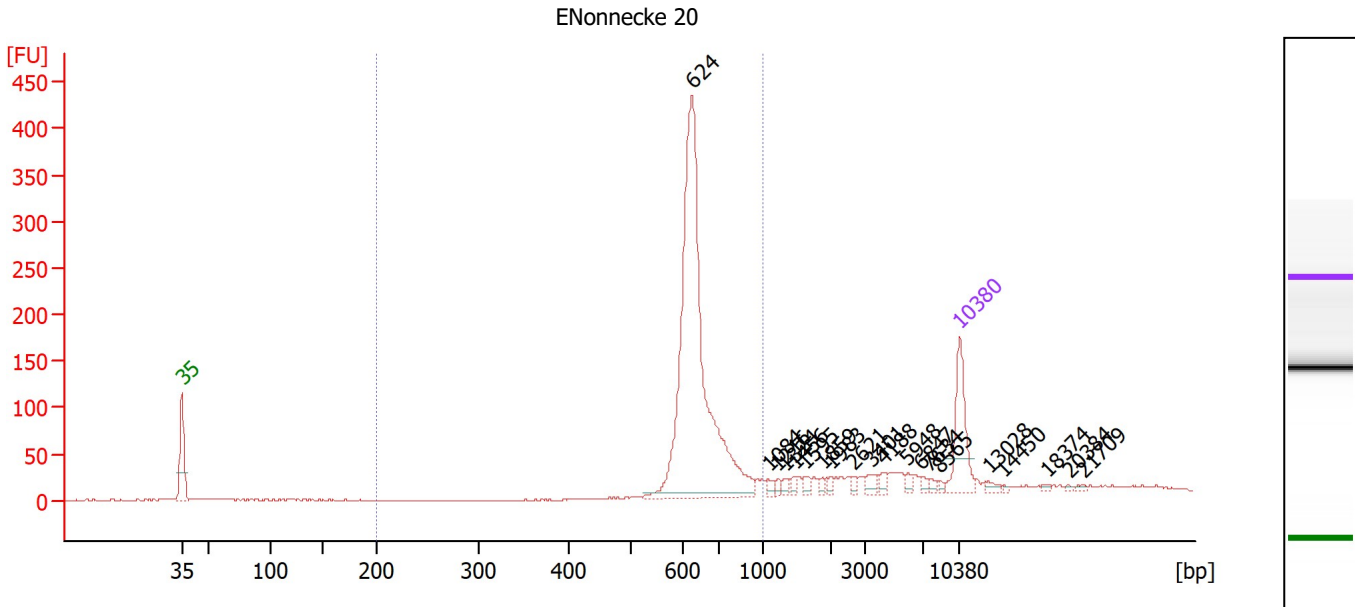
ENonnecke 17

From [bp]	To [bp]	Corr. Area	% of Total	Average Size [bp]	Size distribution in CV [%]	Conc. [pg/μl]	Molarity [pmol/l]	Color
200	1,000	876.4	70	638	9.5	565.20	1,350.8	■

Assay Class: High Sensitivity DNA Assay
 Data Path: Z:\...\Bioanalyzer1_High Sensitivity DNA Assay_2019-12-23_001.xad

Created: 12/23/2019 12:41:59 PM
 Modified: 12/23/2019 1:17:37 PM

Electropherogram Summary Continued ...



Overall Results for sample 2 : ENonnecke 20

Number of peaks found: 20 Corr. Area 1: 1,099.4
 Noise: 0.7

Peak table for sample 2 : ENonnecke 20

Peak	Size [bp]	Conc. [pg/μl]	Molarity [pmol/l]	Observations
1	35	125.00	5,411.3	Lower Marker
2	624	706.24	1,714.7	
3	1,084	7.82	10.9	
4	1,216	6.23	7.8	
5	1,324	6.96	8.0	
6	1,456	7.35	7.6	
7	1,595	7.96	7.6	
8	1,859	5.87	4.8	
9	1,983	5.86	4.5	
10	2,621	5.91	3.4	
11	3,401	11.08	4.9	
12	4,188	7.72	2.8	
13	5,948	6.85	1.7	
14	6,847	5.88	1.3	
15	7,634	5.14	1.0	
16	8,565	3.47	0.6	
17	10,380	75.00	10.9	Upper Marker
18	13,028	0.00	0.0	
19	14,450	0.00	0.0	
20	18,374	0.00	0.0	
21	20,384	0.00	0.0	
22	21,709	0.00	0.0	

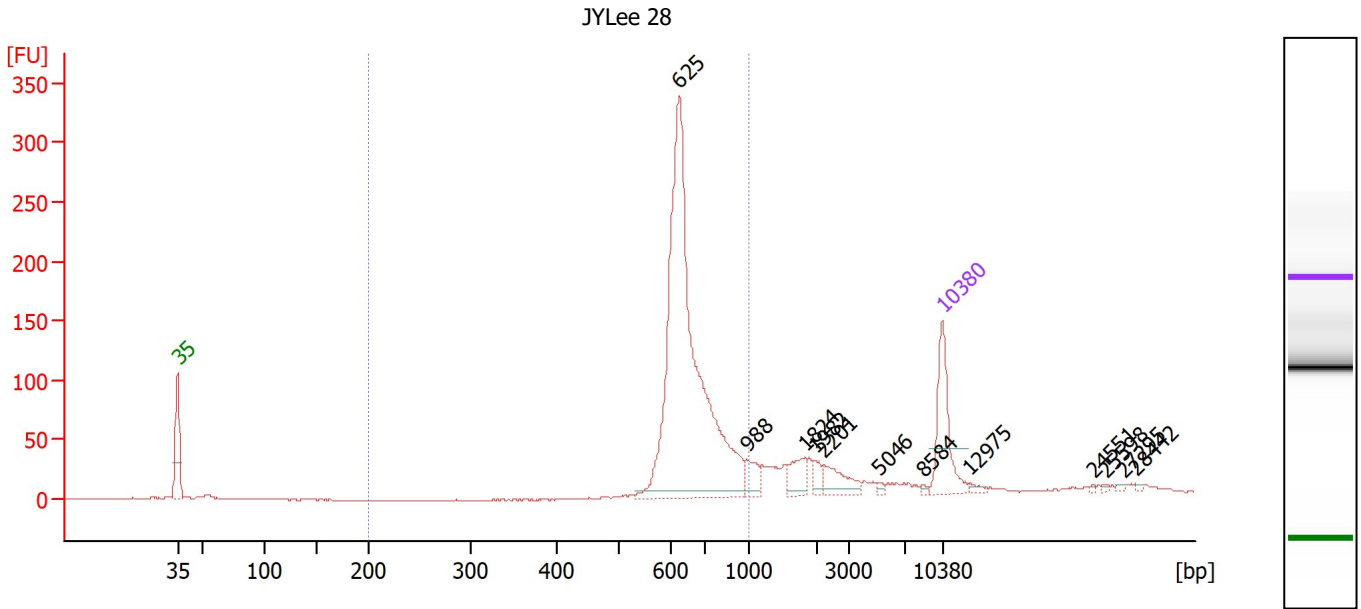
Region table for sample 2 : ENonnecke 20

From [bp]	To [bp]	Corr. Area	% of Total	Average Size [bp]	Size distribution in CV [%]	Conc. [pg/μl]	Molarity [pmol/l]	Color
200	1,000	1,099.4	76	649	11.2	686.77	1,619.6	Blue

Assay Class: High Sensitivity DNA Assay
 Data Path: Z:\...\Bioanalyzer1_High Sensitivity DNA Assay_2019-12-23_001.xad

Created: 12/23/2019 12:41:59 PM
 Modified: 12/23/2019 1:17:37 PM

Electropherogram Summary Continued ...



Overall Results for sample 3 : JYLee 28

Number of peaks found: 12 Corr. Area 1: 1,056.3
 Noise: 0.6

Peak table for sample 3 : JYLee 28

Peak	Size [bp]	Conc. [pg/μl]	Molarity [pmol/l]	Observations
1	35	125.00	5,411.3	Lower Marker
2	625	685.72	1,663.2	
3	988	23.27	35.7	
4	1,824	28.74	23.9	
5	1,982	11.20	8.6	
6	2,201	33.01	22.7	
7	5,046	4.06	1.2	
8	8,584	2.44	0.4	
9	10,380	75.00	10.9	Upper Marker
10	12,975	0.00	0.0	
11	24,551	0.00	0.0	
12	25,598	0.00	0.0	
13	27,295	0.00	0.0	
14	28,442	0.00	0.0	

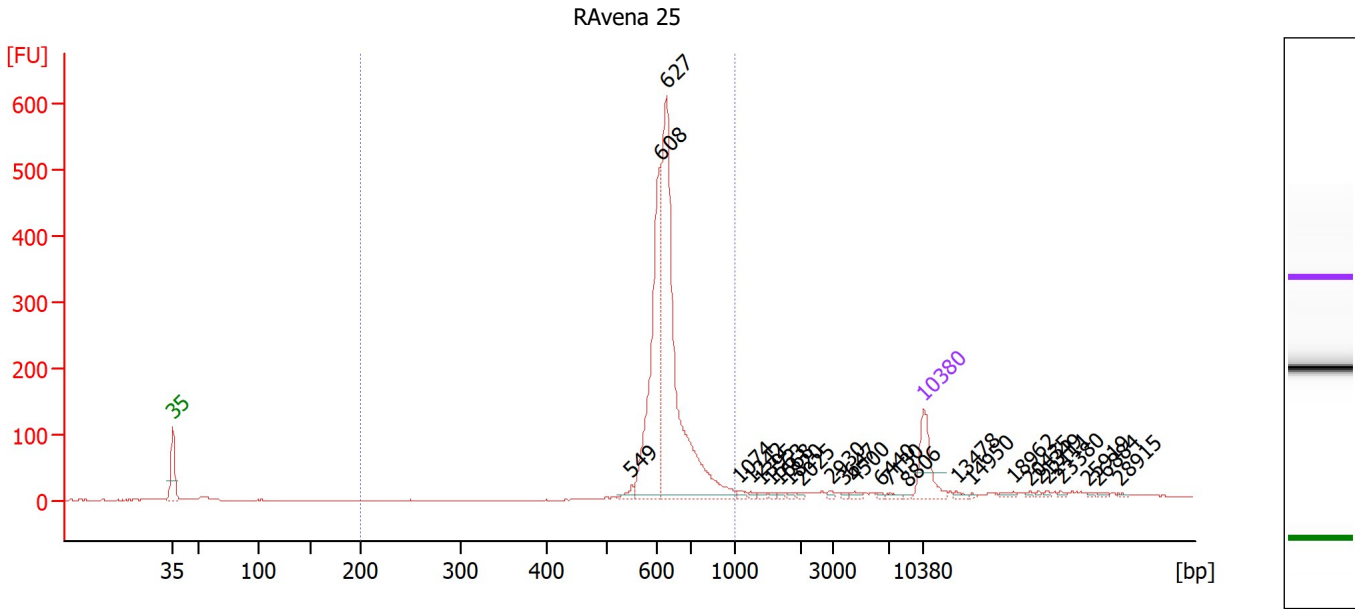
Region table for sample 3 : JYLee 28

From [bp]	To [bp]	Corr. Area	% of Total	Average Size [bp]	Size distribution in CV [%]	Conc. [pg/μl]	Molarity [pmol/l]	Color
200	1,000	1,056.3	74	669	13.7	670.08	1,541.8	Blue

Assay Class: High Sensitivity DNA Assay
 Data Path: Z:\...\Bioanalyzer1_High Sensitivity DNA Assay_2019-12-23_001.xad

Created: 12/23/2019 12:41:59 PM
 Modified: 12/23/2019 1:17:37 PM

Electropherogram Summary Continued ...



Overall Results for sample 4 : RAvena 25

Number of peaks found: 26 Corr. Area 1: 1,647.2
 Noise: 0.5

Peak table for sample 4 : RAvena 25

Peak	Size [bp]	Conc. [pg/μl]	Molarity [pmol/l]	Observations
1	35	125.00	5,411.3	Lower Marker
2	549	12.30	34.0	
3	608	409.37	1,020.9	
4	627	709.61	1,715.0	
5	1,074	7.15	10.1	
6	1,242	3.99	4.9	
7	1,395	4.90	5.3	
8	1,563	3.76	3.6	
9	1,668	3.74	3.4	
10	1,820	3.65	3.0	
11	2,025	4.26	3.2	
12	2,930	4.56	2.4	
13	3,647	3.98	1.7	
14	4,500	5.38	1.8	
15	6,440	2.72	0.6	
16	7,130	4.89	1.0	
17	8,806	1.95	0.3	
18	10,380	75.00	10.9	Upper Marker
19	13,478	0.00	0.0	
20	14,950	0.00	0.0	
21	18,962	0.00	0.0	
22	20,435	0.00	0.0	
23	21,349	0.00	0.0	
24	22,111	0.00	0.0	
25	23,380	0.00	0.0	
26	25,919	0.00	0.0	

Assay Class: High Sensitivity DNA Assay
 Data Path: Z:\...\Bioanalyzer1_High Sensitivity DNA Assay_2019-12-23_001.xad

Created: 12/23/2019 12:41:59 PM
 Modified: 12/23/2019 1:17:37 PM

Electropherogram Summary Continued ...

... Peak table for sample 4 : RAvena 25

Peak	Size [bp]	Conc. [pg/μl]	Molarity [pmol/l]	Observations
27	26,884	0.00	0.0	
28	28,915	0.00	0.0	

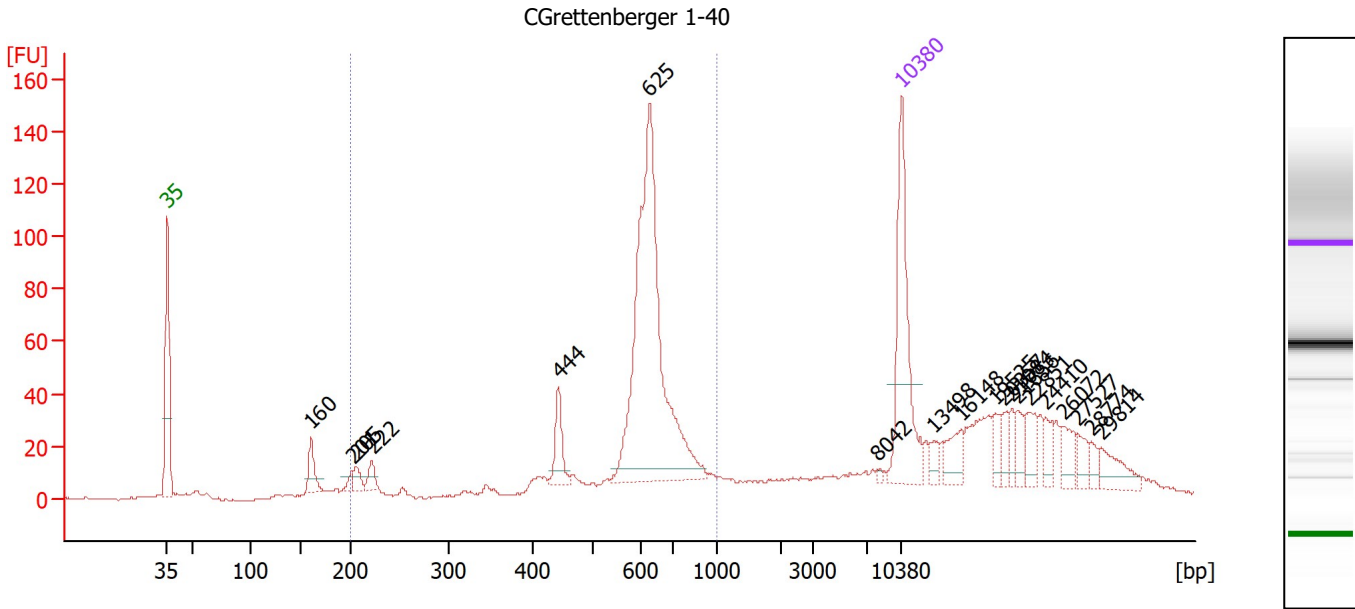
Region table for sample 4 : RAvena 25

From [bp]	To [bp]	Corr. Area	% of Total	Average Size [bp]	Size distribution in CV [%]	Conc. [pg/μl]	Molarity [pmol/l]	Color
200	1,000	1,647.2	86	638	10.6	1,129.28	2,708.3	■

Assay Class: High Sensitivity DNA Assay
 Data Path: Z:\...\Bioanalyzer1_High Sensitivity DNA Assay_2019-12-23_001.xad

Created: 12/23/2019 12:41:59 PM
 Modified: 12/23/2019 1:17:37 PM

Electropherogram Summary Continued ...



Overall Results for sample 5 : CGrettenberger 1-40

Number of peaks found: 19 Corr. Area 1: 627.8
 Noise: 0.5

Peak table for sample 5 : CGrettenberger 1-40

Peak	Size [bp]	Conc. [pg/μl]	Molarity [pmol/l]	Observations
1	35	125.00	5,411.3	Lower Marker
2	160	21.64	205.4	
3	201	5.56	42.0	
4	205	9.31	68.7	
5	222	10.89	74.5	
6	444	23.56	80.5	
7	625	263.12	637.5	
8	8,042	1.54	0.3	
9	10,380	75.00	10.9	Upper Marker
10	13,498	0.00	0.0	
11	16,148	0.00	0.0	
12	19,525	0.00	0.0	
13	20,357	0.00	0.0	
14	21,084	0.00	0.0	
15	21,656	0.00	0.0	
16	22,851	0.00	0.0	
17	24,410	0.00	0.0	
18	26,072	0.00	0.0	
19	27,527	0.00	0.0	
20	28,774	0.00	0.0	
21	29,814	0.00	0.0	

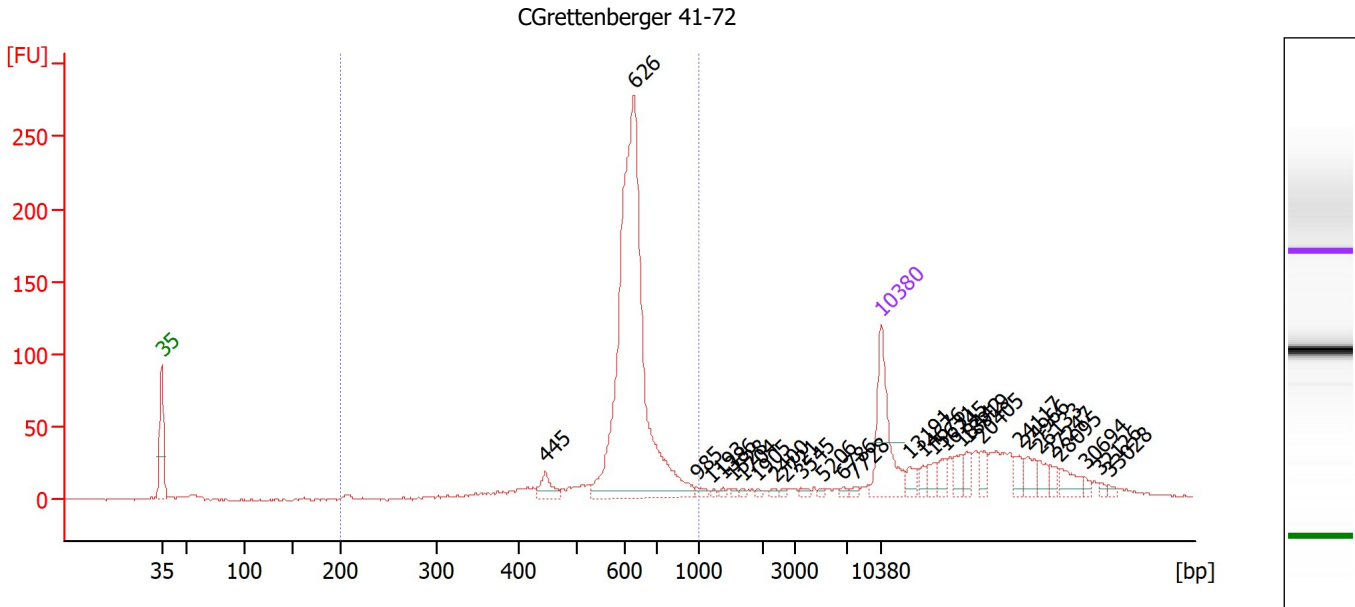
Region table for sample 5 : CGrettenberger 1-40

From [bp]	To [bp]	Corr. Area	% of Total	Average Size [bp]	Size distribution in CV [%]	Conc. [pg/μl]	Molarity [pmol/l]	Color
200	1,000	627.8	53	596	23.0	405.18	1,207.1	Blue

Assay Class: High Sensitivity DNA Assay
 Data Path: Z:\...\Bioanalyzer1_High Sensitivity DNA Assay_2019-12-23_001.xad

Created: 12/23/2019 12:41:59 PM
 Modified: 12/23/2019 1:17:37 PM

Electropherogram Summary Continued ...



Overall Results for sample 6 : CGrettenberger 41-72

Number of peaks found: 29 Corr. Area 1: 934.7
 Noise: 0.7

Peak table for sample 6 : CGrettenberger 41-72

Peak	Size [bp]	Conc. [pg/μl]	Molarity [pmol/l]	Observations
1	35	125.00	5,411.3	Lower Marker
2	445	21.62	73.6	
3	626	572.38	1,385.4	
4	985	5.64	8.7	
5	1,193	2.16	2.7	
6	1,386	2.68	2.9	
7	1,528	2.59	2.6	
8	1,704	2.57	2.3	
9	1,905	2.27	1.8	
10	2,400	2.72	1.7	
11	2,721	2.34	1.3	
12	3,545	3.62	1.5	
13	5,206	2.42	0.7	
14	6,786	3.20	0.7	
15	7,728	3.02	0.6	
16	10,380	75.00	10.9	Upper Marker
17	13,191	0.00	0.0	
18	14,676	0.00	0.0	
19	15,631	0.00	0.0	
20	16,745	0.00	0.0	
21	18,442	0.00	0.0	
22	18,919	0.00	0.0	
23	20,405	0.00	0.0	
24	24,117	0.00	0.0	
25	24,966	0.00	0.0	
26	26,133	0.00	0.0	

Assay Class: High Sensitivity DNA Assay
 Data Path: Z:\...\Bioanalyzer1_High Sensitivity DNA Assay_2019-12-23_001.xad

Created: 12/23/2019 12:41:59 PM
 Modified: 12/23/2019 1:17:37 PM

Electropherogram Summary Continued ...

... Peak table for sample 6 : CGrettenberger 41-72

Peak	Size [bp]	Conc. [pg/μl]	Molarity [pmol/l]	Observations
27	27,247	0.00	0.0	
28	28,095	0.00	0.0	
29	30,694	0.00	0.0	
30	32,126	0.00	0.0	
31	33,028	0.00	0.0	

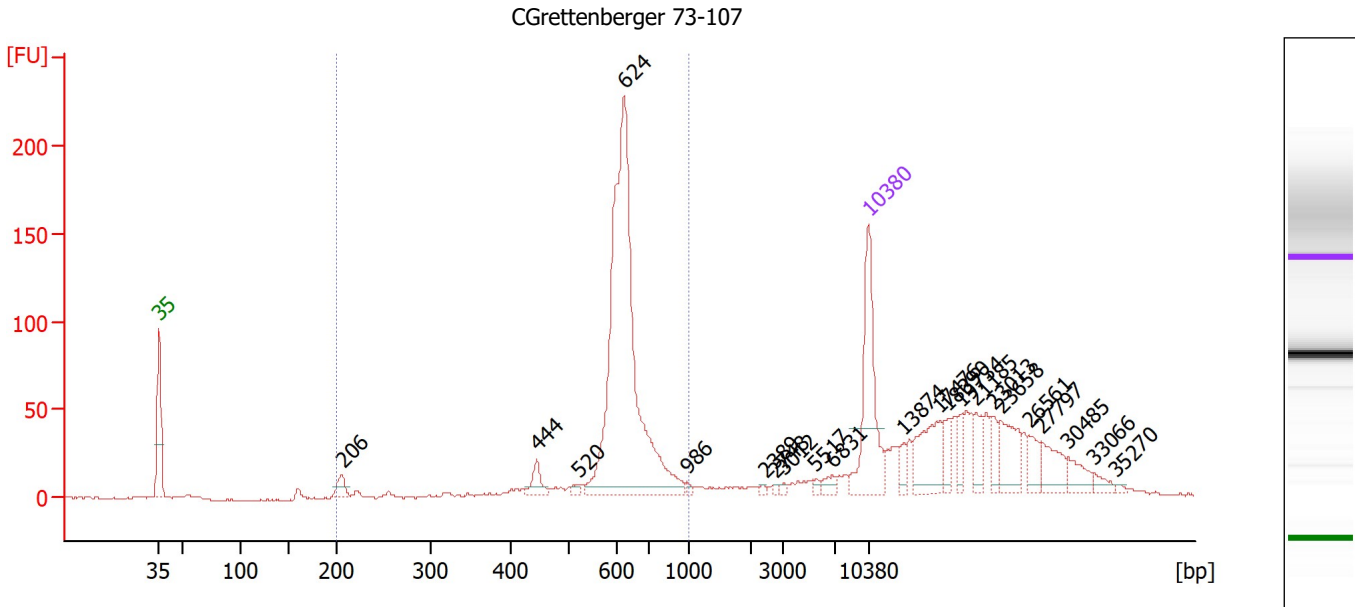
Region table for sample 6 : CGrettenberger 41-72

From [bp]	To [bp]	Corr. Area	% of Total	Average Size [bp]	Size distribution in CV [%]	Conc. [pg/μl]	Molarity [pmol/l]	Color
200	1,000	934.7	66	613	14.7	651.95	1,674.3	

Assay Class: High Sensitivity DNA Assay
 Data Path: Z:\...\Bioanalyzer1_High Sensitivity DNA Assay_2019-12-23_001.xad

Created: 12/23/2019 12:41:59 PM
 Modified: 12/23/2019 1:17:37 PM

Electropherogram Summary Continued ...



Overall Results for sample 7 : CGrettenberger 73-107

Number of peaks found: 22 Corr. Area 1: 757.1
 Noise: 0.7

Peak table for sample 7 : CGrettenberger 73-107

Peak	Size [bp]	Conc. [pg/μl]	Molarity [pmol/l]	Observations
1	35	125.00	5,411.3	Lower Marker
2	206	12.68	93.4	
3	444	15.25	52.0	
4	520	4.11	12.0	
5	624	375.15	911.0	
6	986	2.36	3.6	
7	2,389	1.83	1.2	
8	2,748	1.61	0.9	
9	3,012	1.84	0.9	
10	5,517	2.83	0.8	
11	6,831	6.01	1.3	
12	10,380	75.00	10.9	Upper Marker
13	13,874	0.00	0.0	
14	17,476	0.00	0.0	
15	18,390	0.00	0.0	
16	19,734	0.00	0.0	
17	21,185	0.00	0.0	
18	23,013	0.00	0.0	
19	23,658	0.00	0.0	
20	26,561	0.00	0.0	
21	27,797	0.00	0.0	
22	30,485	0.00	0.0	
23	33,066	0.00	0.0	
24	35,270	0.00	0.0	

Assay Class: High Sensitivity DNA Assay
 Data Path: Z:\...\Bioanalyzer1_High Sensitivity DNA Assay_2019-12-23_001.xad

Created: 12/23/2019 12:41:59 PM
 Modified: 12/23/2019 1:17:37 PM

Electropherogram Summary Continued ...

... Region table for sample 7 :

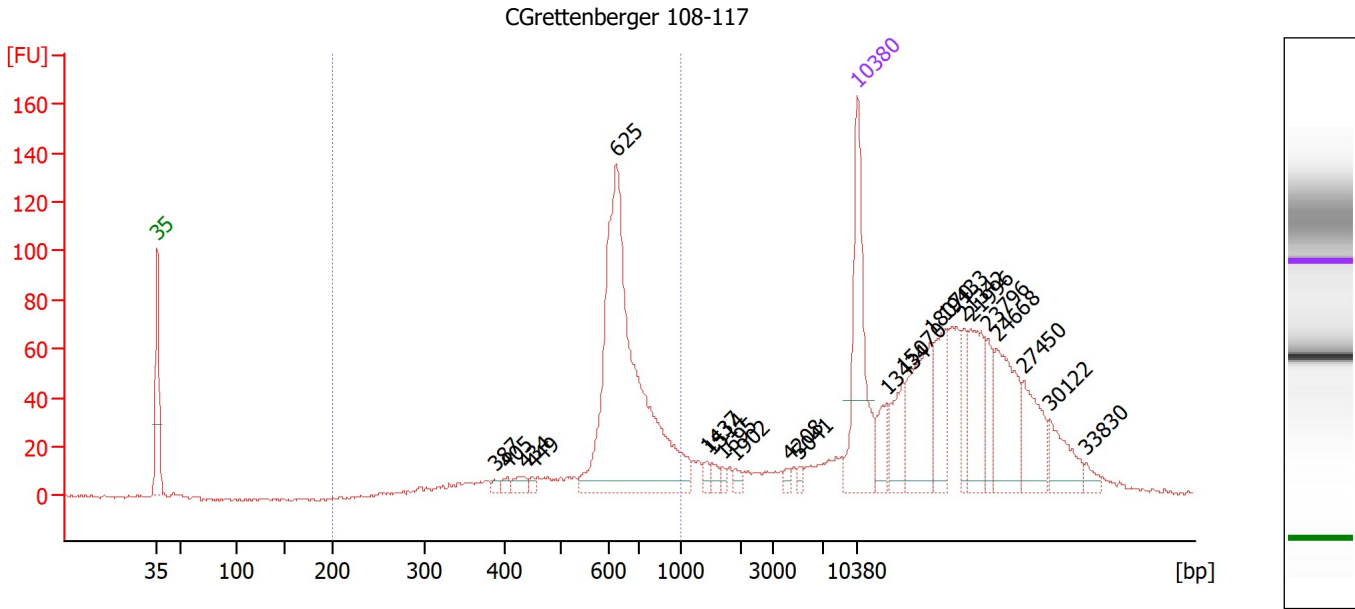
CGrettenberger 73-107

From [bp]	To [bp]	Corr. Area	% of Total	Average Size [bp]	Size distribution in CV [%]	Conc. [pg/μl]	Molarity [pmol/l]	Color
200	1,000	757.1	53	614	17.2	438.89	1,178.1	■

Assay Class: High Sensitivity DNA Assay
 Data Path: Z:\...\Bioanalyzer1_High Sensitivity DNA Assay_2019-12-23_001.xad

Created: 12/23/2019 12:41:59 PM
 Modified: 12/23/2019 1:17:37 PM

Electropherogram Summary Continued ...



Overall Results for sample 8 : CGrettenberger 108-117

Number of peaks found: 22 Corr. Area 1: 641.2
 Noise: 0.5

Peak table for sample 8 : CGrettenberger 108-117

Peak	Size [bp]	Conc. [pg/μl]	Molarity [pmol/l]	Observations
1	35	125.00	5,411.3	Lower Marker
2	387	3.65	14.3	
3	405	4.17	15.6	
4	434	7.57	26.4	
5	449	3.06	10.3	
6	625	290.27	704.0	
7	1,437	3.96	4.2	
8	1,514	5.27	5.3	
9	1,695	3.10	2.8	
10	1,902	3.55	2.8	
11	4,208	2.85	1.0	
12	5,041	2.88	0.9	
13	10,380	75.00	10.9	Upper Marker
14	13,434	0.00	0.0	
15	15,070	0.00	0.0	
16	18,070	0.00	0.0	
17	19,433	0.00	0.0	
18	21,342	0.00	0.0	
19	21,996	0.00	0.0	
20	23,796	0.00	0.0	
21	24,668	0.00	0.0	
22	27,450	0.00	0.0	
23	30,122	0.00	0.0	
24	33,830	0.00	0.0	

Assay Class: High Sensitivity DNA Assay
 Data Path: Z:\...\Bioanalyzer1_High Sensitivity DNA Assay_2019-12-23_001.xad

Created: 12/23/2019 12:41:59 PM
 Modified: 12/23/2019 1:17:37 PM

Electropherogram Summary Continued ...

... Region table for sample 8 :

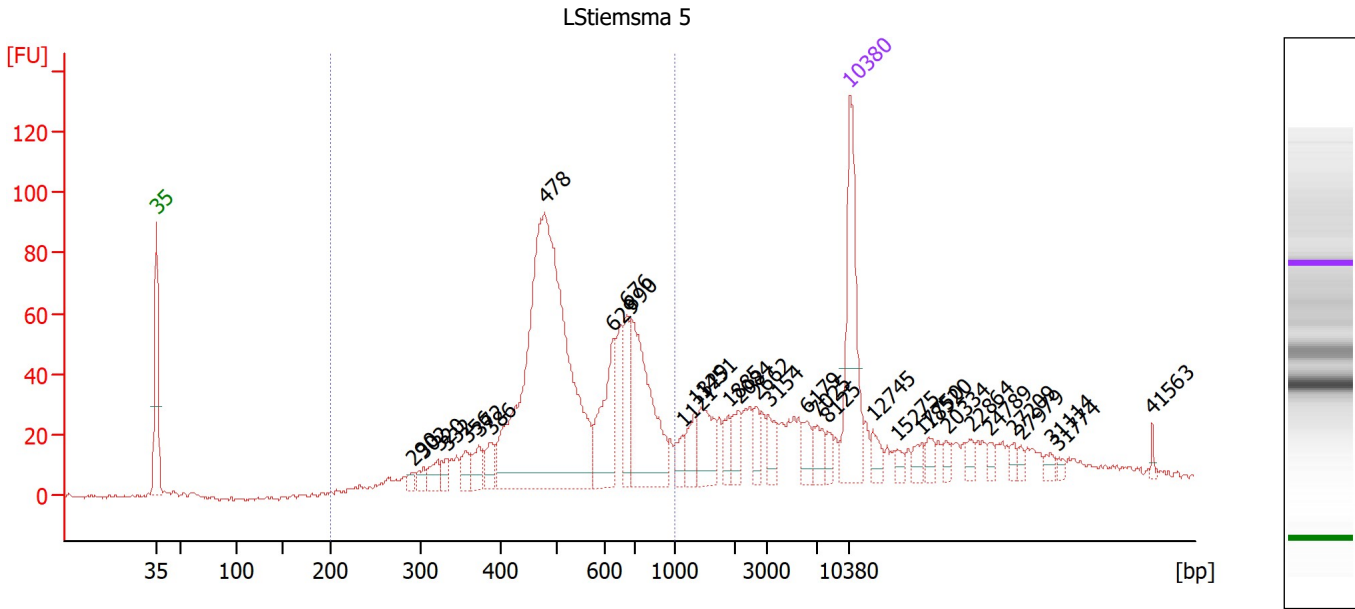
CGrettenberger 108-117

From [bp]	To [bp]	Corr. Area	% of Total	Average Size [bp]	Size distribution in CV [%]	Conc. [pg/μl]	Molarity [pmol/l]	Color
200	1,000	641.2	39	633	21.4	347.99	903.3	■

Assay Class: High Sensitivity DNA Assay
 Data Path: Z:\...\Bioanalyzer1_High Sensitivity DNA Assay_2019-12-23_001.xad

Created: 12/23/2019 12:41:59 PM
 Modified: 12/23/2019 1:17:37 PM

Electropherogram Summary Continued ...



Overall Results for sample 9 : LStiemsma 5

Number of peaks found: 33 Corr. Area 1: 1,003.0
 Noise: 0.8

Peak table for sample 9 : LStiemsma 5

Peak	Size [bp]	Conc. [pg/μl]	Molarity [pmol/l]	Observations
1	35	125.00	5,411.3	Lower Marker
2	290	7.10	37.1	
3	302	9.33	46.8	
4	320	14.13	66.8	
5	332	9.53	43.4	
6	356	14.57	62.0	
7	372	16.75	68.2	
8	386	15.07	59.1	
9	478	437.94	1,388.1	
10	629	62.85	151.5	
11	676	34.70	77.8	
12	690	107.79	236.7	
13	1,121	10.78	14.6	
14	1,329	17.76	20.2	
15	1,451	29.83	31.1	
16	1,885	12.12	9.7	
17	2,084	14.11	10.3	
18	2,662	10.85	6.2	
19	3,154	14.50	7.0	
20	6,179	12.11	3.0	
21	7,025	12.66	2.7	
22	8,125	7.20	1.3	
23	10,380	75.00	10.9	Upper Marker
24	12,745	0.00	0.0	
25	15,275	0.00	0.0	
26	17,750	0.00	0.0	

Assay Class: High Sensitivity DNA Assay
 Data Path: Z:\...\Bioanalyzer1_High Sensitivity DNA Assay_2019-12-23_001.xad

Created: 12/23/2019 12:41:59 PM
 Modified: 12/23/2019 1:17:37 PM

Electropherogram Summary Continued ...

... Peak table for sample 9 : LStiemsma 5

Peak	Size [bp]	Conc. [pg/μl]	Molarity [pmol/l]	Observations
27	18,520	0.00	0.0	
28	20,334	0.00	0.0	
29	22,864	0.00	0.0	
30	24,789	0.00	0.0	
31	27,209	0.00	0.0	
32	27,979	0.00	0.0	
33	31,114	0.00	0.0	
34	31,774	0.00	0.0	
35	41,563	0.00	0.0	

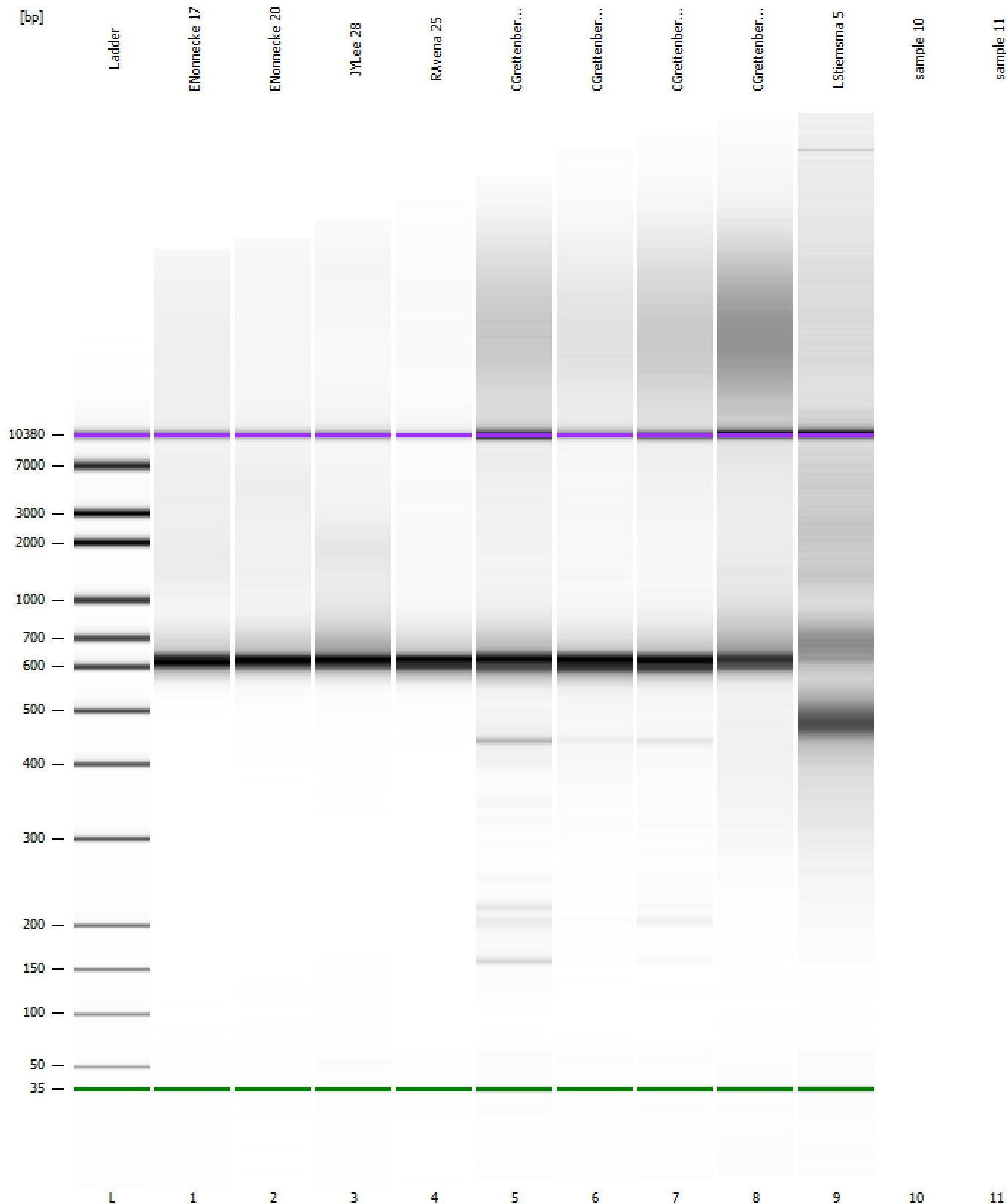
Region table for sample 9 : LStiemsma 5

From [bp]	To [bp]	Corr. Area	% of Total	Average Size [bp]	Size distribution in CV [%]	Conc. [pg/μl]	Molarity [pmol/l]	Color
200	1,000	1,003.0	64	543	27.1	798.27	2,470.0	

Assay Class: High Sensitivity DNA Assay
 Data Path: Z:\...\Bioanalyzer1_High Sensitivity DNA Assay_2019-12-23_001.xad

Created: 12/23/2019 12:41:59 PM
 Modified: 12/23/2019 1:17:37 PM

Gel Image

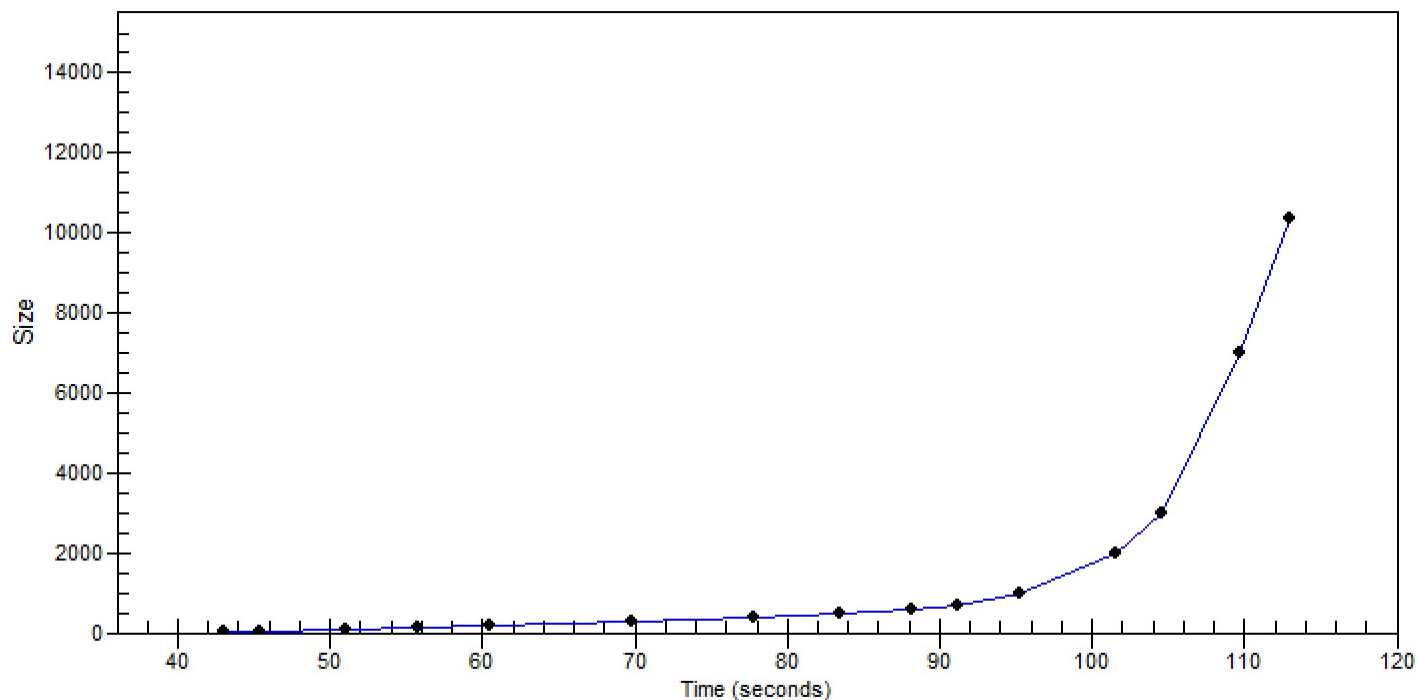


Assay Class: High Sensitivity DNA Assay
Data Path: Z:\...\Bioanalyzer1_High Sensitivity DNA Assay_2019-12-23_001.xad

Created: 12/23/2019 12:41:59 PM
Modified: 12/23/2019 1:17:37 PM

Curves

Standard Curve



Assay Class: High Sensitivity DNA Assay
Data Path: Z:\...\Bioanalyzer1_High Sensitivity DNA Assay_2019-12-23_001.xad

Created: 12/23/2019 12:41:59 PM
Modified: 12/23/2019 1:17:37 PM

Invalid Samples

Sample 10 has not been run, no results available.

Sample 11 has not been run, no results available.

Assay Class: High Sensitivity DNA Assay
 Data Path: Z:\...\Bioanalyzer1_High Sensitivity DNA Assay_2019-12-23_001.xad

Created: 12/23/2019 12:41:59 PM
 Modified: 12/23/2019 1:17:37 PM

Run Logbook

Description	Number	Source	Category	Sub Category	Time	Time Zone	User	Host
Run ended on port 1 (Number of wells acquired: 10)		Instrument	Run		12/23/2019 1:17:34 PM	(GMT --08:00) Pacific Standard Time	sbsuser	DESKTOP-4UNV VOB
Run started on port 1 (File: Z:\XADs\2019-12-23\Bioanalyze r1_High Sensitivity DNA Assay_2019-12-23_001.xad)		Instrument	Run		12/23/2019 12:42:05 PM	(GMT --08:00) Pacific Standard Time	sbsuser	DESKTOP-4UNV VOB
Product Number : G2938C		Instrument	Run		12/23/2019 12:42:05 PM	(GMT --08:00) Pacific Standard Time	sbsuser	DESKTOP-4UNV VOB
Name :		Instrument	Run		12/23/2019 12:42:05 PM	(GMT --08:00) Pacific Standard Time	sbsuser	DESKTOP-4UNV VOB
Vendor : Agilent Technologies		Instrument	Run		12/23/2019 12:42:05 PM	(GMT --08:00) Pacific Standard Time	sbsuser	DESKTOP-4UNV VOB
Serial# : DE34903152		Instrument	Run		12/23/2019 12:42:05 PM	(GMT --08:00) Pacific Standard Time	sbsuser	DESKTOP-4UNV VOB
Firmware : C.01.069		Instrument	Run		12/23/2019 12:42:05 PM	(GMT --08:00) Pacific Standard Time	sbsuser	DESKTOP-4UNV VOB
Cartridge : Electrode		Instrument	Run		12/23/2019 12:42:05 PM	(GMT --08:00) Pacific Standard Time	sbsuser	DESKTOP-4UNV VOB