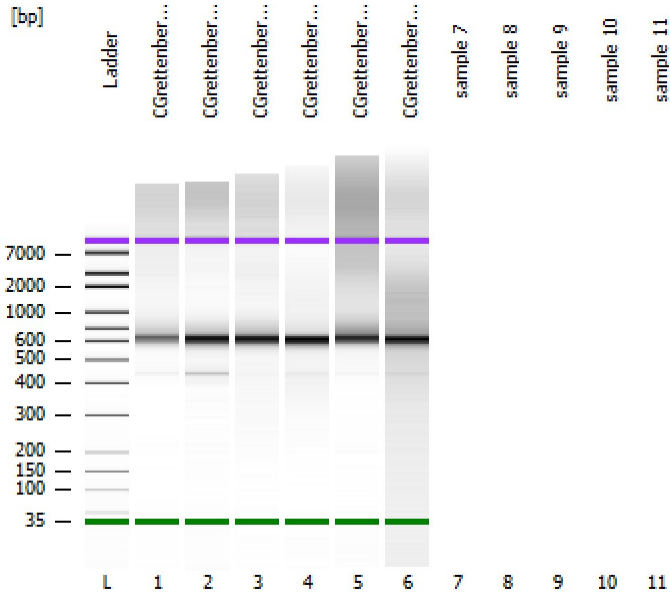


Assay Class: High Sensitivity DNA Assay
 Data Path: Z:\...\Bioanalyzer1_High Sensitivity DNA Assay_2019-12-27_001.xad

Created: 12/27/2019 1:13:27 PM
 Modified: 12/27/2019 1:40:32 PM

Electrophoresis File Run Summary



Instrument Information:

Instrument Name: DE34903152 Firmware: C.01.069
 Serial#: DE34903152 Type: G2938C

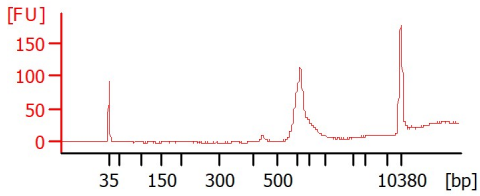
Assay Information:

Assay Origin Path: C:\Program Files (x86)\Agilent\2100 bioanalyzer\2100 expert\assays\dsDNA\High Sensitivity DNA.xsy
 Assay Class: High Sensitivity DNA Assay
 Version: 1.03
 Assay Comments: Copyright © 2003-2010 Agilent Technologies

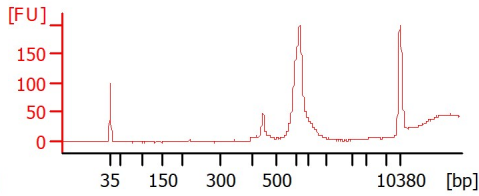
Chip Information:

Chip Lot #:
 Reagent Kit Lot #:
 Chip Comments:

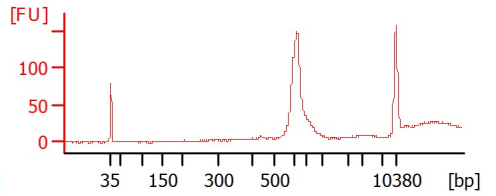
CGrettenberger 1-40 0.5x



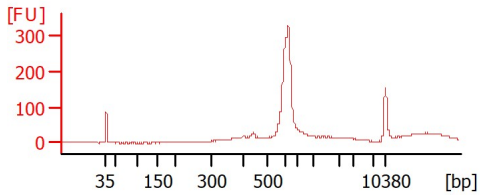
CGrettenberger 1-40 0.6x



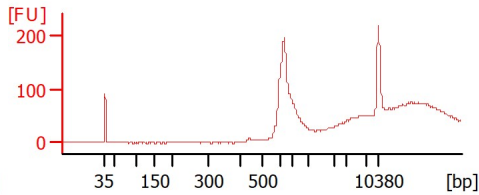
CGrettenberger 41-72 0.5x



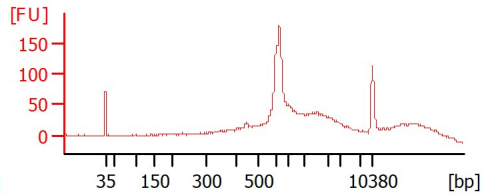
CGrettenberger 41-72 0.6x



CGrettenberger 73-107 0.5x



CGrettenberger 73-107 0.6x



Assay Class: High Sensitivity DNA Assay
 Data Path: Z:\...\Bioanalyzer1_High Sensitivity DNA Assay_2019-12-27_001.xad

Created: 12/27/2019 1:13:27 PM
 Modified: 12/27/2019 1:40:32 PM

Electrophoresis File Run Summary (Chip Summary)

Sample Name	Sample Comment	Rest. Digest	Status	Observation	Result Label	Result Color
CGrettenberger 1-40 0.5x		<input type="checkbox"/>	✓			
CGrettenberger 1-40 0.6x		<input type="checkbox"/>	✓			
CGrettenberger 41-72 0.5x		<input type="checkbox"/>	✓			
CGrettenberger 41-72 0.6x		<input type="checkbox"/>	✓			
CGrettenberger 73-107 0.5x		<input type="checkbox"/>	✓			
CGrettenberger 73-107 0.6x		<input type="checkbox"/>	✓			
sample 7		<input type="checkbox"/>				
sample 8		<input type="checkbox"/>				
sample 9		<input type="checkbox"/>				
sample 10		<input type="checkbox"/>				
sample 11		<input type="checkbox"/>				
Ladder		<input type="checkbox"/>	✓			

Chip Lot #

Reagent Kit Lot #

Chip Comments :

Assay Class: High Sensitivity DNA Assay
 Data Path: Z:\...\Bioanalyzer1_High Sensitivity DNA Assay_2019-12-27_001.xad

Created: 12/27/2019 1:13:27 PM
 Modified: 12/27/2019 1:40:32 PM

Electrophoresis Assay Details

General Analysis Settings

Number of Available Sample and Ladder Wells (Max.) : 12
 Minimum Visible Range [s] : 32
 Maximum Visible Range [s] : 138
 Start Analysis Time Range [s] : 33
 End Analysis Time Range [s] : 137.5
 Ladder Concentration [pg/μl] : 1950
 Uses Standard Area for Ladder Fragments
 Lower Marker Concentration [pg/μl] : 125
 Upper Marker Concentration [pg/μl] : 75
 Used Upper Marker for Quantitation
 Standard Curve Fit is Point to Point
 Show Data Aligned to Lower and Upper Marker

Integrator Settings

Integration Start Time [s] : 33.05
 Integration End Time [s] : 137
 Slope Threshold : 0.8
 Height Threshold [FU] : 5
 Area Threshold : 0.1
 Width Threshold [s] : 0.6
 Baseline Plateau [s] : 0.5

Filter Settings

Filter Width [s] : 0.5
 Polynomial Order : 4

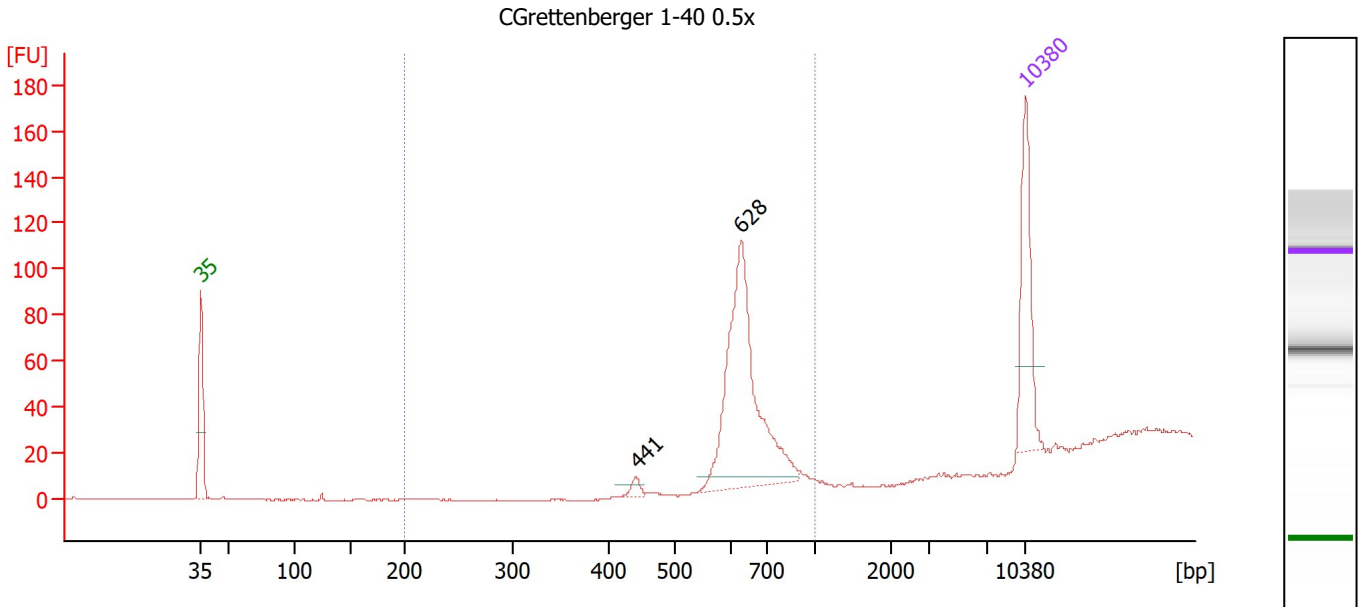
Ladder

Ladder Peak	Size	Area
1	35	160
2	50	210
3	100	208
4	150	221
5	200	242
6	300	270
7	400	305
8	500	306
9	600	336
10	700	321
11	1000	366
12	2000	413
13	3000	411
14	7000	400
15	10380	214

Assay Class: High Sensitivity DNA Assay
 Data Path: Z:\...\Bioanalyzer1_High Sensitivity DNA Assay_2019-12-27_001.xad

Created: 12/27/2019 1:13:27 PM
 Modified: 12/27/2019 1:40:32 PM

Electropherogram Summary



Overall Results for sample 1 : CGrettenberger 1-40 0.5x

Number of peaks found: 2 Corr. Area 1: 233.8
 Noise: 0.2

Peak table for sample 1 : CGrettenberger 1-40 0.5x

Peak	Size [bp]	Conc. [pg/μl]	Molarity [pmol/l]	Observations
1	35	125.00	5,411.3	Lower Marker
2	441	7.77	26.7	
3	628	250.74	604.7	
4	10,380	75.00	10.9	Upper Marker

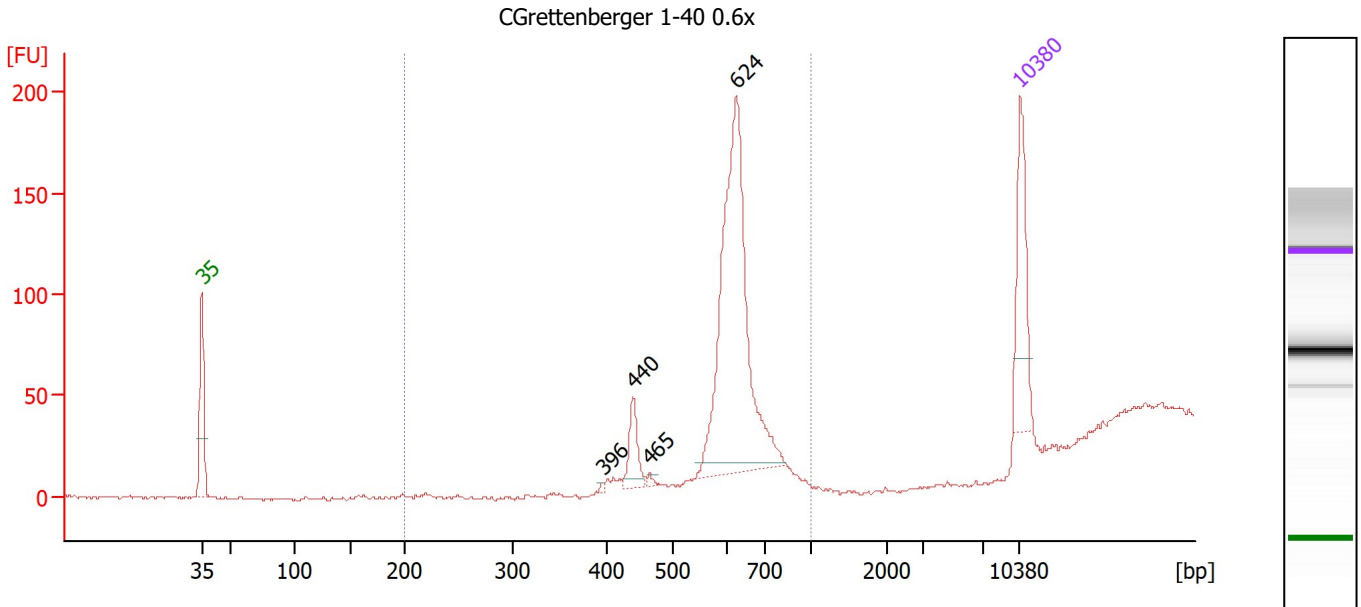
Region table for sample 1 : CGrettenberger 1-40 0.5x

From [bp]	To [bp]	Corr. Area	% of Total	Average Size [bp]	Size distribution in CV [%]	Conc. [pg/μl]	Molarity [pmol/l]	Color
200	1,000	233.8	96	633	5.7	173.06	415.0	Blue

Assay Class: High Sensitivity DNA Assay
 Data Path: Z:\...\Bioanalyzer1_High Sensitivity DNA Assay_2019-12-27_001.xad

Created: 12/27/2019 1:13:27 PM
 Modified: 12/27/2019 1:40:32 PM

Electropherogram Summary Continued ...



Overall Results for sample 2 : CGrettenberger 1-40 0.6x

Number of peaks found: 4 Corr. Area 1: 445.1
 Noise: 0.8

Peak table for sample 2 : CGrettenberger 1-40 0.6x

Peak	Size [bp]	Conc. [pg/μl]	Molarity [pmol/l]	Observations
1	35	125.00	5,411.3	Lower Marker
2	396	2.08	8.0	
3	440	38.41	132.2	
4	465	2.95	9.6	
5	624	381.60	927.1	
6	10,380	75.00	10.9	Upper Marker

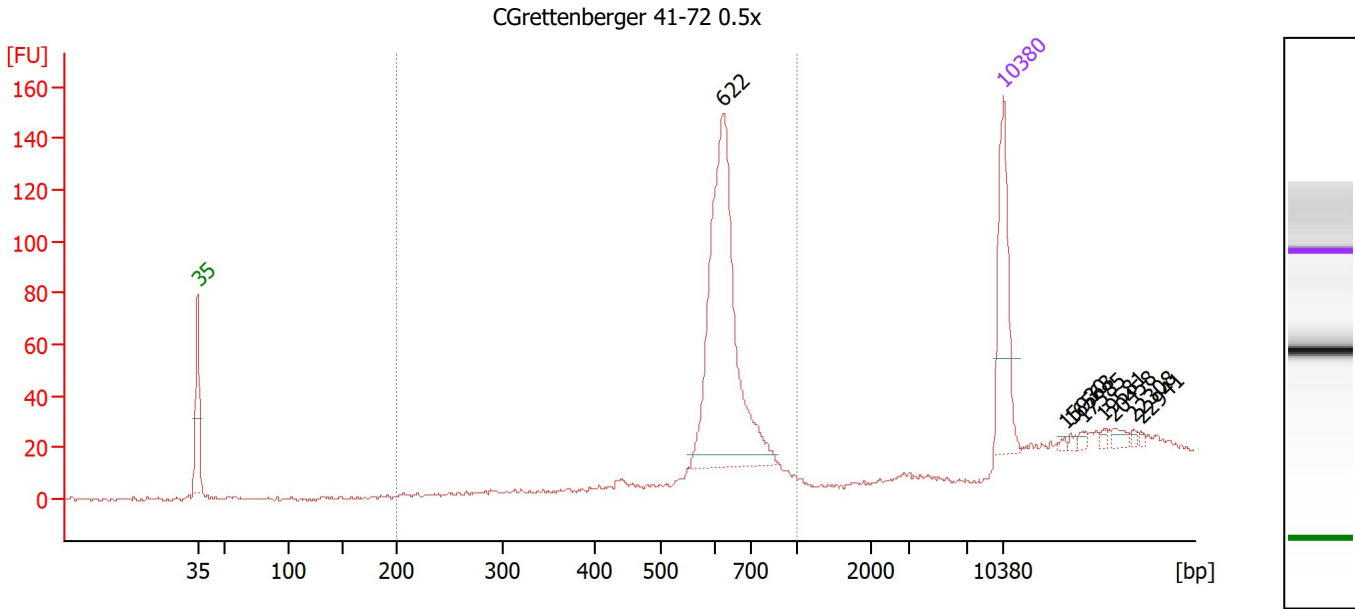
Region table for sample 2 : CGrettenberger 1-40 0.6x

From [bp]	To [bp]	Corr. Area	% of Total	Average Size [bp]	Size distribution in CV [%]	Conc. [pg/μl]	Molarity [pmol/l]	Color
200	1,000	445.1	96	613	7.2	323.07	805.5	Blue

Assay Class: High Sensitivity DNA Assay
 Data Path: Z:\...\Bioanalyzer1_High Sensitivity DNA Assay_2019-12-27_001.xad

Created: 12/27/2019 1:13:27 PM
 Modified: 12/27/2019 1:40:32 PM

Electropherogram Summary Continued ...



Overall Results for sample 3 : CGrettenberger 41-72 0.5x

Number of peaks found: 8 Corr. Area 1: 409.1
 Noise: 0.6

Peak table for sample 3 : CGrettenberger 41-72 0.5x

Peak	Size [bp]	Conc. [pg/μl]	Molarity [pmol/l]	Observations
1	35	125.00	5,411.3	Lower Marker
2	622	308.83	752.1	
3	10,380	75.00	10.9	Upper Marker
4	15,930	0.00	0.0	
5	16,563	0.00	0.0	
6	17,585	0.00	0.0	
7	19,581	0.00	0.0	
8	20,458	0.00	0.0	
9	22,308	0.00	0.0	
10	22,941	0.00	0.0	

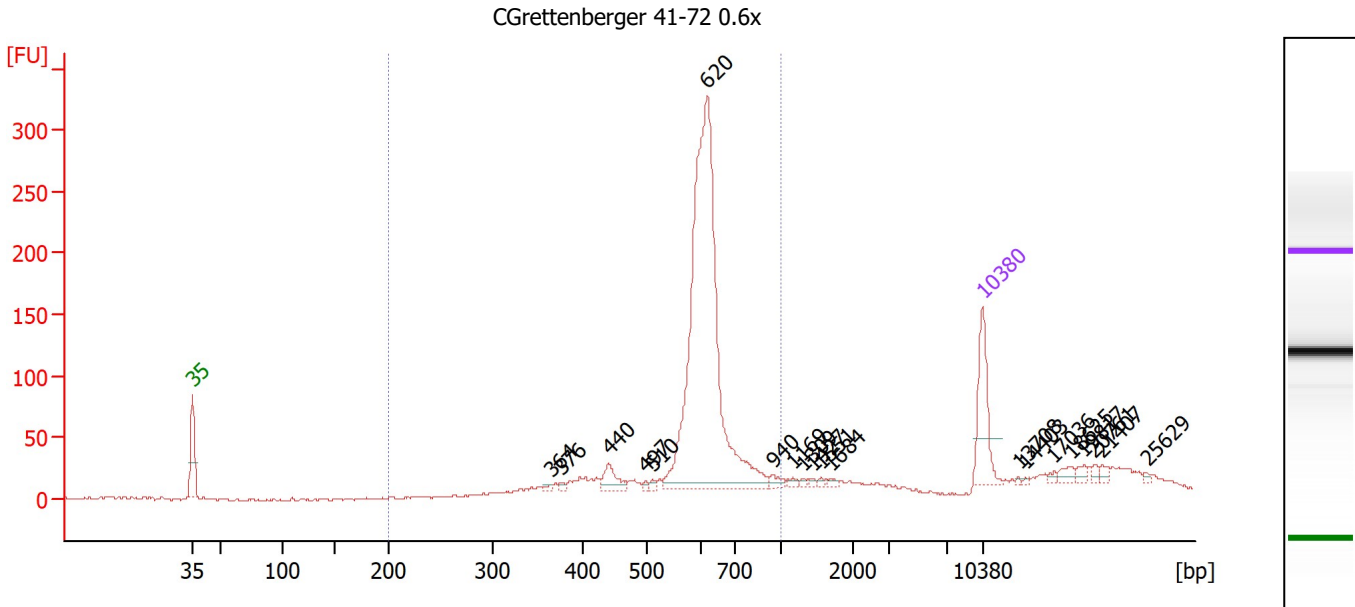
Region table for sample 3 : CGrettenberger 41-72 0.5x

From [bp]	To [bp]	Corr. Area	% of Total	Average Size [bp]	Size distribution in CV [%]	Conc. [pg/μl]	Molarity [pmol/l]	Color
200	1,000	409.1	86	630	7.6	316.75	765.3	Blue

Assay Class: High Sensitivity DNA Assay
 Data Path: Z:\...\Bioanalyzer1_High Sensitivity DNA Assay_2019-12-27_001.xad

Created: 12/27/2019 1:13:27 PM
 Modified: 12/27/2019 1:40:32 PM

Electropherogram Summary Continued ...



Overall Results for sample 4 : CGrettenberger 41-72 0.6x

Number of peaks found: 20 Corr. Area 1: 1,184.7
 Noise: 1.1

Peak table for sample 4 : CGrettenberger 41-72 0.6x

Peak	Size [bp]	Conc. [pg/μl]	Molarity [pmol/l]	Observations
1	35	125.00	5,411.3	Lower Marker
2	364	5.02	20.9	
3	376	5.60	22.6	
4	440	31.61	108.8	
5	497	4.16	12.7	
6	510	4.82	14.3	
7	620	760.43	1,858.2	
8	940	9.56	15.4	
9	1,169	5.19	6.7	
10	1,309	3.24	3.7	
11	1,427	3.30	3.5	
12	1,551	3.19	3.1	
13	1,684	3.53	3.2	
14	10,380	75.00	10.9	Upper Marker
15	13,708	0.00	0.0	
16	14,403	0.00	0.0	
17	17,036	0.00	0.0	
18	18,625	0.00	0.0	
19	19,817	0.00	0.0	
20	20,761	0.00	0.0	
21	21,407	0.00	0.0	
22	25,629	0.00	0.0	

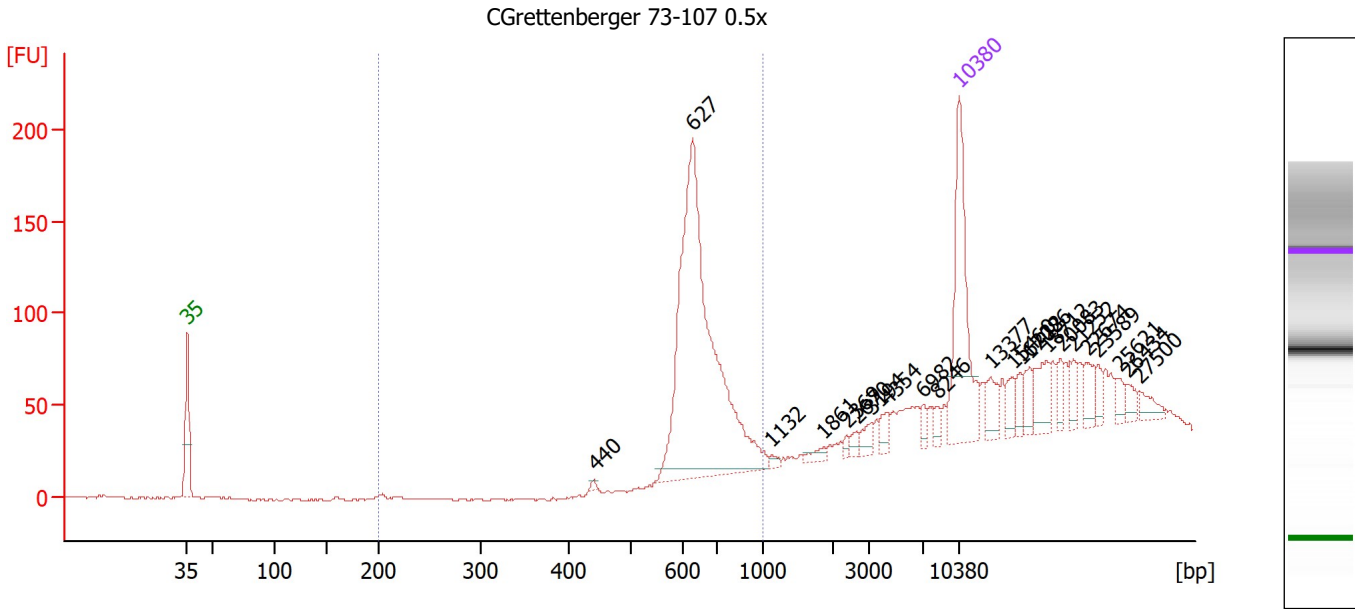
Region table for sample 4 : CGrettenberger 41-72 0.6x

From [bp]	To [bp]	Corr. Area	% of Total	Average Size [bp]	Size distribution in CV [%]	Conc. [pg/μl]	Molarity [pmol/l]	Color
200	1,000	1,184.7	82	602	16.0	946.96	2,485.8	Blue

Assay Class: High Sensitivity DNA Assay
 Data Path: Z:\...\Bioanalyzer1_High Sensitivity DNA Assay_2019-12-27_001.xad

Created: 12/27/2019 1:13:27 PM
 Modified: 12/27/2019 1:40:32 PM

Electropherogram Summary Continued ...



Overall Results for sample 5 : CGrettenberger 73-107 0.5x

Number of peaks found: 22 Corr. Area 1: 571.7
 Noise: 0.5

Peak table for sample 5 : CGrettenberger 73-107 0.5x

Peak	Size [bp]	Conc. [pg/μl]	Molarity [pmol/l]	Observations
1	35	125.00	5,411.3	Lower Marker
2	440	1.70	5.8	
3	627	309.88	748.8	
4	1,132	2.46	3.3	
5	1,861	4.89	4.0	
6	2,369	2.40	1.5	
7	2,670	3.93	2.2	
8	3,194	6.78	3.2	
9	4,354	7.33	2.6	
10	6,982	4.88	1.1	
11	8,246	4.82	0.9	
12	10,380	75.00	10.9	Upper Marker
13	13,377	0.00	0.0	
14	15,460	0.00	0.0	
15	16,222	0.00	0.0	
16	17,086	0.00	0.0	
17	18,712	0.00	0.0	
18	20,083	0.00	0.0	
19	21,252	0.00	0.0	
20	22,674	0.00	0.0	
21	23,589	0.00	0.0	
22	25,621	0.00	0.0	
23	26,434	0.00	0.0	
24	27,500	0.00	0.0	

Assay Class: High Sensitivity DNA Assay
 Data Path: Z:\...\Bioanalyzer1_High Sensitivity DNA Assay_2019-12-27_001.xad

Created: 12/27/2019 1:13:27 PM
 Modified: 12/27/2019 1:40:32 PM

Electropherogram Summary Continued ...

... Region table for sample 5 :

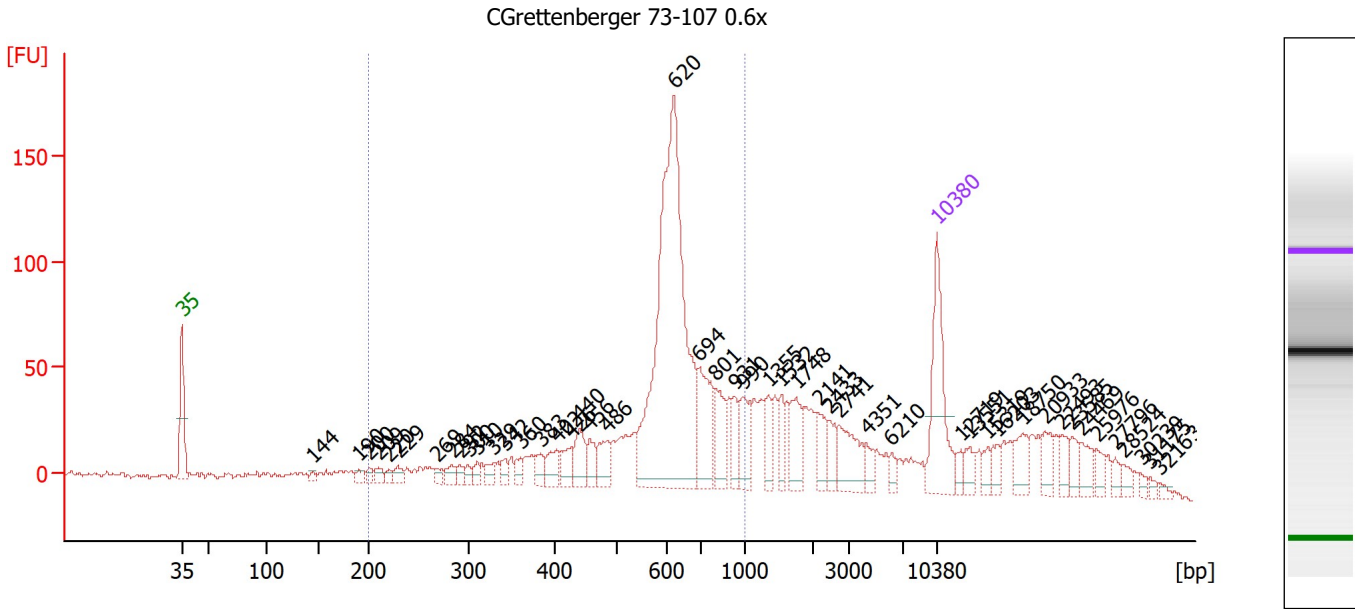
CGrettenberger 73-107 0.5x

From [bp]	To [bp]	Corr. Area	% of Total	Average Size [bp]	Size distribution in CV [%]	Conc. [pg/μl]	Molarity [pmol/l]	Color
200	1,000	571.7	50	656	10.7	256.99	599.0	■

Assay Class: High Sensitivity DNA Assay
 Data Path: Z:\...\Bioanalyzer1_High Sensitivity DNA Assay_2019-12-27_001.xad

Created: 12/27/2019 1:13:27 PM
 Modified: 12/27/2019 1:40:32 PM

Electropherogram Summary Continued ...



Overall Results for sample 6 : CGrettenberger 73-107 0.6x

Number of peaks found: 48 Corr. Area 1: 1,205.5
 Noise: 1.4

Peak table for sample 6 : CGrettenberger 73-107 0.6x

Peak	Size [bp]	Conc. [pg/μl]	Molarity [pmol/l]	Observations
1	35	125.00	5,411.3	Lower Marker
2	144	5.43	57.1	
3	190	8.41	67.1	
4	200	7.39	56.1	
5	209	10.57	76.5	
6	220	5.90	40.6	
7	229	11.23	74.4	
8	269	8.62	48.6	
9	284	13.20	70.5	
10	292	8.12	42.1	
11	300	7.29	36.8	
12	310	8.46	41.3	
13	329	11.03	50.7	
14	342	10.44	46.2	
15	360	11.37	47.8	
16	383	14.30	56.6	
17	402	20.86	78.7	
18	426	20.86	74.2	
19	440	29.73	102.4	
20	456	18.96	63.0	
21	486	27.01	84.2	
22	620	442.05	1,080.2	
23	694	69.93	152.6	
24	801	40.11	75.8	
25	931	22.52	36.7	
26	990	36.86	56.4	

Assay Class: High Sensitivity DNA Assay
 Data Path: Z:\...\Bioanalyzer1_High Sensitivity DNA Assay_2019-12-27_001.xad

Created: 12/27/2019 1:13:27 PM
 Modified: 12/27/2019 1:40:32 PM

Electropherogram Summary Continued ...

... Peak table for sample 6 : CGrettenberger 73-107 0.6x

Peak	Size [bp]	Conc. [pg/µl]	Molarity [pmol/l]	Observations
27	1,355	20.47	22.9	
28	1,532	18.25	18.0	
29	1,748	33.79	29.3	
30	2,141	23.26	16.5	
31	2,433	16.14	10.0	
32	2,741	38.89	21.5	
33	4,351	11.77	4.1	
34	6,210	7.92	1.9	
35	10,380	75.00	10.9	Upper Marker
36	12,719	0.00	0.0	
37	13,551	0.00	0.0	
38	15,319	0.00	0.0	
39	16,203	0.00	0.0	
40	18,750	0.00	0.0	
41	20,933	0.00	0.0	
42	22,493	0.00	0.0	
43	23,585	0.00	0.0	
44	24,469	0.00	0.0	
45	25,976	0.00	0.0	
46	27,796	0.00	0.0	
47	28,524	0.00	0.0	
48	30,239	0.00	0.0	
49	31,175	0.00	0.0	
50	32,163	0.00	0.0	

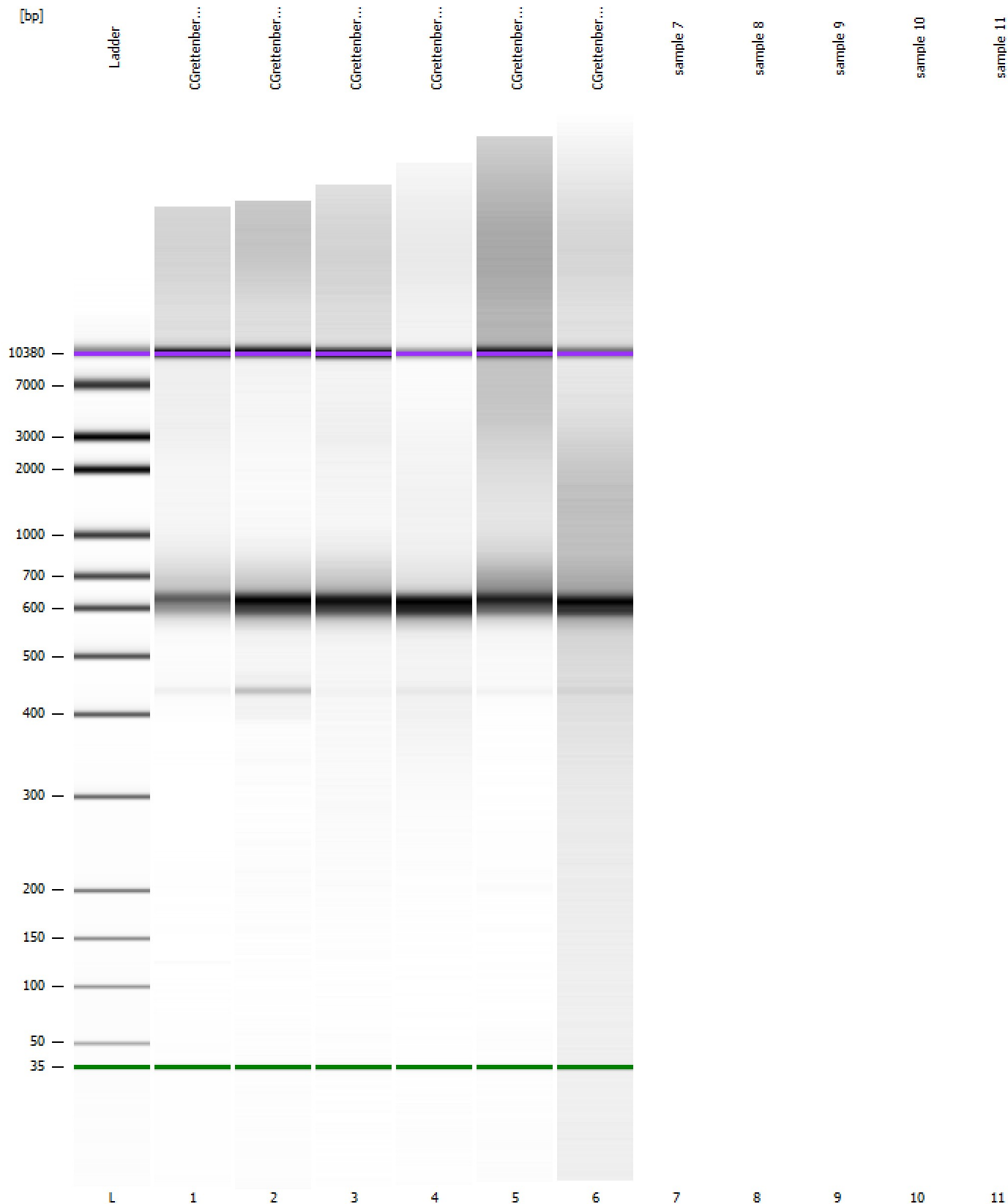
Region table for sample 6 : CGrettenberger 73-107 0.6x

From [bp]	To [bp]	Corr. Area	% of Total	Average Size [bp]	Size distribution in CV [%]	Conc. [pg/µl]	Molarity [pmol/l]	Color
200	1,000	1,205.5	57	590	28.3	959.55	2,897.1	

Assay Class: High Sensitivity DNA Assay
Data Path: Z:\...\Bioanalyzer1_High Sensitivity DNA Assay_2019-12-27_001.xad

Created: 12/27/2019 1:13:27 PM
Modified: 12/27/2019 1:40:32 PM

Gel Image

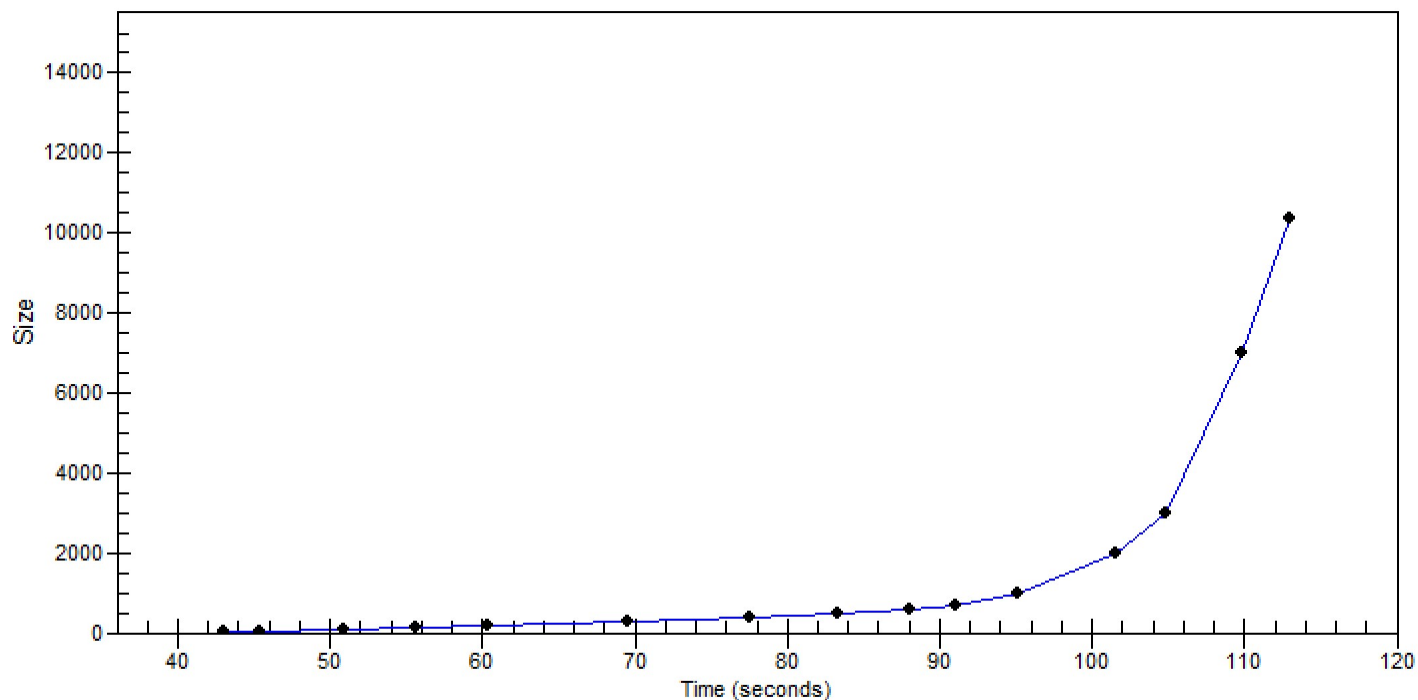


Assay Class: High Sensitivity DNA Assay
Data Path: Z:\...\Bioanalyzer1_High Sensitivity DNA Assay_2019-12-27_001.xad

Created: 12/27/2019 1:13:27 PM
Modified: 12/27/2019 1:40:32 PM

Curves

Standard Curve



Assay Class: High Sensitivity DNA Assay
Data Path: Z:\...\Bioanalyzer1_High Sensitivity DNA Assay_2019-12-27_001.xad

Created: 12/27/2019 1:13:27 PM
Modified: 12/27/2019 1:40:32 PM

Invalid Samples

Sample 7 has not been run, no results available.

Sample 8 has not been run, no results available.

Sample 9 has not been run, no results available.

Sample 10 has not been run, no results available.

Sample 11 has not been run, no results available.

Assay Class: High Sensitivity DNA Assay
 Data Path: Z:\...\Bioanalyzer1_High Sensitivity DNA Assay_2019-12-27_001.xad

Created: 12/27/2019 1:13:27 PM
 Modified: 12/27/2019 1:40:32 PM

Run Logbook

Description	Number	Source	Category	Sub Category	Time	Time Zone	User	Host
Run ended on port 1 (Number of wells acquired: 7)		Instrument	Run		12/27/2019 1:40:29 PM	(GMT --08:00) Pacific Standard Time	sbsuser	DESKTOP-4UNV VOB
Run started on port 1 (File: Z:\XADs\2019-12-27\Bioanalyze r1_High Sensitivity DNA Assay_2019-12-27_001.xad)		Instrument	Run		12/27/2019 1:13:33 PM	(GMT --08:00) Pacific Standard Time	sbsuser	DESKTOP-4UNV VOB
Product Number : G2938C		Instrument	Run		12/27/2019 1:13:33 PM	(GMT --08:00) Pacific Standard Time	sbsuser	DESKTOP-4UNV VOB
Name :		Instrument	Run		12/27/2019 1:13:33 PM	(GMT --08:00) Pacific Standard Time	sbsuser	DESKTOP-4UNV VOB
Vendor : Agilent Technologies		Instrument	Run		12/27/2019 1:13:33 PM	(GMT --08:00) Pacific Standard Time	sbsuser	DESKTOP-4UNV VOB
Serial# : DE34903152		Instrument	Run		12/27/2019 1:13:33 PM	(GMT --08:00) Pacific Standard Time	sbsuser	DESKTOP-4UNV VOB
Firmware : C.01.069		Instrument	Run		12/27/2019 1:13:33 PM	(GMT --08:00) Pacific Standard Time	sbsuser	DESKTOP-4UNV VOB
Cartridge : Electrode		Instrument	Run		12/27/2019 1:13:33 PM	(GMT --08:00) Pacific Standard Time	sbsuser	DESKTOP-4UNV VOB