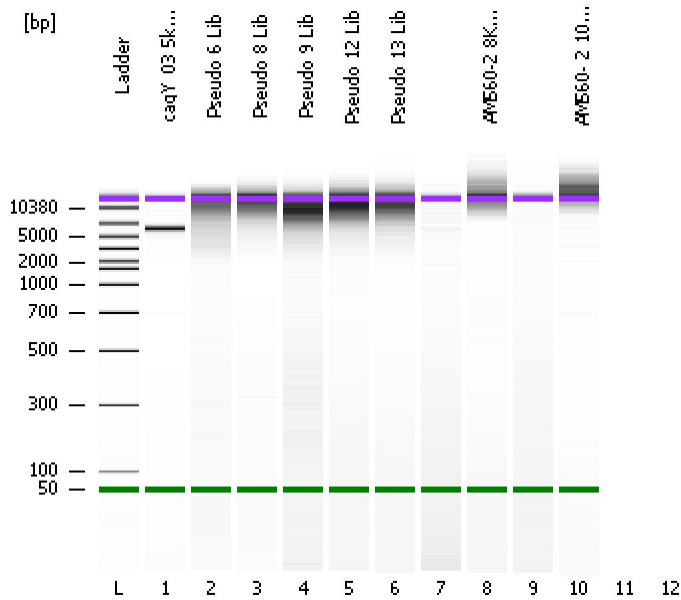


Assay Class: DNA 12000
Data Path: C:\...ents and Settings\Bioanalyzer\2015-01-13\2015-01-13_001.xad

Created: 1/13/2015 1:05:52 PM
Modified: 1/13/2015 1:39:49 PM

Electrophoresis File Run Summary



Instrument Information:

Instrument Name: DE13701086 Firmware: C.01.069
Serial#: DE13701086 Type: G2938B

Assay Information:

Assay Origin Path: C:\Program Files\Agilent\2100 bioanalyzer\2100 expert\assays\dsDNA\DNA 12000 Series II.xsy

Assay Class: DNA 12000
Version: 2.4
Assay Comments: DNA Analysis 100 -12000 bp

© Copyright 2003-2009 Agilent Technologies, Inc.

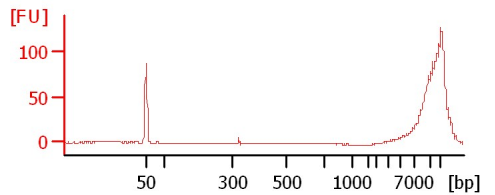
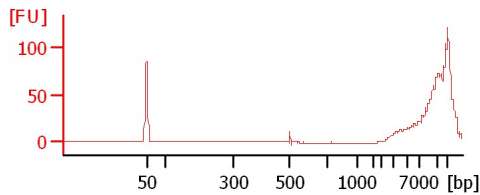
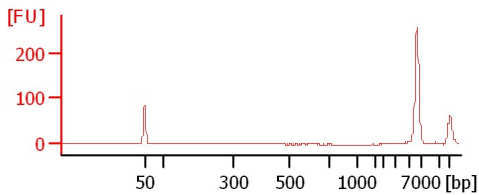
Chip Information:

Chip Lot #:
Reagent Kit Lot #:
Chip Comments:

cagY_03 5kb amplicon lib

Pseudo 6 Lib

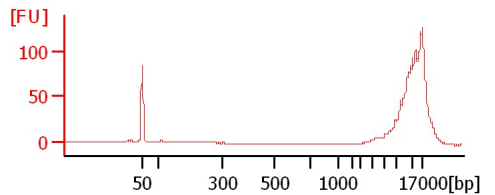
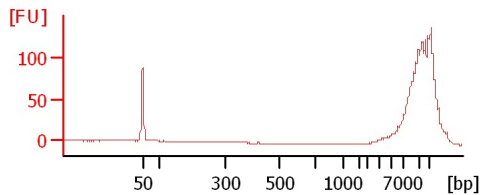
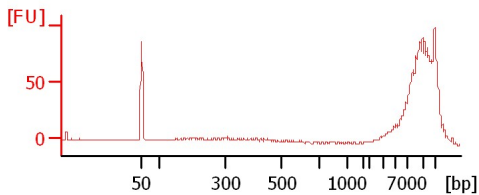
Pseudo 8 Lib



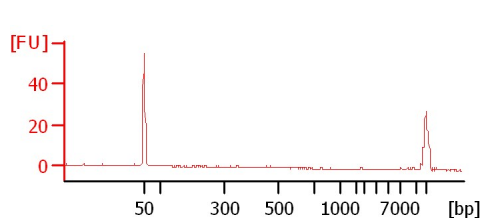
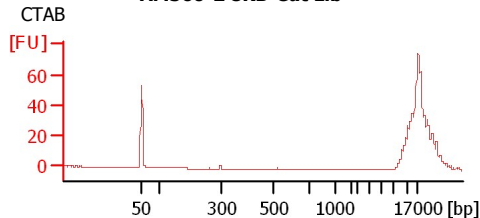
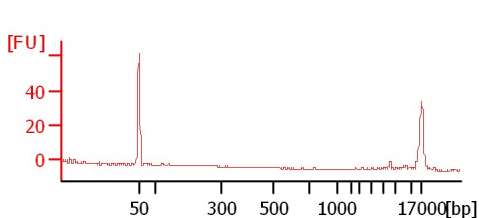
Pseudo 9 Lib

Pseudo 12 Lib

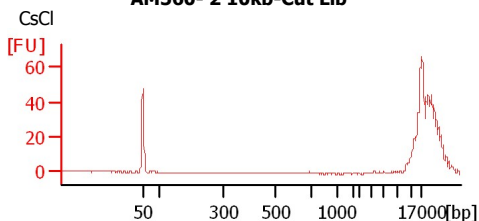
Pseudo 13 Lib



AM560-2 8KB-Cut Lib



AM560-2 10kb-Cut Lib



Assay Class: DNA 12000
Data Path: C:\...ents and Settings\Bioanalyzer\2015-01-13\2015-01-13_001.xad

Created: 1/13/2015 1:05:52 PM
Modified: 1/13/2015 1:39:49 PM

Electrophoresis File Run Summary (Chip Summary)

Sample Name	Sample Comment	Rest. Digest	Status	Observation	Result Label	Result Color
cagY_03 5kb amplicon lib		<input type="checkbox"/>	✓			
Pseudo 6 Lib		<input type="checkbox"/>	✓			
Pseudo 8 Lib		<input type="checkbox"/>	✓			
Pseudo 9 Lib		<input type="checkbox"/>	✓			
Pseudo 12 Lib		<input type="checkbox"/>	✓			
Pseudo 13 Lib		<input type="checkbox"/>	✓			
AM560-2 8KB-Cut Lib	CTAB	<input type="checkbox"/>	✓			
AM560- 2 10kb-Cut Lib	CsCl	<input type="checkbox"/>	✓			
Ladder		<input type="checkbox"/>	✓			
Chip Lot #				Reagent Kit Lot #		

Chip Comments :

Assay Class: DNA 12000
Data Path: C:\...ents and Settings\Bioanalyzer\2015-01-13\2015-01-13_001.xad

Created: 1/13/2015 1:05:52 PM
Modified: 1/13/2015 1:39:49 PM

Electrophoresis Assay Details

General Analysis Settings

Number of Available Sample and Ladder Wells (Max.) : 13
Minimum Visible Range [s] : 20
Maximum Visible Range [s] : 99
Start Analysis Time Range [s] : 20
End Analysis Time Range [s] : 98.95
Ladder Concentration [ng/μl] : 44
Uses Standard Area for Ladder Fragments
Lower Marker Concentration [ng/μl] : 8.3
Upper Marker Concentration [ng/μl] : 4.2
Used Upper Marker for Quantitation
This is a Qualitative Assay Only
Standard Curve Fit is Point to Point
Show Data Aligned to Lower and Upper Marker

Integrator Settings

Integration Start Time [s] : 20
Integration End Time [s] : 98.95
Slope Threshold : 0.8
Height Threshold [FU] : 20
Area Threshold : 0.1
Width Threshold [s] : 0.5
Baseline Plateau [s] : 0.5

Filter Settings

Filter Width [s] : 0.5
Polynomial Order : 4

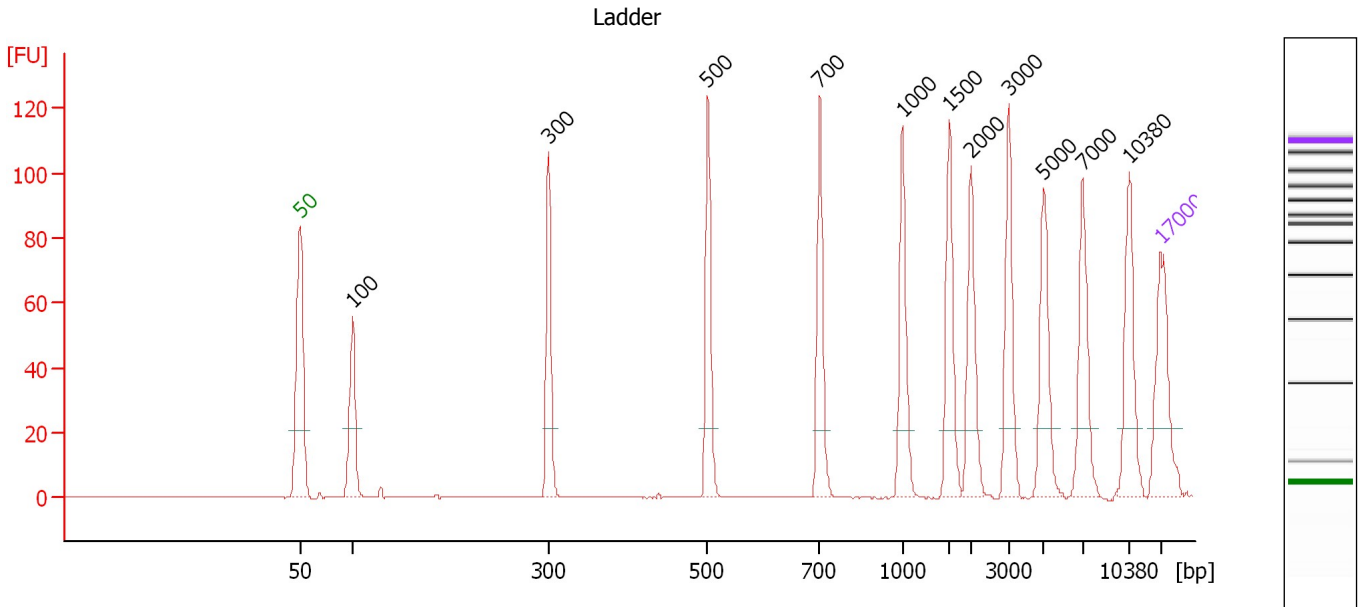
Ladder

Ladder Peak	Size	Area
1	50	120
2	100	48
3	300	61
4	500	77
5	700	81
6	1000	86
7	1500	92
8	2000	92
9	3000	96
10	5000	100
11	7000	98
12	10380	102
13	17000	110

Assay Class: DNA 12000
 Data Path: C:\...ents and Settings\Bioanalyzer\2015-01-13\2015-01-13_001.xad

Created: 1/13/2015 1:05:52 PM
 Modified: 1/13/2015 1:39:49 PM

Electropherogram Summary



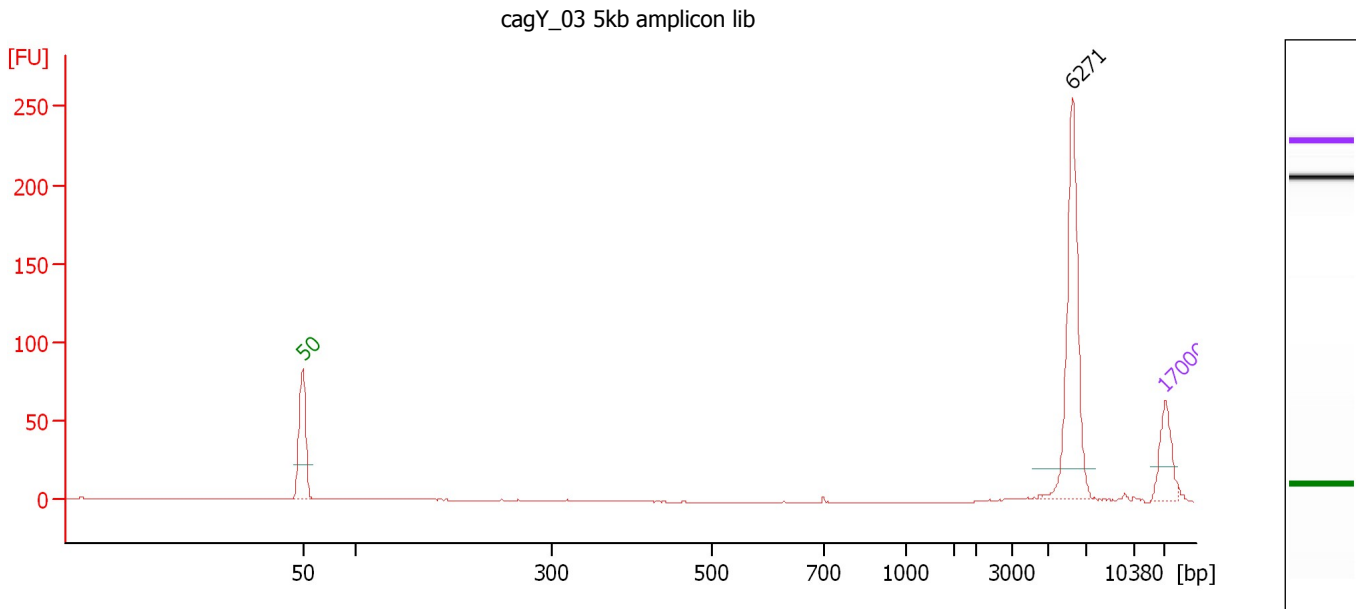
Peak table for Ladder

Peak	Size [bp]	Conc. [ng/μl]	Molarity [nmol/l]	Observations
1	50	8.30	251.5	Lower Marker
2	100	4.00	60.6	Ladder Peak
3	300	4.00	20.2	Ladder Peak
4	500	4.00	12.1	Ladder Peak
5	700	4.00	8.7	Ladder Peak
6	1,000	4.00	6.1	Ladder Peak
7	1,500	4.00	4.0	Ladder Peak
8	2,000	4.00	3.0	Ladder Peak
9	3,000	4.00	2.0	Ladder Peak
10	5,000	4.00	1.2	Ladder Peak
11	7,000	4.00	0.9	Ladder Peak
12	10,380	4.00	0.6	Ladder Peak
13	17,000	4.20	0.4	Upper Marker

Assay Class: DNA 12000
Data Path: C:\...ents and Settings\Bioanalyzer\2015-01-13\2015-01-13_001.xad

Created: 1/13/2015 1:05:52 PM
Modified: 1/13/2015 1:39:49 PM

Electropherogram Summary Continued ...



Overall Results for sample 1 : cagY_03 5kb amplicon lib

Number of peaks found: 1

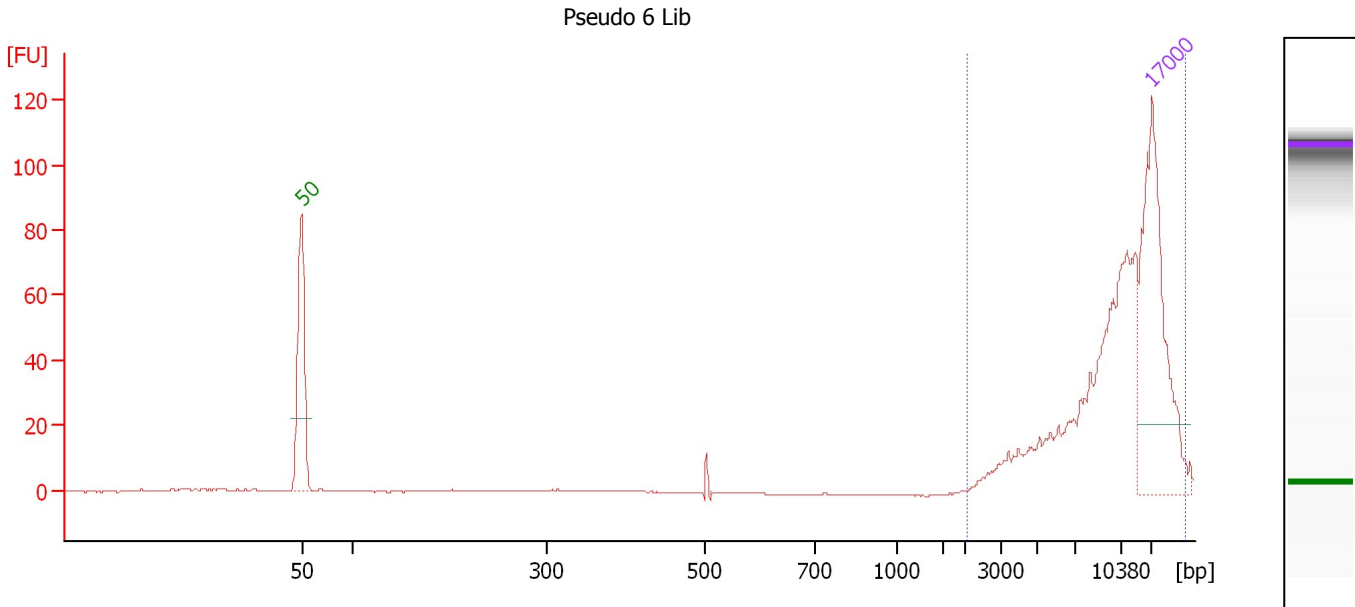
Peak table for sample 1 : cagY_03 5kb amplicon lib

Peak	Size [bp]	Conc. [ng/μl]	Molarity [nmol/l]	Observations
1	50	8.30	251.5	Lower Marker
2	6,271	16.72	4.0	
3	17,000	4.20	0.4	Upper Marker

Assay Class: DNA 12000
 Data Path: C:\...ents and Settings\Bioanalyzer\2015-01-13\2015-01-13_001.xad

Created: 1/13/2015 1:05:52 PM
 Modified: 1/13/2015 1:39:49 PM

Electropherogram Summary Continued ...



Overall Results for sample 2 : Pseudo 6 Lib

Number of peaks found: 0 Area 1: 249.0

Peak table for sample 2 : Pseudo 6 Lib

Peak	Size [bp]	Conc. [ng/μl]	Molarity [nmol/l]	Observations
1	50	8.30	251.5	Lower Marker
2	17,000	4.20	0.4	Upper Marker

Region table for sample 2 : Pseudo 6 Lib

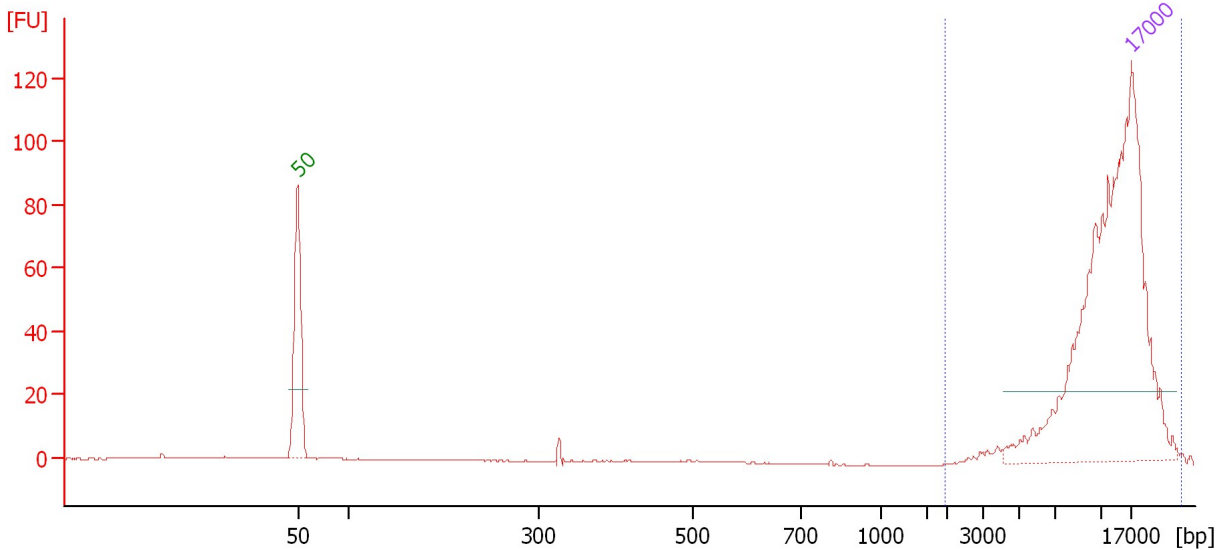
From [bp]	To [bp]	Average Size [bp]	Conc. [ng/μl]	Area	% of Total	Size distribution in CV [%]	Color
2,045	24,151	12,724	5.04	249.0	99	38.0	Blue

Assay Class: DNA 12000
 Data Path: C:\...ents and Settings\Bioanalyzer\2015-01-13\2015-01-13_001.xad

Created: 1/13/2015 1:05:52 PM
 Modified: 1/13/2015 1:39:49 PM

Electropherogram Summary Continued ...

Pseudo 8 Lib



Overall Results for sample 3 : Pseudo 8 Lib

Number of peaks found: 0 Area 1: 4.1

Peak table for sample 3 : Pseudo 8 Lib

Peak	Size [bp]	Conc. [ng/μl]	Molarity [nmol/l]	Observations
1	50	8.30	251.5	Lower Marker
2	17,000	4.20	0.4	Upper Marker

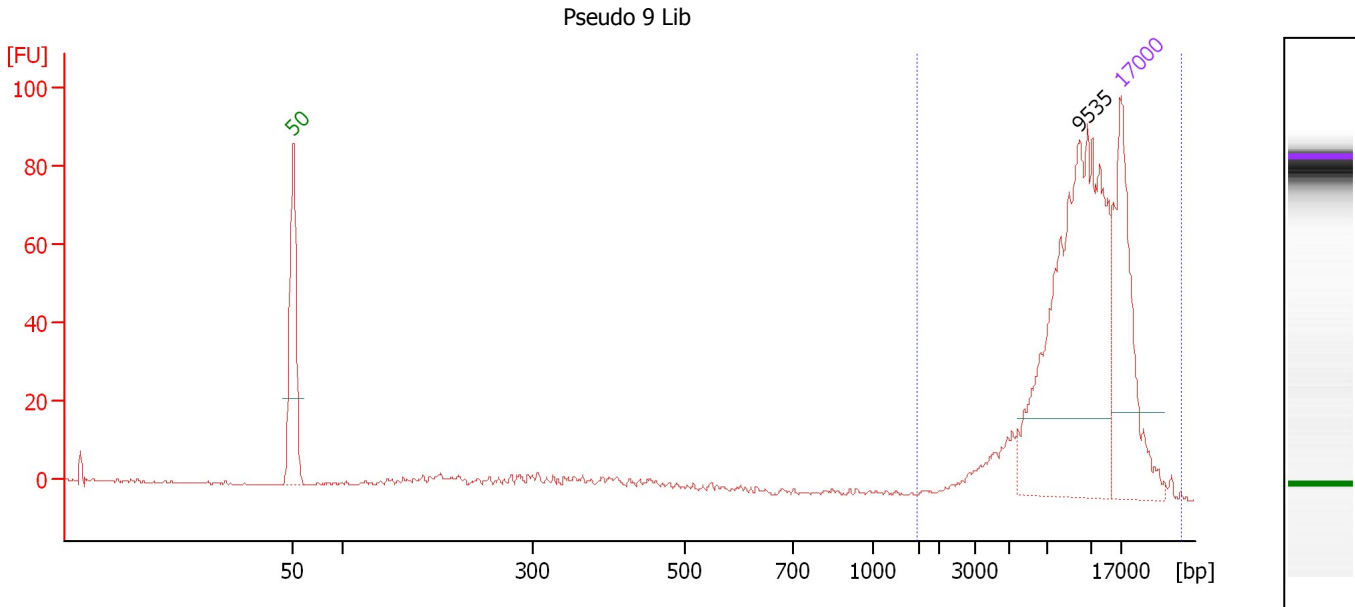
Region table for sample 3 : Pseudo 8 Lib

From [bp]	To [bp]	Average Size [bp]	Conc. [ng/μl]	Area	% of Total	Size distribution in CV [%]	Color
1,937	27,849	13,632	0.04	4.1	50	34.7	Blue

Assay Class: DNA 12000
 Data Path: C:\...ents and Settings\Bioanalyzer\2015-01-13\2015-01-13_001.xad

Created: 1/13/2015 1:05:52 PM
 Modified: 1/13/2015 1:39:49 PM

Electropherogram Summary Continued ...



Overall Results for sample 4 : Pseudo 9 Lib

Number of peaks found: 1 Area 1: 435.6

Peak table for sample 4 : Pseudo 9 Lib

Peak	Size [bp]	Conc. [ng/μl]	Molarity [nmol/l]	Observations
1	50	8.30	251.5	Lower Marker
2	9,535	11.28	1.8	
3	17,000	4.20	0.4	Upper Marker

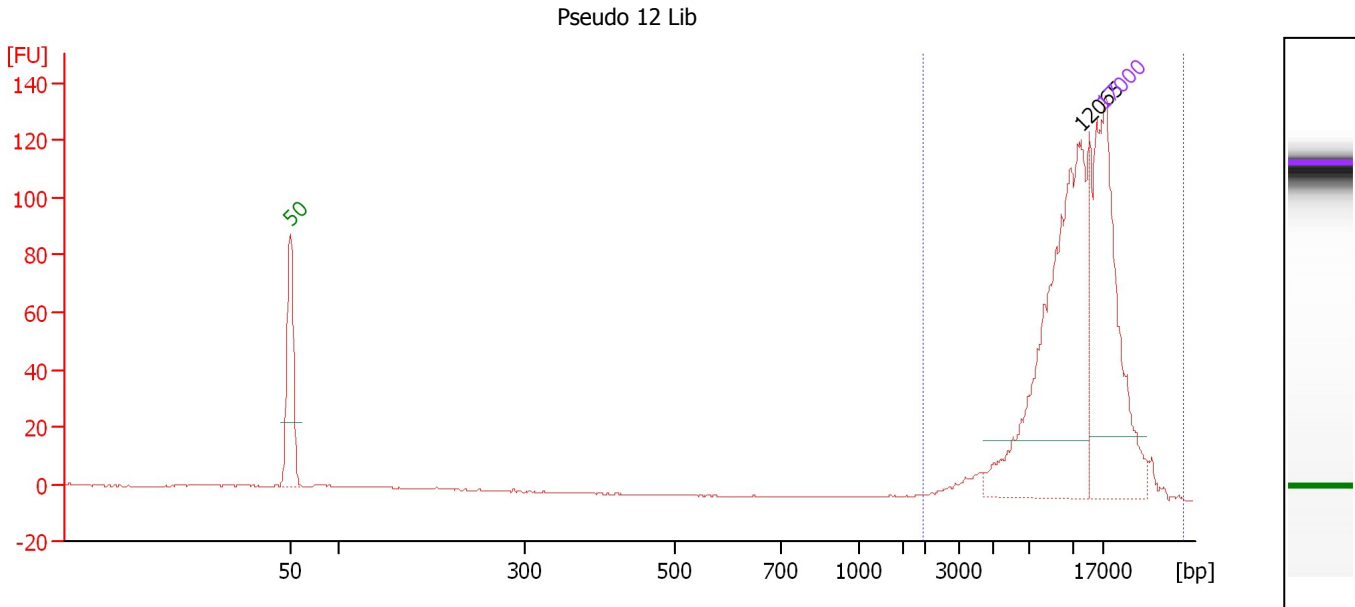
Region table for sample 4 : Pseudo 9 Lib

From [bp]	To [bp]	Average Size [bp]	Conc. [ng/μl]	Area	% of Total	Size distribution in CV [%]	Color
1,487	30,102	11,436	12.59	435.6	89	42.9	Blue

Assay Class: DNA 12000
 Data Path: C:\...ents and Settings\Bioanalyzer\2015-01-13\2015-01-13_001.xad

Created: 1/13/2015 1:05:52 PM
 Modified: 1/13/2015 1:39:49 PM

Electropherogram Summary Continued ...



Overall Results for sample 5 : Pseudo 12 Lib

Number of peaks found: 1 Area: 444.8

Peak table for sample 5 : Pseudo 12 Lib

Peak	Size [bp]	Conc. [ng/μl]	Molarity [nmol/l]	Observations
1	50	8.30	251.5	Lower Marker
2	12,065	6.14	0.8	
3	17,000	4.20	0.4	Upper Marker

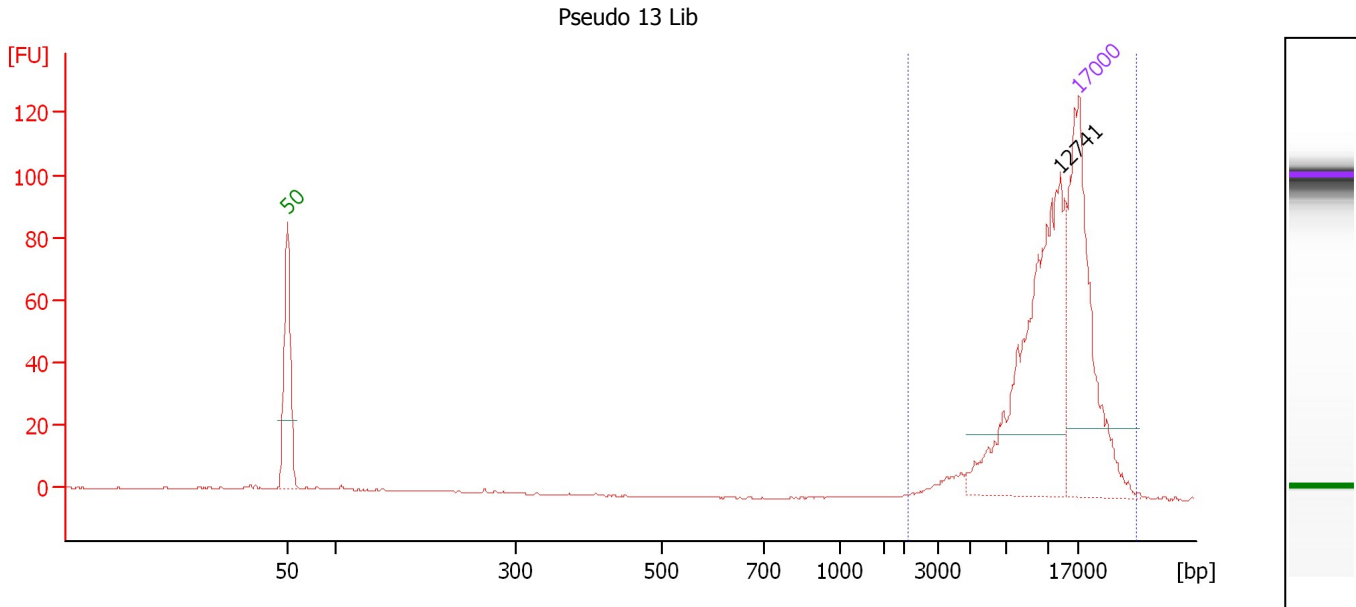
Region table for sample 5 : Pseudo 12 Lib

From [bp]	To [bp]	Average Size [bp]	Conc. [ng/μl]	Area	% of Total	Size distribution in CV [%]	Color
1,980	34,806	13,048	6.60	444.8	98	41.1	Blue

Assay Class: DNA 12000
 Data Path: C:\...ents and Settings\Bioanalyzer\2015-01-13\2015-01-13_001.xad

Created: 1/13/2015 1:05:52 PM
 Modified: 1/13/2015 1:39:49 PM

Electropherogram Summary Continued ...



Overall Results for sample 6 : Pseudo 13 Lib

Number of peaks found: 1 Area 1: 333.1

Peak table for sample 6 : Pseudo 13 Lib

Peak	Size [bp]	Conc. [ng/μl]	Molarity [nmol/l]	Observations
1	50	8.30	251.5	Lower Marker
2	12,741	6.00	0.7	
3	17,000	4.20	0.4	Upper Marker

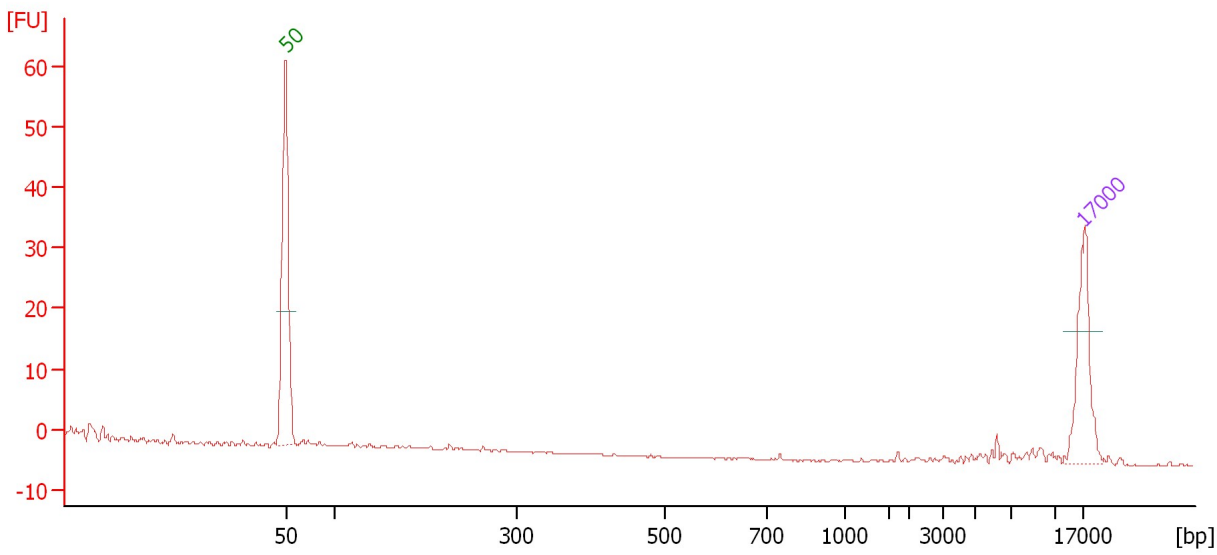
Region table for sample 6 : Pseudo 13 Lib

From [bp]	To [bp]	Average Size [bp]	Conc. [ng/μl]	Area	% of Total	Size distribution in CV [%]	Color
2,096	30,468	13,161	6.27	333.1	98	39.2	Blue

Assay Class: DNA 12000
Data Path: C:\...ents and Settings\Bioanalyzer\2015-01-13\2015-01-13_001.xad

Created: 1/13/2015 1:05:52 PM
Modified: 1/13/2015 1:39:49 PM

Electropherogram Summary Continued ...



Overall Results for sample 7 :

Number of peaks found: 0

Peak table for sample 7 :

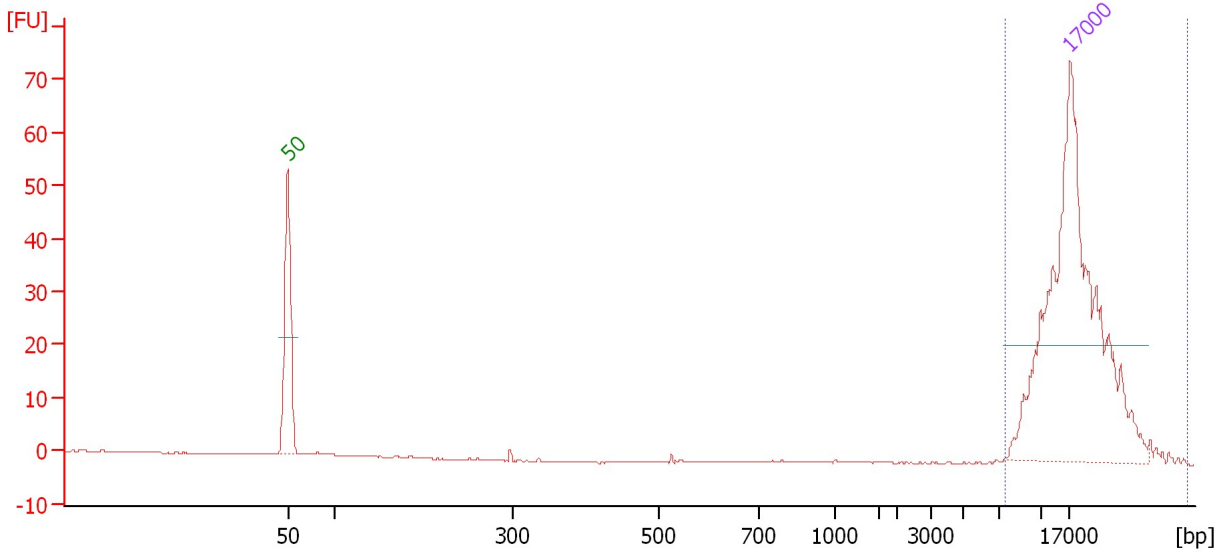
Peak	Size [bp]	Conc. [ng/μl]	Molarity [nmol/l]	Observations
1	50	8.30	251.5	Lower Marker
2	17,000	4.20	0.4	Upper Marker

Assay Class: DNA 12000
 Data Path: C:\...ents and Settings\Bioanalyzer\2015-01-13\2015-01-13_001.xad

Created: 1/13/2015 1:05:52 PM
 Modified: 1/13/2015 1:39:49 PM

Electropherogram Summary Continued ...

AM560-2 8KB-Cut Lib [CTAB]



Overall Results for sample 8 : AM560-2 8KB-Cut Lib

Number of peaks found: 0 Area 1: 5.3

Peak table for sample 8 : AM560-2 8KB-Cut Lib

Peak	Size [bp]	Conc. [ng/µl]	Molarity [nmol/l]	Observations
1	50	8.30	251.5	Lower Marker
2	17,000	4.20	0.4	Upper Marker

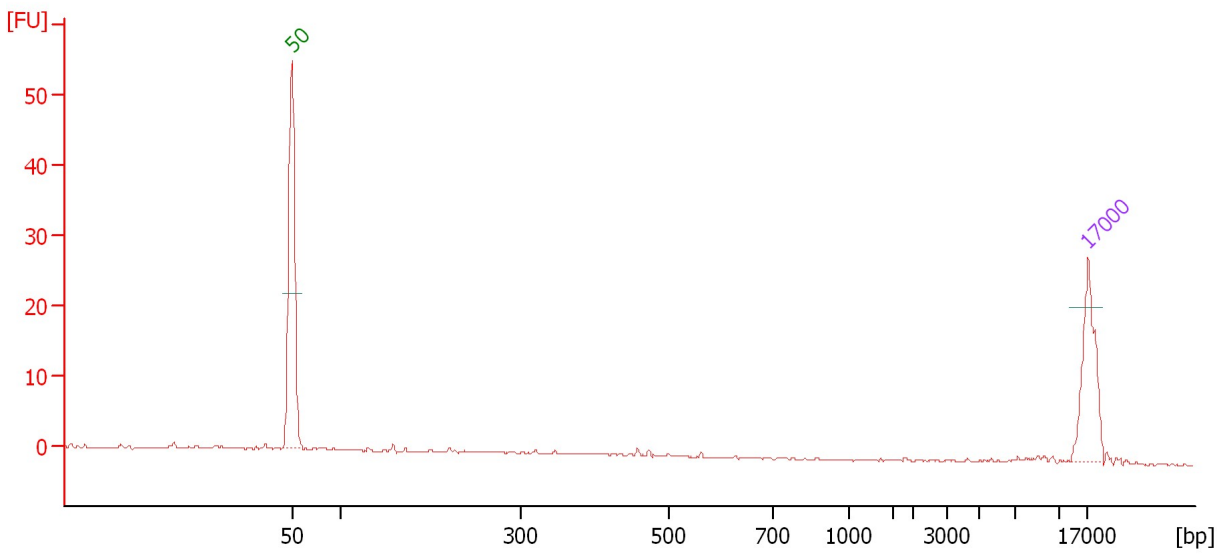
Region table for sample 8 : AM560-2 8KB-Cut Lib

From [bp]	To [bp]	Average Size [bp]	Conc. [ng/µl]	Area	% of Total	Size distribution in CV [%]	Color
7,546	44,309	18,680	0.09	5.3	77	35.6	Blue

Assay Class: DNA 12000
Data Path: C:\...ents and Settings\Bioanalyzer\2015-01-13\2015-01-13_001.xad

Created: 1/13/2015 1:05:52 PM
Modified: 1/13/2015 1:39:49 PM

Electropherogram Summary Continued ...



Overall Results for sample 9 :

Number of peaks found: 0

Peak table for sample 9 :

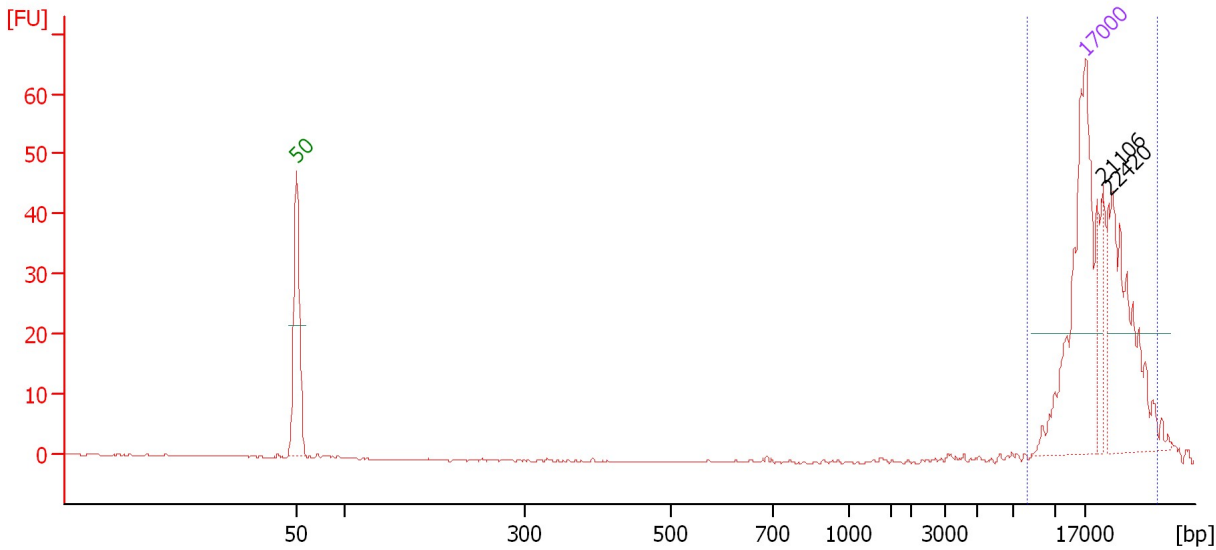
Peak	Size [bp]	Conc. [ng/μl]	Molarity [nmol/l]	Observations
1	50	8.30	251.5	Lower Marker
2	17,000	4.20	0.4	Upper Marker

Assay Class: DNA 12000
 Data Path: C:\...ents and Settings\Bioanalyzer\2015-01-13\2015-01-13_001.xad

Created: 1/13/2015 1:05:52 PM
 Modified: 1/13/2015 1:39:49 PM

Electropherogram Summary Continued ...

AM560- 2 10kb-Cut Lib [CsCl]



Overall Results for sample 10 : AM560- 2 10kb-Cut Lib

Number of peaks found: 0 Area: 121.5

Peak table for sample 10 : AM560- 2 10kb-Cut Lib

Peak	Size [bp]	Conc. [ng/μl]	Molarity [nmol/l]	Observations
1	50	8.30	251.5	Lower Marker
2	17,000	4.20	0.4	Upper Marker
3	21,106	0.00	0.0	
4	22,420	0.00	0.0	

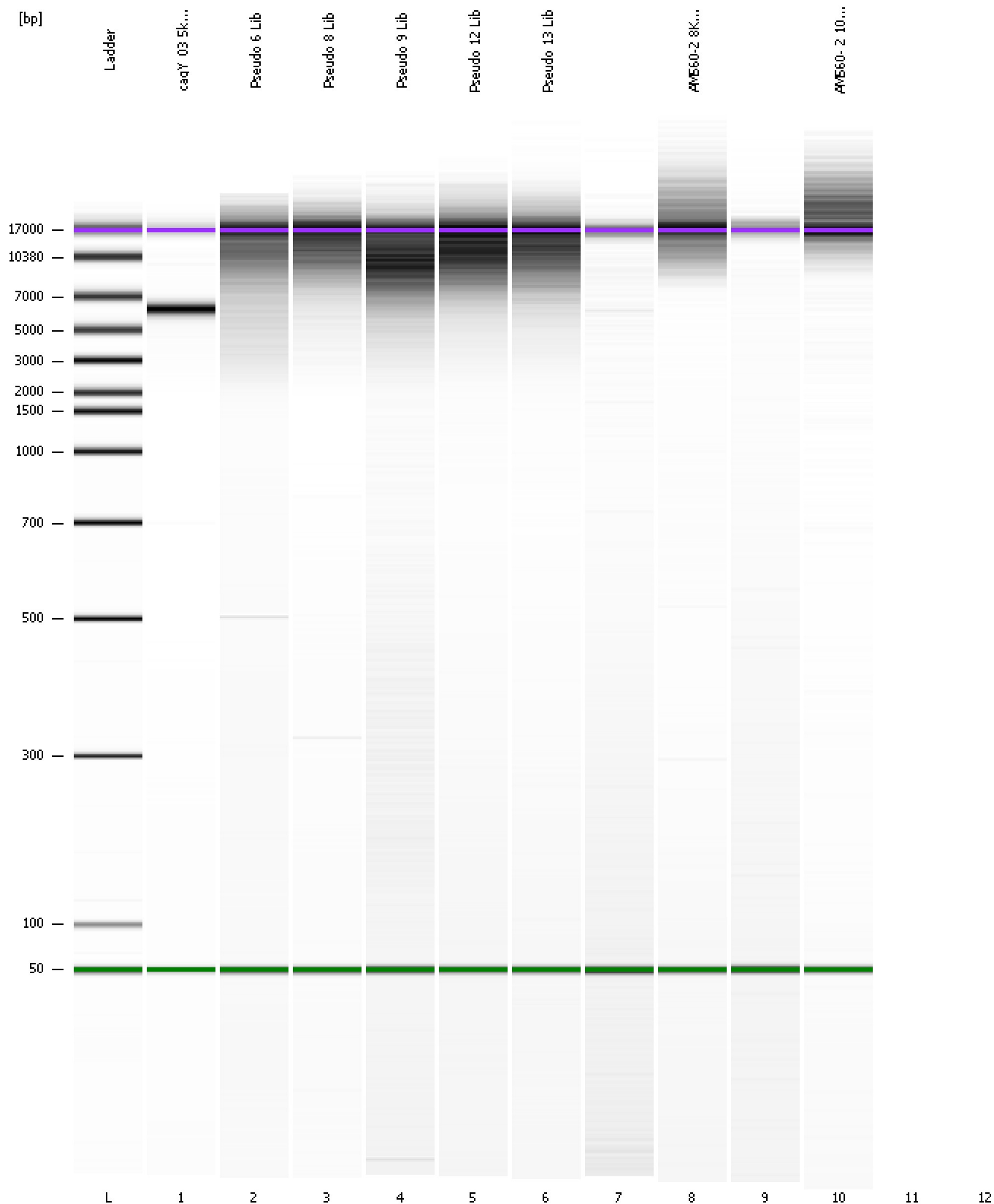
Region table for sample 10 : AM560- 2 10kb-Cut Lib

From [bp]	To [bp]	Average Size [bp]	Conc. [ng/μl]	Area	% of Total	Size distribution in CV [%]	Color
8,098	33,721	20,304	4.62	121.5	91	28.0	Blue

Assay Class: DNA 12000
Data Path: C:\...ents and Settings\Bioanalyzer\2015-01-13\2015-01-13_001.xad

Created: 1/13/2015 1:05:52 PM
Modified: 1/13/2015 1:39:49 PM

Gel Image



Assay Class: DNA 12000
Data Path: C:\...ents and Settings\Bioanalyzer\2015-01-13\2015-01-13_001.xad

Created: 1/13/2015 1:05:52 PM
Modified: 1/13/2015 1:39:49 PM

Invalid Samples

Sample 11 has not been run, no results available.

Sample 12 has not been run, no results available.

Assay Class: DNA 12000
 Data Path: C:\...ents and Settings\Bioanalyzer\2015-01-13\2015-01-13_001.xad

Created: 1/13/2015 1:05:52 PM
 Modified: 1/13/2015 1:39:49 PM

Run Logbook

Description	Number	Source	Category	Sub Category	Time	Time Zone	User	Host
Run ended on port 1 (Number of wells acquired: 11)		Instrument	Run		1/13/2015 1:36:38 PM	(GMT --08:00) Pacific Standard Time	UC Davis	D8XSMGH1
Run started on port 1 (File: C:\Documents and Settings\Bioanalyzer\2015-01-13\2015-01-13_001.xad)		Instrument	Run		1/13/2015 1:05:57 PM	(GMT --08:00) Pacific Standard Time	UC Davis	D8XSMGH1
Product Number : G2938B		Instrument	Run		1/13/2015 1:05:57 PM	(GMT --08:00) Pacific Standard Time	UC Davis	D8XSMGH1
Name :		Instrument	Run		1/13/2015 1:05:57 PM	(GMT --08:00) Pacific Standard Time	UC Davis	D8XSMGH1
Vendor : Agilent Technologies		Instrument	Run		1/13/2015 1:05:57 PM	(GMT --08:00) Pacific Standard Time	UC Davis	D8XSMGH1
Serial# : DE13701086		Instrument	Run		1/13/2015 1:05:57 PM	(GMT --08:00) Pacific Standard Time	UC Davis	D8XSMGH1
Firmware : C.01.069		Instrument	Run		1/13/2015 1:05:57 PM	(GMT --08:00) Pacific Standard Time	UC Davis	D8XSMGH1
Cartridge : Electrode		Instrument	Run		1/13/2015 1:05:57 PM	(GMT --08:00) Pacific Standard Time	UC Davis	D8XSMGH1