

Assay Class: High Sensitivity DNA Assay
Data Path: C:\...ents and Settings\Bioanalyzer\2015-01-13\2015-01-13_002.xad

Created: 1/13/2015 2:18:16 PM
Modified: 1/13/2015 3:01:16 PM

Electrophoresis File Run Summary

Instrument Information:

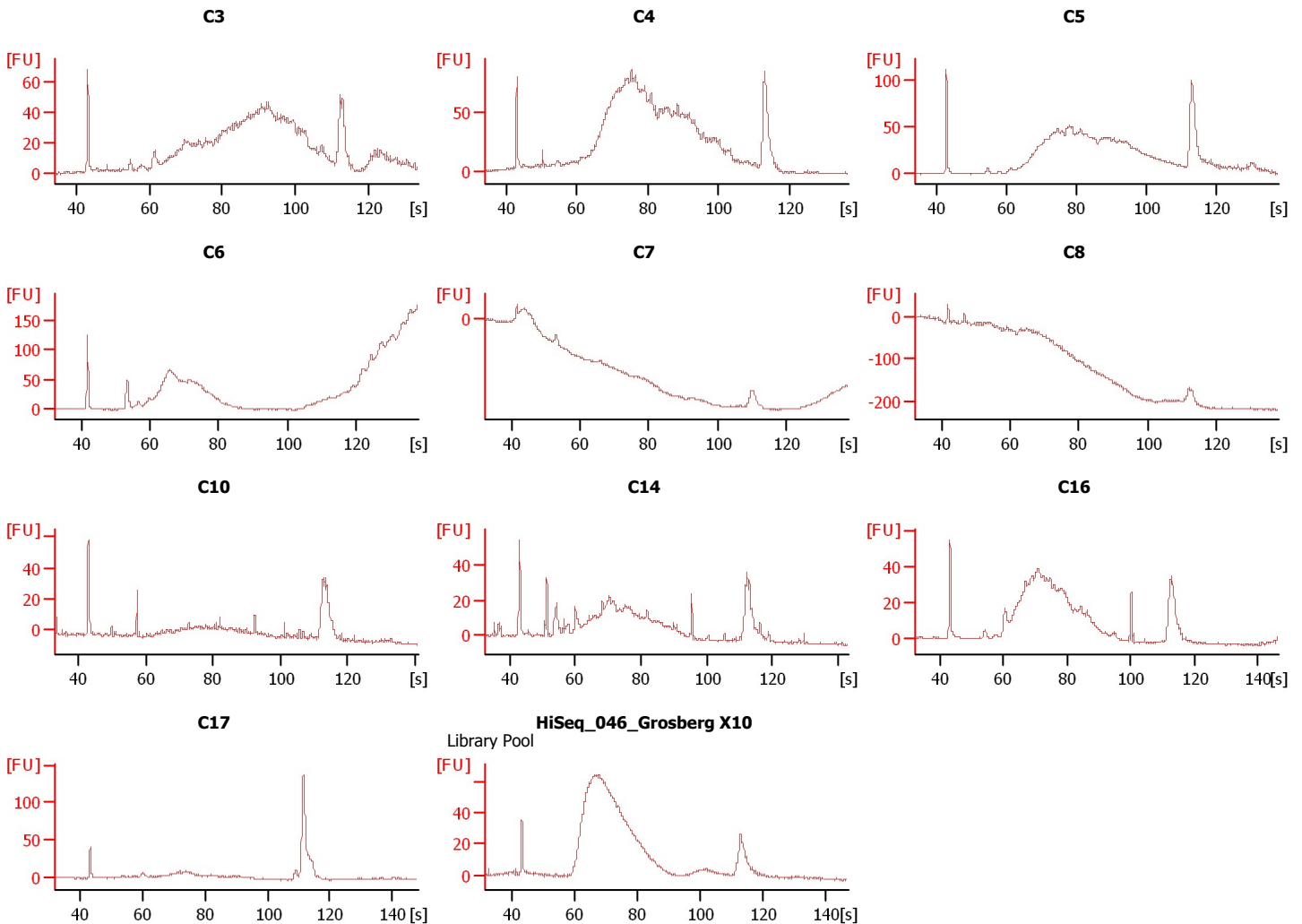
Instrument Name: DE13701086 Firmware: C.01.069
Serial#: DE13701086 Type: G2938B

Assay Information:

Assay Origin Path: C:\Program Files\Agilent\2100 bioanalyzer\2100 expert\assays\dsDNA\High Sensitivity DNA.xsy
Assay Class: High Sensitivity DNA Assay
Version: 1.03
Assay Comments: Copyright © 2003-2010 Agilent Technologies

Chip Information:

Chip Lot #:
Reagent Kit Lot #:
Chip Comments:



Assay Class: High Sensitivity DNA Assay
 Data Path: C:\...ents and Settings\Bioanalyzer\2015-01-13\2015-01-13_002.xad

Created: 1/13/2015 2:18:16 PM
 Modified: 1/13/2015 3:01:16 PM

Electrophoresis File Run Summary (Chip Summary)

Sample Name	Sample Comment	Rest. Digest	Status	Observation	Result Label	Result Color
C3		<input type="checkbox"/>	✓			
C4		<input type="checkbox"/>	✓			
C5		<input type="checkbox"/>	✓			
C6		<input type="checkbox"/>	✓			
C7		<input type="checkbox"/>	✓			
C8		<input type="checkbox"/>	✓			
C10		<input type="checkbox"/>	✓			
C14		<input type="checkbox"/>	✓			
C16		<input type="checkbox"/>	✓			
C17		<input type="checkbox"/>	✓			
HiSeq_046_Grosberg X10	Library Pool	<input type="checkbox"/>	✓			
Ladder		<input type="checkbox"/>	✓			

Chip Lot #

Reagent Kit Lot #

Chip Comments :

Assay Class: High Sensitivity DNA Assay
Data Path: C:\...ents and Settings\Bioanalyzer\2015-01-13\2015-01-13_002.xad

Created: 1/13/2015 2:18:16 PM
Modified: 1/13/2015 3:01:16 PM

Electrophoresis Assay Details

General Analysis Settings

Number of Available Sample and Ladder Wells (Max.) : 12
Minimum Visible Range [s] : 32
Maximum Visible Range [s] : 138
Start Analysis Time Range [s] : 33
End Analysis Time Range [s] : 137.5
Ladder Concentration [pg/μl] : 1950
Uses Standard Area for Ladder Fragments
Lower Marker Concentration [pg/μl] : 125
Upper Marker Concentration [pg/μl] : 75
Used Upper Marker for Quantitation
Standard Curve Fit is Point to Point
Show Data Aligned to Lower and Upper Marker

Integrator Settings

Integration Start Time [s] : 33.05
Integration End Time [s] : 137
Slope Threshold : 0.8
Height Threshold [FU] : 5
Area Threshold : 0.1
Width Threshold [s] : 0.6
Baseline Plateau [s] : 0.5

Filter Settings

Filter Width [s] : 0.5
Polynomial Order : 4

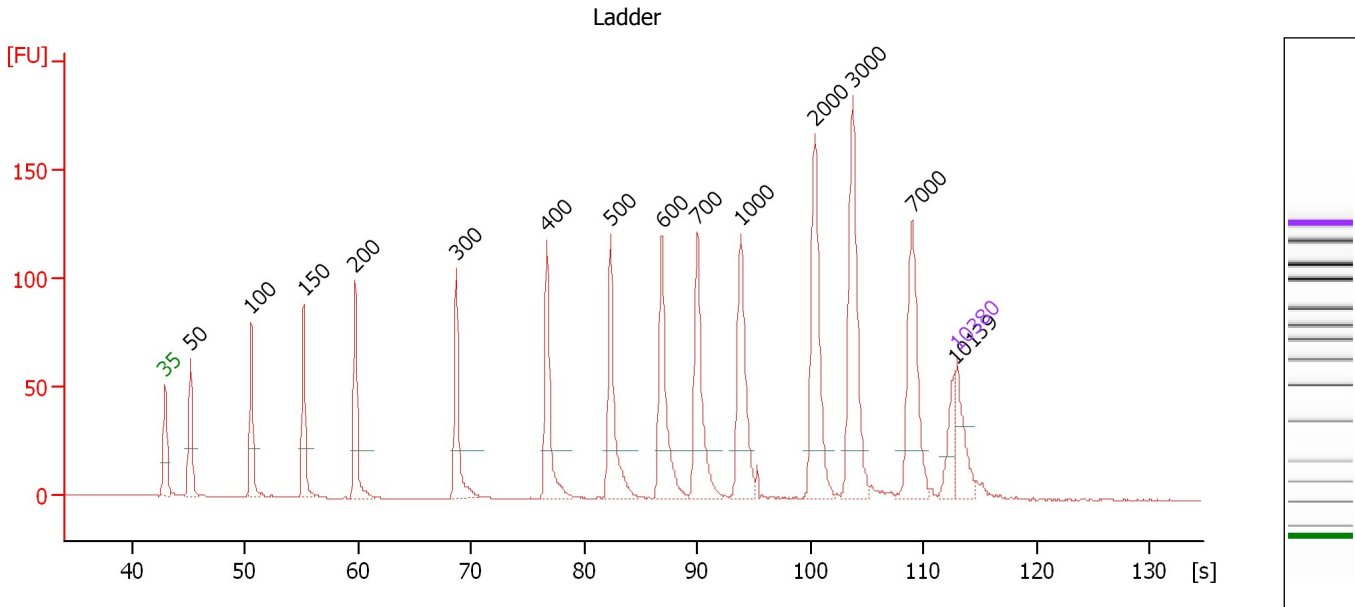
Ladder

Ladder Peak	Size	Area
1	35	160
2	50	210
3	100	208
4	150	221
5	200	242
6	300	270
7	400	305
8	500	306
9	600	336
10	700	321
11	1000	366
12	2000	413
13	3000	411
14	7000	400
15	10380	214

Assay Class: High Sensitivity DNA Assay
 Data Path: C:\...ents and Settings\Bioanalyzer\2015-01-13\2015-01-13_002.xad

Created: 1/13/2015 2:18:16 PM
 Modified: 1/13/2015 3:01:16 PM

Electropherogram Summary



Overall Results for Ladder

Noise: 0.2

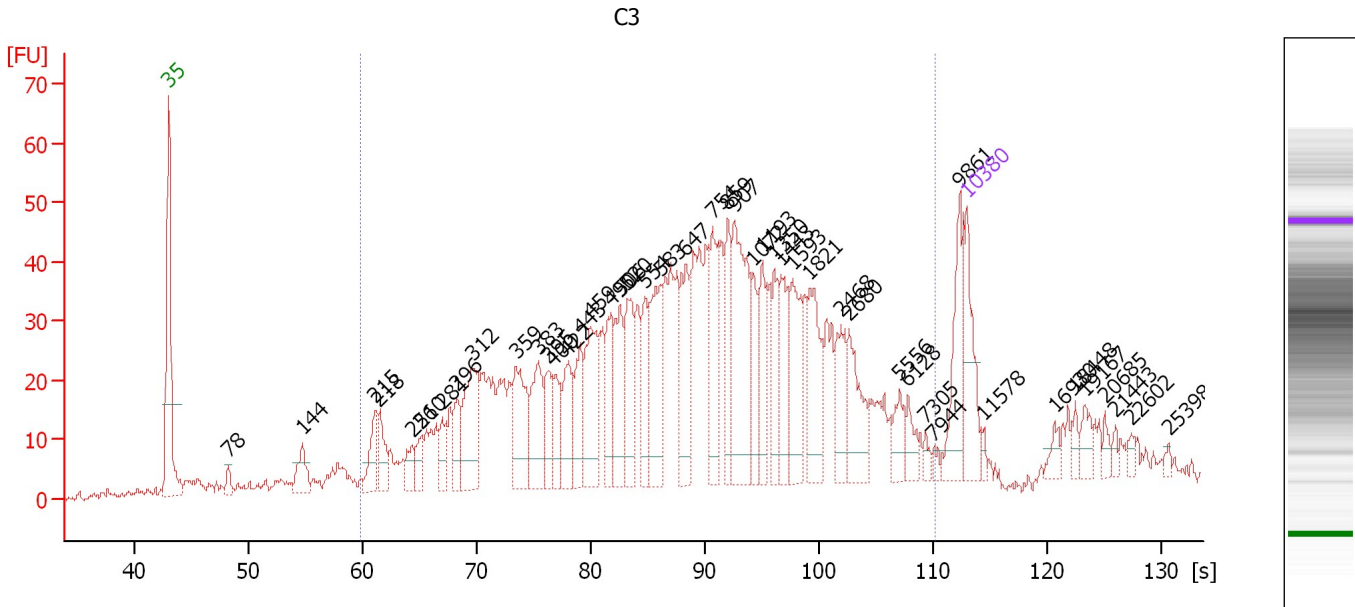
Peak table for Ladder

Peak	Size [bp]	Conc. [pg/μl]	Molarity [pmol/l]	Observations	Aligned Migration Time [s]
1	35	125.00	5,411.3	Lower Marker	43.00
2	50	150.00	4,545.5	Ladder Peak	45.23
3	100	150.00	2,272.7	Ladder Peak	50.59
4	150	150.00	1,515.2	Ladder Peak	55.24
5	200	150.00	1,136.4	Ladder Peak	59.80
6	300	150.00	757.6	Ladder Peak	68.72
7	400	150.00	568.2	Ladder Peak	76.74
8	500	150.00	454.5	Ladder Peak	82.34
9	600	150.00	378.8	Ladder Peak	86.90
10	700	150.00	324.7	Ladder Peak	90.03
11	1,000	150.00	227.3	Ladder Peak	93.83
12	2,000	150.00	113.6	Ladder Peak	100.42
13	3,000	150.00	75.8	Ladder Peak	103.75
14	7,000	150.00	32.5	Ladder Peak	109.01
15	10,139	0.00	0.0		112.72
16	10,380	75.00	10.9	Upper Marker	113.00

Assay Class: High Sensitivity DNA Assay
 Data Path: C:\...ents and Settings\Bioanalyzer\2015-01-13\2015-01-13_002.xad

Created: 1/13/2015 2:18:16 PM
 Modified: 1/13/2015 3:01:16 PM

Electropherogram Summary Continued ...



Overall Results for sample 1 : C3

Number of peaks found: 46 Corr. Area 1: 1,384.3
 Noise: 0.9

Peak table for sample 1 : C3

Peak	Size [bp]	Conc. [pg/μl]	Molarity [pmol/l]	Observations	Aligned Migration Time [s]
1	35	125.00	5,411.3	Lower Marker	43.00
2	78	19.22	373.6		48.23
3	144	52.15	546.9		54.73
4	215	57.81	407.5		61.14
5	218	51.42	357.2		61.42
6	251	36.74	221.4		64.39
7	260	26.79	155.9		65.19
8	281	33.97	183.2		67.02
9	296	48.83	250.2		68.34
10	312	133.82	650.4		69.66
11	359	109.05	459.9		73.48
12	383	95.14	376.0		75.41
13	395	53.62	205.9		76.30
14	400	54.40	206.2		76.73
15	422	73.66	264.2		78.00
16	443	69.05	236.4		79.13
17	459	118.15	389.6		80.07
18	490	72.78	225.1		81.77
19	506	86.56	259.2		82.62
20	520	94.32	274.6		83.28
21	554	59.10	161.8		84.78
22	583	116.17	302.2		86.10
23	647	93.93	220.0		88.36
24	754	89.30	179.4		90.72
25	859	70.32	124.1		92.04

Assay Class: High Sensitivity DNA Assay
 Data Path: C:\...ents and Settings\Bioanalyzer\2015-01-13\2015-01-13_002.xad


Created: 1/13/2015 2:18:16 PM
 Modified: 1/13/2015 3:01:16 PM

Electropherogram Summary Continued ...

... Peak table for sample 1 : C3

Peak	Size [bp]	Conc. [pg/μl]	Molarity [pmol/l]	Observations	Aligned Migration Time [s]
26	907	177.34	296.3		92.65
27	1,072	51.05	72.2		94.30
28	1,193	58.70	74.6		95.10
29	1,350	48.74	54.7		96.14
30	1,443	69.36	72.8		96.75
31	1,593	81.25	77.3		97.74
32	1,821	84.76	70.5		99.24
33	2,468	50.16	30.8		101.98
34	2,680	64.81	36.6		102.68
35	5,556	30.70	8.4		107.11
36	6,128	21.71	5.4		107.87
37	7,305	8.63	1.8		109.37
38	7,944	6.06	1.2		110.13
39	9,861	81.11	12.5		112.39
40	10,380	75.00	10.9	Upper Marker	113.00
41	11,578	0.00	0.0		114.41
42	16,930	0.00	0.0		120.73
43	18,448	0.00	0.0		122.52
44	19,167	0.00	0.0		123.36
45	20,685	0.00	0.0		125.15
46	21,443	0.00	0.0		126.05
47	22,602	0.00	0.0		127.41
48	25,398	0.00	0.0		130.71

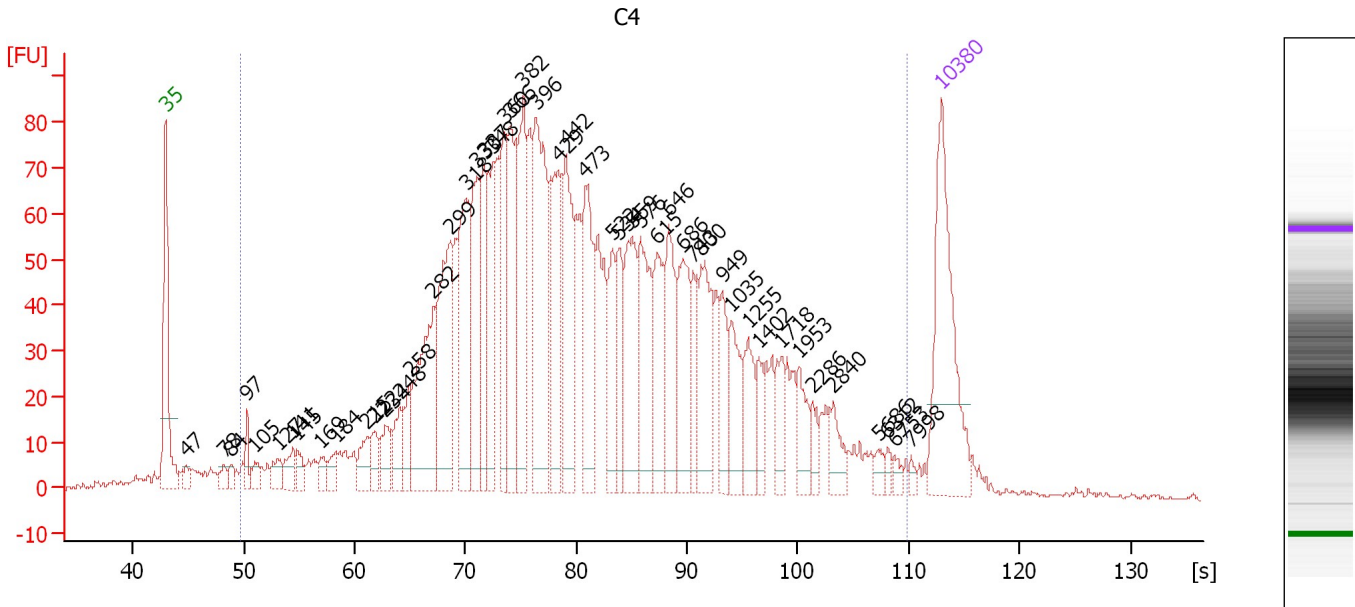
Region table for sample 1 : C3

From [bp]	Average Size [bp]	To [bp]	Corr. Area	% of Total	Size distribution in CV [%]	Conc. [pg/μl]	Molarity [pmol/l]	Color
200	1,131	8,104	1,384.3	87	100.0	3,497.05	10,140.1	

Assay Class: High Sensitivity DNA Assay
 Data Path: C:\...ents and Settings\Bioanalyzer\2015-01-13\2015-01-13_002.xad

Created: 1/13/2015 2:18:16 PM
 Modified: 1/13/2015 3:01:16 PM

Electropherogram Summary Continued ...



Overall Results for sample 2 : C4

Number of peaks found: 49 Corr. Area 1: 2,730.5
 Noise: 0.7

Peak table for sample 2 : C4

Peak	Size [bp]	Conc. [pg/μl]	Molarity [pmol/l]	Observations	Aligned Migration Time [s]
1	35	125.00	5,411.3	Lower Marker	43.00
2	47	7.42	237.2		44.84
3	78	8.25	160.3		48.23
4	84	7.70	139.1		48.86
5	97	12.88	200.4		50.31
6	105	11.51	166.4		51.04
7	127	13.64	163.1		53.08
8	141	16.61	178.1		54.43
9	145	12.09	126.0		54.82
10	169	10.83	97.2		56.95
11	184	11.30	93.2		58.31
12	215	19.00	133.7		61.17
13	222	14.05	95.7		61.80
14	234	19.07	123.6		62.81
15	248	20.29	123.7		64.12
16	258	21.35	125.3		64.99
17	282	94.85	509.4		67.12
18	299	95.79	484.6		68.67
19	318	84.89	405.1		70.13
20	330	70.27	323.0		71.10
21	337	55.93	251.6		71.68
22	348	55.37	241.3		72.55
23	360	54.22	227.9		73.57
24	366	75.12	310.6		74.05
25	382	82.70	328.4		75.26

Assay Class: High Sensitivity DNA Assay
 Data Path: C:\...ents and Settings\Bioanalyzer\2015-01-13\2015-01-13_002.xad


Created: 1/13/2015 2:18:16 PM
 Modified: 1/13/2015 3:01:16 PM

Electropherogram Summary Continued ...

... Peak table for sample 2 : C4

Peak	Size [bp]	Conc. [pg/μl]	Molarity [pmol/l]	Observations	Aligned Migration Time [s]
26	396	118.14	452.0		76.43
27	429	63.93	225.8		78.36
28	442	80.00	274.3		79.09
29	473	68.80	220.4		80.83
30	522	36.01	104.5		83.35
31	534	31.71	90.0		83.89
32	559	60.87	164.9		85.05
33	576	56.66	148.9		85.82
34	615	45.84	112.9		87.37
35	646	45.93	107.7		88.34
36	686	51.07	112.7		89.60
37	743	23.97	48.9		90.57
38	800	52.91	100.2		91.30
39	949	23.93	38.2		93.19
40	1,035	30.02	43.9		94.06
41	1,255	22.48	27.1		95.51
42	1,402	13.18	14.2		96.48
43	1,718	15.19	13.4		98.56
44	1,953	16.10	12.5		100.11
45	2,286	7.98	5.3		101.37
46	2,840	13.23	7.1		103.21
47	5,686	4.95	1.3		107.28
48	6,312	3.18	0.8		108.11
49	6,753	3.67	0.8		108.69
50	7,998	2.61	0.5		110.19
51	10,380	75.00	10.9	Upper Marker	113.00

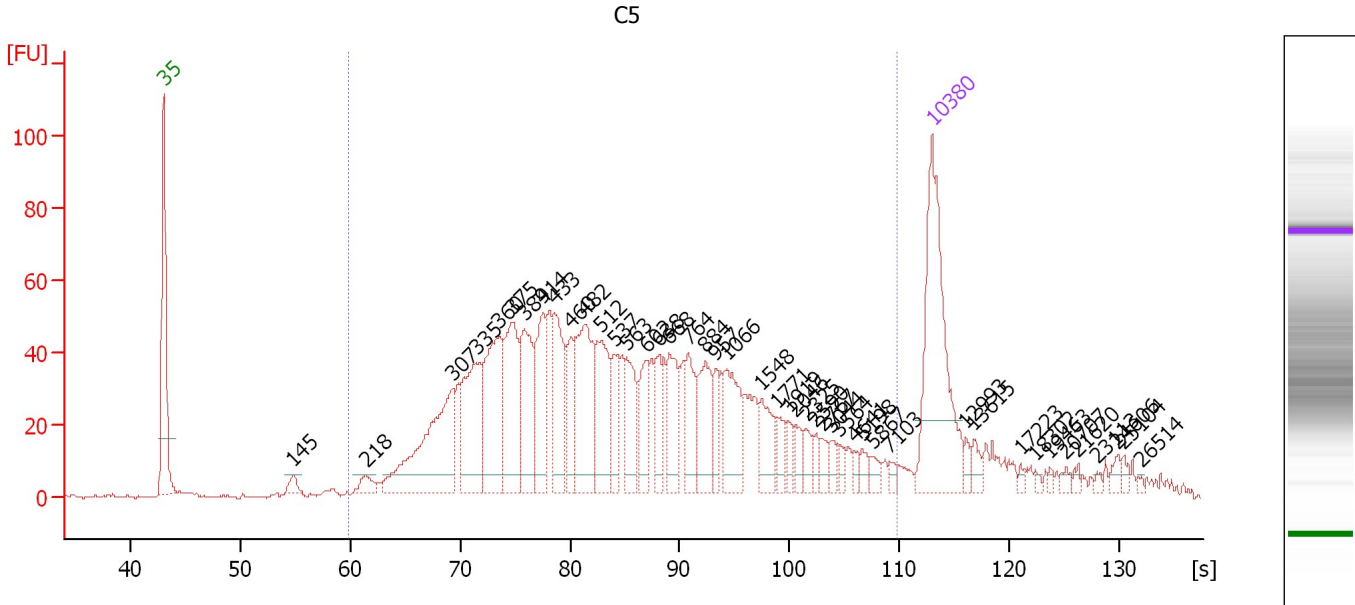
Region table for sample 2 : C4

From [bp]	Average Size [bp]	To [bp]	Corr. Area	% of Total	Size distribution in CV [%]	Conc. [pg/μl]	Molarity [pmol/l]	Color
92	733	7,776	2,730.5	96	100.0	2,089.45	8,398.5	

Assay Class: High Sensitivity DNA Assay
 Data Path: C:\...ents and Settings\Bioanalyzer\2015-01-13\2015-01-13_002.xad

Created: 1/13/2015 2:18:16 PM
 Modified: 1/13/2015 3:01:16 PM

Electropherogram Summary Continued ...



Overall Results for sample 3 : C5

Number of peaks found: 45 Corr. Area 1: 1,743.0
 Noise: 0.4

Peak table for sample 3 : C5

Peak	Size [bp]	Conc. [pg/μl]	Molarity [pmol/l]	Observations	Aligned Migration Time [s]
1	35	125.00	5,411.3	Lower Marker	43.00
2	145	6.56	68.5		54.79
3	218	8.20	57.0		61.39
4	307	93.07	458.7		69.32
5	335	65.30	295.4		71.52
6	360	66.66	280.2		73.57
7	375	56.28	227.7		74.70
8	389	45.61	177.6		75.87
9	414	39.66	145.1		77.54
10	433	38.72	135.6		78.56
11	460	23.74	78.1		80.13
12	482	63.43	199.3		81.35
13	512	42.14	124.8		82.87
14	537	19.64	55.4		84.04
15	563	25.44	68.5		85.22
16	602	21.78	54.8		86.98
17	638	17.76	42.1		88.10
18	668	27.98	63.5		89.03
19	764	22.71	45.0		90.84
20	884	27.30	46.8		92.36
21	957	11.94	18.9		93.29
22	1,066	30.60	43.5		94.26
23	1,548	16.93	16.6		97.44
24	1,771	7.07	6.1		98.91
25	1,919	6.10	4.8		99.89

Assay Class: High Sensitivity DNA Assay
 Data Path: C:\...ents and Settings\Bioanalyzer\2015-01-13\2015-01-13_002.xad


Created: 1/13/2015 2:18:16 PM
 Modified: 1/13/2015 3:01:16 PM

Electropherogram Summary Continued ...

... Peak table for sample 3 : C5

Peak	Size [bp]	Conc. [pg/μl]	Molarity [pmol/l]	Observations	Aligned Migration Time [s]
26	2,046	6.40	4.7		100.58
27	2,325	6.29	4.1		101.50
28	2,590	4.43	2.6		102.39
29	2,767	5.34	2.9		102.97
30	3,044	4.51	2.2		103.80
31	3,564	3.57	1.5		104.49
32	4,641	3.12	1.0		105.91
33	5,198	3.97	1.2		106.64
34	5,867	4.56	1.2		107.52
35	7,103	2.56	0.5		109.14
36	10,380	75.00	10.9	Upper Marker	113.00
37	12,993	0.00	0.0		116.08
38	13,615	0.00	0.0		116.82
39	17,223	0.00	0.0		121.07
40	18,302	0.00	0.0		122.34
41	19,463	0.00	0.0		123.71
42	20,707	0.00	0.0		125.18
43	21,620	0.00	0.0		126.26
44	23,113	0.00	0.0		128.02
45	24,606	0.00	0.0		129.78
46	25,104	0.00	0.0		130.37
47	26,514	0.00	0.0		132.03

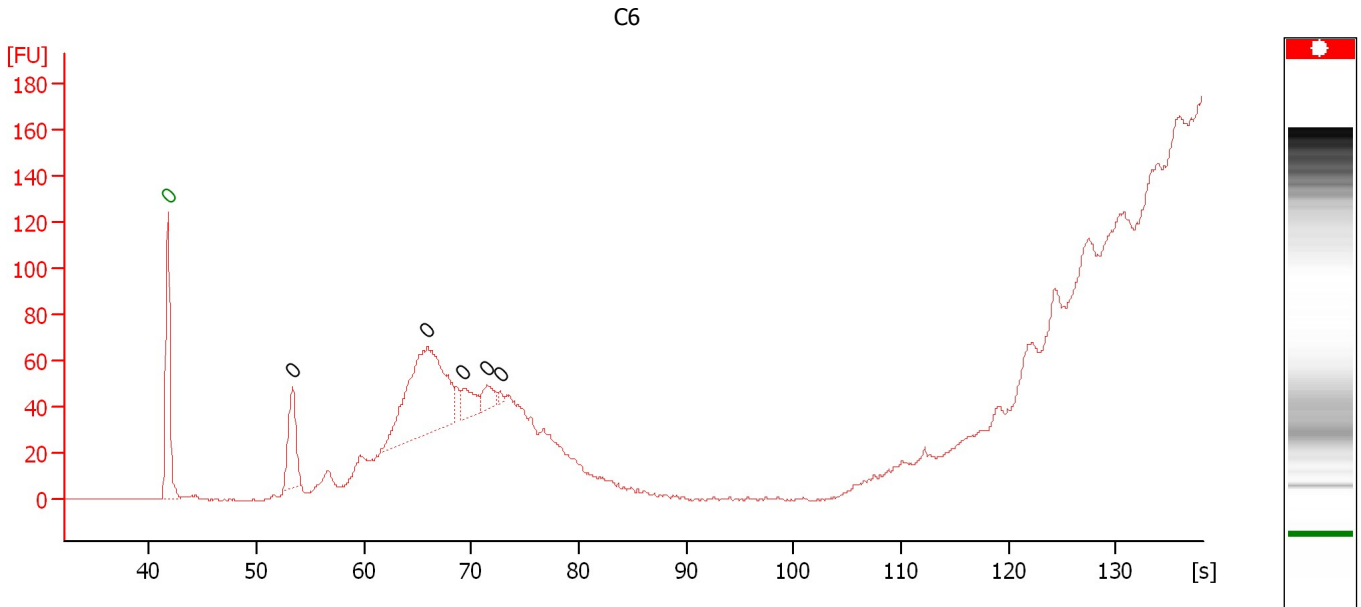
Region table for sample 3 : C5

From [bp]	Average Size [bp]	To [bp]	Corr. Area	% of Total	Size distribution in CV [%]	Conc. [pg/μl]	Molarity [pmol/l]	Color
200	936	7,661	1,743.0	91	100.0	1,004.55	3,205.8	

Assay Class: High Sensitivity DNA Assay
Data Path: C:\...ents and Settings\Bioanalyzer\2015-01-13\2015-01-13_002.xad

Created: 1/13/2015 2:18:16 PM
Modified: 1/13/2015 3:01:16 PM

Electropherogram Summary Continued ...



Overall Results for sample 4 : C6

Number of peaks found: 5 Noise: 0.3

Peak table for sample 4 : C6

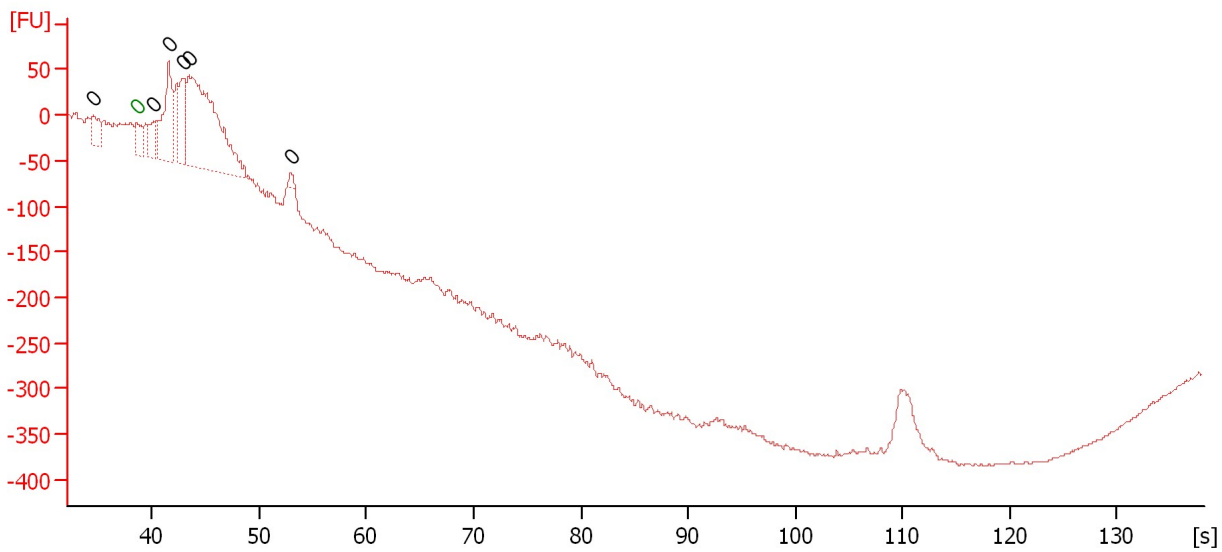
Peak	Size [bp]	Conc. [pg/μl]	Molarity [pmol/l]	Observations	Aligned Migration Time [s]
1	0	0.00	0.0	Lower Marker	41.75
2	0	0.00	0.0		53.35
3	0	0.00	0.0		65.90
4	0	0.00	0.0		69.25
5	0	0.00	0.0		71.50
6	0	0.00	0.0		72.65

Assay Class: High Sensitivity DNA Assay
 Data Path: C:\...ents and Settings\Bioanalyzer\2015-01-13\2015-01-13_002.xad

Created: 1/13/2015 2:18:16 PM
 Modified: 1/13/2015 3:01:16 PM

Electropherogram Summary Continued ...

C7



Overall Results for sample 5 : C7

Number of peaks found: 6 Noise: 1.6

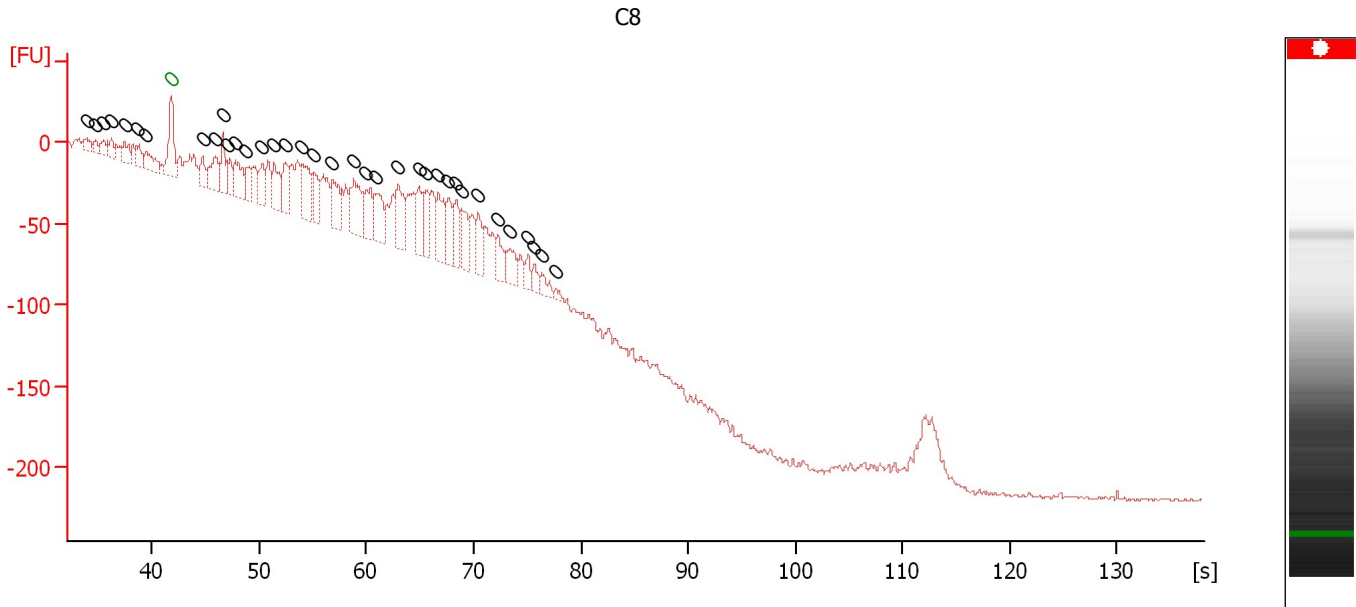
Peak table for sample 5 : C7

Peak	Size [bp]	Conc. [pg/μl]	Molarity [pmol/l]	Observations	Aligned Migration Time [s]
1	0	0.00	0.0		34.55
2	0	0.00	0.0	Lower Marker	38.55
3	0	0.00	0.0		40.20
4	0	0.00	0.0		41.55
5	0	0.00	0.0		42.95
6	0	0.00	0.0		43.50
7	0	0.00	0.0		53.00

Assay Class: High Sensitivity DNA Assay
 Data Path: C:\...ents and Settings\Bioanalyzer\2015-01-13\2015-01-13_002.xad

Created: 1/13/2015 2:18:16 PM
 Modified: 1/13/2015 3:01:16 PM

Electropherogram Summary Continued ...



Overall Results for sample 6 : C8

Number of peaks found: 36 Noise: 1.1

Peak table for sample 6 : C8

Peak	Size [bp]	Conc. [pg/μl]	Molarity [pmol/l]	Observations	Aligned Migration Time [s]
1	0	0.00	0.0		33.95
2	0	0.00	0.0		34.70
3	0	0.00	0.0		35.45
4	0	0.00	0.0		36.20
5	0	0.00	0.0		37.45
6	0	0.00	0.0		38.55
7	0	0.00	0.0		39.45
8	0	0.00	0.0	Lower Marker	41.80
9	0	0.00	0.0		44.70
10	0	0.00	0.0		45.90
11	0	0.00	0.0		46.60
12	0	0.00	0.0		47.00
13	0	0.00	0.0		47.75
14	0	0.00	0.0		48.80
15	0	0.00	0.0		50.25
16	0	0.00	0.0		51.40
17	0	0.00	0.0		52.45
18	0	0.00	0.0		53.90
19	0	0.00	0.0		55.15
20	0	0.00	0.0		56.80
21	0	0.00	0.0		58.80
22	0	0.00	0.0		60.00
23	0	0.00	0.0		60.90
24	0	0.00	0.0		62.95
25	0	0.00	0.0		64.90
26	0	0.00	0.0		65.50
27	0	0.00	0.0		66.70

Assay Class: High Sensitivity DNA Assay
Data Path: C:\...ents and Settings\Bioanalyzer\2015-01-13\2015-01-13_002.xad

Created: 1/13/2015 2:18:16 PM
Modified: 1/13/2015 3:01:16 PM

Electropherogram Summary Continued ...

... Peak table for sample 6 :

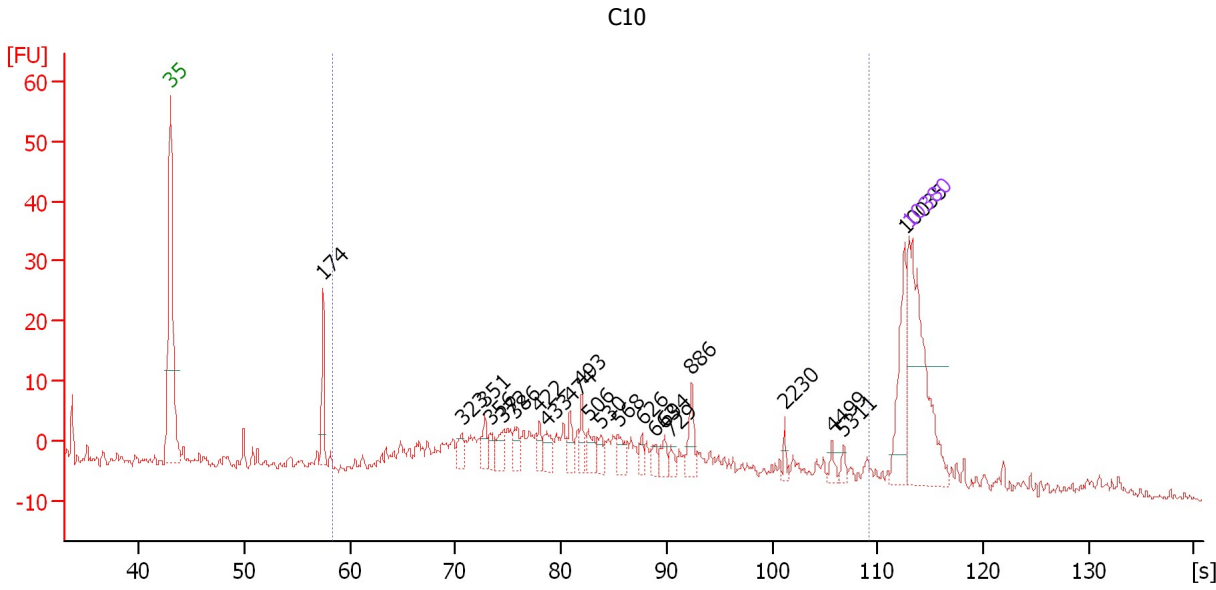
C8

Peak	Size [bp]	Conc. [pg/ μ l]	Molarity [pmol/l]	Observations	Aligned Migration Time [s]
28	0	0.00	0.0		67.65
29	0	0.00	0.0		68.40
30	0	0.00	0.0		68.90
31	0	0.00	0.0		70.45
32	0	0.00	0.0		72.20
33	0	0.00	0.0		73.40
34	0	0.00	0.0		75.05
35	0	0.00	0.0		75.65
36	0	0.00	0.0		76.35
37	0	0.00	0.0		77.60

Assay Class: High Sensitivity DNA Assay
 Data Path: C:\...ents and Settings\Bioanalyzer\2015-01-13\2015-01-13_002.xad

Created: 1/13/2015 2:18:16 PM
 Modified: 1/13/2015 3:01:16 PM

Electropherogram Summary Continued ...



Overall Results for sample 7 : C10

Number of peaks found: 22 Corr. Area 1: 273.8
 Noise: 0.7


Peak table for sample 7 : C10

Peak	Size [bp]	Conc. [pg/μl]	Molarity [pmol/l]	Observations	Aligned Migration Time [s]
1	35	125.00	5,411.3	Lower Marker	43.00
2	174	29.65	257.7		57.46
3	323	9.91	46.4		70.59
4	351	10.60	45.8		72.78
5	356	8.14	34.6		73.24
6	372	10.16	41.4		74.46
7	386	10.77	42.3		75.58
8	422	8.36	30.0		77.97
9	433	11.22	39.3		78.59
10	474	8.95	28.6		80.88
11	493	10.93	33.6		81.95
12	506	11.24	33.7		82.61
13	530	7.11	20.3		83.73
14	568	10.26	27.4		85.46
15	626	5.70	13.8		87.70
16	663	5.74	13.1		88.87
17	694	7.45	16.3		89.84
18	729	4.29	8.9		90.40
19	886	14.03	24.0		92.38
20	2,230	3.22	2.2		101.19
21	4,499	3.85	1.3		105.72
22	5,311	3.14	0.9		106.79
23	10,035	31.32	4.7		112.59
24	10,380	75.00	10.9	Upper Marker	113.00

Assay Class: High Sensitivity DNA Assay
Data Path: C:\...ents and Settings\Bioanalyzer\2015-01-13\2015-01-13_002.xad

Created: 1/13/2015 2:18:16 PM
Modified: 1/13/2015 3:01:16 PM

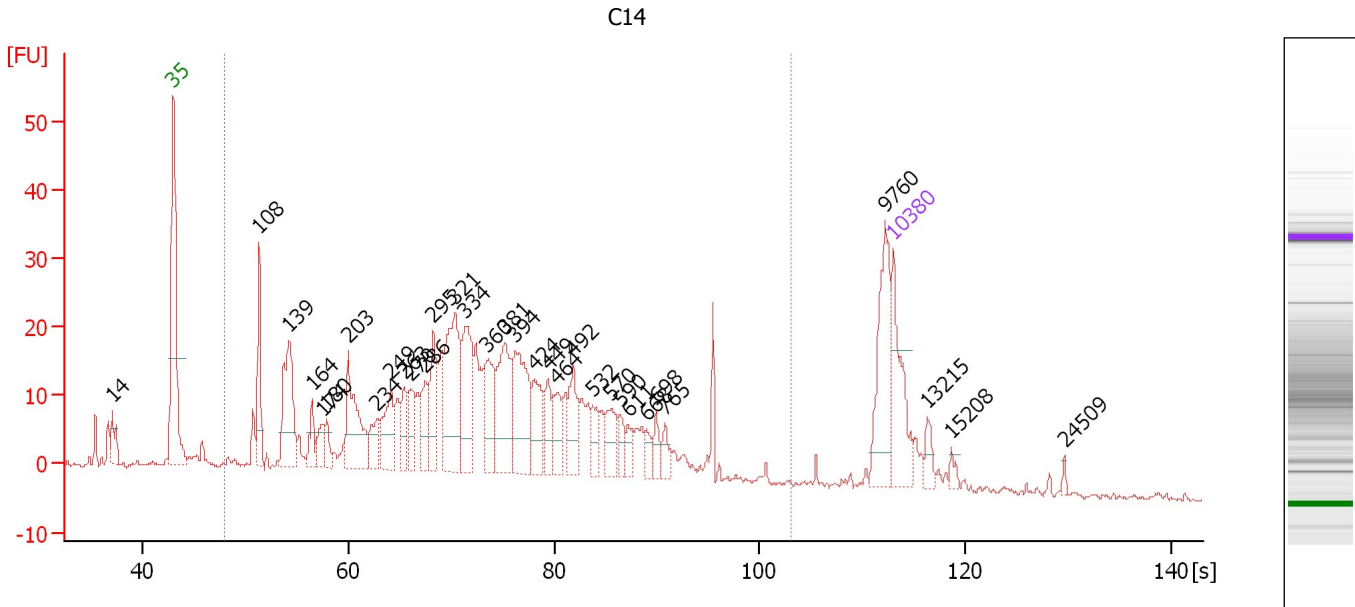
Electropherogram Summary Continued ...**... Region table for sample 7 : C10**

From [bp]	Average Size [bp]	To [bp]	Corr. Area	% of Total	Size distribution in CV [%]	Conc. [pg/μl]	Molarity [pmol/l]	Co lor
183	1,012	7,144	273.8	74	100.0	403.30	1,342.3	

Assay Class: High Sensitivity DNA Assay
 Data Path: C:\...ents and Settings\Bioanalyzer\2015-01-13\2015-01-13_002.xad

Created: 1/13/2015 2:18:16 PM
 Modified: 1/13/2015 3:01:16 PM

Electropherogram Summary Continued ...



Overall Results for sample 8 : C14

Number of peaks found: 33 Corr. Area 1: 672.4
 Noise: 0.6

Peak table for sample 8 : C14

Peak	Size [bp]	Conc. [pg/μl]	Molarity [pmol/l]	Observations	Aligned Migration Time [s]
1	14	0.00	0.0		37.04
2	35	125.00	5,411.3	Lower Marker	43.00
3	108	96.14	1,345.9		51.36
4	139	150.91	1,643.6		54.23
5	164	31.65	293.3		56.48
6	174	32.03	279.1		57.42
7	180	24.21	204.2		57.94
8	203	125.37	937.7		60.03
9	234	39.97	258.6		62.85
10	249	68.24	415.5		64.16
11	263	41.70	240.3		65.41
12	270	42.16	236.2		66.09
13	286	50.13	265.3		67.50
14	295	70.17	360.3		68.28
15	321	162.59	766.9		70.43
16	334	110.74	502.9		71.42
17	360	79.07	333.1		73.51
18	381	110.88	440.8		75.23
19	394	120.93	464.8		76.28
20	424	58.50	208.9		78.10
21	449	35.10	118.5		79.46
22	464	41.28	134.7		80.35
23	492	52.84	162.6		81.92
24	532	25.26	71.9		83.80
25	570	37.83	100.6		85.52

Assay Class: High Sensitivity DNA Assay
 Data Path: C:\...ents and Settings\Bioanalyzer\2015-01-13\2015-01-13_002.xad


Created: 1/13/2015 2:18:16 PM
 Modified: 1/13/2015 3:01:16 PM

Electropherogram Summary Continued ...

... Peak table for sample 8 : C14

Peak	Size [bp]	Conc. [pg/μl]	Molarity [pmol/l]	Observations	Aligned Migration Time [s]
26	590	19.50	50.0		86.46
27	611	16.59	41.1		87.25
28	668	13.93	31.6		89.02
29	698	18.98	41.2		89.96
30	765	17.05	33.8		90.85
31	9,760	96.40	15.0		112.27
32	10,380	75.00	10.9	Upper Marker	113.00
33	13,215	0.00	0.0		116.34
34	15,208	0.00	0.0		118.69
35	24,509	0.00	0.0		129.66

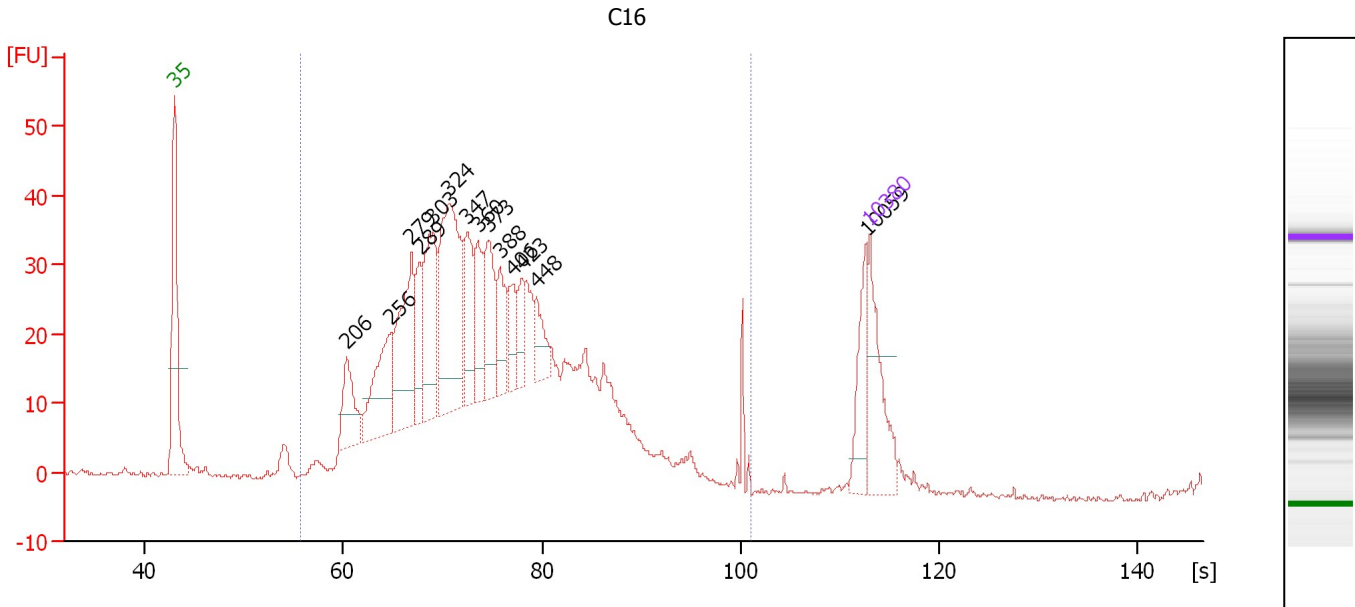
Region table for sample 8 : C14

From [bp]	Average Size [bp]	To [bp]	Corr. Area	% of Total	Size distribution in CV [%]	Conc. [pg/μl]	Molarity [pmol/l]	Color
75	413	2,796	672.4	86	65.9	2,296.86	13,074.6	

Assay Class: High Sensitivity DNA Assay
 Data Path: C:\...ents and Settings\Bioanalyzer\2015-01-13\2015-01-13_002.xad

Created: 1/13/2015 2:18:16 PM
 Modified: 1/13/2015 3:01:16 PM

Electropherogram Summary Continued ...



Overall Results for sample 9 : C16

Number of peaks found: 14 Corr. Area 1: 930.6
 Noise: 0.4

Peak table for sample 9 : C16

Peak	Size [bp]	Conc. [pg/μl]	Molarity [pmol/l]	Observations	Aligned Migration Time [s]
1	35	125.00	5,411.3	Lower Marker	43.00
2	206	77.76	571.5		60.35
3	256	117.63	696.6		64.78
4	279	156.64	851.0		66.84
5	289	57.57	302.2		67.70
6	303	134.03	669.2		69.00
7	324	228.47	1,067.2		70.68
8	347	77.78	340.0		72.46
9	360	63.08	265.4		73.54
10	373	73.63	299.2		74.57
11	388	51.73	201.8		75.81
12	406	38.40	143.4		77.05
13	423	29.43	105.4		78.03
14	448	34.69	117.3		79.43
15	10,059	52.63	7.9		112.62
16	10,380	75.00	10.9	Upper Marker	113.00

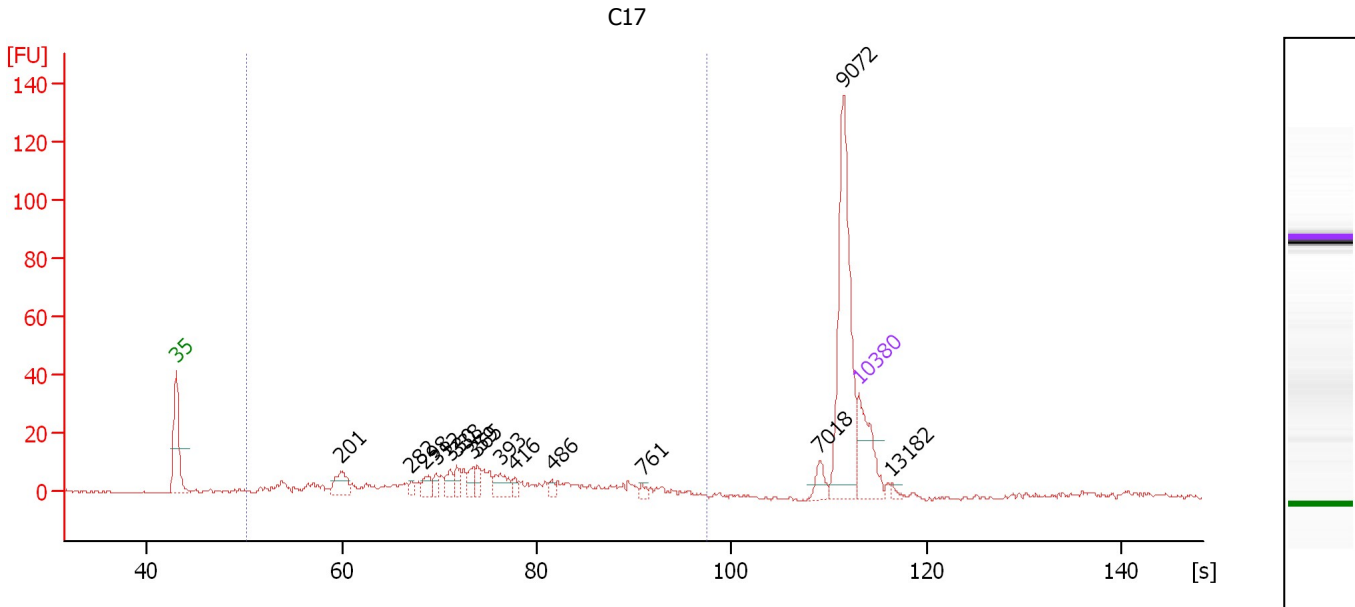
Region table for sample 9 : C16

From [bp]	Average Size [bp]	To [bp]	Corr. Area	% of Total	Size distribution in CV [%]	Conc. [pg/μl]	Molarity [pmol/l]	Color
156	408	2,211	930.6	96	54.4	2,229.93	9,956.8	Blue

Assay Class: High Sensitivity DNA Assay
 Data Path: C:\...ents and Settings\Bioanalyzer\2015-01-13\2015-01-13_002.xad

Created: 1/13/2015 2:18:16 PM
 Modified: 1/13/2015 3:01:16 PM

Electropherogram Summary Continued ...



Overall Results for sample 10 : C17

Number of peaks found: 15 Corr. Area 1: 197.9
 Noise: 0.3

Peak table for sample 10 : C17

Peak	Size [bp]	Conc. [pg/μl]	Molarity [pmol/l]	Observations	Aligned Migration Time [s]
1	35	125.00	5,411.3	Lower Marker	43.00
2	201	49.62	373.6		59.91
3	282	11.30	60.7		67.12
4	298	22.13	112.7		68.50
5	312	15.76	76.6		69.66
6	330	23.65	108.8		71.09
7	338	19.70	88.2		71.80
8	359	18.85	79.6		73.46
9	365	19.61	81.5		73.90
10	393	33.87	130.5		76.21
11	416	11.71	42.6		77.64
12	486	9.31	29.0		81.55
13	761	7.90	15.7		90.80
14	7,018	20.98	4.5		109.03
15	9,072	251.45	42.0		111.46
16	10,380	75.00	10.9	Upper Marker	113.00
17	13,182	0.00	0.0		116.30

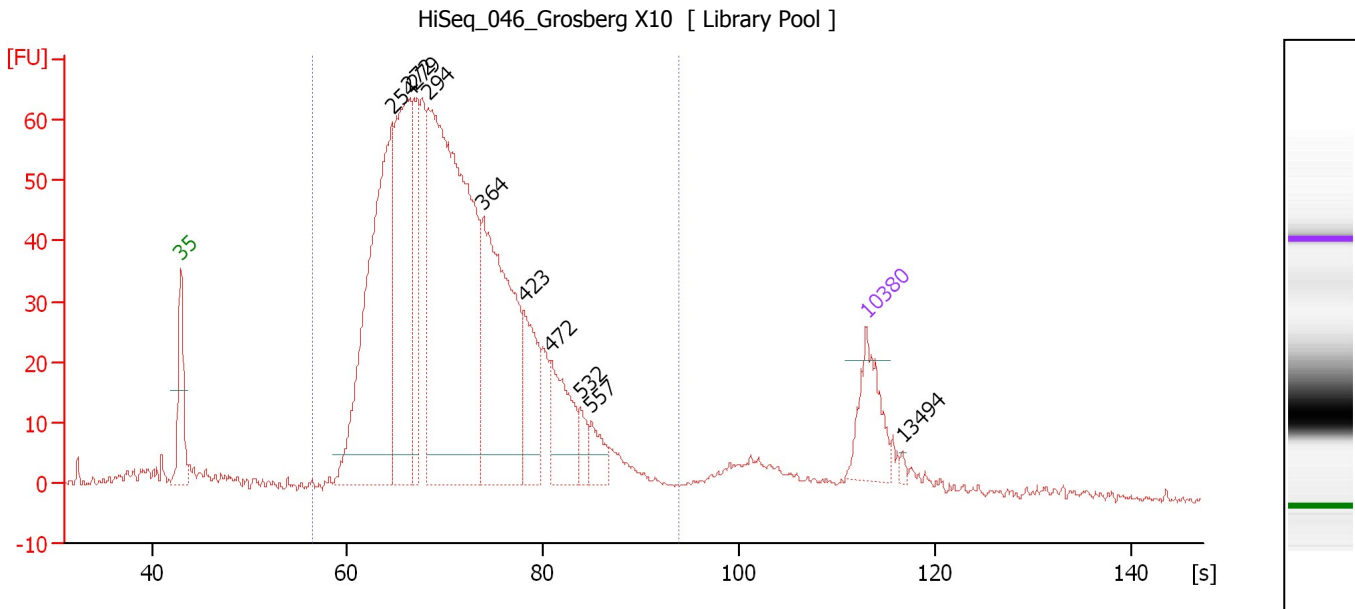
Region table for sample 10 : C17

From [bp]	Average Size [bp]	To [bp]	Corr. Area	% of Total	Size distribution in CV [%]	Conc. [pg/μl]	Molarity [pmol/l]	Color
97	384	1,540	197.9	52	46.9	456.97	2,455.0	Blue

Assay Class: High Sensitivity DNA Assay
 Data Path: C:\...ents and Settings\Bioanalyzer\2015-01-13\2015-01-13_002.xad

Created: 1/13/2015 2:18:16 PM
 Modified: 1/13/2015 3:01:16 PM

Electropherogram Summary Continued ...



Overall Results for sample 11 : HiSeq_046_Grosberg X10

Number of peaks found: 10 Corr. Area 1: 1,387.9
 Noise: 0.4

Peak table for sample 11 : HiSeq_046_Grosberg X10

Peak	Size [bp]	Conc. [pg/μl]	Molarity [pmol/l]	Observations	Aligned Migration Time [s]
1	35	125.00	5,411.3	Lower Marker	43.00
2	254	641.66	3,831.1		64.60
3	272	402.17	2,238.6		66.24
4	279	155.36	843.8		66.84
5	294	975.32	5,020.9		68.22
6	364	428.73	1,784.2		73.86
7	423	118.30	423.8		78.03
8	472	112.48	361.2		80.77
9	532	28.84	82.2		83.78
10	557	36.27	98.7		84.93
11	10,380	75.00	10.9	Upper Marker	113.00
12	13,494	0.00	0.0		116.67

Region table for sample 11 : HiSeq_046_Grosberg X10

From [bp]	Average Size [bp]	To [bp]	Corr. Area	% of Total	Size distribution in CV [%]	Conc. [pg/μl]	Molarity [pmol/l]	Color
163	340	1,000	1,387.9	90	29.7	3,225.52	15,825.8	Blue

Assay Class: High Sensitivity DNA Assay
Data Path: C:\...ents and Settings\Bioanalyzer\2015-01-13\2015-01-13_002.xad

Created: 1/13/2015 2:18:16 PM
Modified: 1/13/2015 3:01:16 PM

Gel Image

Assay Class: High Sensitivity DNA Assay
 Data Path: C:\...ents and Settings\Bioanalyzer\2015-01-13\2015-01-13_002.xad

Created: 1/13/2015 2:18:16 PM
 Modified: 1/13/2015 3:01:16 PM

Run Logbook

Description	Number	Source	Category	Sub Category	Time	Time Zone	User	Host
Run ended on port 1 (Number of wells acquired: 12)		Instrument	Run		1/13/2015 2:59:35 PM	(GMT --08:00) Pacific Standard Time	UC Davis	D8XSMGH1
Run started on port 1 (File: C:\Documents and Settings\Bioanalyzer\2015-01-13\2015-01-13_002.xad)		Instrument	Run		1/13/2015 2:18:22 PM	(GMT --08:00) Pacific Standard Time	UC Davis	D8XSMGH1
Product Number : G2938B		Instrument	Run		1/13/2015 2:18:22 PM	(GMT --08:00) Pacific Standard Time	UC Davis	D8XSMGH1
Name :		Instrument	Run		1/13/2015 2:18:22 PM	(GMT --08:00) Pacific Standard Time	UC Davis	D8XSMGH1
Vendor : Agilent Technologies		Instrument	Run		1/13/2015 2:18:22 PM	(GMT --08:00) Pacific Standard Time	UC Davis	D8XSMGH1
Serial# : DE13701086		Instrument	Run		1/13/2015 2:18:22 PM	(GMT --08:00) Pacific Standard Time	UC Davis	D8XSMGH1
Firmware : C.01.069		Instrument	Run		1/13/2015 2:18:22 PM	(GMT --08:00) Pacific Standard Time	UC Davis	D8XSMGH1
Cartridge : Electrode		Instrument	Run		1/13/2015 2:18:22 PM	(GMT --08:00) Pacific Standard Time	UC Davis	D8XSMGH1