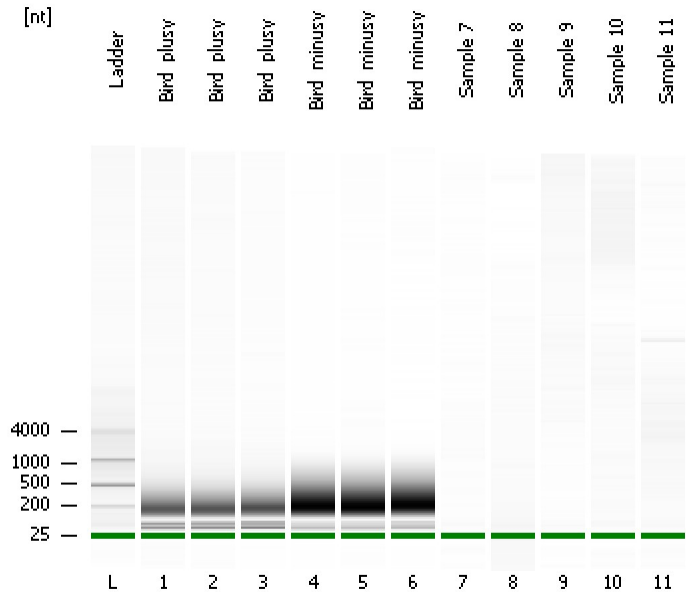


Assay Class: mRNA Pico  
Data Path: C:\...ents and Settings\Bioanalyzer\2015-01-21\2015-01-21\_002.xad

Created: 1/21/2015 12:51:57 PM  
Modified: 1/21/2015 1:17:51 PM

**Electrophoresis File Run Summary**



Instrument Information:

Instrument Name: DE13701086      Firmware: C.01.069  
Serial#: DE13701086      Type: G2938B

Assay Information:

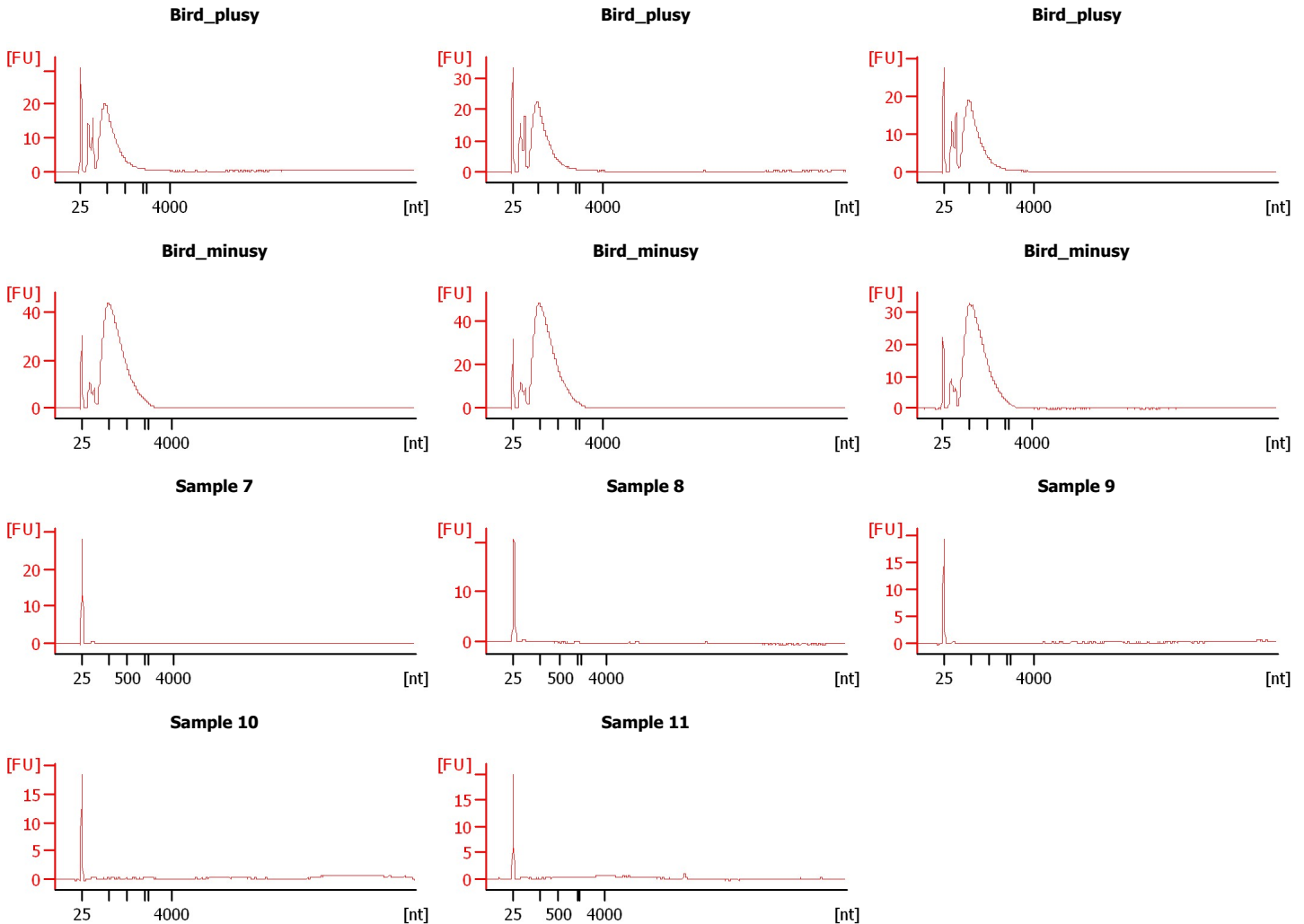
Assay Origin Path: C:\Program Files\Agilent\2100 bioanalyzer\2100 expert\assays\RNA\mRNA Pico Series II.xsy

Assay Class: mRNA Pico  
Version: 2.6  
Assay Comments: mRNA Analysis pg sensitivity

© Copyright 2003 - 2009 Agilent Technologies, Inc.

Chip Information:

Chip Lot #:      Reagent Kit Lot #:  
Chip Comments:



Assay Class: mRNA Pico  
Data Path: C:\...ents and Settings\Bioanalyzer\2015-01-21\2015-01-21\_002.xad

Created: 1/21/2015 12:51:57 PM  
Modified: 1/21/2015 1:17:51 PM

**Electrophoresis File Run Summary (Chip Summary)**

Sample Name	Sample Comment	Status	Result Label	Result Color
Bird_plusy		✓		
Bird_plusy		✓		
Bird_plusy		✓		
Bird_minusy		✓		
Bird_minusy		✓		
Bird_minusy		✓		
Sample 7		✓		
Sample 8		✓		
Sample 9		✓		
Sample 10		✓		
Sample 11		✓		
Ladder		✓		

**Chip Lot #****Reagent Kit Lot #****Chip Comments :**

Assay Class: mRNA Pico  
Data Path: C:\...ents and Settings\Bioanalyzer\2015-01-21\2015-01-21\_002.xad

Created: 1/21/2015 12:51:57 PM  
Modified: 1/21/2015 1:17:51 PM

## Electrophoresis Assay Details

### General Analysis Settings

Number of Available Sample and Ladder Wells (Max.) : 12  
Minimum Visible Range [s] : 14  
Maximum Visible Range [s] : 85  
Start Analysis Time Range [s] : 15  
End Analysis Time Range [s] : 84  
Ladder Concentration [pg/ $\mu$ l] : 1000  
Lower Marker Concentration [pg/ $\mu$ l] : 0  
Upper Marker Concentration [pg/ $\mu$ l] : 0  
Used Lower Marker for Quantitation  
Standard Curve Fit is Logarithmic  
Show Data Aligned to Lower Marker

### Integrator Settings

Integration Start Time [s] : 15  
Integration End Time [s] : 84  
Slope Threshold : 0.2  
Height Threshold [FU] : 0.5  
Area Threshold : 0.1  
Width Threshold [s] : 0.2  
Baseline Plateau [s] : 0.5

### Filter Settings

Filter Width [s] : 0.5  
Polynomial Order : 4

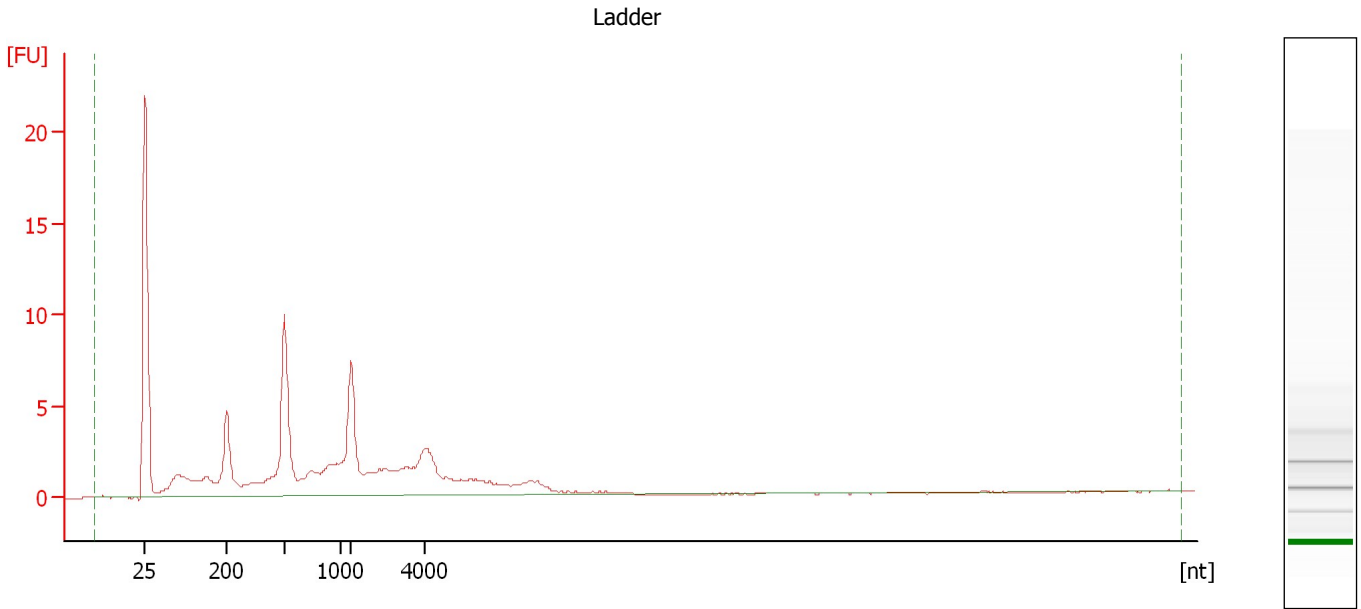
### Ladder

Ladder Peak	Size
1	25
2	200
3	500
4	1000
5	2000
6	4000

Assay Class: mRNA Pico  
Data Path: C:\...ents and Settings\Bioanalyzer\2015-01-21\2015-01-21\_002.xad

Created: 1/21/2015 12:51:57 PM  
Modified: 1/21/2015 1:17:51 PM

**Electropherogram Summary**



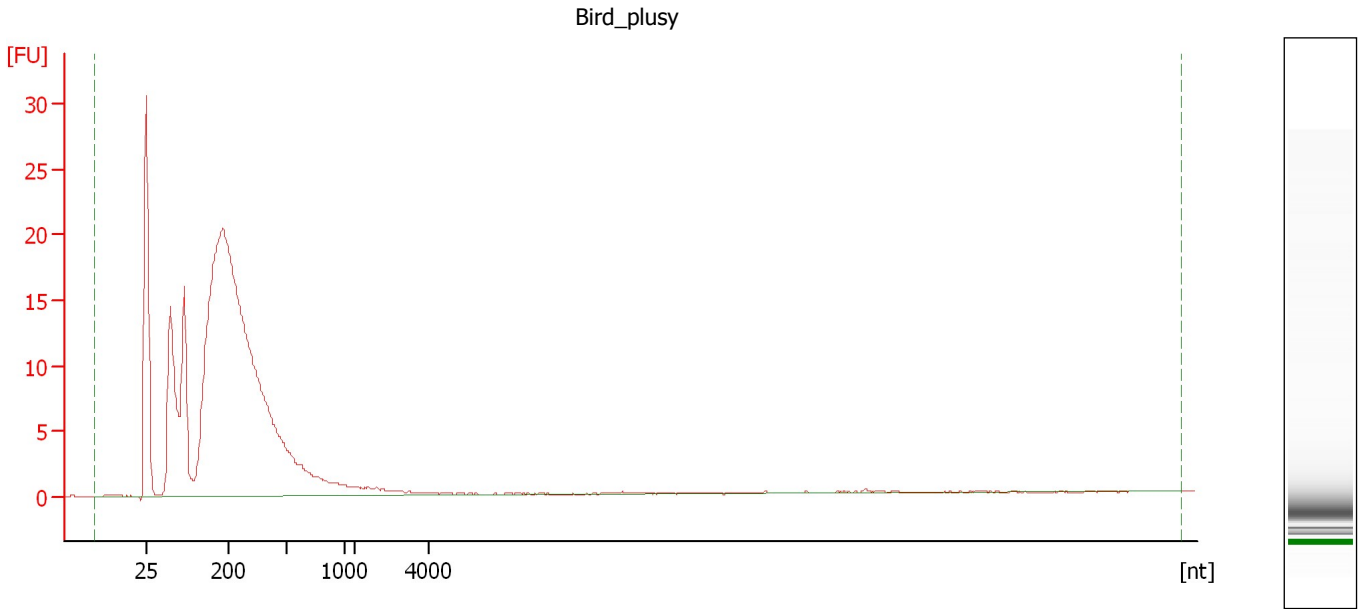
**Overall Results for Ladder**

RNA Area: 108.7                      RNA Concentration: 1,000 pg/μl

Assay Class: mRNA Pico  
Data Path: C:\...ents and Settings\Bioanalyzer\2015-01-21\2015-01-21\_002.xad

Created: 1/21/2015 12:51:57 PM  
Modified: 1/21/2015 1:17:51 PM

**Electropherogram Summary Continued ...**



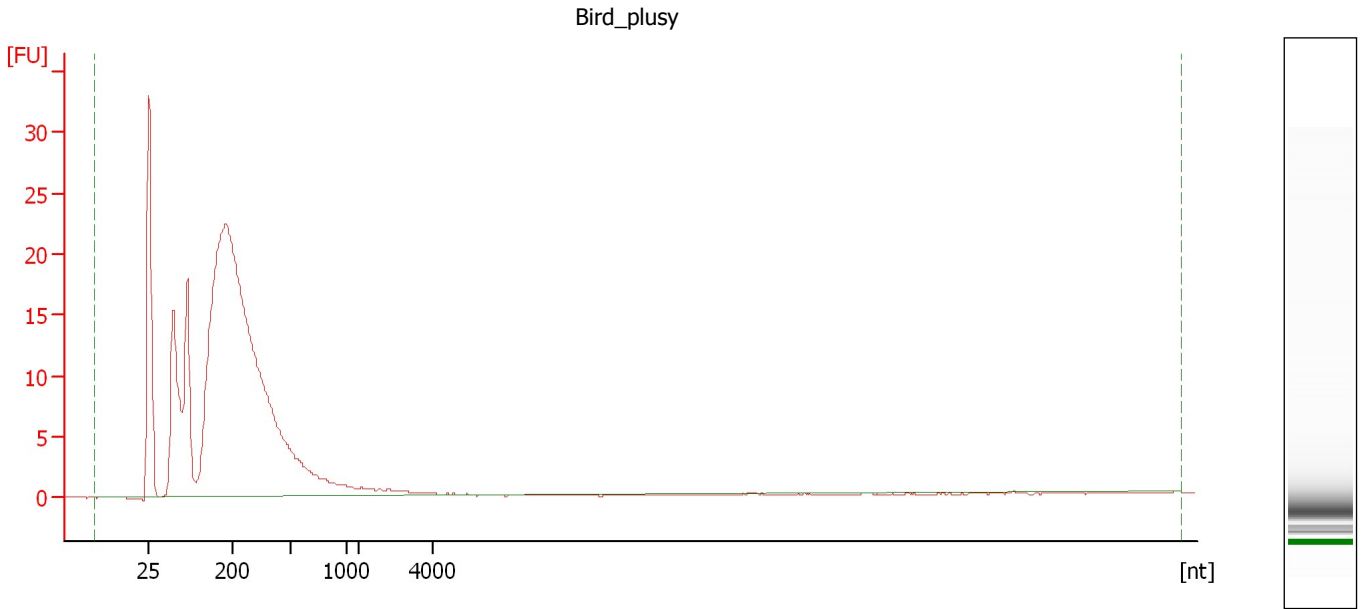
**Overall Results for sample 1 : Bird\_plusy**

RNA Area:	363.9	rRNA Contamination:	0.0 %
RNA Concentration:	3,347 pg/μl		

Assay Class: mRNA Pico  
Data Path: C:\...ents and Settings\Bioanalyzer\2015-01-21\2015-01-21\_002.xad

Created: 1/21/2015 12:51:57 PM  
Modified: 1/21/2015 1:17:51 PM

**Electropherogram Summary Continued ...**



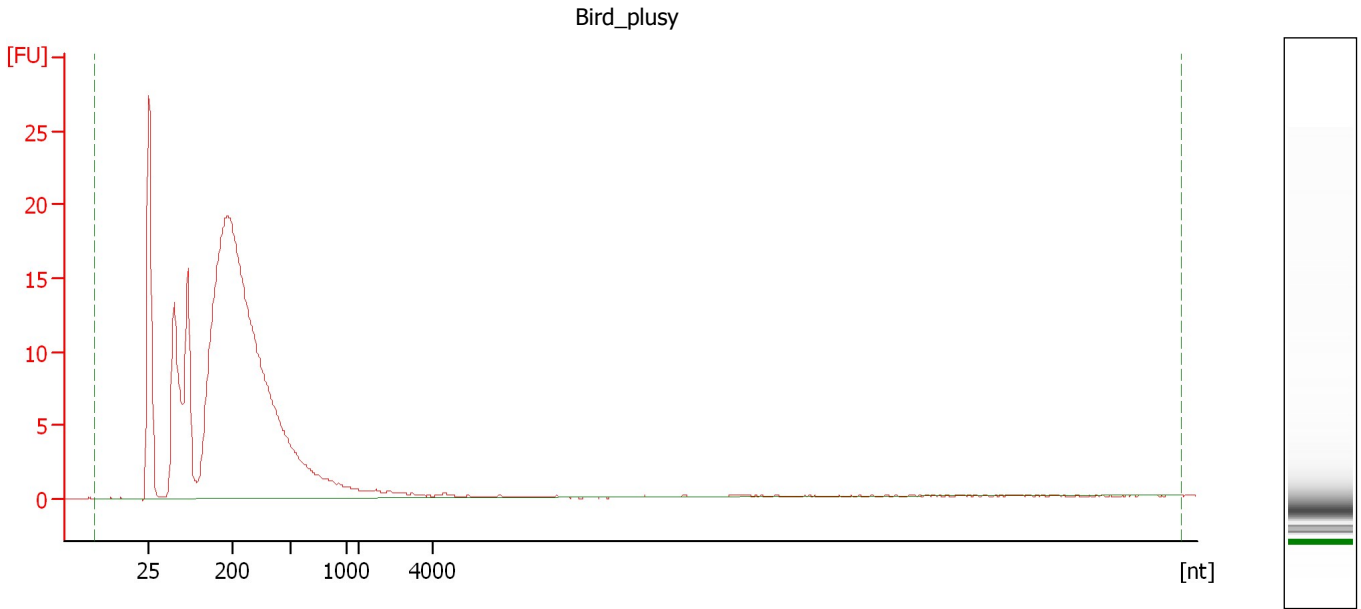
**Overall Results for sample 2 : Bird\_plusy**

RNA Area: 395.1                      rRNA Contamination: 0.0 %  
RNA Concentration: 3,633 pg/μl

Assay Class: mRNA Pico  
Data Path: C:\...ents and Settings\Bioanalyzer\2015-01-21\2015-01-21\_002.xad

Created: 1/21/2015 12:51:57 PM  
Modified: 1/21/2015 1:17:51 PM

**Electropherogram Summary Continued ...**



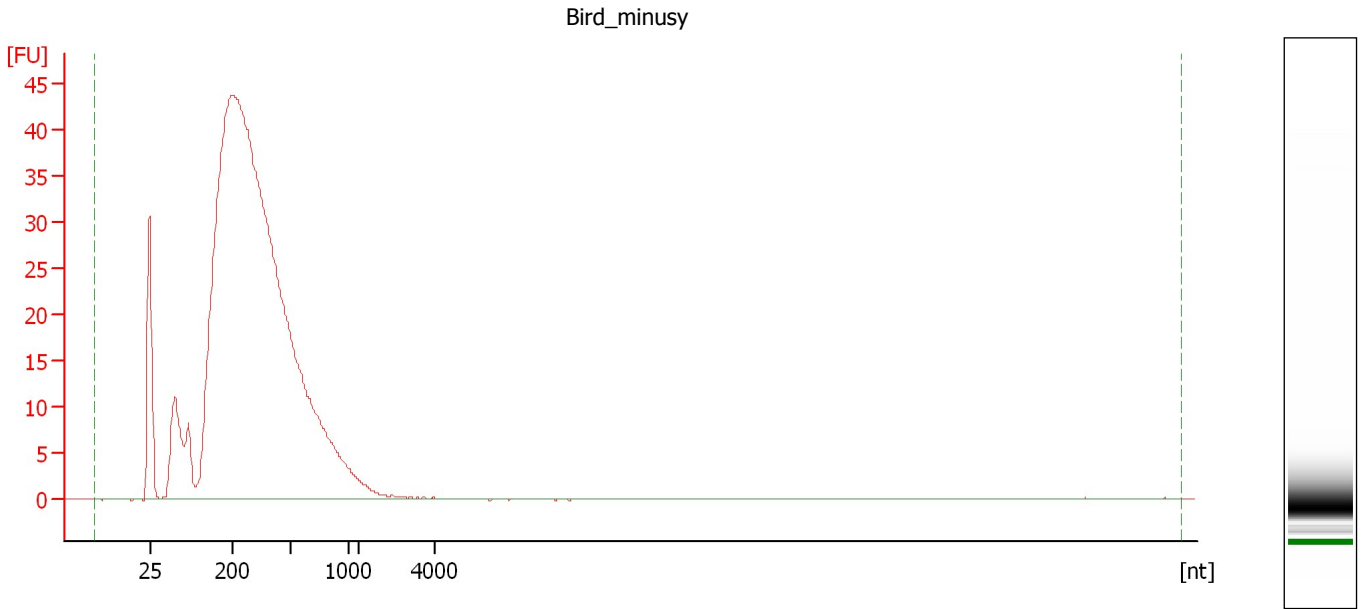
**Overall Results for sample 3 : Bird\_plusy**

RNA Area: 345.2                      rRNA Contamination: 0.0 %  
RNA Concentration: 3,175 pg/μl

Assay Class: mRNA Pico  
Data Path: C:\...ents and Settings\Bioanalyzer\2015-01-21\2015-01-21\_002.xad

Created: 1/21/2015 12:51:57 PM  
Modified: 1/21/2015 1:17:51 PM

**Electropherogram Summary Continued ...**



**Overall Results for sample 4 : Bird\_minusy**

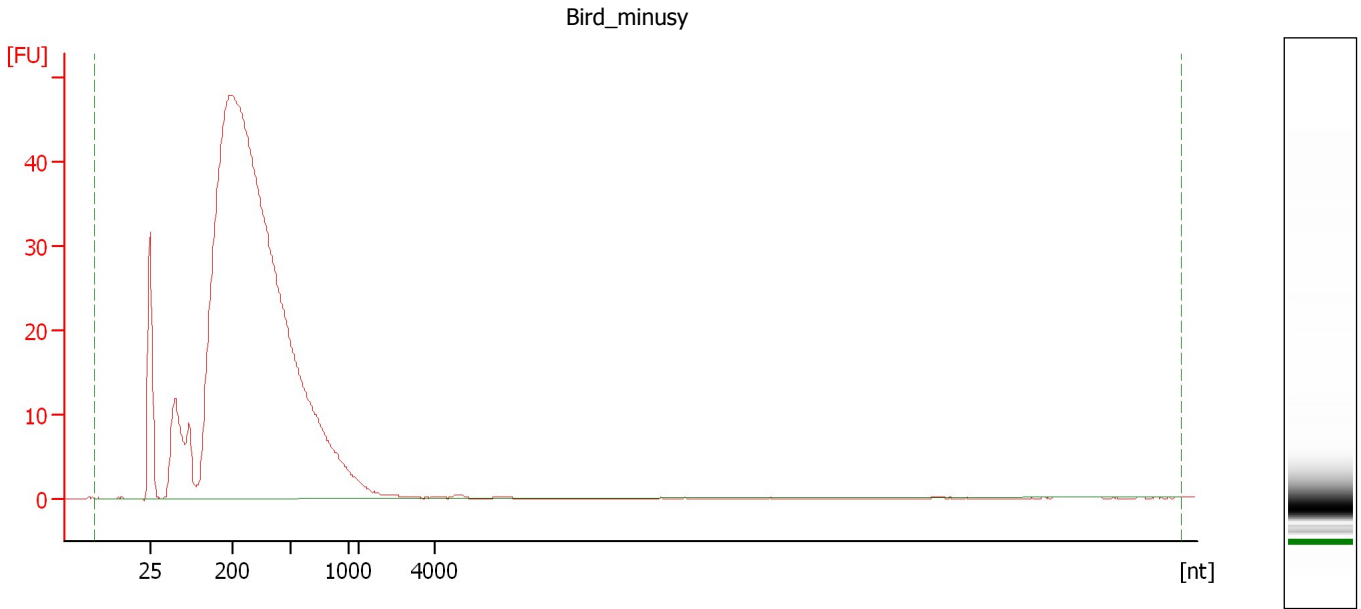
RNA Area: 870.7                      rRNA Contamination: 0.0 %  
RNA Concentration: 8,008 pg/μl



Assay Class: mRNA Pico  
Data Path: C:\...ents and Settings\Bioanalyzer\2015-01-21\2015-01-21\_002.xad

Created: 1/21/2015 12:51:57 PM  
Modified: 1/21/2015 1:17:51 PM

**Electropherogram Summary Continued ...**



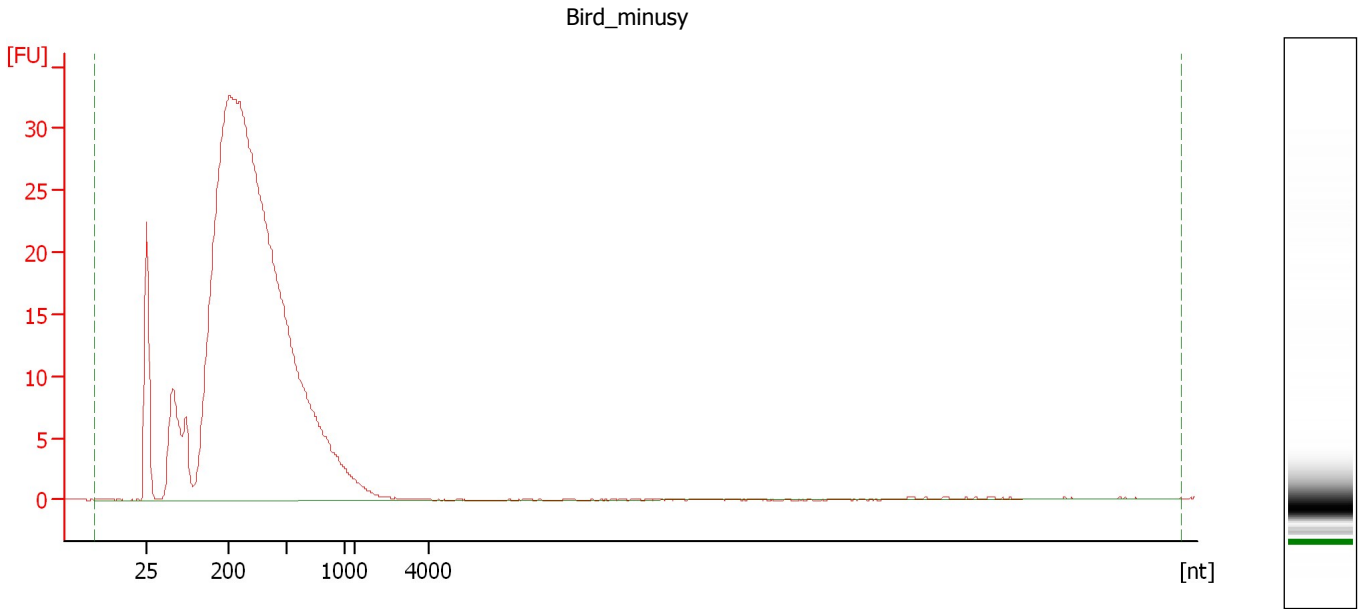
**Overall Results for sample 5 : Bird\_minusy**

RNA Area: 939.8                      rRNA Contamination: 0.0 %  
RNA Concentration: 8,643 pg/μl

Assay Class: mRNA Pico  
Data Path: C:\...ents and Settings\Bioanalyzer\2015-01-21\2015-01-21\_002.xad

Created: 1/21/2015 12:51:57 PM  
Modified: 1/21/2015 1:17:51 PM

**Electropherogram Summary Continued ...**



**Overall Results for sample 6 : Bird\_minusy**

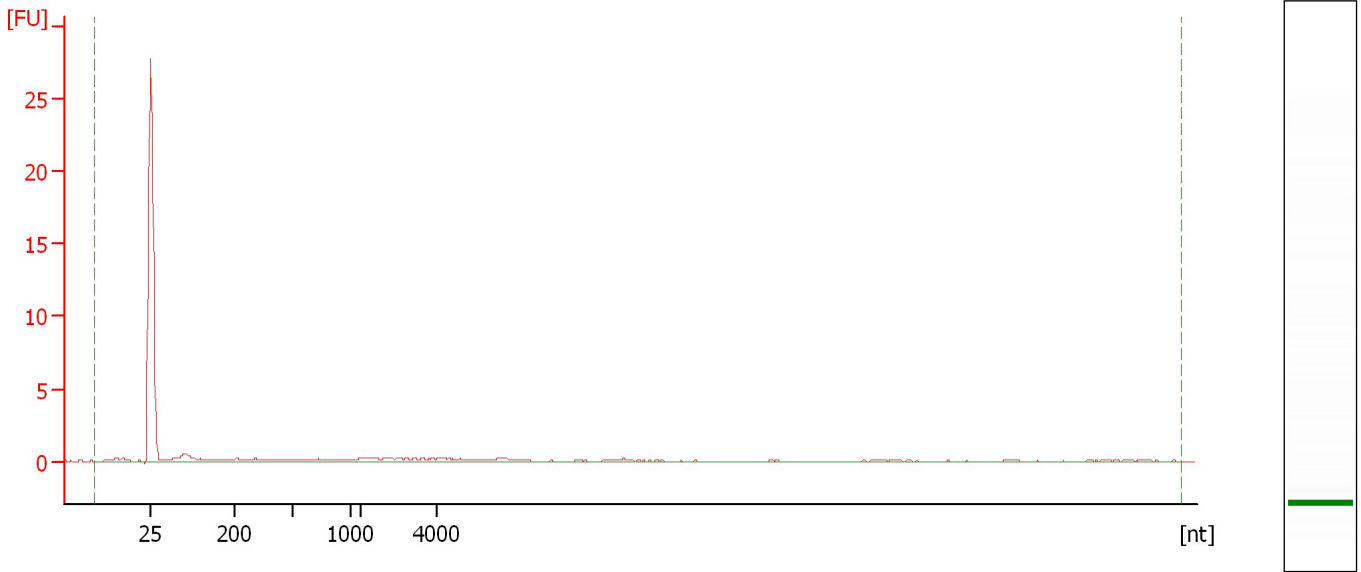
RNA Area: 656.0                      rRNA Contamination: 0.0 %  
RNA Concentration: 6,033 pg/μl

Assay Class: mRNA Pico  
Data Path: C:\...ents and Settings\Bioanalyzer\2015-01-21\2015-01-21\_002.xad

Created: 1/21/2015 12:51:57 PM  
Modified: 1/21/2015 1:17:51 PM

**Electropherogram Summary Continued ...**

Sample 7



**Overall Results for sample 7 : Sample 7**

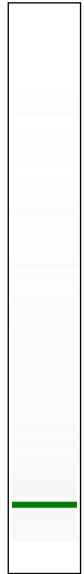
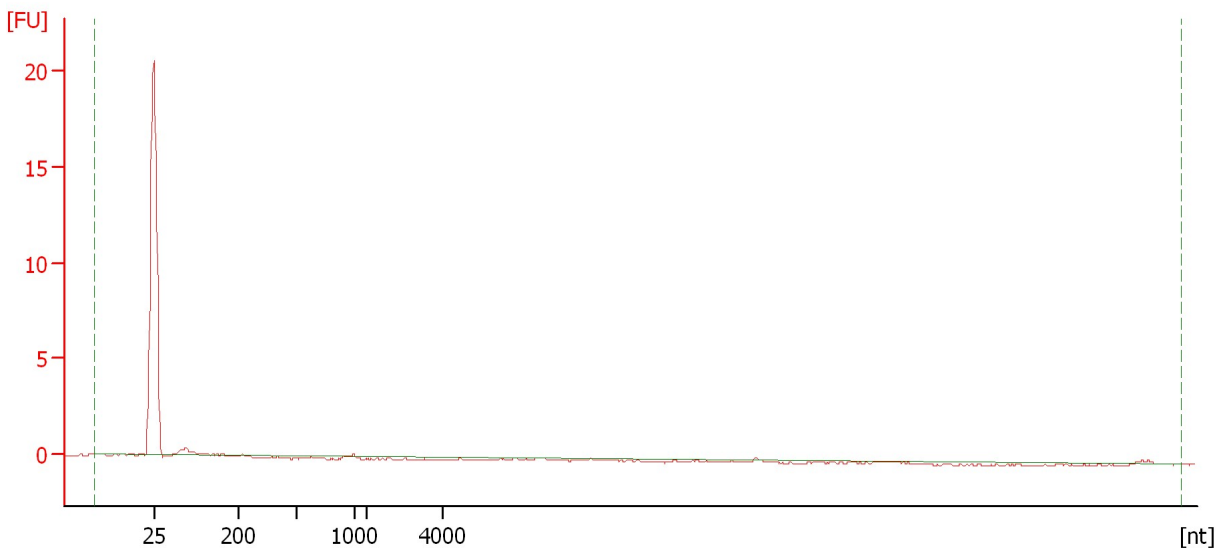
RNA Area:	17.6	rRNA Contamination:	0.0 %
RNA Concentration:	162 pg/μl		

Assay Class: mRNA Pico  
Data Path: C:\...ents and Settings\Bioanalyzer\2015-01-21\2015-01-21\_002.xad

Created: 1/21/2015 12:51:57 PM  
Modified: 1/21/2015 1:17:51 PM

**Electropherogram Summary Continued ...**

Sample 8



**Overall Results for sample 8 : Sample 8**

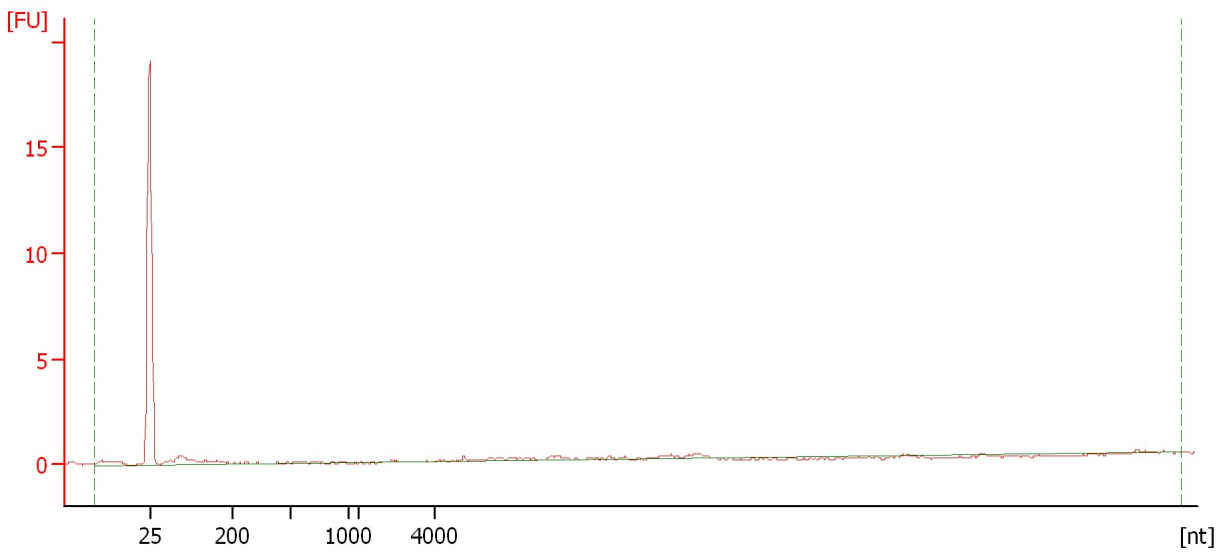
RNA Area:	1.5	rRNA Contamination:	0.0 %
RNA Concentration:	14 pg/μl		

Assay Class: mRNA Pico  
Data Path: C:\...ents and Settings\Bioanalyzer\2015-01-21\2015-01-21\_002.xad

Created: 1/21/2015 12:51:57 PM  
Modified: 1/21/2015 1:17:51 PM

**Electropherogram Summary Continued ...**

Sample 9



**Overall Results for sample 9 : Sample 9**

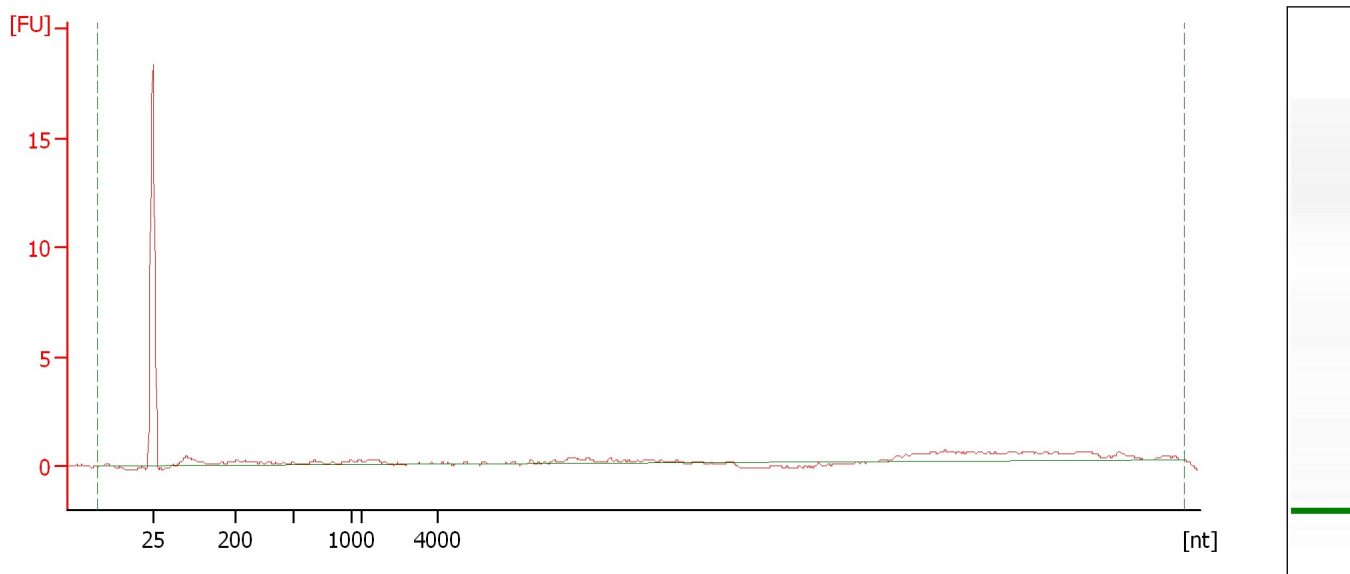
RNA Area:	7.8	rRNA Contamination:	0.0 %
RNA Concentration:	71 pg/ $\mu$ l		

Assay Class: mRNA Pico  
Data Path: C:\...ents and Settings\Bioanalyzer\2015-01-21\2015-01-21\_002.xad

Created: 1/21/2015 12:51:57 PM  
Modified: 1/21/2015 1:17:51 PM

**Electropherogram Summary Continued ...**

Sample 10



**Overall Results for sample 10 : Sample 10**

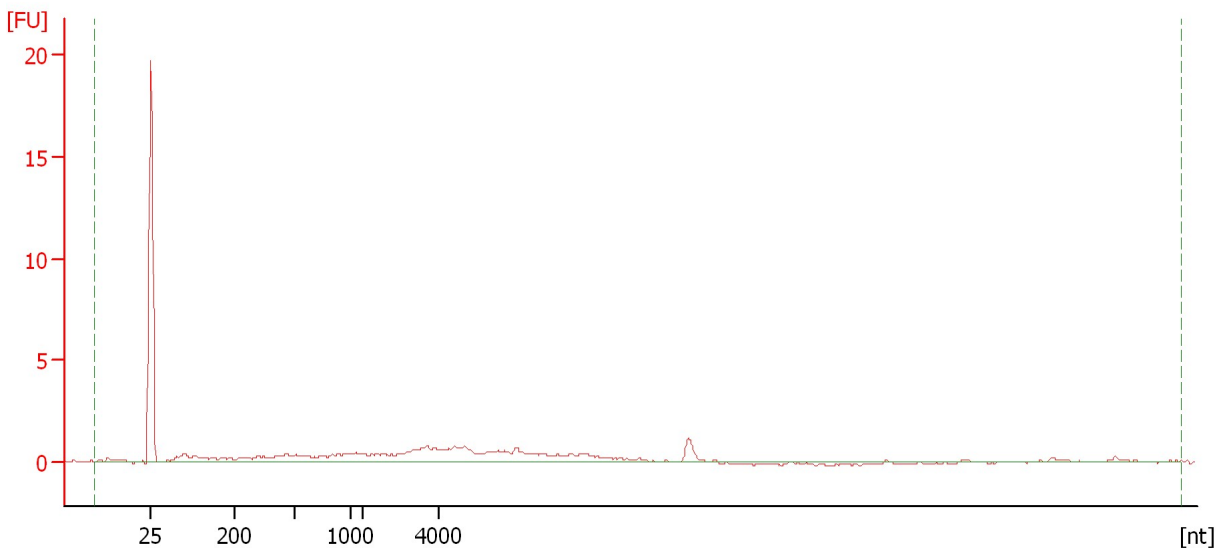
RNA Area:	19.9	rRNA Contamination:	0.0 %
RNA Concentration:	183 pg/μl		

Assay Class: mRNA Pico  
Data Path: C:\...ents and Settings\Bioanalyzer\2015-01-21\2015-01-21\_002.xad

Created: 1/21/2015 12:51:57 PM  
Modified: 1/21/2015 1:17:51 PM

**Electropherogram Summary Continued ...**

Sample 11



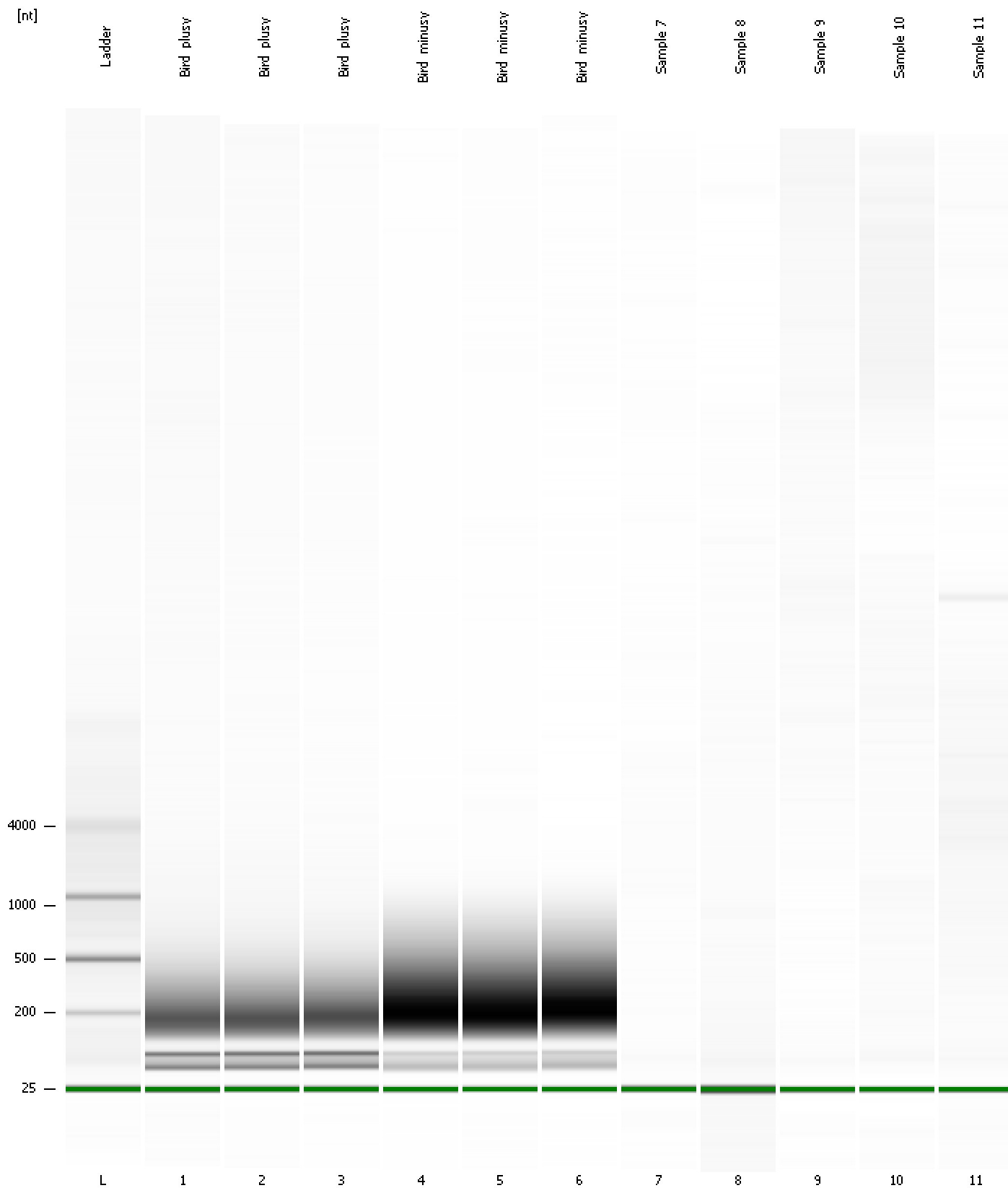
**Overall Results for sample 11 : Sample 11**

RNA Area: 31.2                      rRNA Contamination: 0.0 %  
RNA Concentration: 287 pg/μl

Assay Class: mRNA Pico  
Data Path: C:\...ents and Settings\Bioanalyzer\2015-01-21\2015-01-21\_002.xad

Created: 1/21/2015 12:51:57 PM  
Modified: 1/21/2015 1:17:51 PM

**Gel Image**





Assay Class: mRNA Pico  
 Data Path: C:\...ents and Settings\Bioanalyzer\2015-01-21\2015-01-21\_002.xad

Created: 1/21/2015 12:51:57 PM  
 Modified: 1/21/2015 1:17:51 PM

**Run Logbook**

Description	Number	Source	Category	Sub Category	Time	Time Zone	User	Host
Run ended on port 1 (Number of wells acquired: 12)		Instrument	Run		1/21/2015 1:17:49 PM	(GMT --08:00) Pacific Standard Time	UC Davis	D8XSMGH1
Run started on port 1 (File: C:\Documents and Settings\Bioanalyzer\2015-01-21\2015-01-21_002.xad)		Instrument	Run		1/21/2015 12:52:03 PM	(GMT --08:00) Pacific Standard Time	UC Davis	D8XSMGH1
Product Number : G2938B		Instrument	Run		1/21/2015 12:52:03 PM	(GMT --08:00) Pacific Standard Time	UC Davis	D8XSMGH1
Name :		Instrument	Run		1/21/2015 12:52:03 PM	(GMT --08:00) Pacific Standard Time	UC Davis	D8XSMGH1
Vendor : Agilent Technologies		Instrument	Run		1/21/2015 12:52:03 PM	(GMT --08:00) Pacific Standard Time	UC Davis	D8XSMGH1
Serial# : DE13701086		Instrument	Run		1/21/2015 12:52:03 PM	(GMT --08:00) Pacific Standard Time	UC Davis	D8XSMGH1
Firmware : C.01.069		Instrument	Run		1/21/2015 12:52:03 PM	(GMT --08:00) Pacific Standard Time	UC Davis	D8XSMGH1
Cartridge : Electrode		Instrument	Run		1/21/2015 12:52:03 PM	(GMT --08:00) Pacific Standard Time	UC Davis	D8XSMGH1