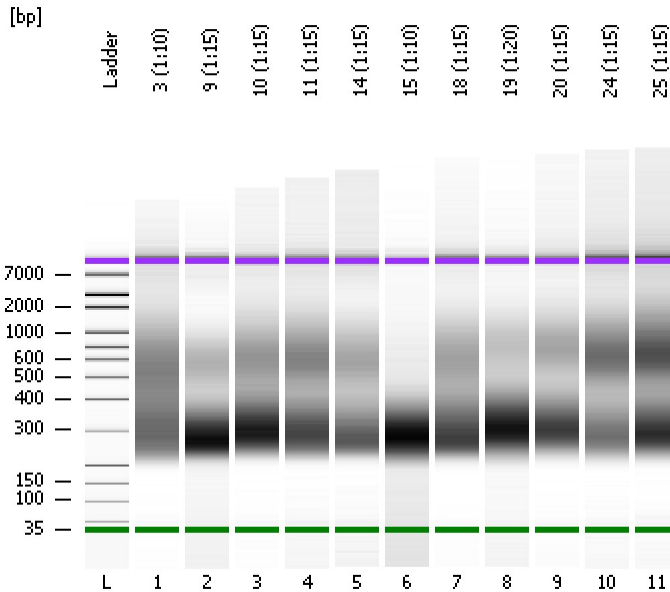


Assay Class: High Sensitivity DNA Assay
Data Path: C:\...ents and Settings\Bioanalyzer\2015-02-02\2015-02-02_003.xad

Created: 2/2/2015 12:21:42 PM
Modified: 2/2/2015 1:20:41 PM

Electrophoresis File Run Summary



Instrument Information:

Instrument Name: DE13701086 Firmware: C.01.069
Serial#: DE13701086 Type: G2938B

Assay Information:

Assay Origin Path: C:\Program Files\Agilent\2100 bioanalyzer\2100 expert\assays\dsDNA\High Sensitivity DNA.xsy
Assay Class: High Sensitivity DNA Assay
Version: 1.03
Assay Comments: Copyright © 2003-2010 Agilent Technologies

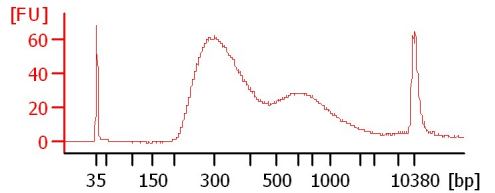
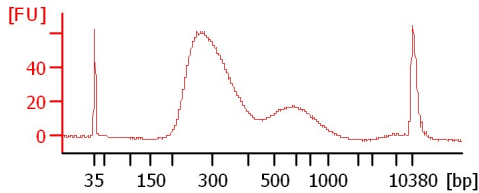
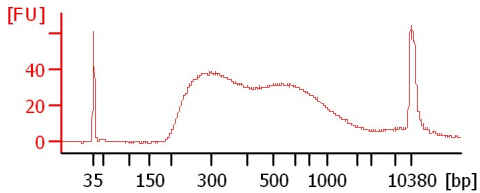
Chip Information:

Chip Lot #: Reagent Kit Lot #: Chip Comments:

3 (1:10)

9 (1:15)

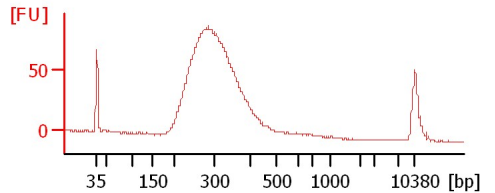
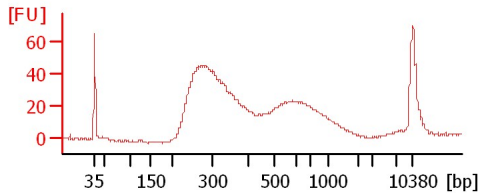
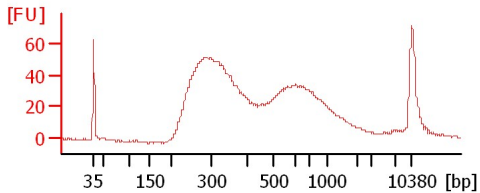
10 (1:15)



11 (1:15)

14 (1:15)

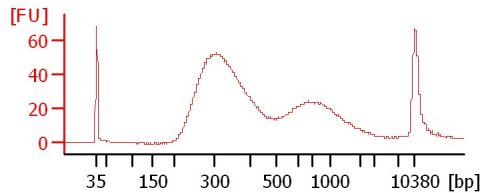
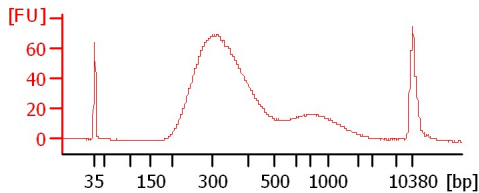
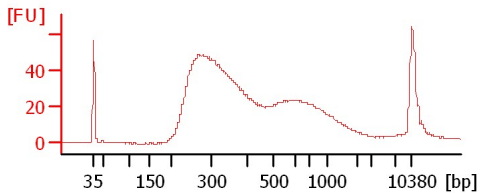
15 (1:10)



18 (1:15)

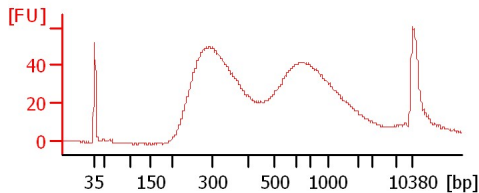
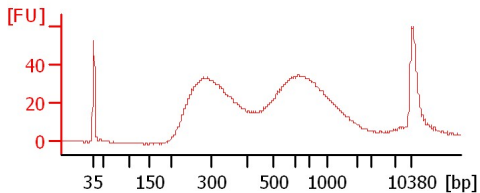
19 (1:20)

20 (1:15)



24 (1:15)

25 (1:15)



Assay Class: High Sensitivity DNA Assay
Data Path: C:\...ents and Settings\Bioanalyzer\2015-02-02\2015-02-02_003.xad

Created: 2/2/2015 12:21:42 PM
Modified: 2/2/2015 1:20:41 PM

Electrophoresis File Run Summary (Chip Summary)

Sample Name	Sample Comment	Rest. Digest	Status	Observation	Result Label	Result Color
3 (1:10)		<input type="checkbox"/>	✓			
9 (1:15)		<input type="checkbox"/>	✓			
10 (1:15)		<input type="checkbox"/>	✓			
11 (1:15)		<input type="checkbox"/>	✓			
14 (1:15)		<input type="checkbox"/>	✓			
15 (1:10)		<input type="checkbox"/>	✓			
18 (1:15)		<input type="checkbox"/>	✓			
19 (1:20)		<input type="checkbox"/>	✓			
20 (1:15)		<input type="checkbox"/>	✓			
24 (1:15)		<input type="checkbox"/>	✓			
25 (1:15)		<input type="checkbox"/>	✓			
Ladder		<input type="checkbox"/>	✓			

Chip Lot #

Reagent Kit Lot #

Chip Comments :

Assay Class: High Sensitivity DNA Assay
 Data Path: C:\...ents and Settings\Bioanalyzer\2015-02-02\2015-02-02_003.xad

Created: 2/2/2015 12:21:42 PM
 Modified: 2/2/2015 1:20:41 PM

Electrophoresis Assay Details

General Analysis Settings

Number of Available Sample and Ladder Wells (Max.) : 12
 Minimum Visible Range [s] : 32
 Maximum Visible Range [s] : 138
 Start Analysis Time Range [s] : 33
 End Analysis Time Range [s] : 137.5
 Ladder Concentration [pg/μl] : 1950
 Uses Standard Area for Ladder Fragments
 Lower Marker Concentration [pg/μl] : 125
 Upper Marker Concentration [pg/μl] : 75
 Used Upper Marker for Quantitation
 Standard Curve Fit is Point to Point
 Show Data Aligned to Lower and Upper Marker

Integrator Settings

Integration Start Time [s] : 33.05
 Integration End Time [s] : 137
 Slope Threshold : 0.8
 Height Threshold [FU] : 5
 Area Threshold : 0.1
 Width Threshold [s] : 0.6
 Baseline Plateau [s] : 0.5

Filter Settings

Filter Width [s] : 0.5
 Polynomial Order : 4

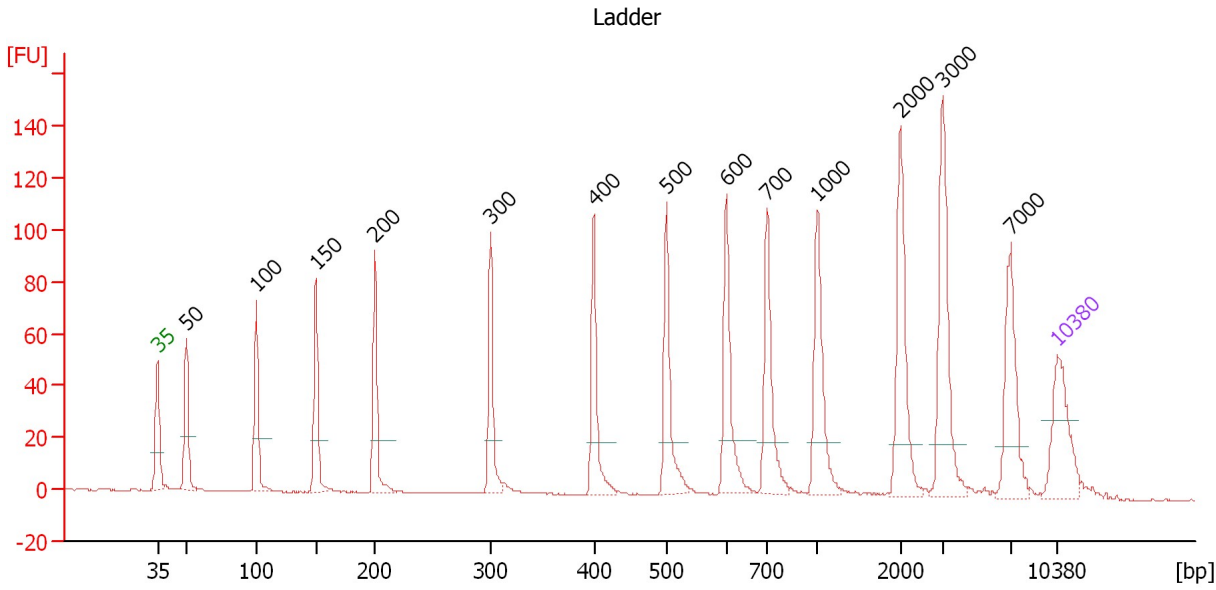
Ladder

Ladder Peak	Size	Area
1	35	160
2	50	210
3	100	208
4	150	221
5	200	242
6	300	270
7	400	305
8	500	306
9	600	336
10	700	321
11	1000	366
12	2000	413
13	3000	411
14	7000	400
15	10380	214

Assay Class: High Sensitivity DNA Assay
 Data Path: C:\...ents and Settings\Bioanalyzer\2015-02-02\2015-02-02_003.xad

Created: 2/2/2015 12:21:42 PM
 Modified: 2/2/2015 1:20:41 PM

Electropherogram Summary



Overall Results for Ladder

Noise: 0.1

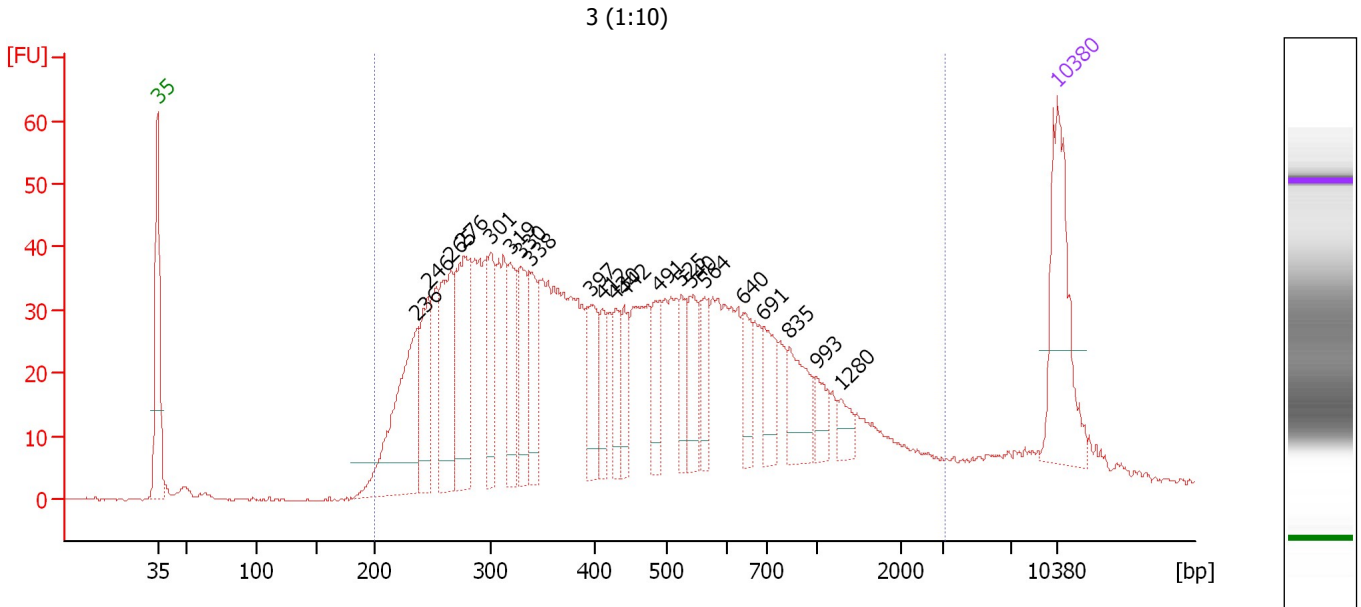
Peak table for Ladder

Peak	Size [bp]	Conc. [pg/μl]	Molarity [pmol/l]	Observations	Aligned Migration Time [s]
1	35	125.00	5,411.3	Lower Marker	43.00
2	50	150.00	4,545.5	Ladder Peak	45.24
3	100	150.00	2,272.7	Ladder Peak	50.67
4	150	150.00	1,515.2	Ladder Peak	55.33
5	200	150.00	1,136.4	Ladder Peak	59.91
6	300	150.00	757.6	Ladder Peak	68.92
7	400	150.00	568.2	Ladder Peak	76.95
8	500	150.00	454.5	Ladder Peak	82.60
9	600	150.00	378.8	Ladder Peak	87.26
10	700	150.00	324.7	Ladder Peak	90.40
11	1,000	150.00	227.3	Ladder Peak	94.35
12	2,000	150.00	113.6	Ladder Peak	100.80
13	3,000	150.00	75.8	Ladder Peak	104.08
14	7,000	150.00	32.5	Ladder Peak	109.37
15	10,380	75.00	10.9	Upper Marker	113.00

Assay Class: High Sensitivity DNA Assay
 Data Path: C:\...ents and Settings\Bioanalyzer\2015-02-02\2015-02-02_003.xad

Created: 2/2/2015 12:21:42 PM
 Modified: 2/2/2015 1:20:41 PM

Electropherogram Summary Continued ...



Overall Results for sample 1 : 3 (1:10)

Number of peaks found: 21 Corr. Area 1: 1,503.2
 Noise: 0.2

Peak table for sample 1 : 3 (1:10)


Peak	Size [bp]	Conc. [pg/μl]	Molarity [pmol/l]	Observations	Aligned Migration Time [s]
1	35	125.00	5,411.3	Lower Marker	43.00
2	236	144.01	923.0		63.19
3	246	65.16	401.5		64.05
4	265	92.86	530.0		65.81
5	276	100.83	552.5		66.80
6	301	49.59	249.9		68.97
7	319	54.93	260.7		70.46
8	330	55.61	255.4		71.32
9	338	44.04	197.2		71.99
10	397	48.51	185.0		76.74
11	412	26.37	96.9		77.64
12	430	25.82	91.0		78.63
13	442	25.39	87.1		79.31
14	491	31.36	96.9		82.06
15	525	24.57	70.9		83.78
16	540	34.92	98.0		84.46
17	564	24.52	65.8		85.59
18	640	24.95	59.1		88.52
19	691	33.49	73.5		90.10
20	835	39.75	72.1		92.18
21	993	16.59	25.3		94.26
22	1,280	12.23	14.5		96.15
23	10,380	75.00	10.9	Upper Marker	113.00

Assay Class: High Sensitivity DNA Assay
Data Path: C:\...ents and Settings\Bioanalyzer\2015-02-02\2015-02-02_003.xad

Created: 2/2/2015 12:21:42 PM
Modified: 2/2/2015 1:20:41 PM

Electropherogram Summary Continued ...

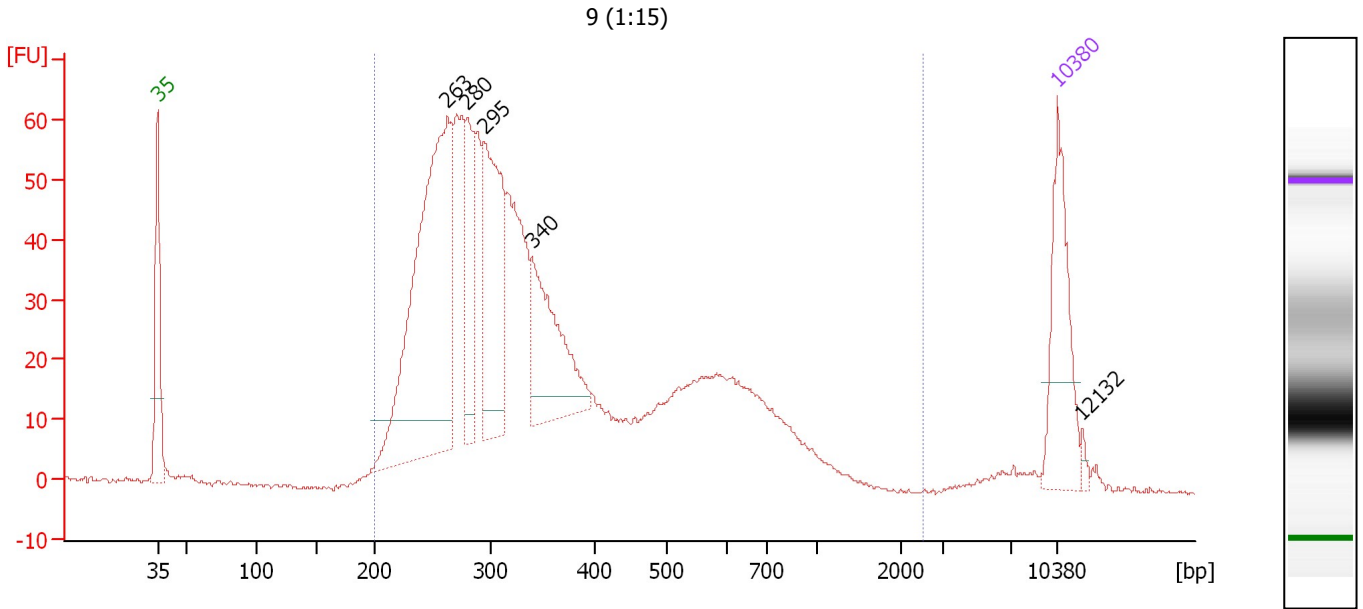
... Region table for sample 1 : 3 (1:10)

From [bp]	Average Size [bp]	To [bp]	Corr. Area	% of Total	Size distribution in CV [%]	Conc. [pg/ μ l]	Molarity [pmol/l]	Color
200	551	3,148	1,503.2	95	75.9	1,918.46	7,758.1	

Assay Class: High Sensitivity DNA Assay
 Data Path: C:\...ents and Settings\Bioanalyzer\2015-02-02\2015-02-02_003.xad

Created: 2/2/2015 12:21:42 PM
 Modified: 2/2/2015 1:20:41 PM

Electropherogram Summary Continued ...



Overall Results for sample 2 : 9 (1:15)

Number of peaks found: 5 Corr. Area 1: 1,338.9
 Noise: 0.4

Peak table for sample 2 : 9 (1:15)

Peak	Size [bp]	Conc. [pg/μl]	Molarity [pmol/l]	Observations	Aligned Migration Time [s]
1	35	125.00	5,411.3	Lower Marker	43.00
2	263	415.36	2,396.1		65.55
3	280	81.86	443.0		67.11
4	295	175.72	903.3		68.45
5	340	130.93	582.7		72.17
6	10,380	75.00	10.9	Upper Marker	113.00
7	12,132	0.00	0.0		114.88

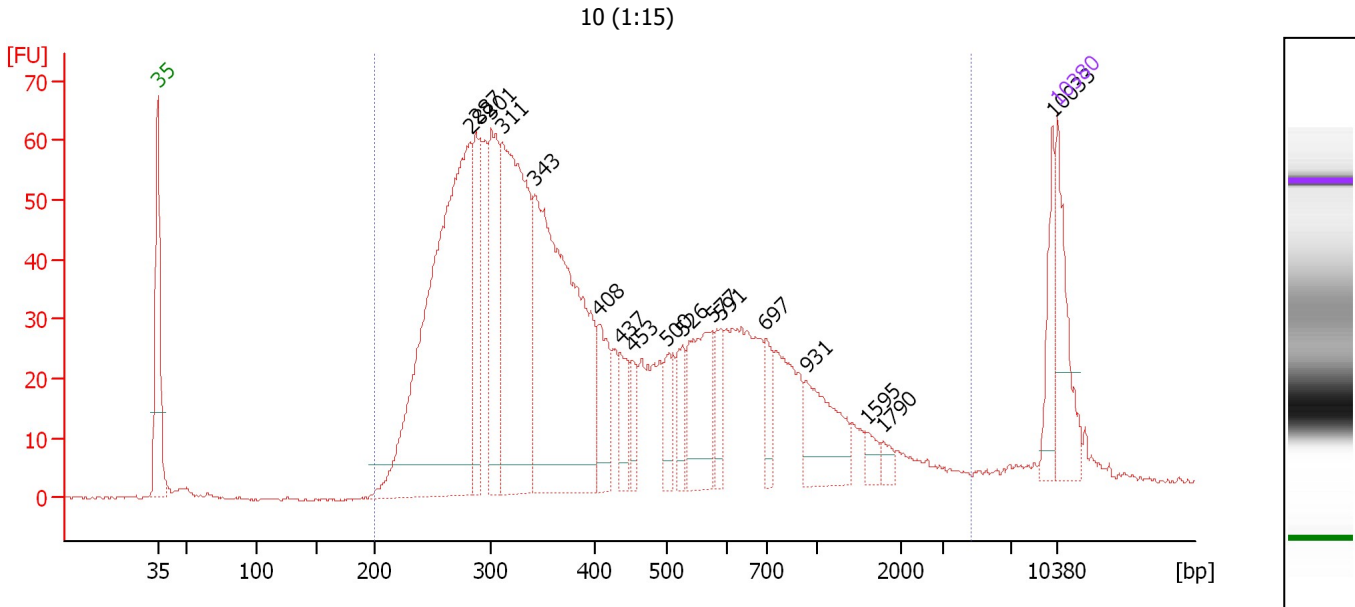
Region table for sample 2 : 9 (1:15)

From [bp]	Average Size [bp]	To [bp]	Corr. Area	% of Total	Size distribution in CV [%]	Conc. [pg/μl]	Molarity [pmol/l]	Color
200	392	2,514	1,338.9	96	51.4	1,788.21	8,471.6	Blue

Assay Class: High Sensitivity DNA Assay
 Data Path: C:\...ents and Settings\Bioanalyzer\2015-02-02\2015-02-02_003.xad

Created: 2/2/2015 12:21:42 PM
 Modified: 2/2/2015 1:20:41 PM

Electropherogram Summary Continued ...



Overall Results for sample 3 : 10 (1:15)

Number of peaks found: 17 Corr. Area 1: 1,613.9
 Noise: 0.2

Peak table for sample 3 : 10 (1:15)

Peak	Size [bp]	Conc. [pg/μl]	Molarity [pmol/l]	Observations	Aligned Migration Time [s]
1	35	125.00	5,411.3	Lower Marker	43.00
2	282	758.10	4,070.8		67.31
3	287	130.08	685.9		67.78
4	301	179.91	906.0		68.99
5	311	435.41	2,123.2		69.78
6	343	559.50	2,474.2		72.34
7	408	73.85	274.6		77.37
8	437	43.98	152.4		79.05
9	453	31.92	106.8		79.93
10	500	44.50	134.9		82.59
11	526	39.71	114.4		83.80
12	577	112.16	294.7		86.17
13	591	35.77	91.8		86.83
14	597	34.32	74.5		90.32
15	697	92.27	150.1		93.44
16	1,595	13.76	13.1		98.19
17	1,790	11.16	9.4		99.45
18	10,033	47.18	7.1		112.63
19	10,380	75.00	10.9	Upper Marker	113.00

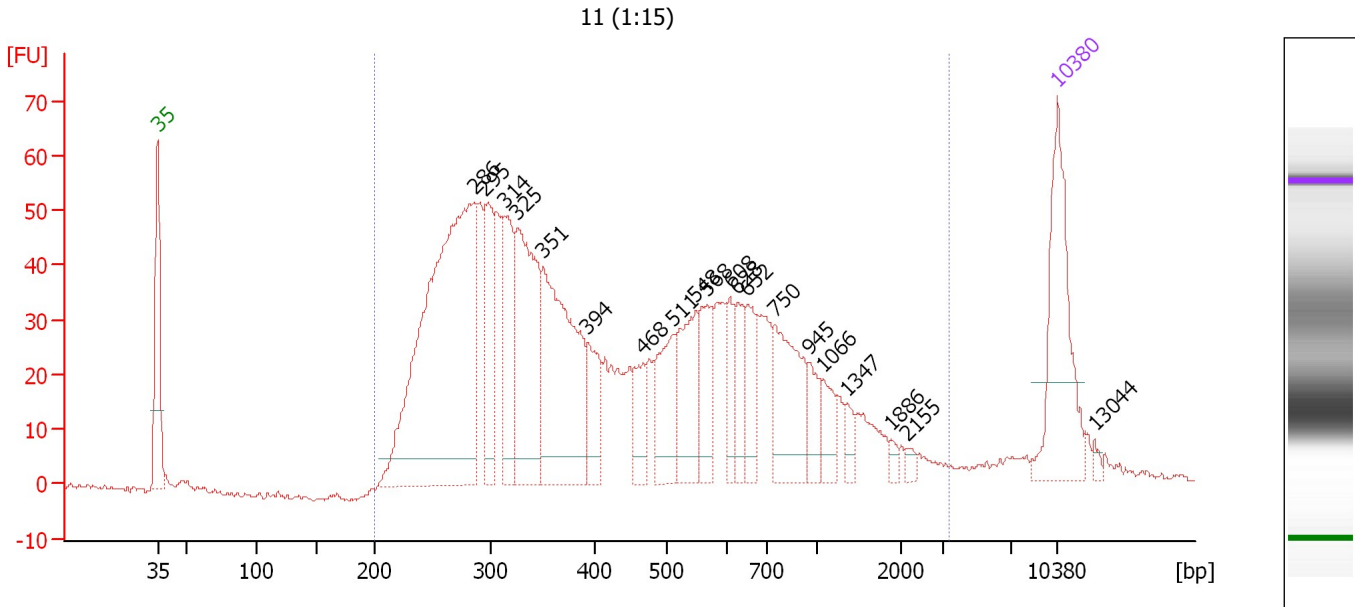
Region table for sample 3 : 10 (1:15)

From [bp]	Average Size [bp]	To [bp]	Corr. Area	% of Total	Size distribution in CV [%]	Conc. [pg/μl]	Molarity [pmol/l]	Color
200	517	4,636	1,613.9	96	84.1	3,157.05	13,284.0	Blue

Assay Class: High Sensitivity DNA Assay
 Data Path: C:\...ents and Settings\Bioanalyzer\2015-02-02\2015-02-02_003.xad

Created: 2/2/2015 12:21:42 PM
 Modified: 2/2/2015 1:20:41 PM

Electropherogram Summary Continued ...



Overall Results for sample 4 : 11 (1:15)

Number of peaks found: 20 Corr. Area 1: 1,542.8
 Noise: 0.6

Peak table for sample 4 : 11 (1:15)


Peak	Size [bp]	Conc. [pg/μl]	Molarity [pmol/l]	Observations	Aligned Migration Time [s]
1	35	125.00	5,411.3	Lower Marker	43.00
2	286	414.29	2,197.8		67.62
3	295	66.48	341.3		68.48
4	314	79.33	383.4		70.01
5	325	137.81	641.6		70.96
6	351	167.84	724.5		73.01
7	394	37.62	144.7		76.45
8	468	27.31	88.4		80.79
9	511	52.34	155.0		83.13
10	548	56.32	155.6		84.85
11	568	37.71	100.7		85.75
12	608	21.91	54.6		87.52
13	628	28.20	68.0		88.14
14	652	30.90	71.8		88.90
15	750	70.40	142.3		91.05
16	945	18.94	30.4		93.63
17	1,066	17.02	24.2		94.77
18	1,347	8.14	9.2		96.59
19	1,886	3.63	2.9		100.07
20	2,155	3.89	2.7		101.31
21	10,380	75.00	10.9	Upper Marker	113.00
22	13,044	0.00	0.0		115.86

Assay Class: High Sensitivity DNA Assay
Data Path: C:\...ents and Settings\Bioanalyzer\2015-02-02\2015-02-02_003.xad

Created: 2/2/2015 12:21:42 PM
Modified: 2/2/2015 1:20:41 PM

Electropherogram Summary Continued ...

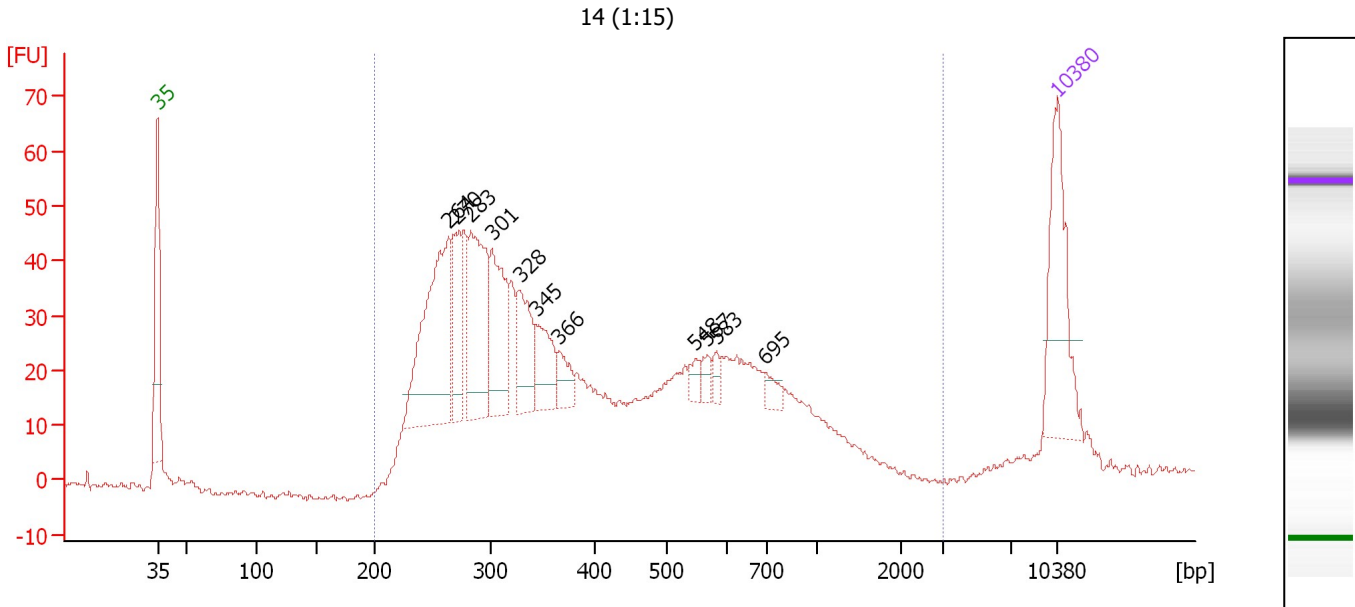
... Region table for sample 4 : 11 (1:15)

From [bp]	Average Size [bp]	To [bp]	Corr. Area	% of Total	Size distribution in CV [%]	Conc. [pg/ μ l]	Molarity [pmol/l]	Color
200	533	3,399	1,542.8	98	73.1	1,584.21	6,499.0	

Assay Class: High Sensitivity DNA Assay
 Data Path: C:\...ents and Settings\Bioanalyzer\2015-02-02\2015-02-02_003.xad

Created: 2/2/2015 12:21:42 PM
 Modified: 2/2/2015 1:20:41 PM

Electropherogram Summary Continued ...



Overall Results for sample 5 : 14 (1:15)

Number of peaks found: 11 Corr. Area 1: 1,095.7
 Noise: 0.6

Peak table for sample 5 : 14 (1:15)

Peak	Size [bp]	Conc. [pg/μl]	Molarity [pmol/l]	Observations	Aligned Migration Time [s]
1	35	125.00	5,411.3	Lower Marker	43.00
2	264	182.56	1,048.7		65.65
3	270	64.94	364.1		66.24
4	283	121.63	652.0		67.35
5	301	89.26	449.2		69.01
6	328	56.68	261.5		71.19
7	345	43.11	189.5		72.51
8	366	19.83	82.1		74.21
9	548	9.01	24.9		84.85
10	567	9.90	26.4		85.73
11	583	7.58	19.7		86.46
12	695	10.20	22.2		90.25
13	10,380	75.00	10.9	Upper Marker	113.00

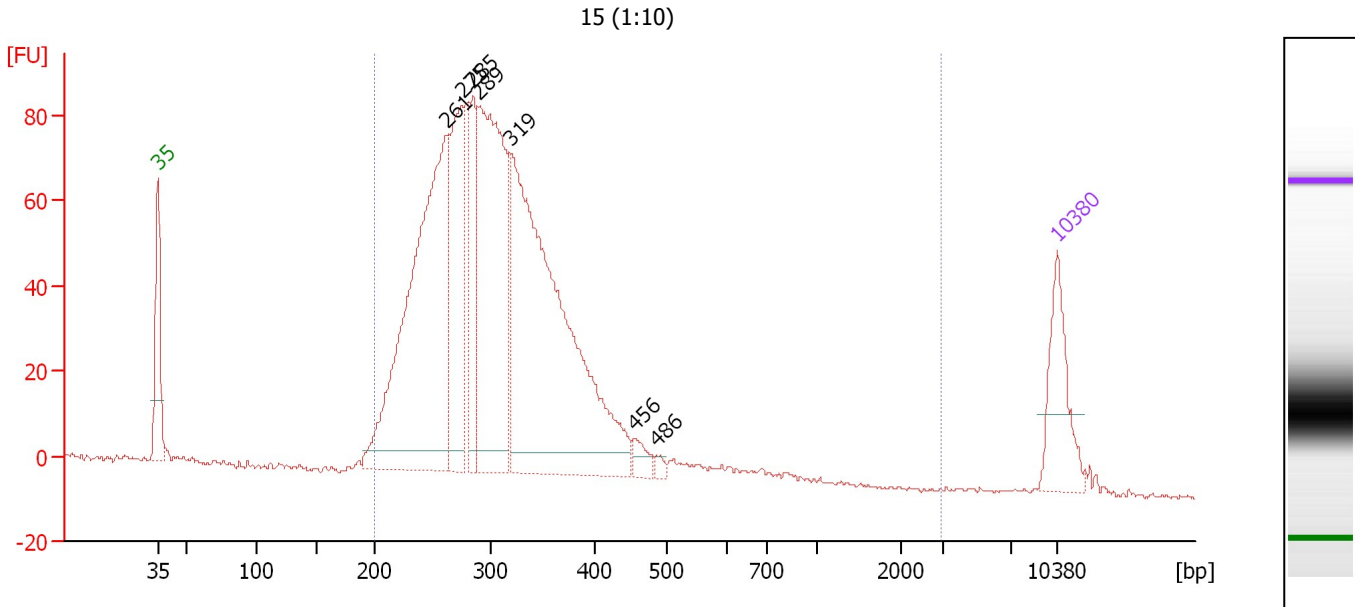
Region table for sample 5 : 14 (1:15)

From [bp]	Average Size [bp]	To [bp]	Corr. Area	% of Total	Size distribution in CV [%]	Conc. [pg/μl]	Molarity [pmol/l]	Color
200	453	3,073	1,095.7	98	55.2	1,456.08	6,335.3	Blue

Assay Class: High Sensitivity DNA Assay
 Data Path: C:\...ents and Settings\Bioanalyzer\2015-02-02\2015-02-02_003.xad

Created: 2/2/2015 12:21:42 PM
 Modified: 2/2/2015 1:20:41 PM

Electropherogram Summary Continued ...



Overall Results for sample 6 : 15 (1:10)

Number of peaks found: 7 Corr. Area 1: 1,539.2
 Noise: 0.4

Peak table for sample 6 : 15 (1:10)

Peak	Size [bp]	Conc. [pg/μl]	Molarity [pmol/l]	Observations	Aligned Migration Time [s]
1	35	125.00	5,411.3	Lower Marker	43.00
2	261	647.70	3,755.0		65.44
3	275	230.47	1,270.1		66.66
4	285	126.95	675.6		67.54
5	289	454.40	2,381.8		67.93
6	319	733.84	3,480.6		70.48
7	456	19.51	64.8		80.13
8	486	7.26	22.6		81.80
9	10,380	75.00	10.9	Upper Marker	113.00

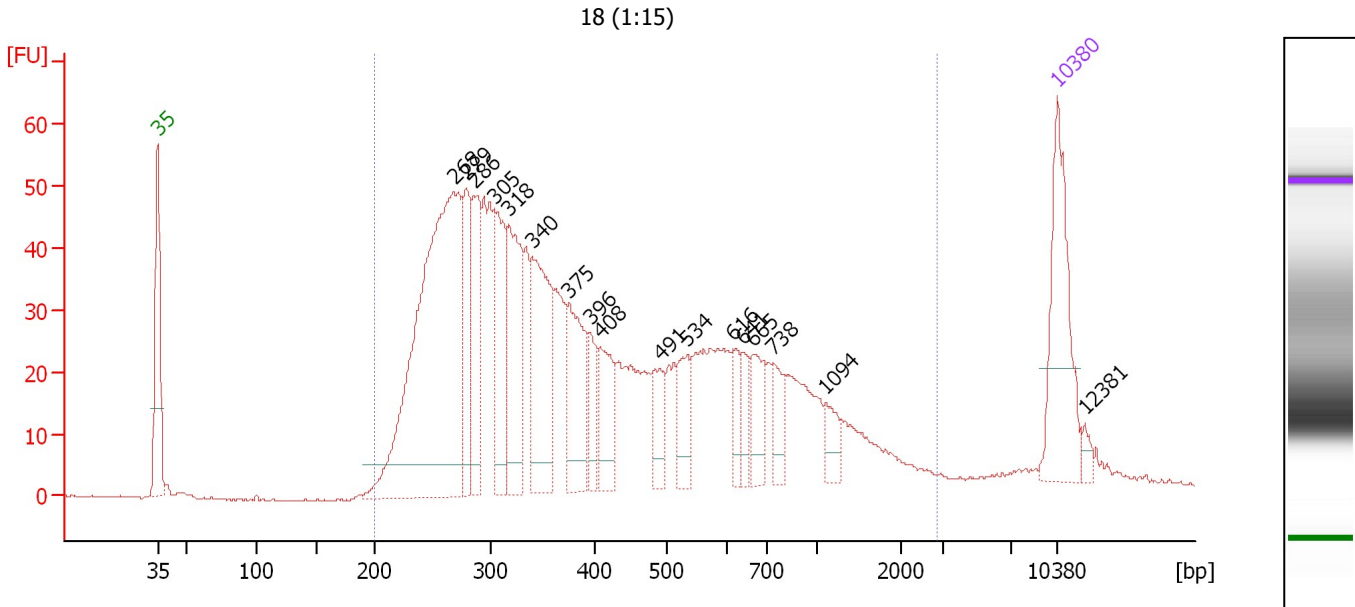
Region table for sample 6 : 15 (1:10)

From [bp]	Average Size [bp]	To [bp]	Corr. Area	% of Total	Size distribution in CV [%]	Conc. [pg/μl]	Molarity [pmol/l]	Color
200	311	2,974	1,539.2	99	23.7	2,265.18	11,646.6	Blue

Assay Class: High Sensitivity DNA Assay
 Data Path: C:\...ents and Settings\Bioanalyzer\2015-02-02\2015-02-02_003.xad

Created: 2/2/2015 12:21:42 PM
 Modified: 2/2/2015 1:20:41 PM

Electropherogram Summary Continued ...



Overall Results for sample 7 : 18 (1:15)

Number of peaks found: 17 Corr. Area 1: 1,381.7
 Noise: 0.2

Peak table for sample 7 : 18 (1:15)

Peak	Size [bp]	Conc. [pg/μl]	Molarity [pmol/l]	Observations	Aligned Migration Time [s]
1	35	125.00	5,411.3	Lower Marker	43.00
2	268	430.47	2,432.2		66.05
3	279	73.67	399.7		67.05
4	286	76.65	406.2		67.65
5	305	81.25	403.9		69.30
6	318	106.03	505.5		70.35
7	340	116.62	519.3		72.15
8	375	77.18	311.7		74.95
9	396	26.14	99.9		76.65
10	408	46.41	172.3		77.40
11	491	29.02	89.5		82.10
12	534	31.26	88.6		84.20
13	616	18.51	45.6		87.75
14	641	18.02	42.6		88.55
15	665	29.68	67.6		89.30
16	738	23.79	48.8		90.90
17	1,094	16.99	23.5		94.95
18	10,380	75.00	10.9	Upper Marker	113.00
19	12,381	0.00	0.0		115.15

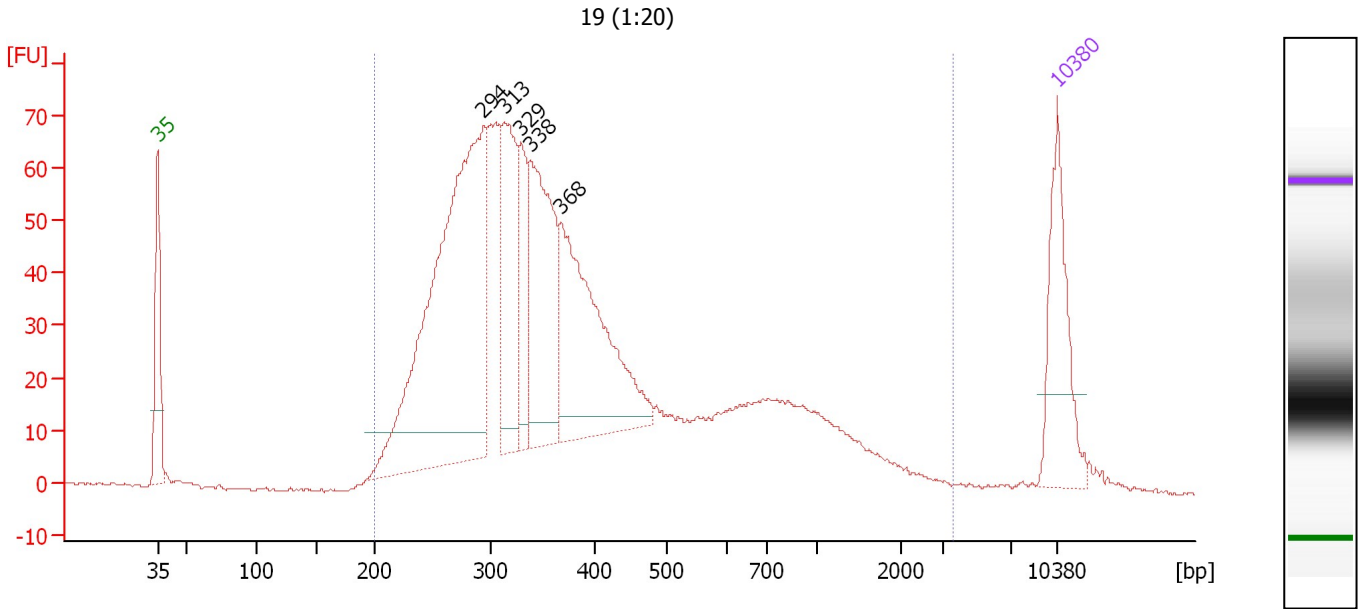
Region table for sample 7 : 18 (1:15)

From [bp]	Average Size [bp]	To [bp]	Corr. Area	% of Total	Size distribution in CV [%]	Conc. [pg/μl]	Molarity [pmol/l]	Color
200	500	2,842	1,381.7	96	72.3	1,779.17	7,612.7	Blue

Assay Class: High Sensitivity DNA Assay
 Data Path: C:\...ents and Settings\Bioanalyzer\2015-02-02\2015-02-02_003.xad

Created: 2/2/2015 12:21:42 PM
 Modified: 2/2/2015 1:20:41 PM

Electropherogram Summary Continued ...



Overall Results for sample 8 : 19 (1:20)

Number of peaks found: 5 Corr. Area 1: 1,637.5
 Noise: 0.3

Peak table for sample 8 : 19 (1:20)

Peak	Size [bp]	Conc. [pg/μl]	Molarity [pmol/l]	Observations	Aligned Migration Time [s]
1	35	125.00	5,411.3	Lower Marker	43.00
2	294	513.67	2,651.0		68.34
3	313	133.08	644.6		69.95
4	329	68.76	316.6		71.25
5	338	186.12	834.8		71.95
6	368	222.27	915.6		74.36
7	10,380	75.00	10.9	Upper Marker	113.00

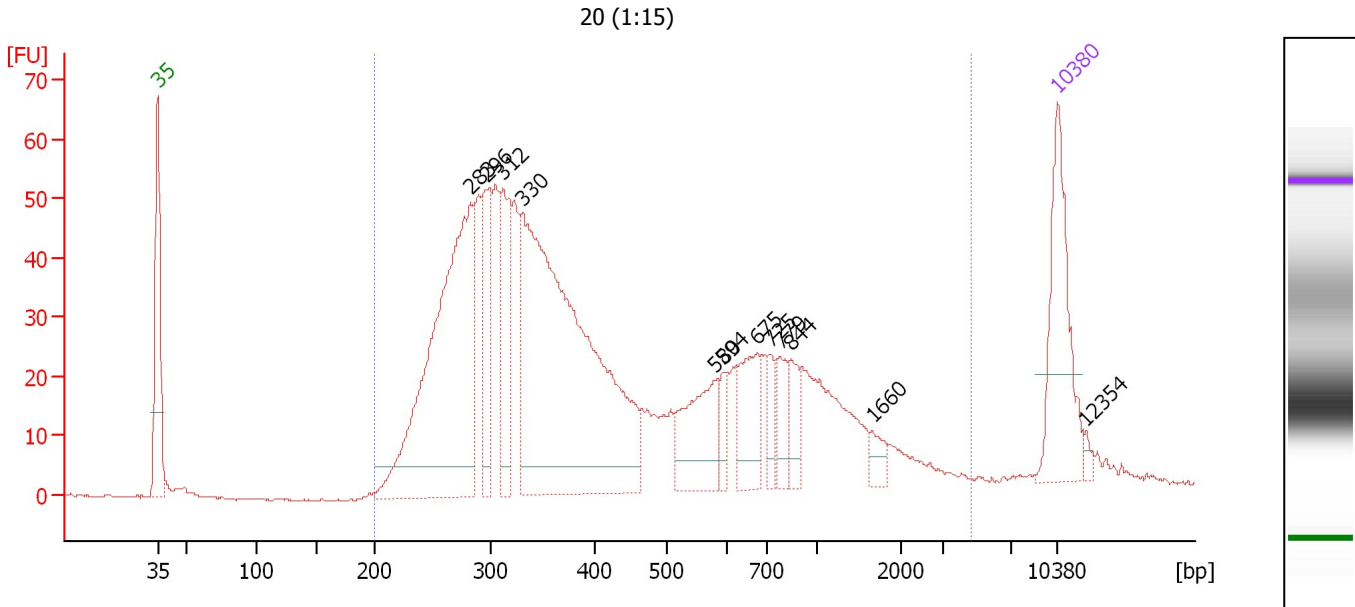
Region table for sample 8 : 19 (1:20)

From [bp]	Average Size [bp]	To [bp]	Corr. Area	% of Total	Size distribution in CV [%]	Conc. [pg/μl]	Molarity [pmol/l]	Color
200	465	3,573	1,637.5	98	77.0	1,779.29	7,866.6	Blue

Assay Class: High Sensitivity DNA Assay
 Data Path: C:\...ents and Settings\Bioanalyzer\2015-02-02\2015-02-02_003.xad

Created: 2/2/2015 12:21:42 PM
 Modified: 2/2/2015 1:20:41 PM

Electropherogram Summary Continued ...



Overall Results for sample 9 : 20 (1:15)

Number of peaks found: 12 Corr. Area 1: 1,297.6
 Noise: 0.2

Peak table for sample 9 : 20 (1:15)

Peak	Size [bp]	Conc. [pg/μl]	Molarity [pmol/l]	Observations	Aligned Migration Time [s]
1	35	125.00	5,411.3	Lower Marker	43.00
2	283	357.85	1,919.1		67.34
3	296	70.87	362.8		68.56
4	312	81.19	394.5		69.87
5	330	491.55	2,256.4		71.33
6	580	66.69	174.2		86.33
7	594	15.75	40.2		86.99
8	675	50.45	113.2		89.62
9	725	17.77	37.1		90.73
10	779	23.27	45.3		91.43
11	844	22.83	41.0		92.29
12	1,660	10.62	9.7		98.61
13	10,380	75.00	10.9	Upper Marker	113.00
14	12,354	0.00	0.0		115.12

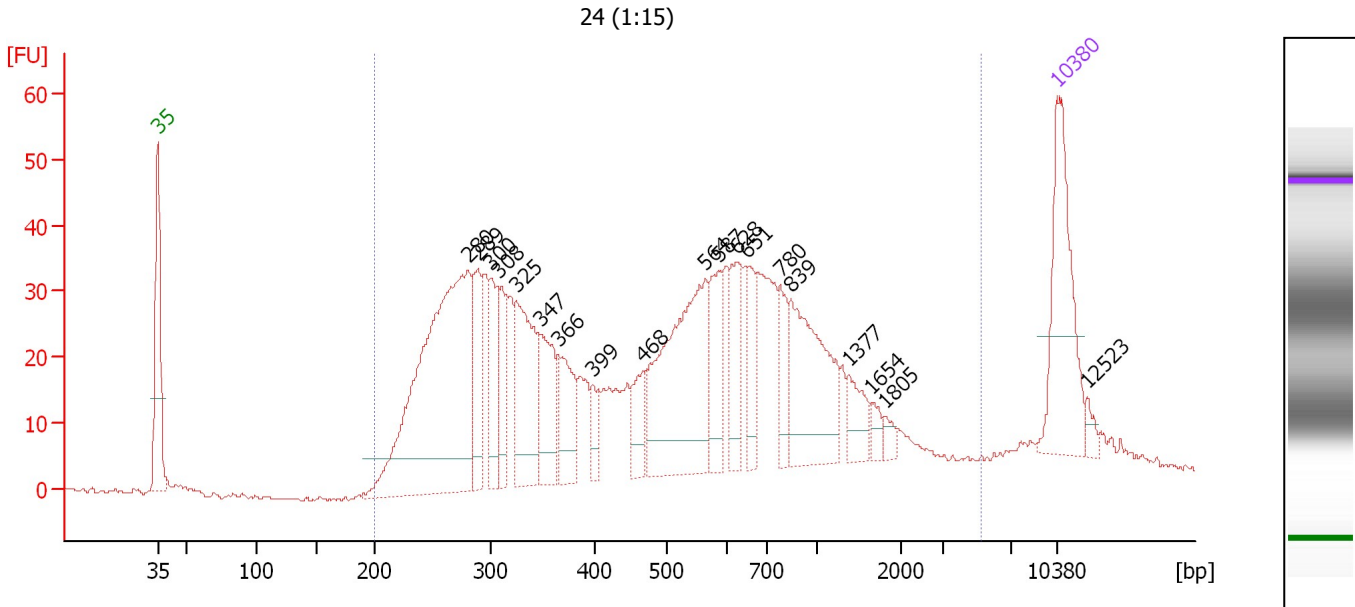
Region table for sample 9 : 20 (1:15)

From [bp]	Average Size [bp]	To [bp]	Corr. Area	% of Total	Size distribution in CV [%]	Conc. [pg/μl]	Molarity [pmol/l]	Color
200	555	4,656	1,297.6	97	86.5	1,553.17	6,407.0	Blue

Assay Class: High Sensitivity DNA Assay
 Data Path: C:\...ents and Settings\Bioanalyzer\2015-02-02\2015-02-02_003.xad

Created: 2/2/2015 12:21:42 PM
 Modified: 2/2/2015 1:20:41 PM

Electropherogram Summary Continued ...



Overall Results for sample 10 : 24 (1:15)

Number of peaks found: 19 Corr. Area 1: 1,184.1
 Noise: 0.3

Peak table for sample 10 : 24 (1:15)

Peak	Size [bp]	Conc. [pg/μl]	Molarity [pmol/l]	Observations	Aligned Migration Time [s]
1	35	125.00	5,411.3	Lower Marker	43.00
2	280	331.96	1,793.8		67.15
3	289	46.36	243.1		67.92
4	300	46.23	233.3		68.94
5	308	40.44	199.0		69.56
6	325	86.50	403.1		70.94
7	347	54.81	239.0		72.73
8	366	46.74	193.5		74.21
9	399	15.51	58.9		76.87
10	468	27.76	89.8		80.81
11	564	151.32	406.6		85.57
12	587	38.91	100.5		86.65
13	628	37.85	91.4		88.13
14	651	30.77	71.7		88.85
15	780	25.48	49.5		91.46
16	839	95.62	172.7		92.23
17	1,377	21.14	23.3		96.78
18	1,654	7.59	7.0		98.57
19	1,805	5.80	4.9		99.54
20	10,380	75.00	10.9	Upper Marker	113.00
21	12,523	0.00	0.0		115.30

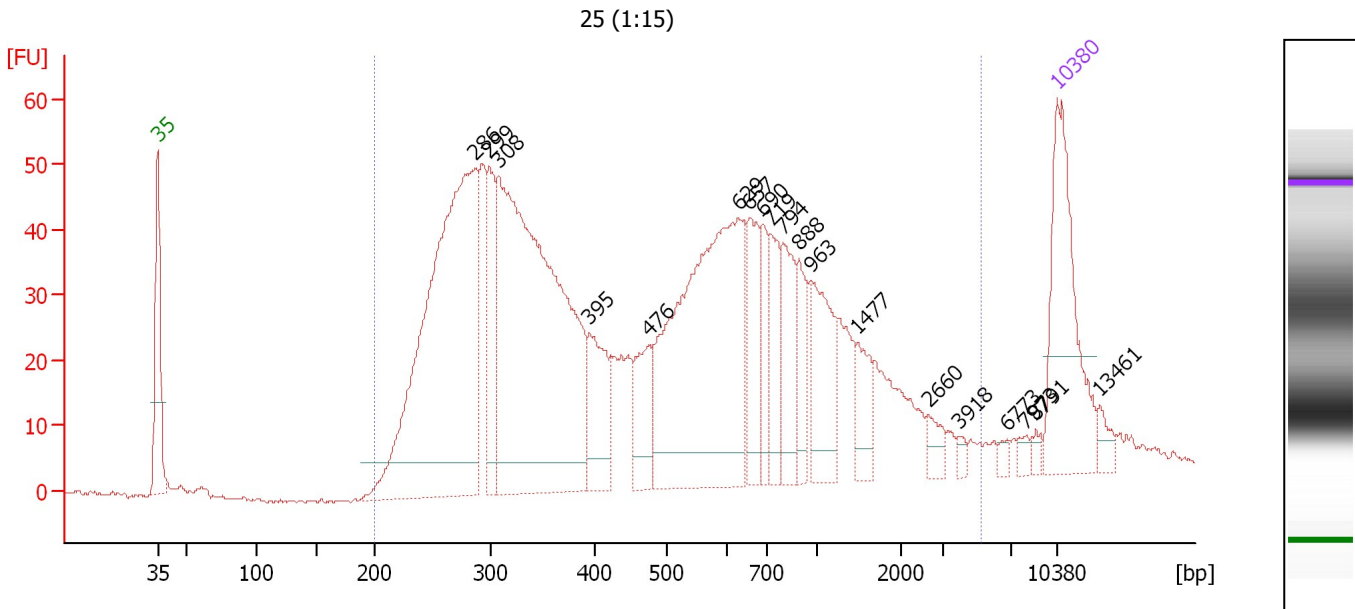
Region table for sample 10 : 24 (1:15)

From [bp]	Average Size [bp]	To [bp]	Corr. Area	% of Total	Size distribution in CV [%]	Conc. [pg/μl]	Molarity [pmol/l]	Color
200	655	5,295	1,184.1	95	89.4	1,483.67	5,594.1	Blue

Assay Class: High Sensitivity DNA Assay
 Data Path: C:\...ents and Settings\Bioanalyzer\2015-02-02\2015-02-02_003.xad

Created: 2/2/2015 12:21:42 PM
 Modified: 2/2/2015 1:20:41 PM

Electropherogram Summary Continued ...



Overall Results for sample 11 : 25 (1:15)

Number of peaks found: 19 Corr. Area 1: 1,599.1
 Noise: 0.4

Peak table for sample 11 : 25 (1:15)

Peak	Size [bp]	Conc. [pg/μl]	Molarity [pmol/l]	Observations	Aligned Migration Time [s]
1	35	125.00	5,411.3	Lower Marker	43.00
2	286	375.80	1,989.3		67.68
3	299	53.22	269.8		68.82
4	308	402.25	1,980.4		69.54
5	395	50.42	193.2		76.58
6	476	36.54	116.3		81.23
7	629	237.70	572.7		88.17
8	657	42.58	98.2		89.05
9	690	27.07	59.5		90.08
10	719	33.41	70.4		90.65
11	794	39.18	74.8		91.63
12	888	26.39	45.0		92.87
13	963	48.92	77.0		93.86
14	1,477	21.02	21.6		97.43
15	2,660	8.71	5.0		102.96
16	3,918	3.49	1.3		105.29
17	6,773	3.37	0.8		109.07
18	7,973	3.95	0.8		110.41
19	8,791	2.70	0.5		111.29
20	10,380	75.00	10.9	Upper Marker	113.00
21	13,461	0.00	0.0		116.31

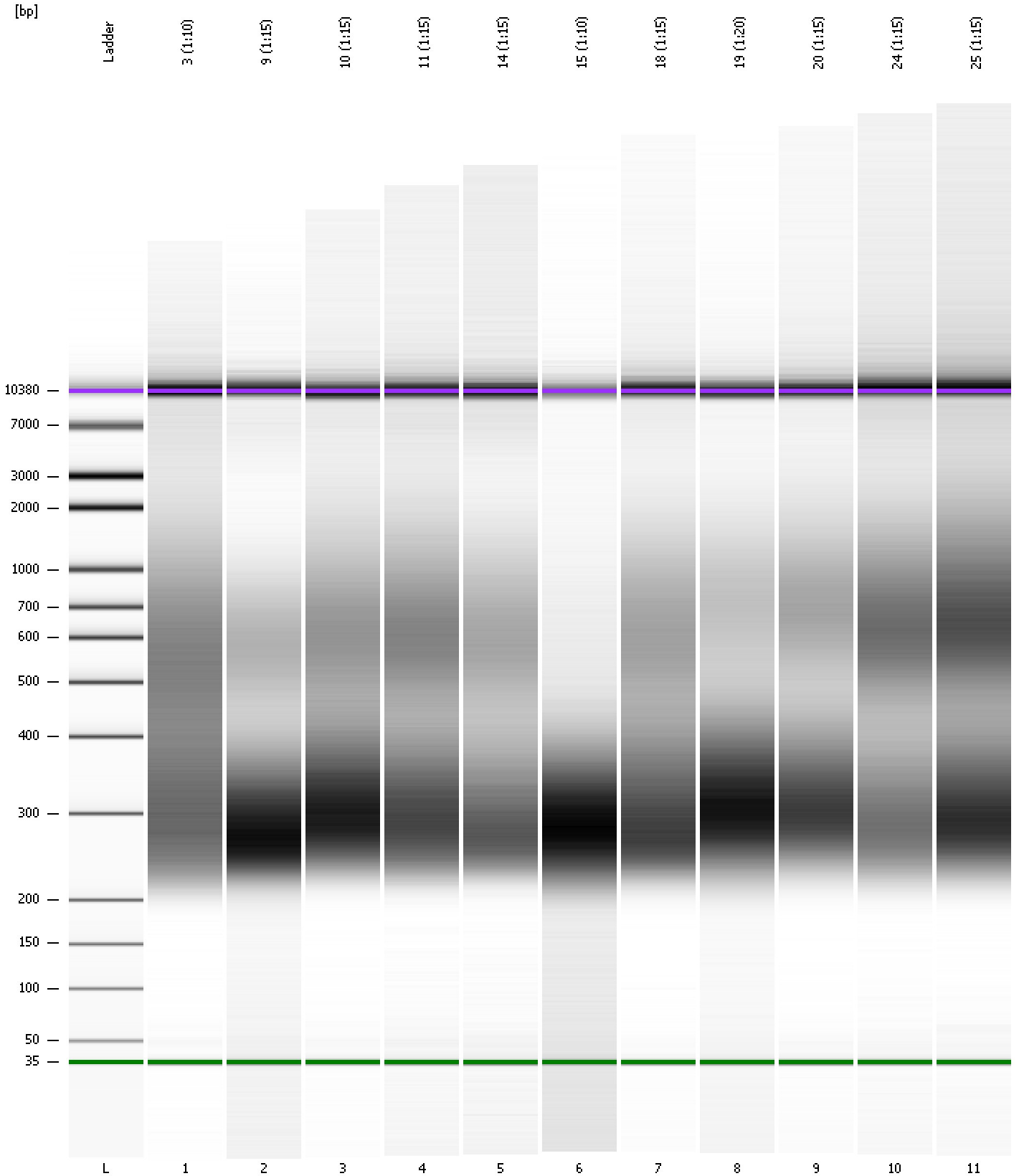
Region table for sample 11 : 25 (1:15)

From [bp]	Average Size [bp]	To [bp]	Corr. Area	% of Total	Size distribution in CV [%]	Conc. [pg/μl]	Molarity [pmol/l]	Color
200	684	5,306	1,599.1	95	95.1	1,569.70	5,952.6	Blue

Assay Class: High Sensitivity DNA Assay
Data Path: C:\...ents and Settings\Bioanalyzer\2015-02-02\2015-02-02_003.xad

Created: 2/2/2015 12:21:42 PM
Modified: 2/2/2015 1:20:41 PM

Gel Image



Assay Class: High Sensitivity DNA Assay
 Data Path: C:\...ents and Settings\Bioanalyzer\2015-02-02\2015-02-02_003.xad

Created: 2/2/2015 12:21:42 PM
 Modified: 2/2/2015 1:20:41 PM

Run Logbook

Description	Number	Source	Category	Sub Category	Time	Time Zone	User	Host
Run ended on port 1 (Number of wells acquired: 12)		Instrument	Run		2/2/2015 1:03:00 PM	(GMT --08:00) Pacific Standard Time	UC Davis	D8XSMGH1
Run started on port 1 (File: C:\Documents and Settings\Bioanalyzer\2015-02-02\2015-02-02_003.xad)		Instrument	Run		2/2/2015 12:21:48 PM	(GMT --08:00) Pacific Standard Time	UC Davis	D8XSMGH1
Product Number : G2938B		Instrument	Run		2/2/2015 12:21:48 PM	(GMT --08:00) Pacific Standard Time	UC Davis	D8XSMGH1
Name :		Instrument	Run		2/2/2015 12:21:48 PM	(GMT --08:00) Pacific Standard Time	UC Davis	D8XSMGH1
Vendor : Agilent Technologies		Instrument	Run		2/2/2015 12:21:48 PM	(GMT --08:00) Pacific Standard Time	UC Davis	D8XSMGH1
Serial# : DE13701086		Instrument	Run		2/2/2015 12:21:48 PM	(GMT --08:00) Pacific Standard Time	UC Davis	D8XSMGH1
Firmware : C.01.069		Instrument	Run		2/2/2015 12:21:48 PM	(GMT --08:00) Pacific Standard Time	UC Davis	D8XSMGH1
Cartridge : Electrode		Instrument	Run		2/2/2015 12:21:48 PM	(GMT --08:00) Pacific Standard Time	UC Davis	D8XSMGH1