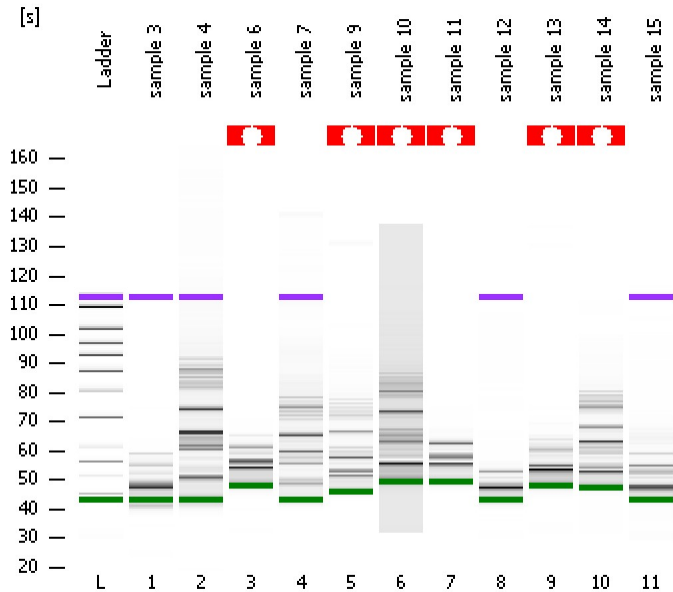


Assay Class: High Sensitivity DNA Assay
Data Path: C:\...ents and Settings\Bioanalyzer\2015-02-06\2015-02-06_001.xad

Created: 2/6/2015 9:16:12 AM
Modified: 2/6/2015 10:18:44 AM

Electrophoresis File Run Summary



Instrument Information:

Instrument Name: DE13701086 Firmware: C.01.069
Serial#: DE13701086 Type: G2938B

Assay Information:

Assay Origin Path: C:\Program Files\Agilent\2100 bioanalyzer\2100 expert\assays\dsDNA\High Sensitivity DNA.xsy
Assay Class: High Sensitivity DNA Assay
Version: 1.03
Assay Comments: Copyright © 2003-2010 Agilent Technologies

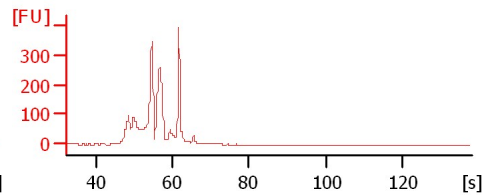
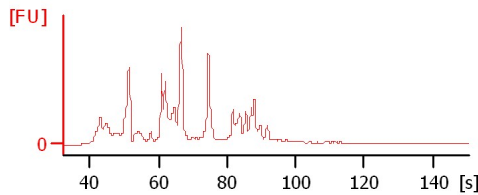
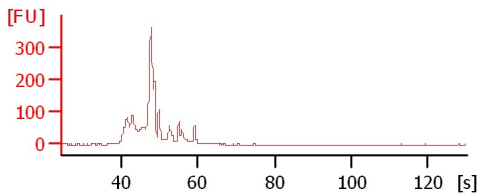
Chip Information:

Chip Lot #:
Reagent Kit Lot #:
Chip Comments:

sample 3

sample 4

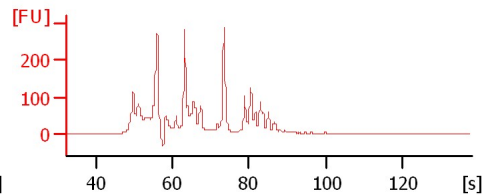
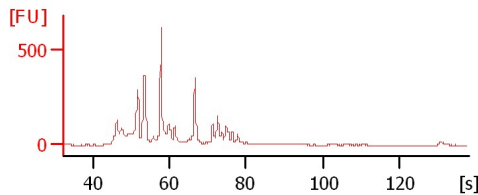
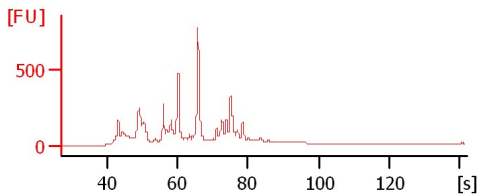
sample 6



sample 7

sample 9

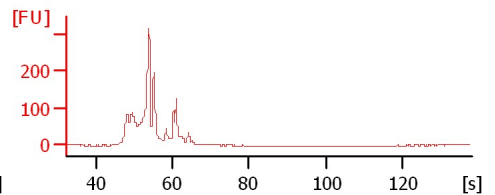
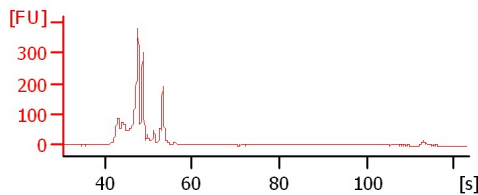
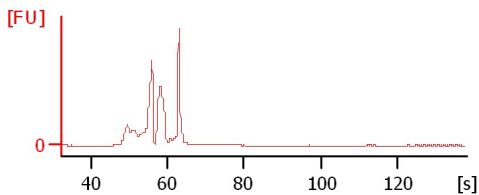
sample 10



sample 11

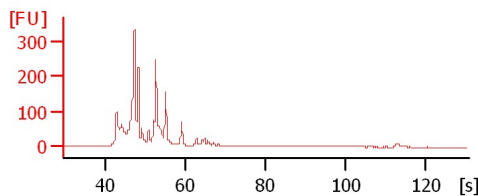
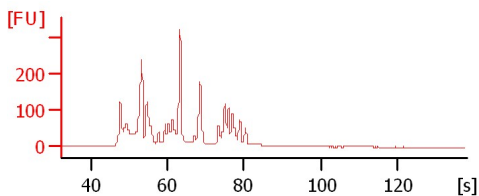
sample 12

sample 13



sample 14

sample 15



Assay Class: High Sensitivity DNA Assay
 Data Path: C:\...ents and Settings\Bioanalyzer\2015-02-06\2015-02-06_001.xad

Created: 2/6/2015 9:16:12 AM
 Modified: 2/6/2015 10:18:44 AM

Electrophoresis File Run Summary (Chip Summary)

Sample Name	Sample Comment	Rest. Digest	Status	Observation	Result Label	Result Color
sample 3		<input type="checkbox"/>	✓			
sample 4		<input type="checkbox"/>	✓			
sample 6		<input type="checkbox"/>	✓			
sample 7		<input type="checkbox"/>	✓			
sample 9		<input type="checkbox"/>	✓			
sample 10		<input type="checkbox"/>	✓			
sample 11		<input type="checkbox"/>	✓			
sample 12		<input type="checkbox"/>	✓			
sample 13		<input type="checkbox"/>	✓			
sample 14		<input type="checkbox"/>	✓			
sample 15		<input type="checkbox"/>	✓			
Ladder		<input type="checkbox"/>	✓			

Chip Lot #

Reagent Kit Lot #

Chip Comments :

Assay Class: High Sensitivity DNA Assay
Data Path: C:\...ents and Settings\Bioanalyzer\2015-02-06\2015-02-06_001.xad

Created: 2/6/2015 9:16:12 AM
Modified: 2/6/2015 10:18:44 AM

Electrophoresis Assay Details

General Analysis Settings

Number of Available Sample and Ladder Wells (Max.) : 12
Minimum Visible Range [s] : 32
Maximum Visible Range [s] : 138
Start Analysis Time Range [s] : 33
End Analysis Time Range [s] : 137.5
Ladder Concentration [pg/ μ l] : 1950
Uses Standard Area for Ladder Fragments
Lower Marker Concentration [pg/ μ l] : 125
Upper Marker Concentration [pg/ μ l] : 75
Used Upper Marker for Quantitation
Standard Curve Fit is Point to Point
Show Data Aligned to Lower and Upper Marker

Integrator Settings

Integration Start Time [s] : 33.05
Integration End Time [s] : 137
Slope Threshold : 0.8
Height Threshold [FU] : 5
Area Threshold : 0.1
Width Threshold [s] : 0.6
Baseline Plateau [s] : 0.5

Filter Settings

Filter Width [s] : 0.5
Polynomial Order : 4

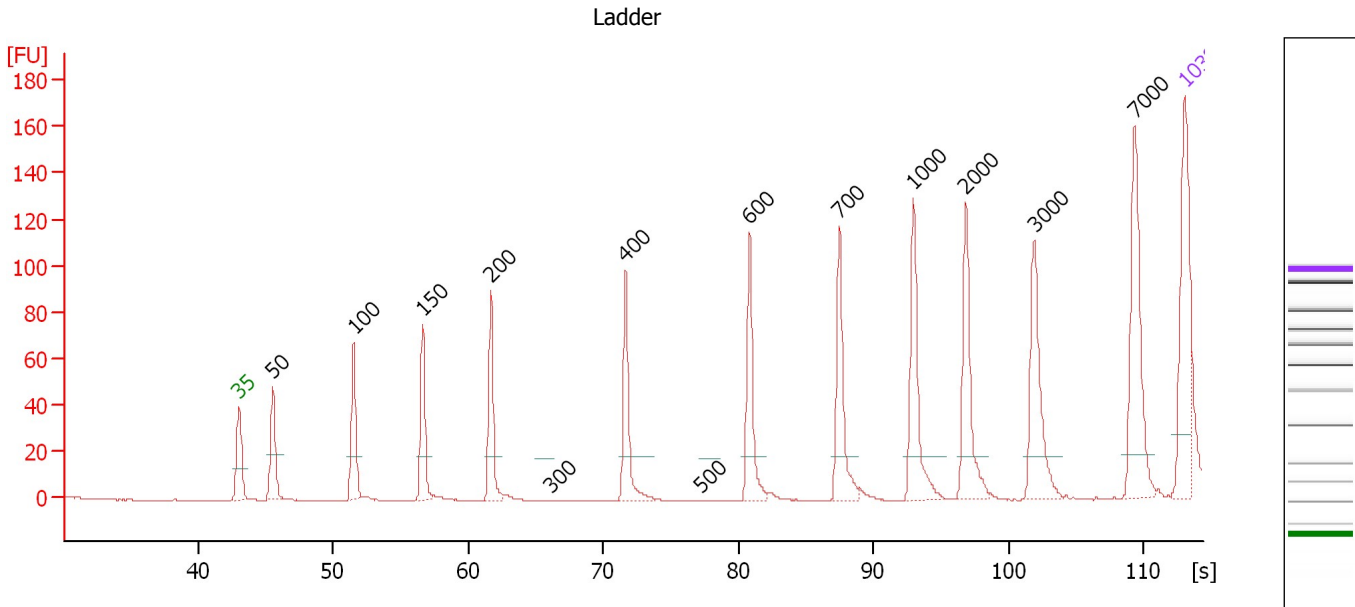
Ladder

Ladder Peak	Size	Area
1	35	160
2	50	210
3	100	208
4	150	221
5	200	242
6	300	270
7	400	305
8	500	306
9	600	336
10	700	321
11	1000	366
12	2000	413
13	3000	411
14	7000	400
15	10380	214

Assay Class: High Sensitivity DNA Assay
 Data Path: C:\...ents and Settings\Bioanalyzer\2015-02-06\2015-02-06_001.xad

Created: 2/6/2015 9:16:12 AM
 Modified: 2/6/2015 10:18:44 AM

Electropherogram Summary



Overall Results for Ladder

Noise: 0.1

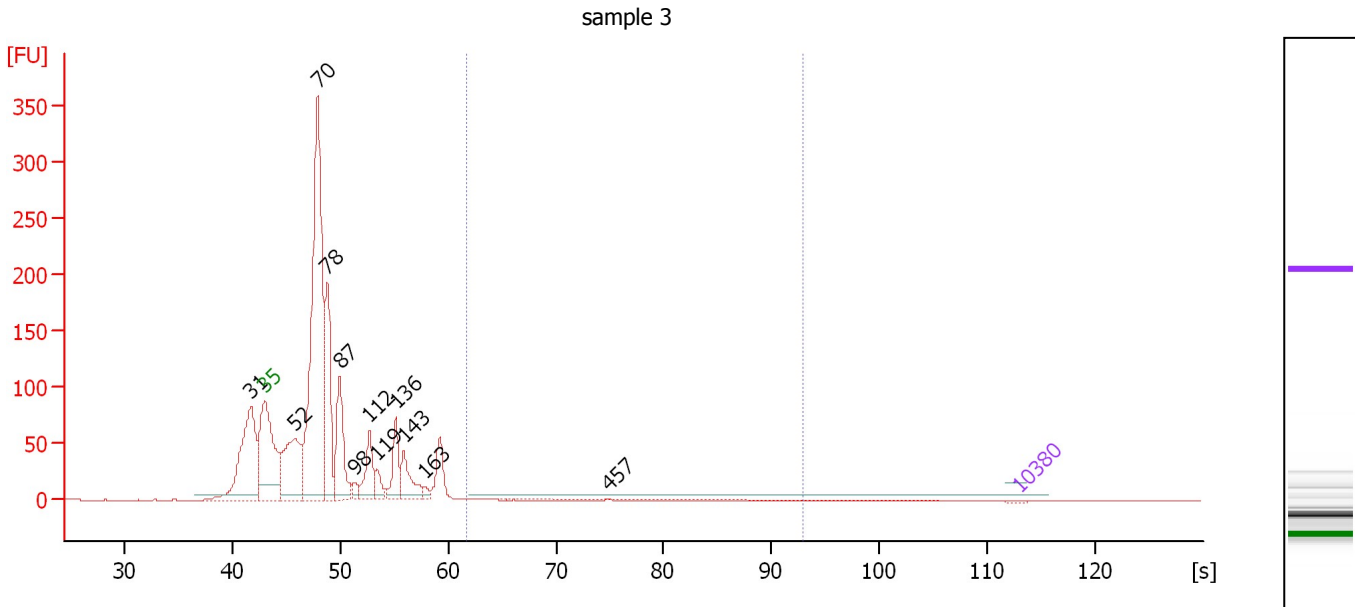
Peak table for Ladder

Peak	Size [bp]	Conc. [pg/μl]	Molarity [pmol/l]	Observations	Aligned Migration Time [s]
1	35	125.00	5,411.3	Lower Marker	43.00
2	50	150.00	4,545.5	Ladder Peak	45.50
3	100	150.00	2,272.7	Ladder Peak	51.51
4	150	150.00	1,515.2	Ladder Peak	56.59
5	200	150.00	1,136.4	Ladder Peak	61.64
6	300	150.00	757.6	Ladder Peak	66.06
7	400	150.00	568.2	Ladder Peak	71.62
8	500	150.00	454.5	Ladder Peak	77.26
9	600	150.00	378.8	Ladder Peak	80.80
10	700	150.00	324.7	Ladder Peak	87.44
11	1,000	150.00	227.3	Ladder Peak	92.93
12	2,000	150.00	113.6	Ladder Peak	96.82
13	3,000	150.00	75.8	Ladder Peak	101.87
14	7,000	150.00	32.5	Ladder Peak	109.30
15	10,380	75.00	10.9	Upper Marker	113.00

Assay Class: High Sensitivity DNA Assay
 Data Path: C:\...ents and Settings\Bioanalyzer\2015-02-06\2015-02-06_001.xad

Created: 2/6/2015 9:16:12 AM
 Modified: 2/6/2015 10:18:44 AM

Electropherogram Summary Continued ...



Overall Results for sample 1 : sample 3

Number of peaks found: 12 Corr. Area 1: 3.3
 Noise: 0.2

Peak table for sample 1 : sample 3

Peak	Size [bp]	Conc. [pg/μl]	Molarity [pmol/l]	Observations	Aligned Migration Time [s]
1	31	0.00	0.0		41.76
2	35	125.00	5,411.3	Lower Marker	43.00
3	52	12,125.70	350,856.3		45.79
4	70	48,644.01	1,049,937.1		47.93
5	78	13,323.83	259,939.5		48.83
6	87	10,021.97	174,134.5		49.97
7	98	1,061.24	16,341.0		51.31
8	112	5,301.60	71,842.1		52.71
9	119	1,846.31	23,478.3		53.46
10	136	4,633.40	51,701.8		55.15
11	143	4,612.29	48,827.4		55.89
12	163	604.11	5,622.6		57.89
13	457	29.82	99.0		74.81
14	10,380	75.00	10.9	Upper Marker	113.00

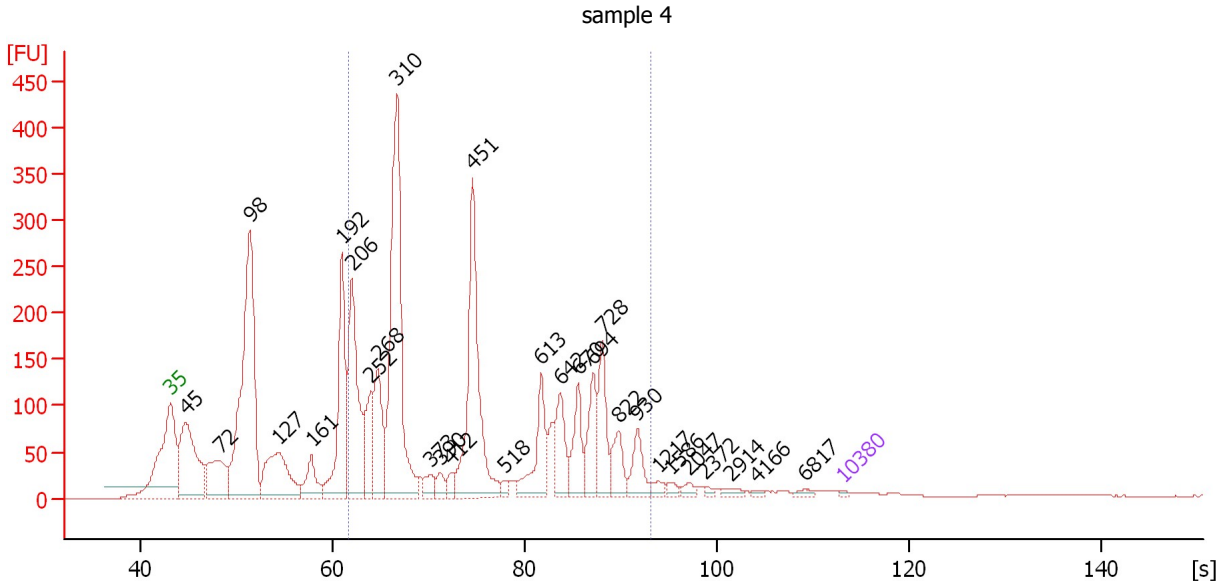
Region table for sample 1 : sample 3

From [bp]	Average Size [bp]	To [bp]	Corr. Area	% of Total	Size distribution in CV [%]	Conc. [pg/μl]	Molarity [pmol/l]	Color
200	296	1,000	3.3	0	35.2	175.83	1,030.3	Blue

Assay Class: High Sensitivity DNA Assay
 Data Path: C:\...ents and Settings\Bioanalyzer\2015-02-06\2015-02-06_001.xad

Created: 2/6/2015 9:16:12 AM
 Modified: 2/6/2015 10:18:44 AM

Electropherogram Summary Continued ...



Overall Results for sample 2 : sample 4

Number of peaks found: 29 Corr. Area 1: 2,579.0
 Noise: 0.2

Peak table for sample 2 : sample 4

Peak	Size [bp]	Conc. [pg/μl]	Molarity [pmol/l]	Observations	Aligned Migration Time [s]
1	35	125.00	5,411.3	Lower Marker	43.00
2	45	8,993.20	303,904.4		44.64
3	72	4,497.57	94,045.8		48.20
4	98	20,855.80	322,085.9		51.28
5	127	6,324.61	75,243.5		54.29
6	161	2,345.08	22,060.5		57.71
7	192	8,513.00	67,095.9		60.86
8	206	9,843.21	72,572.8		61.89
9	252	3,124.24	18,782.4		63.94
10	268	4,752.31	26,914.0		64.62
11	310	16,865.54	82,453.4		66.61
12	373	777.96	3,163.3		70.10
13	390	691.88	2,689.1		71.05
14	412	563.74	2,074.2		72.29
15	451	10,919.93	36,718.7		74.48
16	518	388.26	1,135.9		77.90
17	613	3,406.24	8,420.1		81.66
18	642	2,694.33	6,360.8		83.58
19	670	2,657.53	6,013.2		85.42
20	694	2,832.95	6,181.7		87.07
21	728	3,131.42	6,515.6		87.96
22	822	1,822.88	3,361.1		89.67
23	930	1,687.06	2,747.8		91.65
24	1,217	403.25	502.0		93.77
25	1,586	334.47	319.5		95.21

Assay Class: High Sensitivity DNA Assay
 Data Path: C:\...ents and Settings\Bioanalyzer\2015-02-06\2015-02-06_001.xad


Created: 2/6/2015 9:16:12 AM
 Modified: 2/6/2015 10:18:44 AM

Electropherogram Summary Continued ...

... Peak table for sample 2 : sample 4

Peak	Size [bp]	Conc. [pg/μl]	Molarity [pmol/l]	Observations	Aligned Migration Time [s]
26	2,047	303.37	224.6		97.06
27	2,372	138.09	88.2		98.70
28	2,914	299.34	155.6		101.44
29	4,166	137.39	50.0		104.04
30	6,817	210.91	46.9		108.96
31	10,380	75.00	10.9	Upper Marker	113.00

Region table for sample 2 : sample 4

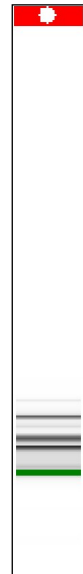
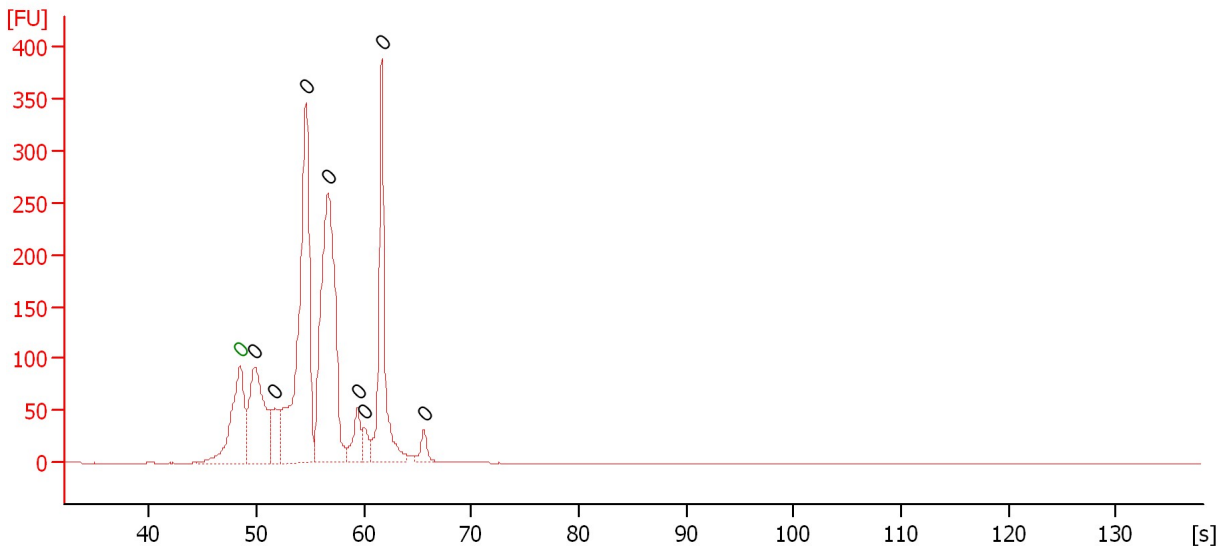
From [bp]	Average Size [bp]	To [bp]	Corr. Area	% of Total	Size distribution in CV [%]	Conc. [pg/μl]	Molarity [pmol/l]	Color
200	471	1,000	2,579.0	61	43.0	67,079.73	279,471.4	

Assay Class: High Sensitivity DNA Assay
 Data Path: C:\...ents and Settings\Bioanalyzer\2015-02-06\2015-02-06_001.xad

Created: 2/6/2015 9:16:12 AM
 Modified: 2/6/2015 10:18:44 AM

Electropherogram Summary Continued ...

sample 6



Overall Results for sample 3 : sample 6

Number of peaks found: 8 Noise: 0.1

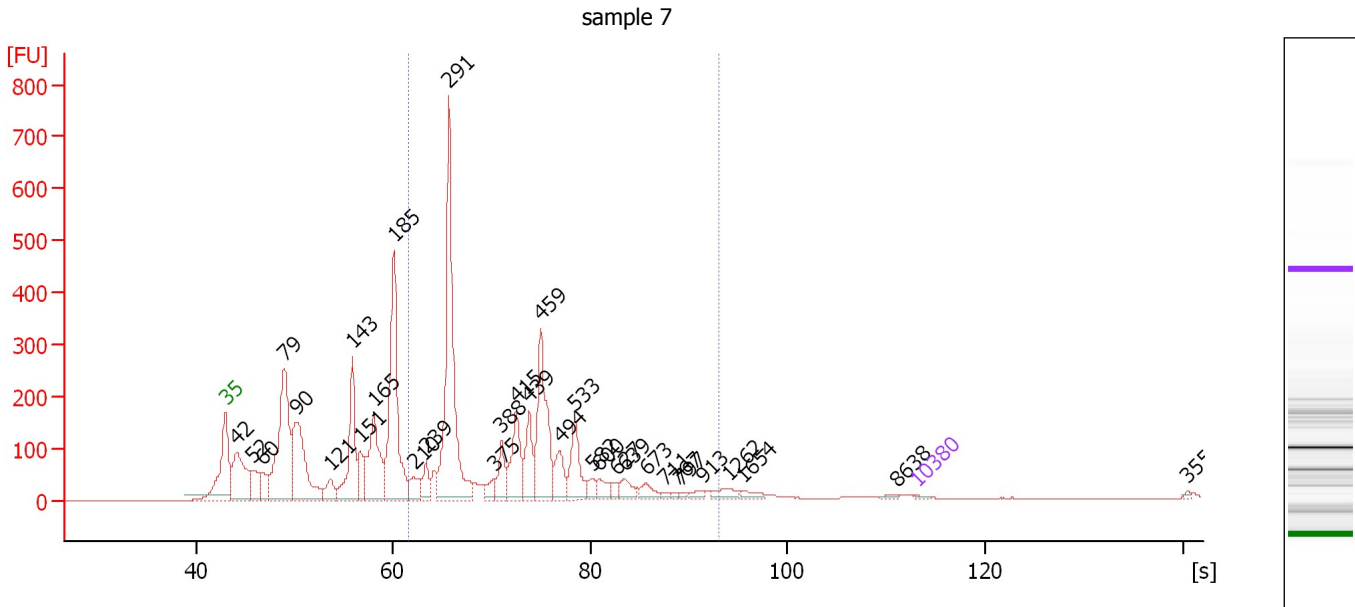
Peak table for sample 3 : sample 6

Peak	Size [bp]	Conc. [pg/μl]	Molarity [pmol/l]	Observations	Aligned Migration Time [s]
1	0	0.00	0.0	Lower Marker	48.45
2	0	0.00	0.0		49.85
3	0	0.00	0.0		51.70
4	0	0.00	0.0		54.60
5	0	0.00	0.0		56.65
6	0	0.00	0.0		59.40
7	0	0.00	0.0		60.05
8	0	0.00	0.0		61.65
9	0	0.00	0.0		65.55

Assay Class: High Sensitivity DNA Assay
 Data Path: C:\...ents and Settings\Bioanalyzer\2015-02-06\2015-02-06_001.xad

Created: 2/6/2015 9:16:12 AM
 Modified: 2/6/2015 10:18:44 AM

Electropherogram Summary Continued ...



Overall Results for sample 4 : sample 7

Number of peaks found: 33 Corr. Area 1: 2,612.4
 Noise: 0.2

Peak table for sample 4 : sample 7

Peak	Size [bp]	Conc. [pg/μl]	Molarity [pmol/l]	Observations	Aligned Migration Time [s]
1	35	125.00	5,411.3	Lower Marker	43.00
2	42	8,443.16	305,702.0		44.14
3	52	3,499.88	102,350.4		45.72
4	60	2,329.02	58,840.6		46.70
5	79	17,351.90	332,724.3		48.99
6	90	12,684.02	213,775.7		50.29
7	121	2,030.62	25,487.6		53.61
8	143	8,854.12	94,047.3		55.85
9	151	2,802.66	28,183.2		56.66
10	165	9,012.13	82,911.5		58.08
11	185	17,329.88	142,210.2		60.09
12	210	1,952.82	14,056.7		62.11
13	239	1,880.03	11,925.2		63.36
14	291	21,733.26	113,283.1		65.64
15	375	1,027.60	4,154.4		70.22
16	388	2,284.78	8,911.4		70.98
17	415	4,589.58	16,769.9		72.45
18	439	3,301.50	11,400.6		73.81
19	459	8,911.40	29,414.7		74.95
20	494	2,461.17	7,552.6		76.91
21	533	3,720.50	10,574.3		78.44
22	582	867.50	2,257.1		80.18
23	600	1,129.71	2,850.8		80.83
24	627	482.73	1,167.1		82.57
25	639	1,225.58	2,906.2		83.39

Assay Class: High Sensitivity DNA Assay
 Data Path: C:\...ents and Settings\Bioanalyzer\2015-02-06\2015-02-06_001.xad


Created: 2/6/2015 9:16:12 AM
 Modified: 2/6/2015 10:18:44 AM

Electropherogram Summary Continued ...

... Peak table for sample 4 : sample 7

Peak	Size [bp]	Conc. [pg/μl]	Molarity [pmol/l]	Observations	Aligned Migration Time [s]
26	673	1,030.22	2,318.0		85.67
27	711	328.29	700.0		87.63
28	767	209.71	414.2		88.67
29	797	198.49	377.4		89.21
30	913	422.03	700.3		91.34
31	1,262	856.06	1,027.4		93.95
32	1,654	497.81	456.1		95.47
33	8,638	173.74	30.5		111.09
34	10,380	75.00	10.9	Upper Marker	113.00
35	35,563	0.00	0.0		140.54

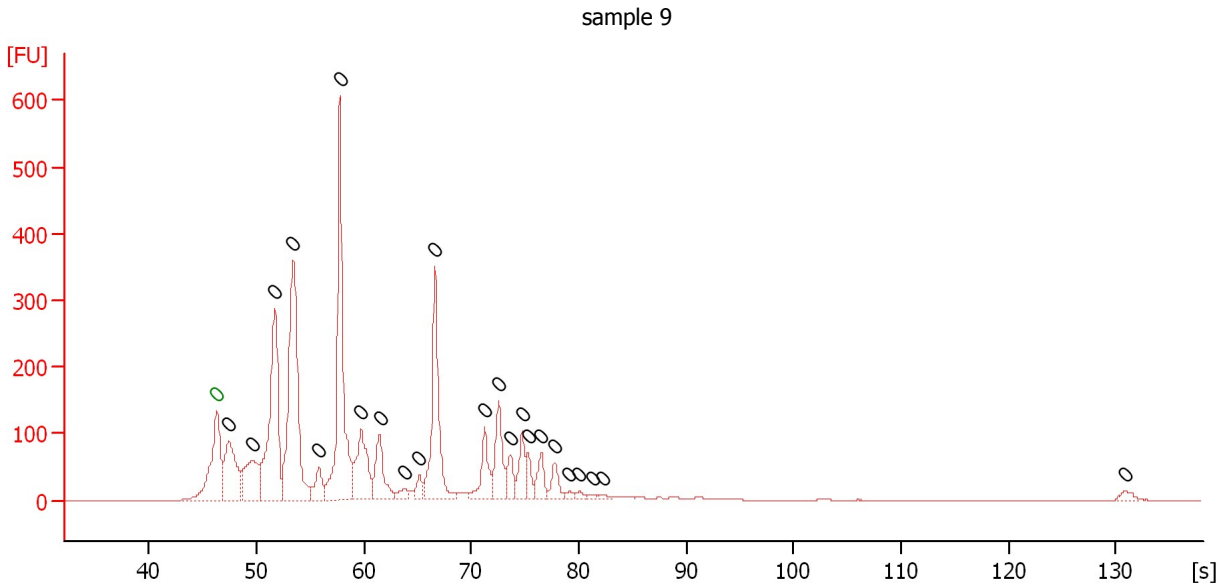
Region table for sample 4 : sample 7

From [bp]	Average Size [bp]	To [bp]	Corr. Area	% of Total	Size distribution in CV [%]	Conc. [pg/μl]	Molarity [pmol/l]	Color
200	416	1,000	2,612.4	48	32.9	57,659.93	240,072.0	

Assay Class: High Sensitivity DNA Assay
 Data Path: C:\...ents and Settings\Bioanalyzer\2015-02-06\2015-02-06_001.xad

Created: 2/6/2015 9:16:12 AM
 Modified: 2/6/2015 10:18:44 AM

Electropherogram Summary Continued ...



Overall Results for sample 5 : sample 9

Number of peaks found: 23 Noise: 0.2

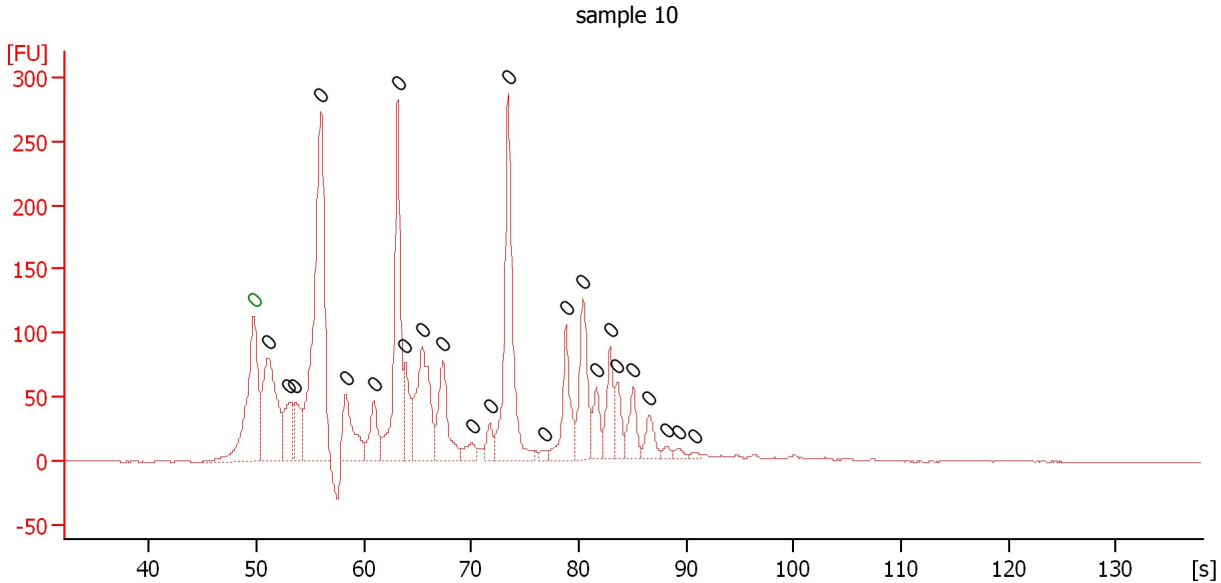
Peak table for sample 5 : sample 9

Peak	Size [bp]	Conc. [pg/μl]	Molarity [pmol/l]	Observations	Aligned Migration Time [s]
1	0	0.00	0.0	Lower Marker	46.30
2	0	0.00	0.0		47.40
3	0	0.00	0.0		49.65
4	0	0.00	0.0		51.70
5	0	0.00	0.0		53.40
6	0	0.00	0.0		55.80
7	0	0.00	0.0		57.75
8	0	0.00	0.0		59.75
9	0	0.00	0.0		61.45
10	0	0.00	0.0		63.75
11	0	0.00	0.0		65.15
12	0	0.00	0.0		66.60
13	0	0.00	0.0		71.25
14	0	0.00	0.0		72.55
15	0	0.00	0.0		73.65
16	0	0.00	0.0		74.70
17	0	0.00	0.0		75.25
18	0	0.00	0.0		76.50
19	0	0.00	0.0		77.75
20	0	0.00	0.0		79.10
21	0	0.00	0.0		80.05
22	0	0.00	0.0		81.25
23	0	0.00	0.0		82.15
24	0	0.00	0.0		130.85

Assay Class: High Sensitivity DNA Assay
 Data Path: C:\...ents and Settings\Bioanalyzer\2015-02-06\2015-02-06_001.xad

Created: 2/6/2015 9:16:12 AM
 Modified: 2/6/2015 10:18:44 AM

Electropherogram Summary Continued ...



Overall Results for sample 6 : sample 10

Number of peaks found: 24 Noise: 0.2

Peak table for sample 6 : sample 10

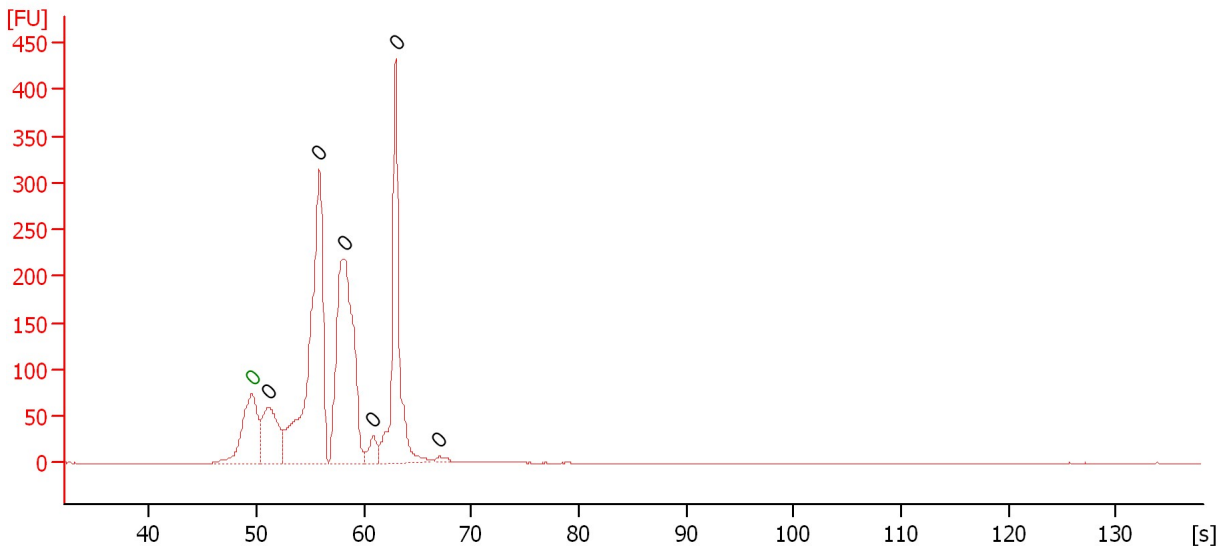
Peak	Size [bp]	Conc. [pg/μl]	Molarity [pmol/l]	Observations	Aligned Migration Time [s]
1	0	0.00	0.0	Lower Marker	49.75
2	0	0.00	0.0		51.05
3	0	0.00	0.0		53.05
4	0	0.00	0.0		53.60
5	0	0.00	0.0		56.00
6	0	0.00	0.0		58.30
7	0	0.00	0.0		60.95
8	0	0.00	0.0		63.15
9	0	0.00	0.0		63.85
10	0	0.00	0.0		65.45
11	0	0.00	0.0		67.40
12	0	0.00	0.0		70.05
13	0	0.00	0.0		71.70
14	0	0.00	0.0		73.40
15	0	0.00	0.0		76.85
16	0	0.00	0.0		78.80
17	0	0.00	0.0		80.40
18	0	0.00	0.0		81.65
19	0	0.00	0.0		82.95
20	0	0.00	0.0		83.60
21	0	0.00	0.0		85.05
22	0	0.00	0.0		86.55
23	0	0.00	0.0		88.15
24	0	0.00	0.0		89.30
25	0	0.00	0.0		90.85

Assay Class: High Sensitivity DNA Assay
 Data Path: C:\...ents and Settings\Bioanalyzer\2015-02-06\2015-02-06_001.xad

Created: 2/6/2015 9:16:12 AM
 Modified: 2/6/2015 10:18:44 AM

Electropherogram Summary Continued ...

sample 11



Overall Results for sample 7 : sample 11

Number of peaks found: 6 Noise: 0.2

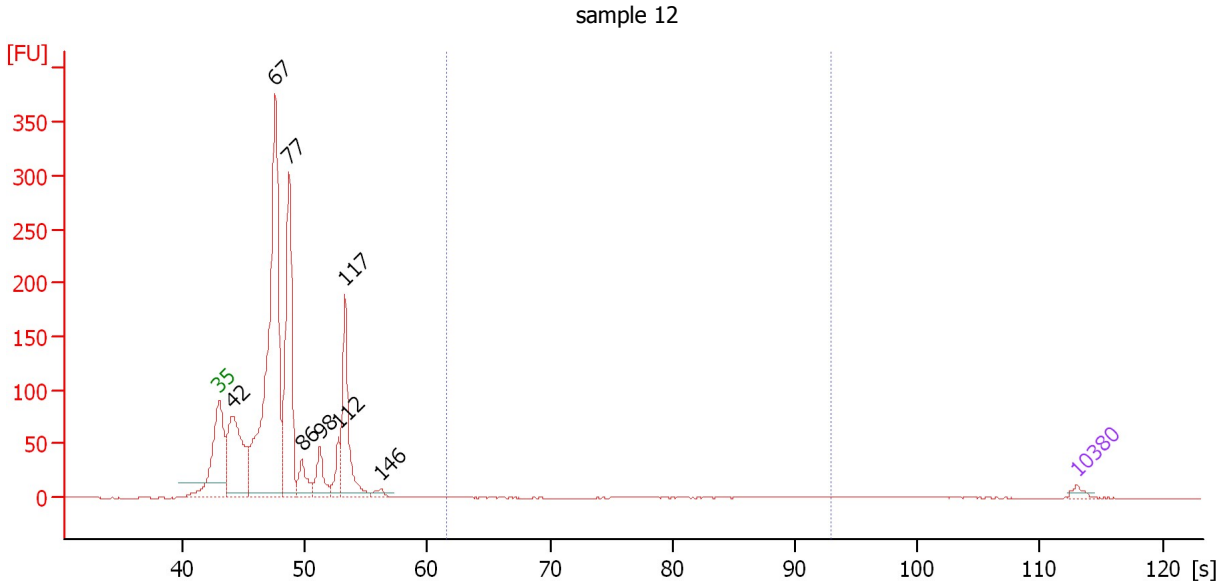
Peak table for sample 7 : sample 11

Peak	Size [bp]	Conc. [pg/μl]	Molarity [pmol/l]	Observations	Aligned Migration Time [s]
1	0	0.00	0.0	Lower Marker	49.55
2	0	0.00	0.0		51.05
3	0	0.00	0.0		55.85
4	0	0.00	0.0		58.10
5	0	0.00	0.0		60.85
6	0	0.00	0.0		62.95
7	0	0.00	0.0		67.00

Assay Class: High Sensitivity DNA Assay
 Data Path: C:\...ents and Settings\Bioanalyzer\2015-02-06\2015-02-06_001.xad

Created: 2/6/2015 9:16:12 AM
 Modified: 2/6/2015 10:18:44 AM

Electropherogram Summary Continued ...



Overall Results for sample 8 : sample 12

Number of peaks found: 8 Corr. Area 1: 23.0
 Noise: 0.2

Peak table for sample 8 : sample 12

Peak	Size [bp]	Conc. [pg/μl]	Molarity [pmol/l]	Observations	Aligned Migration Time [s]
1	35	125.00	5,411.3	Lower Marker	43.00
2	42	3,309.88	120,657.3		44.10
3	67	9,913.57	222,600.1		47.60
4	77	4,608.60	91,151.0		48.70
5	86	665.18	11,755.4		49.79
6	98	783.12	12,134.4		51.24
7	112	578.32	7,821.5		52.73
8	117	2,511.41	32,467.4		53.26
9	146	150.53	1,561.5		56.19
10	10,380	75.00	10.9	Upper Marker	113.00

Region table for sample 8 : sample 12

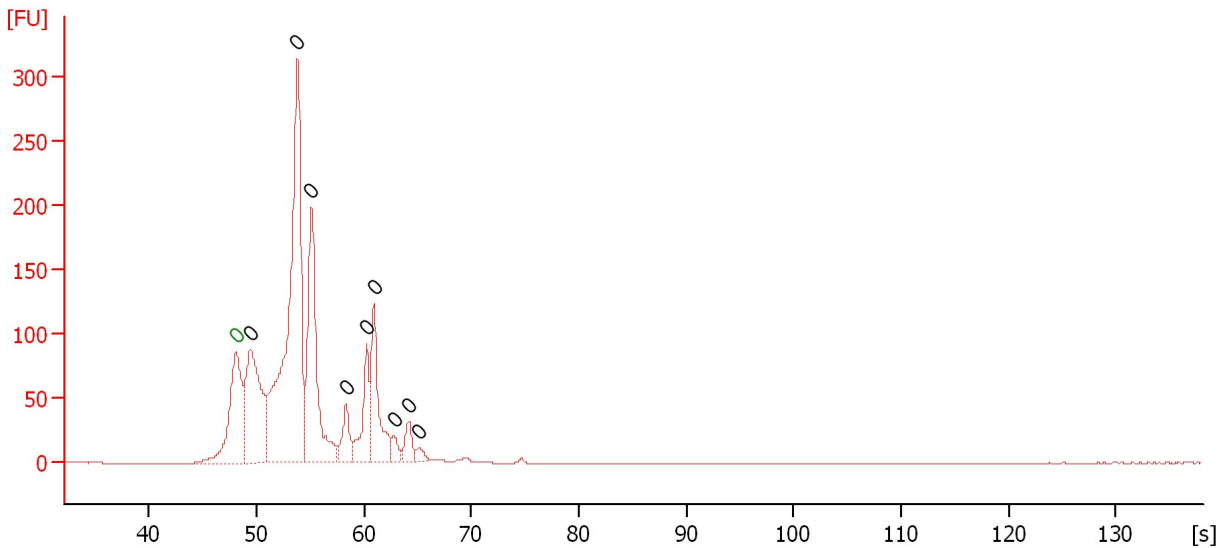
From [bp]	Average Size [bp]	To [bp]	Corr. Area	% of Total	Size distribution in CV [%]	Conc. [pg/μl]	Molarity [pmol/l]	Color
200	623	1,000	23.0	1	32.4	181.81	560.4	Blue

Assay Class: High Sensitivity DNA Assay
 Data Path: C:\...ents and Settings\Bioanalyzer\2015-02-06\2015-02-06_001.xad

Created: 2/6/2015 9:16:12 AM
 Modified: 2/6/2015 10:18:44 AM

Electropherogram Summary Continued ...

sample 13



Overall Results for sample 9 : sample 13

Number of peaks found: 9 Noise: 0.1

Peak table for sample 9 : sample 13

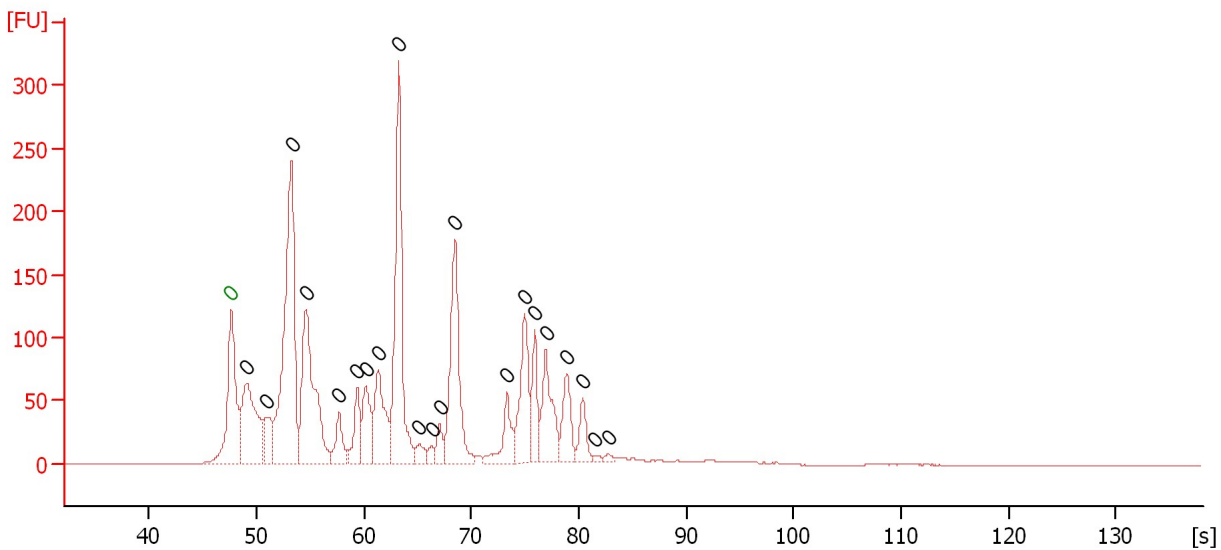
Peak	Size [bp]	Conc. [pg/μl]	Molarity [pmol/l]	Observations	Aligned Migration Time [s]
1	0	0.00	0.0	Lower Marker	48.10
2	0	0.00	0.0		49.40
3	0	0.00	0.0		53.80
4	0	0.00	0.0		55.10
5	0	0.00	0.0		58.35
6	0	0.00	0.0		60.25
7	0	0.00	0.0		60.90
8	0	0.00	0.0		62.80
9	0	0.00	0.0		64.20
10	0	0.00	0.0		65.15

Assay Class: High Sensitivity DNA Assay
 Data Path: C:\...ents and Settings\Bioanalyzer\2015-02-06\2015-02-06_001.xad

Created: 2/6/2015 9:16:12 AM
 Modified: 2/6/2015 10:18:44 AM

Electropherogram Summary Continued ...

sample 14



Overall Results for sample 10 : sample 14

Number of peaks found: 21 Noise: 0.2

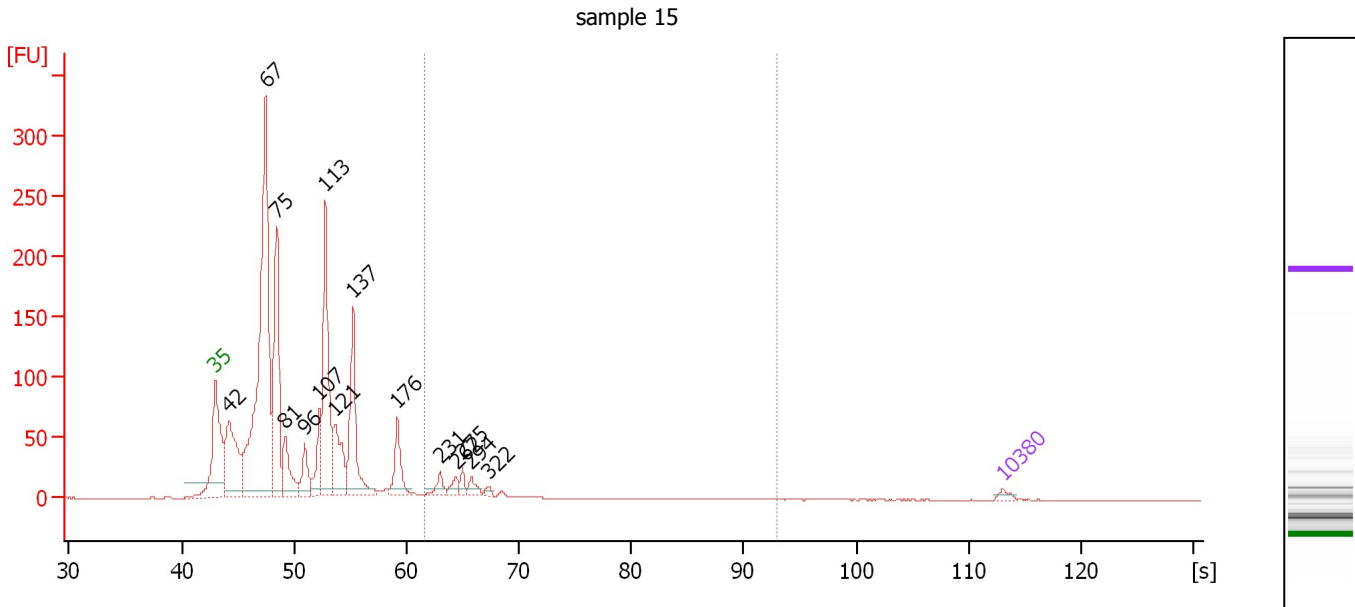
Peak table for sample 10 : sample 14

Peak	Size [bp]	Conc. [pg/μl]	Molarity [pmol/l]	Observations	Aligned Migration Time [s]
1	0	0.00	0.0	Lower Marker	47.65
2	0	0.00	0.0		49.05
3	0	0.00	0.0		50.95
4	0	0.00	0.0		53.25
5	0	0.00	0.0		54.60
6	0	0.00	0.0		57.70
7	0	0.00	0.0		59.35
8	0	0.00	0.0		60.15
9	0	0.00	0.0		61.35
10	0	0.00	0.0		63.25
11	0	0.00	0.0		65.15
12	0	0.00	0.0		66.35
13	0	0.00	0.0		67.05
14	0	0.00	0.0		68.45
15	0	0.00	0.0		73.30
16	0	0.00	0.0		74.95
17	0	0.00	0.0		75.90
18	0	0.00	0.0		76.95
19	0	0.00	0.0		78.90
20	0	0.00	0.0		80.35
21	0	0.00	0.0		81.55
22	0	0.00	0.0		82.70

Assay Class: High Sensitivity DNA Assay
 Data Path: C:\...ents and Settings\Bioanalyzer\2015-02-06\2015-02-06_001.xad

Created: 2/6/2015 9:16:12 AM
 Modified: 2/6/2015 10:18:44 AM

Electropherogram Summary Continued ...



Overall Results for sample 11 : sample 15

Number of peaks found: 15 Corr. Area 1: 130.3
 Noise: 0.1

Peak table for sample 11 : sample 15

Peak	Size [bp]	Conc. [pg/μl]	Molarity [pmol/l]	Observations	Aligned Migration Time [s]
1	35	125.00	5,411.3	Lower Marker	43.00
2	42	2,823.31	101,487.9		44.19
3	67	10,495.97	239,040.8		47.49
4	75	3,946.74	79,858.6		48.49
5	81	1,145.87	21,474.5		49.21
6	96	770.86	12,221.8		50.97
7	107	967.18	13,639.8		52.26
8	113	3,963.61	53,335.3		52.79
9	121	1,496.85	18,736.6		53.65
10	137	2,599.72	28,752.0		55.27
11	176	919.54	7,930.7		59.19
12	231	234.56	1,539.1		63.01
13	262	204.15	1,179.3		64.39
14	275	185.66	1,021.9		64.96
15	294	216.33	1,116.1		65.78
16	322	85.09	399.8		67.30
17	10,380	75.00	10.9	Upper Marker	113.00

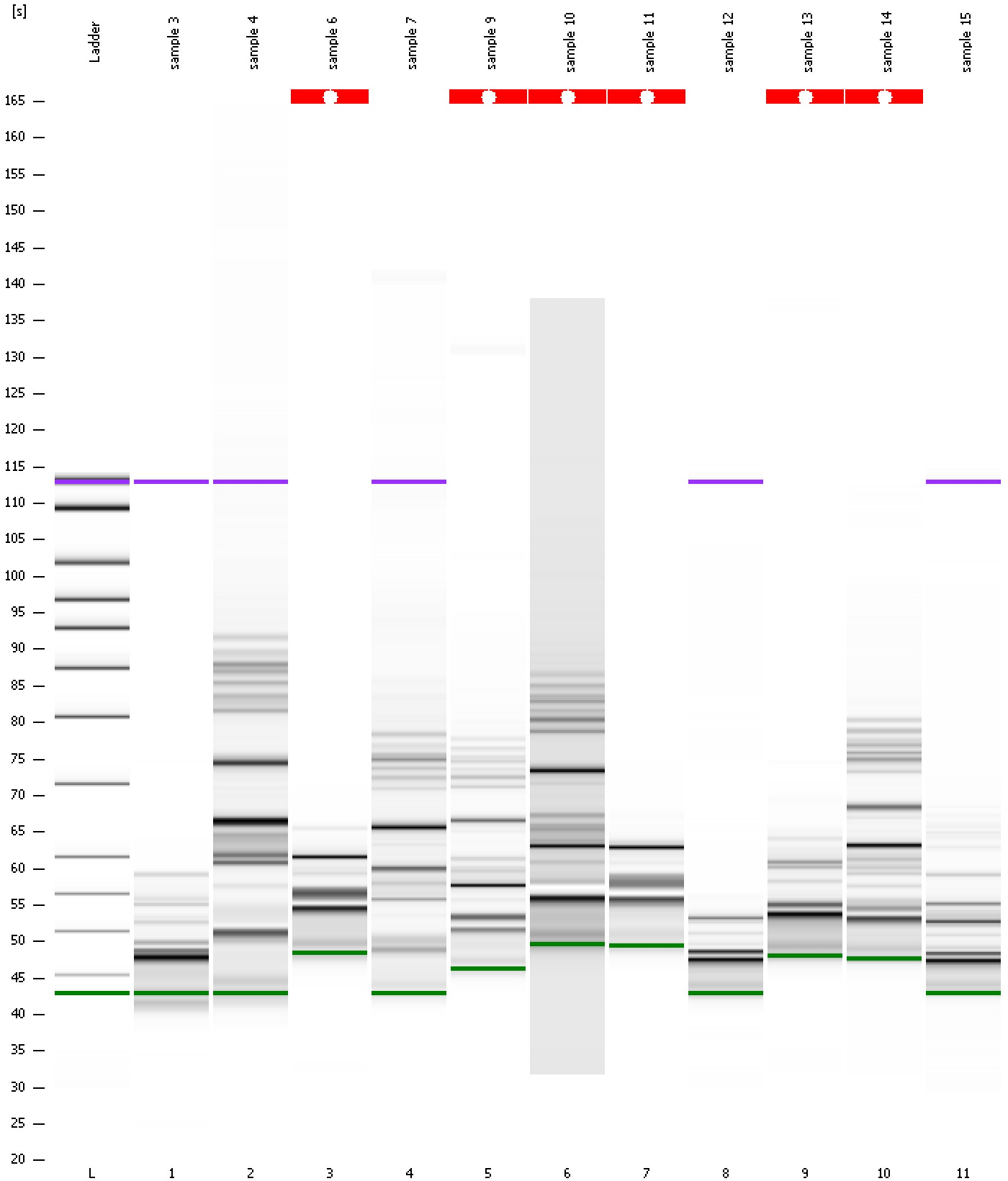
Region table for sample 11 : sample 15

From [bp]	Average Size [bp]	To [bp]	Corr. Area	% of Total	Size distribution in CV [%]	Conc. [pg/μl]	Molarity [pmol/l]	Color
200	308	1,000	130.3	6	33.0	1,619.64	8,630.7	Blue

Assay Class: High Sensitivity DNA Assay
Data Path: C:\...ents and Settings\Bioanalyzer\2015-02-06\2015-02-06_001.xad

Created: 2/6/2015 9:16:12 AM
Modified: 2/6/2015 10:18:44 AM

Gel Image



Assay Class: High Sensitivity DNA Assay
 Data Path: C:\...ents and Settings\Bioanalyzer\2015-02-06\2015-02-06_001.xad

Created: 2/6/2015 9:16:12 AM
 Modified: 2/6/2015 10:18:44 AM

Run Logbook

Description	Number	Source	Category	Sub Category	Time	Time Zone	User	Host
Run ended on port 1 (Number of wells acquired: 12)		Instrument	Run		2/6/2015 9:57:30 AM	(GMT --08:00) Pacific Standard Time	UC Davis	D8XSMGH1
Run started on port 1 (File: C:\Documents and Settings\Bioanalyzer\2015-02-06\2015-02-06_001.xad)		Instrument	Run		2/6/2015 9:16:17 AM	(GMT --08:00) Pacific Standard Time	UC Davis	D8XSMGH1
Product Number : G2938B		Instrument	Run		2/6/2015 9:16:17 AM	(GMT --08:00) Pacific Standard Time	UC Davis	D8XSMGH1
Name :		Instrument	Run		2/6/2015 9:16:17 AM	(GMT --08:00) Pacific Standard Time	UC Davis	D8XSMGH1
Vendor : Agilent Technologies		Instrument	Run		2/6/2015 9:16:17 AM	(GMT --08:00) Pacific Standard Time	UC Davis	D8XSMGH1
Serial# : DE13701086		Instrument	Run		2/6/2015 9:16:17 AM	(GMT --08:00) Pacific Standard Time	UC Davis	D8XSMGH1
Firmware : C.01.069		Instrument	Run		2/6/2015 9:16:17 AM	(GMT --08:00) Pacific Standard Time	UC Davis	D8XSMGH1
Cartridge : Electrode		Instrument	Run		2/6/2015 9:16:17 AM	(GMT --08:00) Pacific Standard Time	UC Davis	D8XSMGH1