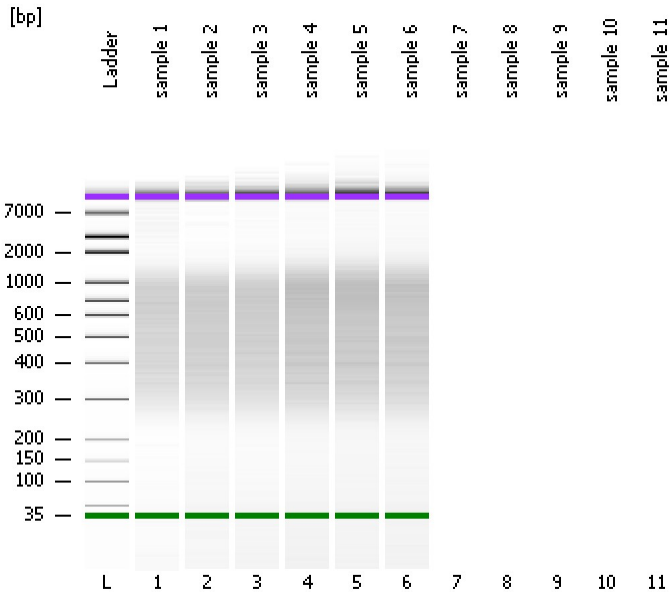


Assay Class: High Sensitivity DNA Assay
Data Path: C:\...ents and Settings\Bioanalyzer\2015-02-12\2015-02-12_001.xad

Created: 2/12/2015 10:31:57 AM
Modified: 2/12/2015 11:02:14 AM

Electrophoresis File Run Summary



Instrument Information:

Instrument Name: DE13701086 Firmware: C.01.069
Serial#: DE13701086 Type: G2938B

Assay Information:

Assay Origin Path: C:\Program Files\Agilent\2100 bioanalyzer\2100 expert\assays\dsDNA\High Sensitivity DNA.xsy
Assay Class: High Sensitivity DNA Assay
Version: 1.03
Assay Comments: Copyright © 2003-2010 Agilent Technologies

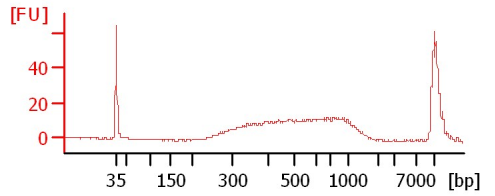
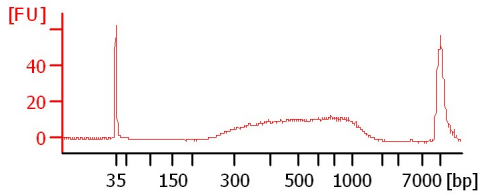
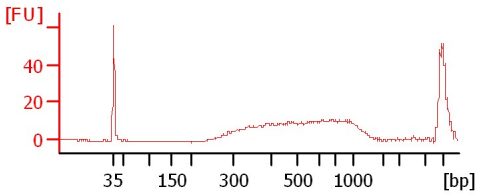
Chip Information:

Chip Lot #: Reagent Kit Lot #: Chip Comments:

sample 1

sample 2

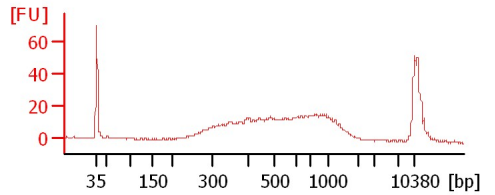
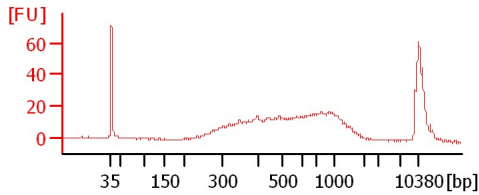
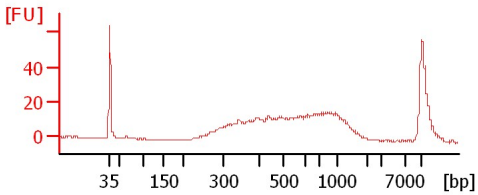
sample 3



sample 4

sample 5

sample 6



Assay Class: High Sensitivity DNA Assay
 Data Path: C:\...ents and Settings\Bioanalyzer\2015-02-12\2015-02-12_001.xad

Created: 2/12/2015 10:31:57 AM
 Modified: 2/12/2015 11:02:14 AM

Electrophoresis File Run Summary (Chip Summary)

Sample Name	Sample Comment	Rest. Digest	Status	Observation	Result Label	Result Color
sample 1		<input type="checkbox"/>	✓			
sample 2		<input type="checkbox"/>	✓			
sample 3		<input type="checkbox"/>	✓			
sample 4		<input type="checkbox"/>	✓			
sample 5		<input type="checkbox"/>	✓			
sample 6		<input type="checkbox"/>	✓			
sample 7		<input type="checkbox"/>				
sample 8		<input type="checkbox"/>				
sample 9		<input type="checkbox"/>				
sample 10		<input type="checkbox"/>				
sample 11		<input type="checkbox"/>				
Ladder		<input type="checkbox"/>	✓			

Chip Lot #

Reagent Kit Lot #

Chip Comments :

Assay Class: High Sensitivity DNA Assay
Data Path: C:\...ents and Settings\Bioanalyzer\2015-02-12\2015-02-12_001.xad

Created: 2/12/2015 10:31:57 AM
Modified: 2/12/2015 11:02:14 AM

Electrophoresis Assay Details

General Analysis Settings

Number of Available Sample and Ladder Wells (Max.) : 12
Minimum Visible Range [s] : 32
Maximum Visible Range [s] : 138
Start Analysis Time Range [s] : 33
End Analysis Time Range [s] : 137.5
Ladder Concentration [pg/μl] : 1950
Uses Standard Area for Ladder Fragments
Lower Marker Concentration [pg/μl] : 125
Upper Marker Concentration [pg/μl] : 75
Used Upper Marker for Quantitation
Standard Curve Fit is Point to Point
Show Data Aligned to Lower and Upper Marker

Integrator Settings

Integration Start Time [s] : 33.05
Integration End Time [s] : 137
Slope Threshold : 0.8
Height Threshold [FU] : 5
Area Threshold : 0.1
Width Threshold [s] : 0.6
Baseline Plateau [s] : 0.5

Filter Settings

Filter Width [s] : 0.5
Polynomial Order : 4

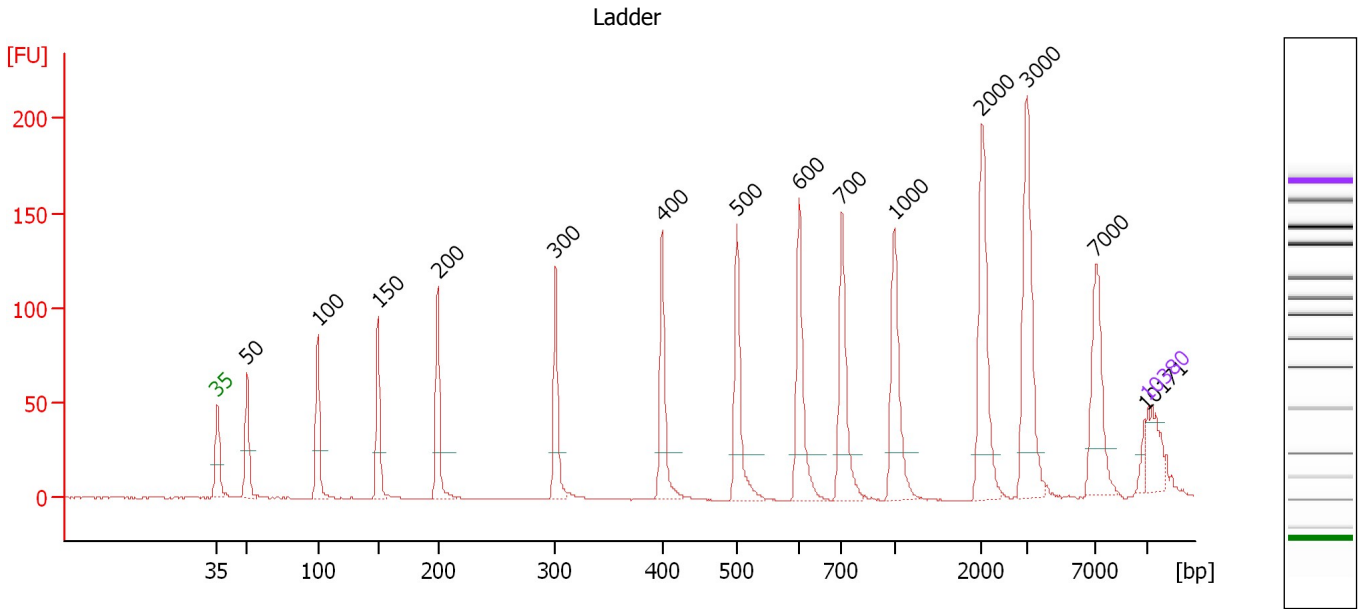
Ladder

Ladder Peak	Size	Area
1	35	160
2	50	210
3	100	208
4	150	221
5	200	242
6	300	270
7	400	305
8	500	306
9	600	336
10	700	321
11	1000	366
12	2000	413
13	3000	411
14	7000	400
15	10380	214

Assay Class: High Sensitivity DNA Assay
 Data Path: C:\...ents and Settings\Bioanalyzer\2015-02-12\2015-02-12_001.xad

Created: 2/12/2015 10:31:57 AM
 Modified: 2/12/2015 11:02:14 AM

Electropherogram Summary



Overall Results for Ladder

Noise: 0.2

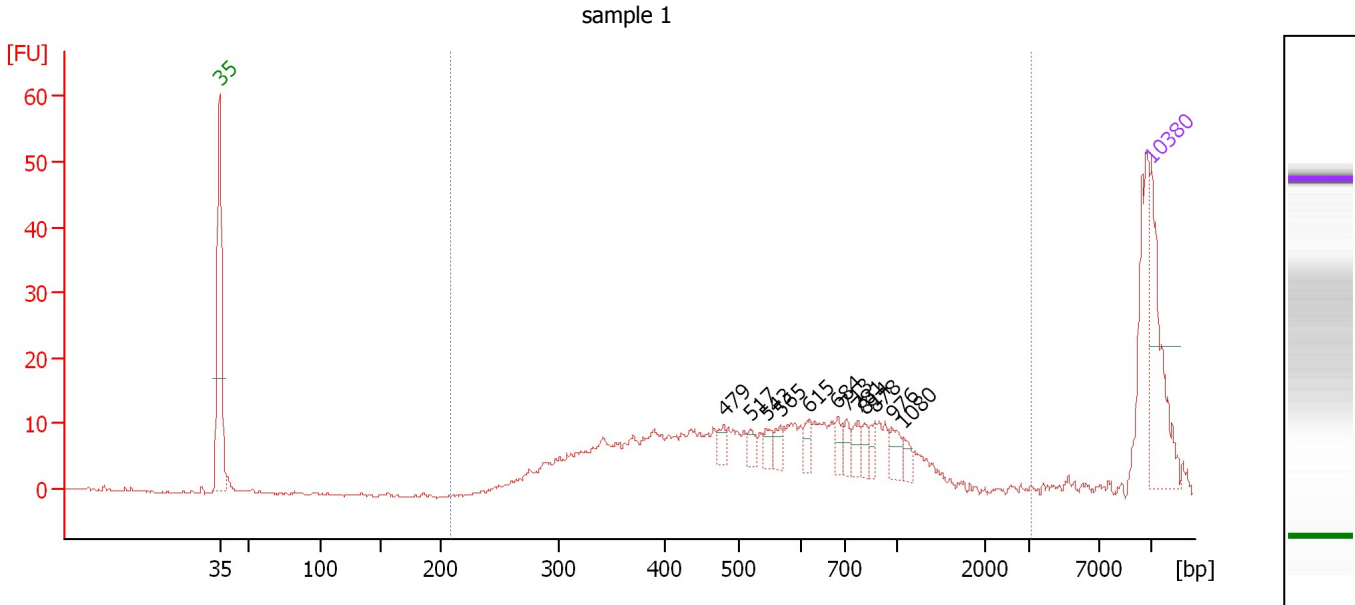
Peak table for Ladder

Peak	Size [bp]	Conc. [pg/μl]	Molarity [pmol/l]	Observations	Aligned Migration Time [s]
1	35	125.00	5,411.3	Lower Marker	43.00
2	50	150.00	4,545.5	Ladder Peak	45.25
3	100	150.00	2,272.7	Ladder Peak	50.54
4	150	150.00	1,515.2	Ladder Peak	55.07
5	200	150.00	1,136.4	Ladder Peak	59.57
6	300	150.00	757.6	Ladder Peak	68.43
7	400	150.00	568.2	Ladder Peak	76.46
8	500	150.00	454.5	Ladder Peak	82.11
9	600	150.00	378.8	Ladder Peak	86.77
10	700	150.00	324.7	Ladder Peak	89.97
11	1,000	150.00	227.3	Ladder Peak	93.91
12	2,000	150.00	113.6	Ladder Peak	100.52
13	3,000	150.00	75.8	Ladder Peak	103.89
14	7,000	150.00	32.5	Ladder Peak	109.11
15	10,171	0.00	0.0		112.76
16	10,380	75.00	10.9	Upper Marker	113.00

Assay Class: High Sensitivity DNA Assay
 Data Path: C:\...ents and Settings\Bioanalyzer\2015-02-12\2015-02-12_001.xad

Created: 2/12/2015 10:31:57 AM
 Modified: 2/12/2015 11:02:14 AM

Electropherogram Summary Continued ...



Overall Results for sample 1 : sample 1

Number of peaks found: 12 Corr. Area 1: 244.8
 Noise: 0.2

Peak table for sample 1 : sample 1

Peak	Size [bp]	Conc. [pg/μl]	Molarity [pmol/l]	Observations	Aligned Migration Time [s]
1	35	125.00	5,411.3	Lower Marker	43.00
2	479	11.31	35.8		80.93
3	517	11.11	32.6		82.89
4	543	11.23	31.3		84.13
5	565	12.28	32.9		85.14
6	615	12.63	31.1		87.26
7	684	12.06	26.7		89.47
8	713	13.27	28.2		90.15
9	781	14.22	27.6		91.03
10	814	10.21	19.0		91.47
11	878	10.17	17.5		92.31
12	976	15.90	24.7		93.60
13	1,080	9.17	12.9		94.44
14	10,380	75.00	10.9	Upper Marker	113.00

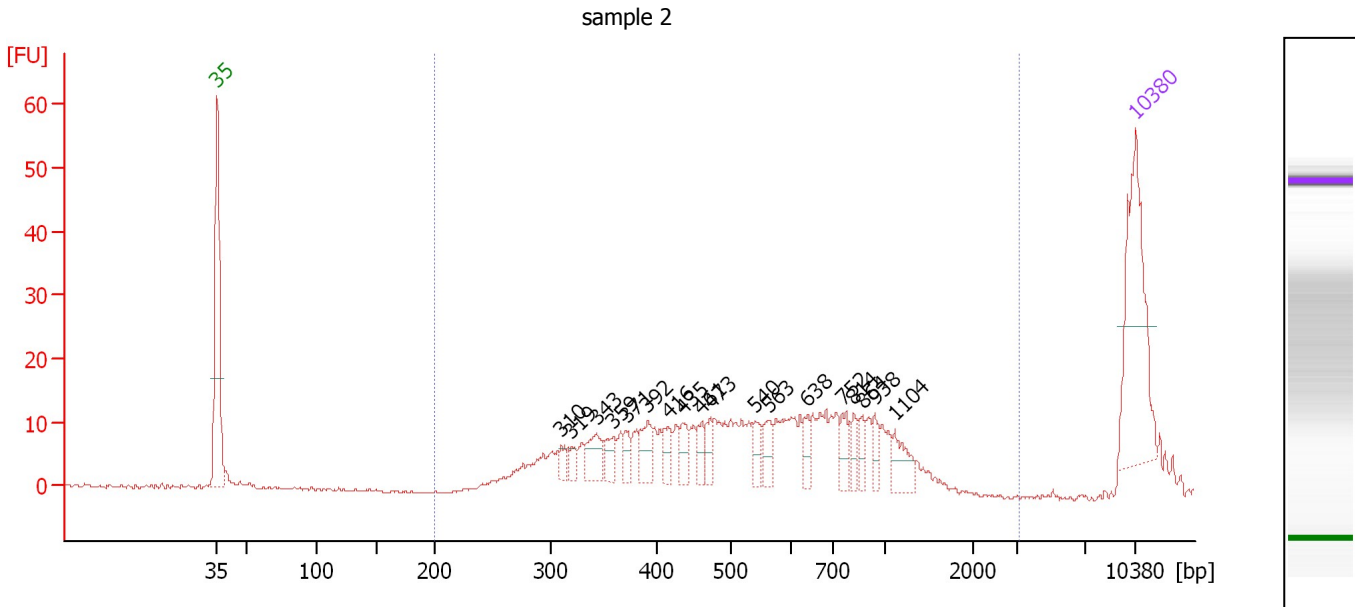
Region table for sample 1 : sample 1

From [bp]	Average Size [bp]	To [bp]	Corr. Area	% of Total	Size distribution in CV [%]	Conc. [pg/μl]	Molarity [pmol/l]	Color
210	575	3,133	244.8	87	39.6	556.65	1,765.5	Blue

Assay Class: High Sensitivity DNA Assay
 Data Path: C:\...ents and Settings\Bioanalyzer\2015-02-12\2015-02-12_001.xad

Created: 2/12/2015 10:31:57 AM
 Modified: 2/12/2015 11:02:14 AM

Electropherogram Summary Continued ...



Overall Results for sample 2 : sample 2

Number of peaks found: 18 Corr. Area 1: 363.2
 Noise: 0.3

Peak table for sample 2 : sample 2

Peak	Size [bp]	Conc. [pg/μl]	Molarity [pmol/l]	Observations	Aligned Migration Time [s]
1	35	125.00	5,411.3	Lower Marker	43.00
2	310	8.66	42.4		69.20
3	319	8.34	39.6		69.98
4	343	20.25	89.5		71.89
5	359	13.02	55.0		73.15
6	371	8.61	35.2		74.12
7	392	17.42	67.4		75.79
8	416	11.75	42.8		77.37
9	435	13.83	48.2		78.43
10	461	11.47	37.7		79.89
11	473	9.90	31.7		80.58
12	540	12.58	35.3		83.99
13	563	12.42	33.4		85.05
14	638	9.31	22.1		87.97
15	752	13.43	27.1		90.66
16	814	9.43	17.6		91.47
17	864	8.60	15.1		92.12
18	938	8.17	13.2		93.09
19	1,104	16.19	22.2		94.60
20	10,380	75.00	10.9	Upper Marker	113.00

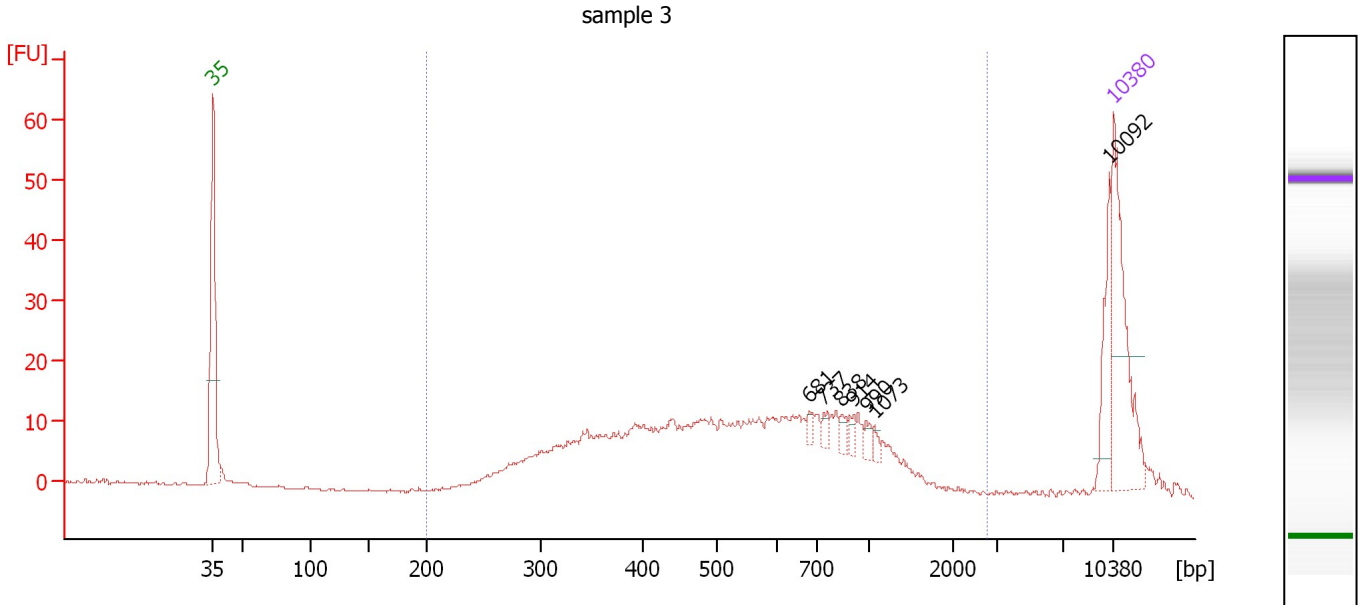
Region table for sample 2 : sample 2

From [bp]	Average Size [bp]	To [bp]	Corr. Area	% of Total	Size distribution in CV [%]	Conc. [pg/μl]	Molarity [pmol/l]	Color
200	584	3,091	363.2	97	44.3	501.41	1,622.0	Blue

Assay Class: High Sensitivity DNA Assay
 Data Path: C:\...ents and Settings\Bioanalyzer\2015-02-12\2015-02-12_001.xad

Created: 2/12/2015 10:31:57 AM
 Modified: 2/12/2015 11:02:14 AM

Electropherogram Summary Continued ...



Overall Results for sample 3 : sample 3

Number of peaks found: 7 Corr. Area 1: 375.3
 Noise: 0.2

Peak table for sample 3 : sample 3

Peak	Size [bp]	Conc. [pg/μl]	Molarity [pmol/l]	Observations	Aligned Migration Time [s]
1	35	125.00	5,411.3	Lower Marker	43.00
2	681	4.57	10.2		89.38
3	737	6.05	12.4		90.45
4	838	6.20	11.2		91.78
5	914	5.04	8.4		92.78
6	990	5.24	8.0		93.77
7	1,073	3.83	5.4		94.39
8	10,092	30.14	4.5		112.67
9	10,380	75.00	10.9	Upper Marker	113.00

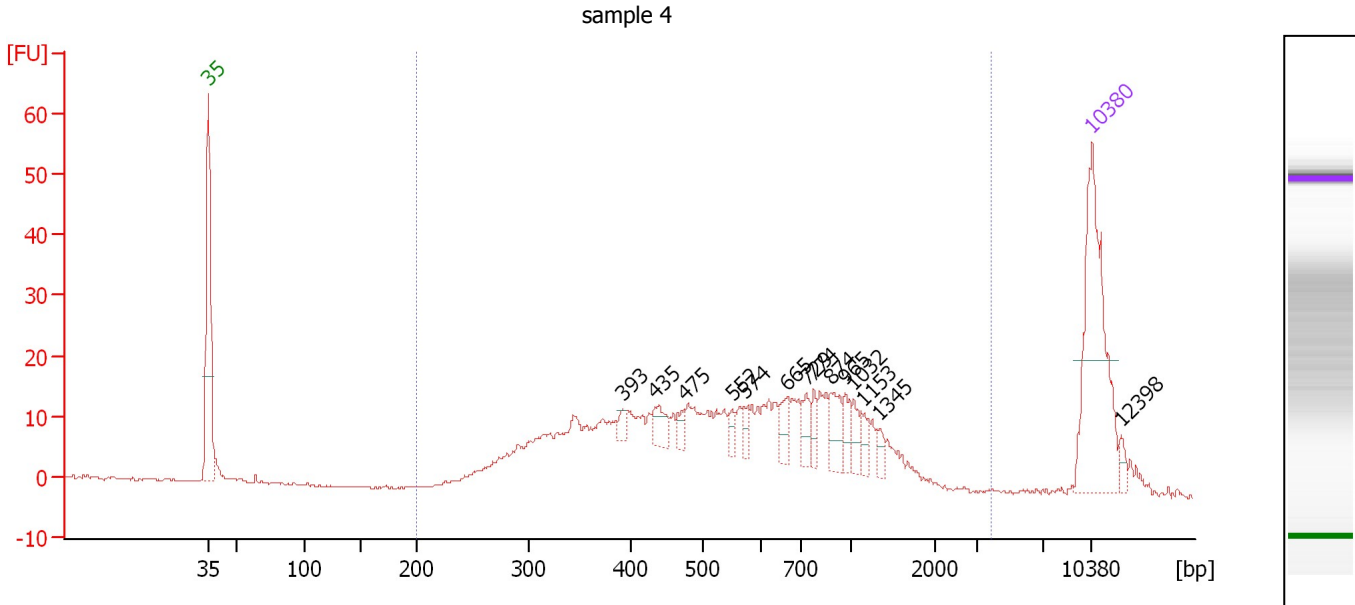
Region table for sample 3 : sample 3

From [bp]	Average Size [bp]	To [bp]	Corr. Area	% of Total	Size distribution in CV [%]	Conc. [pg/μl]	Molarity [pmol/l]	Color
200	592	2,769	375.3	91	45.5	554.05	1,787.0	Blue

Assay Class: High Sensitivity DNA Assay
 Data Path: C:\...ents and Settings\Bioanalyzer\2015-02-12\2015-02-12_001.xad

Created: 2/12/2015 10:31:57 AM
 Modified: 2/12/2015 11:02:14 AM

Electropherogram Summary Continued ...



Overall Results for sample 4 : sample 4

Number of peaks found: 14 Corr. Area 1: 499.1
 Noise: 0.2

Peak table for sample 4 : sample 4

Peak	Size [bp]	Conc. [pg/μl]	Molarity [pmol/l]	Observations	Aligned Migration Time [s]
1	35	125.00	5,411.3	Lower Marker	43.00
2	393	5.21	20.1		75.87
3	435	12.08	42.1		78.44
4	475	6.06	19.3		80.68
5	552	5.49	15.1		84.53
6	574	6.11	16.1		85.54
7	665	10.64	24.3		88.84
8	729	9.46	19.7		90.36
9	774	7.81	15.3		90.95
10	874	15.68	27.2		92.26
11	965	8.47	13.3		93.44
12	1,032	8.35	12.3		94.12
13	1,153	6.34	8.3		94.92
14	1,345	4.68	5.3		96.19
15	10,380	75.00	10.9	Upper Marker	113.00
16	12,398	0.00	0.0		115.32

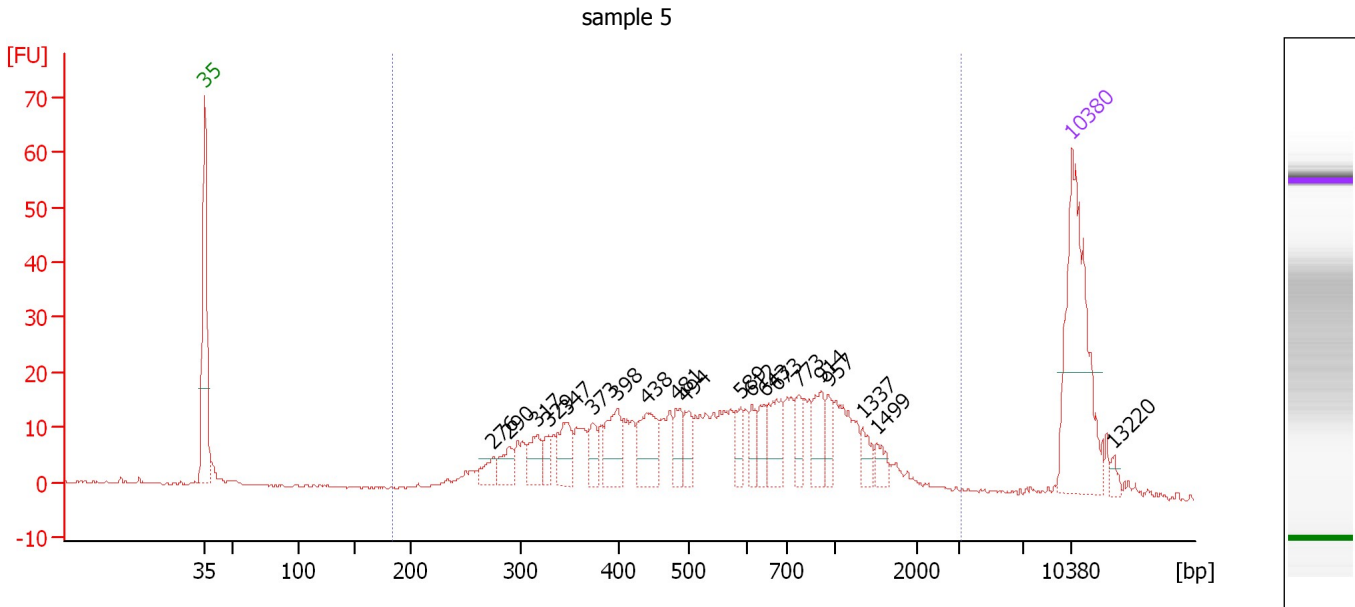
Region table for sample 4 : sample 4

From [bp]	Average Size [bp]	To [bp]	Corr. Area	% of Total	Size distribution in CV [%]	Conc. [pg/μl]	Molarity [pmol/l]	Color
200	657	3,860	499.1	96	58.0	551.78	1,734.4	Blue

Assay Class: High Sensitivity DNA Assay
 Data Path: C:\...ents and Settings\Bioanalyzer\2015-02-12\2015-02-12_001.xad

Created: 2/12/2015 10:31:57 AM
 Modified: 2/12/2015 11:02:14 AM

Electropherogram Summary Continued ...



Overall Results for sample 5 : sample 5

Number of peaks found: 20 Corr. Area 1: 573.1
 Noise: 0.2


Peak table for sample 5 : sample 5

Peak	Size [bp]	Conc. [pg/μl]	Molarity [pmol/l]	Observations	Aligned Migration Time [s]
1	35	125.00	5,411.3	Lower Marker	43.00
2	276	10.70	58.7		66.32
3	290	13.95	72.8		67.57
4	317	17.07	81.6		69.80
5	329	7.82	35.9		70.79
6	347	22.68	99.0		72.21
7	373	12.72	51.7		74.28
8	398	25.44	96.8		76.30
9	438	28.21	97.5		78.62
10	481	14.11	44.4		81.03
11	494	12.16	37.3		81.76
12	589	11.69	30.1		86.24
13	612	9.09	22.5		87.14
14	643	11.40	26.9		88.13
15	673	21.98	49.4		89.12
16	773	10.17	19.9		90.93
17	914	17.49	29.0		92.78
18	957	9.68	15.3		93.34
19	1,337	7.38	8.4		96.13
20	1,499	6.75	6.8		97.21
21	10,380	75.00	10.9	Upper Marker	113.00
22	13,220	0.00	0.0		116.27

Assay Class: High Sensitivity DNA Assay
Data Path: C:\...ents and Settings\Bioanalyzer\2015-02-12\2015-02-12_001.xad

Created: 2/12/2015 10:31:57 AM
Modified: 2/12/2015 11:02:14 AM

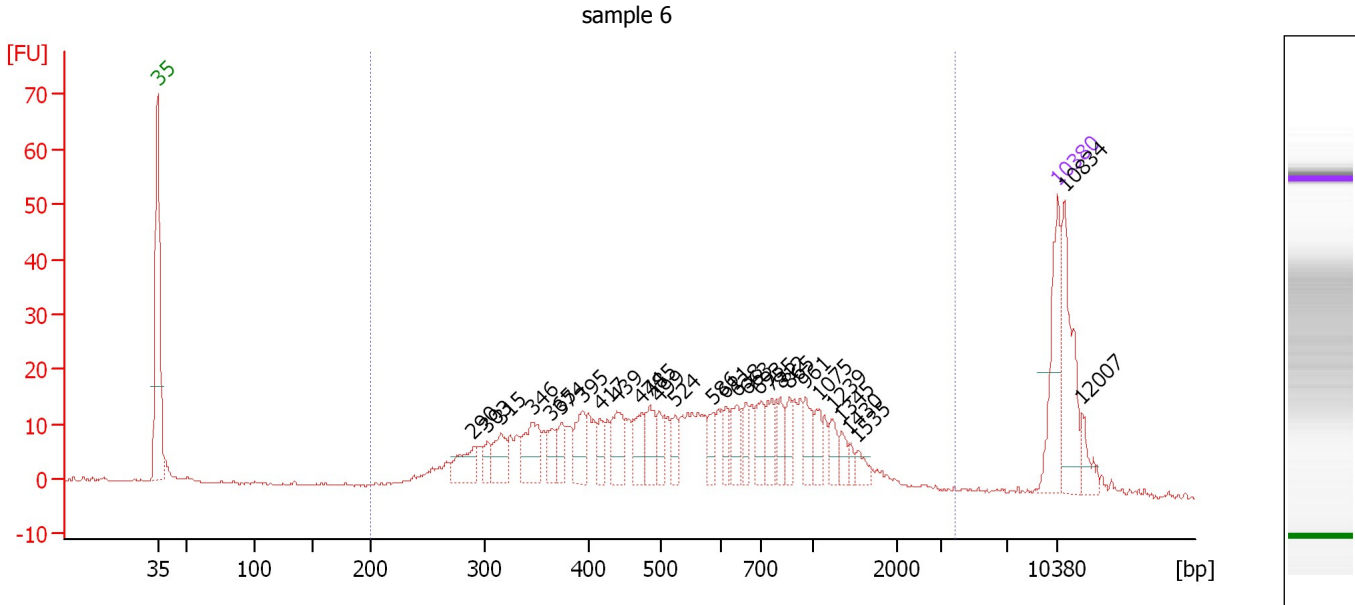
Electropherogram Summary Continued ...**... Region table for sample 5 : sample 5**

From [bp]	Average Size [bp]	To [bp]	Corr. Area	% of Total	Size distribution in CV [%]	Conc. [pg/μl]	Molarity [pmol/l]	Co lor
185	674	3,152	573.1	94	61.1	542.77	1,715.8	

Assay Class: High Sensitivity DNA Assay
 Data Path: C:\...ents and Settings\Bioanalyzer\2015-02-12\2015-02-12_001.xad

Created: 2/12/2015 10:31:57 AM
 Modified: 2/12/2015 11:02:14 AM

Electropherogram Summary Continued ...



Overall Results for sample 6 : sample 6

Number of peaks found: 29 Corr. Area 1: 506.9
 Noise: 0.2

Peak table for sample 6 : sample 6

Peak	Size [bp]	Conc. [pg/μl]	Molarity [pmol/l]	Observations	Aligned Migration Time [s]
1	35	125.00	5,411.3	Lower Marker	43.00
2	290	47.65	248.7		67.57
3	303	17.37	86.9		68.66
4	315	42.60	204.7		69.66
5	346	61.23	268.0		72.14
6	365	25.12	104.4		73.62
7	374	26.31	106.5		74.41
8	395	41.39	158.9		76.02
9	417	21.64	78.7		77.41
10	439	47.97	165.5		78.68
11	474	39.58	126.6		80.64
12	485	38.70	120.8		81.29
13	499	22.56	68.6		82.03
14	524	22.16	64.0		83.25
15	586	21.40	55.3		86.12
16	611	21.02	52.1		87.13
17	638	26.24	62.3		88.00
18	663	21.84	49.9		88.78
19	693	29.36	64.2		89.74
20	755	27.54	55.3		90.70
21	812	24.88	46.4		91.44
22	865	20.85	36.5		92.14
23	961	27.87	43.9		93.40
24	1,075	20.53	28.9		94.40
25	1,239	18.66	22.8		95.49

Assay Class: High Sensitivity DNA Assay
 Data Path: C:\...ents and Settings\Bioanalyzer\2015-02-12\2015-02-12_001.xad


Created: 2/12/2015 10:31:57 AM
 Modified: 2/12/2015 11:02:14 AM

Electropherogram Summary Continued ...

... Peak table for sample 6 : sample 6

Peak	Size [bp]	Conc. [pg/μl]	Molarity [pmol/l]	Observations	Aligned Migration Time [s]
26	1,345	13.03	14.7		96.19
27	1,430	7.96	8.4		96.75
28	1,535	11.26	11.1		97.45
29	10,380	75.00	10.9	Upper Marker	113.00
30	10,834	0.00	0.0		113.52
31	12,007	0.00	0.0		114.87

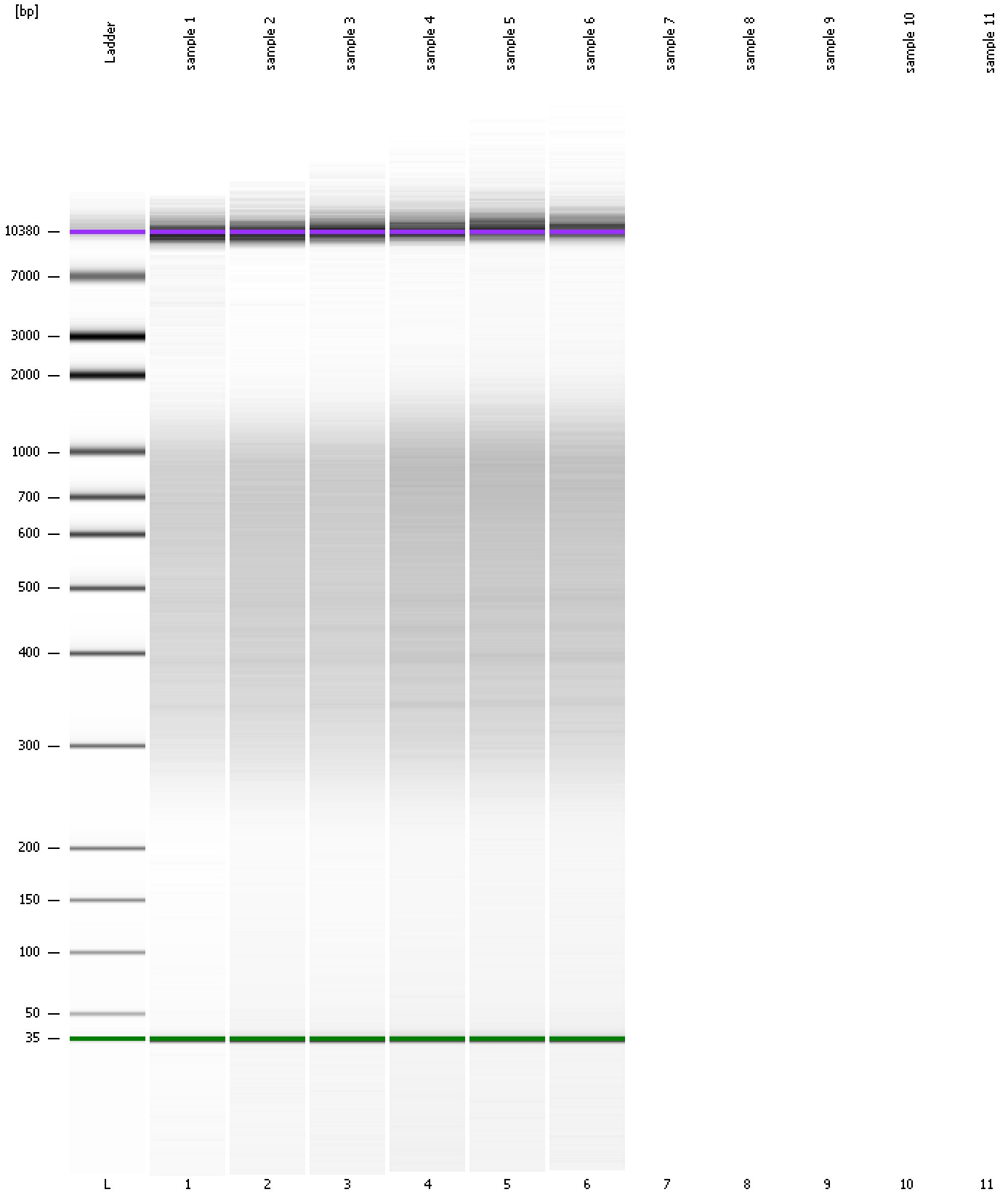
Region table for sample 6 : sample 6

From [bp]	Average Size [bp]	To [bp]	Corr. Area	% of Total	Size distribution in CV [%]	Conc. [pg/μl]	Molarity [pmol/l]	Color
200	662	3,902	506.9	88	59.6	1,206.91	3,786.5	

Assay Class: High Sensitivity DNA Assay
Data Path: C:\...ents and Settings\Bioanalyzer\2015-02-12\2015-02-12_001.xad

Created: 2/12/2015 10:31:57 AM
Modified: 2/12/2015 11:02:14 AM

Gel Image



Assay Class: High Sensitivity DNA Assay
Data Path: C:\...ents and Settings\Bioanalyzer\2015-02-12\2015-02-12_001.xad

Created: 2/12/2015 10:31:57 AM
Modified: 2/12/2015 11:02:14 AM

Invalid Samples

Sample 7 has not been run, no results available.

Sample 8 has not been run, no results available.

Sample 9 has not been run, no results available.

Sample 10 has not been run, no results available.

Sample 11 has not been run, no results available.

Assay Class: High Sensitivity DNA Assay
 Data Path: C:\...ents and Settings\Bioanalyzer\2015-02-12\2015-02-12_001.xad

Created: 2/12/2015 10:31:57 AM
 Modified: 2/12/2015 11:02:14 AM

Run Logbook

Description	Number	Source	Category	Sub Category	Time	Time Zone	User	Host
Run ended on port 1 (Number of wells acquired: 7)		Instrument	Run		2/12/2015 10:58:57 AM	(GMT --08:00) Pacific Standard Time	UC Davis	D8XSMGH1
Run started on port 1 (File: C:\Documents and Settings\Bioanalyzer\2015-02-12\2015-02-12_001.xad)		Instrument	Run		2/12/2015 10:32:02 AM	(GMT --08:00) Pacific Standard Time	UC Davis	D8XSMGH1
Product Number : G2938B		Instrument	Run		2/12/2015 10:32:02 AM	(GMT --08:00) Pacific Standard Time	UC Davis	D8XSMGH1
Name :		Instrument	Run		2/12/2015 10:32:02 AM	(GMT --08:00) Pacific Standard Time	UC Davis	D8XSMGH1
Vendor : Agilent Technologies		Instrument	Run		2/12/2015 10:32:02 AM	(GMT --08:00) Pacific Standard Time	UC Davis	D8XSMGH1
Serial# : DE13701086		Instrument	Run		2/12/2015 10:32:02 AM	(GMT --08:00) Pacific Standard Time	UC Davis	D8XSMGH1
Firmware : C.01.069		Instrument	Run		2/12/2015 10:32:02 AM	(GMT --08:00) Pacific Standard Time	UC Davis	D8XSMGH1
Cartridge : Electrode		Instrument	Run		2/12/2015 10:32:02 AM	(GMT --08:00) Pacific Standard Time	UC Davis	D8XSMGH1