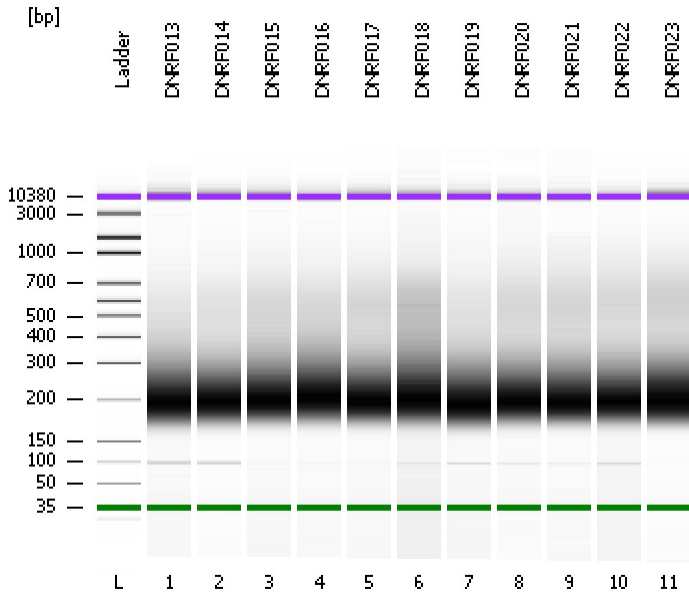


Assay Class: High Sensitivity DNA Assay
Data Path: C:\...ents and Settings\Bioanalyzer\2015-02-12\2015-02-12_002.xad

Created: 2/12/2015 2:36:41 PM
Modified: 2/12/2015 4:13:22 PM

Electrophoresis File Run Summary



Instrument Information:

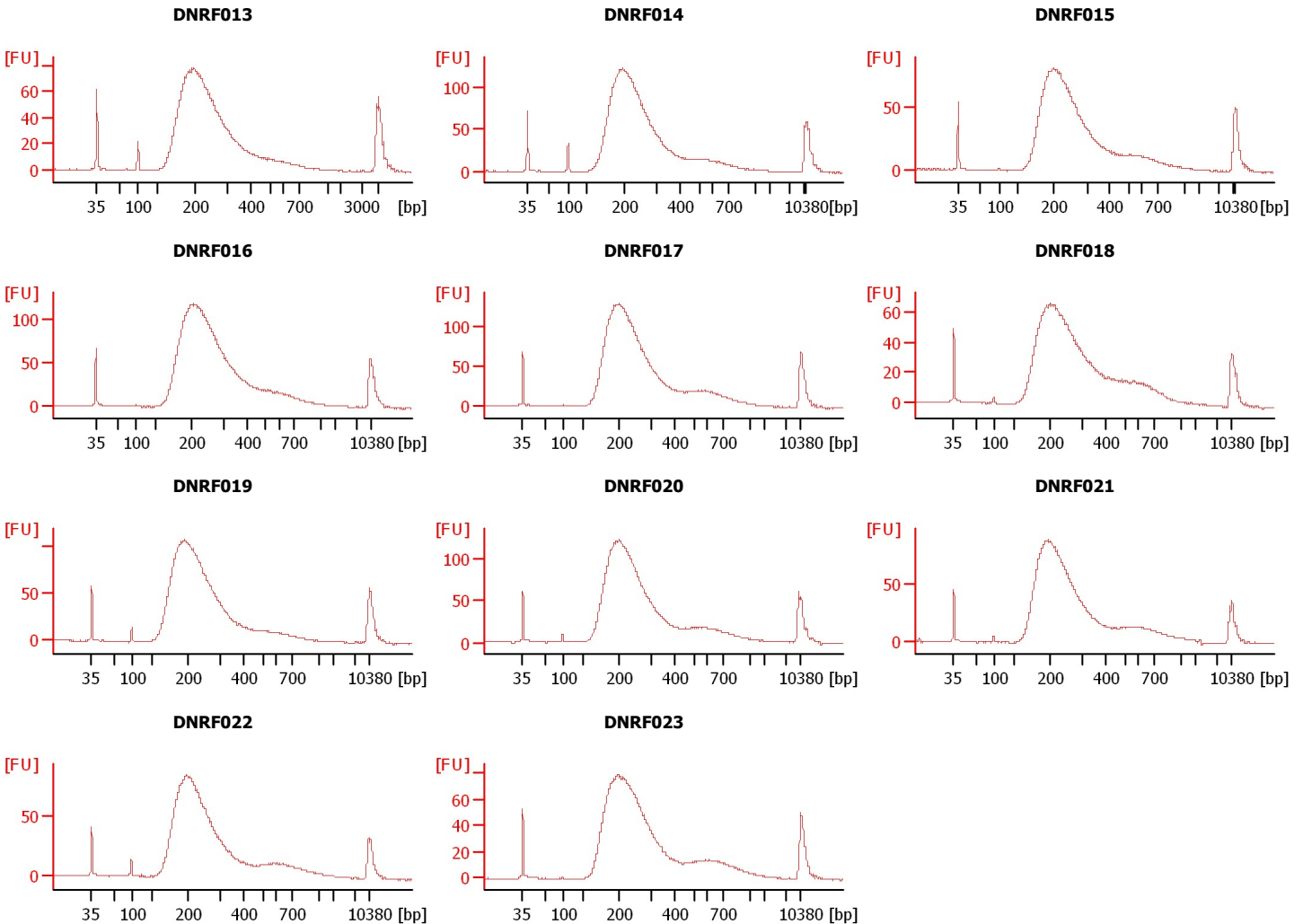
Instrument Name: DE13701086 Firmware: C.01.069
Serial#: DE13701086 Type: G2938B

Assay Information:

Assay Origin Path: C:\Program Files\Agilent\2100 bioanalyzer\2100 expert\assays\dsDNA\High Sensitivity DNA.xsy
Assay Class: High Sensitivity DNA Assay
Version: 1.03
Assay Comments: Copyright © 2003-2010 Agilent Technologies

Chip Information:

Chip Lot #: Reagent Kit Lot #: Chip Comments:



Assay Class: High Sensitivity DNA Assay
 Data Path: C:\...ents and Settings\Bioanalyzer\2015-02-12\2015-02-12_002.xad

Created: 2/12/2015 2:36:41 PM
 Modified: 2/12/2015 4:13:22 PM

Electrophoresis File Run Summary (Chip Summary)

Sample Name	Sample Comment	Rest. Digest	Status	Observation	Result Label	Result Color
DNRF013		<input type="checkbox"/>	✓			
DNRF014		<input type="checkbox"/>	✓			
DNRF015		<input type="checkbox"/>	✓			
DNRF016		<input type="checkbox"/>	✓			
DNRF017		<input type="checkbox"/>	✓			
DNRF018		<input type="checkbox"/>	✓			
DNRF019		<input type="checkbox"/>	✓			
DNRF020		<input type="checkbox"/>	✓			
DNRF021		<input type="checkbox"/>	✓			
DNRF022		<input type="checkbox"/>	✓			
DNRF023		<input type="checkbox"/>	✓			
Ladder		<input type="checkbox"/>	✓			

Chip Lot #

Reagent Kit Lot #

Chip Comments :

Assay Class: High Sensitivity DNA Assay
 Data Path: C:\...ents and Settings\Bioanalyzer\2015-02-12\2015-02-12_002.xad

Created: 2/12/2015 2:36:41 PM
 Modified: 2/12/2015 4:13:22 PM

Electrophoresis Assay Details

General Analysis Settings

Number of Available Sample and Ladder Wells (Max.) : 12
 Minimum Visible Range [s] : 32
 Maximum Visible Range [s] : 138
 Start Analysis Time Range [s] : 33
 End Analysis Time Range [s] : 137.5
 Ladder Concentration [pg/μl] : 1950
 Uses Standard Area for Ladder Fragments
 Lower Marker Concentration [pg/μl] : 125
 Upper Marker Concentration [pg/μl] : 75
 Used Upper Marker for Quantitation
 Standard Curve Fit is Point to Point
 Show Data Aligned to Lower and Upper Marker

Integrator Settings

Integration Start Time [s] : 33.05
 Integration End Time [s] : 137
 Slope Threshold : 0.8
 Height Threshold [FU] : 5
 Area Threshold : 0.1
 Width Threshold [s] : 0.6
 Baseline Plateau [s] : 0.5

Filter Settings

Filter Width [s] : 0.5
 Polynomial Order : 4

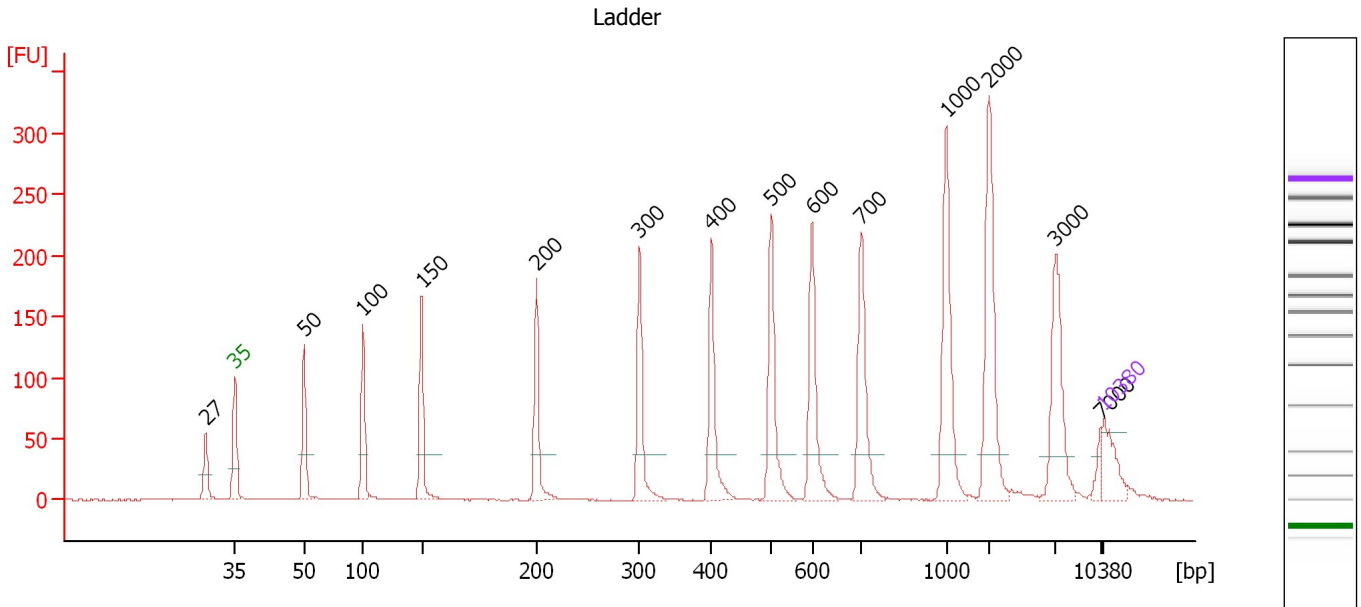
Ladder

Ladder Peak	Size	Area
1	35	160
2	50	210
3	100	208
4	150	221
5	200	242
6	300	270
7	400	305
8	500	306
9	600	336
10	700	321
11	1000	366
12	2000	413
13	3000	411
14	7000	400
15	10380	214

Assay Class: High Sensitivity DNA Assay
 Data Path: C:\...ents and Settings\Bioanalyzer\2015-02-12\2015-02-12_002.xad

Created: 2/12/2015 2:36:41 PM
 Modified: 2/12/2015 4:13:22 PM

Electropherogram Summary



Overall Results for Ladder

Noise: 0.1

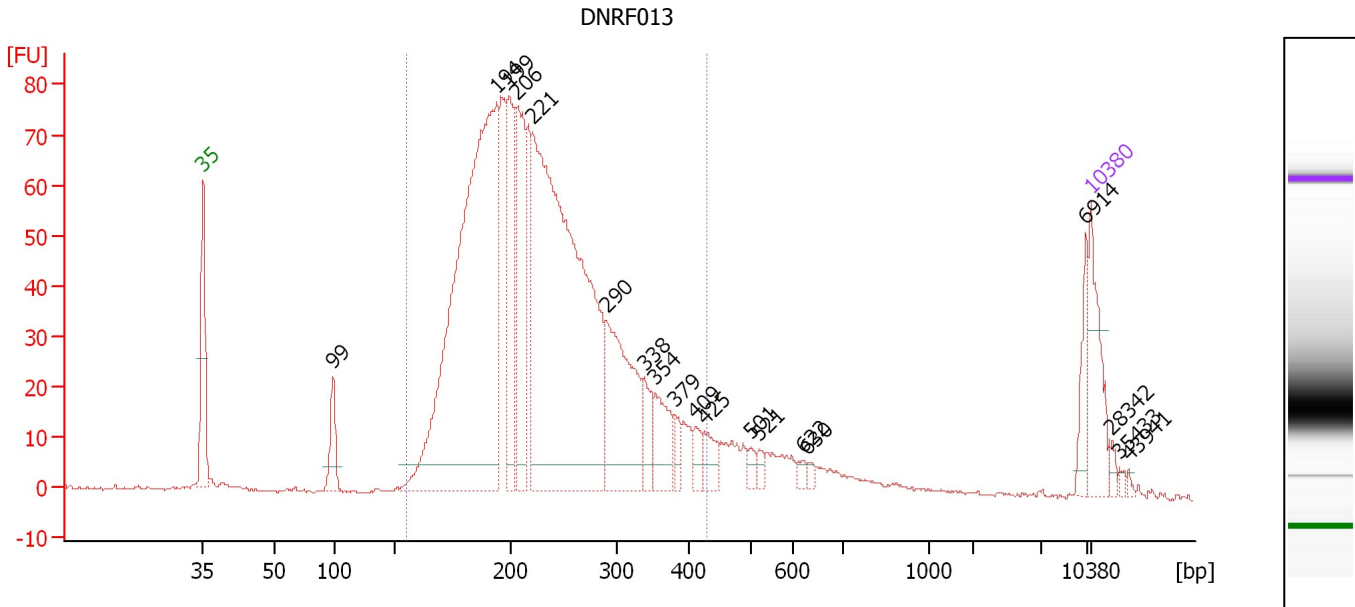
Peak table for Ladder

Peak	Size [bp]	Conc. [pg/μl]	Molarity [pmol/l]	Observations	Aligned Migration Time [s]
1	27	0.00	0.0		40.64
2	35	125.00	5,411.3	Lower Marker	43.00
3	50	150.00	4,545.5	Ladder Peak	48.58
4	100	150.00	2,272.7	Ladder Peak	53.31
5	150	150.00	1,515.2	Ladder Peak	58.03
6	200	150.00	1,136.4	Ladder Peak	67.26
7	300	150.00	757.6	Ladder Peak	75.60
8	400	150.00	568.2	Ladder Peak	81.35
9	500	150.00	454.5	Ladder Peak	86.16
10	600	150.00	378.8	Ladder Peak	89.47
11	700	150.00	324.7	Ladder Peak	93.46
12	1,000	150.00	227.3	Ladder Peak	100.29
13	2,000	150.00	113.6	Ladder Peak	103.77
14	3,000	150.00	75.8	Ladder Peak	109.09
15	7,000	150.00	32.5	Ladder Peak	112.70
16	10,380	75.00	10.9	Upper Marker	113.00

Assay Class: High Sensitivity DNA Assay
 Data Path: C:\...ents and Settings\Bioanalyzer\2015-02-12\2015-02-12_002.xad

Created: 2/12/2015 2:36:41 PM
 Modified: 2/12/2015 4:13:22 PM

Electropherogram Summary Continued ...



Overall Results for sample 1 : DNR013

Number of peaks found: 19 Corr. Area 1: 1,485.8
 Noise: 0.2

Peak table for sample 1 : DNR013

Peak	Size [bp]	Conc. [pg/μl]	Molarity [pmol/l]	Observations	Aligned Migration Time [s]
1	35	125.00	5,411.3	Lower Marker	43.00
2	99	65.53	998.0		53.26
3	194	1,193.34	9,317.6		66.17
4	199	222.87	1,694.4		67.13
5	206	236.14	1,732.7		67.80
6	221	1,156.35	7,923.2		69.02
7	290	255.88	1,335.7		74.78
8	338	53.08	238.1		77.77
9	354	73.86	316.2		78.69
10	379	22.71	90.7		80.17
11	409	22.20	82.2		81.80
12	425	32.72	116.6		82.56
13	501	13.81	41.8		86.18
14	521	10.62	30.9		86.85
15	622	9.46	23.1		90.34
16	630	6.49	15.6		90.68
17	6,914	41.73	9.1		112.62
18	10,380	75.00	10.9	Upper Marker	113.00
19	28,342	0.00	0.0		114.60
20	35,433	0.00	0.0		115.23
21	43,941	0.00	0.0		115.98

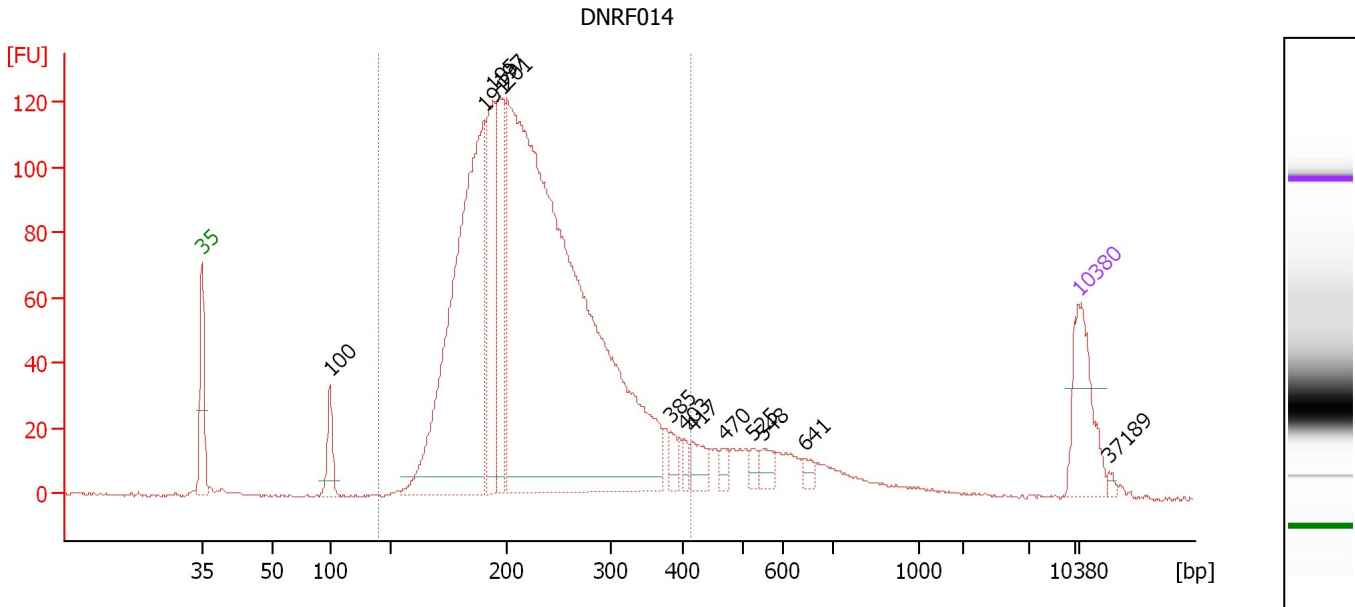
Region table for sample 1 : DNR013

From [bp]	Average Size [bp]	To [bp]	Corr. Area	% of Total	Size distribution in CV [%]	Conc. [pg/μl]	Molarity [pmol/l]	Color
155	236	427	1,485.8	88	24.8	3,606.63	24,788.7	Blue

Assay Class: High Sensitivity DNA Assay
 Data Path: C:\...ents and Settings\Bioanalyzer\2015-02-12\2015-02-12_002.xad

Created: 2/12/2015 2:36:41 PM
 Modified: 2/12/2015 4:13:22 PM

Electropherogram Summary Continued ...



Overall Results for sample 2 : DNR014

Number of peaks found: 13 Corr. Area 1: 2,176.9
 Noise: 0.3

Peak table for sample 2 : DNR014

Peak	Size [bp]	Conc. [pg/μl]	Molarity [pmol/l]	Observations	Aligned Migration Time [s]
1	35	125.00	5,411.3	Lower Marker	43.00
2	100	54.30	826.7		53.26
3	191	775.69	6,166.9		65.52
4	195	227.08	1,769.0		66.25
5	197	160.26	1,229.5		66.80
6	201	1,760.77	13,266.3		67.36
7	385	18.20	71.7		80.47
8	403	12.02	45.2		81.49
9	417	28.45	103.4		82.17
10	470	13.07	42.1		84.73
11	525	12.16	35.1		86.98
12	548	18.48	51.1		87.75
13	641	10.00	23.6		91.11
14	10,380	75.00	10.9	Upper Marker	113.00
15	37,189	0.00	0.0		115.38

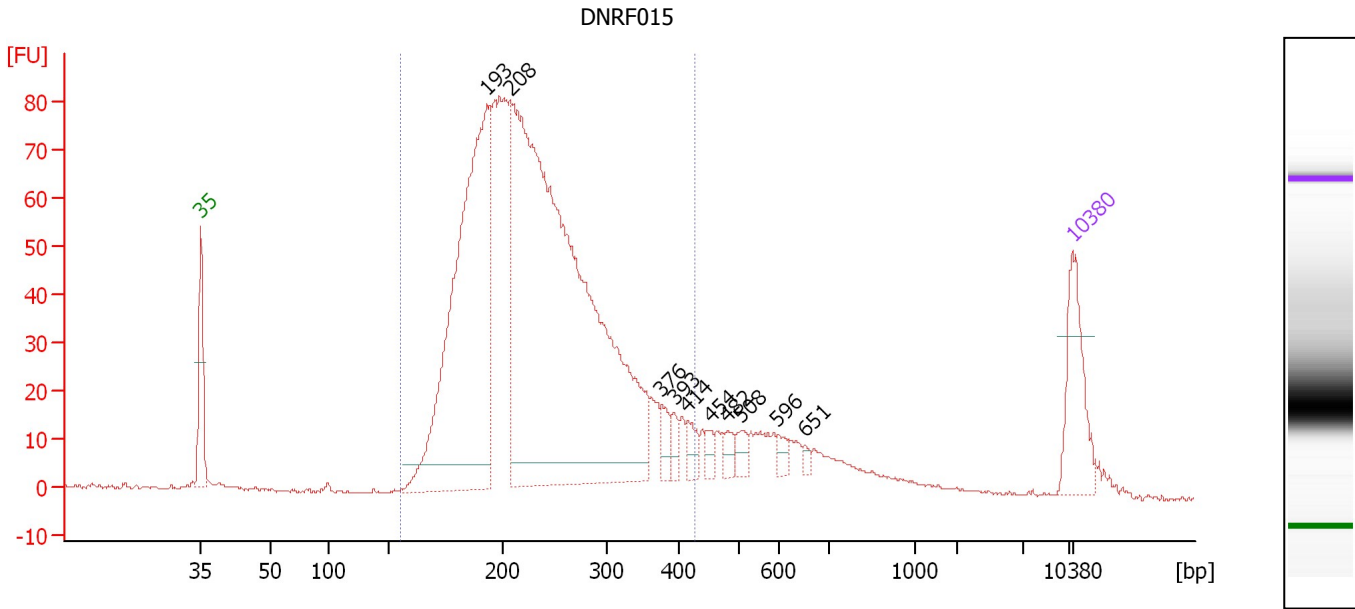
Region table for sample 2 : DNR014

From [bp]	Average Size [bp]	To [bp]	Corr. Area	% of Total	Size distribution in CV [%]	Conc. [pg/μl]	Molarity [pmol/l]	Color
141	233	414	2,176.9	88	23.4	2,903.28	20,035.7	Blue

Assay Class: High Sensitivity DNA Assay
 Data Path: C:\...ents and Settings\Bioanalyzer\2015-02-12\2015-02-12_002.xad

Created: 2/12/2015 2:36:41 PM
 Modified: 2/12/2015 4:13:22 PM

Electropherogram Summary Continued ...



Overall Results for sample 3 : DNR015

Number of peaks found: 10 Corr. Area 1: 1,502.4
 Noise: 0.2

Peak table for sample 3 : DNR015

Peak	Size [bp]	Conc. [pg/μl]	Molarity [pmol/l]	Observations	Aligned Migration Time [s]
1	35	125.00	5,411.3	Lower Marker	43.00
2	193	766.69	6,015.6		65.99
3	208	1,496.93	10,912.3		67.92
4	376	22.83	91.9		79.99
5	393	15.76	60.7		80.98
6	414	22.38	81.8		82.05
7	454	12.55	41.9		83.93
8	482	16.11	50.6		85.30
9	508	17.89	53.4		86.41
10	596	11.94	30.4		89.32
11	651	5.68	13.2		91.51
12	10,380	75.00	10.9	Upper Marker	113.00

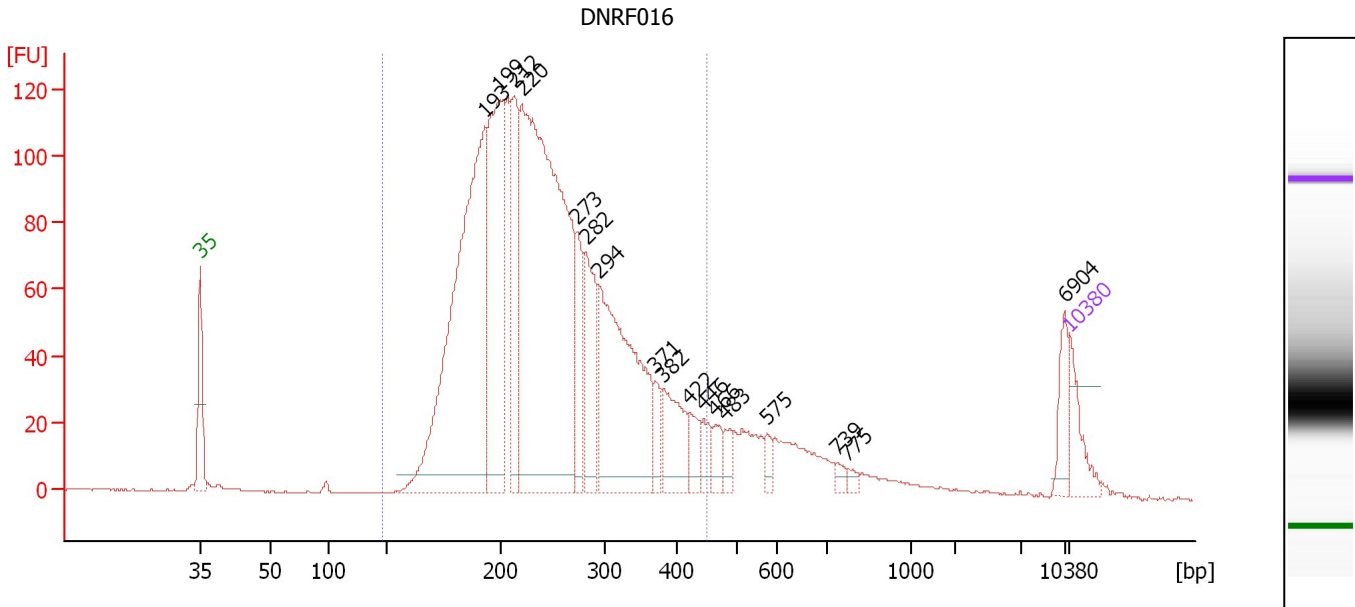
Region table for sample 3 : DNR015

From [bp]	Average Size [bp]	To [bp]	Corr. Area	% of Total	Size distribution in CV [%]	Conc. [pg/μl]	Molarity [pmol/l]	Color
156	240	427	1,502.4	87	24.6	2,705.36	18,263.1	Blue

Assay Class: High Sensitivity DNA Assay
 Data Path: C:\...ents and Settings\Bioanalyzer\2015-02-12\2015-02-12_002.xad

Created: 2/12/2015 2:36:41 PM
 Modified: 2/12/2015 4:13:22 PM

Electropherogram Summary Continued ...



Overall Results for sample 4 : DNR016

Number of peaks found: 17 Corr. Area 1: 2,324.3
 Noise: 0.2

Peak table for sample 4 : DNR016

Peak	Size [bp]	Conc. [pg/μl]	Molarity [pmol/l]	Observations	Aligned Migration Time [s]
1	35	125.00	5,411.3	Lower Marker	43.00
2	193	1,425.36	11,197.5		65.95
3	199	690.32	5,258.2		67.06
4	212	340.35	2,431.9		68.27
5	220	1,875.00	12,926.2		68.91
6	273	177.18	981.9		73.38
7	282	258.90	1,392.7		74.07
8	294	716.66	3,692.7		75.10
9	371	66.56	272.1		79.65
10	382	167.74	665.8		80.30
11	422	62.62	224.9		82.40
12	446	49.20	167.1		83.56
13	466	48.35	157.3		84.51
14	483	39.04	122.5		85.33
15	575	27.57	72.7		88.64
16	739	15.45	31.7		94.35
17	775	14.65	28.6		95.17
18	6,904	67.97	14.9		112.61
19	10,380	75.00	10.9	Upper Marker	113.00

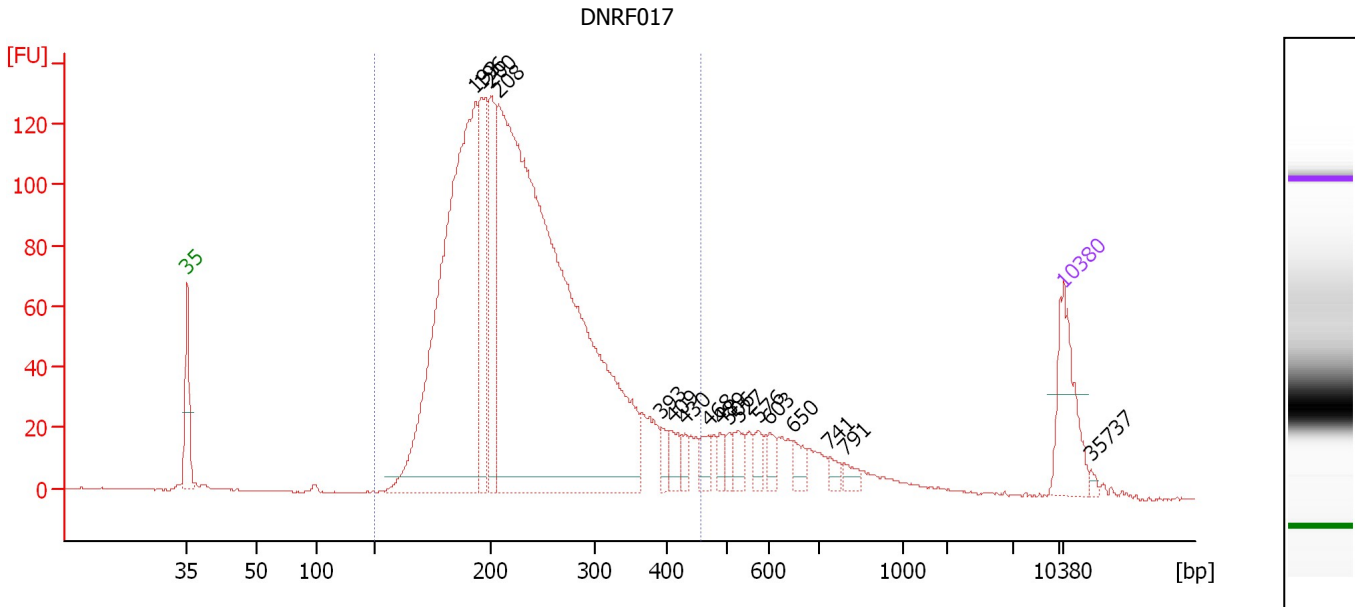
Region table for sample 4 : DNR016

From [bp]	Average Size [bp]	To [bp]	Corr. Area	% of Total	Size distribution in CV [%]	Conc. [pg/μl]	Molarity [pmol/l]	Color
147	249	450	2,324.3	88	26.1	6,074.60	39,964.9	Blue

Assay Class: High Sensitivity DNA Assay
 Data Path: C:\...ents and Settings\Bioanalyzer\2015-02-12\2015-02-12_002.xad

Created: 2/12/2015 2:36:41 PM
 Modified: 2/12/2015 4:13:22 PM

Electropherogram Summary Continued ...



Overall Results for sample 5 : DNR017

Number of peaks found: 17 Corr. Area 1: 2,371.8
 Noise: 0.2

Peak table for sample 5 : DNR017

Peak	Size [bp]	Conc. [pg/μl]	Molarity [pmol/l]	Observations	Aligned Migration Time [s]
1	35	125.00	5,411.3	Lower Marker	43.00
2	193	927.67	7,270.7		66.03
3	196	206.47	1,596.9		66.51
4	200	166.55	1,260.0		67.29
5	208	1,709.37	12,477.3		67.89
6	393	16.12	62.1		80.95
7	409	26.50	98.2		81.77
8	430	14.25	50.3		82.77
9	468	21.67	70.1		84.64
10	489	14.77	45.8		85.63
11	506	13.85	41.4		86.37
12	527	24.02	69.0		87.06
13	576	15.66	41.2		88.67
14	603	17.25	43.4		89.58
15	650	20.37	47.5		91.44
16	741	10.67	21.8		94.39
17	791	12.40	23.8		95.52
18	10,380	75.00	10.9	Upper Marker	113.00
19	35,737	0.00	0.0		115.26

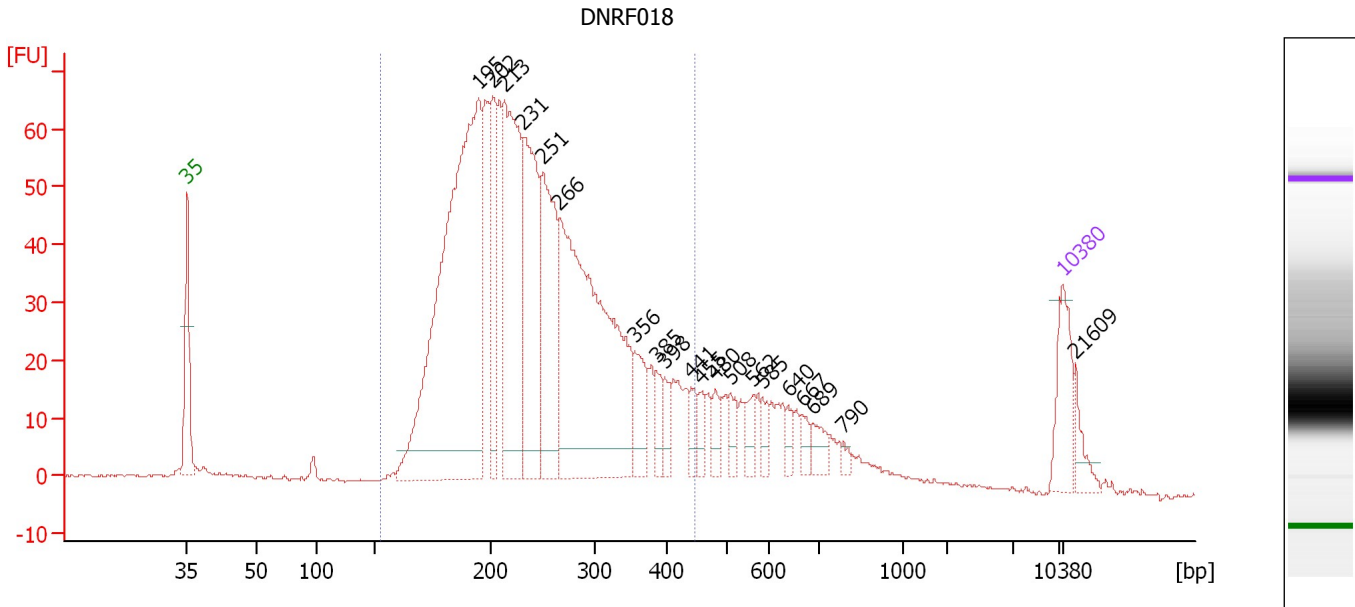
Region table for sample 5 : DNR017

From [bp]	Average Size [bp]	To [bp]	Corr. Area	% of Total	Size distribution in CV [%]	Conc. [pg/μl]	Molarity [pmol/l]	Color
149	241	458	2,371.8	88	26.3	3,067.83	20,818.0	Blue

Assay Class: High Sensitivity DNA Assay
 Data Path: C:\...ents and Settings\Bioanalyzer\2015-02-12\2015-02-12_002.xad

Created: 2/12/2015 2:36:41 PM
 Modified: 2/12/2015 4:13:22 PM

Electropherogram Summary Continued ...



Overall Results for sample 6 : DNR F018

Number of peaks found: 20 Corr. Area 1: 1,351.7
 Noise: 0.2


Peak table for sample 6 : DNR F018

Peak	Size [bp]	Conc. [pg/μl]	Molarity [pmol/l]	Observations	Aligned Migration Time [s]
1	35	125.00	5,411.3	Lower Marker	43.00
2	195	1,231.98	9,578.3		66.32
3	202	189.53	1,420.2		67.45
4	213	499.41	3,549.9		68.36
5	231	372.59	2,439.6		69.88
6	251	322.38	1,948.5		71.49
7	266	847.19	4,819.9		72.79
8	356	84.53	359.7		78.83
9	385	39.74	156.5		80.48
10	398	31.79	121.1		81.21
11	441	29.48	101.4		83.30
12	455	28.39	94.5		83.99
13	480	29.46	92.9		85.21
14	508	32.67	97.4		86.42
15	562	30.20	81.4		88.20
16	585	21.92	56.7		88.99
17	640	20.65	48.9		91.07
18	667	20.14	45.7		92.16
19	689	30.43	66.9		93.02
20	790	9.90	19.0		95.50
21	10,380	75.00	10.9	Upper Marker	113.00
22	21,609	0.00	0.0		114.00

Assay Class: High Sensitivity DNA Assay
Data Path: C:\...ents and Settings\Bioanalyzer\2015-02-12\2015-02-12_002.xad

Created: 2/12/2015 2:36:41 PM
Modified: 2/12/2015 4:13:22 PM

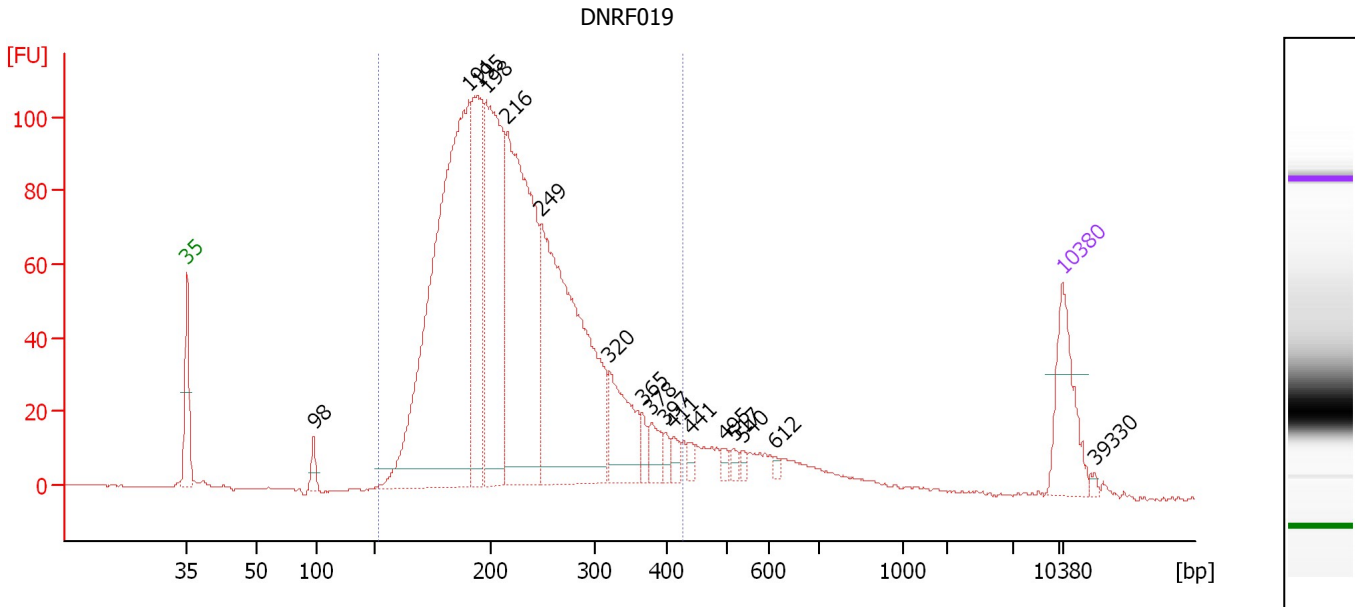
Electropherogram Summary Continued ...**... Region table for sample 6 : DNRF018**

From [bp]	Average Size [bp]	To [bp]	Corr. Area	% of Total	Size distribution in CV [%]	Conc. [pg/μl]	Molarity [pmol/l]	Co lor
152	250	448	1,351.7	84	27.1	4,204.38	27,757.7	

Assay Class: High Sensitivity DNA Assay
 Data Path: C:\...ents and Settings\Bioanalyzer\2015-02-12\2015-02-12_002.xad

Created: 2/12/2015 2:36:41 PM
 Modified: 2/12/2015 4:13:22 PM

Electropherogram Summary Continued ...



Overall Results for sample 7 : DNRFO19

Number of peaks found: 17 Corr. Area 1: 1,981.3
 Noise: 0.2

Peak table for sample 7 : DNRFO19

Peak	Size [bp]	Conc. [pg/μl]	Molarity [pmol/l]	Observations	Aligned Migration Time [s]
1	35	125.00	5,411.3	Lower Marker	43.00
2	98	21.97	339.4		53.12
3	191	917.32	7,294.0		65.52
4	195	267.74	2,085.0		66.26
5	198	415.01	3,177.7		66.87
6	216	549.99	3,853.6		68.62
7	249	587.15	3,576.8		71.32
8	320	114.64	543.2		76.73
9	365	16.77	69.6		79.35
10	378	31.19	125.0		80.09
11	397	11.78	44.9		81.19
12	411	13.73	50.6		81.88
13	441	9.17	31.5		83.32
14	495	7.29	22.3		85.94
15	517	7.93	23.2		86.73
16	540	6.85	19.2		87.47
17	612	4.56	11.3		89.96
18	10,380	75.00	10.9	Upper Marker	113.00
19	39,330	0.00	0.0		115.57

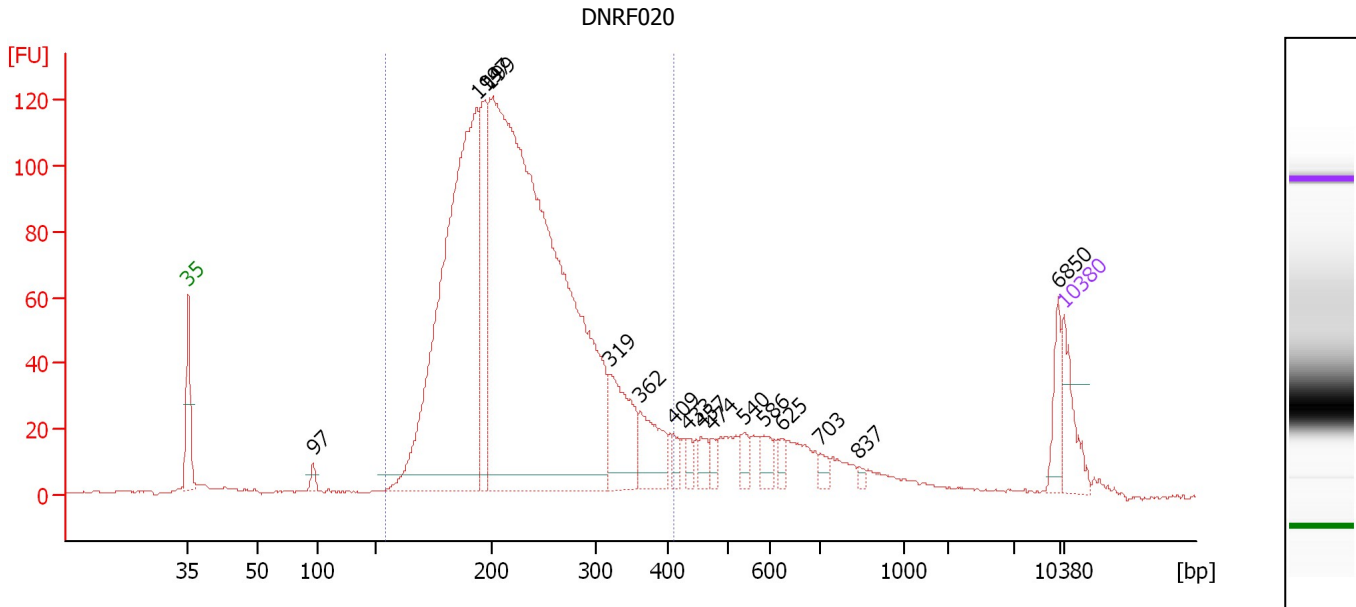
Region table for sample 7 : DNRFO19

From [bp]	Average Size [bp]	To [bp]	Corr. Area	% of Total	Size distribution in CV [%]	Conc. [pg/μl]	Molarity [pmol/l]	Color
151	232	426	1,981.3	90	24.6	3,017.62	21,052.3	Blue

Assay Class: High Sensitivity DNA Assay
 Data Path: C:\...ents and Settings\Bioanalyzer\2015-02-12\2015-02-12_002.xad

Created: 2/12/2015 2:36:41 PM
 Modified: 2/12/2015 4:13:22 PM

Electropherogram Summary Continued ...



Overall Results for sample 8 : DNRFO20

Number of peaks found: 16 Corr. Area 1: 2,138.0
 Noise: 0.2

Peak table for sample 8 : DNRFO20

Peak	Size [bp]	Conc. [pg/μl]	Molarity [pmol/l]	Observations	Aligned Migration Time [s]
1	35	125.00	5,411.3	Lower Marker	43.00
2	97	22.26	347.9		53.02
3	194	1,554.94	12,152.9		66.13
4	197	304.79	2,342.2		66.74
5	199	2,994.47	22,766.7		67.13
6	319	211.92	1,007.5		76.67
7	362	126.96	531.6		79.15
8	409	28.34	105.1		81.77
9	433	24.61	86.1		82.94
10	457	31.02	102.9		84.08
11	474	24.13	77.1		84.90
12	540	34.03	95.5		87.47
13	586	37.78	97.7		89.00
14	625	19.14	46.4		90.48
15	703	18.23	39.3		93.53
16	837	8.64	15.6		96.58
17	6,850	54.02	11.9		112.56
18	10,380	75.00	10.9	Upper Marker	113.00

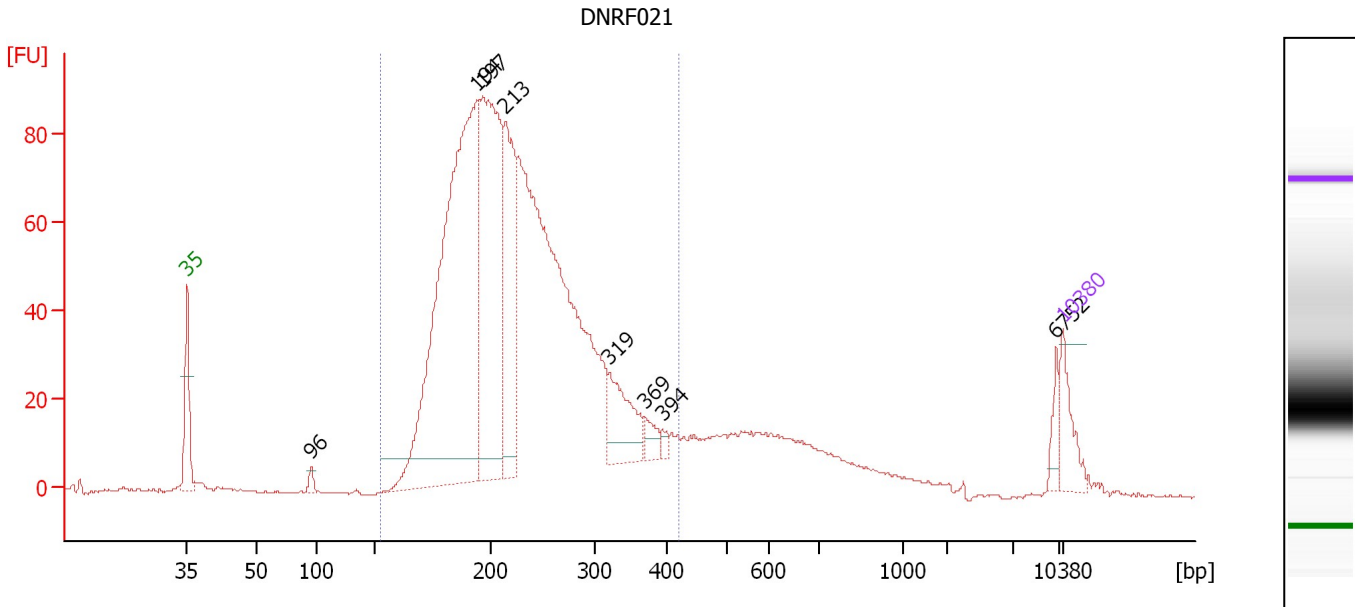
Region table for sample 8 : DNRFO20

From [bp]	Average Size [bp]	To [bp]	Corr. Area	% of Total	Size distribution in CV [%]	Conc. [pg/μl]	Molarity [pmol/l]	Color
154	235	411	2,138.0	82	23.3	5,150.44	35,337.0	Blue

Assay Class: High Sensitivity DNA Assay
 Data Path: C:\...ents and Settings\Bioanalyzer\2015-02-12\2015-02-12_002.xad

Created: 2/12/2015 2:36:41 PM
 Modified: 2/12/2015 4:13:22 PM

Electropherogram Summary Continued ...



Overall Results for sample 9 : DNRFO21

Number of peaks found: 8 Corr. Area 1: 1,563.3
 Noise: 0.2

Peak table for sample 9 : DNRFO21

Peak	Size [bp]	Conc. [pg/μl]	Molarity [pmol/l]	Observations	Aligned Migration Time [s]
1	35	125.00	5,411.3	Lower Marker	43.00
2	96	21.31	337.0		52.91
3	194	1,828.46	14,267.7		66.19
4	197	952.65	7,344.2		66.62
5	213	461.65	3,279.4		68.37
6	319	190.26	902.5		76.71
7	369	41.56	170.4		79.59
8	394	15.16	58.3		80.99
9	6,752	38.19	8.6		112.48
10	10,380	75.00	10.9	Upper Marker	113.00

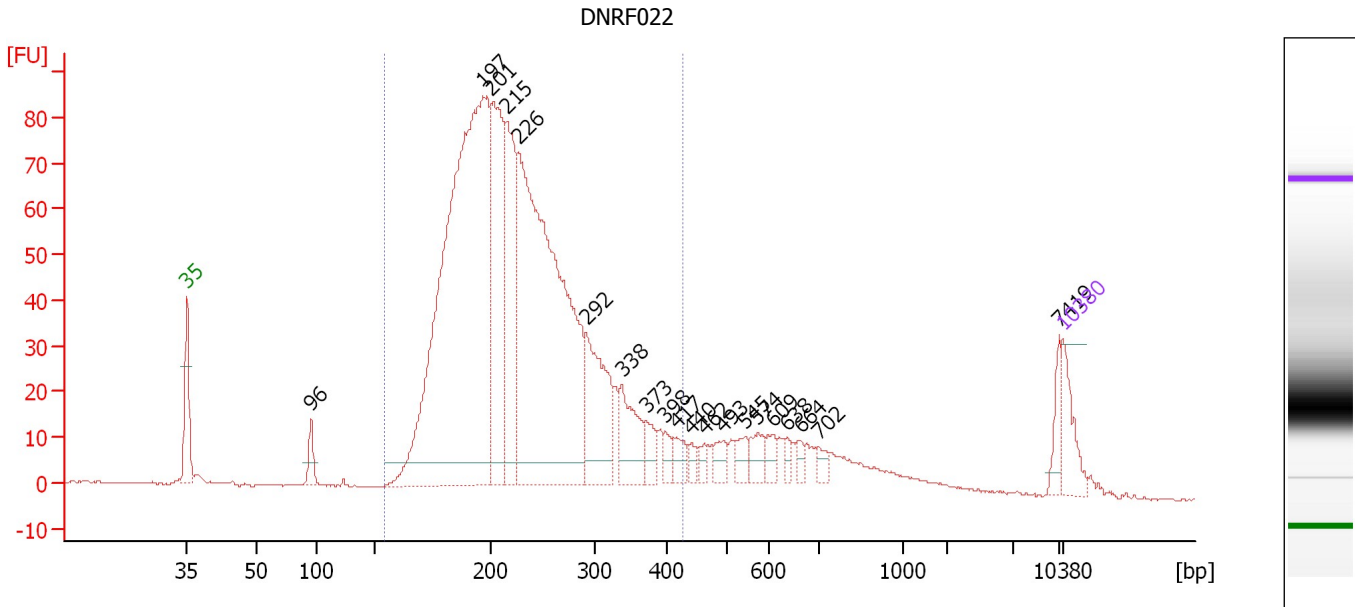
Region table for sample 9 : DNRFO21

From [bp]	Average Size [bp]	To [bp]	Corr. Area	% of Total	Size distribution in CV [%]	Conc. [pg/μl]	Molarity [pmol/l]	Color
153	235	421	1,563.3	85	23.9	5,716.83	39,243.6	Blue

Assay Class: High Sensitivity DNA Assay
 Data Path: C:\...ents and Settings\Bioanalyzer\2015-02-12\2015-02-12_002.xad

Created: 2/12/2015 2:36:41 PM
 Modified: 2/12/2015 4:13:22 PM

Electropherogram Summary Continued ...



Overall Results for sample 10 : DNRFO22

Number of peaks found: 20 Corr. Area 1: 1,470.1
 Noise: 0.2


Peak table for sample 10 : DNRFO22

Peak	Size [bp]	Conc. [pg/μl]	Molarity [pmol/l]	Observations	Aligned Migration Time [s]
1	35	125.00	5,411.3	Lower Marker	43.00
2	96	59.73	943.9		52.92
3	197	2,430.47	18,721.1		66.66
4	201	604.59	4,566.6		67.31
5	215	457.09	3,216.1		68.54
6	226	1,785.18	11,946.6		69.46
7	292	330.22	1,715.1		74.91
8	338	167.86	753.4		77.76
9	373	56.21	228.5		79.78
10	398	30.98	118.0		81.23
11	417	46.81	170.3		82.15
12	440	22.31	76.8		83.29
13	462	22.93	75.2		84.34
14	493	43.29	133.0		85.83
15	545	39.16	109.0		87.63
16	574	50.30	132.8		88.60
17	609	32.19	80.1		89.83
18	638	19.41	46.1		90.97
19	664	19.53	44.6		92.02
20	702	24.56	53.0		93.51
21	7,419	53.78	11.0		112.74
22	10,380	75.00	10.9	Upper Marker	113.00

Assay Class: High Sensitivity DNA Assay
Data Path: C:\...ents and Settings\Bioanalyzer\2015-02-12\2015-02-12_002.xad

Created: 2/12/2015 2:36:41 PM
Modified: 2/12/2015 4:13:22 PM

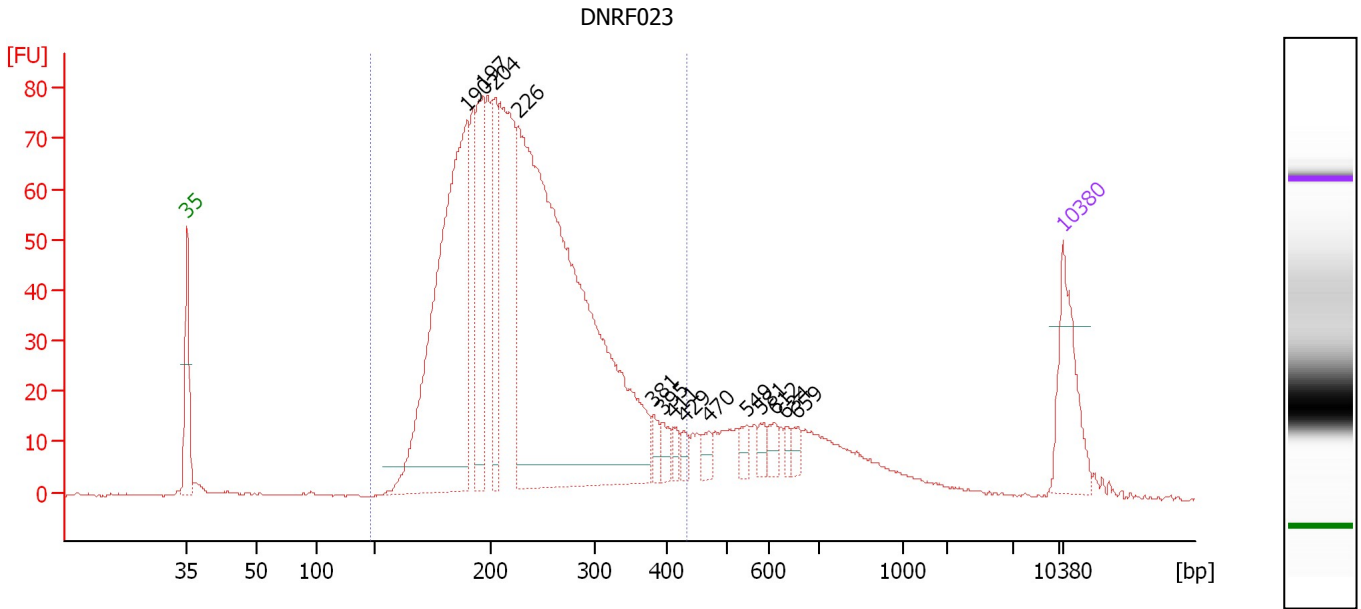
Electropherogram Summary Continued ...**... Region table for sample 10 : DNRF022**

From [bp]	Average Size [bp]	To [bp]	Corr. Area	% of Total	Size distribution in CV [%]	Conc. [pg/μl]	Molarity [pmol/l]	Co lor
154	235	426	1,470.1	84	24.0	6,135.99	42,067.1	

Assay Class: High Sensitivity DNA Assay
 Data Path: C:\...ents and Settings\Bioanalyzer\2015-02-12\2015-02-12_002.xad

Created: 2/12/2015 2:36:41 PM
 Modified: 2/12/2015 4:13:22 PM

Electropherogram Summary Continued ...



Overall Results for sample 11 : DNR023

Number of peaks found: 14 Corr. Area 1: 1,509.8
 Noise: 0.2

Peak table for sample 11 : DNR023

Peak	Size [bp]	Conc. [pg/μl]	Molarity [pmol/l]	Observations	Aligned Migration Time [s]
1	35	125.00	5,411.3	Lower Marker	43.00
2	190	681.04	5,432.8		65.41
3	197	175.71	1,353.9		66.64
4	204	131.09	972.6		67.61
5	226	1,200.64	8,031.9		69.47
6	381	17.86	71.0		80.25
7	395	16.56	63.6		81.05
8	411	12.40	45.7		81.89
9	429	12.83	45.3		82.73
10	470	16.90	54.5		84.72
11	549	14.69	40.6		87.77
12	581	12.83	33.5		88.83
13	612	14.63	36.2		89.93
14	634	8.91	21.3		90.82
15	659	11.91	27.4		91.83
16	10,380	75.00	10.9	Upper Marker	113.00

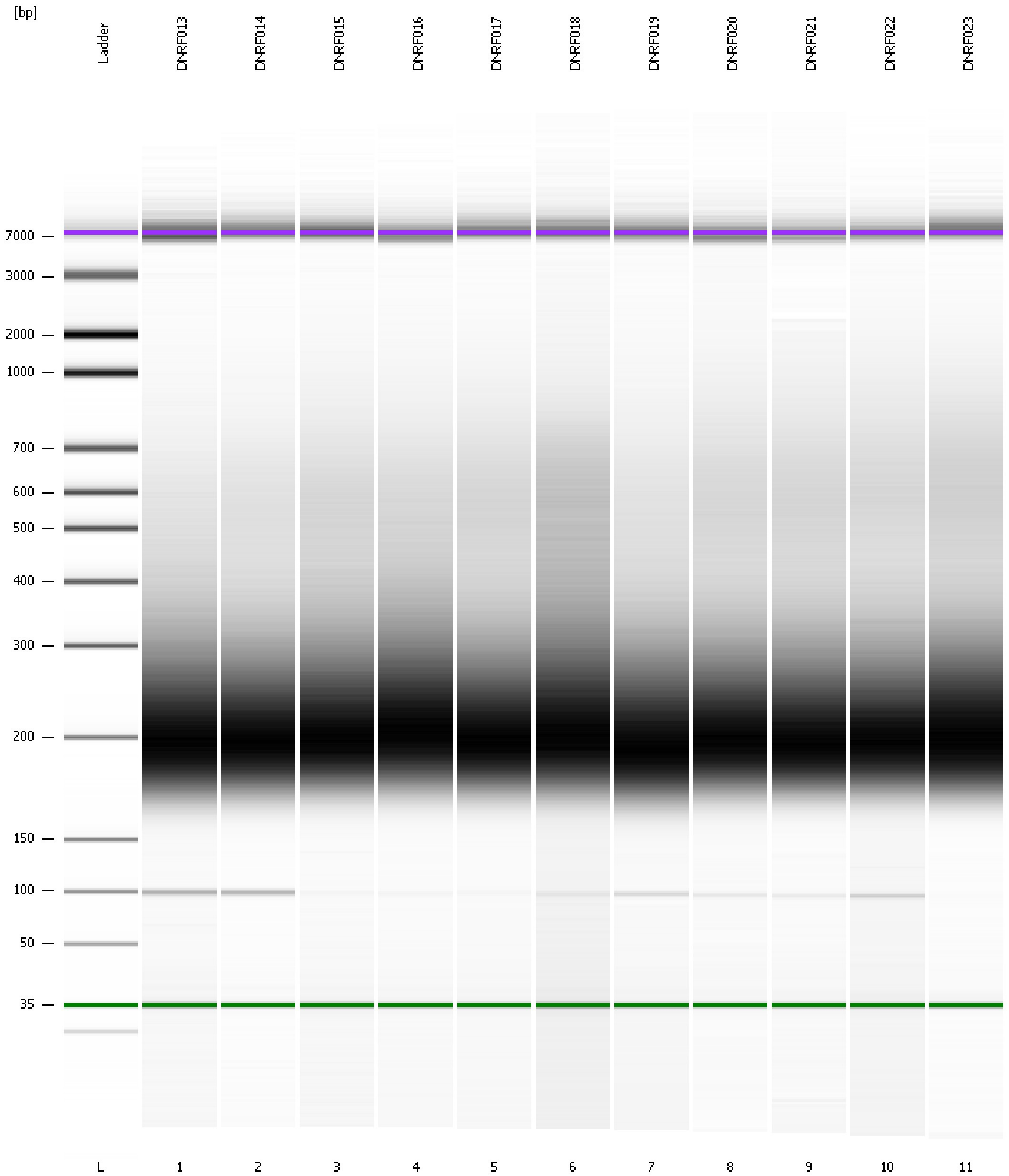
Region table for sample 11 : DNR023

From [bp]	Average Size [bp]	To [bp]	Corr. Area	% of Total	Size distribution in CV [%]	Conc. [pg/μl]	Molarity [pmol/l]	Color
146	239	433	1,509.8	84	24.8	2,817.60	19,112.5	Blue

Assay Class: High Sensitivity DNA Assay
Data Path: C:\...ents and Settings\Bioanalyzer\2015-02-12\2015-02-12_002.xad

Created: 2/12/2015 2:36:41 PM
Modified: 2/12/2015 4:13:22 PM

Gel Image



Assay Class: High Sensitivity DNA Assay
 Data Path: C:\...ents and Settings\Bioanalyzer\2015-02-12\2015-02-12_002.xad

Created: 2/12/2015 2:36:41 PM
 Modified: 2/12/2015 4:13:22 PM

Run Logbook

Description	Number	Source	Category	Sub Category	Time	Time Zone	User	Host
Run ended on port 1 (Number of wells acquired: 12)		Instrument	Run		2/12/2015 3:17:59 PM	(GMT --08:00) Pacific Standard Time	UC Davis	D8XSMGH1
Run started on port 1 (File: C:\Documents and Settings\Bioanalyzer\2015-02-12\2015-02-12_002.xad)		Instrument	Run		2/12/2015 2:36:47 PM	(GMT --08:00) Pacific Standard Time	UC Davis	D8XSMGH1
Product Number : G2938B		Instrument	Run		2/12/2015 2:36:47 PM	(GMT --08:00) Pacific Standard Time	UC Davis	D8XSMGH1
Name :		Instrument	Run		2/12/2015 2:36:47 PM	(GMT --08:00) Pacific Standard Time	UC Davis	D8XSMGH1
Vendor : Agilent Technologies		Instrument	Run		2/12/2015 2:36:47 PM	(GMT --08:00) Pacific Standard Time	UC Davis	D8XSMGH1
Serial# : DE13701086		Instrument	Run		2/12/2015 2:36:47 PM	(GMT --08:00) Pacific Standard Time	UC Davis	D8XSMGH1
Firmware : C.01.069		Instrument	Run		2/12/2015 2:36:47 PM	(GMT --08:00) Pacific Standard Time	UC Davis	D8XSMGH1
Cartridge : Electrode		Instrument	Run		2/12/2015 2:36:47 PM	(GMT --08:00) Pacific Standard Time	UC Davis	D8XSMGH1