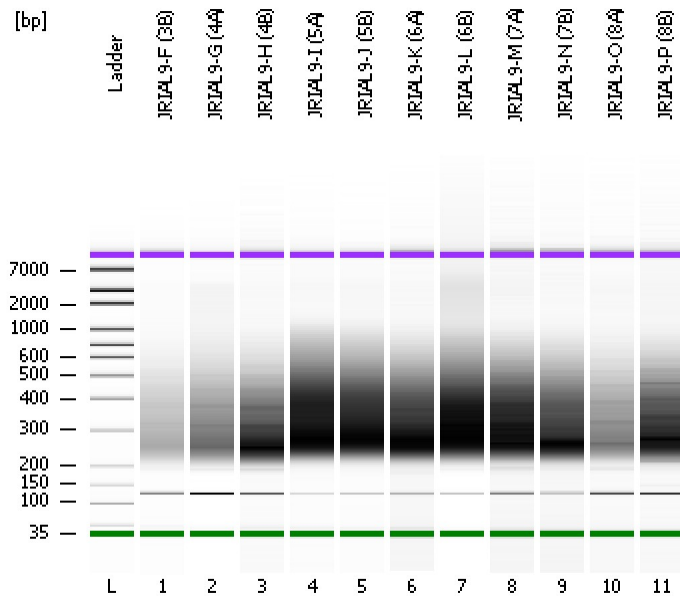


Assay Class: High Sensitivity DNA Assay  
Data Path: C:\...ents and Settings\Bioanalyzer\2015-02-18\2015-02-18\_003.xad

Created: 2/18/2015 3:25:39 PM  
Modified: 2/18/2015 4:06:11 PM

### Electrophoresis File Run Summary



#### Instrument Information:

Instrument Name: DE13701086      Firmware: C.01.069  
Serial#: DE13701086      Type: G2938B

#### Assay Information:

Assay Origin Path: C:\Program Files\Agilent\2100 bioanalyzer\2100 expert\assays\dsDNA\High Sensitivity DNA.xsy  
Assay Class: High Sensitivity DNA Assay  
Version: 1.03  
Assay Comments: Copyright © 2003-2010 Agilent Technologies

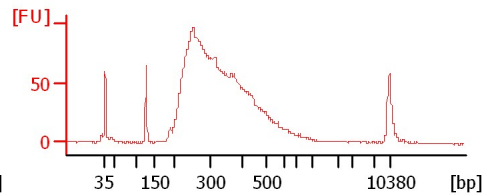
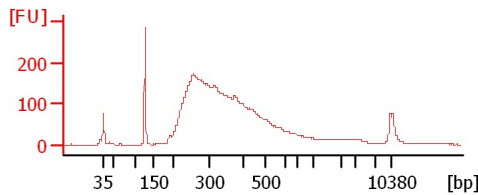
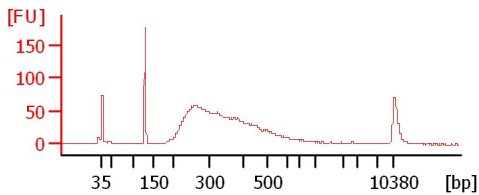
#### Chip Information:

Chip Lot #:  
Reagent Kit Lot #:  
Chip Comments:

JR1AL9-F (3B)

JR1AL9-G (4A)

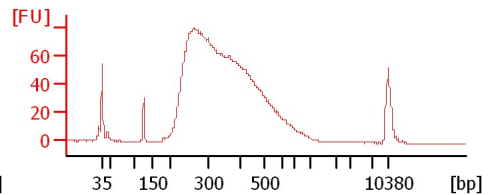
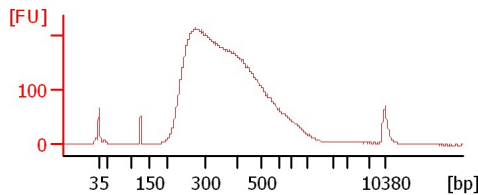
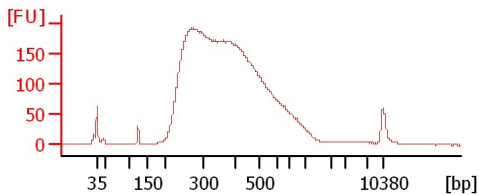
JR1AL9-H (4B)



JR1AL9-I (5A)

JR1AL9-J (5B)

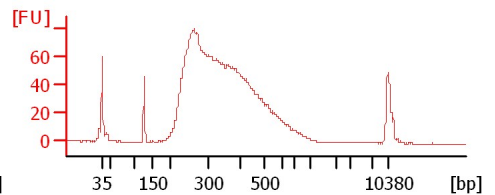
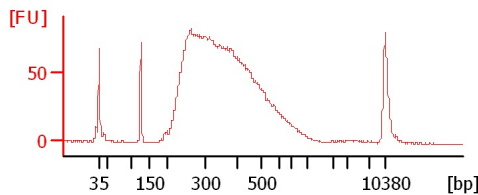
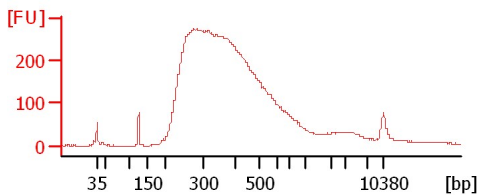
JR1AL9-K (6A)



JR1AL9-L (6B)

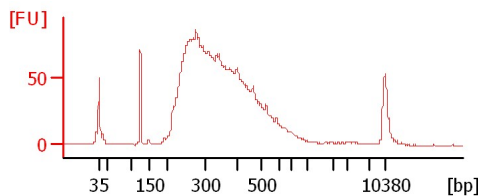
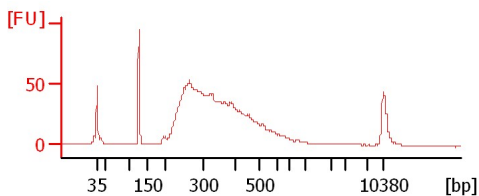
JR1AL9-M (7A)

JR1AL9-N (7B)



JR1AL9-O (8A)

JR1AL9-P (8B)



Assay Class: High Sensitivity DNA Assay  
Data Path: C:\...ents and Settings\Bioanalyzer\2015-02-18\2015-02-18\_003.xad

Created: 2/18/2015 3:25:39 PM  
Modified: 2/18/2015 4:06:11 PM

**Electrophoresis File Run Summary (Chip Summary)**

Sample Name	Sample Comment	Rest. Digest	Status	Observation	Result Label	Result Color
JRIAL9-F (3B)		<input type="checkbox"/>	✓			
JRIAL9-G (4A)		<input type="checkbox"/>	✓			
JRIAL9-H (4B)		<input type="checkbox"/>	✓			
JRIAL9-I (5A)		<input type="checkbox"/>	✓			
JRIAL9-J (5B)		<input type="checkbox"/>	✓			
JRIAL9-K (6A)		<input type="checkbox"/>	✓			
JRIAL9-L (6B)		<input type="checkbox"/>	✓			
JRIAL9-M (7A)		<input type="checkbox"/>	✓			
JRIAL9-N (7B)		<input type="checkbox"/>	✓			
JRIAL9-O (8A)		<input type="checkbox"/>	✓			
JRIAL9-P (8B)		<input type="checkbox"/>	✓			
Ladder		<input type="checkbox"/>	✓			

**Chip Lot #**

**Reagent Kit Lot #**

**Chip Comments :**

Assay Class: High Sensitivity DNA Assay  
Data Path: C:\...ents and Settings\Bioanalyzer\2015-02-18\2015-02-18\_003.xad

Created: 2/18/2015 3:25:39 PM  
Modified: 2/18/2015 4:06:11 PM

**Electrophoresis Assay Details**

**General Analysis Settings**

Number of Available Sample and Ladder Wells (Max.) : 12  
Minimum Visible Range [s] : 32  
Maximum Visible Range [s] : 138  
Start Analysis Time Range [s] : 33  
End Analysis Time Range [s] : 137.5  
Ladder Concentration [pg/μl] : 1950  
Uses Standard Area for Ladder Fragments  
Lower Marker Concentration [pg/μl] : 125  
Upper Marker Concentration [pg/μl] : 75  
Used Upper Marker for Quantitation  
Standard Curve Fit is Point to Point  
Show Data Aligned to Lower and Upper Marker

**Integrator Settings**

Integration Start Time [s] : 33.05  
Integration End Time [s] : 137  
Slope Threshold : 0.8  
Height Threshold [FU] : 5  
Area Threshold : 0.1  
Width Threshold [s] : 0.6  
Baseline Plateau [s] : 0.5

**Filter Settings**

Filter Width [s] : 0.5  
Polynomial Order : 4

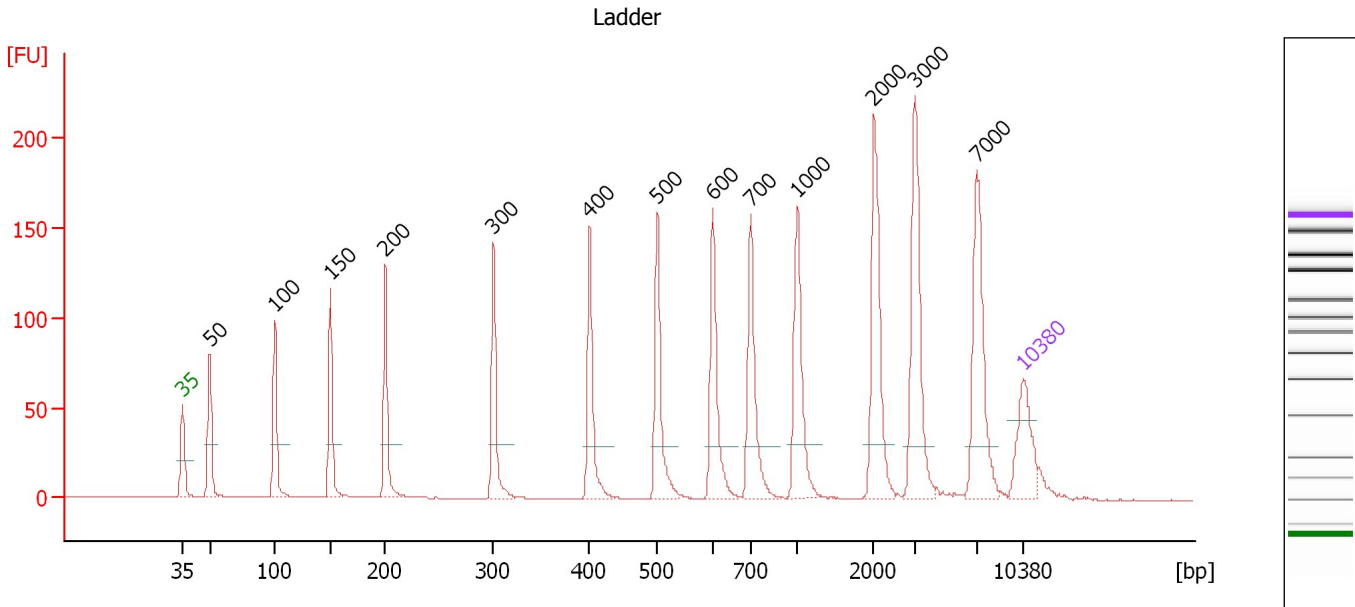
**Ladder**

Ladder Peak	Size	Area
1	35	160
2	50	210
3	100	208
4	150	221
5	200	242
6	300	270
7	400	305
8	500	306
9	600	336
10	700	321
11	1000	366
12	2000	413
13	3000	411
14	7000	400
15	10380	214

Assay Class: High Sensitivity DNA Assay  
 Data Path: C:\...ents and Settings\Bioanalyzer\2015-02-18\2015-02-18\_003.xad

Created: 2/18/2015 3:25:39 PM  
 Modified: 2/18/2015 4:06:11 PM

**Electropherogram Summary**



**Overall Results for Ladder**

Noise: 0.1

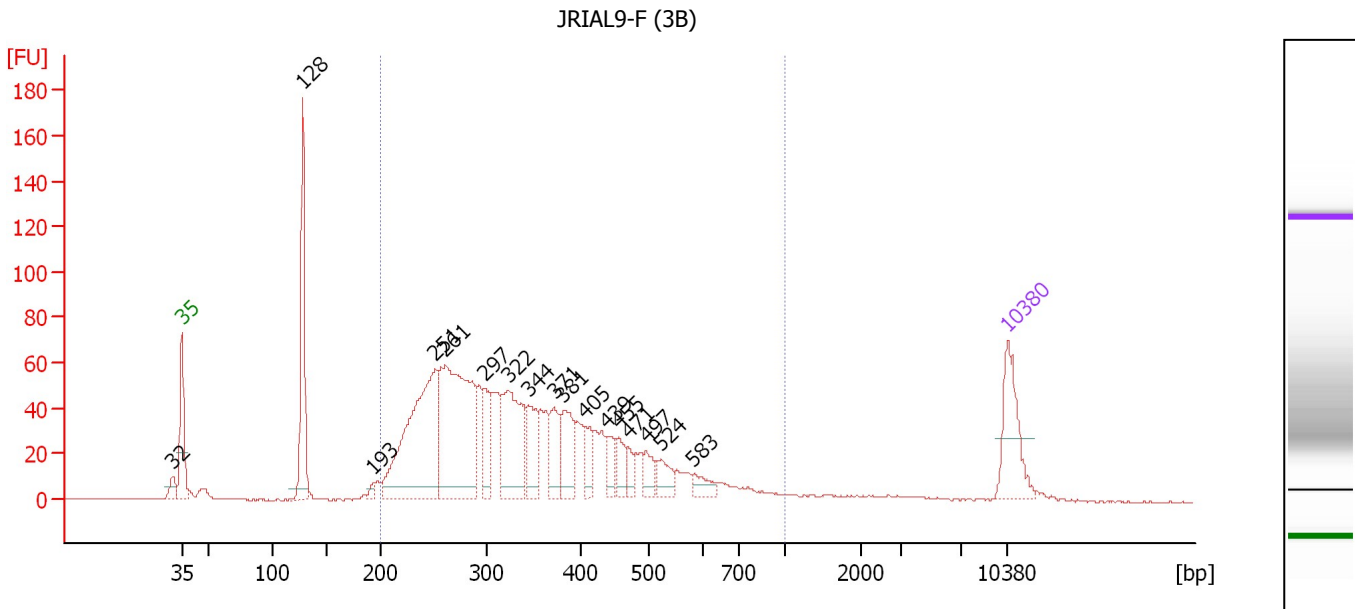
**Peak table for Ladder**

Peak	Size [bp]	Conc. [pg/μl]	Molarity [pmol/l]	Observations	Aligned Migration Time [s]
1	35	125.00	5,411.3	Lower Marker	43.00
2	50	150.00	4,545.5	Ladder Peak	45.27
3	100	150.00	2,272.7	Ladder Peak	50.68
4	150	150.00	1,515.2	Ladder Peak	55.30
5	200	150.00	1,136.4	Ladder Peak	59.88
6	300	150.00	757.6	Ladder Peak	68.89
7	400	150.00	568.2	Ladder Peak	76.89
8	500	150.00	454.5	Ladder Peak	82.53
9	600	150.00	378.8	Ladder Peak	87.15
10	700	150.00	324.7	Ladder Peak	90.30
11	1,000	150.00	227.3	Ladder Peak	94.17
12	2,000	150.00	113.6	Ladder Peak	100.56
13	3,000	150.00	75.8	Ladder Peak	104.03
14	7,000	150.00	32.5	Ladder Peak	109.14
15	10,380	75.00	10.9	Upper Marker	113.00

Assay Class: High Sensitivity DNA Assay  
 Data Path: C:\...ents and Settings\Bioanalyzer\2015-02-18\2015-02-18\_003.xad

Created: 2/18/2015 3:25:39 PM  
 Modified: 2/18/2015 4:06:11 PM

**Electropherogram Summary Continued ...**



**Overall Results for sample 1 : JRIAL9-F (3B)**

Number of peaks found: 17                      Corr. Area 1: 1,456.6  
 Noise: 0.2

**Peak table for sample 1 : JRIAL9-F (3B)**

Peak	Size [bp]	Conc. [pg/μl]	Molarity [pmol/l]	Observations	Aligned Migration Time [s]
1	32	0.00	0.0		42.23
2	35	125.00	5,411.3	Lower Marker	43.00
3	128	224.51	2,660.4		53.26
4	193	9.91	77.9		59.22
5	251	366.82	2,211.0		64.51
6	261	388.45	2,255.9		65.37
7	297	64.63	329.7		68.62
8	322	172.84	813.2		70.66
9	344	67.60	297.7		72.42
10	371	57.91	236.7		74.54
11	381	76.01	302.4		75.36
12	405	36.69	137.3		77.16
13	439	31.17	107.7		79.06
14	455	31.51	104.9		80.01
15	471	19.47	62.7		80.87
16	497	27.96	85.2		82.36
17	524	32.07	92.8		83.63
18	583	21.00	54.5		86.38
19	10,380	75.00	10.9	Upper Marker	113.00

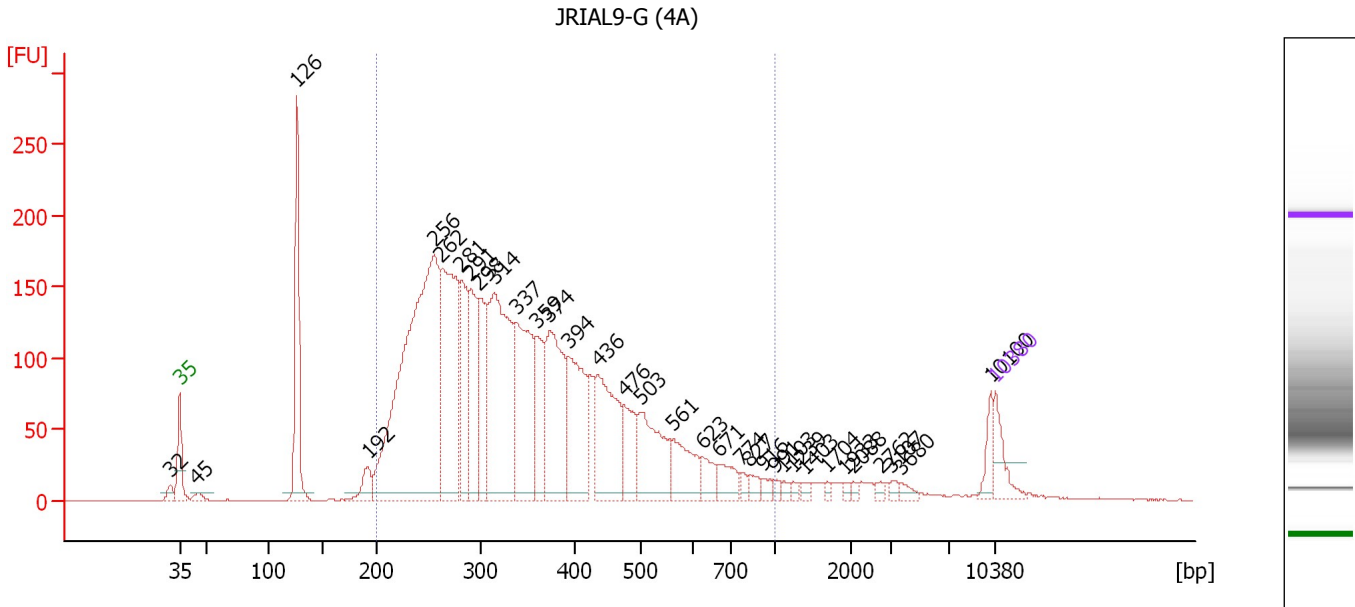
**Region table for sample 1 : JRIAL9-F (3B)**

From [bp]	Average Size [bp]	To [bp]	Corr. Area	% of Total	Size distribution in CV [%]	Conc. [pg/μl]	Molarity [pmol/l]	Color
200	356	1,000	1,456.6	86	33.4	1,822.40	8,776.6	Blue

Assay Class: High Sensitivity DNA Assay  
 Data Path: C:\...ents and Settings\Bioanalyzer\2015-02-18\2015-02-18\_003.xad

Created: 2/18/2015 3:25:39 PM  
 Modified: 2/18/2015 4:06:11 PM

**Electropherogram Summary Continued ...**



**Overall Results for sample 2 : JRIAL9-G (4A)**

Number of peaks found: 34                      Corr. Area 1: 4,267.6  
 Noise: 0.3

**Peak table for sample 2 : JRIAL9-G (4A)**

Peak	Size [bp]	Conc. [pg/μl]	Molarity [pmol/l]	Observations	Aligned Migration Time [s]
1	32	0.00	0.0		42.18
2	35	125.00	5,411.3	Lower Marker	43.00
3	45	28.35	954.5		44.51
4	126	504.00	6,068.0		53.07
5	192	78.25	617.0		59.16
6	256	1,797.56	10,638.1		64.93
7	262	768.11	4,440.0		65.48
8	281	309.04	1,663.9		67.22
9	291	327.01	1,705.3		68.04
10	298	241.46	1,227.0		68.73
11	314	827.20	3,991.9		70.01
12	337	520.60	2,337.5		71.89
13	359	216.38	912.7		73.63
14	374	464.77	1,885.3		74.77
15	394	377.35	1,452.8		76.37
16	436	375.95	1,305.5		78.94
17	476	149.23	474.9		81.18
18	503	287.58	867.1		82.65
19	561	157.71	425.9		85.35
20	623	65.31	158.9		87.87
21	671	74.80	169.0		89.38
22	774	20.66	40.4		91.25
23	827	27.05	49.6		91.94
24	916	21.69	35.9		93.09
25	991	12.42	19.0		94.05

Assay Class: High Sensitivity DNA Assay  
 Data Path: C:\...ents and Settings\Bioanalyzer\2015-02-18\2015-02-18\_003.xad


Created: 2/18/2015 3:25:39 PM  
 Modified: 2/18/2015 4:06:11 PM

**Electropherogram Summary Continued ...**

**... Peak table for sample 2 : JRIAL9-G (4A)**

Peak	Size [bp]	Conc. [pg/μl]	Molarity [pmol/l]	Observations	Aligned Migration Time [s]
26	1,103	13.74	18.9		94.82
27	1,239	13.06	16.0		95.69
28	1,403	14.59	15.8		96.75
29	1,704	9.25	8.2		98.67
30	1,933	8.46	6.6		100.14
31	2,088	9.92	7.2		100.87
32	2,762	12.00	6.6		103.20
33	3,107	10.68	5.2		104.16
34	3,680	16.28	6.7		104.90
35	10,100	50.03	7.5		112.68
36	10,380	75.00	10.9	Upper Marker	113.00

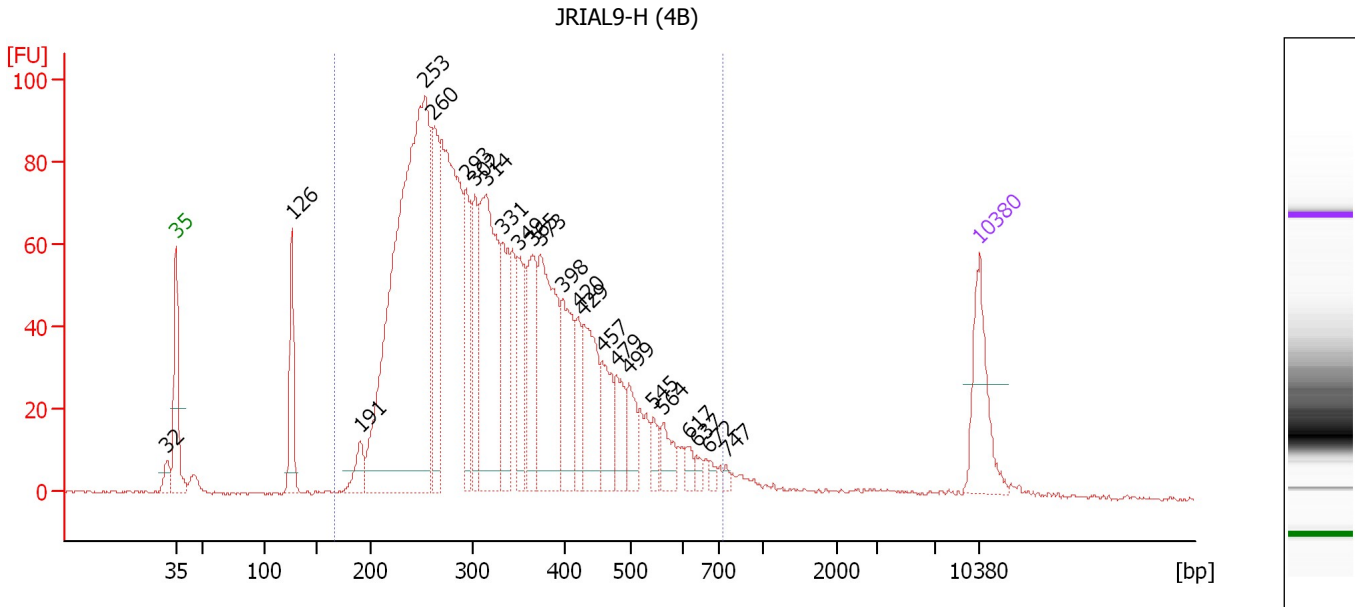
**Region table for sample 2 : JRIAL9-G (4A)**

From [bp]	Average Size [bp]	To [bp]	Corr. Area	% of Total	Size distribution in CV [%]	Conc. [pg/μl]	Molarity [pmol/l]	Color
200	361	1,000	4,267.6	89	35.4	7,197.30	34,490.4	

Assay Class: High Sensitivity DNA Assay  
 Data Path: C:\...ents and Settings\Bioanalyzer\2015-02-18\2015-02-18\_003.xad

Created: 2/18/2015 3:25:39 PM  
 Modified: 2/18/2015 4:06:11 PM

**Electropherogram Summary Continued ...**



**Overall Results for sample 3 : JRIAL9-H (4B)**

Number of peaks found: 24                      Corr. Area 1: 2,152.1  
 Noise: 0.3

**Peak table for sample 3 : JRIAL9-H (4B)**

Peak	Size [bp]	Conc. [pg/μl]	Molarity [pmol/l]	Observations	Aligned Migration Time [s]
1	32	0.00	0.0		42.26
2	35	125.00	5,411.3	Lower Marker	43.00
3	126	105.35	1,268.3		53.07
4	191	37.45	296.9		59.06
5	253	951.89	5,695.4		64.68
6	260	166.75	970.1		65.33
7	293	118.19	610.4		68.30
8	302	105.39	529.0		69.04
9	314	304.54	1,469.4		70.02
10	331	113.60	519.3		71.41
11	349	74.67	324.3		72.80
12	365	105.50	438.5		74.05
13	373	214.49	872.0		74.70
14	398	112.80	429.8		76.70
15	420	48.14	173.8		78.00
16	429	118.71	419.5		78.51
17	457	61.20	203.0		80.09
18	479	47.87	151.4		81.34
19	499	43.39	131.8		82.46
20	545	19.68	54.8		84.59
21	564	30.52	82.0		85.47
22	617	13.63	33.4		87.70
23	637	8.04	19.1		88.31
24	672	8.02	18.1		89.42
25	747	5.49	11.1		90.90



Assay Class: High Sensitivity DNA Assay  
 Data Path: C:\...ents and Settings\Bioanalyzer\2015-02-18\2015-02-18\_003.xad


Created: 2/18/2015 3:25:39 PM  
 Modified: 2/18/2015 4:06:11 PM

### Electropherogram Summary Continued ...

#### ... Peak table for sample 3 : JRIAL9-H (4B)

Peak	Size [bp]	Conc. [pg/μl]	Molarity [pmol/l]	Observations	Aligned Migration Time [s]
26	10,380	75.00	10.9	Upper Marker	113.00

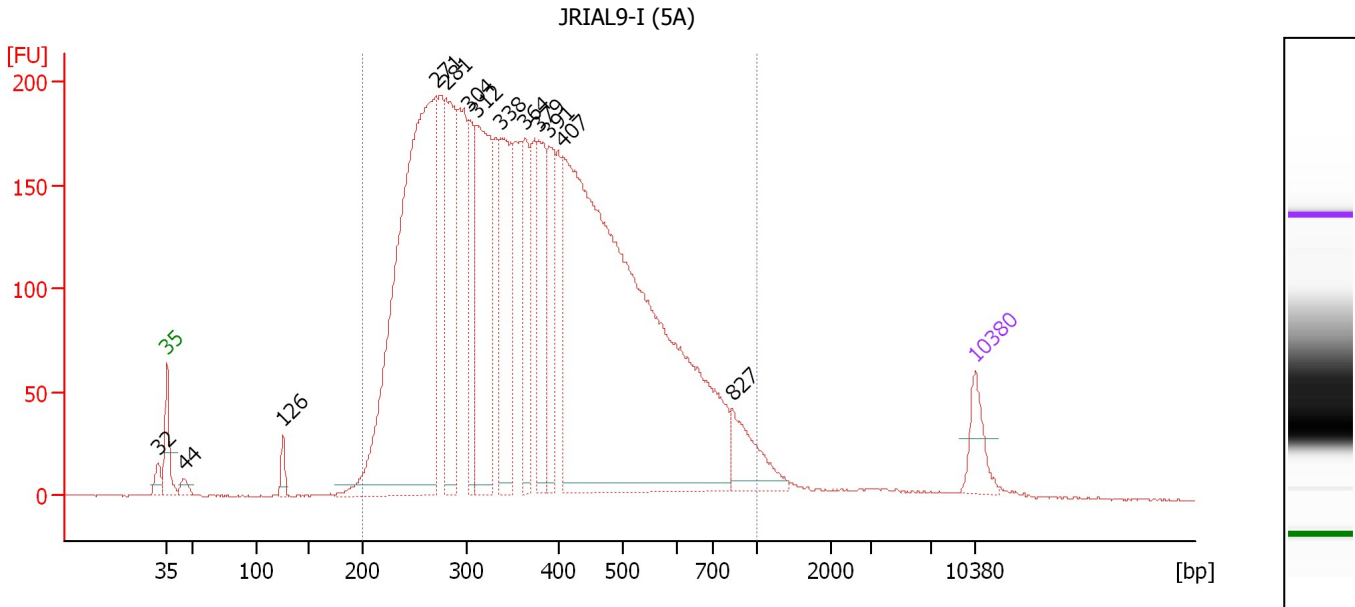
#### Region table for sample 3 : JRIAL9-H (4B)

From [bp]	Average Size [bp]	To [bp]	Corr. Area	% of Total	Size distribution in CV [%]	Conc. [pg/μl]	Molarity [pmol/l]	Color
166	337	729	2,152.1	94	29.9	3,427.57	17,205.3	

Assay Class: High Sensitivity DNA Assay  
 Data Path: C:\...ents and Settings\Bioanalyzer\2015-02-18\2015-02-18\_003.xad

Created: 2/18/2015 3:25:39 PM  
 Modified: 2/18/2015 4:06:11 PM

**Electropherogram Summary Continued ...**



**Overall Results for sample 4 : JRIAL9-I (5A)**

Number of peaks found: 13                      Corr. Area 1: 5,938.0  
 Noise: 0.4

**Peak table for sample 4 : JRIAL9-I (5A)**

Peak	Size [bp]	Conc. [pg/μl]	Molarity [pmol/l]	Observations	Aligned Migration Time [s]
1	32	0.00	0.0		42.19
2	35	125.00	5,411.3	Lower Marker	43.00
3	44	35.08	1,196.6		44.42
4	126	46.73	563.5		53.05
5	271	1,967.59	10,998.0		66.29
6	281	508.00	2,743.7		67.14
7	304	269.59	1,345.6		69.18
8	312	653.13	3,173.2		69.84
9	338	489.36	2,193.9		71.93
10	364	254.73	1,060.1		74.02
11	379	293.95	1,175.5		75.20
12	391	250.20	970.2		76.15
13	407	2,723.54	10,137.2		77.29
14	827	150.25	275.2		91.94
15	10,380	75.00	10.9	Upper Marker	113.00

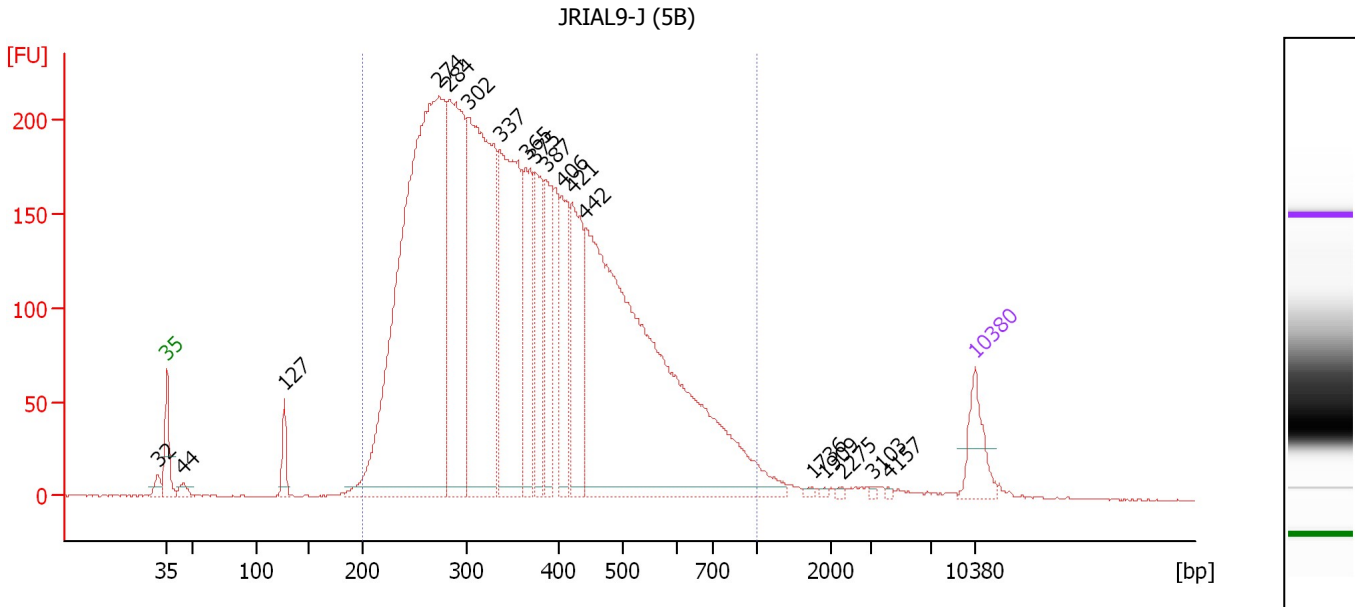
**Region table for sample 4 : JRIAL9-I (5A)**

From [bp]	Average Size [bp]	To [bp]	Corr. Area	% of Total	Size distribution in CV [%]	Conc. [pg/μl]	Molarity [pmol/l]	Color
200	394	1,000	5,938.0	97	35.4	9,097.97	40,502.2	Blue

Assay Class: High Sensitivity DNA Assay  
 Data Path: C:\...ents and Settings\Bioanalyzer\2015-02-18\2015-02-18\_003.xad

Created: 2/18/2015 3:25:39 PM  
 Modified: 2/18/2015 4:06:11 PM

**Electropherogram Summary Continued ...**



**Overall Results for sample 5 : JRIAL9-J (5B)**

Number of peaks found: 18                      Corr. Area 1: 5,971.7  
 Noise: 0.2

**Peak table for sample 5 : JRIAL9-J (5B)**

Peak	Size [bp]	Conc. [pg/μl]	Molarity [pmol/l]	Observations	Aligned Migration Time [s]
1	32	0.00	0.0		42.18
2	35	125.00	5,411.3	Lower Marker	43.00
3	44	24.55	841.0		44.39
4	127	65.55	784.8		53.14
5	274	2,070.92	11,455.8		66.54
6	284	724.98	3,867.5		67.45
7	302	1,032.55	5,173.2		69.09
8	337	693.63	3,121.6		71.83
9	365	285.37	1,184.9		74.08
10	375	219.63	887.1		74.90
11	387	208.67	816.7		75.86
12	406	215.35	804.4		77.21
13	421	281.07	1,011.6		78.07
14	442	1,726.35	5,914.4		79.27
15	1,736	4.81	4.2		98.88
16	1,909	3.97	3.1		99.98
17	2,275	4.11	2.7		101.52
18	3,103	3.36	1.6		104.16
19	4,157	2.80	1.0		105.51
20	10,380	75.00	10.9	Upper Marker	113.00

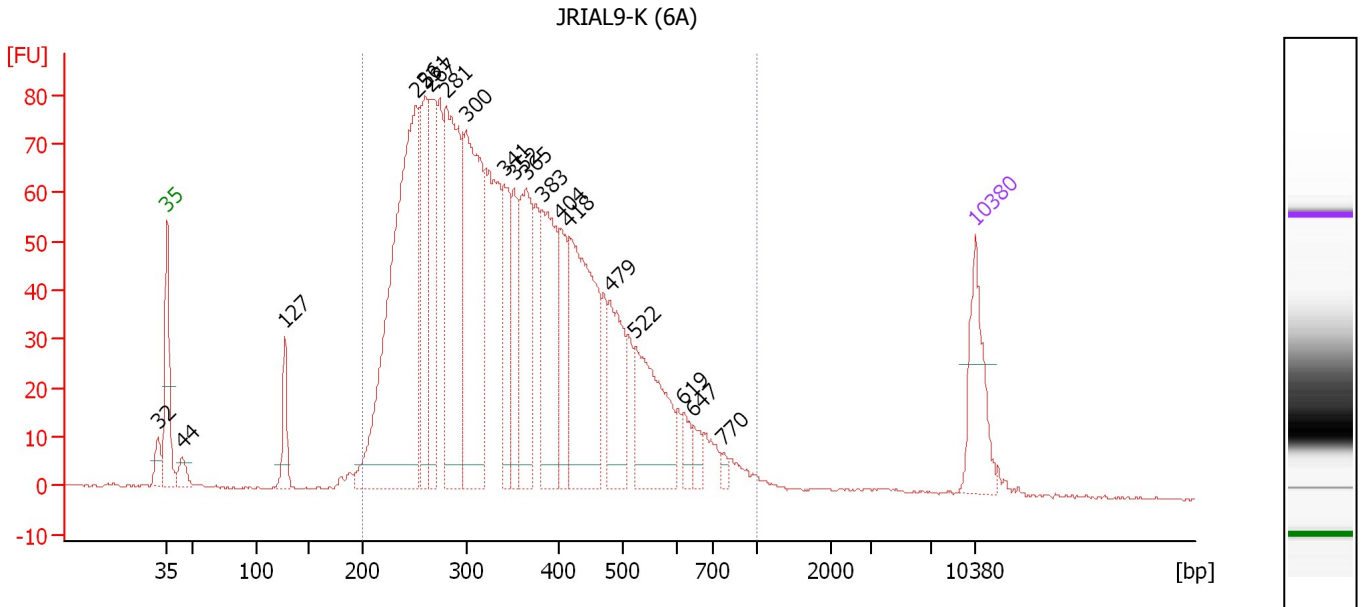
**Region table for sample 5 : JRIAL9-J (5B)**

From [bp]	Average Size [bp]	To [bp]	Corr. Area	% of Total	Size distribution in CV [%]	Conc. [pg/μl]	Molarity [pmol/l]	Color
200	384	1,000	5,971.7	96	34.2	7,523.44	33,997.4	Blue

Assay Class: High Sensitivity DNA Assay  
 Data Path: C:\...ents and Settings\Bioanalyzer\2015-02-18\2015-02-18\_003.xad

Created: 2/18/2015 3:25:39 PM  
 Modified: 2/18/2015 4:06:11 PM

**Electropherogram Summary Continued ...**



**Overall Results for sample 6 : JRIAL9-K (6A)**

Number of peaks found: 19      Corr. Area 1: 2,094.6  
 Noise: 0.2

**Peak table for sample 6 : JRIAL9-K (6A)**

Peak	Size [bp]	Conc. [pg/μl]	Molarity [pmol/l]	Observations	Aligned Migration Time [s]
1	32	0.00	0.0		42.22
2	35	125.00	5,411.3	Lower Marker	43.00
3	44	26.40	916.0		44.31
4	127	59.27	704.5		53.22
5	253	649.13	3,888.0		64.65
6	261	186.16	1,080.6		65.38
7	267	172.44	978.8		65.91
8	281	344.72	1,855.8		67.22
9	300	368.60	1,859.9		68.92
10	341	110.98	492.4		72.21
11	352	98.90	426.0		73.03
12	365	177.37	736.1		74.10
13	383	193.89	767.7		75.51
14	404	93.29	350.1		77.10
15	418	281.37	1,021.0		77.88
16	479	121.85	385.1		81.37
17	522	158.49	460.0		83.55
18	619	21.49	52.6		87.76
19	647	18.22	42.7		88.63
20	770	7.31	14.4		91.20
21	10,380	75.00	10.9	Upper Marker	113.00

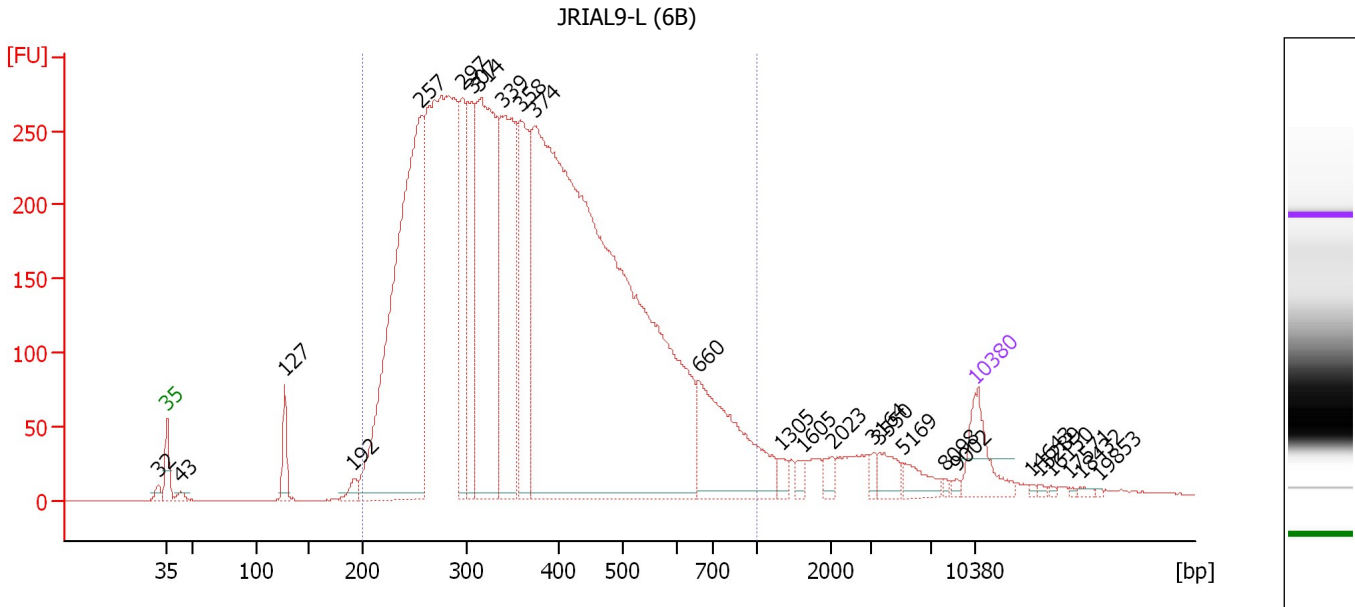
**Region table for sample 6 : JRIAL9-K (6A)**

From [bp]	Average Size [bp]	To [bp]	Corr. Area	% of Total	Size distribution in CV [%]	Conc. [pg/μl]	Molarity [pmol/l]	Color
200	365	1,000	2,094.6	96	32.9	3,675.11	17,247.7	Blue

Assay Class: High Sensitivity DNA Assay  
 Data Path: C:\...ents and Settings\Bioanalyzer\2015-02-18\2015-02-18\_003.xad

Created: 2/18/2015 3:25:39 PM  
 Modified: 2/18/2015 4:06:11 PM

**Electropherogram Summary Continued ...**



**Overall Results for sample 7 : JRIAL9-L (6B)**

Number of peaks found: 26                      Corr. Area 1: 8,234.5  
 Noise: 0.2

**Peak table for sample 7 : JRIAL9-L (6B)**

Peak	Size [bp]	Conc. [pg/μl]	Molarity [pmol/l]	Observations	Aligned Migration Time [s]
1	32	0.00	0.0		42.21
2	35	125.00	5,411.3	Lower Marker	43.00
3	43	14.70	516.3		44.23
4	127	69.90	833.1		53.19
5	192	23.32	184.0		59.15
6	257	1,196.97	7,045.9		65.05
7	297	242.38	1,237.7		68.60
8	307	271.56	1,341.3		69.43
9	314	720.05	3,479.7		69.98
10	339	514.26	2,295.8		72.04
11	358	301.53	1,274.5		73.57
12	374	2,748.59	11,120.7		74.85
13	660	311.34	715.2		89.03
14	1,305	16.58	19.3		96.12
15	1,605	14.10	13.3		98.04
16	2,023	18.96	14.2		100.64
17	3,164	11.50	5.5		104.24
18	3,550	35.98	15.4		104.73
19	5,169	34.61	10.1		106.80
20	8,098	4.89	0.9		110.39
21	9,002	5.80	1.0		111.42
22	10,380	75.00	10.9	Upper Marker	113.00
23	14,643	0.00	0.0		117.87
24	15,289	0.00	0.0		118.61
25	16,150	0.00	0.0		119.60


Assay Class: High Sensitivity DNA Assay  
Data Path: C:\...ents and Settings\Bioanalyzer\2015-02-18\2015-02-18\_003.xad

Created: 2/18/2015 3:25:39 PM  
Modified: 2/18/2015 4:06:11 PM

**Electropherogram Summary Continued ...****... Peak table for sample 7 : JRIAL9-L (6B)**

Peak	Size [bp]	Conc. [pg/ $\mu$ l]	Molarity [pmol/l]	Observations	Aligned Migration Time [s]
26	17,571	0.00	0.0		121.22
27	18,432	0.00	0.0		122.21
28	19,853	0.00	0.0		123.83

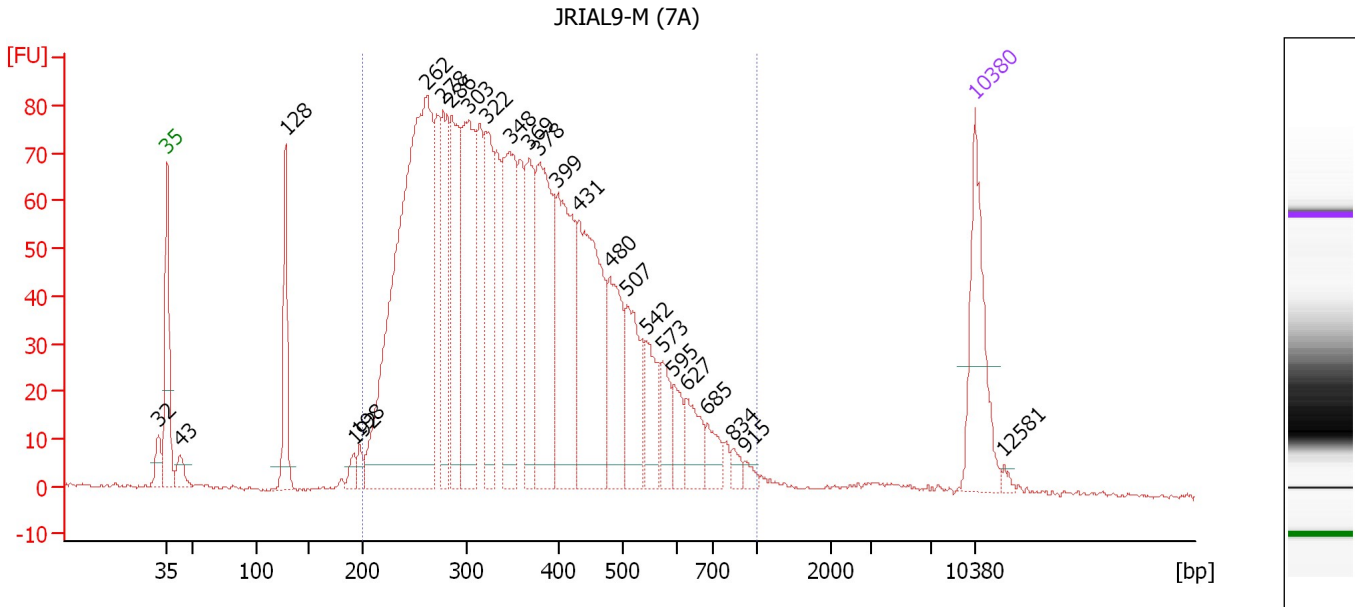
**Region table for sample 7 : JRIAL9-L (6B)**

From [bp]	Average Size [bp]	To [bp]	Corr. Area	% of Total	Size distribution in CV [%]	Conc. [pg/ $\mu$ l]	Molarity [pmol/l]	Color
200	389	1,000	8,234.5	93	35.1	7,274.30	32,652.3	

Assay Class: High Sensitivity DNA Assay  
 Data Path: C:\...ents and Settings\Bioanalyzer\2015-02-18\2015-02-18\_003.xad

Created: 2/18/2015 3:25:39 PM  
 Modified: 2/18/2015 4:06:11 PM

**Electropherogram Summary Continued ...**



**Overall Results for sample 8 : JRIAL9-M (7A)**

Number of peaks found: 25                      Corr. Area 1: 2,264.8  
 Noise: 0.5

**Peak table for sample 8 : JRIAL9-M (7A)**

Peak	Size [bp]	Conc. [pg/μl]	Molarity [pmol/l]	Observations	Aligned Migration Time [s]
1	32	0.00	0.0		42.26
2	35	125.00	5,411.3	Lower Marker	43.00
3	43	22.58	804.9		44.13
4	128	91.76	1,087.1		53.26
5	192	12.10	95.3		59.18
6	198	12.02	92.1		59.67
7	262	632.16	3,651.7		65.49
8	278	106.35	580.4		66.88
9	286	138.95	736.6		67.62
10	303	188.34	943.3		69.10
11	322	115.73	545.2		70.63
12	348	154.78	674.8		72.70
13	369	95.88	394.2		74.37
14	378	179.93	720.4		75.16
15	399	159.03	603.3		76.84
16	431	192.26	675.1		78.67
17	480	88.65	280.1		81.38
18	507	71.00	212.1		82.86
19	542	39.94	111.6		84.49
20	573	31.25	82.6		85.92
21	595	22.68	57.8		86.90
22	627	34.34	83.0		87.99
23	685	21.17	46.9		89.81
24	834	8.60	15.6		92.03
25	915	6.33	10.5		93.07

Assay Class: High Sensitivity DNA Assay  
 Data Path: C:\...ents and Settings\Bioanalyzer\2015-02-18\2015-02-18\_003.xad

Created: 2/18/2015 3:25:39 PM  
 Modified: 2/18/2015 4:06:11 PM

### Electropherogram Summary Continued ...

#### ... Peak table for sample 8 : JRIAL9-M (7A)

Peak	Size [bp]	Conc. [pg/μl]	Molarity [pmol/l]	Observations	Aligned Migration Time [s]
26	10,380	75.00	10.9	Upper Marker	113.00
27	12,581	0.00	0.0		115.52

#### Region table for sample 8 : JRIAL9-M (7A)

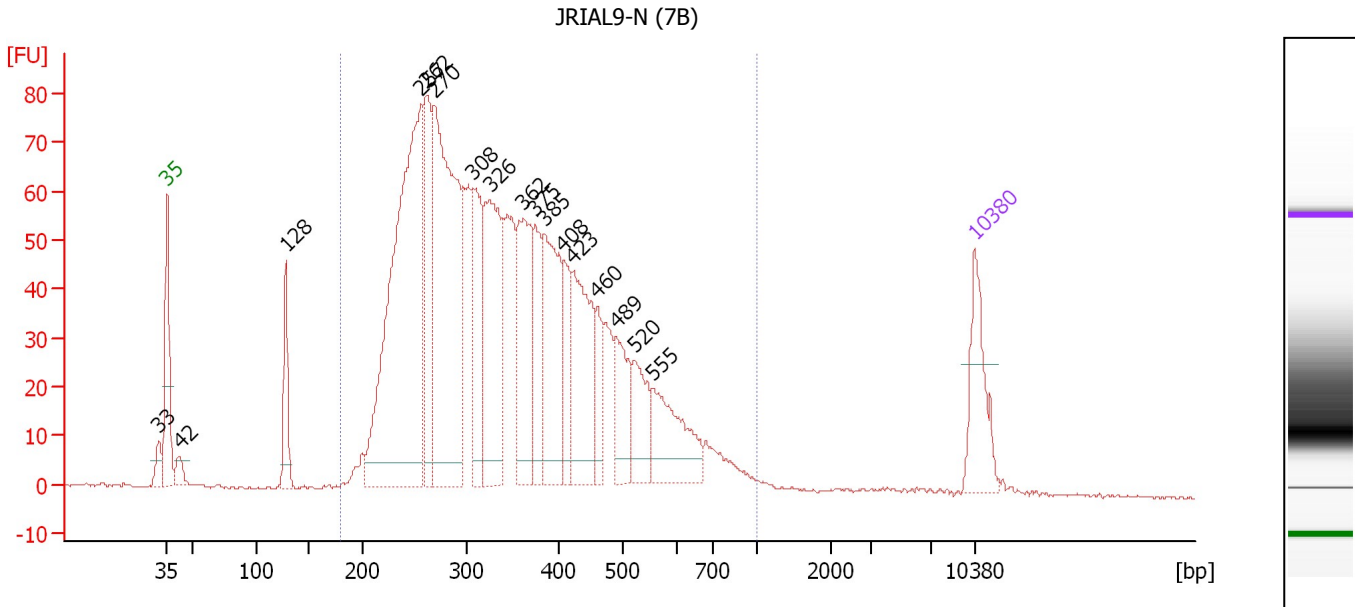
From [bp]	Average Size [bp]	To [bp]	Corr. Area	% of Total	Size distribution in CV [%]	Conc. [pg/μl]	Molarity [pmol/l]	Color
200	375	1,000	2,264.8	93	33.1	2,700.90	12,396.3	■



Assay Class: High Sensitivity DNA Assay  
 Data Path: C:\...ents and Settings\Bioanalyzer\2015-02-18\2015-02-18\_003.xad

Created: 2/18/2015 3:25:39 PM  
 Modified: 2/18/2015 4:06:11 PM

**Electropherogram Summary Continued ...**



**Overall Results for sample 9 : JRIAL9-N (7B)**

Number of peaks found: 17      Corr. Area 1: 1,887.3  
 Noise: 0.2

**Peak table for sample 9 : JRIAL9-N (7B)**

Peak	Size [bp]	Conc. [pg/μl]	Molarity [pmol/l]	Observations	Aligned Migration Time [s]
1	33	0.00	0.0		42.30
2	35	125.00	5,411.3	Lower Marker	43.00
3	42	26.82	962.3		44.09
4	128	83.91	992.7		53.28
5	257	712.56	4,196.4		65.04
6	262	179.19	1,037.5		65.44
7	270	522.74	2,934.1		66.18
8	308	144.94	712.2		69.56
9	326	237.25	1,103.6		70.95
10	362	185.08	773.9		73.88
11	375	90.34	365.3		74.87
12	385	192.72	759.0		75.67
13	408	68.21	253.2		77.35
14	423	179.55	642.8		78.20
15	460	47.02	154.8		80.28
16	489	81.18	251.4		81.92
17	520	72.67	211.7		83.46
18	555	116.42	318.1		85.05
19	10,380	75.00	10.9	Upper Marker	113.00

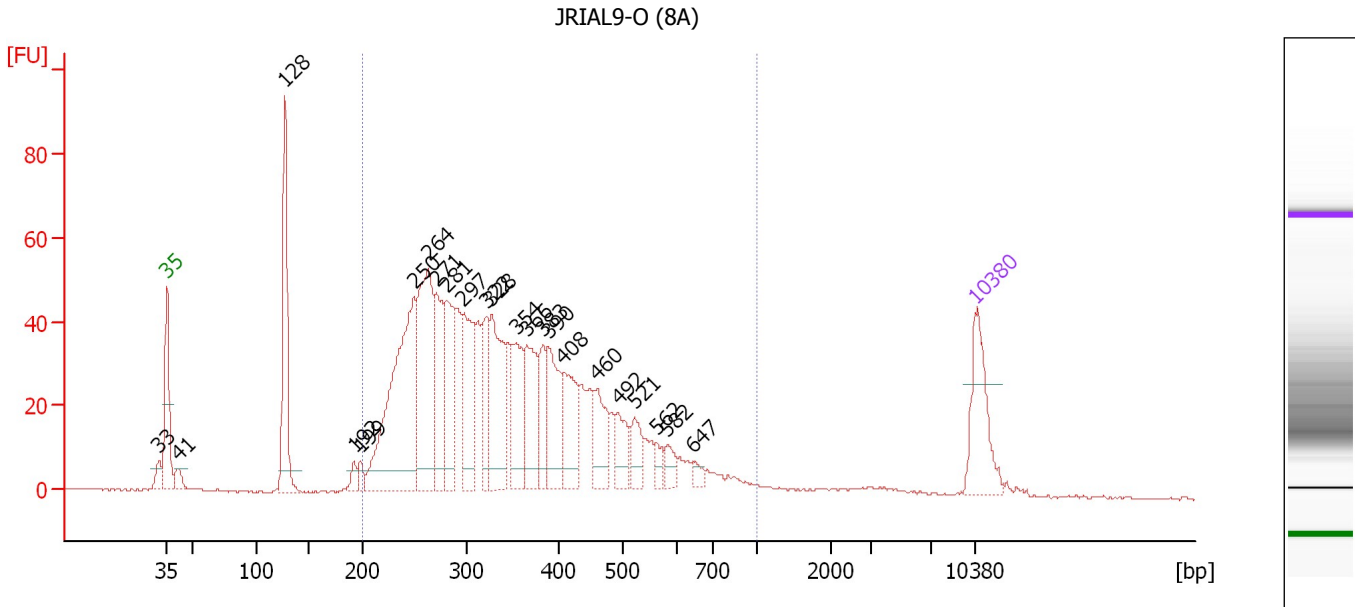
**Region table for sample 9 : JRIAL9-N (7B)**

From [bp]	Average Size [bp]	To [bp]	Corr. Area	% of Total	Size distribution in CV [%]	Conc. [pg/μl]	Molarity [pmol/l]	Color
179	362	1,000	1,887.3	95	33.1	3,407.51	16,178.3	Blue

Assay Class: High Sensitivity DNA Assay  
 Data Path: C:\...ents and Settings\Bioanalyzer\2015-02-18\2015-02-18\_003.xad

Created: 2/18/2015 3:25:39 PM  
 Modified: 2/18/2015 4:06:11 PM

**Electropherogram Summary Continued ...**



**Overall Results for sample 10 : JRIAL9-O (8A)**

Number of peaks found: 23                      Corr. Area 1: 1,191.1  
 Noise: 0.2

**Peak table for sample 10 : JRIAL9-O (8A)**

Peak	Size [bp]	Conc. [pg/μl]	Molarity [pmol/l]	Observations	Aligned Migration Time [s]
1	33	0.00	0.0		42.30
2	35	125.00	5,411.3	Lower Marker	43.00
3	41	22.81	837.1		43.95
4	128	195.66	2,323.0		53.24
5	192	16.50	129.9		59.18
6	199	14.16	107.8		59.78
7	250	368.07	2,232.4		64.37
8	264	244.81	1,406.9		65.62
9	271	114.75	640.6		66.32
10	281	129.14	696.7		67.17
11	297	126.08	642.3		68.66
12	322	73.36	345.1		70.66
13	328	148.52	686.7		71.11
14	354	92.48	395.9		73.21
15	366	99.65	412.1		74.21
16	383	56.19	222.1		75.55
17	390	93.84	365.0		76.05
18	408	88.18	327.3		77.35
19	460	64.98	214.2		80.25
20	492	42.48	130.7		82.09
21	521	37.04	107.8		83.49
22	562	13.74	37.1		85.39
23	582	19.56	50.9		86.34
24	647	11.27	26.4		88.63
25	10,380	75.00	10.9	Upper Marker	113.00

Assay Class: High Sensitivity DNA Assay  
Data Path: C:\...ents and Settings\Bioanalyzer\2015-02-18\2015-02-18\_003.xad

Created: 2/18/2015 3:25:39 PM  
Modified: 2/18/2015 4:06:11 PM

**Electropherogram Summary Continued ...**

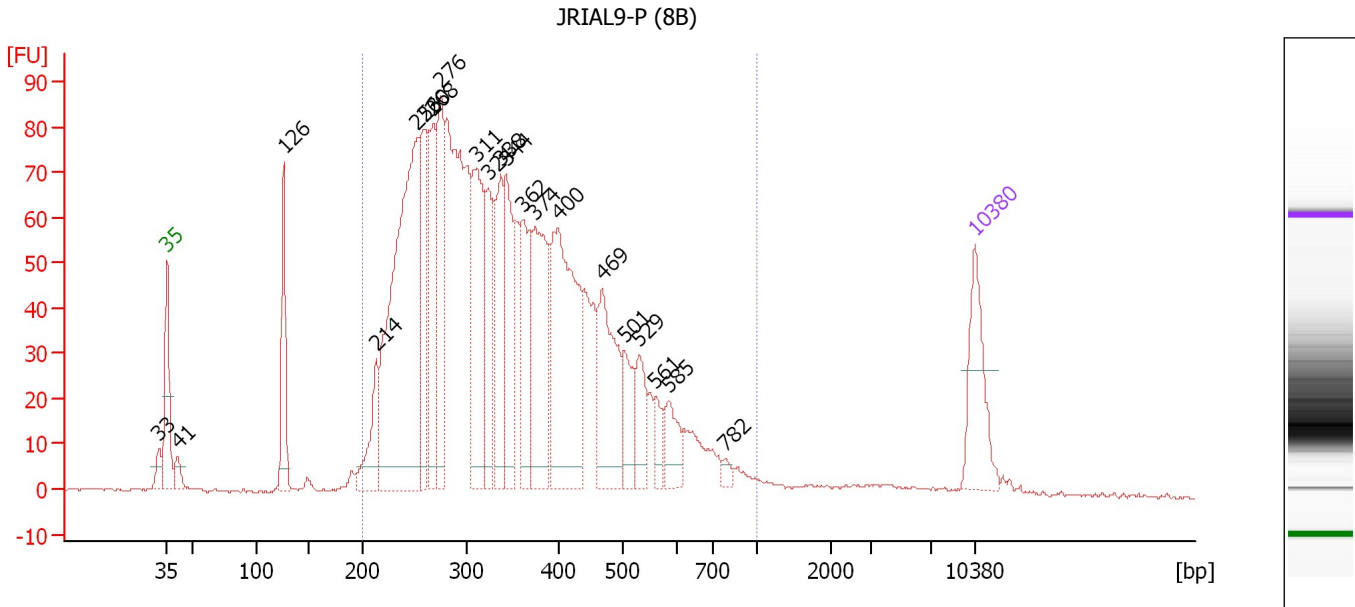
... Region table for sample 10 : JRIAL9-O (8A)

From [bp]	Average Size [bp]	To [bp]	Corr. Area	% of Total	Size distribution in CV [%]	Conc. [pg/μl]	Molarity [pmol/l]	Color
200	362	1,000	1,191.1	89	33.1	2,273.48	10,737.9	■

Assay Class: High Sensitivity DNA Assay  
 Data Path: C:\...ents and Settings\Bioanalyzer\2015-02-18\2015-02-18\_003.xad

Created: 2/18/2015 3:25:39 PM  
 Modified: 2/18/2015 4:06:11 PM

**Electropherogram Summary Continued ...**



**Overall Results for sample 11 : JRIAL9-P (8B)**

Number of peaks found: 21                      Corr. Area 1: 2,058.2  
 Noise: 0.3

**Peak table for sample 11 : JRIAL9-P (8B)**


Peak	Size [bp]	Conc. [pg/μl]	Molarity [pmol/l]	Observations	Aligned Migration Time [s]
1	33	0.00	0.0		42.30
2	35	125.00	5,411.3	Lower Marker	43.00
3	41	24.89	920.1		43.90
4	126	119.13	1,431.6		53.09
5	214	81.42	576.9		61.13
6	253	558.55	3,347.1		64.64
7	260	143.33	835.0		65.30
8	268	152.86	862.8		66.05
9	276	179.00	981.8		66.75
10	311	203.88	993.7		69.76
11	324	109.28	510.9		70.82
12	338	130.90	587.0		71.92
13	344	132.70	585.2		72.38
14	362	120.35	503.2		73.88
15	374	178.85	723.9		74.84
16	400	283.89	1,075.1		76.90
17	469	147.60	477.2		80.76
18	501	57.60	174.2		82.57
19	529	51.39	147.1		83.88
20	561	22.69	61.3		85.33
21	585	41.01	106.3		86.44
22	782	8.46	16.4		91.36
23	10,380	75.00	10.9	Upper Marker	113.00

Assay Class: High Sensitivity DNA Assay  
Data Path: C:\...ents and Settings\Bioanalyzer\2015-02-18\2015-02-18\_003.xad

Created: 2/18/2015 3:25:39 PM  
Modified: 2/18/2015 4:06:11 PM

**Electropherogram Summary Continued ...**

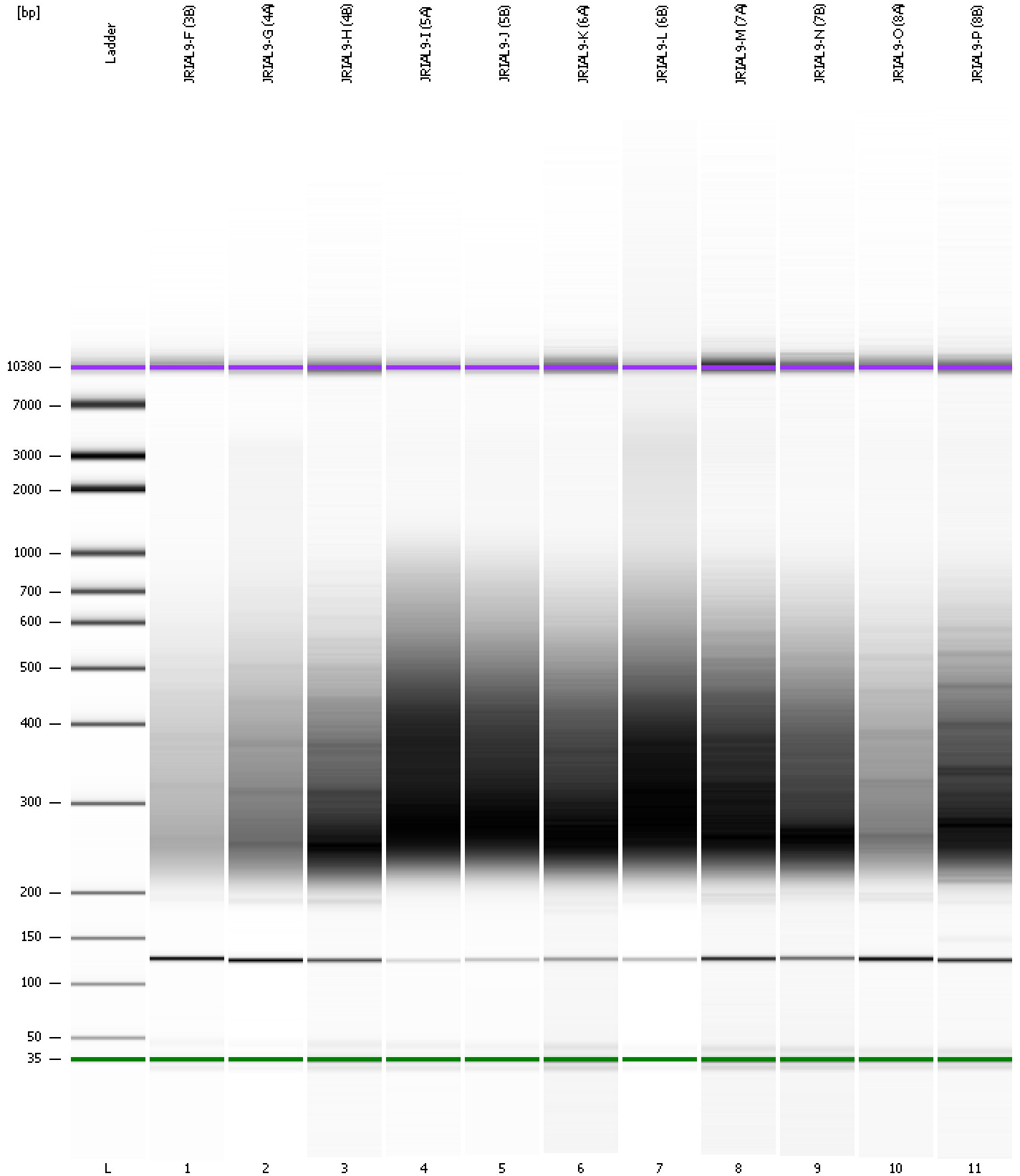
... Region table for sample 11 : JRIAL9-P (8B)

From [bp]	Average Size [bp]	To [bp]	Corr. Area	% of Total	Size distribution in CV [%]	Conc. [pg/ $\mu$ l]	Molarity [pmol/l]	Color
200	362	1,000	2,058.2	93	32.8	3,400.20	16,042.5	

Assay Class: High Sensitivity DNA Assay  
Data Path: C:\...ents and Settings\Bioanalyzer\2015-02-18\2015-02-18\_003.xad

Created: 2/18/2015 3:25:39 PM  
Modified: 2/18/2015 4:06:11 PM

**Gel Image**



Assay Class: High Sensitivity DNA Assay  
 Data Path: C:\...ents and Settings\Bioanalyzer\2015-02-18\2015-02-18\_003.xad

Created: 2/18/2015 3:25:39 PM  
 Modified: 2/18/2015 4:06:11 PM

**Run Logbook**

Description	Number	Source	Category	Sub Category	Time	Time Zone	User	Host
Run ended on port 1 (Number of wells acquired: 12)		Instrument	Run		2/18/2015 4:06:08 PM	(GMT --08:00) Pacific Standard Time	UC Davis	D8XSMGH1
Run started on port 1 (File: C:\Documents and Settings\Bioanalyzer\2015-02-18\2015-02-18_003.xad)		Instrument	Run		2/18/2015 3:25:44 PM	(GMT --08:00) Pacific Standard Time	UC Davis	D8XSMGH1
Product Number : G2938B		Instrument	Run		2/18/2015 3:25:44 PM	(GMT --08:00) Pacific Standard Time	UC Davis	D8XSMGH1
Name :		Instrument	Run		2/18/2015 3:25:44 PM	(GMT --08:00) Pacific Standard Time	UC Davis	D8XSMGH1
Vendor : Agilent Technologies		Instrument	Run		2/18/2015 3:25:44 PM	(GMT --08:00) Pacific Standard Time	UC Davis	D8XSMGH1
Serial# : DE13701086		Instrument	Run		2/18/2015 3:25:44 PM	(GMT --08:00) Pacific Standard Time	UC Davis	D8XSMGH1
Firmware : C.01.069		Instrument	Run		2/18/2015 3:25:44 PM	(GMT --08:00) Pacific Standard Time	UC Davis	D8XSMGH1
Cartridge : Electrode		Instrument	Run		2/18/2015 3:25:44 PM	(GMT --08:00) Pacific Standard Time	UC Davis	D8XSMGH1