

Assay Class: High Sensitivity DNA Assay  
Data Path: C:\...ents and Settings\Bioanalyzer\2015-02-27\2015-02-27\_001.xad

Created: 2/27/2015 7:26:24 AM  
Modified: 2/27/2015 8:18:13 AM

**Electrophoresis File Run Summary**

Instrument Information:

Instrument Name: DE13701086      Firmware: C.01.069  
Serial#: DE13701086      Type: G2938B

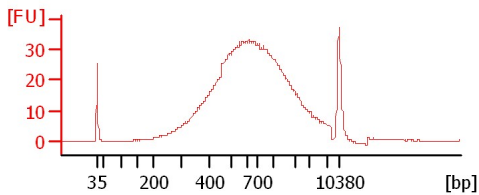
Assay Information:

Assay Origin Path: C:\Program Files\Agilent\2100 bioanalyzer\2100 expert\assays\dsDNA\High Sensitivity DNA.xsy  
Assay Class: High Sensitivity DNA Assay  
Version: 1.03  
Assay Comments: Copyright © 2003-2010 Agilent Technologies

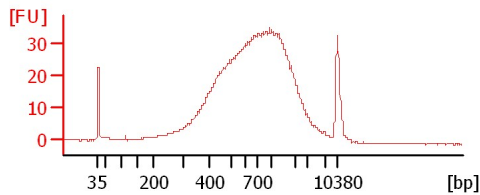
Chip Information:

Chip Lot #:  
Reagent Kit Lot #:  
Chip Comments:

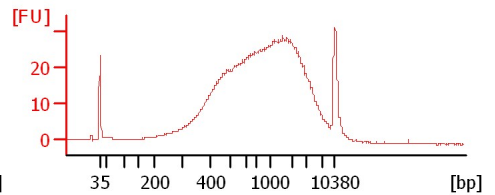
**CV soni 0.6X cleanup (1:3)**



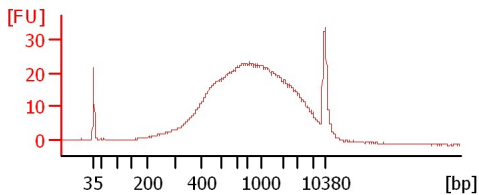
**MI soni 0.6X cleanup (1:2)**



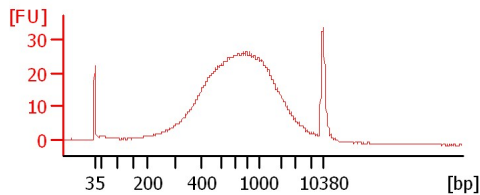
**SJ soni 0.6X cleanup (1:2)**



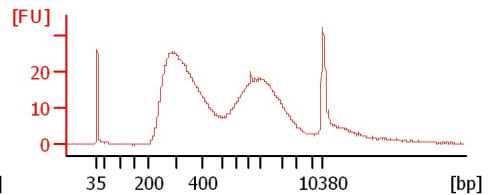
**RR soni 0.6X cleanup (1:4)**



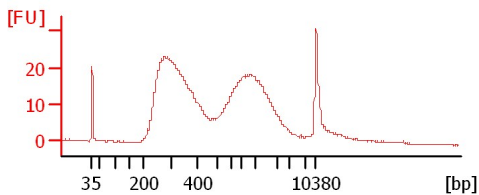
**FT soni 0.6X cleanup (1:2)**



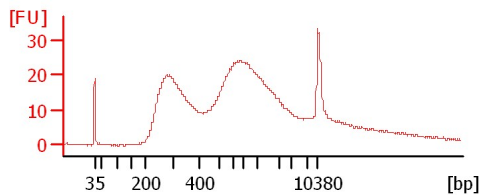
**1 (1:26)**



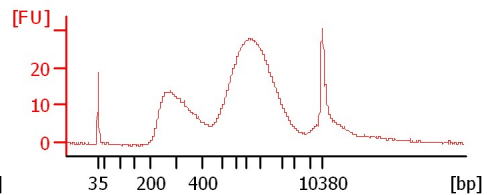
**2 (1:26)**



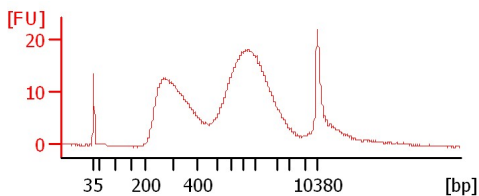
**23 (1:15)**



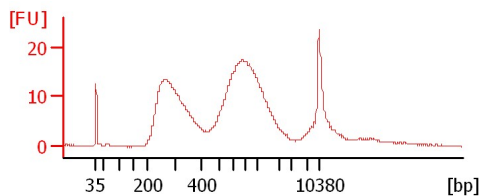
**32 (1:20)**



**33 (1:29)**



**37 (1:27)**



Assay Class: High Sensitivity DNA Assay  
Data Path: C:\...ents and Settings\Bioanalyzer\2015-02-27\2015-02-27\_001.xad

Created: 2/27/2015 7:26:24 AM  
Modified: 2/27/2015 8:18:13 AM

**Electrophoresis File Run Summary (Chip Summary)**

Sample Name	Sample Comment	Rest. Digest	Status	Observation	Result Label	Result Color
CV soni 0.6X cleanup (1:3)		<input type="checkbox"/>	✓			
MI soni 0.6X cleanup (1:2)		<input type="checkbox"/>	✓			
SJ soni 0.6X cleanup (1:2)		<input type="checkbox"/>	✓			
RR soni 0.6X cleanup (1:4)		<input type="checkbox"/>	✓			
FT soni 0.6X cleanup (1:2)		<input type="checkbox"/>	✓			
1 (1:26)		<input type="checkbox"/>	✓			
2 (1:26)		<input type="checkbox"/>	✓			
23 (1:15)		<input type="checkbox"/>	✓			
32 (1:20)		<input type="checkbox"/>	✓			
33 (1:29)		<input type="checkbox"/>	✓			
37 (1:27)		<input type="checkbox"/>	✓			
Ladder		<input type="checkbox"/>	✓			

**Chip Lot #**

**Reagent Kit Lot #**

**Chip Comments :**

Assay Class: High Sensitivity DNA Assay  
Data Path: C:\...ents and Settings\Bioanalyzer\2015-02-27\2015-02-27\_001.xad

Created: 2/27/2015 7:26:24 AM  
Modified: 2/27/2015 8:18:13 AM

**Electrophoresis Assay Details**

**General Analysis Settings**

Number of Available Sample and Ladder Wells (Max.) : 12  
Minimum Visible Range [s] : 32  
Maximum Visible Range [s] : 138  
Start Analysis Time Range [s] : 33  
End Analysis Time Range [s] : 137.5  
Ladder Concentration [pg/μl] : 1950  
Uses Standard Area for Ladder Fragments  
Lower Marker Concentration [pg/μl] : 125  
Upper Marker Concentration [pg/μl] : 75  
Used Upper Marker for Quantitation  
Standard Curve Fit is Point to Point  
Show Data Aligned to Lower and Upper Marker

**Integrator Settings**

Integration Start Time [s] : 33.05  
Integration End Time [s] : 137  
Slope Threshold : 0.8  
Height Threshold [FU] : 5  
Area Threshold : 0.1  
Width Threshold [s] : 0.6  
Baseline Plateau [s] : 0.5

**Filter Settings**

Filter Width [s] : 0.5  
Polynomial Order : 4

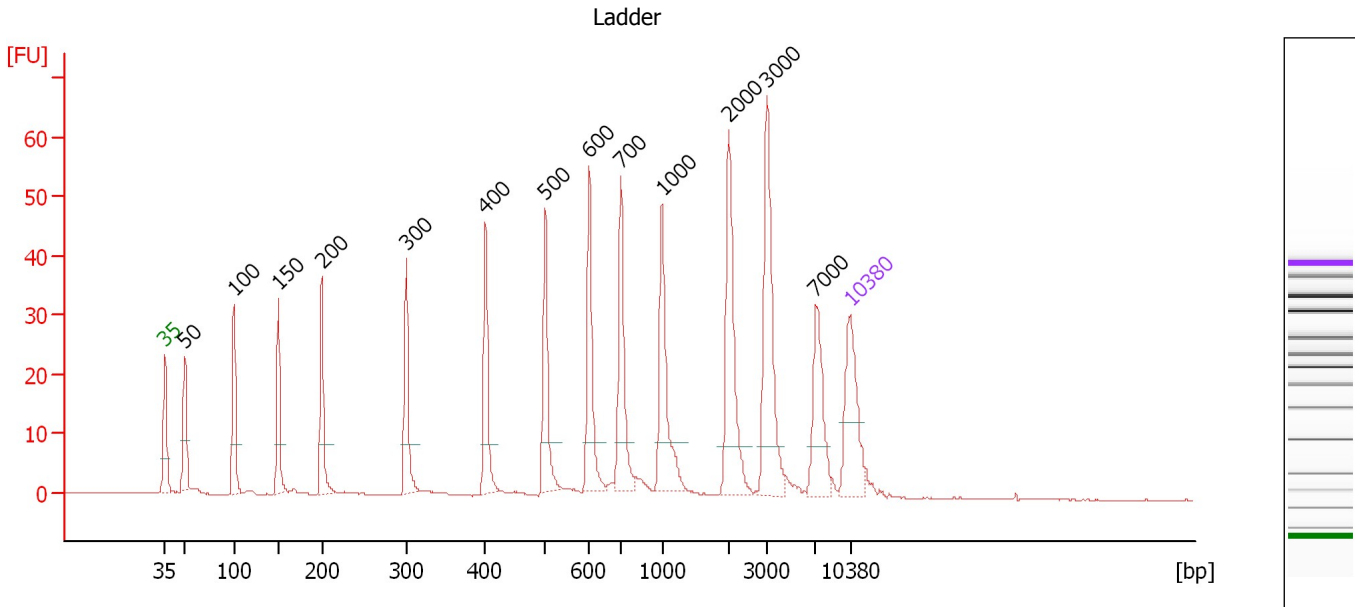
**Ladder**

Ladder Peak	Size	Area
1	35	160
2	50	210
3	100	208
4	150	221
5	200	242
6	300	270
7	400	305
8	500	306
9	600	336
10	700	321
11	1000	366
12	2000	413
13	3000	411
14	7000	400
15	10380	214

Assay Class: High Sensitivity DNA Assay  
 Data Path: C:\...ents and Settings\Bioanalyzer\2015-02-27\2015-02-27\_001.xad

Created: 2/27/2015 7:26:24 AM  
 Modified: 2/27/2015 8:18:13 AM

**Electropherogram Summary**



**Overall Results for Ladder**

Noise: 0.1

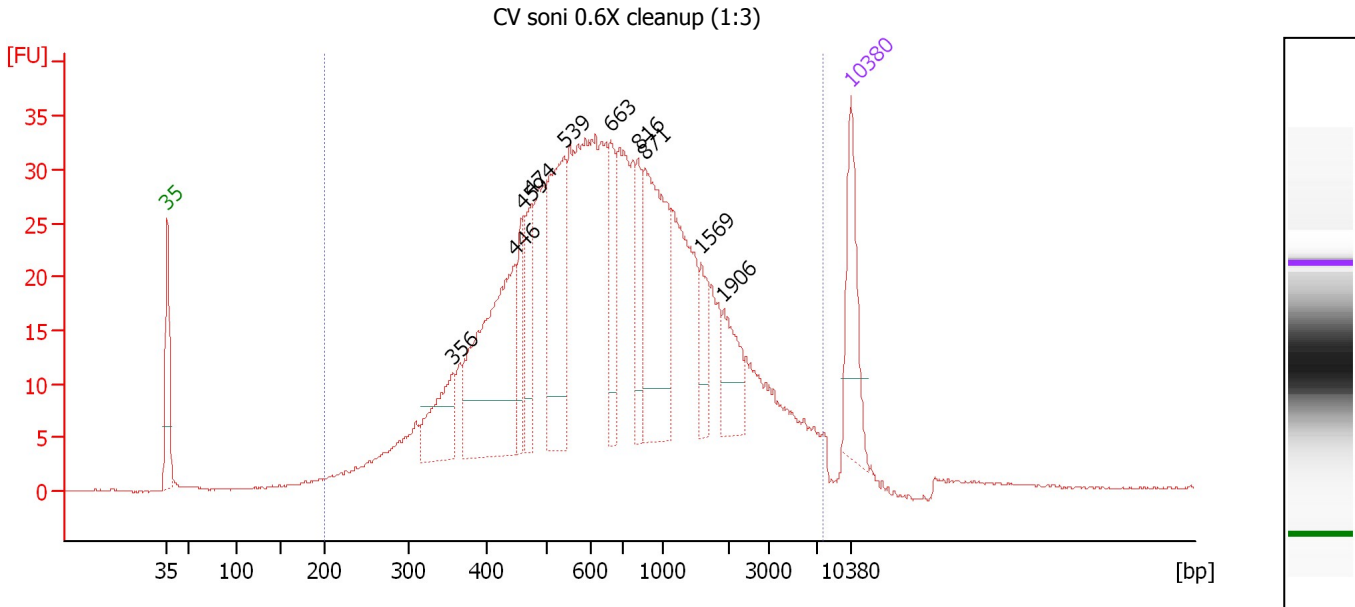
**Peak table for Ladder**

Peak	Size [bp]	Conc. [pg/μl]	Molarity [pmol/l]	Observations	Aligned Migration Time [s]
1	35	125.00	5,411.3	Lower Marker	43.00
2	50	150.00	4,545.5	Ladder Peak	45.07
3	100	150.00	2,272.7	Ladder Peak	50.08
4	150	150.00	1,515.2	Ladder Peak	54.59
5	200	150.00	1,136.4	Ladder Peak	59.06
6	300	150.00	757.6	Ladder Peak	67.66
7	400	150.00	568.2	Ladder Peak	75.77
8	500	150.00	454.5	Ladder Peak	81.86
9	600	150.00	378.8	Ladder Peak	86.33
10	700	150.00	324.7	Ladder Peak	89.59
11	1,000	150.00	227.3	Ladder Peak	93.79
12	2,000	150.00	113.6	Ladder Peak	100.59
13	3,000	150.00	75.8	Ladder Peak	104.51
14	7,000	150.00	32.5	Ladder Peak	109.46
15	10,380	75.00	10.9	Upper Marker	113.00

Assay Class: High Sensitivity DNA Assay  
 Data Path: C:\...ents and Settings\Bioanalyzer\2015-02-27\2015-02-27\_001.xad

Created: 2/27/2015 7:26:24 AM  
 Modified: 2/27/2015 8:18:13 AM

**Electropherogram Summary Continued ...**



**Overall Results for sample 1 : CV soni 0.6X cleanup (1:3)**

Number of peaks found: 10                      Corr. Area 1: 945.3  
 Noise: 0.1

**Peak table for sample 1 : CV soni 0.6X cleanup (1:3)**

Peak	Size [bp]	Conc. [pg/μl]	Molarity [pmol/l]	Observations	Aligned Migration Time [s]
1	35	125.00	5,411.3	Lower Marker	43.00
2	356	84.67	360.2		72.21
3	446	267.34	909.1		78.55
4	459	52.51	173.3		79.37
5	474	74.96	239.5		80.29
6	539	184.33	517.8		83.62
7	663	64.72	148.0		88.37
8	816	52.48	97.4		91.21
9	871	184.93	321.8		91.98
10	1,569	38.11	36.8		97.66
11	1,906	47.71	37.9		99.95
12	10,380	75.00	10.9	Upper Marker	113.00

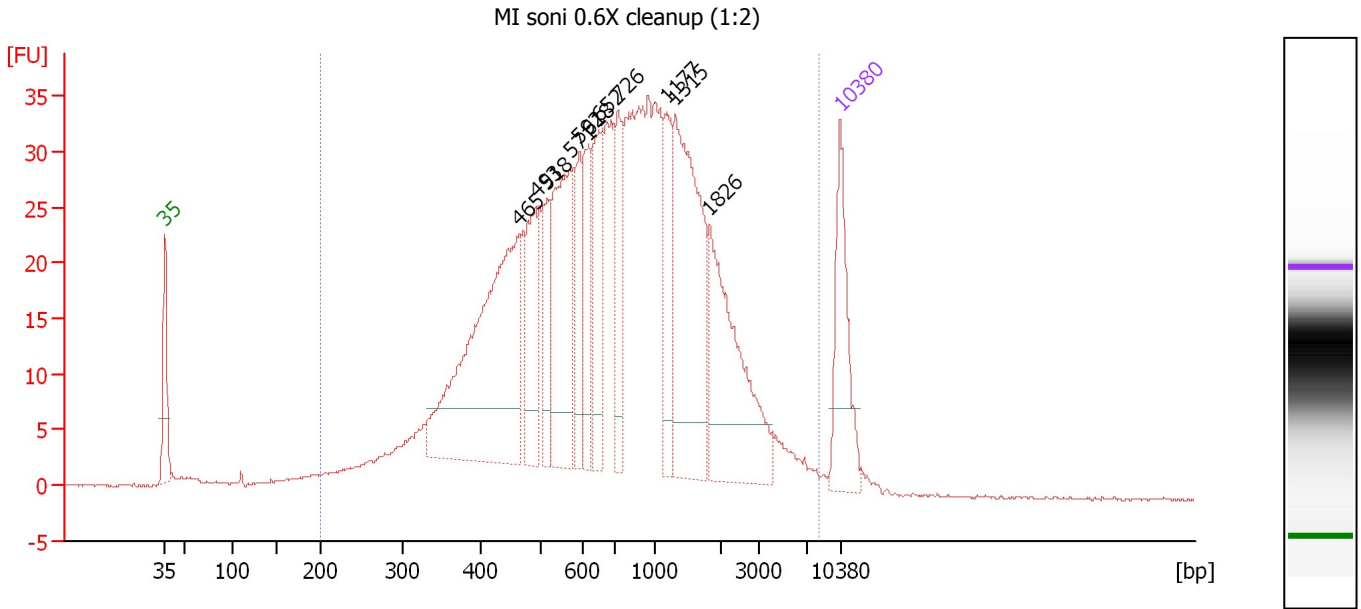
**Region table for sample 1 : CV soni 0.6X cleanup (1:3)**

From [bp]	Average Size [bp]	To [bp]	Corr. Area	% of Total	Size distribution in CV [%]	Conc. [pg/μl]	Molarity [pmol/l]	Color
200	1,032	7,677	945.3	98	100.0	2,584.93	6,807.7	Blue

Assay Class: High Sensitivity DNA Assay  
 Data Path: C:\...ents and Settings\Bioanalyzer\2015-02-27\2015-02-27\_001.xad

Created: 2/27/2015 7:26:24 AM  
 Modified: 2/27/2015 8:18:13 AM

**Electropherogram Summary Continued ...**



**Overall Results for sample 2 : MI soni 0.6X cleanup (1:2)**

Number of peaks found: 11                      Corr. Area 1: 961.1  
 Noise: 0.1

**Peak table for sample 2 : MI soni 0.6X cleanup (1:2)**

Peak	Size [bp]	Conc. [pg/μl]	Molarity [pmol/l]	Observations	Aligned Migration Time [s]
1	35	125.00	5,411.3	Lower Marker	43.00
2	465	351.64	1,145.4		79.74
3	493	85.14	261.5		81.45
4	518	53.71	157.1		82.67
5	571	161.43	428.2		85.04
6	592	52.60	134.6		85.98
7	618	57.84	141.8		86.92
8	652	82.44	191.6		88.03
9	726	67.95	141.7		89.96
10	1,177	60.84	78.3		94.99
11	1,315	211.79	244.0		95.93
12	1,826	155.57	129.1		99.41
13	10,380	75.00	10.9	Upper Marker	113.00

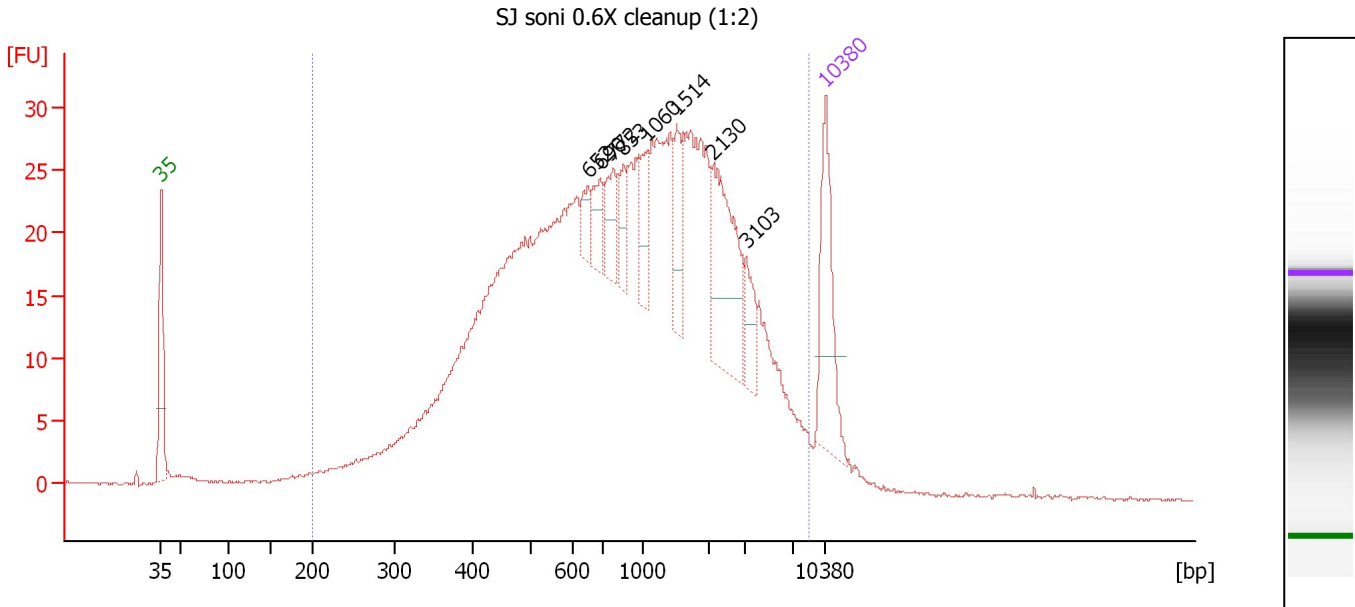
**Region table for sample 2 : MI soni 0.6X cleanup (1:2)**

From [bp]	Average Size [bp]	To [bp]	Corr. Area	% of Total	Size distribution in CV [%]	Conc. [pg/μl]	Molarity [pmol/l]	Color
200	1,029	8,258	961.1	98	90.8	2,236.70	5,578.0	Blue

Assay Class: High Sensitivity DNA Assay  
 Data Path: C:\...ents and Settings\Bioanalyzer\2015-02-27\2015-02-27\_001.xad

Created: 2/27/2015 7:26:24 AM  
 Modified: 2/27/2015 8:18:13 AM

**Electropherogram Summary Continued ...**



**Overall Results for sample 3 : SJ soni 0.6X cleanup (1:2)**

Number of peaks found: 8                      Corr. Area 1: 882.6  
 Noise: 0.1

**Peak table for sample 3 : SJ soni 0.6X cleanup (1:2)**

Peak	Size [bp]	Conc. [pg/μl]	Molarity [pmol/l]	Observations	Aligned Migration Time [s]
1	35	125.00	5,411.3	Lower Marker	43.00
2	652	18.38	42.7		88.02
3	690	26.75	58.8		89.26
4	772	29.93	58.7		90.60
5	853	24.66	43.8		91.72
6	1,060	28.77	41.1		94.19
7	1,514	38.77	38.8		97.28
8	2,130	99.97	71.1		101.10
9	3,103	25.39	12.4		104.64
10	10,380	75.00	10.9	Upper Marker	113.00

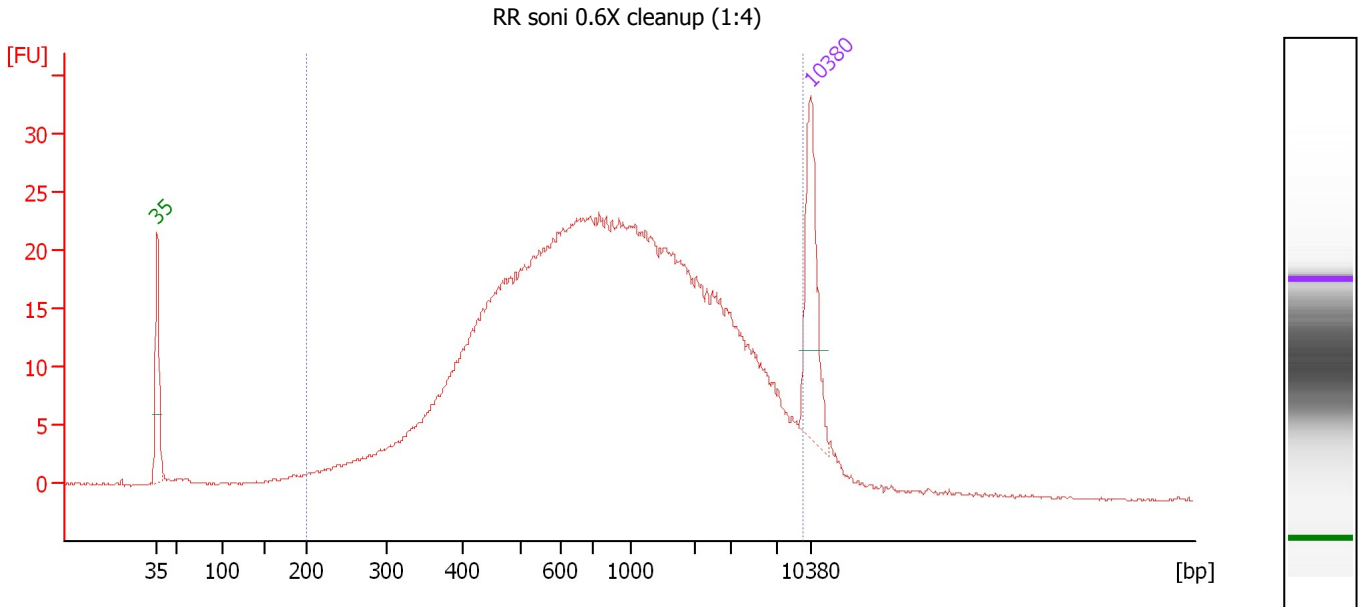
**Region table for sample 3 : SJ soni 0.6X cleanup (1:2)**

From [bp]	Average Size [bp]	To [bp]	Corr. Area	% of Total	Size distribution in CV [%]	Conc. [pg/μl]	Molarity [pmol/l]	Color
200	1,392	8,612	882.6	97	99.4	2,433.17	5,605.6	Blue

Assay Class: High Sensitivity DNA Assay  
 Data Path: C:\...ents and Settings\Bioanalyzer\2015-02-27\2015-02-27\_001.xad

Created: 2/27/2015 7:26:24 AM  
 Modified: 2/27/2015 8:18:13 AM

**Electropherogram Summary Continued ...**



**Overall Results for sample 4 : RR soni 0.6X cleanup (1:4)**

Number of peaks found: 0                      Corr. Area 1: 772.6  
 Noise: 0.1

**Peak table for sample 4 : RR soni 0.6X cleanup (1:4)**

Peak	Size [bp]	Conc. [pg/μl]	Molarity [pmol/l]	Observations	Aligned Migration Time [s]
1	35	125.00	5,411.3	Lower Marker	43.00
2	10,380	75.00	10.9	Upper Marker	113.00

**Region table for sample 4 : RR soni 0.6X cleanup (1:4)**

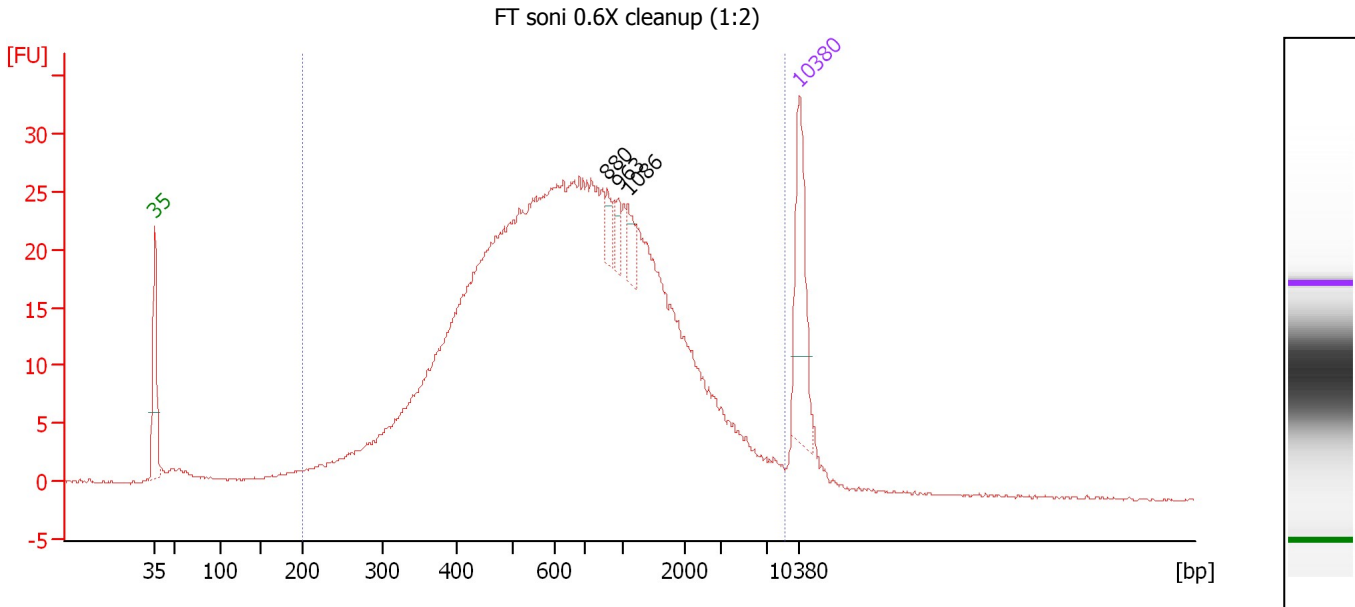
From [bp]	Average Size [bp]	To [bp]	Corr. Area	% of Total	Size distribution in CV [%]	Conc. [pg/μl]	Molarity [pmol/l]	Color
200	1,470	9,546	772.6	97	100.0	2,010.82	4,806.3	Blue



Assay Class: High Sensitivity DNA Assay  
 Data Path: C:\...ents and Settings\Bioanalyzer\2015-02-27\2015-02-27\_001.xad

Created: 2/27/2015 7:26:24 AM  
 Modified: 2/27/2015 8:18:13 AM

**Electropherogram Summary Continued ...**



**Overall Results for sample 5 : FT soni 0.6X cleanup (1:2)**

Number of peaks found: 3                      Corr. Area 1: 795.1  
 Noise: 0.1

**Peak table for sample 5 : FT soni 0.6X cleanup (1:2)**

Peak	Size [bp]	Conc. [pg/μl]	Molarity [pmol/l]	Observations	Aligned Migration Time [s]
1	35	125.00	5,411.3	Lower Marker	43.00
2	880	14.92	25.7		92.12
3	963	12.80	20.1		93.27
4	1,086	16.85	23.5		94.37
5	10,380	75.00	10.9	Upper Marker	113.00

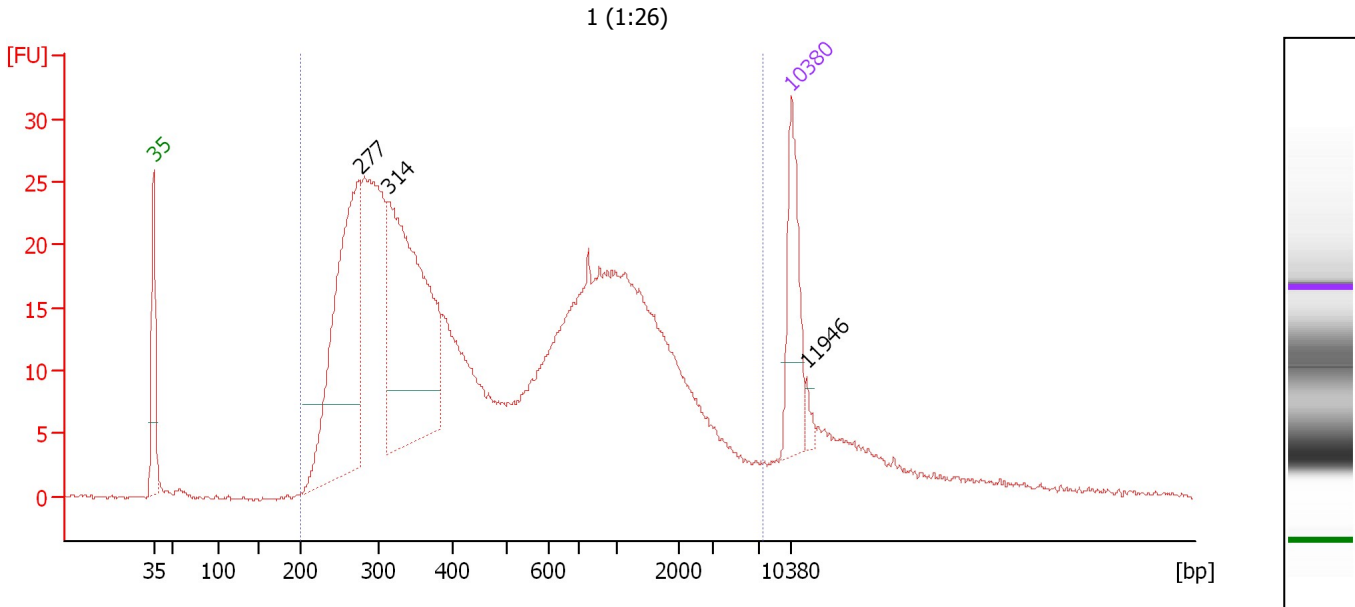
**Region table for sample 5 : FT soni 0.6X cleanup (1:2)**

From [bp]	Average Size [bp]	To [bp]	Corr. Area	% of Total	Size distribution in CV [%]	Conc. [pg/μl]	Molarity [pmol/l]	Color
200	1,012	8,765	795.1	96	100.0	2,361.39	6,283.8	Blue

Assay Class: High Sensitivity DNA Assay  
 Data Path: C:\...ents and Settings\Bioanalyzer\2015-02-27\2015-02-27\_001.xad

Created: 2/27/2015 7:26:24 AM  
 Modified: 2/27/2015 8:18:13 AM

**Electropherogram Summary Continued ...**



**Overall Results for sample 6 : 1 (1:26)**

Number of peaks found: 3                      Corr. Area 1: 773.2  
 Noise: 0.1

**Peak table for sample 6 : 1 (1:26)**

Peak	Size [bp]	Conc. [pg/μl]	Molarity [pmol/l]	Observations	Aligned Migration Time [s]
1	35	125.00	5,411.3	Lower Marker	43.00
2	277	370.66	2,030.0		65.65
3	314	401.67	1,936.8		68.81
4	10,380	75.00	10.9	Upper Marker	113.00
5	11,946	0.00	0.0		114.64

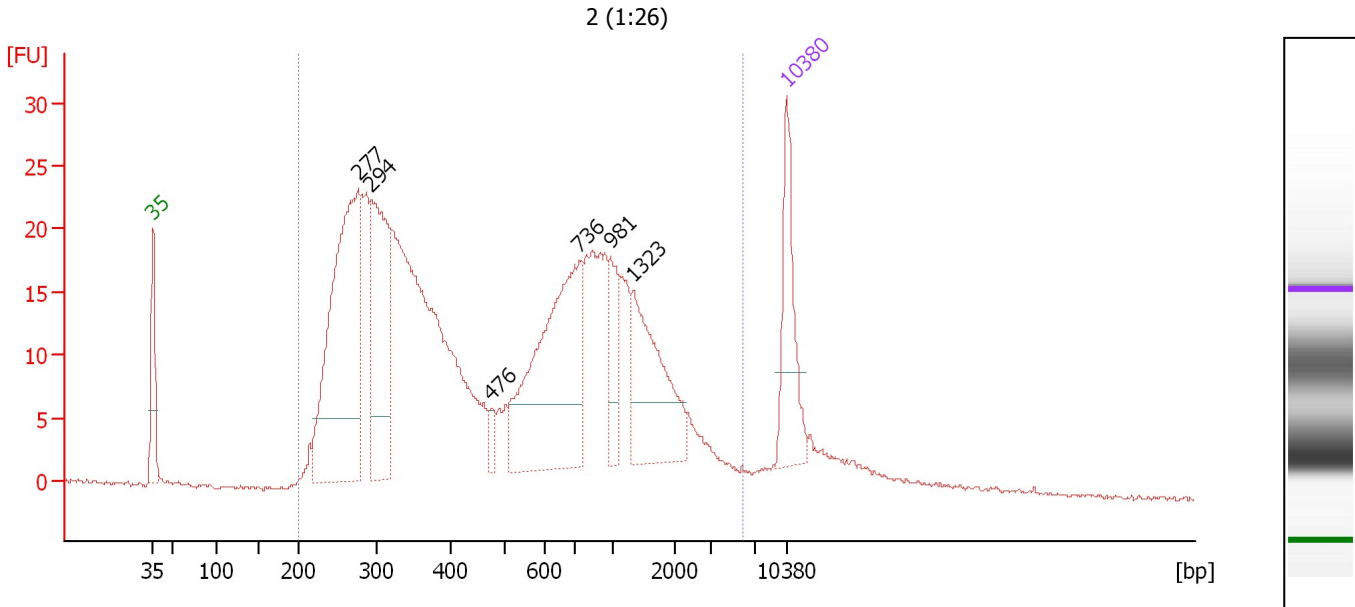
**Region table for sample 6 : 1 (1:26)**

From [bp]	Average Size [bp]	To [bp]	Corr. Area	% of Total	Size distribution in CV [%]	Conc. [pg/μl]	Molarity [pmol/l]	Color
200	829	7,427	773.2	93	100.0	2,346.64	8,736.4	Blue

Assay Class: High Sensitivity DNA Assay  
 Data Path: C:\...ents and Settings\Bioanalyzer\2015-02-27\2015-02-27\_001.xad

Created: 2/27/2015 7:26:24 AM  
 Modified: 2/27/2015 8:18:13 AM

**Electropherogram Summary Continued ...**



**Overall Results for sample 7 : 2 (1:26)**

Number of peaks found: 6                      Corr. Area 1: 713.3  
 Noise: 0.2

**Peak table for sample 7 : 2 (1:26)**

Peak	Size [bp]	Conc. [pg/μl]	Molarity [pmol/l]	Observations	Aligned Migration Time [s]
1	35	125.00	5,411.3	Lower Marker	43.00
2	277	423.51	2,317.8		65.67
3	294	220.47	1,136.4		67.14
4	476	13.66	43.5		80.38
5	736	268.36	552.4		90.10
6	981	48.22	74.5		93.51
7	1,323	126.04	144.3		95.99
8	10,380	75.00	10.9	Upper Marker	113.00

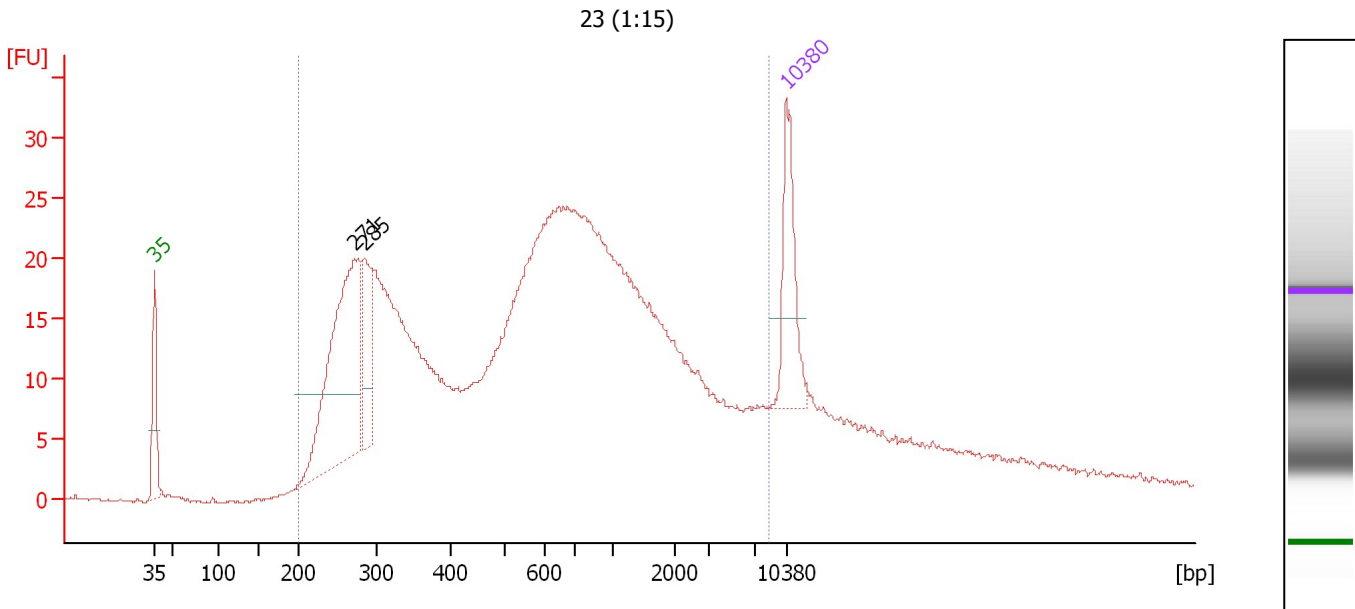
**Region table for sample 7 : 2 (1:26)**

From [bp]	Average Size [bp]	To [bp]	Corr. Area	% of Total	Size distribution in CV [%]	Conc. [pg/μl]	Molarity [pmol/l]	Color
200	734	5,845	713.3	95	92.5	2,154.78	8,115.7	Blue

Assay Class: High Sensitivity DNA Assay  
 Data Path: C:\...ents and Settings\Bioanalyzer\2015-02-27\2015-02-27\_001.xad

Created: 2/27/2015 7:26:24 AM  
 Modified: 2/27/2015 8:18:13 AM

**Electropherogram Summary Continued ...**



**Overall Results for sample 8 : 23 (1:15)**

Number of peaks found: 2                      Corr. Area 1: 814.3  
 Noise: 0.2

**Peak table for sample 8 : 23 (1:15)**

Peak	Size [bp]	Conc. [pg/μl]	Molarity [pmol/l]	Observations	Aligned Migration Time [s]
1	35	125.00	5,411.3	Lower Marker	43.00
2	271	332.73	1,861.2		65.15
3	285	90.32	480.9		66.33
4	10,380	75.00	10.9	Upper Marker	113.00

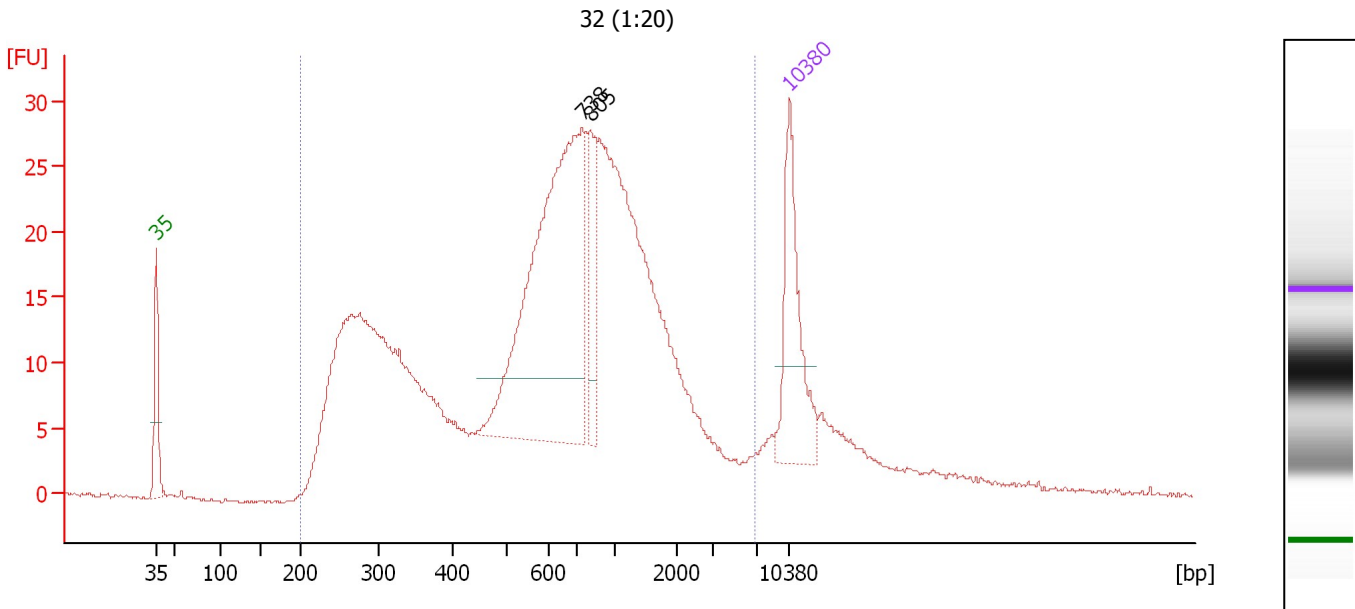
**Region table for sample 8 : 23 (1:15)**

From [bp]	Average Size [bp]	To [bp]	Corr. Area	% of Total	Size distribution in CV [%]	Conc. [pg/μl]	Molarity [pmol/l]	Color
200	1,080	8,546	814.3	91	100.0	2,575.94	8,560.1	Blue

Assay Class: High Sensitivity DNA Assay  
 Data Path: C:\...ents and Settings\Bioanalyzer\2015-02-27\2015-02-27\_001.xad

Created: 2/27/2015 7:26:24 AM  
 Modified: 2/27/2015 8:18:13 AM

**Electropherogram Summary Continued ...**



**Overall Results for sample 9 : 32 (1:20)**

Number of peaks found: 2                      Corr. Area 1: 691.3  
 Noise: 0.1

**Peak table for sample 9 : 32 (1:20)**

Peak	Size [bp]	Conc. [pg/μl]	Molarity [pmol/l]	Observations	Aligned Migration Time [s]
1	35	125.00	5,411.3	Lower Marker	43.00
2	738	350.29	719.6		90.12
3	805	50.12	94.3		91.06
4	10,380	75.00	10.9	Upper Marker	113.00

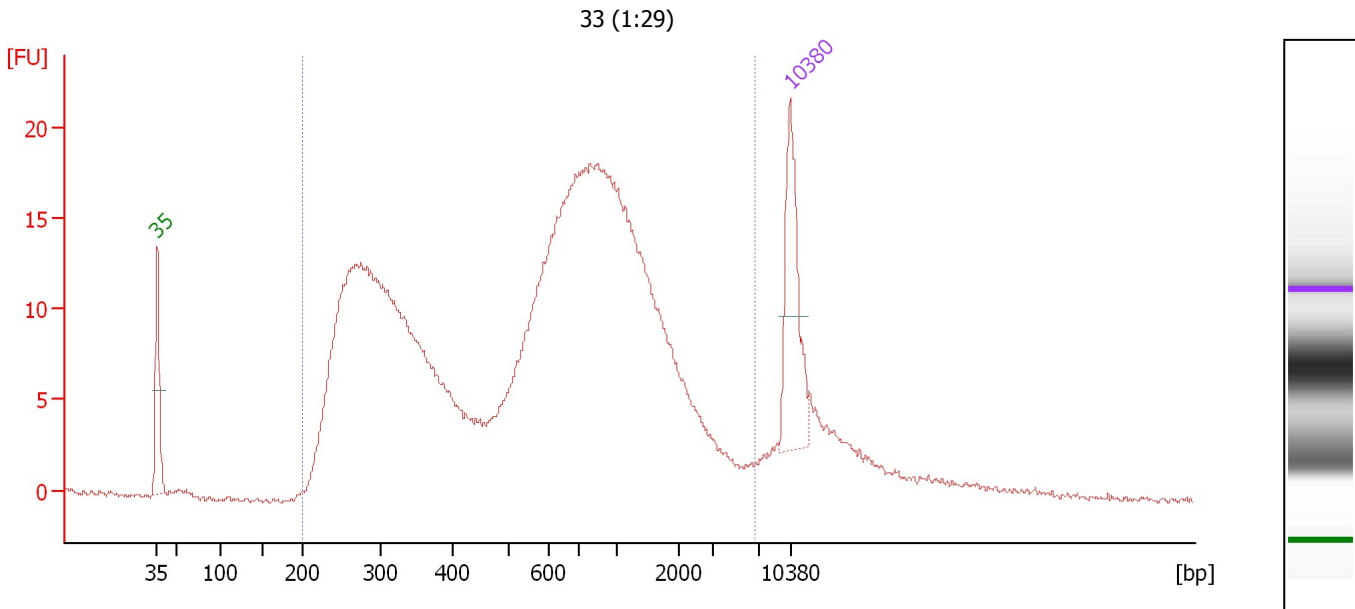
**Region table for sample 9 : 32 (1:20)**

From [bp]	Average Size [bp]	To [bp]	Corr. Area	% of Total	Size distribution in CV [%]	Conc. [pg/μl]	Molarity [pmol/l]	Color
200	891	6,725	691.3	93	89.3	1,562.45	4,870.6	Blue

Assay Class: High Sensitivity DNA Assay  
 Data Path: C:\...ents and Settings\Bioanalyzer\2015-02-27\2015-02-27\_001.xad

Created: 2/27/2015 7:26:24 AM  
 Modified: 2/27/2015 8:18:13 AM

**Electropherogram Summary Continued ...**



**Overall Results for sample 10 : 33 (1:29)**

Number of peaks found: 0                      Corr. Area 1: 513.5  
 Noise: 0.2

**Peak table for sample 10 : 33 (1:29)**

Peak	Size [bp]	Conc. [pg/μl]	Molarity [pmol/l]	Observations	Aligned Migration Time [s]
1	35	125.00	5,411.3	Lower Marker	43.00
2	10,380	75.00	10.9	Upper Marker	113.00

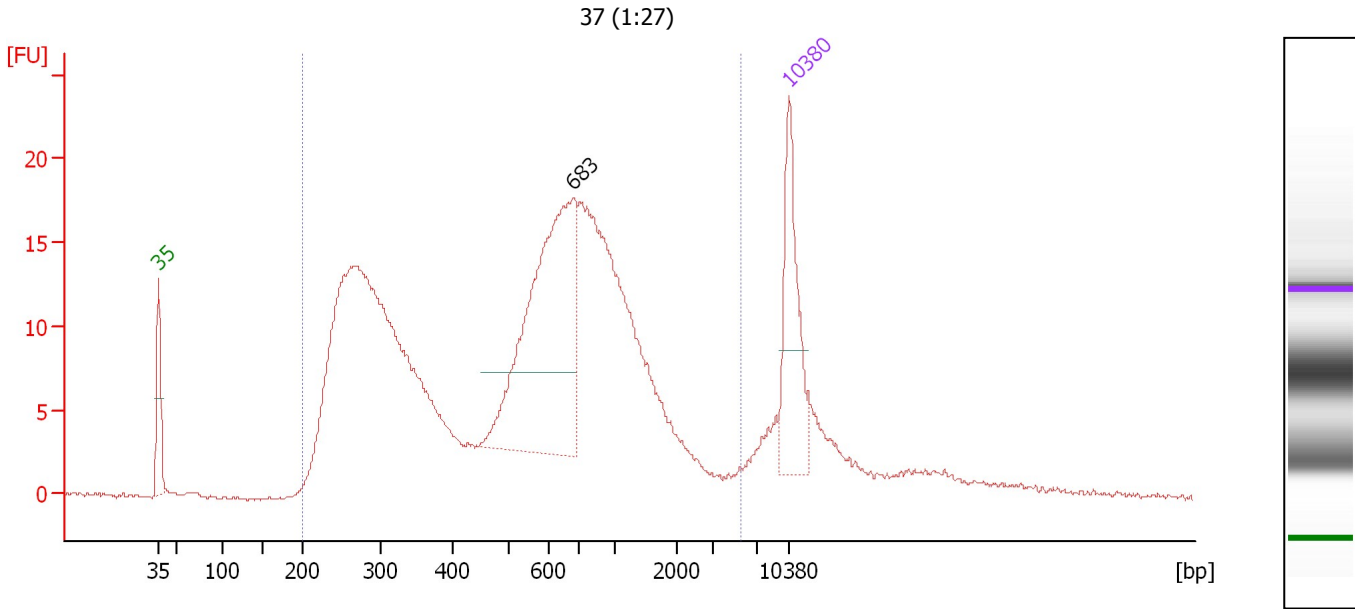
**Region table for sample 10 : 33 (1:29)**

From [bp]	Average Size [bp]	To [bp]	Corr. Area	% of Total	Size distribution in CV [%]	Conc. [pg/μl]	Molarity [pmol/l]	Color
200	852	6,630	513.5	93	92.0	1,995.07	6,700.4	Blue

Assay Class: High Sensitivity DNA Assay  
 Data Path: C:\...ents and Settings\Bioanalyzer\2015-02-27\2015-02-27\_001.xad

Created: 2/27/2015 7:26:24 AM  
 Modified: 2/27/2015 8:18:13 AM

**Electropherogram Summary Continued ...**



**Overall Results for sample 11 : 37 (1:27)**

Number of peaks found: 1                      Corr. Area 1: 466.1  
 Noise: 0.1

**Peak table for sample 11 : 37 (1:27)**

Peak	Size [bp]	Conc. [pg/μl]	Molarity [pmol/l]	Observations	Aligned Migration Time [s]
1	35	125.00	5,411.3	Lower Marker	43.00
2	683	284.03	629.6		89.05
3	10,380	75.00	10.9	Upper Marker	113.00

**Region table for sample 11 : 37 (1:27)**

From [bp]	Average Size [bp]	To [bp]	Corr. Area	% of Total	Size distribution in CV [%]	Conc. [pg/μl]	Molarity [pmol/l]	Color
200	711	5,674	466.1	91	83.0	1,473.53	5,317.8	Blue

Assay Class: High Sensitivity DNA Assay  
Data Path: C:\...ents and Settings\Bioanalyzer\2015-02-27\2015-02-27\_001.xad

Created: 2/27/2015 7:26:24 AM  
Modified: 2/27/2015 8:18:13 AM

**Gel Image**



Assay Class: High Sensitivity DNA Assay  
 Data Path: C:\...ents and Settings\Bioanalyzer\2015-02-27\2015-02-27\_001.xad

Created: 2/27/2015 7:26:24 AM  
 Modified: 2/27/2015 8:18:13 AM

**Run Logbook**

Description	Number	Source	Category	Sub Category	Time	Time Zone	User	Host
Run ended on port 1 (Number of wells acquired: 12)		Instrument	Run		2/27/2015 8:07:41 AM	(GMT --08:00) Pacific Standard Time	UC Davis	D8XSMGH1
Run started on port 1 (File: C:\Documents and Settings\Bioanalyzer\2015-02-27\2015-02-27_001.xad)		Instrument	Run		2/27/2015 7:26:30 AM	(GMT --08:00) Pacific Standard Time	UC Davis	D8XSMGH1
Product Number : G2938B		Instrument	Run		2/27/2015 7:26:30 AM	(GMT --08:00) Pacific Standard Time	UC Davis	D8XSMGH1
Name :		Instrument	Run		2/27/2015 7:26:30 AM	(GMT --08:00) Pacific Standard Time	UC Davis	D8XSMGH1
Vendor : Agilent Technologies		Instrument	Run		2/27/2015 7:26:30 AM	(GMT --08:00) Pacific Standard Time	UC Davis	D8XSMGH1
Serial# : DE13701086		Instrument	Run		2/27/2015 7:26:30 AM	(GMT --08:00) Pacific Standard Time	UC Davis	D8XSMGH1
Firmware : C.01.069		Instrument	Run		2/27/2015 7:26:30 AM	(GMT --08:00) Pacific Standard Time	UC Davis	D8XSMGH1
Cartridge : Electrode		Instrument	Run		2/27/2015 7:26:30 AM	(GMT --08:00) Pacific Standard Time	UC Davis	D8XSMGH1