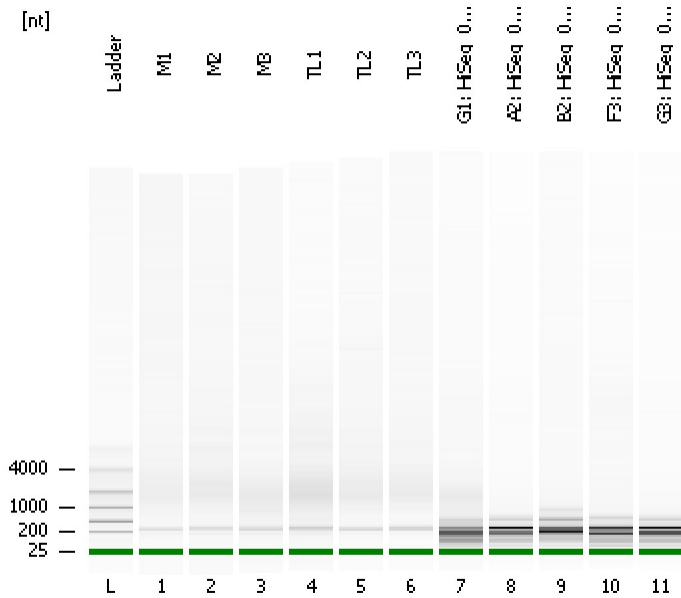


Assay Class: mRNA Pico
Data Path: C:\...ents and Settings\Bioanalyzer\2015-03-12\2015-03-12_003.xad

Created: 3/12/2015 6:07:25 PM
Modified: 3/13/2015 5:13:59 PM

Electrophoresis File Run Summary



Instrument Information:

Instrument Name: DE13701086 Firmware: C.01.069
Serial#: DE13701086 Type: G2938B

Assay Information:

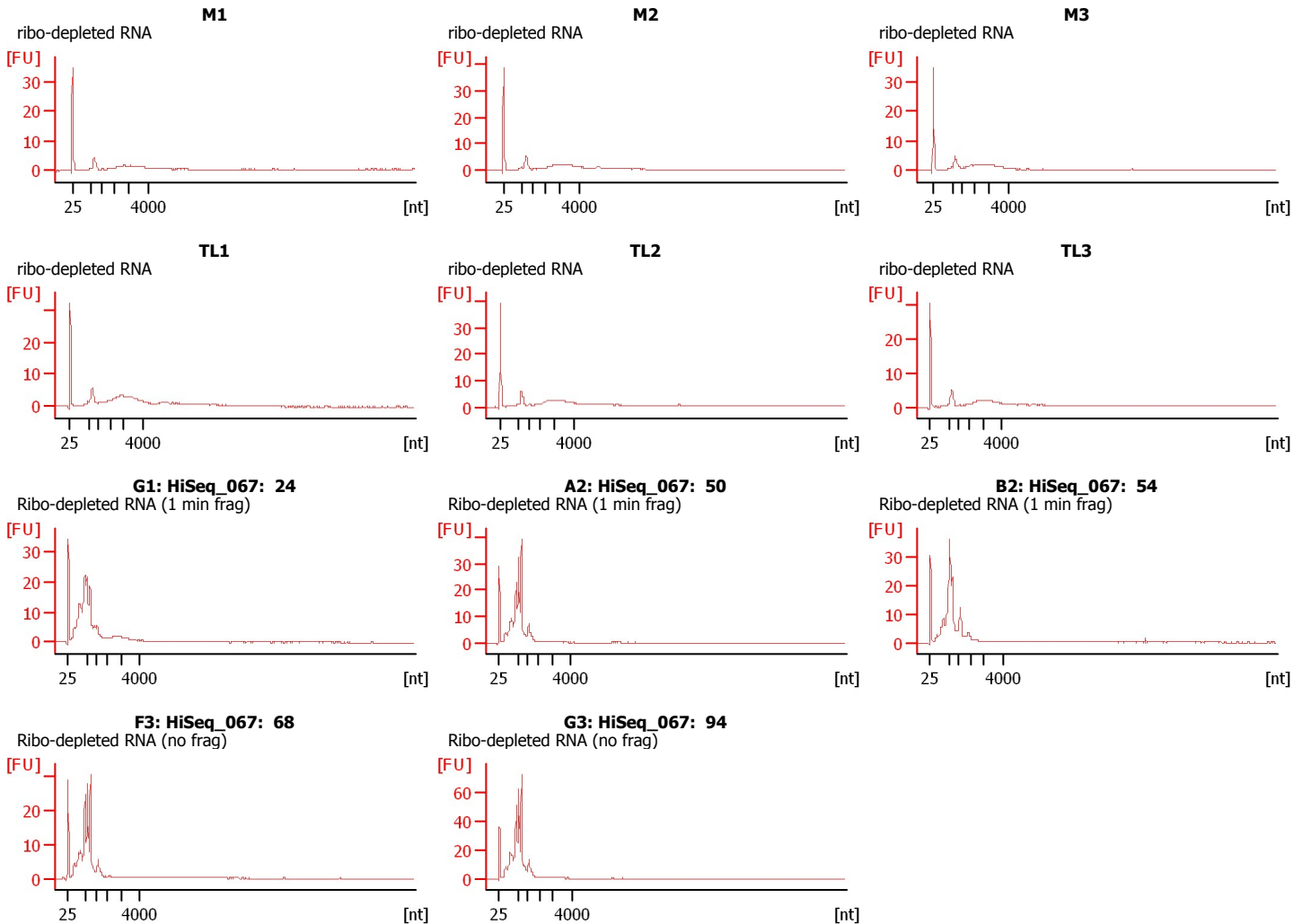
Assay Origin Path: C:\Program Files\Agilent\2100 bioanalyzer\2100 expert\assays\RNA\mRNA Pico Series II.xsy

Assay Class: mRNA Pico
Version: 2.6
Assay Comments: mRNA Analysis pg sensitivity

© Copyright 2003 - 2009 Agilent Technologies, Inc.

Chip Information:

Chip Lot #:
Reagent Kit Lot #:
Chip Comments:



Assay Class: mRNA Pico
Data Path: C:\...ents and Settings\Bioanalyzer\2015-03-12\2015-03-12_003.xad

Created: 3/12/2015 6:07:25 PM
Modified: 3/13/2015 5:13:59 PM

Electrophoresis File Run Summary (Chip Summary)

Sample Name	Sample Comment	Status	Result Label	Result Color
M1	ribo-depleted RNA	✓		
M2	ribo-depleted RNA	✓		
M3	ribo-depleted RNA	✓		
TL1	ribo-depleted RNA	✓		
TL2	ribo-depleted RNA	✓		
TL3	ribo-depleted RNA	✓		
G1: HiSeq_067: 24	Ribo-depleted RNA (1 min frag)	✓		
A2: HiSeq_067: 50	Ribo-depleted RNA (1 min frag)	✓		
B2: HiSeq_067: 54	Ribo-depleted RNA (1 min frag)	✓		
F3: HiSeq_067: 68	Ribo-depleted RNA (no frag)	✓		
G3: HiSeq_067: 94	Ribo-depleted RNA (no frag)	✓		
Ladder		✓		

Chip Lot #**Reagent Kit Lot #****Chip Comments :**

Assay Class: mRNA Pico
Data Path: C:\...ents and Settings\Bioanalyzer\2015-03-12\2015-03-12_003.xad

Created: 3/12/2015 6:07:25 PM
Modified: 3/13/2015 5:13:59 PM

Electrophoresis Assay Details

General Analysis Settings

Number of Available Sample and Ladder Wells (Max.) : 12
Minimum Visible Range [s] : 14
Maximum Visible Range [s] : 85
Start Analysis Time Range [s] : 15
End Analysis Time Range [s] : 84
Ladder Concentration [pg/μl] : 1000
Lower Marker Concentration [pg/μl] : 0
Upper Marker Concentration [pg/μl] : 0
Used Lower Marker for Quantitation
Standard Curve Fit is Logarithmic
Show Data Aligned to Lower Marker

Integrator Settings

Integration Start Time [s] : 15
Integration End Time [s] : 84
Slope Threshold : 0.2
Height Threshold [FU] : 0.5
Area Threshold : 0.1
Width Threshold [s] : 0.2
Baseline Plateau [s] : 0.5

Filter Settings

Filter Width [s] : 0.5
Polynomial Order : 4

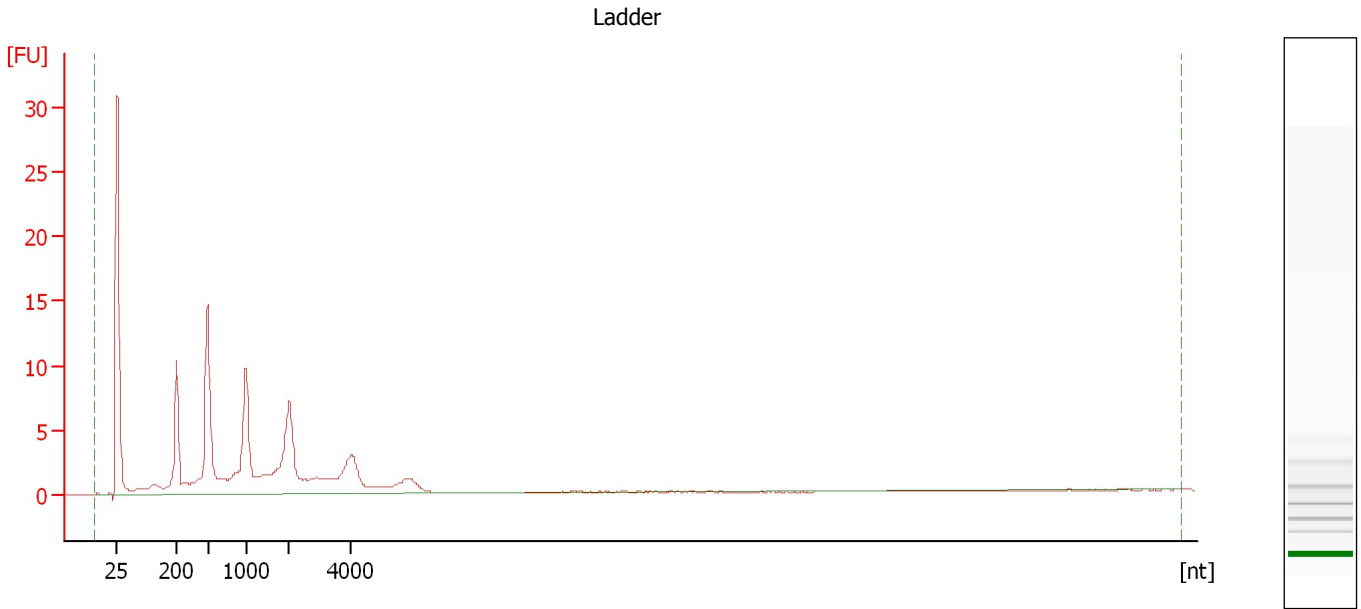
Ladder

Ladder Peak	Size
1	25
2	200
3	500
4	1000
5	2000
6	4000

Assay Class: mRNA Pico
Data Path: C:\...ents and Settings\Bioanalyzer\2015-03-12\2015-03-12_003.xad

Created: 3/12/2015 6:07:25 PM
Modified: 3/13/2015 5:13:59 PM

Electropherogram Summary



Overall Results for Ladder

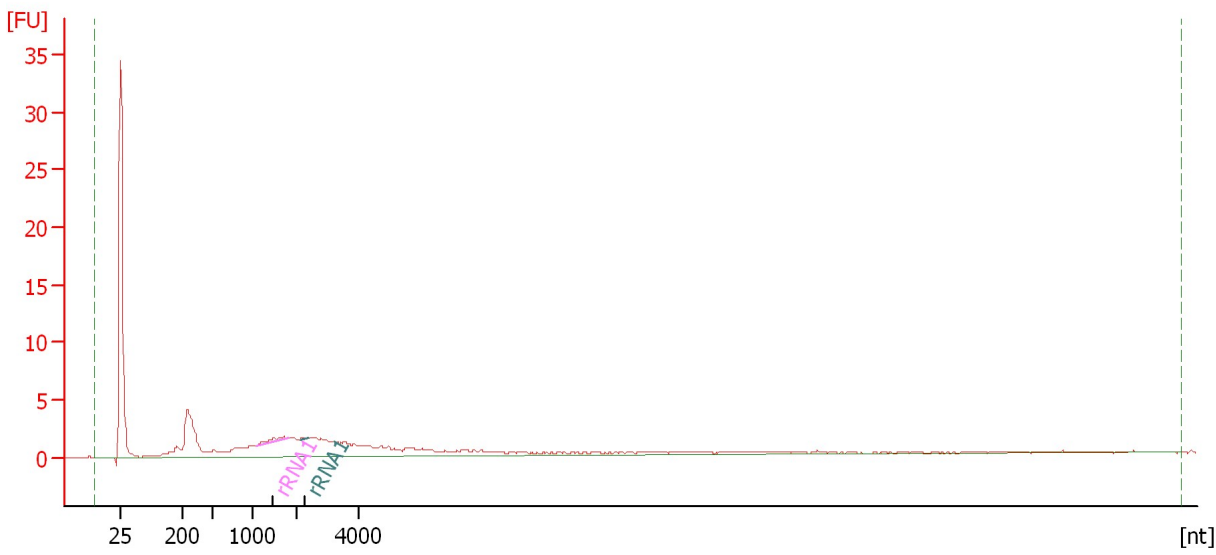
RNA Area: 129.3 RNA Concentration: 1,000 pg/μl

Assay Class: mRNA Pico
Data Path: C:\...ents and Settings\Bioanalyzer\2015-03-12\2015-03-12_003.xad

Created: 3/12/2015 6:07:25 PM
Modified: 3/13/2015 5:13:59 PM

Electropherogram Summary Continued ...

M1 [ribo-depleted RNA]



Overall Results for sample 1 : M1

RNA Area: 82.2 rRNA Contamination: 1.4 %
RNA Concentration: 636 pg/μl

Fragment table for sample 1 : M1

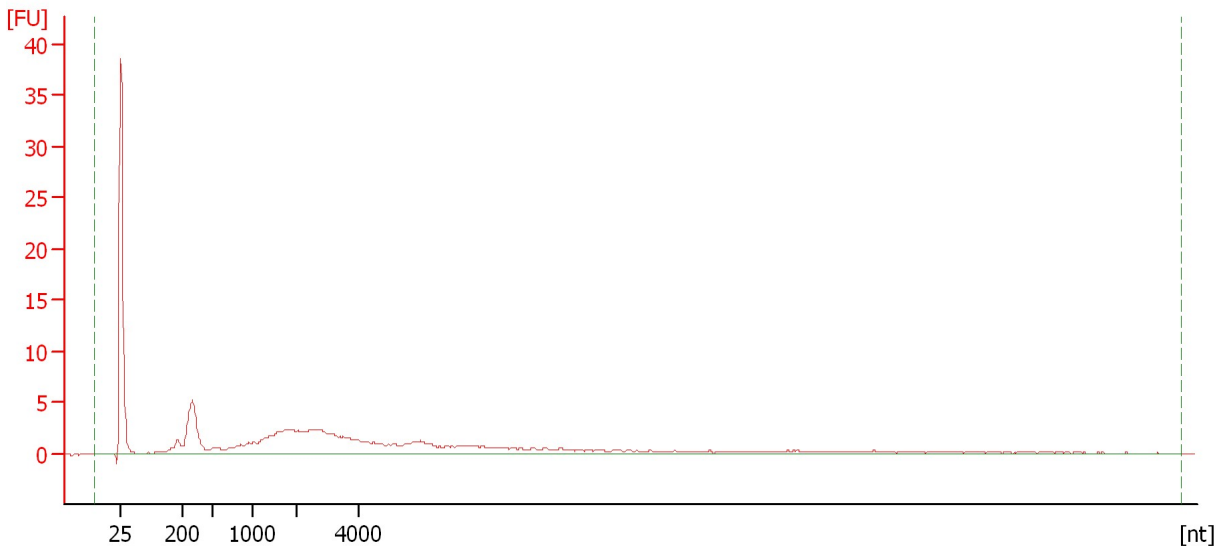
Name	Start Size [nt]	End Size [nt]	Area	% of total Area
rRNA1	1,121	1,815	1.0	1.3
rRNA1	2,148	2,401	0.1	0.1

Assay Class: mRNA Pico
Data Path: C:\...ents and Settings\Bioanalyzer\2015-03-12\2015-03-12_003.xad

Created: 3/12/2015 6:07:25 PM
Modified: 3/13/2015 5:13:59 PM

Electropherogram Summary Continued ...

M2 [ribo-depleted RNA]



Overall Results for sample 2 : M2

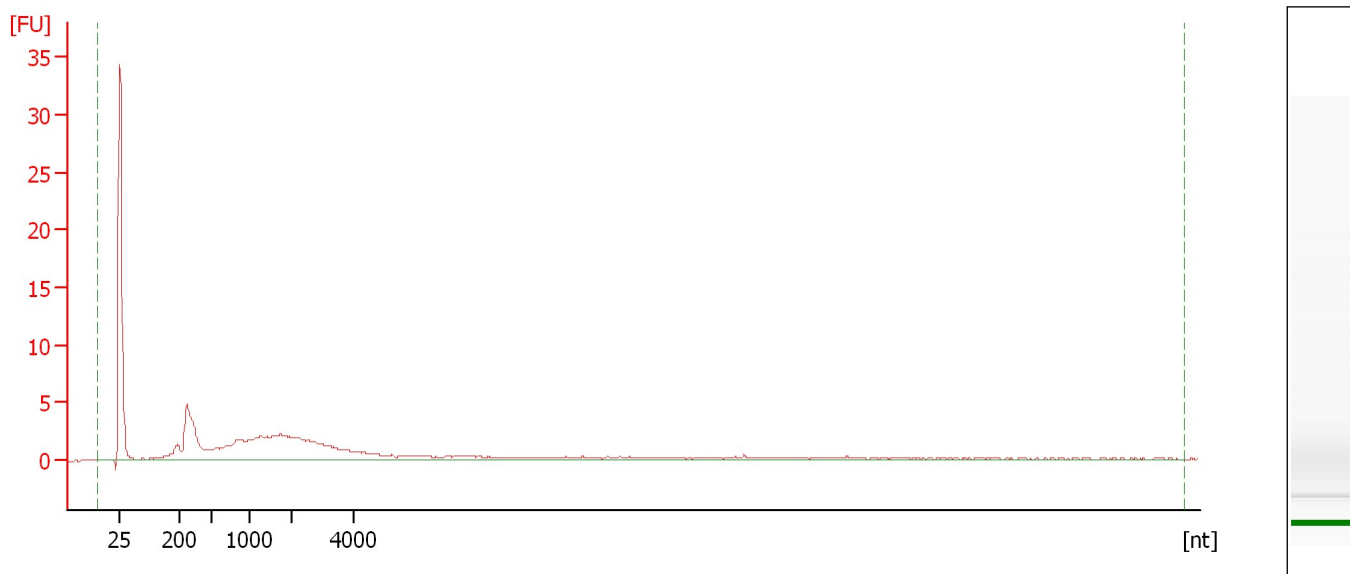
RNA Area:	112.0	rRNA Contamination:	0.0 %
RNA Concentration:	866 pg/μl		

Assay Class: mRNA Pico
Data Path: C:\...ents and Settings\Bioanalyzer\2015-03-12\2015-03-12_003.xad

Created: 3/12/2015 6:07:25 PM
Modified: 3/13/2015 5:13:59 PM

Electropherogram Summary Continued ...

M3 [ribo-depleted RNA]



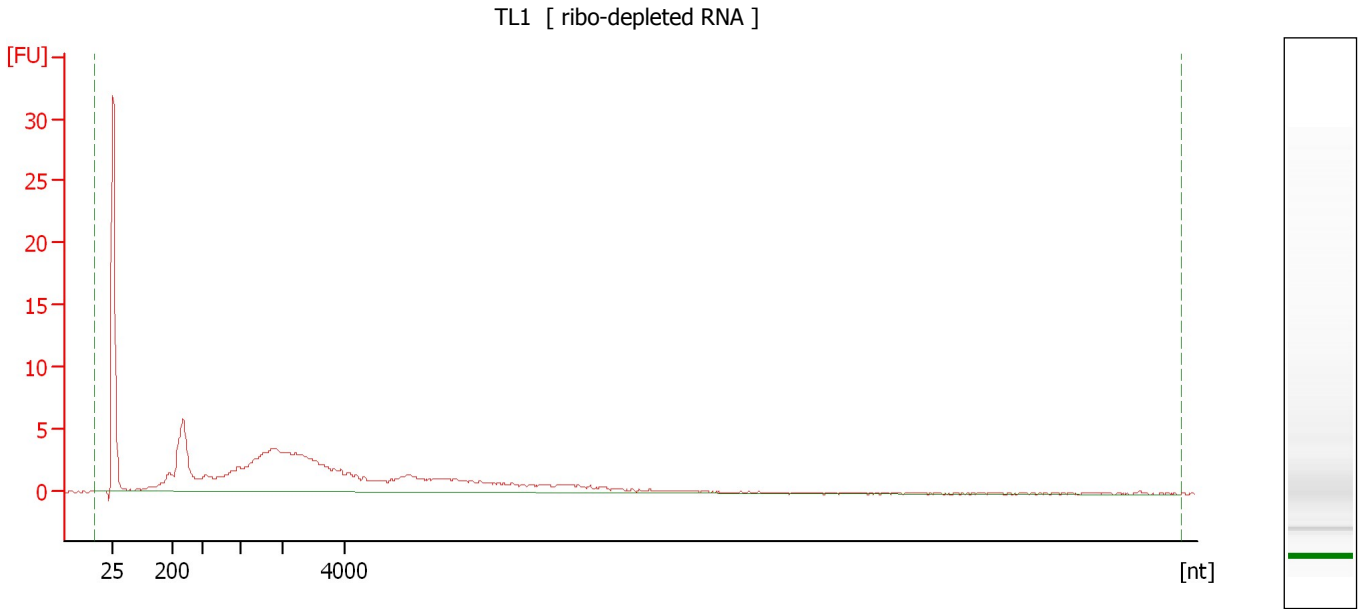
Overall Results for sample 3 : M3

RNA Area: 93.8 rRNA Contamination: 0.0 %
RNA Concentration: 726 pg/μl

Assay Class: mRNA Pico
Data Path: C:\...ents and Settings\Bioanalyzer\2015-03-12\2015-03-12_003.xad

Created: 3/12/2015 6:07:25 PM
Modified: 3/13/2015 5:13:59 PM

Electropherogram Summary Continued ...



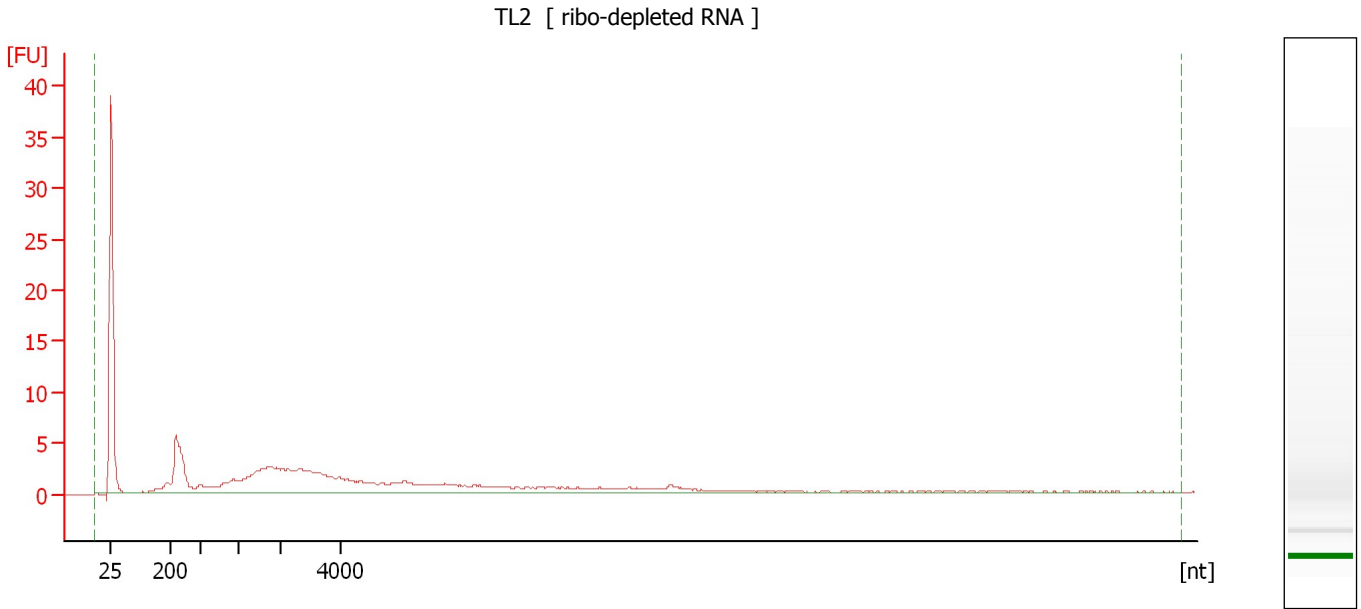
Overall Results for sample 4 : TL1

RNA Area:	144.2	rRNA Contamination:	0.0 %
RNA Concentration:	1,116 pg/μl		

Assay Class: mRNA Pico
Data Path: C:\...ents and Settings\Bioanalyzer\2015-03-12\2015-03-12_003.xad

Created: 3/12/2015 6:07:25 PM
Modified: 3/13/2015 5:13:59 PM

Electropherogram Summary Continued ...



Overall Results for sample 5 : TL2

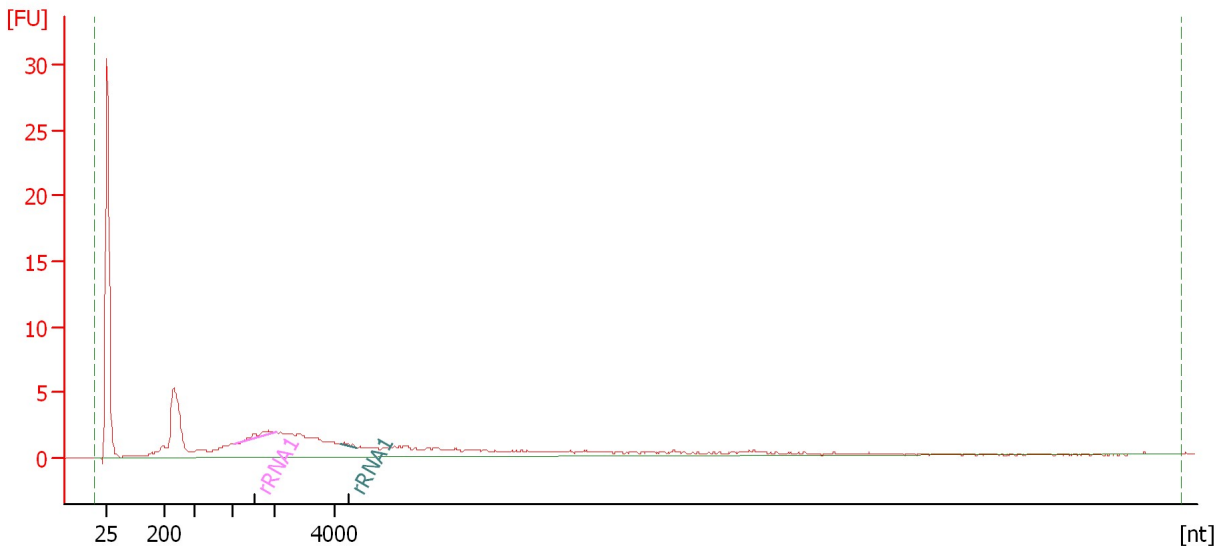
RNA Area:	123.4	rRNA Contamination:	0.0 %
RNA Concentration:	955 pg/ μ l		

Assay Class: mRNA Pico
Data Path: C:\...ents and Settings\Bioanalyzer\2015-03-12\2015-03-12_003.xad

Created: 3/12/2015 6:07:25 PM
Modified: 3/13/2015 5:13:59 PM

Electropherogram Summary Continued ...

TL3 [ribo-depleted RNA]



Overall Results for sample 6 : TL3

RNA Area: 93.7 rRNA Contamination: 2.3 %
RNA Concentration: 725 pg/μl

Fragment table for sample 6 : TL3

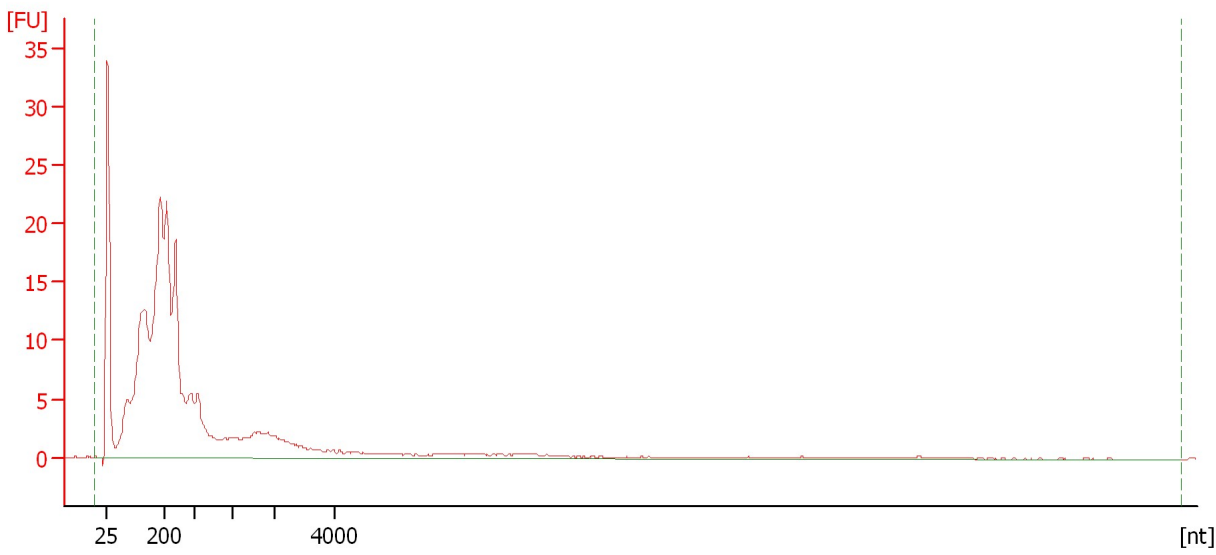
Name	Start Size [nt]	End Size [nt]	Area	% of total Area
rRNA1	1,069	2,092	1.9	2.0
rRNA1	4,243	4,748	0.2	0.2

Assay Class: mRNA Pico
Data Path: C:\...ents and Settings\Bioanalyzer\2015-03-12\2015-03-12_003.xad

Created: 3/12/2015 6:07:25 PM
Modified: 3/13/2015 5:13:59 PM

Electropherogram Summary Continued ...

G1: HiSeq_067: 24 [Ribo-depleted RNA (1 min frag)]



Overall Results for sample 7 : G1: HiSeq_067: 24

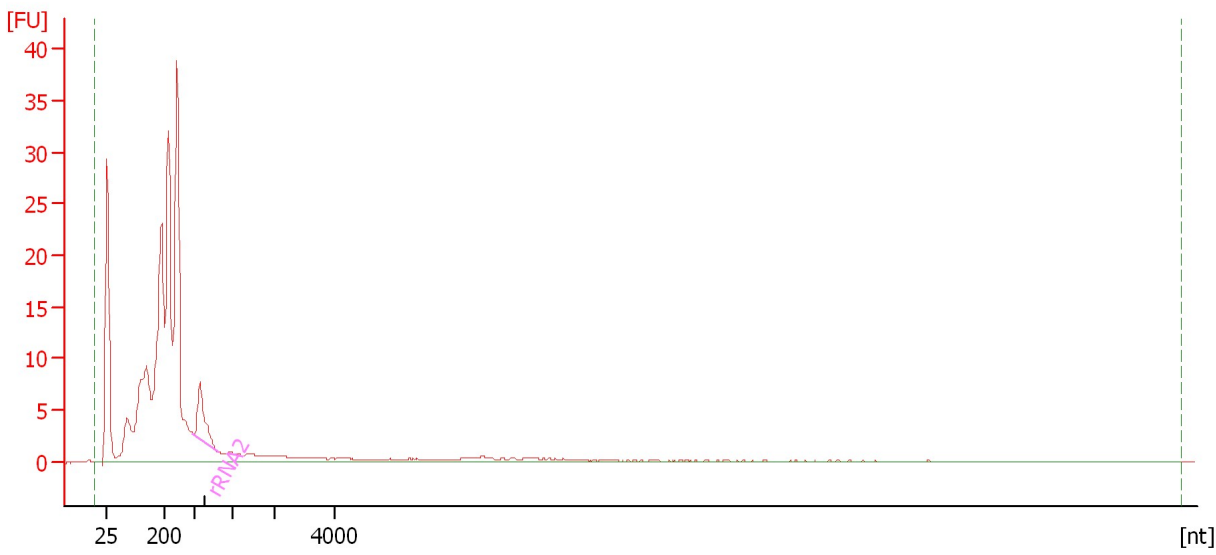
RNA Area: 322.7 rRNA Contamination: 0.0 %
RNA Concentration: 2,496 pg/μl

Assay Class: mRNA Pico
Data Path: C:\...ents and Settings\Bioanalyzer\2015-03-12\2015-03-12_003.xad

Created: 3/12/2015 6:07:25 PM
Modified: 3/13/2015 5:13:59 PM

Electropherogram Summary Continued ...

A2: HiSeq_067: 50 [Ribo-depleted RNA (1 min frag)]



Overall Results for sample 8 : A2: HiSeq_067: 50

RNA Area: 299.2 rRNA Contamination: 4.0 %
RNA Concentration: 2,314 pg/μl

Fragment table for sample 8 : A2: HiSeq_067: 50

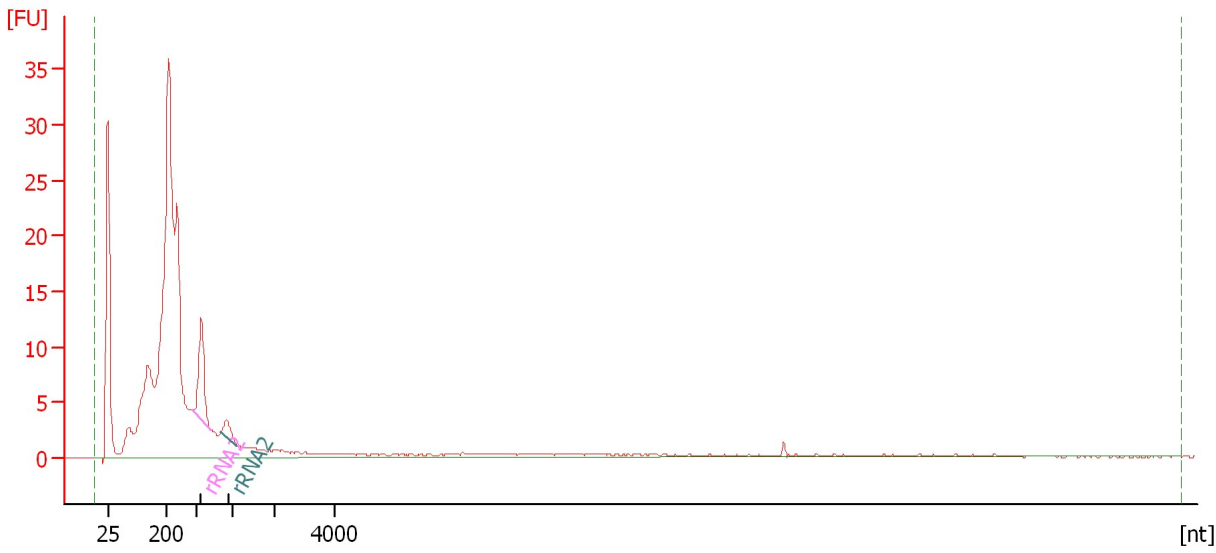
Name	Start Size [nt]	End Size [nt]	Area	% of total Area
rRNA2	483	812	12.0	4.0

Assay Class: mRNA Pico
Data Path: C:\...ents and Settings\Bioanalyzer\2015-03-12\2015-03-12_003.xad

Created: 3/12/2015 6:07:25 PM
Modified: 3/13/2015 5:13:59 PM

Electropherogram Summary Continued ...

B2: HiSeq_067: 54 [Ribo-depleted RNA (1 min frag)]



Overall Results for sample 9 : B2: HiSeq_067: 54

RNA Area: 297.3 rRNA Contamination: 6.2 %
RNA Concentration: 2,300 pg/μl

Fragment table for sample 9 : B2: HiSeq_067: 54

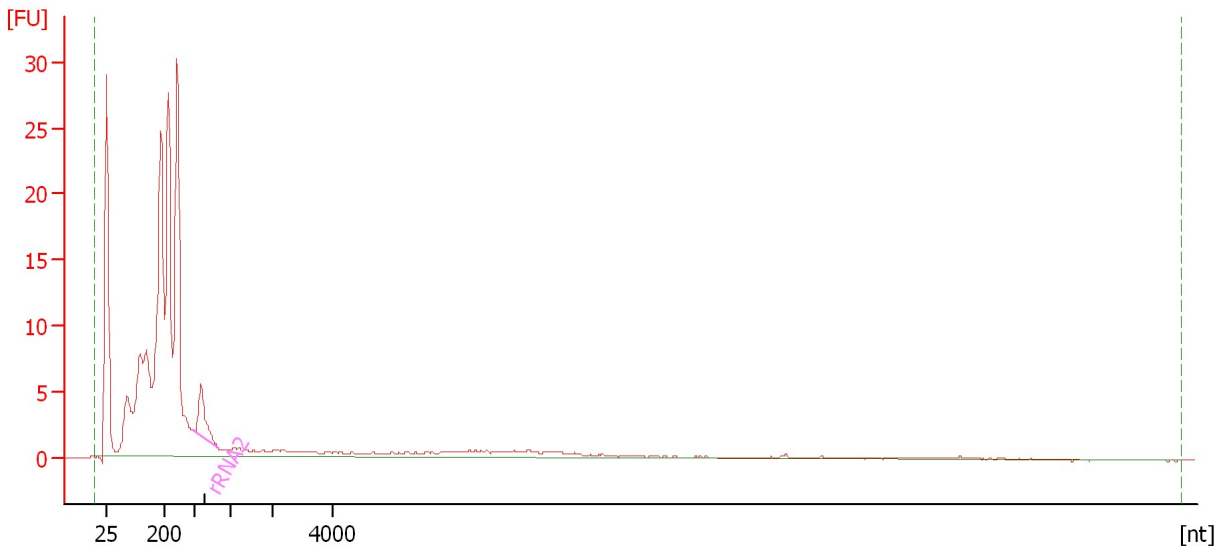
Name	Start Size [nt]	End Size [nt]	Area	% of total Area
rRNA2	473	689	15.5	5.2
rRNA2	840	1,098	3.0	1.0

Assay Class: mRNA Pico
Data Path: C:\...ents and Settings\Bioanalyzer\2015-03-12\2015-03-12_003.xad

Created: 3/12/2015 6:07:25 PM
Modified: 3/13/2015 5:13:59 PM

Electropherogram Summary Continued ...

F3: HiSeq_067: 68 [Ribo-depleted RNA (no frag)]



Overall Results for sample 10 : F3: HiSeq_067: 68

RNA Area: 262.2 rRNA Contamination: 3.2 %
RNA Concentration: 2,028 pg/μl

Fragment table for sample 10 : F3: HiSeq_067: 68

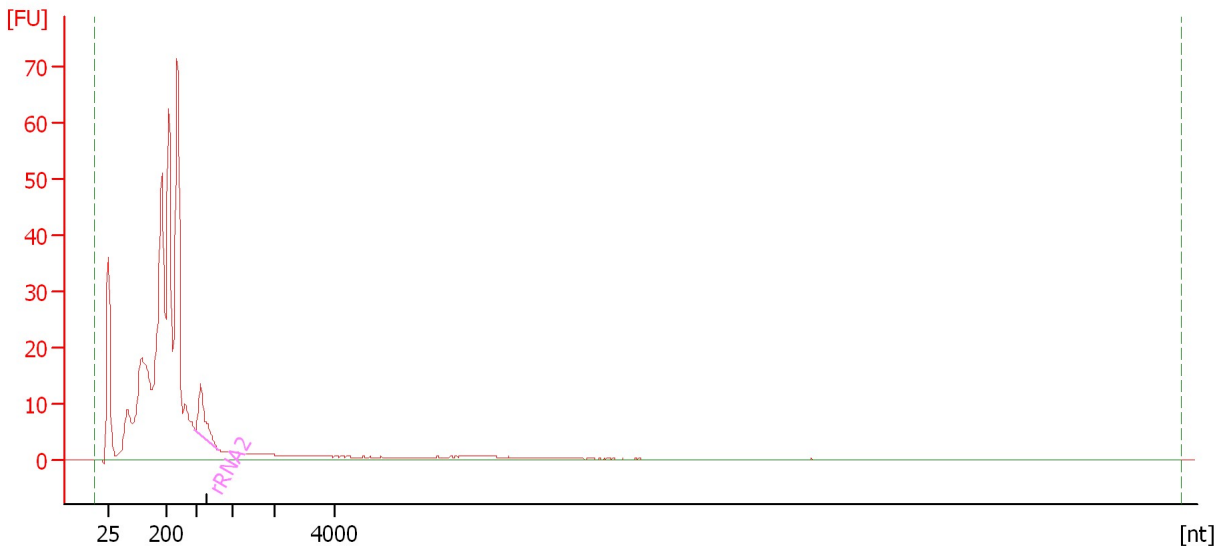
Name	Start Size [nt]	End Size [nt]	Area	% of total Area
rRNA2	494	827	8.4	3.2

Assay Class: mRNA Pico
Data Path: C:\...ents and Settings\Bioanalyzer\2015-03-12\2015-03-12_003.xad

Created: 3/12/2015 6:07:25 PM
Modified: 3/13/2015 5:13:59 PM

Electropherogram Summary Continued ...

G3: HiSeq_067: 94 [Ribo-depleted RNA (no frag)]



Overall Results for sample 11 : G3: HiSeq_067: 94

RNA Area: 558.2 rRNA Contamination: 3.4 %
RNA Concentration: 4,318 pg/μl

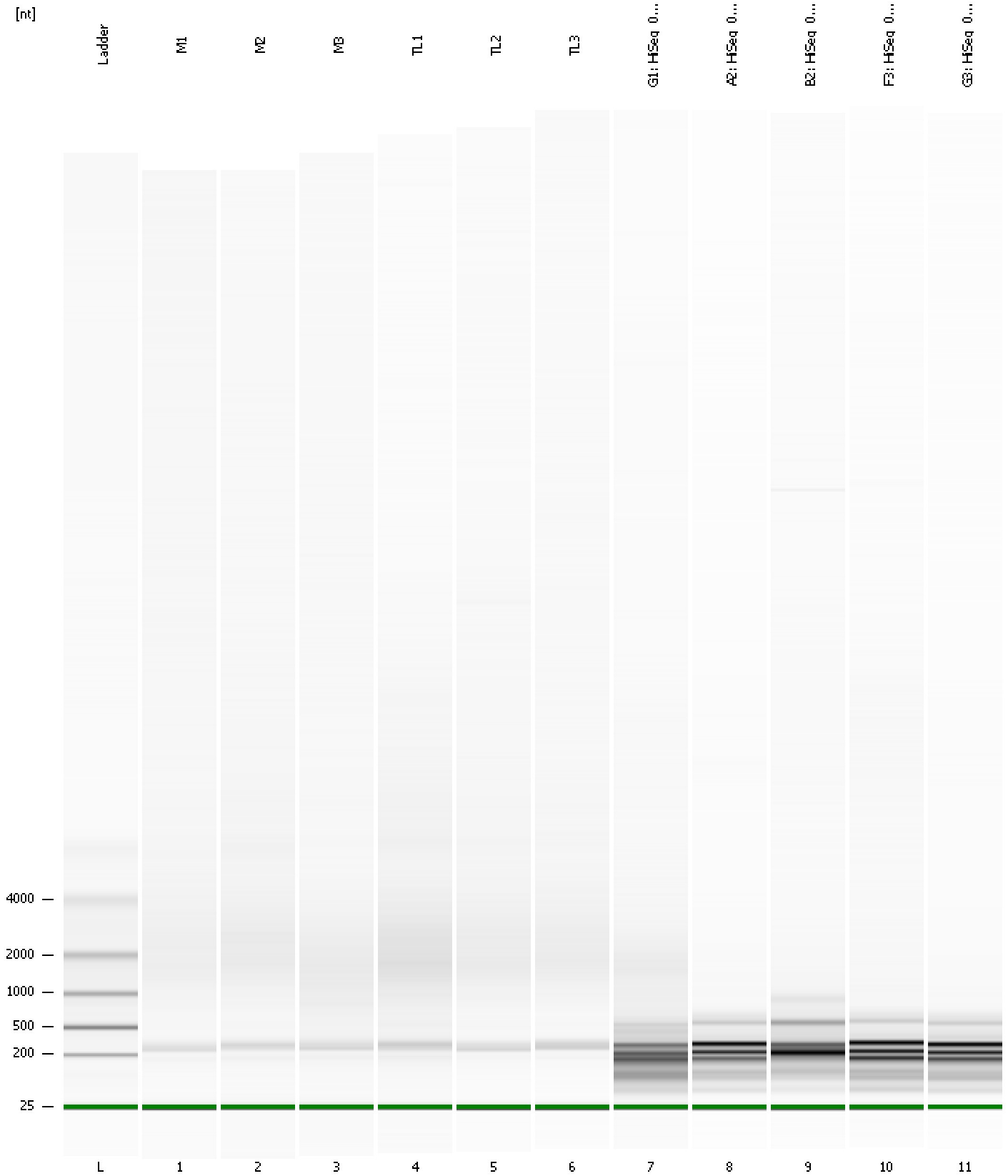
Fragment table for sample 11 : G3: HiSeq_067: 94

Name	Start Size [nt]	End Size [nt]	Area	% of total Area
rRNA2	488	797	18.8	3.4

Assay Class: mRNA Pico
Data Path: C:\...ents and Settings\Bioanalyzer\2015-03-12\2015-03-12_003.xad

Created: 3/12/2015 6:07:25 PM
Modified: 3/13/2015 5:13:59 PM

Gel Image



Assay Class: mRNA Pico
 Data Path: C:\...ents and Settings\Bioanalyzer\2015-03-12\2015-03-12_003.xad

Created: 3/12/2015 6:07:25 PM
 Modified: 3/13/2015 5:13:59 PM

Run Logbook

Description	Number	Source	Category	Sub Category	Time	Time Zone	User	Host
Run ended on port 1 (Number of wells acquired: 12)		Instrument	Run		3/12/2015 9:32:21 PM	(GMT --07:00) Pacific Standard Time	UC Davis	D8XSMGH1
Run started on port 1 (File: C:\Documents and Settings\Bioanalyzer\2015-03-12\2015-03-12_003.xad)		Instrument	Run		3/12/2015 9:07:25 PM	(GMT --07:00) Pacific Standard Time	UC Davis	D8XSMGH1
Product Number : G2938B		Instrument	Run		3/12/2015 9:07:25 PM	(GMT --07:00) Pacific Standard Time	UC Davis	D8XSMGH1
Name :		Instrument	Run		3/12/2015 9:07:25 PM	(GMT --07:00) Pacific Standard Time	UC Davis	D8XSMGH1
Vendor : Agilent Technologies		Instrument	Run		3/12/2015 9:07:25 PM	(GMT --07:00) Pacific Standard Time	UC Davis	D8XSMGH1
Serial# : DE13701086		Instrument	Run		3/12/2015 9:07:25 PM	(GMT --07:00) Pacific Standard Time	UC Davis	D8XSMGH1
Firmware : C.01.069		Instrument	Run		3/12/2015 9:07:25 PM	(GMT --07:00) Pacific Standard Time	UC Davis	D8XSMGH1
Cartridge : Electrode		Instrument	Run		3/12/2015 9:07:25 PM	(GMT --07:00) Pacific Standard Time	UC Davis	D8XSMGH1