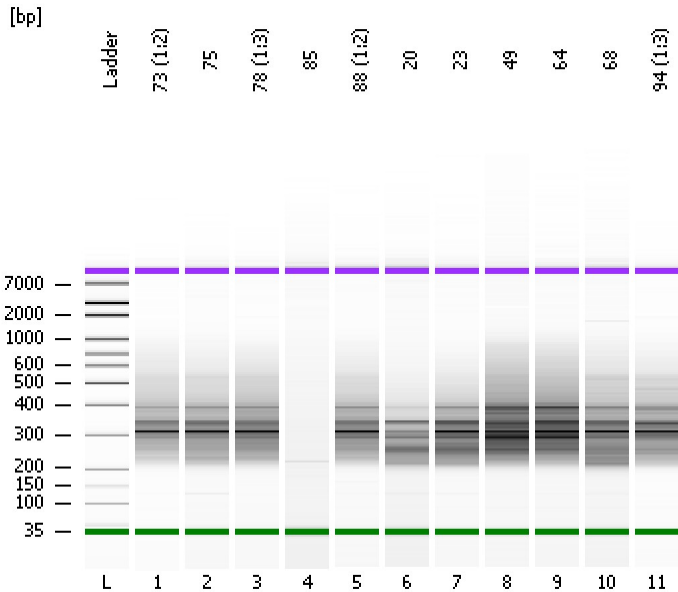


Assay Class: High Sensitivity DNA Assay
Data Path: C:\...ents and Settings\Bioanalyzer\2015-03-16\2015-03-16_001.xad

Created: 3/16/2015 9:52:35 AM
Modified: 3/16/2015 10:38:47 AM

Electrophoresis File Run Summary



Instrument Information:

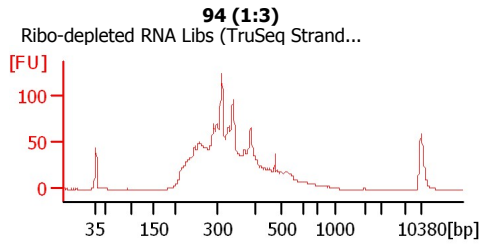
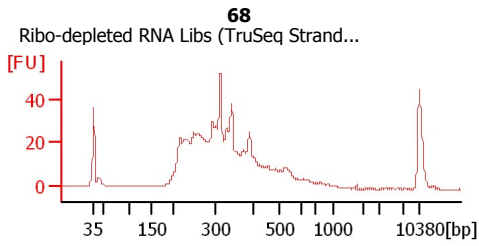
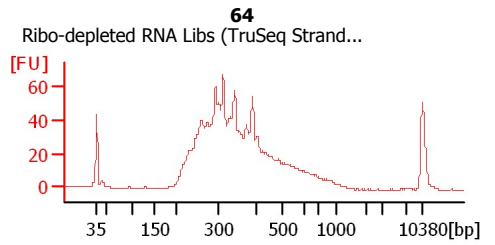
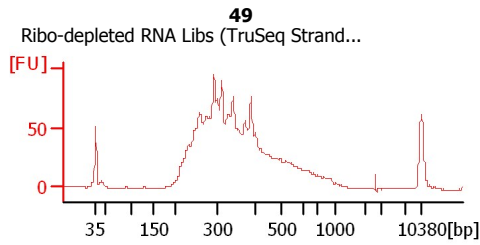
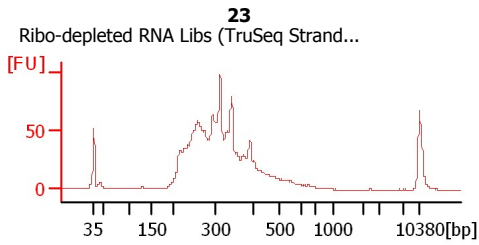
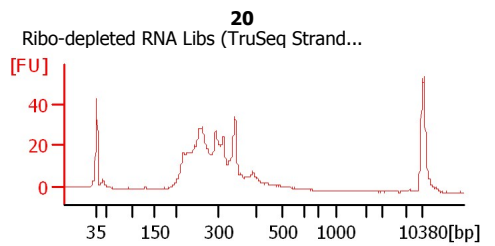
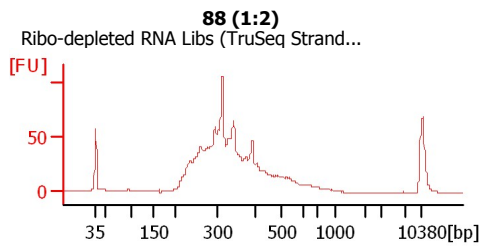
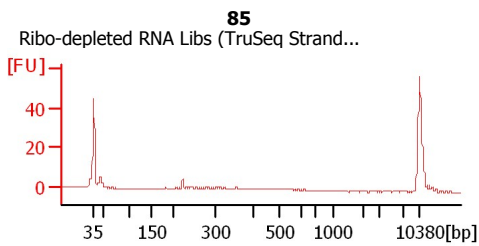
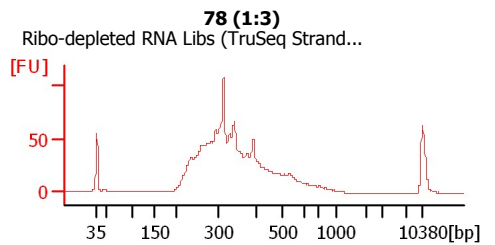
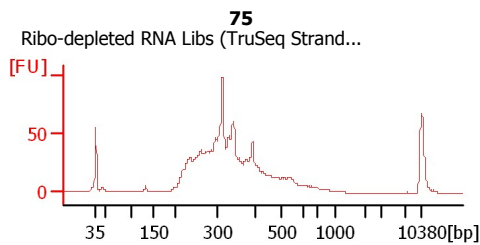
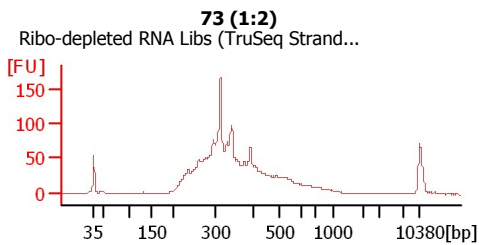
Instrument Name: DE13701086 Firmware: C.01.069
Serial#: DE13701086 Type: G2938B

Assay Information:

Assay Origin Path: C:\Program Files\Agilent\2100 bioanalyzer\2100 expert\assays\dsDNA\High Sensitivity DNA.xsy
Assay Class: High Sensitivity DNA Assay
Version: 1.03
Assay Comments: Copyright © 2003-2010 Agilent Technologies

Chip Information:

Chip Lot #:
Reagent Kit Lot #:
Chip Comments:



Assay Class: High Sensitivity DNA Assay
 Data Path: C:\...ents and Settings\Bioanalyzer\2015-03-16\2015-03-16_001.xad

Created: 3/16/2015 9:52:35 AM
 Modified: 3/16/2015 10:38:47 AM

Electrophoresis File Run Summary (Chip Summary)

Sample Name	Sample Comment	Rest. Digest	Status	Observation	Result Label	Result Color
73 (1:2)	Ribo-depleted RNA Libs (TruSeq Stranded on Sciclone)	<input type="checkbox"/>	✓			
75	Ribo-depleted RNA Libs (TruSeq Stranded on Sciclone)	<input type="checkbox"/>	✓			
78 (1:3)	Ribo-depleted RNA Libs (TruSeq Stranded on Sciclone)	<input type="checkbox"/>	✓			
85	Ribo-depleted RNA Libs (TruSeq Stranded on Sciclone)	<input type="checkbox"/>	✓			
88 (1:2)	Ribo-depleted RNA Libs (TruSeq Stranded on Sciclone)	<input type="checkbox"/>	✓			
20	Ribo-depleted RNA Libs (TruSeq Stranded on Sciclone)	<input type="checkbox"/>	✓			
23	Ribo-depleted RNA Libs (TruSeq Stranded on Sciclone)	<input type="checkbox"/>	✓			
49	Ribo-depleted RNA Libs (TruSeq Stranded on Sciclone)	<input type="checkbox"/>	✓			
64	Ribo-depleted RNA Libs (TruSeq Stranded on Sciclone)	<input type="checkbox"/>	✓			
68	Ribo-depleted RNA Libs (TruSeq Stranded on Sciclone)	<input type="checkbox"/>	✓			
94 (1:3)	Ribo-depleted RNA Libs (TruSeq Stranded on Sciclone)	<input type="checkbox"/>	✓			
Ladder		<input type="checkbox"/>	✓			

Chip Lot #

Reagent Kit Lot #

Chip Comments :

Assay Class: High Sensitivity DNA Assay
 Data Path: C:\...ents and Settings\Bioanalyzer\2015-03-16\2015-03-16_001.xad

Created: 3/16/2015 9:52:35 AM
 Modified: 3/16/2015 10:38:47 AM

Electrophoresis Assay Details

General Analysis Settings

Number of Available Sample and Ladder Wells (Max.) : 12
 Minimum Visible Range [s] : 32
 Maximum Visible Range [s] : 138
 Start Analysis Time Range [s] : 33
 End Analysis Time Range [s] : 137.5
 Ladder Concentration [pg/μl] : 1950
 Uses Standard Area for Ladder Fragments
 Lower Marker Concentration [pg/μl] : 125
 Upper Marker Concentration [pg/μl] : 75
 Used Upper Marker for Quantitation
 Standard Curve Fit is Point to Point
 Show Data Aligned to Lower and Upper Marker

Integrator Settings

Integration Start Time [s] : 33.05
 Integration End Time [s] : 137
 Slope Threshold : 0.8
 Height Threshold [FU] : 5
 Area Threshold : 0.1
 Width Threshold [s] : 0.6
 Baseline Plateau [s] : 0.5

Filter Settings

Filter Width [s] : 0.5
 Polynomial Order : 4

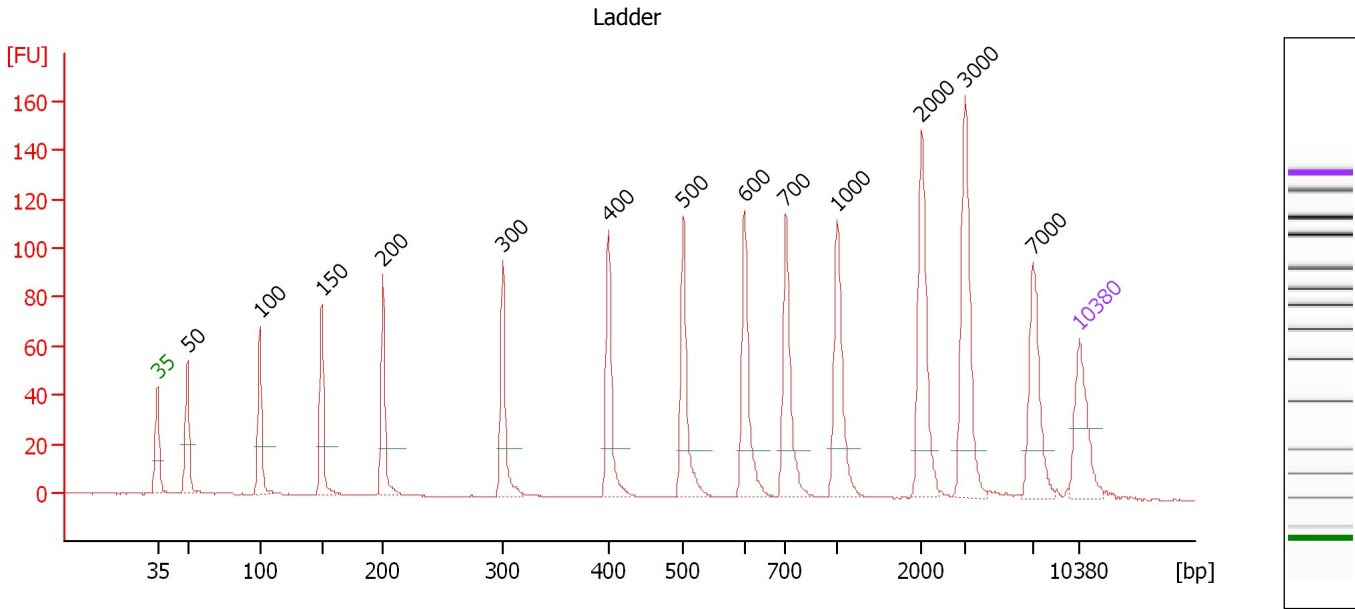
Ladder

Ladder Peak	Size	Area
1	35	160
2	50	210
3	100	208
4	150	221
5	200	242
6	300	270
7	400	305
8	500	306
9	600	336
10	700	321
11	1000	366
12	2000	413
13	3000	411
14	7000	400
15	10380	214

Assay Class: High Sensitivity DNA Assay
 Data Path: C:\...ents and Settings\Bioanalyzer\2015-03-16\2015-03-16_001.xad

Created: 3/16/2015 9:52:35 AM
 Modified: 3/16/2015 10:38:47 AM

Electropherogram Summary



Overall Results for Ladder

Noise: 0.2

Peak table for Ladder

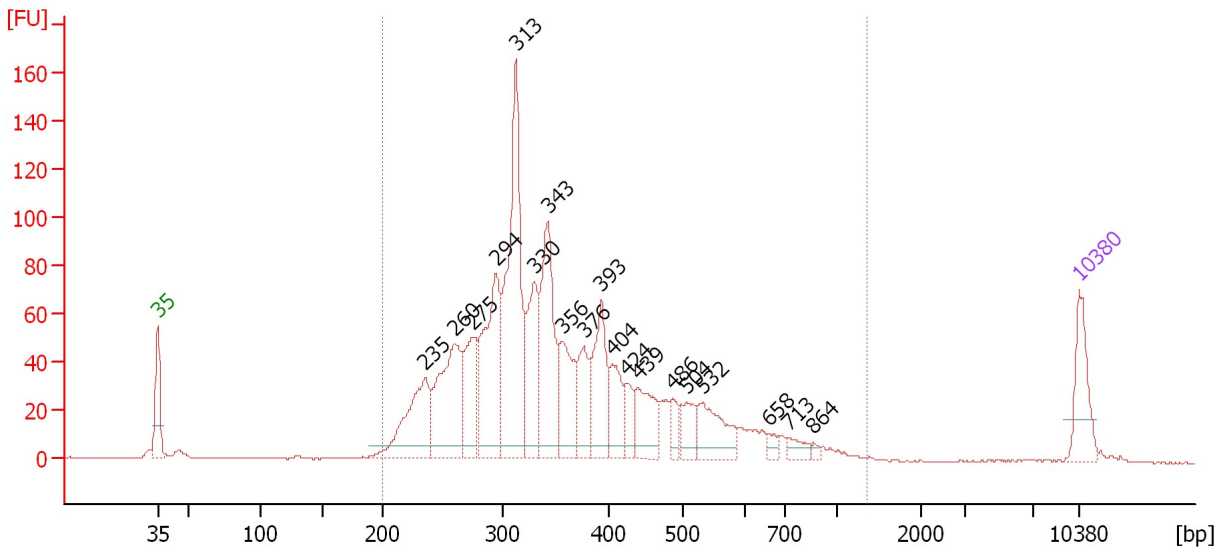
Peak	Size [bp]	Conc. [pg/μl]	Molarity [pmol/l]	Observations	Aligned Migration Time [s]
1	35	125.00	5,411.3	Lower Marker	43.00
2	50	150.00	4,545.5	Ladder Peak	45.27
3	100	150.00	2,272.7	Ladder Peak	50.75
4	150	150.00	1,515.2	Ladder Peak	55.48
5	200	150.00	1,136.4	Ladder Peak	60.12
6	300	150.00	757.6	Ladder Peak	69.21
7	400	150.00	568.2	Ladder Peak	77.28
8	500	150.00	454.5	Ladder Peak	82.94
9	600	150.00	378.8	Ladder Peak	87.58
10	700	150.00	324.7	Ladder Peak	90.73
11	1,000	150.00	227.3	Ladder Peak	94.63
12	2,000	150.00	113.6	Ladder Peak	101.08
13	3,000	150.00	75.8	Ladder Peak	104.33
14	7,000	150.00	32.5	Ladder Peak	109.47
15	10,380	75.00	10.9	Upper Marker	113.00

Assay Class: High Sensitivity DNA Assay
 Data Path: C:\...ents and Settings\Bioanalyzer\2015-03-16\2015-03-16_001.xad

Created: 3/16/2015 9:52:35 AM
 Modified: 3/16/2015 10:38:47 AM

Electropherogram Summary Continued ...

73 (1:2) [Ribo-depleted RNA Libs (TruSeq Stranded on Sciclone)]



Overall Results for sample 1 : 73 (1:2)

Number of peaks found: 19 Corr. Area 1: 1,712.6
 Noise: 0.2

Peak table for sample 1 : 73 (1:2)

Peak	Size [bp]	Conc. [pg/μl]	Molarity [pmol/l]	Observations	Aligned Migration Time [s]
1	35	125.00	5,411.3	Lower Marker	43.00
2	235	211.46	1,361.6		63.33
3	260	262.32	1,525.8		65.62
4	275	155.64	857.9		66.93
5	294	289.30	1,488.9		68.70
6	313	453.17	2,195.1		70.24
7	330	168.89	776.4		71.60
8	343	262.57	1,160.1		72.67
9	356	138.02	587.1		73.75
10	376	93.28	375.4		75.38
11	393	148.66	573.6		76.69
12	404	84.20	315.4		77.53
13	424	45.95	164.1		78.65
14	439	101.25	349.3		79.50
15	486	34.38	107.2		82.16
16	504	52.51	157.8		83.14
17	532	101.13	288.3		84.40
18	658	14.37	33.1		89.40
19	713	23.29	49.5		90.90
20	864	7.47	13.1		92.86
21	10,380	75.00	10.9	Upper Marker	113.00

Region table for sample 1 : 73 (1:2)

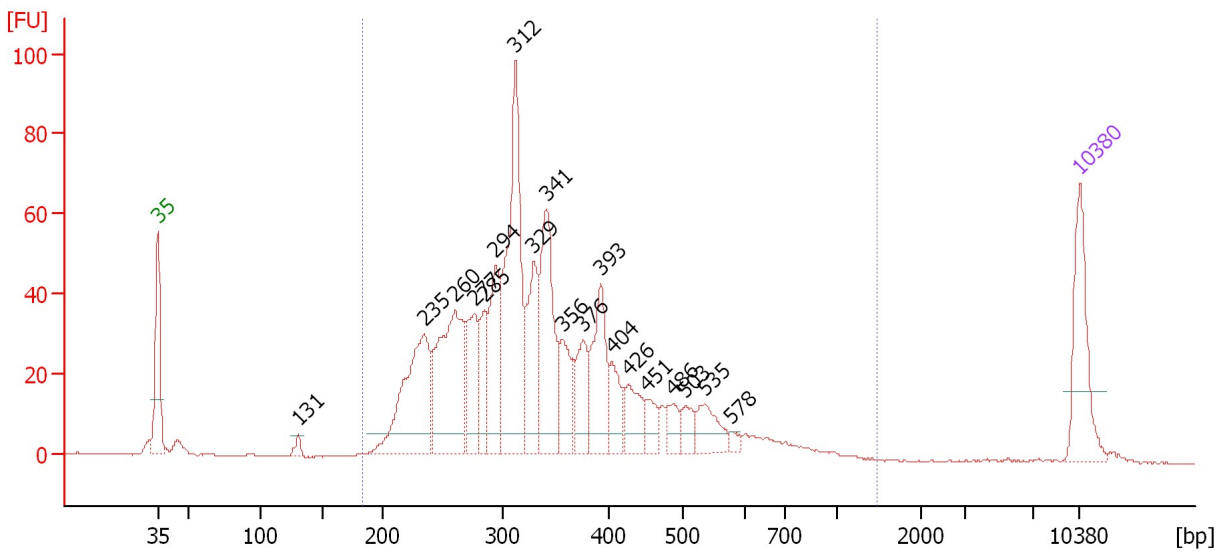
From [bp]	Average Size [bp]	To [bp]	Corr. Area	Molarity [pmol/l]	% of Total	Size distribution in CV [%]	Conc. [pg/μl]	Color
200	374	1,348	1,712.6	12,972.5	98	35.5	2,836.25	Blue

Assay Class: High Sensitivity DNA Assay
 Data Path: C:\...ents and Settings\Bioanalyzer\2015-03-16\2015-03-16_001.xad

Created: 3/16/2015 9:52:35 AM
 Modified: 3/16/2015 10:38:47 AM

Electropherogram Summary Continued ...

75 [Ribo-depleted RNA Libs (TruSeq Stranded on Sciclone)]



Overall Results for sample 2 : 75

Number of peaks found: 19 Corr. Area 1: 1,122.0
 Noise: 0.1

Peak table for sample 2 : 75

Peak	Size [bp]	Conc. [pg/μl]	Molarity [pmol/l]	Observations	Aligned Migration Time [s]
1	35	125.00	5,411.3	Lower Marker	43.00
2	131	10.87	125.6		53.69
3	235	202.95	1,309.0		63.29
4	260	213.60	1,245.4		65.56
5	277	88.28	483.7		67.07
6	285	59.31	315.5		67.83
7	294	105.81	544.9		68.68
8	312	273.24	1,326.0		70.20
9	329	98.25	452.2		71.57
10	341	160.47	713.1		72.51
11	356	58.90	250.5		73.74
12	376	58.64	236.3		75.35
13	393	94.68	365.5		76.68
14	404	40.29	151.0		77.53
15	426	45.27	161.0		78.76
16	451	23.73	79.7		80.18
17	486	21.26	66.2		82.16
18	503	20.77	62.6		83.06
19	535	39.93	113.0		84.57
20	578	6.69	17.5		86.56
21	10,380	75.00	10.9	Upper Marker	113.00

Region table for sample 2 : 75

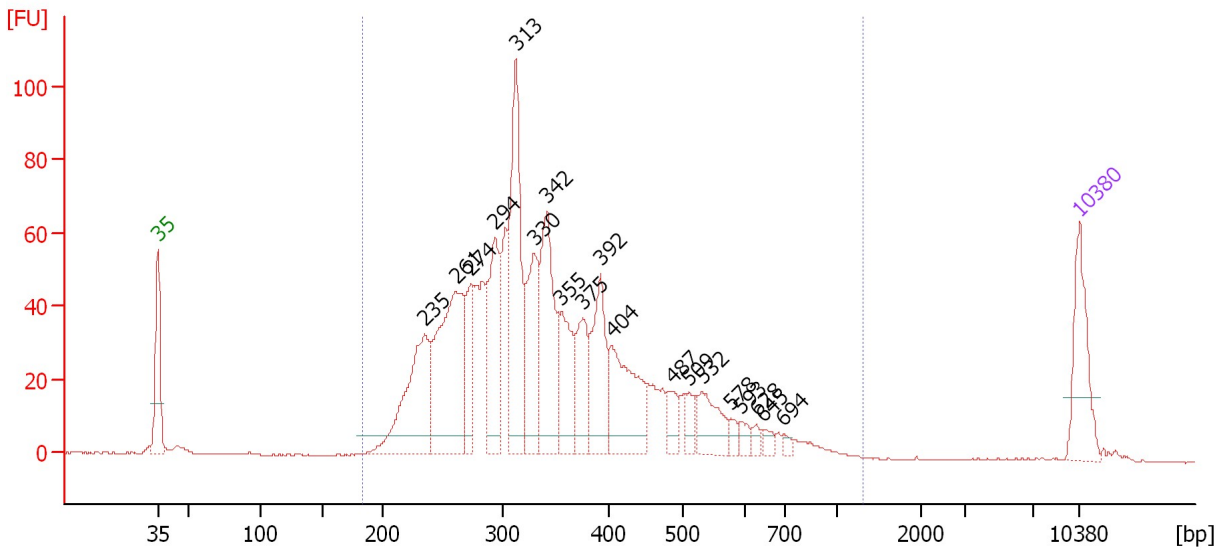
From [bp]	Average Size [bp]	To [bp]	Corr. Area	Molarity [pmol/l]	% of Total	Size distribution in CV [%]	Conc. [pg/μl]	Color
183	355	1,466	1,122.0	8,494.9	97	34.6	1,779.38	Blue

Assay Class: High Sensitivity DNA Assay
 Data Path: C:\...ents and Settings\Bioanalyzer\2015-03-16\2015-03-16_001.xad

Created: 3/16/2015 9:52:35 AM
 Modified: 3/16/2015 10:38:47 AM

Electropherogram Summary Continued ...

78 (1:3) [Ribo-depleted RNA Libs (TruSeq Stranded on Sciclone)]



Overall Results for sample 3 : 78 (1:3)

Number of peaks found: 19 Corr. Area 1: 1,360.5
 Noise: 0.1

Peak table for sample 3 : 78 (1:3)

Peak	Size [bp]	Conc. [pg/μl]	Molarity [pmol/l]	Observations	Aligned Migration Time [s]
1	35	125.00	5,411.3	Lower Marker	43.00
2	235	218.64	1,411.2		63.28
3	261	276.40	1,602.8		65.69
4	274	79.74	440.9		66.85
5	294	146.52	755.9		68.63
6	313	244.62	1,185.6		70.23
7	330	133.57	613.3		71.63
8	342	180.10	798.1		72.59
9	355	108.48	462.9		73.66
10	375	81.87	330.4		75.30
11	392	117.76	455.0		76.65
12	404	141.29	529.7		77.52
13	487	28.78	89.6		82.20
14	509	19.72	58.7		83.36
15	532	58.44	166.5		84.42
16	578	11.07	29.0		86.54
17	593	12.87	32.9		87.27
18	628	9.14	22.0		88.48
19	645	10.48	24.6		89.01
20	694	6.63	14.5		90.55
21	10,380	75.00	10.9	Upper Marker	113.00

Region table for sample 3 : 78 (1:3)

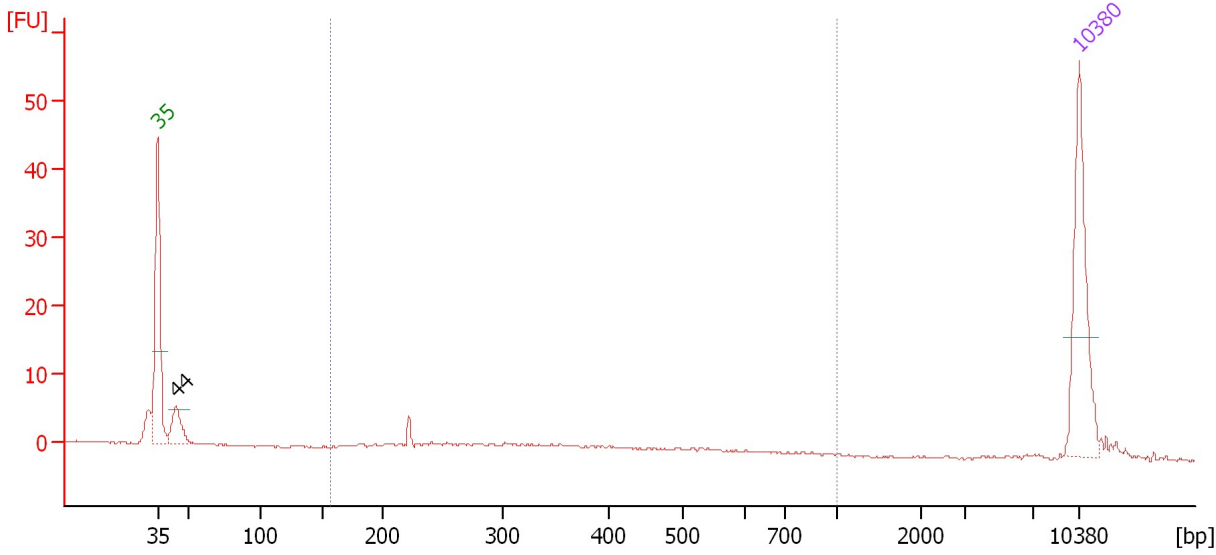
From [bp]	Average Size [bp]	To [bp]	Corr. Area	Molarity [pmol/l]	% of Total	Size distribution in CV [%]	Conc. [pg/μl]	Color
183	361	1,293	1,360.5	10,882.7	99	33.5	2,312.79	Blue

Assay Class: High Sensitivity DNA Assay
 Data Path: C:\...ents and Settings\Bioanalyzer\2015-03-16\2015-03-16_001.xad

Created: 3/16/2015 9:52:35 AM
 Modified: 3/16/2015 10:38:47 AM

Electropherogram Summary Continued ...

85 [Ribo-depleted RNA Libs (TruSeq Stranded on Sciclone)]



Overall Results for sample 4 : 85

Number of peaks found: 1 Corr. Area 1: 27.8
 Noise: 0.1

Peak table for sample 4 : 85

Peak	Size [bp]	Conc. [pg/μl]	Molarity [pmol/l]	Observations	Aligned Migration Time [s]
1	35	125.00	5,411.3	Lower Marker	43.00
2	44	32.16	1,105.2		44.38
3	10,380	75.00	10.9	Upper Marker	113.00

Region table for sample 4 : 85

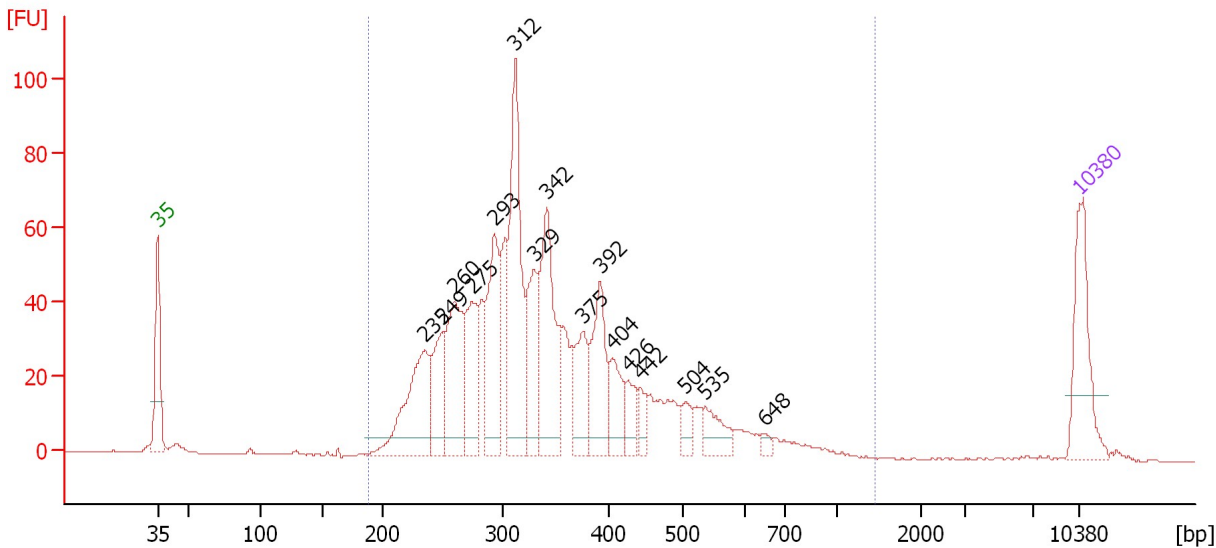
From [bp]	Average Size [bp]	To [bp]	Corr. Area	Molarity [pmol/l]	% of Total	Size distribution in CV [%]	Conc. [pg/μl]	Color
157	374	1,000	27.8	294.0	52	39.3	59.86	Blue

Assay Class: High Sensitivity DNA Assay
 Data Path: C:\...ents and Settings\Bioanalyzer\2015-03-16\2015-03-16_001.xad

Created: 3/16/2015 9:52:35 AM
 Modified: 3/16/2015 10:38:47 AM

Electropherogram Summary Continued ...

88 (1:2) [Ribo-depleted RNA Libs (TruSeq Stranded on Sciclone)]



Overall Results for sample 5 : 88 (1:2)

Number of peaks found: 16 Corr. Area 1: 1,192.6
 Noise: 0.1

Peak table for sample 5 : 88 (1:2)

Peak	Size [bp]	Conc. [pg/μl]	Molarity [pmol/l]	Observations	Aligned Migration Time [s]
1	35	125.00	5,411.3	Lower Marker	43.00
2	235	152.01	978.7		63.33
3	249	79.69	484.5		64.59
4	260	139.79	813.8		65.60
5	275	94.00	518.6		66.90
6	293	132.17	682.4		68.61
7	312	214.52	1,041.9		70.17
8	329	87.87	404.2		71.58
9	342	169.09	749.4		72.59
10	375	71.51	289.0		75.26
11	392	91.96	355.6		76.62
12	404	48.90	183.3		77.52
13	426	32.89	117.1		78.73
14	442	19.10	65.4		79.69
15	504	21.04	63.3		83.11
16	535	35.42	100.3		84.57
17	648	6.36	14.9		89.10
18	10,380	75.00	10.9	Upper Marker	113.00

Region table for sample 5 : 88 (1:2)

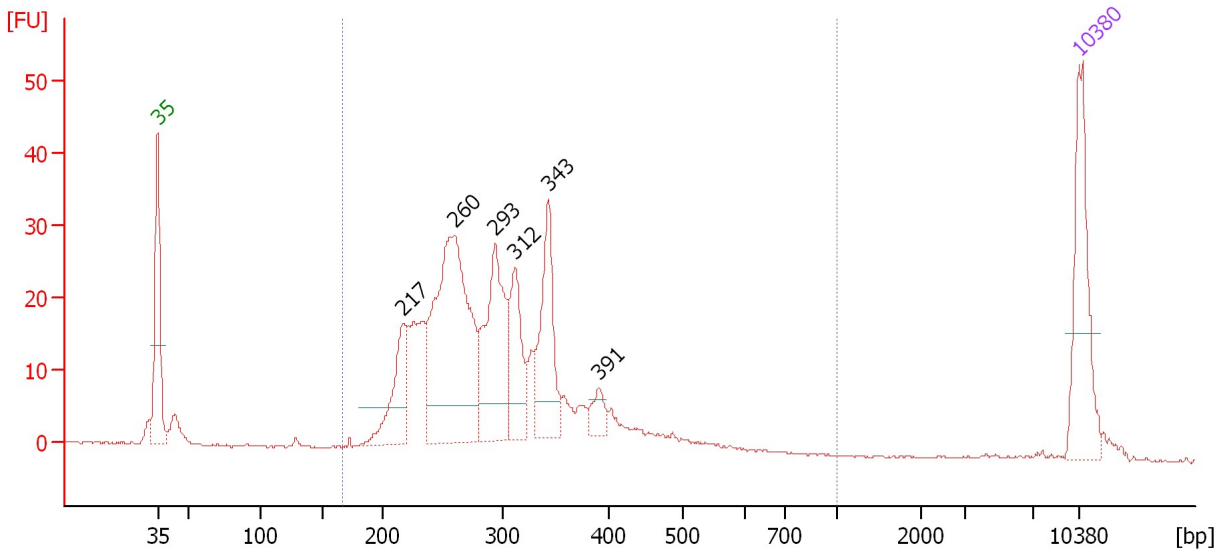
From [bp]	Average Size [bp]	To [bp]	Corr. Area	Molarity [pmol/l]	% of Total	Size distribution in CV [%]	Conc. [pg/μl]	Color
189	356	1,443	1,192.6	8,021.2	98	32.9	1,699.44	Blue

Assay Class: High Sensitivity DNA Assay
 Data Path: C:\...ents and Settings\Bioanalyzer\2015-03-16\2015-03-16_001.xad

Created: 3/16/2015 9:52:35 AM
 Modified: 3/16/2015 10:38:47 AM

Electropherogram Summary Continued ...

20 [Ribo-depleted RNA Libs (TruSeq Stranded on Sciclone)]



Overall Results for sample 6 : 20

Number of peaks found: 6 Corr. Area 1: 465.5
 Noise: 0.2

Peak table for sample 6 : 20

Peak	Size [bp]	Conc. [pg/μl]	Molarity [pmol/l]	Observations	Aligned Migration Time [s]
1	35	125.00	5,411.3	Lower Marker	43.00
2	217	78.26	547.7		61.62
3	260	292.14	1,701.4		65.59
4	293	135.26	699.1		68.59
5	312	72.15	350.6		70.17
6	343	96.60	426.3		72.71
7	391	17.43	67.6		76.52
8	10,380	75.00	10.9	Upper Marker	113.00

Region table for sample 6 : 20

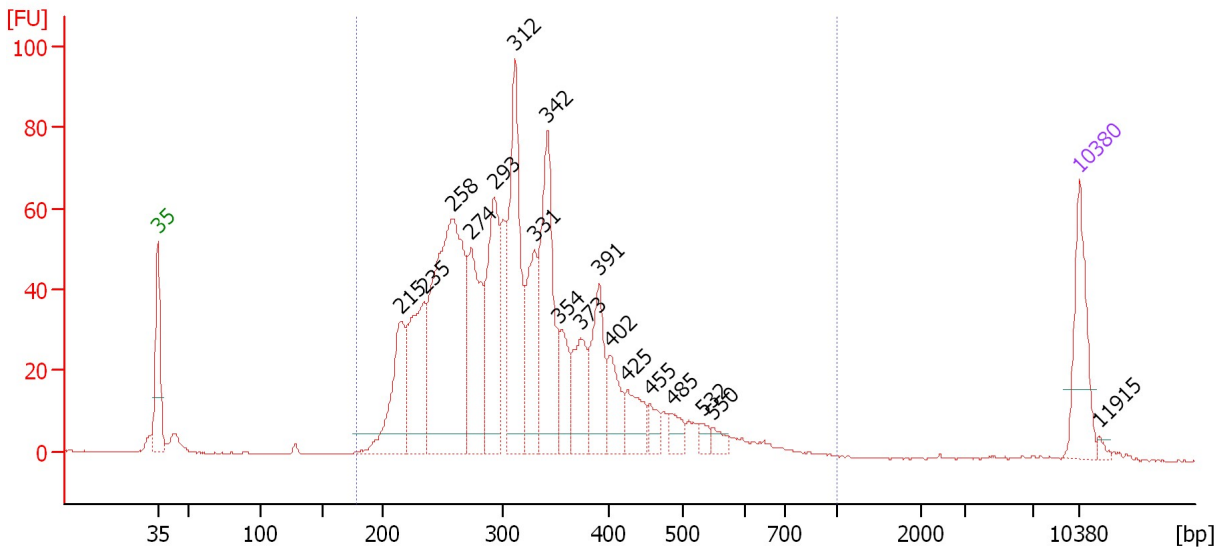
From [bp]	Average Size [bp]	To [bp]	Corr. Area	Molarity [pmol/l]	% of Total	Size distribution in CV [%]	Conc. [pg/μl]	Color
166	302	1,000	465.5	5,082.6	95	24.6	951.72	Blue

Assay Class: High Sensitivity DNA Assay
 Data Path: C:\...ents and Settings\Bioanalyzer\2015-03-16\2015-03-16_001.xad

Created: 3/16/2015 9:52:35 AM
 Modified: 3/16/2015 10:38:47 AM

Electropherogram Summary Continued ...

23 [Ribo-depleted RNA Libs (TruSeq Stranded on Sciclone)]



Overall Results for sample 7 : 23

Number of peaks found: 18 Corr. Area 1: 1,259.0
 Noise: 0.1

Peak table for sample 7 : 23

Peak	Size [bp]	Conc. [pg/μl]	Molarity [pmol/l]	Observations	Aligned Migration Time [s]
1	35	125.00	5,411.3	Lower Marker	43.00
2	215	135.45	953.9		61.49
3	235	164.38	1,059.7		63.30
4	258	464.85	2,732.4		65.37
5	274	169.86	940.4		66.82
6	293	194.12	1,003.9		68.57
7	312	238.73	1,159.5		70.17
8	331	120.90	554.2		71.67
9	342	205.11	908.6		72.60
10	354	62.87	269.4		73.53
11	373	75.64	306.9		75.13
12	391	101.03	391.2		76.58
13	402	54.99	207.1		77.41
14	425	51.42	183.3		78.70
15	455	22.61	75.3		80.40
16	485	23.76	74.2		82.11
17	532	12.65	36.0		84.43
18	550	13.17	36.3		85.26
19	10,380	75.00	10.9	Upper Marker	113.00
20	11,915	0.00	0.0		114.60

Region table for sample 7 : 23

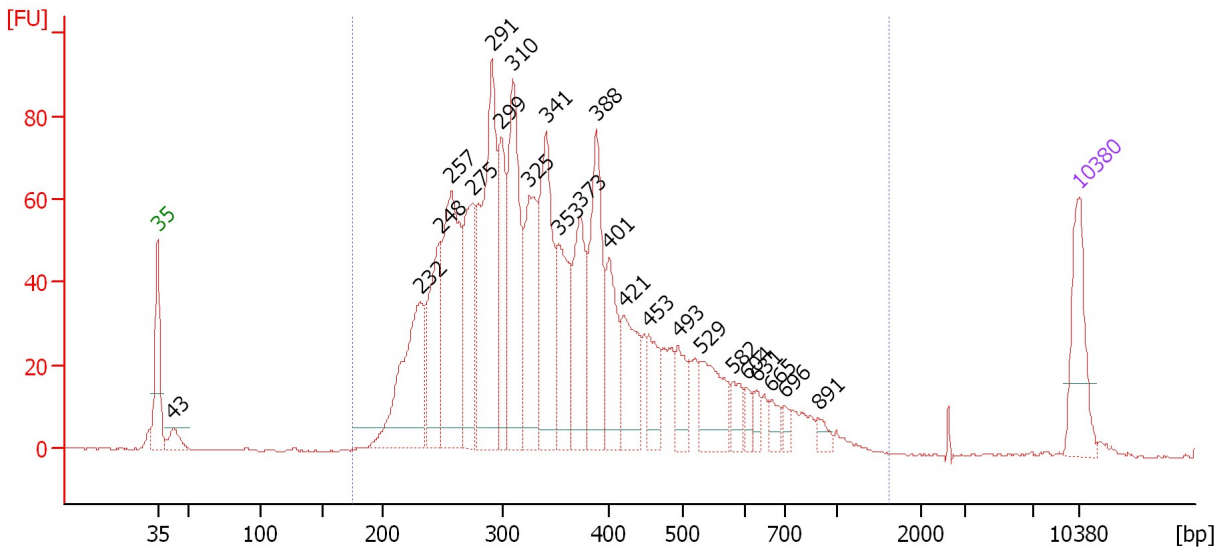
From [bp]	Average Size [bp]	To [bp]	Corr. Area	Molarity [pmol/l]	% of Total	Size distribution in CV [%]	Conc. [pg/μl]	Color
179	326	1,000	1,259.0	11,515.2	98	27.8	2,280.58	Blue

Assay Class: High Sensitivity DNA Assay
 Data Path: C:\...ents and Settings\Bioanalyzer\2015-03-16\2015-03-16_001.xad

Created: 3/16/2015 9:52:35 AM
 Modified: 3/16/2015 10:38:47 AM

Electropherogram Summary Continued ...

49 [Ribo-depleted RNA Libs (TruSeq Stranded on Sciclone)]



Overall Results for sample 8 : 49

Number of peaks found: 24 Corr. Area 1: 1,730.3
 Noise: 0.1

Peak table for sample 8 : 49

Peak	Size [bp]	Conc. [pg/μl]	Molarity [pmol/l]	Observations	Aligned Migration Time [s]
1	35	125.00	5,411.3	Lower Marker	43.00
2	43	27.26	963.1		44.19
3	232	216.99	1,419.4		62.99
4	248	148.52	908.8		64.45
5	257	266.32	1,568.1		65.33
6	275	159.87	880.7		66.94
7	291	303.40	1,579.6		68.39
8	299	128.84	652.8		69.12
9	310	221.17	1,081.6		70.00
10	325	168.28	783.9		71.25
11	341	203.88	906.6		72.50
12	353	120.21	516.0		73.48
13	373	135.15	549.2		75.09
14	388	171.31	668.4		76.34
15	401	95.19	359.9		77.32
16	421	93.21	335.5		78.47
17	453	55.04	184.1		80.28
18	493	47.22	145.0		82.57
19	529	82.33	235.8		84.28
20	582	27.50	71.6		86.72
21	604	16.79	42.1		87.71
22	631	15.96	38.3		88.54
23	665	17.31	39.4		89.63
24	696	12.20	26.5		90.62
25	891	12.25	20.8		93.22

Assay Class: High Sensitivity DNA Assay
 Data Path: C:\...ents and Settings\Bioanalyzer\2015-03-16\2015-03-16_001.xad


Created: 3/16/2015 9:52:35 AM
 Modified: 3/16/2015 10:38:47 AM

Electropherogram Summary Continued ...

... Peak table for sample 8 : 49

Peak	Size [bp]	Conc. [pg/μl]	Molarity [pmol/l]	Observations	Aligned Migration Time [s]
26	10,380	75.00	10.9	Upper Marker	113.00

Region table for sample 8 : 49

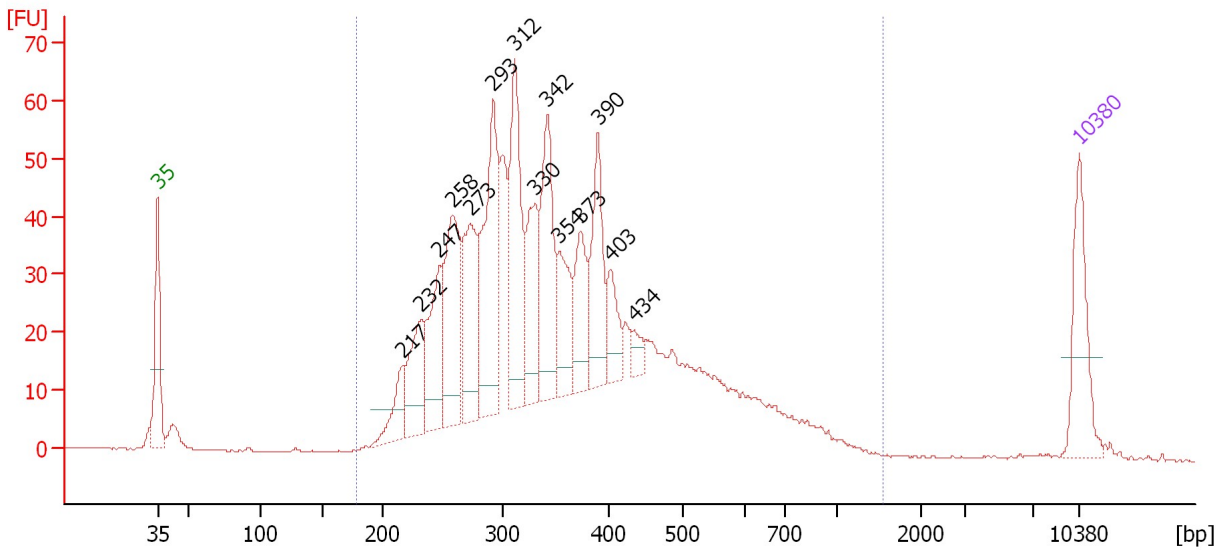
From [bp]	Average Size [bp]	To [bp]	Corr. Area	Molarity [pmol/l]	% of Total	Size distribution in CV [%]	Conc. [pg/μl]	Color
176	375	1,611	1,730.3	14,019.1	98	39.0	3,016.04	

Assay Class: High Sensitivity DNA Assay
 Data Path: C:\...ents and Settings\Bioanalyzer\2015-03-16\2015-03-16_001.xad

Created: 3/16/2015 9:52:35 AM
 Modified: 3/16/2015 10:38:47 AM

Electropherogram Summary Continued ...

64 [Ribo-depleted RNA Libs (TruSeq Stranded on Sciclone)]



Overall Results for sample 9 : 64

Number of peaks found: 14 Corr. Area 1: 1,170.3
 Noise: 0.1

Peak table for sample 9 : 64

Peak	Size [bp]	Conc. [pg/μl]	Molarity [pmol/l]	Observations	Aligned Migration Time [s]
1	35	125.00	5,411.3	Lower Marker	43.00
2	217	49.27	344.7		61.62
3	232	93.01	607.1		63.04
4	247	113.95	698.8		64.40
5	258	161.13	946.2		65.39
6	273	135.86	754.1		66.75
7	293	211.29	1,094.4		68.53
8	312	178.42	867.3		70.15
9	330	104.05	477.0		71.67
10	342	151.85	672.4		72.61
11	354	78.26	335.1		73.55
12	373	75.42	306.2		75.12
13	390	106.87	415.1		76.48
14	403	46.94	176.7		77.42
15	434	19.16	66.9		79.20
16	10,380	75.00	10.9	Upper Marker	113.00

Region table for sample 9 : 64

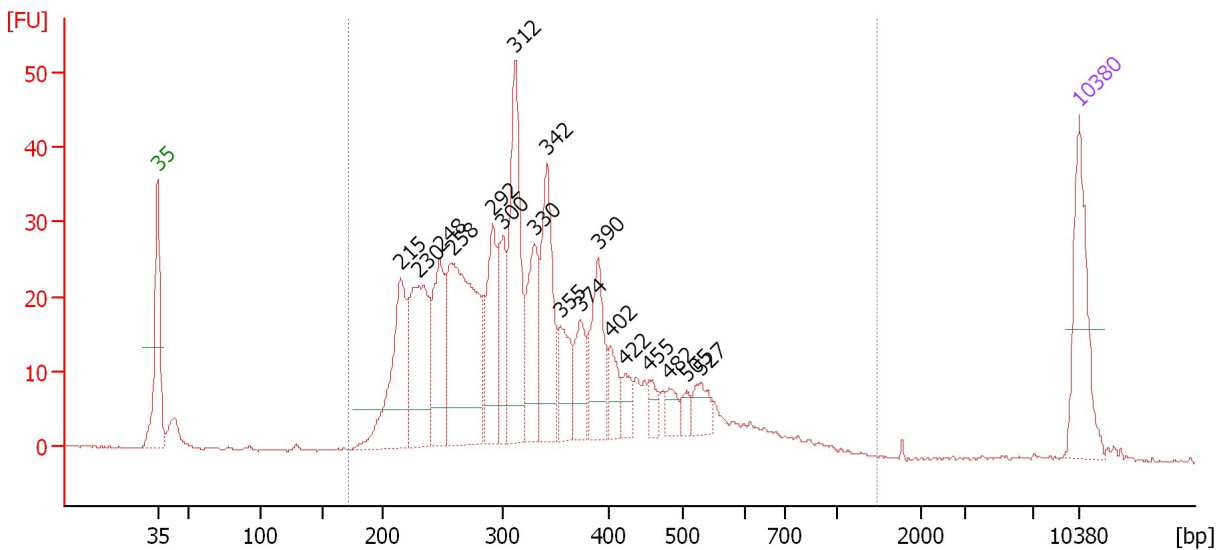
From [bp]	Average Size [bp]	To [bp]	Corr. Area	Molarity [pmol/l]	% of Total	Size distribution in CV [%]	Conc. [pg/μl]	Color
179	374	1,542	1,170.3	11,495.6	98	37.5	2,485.11	Blue

Assay Class: High Sensitivity DNA Assay
 Data Path: C:\...ents and Settings\Bioanalyzer\2015-03-16\2015-03-16_001.xad

Created: 3/16/2015 9:52:35 AM
 Modified: 3/16/2015 10:38:47 AM

Electropherogram Summary Continued ...

68 [Ribo-depleted RNA Libs (TruSeq Stranded on Sciclone)]



Overall Results for sample 10 : 68

Number of peaks found: 18 Corr. Area 1: 707.5
 Noise: 0.1

Peak table for sample 10 : 68

Peak	Size [bp]	Conc. [pg/μl]	Molarity [pmol/l]	Observations	Aligned Migration Time [s]
1	35	125.00	5,411.3	Lower Marker	43.00
2	215	145.61	1,026.5		61.47
3	230	148.56	978.8		62.84
4	248	108.74	664.6		64.47
5	258	255.08	1,499.4		65.37
6	292	93.79	486.8		68.47
7	300	66.86	337.7		69.21
8	312	163.10	792.7		70.16
9	330	89.35	410.2		71.63
10	342	122.43	542.8		72.58
11	355	50.89	217.3		73.63
12	374	47.48	192.5		75.16
13	390	78.52	305.1		76.47
14	402	32.08	121.0		77.37
15	422	19.62	70.4		78.53
16	455	15.53	51.8		80.37
17	482	17.73	55.8		81.89
18	505	12.46	37.4		83.16
19	527	25.90	74.4		84.21
20	10,380	75.00	10.9	Upper Marker	113.00

Region table for sample 10 : 68

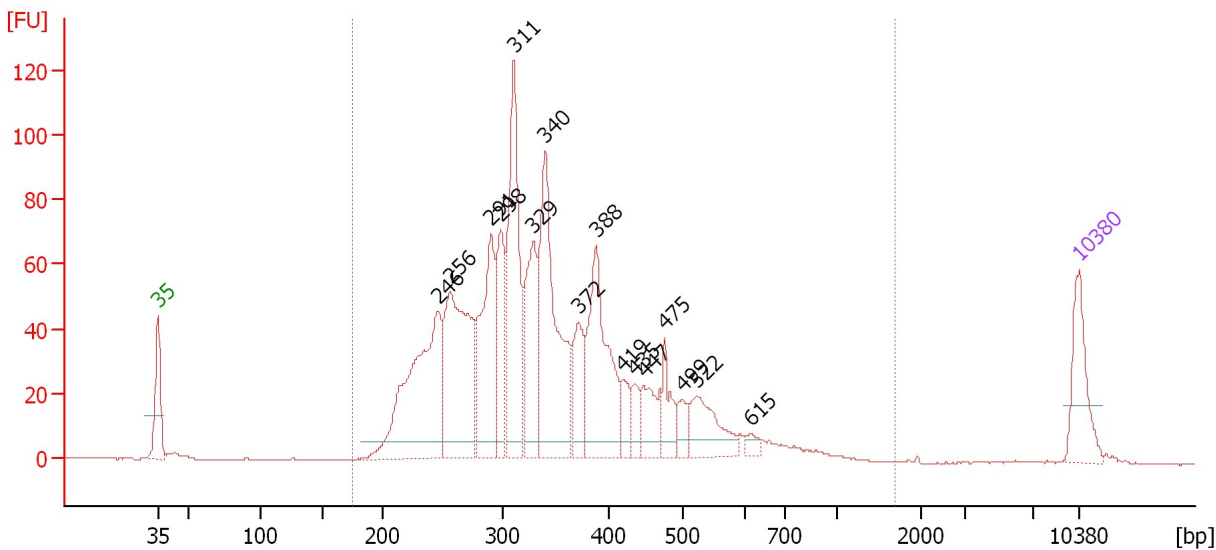
From [bp]	Average Size [bp]	To [bp]	Corr. Area	Molarity [pmol/l]	% of Total	Size distribution in CV [%]	Conc. [pg/μl]	Color
172	346	1,460	707.5	8,659.7	98	35.8	1,748.26	Blue

Assay Class: High Sensitivity DNA Assay
 Data Path: C:\...ents and Settings\Bioanalyzer\2015-03-16\2015-03-16_001.xad

Created: 3/16/2015 9:52:35 AM
 Modified: 3/16/2015 10:38:47 AM

Electropherogram Summary Continued ...

94 (1:3) [Ribo-depleted RNA Libs (TruSeq Stranded on Sciclone)]



Overall Results for sample 11 : 94 (1:3)

Number of peaks found: 16 Corr. Area 1: 1,479.5
 Noise: 0.1

Peak table for sample 11 : 94 (1:3)

Peak	Size [bp]	Conc. [pg/μl]	Molarity [pmol/l]	Observations	Aligned Migration Time [s]
1	35	125.00	5,411.3	Lower Marker	43.00
2	246	385.67	2,372.2		64.33
3	256	346.42	2,048.1		65.23
4	291	224.32	1,168.8		68.37
5	298	135.28	686.9		69.06
6	311	291.34	1,420.7		70.07
7	329	165.48	761.7		71.56
8	340	342.66	1,525.3		72.47
9	372	85.45	348.0		75.02
10	388	247.42	966.6		76.30
11	419	33.70	121.8		78.37
12	435	34.00	118.4		79.28
13	447	62.85	212.8		79.97
14	475	55.88	178.3		81.51
15	499	27.31	82.9		82.89
16	522	92.59	268.8		83.96
17	615	13.77	33.9		88.05
18	10,380	75.00	10.9	Upper Marker	113.00

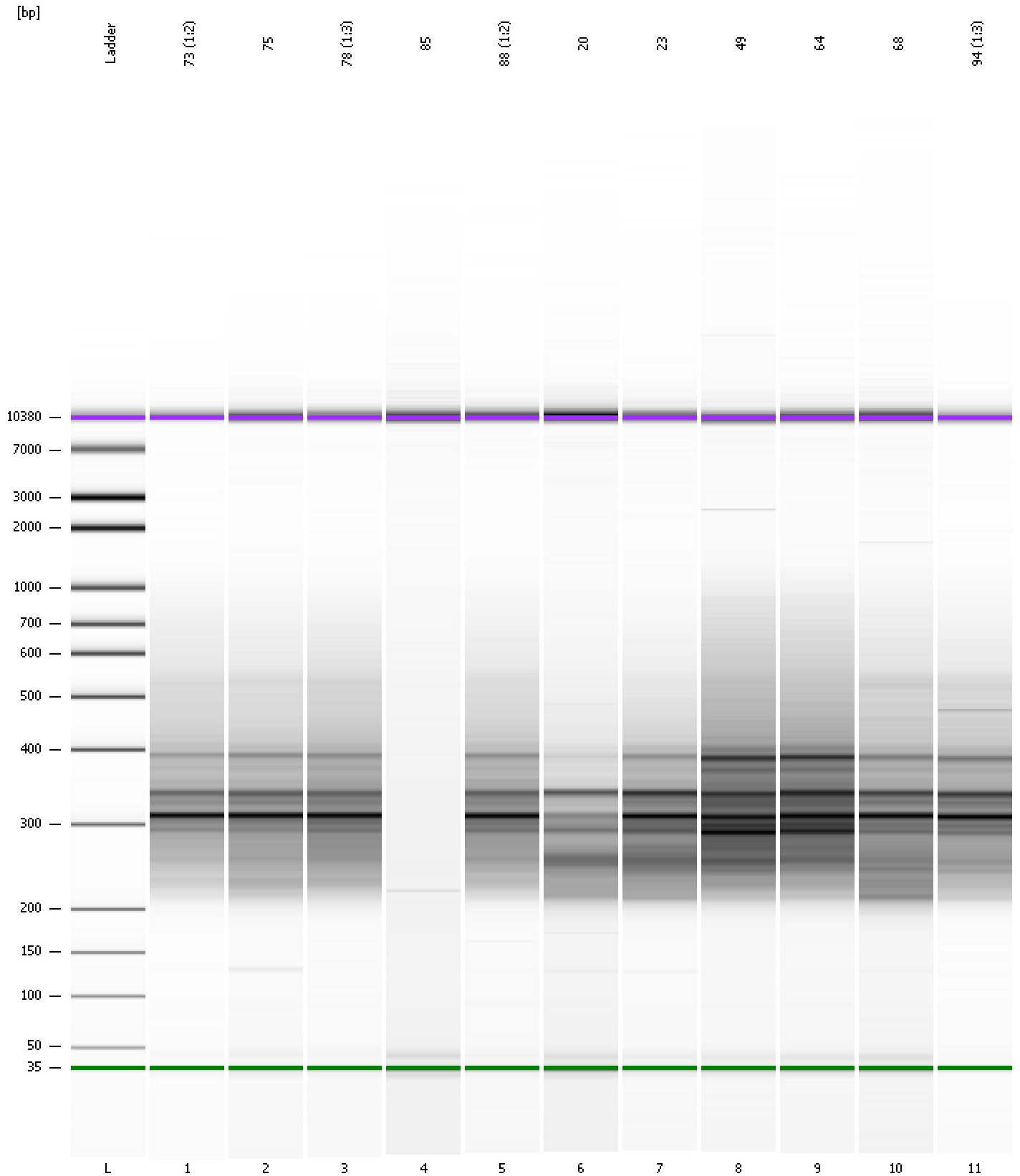
Region table for sample 11 : 94 (1:3)

From [bp]	Average Size [bp]	To [bp]	Corr. Area	Molarity [pmol/l]	% of Total	Size distribution in CV [%]	Conc. [pg/μl]	Color
175	355	1,685	1,479.5	12,824.5	99	33.6	2,697.77	Blue

Assay Class: High Sensitivity DNA Assay
Data Path: C:\...ents and Settings\Bioanalyzer\2015-03-16\2015-03-16_001.xad

Created: 3/16/2015 9:52:35 AM
Modified: 3/16/2015 10:38:47 AM

Gel Image



Assay Class: High Sensitivity DNA Assay
 Data Path: C:\...ents and Settings\Bioanalyzer\2015-03-16\2015-03-16_001.xad

Created: 3/16/2015 9:52:35 AM
 Modified: 3/16/2015 10:38:47 AM

Run Logbook

Description	Number	Source	Category	Sub Category	Time	Time Zone	User	Host
Run ended on port 1 (Number of wells acquired: 12)		Instrument	Run		3/16/2015 10:33:54 AM	(GMT --07:00) Pacific Standard Time	UC Davis	D8XSMGH1
Run started on port 1 (File: C:\Documents and Settings\Bioanalyzer\2015-03-16\2015-03-16_001.xad)		Instrument	Run		3/16/2015 9:52:40 AM	(GMT --07:00) Pacific Standard Time	UC Davis	D8XSMGH1
Product Number : G2938B		Instrument	Run		3/16/2015 9:52:40 AM	(GMT --07:00) Pacific Standard Time	UC Davis	D8XSMGH1
Name :		Instrument	Run		3/16/2015 9:52:40 AM	(GMT --07:00) Pacific Standard Time	UC Davis	D8XSMGH1
Vendor : Agilent Technologies		Instrument	Run		3/16/2015 9:52:40 AM	(GMT --07:00) Pacific Standard Time	UC Davis	D8XSMGH1
Serial# : DE13701086		Instrument	Run		3/16/2015 9:52:40 AM	(GMT --07:00) Pacific Standard Time	UC Davis	D8XSMGH1
Firmware : C.01.069		Instrument	Run		3/16/2015 9:52:40 AM	(GMT --07:00) Pacific Standard Time	UC Davis	D8XSMGH1
Cartridge : Electrode		Instrument	Run		3/16/2015 9:52:40 AM	(GMT --07:00) Pacific Standard Time	UC Davis	D8XSMGH1