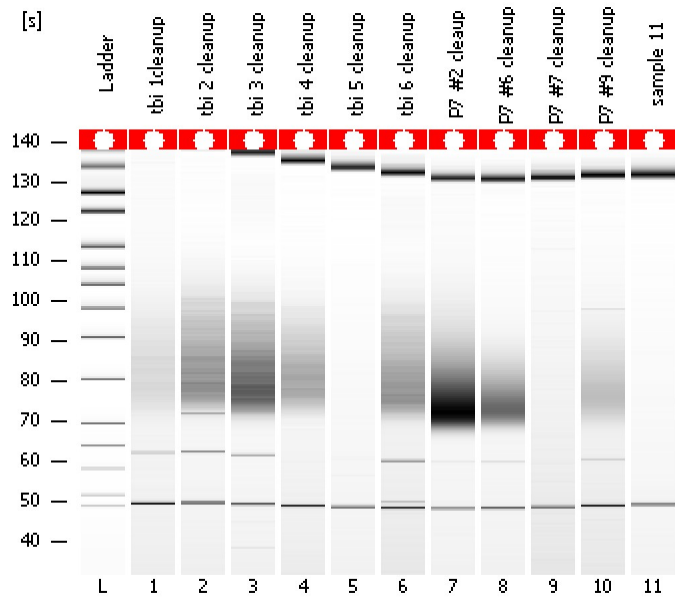


Assay Class: High Sensitivity DNA Assay
Data Path: C:\...ents and Settings\Bioanalyzer\2015-05-08\2015-05-08_003.xad

Created: 5/8/2015 4:32:56 PM
Modified: 5/8/2015 5:49:21 PM

Electrophoresis File Run Summary



Instrument Information:

Instrument Name: DE13701086 Firmware: C.01.069
Serial#: DE13701086 Type: G2938B

Assay Information:

Assay Origin Path: C:\Program Files\Agilent\2100 bioanalyzer\2100 expert\assays\dsDNA\High Sensitivity DNA.xsy
Assay Class: High Sensitivity DNA Assay
Version: 1.03
Assay Comments: Copyright © 2003-2010 Agilent Technologies

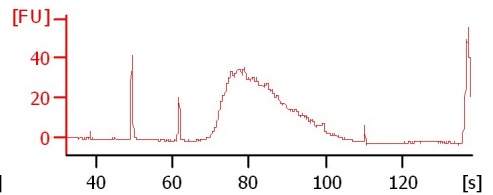
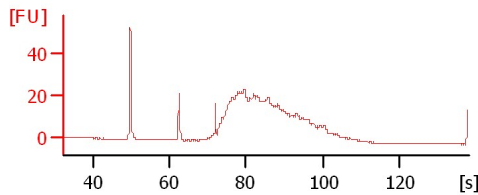
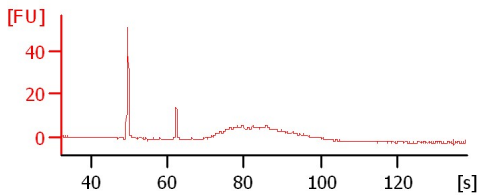
Chip Information:

Chip Lot #: Reagent Kit Lot #: Chip Comments:

tbi 1 cleanup

tbi 2 cleanup

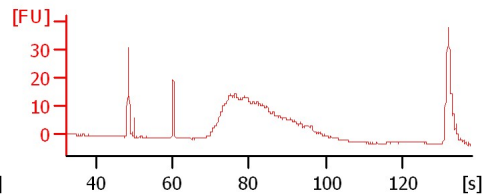
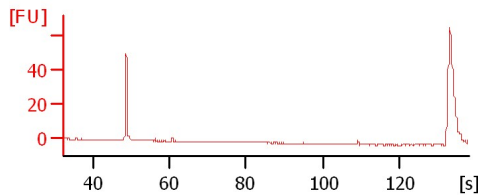
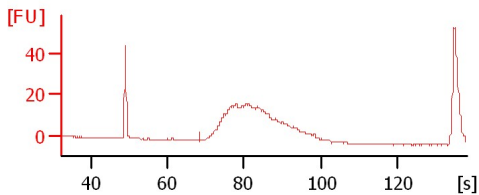
tbi 3 cleanup



tbi 4 cleanup

tbi 5 cleanup

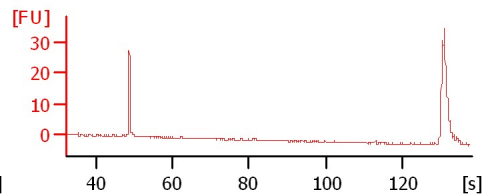
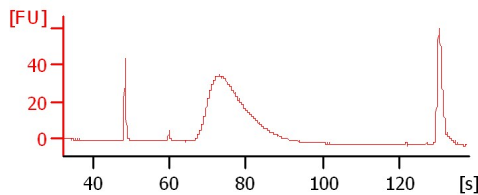
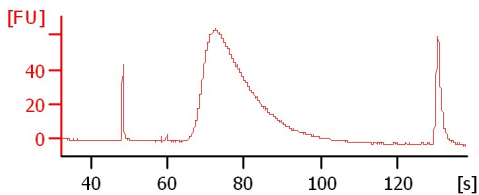
tbi 6 cleanup



P7 #2 cleaup

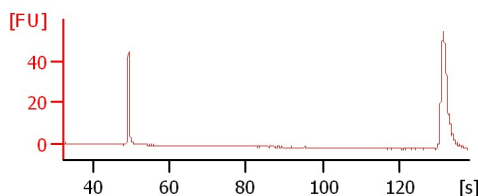
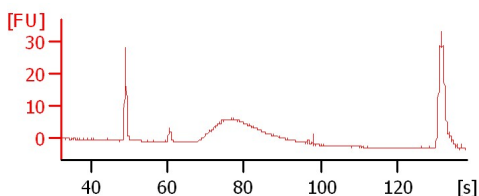
P7 #6 cleanup

P7 #7 cleanup



P7 #9 cleanup

sample 11



Assay Class: High Sensitivity DNA Assay
Data Path: C:\...ents and Settings\Bioanalyzer\2015-05-08\2015-05-08_003.xad

Created: 5/8/2015 4:32:56 PM
Modified: 5/8/2015 5:49:21 PM

Electrophoresis File Run Summary (Chip Summary)

Sample Name	Sample Comment	Rest. Digest	Status	Observation	Result Label	Result Color
tbi 1 cleanup		<input type="checkbox"/>	✓			
tbi 2 cleanup		<input type="checkbox"/>	✓			
tbi 3 cleanup		<input type="checkbox"/>	✓			
tbi 4 cleanup		<input type="checkbox"/>	✓			
tbi 5 cleanup		<input type="checkbox"/>	✓			
tbi 6 cleanup		<input type="checkbox"/>	✓			
P7 #2 cleaup		<input type="checkbox"/>	✓			
P7 #6 cleanup		<input type="checkbox"/>	✓			
P7 #7 cleanup		<input type="checkbox"/>	✓			
P7 #9 cleanup		<input type="checkbox"/>	✓			
sample 11		<input type="checkbox"/>	✓			
Ladder		<input type="checkbox"/>	✓			

Chip Lot #

Reagent Kit Lot #

Chip Comments :

Assay Class: High Sensitivity DNA Assay
Data Path: C:\...ents and Settings\Bioanalyzer\2015-05-08\2015-05-08_003.xad

Created: 5/8/2015 4:32:56 PM
Modified: 5/8/2015 5:49:21 PM

Electrophoresis Assay Details

General Analysis Settings

Number of Available Sample and Ladder Wells (Max.) : 12
Minimum Visible Range [s] : 32
Maximum Visible Range [s] : 138
Start Analysis Time Range [s] : 33
End Analysis Time Range [s] : 137.5
Ladder Concentration [pg/μl] : 1950
Uses Standard Area for Ladder Fragments
Lower Marker Concentration [pg/μl] : 125
Upper Marker Concentration [pg/μl] : 75
Used Upper Marker for Quantitation
Standard Curve Fit is Point to Point
Show Data Aligned to Lower and Upper Marker

Integrator Settings

Integration Start Time [s] : 33.05
Integration End Time [s] : 137
Slope Threshold : 0
Height Threshold [FU] : 0
Area Threshold : 0
Width Threshold [s] : 22
Baseline Plateau [s] : 0

Filter Settings

Filter Width [s] : 0.5
Polynomial Order : 4

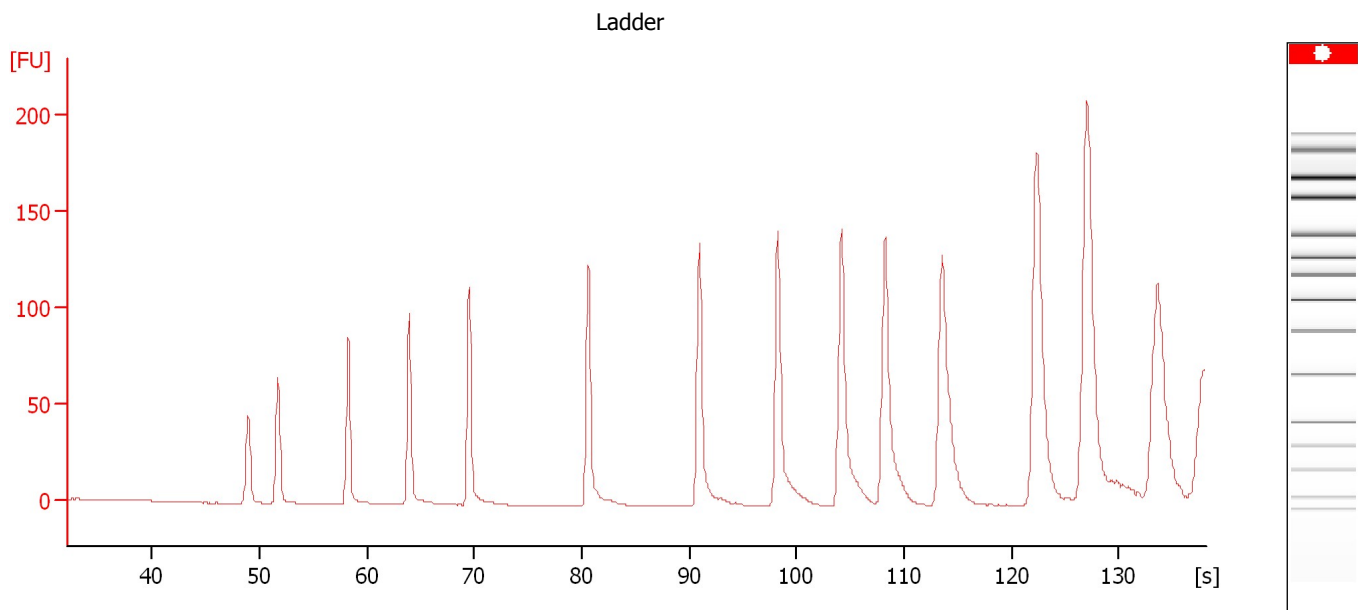
Ladder

Ladder Peak	Size	Area
1	35	160
2	50	210
3	100	208
4	150	221
5	200	242
6	300	270
7	400	305
8	500	306
9	600	336
10	700	321
11	1000	366
12	2000	413
13	3000	411
14	7000	400
15	10380	214

Assay Class: High Sensitivity DNA Assay
Data Path: C:\...ents and Settings\Bioanalyzer\2015-05-08\2015-05-08_003.xad

Created: 5/8/2015 4:32:56 PM
Modified: 5/8/2015 5:49:21 PM

Electropherogram Summary



Overall Results for Ladder

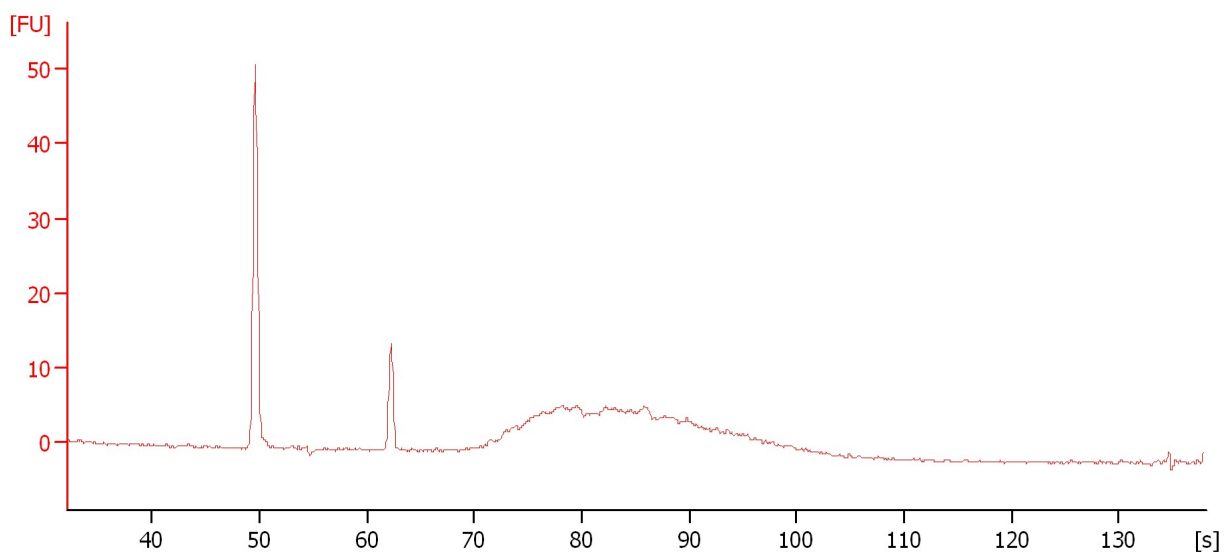
Noise: 0.2

Assay Class: High Sensitivity DNA Assay
Data Path: C:\...ents and Settings\Bioanalyzer\2015-05-08\2015-05-08_003.xad

Created: 5/8/2015 4:32:56 PM
Modified: 5/8/2015 5:49:21 PM

Electropherogram Summary Continued ...

tbi 1cleanup



Overall Results for sample 1 : tbi 1cleanup

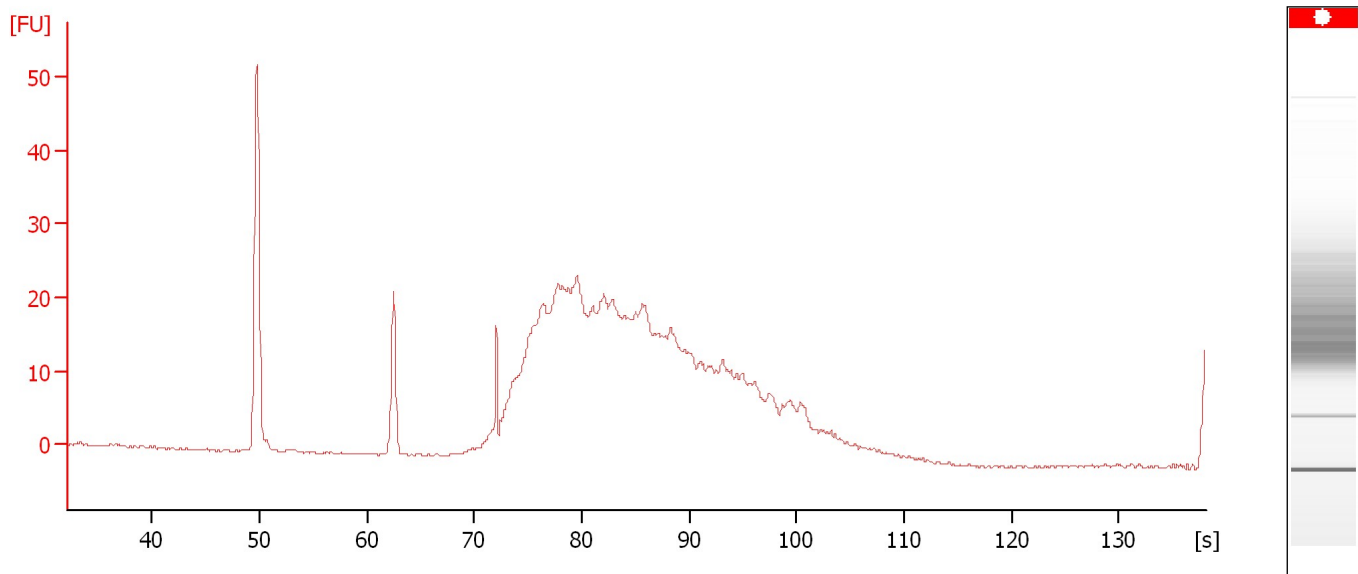
Noise: 0.2

Assay Class: High Sensitivity DNA Assay
Data Path: C:\...ents and Settings\Bioanalyzer\2015-05-08\2015-05-08_003.xad

Created: 5/8/2015 4:32:56 PM
Modified: 5/8/2015 5:49:21 PM

Electropherogram Summary Continued ...

tbi 2 cleanup



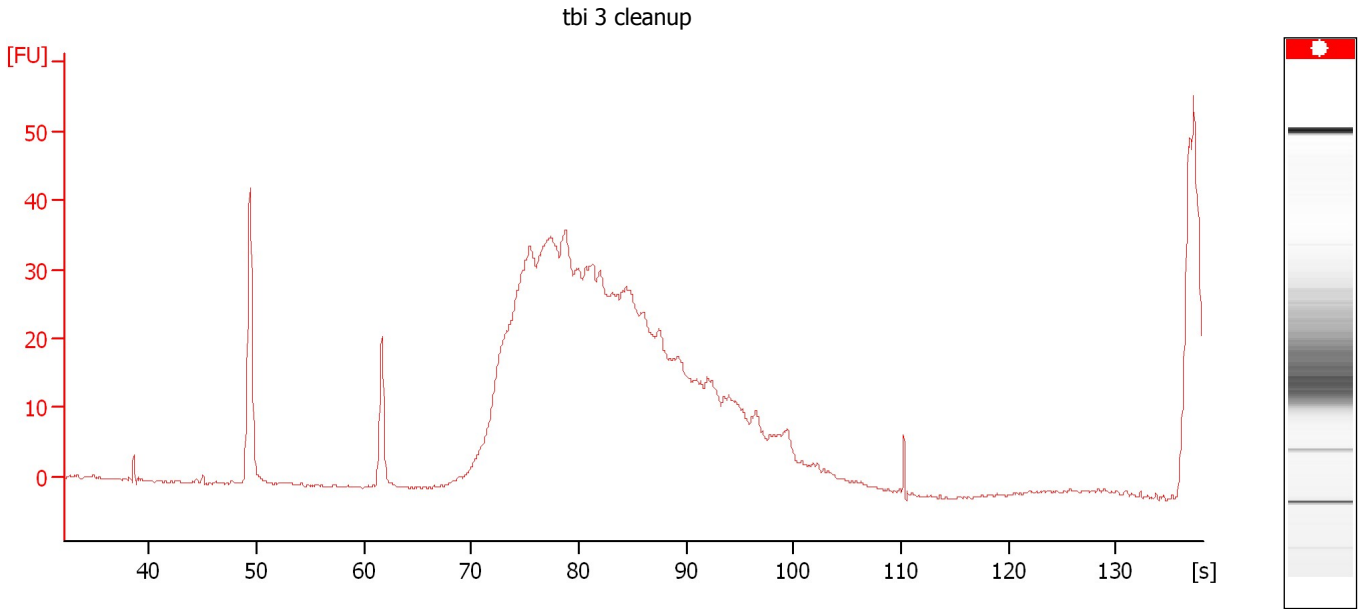
Overall Results for sample 2 : tbi 2 cleanup

Noise: 0.2

Assay Class: High Sensitivity DNA Assay
Data Path: C:\...ents and Settings\Bioanalyzer\2015-05-08\2015-05-08_003.xad

Created: 5/8/2015 4:32:56 PM
Modified: 5/8/2015 5:49:21 PM

Electropherogram Summary Continued ...



Overall Results for sample 3 : tbi 3 cleanup

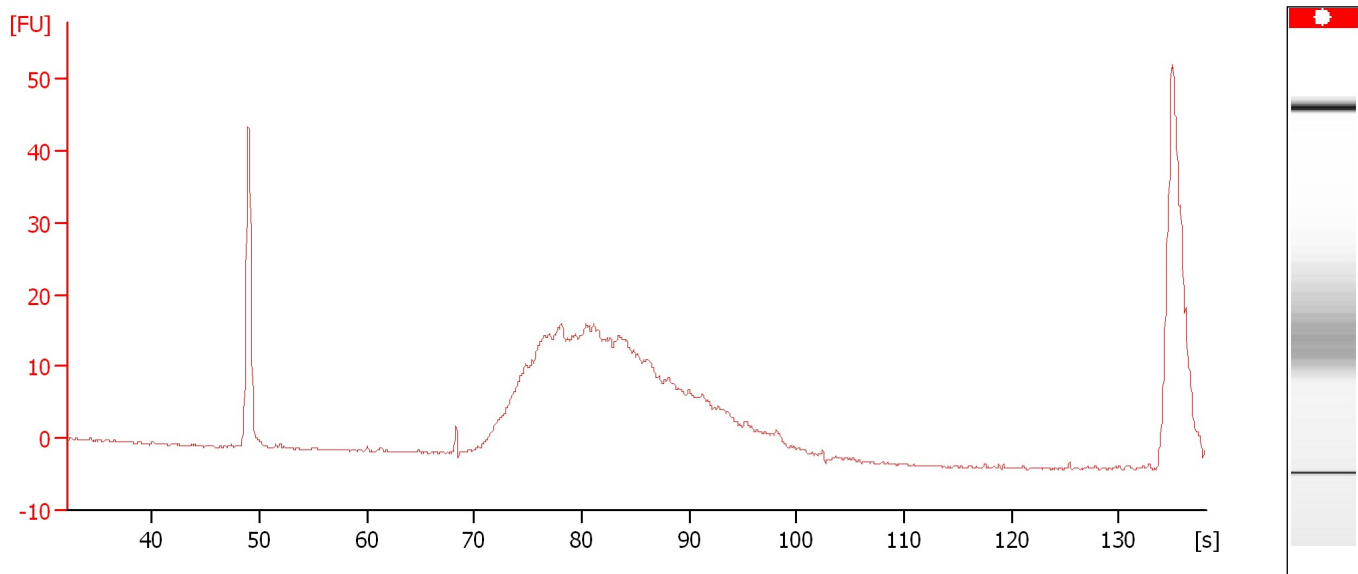
Noise: 0.2

Assay Class: High Sensitivity DNA Assay
Data Path: C:\...ents and Settings\Bioanalyzer\2015-05-08\2015-05-08_003.xad

Created: 5/8/2015 4:32:56 PM
Modified: 5/8/2015 5:49:21 PM

Electropherogram Summary Continued ...

tbi 4 cleanup



Overall Results for sample 4 : tbi 4 cleanup

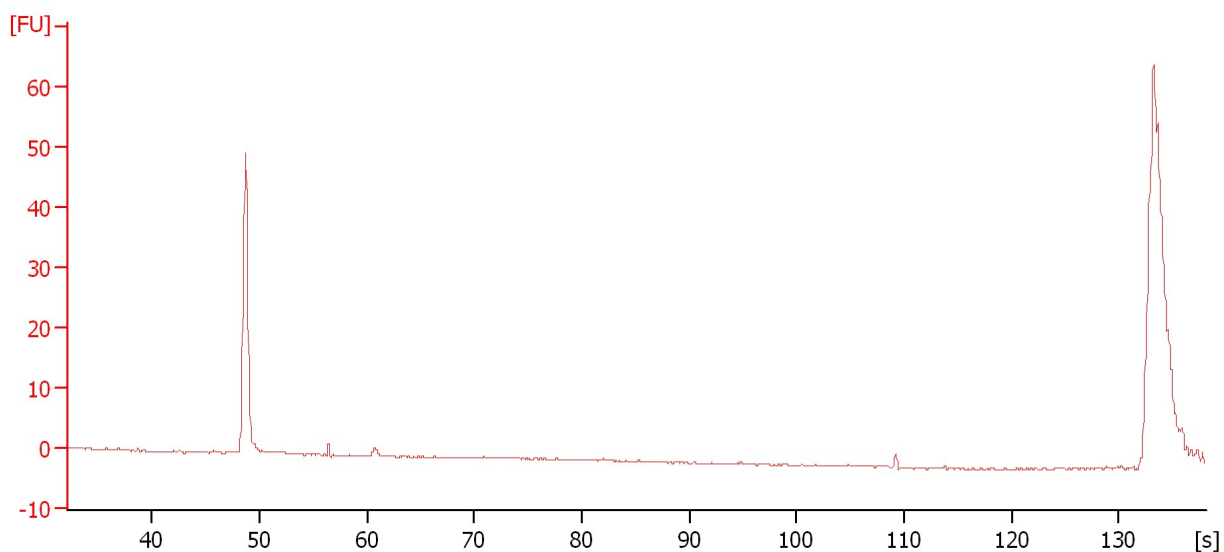
Noise: 0.2

Assay Class: High Sensitivity DNA Assay
Data Path: C:\...ents and Settings\Bioanalyzer\2015-05-08\2015-05-08_003.xad

Created: 5/8/2015 4:32:56 PM
Modified: 5/8/2015 5:49:21 PM

Electropherogram Summary Continued ...

tbi 5 cleanup



Overall Results for sample 5 : tbi 5 cleanup

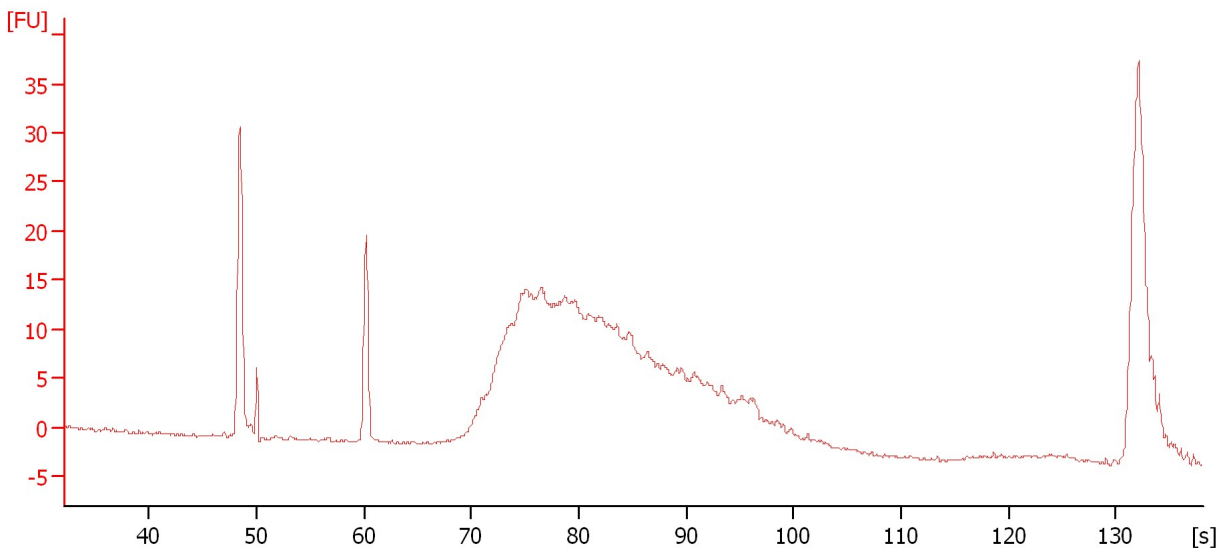
Noise: 0.1

Assay Class: High Sensitivity DNA Assay
Data Path: C:\...ents and Settings\Bioanalyzer\2015-05-08\2015-05-08_003.xad

Created: 5/8/2015 4:32:56 PM
Modified: 5/8/2015 5:49:21 PM

Electropherogram Summary Continued ...

tbi 6 cleanup



Setpoint Deviations for sample 6 : tbi 6 cleanup

Height Threshold [FU] : 5

Overall Results for sample 6 : tbi 6 cleanup

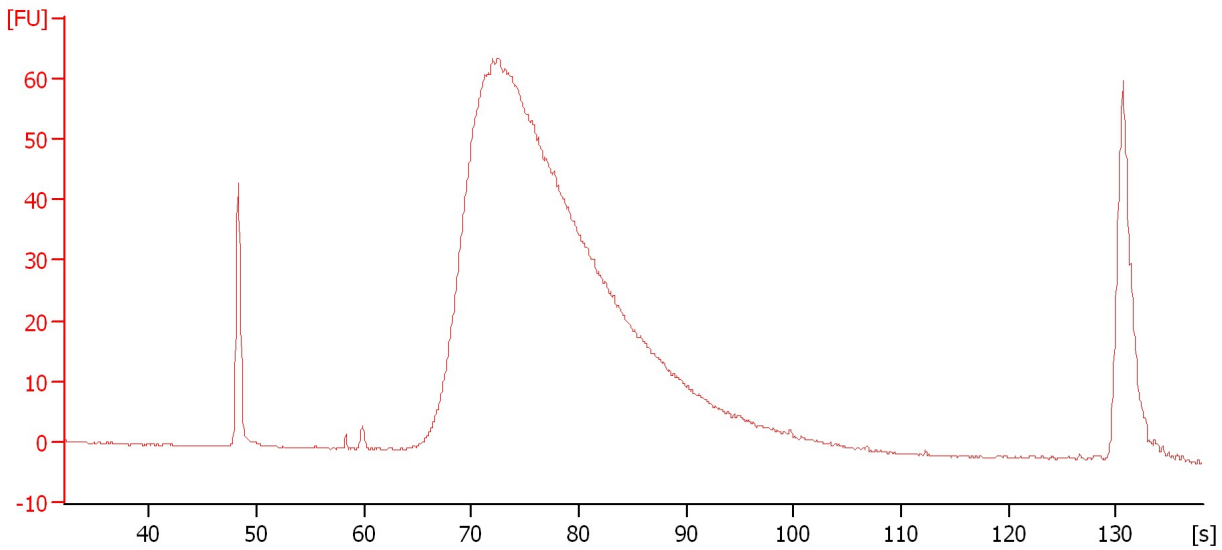
Noise: 0.2

Assay Class: High Sensitivity DNA Assay
Data Path: C:\...ents and Settings\Bioanalyzer\2015-05-08\2015-05-08_003.xad

Created: 5/8/2015 4:32:56 PM
Modified: 5/8/2015 5:49:21 PM

Electropherogram Summary Continued ...

P7 #2 cleaup



Overall Results for sample 7 : P7 #2 cleaup

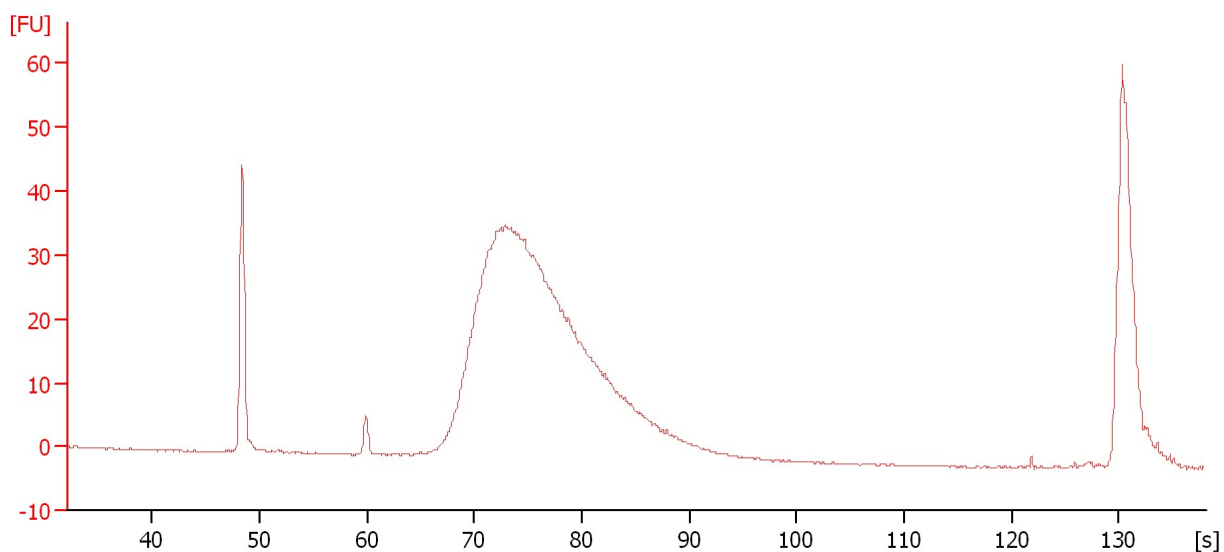
Noise: 0.1

Assay Class: High Sensitivity DNA Assay
Data Path: C:\...ents and Settings\Bioanalyzer\2015-05-08\2015-05-08_003.xad

Created: 5/8/2015 4:32:56 PM
Modified: 5/8/2015 5:49:21 PM

Electropherogram Summary Continued ...

P7 #6 cleanup



Overall Results for sample 8 : P7 #6 cleanup

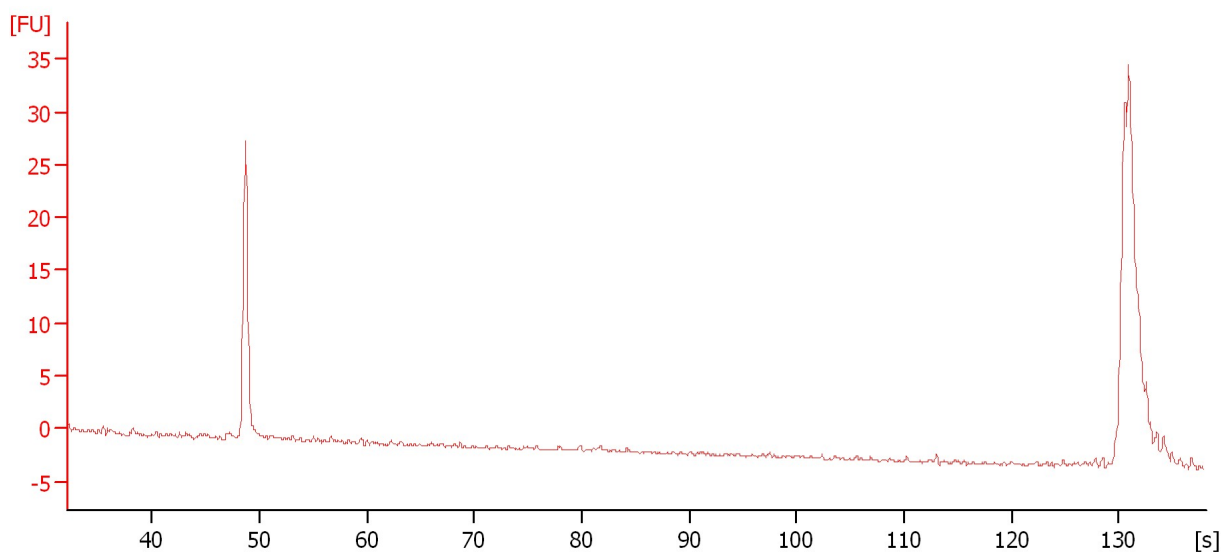
Noise: 0.1

Assay Class: High Sensitivity DNA Assay
Data Path: C:\...ents and Settings\Bioanalyzer\2015-05-08\2015-05-08_003.xad

Created: 5/8/2015 4:32:56 PM
Modified: 5/8/2015 5:49:21 PM

Electropherogram Summary Continued ...

P7 #7 cleanup



Overall Results for sample 9 : P7 #7 cleanup

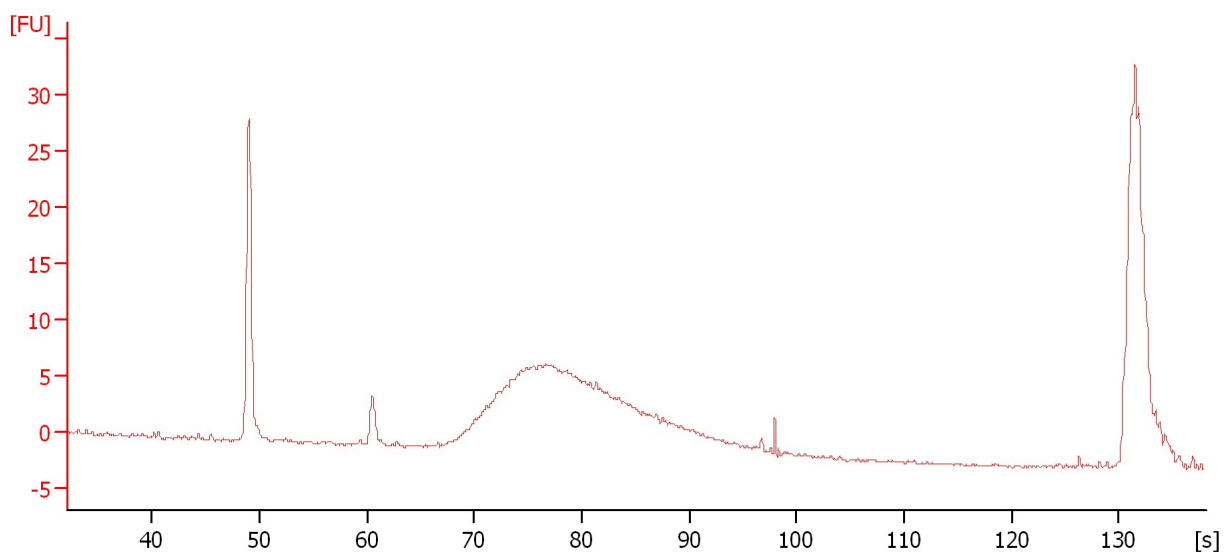
Noise: 0.1

Assay Class: High Sensitivity DNA Assay
Data Path: C:\...ents and Settings\Bioanalyzer\2015-05-08\2015-05-08_003.xad

Created: 5/8/2015 4:32:56 PM
Modified: 5/8/2015 5:49:21 PM

Electropherogram Summary Continued ...

P7 #9 cleanup



Overall Results for sample 10 : P7 #9 cleanup

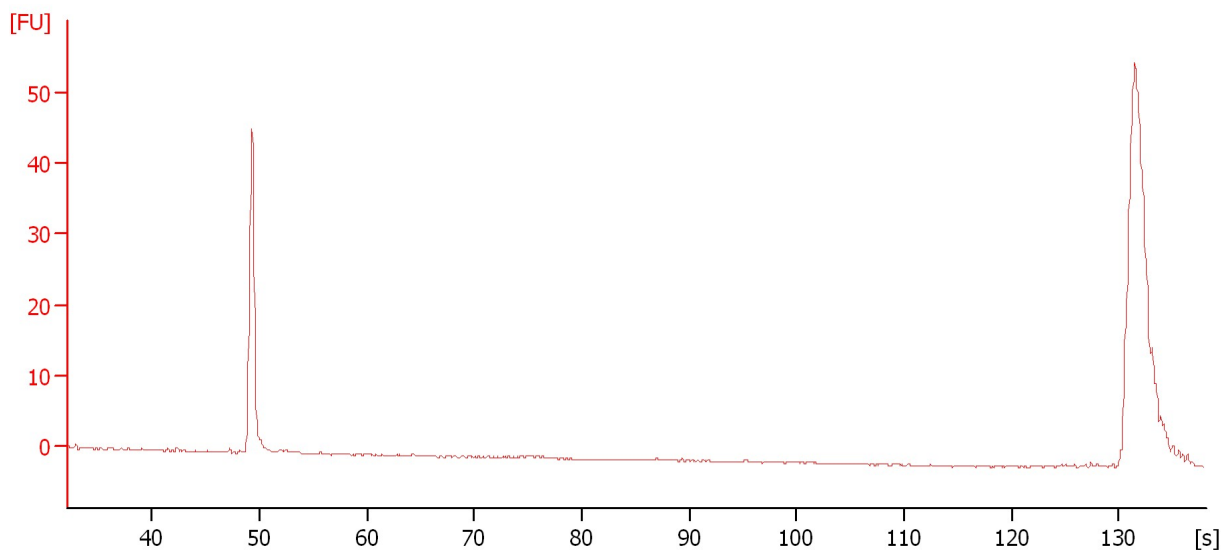
Noise: 0.1

Assay Class: High Sensitivity DNA Assay
Data Path: C:\...ents and Settings\Bioanalyzer\2015-05-08\2015-05-08_003.xad

Created: 5/8/2015 4:32:56 PM
Modified: 5/8/2015 5:49:21 PM

Electropherogram Summary Continued ...

sample 11



Overall Results for sample 11 : sample 11

Noise: 0.1

Assay Class: High Sensitivity DNA Assay
Data Path: C:\...ents and Settings\Bioanalyzer\2015-05-08\2015-05-08_003.xad

Created: 5/8/2015 4:32:56 PM
Modified: 5/8/2015 5:49:21 PM

Gel Image

