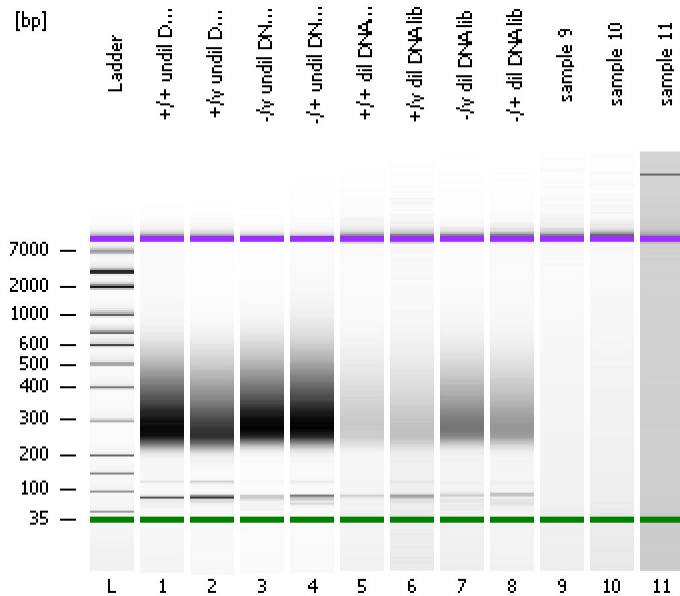


Assay Class: High Sensitivity DNA Assay
Data Path: C:\...ents and Settings\Bioanalyzer\2015-05-13\2015-05-13_002.xad

Created: 5/13/2015 12:33:10 PM
Modified: 5/13/2015 1:14:35 PM

Electrophoresis File Run Summary



Instrument Information:

Instrument Name: DE13701086 Firmware: C.01.069
Serial#: DE13701086 Type: G2938B

Assay Information:

Assay Origin Path: C:\Program Files\Agilent\2100 bioanalyzer\2100 expert\assays\dsDNA\High Sensitivity DNA.xsy
Assay Class: High Sensitivity DNA Assay
Version: 1.03
Assay Comments: Copyright © 2003-2010 Agilent Technologies

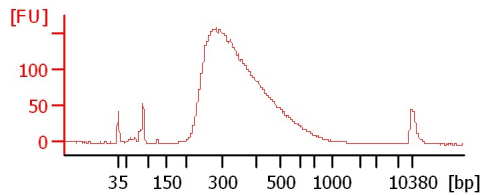
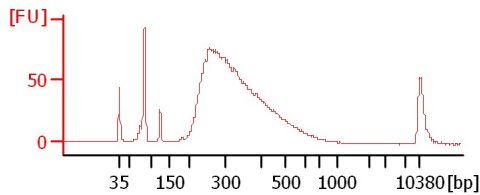
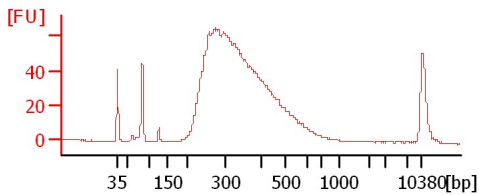
Chip Information:

Chip Lot #:
Reagent Kit Lot #:
Chip Comments:

+/+ undil DNA lib

+/y undil DNA lib

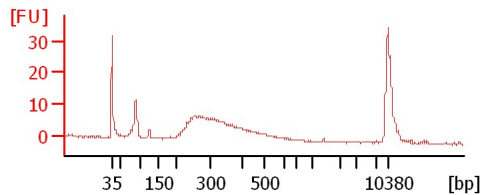
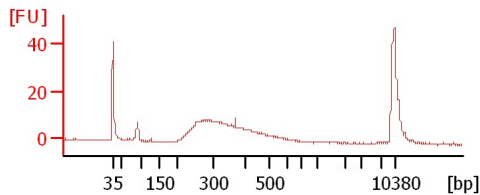
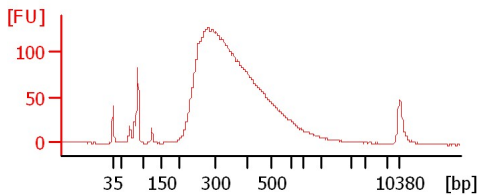
-/y undil DNA lib



-/+ undil DNA lib

+/+ dil DNA lib

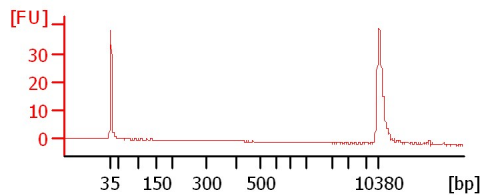
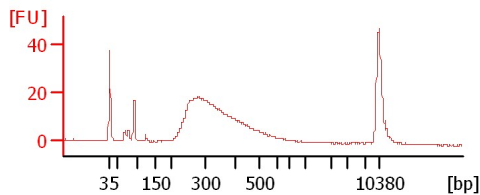
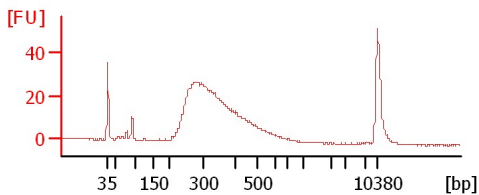
+/y dil DNA lib



-/y dil DNA lib

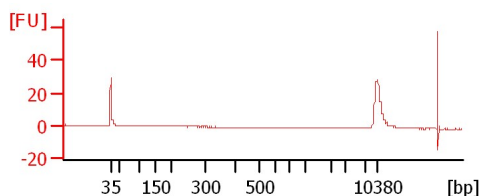
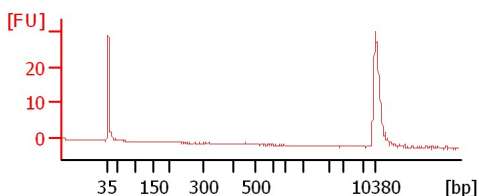
-/+ dil DNA lib

sample 9



sample 10

sample 11



Assay Class: High Sensitivity DNA Assay
Data Path: C:\...ents and Settings\Bioanalyzer\2015-05-13\2015-05-13_002.xad

Created: 5/13/2015 12:33:10 PM
Modified: 5/13/2015 1:14:35 PM

Electrophoresis File Run Summary (Chip Summary)

Sample Name	Sample Comment	Rest. Digest	Status	Observation	Result Label	Result Color
+/+ undil DNA lib		<input type="checkbox"/>	✓			
+/y undil DNA lib		<input type="checkbox"/>	✓			
-/y undil DNA lib		<input type="checkbox"/>	✓			
-/+ undil DNA lib		<input type="checkbox"/>	✓			
+/+ dil DNA lib		<input type="checkbox"/>	✓			
+/y dil DNA lib		<input type="checkbox"/>	✓			
-/y dil DNA lib		<input type="checkbox"/>	✓			
-/+ dil DNA lib		<input type="checkbox"/>	✓			
sample 9		<input type="checkbox"/>	✓			
sample 10		<input type="checkbox"/>	✓			
sample 11		<input type="checkbox"/>	✓			
Ladder		<input type="checkbox"/>	✓			

Chip Lot #

Reagent Kit Lot #

Chip Comments :

Assay Class: High Sensitivity DNA Assay
Data Path: C:\...ents and Settings\Bioanalyzer\2015-05-13\2015-05-13_002.xad

Created: 5/13/2015 12:33:10 PM
Modified: 5/13/2015 1:14:35 PM

Electrophoresis Assay Details

General Analysis Settings

Number of Available Sample and Ladder Wells (Max.) : 12
Minimum Visible Range [s] : 32
Maximum Visible Range [s] : 138
Start Analysis Time Range [s] : 33
End Analysis Time Range [s] : 137.5
Ladder Concentration [pg/μl] : 1950
Uses Standard Area for Ladder Fragments
Lower Marker Concentration [pg/μl] : 125
Upper Marker Concentration [pg/μl] : 75
Used Upper Marker for Quantitation
Standard Curve Fit is Point to Point
Show Data Aligned to Lower and Upper Marker

Integrator Settings

Integration Start Time [s] : 33.05
Integration End Time [s] : 137
Slope Threshold : 0.8
Height Threshold [FU] : 5
Area Threshold : 0.1
Width Threshold [s] : 0.6
Baseline Plateau [s] : 0.5

Filter Settings

Filter Width [s] : 0.5
Polynomial Order : 4

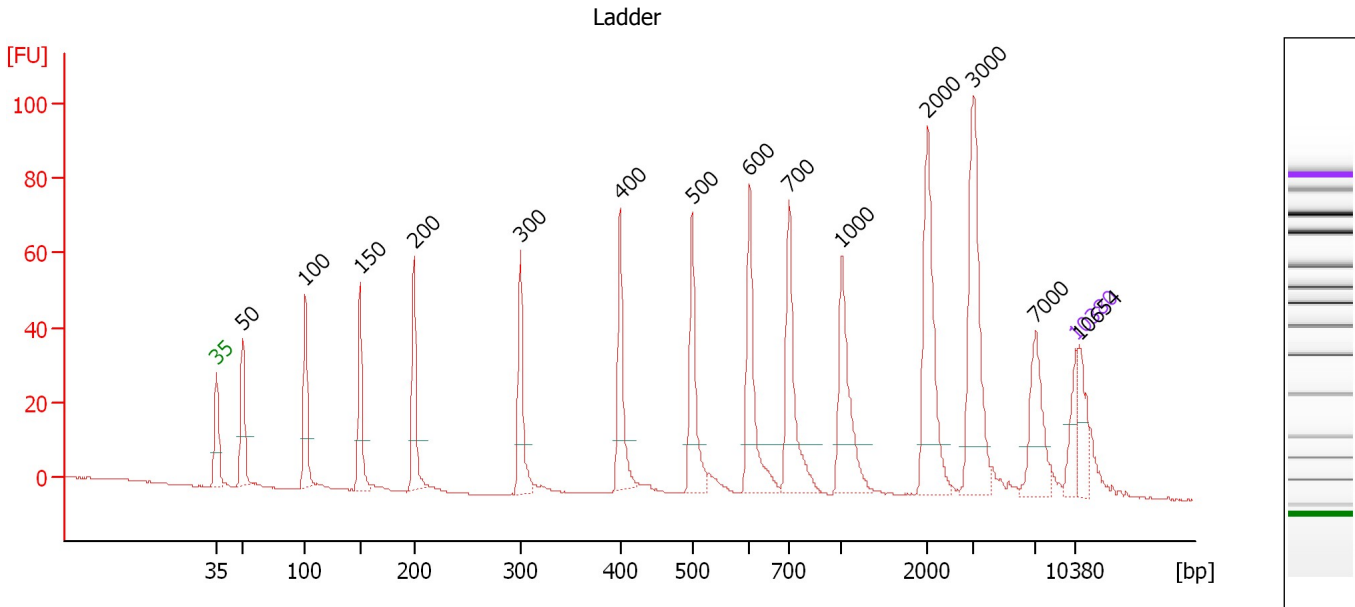
Ladder

Ladder Peak	Size	Area
1	35	160
2	50	210
3	100	208
4	150	221
5	200	242
6	300	270
7	400	305
8	500	306
9	600	336
10	700	321
11	1000	366
12	2000	413
13	3000	411
14	7000	400
15	10380	214

Assay Class: High Sensitivity DNA Assay
 Data Path: C:\...ents and Settings\Bioanalyzer\2015-05-13\2015-05-13_002.xad

Created: 5/13/2015 12:33:10 PM
 Modified: 5/13/2015 1:14:35 PM

Electropherogram Summary



Overall Results for Ladder

Noise: 0.1

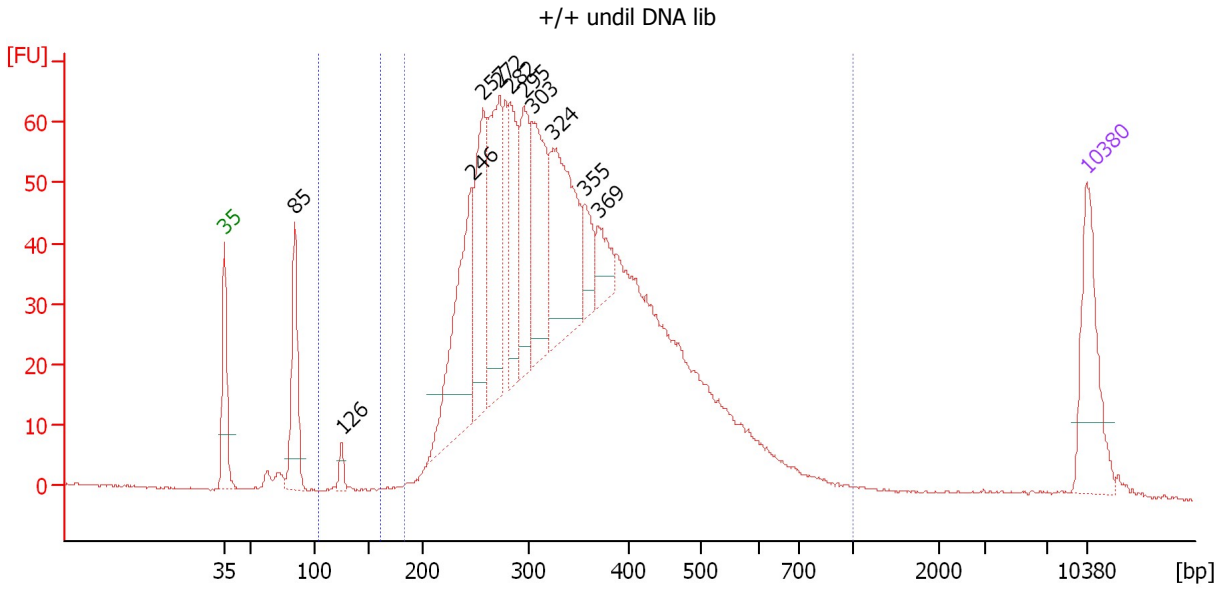
Peak table for Ladder

Peak	Size [bp]	Conc. [pg/μl]	Molarity [pmol/l]	Observations	Aligned Migration Time [s]
1	35	125.00	5,411.3	Lower Marker	43.00
2	50	150.00	4,545.5	Ladder Peak	45.13
3	100	150.00	2,272.7	Ladder Peak	50.26
4	150	150.00	1,515.2	Ladder Peak	54.69
5	200	150.00	1,136.4	Ladder Peak	59.08
6	300	150.00	757.6	Ladder Peak	67.77
7	400	150.00	568.2	Ladder Peak	75.89
8	500	150.00	454.5	Ladder Peak	81.76
9	600	150.00	378.8	Ladder Peak	86.45
10	700	150.00	324.7	Ladder Peak	89.67
11	1,000	150.00	227.3	Ladder Peak	93.97
12	2,000	150.00	113.6	Ladder Peak	100.96
13	3,000	150.00	75.8	Ladder Peak	104.74
14	7,000	150.00	32.5	Ladder Peak	109.78
15	10,380	75.00	10.9	Upper Marker	113.00
16	10,654	0.00	0.0		113.26

Assay Class: High Sensitivity DNA Assay
 Data Path: C:\...ents and Settings\Bioanalyzer\2015-05-13\2015-05-13_002.xad

Created: 5/13/2015 12:33:10 PM
 Modified: 5/13/2015 1:14:35 PM

Electropherogram Summary Continued ...



Overall Results for sample 1 : +/+ undil DNA lib

Number of peaks found: 11 Corr. Area 1: 1,498.1
 Noise: 0.2 Corr. Area 2: 5.9

Peak table for sample 1 : +/+ undil DNA lib

Peak	Size [bp]	Conc. [pg/μl]	Molarity [pmol/l]	Observations	Aligned Migration Time [s]
1	35	125.00	5,411.3	Lower Marker	43.00
2	85	119.20	2,125.8		48.71
3	126	14.02	169.2		52.52
4	246	192.34	1,184.0		63.09
5	257	147.83	872.9		64.00
6	272	168.02	935.8		65.34
7	282	105.29	565.7		66.20
8	295	97.25	499.6		67.33
9	303	139.68	698.1		68.02
10	324	174.79	817.6		69.71
11	355	33.70	143.7		72.26
12	369	35.10	144.0		73.39
13	10,380	75.00	10.9	Upper Marker	113.00

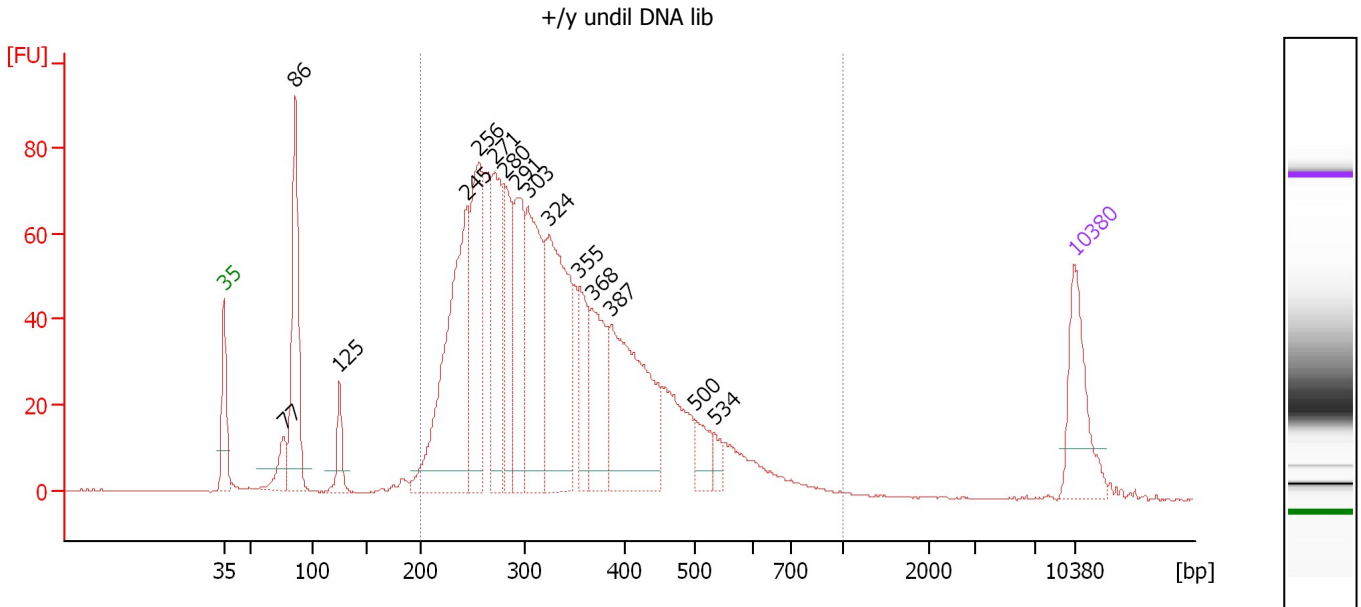
Region table for sample 1 : +/+ undil DNA lib

From [bp]	Average Size [bp]	To [bp]	Corr. Area	Molarity [pmol/l]	% of Total	Size distribution in CV [%]	Conc. [pg/μl]	Color
104	126	161	5.9	152.1	0	1.7	12.61	Blue
184	352	1,000	1,498.1	11,622.1	95	29.7	2,445.52	Dark Blue

Assay Class: High Sensitivity DNA Assay
 Data Path: C:\...ents and Settings\Bioanalyzer\2015-05-13\2015-05-13_002.xad

Created: 5/13/2015 12:33:10 PM
 Modified: 5/13/2015 1:14:35 PM

Electropherogram Summary Continued ...



Overall Results for sample 2 : +/y undil DNA lib

Number of peaks found: 15 Corr. Area 1: 1,636.5
 Noise: 0.2

Peak table for sample 2 : +/y undil DNA lib

Peak	Size [bp]	Conc. [pg/μl]	Molarity [pmol/l]	Observations	Aligned Migration Time [s]
1	35	125.00	5,411.3	Lower Marker	43.00
2	77	44.77	883.9		47.87
3	86	231.81	4,076.6		48.84
4	125	43.23	523.7		52.48
5	245	370.86	2,295.5		62.97
6	256	206.98	1,225.5		63.93
7	271	176.68	987.7		65.25
8	280	128.65	695.9		66.04
9	291	148.70	773.6		67.01
10	303	218.81	1,095.9		67.97
11	324	261.78	1,223.7		69.73
12	355	81.92	349.7		72.23
13	368	121.70	501.2		73.28
14	387	247.19	967.0		74.86
15	500	36.46	110.5		81.75
16	534	14.22	40.4		83.33
17	10,380	75.00	10.9	Upper Marker	113.00

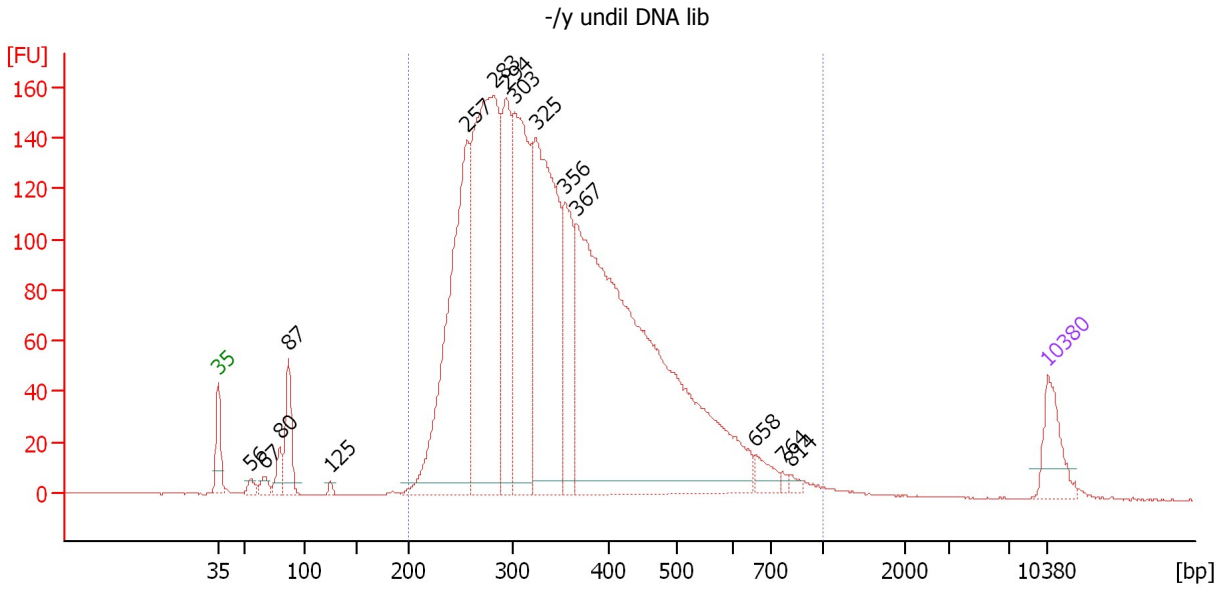
Region table for sample 2 : +/y undil DNA lib

From [bp]	Average Size [bp]	To [bp]	Corr. Area	Molarity [pmol/l]	% of Total	Size distribution in CV [%]	Conc. [pg/μl]	Color
200	341	1,000	1,636.5	11,510.2	89	29.5	2,351.19	Blue

Assay Class: High Sensitivity DNA Assay
 Data Path: C:\...ents and Settings\Bioanalyzer\2015-05-13\2015-05-13_002.xad

Created: 5/13/2015 12:33:10 PM
 Modified: 5/13/2015 1:14:35 PM

Electropherogram Summary Continued ...



Overall Results for sample 3 : -/y undil DNA lib

Number of peaks found: 15 Corr. Area 1: 3,480.3
 Noise: 0.2

Peak table for sample 3 : -/y undil DNA lib

Peak	Size [bp]	Conc. [pg/μl]	Molarity [pmol/l]	Observations	Aligned Migration Time [s]
1	35	125.00	5,411.3	Lower Marker	43.00
2	56	19.43	525.6		45.75
3	67	25.54	577.6		46.87
4	80	50.79	965.4		48.18
5	87	140.37	2,451.8		48.90
6	125	9.73	118.1		52.45
7	257	822.41	4,850.2		64.02
8	283	1,029.80	5,517.1		66.27
9	294	349.00	1,797.4		67.26
10	303	599.33	2,994.8		68.03
11	325	773.58	3,602.2		69.83
12	356	251.18	1,069.5		72.31
13	367	1,763.24	7,269.8		73.25
14	658	39.58	91.1		88.33
15	764	7.49	14.9		90.58
16	814	10.18	18.9		91.30
17	10,380	75.00	10.9	Upper Marker	113.00

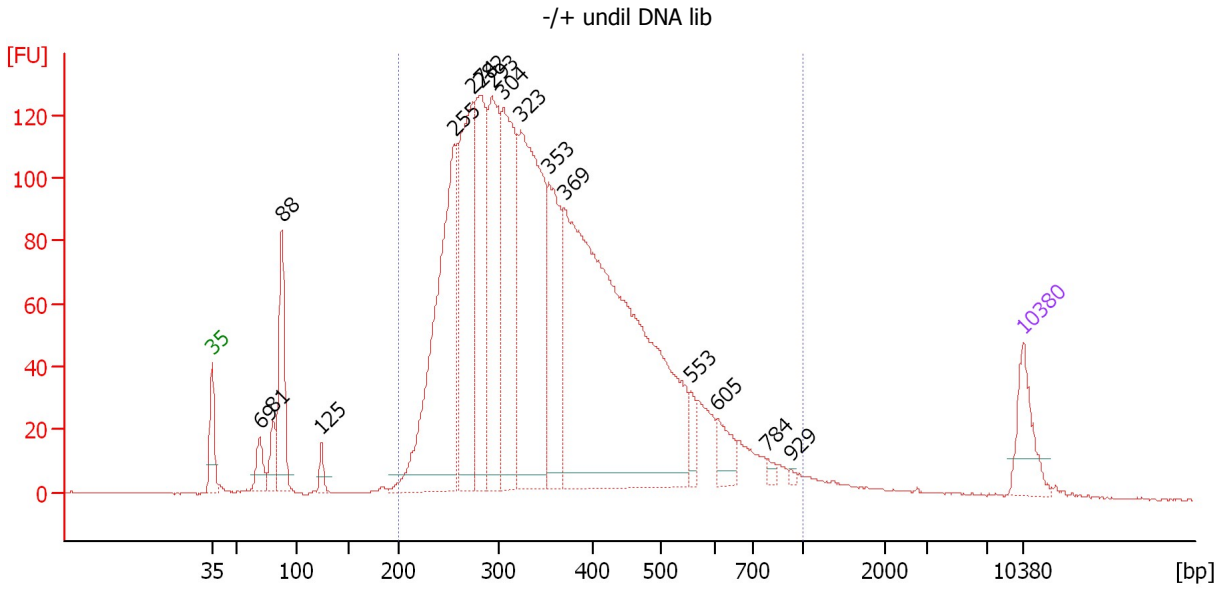
Region table for sample 3 : -/y undil DNA lib

From [bp]	Average Size [bp]	To [bp]	Corr. Area	Molarity [pmol/l]	% of Total	Size distribution in CV [%]	Conc. [pg/μl]	Color
200	361	1,000	3,480.3	25,893.2	96	30.4	5,572.45	Blue

Assay Class: High Sensitivity DNA Assay
 Data Path: C:\...ents and Settings\Bioanalyzer\2015-05-13\2015-05-13_002.xad

Created: 5/13/2015 12:33:10 PM
 Modified: 5/13/2015 1:14:35 PM

Electropherogram Summary Continued ...



Overall Results for sample 4 : -/+ undil DNA lib

Number of peaks found: 16 Corr. Area 1: 2,991.5
 Noise: 0.1

Peak table for sample 4 : -/+ undil DNA lib

Peak	Size [bp]	Conc. [pg/μl]	Molarity [pmol/l]	Observations	Aligned Migration Time [s]
1	35	125.00	5,411.3	Lower Marker	43.00
2	69	60.09	1,316.5		47.09
3	81	62.65	1,174.6		48.29
4	88	241.23	4,153.9		49.02
5	125	30.04	365.5		52.43
6	255	740.64	4,396.0		63.88
7	274	479.39	2,652.8		65.49
8	282	381.52	2,047.9		66.23
9	293	398.81	2,063.3		67.15
10	304	461.36	2,297.6		68.11
11	323	709.23	3,327.7		69.63
12	353	284.24	1,220.3		72.07
13	369	1,516.60	6,231.2		73.35
14	553	32.59	89.2		84.25
15	605	53.31	133.6		86.60
16	784	10.87	21.0		90.88
17	929	4.49	7.3		92.95
18	10,380	75.00	10.9	Upper Marker	113.00

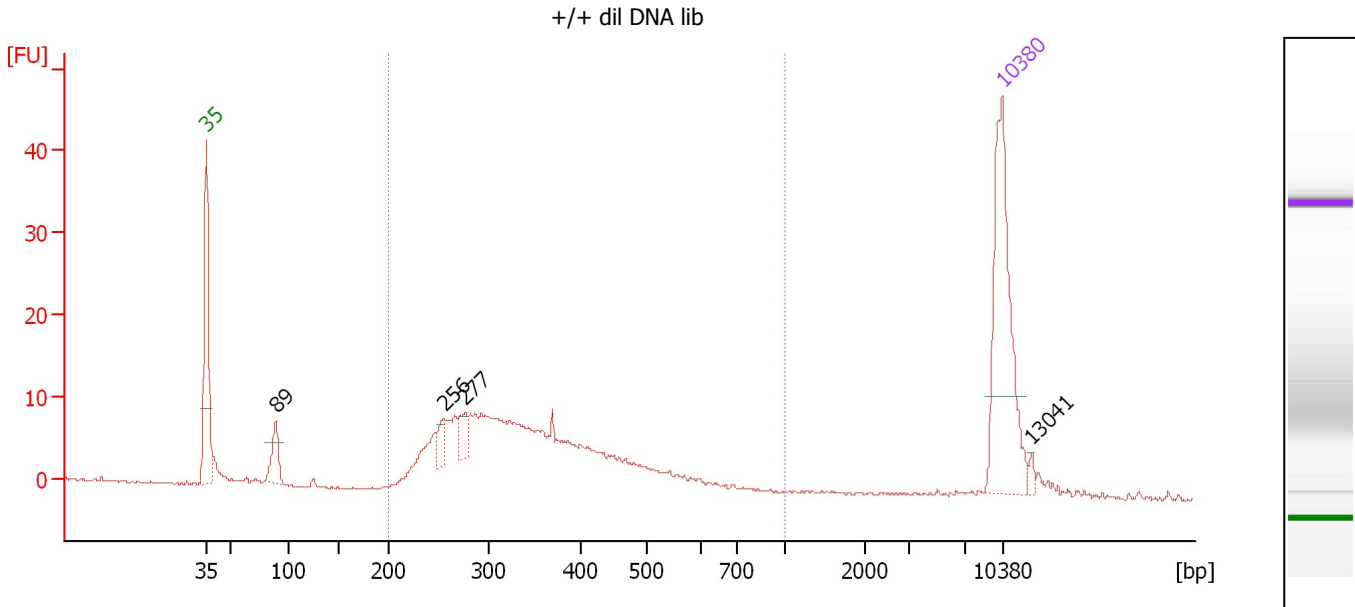
Region table for sample 4 : -/+ undil DNA lib

From [bp]	Average Size [bp]	To [bp]	Corr. Area	Molarity [pmol/l]	% of Total	Size distribution in CV [%]	Conc. [pg/μl]	Color
200	371	1,000	2,991.5	24,473.4	92	32.5	5,338.16	Blue

Assay Class: High Sensitivity DNA Assay
 Data Path: C:\...ents and Settings\Bioanalyzer\2015-05-13\2015-05-13_002.xad

Created: 5/13/2015 12:33:10 PM
 Modified: 5/13/2015 1:14:35 PM

Electropherogram Summary Continued ...



Overall Results for sample 5 : +/+ dil DNA lib

Number of peaks found: 4 Corr. Area 1: 200.3
 Noise: 0.1

Peak table for sample 5 : +/+ dil DNA lib

Peak	Size [bp]	Conc. [pg/μl]	Molarity [pmol/l]	Observations	Aligned Migration Time [s]
1	35	125.00	5,411.3	Lower Marker	43.00
2	89	22.77	389.1		49.10
3	256	11.02	65.3		63.91
4	277	12.47	68.3		65.74
5	10,380	75.00	10.9	Upper Marker	113.00
6	13,041	0.00	0.0		115.53

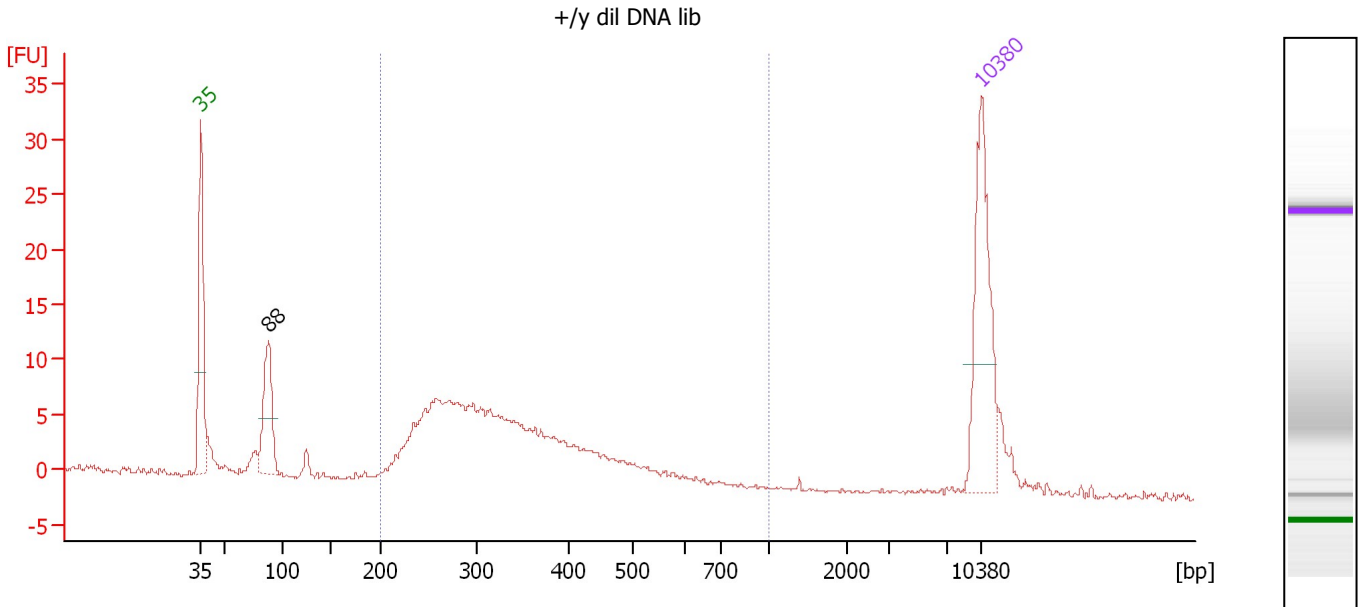
Region table for sample 5 : +/+ dil DNA lib

From [bp]	Average Size [bp]	To [bp]	Corr. Area	Molarity [pmol/l]	% of Total	Size distribution in CV [%]	Conc. [pg/μl]	Color
200	355	1,000	200.3	1,515.9	88	27.9	323.70	Blue

Assay Class: High Sensitivity DNA Assay
 Data Path: C:\...ents and Settings\Bioanalyzer\2015-05-13\2015-05-13_002.xad

Created: 5/13/2015 12:33:10 PM
 Modified: 5/13/2015 1:14:35 PM

Electropherogram Summary Continued ...



Overall Results for sample 6 : +/y dil DNA lib

Number of peaks found: 1 Corr. Area 1: 144.3
 Noise: 0.2

Peak table for sample 6 : +/y dil DNA lib

Peak	Size [bp]	Conc. [pg/μl]	Molarity [pmol/l]	Observations	Aligned Migration Time [s]
1	35	125.00	5,411.3	Lower Marker	43.00
2	88	70.27	1,204.2		49.07
3	10,380	75.00	10.9	Upper Marker	113.00

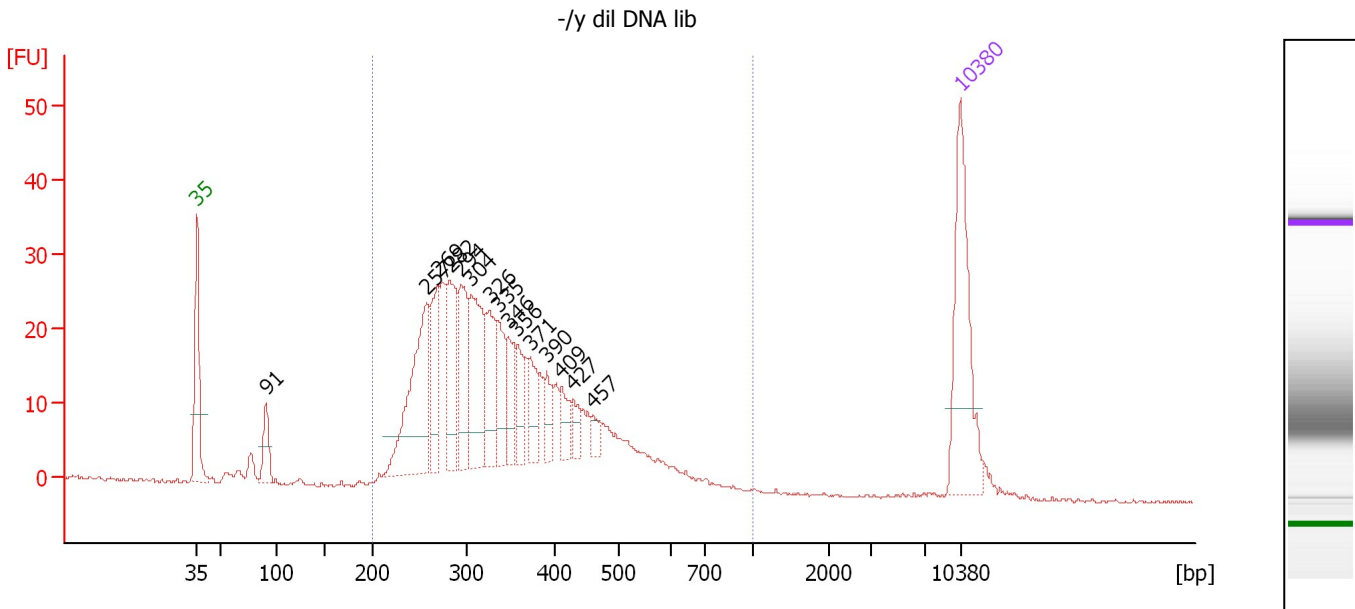
Region table for sample 6 : +/y dil DNA lib

From [bp]	Average Size [bp]	To [bp]	Corr. Area	Molarity [pmol/l]	% of Total	Size distribution in CV [%]	Conc. [pg/μl]	Color
200	336	1,000	144.3	1,694.2	78	25.7	346.60	Blue

Assay Class: High Sensitivity DNA Assay
 Data Path: C:\...ents and Settings\Bioanalyzer\2015-05-13\2015-05-13_002.xad

Created: 5/13/2015 12:33:10 PM
 Modified: 5/13/2015 1:14:35 PM

Electropherogram Summary Continued ...



Overall Results for sample 7 : -/y dil DNA lib

Number of peaks found: 15 Corr. Area 1: 554.1
 Noise: 0.2

Peak table for sample 7 : -/y dil DNA lib

Peak	Size [bp]	Conc. [pg/μl]	Molarity [pmol/l]	Observations	Aligned Migration Time [s]
1	35	125.00	5,411.3	Lower Marker	43.00
2	91	28.35	473.2		49.31
3	257	124.11	731.6		64.03
4	269	53.94	303.3		65.11
5	282	64.25	345.4		66.19
6	294	60.38	311.0		67.26
7	304	81.33	405.3		68.09
8	326	49.59	230.7		69.86
9	335	35.38	160.1		70.59
10	346	27.58	120.7		71.52
11	356	24.69	105.0		72.35
12	371	24.88	101.7		73.52
13	390	16.58	64.4		75.09
14	409	15.85	58.8		76.41
15	427	10.43	37.0		77.49
16	457	8.02	26.6		79.25
17	10,380	75.00	10.9	Upper Marker	113.00

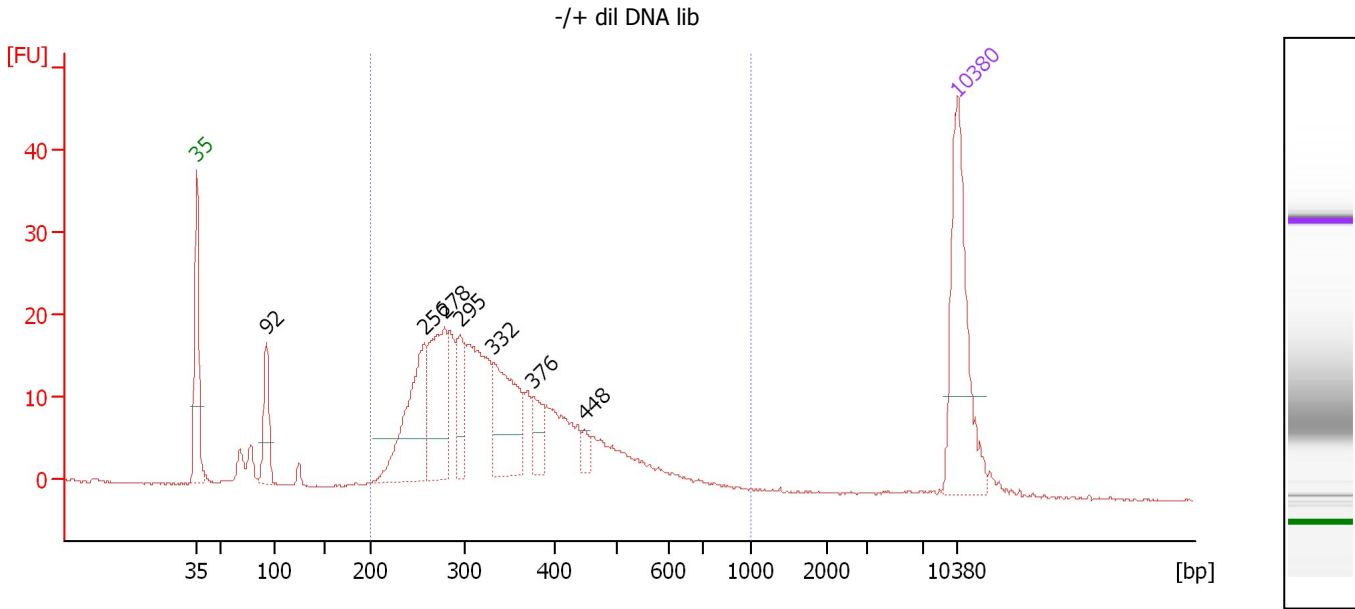
Region table for sample 7 : -/y dil DNA lib

From [bp]	Average Size [bp]	To [bp]	Corr. Area	Molarity [pmol/l]	% of Total	Size distribution in CV [%]	Conc. [pg/μl]	Color
200	351	1,000	554.1	4,320.6	95	27.8	918.24	Blue

Assay Class: High Sensitivity DNA Assay
 Data Path: C:\...ents and Settings\Bioanalyzer\2015-05-13\2015-05-13_002.xad

Created: 5/13/2015 12:33:10 PM
 Modified: 5/13/2015 1:14:35 PM

Electropherogram Summary Continued ...



Overall Results for sample 8 : -/+ dil DNA lib

Number of peaks found: 7 Corr. Area 1: 380.6
 Noise: 0.1

Peak table for sample 8 : -/+ dil DNA lib

Peak	Size [bp]	Conc. [pg/μl]	Molarity [pmol/l]	Observations	Aligned Migration Time [s]
1	35	125.00	5,411.3	Lower Marker	43.00
2	92	42.32	697.4		49.43
3	256	95.50	564.8		63.96
4	278	83.36	453.9		65.88
5	295	32.97	169.6		67.30
6	332	71.80	328.0		70.34
7	376	22.05	88.8		73.97
8	448	7.05	23.9		78.69
9	10,380	75.00	10.9	Upper Marker	113.00

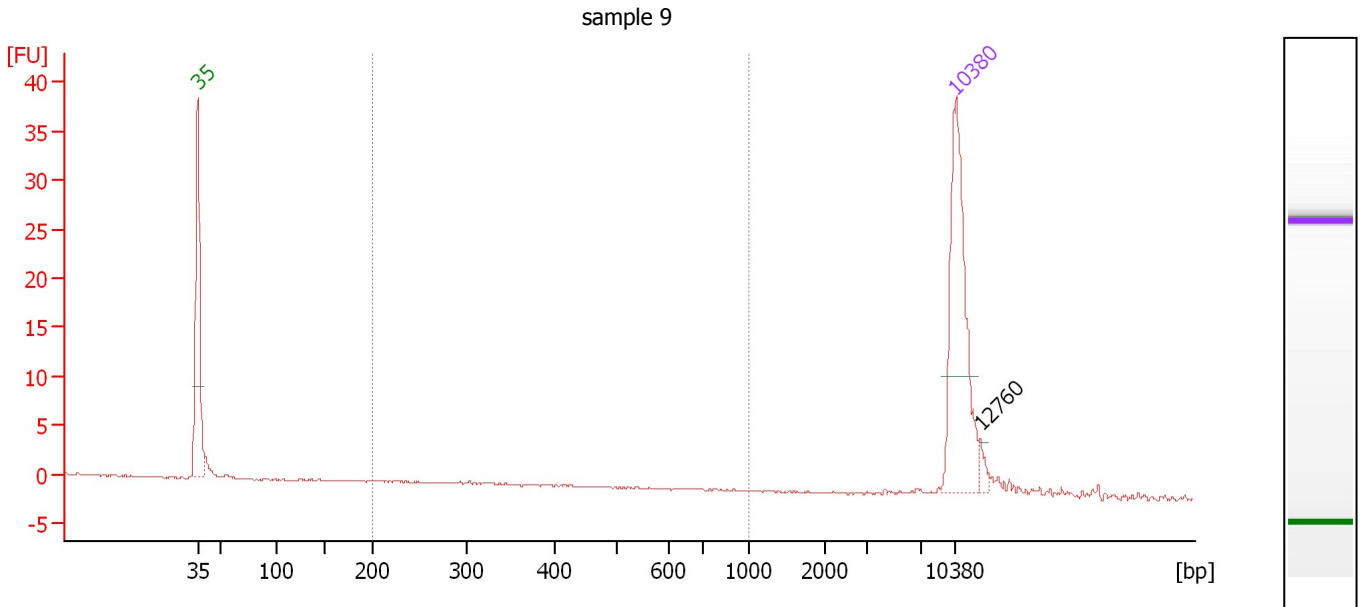
Region table for sample 8 : -/+ dil DNA lib

From [bp]	Average Size [bp]	To [bp]	Corr. Area	Molarity [pmol/l]	% of Total	Size distribution in CV [%]	Conc. [pg/μl]	Color
200	351	1,000	380.6	2,915.3	91	29.1	615.36	Blue

Assay Class: High Sensitivity DNA Assay
 Data Path: C:\...ents and Settings\Bioanalyzer\2015-05-13\2015-05-13_002.xad

Created: 5/13/2015 12:33:10 PM
 Modified: 5/13/2015 1:14:35 PM

Electropherogram Summary Continued ...



Overall Results for sample 9 : sample 9

Number of peaks found: 1 Corr. Area 1: 1.0
 Noise: 0.1

Peak table for sample 9 : sample 9

Peak	Size [bp]	Conc. [pg/μl]	Molarity [pmol/l]	Observations	Aligned Migration Time [s]
1	35	125.00	5,411.3	Lower Marker	43.00
2	10,380	75.00	10.9	Upper Marker	113.00
3	12,760	0.00	0.0		115.26

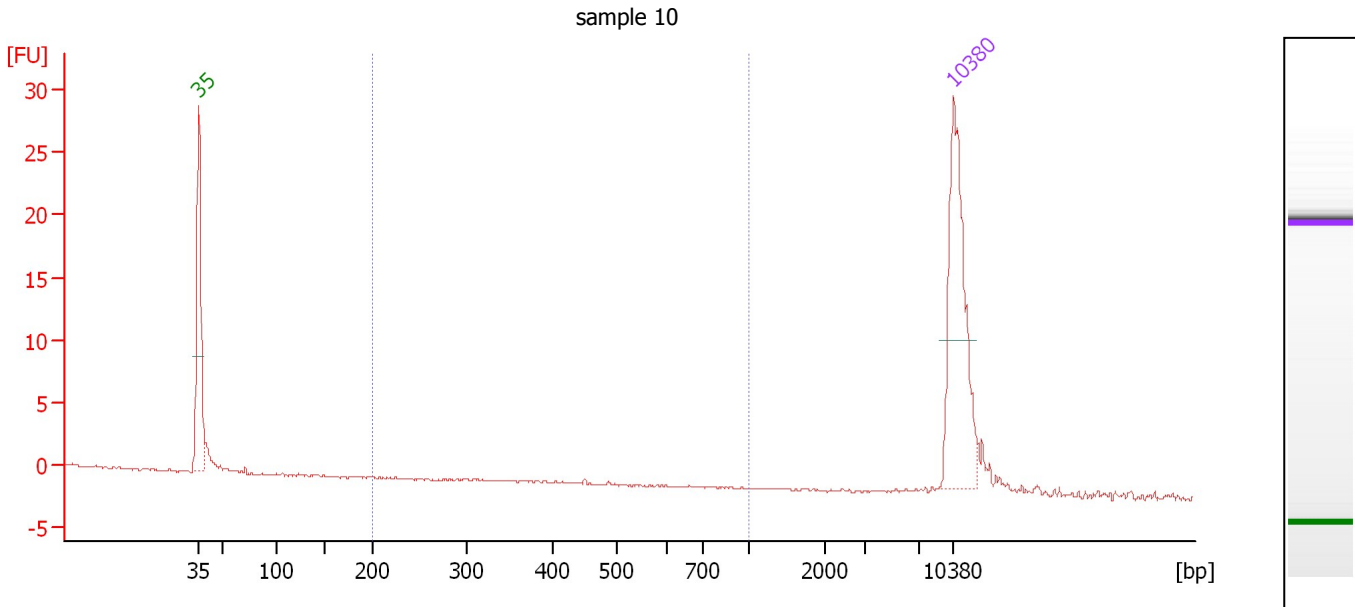
Region table for sample 9 : sample 9

From [bp]	Average Size [bp]	To [bp]	Corr. Area	Molarity [pmol/l]	% of Total	Size distribution in CV [%]	Conc. [pg/μl]	Color
200	345	1,000	1.0	9.6	6	31.9	1.98	Blue

Assay Class: High Sensitivity DNA Assay
 Data Path: C:\...ents and Settings\Bioanalyzer\2015-05-13\2015-05-13_002.xad

Created: 5/13/2015 12:33:10 PM
 Modified: 5/13/2015 1:14:35 PM

Electropherogram Summary Continued ...



Overall Results for sample 10 : sample 10

Number of peaks found: 0 Corr. Area 1: 0.0
 Noise: 0.1

Peak table for sample 10 : sample 10

Peak	Size [bp]	Conc. [pg/μl]	Molarity [pmol/l]	Observations	Aligned Migration Time [s]
1	35	125.00	5,411.3	Lower Marker	43.00
2	10,380	75.00	10.9	Upper Marker	113.00

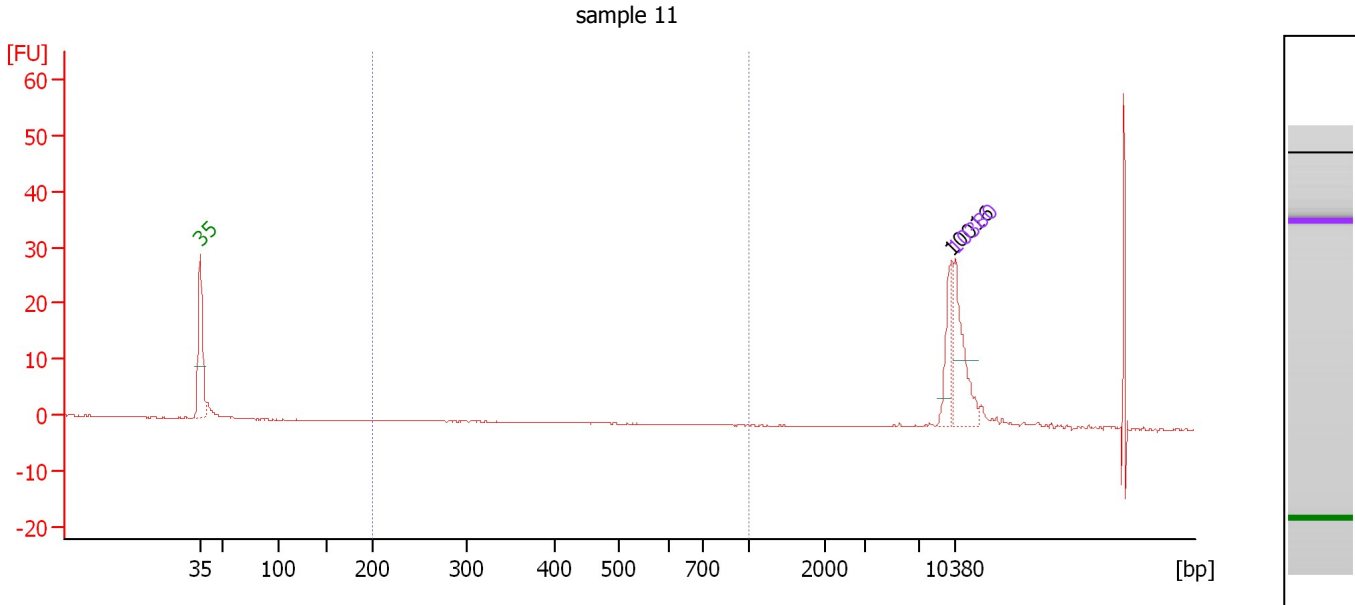
Region table for sample 10 : sample 10

From [bp]	Average Size [bp]	To [bp]	Corr. Area	Molarity [pmol/l]	% of Total	Size distribution in CV [%]	Conc. [pg/μl]	Color
200	453	1,000	0.0	0.2	0	2.3	0.07	Blue

Assay Class: High Sensitivity DNA Assay
 Data Path: C:\...ents and Settings\Bioanalyzer\2015-05-13\2015-05-13_002.xad

Created: 5/13/2015 12:33:10 PM
 Modified: 5/13/2015 1:14:35 PM

Electropherogram Summary Continued ...



Overall Results for sample 11 : sample 11

Number of peaks found: 1 Corr. Area 1: 0.0
 Noise: 0.1

Peak table for sample 11 : sample 11

Peak	Size [bp]	Conc. [pg/μl]	Molarity [pmol/l]	Observations	Aligned Migration Time [s]
1	35	125.00	5,411.3	Lower Marker	43.00
2	10,016	41.80	6.3		112.65
3	10,380	75.00	10.9	Upper Marker	113.00

Region table for sample 11 : sample 11

From [bp]	Average Size [bp]	To [bp]	Corr. Area	Molarity [pmol/l]	% of Total	Size distribution in CV [%]	Conc. [pg/μl]	Color
200	0	1,000	0.0	0.0	0	0.0	0.00	Blue

Assay Class: High Sensitivity DNA Assay
Data Path: C:\...ents and Settings\Bioanalyzer\2015-05-13\2015-05-13_002.xad

Created: 5/13/2015 12:33:10 PM
Modified: 5/13/2015 1:14:35 PM

Gel Image

