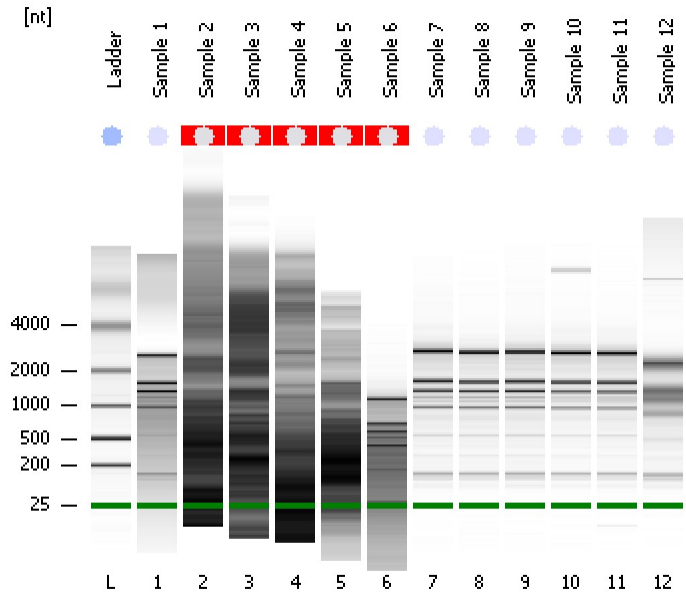


Assay Class: Plant RNA Nano
Data Path: C:\...ents and Settings\Bioanalyzer\2015-05-13\2015-05-13_004.xad

Created: 5/13/2015 2:52:49 PM
Modified: 5/13/2015 3:15:57 PM

Electrophoresis File Run Summary



Instrument Information:

Instrument Name: DE13701086 Firmware: C.01.069
Serial#: DE13701086 Type: G2938B

Assay Information:

Assay Origin Path: C:\Program Files\Agilent\2100 bioanalyzer\2100 expert\assays\RNA\Plant RNA Nano.xsy

Assay Class: Plant RNA Nano

Version: 1.3

Assay Comments: Total RNA Analysis ng sensitivity (Plant)

© Copyright 2003 - 2009 Agilent Technologies, Inc.

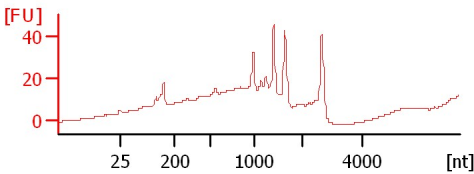
Chip Information:

Chip Lot #:

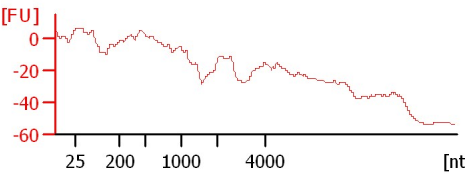
Reagent Kit Lot #:

Chip Comments:

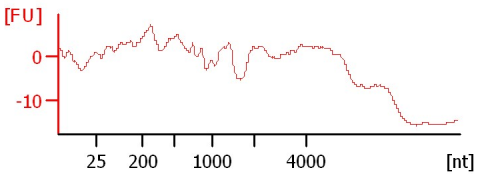
Sample 1
RIN: 4.80



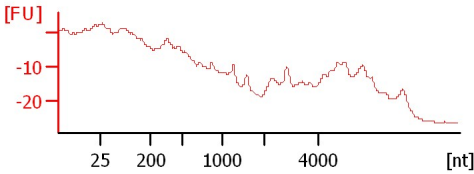
Sample 2
RIN N/A



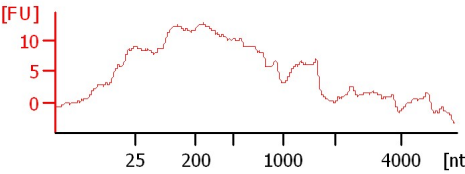
Sample 3
RIN N/A



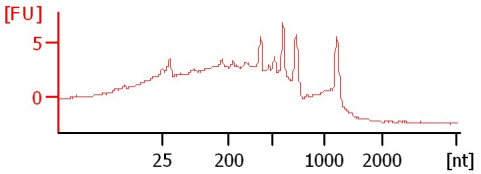
Sample 4
RIN N/A



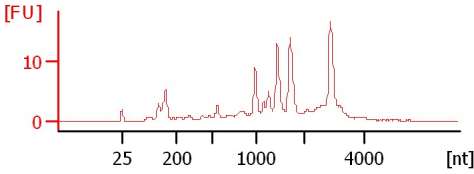
Sample 5
RIN N/A



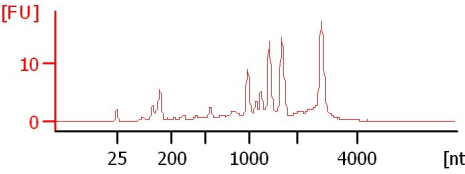
Sample 6
RIN N/A



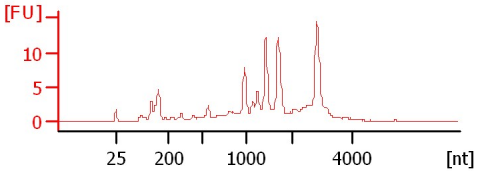
Sample 7
RIN: 6.70



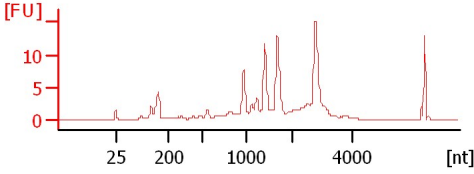
Sample 8
RIN: 6.60



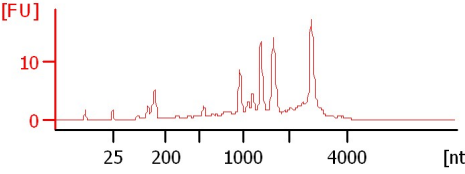
Sample 9
RIN: 6.60



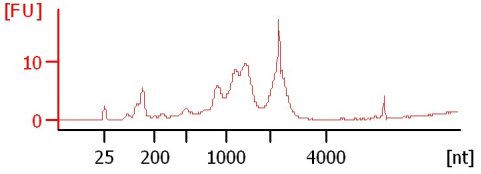
Sample 10
RIN: 6.90



Sample 11
RIN: 6.90



Sample 12
RIN: 6.90



Assay Class: Plant RNA Nano
Data Path: C:\...ents and Settings\Bioanalyzer\2015-05-13\2015-05-13_004.xad

Created: 5/13/2015 2:52:49 PM
Modified: 5/13/2015 3:15:57 PM

Electrophoresis File Run Summary (Chip Summary)

Sample Name	Sample Comment	Status	Result Label	Result Color
Sample 1		✓	RIN: 4.80	
Sample 2		✓	RIN N/A	
Sample 3		✓	RIN N/A	
Sample 4		✓	RIN N/A	
Sample 5		✓	RIN N/A	
Sample 6		✓	RIN N/A	
Sample 7		✓	RIN: 6.70	
Sample 8		✓	RIN: 6.60	
Sample 9		✓	RIN: 6.60	
Sample 10		✓	RIN: 6.90	
Sample 11		✓	RIN: 6.90	
Sample 12		✓	RIN: 6.90	
Ladder		✓	All Other Samples	

Chip Lot #

Reagent Kit Lot #

Chip Comments :

Assay Class: Plant RNA Nano
Data Path: C:\...ents and Settings\Bioanalyzer\2015-05-13\2015-05-13_004.xad

Created: 5/13/2015 2:52:49 PM
Modified: 5/13/2015 3:15:57 PM

Electrophoresis Assay Details

General Analysis Settings

Number of Available Sample and Ladder Wells (Max.) : 13
Minimum Visible Range [s] : 17
Maximum Visible Range [s] : 70
Start Analysis Time Range [s] : 19
End Analysis Time Range [s] : 69
Ladder Concentration [ng/μl] : 150
Lower Marker Concentration [ng/μl] : 0
Upper Marker Concentration [ng/μl] : 0
Used Lower Marker for Quantitation
Standard Curve Fit is Logarithmic
Show Data Aligned to Lower Marker

Integrator Settings

Integration Start Time [s] : 19
Integration End Time [s] : 69
Slope Threshold : 0.6
Height Threshold [FU] : 0.2
Area Threshold : 0.1
Width Threshold [s] : 0.2
Baseline Plateau [s] : 6

Filter Settings

Filter Width [s] : 0.5
Polynomial Order : 4

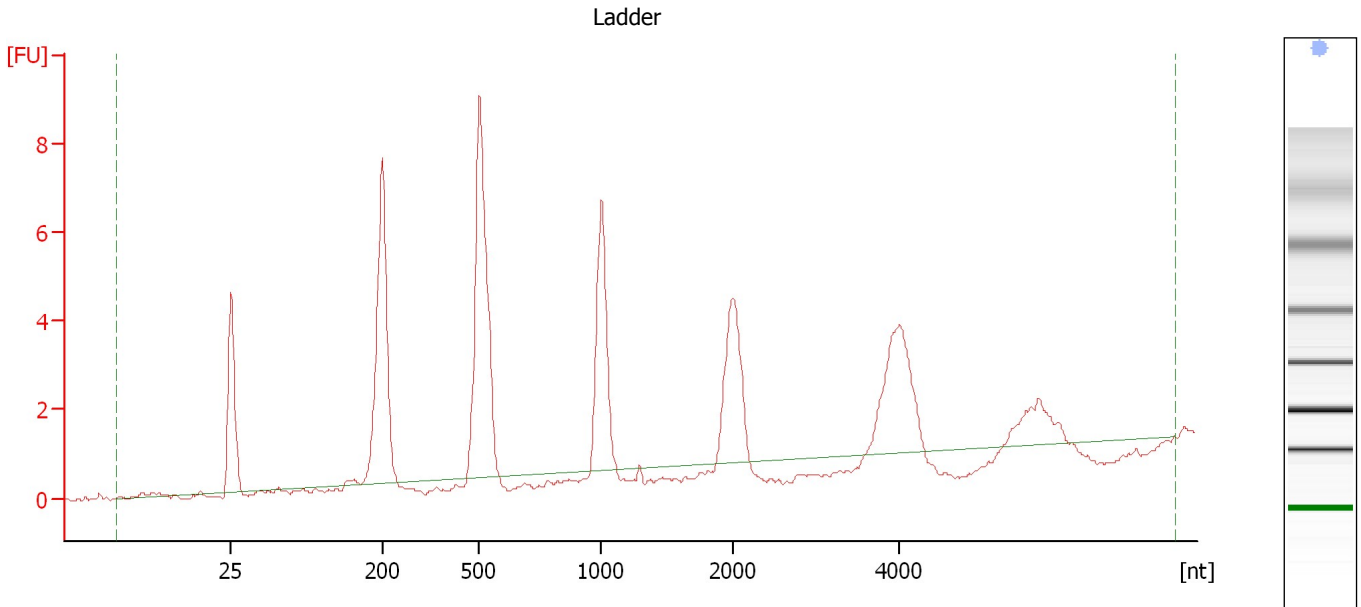
Ladder

Ladder Peak	Size
1	25
2	200
3	500
4	1000
5	2000
6	4000

Assay Class: Plant RNA Nano
Data Path: C:\...ents and Settings\Bioanalyzer\2015-05-13\2015-05-13_004.xad

Created: 5/13/2015 2:52:49 PM
Modified: 5/13/2015 3:15:57 PM

Electropherogram Summary



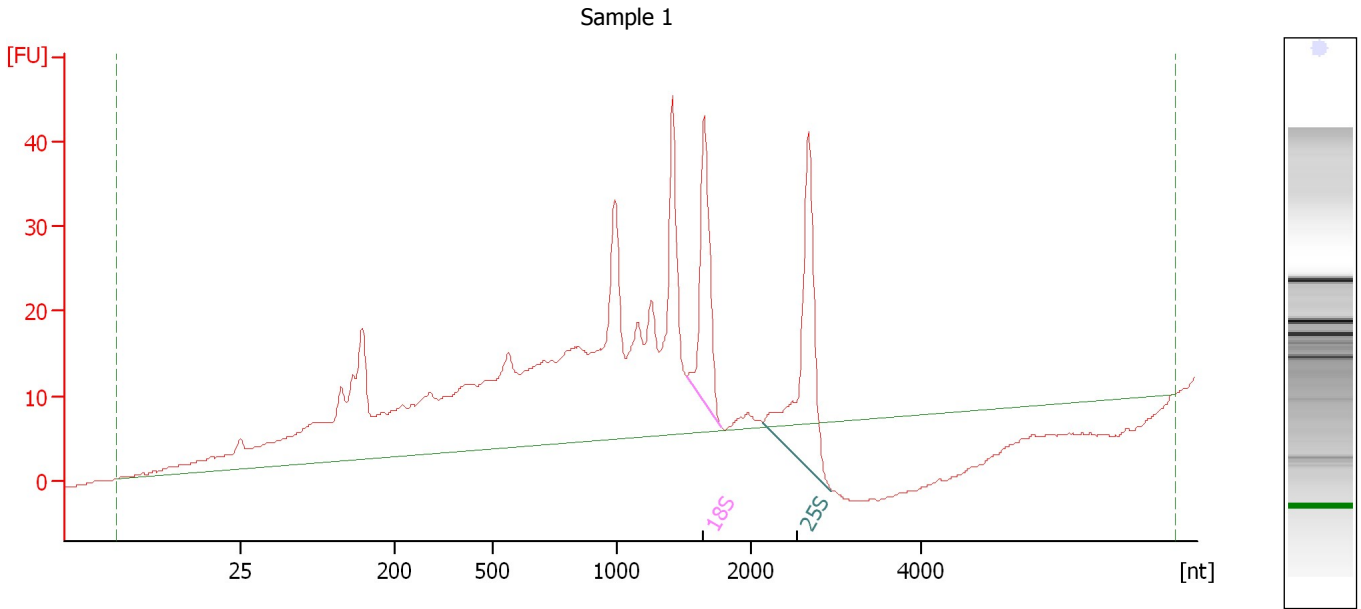
Overall Results for Ladder

RNA Area:	51.6	Result Flagging Color:	
RNA Concentration:	150 ng/μl	Result Flagging Label:	All Other Samples

Assay Class: Plant RNA Nano
Data Path: C:\...ents and Settings\Bioanalyzer\2015-05-13\2015-05-13_004.xad

Created: 5/13/2015 2:52:49 PM
Modified: 5/13/2015 3:15:57 PM

Electropherogram Summary Continued ...



Overall Results for sample 1 : Sample 1

RNA Area:	585.8	RNA Integrity Number (RIN):	4.8 (B.02.08)
RNA Concentration:	1,703 ng/μl	Result Flagging Color:	
rRNA Ratio [25s / 18s]:	1.5	Result Flagging Label:	RIN: 4.80

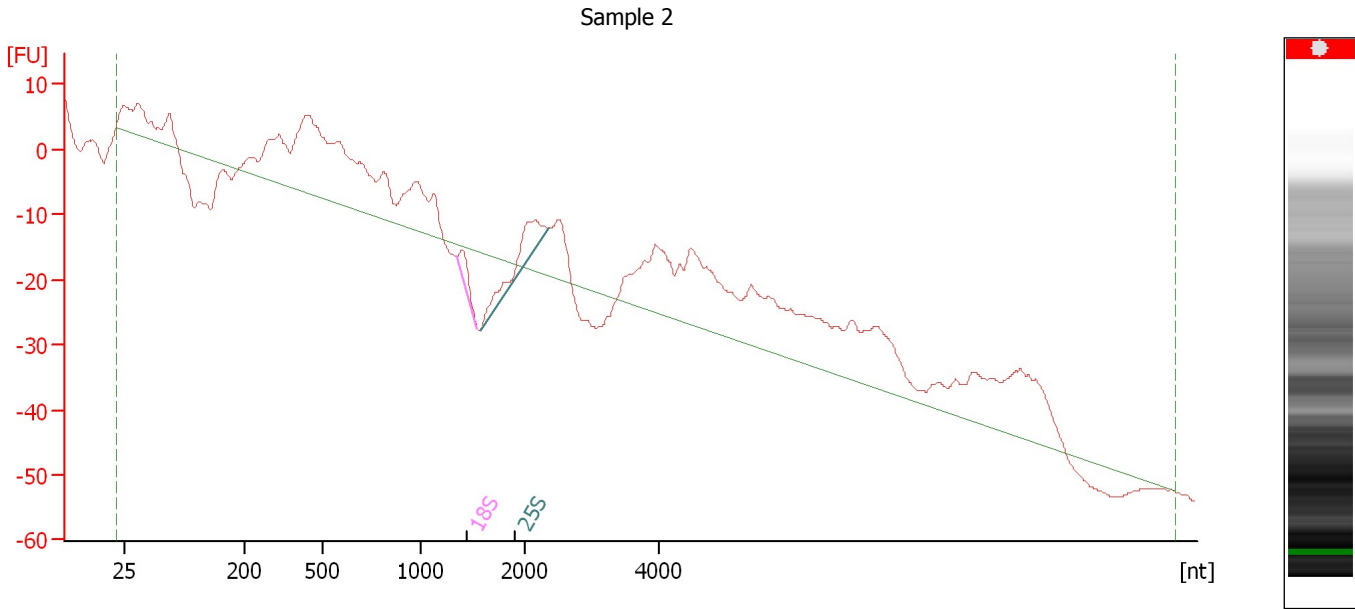
Fragment table for sample 1 : Sample 1

Name	Start Size [nt]	End Size [nt]	Area	% of total Area
18S	1,516	1,772	37.0	6.3
25S	2,144	2,950	56.2	9.6

Assay Class: Plant RNA Nano
 Data Path: C:\...ents and Settings\Bioanalyzer\2015-05-13\2015-05-13_004.xad

Created: 5/13/2015 2:52:49 PM
 Modified: 5/13/2015 3:15:57 PM

Electropherogram Summary Continued ...



Overall Results for sample 2 : Sample 2

RNA Area:	557.0	RNA Integrity Number (RIN):	N/A (B.02.08)
RNA Concentration:	1,619 ng/μl	Result Flagging Color:	
rRNA Ratio [25s / 18s]:	3.2	Result Flagging Label:	RIN N/A

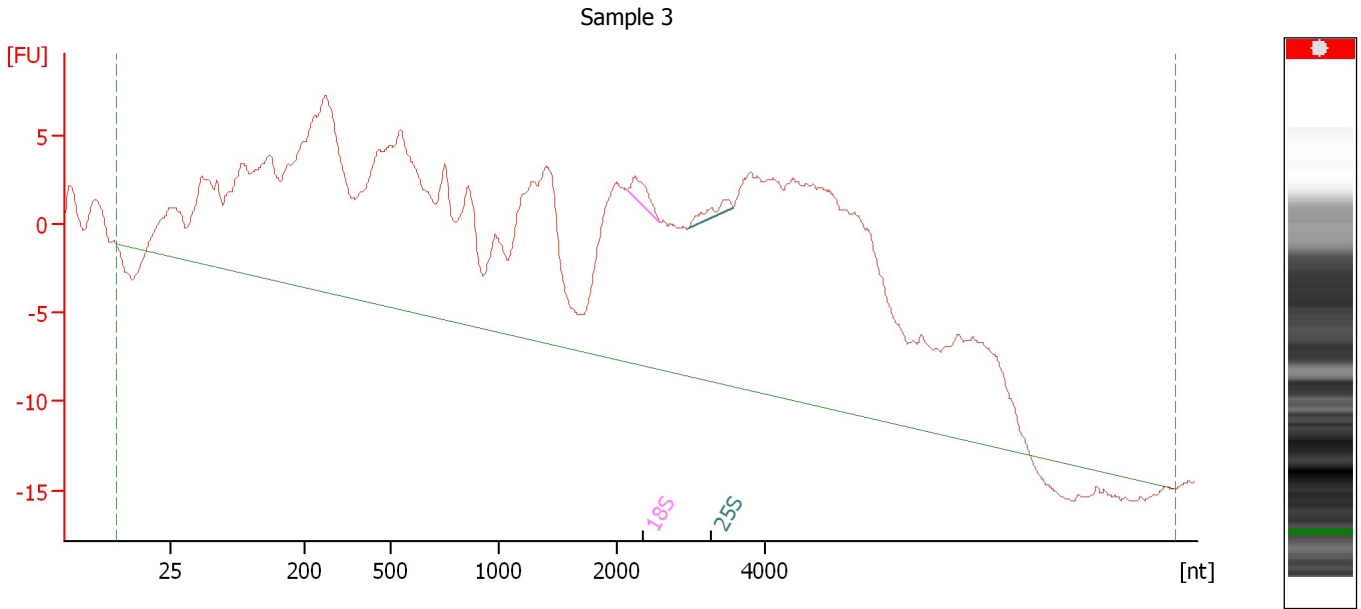
Fragment table for sample 2 : Sample 2

Name	Start Size [nt]	End Size [nt]	Area	% of total Area
18S	1,352	1,545	6.5	1.2
25S	1,576	2,375	20.5	3.7

Assay Class: Plant RNA Nano
Data Path: C:\...ents and Settings\Bioanalyzer\2015-05-13\2015-05-13_004.xad

Created: 5/13/2015 2:52:49 PM
Modified: 5/13/2015 3:15:57 PM

Electropherogram Summary Continued ...



Overall Results for sample 3 : Sample 3

RNA Area:	741.1	RNA Integrity Number (RIN):	N/A (B.02.08)
RNA Concentration:	2,154 ng/μl	Result Flagging Color:	
rRNA Ratio [25s / 18s]:	0.8	Result Flagging Label:	RIN N/A

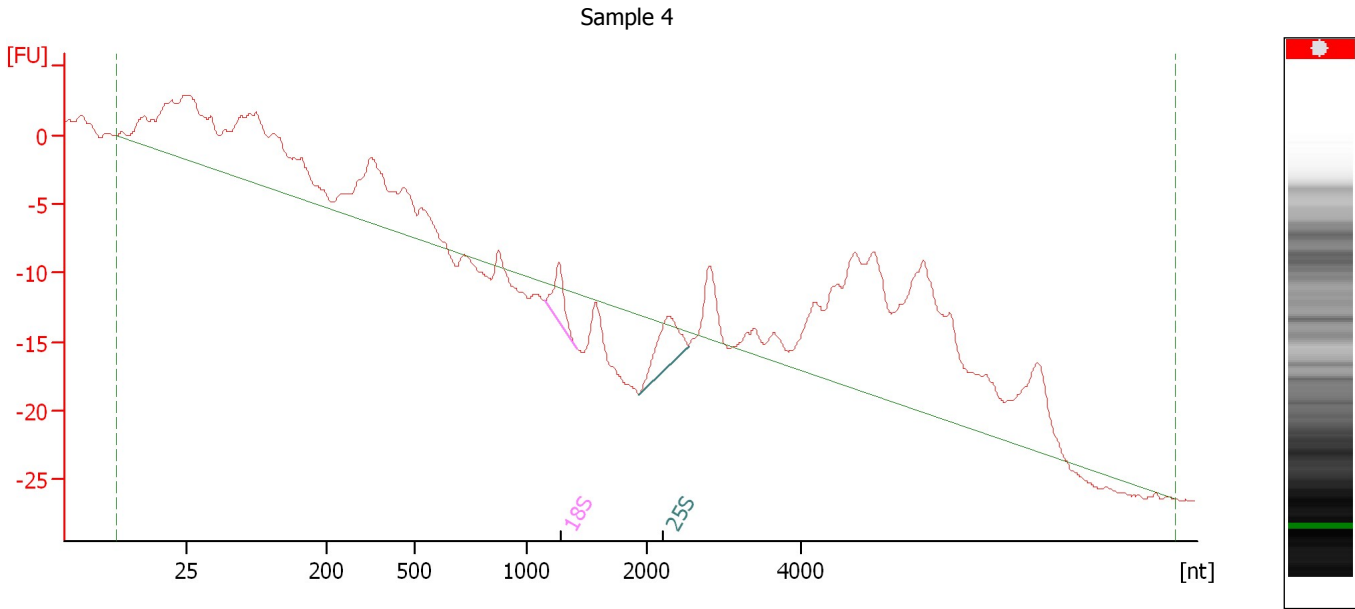
Fragment table for sample 3 : Sample 3

Name	Start Size [nt]	End Size [nt]	Area	% of total Area
18S	2,156	2,590	2.4	0.3
25S	2,980	3,587	1.9	0.3

Assay Class: Plant RNA Nano
 Data Path: C:\...ents and Settings\Bioanalyzer\2015-05-13\2015-05-13_004.xad

Created: 5/13/2015 2:52:49 PM
 Modified: 5/13/2015 3:15:57 PM

Electropherogram Summary Continued ...



Overall Results for sample 4 : Sample 4

RNA Area:	263.1	RNA Integrity Number (RIN):	N/A (B.02.08)
RNA Concentration:	765 ng/μl	Result Flagging Color:	
rRNA Ratio [25s / 18s]:	1.7	Result Flagging Label:	RIN N/A

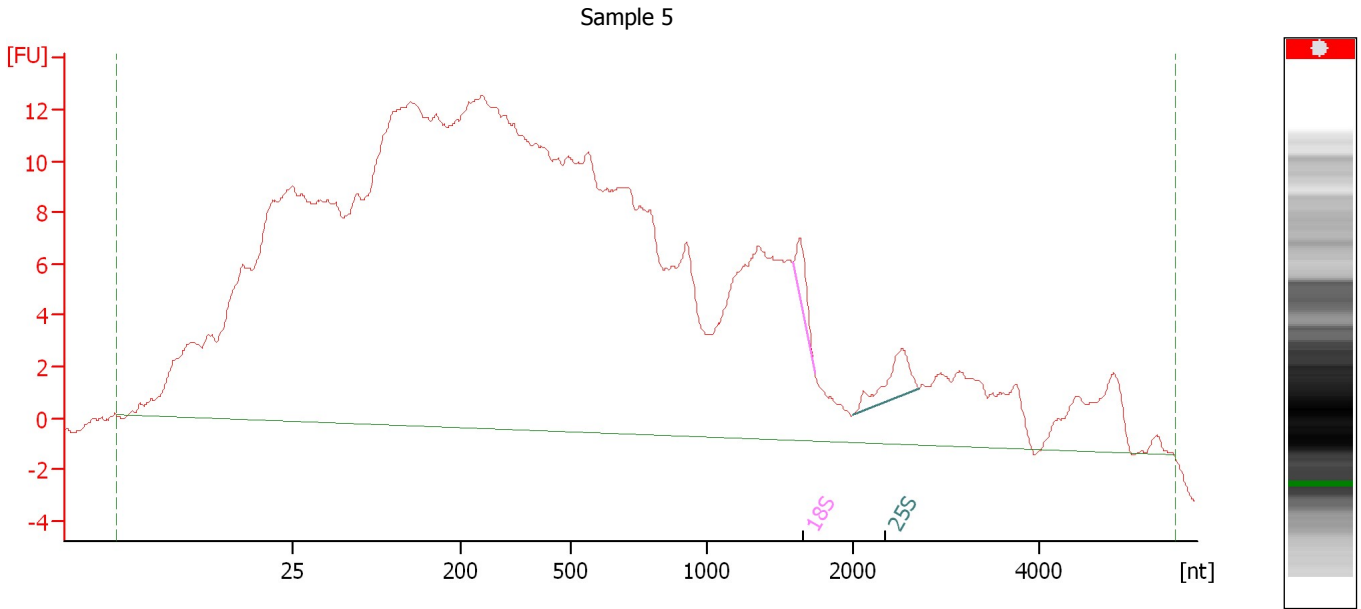
Fragment table for sample 4 : Sample 4

Name	Start Size [nt]	End Size [nt]	Area	% of total Area
18S	1,155	1,412	5.8	2.2
25S	1,935	2,540	9.6	3.7

Assay Class: Plant RNA Nano
 Data Path: C:\...ents and Settings\Bioanalyzer\2015-05-13\2015-05-13_004.xad

Created: 5/13/2015 2:52:49 PM
 Modified: 5/13/2015 3:15:57 PM

Electropherogram Summary Continued ...



Overall Results for sample 5 : Sample 5

RNA Area:	670.4	RNA Integrity Number (RIN):	N/A (B.02.08)
RNA Concentration:	1,949 ng/μl	Result Flagging Color:	
rRNA Ratio [25s / 18s]:	1.7	Result Flagging Label:	RIN N/A

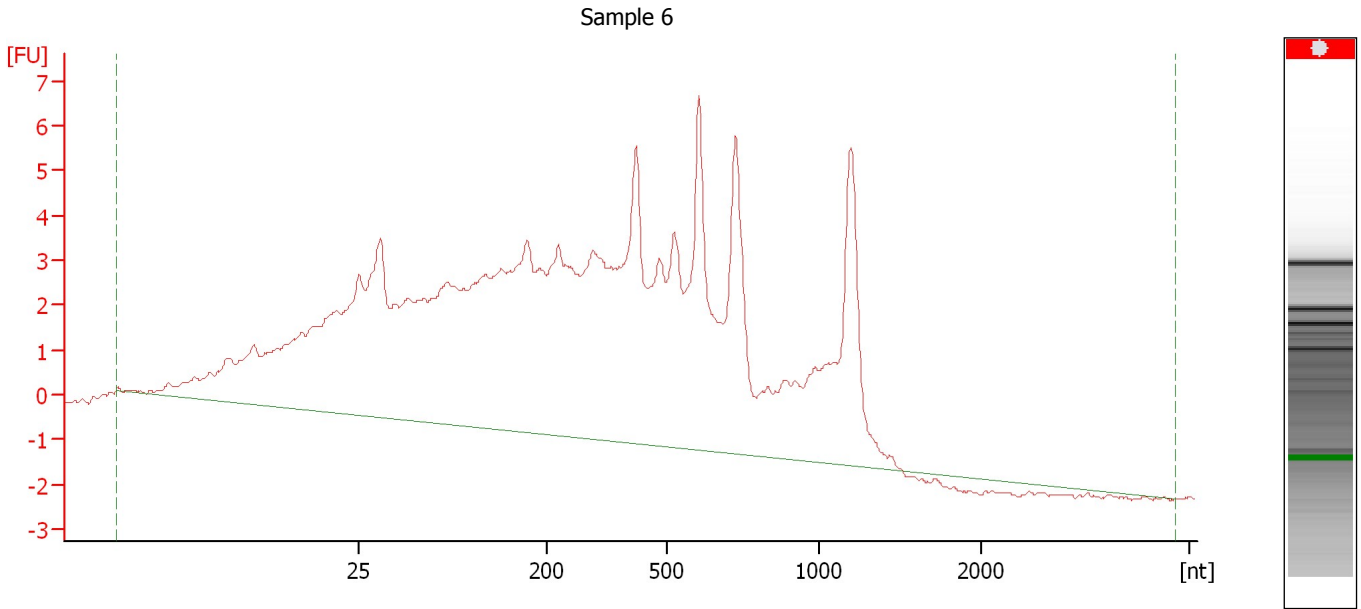
Fragment table for sample 5 : Sample 5

Name	Start Size [nt]	End Size [nt]	Area	% of total Area
18S	1,586	1,739	2.6	0.4
25S	1,994	2,714	4.4	0.6


Assay Class: Plant RNA Nano
Data Path: C:\...ents and Settings\Bioanalyzer\2015-05-13\2015-05-13_004.xad

Created: 5/13/2015 2:52:49 PM
Modified: 5/13/2015 3:15:57 PM

Electropherogram Summary Continued ...



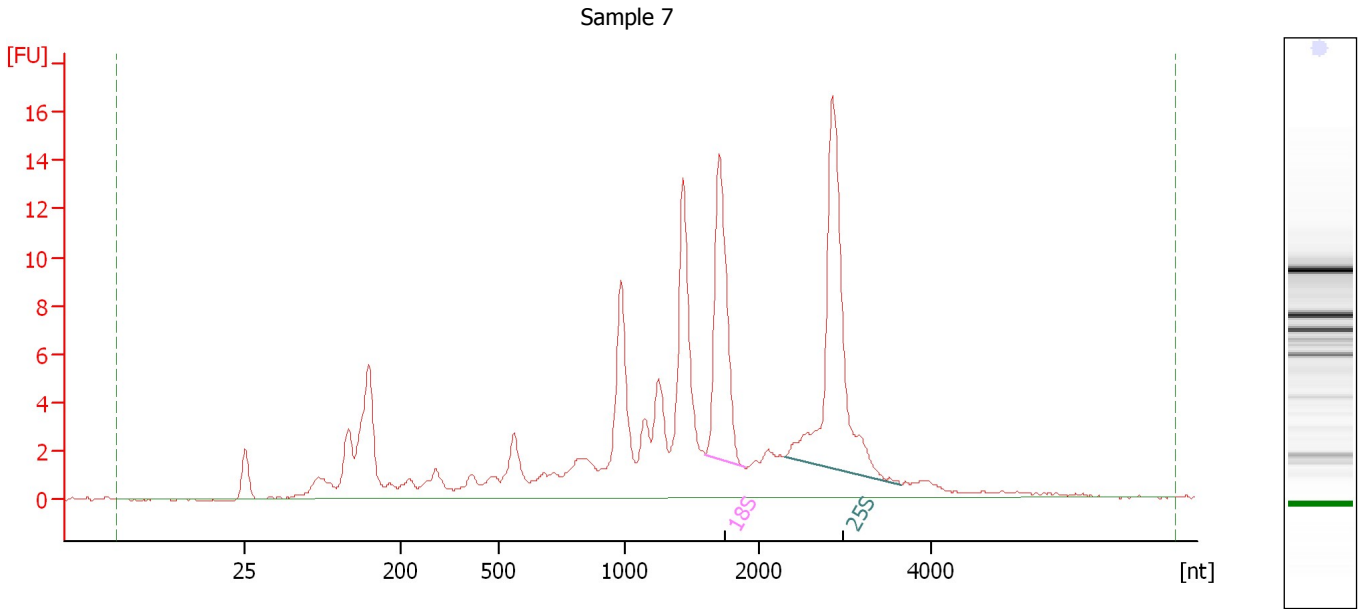
Overall Results for sample 6 : Sample 6

RNA Area:	231.3	RNA Integrity Number (RIN):	N/A (B.02.08)
RNA Concentration:	672 ng/μl	Result Flagging Color:	
rRNA Ratio [25s / 18s]:	0.0	Result Flagging Label:	RIN N/A

Assay Class: Plant RNA Nano
Data Path: C:\...ents and Settings\Bioanalyzer\2015-05-13\2015-05-13_004.xad

Created: 5/13/2015 2:52:49 PM
Modified: 5/13/2015 3:15:57 PM

Electropherogram Summary Continued ...



Overall Results for sample 7 : Sample 7

RNA Area:	162.5	RNA Integrity Number (RIN):	6.7 (B.02.08)
RNA Concentration:	472 ng/μl	Result Flagging Color:	
rRNA Ratio [25s / 18s]:	1.5	Result Flagging Label:	RIN: 6.70

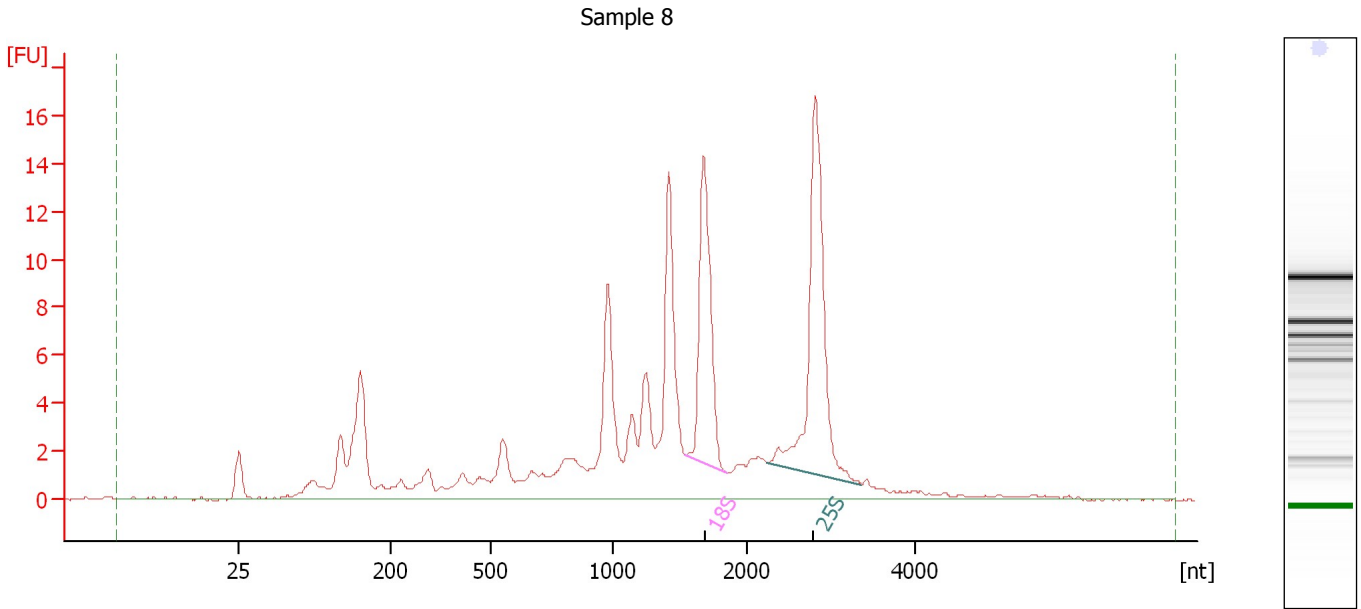
Fragment table for sample 7 : Sample 7

Name	Start Size [nt]	End Size [nt]	Area	% of total Area
18S	1,601	1,886	17.4	10.7
25S	2,296	3,658	26.8	16.5

Assay Class: Plant RNA Nano
 Data Path: C:\...ents and Settings\Bioanalyzer\2015-05-13\2015-05-13_004.xad

Created: 5/13/2015 2:52:49 PM
 Modified: 5/13/2015 3:15:57 PM

Electropherogram Summary Continued ...



Overall Results for sample 8 : Sample 8

RNA Area:	154.0	RNA Integrity Number (RIN):	6.6 (B.02.08)
RNA Concentration:	447 ng/μl	Result Flagging Color:	
rRNA Ratio [25s / 18s]:	1.4	Result Flagging Label:	RIN: 6.60

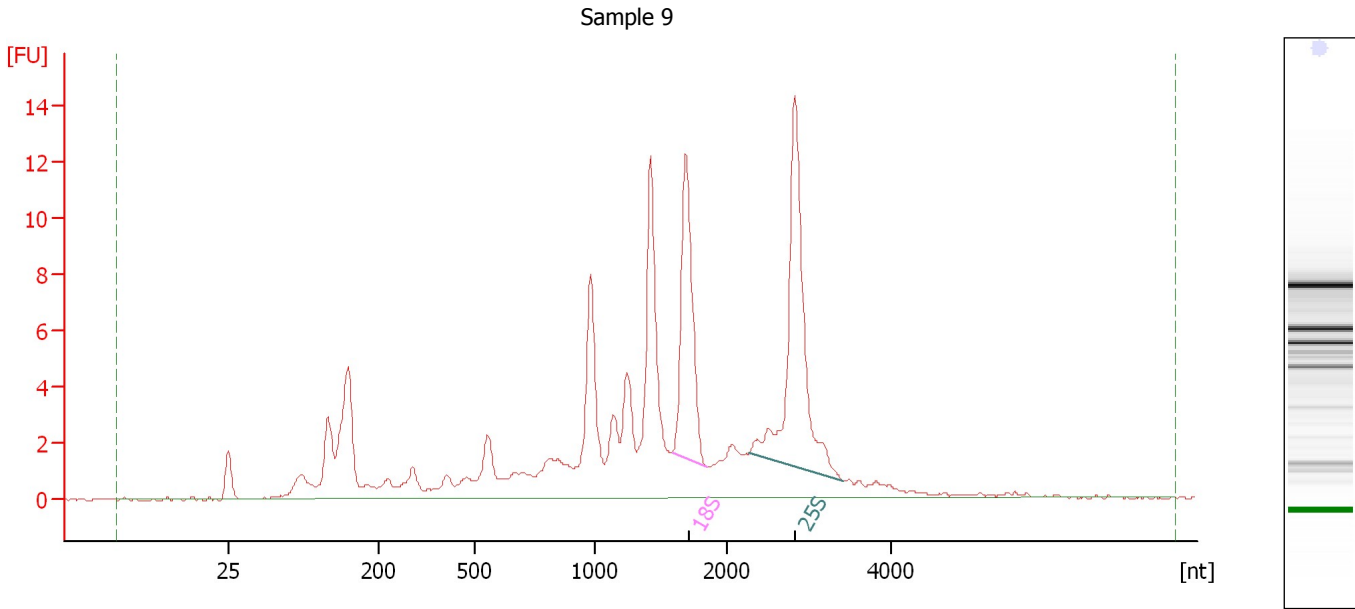
Fragment table for sample 8 : Sample 8

Name	Start Size [nt]	End Size [nt]	Area	% of total Area
18S	1,538	1,842	16.7	10.8
25S	2,245	3,357	24.1	15.7

Assay Class: Plant RNA Nano
Data Path: C:\...ents and Settings\Bioanalyzer\2015-05-13\2015-05-13_004.xad

Created: 5/13/2015 2:52:49 PM
Modified: 5/13/2015 3:15:57 PM

Electropherogram Summary Continued ...



Overall Results for sample 9 : Sample 9

RNA Area:	138.4	RNA Integrity Number (RIN):	6.6 (B.02.08)
RNA Concentration:	402 ng/μl	Result Flagging Color:	
rRNA Ratio [25s / 18s]:	1.5	Result Flagging Label:	RIN: 6.60

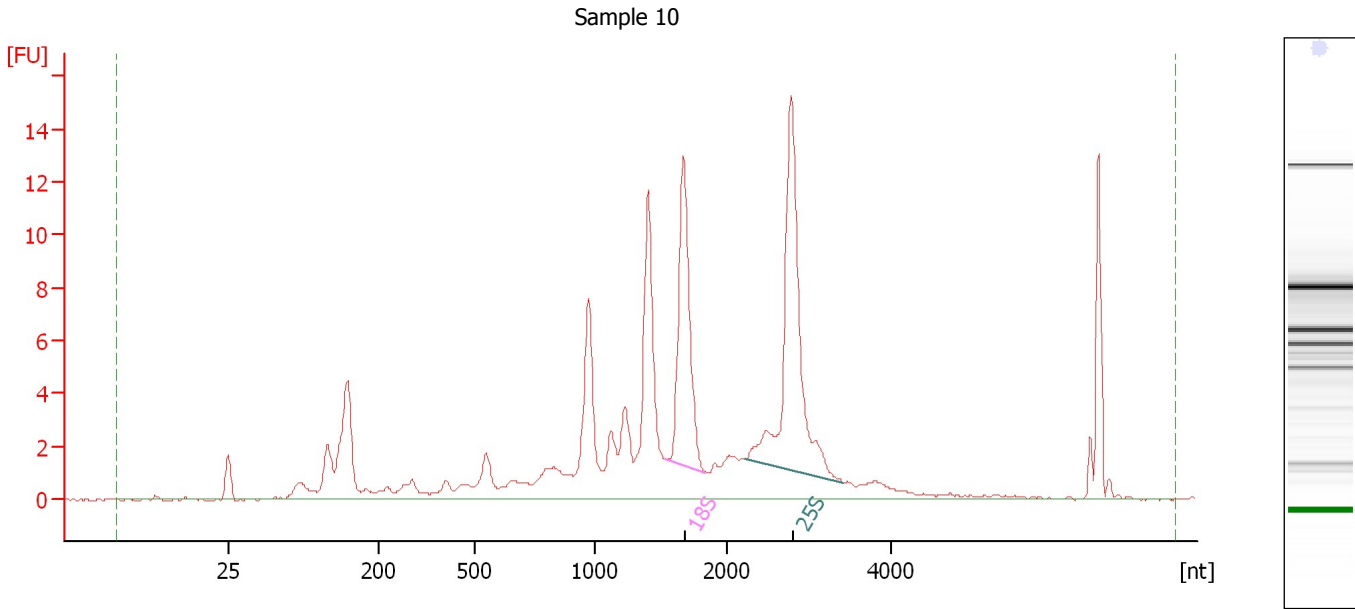
Fragment table for sample 9 : Sample 9

Name	Start Size [nt]	End Size [nt]	Area	% of total Area
18S	1,589	1,851	14.3	10.4
25S	2,281	3,416	21.7	15.7

Assay Class: Plant RNA Nano
Data Path: C:\...ents and Settings\Bioanalyzer\2015-05-13\2015-05-13_004.xad

Created: 5/13/2015 2:52:49 PM
Modified: 5/13/2015 3:15:57 PM

Electropherogram Summary Continued ...



Overall Results for sample 10 : Sample 10

RNA Area: 131.9 RNA Integrity Number (RIN): 6.9 (B.02.08)
RNA Concentration: 383 ng/μl Result Flagging Color:
rRNA Ratio [25s / 18s]: 1.5 Result Flagging Label: RIN: 6.90

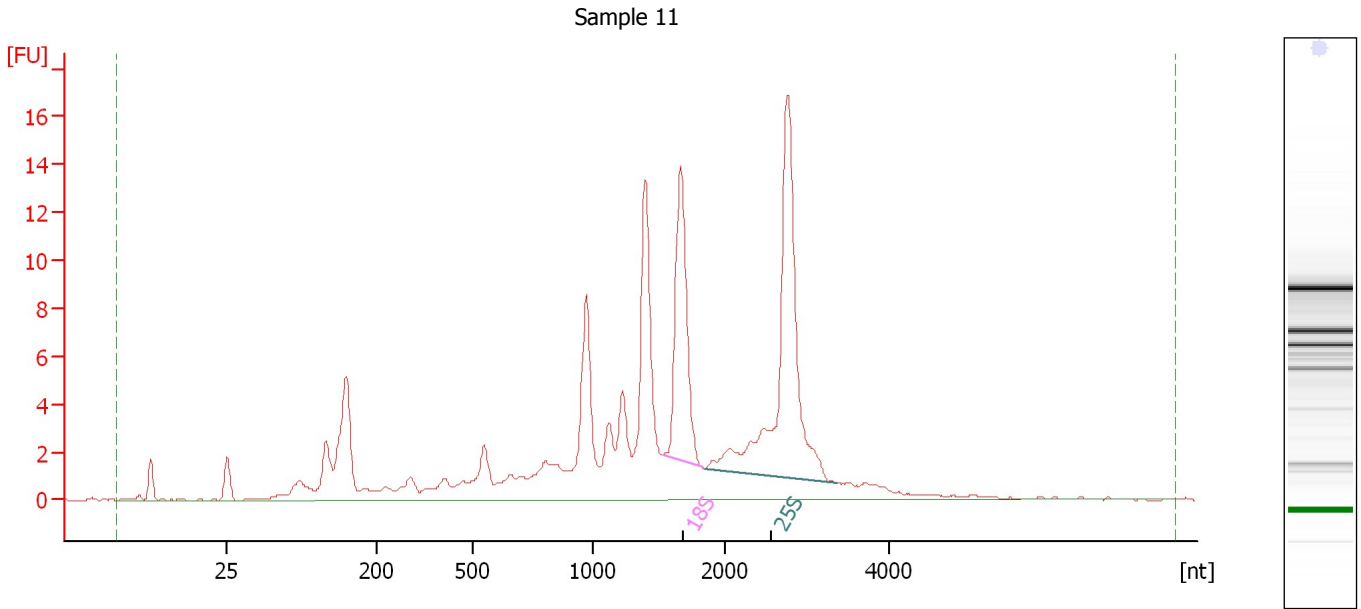
Fragment table for sample 10 : Sample 10

Name	Start Size [nt]	End Size [nt]	Area	% of total Area
18S	1,524	1,835	15.0	11.4
25S	2,229	3,416	23.2	17.6

Assay Class: Plant RNA Nano
Data Path: C:\...ents and Settings\Bioanalyzer\2015-05-13\2015-05-13_004.xad

Created: 5/13/2015 2:52:49 PM
Modified: 5/13/2015 3:15:57 PM

Electropherogram Summary Continued ...



Overall Results for sample 11 : Sample 11

RNA Area:	153.6	RNA Integrity Number (RIN):	6.9 (B.02.08)
RNA Concentration:	446 ng/μl	Result Flagging Color:	
rRNA Ratio [25s / 18s]:	1.9	Result Flagging Label:	RIN: 6.90

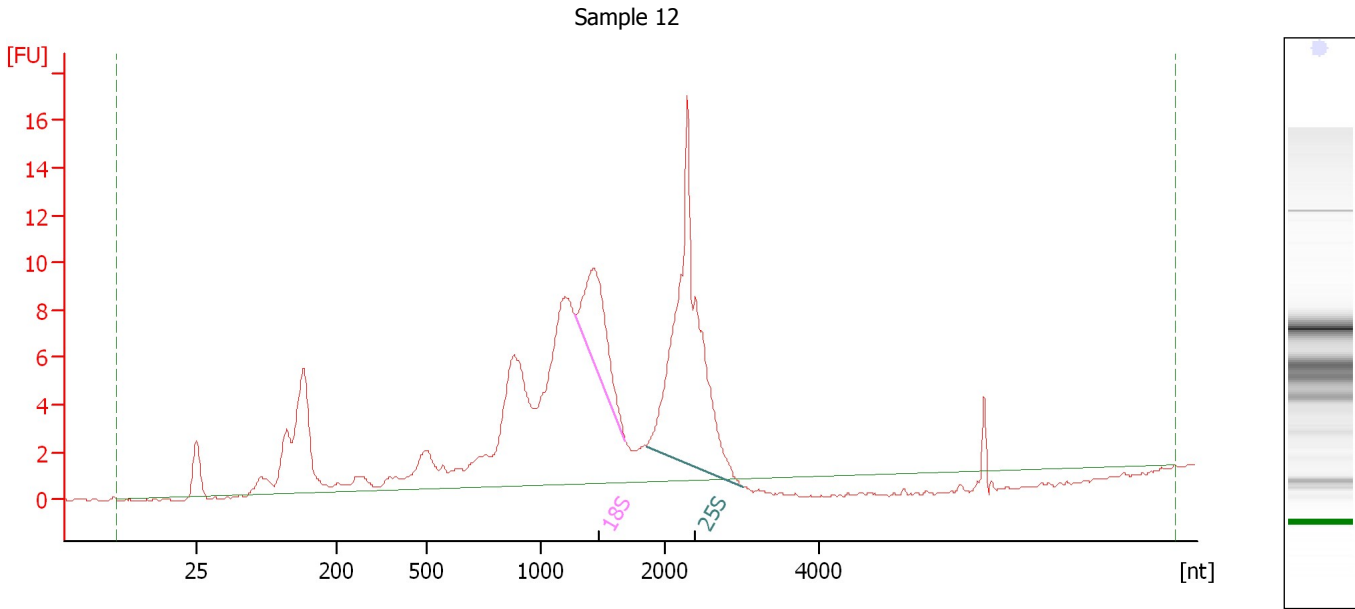
Fragment table for sample 11 : Sample 11

Name	Start Size [nt]	End Size [nt]	Area	% of total Area
18S	1,530	1,834	16.2	10.5
25S	1,850	3,354	30.4	19.8

Assay Class: Plant RNA Nano
Data Path: C:\...ents and Settings\Bioanalyzer\2015-05-13\2015-05-13_004.xad

Created: 5/13/2015 2:52:49 PM
Modified: 5/13/2015 3:15:57 PM

Electropherogram Summary Continued ...



Overall Results for sample 12 : Sample 12

RNA Area: 167.7 RNA Integrity Number (RIN): 6.9 (B.02.08)
RNA Concentration: 488 ng/μl Result Flagging Color:
rRNA Ratio [25s / 18s]: 3.4 Result Flagging Label: RIN: 6.90

Fragment table for sample 12 : Sample 12

Name	Start Size [nt]	End Size [nt]	Area	% of total Area
18S	1,278	1,687	11.1	6.6
25S	1,853	3,004	37.4	22.3

Assay Class: Plant RNA Nano
Data Path: C:\...ents and Settings\Bioanalyzer\2015-05-13\2015-05-13_004.xad

Created: 5/13/2015 2:52:49 PM
Modified: 5/13/2015 3:15:57 PM

Gel Image

