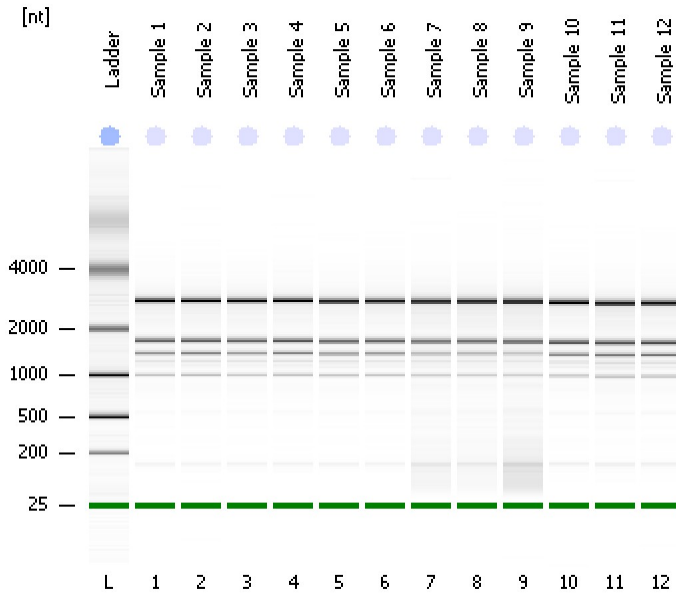


Assay Class: Plant RNA Nano
Data Path: C:\...ents and Settings\Bioanalyzer\2015-05-13\2015-05-13_005.xad

Created: 5/13/2015 3:33:15 PM
Modified: 5/13/2015 3:56:24 PM

Electrophoresis File Run Summary



Instrument Information:

Instrument Name: DE13701086 Firmware: C.01.069
Serial#: DE13701086 Type: G2938B

Assay Information:

Assay Origin Path: C:\Program Files\Agilent\2100 bioanalyzer\2100 expert\assays\RNA\Plant RNA Nano.xsy

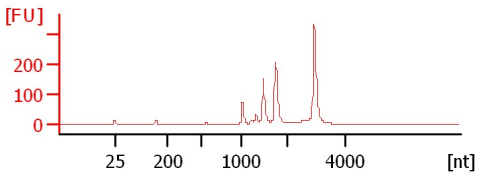
Assay Class: Plant RNA Nano
Version: 1.3
Assay Comments: Total RNA Analysis ng sensitivity (Plant)

© Copyright 2003 - 2009 Agilent Technologies, Inc.

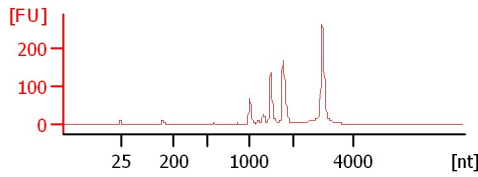
Chip Information:

Chip Lot #: Reagent Kit Lot #: Chip Comments:

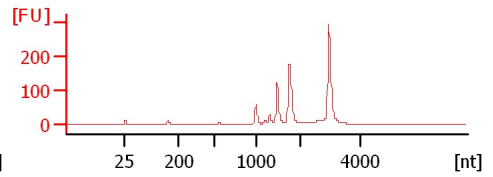
Sample 1
RIN: 7.90



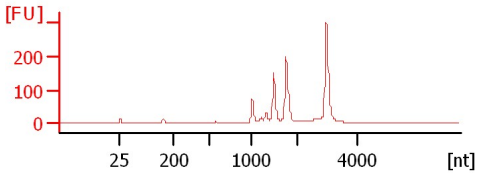
Sample 2
RIN: 7.80



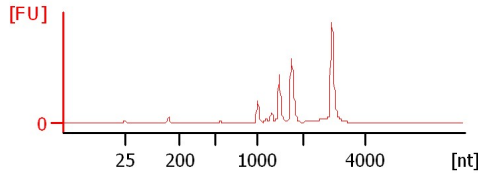
Sample 3
RIN: 8



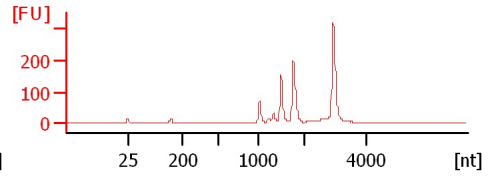
Sample 4
RIN: 7.80



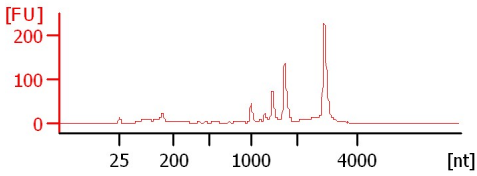
Sample 5
RIN: 7.90



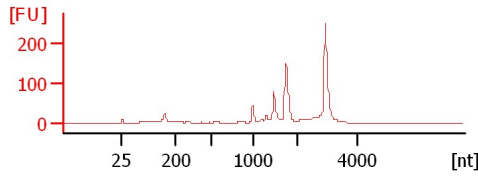
Sample 6
RIN: 8



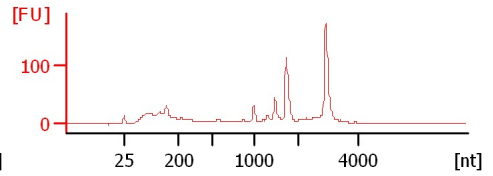
Sample 7
RIN: 7.90



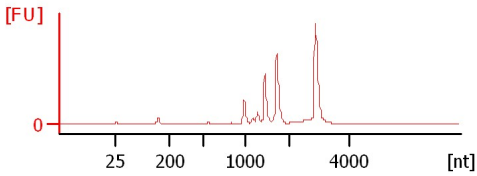
Sample 8
RIN: 7.90



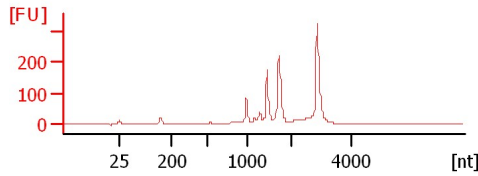
Sample 9
RIN: 7.60



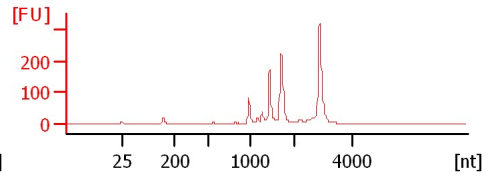
Sample 10
RIN: 7.80



Sample 11
RIN: 7.70



Sample 12
RIN: 7.70



Assay Class: Plant RNA Nano
Data Path: C:\...ents and Settings\Bioanalyzer\2015-05-13\2015-05-13_005.xad

Created: 5/13/2015 3:33:15 PM
Modified: 5/13/2015 3:56:24 PM

Electrophoresis File Run Summary (Chip Summary)

Sample Name	Sample Comment	Status	Result Label	Result Color
Sample 1		✓	RIN: 7.90	
Sample 2		✓	RIN: 7.80	
Sample 3		✓	RIN:8	
Sample 4		✓	RIN: 7.80	
Sample 5		✓	RIN: 7.90	
Sample 6		✓	RIN:8	
Sample 7		✓	RIN: 7.90	
Sample 8		✓	RIN: 7.90	
Sample 9		✓	RIN: 7.60	
Sample 10		✓	RIN: 7.80	
Sample 11		✓	RIN: 7.70	
Sample 12		✓	RIN: 7.70	
Ladder		✓	All Other Samples	

Chip Lot #

Reagent Kit Lot #

Chip Comments :

Assay Class: Plant RNA Nano
Data Path: C:\...ents and Settings\Bioanalyzer\2015-05-13\2015-05-13_005.xad

Created: 5/13/2015 3:33:15 PM
Modified: 5/13/2015 3:56:24 PM

Electrophoresis Assay Details

General Analysis Settings

Number of Available Sample and Ladder Wells (Max.) : 13
Minimum Visible Range [s] : 17
Maximum Visible Range [s] : 70
Start Analysis Time Range [s] : 19
End Analysis Time Range [s] : 69
Ladder Concentration [ng/ μ l] : 150
Lower Marker Concentration [ng/ μ l] : 0
Upper Marker Concentration [ng/ μ l] : 0
Used Lower Marker for Quantitation
Standard Curve Fit is Logarithmic
Show Data Aligned to Lower Marker

Integrator Settings

Integration Start Time [s] : 19
Integration End Time [s] : 69
Slope Threshold : 0.6
Height Threshold [FU] : 0.2
Area Threshold : 0.1
Width Threshold [s] : 0.2
Baseline Plateau [s] : 6

Filter Settings

Filter Width [s] : 0.5
Polynomial Order : 4

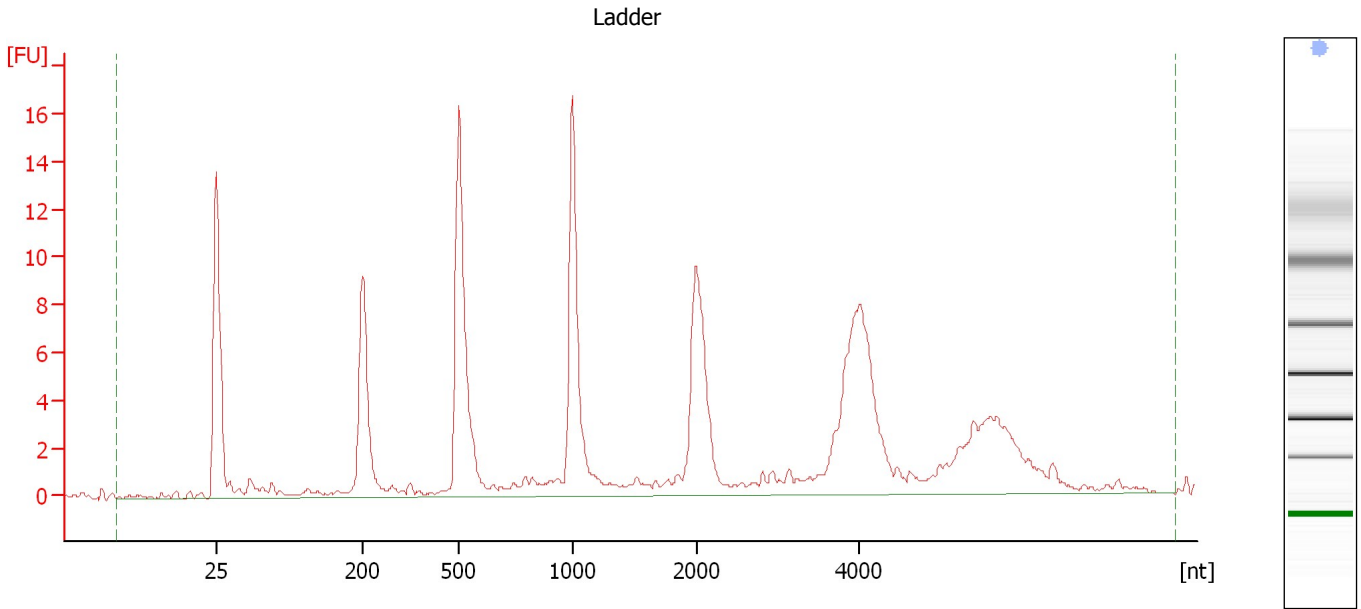
Ladder

Ladder Peak	Size
1	25
2	200
3	500
4	1000
5	2000
6	4000

Assay Class: Plant RNA Nano
Data Path: C:\...ents and Settings\Bioanalyzer\2015-05-13\2015-05-13_005.xad

Created: 5/13/2015 3:33:15 PM
Modified: 5/13/2015 3:56:24 PM

Electropherogram Summary



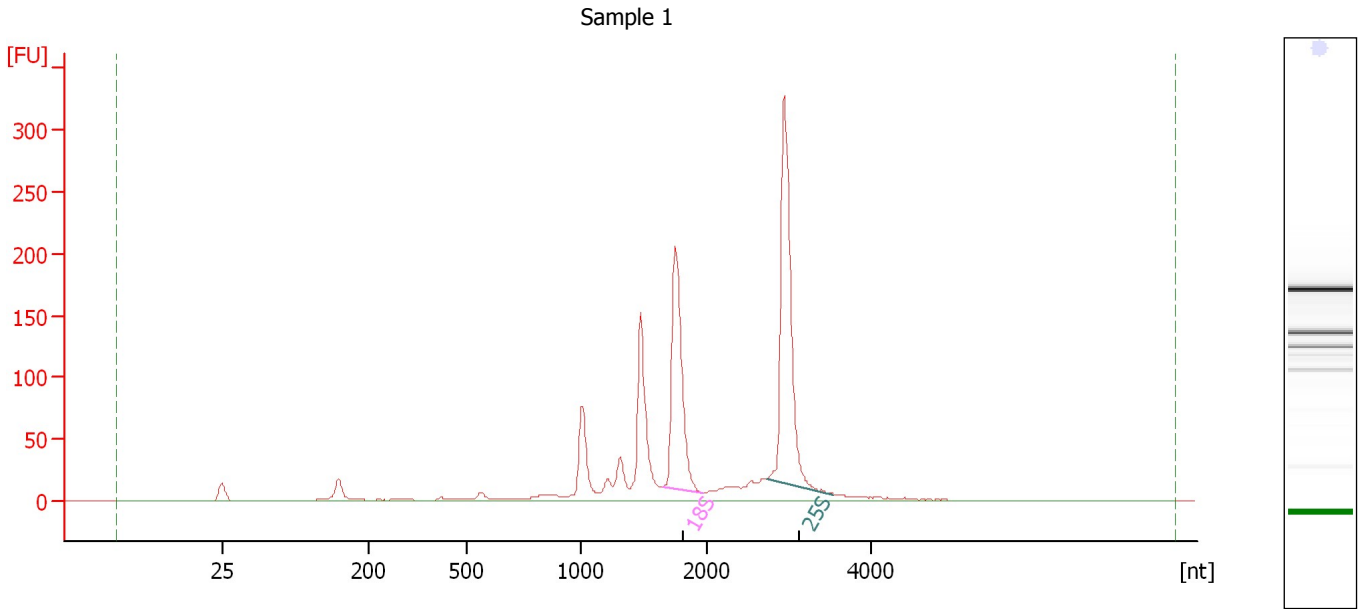
Overall Results for Ladder

RNA Area:	146.2	Result Flagging Color:	
RNA Concentration:	150 ng/μl	Result Flagging Label:	All Other Samples

Assay Class: Plant RNA Nano
Data Path: C:\...ents and Settings\Bioanalyzer\2015-05-13\2015-05-13_005.xad

Created: 5/13/2015 3:33:15 PM
Modified: 5/13/2015 3:56:24 PM

Electropherogram Summary Continued ...



Overall Results for sample 1 : Sample 1

RNA Area: 1,159.7 RNA Integrity Number (RIN): 7.9 (B.02.08)
RNA Concentration: 1,190 ng/μl Result Flagging Color:
rRNA Ratio [25s / 18s]: 1.4 Result Flagging Label: RIN: 7.90

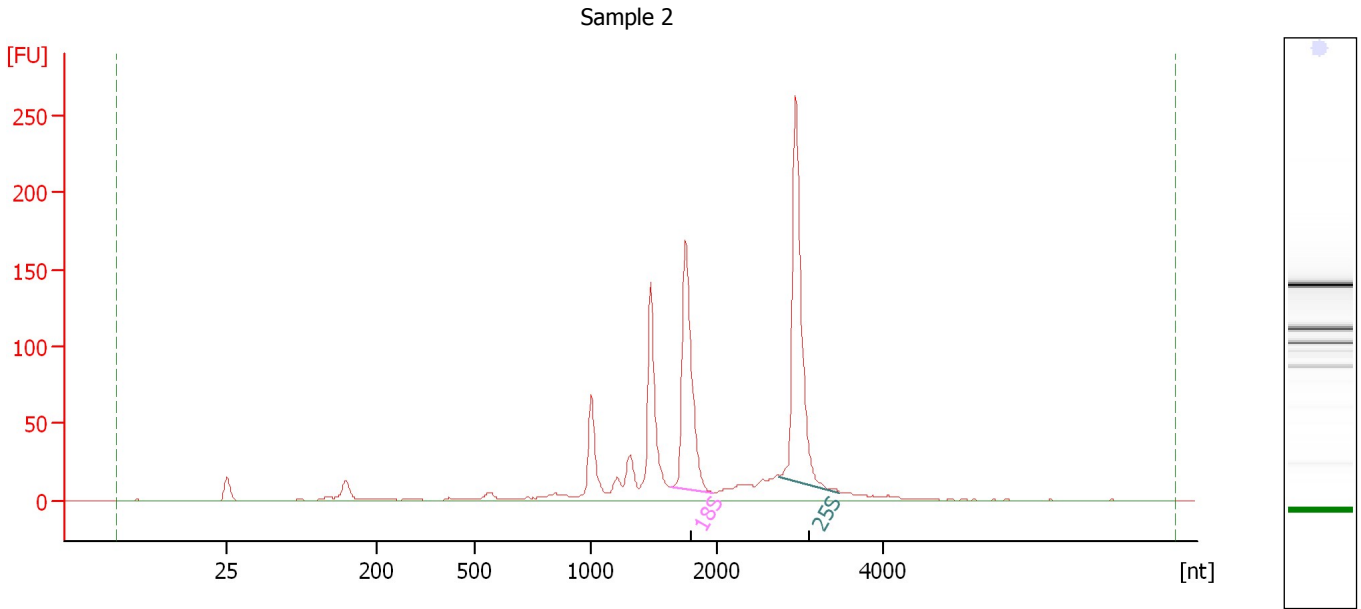
Fragment table for sample 1 : Sample 1

Name	Start Size [nt]	End Size [nt]	Area	% of total Area
18S	1,644	1,968	225.1	19.4
25S	2,729	3,544	323.6	27.9

Assay Class: Plant RNA Nano
Data Path: C:\...ents and Settings\Bioanalyzer\2015-05-13\2015-05-13_005.xad

Created: 5/13/2015 3:33:15 PM
Modified: 5/13/2015 3:56:24 PM

Electropherogram Summary Continued ...



Overall Results for sample 2 : Sample 2

RNA Area:	946.1	RNA Integrity Number (RIN):	7.8 (B.02.08)
RNA Concentration:	971 ng/μl	Result Flagging Color:	
rRNA Ratio [25s / 18s]:	1.3	Result Flagging Label:	RIN: 7.80

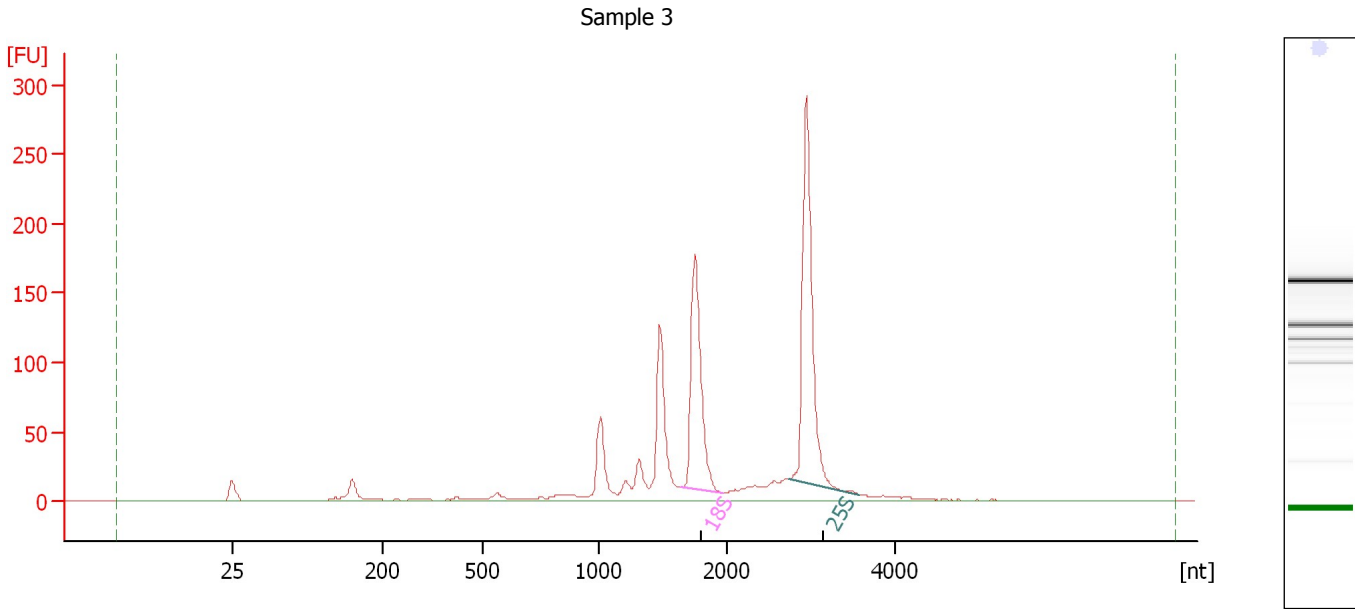
Fragment table for sample 2 : Sample 2

Name	Start Size [nt]	End Size [nt]	Area	% of total Area
18S	1,634	1,963	183.8	19.4
25S	2,751	3,468	241.9	25.6

Assay Class: Plant RNA Nano
Data Path: C:\...ents and Settings\Bioanalyzer\2015-05-13\2015-05-13_005.xad

Created: 5/13/2015 3:33:15 PM
Modified: 5/13/2015 3:56:24 PM

Electropherogram Summary Continued ...



Overall Results for sample 3 : Sample 3

RNA Area:	996.4	RNA Integrity Number (RIN):	8 (B.02.08)
RNA Concentration:	1,022 ng/μl	Result Flagging Color:	
rRNA Ratio [25s / 18s]:	1.4	Result Flagging Label:	RIN:8

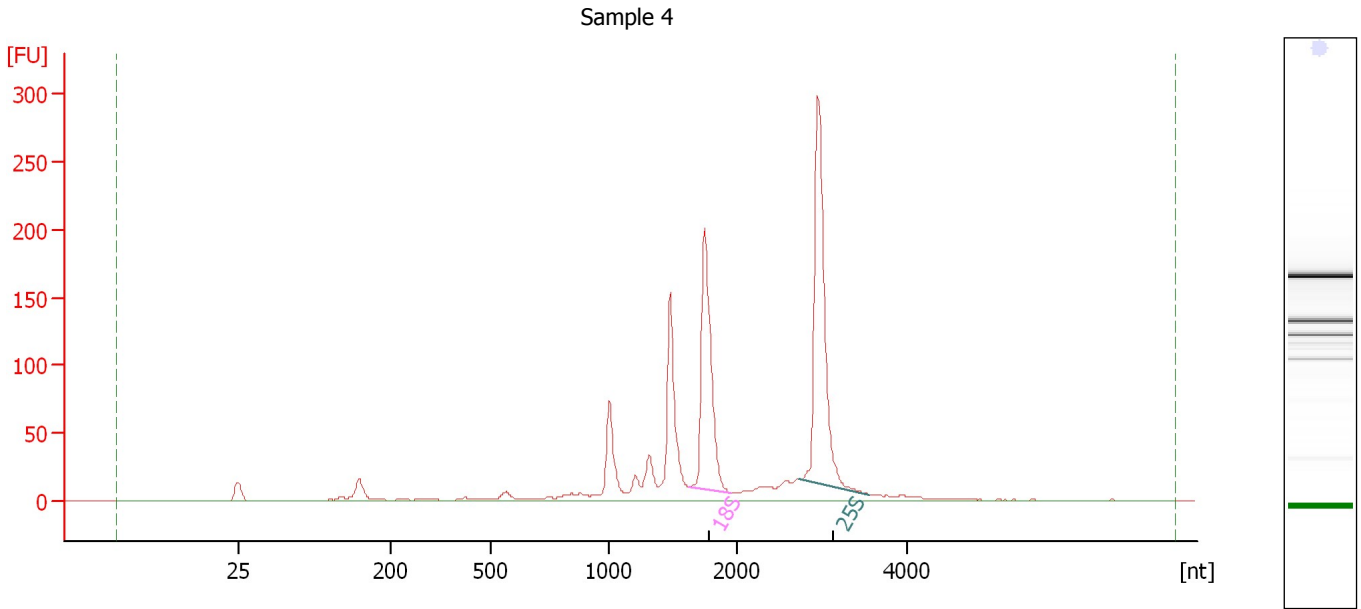
Fragment table for sample 3 : Sample 3

Name	Start Size [nt]	End Size [nt]	Area	% of total Area
18S	1,632	1,967	192.8	19.4
25S	2,723	3,572	277.6	27.9

Assay Class: Plant RNA Nano
Data Path: C:\...ents and Settings\Bioanalyzer\2015-05-13\2015-05-13_005.xad

Created: 5/13/2015 3:33:15 PM
Modified: 5/13/2015 3:56:24 PM

Electropherogram Summary Continued ...



Overall Results for sample 4 : Sample 4

RNA Area:	1,061.4	RNA Integrity Number (RIN):	7.8 (B.02.08)
RNA Concentration:	1,089 ng/μl	Result Flagging Color:	
rRNA Ratio [25s / 18s]:	1.4	Result Flagging Label:	RIN: 7.80

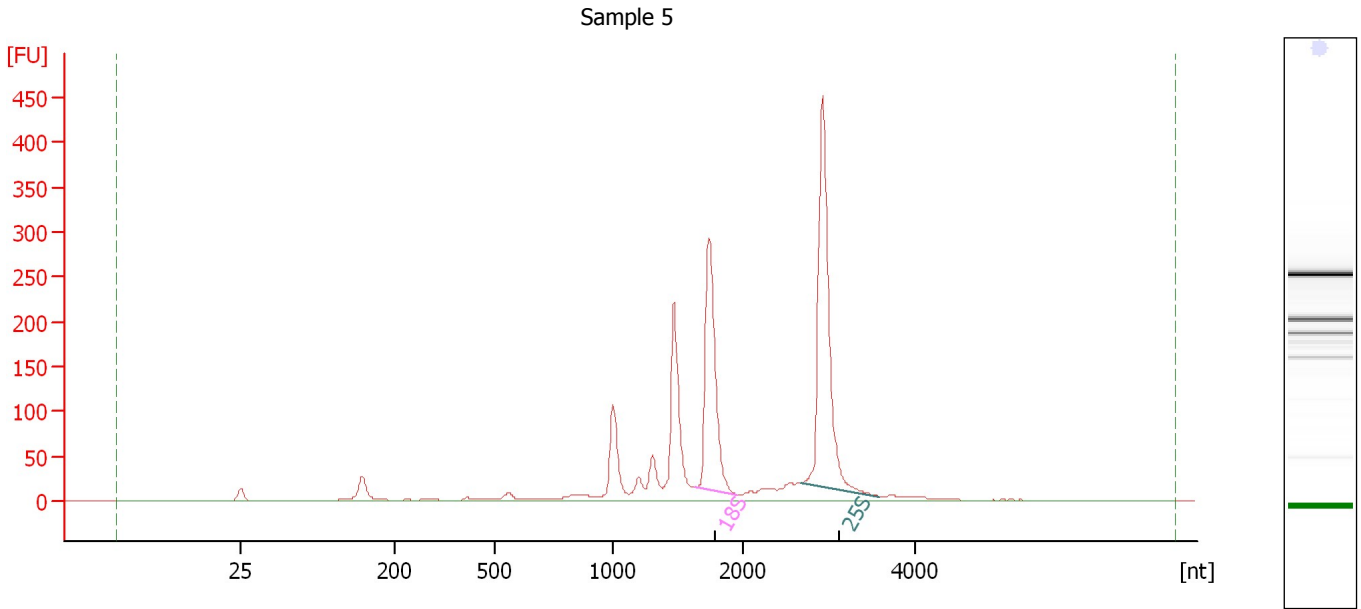
Fragment table for sample 4 : Sample 4

Name	Start Size [nt]	End Size [nt]	Area	% of total Area
18S	1,630	1,953	209.5	19.7
25S	2,733	3,536	287.0	27.0

Assay Class: Plant RNA Nano
Data Path: C:\...ents and Settings\Bioanalyzer\2015-05-13\2015-05-13_005.xad

Created: 5/13/2015 3:33:15 PM
Modified: 5/13/2015 3:56:24 PM

Electropherogram Summary Continued ...



Overall Results for sample 5 : Sample 5

RNA Area:	1,562.6	RNA Integrity Number (RIN):	7.9 (B.02.08)
RNA Concentration:	1,603 ng/μl	Result Flagging Color:	
rRNA Ratio [25s / 18s]:	1.5	Result Flagging Label:	RIN: 7.90

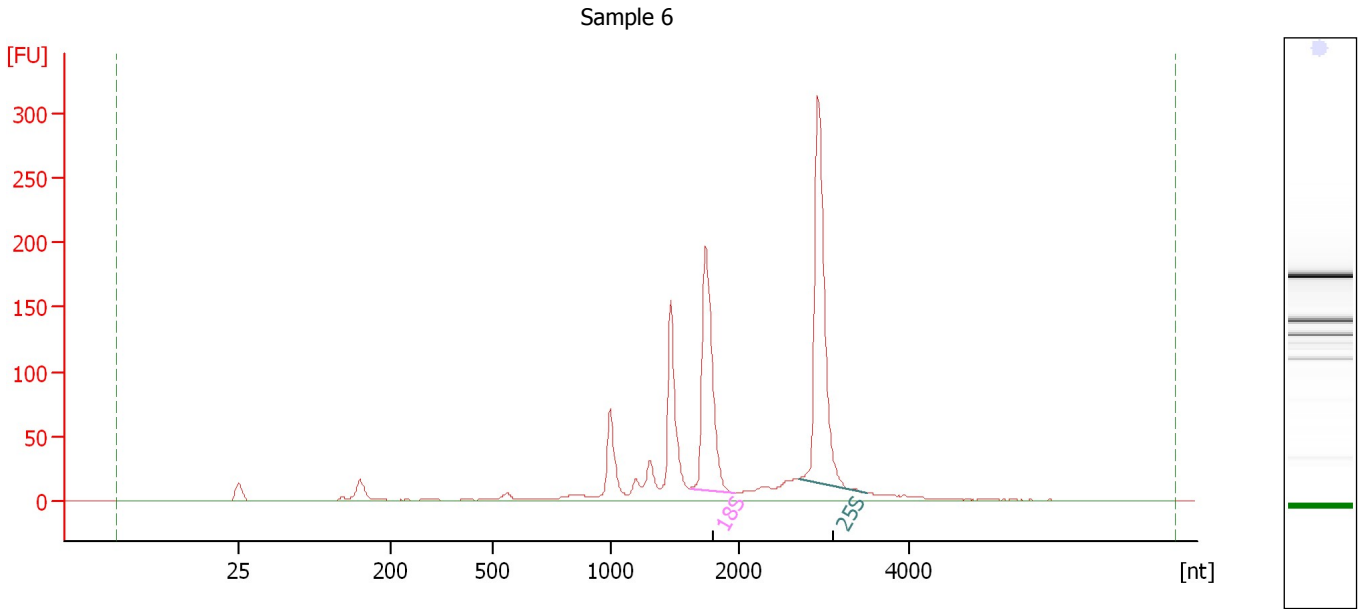
Fragment table for sample 5 : Sample 5

Name	Start Size [nt]	End Size [nt]	Area	% of total Area
18S	1,618	1,947	312.5	20.0
25S	2,681	3,592	456.3	29.2

Assay Class: Plant RNA Nano
Data Path: C:\...ents and Settings\Bioanalyzer\2015-05-13\2015-05-13_005.xad

Created: 5/13/2015 3:33:15 PM
Modified: 5/13/2015 3:56:24 PM

Electropherogram Summary Continued ...



Overall Results for sample 6 : Sample 6

RNA Area:	1,082.5	RNA Integrity Number (RIN):	8 (B.02.08)
RNA Concentration:	1,111 ng/μl	Result Flagging Color:	
rRNA Ratio [25s / 18s]:	1.4	Result Flagging Label:	RIN:8

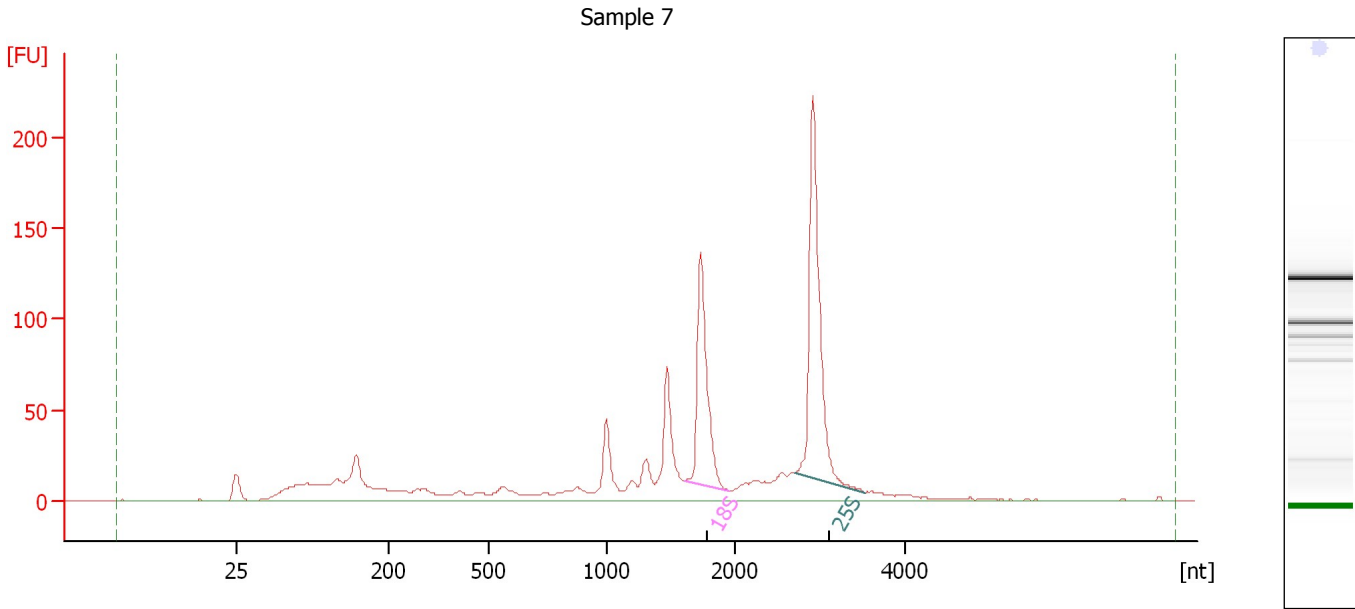
Fragment table for sample 6 : Sample 6

Name	Start Size [nt]	End Size [nt]	Area	% of total Area
18S	1,623	1,962	217.7	20.1
25S	2,694	3,496	298.0	27.5

Assay Class: Plant RNA Nano
Data Path: C:\...ents and Settings\Bioanalyzer\2015-05-13\2015-05-13_005.xad

Created: 5/13/2015 3:33:15 PM
Modified: 5/13/2015 3:56:24 PM

Electropherogram Summary Continued ...



Overall Results for sample 7 : Sample 7

RNA Area:	1,052.3	RNA Integrity Number (RIN):	7.9 (B.02.08)
RNA Concentration:	1,080 ng/μl	Result Flagging Color:	
rRNA Ratio [25s / 18s]:	1.5	Result Flagging Label:	RIN: 7.90

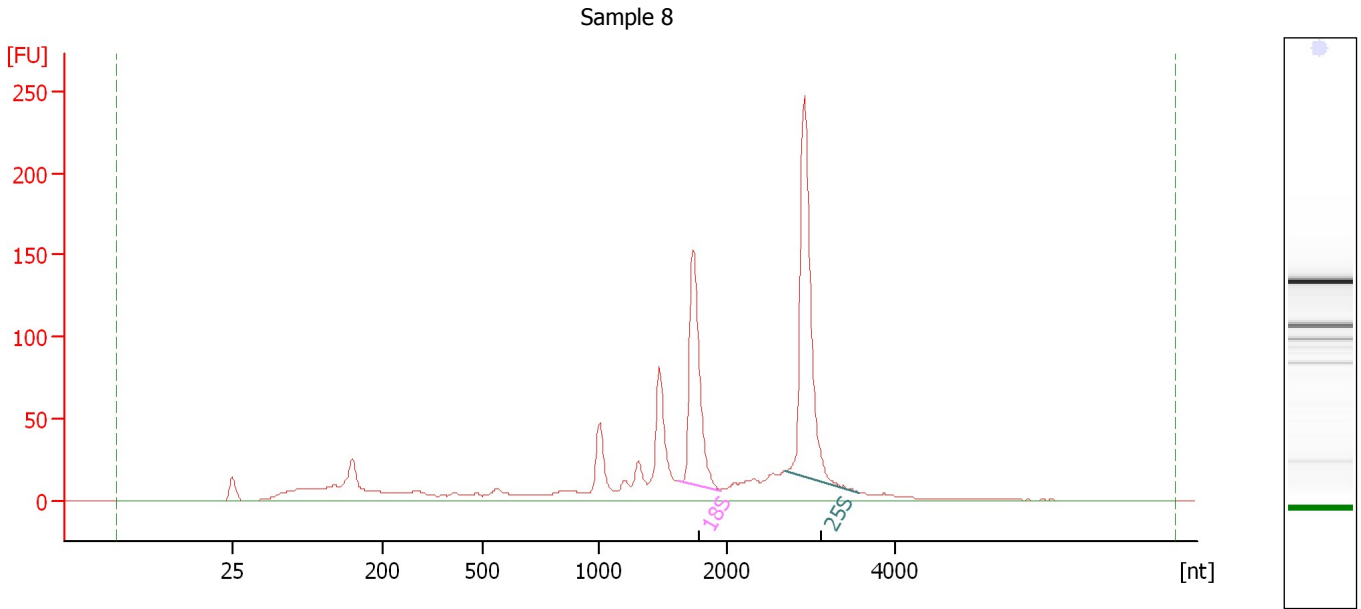
Fragment table for sample 7 : Sample 7

Name	Start Size [nt]	End Size [nt]	Area	% of total Area
18S	1,612	1,953	144.5	13.7
25S	2,708	3,526	223.2	21.2

Assay Class: Plant RNA Nano
Data Path: C:\...ents and Settings\Bioanalyzer\2015-05-13\2015-05-13_005.xad

Created: 5/13/2015 3:33:15 PM
Modified: 5/13/2015 3:56:24 PM

Electropherogram Summary Continued ...



Overall Results for sample 8 : Sample 8

RNA Area: 1,078.2 RNA Integrity Number (RIN): 7.9 (B.02.08)
RNA Concentration: 1,106 ng/μl Result Flagging Color:
rRNA Ratio [25s / 18s]: 1.5 Result Flagging Label: RIN: 7.90

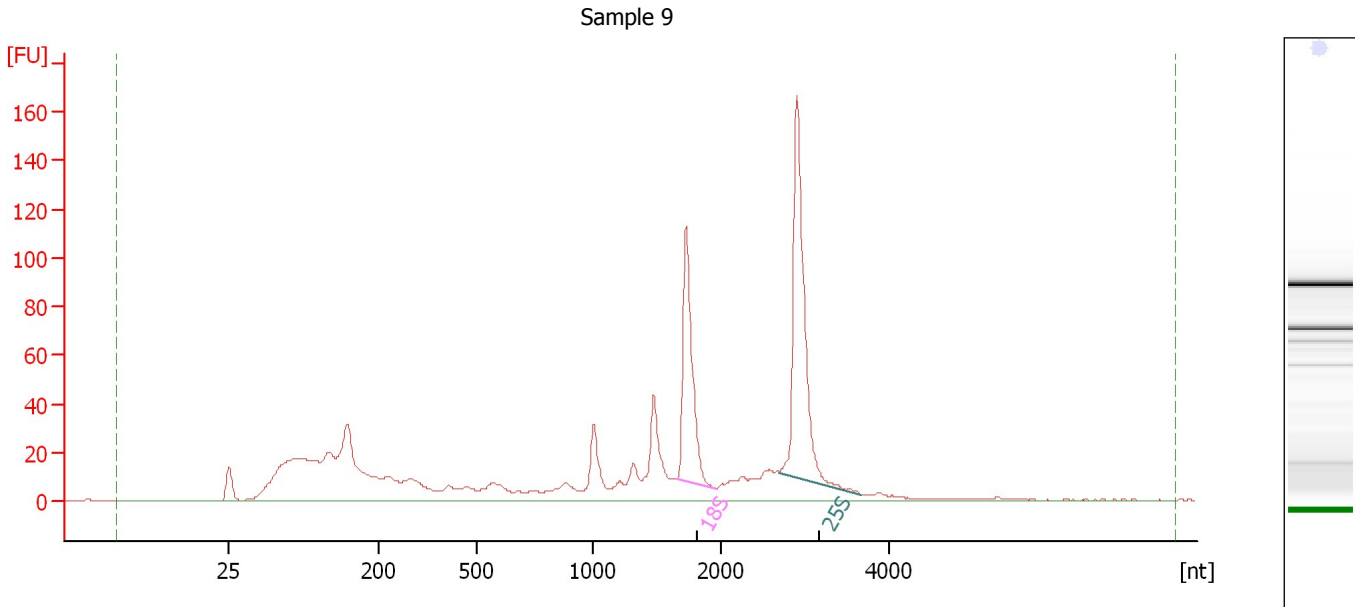
Fragment table for sample 8 : Sample 8

Name	Start Size [nt]	End Size [nt]	Area	% of total Area
18S	1,624	1,950	164.4	15.2
25S	2,698	3,560	248.0	23.0

Assay Class: Plant RNA Nano
Data Path: C:\...ents and Settings\Bioanalyzer\2015-05-13\2015-05-13_005.xad

Created: 5/13/2015 3:33:15 PM
Modified: 5/13/2015 3:56:24 PM

Electropherogram Summary Continued ...



Overall Results for sample 9 : Sample 9

RNA Area:	1,022.1	RNA Integrity Number (RIN):	7.6 (B.02.08)
RNA Concentration:	1,049 ng/μl	Result Flagging Color:	
rRNA Ratio [25s / 18s]:	1.6	Result Flagging Label:	RIN: 7.60

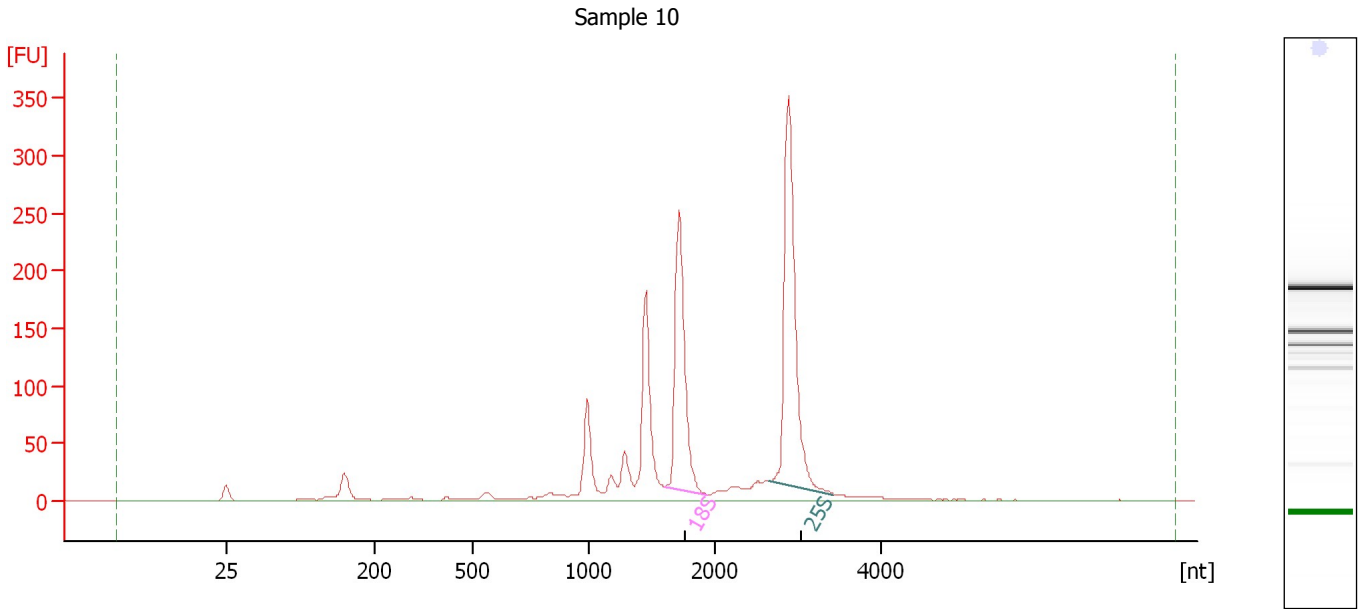
Fragment table for sample 9 : Sample 9

Name	Start Size [nt]	End Size [nt]	Area	% of total Area
18S	1,653	1,965	113.0	11.1
25S	2,699	3,668	178.6	17.5

Assay Class: Plant RNA Nano
Data Path: C:\...ents and Settings\Bioanalyzer\2015-05-13\2015-05-13_005.xad

Created: 5/13/2015 3:33:15 PM
Modified: 5/13/2015 3:56:24 PM

Electropherogram Summary Continued ...



Overall Results for sample 10 : Sample 10

RNA Area:	1,303.8	RNA Integrity Number (RIN):	7.8 (B.02.08)
RNA Concentration:	1,338 ng/μl	Result Flagging Color:	
rRNA Ratio [25s / 18s]:	1.4	Result Flagging Label:	RIN: 7.80

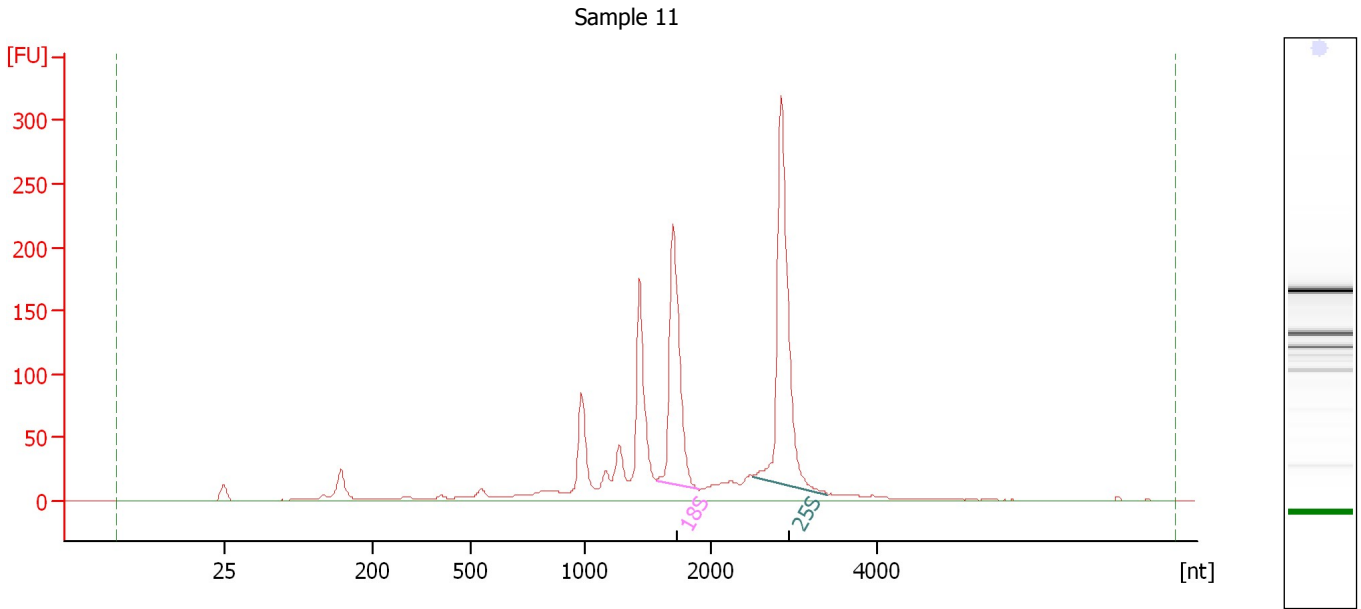
Fragment table for sample 10 : Sample 10

Name	Start Size [nt]	End Size [nt]	Area	% of total Area
18S	1,607	1,937	265.2	20.3
25S	2,662	3,432	377.1	28.9

Assay Class: Plant RNA Nano
 Data Path: C:\...ents and Settings\Bioanalyzer\2015-05-13\2015-05-13_005.xad

Created: 5/13/2015 3:33:15 PM
 Modified: 5/13/2015 3:56:24 PM

Electropherogram Summary Continued ...



Overall Results for sample 11 : Sample 11

RNA Area:	1,352.8	RNA Integrity Number (RIN):	7.7 (B.02.08)
RNA Concentration:	1,388 ng/μl	Result Flagging Color:	
rRNA Ratio [25s / 18s]:	1.5	Result Flagging Label:	RIN: 7.70

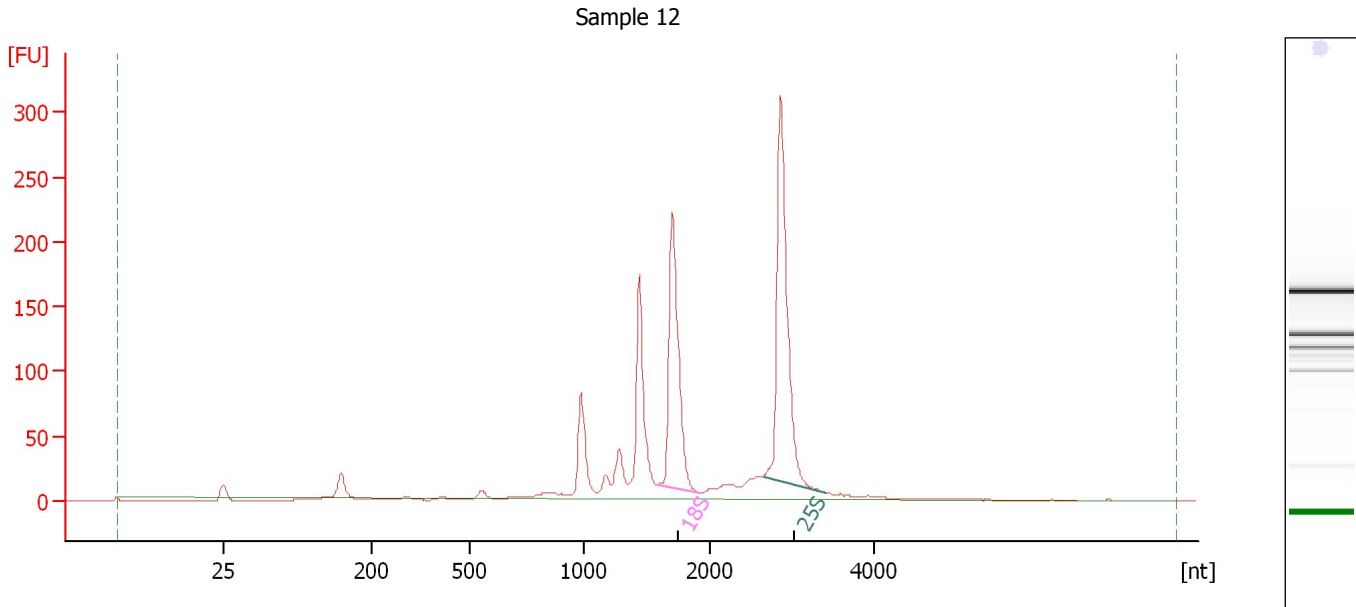
Fragment table for sample 11 : Sample 11

Name	Start Size [nt]	End Size [nt]	Area	% of total Area
18S	1,570	1,902	240.3	17.8
25S	2,508	3,410	350.2	25.9

Assay Class: Plant RNA Nano
Data Path: C:\...ents and Settings\Bioanalyzer\2015-05-13\2015-05-13_005.xad

Created: 5/13/2015 3:33:15 PM
Modified: 5/13/2015 3:56:24 PM

Electropherogram Summary Continued ...



Overall Results for sample 12 : Sample 12

RNA Area:	1,125.3	RNA Integrity Number (RIN):	7.7 (B.02.08)
RNA Concentration:	1,155 ng/μl	Result Flagging Color:	
rRNA Ratio [25s / 18s]:	1.4	Result Flagging Label:	RIN: 7.70

Fragment table for sample 12 : Sample 12

Name	Start Size [nt]	End Size [nt]	Area	% of total Area
18S	1,586	1,918	240.2	21.3
25S	2,651	3,412	327.7	29.1

Assay Class: Plant RNA Nano
Data Path: C:\...ents and Settings\Bioanalyzer\2015-05-13\2015-05-13_005.xad

Created: 5/13/2015 3:33:15 PM
Modified: 5/13/2015 3:56:24 PM

Gel Image

