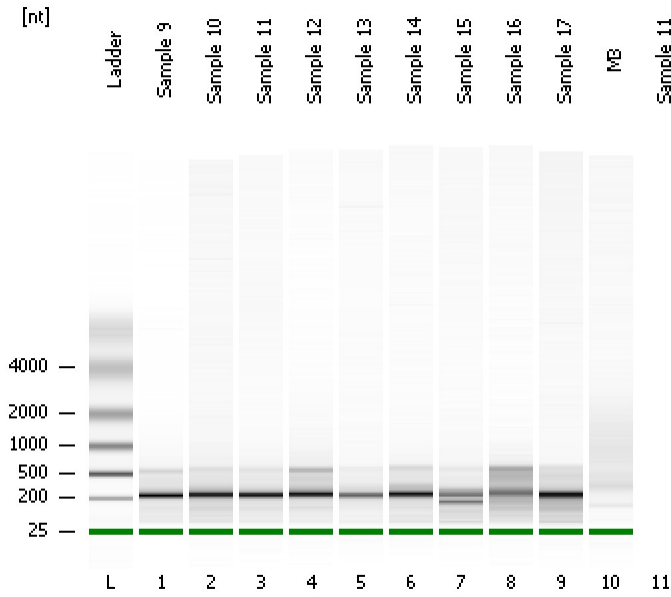


Assay Class: mRNA Pico  
Data Path: C:\...ents and Settings\Bioanalyzer\2015-05-19\2015-05-19\_001.xad

Created: 5/19/2015 9:59:20 AM  
Modified: 5/19/2015 10:23:35 AM

**Electrophoresis File Run Summary**



Instrument Information:

Instrument Name: DE13701086      Firmware: C.01.069  
Serial#: DE13701086      Type: G2938B

Assay Information:

Assay Origin Path: C:\Program Files\Agilent\2100 bioanalyzer\2100 expert\assays\RNA\mRNA Pico Series II.xsy

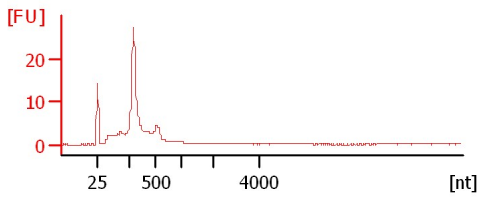
Assay Class: mRNA Pico  
Version: 2.6  
Assay Comments: mRNA Analysis pg sensitivity

© Copyright 2003 - 2009 Agilent Technologies, Inc.

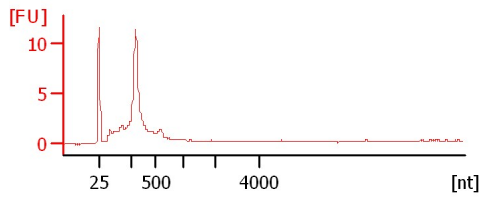
Chip Information:

Chip Lot #:   
Reagent Kit Lot #:   
Chip Comments:

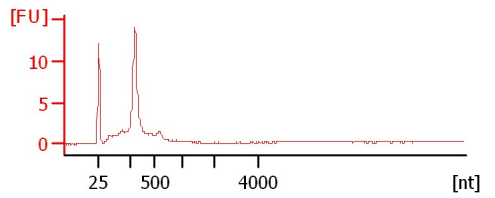
**Sample 9**



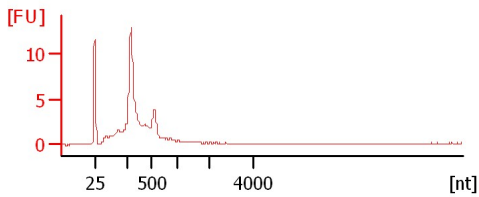
**Sample 10**



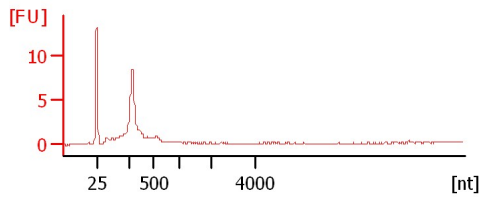
**Sample 11**



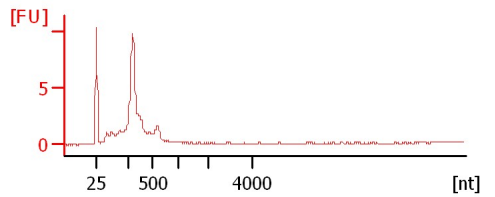
**Sample 12**



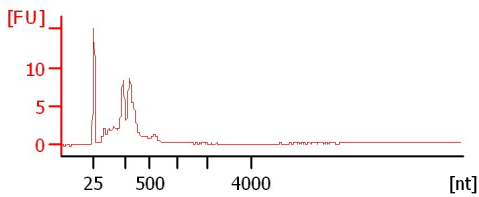
**Sample 13**



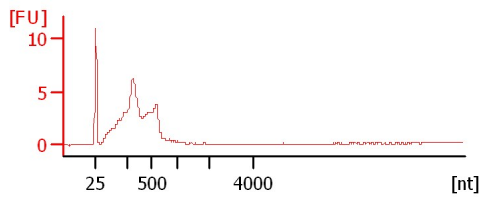
**Sample 14**



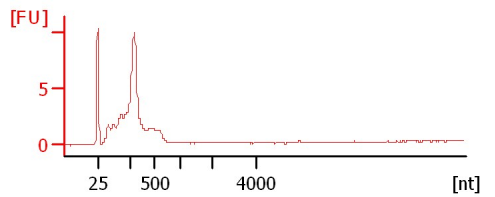
**Sample 15**



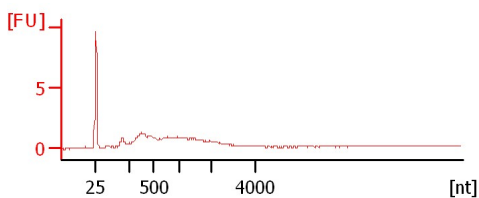
**Sample 16**



**Sample 17**



**M3**



Assay Class: mRNA Pico  
Data Path: C:\...ents and Settings\Bioanalyzer\2015-05-19\2015-05-19\_001.xad

Created: 5/19/2015 9:59:20 AM  
Modified: 5/19/2015 10:23:35 AM

**Electrophoresis File Run Summary (Chip Summary)**

Sample Name	Sample Comment	Status	Result Label	Result Color
Sample 9		✓		
Sample 10		✓		
Sample 11		✓		
Sample 12		✓		
Sample 13		✓		
Sample 14		✓		
Sample 15		✓		
Sample 16		✓		
Sample 17		✓		
M3		✓		
Sample 11				
Ladder		✓		

**Chip Lot #**

**Reagent Kit Lot #**

**Chip Comments :**

Assay Class: mRNA Pico  
Data Path: C:\...ents and Settings\Bioanalyzer\2015-05-19\2015-05-19\_001.xad

Created: 5/19/2015 9:59:20 AM  
Modified: 5/19/2015 10:23:35 AM

## Electrophoresis Assay Details

### General Analysis Settings

Number of Available Sample and Ladder Wells (Max.) : 12  
Minimum Visible Range [s] : 14  
Maximum Visible Range [s] : 85  
Start Analysis Time Range [s] : 15  
End Analysis Time Range [s] : 84  
Ladder Concentration [pg/ $\mu$ l] : 1000  
Lower Marker Concentration [pg/ $\mu$ l] : 0  
Upper Marker Concentration [pg/ $\mu$ l] : 0  
Used Lower Marker for Quantitation  
Standard Curve Fit is Logarithmic  
Show Data Aligned to Lower Marker

### Integrator Settings

Integration Start Time [s] : 15  
Integration End Time [s] : 84  
Slope Threshold : 0.2  
Height Threshold [FU] : 0.5  
Area Threshold : 0.1  
Width Threshold [s] : 0.2  
Baseline Plateau [s] : 0.5

### Filter Settings

Filter Width [s] : 0.5  
Polynomial Order : 4

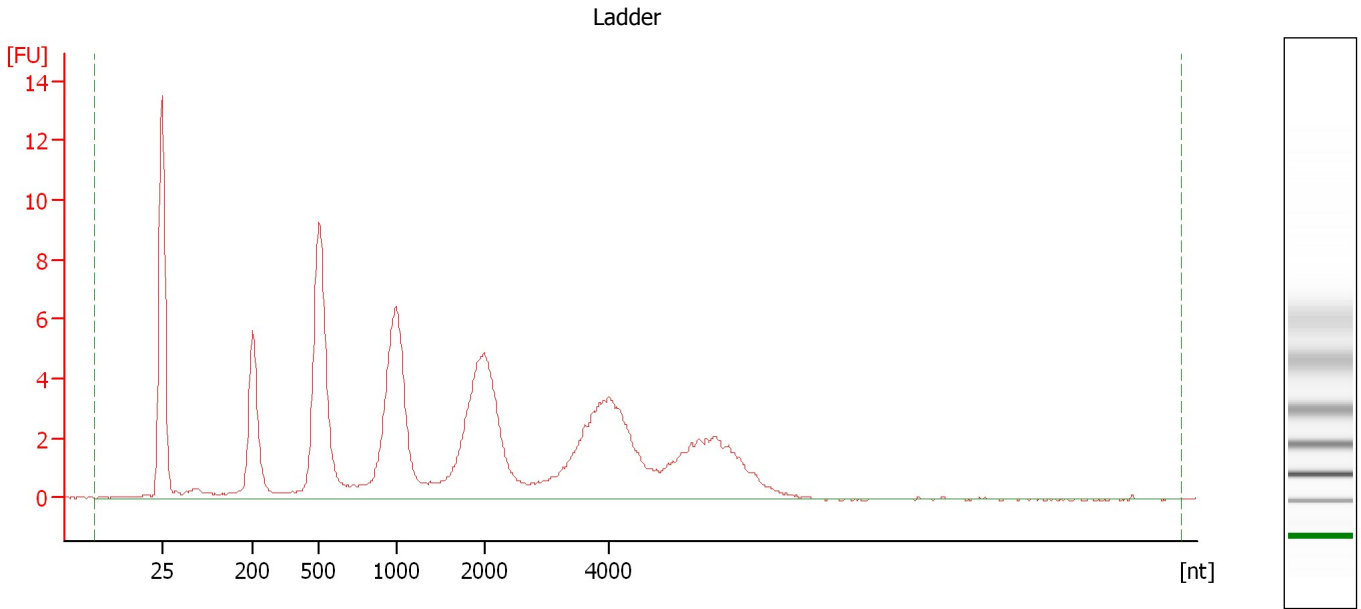
### Ladder

Ladder Peak	Size
1	25
2	200
3	500
4	1000
5	2000
6	4000

Assay Class: mRNA Pico  
Data Path: C:\...ents and Settings\Bioanalyzer\2015-05-19\2015-05-19\_001.xad

Created: 5/19/2015 9:59:20 AM  
Modified: 5/19/2015 10:23:35 AM

**Electropherogram Summary**



**Overall Results for Ladder**

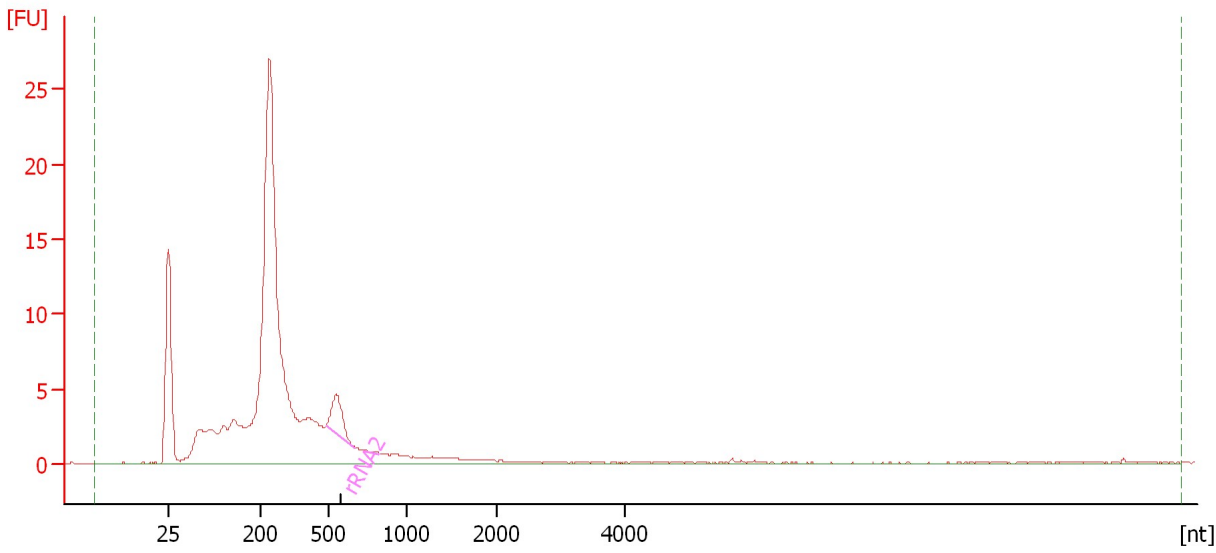
RNA Area: 157.5                      RNA Concentration: 1,000 pg/μl

Assay Class: mRNA Pico  
Data Path: C:\...ents and Settings\Bioanalyzer\2015-05-19\2015-05-19\_001.xad

Created: 5/19/2015 9:59:20 AM  
Modified: 5/19/2015 10:23:35 AM

**Electropherogram Summary Continued ...**

Sample 9



**Overall Results for sample 1 : Sample 9**

RNA Area: 194.9                      rRNA Contamination: 3.2 %  
RNA Concentration: 1,237 pg/μl

**Fragment table for sample 1 : Sample 9**

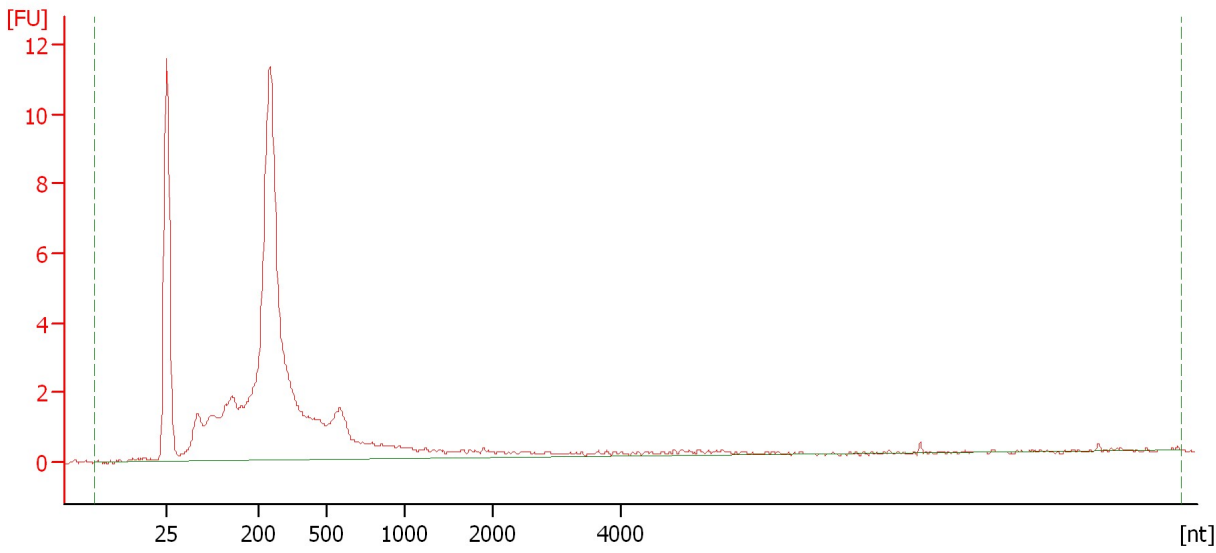
Name	Start Size [nt]	End Size [nt]	Area	% of total Area
rRNA2	489	663	6.3	3.2

Assay Class: mRNA Pico  
Data Path: C:\...ents and Settings\Bioanalyzer\2015-05-19\2015-05-19\_001.xad

Created: 5/19/2015 9:59:20 AM  
Modified: 5/19/2015 10:23:35 AM

**Electropherogram Summary Continued ...**

Sample 10



**Overall Results for sample 2 : Sample 10**

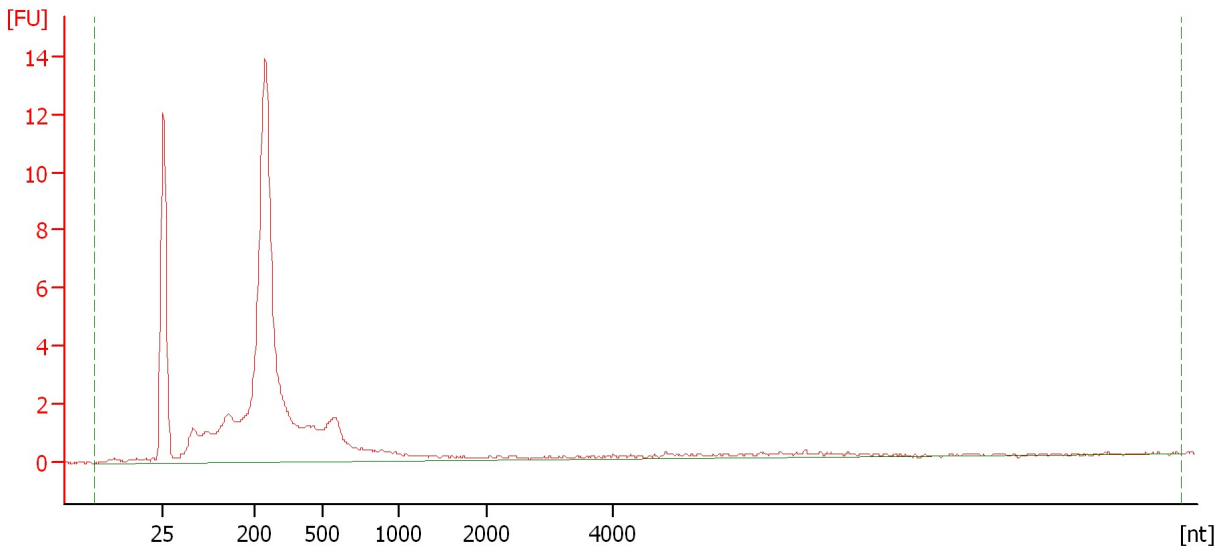
RNA Area: 99.4                      rRNA Contamination: 0.0 %  
RNA Concentration: 631 pg/μl

Assay Class: mRNA Pico  
Data Path: C:\...ents and Settings\Bioanalyzer\2015-05-19\2015-05-19\_001.xad

Created: 5/19/2015 9:59:20 AM  
Modified: 5/19/2015 10:23:35 AM

**Electropherogram Summary Continued ...**

Sample 11



**Overall Results for sample 3 : Sample 11**

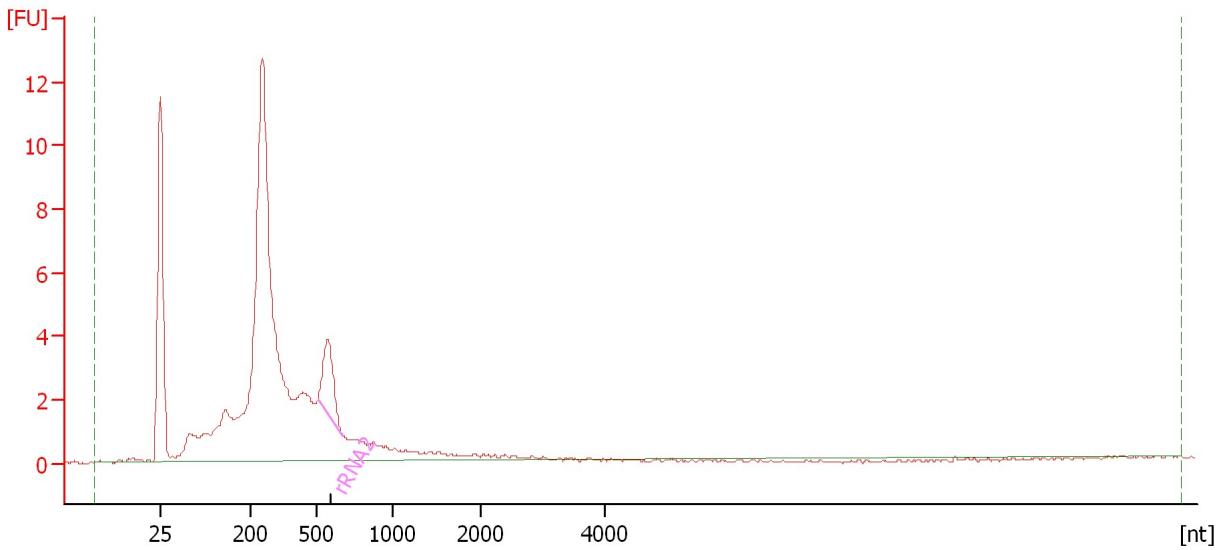
RNA Area: 102.0                      rRNA Contamination: 0.0 %  
RNA Concentration: 647 pg/μl

Assay Class: mRNA Pico  
Data Path: C:\...ents and Settings\Bioanalyzer\2015-05-19\2015-05-19\_001.xad

Created: 5/19/2015 9:59:20 AM  
Modified: 5/19/2015 10:23:35 AM

**Electropherogram Summary Continued ...**

Sample 12



**Overall Results for sample 4 : Sample 12**

RNA Area: 109.9                      rRNA Contamination: 5.3 %  
RNA Concentration: 698 pg/μl

**Fragment table for sample 4 : Sample 12**

Name	Start Size [nt]	End Size [nt]	Area	% of total Area
rRNA2	505	667	5.8	5.3

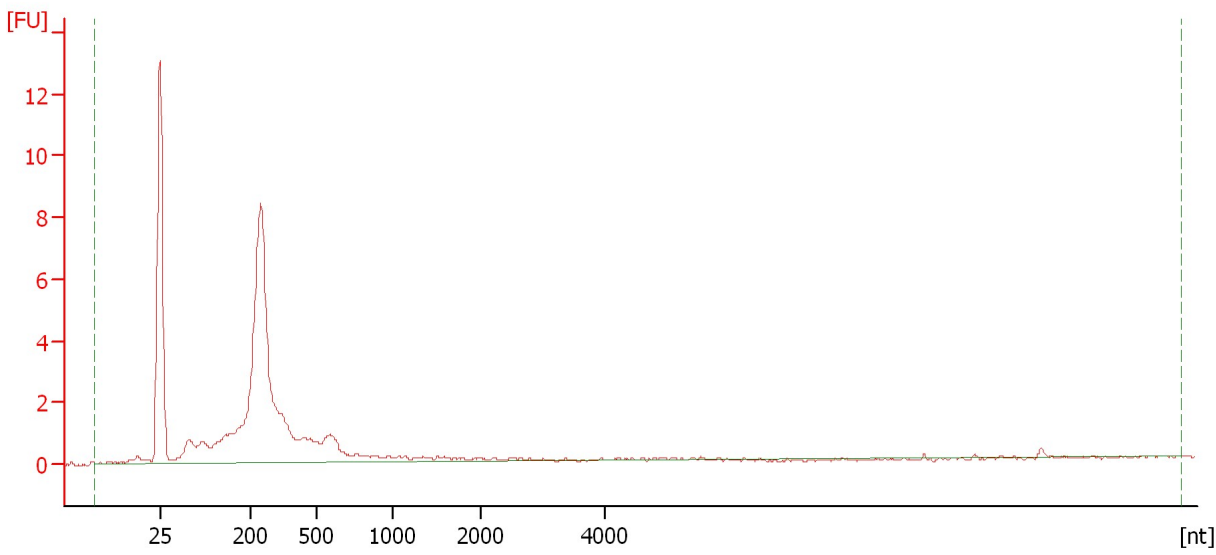


Assay Class: mRNA Pico  
Data Path: C:\...ents and Settings\Bioanalyzer\2015-05-19\2015-05-19\_001.xad

Created: 5/19/2015 9:59:20 AM  
Modified: 5/19/2015 10:23:35 AM

**Electropherogram Summary Continued ...**

Sample 13



**Overall Results for sample 5 : Sample 13**

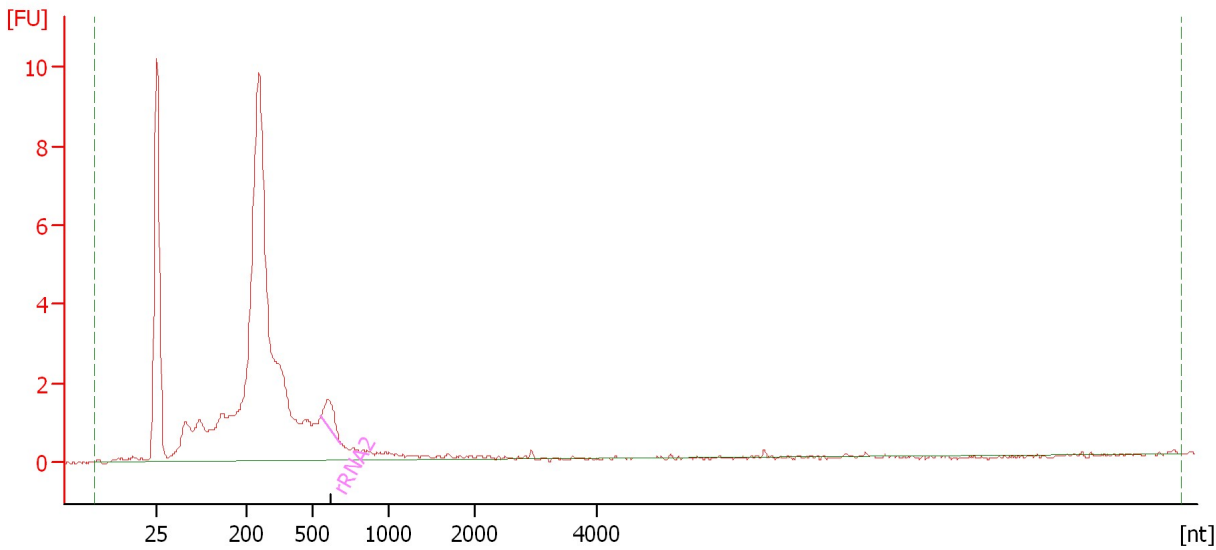
RNA Area: 60.5                      rRNA Contamination: 0.0 %  
RNA Concentration: 384 pg/μl

Assay Class: mRNA Pico  
Data Path: C:\...ents and Settings\Bioanalyzer\2015-05-19\2015-05-19\_001.xad

Created: 5/19/2015 9:59:20 AM  
Modified: 5/19/2015 10:23:35 AM

**Electropherogram Summary Continued ...**

Sample 14



**Overall Results for sample 6 : Sample 14**

RNA Area: 79.4                      rRNA Contamination: 2.0 %  
RNA Concentration: 504 pg/μl

**Fragment table for sample 6 : Sample 14**

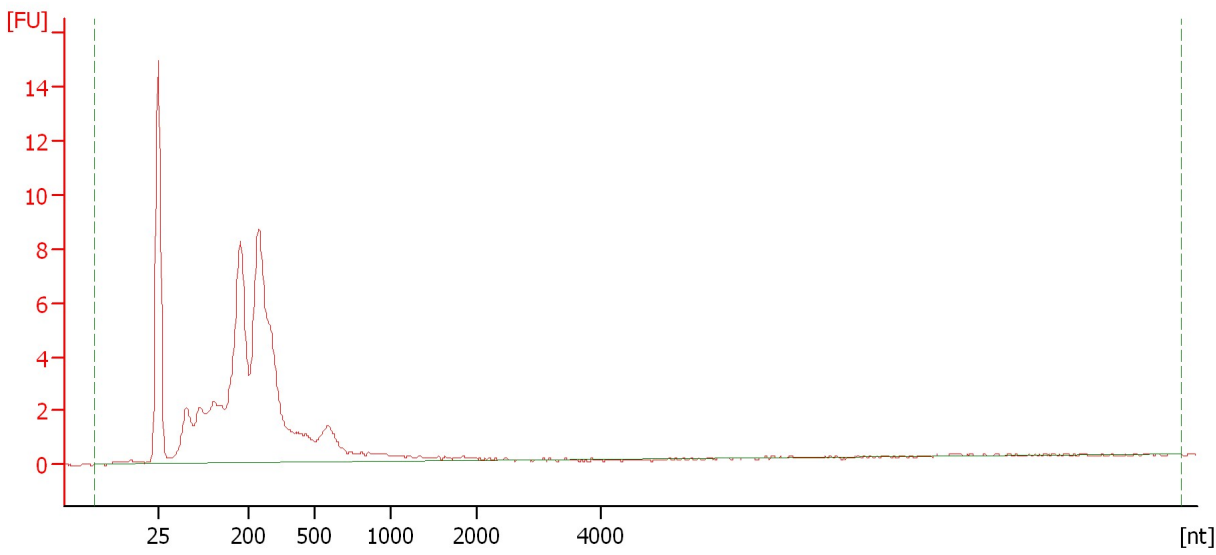
Name	Start Size [nt]	End Size [nt]	Area	% of total Area
rRNA2	557	690	1.6	2.0

Assay Class: mRNA Pico  
Data Path: C:\...ents and Settings\Bioanalyzer\2015-05-19\2015-05-19\_001.xad

Created: 5/19/2015 9:59:20 AM  
Modified: 5/19/2015 10:23:35 AM

**Electropherogram Summary Continued ...**

Sample 15



**Overall Results for sample 7 : Sample 15**

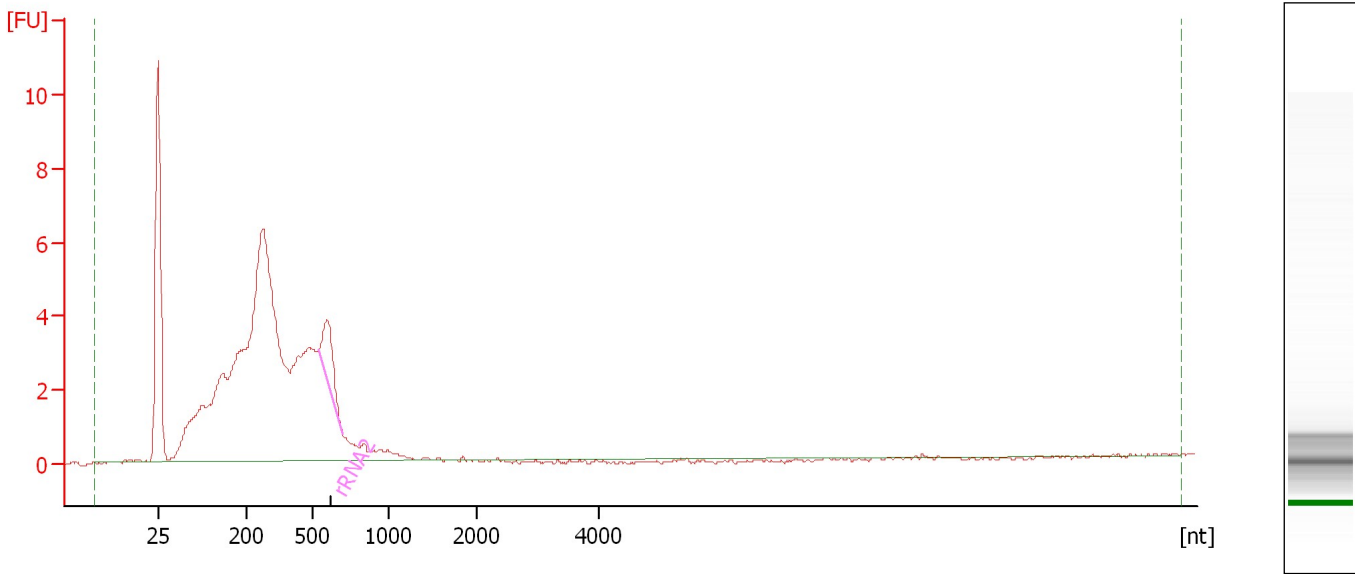
RNA Area: 114.1                      rRNA Contamination: 0.0 %  
RNA Concentration: 724 pg/μl

Assay Class: mRNA Pico  
Data Path: C:\...ents and Settings\Bioanalyzer\2015-05-19\2015-05-19\_001.xad

Created: 5/19/2015 9:59:20 AM  
Modified: 5/19/2015 10:23:35 AM

**Electropherogram Summary Continued ...**

Sample 16



**Overall Results for sample 8 : Sample 16**

RNA Area: 109.5                      rRNA Contamination: 3.3 %  
RNA Concentration: 695 pg/μl

**Fragment table for sample 8 : Sample 16**

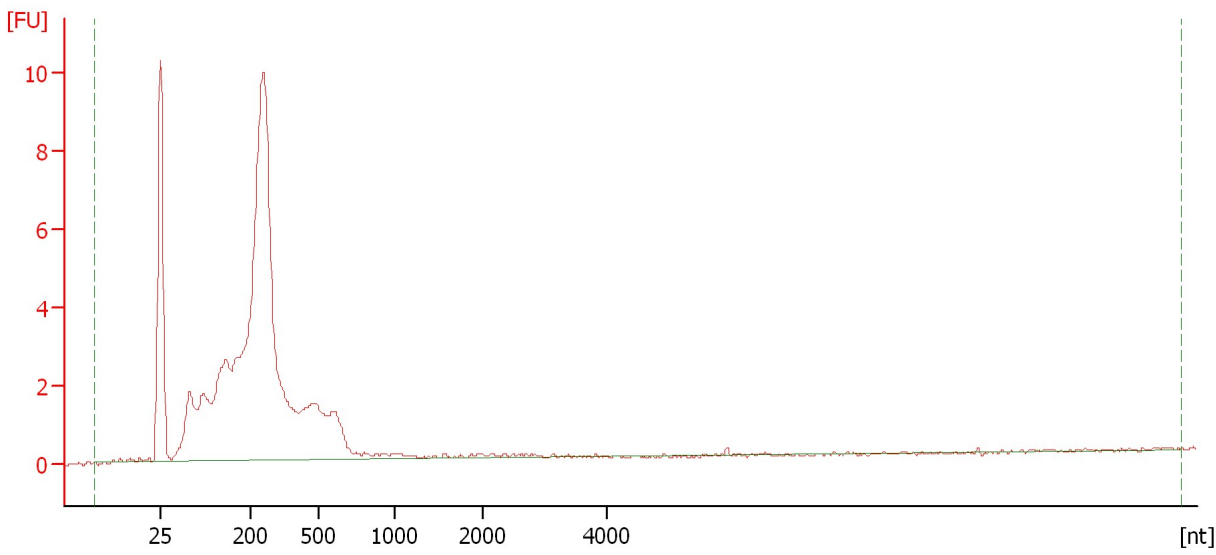
Name	Start Size [nt]	End Size [nt]	Area	% of total Area
rRNA2	539	692	3.7	3.3

Assay Class: mRNA Pico  
Data Path: C:\...ents and Settings\Bioanalyzer\2015-05-19\2015-05-19\_001.xad

Created: 5/19/2015 9:59:20 AM  
Modified: 5/19/2015 10:23:35 AM

**Electropherogram Summary Continued ...**

Sample 17



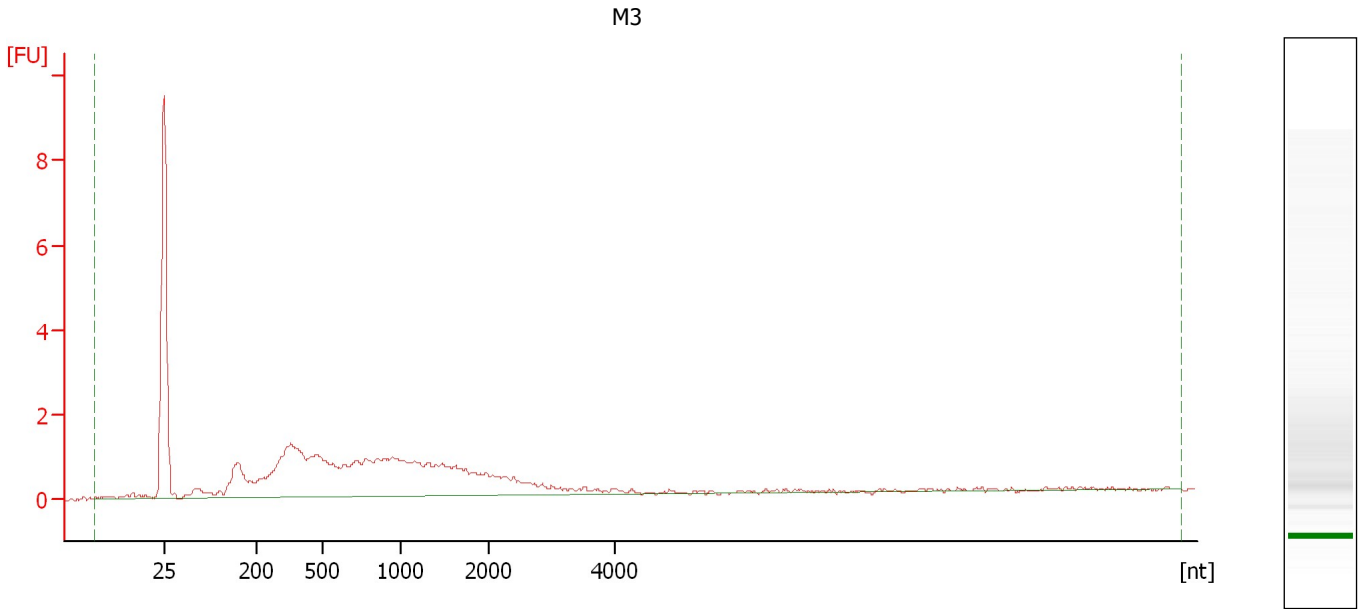
**Overall Results for sample 9 : Sample 17**

RNA Area: 101.1                      rRNA Contamination: 0.0 %  
RNA Concentration: 642 pg/μl

Assay Class: mRNA Pico  
Data Path: C:\...ents and Settings\Bioanalyzer\2015-05-19\2015-05-19\_001.xad

Created: 5/19/2015 9:59:20 AM  
Modified: 5/19/2015 10:23:35 AM

**Electropherogram Summary Continued ...**



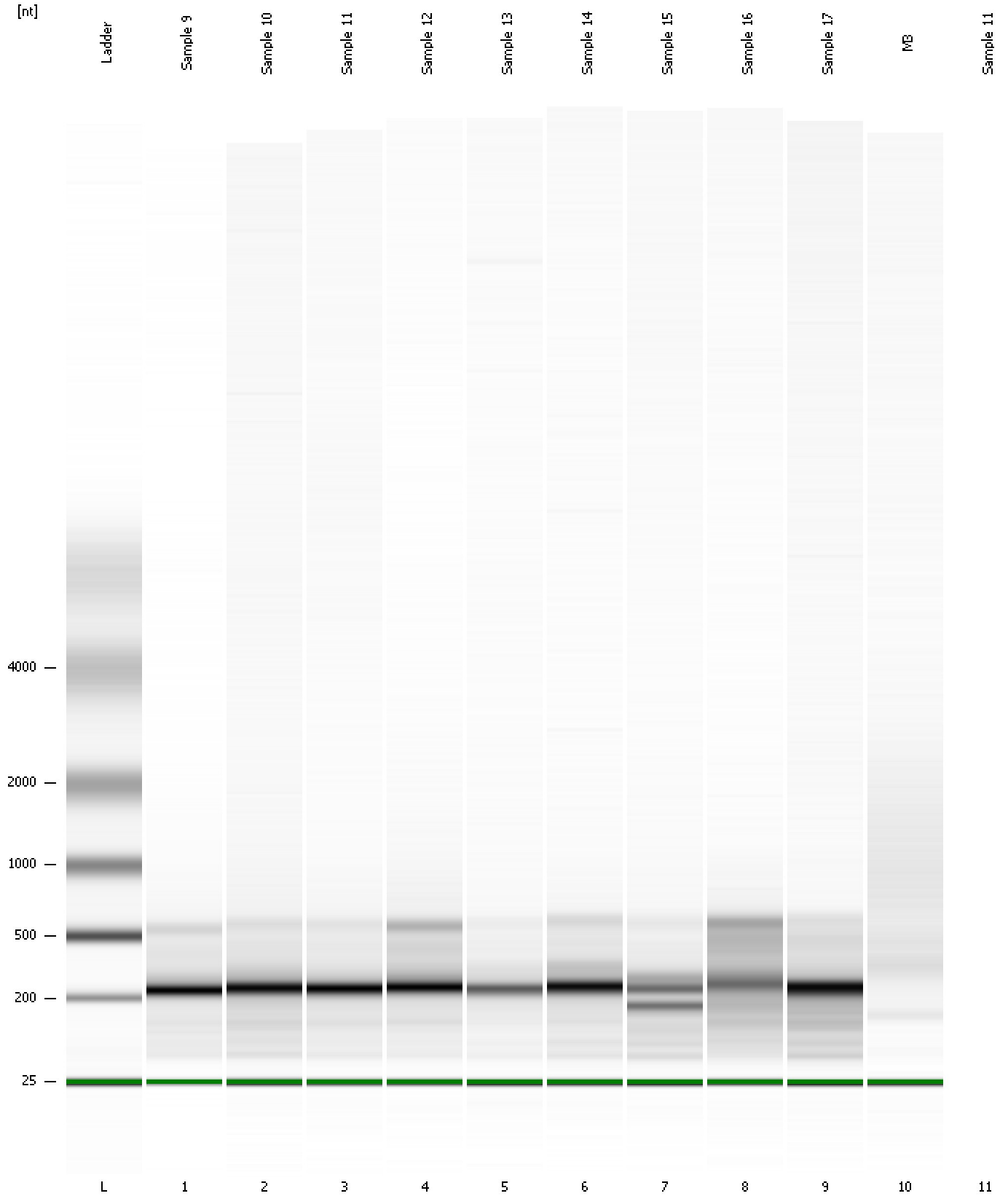
**Overall Results for sample 10 : M3**

RNA Area:	45.2	rRNA Contamination:	0.0 %
RNA Concentration:	287 pg/μl		

Assay Class: mRNA Pico  
Data Path: C:\...ents and Settings\Bioanalyzer\2015-05-19\2015-05-19\_001.xad

Created: 5/19/2015 9:59:20 AM  
Modified: 5/19/2015 10:23:35 AM

**Gel Image**



Assay Class: mRNA Pico  
Data Path: C:\...ents and Settings\Bioanalyzer\2015-05-19\2015-05-19\_001.xad

Created: 5/19/2015 9:59:20 AM  
Modified: 5/19/2015 10:23:35 AM

**Invalid Samples**

Sample 11 has not been run, no results available.