

Assay Class: High Sensitivity DNA Assay
Data Path: C:\...ents and Settings\Bioanalyzer\2015-05-20\2015-05-20_004.xad

Created: 5/20/2015 1:13:40 PM
Modified: 5/20/2015 1:55:02 PM

Electrophoresis File Run Summary

Instrument Information:

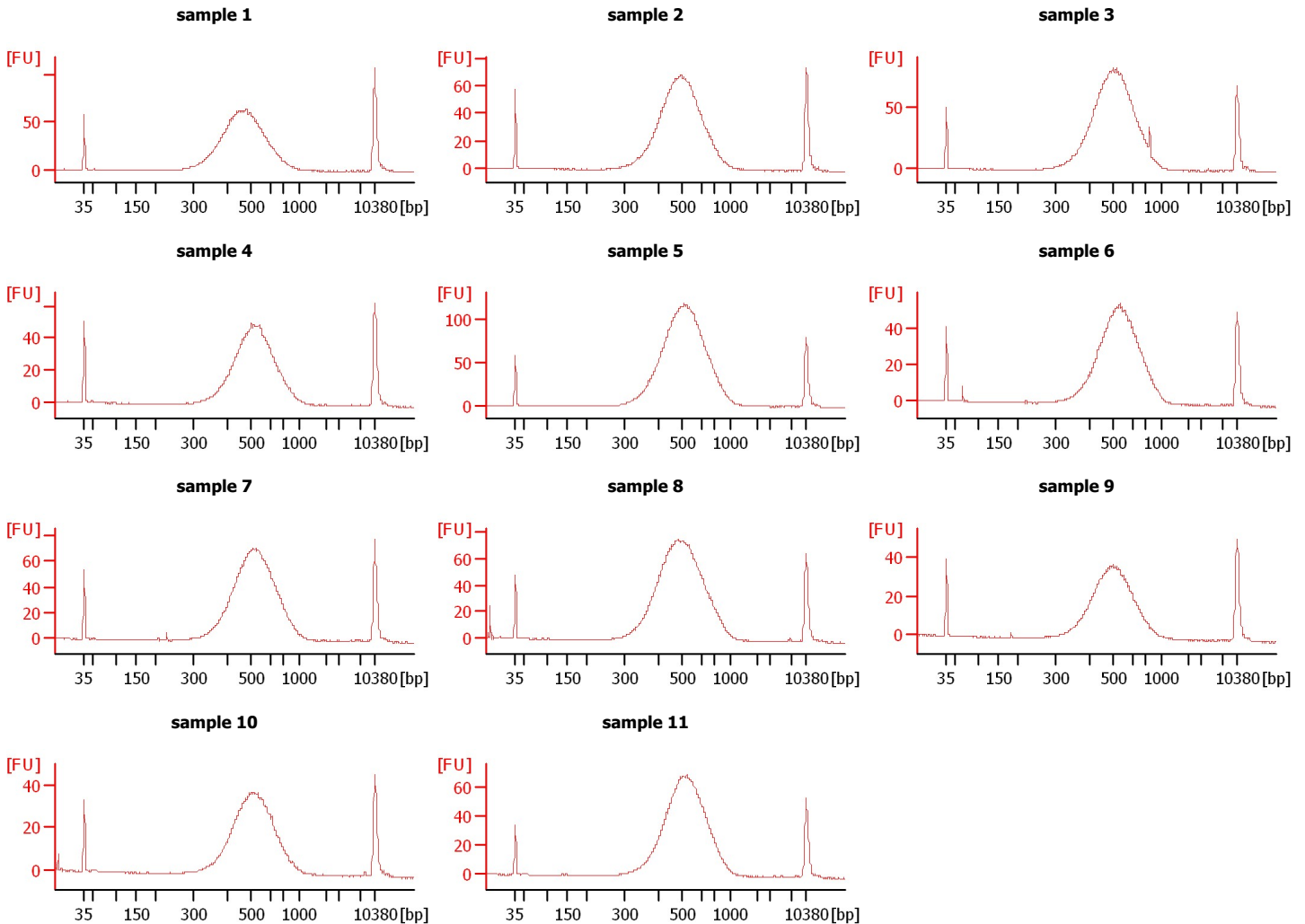
Instrument Name: DE13701086 Firmware: C.01.069
Serial#: DE13701086 Type: G2938B

Assay Information:

Assay Origin Path: C:\Program Files\Agilent\2100 bioanalyzer\2100 expert\assays\dsDNA\High Sensitivity DNA.xsy
Assay Class: High Sensitivity DNA Assay
Version: 1.03
Assay Comments: Copyright © 2003-2010 Agilent Technologies

Chip Information:

Chip Lot #:
Reagent Kit Lot #:
Chip Comments:



Assay Class: High Sensitivity DNA Assay
Data Path: C:\...ents and Settings\Bioanalyzer\2015-05-20\2015-05-20_004.xad

Created: 5/20/2015 1:13:40 PM
Modified: 5/20/2015 1:55:02 PM

Electrophoresis File Run Summary (Chip Summary)

Sample Name	Sample Comment	Rest. Digest	Status	Observation	Result Label	Result Color
sample 1		<input type="checkbox"/>	✓			
sample 2		<input type="checkbox"/>	✓			
sample 3		<input type="checkbox"/>	✓			
sample 4		<input type="checkbox"/>	✓			
sample 5		<input type="checkbox"/>	✓			
sample 6		<input type="checkbox"/>	✓			
sample 7		<input type="checkbox"/>	✓			
sample 8		<input type="checkbox"/>	✓			
sample 9		<input type="checkbox"/>	✓			
sample 10		<input type="checkbox"/>	✓			
sample 11		<input type="checkbox"/>	✓			
Ladder		<input type="checkbox"/>	✓			

Chip Lot #

Reagent Kit Lot #

Chip Comments :

Assay Class: High Sensitivity DNA Assay
Data Path: C:\...ents and Settings\Bioanalyzer\2015-05-20\2015-05-20_004.xad

Created: 5/20/2015 1:13:40 PM
Modified: 5/20/2015 1:55:02 PM

Electrophoresis Assay Details

General Analysis Settings

Number of Available Sample and Ladder Wells (Max.) : 12
Minimum Visible Range [s] : 32
Maximum Visible Range [s] : 138
Start Analysis Time Range [s] : 33
End Analysis Time Range [s] : 137.5
Ladder Concentration [pg/μl] : 1950
Uses Standard Area for Ladder Fragments
Lower Marker Concentration [pg/μl] : 125
Upper Marker Concentration [pg/μl] : 75
Used Upper Marker for Quantitation
Standard Curve Fit is Point to Point
Show Data Aligned to Lower and Upper Marker

Integrator Settings

Integration Start Time [s] : 33.05
Integration End Time [s] : 137
Slope Threshold : 0.8
Height Threshold [FU] : 5
Area Threshold : 0.1
Width Threshold [s] : 0.6
Baseline Plateau [s] : 0.5

Filter Settings

Filter Width [s] : 0.5
Polynomial Order : 4

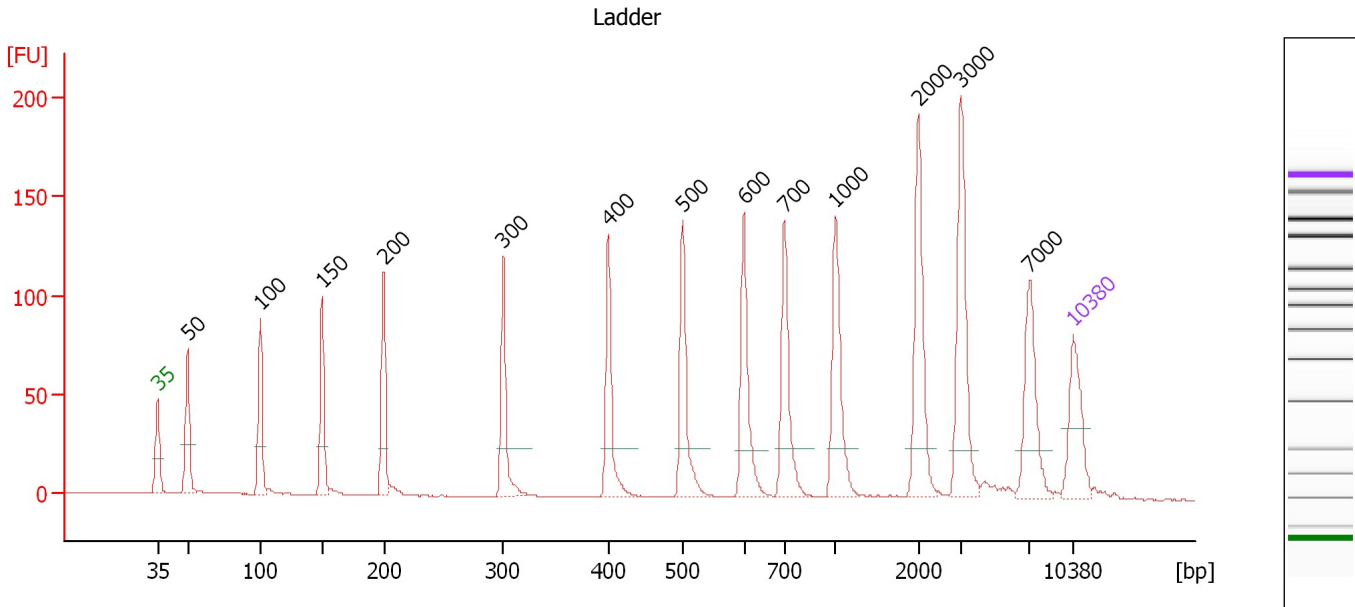
Ladder

Ladder Peak	Size	Area
1	35	160
2	50	210
3	100	208
4	150	221
5	200	242
6	300	270
7	400	305
8	500	306
9	600	336
10	700	321
11	1000	366
12	2000	413
13	3000	411
14	7000	400
15	10380	214

Assay Class: High Sensitivity DNA Assay
 Data Path: C:\...ents and Settings\Bioanalyzer\2015-05-20\2015-05-20_004.xad

Created: 5/20/2015 1:13:40 PM
 Modified: 5/20/2015 1:55:02 PM

Electropherogram Summary



Overall Results for Ladder

Noise: 0.2

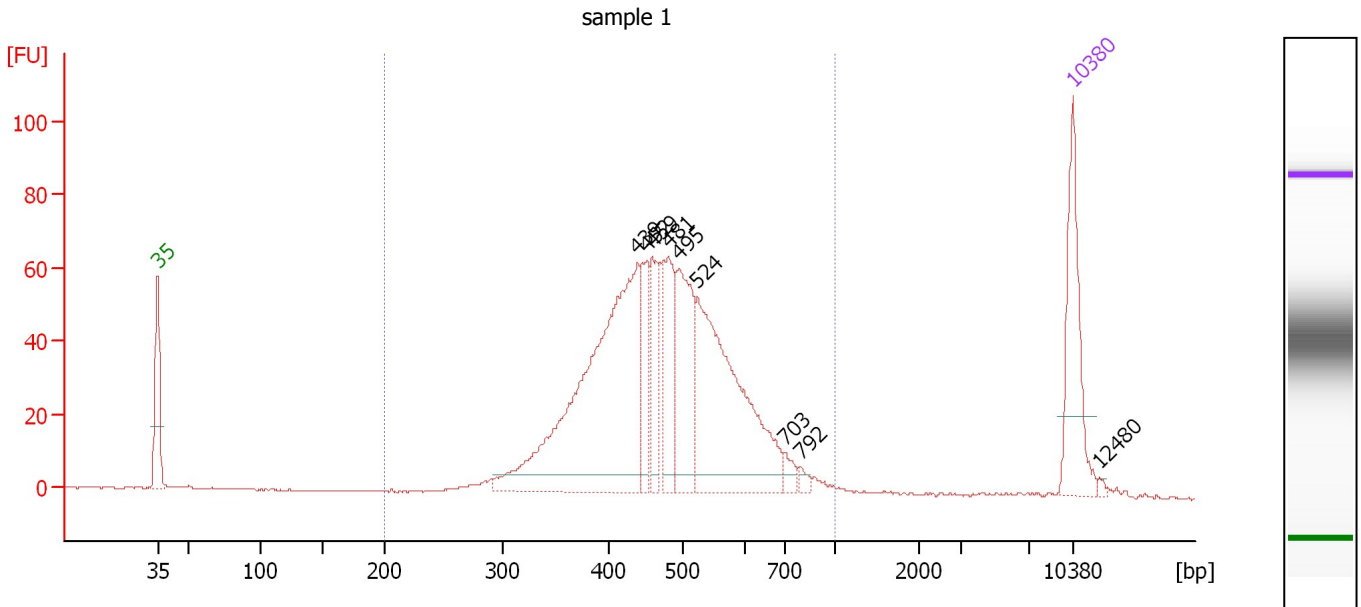
Peak table for Ladder

Peak	Size [bp]	Conc. [pg/μl]	Molarity [pmol/l]	Observations	Aligned Migration Time [s]
1	35	125.00	5,411.3	Lower Marker	43.00
2	50	150.00	4,545.5	Ladder Peak	45.29
3	100	150.00	2,272.7	Ladder Peak	50.86
4	150	150.00	1,515.2	Ladder Peak	55.58
5	200	150.00	1,136.4	Ladder Peak	60.30
6	300	150.00	757.6	Ladder Peak	69.42
7	400	150.00	568.2	Ladder Peak	77.46
8	500	150.00	454.5	Ladder Peak	83.17
9	600	150.00	378.8	Ladder Peak	87.84
10	700	150.00	324.7	Ladder Peak	90.93
11	1,000	150.00	227.3	Ladder Peak	94.86
12	2,000	150.00	113.6	Ladder Peak	101.17
13	3,000	150.00	75.8	Ladder Peak	104.44
14	7,000	150.00	32.5	Ladder Peak	109.68
15	10,380	75.00	10.9	Upper Marker	113.00

Assay Class: High Sensitivity DNA Assay
 Data Path: C:\...ents and Settings\Bioanalyzer\2015-05-20\2015-05-20_004.xad

Created: 5/20/2015 1:13:40 PM
 Modified: 5/20/2015 1:55:02 PM

Electropherogram Summary Continued ...



Overall Results for sample 1 : sample 1

Number of peaks found: 9 Corr. Area 1: 1,036.5
 Noise: 0.2

Peak table for sample 1 : sample 1

Peak	Size [bp]	Conc. [pg/μl]	Molarity [pmol/l]	Observations	Aligned Migration Time [s]
1	35	125.00	5,411.3	Lower Marker	43.00
2	439	404.20	1,393.7		79.71
3	452	50.80	170.4		80.41
4	459	62.44	206.0		80.84
5	481	72.68	229.2		82.06
6	495	111.81	342.0		82.90
7	524	256.16	740.2		84.31
8	703	10.67	23.0		90.96
9	792	6.38	12.2		92.14
10	10,380	75.00	10.9	Upper Marker	113.00
11	12,480	0.00	0.0		115.06

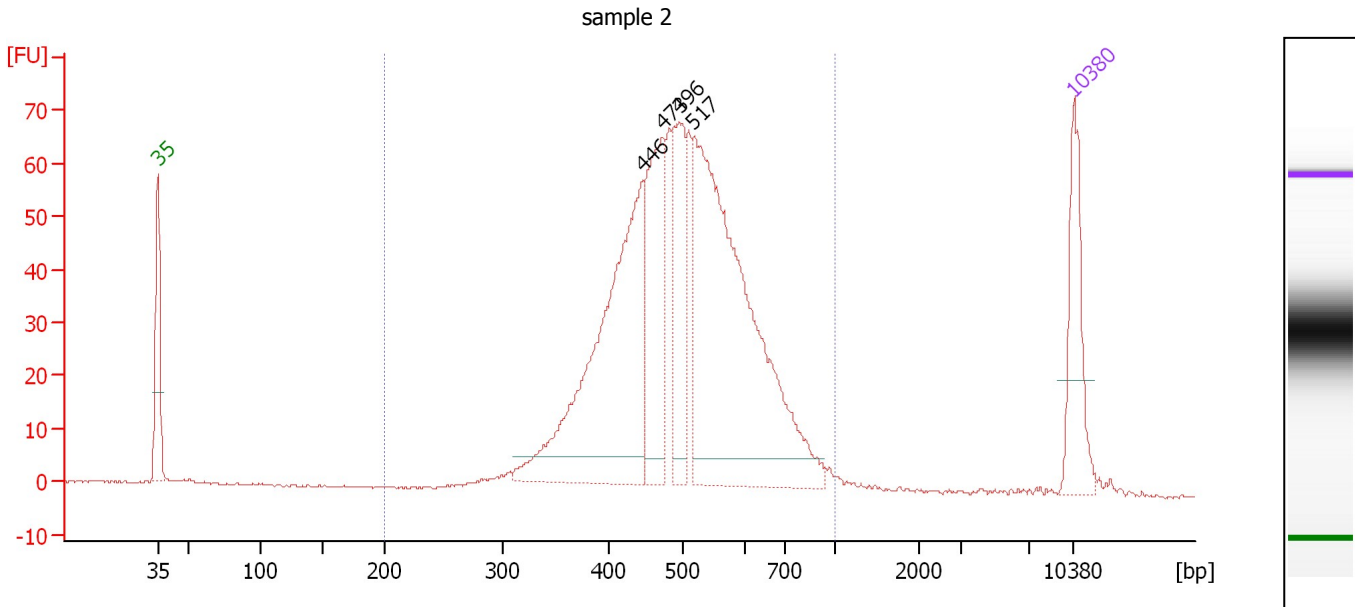
Region table for sample 1 : sample 1

From [bp]	Average Size [bp]	To [bp]	Corr. Area	Molarity [pmol/l]	% of Total	Size distribution in CV [%]	Conc. [pg/μl]	Color
200	480	1,000	1,036.5	3,511.7	97	21.2	1,051.83	Blue

Assay Class: High Sensitivity DNA Assay
 Data Path: C:\...ents and Settings\Bioanalyzer\2015-05-20\2015-05-20_004.xad

Created: 5/20/2015 1:13:40 PM
 Modified: 5/20/2015 1:55:02 PM

Electropherogram Summary Continued ...



Overall Results for sample 2 : sample 2

Number of peaks found: 4 Corr. Area 1: 1,036.6
 Noise: 0.2

Peak table for sample 2 : sample 2

Peak	Size [bp]	Conc. [pg/μl]	Molarity [pmol/l]	Observations	Aligned Migration Time [s]
1	35	125.00	5,411.3	Lower Marker	43.00
2	446	407.48	1,383.5		80.10
3	473	180.25	577.3		81.63
4	496	119.17	364.3		82.92
5	517	550.90	1,614.1		83.97
6	10,380	75.00	10.9	Upper Marker	113.00

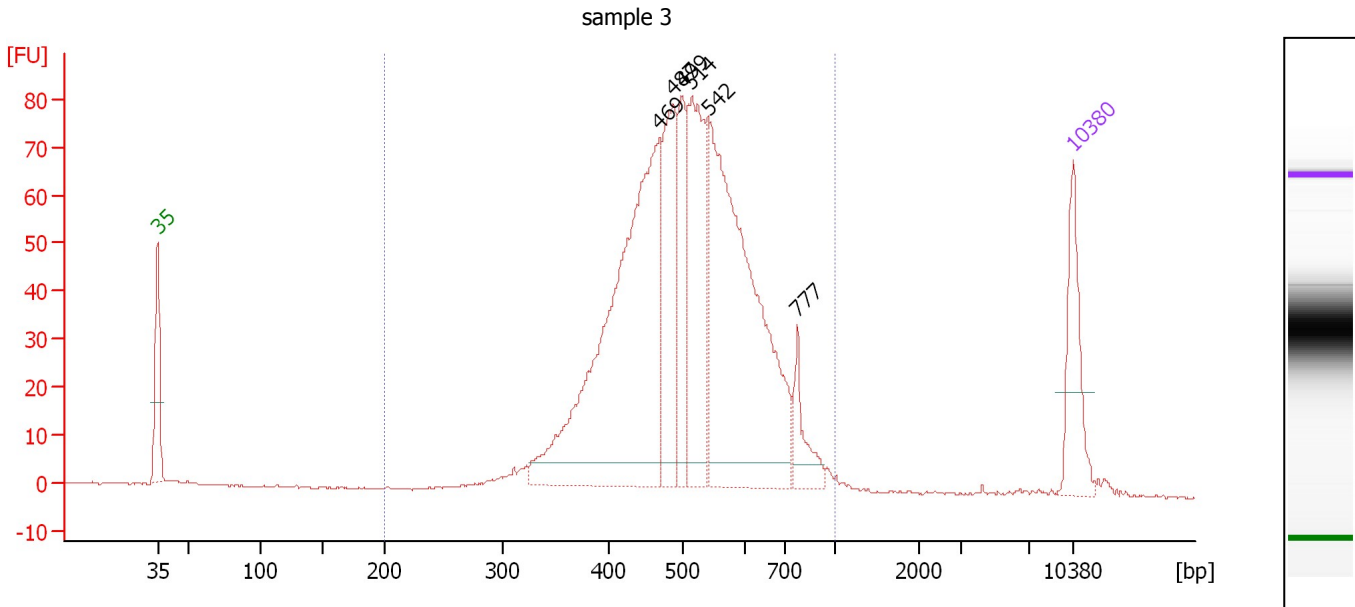
Region table for sample 2 : sample 2

From [bp]	Average Size [bp]	To [bp]	Corr. Area	Molarity [pmol/l]	% of Total	Size distribution in CV [%]	Conc. [pg/μl]	Color
200	506	1,000	1,036.6	4,538.3	97	20.8	1,435.99	Blue

Assay Class: High Sensitivity DNA Assay
 Data Path: C:\...ents and Settings\Bioanalyzer\2015-05-20\2015-05-20_004.xad

Created: 5/20/2015 1:13:40 PM
 Modified: 5/20/2015 1:55:02 PM

Electropherogram Summary Continued ...



Overall Results for sample 3 : sample 3

Number of peaks found: 6 Corr. Area 1: 1,203.2
 Noise: 0.2

Peak table for sample 3 : sample 3

Peak	Size [bp]	Conc. [pg/μl]	Molarity [pmol/l]	Observations	Aligned Migration Time [s]
1	35	125.00	5,411.3	Lower Marker	43.00
2	469	648.86	2,097.6		81.38
3	487	193.25	601.7		82.40
4	499	115.04	349.0		83.13
5	514	228.86	674.9		83.81
6	542	549.14	1,535.4		85.13
7	777	47.39	92.4		91.94
8	10,380	75.00	10.9	Upper Marker	113.00

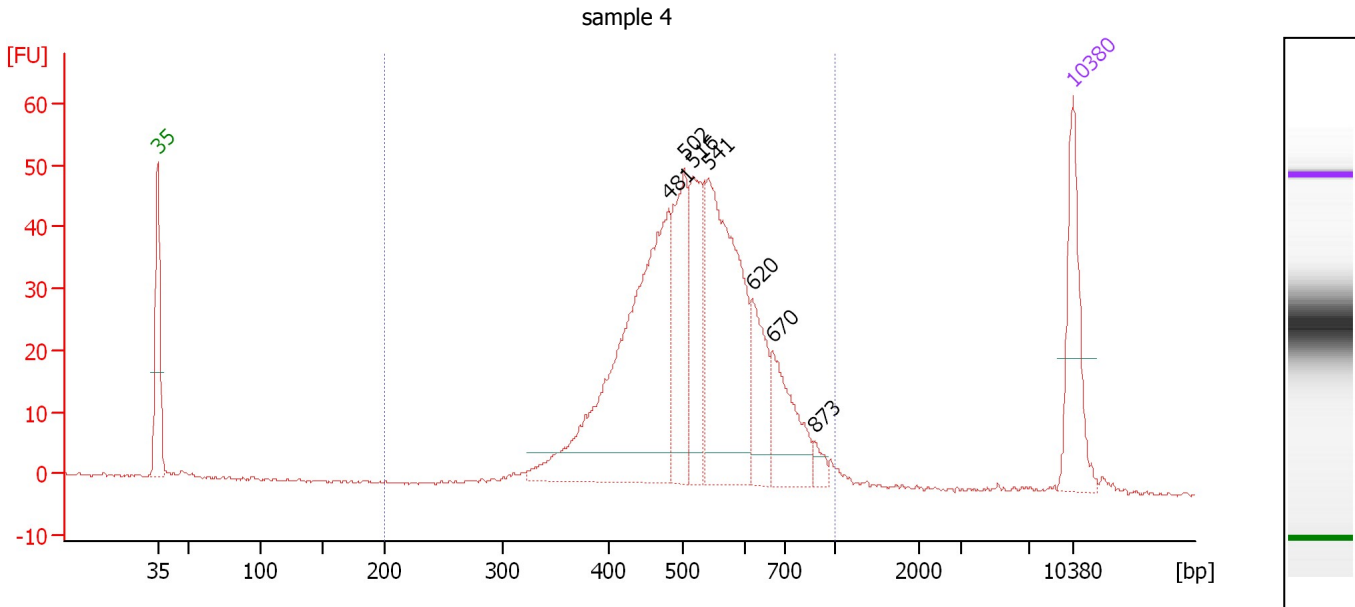
Region table for sample 3 : sample 3

From [bp]	Average Size [bp]	To [bp]	Corr. Area	Molarity [pmol/l]	% of Total	Size distribution in CV [%]	Conc. [pg/μl]	Color
200	516	1,000	1,203.2	5,816.0	98	20.6	1,876.13	Blue

Assay Class: High Sensitivity DNA Assay
 Data Path: C:\...ents and Settings\Bioanalyzer\2015-05-20\2015-05-20_004.xad

Created: 5/20/2015 1:13:40 PM
 Modified: 5/20/2015 1:55:02 PM

Electropherogram Summary Continued ...



Overall Results for sample 4 : sample 4

Number of peaks found: 7 Corr. Area 1: 668.8
 Noise: 0.2

Peak table for sample 4 : sample 4

Peak	Size [bp]	Conc. [pg/μl]	Molarity [pmol/l]	Observations	Aligned Migration Time [s]
1	35	125.00	5,411.3	Lower Marker	43.00
2	481	418.77	1,319.7		82.07
3	502	132.66	400.4		83.26
4	516	115.37	338.9		83.91
5	541	288.40	807.2		85.10
6	620	70.21	171.4		88.48
7	670	82.31	186.1		90.01
8	873	10.93	19.0		93.19
9	10,380	75.00	10.9	Upper Marker	113.00

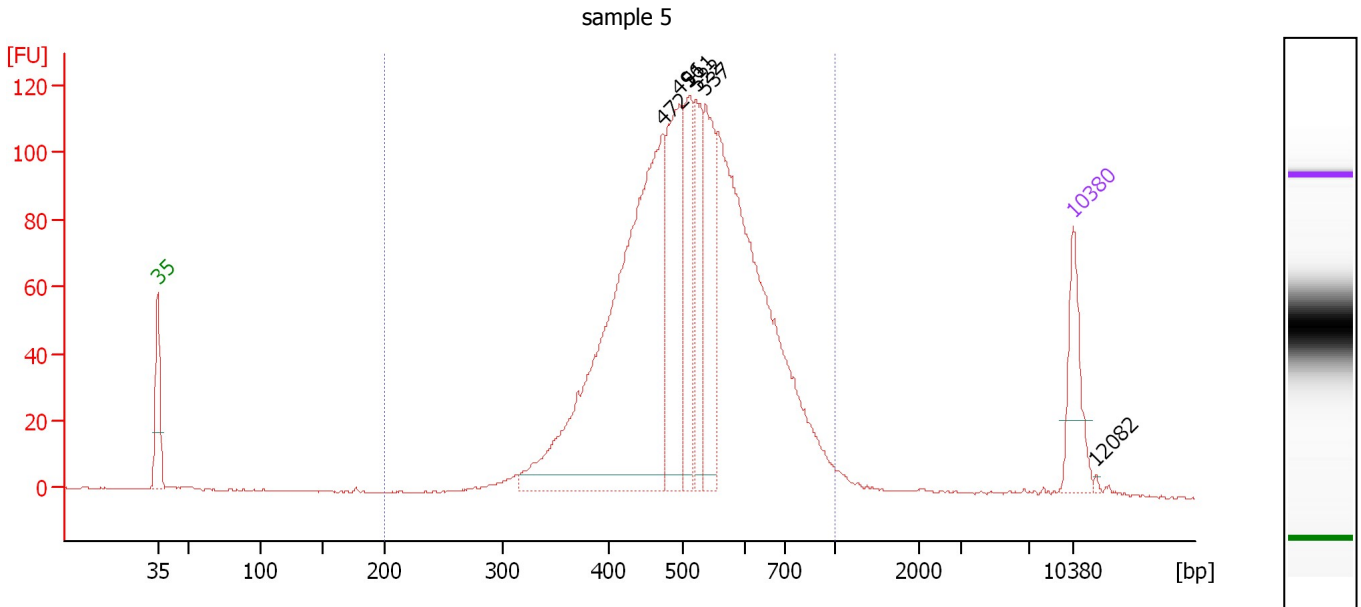
Region table for sample 4 : sample 4

From [bp]	Average Size [bp]	To [bp]	Corr. Area	Molarity [pmol/l]	% of Total	Size distribution in CV [%]	Conc. [pg/μl]	Color
200	530	1,000	668.8	3,331.1	99	19.8	1,111.42	Blue

Assay Class: High Sensitivity DNA Assay
 Data Path: C:\...ents and Settings\Bioanalyzer\2015-05-20\2015-05-20_004.xad

Created: 5/20/2015 1:13:40 PM
 Modified: 5/20/2015 1:55:02 PM

Electropherogram Summary Continued ...



Overall Results for sample 5 : sample 5

Number of peaks found: 6 Corr. Area 1: 1,771.4
 Noise: 0.2

Peak table for sample 5 : sample 5

Peak	Size [bp]	Conc. [pg/μl]	Molarity [pmol/l]	Observations	Aligned Migration Time [s]
1	35	125.00	5,411.3	Lower Marker	43.00
2	472	897.49	2,878.2		81.60
3	496	257.51	787.3		82.91
4	511	141.76	420.5		83.67
5	522	128.17	372.3		84.18
6	537	176.40	497.9		84.89
7	10,380	75.00	10.9	Upper Marker	113.00
8	12,082	0.00	0.0		114.67

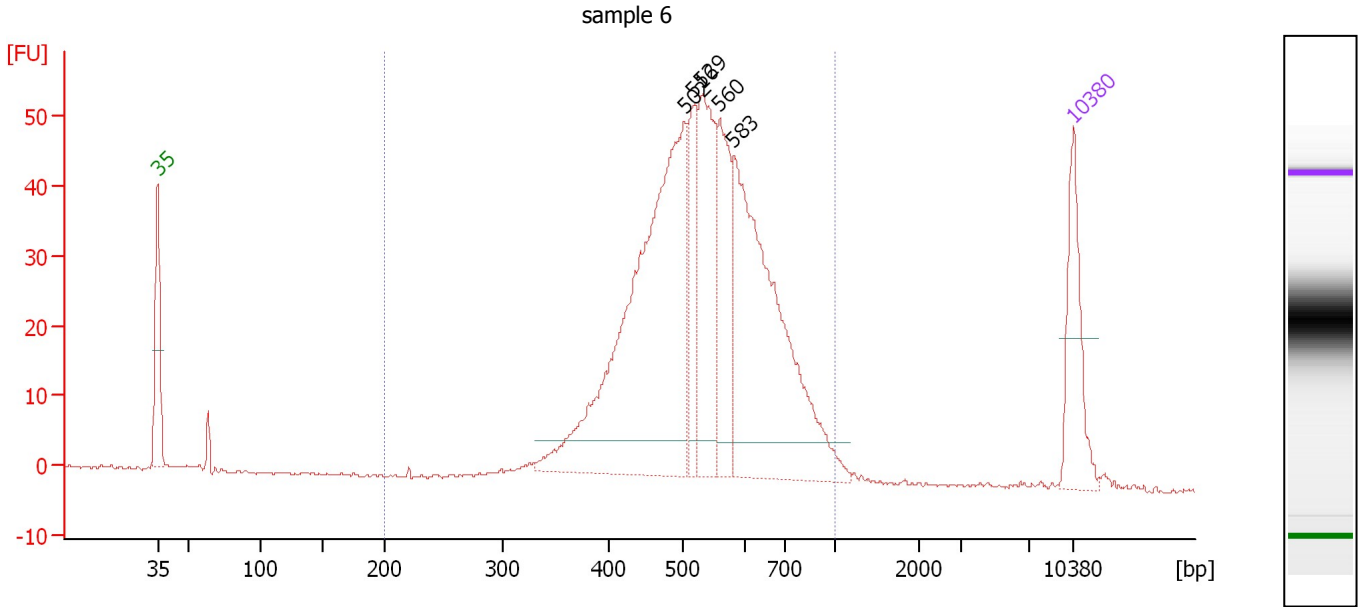
Region table for sample 5 : sample 5

From [bp]	Average Size [bp]	To [bp]	Corr. Area	Molarity [pmol/l]	% of Total	Size distribution in CV [%]	Conc. [pg/μl]	Color
200	523	1,000	1,771.4	7,541.6	98	21.4	2,458.90	Blue

Assay Class: High Sensitivity DNA Assay
 Data Path: C:\...ents and Settings\Bioanalyzer\2015-05-20\2015-05-20_004.xad

Created: 5/20/2015 1:13:40 PM
 Modified: 5/20/2015 1:55:02 PM

Electropherogram Summary Continued ...



Overall Results for sample 6 : sample 6

Number of peaks found: 5 Corr. Area 1: 743.4
 Noise: 0.3

Peak table for sample 6 : sample 6

Peak	Size [bp]	Conc. [pg/μl]	Molarity [pmol/l]	Observations	Aligned Migration Time [s]
1	35	125.00	5,411.3	Lower Marker	43.00
2	502	580.65	1,752.8		83.26
3	516	82.35	241.7		83.92
4	529	181.30	518.9		84.54
5	560	131.87	356.8		85.97
6	583	390.23	1,014.1		87.05
7	10,380	75.00	10.9	Upper Marker	113.00

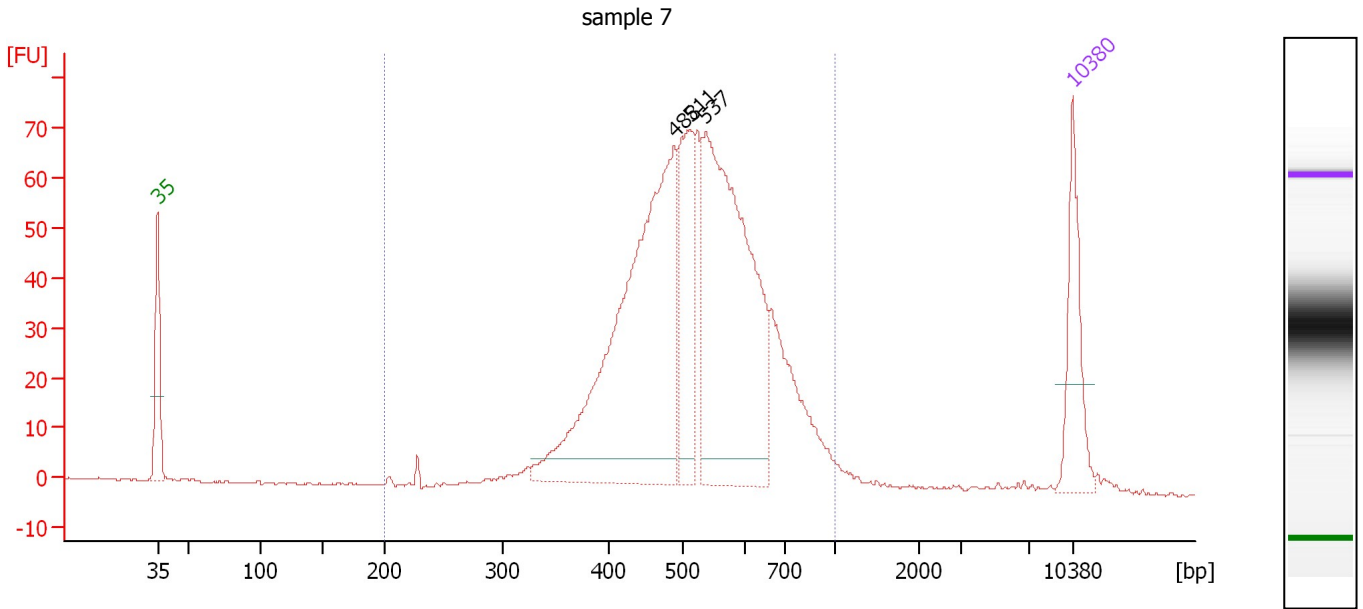
Region table for sample 6 : sample 6

From [bp]	Average Size [bp]	To [bp]	Corr. Area	Molarity [pmol/l]	% of Total	Size distribution in CV [%]	Conc. [pg/μl]	Color
200	544	1,000	743.4	4,202.8	97	20.8	1,429.36	Blue

Assay Class: High Sensitivity DNA Assay
 Data Path: C:\...ents and Settings\Bioanalyzer\2015-05-20\2015-05-20_004.xad

Created: 5/20/2015 1:13:40 PM
 Modified: 5/20/2015 1:55:02 PM

Electropherogram Summary Continued ...



Overall Results for sample 7 : sample 7

Number of peaks found: 3 Corr. Area 1: 1,041.1
 Noise: 0.2

Peak table for sample 7 : sample 7

Peak	Size [bp]	Conc. [pg/μl]	Molarity [pmol/l]	Observations	Aligned Migration Time [s]
1	35	125.00	5,411.3	Lower Marker	43.00
2	488	585.78	1,817.6		82.50
3	511	145.66	431.5		83.70
4	537	473.67	1,336.0		84.91
5	10,380	75.00	10.9	Upper Marker	113.00

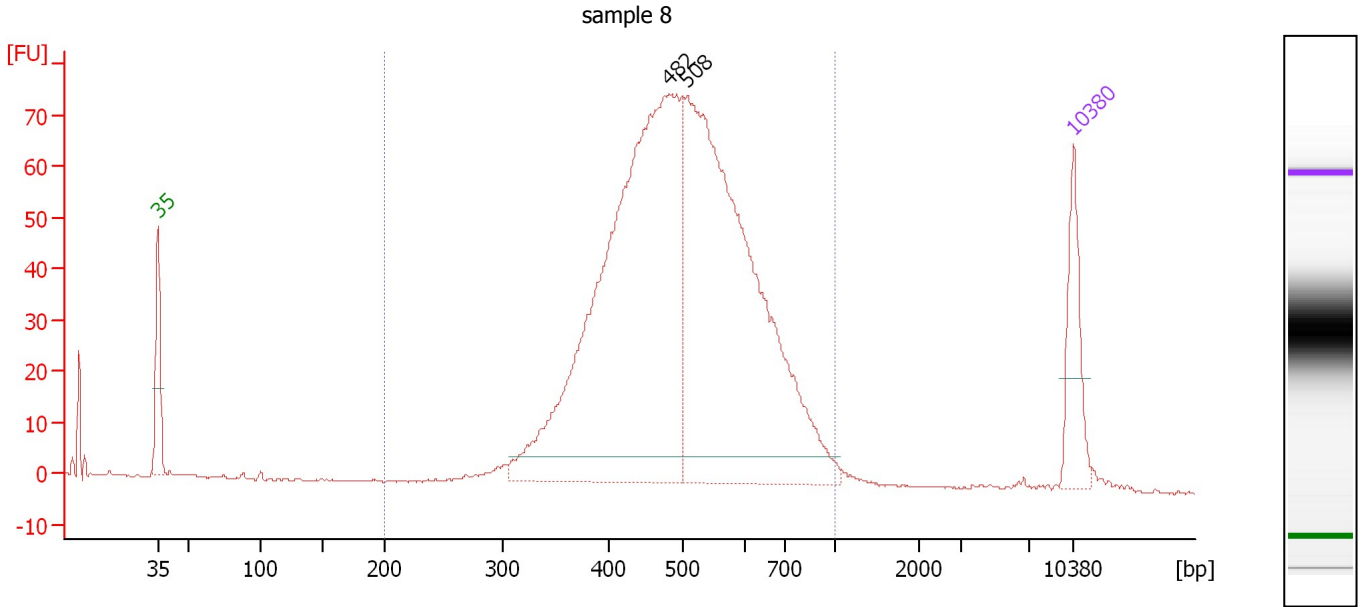
Region table for sample 7 : sample 7

From [bp]	Average Size [bp]	To [bp]	Corr. Area	Molarity [pmol/l]	% of Total	Size distribution in CV [%]	Conc. [pg/μl]	Color
200	531	1,000	1,041.1	4,489.8	97	21.5	1,482.06	Blue

Assay Class: High Sensitivity DNA Assay
 Data Path: C:\...ents and Settings\Bioanalyzer\2015-05-20\2015-05-20_004.xad

Created: 5/20/2015 1:13:40 PM
 Modified: 5/20/2015 1:55:02 PM

Electropherogram Summary Continued ...



Overall Results for sample 8 : sample 8

Number of peaks found: 2 Corr. Area 1: 1,222.3
 Noise: 0.2

Peak table for sample 8 : sample 8

Peak	Size [bp]	Conc. [pg/μl]	Molarity [pmol/l]	Observations	Aligned Migration Time [s]
1	35	125.00	5,411.3	Lower Marker	43.00
2	482	1,067.65	3,355.3		82.15
3	508	922.51	2,753.8		83.52
4	10,380	75.00	10.9	Upper Marker	113.00

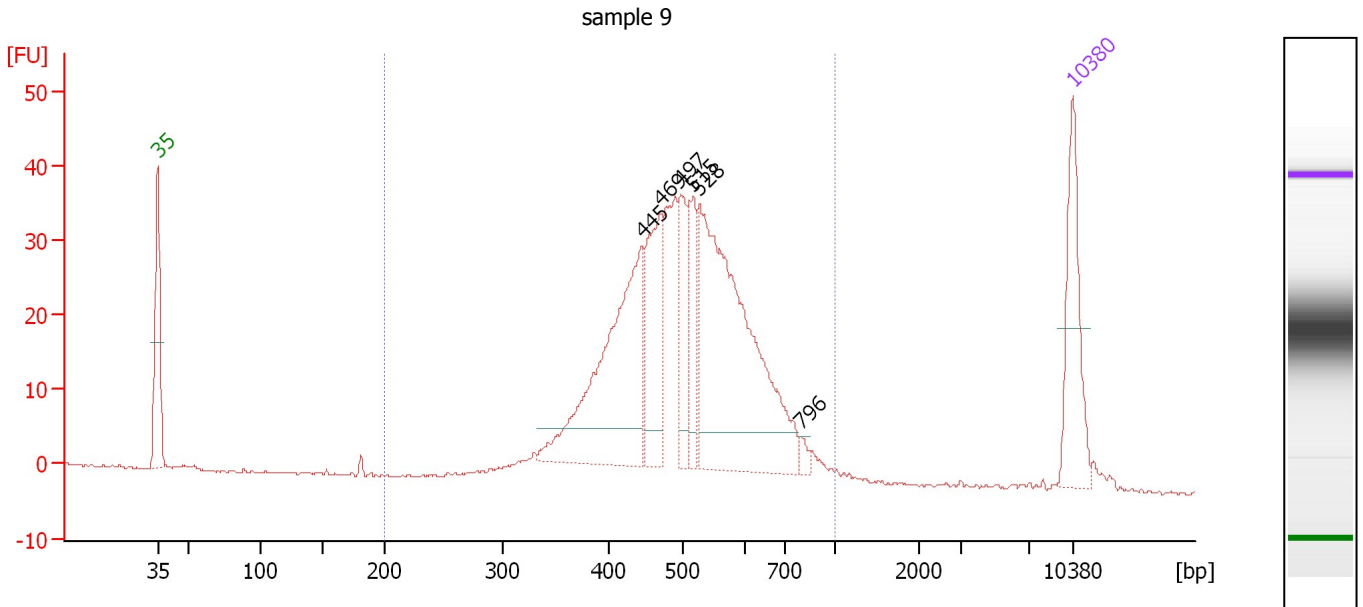
Region table for sample 8 : sample 8

From [bp]	Average Size [bp]	To [bp]	Corr. Area	Molarity [pmol/l]	% of Total	Size distribution in CV [%]	Conc. [pg/μl]	Color
200	509	1,000	1,222.3	6,345.0	96	22.2	2,007.29	Blue

Assay Class: High Sensitivity DNA Assay
 Data Path: C:\...ents and Settings\Bioanalyzer\2015-05-20\2015-05-20_004.xad

Created: 5/20/2015 1:13:40 PM
 Modified: 5/20/2015 1:55:02 PM

Electropherogram Summary Continued ...



Overall Results for sample 9 : sample 9

Number of peaks found: 6 Corr. Area 1: 537.4
 Noise: 0.2

Peak table for sample 9 : sample 9

Peak	Size [bp]	Conc. [pg/μl]	Molarity [pmol/l]	Observations	Aligned Migration Time [s]
1	35	125.00	5,411.3	Lower Marker	43.00
2	445	261.00	888.7		80.03
3	469	107.47	347.0		81.41
4	497	66.78	203.4		83.02
5	515	64.47	189.7		83.87
6	528	365.07	1,048.5		84.46
7	796	7.05	13.4		92.19
8	10,380	75.00	10.9	Upper Marker	113.00

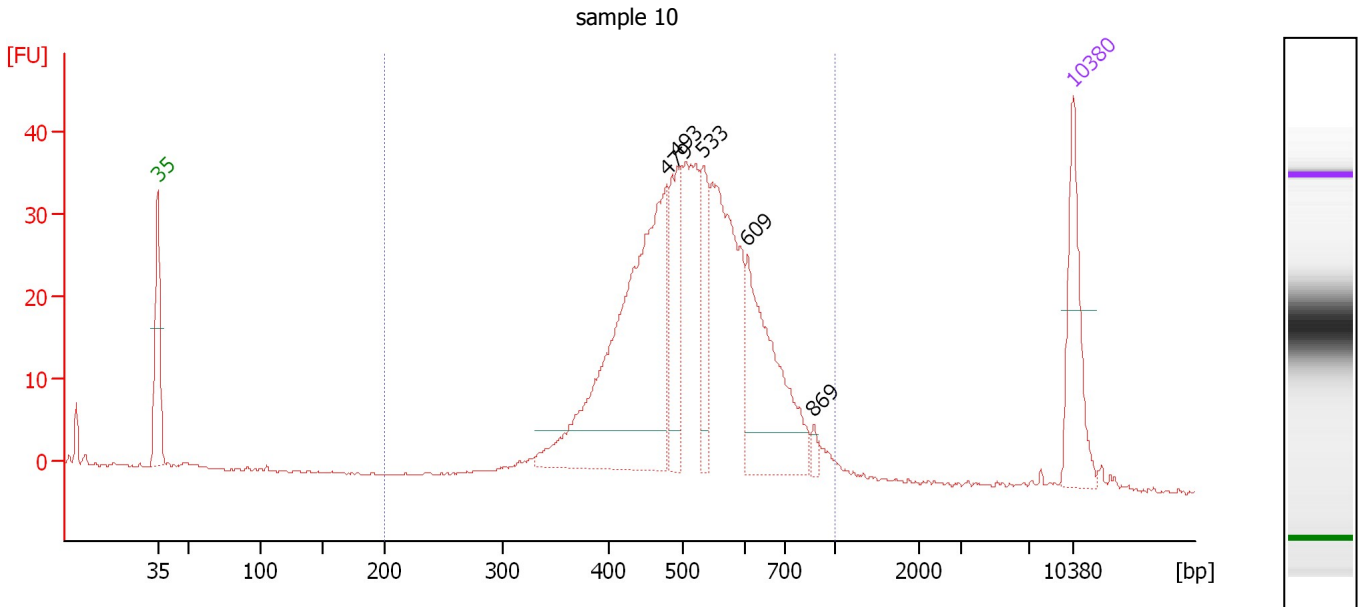
Region table for sample 9 : sample 9

From [bp]	Average Size [bp]	To [bp]	Corr. Area	Molarity [pmol/l]	% of Total	Size distribution in CV [%]	Conc. [pg/μl]	Color
200	510	1,000	537.4	3,396.4	98	20.3	1,087.45	Blue

Assay Class: High Sensitivity DNA Assay
 Data Path: C:\...ents and Settings\Bioanalyzer\2015-05-20\2015-05-20_004.xad

Created: 5/20/2015 1:13:40 PM
 Modified: 5/20/2015 1:55:02 PM

Electropherogram Summary Continued ...



Overall Results for sample 10 : sample 10

Number of peaks found: 5 Corr. Area 1: 528.7
 Noise: 0.1

Peak table for sample 10 : sample 10

Peak	Size [bp]	Conc. [pg/μl]	Molarity [pmol/l]	Observations	Aligned Migration Time [s]
1	35	125.00	5,411.3	Lower Marker	43.00
2	479	430.03	1,361.3		81.95
3	493	100.07	307.6		82.76
4	533	68.85	195.7		84.71
5	609	173.04	430.6		88.12
6	869	8.05	14.0		93.15
7	10,380	75.00	10.9	Upper Marker	113.00

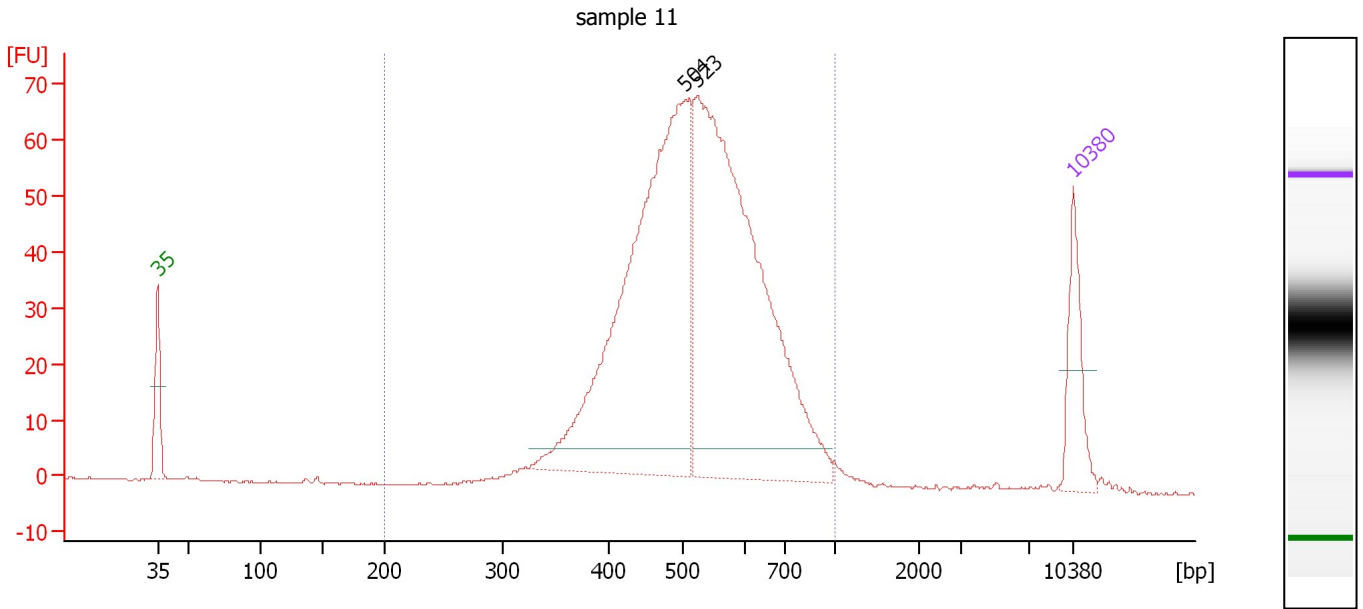
Region table for sample 10 : sample 10

From [bp]	Average Size [bp]	To [bp]	Corr. Area	Molarity [pmol/l]	% of Total	Size distribution in CV [%]	Conc. [pg/μl]	Color
200	526	1,000	528.7	3,731.4	97	20.6	1,231.63	Blue

Assay Class: High Sensitivity DNA Assay
 Data Path: C:\...ents and Settings\Bioanalyzer\2015-05-20\2015-05-20_004.xad

Created: 5/20/2015 1:13:40 PM
 Modified: 5/20/2015 1:55:02 PM

Electropherogram Summary Continued ...



Overall Results for sample 11 : sample 11

Number of peaks found: 2 Corr. Area 1: 965.8
 Noise: 0.2

Peak table for sample 11 : sample 11

Peak	Size [bp]	Conc. [pg/μl]	Molarity [pmol/l]	Observations	Aligned Migration Time [s]
1	35	125.00	5,411.3	Lower Marker	43.00
2	504	874.85	2,629.2		83.36
3	523	909.62	2,635.3		84.24
4	10,380	75.00	10.9	Upper Marker	113.00

Region table for sample 11 : sample 11

From [bp]	Average Size [bp]	To [bp]	Corr. Area	Molarity [pmol/l]	% of Total	Size distribution in CV [%]	Conc. [pg/μl]	Color
200	529	1,000	965.8	5,811.8	97	20.9	1,922.56	Blue

Assay Class: High Sensitivity DNA Assay
Data Path: C:\...ents and Settings\Bioanalyzer\2015-05-20\2015-05-20_004.xad

Created: 5/20/2015 1:13:40 PM
Modified: 5/20/2015 1:55:02 PM

Gel Image