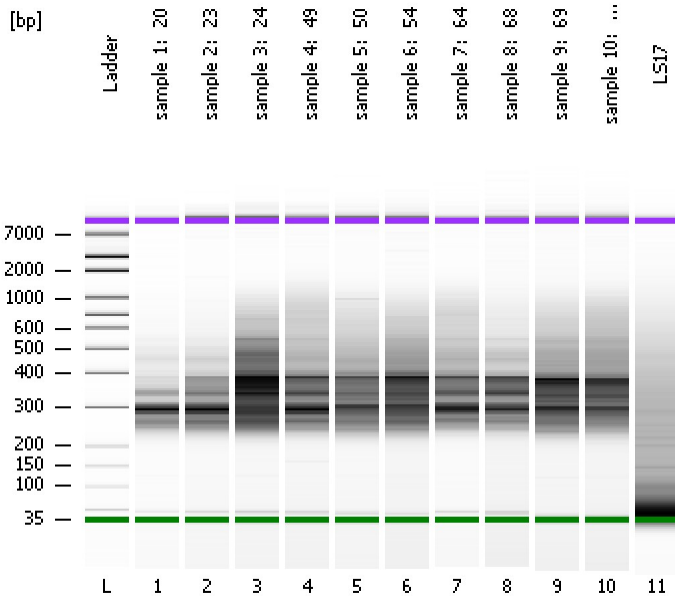


Assay Class: High Sensitivity DNA Assay
Data Path: C:\...ents and Settings\Bioanalyzer\2015-05-20\2015-05-20_005.xad

Created: 5/20/2015 2:47:09 PM
Modified: 5/20/2015 3:27:39 PM

Electrophoresis File Run Summary



Instrument Information:

Instrument Name: DE13701086 Firmware: C.01.069
Serial#: DE13701086 Type: G2938B

Assay Information:

Assay Origin Path: C:\Program Files\Agilent\2100 bioanalyzer\2100 expert\assays\dsDNA\High Sensitivity DNA.xsy
Assay Class: High Sensitivity DNA Assay
Version: 1.03
Assay Comments: Copyright © 2003-2010 Agilent Technologies

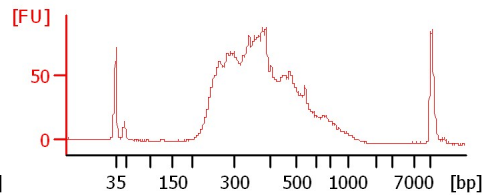
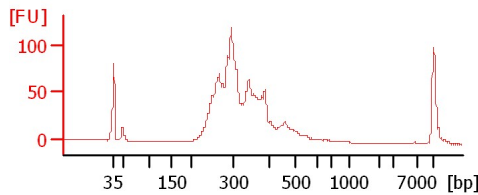
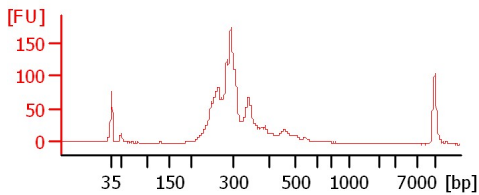
Chip Information:

Chip Lot #:
Reagent Kit Lot #:
Chip Comments:

sample 1: 20

sample 2: 23

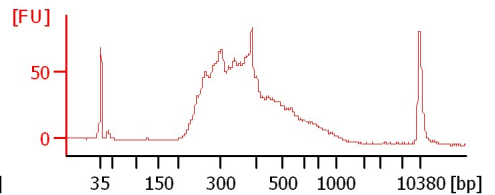
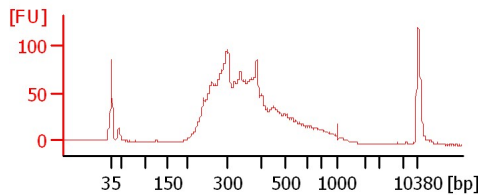
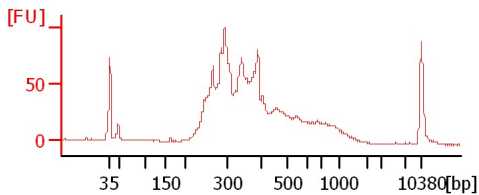
sample 3: 24



sample 4: 49

sample 5: 50

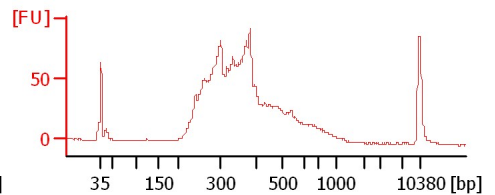
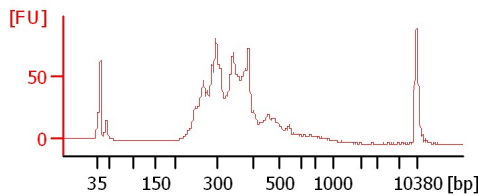
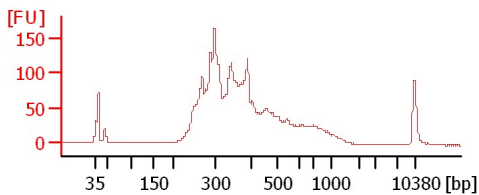
sample 6: 54



sample 7: 64

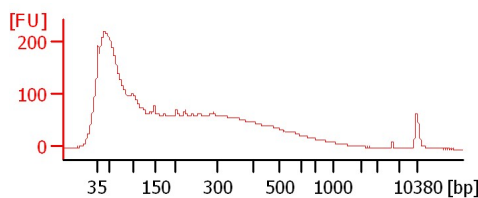
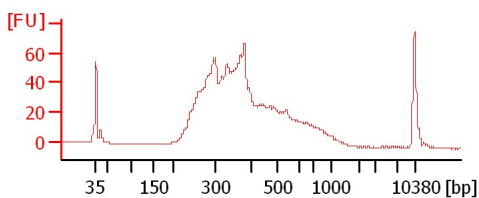
sample 8: 68

sample 9: 69



sample 10: 73

LS17



Assay Class: High Sensitivity DNA Assay
Data Path: C:\...ents and Settings\Bioanalyzer\2015-05-20\2015-05-20_005.xad

Created: 5/20/2015 2:47:09 PM
Modified: 5/20/2015 3:27:39 PM

Electrophoresis File Run Summary (Chip Summary)

Sample Name	Sample Comment	Rest. Digest	Status	Observation	Result Label	Result Color
sample 1: 20		<input type="checkbox"/>	✓			
sample 2: 23		<input type="checkbox"/>	✓			
sample 3: 24		<input type="checkbox"/>	✓			
sample 4: 49		<input type="checkbox"/>	✓			
sample 5: 50		<input type="checkbox"/>	✓			
sample 6: 54		<input type="checkbox"/>	✓			
sample 7: 64		<input type="checkbox"/>	✓			
sample 8: 68		<input type="checkbox"/>	✓			
sample 9: 69		<input type="checkbox"/>	✓			
sample 10: 73		<input type="checkbox"/>	✓			
LS17		<input type="checkbox"/>	✓			
Ladder		<input type="checkbox"/>	✓			

Chip Lot #

Reagent Kit Lot #

Chip Comments :

Assay Class: High Sensitivity DNA Assay
Data Path: C:\...ents and Settings\Bioanalyzer\2015-05-20\2015-05-20_005.xad

Created: 5/20/2015 2:47:09 PM
Modified: 5/20/2015 3:27:39 PM

Electrophoresis Assay Details

General Analysis Settings

Number of Available Sample and Ladder Wells (Max.) : 12
Minimum Visible Range [s] : 32
Maximum Visible Range [s] : 138
Start Analysis Time Range [s] : 33
End Analysis Time Range [s] : 137.5
Ladder Concentration [pg/μl] : 1950
Uses Standard Area for Ladder Fragments
Lower Marker Concentration [pg/μl] : 125
Upper Marker Concentration [pg/μl] : 75
Used Upper Marker for Quantitation
Standard Curve Fit is Point to Point
Show Data Aligned to Lower and Upper Marker

Integrator Settings

Integration Start Time [s] : 33.05
Integration End Time [s] : 137
Slope Threshold : 0.8
Height Threshold [FU] : 5
Area Threshold : 0.1
Width Threshold [s] : 0.6
Baseline Plateau [s] : 0.5

Filter Settings

Filter Width [s] : 0.5
Polynomial Order : 4

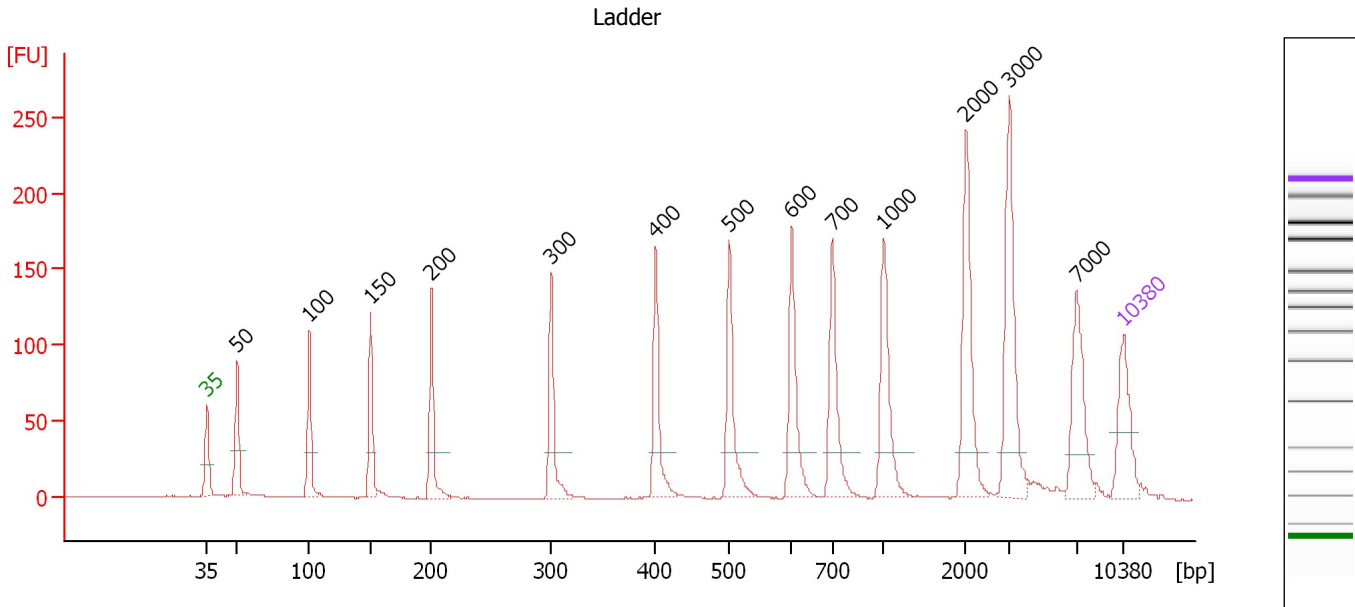
Ladder

Ladder Peak	Size	Area
1	35	160
2	50	210
3	100	208
4	150	221
5	200	242
6	300	270
7	400	305
8	500	306
9	600	336
10	700	321
11	1000	366
12	2000	413
13	3000	411
14	7000	400
15	10380	214

Assay Class: High Sensitivity DNA Assay
 Data Path: C:\...ents and Settings\Bioanalyzer\2015-05-20\2015-05-20_005.xad

Created: 5/20/2015 2:47:09 PM
 Modified: 5/20/2015 3:27:39 PM

Electropherogram Summary



Overall Results for Ladder

Noise: 0.2

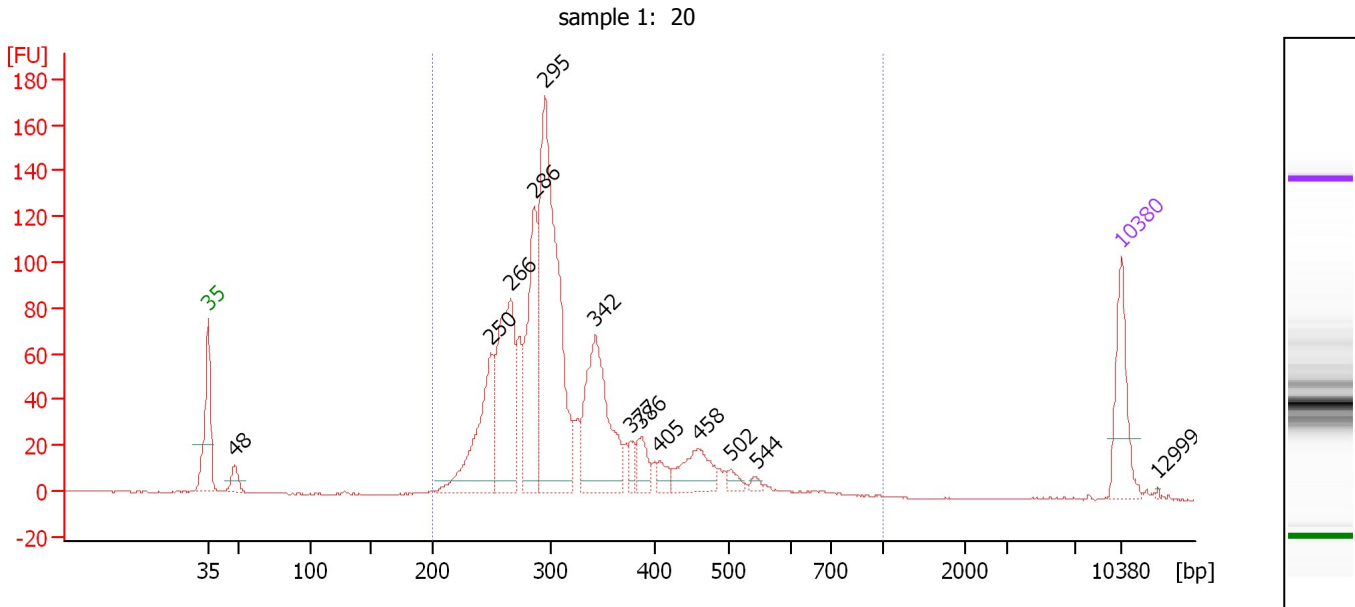
Peak table for Ladder

Peak	Size [bp]	Conc. [pg/μl]	Molarity [pmol/l]	Observations	Aligned Migration Time [s]
1	35	125.00	5,411.3	Lower Marker	43.00
2	50	150.00	4,545.5	Ladder Peak	45.28
3	100	150.00	2,272.7	Ladder Peak	50.78
4	150	150.00	1,515.2	Ladder Peak	55.51
5	200	150.00	1,136.4	Ladder Peak	60.11
6	300	150.00	757.6	Ladder Peak	69.28
7	400	150.00	568.2	Ladder Peak	77.27
8	500	150.00	454.5	Ladder Peak	82.89
9	600	150.00	378.8	Ladder Peak	87.66
10	700	150.00	324.7	Ladder Peak	90.75
11	1,000	150.00	227.3	Ladder Peak	94.66
12	2,000	150.00	113.6	Ladder Peak	100.98
13	3,000	150.00	75.8	Ladder Peak	104.28
14	7,000	150.00	32.5	Ladder Peak	109.41
15	10,380	75.00	10.9	Upper Marker	113.00

Assay Class: High Sensitivity DNA Assay
 Data Path: C:\...ents and Settings\Bioanalyzer\2015-05-20\2015-05-20_005.xad

Created: 5/20/2015 2:47:09 PM
 Modified: 5/20/2015 3:27:39 PM

Electropherogram Summary Continued ...



Overall Results for sample 1 : sample 1: 20

Number of peaks found: 13 Corr. Area 1: 1,516.3
 Noise: 0.2

Peak table for sample 1 : sample 1: 20

Peak	Size [bp]	Conc. [pg/μl]	Molarity [pmol/l]	Observations	Aligned Migration Time [s]
1	35	125.00	5,411.3	Lower Marker	43.00
2	48	30.09	946.5		45.00
3	250	208.65	1,266.7		64.66
4	266	275.81	1,570.6		66.17
5	286	226.80	1,201.0		68.01
6	295	555.23	2,855.6		68.79
7	342	247.28	1,094.2		72.67
8	377	20.46	82.3		75.41
9	386	37.31	146.3		76.18
10	405	20.26	75.7		77.57
11	458	72.52	239.7		80.55
12	502	13.43	40.5		83.01
13	544	7.39	20.6		84.97
14	10,380	75.00	10.9	Upper Marker	113.00
15	12,999	0.00	0.0		115.78

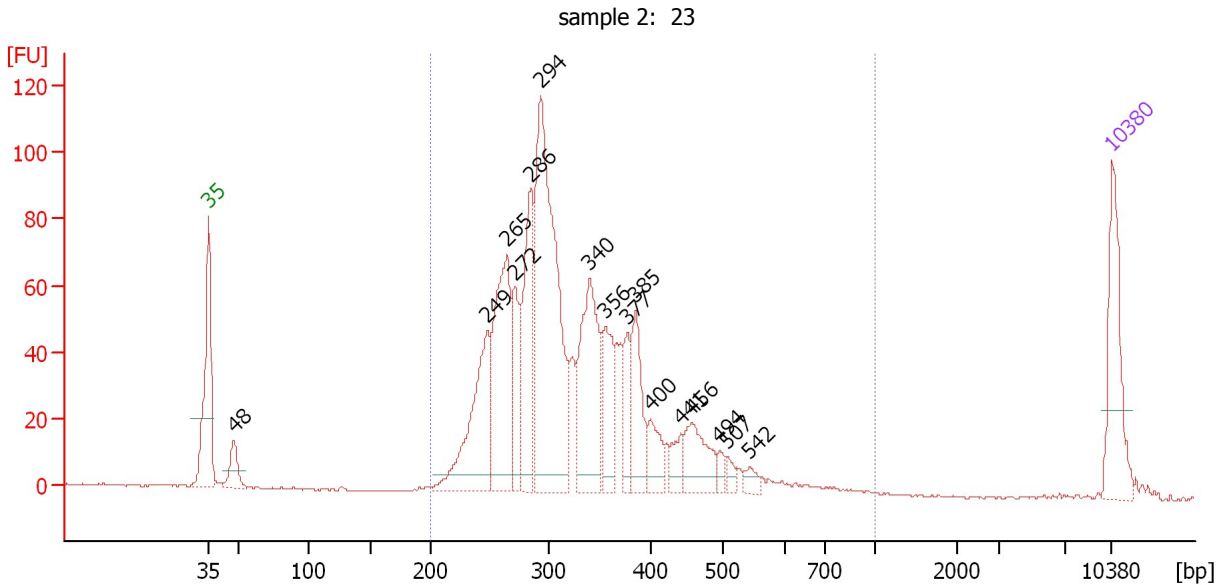
Region table for sample 1 : sample 1: 20

From [bp]	Average Size [bp]	To [bp]	Corr. Area	Molarity [pmol/l]	% of Total	Size distribution in CV [%]	Conc. [pg/μl]	Color
200	321	1,000	1,516.3	9,425.5	98	24.2	1,885.34	Blue

Assay Class: High Sensitivity DNA Assay
 Data Path: C:\...ents and Settings\Bioanalyzer\2015-05-20\2015-05-20_005.xad

Created: 5/20/2015 2:47:09 PM
 Modified: 5/20/2015 3:27:39 PM

Electropherogram Summary Continued ...



Overall Results for sample 2 : sample 2: 23

Number of peaks found: 16 Corr. Area 1: 1,429.2
 Noise: 0.3

Peak table for sample 2 : sample 2: 23

Peak	Size [bp]	Conc. [pg/μl]	Molarity [pmol/l]	Observations	Aligned Migration Time [s]
1	35	125.00	5,411.3	Lower Marker	43.00
2	48	38.05	1,206.9		44.94
3	249	173.39	1,056.7		64.57
4	265	205.90	1,175.9		66.10
5	272	78.39	436.6		66.72
6	286	147.19	780.9		67.96
7	294	406.80	2,095.5		68.74
8	340	174.62	777.3		72.50
9	356	76.74	326.7		73.74
10	377	41.64	167.3		75.44
11	385	78.18	307.8		76.06
12	400	36.32	137.6		77.26
13	441	24.11	82.9		79.57
14	456	60.48	200.8		80.44
15	494	10.80	33.1		82.55
16	507	9.98	29.8		83.21
17	542	11.14	31.1		84.90
18	10,380	75.00	10.9	Upper Marker	113.00

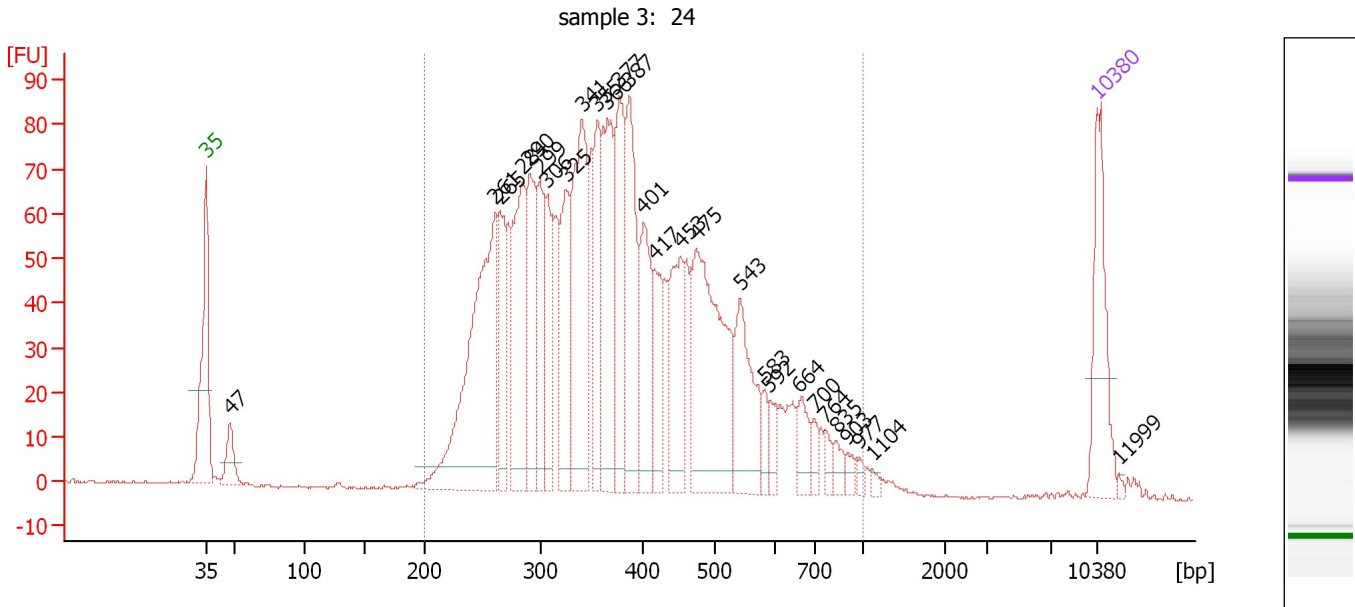
Region table for sample 2 : sample 2: 23

From [bp]	Average Size [bp]	To [bp]	Corr. Area	Molarity [pmol/l]	% of Total	Size distribution in CV [%]	Conc. [pg/μl]	Color
200	334	1,000	1,429.2	8,089.5	97	25.9	1,666.61	Blue

Assay Class: High Sensitivity DNA Assay
 Data Path: C:\...ents and Settings\Bioanalyzer\2015-05-20\2015-05-20_005.xad

Created: 5/20/2015 2:47:09 PM
 Modified: 5/20/2015 3:27:39 PM

Electropherogram Summary Continued ...



Overall Results for sample 3 : sample 3: 24

Number of peaks found: 28 Corr. Area 1: 2,131.1
 Noise: 0.2

Peak table for sample 3 : sample 3: 24

Peak	Size [bp]	Conc. [pg/μl]	Molarity [pmol/l]	Observations	Aligned Migration Time [s]
1	35	125.00	5,411.3	Lower Marker	43.00
2	47	41.82	1,336.9		44.89
3	261	349.87	2,031.1		65.70
4	265	95.14	543.7		66.08
5	284	167.22	891.2		67.84
6	290	126.11	658.3		68.39
7	299	90.71	459.1		69.22
8	306	78.68	389.4		69.77
9	325	113.77	530.4		71.28
10	341	206.90	920.0		72.53
11	355	100.31	427.6		73.71
12	366	148.40	614.5		74.54
13	377	131.97	529.7		75.47
14	387	141.62	553.9		76.26
15	401	98.18	370.5		77.35
16	417	64.31	233.6		78.23
17	453	102.23	342.0		80.24
18	475	236.26	753.2		81.50
19	543	102.73	286.7		84.93
20	583	16.57	43.1		86.86
21	592	17.31	44.3		87.28
22	664	28.25	64.5		89.62
23	700	14.42	31.2		90.76
24	764	11.40	22.6		91.59
25	835	12.36	22.4		92.52

Assay Class: High Sensitivity DNA Assay
 Data Path: C:\...ents and Settings\Bioanalyzer\2015-05-20\2015-05-20_005.xad


Created: 5/20/2015 2:47:09 PM
 Modified: 5/20/2015 3:27:39 PM

Electropherogram Summary Continued ...

... Peak table for sample 3 : sample 3: 24

Peak	Size [bp]	Conc. [pg/μl]	Molarity [pmol/l]	Observations	Aligned Migration Time [s]
26	903	8.39	14.1		93.39
27	977	5.51	8.5		94.36
28	1,104	4.44	6.1		95.32
29	10,380	75.00	10.9	Upper Marker	113.00
30	11,999	0.00	0.0		114.72

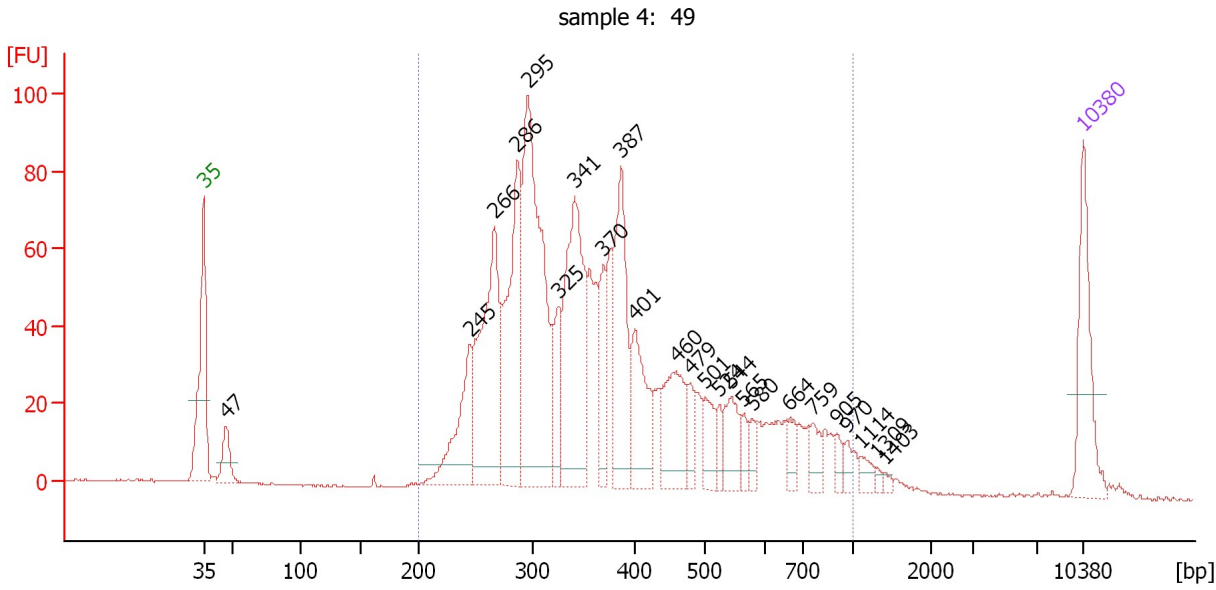
Region table for sample 3 : sample 3: 24

From [bp]	Average Size [bp]	To [bp]	Corr. Area	Molarity [pmol/l]	% of Total	Size distribution in CV [%]	Conc. [pg/μl]	Color
200	394	1,000	2,131.1	11,901.0	98	32.3	2,738.79	

Assay Class: High Sensitivity DNA Assay
 Data Path: C:\...ents and Settings\Bioanalyzer\2015-05-20\2015-05-20_005.xad

Created: 5/20/2015 2:47:09 PM
 Modified: 5/20/2015 3:27:39 PM

Electropherogram Summary Continued ...



Overall Results for sample 4 : sample 4: 49

Number of peaks found: 24 Corr. Area 1: 1,720.4
 Noise: 0.2

Peak table for sample 4 : sample 4: 49

Peak	Size [bp]	Conc. [pg/μl]	Molarity [pmol/l]	Observations	Aligned Migration Time [s]
1	35	125.00	5,411.3	Lower Marker	43.00
2	47	44.55	1,444.9		44.78
3	245	117.73	728.5		64.22
4	266	250.14	1,424.0		66.18
5	286	221.17	1,171.4		68.00
6	295	380.92	1,957.4		68.81
7	325	68.40	318.9		71.27
8	341	244.70	1,087.7		72.55
9	370	59.82	245.3		74.84
10	387	151.25	592.0		76.24
11	401	99.34	375.7		77.30
12	460	99.16	326.4		80.65
13	479	23.42	74.1		81.71
14	501	35.83	108.3		82.95
15	524	17.67	51.1		84.05
16	544	43.98	122.5		84.98
17	565	14.80	39.7		86.00
18	580	13.76	36.0		86.68
19	664	18.74	42.7		89.65
20	759	21.88	43.7		91.52
21	905	11.46	19.2		93.43
22	970	10.33	16.1		94.28
23	1,114	11.16	15.2		95.38
24	1,309	3.85	4.5		96.61
25	1,403	3.69	4.0		97.21

Assay Class: High Sensitivity DNA Assay
 Data Path: C:\...ents and Settings\Bioanalyzer\2015-05-20\2015-05-20_005.xad


Created: 5/20/2015 2:47:09 PM
 Modified: 5/20/2015 3:27:39 PM

Electropherogram Summary Continued ...

... Peak table for sample 4 : sample 4: 49

Peak	Size [bp]	Conc. [pg/ μ l]	Molarity [pmol/l]	Observations	Aligned Migration Time [s]
26	10,380	75.00	10.9	Upper Marker	113.00

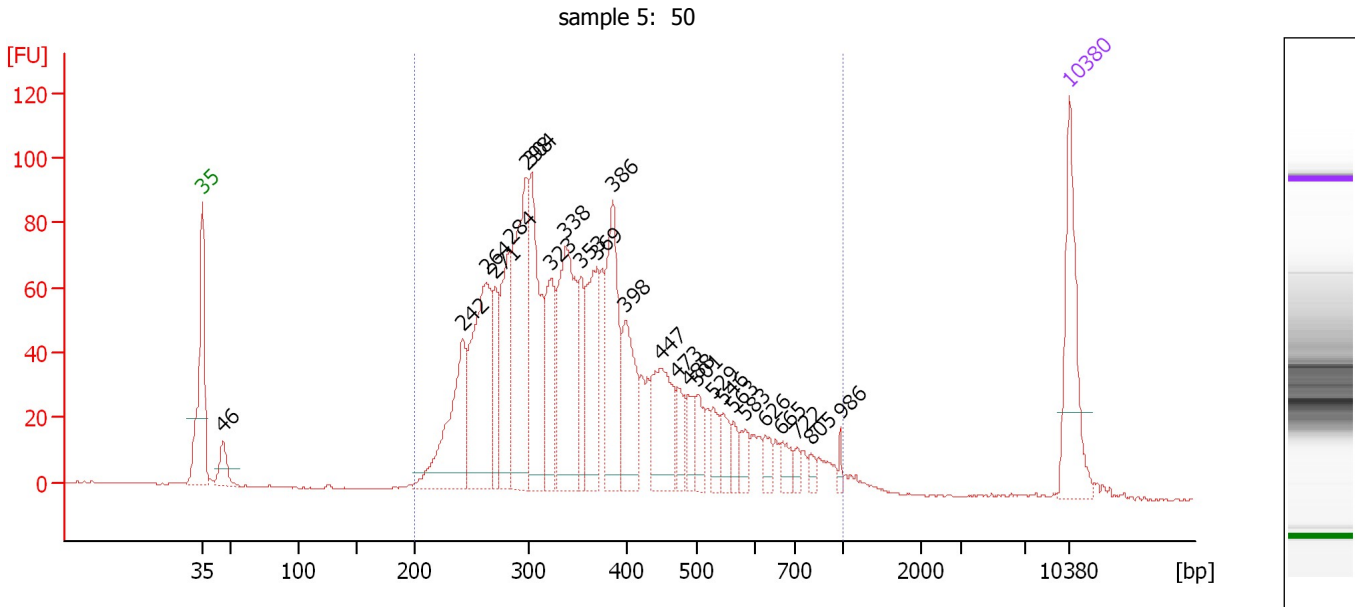
Region table for sample 4 : sample 4: 49

From [bp]	Average Size [bp]	To [bp]	Corr. Area	Molarity [pmol/l]	% of Total	Size distribution in CV [%]	Conc. [pg/ μ l]	Color
200	395	1,000	1,720.4	9,950.8	95	37.2	2,253.26	

Assay Class: High Sensitivity DNA Assay
 Data Path: C:\...ents and Settings\Bioanalyzer\2015-05-20\2015-05-20_005.xad

Created: 5/20/2015 2:47:09 PM
 Modified: 5/20/2015 3:27:39 PM

Electropherogram Summary Continued ...



Overall Results for sample 5 : sample 5: 50

Number of peaks found: 26 Corr. Area 1: 1,944.6
 Noise: 0.2

Peak table for sample 5 : sample 5: 50

Peak	Size [bp]	Conc. [pg/μl]	Molarity [pmol/l]	Observations	Aligned Migration Time [s]
1	35	125.00	5,411.3	Lower Marker	43.00
2	46	31.91	1,050.1		44.68
3	242	140.43	877.4		64.01
4	264	190.19	1,093.1		65.95
5	271	57.59	321.8		66.63
6	284	99.37	529.6		67.84
7	298	192.49	977.5		69.13
8	304	145.58	726.7		69.56
9	323	83.79	392.5		71.15
10	338	170.92	766.1		72.32
11	353	49.51	212.4		73.52
12	369	104.96	430.6		74.81
13	386	124.95	490.5		76.15
14	398	81.16	308.7		77.14
15	447	87.34	295.7		79.94
16	473	27.68	88.7		81.36
17	488	21.85	67.8		82.22
18	501	25.95	78.4		82.95
19	529	20.81	59.6		84.29
20	546	20.93	58.1		85.06
21	563	13.54	36.5		85.88
22	583	15.31	39.8		86.83
23	626	13.31	32.2		88.46
24	665	15.28	34.8		89.67
25	722	7.29	15.3		91.04

Assay Class: High Sensitivity DNA Assay
 Data Path: C:\...ents and Settings\Bioanalyzer\2015-05-20\2015-05-20_005.xad


Created: 5/20/2015 2:47:09 PM
 Modified: 5/20/2015 3:27:39 PM

Electropherogram Summary Continued ...

... Peak table for sample 5 : sample 5: 50

Peak	Size [bp]	Conc. [pg/ μ l]	Molarity [pmol/l]	Observations	Aligned Migration Time [s]
26	805	7.18	13.5		92.12
27	986	4.87	7.5		94.49
28	10,380	75.00	10.9	Upper Marker	113.00

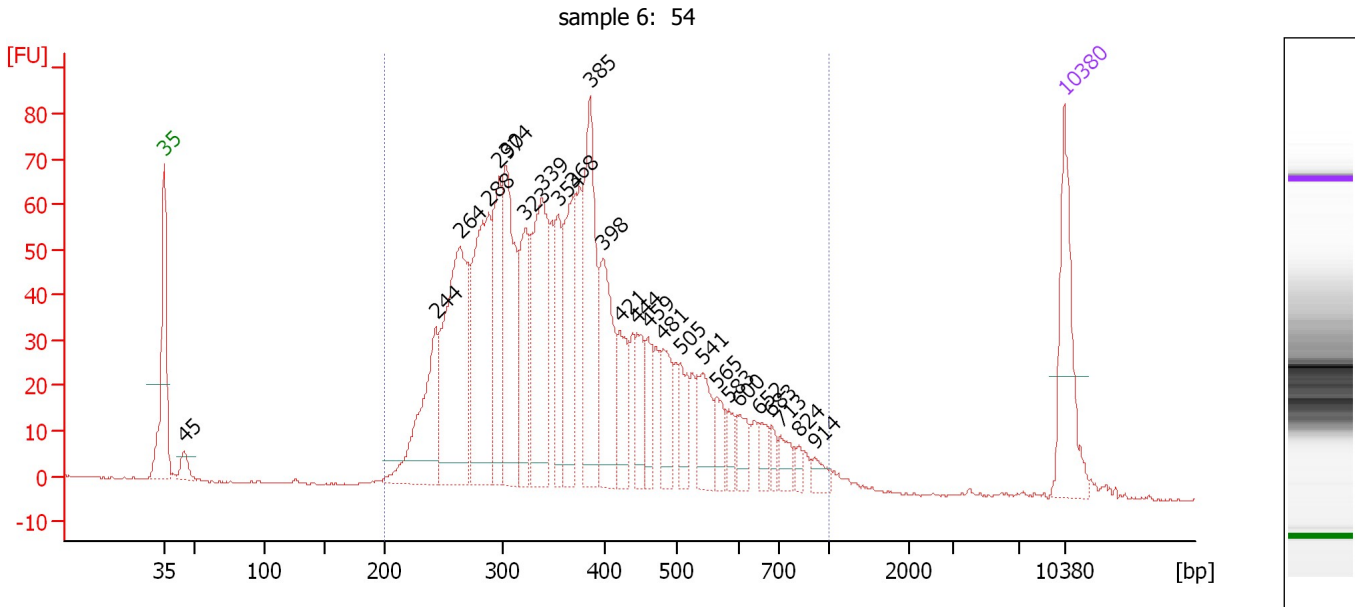
Region table for sample 5 : sample 5: 50

From [bp]	Average Size [bp]	To [bp]	Corr. Area	Molarity [pmol/l]	% of Total	Size distribution in CV [%]	Conc. [pg/ μ l]	Color
200	383	1,000	1,944.6	8,437.4	97	34.9	1,876.55	

Assay Class: High Sensitivity DNA Assay
 Data Path: C:\...ents and Settings\Bioanalyzer\2015-05-20\2015-05-20_005.xad

Created: 5/20/2015 2:47:09 PM
 Modified: 5/20/2015 3:27:39 PM

Electropherogram Summary Continued ...



Overall Results for sample 6 : sample 6: 54

Number of peaks found: 26 Corr. Area 1: 1,660.1
 Noise: 0.2

Peak table for sample 6 : sample 6: 54

Peak	Size [bp]	Conc. [pg/μl]	Molarity [pmol/l]	Observations	Aligned Migration Time [s]
1	35	125.00	5,411.3	Lower Marker	43.00
2	45	20.29	682.8		44.52
3	244	142.10	883.7		64.11
4	264	247.05	1,417.6		65.99
5	288	206.57	1,085.8		68.21
6	297	110.08	561.0		69.03
7	304	165.12	823.0		69.60
8	323	93.55	439.5		71.08
9	339	179.49	802.6		72.38
10	354	63.65	272.3		73.60
11	368	113.39	466.5		74.74
12	385	154.90	609.3		76.08
13	398	107.90	411.0		77.09
14	421	51.66	186.0		78.44
15	444	36.44	124.3		79.74
16	459	34.53	113.8		80.61
17	481	50.11	157.8		81.83
18	505	32.21	96.6		83.14
19	541	49.10	137.6		84.83
20	565	25.48	68.4		85.97
21	583	16.53	43.0		86.84
22	600	22.73	57.4		87.66
23	652	15.85	36.8		89.27
24	683	11.18	24.8		90.23
25	713	17.63	37.4		90.93

Assay Class: High Sensitivity DNA Assay
 Data Path: C:\...ents and Settings\Bioanalyzer\2015-05-20\2015-05-20_005.xad

Created: 5/20/2015 2:47:09 PM
 Modified: 5/20/2015 3:27:39 PM

Electropherogram Summary Continued ...

... Peak table for sample 6 : sample 6: 54

Peak	Size [bp]	Conc. [pg/μl]	Molarity [pmol/l]	Observations	Aligned Migration Time [s]
26	824	8.07	14.8		92.37
27	914	11.18	18.5		93.54
28	10,380	75.00	10.9	Upper Marker	113.00

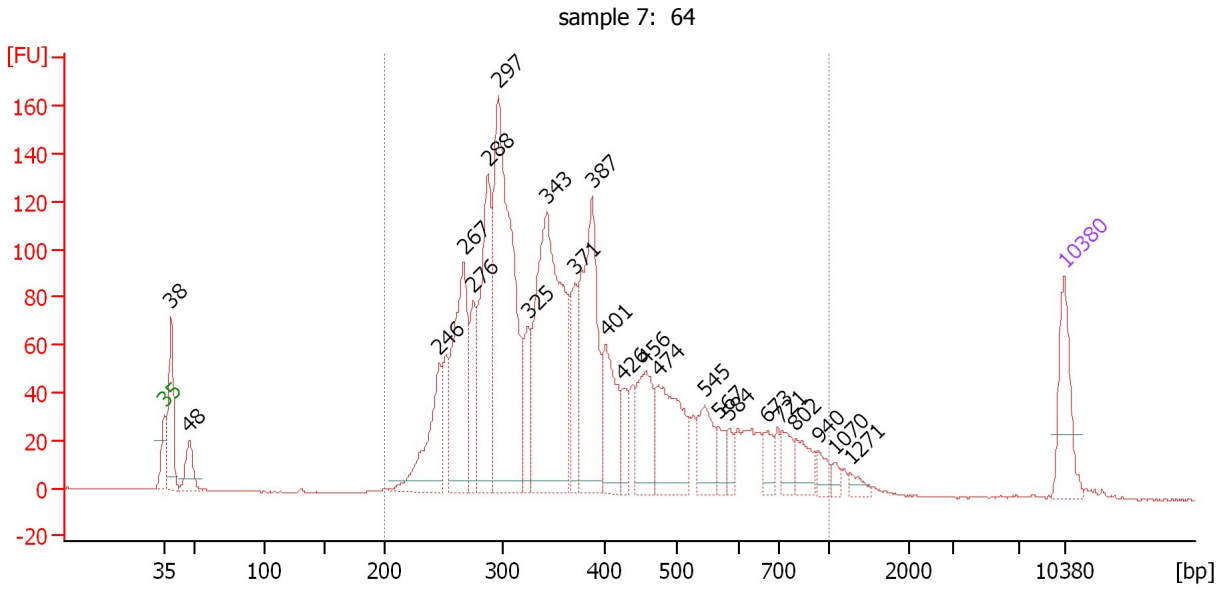
Region table for sample 6 : sample 6: 54

From [bp]	Average Size [bp]	To [bp]	Corr. Area	Molarity [pmol/l]	% of Total	Size distribution in CV [%]	Conc. [pg/μl]	Color
200	387	1,000	1,660.1	9,880.5	98	33.0	2,235.85	■

Assay Class: High Sensitivity DNA Assay
 Data Path: C:\...ents and Settings\Bioanalyzer\2015-05-20\2015-05-20_005.xad

Created: 5/20/2015 2:47:09 PM
 Modified: 5/20/2015 3:27:39 PM

Electropherogram Summary Continued ...



Overall Results for sample 7 : sample 7: 64

Number of peaks found: 24 Corr. Area 1: 2,589.5
 Noise: 0.2

Peak table for sample 7 : sample 7: 64

Peak	Size [bp]	Conc. [pg/μl]	Molarity [pmol/l]	Observations	Aligned Migration Time [s]
1	35	125.00	5,411.3	Lower Marker	43.00
2	38	147.01	5,791.5		43.53
3	48	61.20	1,944.6		44.93
4	246	162.22	997.8		64.36
5	267	269.55	1,527.5		66.29
6	276	96.64	531.5		67.04
7	288	267.86	1,409.5		68.18
8	297	587.39	3,001.0		68.96
9	325	74.86	348.8		71.29
10	343	516.99	2,281.9		72.74
11	371	91.99	376.0		74.93
12	387	293.13	1,147.0		76.25
13	401	127.29	480.6		77.34
14	426	42.97	153.0		78.70
15	456	114.83	381.6		80.41
16	474	160.12	512.0		81.42
17	545	69.50	193.3		85.02
18	567	27.82	74.4		86.07
19	584	21.66	56.2		86.90
20	673	32.54	73.2		89.93
21	721	34.25	72.0		91.03
22	802	38.86	73.4		92.08
23	940	19.05	30.7		93.88
24	1,070	10.46	14.8		95.11
25	1,271	12.63	15.1		96.38

Assay Class: High Sensitivity DNA Assay
 Data Path: C:\...ents and Settings\Bioanalyzer\2015-05-20\2015-05-20_005.xad


Created: 5/20/2015 2:47:09 PM
 Modified: 5/20/2015 3:27:39 PM

Electropherogram Summary Continued ...

... Peak table for sample 7 : sample 7: 64

Peak	Size [bp]	Conc. [pg/ μ l]	Molarity [pmol/l]	Observations	Aligned Migration Time [s]
26	10,380	75.00	10.9	Upper Marker	113.00

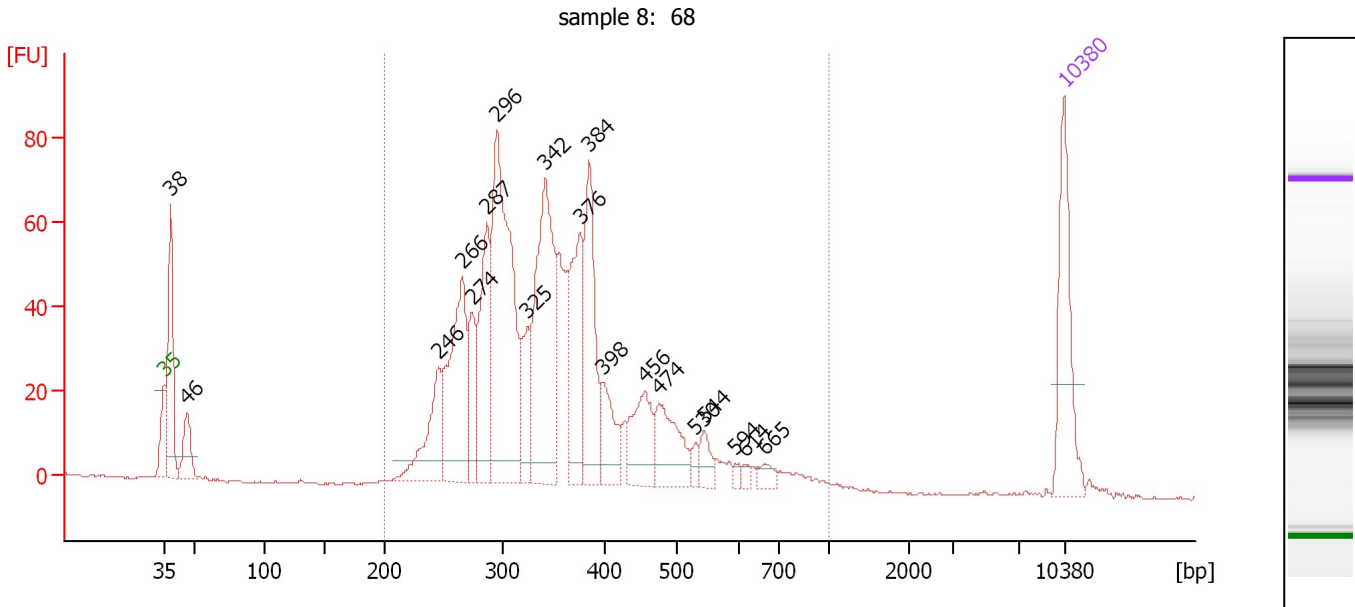
Region table for sample 7 : sample 7: 64

From [bp]	Average Size [bp]	To [bp]	Corr. Area	Molarity [pmol/l]	% of Total	Size distribution in CV [%]	Conc. [pg/ μ l]	Color
200	394	1,000	2,589.5	14,410.3	94	36.1	3,281.85	

Assay Class: High Sensitivity DNA Assay
 Data Path: C:\...ents and Settings\Bioanalyzer\2015-05-20\2015-05-20_005.xad

Created: 5/20/2015 2:47:09 PM
 Modified: 5/20/2015 3:27:39 PM

Electropherogram Summary Continued ...



Overall Results for sample 8 : sample 8: 68

Number of peaks found: 19 Corr. Area 1: 1,231.3
 Noise: 0.3

Peak table for sample 8 : sample 8: 68

Peak	Size [bp]	Conc. [pg/μl]	Molarity [pmol/l]	Observations	Aligned Migration Time [s]
1	35	125.00	5,411.3	Lower Marker	43.00
2	38	138.64	5,498.1		43.49
3	46	47.94	1,566.7		44.73
4	246	83.80	516.3		64.32
5	266	163.50	932.2		66.14
6	274	57.31	316.4		66.94
7	287	116.74	616.2		68.09
8	296	296.10	1,517.0		68.89
9	325	55.96	261.3		71.24
10	342	222.00	984.3		72.61
11	376	115.46	465.8		75.32
12	384	121.95	480.6		76.03
13	398	49.56	188.8		77.09
14	456	64.42	214.0		80.42
15	474	65.28	208.6		81.44
16	530	8.40	24.0		84.32
17	544	17.98	50.1		84.98
18	594	4.91	12.5		87.38
19	614	4.78	11.8		88.09
20	665	11.11	25.3		89.68
21	10,380	75.00	10.9	Upper Marker	113.00

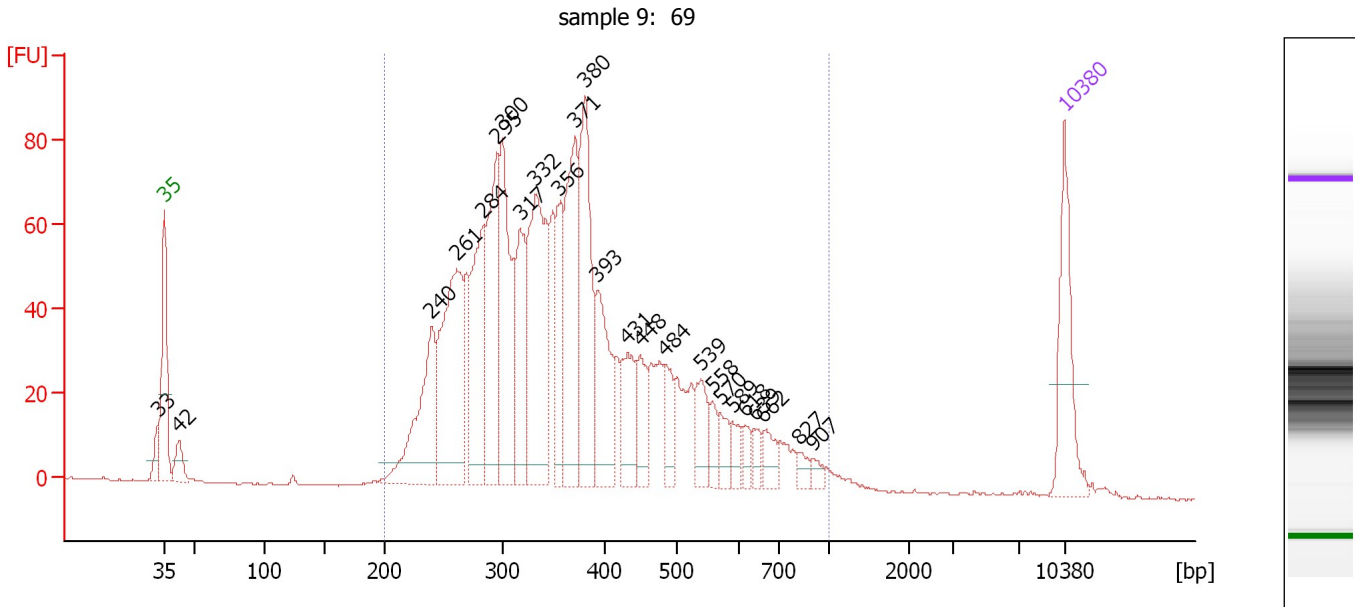
Region table for sample 8 : sample 8: 68

From [bp]	Average Size [bp]	To [bp]	Corr. Area	Molarity [pmol/l]	% of Total	Size distribution in CV [%]	Conc. [pg/μl]	Color
200	362	1,000	1,231.3	7,380.9	91	29.2	1,618.74	Blue

Assay Class: High Sensitivity DNA Assay
 Data Path: C:\...ents and Settings\Bioanalyzer\2015-05-20\2015-05-20_005.xad

Created: 5/20/2015 2:47:09 PM
 Modified: 5/20/2015 3:27:39 PM

Electropherogram Summary Continued ...



Overall Results for sample 9 : sample 9: 69

Number of peaks found: 25 Corr. Area 1: 1,697.1
 Noise: 0.2

Peak table for sample 9 : sample 9: 69

Peak	Size [bp]	Conc. [pg/μl]	Molarity [pmol/l]	Observations	Aligned Migration Time [s]
1	33	0.00	0.0		42.46
2	35	125.00	5,411.3	Lower Marker	43.00
3	42	33.43	1,194.4		44.13
4	240	159.39	1,006.9		63.77
5	261	231.97	1,344.2		65.75
6	284	152.23	812.0		67.82
7	295	170.63	875.3		68.86
8	300	178.95	902.8		69.31
9	317	112.23	536.0		70.66
10	332	232.01	1,057.3		71.87
11	356	81.68	348.0		73.72
12	371	167.10	682.7		74.94
13	380	176.05	701.2		75.70
14	393	101.17	390.2		76.69
15	431	59.38	208.5		79.04
16	448	45.60	154.1		79.98
17	484	34.97	109.6		81.96
18	539	40.82	114.7		84.76
19	558	19.61	53.2		85.66
20	570	22.10	58.7		86.24
21	589	18.48	47.5		87.14
22	618	13.78	33.8		88.23
23	639	14.06	33.3		88.86
24	662	22.42	51.3		89.58
25	827	10.69	19.6		92.41

Assay Class: High Sensitivity DNA Assay
 Data Path: C:\...ents and Settings\Bioanalyzer\2015-05-20\2015-05-20_005.xad

Created: 5/20/2015 2:47:09 PM
 Modified: 5/20/2015 3:27:39 PM

Electropherogram Summary Continued ...

... Peak table for sample 9 : sample 9: 69

Peak	Size [bp]	Conc. [pg/ μ l]	Molarity [pmol/l]	Observations	Aligned Migration Time [s]
26	907	8.56	14.3		93.45
27	10,380	75.00	10.9	Upper Marker	113.00

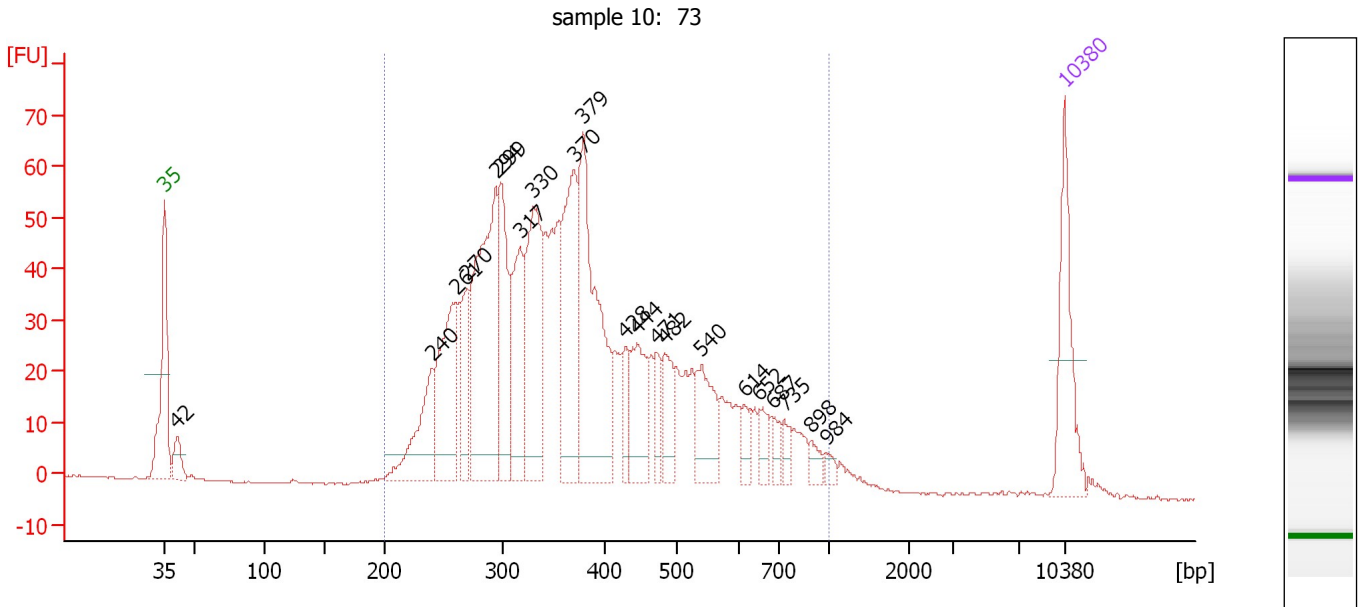
Region table for sample 9 : sample 9: 69

From [bp]	Average Size [bp]	To [bp]	Corr. Area	Molarity [pmol/l]	% of Total	Size distribution in CV [%]	Conc. [pg/ μ l]	Color
200	381	1,000	1,697.1	10,766.3	97	33.3	2,406.22	

Assay Class: High Sensitivity DNA Assay
 Data Path: C:\...ents and Settings\Bioanalyzer\2015-05-20\2015-05-20_005.xad

Created: 5/20/2015 2:47:09 PM
 Modified: 5/20/2015 3:27:39 PM

Electropherogram Summary Continued ...



Overall Results for sample 10 : sample 10: 73

Number of peaks found: 21 Corr. Area 1: 1,347.1
 Noise: 0.2

Peak table for sample 10 : sample 10: 73

Peak	Size [bp]	Conc. [pg/μl]	Molarity [pmol/l]	Observations	Aligned Migration Time [s]
1	35	125.00	5,411.3	Lower Marker	43.00
2	42	32.73	1,193.7		43.99
3	240	94.81	598.0		63.80
4	261	146.38	849.9		65.70
5	270	63.67	357.5		66.51
6	294	272.32	1,401.1		68.78
7	299	119.09	603.6		69.18
8	317	115.90	553.2		70.67
9	330	172.50	790.8		71.71
10	370	162.30	664.4		74.88
11	379	243.46	974.3		75.56
12	428	30.39	107.5		78.86
13	444	73.51	250.6		79.76
14	471	28.21	90.7		81.26
15	482	45.95	144.4		81.89
16	540	65.87	184.9		84.78
17	614	18.66	46.1		88.08
18	652	19.84	46.1		89.26
19	687	13.91	30.7		90.34
20	735	13.46	27.8		91.20
21	898	12.48	21.1		93.33
22	984	7.00	10.8		94.46
23	10,380	75.00	10.9	Upper Marker	113.00

Assay Class: High Sensitivity DNA Assay
Data Path: C:\...ents and Settings\Bioanalyzer\2015-05-20\2015-05-20_005.xad

Created: 5/20/2015 2:47:09 PM
Modified: 5/20/2015 3:27:39 PM

Electropherogram Summary Continued ...

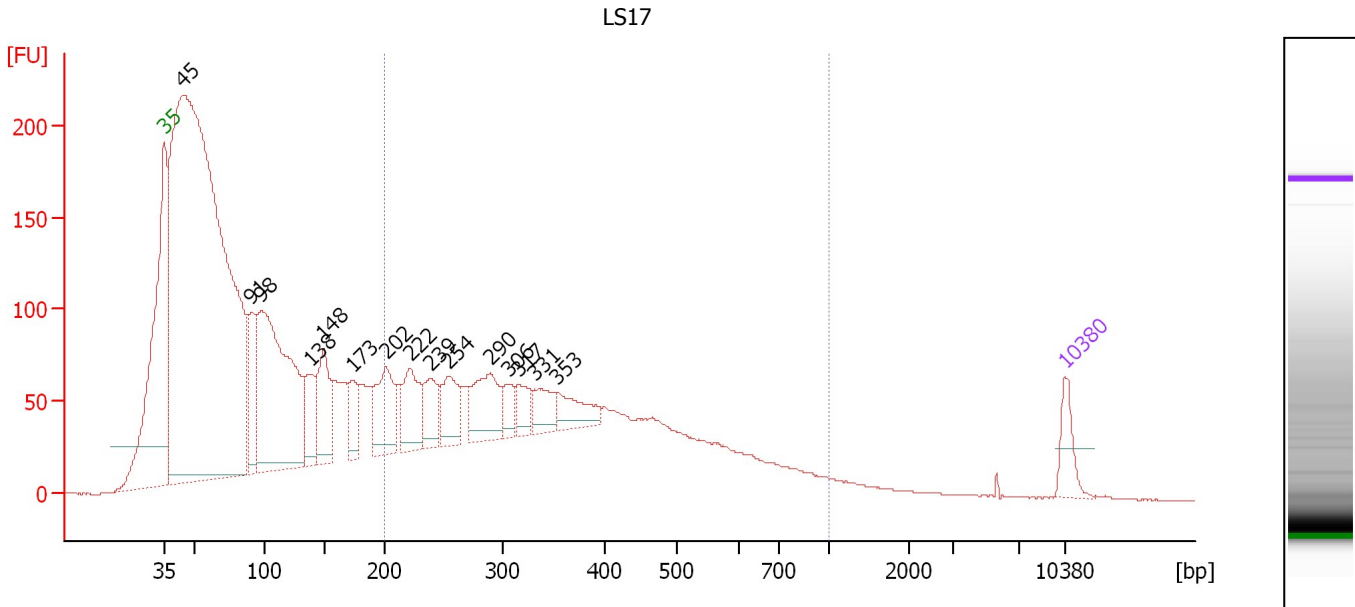
... Region table for sample 10 : sample 10: 73

From [bp]	Average Size [bp]	To [bp]	Corr. Area	Molarity [pmol/l]	% of Total	Size distribution in CV [%]	Conc. [pg/μl]	Color
200	399	1,000	1,347.1	9,549.2	97	35.3	2,195.27	■

Assay Class: High Sensitivity DNA Assay
 Data Path: C:\...ents and Settings\Bioanalyzer\2015-05-20\2015-05-20_005.xad

Created: 5/20/2015 2:47:09 PM
 Modified: 5/20/2015 3:27:39 PM

Electropherogram Summary Continued ...



Overall Results for sample 11 : LS17

Number of peaks found: 15 Corr. Area 1: 2,118.6
 Noise: 0.2

Peak table for sample 11 : LS17

Peak	Size [bp]	Conc. [pg/μl]	Molarity [pmol/l]	Observations	Aligned Migration Time [s]
1	35	125.00	5,411.3	Lower Marker	43.00
2	45	5,663.70	192,822.1		44.45
3	91	284.81	4,756.4		49.76
4	98	1,235.38	19,195.9		50.51
5	138	190.89	2,095.0		54.38
6	148	291.36	2,974.5		55.36
7	173	144.41	1,263.4		57.64
8	202	280.70	2,110.1		60.26
9	222	218.57	1,492.4		62.12
10	239	147.45	934.0		63.71
11	254	180.88	1,077.0		65.11
12	290	246.04	1,285.2		68.37
13	306	72.02	357.2		69.72
14	317	84.86	406.1		70.61
15	331	106.53	487.3		71.77
16	353	121.91	522.6		73.55
17	10,380	75.00	10.9	Upper Marker	113.00

Region table for sample 11 : LS17

From [bp]	Average Size [bp]	To [bp]	Corr. Area	Molarity [pmol/l]	% of Total	Size distribution in CV [%]	Conc. [pg/μl]	Color
200	376	1,000	2,118.6	18,659.0	36	39.4	3,888.29	Blue

Assay Class: High Sensitivity DNA Assay
Data Path: C:\...ents and Settings\Bioanalyzer\2015-05-20\2015-05-20_005.xad

Created: 5/20/2015 2:47:09 PM
Modified: 5/20/2015 3:27:39 PM

Gel Image

