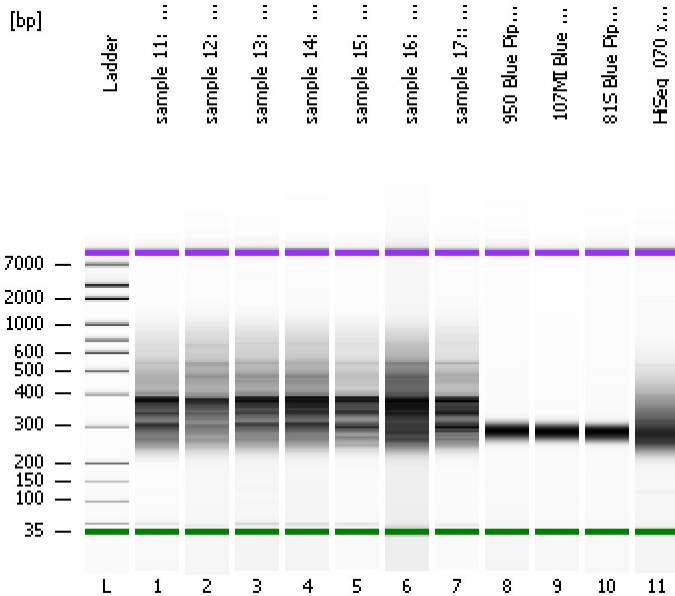


Assay Class: High Sensitivity DNA Assay
Data Path: C:\...ents and Settings\Bioanalyzer\2015-05-21\2015-05-21_001.xad

Created: 5/21/2015 8:42:25 AM
Modified: 5/21/2015 9:23:46 AM

Electrophoresis File Run Summary



Instrument Information:

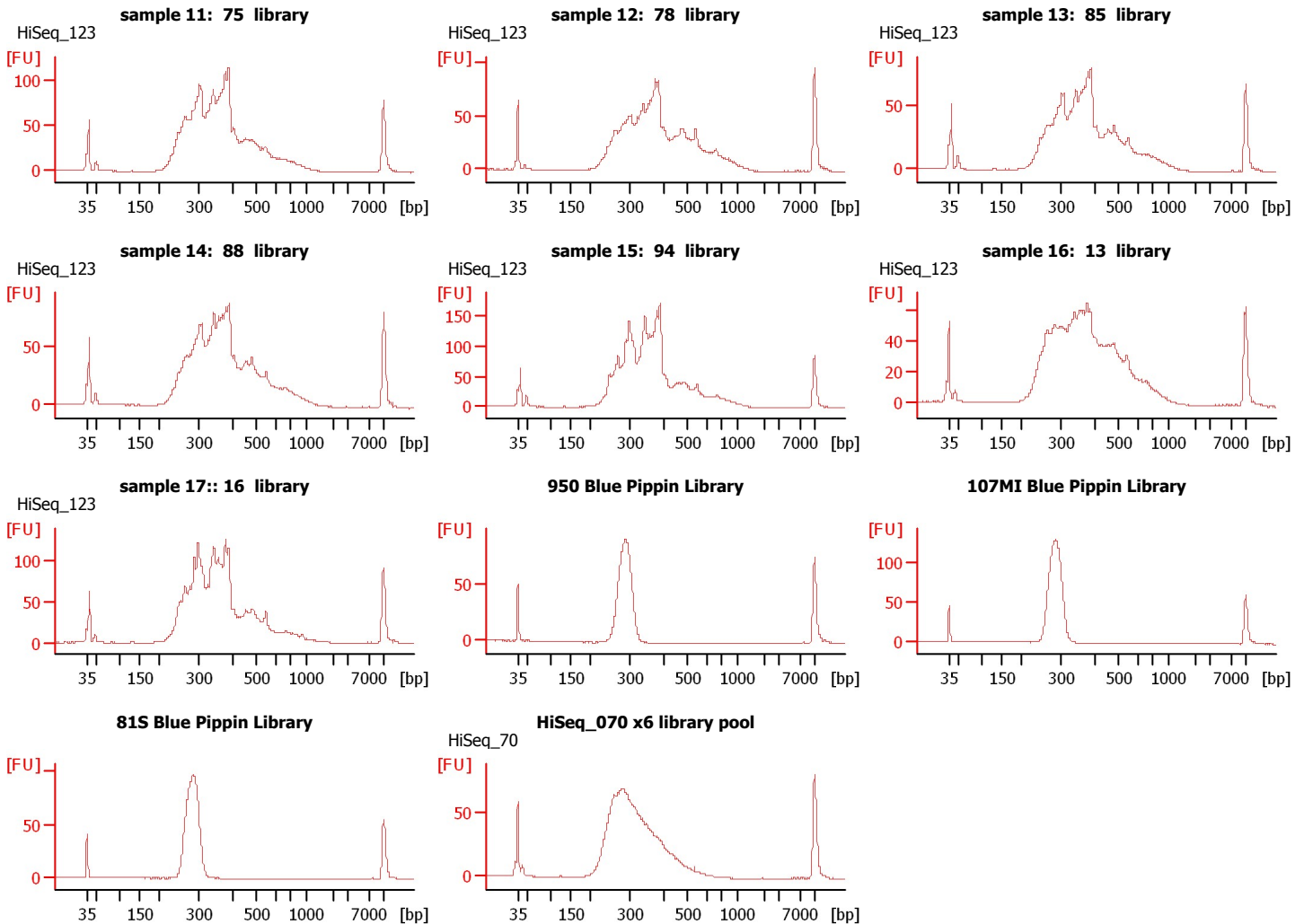
Instrument Name: DE13701086 Firmware: C.01.069
Serial#: DE13701086 Type: G2938B

Assay Information:

Assay Origin Path: C:\Program Files\Agilent\2100 bioanalyzer\2100 expert\assays\dsDNA\High Sensitivity DNA.xsy
Assay Class: High Sensitivity DNA Assay
Version: 1.03
Assay Comments: Copyright © 2003-2010 Agilent Technologies

Chip Information:

Chip Lot #:
Reagent Kit Lot #:
Chip Comments:



Assay Class: High Sensitivity DNA Assay
Data Path: C:\...ents and Settings\Bioanalyzer\2015-05-21\2015-05-21_001.xad

Created: 5/21/2015 8:42:25 AM
Modified: 5/21/2015 9:23:46 AM

Electrophoresis File Run Summary (Chip Summary)

Sample Name	Sample Comment	Rest. Digest	Status	Observation	Result Label	Result Color
sample 11: 75 library	HiSeq_123	<input type="checkbox"/>	✓			
sample 12: 78 library	HiSeq_123	<input type="checkbox"/>	✓			
sample 13: 85 library	HiSeq_123	<input type="checkbox"/>	✓			
sample 14: 88 library	HiSeq_123	<input type="checkbox"/>	✓			
sample 15: 94 library	HiSeq_123	<input type="checkbox"/>	✓			
sample 16: 13 library	HiSeq_123	<input type="checkbox"/>	✓			
sample 17:: 16 library	HiSeq_123	<input type="checkbox"/>	✓			
950 Blue Pippin Library		<input type="checkbox"/>	✓			
107MI Blue Pippin Library		<input type="checkbox"/>	✓			
81S Blue Pippin Library		<input type="checkbox"/>	✓			
HiSeq_070 x6 library pool	HiSeq_70	<input type="checkbox"/>	✓			
Ladder		<input type="checkbox"/>	✓			

Chip Lot #

Reagent Kit Lot #

Chip Comments :

Assay Class: High Sensitivity DNA Assay
Data Path: C:\...ents and Settings\Bioanalyzer\2015-05-21\2015-05-21_001.xad

Created: 5/21/2015 8:42:25 AM
Modified: 5/21/2015 9:23:46 AM

Electrophoresis Assay Details

General Analysis Settings

Number of Available Sample and Ladder Wells (Max.) : 12
Minimum Visible Range [s] : 32
Maximum Visible Range [s] : 138
Start Analysis Time Range [s] : 33
End Analysis Time Range [s] : 137.5
Ladder Concentration [pg/μl] : 1950
Uses Standard Area for Ladder Fragments
Lower Marker Concentration [pg/μl] : 125
Upper Marker Concentration [pg/μl] : 75
Used Upper Marker for Quantitation
Standard Curve Fit is Point to Point
Show Data Aligned to Lower and Upper Marker

Integrator Settings

Integration Start Time [s] : 33.05
Integration End Time [s] : 137
Slope Threshold : 0.8
Height Threshold [FU] : 5
Area Threshold : 0.1
Width Threshold [s] : 0.6
Baseline Plateau [s] : 0.5

Filter Settings

Filter Width [s] : 0.5
Polynomial Order : 4

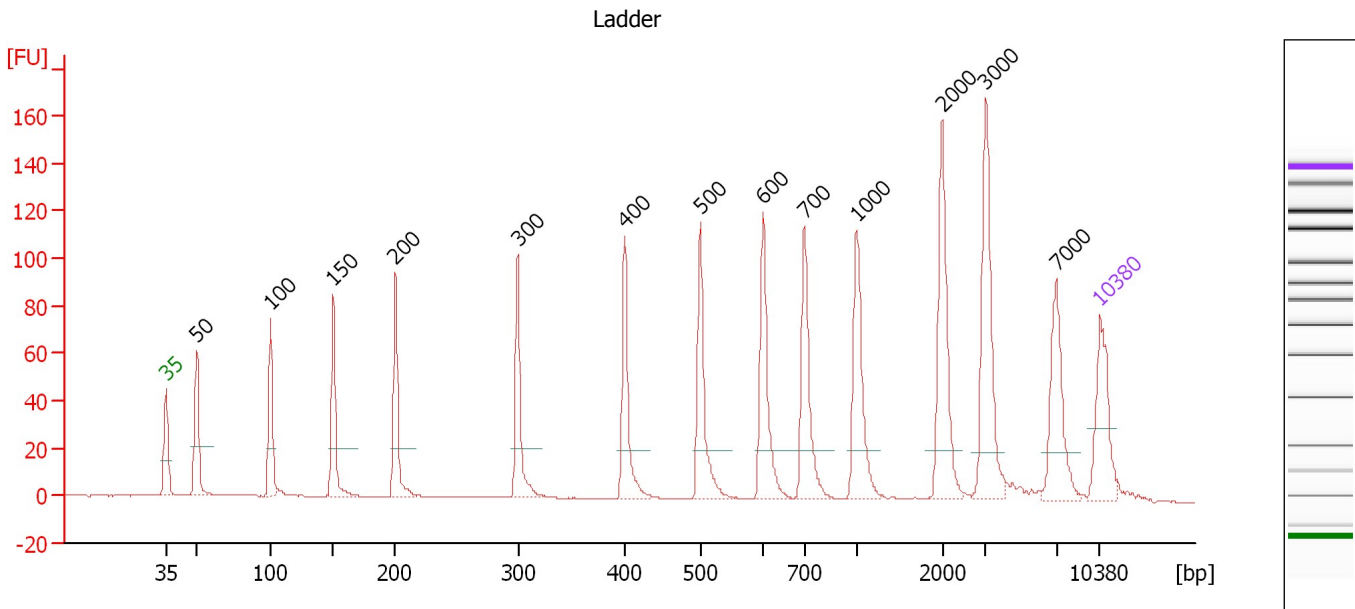
Ladder

Ladder Peak	Size	Area
1	35	160
2	50	210
3	100	208
4	150	221
5	200	242
6	300	270
7	400	305
8	500	306
9	600	336
10	700	321
11	1000	366
12	2000	413
13	3000	411
14	7000	400
15	10380	214

Assay Class: High Sensitivity DNA Assay
 Data Path: C:\...ents and Settings\Bioanalyzer\2015-05-21\2015-05-21_001.xad

Created: 5/21/2015 8:42:25 AM
 Modified: 5/21/2015 9:23:46 AM

Electropherogram Summary



Overall Results for Ladder

Noise: 0.2

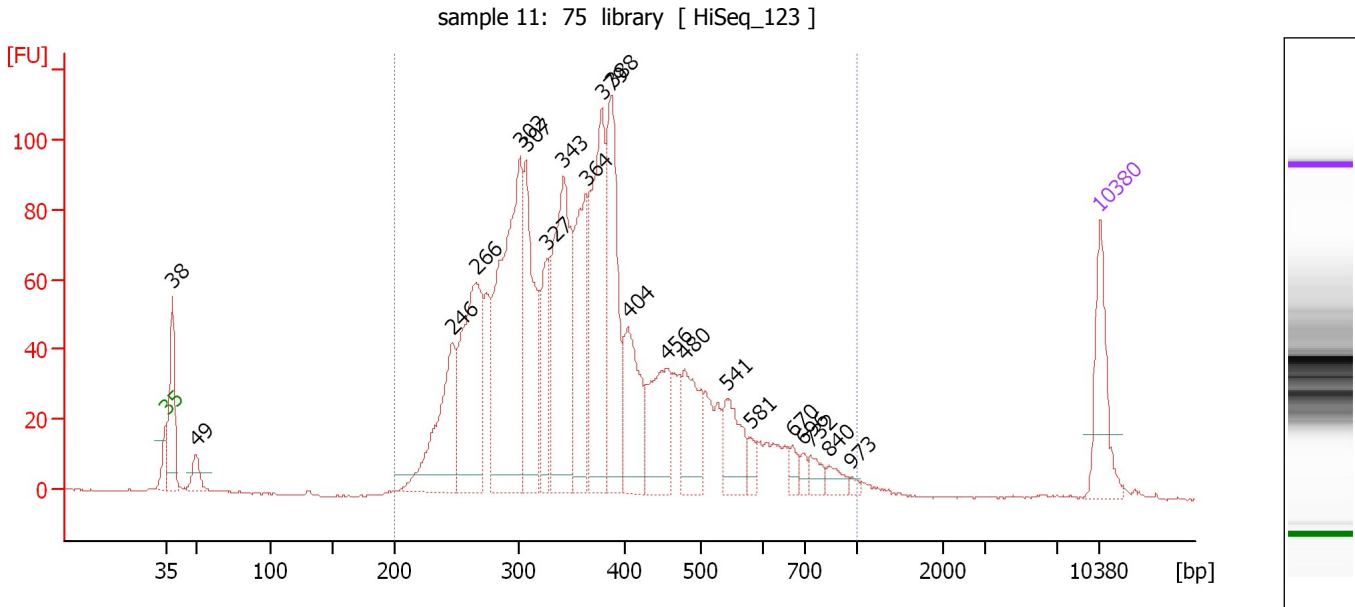
Peak table for Ladder

Peak	Size [bp]	Conc. [pg/μl]	Molarity [pmol/l]	Observations	Aligned Migration Time [s]
1	35	125.00	5,411.3	Lower Marker	43.00
2	50	150.00	4,545.5	Ladder Peak	45.30
3	100	150.00	2,272.7	Ladder Peak	50.84
4	150	150.00	1,515.2	Ladder Peak	55.54
5	200	150.00	1,136.4	Ladder Peak	60.19
6	300	150.00	757.6	Ladder Peak	69.36
7	400	150.00	568.2	Ladder Peak	77.38
8	500	150.00	454.5	Ladder Peak	83.05
9	600	150.00	378.8	Ladder Peak	87.75
10	700	150.00	324.7	Ladder Peak	90.85
11	1,000	150.00	227.3	Ladder Peak	94.75
12	2,000	150.00	113.6	Ladder Peak	101.17
13	3,000	150.00	75.8	Ladder Peak	104.41
14	7,000	150.00	32.5	Ladder Peak	109.72
15	10,380	75.00	10.9	Upper Marker	113.00

Assay Class: High Sensitivity DNA Assay
 Data Path: C:\...ents and Settings\Bioanalyzer\2015-05-21\2015-05-21_001.xad

Created: 5/21/2015 8:42:25 AM
 Modified: 5/21/2015 9:23:46 AM

Electropherogram Summary Continued ...



Overall Results for sample 1 : sample 11: 75 library

Number of peaks found: 21 Corr. Area 1: 2,005.9
 Noise: 0.2

Peak table for sample 1 : sample 11: 75 library

Peak	Size [bp]	Conc. [pg/μl]	Molarity [pmol/l]	Observations	Aligned Migration Time [s]
1	35	125.00	5,411.3	Lower Marker	43.00
2	38	143.62	5,745.1		43.44
3	49	37.11	1,138.5		45.21
4	246	210.23	1,293.4		64.43
5	266	291.50	1,663.2		66.20
6	302	456.97	2,289.0		69.56
7	307	214.91	1,059.1		69.96
8	327	93.89	434.7		71.55
9	343	311.36	1,376.6		72.79
10	364	187.99	783.3		74.46
11	379	269.98	1,080.7		75.66
12	388	224.67	877.6		76.41
13	404	135.32	507.6		77.60
14	456	126.22	419.3		80.56
15	480	97.10	306.8		81.89
16	541	74.82	209.5		84.98
17	581	17.33	45.2		86.84
18	670	15.55	35.1		89.93
19	696	12.18	26.5		90.73
20	732	19.74	40.9		91.26
21	840	17.53	31.6		92.67
22	973	5.49	8.6		94.40
23	10,380	75.00	10.9	Upper Marker	113.00

Assay Class: High Sensitivity DNA Assay
Data Path: C:\...ents and Settings\Bioanalyzer\2015-05-21\2015-05-21_001.xad

Created: 5/21/2015 8:42:25 AM
Modified: 5/21/2015 9:23:46 AM

Electropherogram Summary Continued ...

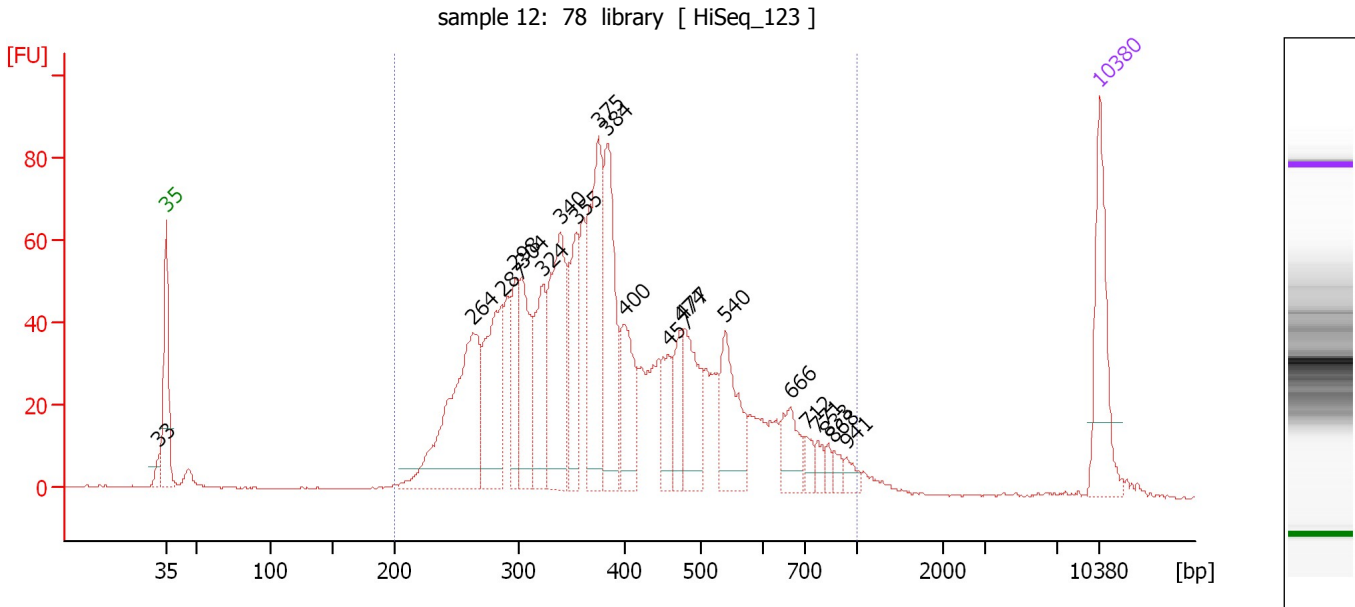
... Region table for sample 1 : sample 11: 75 library

From [bp]	Average Size [bp]	To [bp]	Corr. Area	Molarity [pmol/l]	% of Total	Size distribution in CV [%]	Conc. [pg/ μ l]	Color
200	379	1,000	2,005.9	13,852.4	95	31.1	3,123.40	■

Assay Class: High Sensitivity DNA Assay
 Data Path: C:\...ents and Settings\Bioanalyzer\2015-05-21\2015-05-21_001.xad

Created: 5/21/2015 8:42:25 AM
 Modified: 5/21/2015 9:23:46 AM

Electropherogram Summary Continued ...



Overall Results for sample 2 : sample 12: 78 library

Number of peaks found: 21 Corr. Area 1: 1,559.0
 Noise: 0.2

Peak table for sample 2 : sample 12: 78 library

Peak	Size [bp]	Conc. [pg/μl]	Molarity [pmol/l]	Observations	Aligned Migration Time [s]
1	33	0.00	0.0		42.46
2	35	125.00	5,411.3	Lower Marker	43.00
3	264	241.33	1,386.5		66.03
4	287	140.95	744.6		68.15
5	298	65.78	334.3		69.19
6	304	105.04	523.5		69.68
7	324	91.23	427.0		71.26
8	340	158.07	704.4		72.57
9	355	79.30	338.8		73.74
10	375	167.75	677.0		75.41
11	384	139.76	551.7		76.08
12	400	78.38	297.2		77.35
13	457	43.86	145.3		80.64
14	474	43.16	137.9		81.58
15	477	84.54	268.8		81.72
16	540	84.13	236.2		84.92
17	666	40.14	91.3		89.79
18	712	11.42	24.3		91.00
19	771	11.28	22.2		91.77
20	833	7.84	14.3		92.58
21	868	8.96	15.6		93.03
22	941	10.10	16.3		93.98
23	10,380	75.00	10.9	Upper Marker	113.00

Assay Class: High Sensitivity DNA Assay
Data Path: C:\...ents and Settings\Bioanalyzer\2015-05-21\2015-05-21_001.xad

Created: 5/21/2015 8:42:25 AM
Modified: 5/21/2015 9:23:46 AM

Electropherogram Summary Continued ...

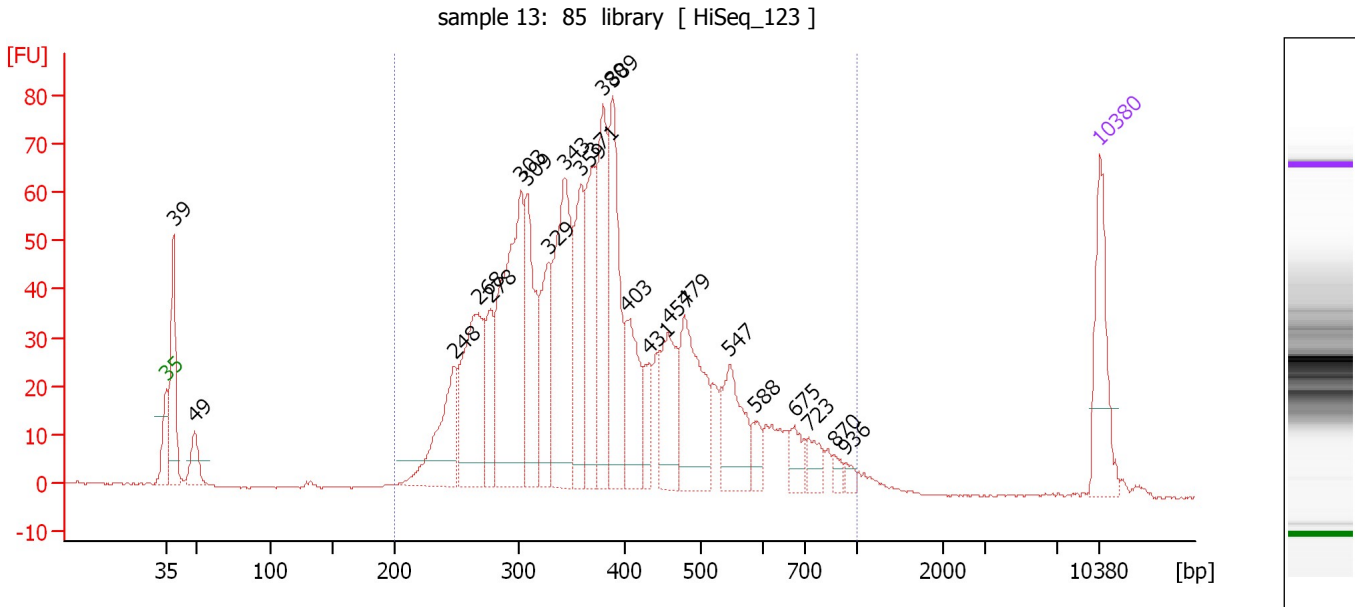
... Region table for sample 2 : sample 12: 78 library

From [bp]	Average Size [bp]	To [bp]	Corr. Area	Molarity [pmol/l]	% of Total	Size distribution in CV [%]	Conc. [pg/μl]	Color
200	406	1,000	1,559.0	8,447.6	96	33.2	1,997.12	■

Assay Class: High Sensitivity DNA Assay
 Data Path: C:\...ents and Settings\Bioanalyzer\2015-05-21\2015-05-21_001.xad

Created: 5/21/2015 8:42:25 AM
 Modified: 5/21/2015 9:23:46 AM

Electropherogram Summary Continued ...



Overall Results for sample 3 : sample 13: 85 library

Number of peaks found: 23 Corr. Area 1: 1,447.5
 Noise: 0.2

Peak table for sample 3 : sample 13: 85 library

Peak	Size [bp]	Conc. [pg/μl]	Molarity [pmol/l]	Observations	Aligned Migration Time [s]
1	35	125.00	5,411.3	Lower Marker	43.00
2	39	145.02	5,700.0		43.55
3	49	45.36	1,405.5		45.13
4	248	125.34	764.7		64.62
5	268	196.57	1,112.8		66.39
6	278	72.10	393.6		67.30
7	303	300.14	1,502.5		69.57
8	309	151.43	742.8		70.07
9	329	98.82	455.5		71.66
10	343	222.39	981.1		72.84
11	359	124.34	524.3		74.12
12	371	125.23	511.9		75.02
13	380	154.51	616.6		75.75
14	389	168.88	658.2		76.48
15	403	93.57	352.2		77.52
16	431	35.33	124.1		79.16
17	457	90.18	299.0		80.61
18	479	144.21	456.5		81.84
19	547	84.08	233.0		85.25
20	588	20.28	52.2		87.20
21	675	26.51	59.5		90.06
22	723	22.69	47.5		91.15
23	870	8.75	15.2		93.06
24	936	7.93	12.8		93.92
25	10,380	75.00	10.9	Upper Marker	113.00

Assay Class: High Sensitivity DNA Assay
Data Path: C:\...ents and Settings\Bioanalyzer\2015-05-21\2015-05-21_001.xad

Created: 5/21/2015 8:42:25 AM
Modified: 5/21/2015 9:23:46 AM

Electropherogram Summary Continued ...

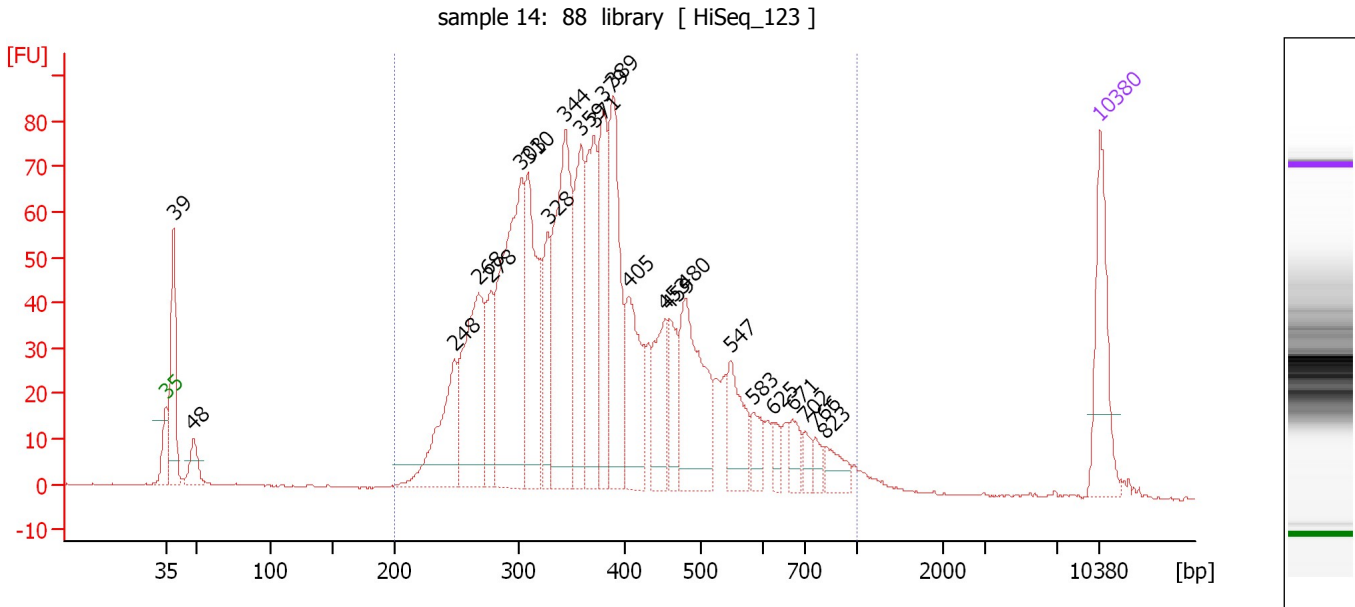
... Region table for sample 3 : sample 13: 85 library

From [bp]	Average Size [bp]	To [bp]	Corr. Area	Molarity [pmol/l]	% of Total	Size distribution in CV [%]	Conc. [pg/μl]	Color
200	396	1,000	1,447.5	10,590.4	93	32.2	2,469.55	■

Assay Class: High Sensitivity DNA Assay
 Data Path: C:\...ents and Settings\Bioanalyzer\2015-05-21\2015-05-21_001.xad

Created: 5/21/2015 8:42:25 AM
 Modified: 5/21/2015 9:23:46 AM

Electropherogram Summary Continued ...



Overall Results for sample 4 : sample 14: 88 library

Number of peaks found: 24 Corr. Area 1: 1,683.4
 Noise: 0.2

Peak table for sample 4 : sample 14: 88 library

Peak	Size [bp]	Conc. [pg/μl]	Molarity [pmol/l]	Observations	Aligned Migration Time [s]
1	35	125.00	5,411.3	Lower Marker	43.00
2	39	139.61	5,477.8		43.56
3	48	35.55	1,116.2		45.04
4	248	125.52	765.9		64.62
5	268	203.03	1,147.8		66.43
6	278	71.20	387.9		67.35
7	303	317.71	1,587.5		69.62
8	310	156.53	766.1		70.13
9	328	80.61	372.3		71.61
10	344	247.77	1,090.6		72.91
11	359	134.13	566.6		74.06
12	371	143.87	587.0		75.08
13	379	128.15	511.7		75.73
14	389	167.65	653.5		76.47
15	405	103.58	387.3		77.68
16	453	77.97	261.0		80.36
17	459	49.79	164.3		80.73
18	480	155.80	492.3		81.89
19	547	65.67	181.8		85.27
20	583	25.50	66.3		86.94
21	625	16.00	38.8		88.51
22	671	22.50	50.8		89.94
23	702	14.54	31.4		90.87
24	766	12.31	24.4		91.70
25	823	23.82	43.9		92.44

Assay Class: High Sensitivity DNA Assay
 Data Path: C:\...ents and Settings\Bioanalyzer\2015-05-21\2015-05-21_001.xad


Created: 5/21/2015 8:42:25 AM
 Modified: 5/21/2015 9:23:46 AM

Electropherogram Summary Continued ...

... Peak table for sample 4 : sample 14: 88 library

Peak	Size [bp]	Conc. [pg/μl]	Molarity [pmol/l]	Observations	Aligned Migration Time [s]
26	10,380	75.00	10.9	Upper Marker	113.00

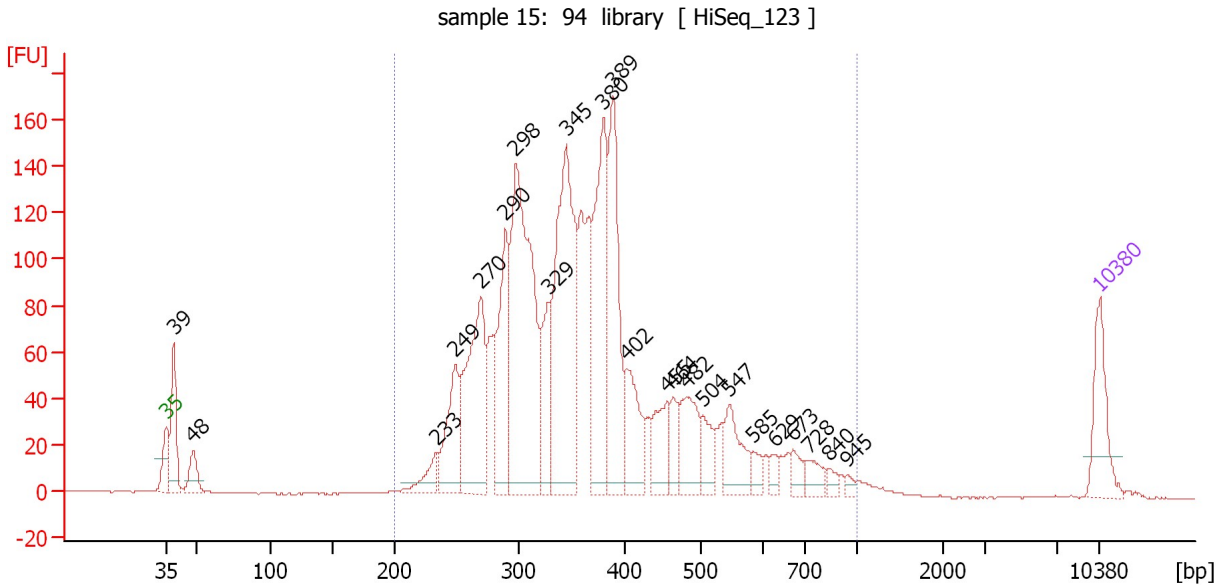
Region table for sample 4 : sample 14: 88 library

From [bp]	Average Size [bp]	To [bp]	Corr. Area	Molarity [pmol/l]	% of Total	Size distribution in CV [%]	Conc. [pg/μl]	Color
200	396	1,000	1,683.4	10,829.8	93	32.1	2,529.79	

Assay Class: High Sensitivity DNA Assay
 Data Path: C:\...ents and Settings\Bioanalyzer\2015-05-21\2015-05-21_001.xad

Created: 5/21/2015 8:42:25 AM
 Modified: 5/21/2015 9:23:46 AM

Electropherogram Summary Continued ...



Overall Results for sample 5 : sample 15: 94 library

Number of peaks found: 23 Corr. Area 1: 2,605.1
 Noise: 0.2

Peak table for sample 5 : sample 15: 94 library

Peak	Size [bp]	Conc. [pg/μl]	Molarity [pmol/l]	Observations	Aligned Migration Time [s]
1	35	125.00	5,411.3	Lower Marker	43.00
2	39	131.82	5,165.0		43.56
3	48	53.25	1,675.7		45.02
4	233	47.93	311.4		63.23
5	249	152.47	929.4		64.64
6	270	301.50	1,691.5		66.62
7	290	234.18	1,223.4		68.45
8	298	549.88	2,793.8		69.20
9	329	117.54	541.3		71.69
10	345	461.30	2,023.6		73.00
11	380	303.17	1,209.1		75.77
12	389	264.11	1,029.5		76.47
13	402	116.68	439.5		77.51
14	455	81.58	271.5		80.51
15	464	46.06	150.3		81.03
16	482	100.81	317.1		82.01
17	504	45.61	137.1		83.23
18	547	83.42	231.1		85.25
19	585	20.92	54.2		87.04
20	629	17.67	42.6		88.63
21	673	25.34	57.1		90.00
22	728	29.96	62.3		91.22
23	840	11.38	20.5		92.67
24	945	7.92	12.7		94.03
25	10,380	75.00	10.9	Upper Marker	113.00

Assay Class: High Sensitivity DNA Assay
Data Path: C:\...ents and Settings\Bioanalyzer\2015-05-21\2015-05-21_001.xad

Created: 5/21/2015 8:42:25 AM
Modified: 5/21/2015 9:23:46 AM

Electropherogram Summary Continued ...

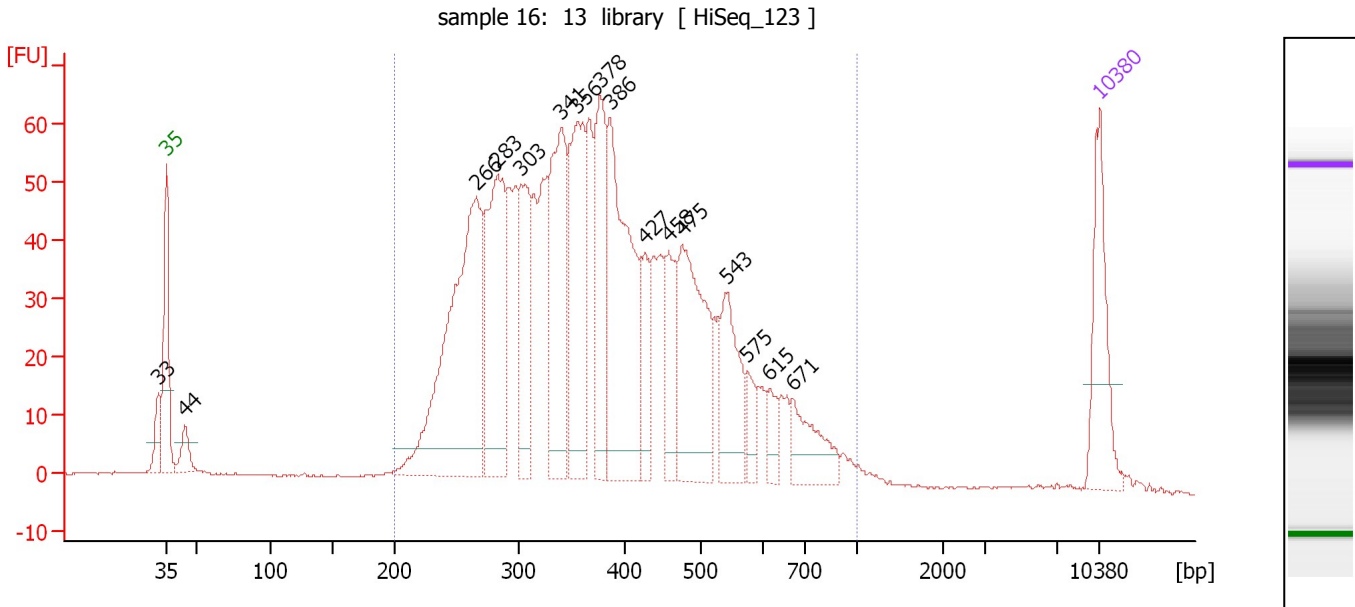
... Region table for sample 5 : sample 15: 94 library

From [bp]	Average Size [bp]	To [bp]	Corr. Area	Molarity [pmol/l]	% of Total	Size distribution in CV [%]	Conc. [pg/μl]	Color
200	380	1,000	2,605.1	15,261.7	95	30.9	3,467.56	■

Assay Class: High Sensitivity DNA Assay
 Data Path: C:\...ents and Settings\Bioanalyzer\2015-05-21\2015-05-21_001.xad

Created: 5/21/2015 8:42:25 AM
 Modified: 5/21/2015 9:23:46 AM

Electropherogram Summary Continued ...



Overall Results for sample 6 : sample 16: 13 library

Number of peaks found: 16 Corr. Area 1: 1,597.3
 Noise: 0.2

Peak table for sample 6 : sample 16: 13 library

Peak	Size [bp]	Conc. [pg/μl]	Molarity [pmol/l]	Observations	Aligned Migration Time [s]
1	33	0.00	0.0		42.43
2	35	125.00	5,411.3	Lower Marker	43.00
3	44	33.07	1,137.7		44.39
4	266	406.30	2,317.8		66.21
5	283	223.34	1,194.3		67.83
6	303	120.69	603.5		69.60
7	341	204.36	909.1		72.62
8	356	188.27	802.3		73.81
9	378	134.85	541.1		75.58
10	386	251.25	986.3		76.25
11	427	53.50	190.0		78.89
12	458	67.28	222.7		80.66
13	475	191.76	611.0		81.66
14	543	97.11	271.1		85.06
15	575	25.37	66.8		86.59
16	615	23.73	58.4		88.22
17	671	59.39	134.2		89.94
18	10,380	75.00	10.9	Upper Marker	113.00

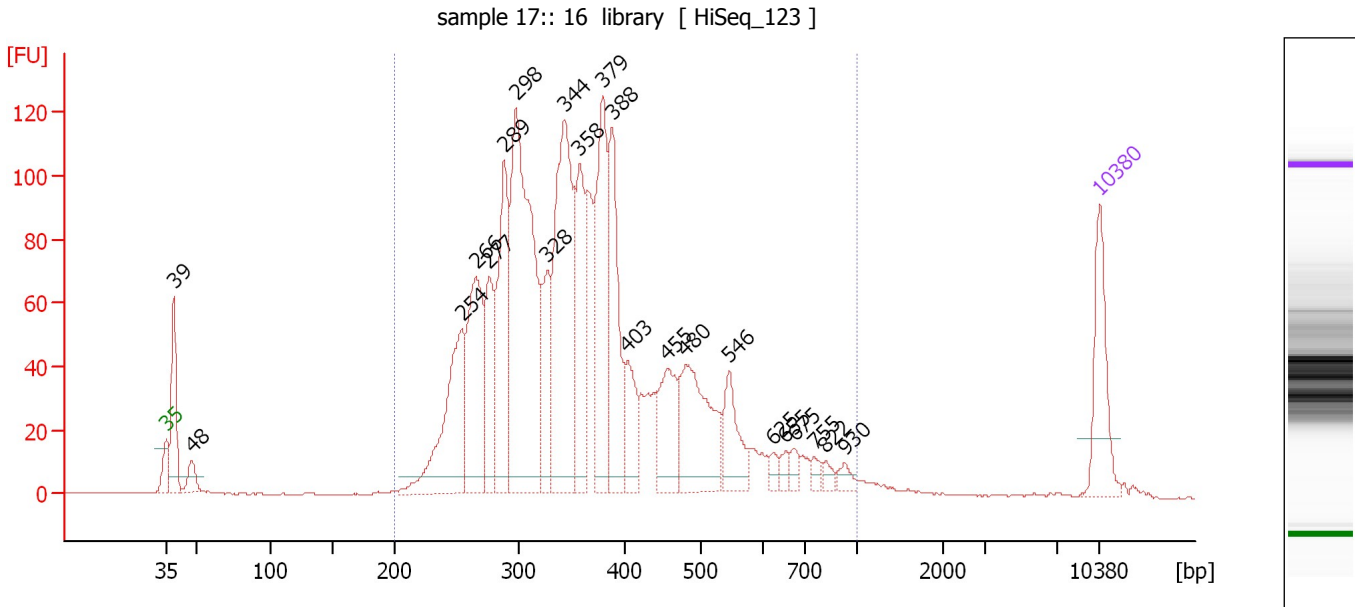
Region table for sample 6 : sample 16: 13 library

From [bp]	Average Size [bp]	To [bp]	Corr. Area	Molarity [pmol/l]	% of Total	Size distribution in CV [%]	Conc. [pg/μl]	Color
200	395	1,000	1,597.3	11,614.1	95	31.9	2,680.94	Blue

Assay Class: High Sensitivity DNA Assay
 Data Path: C:\...ents and Settings\Bioanalyzer\2015-05-21\2015-05-21_001.xad

Created: 5/21/2015 8:42:25 AM
 Modified: 5/21/2015 9:23:46 AM

Electropherogram Summary Continued ...



Overall Results for sample 7 : sample 17:: 16 library

Number of peaks found: 22 Corr. Area 1: 2,191.8
 Noise: 0.2

Peak table for sample 7 : sample 17:: 16 library

Peak	Size [bp]	Conc. [pg/μl]	Molarity [pmol/l]	Observations	Aligned Migration Time [s]
1	35	125.00	5,411.3	Lower Marker	43.00
2	39	124.13	4,850.6		43.58
3	48	29.67	944.8		44.93
4	254	217.22	1,294.8		65.16
5	266	202.93	1,157.0		66.22
6	277	118.04	646.1		67.23
7	289	198.80	1,042.6		68.34
8	298	465.77	2,365.0		69.21
9	328	96.10	444.4		71.58
10	344	344.70	1,518.6		72.88
11	358	147.25	623.6		73.99
12	379	200.87	802.1		75.73
13	388	168.86	659.6		76.41
14	403	70.58	265.2		77.57
15	455	93.66	311.7		80.51
16	480	162.44	512.9		81.91
17	546	67.60	187.7		85.19
18	625	11.75	28.5		88.52
19	655	11.22	26.0		89.44
20	675	12.89	28.9		90.07
21	755	10.35	20.8		91.57
22	822	9.52	17.5		92.43
23	930	11.30	18.4		93.83
24	10,380	75.00	10.9	Upper Marker	113.00

Assay Class: High Sensitivity DNA Assay
Data Path: C:\...ents and Settings\Bioanalyzer\2015-05-21\2015-05-21_001.xad

Created: 5/21/2015 8:42:25 AM
Modified: 5/21/2015 9:23:46 AM

Electropherogram Summary Continued ...

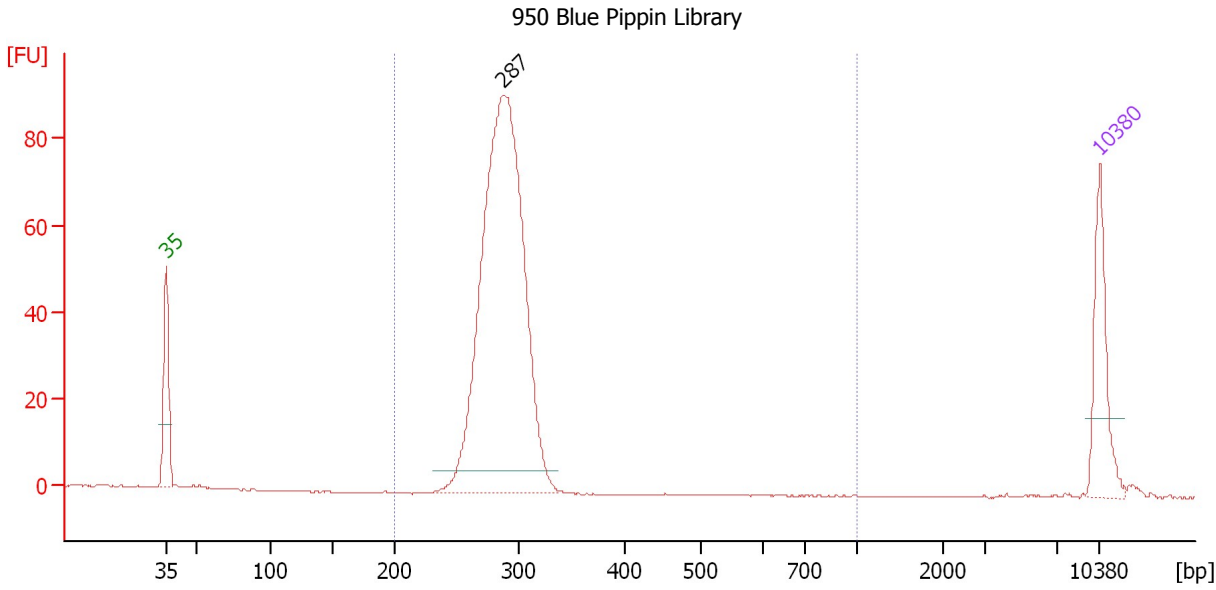
... Region table for sample 7 : sample 17:: 16 library

From [bp]	Average Size [bp]	To [bp]	Corr. Area	Molarity [pmol/l]	% of Total	Size distribution in CV [%]	Conc. [pg/μl]	Color
200	378	1,000	2,191.8	12,792.1	94	31.4	2,883.45	■

Assay Class: High Sensitivity DNA Assay
 Data Path: C:\...ents and Settings\Bioanalyzer\2015-05-21\2015-05-21_001.xad

Created: 5/21/2015 8:42:25 AM
 Modified: 5/21/2015 9:23:46 AM

Electropherogram Summary Continued ...



Overall Results for sample 8 : 950 Blue Pippin Library

Number of peaks found: 1 Corr. Area 1: 508.3
 Noise: 0.2

Peak table for sample 8 : 950 Blue Pippin Library

Peak	Size [bp]	Conc. [pg/μl]	Molarity [pmol/l]	Observations	Aligned Migration Time [s]
1	35	125.00	5,411.3	Lower Marker	43.00
2	287	885.67	4,677.7		68.16
3	10,380	75.00	10.9	Upper Marker	113.00

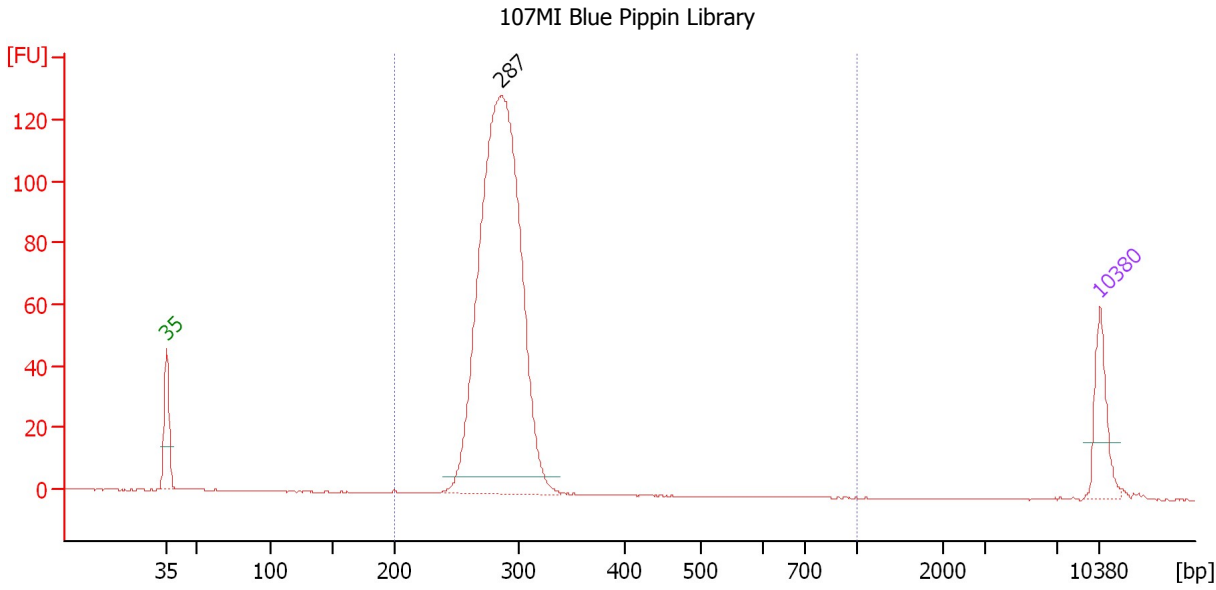
Region table for sample 8 : 950 Blue Pippin Library

From [bp]	Average Size [bp]	To [bp]	Corr. Area	Molarity [pmol/l]	% of Total	Size distribution in CV [%]	Conc. [pg/μl]	Color
200	288	1,000	508.3	4,581.3	99	5.4	868.10	Blue

Assay Class: High Sensitivity DNA Assay
 Data Path: C:\...ents and Settings\Bioanalyzer\2015-05-21\2015-05-21_001.xad

Created: 5/21/2015 8:42:25 AM
 Modified: 5/21/2015 9:23:46 AM

Electropherogram Summary Continued ...



Overall Results for sample 9 : 107MI Blue Pippin Library

Number of peaks found: 1 Corr. Area 1: 715.7
 Noise: 0.1

Peak table for sample 9 : 107MI Blue Pippin Library

Peak	Size [bp]	Conc. [pg/μl]	Molarity [pmol/l]	Observations	Aligned Migration Time [s]
1	35	125.00	5,411.3	Lower Marker	43.00
2	287	1,517.93	8,024.3		68.13
3	10,380	75.00	10.9	Upper Marker	113.00

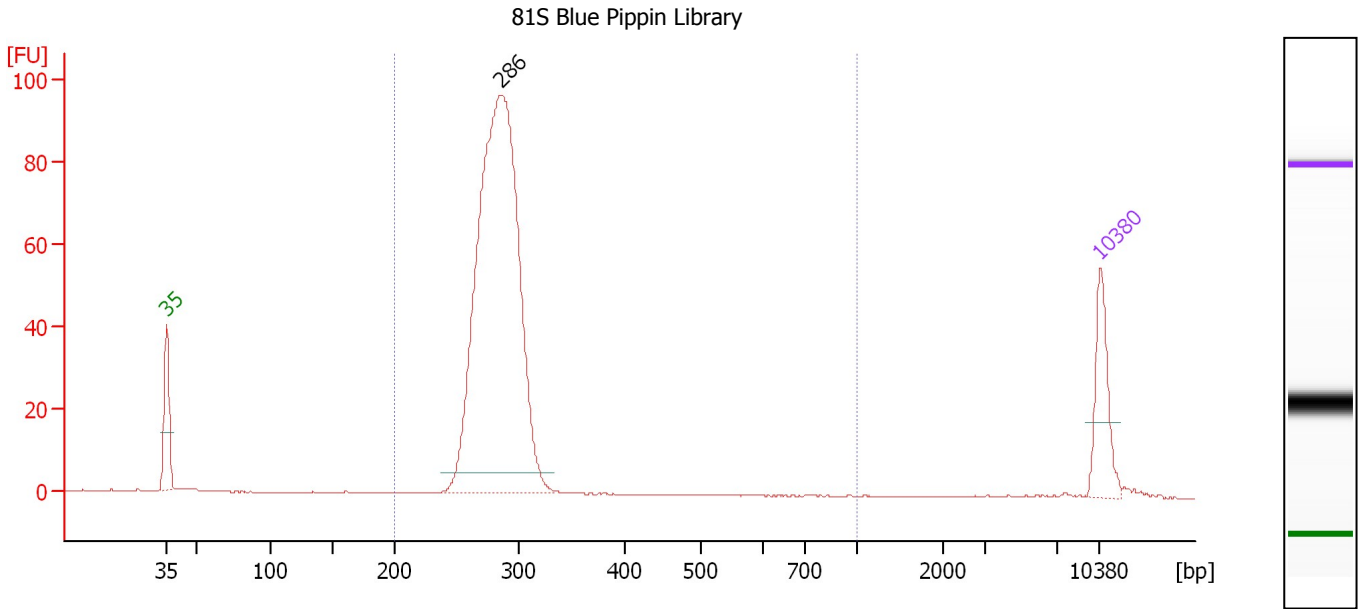
Region table for sample 9 : 107MI Blue Pippin Library

From [bp]	Average Size [bp]	To [bp]	Corr. Area	Molarity [pmol/l]	% of Total	Size distribution in CV [%]	Conc. [pg/μl]	Color
200	286	1,000	715.7	8,090.8	99	5.3	1,522.87	Blue

Assay Class: High Sensitivity DNA Assay
 Data Path: C:\...ents and Settings\Bioanalyzer\2015-05-21\2015-05-21_001.xad

Created: 5/21/2015 8:42:25 AM
 Modified: 5/21/2015 9:23:46 AM

Electropherogram Summary Continued ...



Overall Results for sample 10 : 81S Blue Pippin Library

Number of peaks found: 1 Corr. Area 1: 543.1
 Noise: 0.1

Peak table for sample 10 : 81S Blue Pippin Library

Peak	Size [bp]	Conc. [pg/μl]	Molarity [pmol/l]	Observations	Aligned Migration Time [s]
1	35	125.00	5,411.3	Lower Marker	43.00
2	286	1,209.57	6,419.0		68.03
3	10,380	75.00	10.9	Upper Marker	113.00

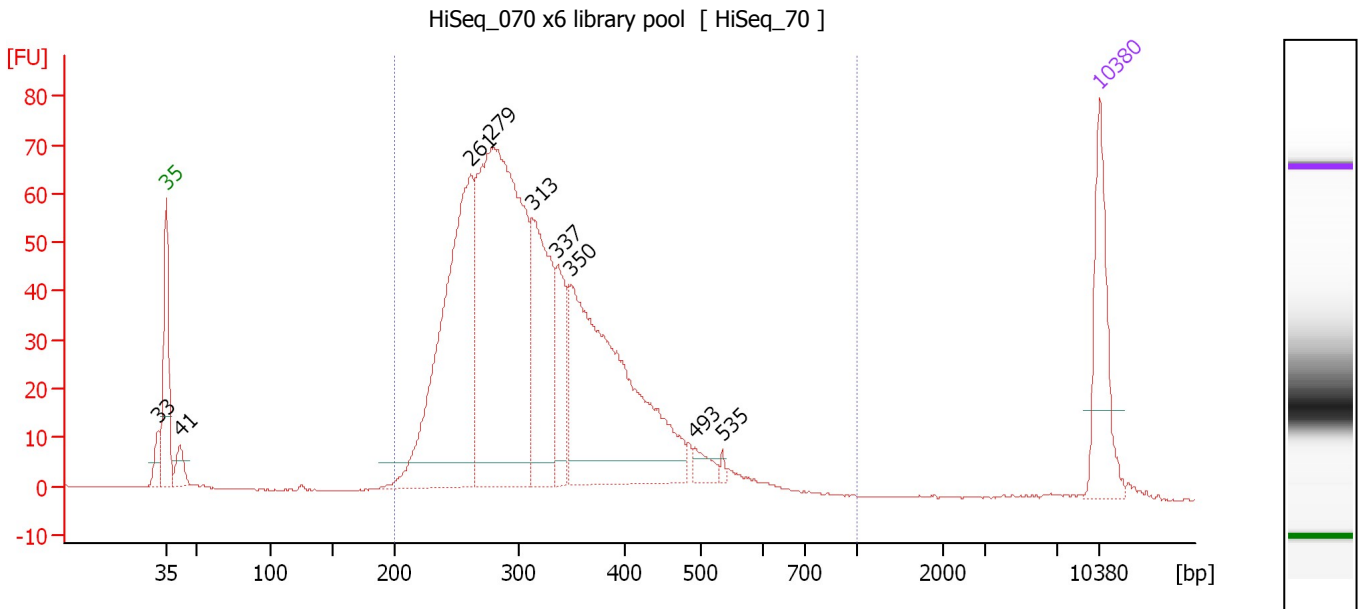
Region table for sample 10 : 81S Blue Pippin Library

From [bp]	Average Size [bp]	To [bp]	Corr. Area	Molarity [pmol/l]	% of Total	Size distribution in CV [%]	Conc. [pg/μl]	Color
200	285	1,000	543.1	6,581.5	97	10.1	1,232.90	Blue

Assay Class: High Sensitivity DNA Assay
 Data Path: C:\...ents and Settings\Bioanalyzer\2015-05-21\2015-05-21_001.xad

Created: 5/21/2015 8:42:25 AM
 Modified: 5/21/2015 9:23:46 AM

Electropherogram Summary Continued ...



Overall Results for sample 11 : HiSeq_070 x6 library pool

Number of peaks found: 9 Corr. Area 1: 1,235.8
 Noise: 0.1

Peak table for sample 11 : HiSeq_070 x6 library pool

Peak	Size [bp]	Conc. [pg/μl]	Molarity [pmol/l]	Observations	Aligned Migration Time [s]
1	33	0.00	0.0		42.35
2	35	125.00	5,411.3	Lower Marker	43.00
3	41	26.05	951.6		44.00
4	261	417.16	2,419.8		65.80
5	279	620.38	3,374.2		67.40
6	313	188.35	910.7		70.43
7	337	77.23	347.3		72.32
8	350	403.03	1,744.7		73.37
9	493	16.17	49.7		82.63
10	535	4.48	12.7		84.67
11	10,380	75.00	10.9	Upper Marker	113.00

Region table for sample 11 : HiSeq_070 x6 library pool

From [bp]	Average Size [bp]	To [bp]	Corr. Area	Molarity [pmol/l]	% of Total	Size distribution in CV [%]	Conc. [pg/μl]	Color
200	325	1,000	1,235.8	8,964.5	97	23.8	1,803.91	Blue

Assay Class: High Sensitivity DNA Assay
Data Path: C:\...ents and Settings\Bioanalyzer\2015-05-21\2015-05-21_001.xad

Created: 5/21/2015 8:42:25 AM
Modified: 5/21/2015 9:23:46 AM

Gel Image

