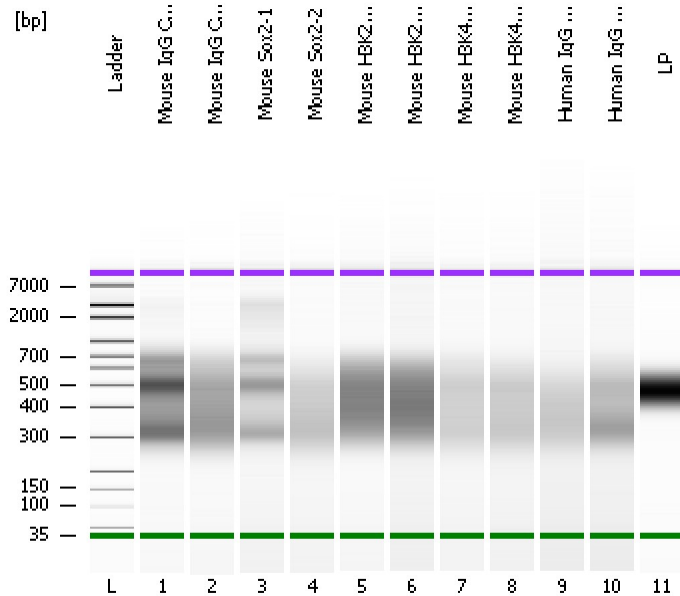


Assay Class: High Sensitivity DNA Assay
Data Path: C:\...ents and Settings\Bioanalyzer\2015-05-21\2015-05-21_002.xad

Created: 5/21/2015 9:56:15 AM
Modified: 5/21/2015 10:37:45 AM

Electrophoresis File Run Summary



Instrument Information:

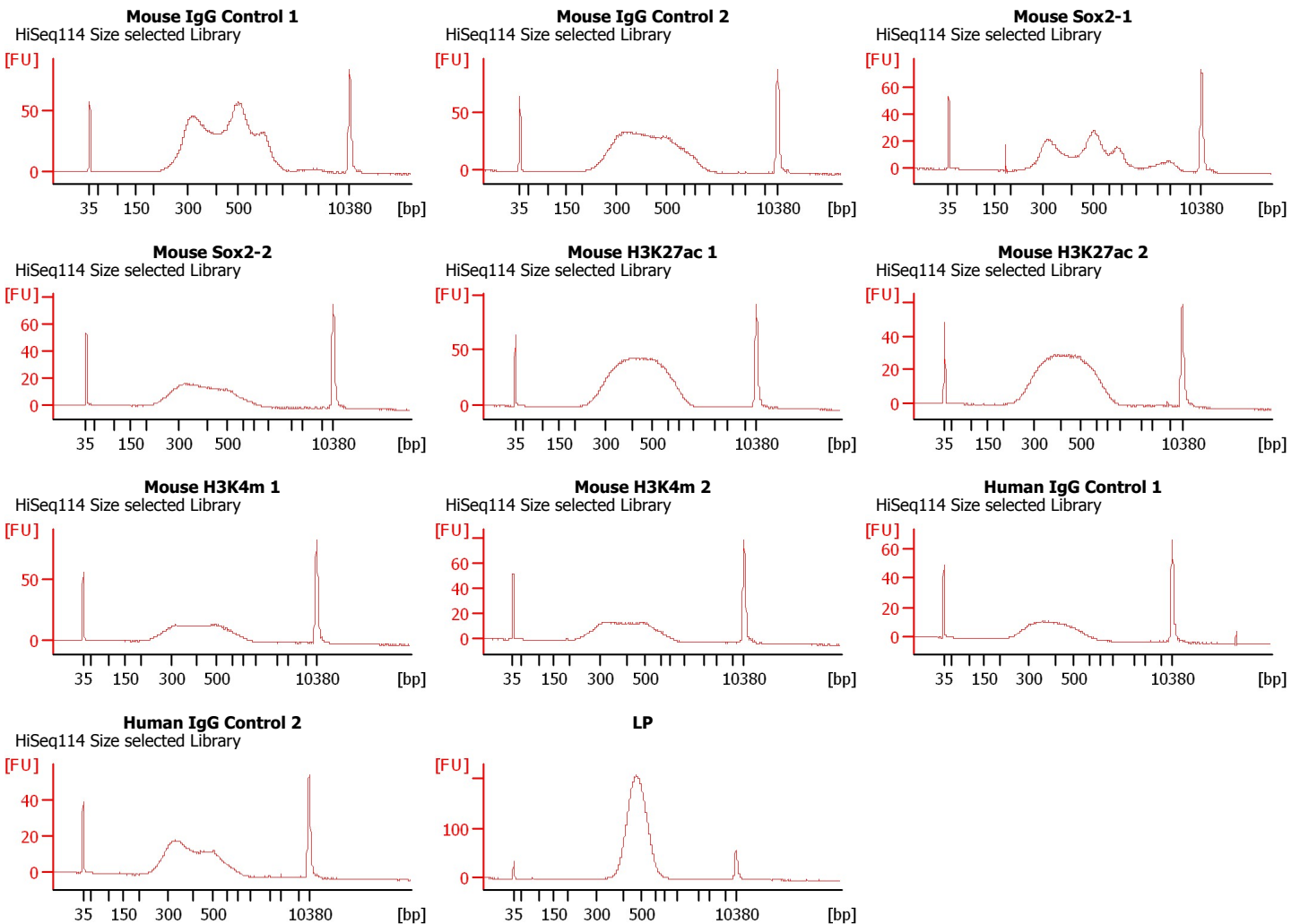
Instrument Name: DE13701086 Firmware: C.01.069
Serial#: DE13701086 Type: G2938B

Assay Information:

Assay Origin Path: C:\Program Files\Agilent\2100 bioanalyzer\2100 expert\assays\dsDNA\High Sensitivity DNA.xsy
Assay Class: High Sensitivity DNA Assay
Version: 1.03
Assay Comments: Copyright © 2003-2010 Agilent Technologies

Chip Information:

Chip Lot #:
Reagent Kit Lot #:
Chip Comments:



Assay Class: High Sensitivity DNA Assay
 Data Path: C:\...ents and Settings\Bioanalyzer\2015-05-21\2015-05-21_002.xad

Created: 5/21/2015 9:56:15 AM
 Modified: 5/21/2015 10:37:45 AM

Electrophoresis File Run Summary (Chip Summary)

Sample Name	Sample Comment	Rest. Digest	Status	Observation	Result Label	Result Color
Mouse IgG Control 1	HiSeq114 Size selected Library	<input type="checkbox"/>	✓			
Mouse IgG Control 2	HiSeq114 Size selected Library	<input type="checkbox"/>	✓			
Mouse Sox2-1	HiSeq114 Size selected Library	<input type="checkbox"/>	✓			
Mouse Sox2-2	HiSeq114 Size selected Library	<input type="checkbox"/>	✓			
Mouse H3K27ac 1	HiSeq114 Size selected Library	<input type="checkbox"/>	✓			
Mouse H3K27ac 2	HiSeq114 Size selected Library	<input type="checkbox"/>	✓			
Mouse H3K4m 1	HiSeq114 Size selected Library	<input type="checkbox"/>	✓			
Mouse H3K4m 2	HiSeq114 Size selected Library	<input type="checkbox"/>	✓			
Human IgG Control 1	HiSeq114 Size selected Library	<input type="checkbox"/>	✓			
Human IgG Control 2	HiSeq114 Size selected Library	<input type="checkbox"/>	✓			
LP		<input type="checkbox"/>	✓			
Ladder		<input type="checkbox"/>	✓			

Chip Lot #

Reagent Kit Lot #

Chip Comments :

Assay Class: High Sensitivity DNA Assay
Data Path: C:\...ents and Settings\Bioanalyzer\2015-05-21\2015-05-21_002.xad

Created: 5/21/2015 9:56:15 AM
Modified: 5/21/2015 10:37:45 AM

Electrophoresis Assay Details

General Analysis Settings

Number of Available Sample and Ladder Wells (Max.) : 12
Minimum Visible Range [s] : 32
Maximum Visible Range [s] : 138
Start Analysis Time Range [s] : 33
End Analysis Time Range [s] : 137.5
Ladder Concentration [pg/μl] : 1950
Uses Standard Area for Ladder Fragments
Lower Marker Concentration [pg/μl] : 125
Upper Marker Concentration [pg/μl] : 75
Used Upper Marker for Quantitation
Standard Curve Fit is Point to Point
Show Data Aligned to Lower and Upper Marker

Integrator Settings

Integration Start Time [s] : 33.05
Integration End Time [s] : 137
Slope Threshold : 0.8
Height Threshold [FU] : 5
Area Threshold : 0.1
Width Threshold [s] : 0.6
Baseline Plateau [s] : 0.5

Filter Settings

Filter Width [s] : 0.5
Polynomial Order : 4

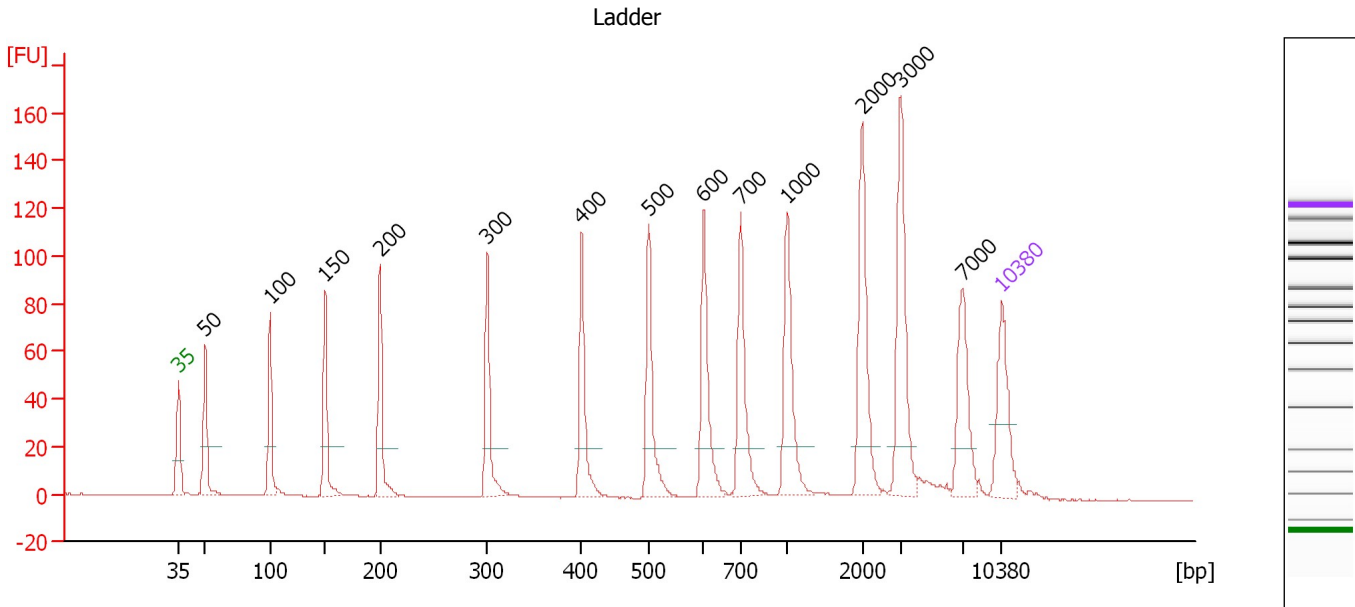
Ladder

Ladder Peak	Size	Area
1	35	160
2	50	210
3	100	208
4	150	221
5	200	242
6	300	270
7	400	305
8	500	306
9	600	336
10	700	321
11	1000	366
12	2000	413
13	3000	411
14	7000	400
15	10380	214

Assay Class: High Sensitivity DNA Assay
 Data Path: C:\...ents and Settings\Bioanalyzer\2015-05-21\2015-05-21_002.xad

Created: 5/21/2015 9:56:15 AM
 Modified: 5/21/2015 10:37:45 AM

Electropherogram Summary



Overall Results for Ladder

Noise: 0.2

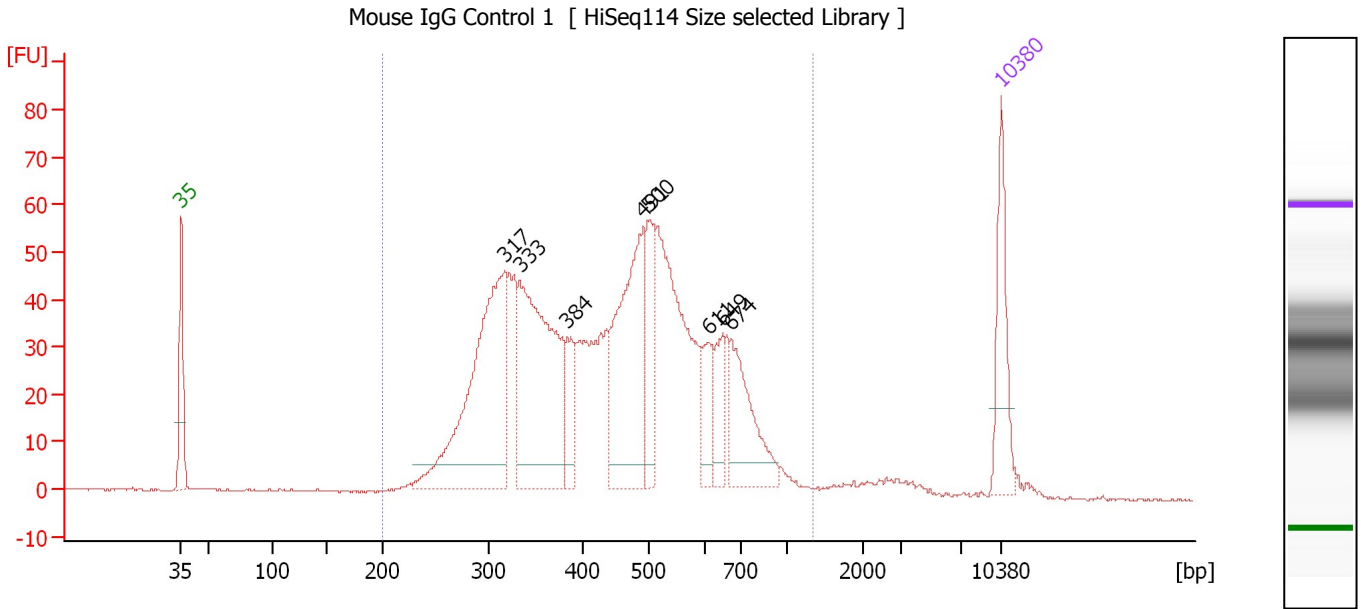
Peak table for Ladder

Peak	Size [bp]	Conc. [pg/μl]	Molarity [pmol/l]	Observations	Aligned Migration Time [s]
1	35	125.00	5,411.3	Lower Marker	43.00
2	50	150.00	4,545.5	Ladder Peak	45.27
3	100	150.00	2,272.7	Ladder Peak	50.80
4	150	150.00	1,515.2	Ladder Peak	55.48
5	200	150.00	1,136.4	Ladder Peak	60.15
6	300	150.00	757.6	Ladder Peak	69.27
7	400	150.00	568.2	Ladder Peak	77.30
8	500	150.00	454.5	Ladder Peak	83.01
9	600	150.00	378.8	Ladder Peak	87.69
10	700	150.00	324.7	Ladder Peak	90.82
11	1,000	150.00	227.3	Ladder Peak	94.76
12	2,000	150.00	113.6	Ladder Peak	101.16
13	3,000	150.00	75.8	Ladder Peak	104.47
14	7,000	150.00	32.5	Ladder Peak	109.69
15	10,380	75.00	10.9	Upper Marker	113.00

Assay Class: High Sensitivity DNA Assay
 Data Path: C:\...ents and Settings\Bioanalyzer\2015-05-21\2015-05-21_002.xad

Created: 5/21/2015 9:56:15 AM
 Modified: 5/21/2015 10:37:45 AM

Electropherogram Summary Continued ...



Overall Results for sample 1 : Mouse IgG Control 1

Number of peaks found: 8 Corr. Area 1: 1,343.7
 Noise: 0.2

Peak table for sample 1 : Mouse IgG Control 1

Peak	Size [bp]	Conc. [pg/μl]	Molarity [pmol/l]	Observations	Aligned Migration Time [s]
1	35	125.00	5,411.3	Lower Marker	43.00
2	317	412.42	1,973.8		70.60
3	333	367.54	1,672.1		71.92
4	384	56.13	221.4		76.02
5	491	256.16	790.8		82.49
6	500	94.06	285.3		82.99
7	611	55.37	137.2		88.04
8	649	44.91	104.8		89.23
9	674	115.33	259.3		90.00
10	10,380	75.00	10.9	Upper Marker	113.00

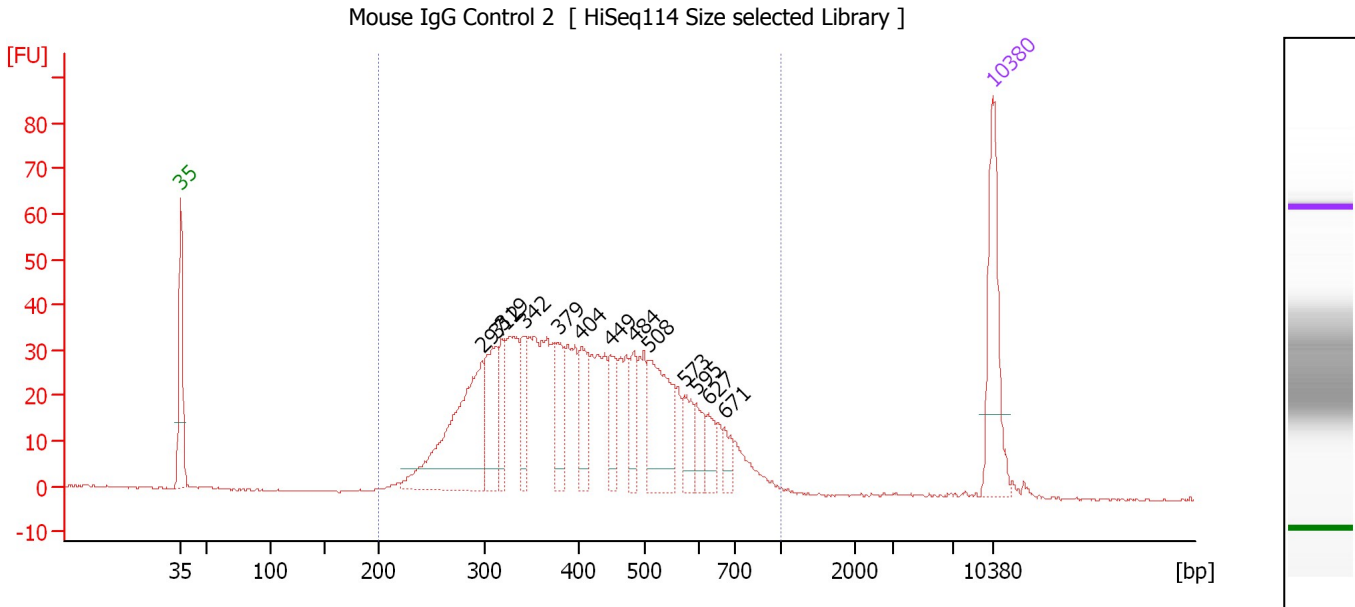
Region table for sample 1 : Mouse IgG Control 1

From [bp]	Average Size [bp]	To [bp]	Corr. Area	Molarity [pmol/l]	% of Total	Size distribution in CV [%]	Conc. [pg/μl]	Color
200	463	1,339	1,343.7	7,981.1	96	32.2	2,133.66	Blue

Assay Class: High Sensitivity DNA Assay
 Data Path: C:\...ents and Settings\Bioanalyzer\2015-05-21\2015-05-21_002.xad

Created: 5/21/2015 9:56:15 AM
 Modified: 5/21/2015 10:37:45 AM

Electropherogram Summary Continued ...



Overall Results for sample 2 : Mouse IgG Control 2

Number of peaks found: 13 Corr. Area 1: 979.3
 Noise: 0.2

Peak table for sample 2 : Mouse IgG Control 2

Peak	Size [bp]	Conc. [pg/μl]	Molarity [pmol/l]	Observations	Aligned Migration Time [s]
1	35	125.00	5,411.3	Lower Marker	43.00
2	297	206.45	1,053.5		68.99
3	312	81.34	395.1		70.23
4	319	41.29	196.2		70.78
5	342	40.39	179.1		72.62
6	379	48.80	195.1		75.61
7	404	47.18	176.8		77.54
8	449	38.91	131.5		80.07
9	484	31.44	98.4		82.09
10	508	98.22	293.0		83.38
11	573	28.43	75.2		86.42
12	595	25.78	65.6		87.47
13	627	20.95	50.6		88.53
14	671	16.43	37.1		89.91
15	10,380	75.00	10.9	Upper Marker	113.00

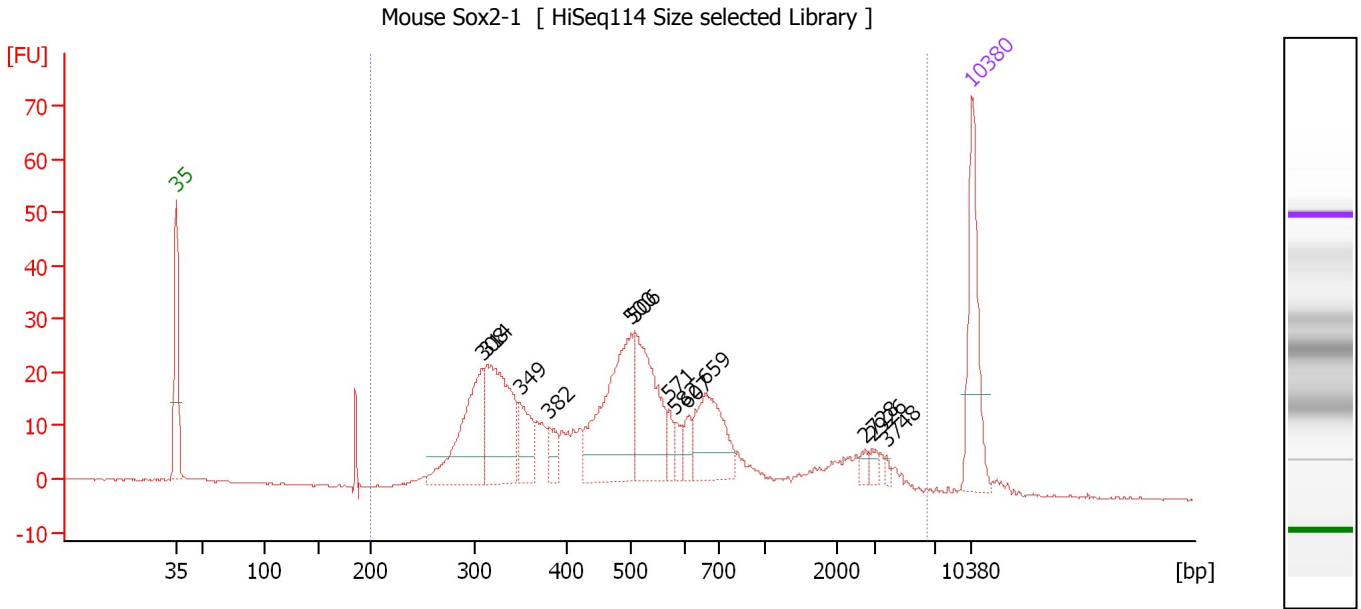
Region table for sample 2 : Mouse IgG Control 2

From [bp]	Average Size [bp]	To [bp]	Corr. Area	Molarity [pmol/l]	% of Total	Size distribution in CV [%]	Conc. [pg/μl]	Color
200	428	1,000	979.3	5,173.1	99	29.8	1,302.51	Blue

Assay Class: High Sensitivity DNA Assay
 Data Path: C:\...ents and Settings\Bioanalyzer\2015-05-21\2015-05-21_002.xad

Created: 5/21/2015 9:56:15 AM
 Modified: 5/21/2015 10:37:45 AM

Electropherogram Summary Continued ...



Overall Results for sample 3 : Mouse Sox2-1

Number of peaks found: 13 Corr. Area 1: 633.0
 Noise: 0.2

Peak table for sample 3 : Mouse Sox2-1

Peak	Size [bp]	Conc. [pg/μl]	Molarity [pmol/l]	Observations	Aligned Migration Time [s]
1	35	125.00	5,411.3	Lower Marker	43.00
2	308	133.34	656.6		69.88
3	314	152.64	737.7		70.35
4	349	46.05	199.8		73.21
5	382	20.87	82.8		75.84
6	500	164.83	499.3		83.02
7	506	122.54	366.8		83.30
8	571	13.55	35.9		86.35
9	582	13.30	34.6		86.87
10	607	15.02	37.5		87.90
11	659	81.32	186.9		89.54
12	2,728	5.95	3.3		103.57
13	2,926	6.59	3.4		104.23
14	3,748	3.26	1.3		105.45
15	10,380	75.00	10.9	Upper Marker	113.00

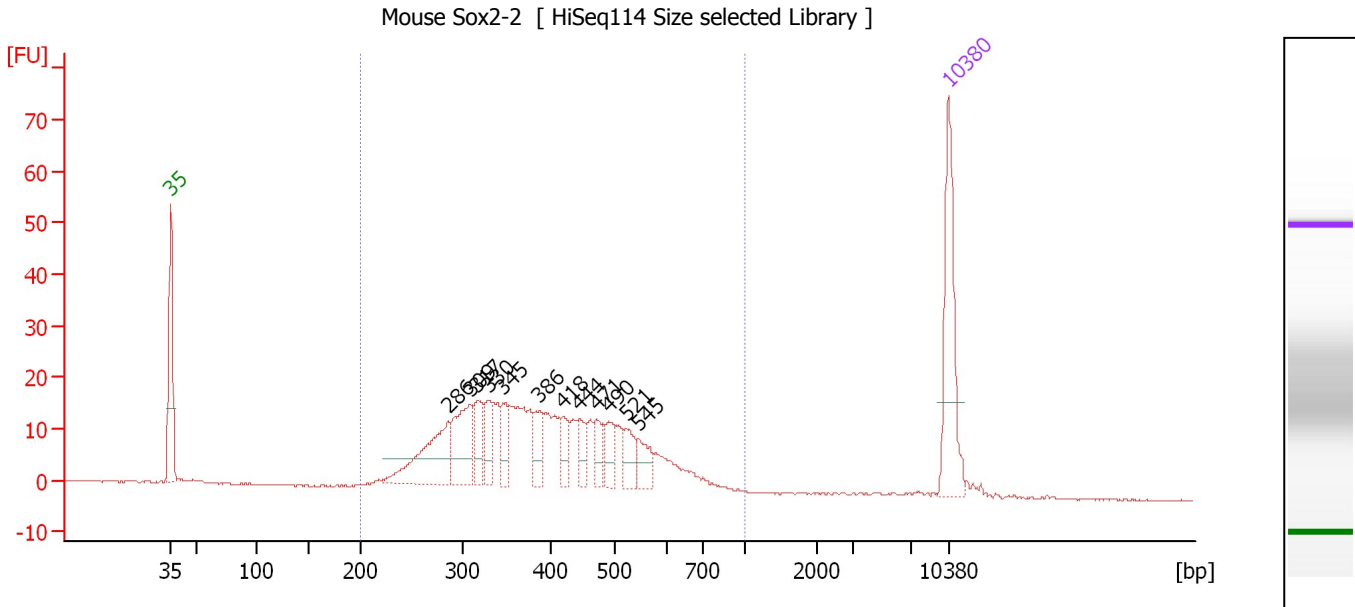
Region table for sample 3 : Mouse Sox2-1

From [bp]	Average Size [bp]	To [bp]	Corr. Area	Molarity [pmol/l]	% of Total	Size distribution in CV [%]	Conc. [pg/μl]	Color
200	750	6,555	633.0	3,485.4	97	100.0	1,016.42	Blue

Assay Class: High Sensitivity DNA Assay
 Data Path: C:\...ents and Settings\Bioanalyzer\2015-05-21\2015-05-21_002.xad

Created: 5/21/2015 9:56:15 AM
 Modified: 5/21/2015 10:37:45 AM

Electropherogram Summary Continued ...



Overall Results for sample 4 : Mouse Sox2-2

Number of peaks found: 12 Corr. Area 1: 434.9
 Noise: 0.1

Peak table for sample 4 : Mouse Sox2-2

Peak	Size [bp]	Conc. [pg/μl]	Molarity [pmol/l]	Observations	Aligned Migration Time [s]
1	35	125.00	5,411.3	Lower Marker	43.00
2	286	92.91	493.0		67.95
3	309	69.77	342.5		69.96
4	317	30.49	145.7		70.64
5	330	26.19	120.4		71.64
6	345	27.92	122.6		72.89
7	386	26.23	102.9		76.20
8	418	23.03	83.5		78.31
9	444	19.31	65.9		79.80
10	471	18.82	60.6		81.33
11	490	21.60	66.8		82.44
12	521	22.59	65.8		83.97
13	545	20.39	56.7		85.12
14	10,380	75.00	10.9	Upper Marker	113.00

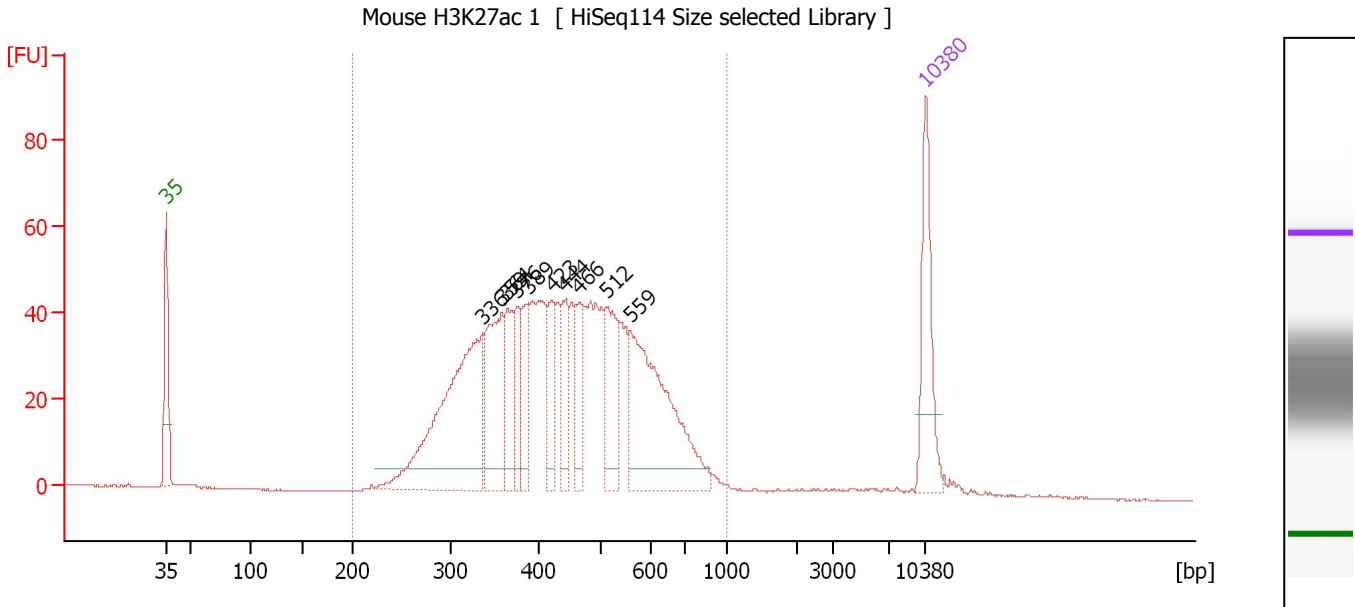
Region table for sample 4 : Mouse Sox2-2

From [bp]	Average Size [bp]	To [bp]	Corr. Area	Molarity [pmol/l]	% of Total	Size distribution in CV [%]	Conc. [pg/μl]	Color
200	405	1,000	434.9	2,855.8	98	27.7	690.87	Blue

Assay Class: High Sensitivity DNA Assay
 Data Path: C:\...ents and Settings\Bioanalyzer\2015-05-21\2015-05-21_002.xad

Created: 5/21/2015 9:56:15 AM
 Modified: 5/21/2015 10:37:45 AM

Electropherogram Summary Continued ...



Overall Results for sample 5 : Mouse H3K27ac 1

Number of peaks found: 10 Corr. Area 1: 1,166.9
 Noise: 0.1

Peak table for sample 5 : Mouse H3K27ac 1

Peak	Size [bp]	Conc. [pg/μl]	Molarity [pmol/l]	Observations	Aligned Migration Time [s]
1	35	125.00	5,411.3	Lower Marker	43.00
2	336	312.86	1,411.2		72.15
3	359	132.93	561.7		73.97
4	364	64.58	268.7		74.41
5	376	52.40	211.0		75.39
6	389	55.67	217.1		76.38
7	423	54.10	194.0		78.59
8	444	56.81	193.8		79.82
9	466	48.44	157.3		81.10
10	512	88.05	260.8		83.55
11	559	228.90	620.5		85.77
12	10,380	75.00	10.9	Upper Marker	113.00

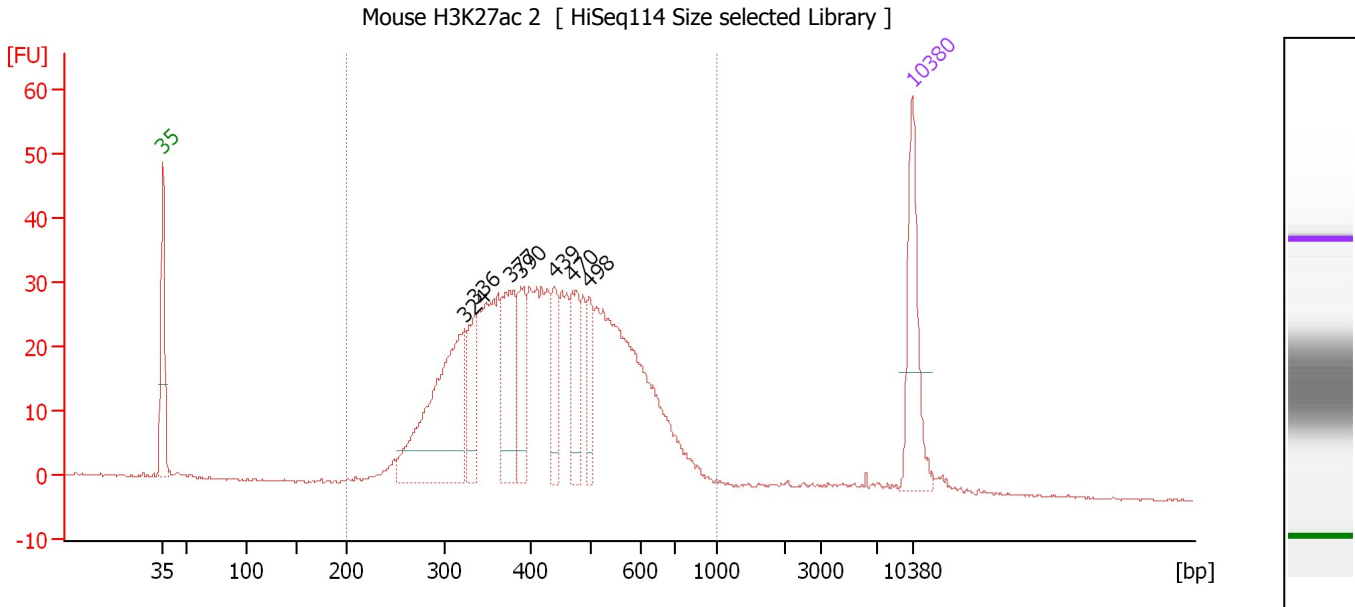
Region table for sample 5 : Mouse H3K27ac 1

From [bp]	Average Size [bp]	To [bp]	Corr. Area	Molarity [pmol/l]	% of Total	Size distribution in CV [%]	Conc. [pg/μl]	Color
200	450	1,000	1,166.9	5,670.6	97	27.1	1,527.45	Blue

Assay Class: High Sensitivity DNA Assay
 Data Path: C:\...ents and Settings\Bioanalyzer\2015-05-21\2015-05-21_002.xad

Created: 5/21/2015 9:56:15 AM
 Modified: 5/21/2015 10:37:45 AM

Electropherogram Summary Continued ...



Overall Results for sample 6 : Mouse H3K27ac 2

Number of peaks found: 7 Corr. Area 1: 791.3
 Noise: 0.1

Peak table for sample 6 : Mouse H3K27ac 2

Peak	Size [bp]	Conc. [pg/μl]	Molarity [pmol/l]	Observations	Aligned Migration Time [s]
1	35	125.00	5,411.3	Lower Marker	43.00
2	324	239.14	1,119.0		71.18
3	336	60.01	270.5		72.17
4	377	99.65	400.3		75.46
5	390	67.07	260.9		76.46
6	439	50.17	173.0		79.54
7	470	60.89	196.4		81.29
8	498	39.39	119.9		82.88
9	10,380	75.00	10.9	Upper Marker	113.00

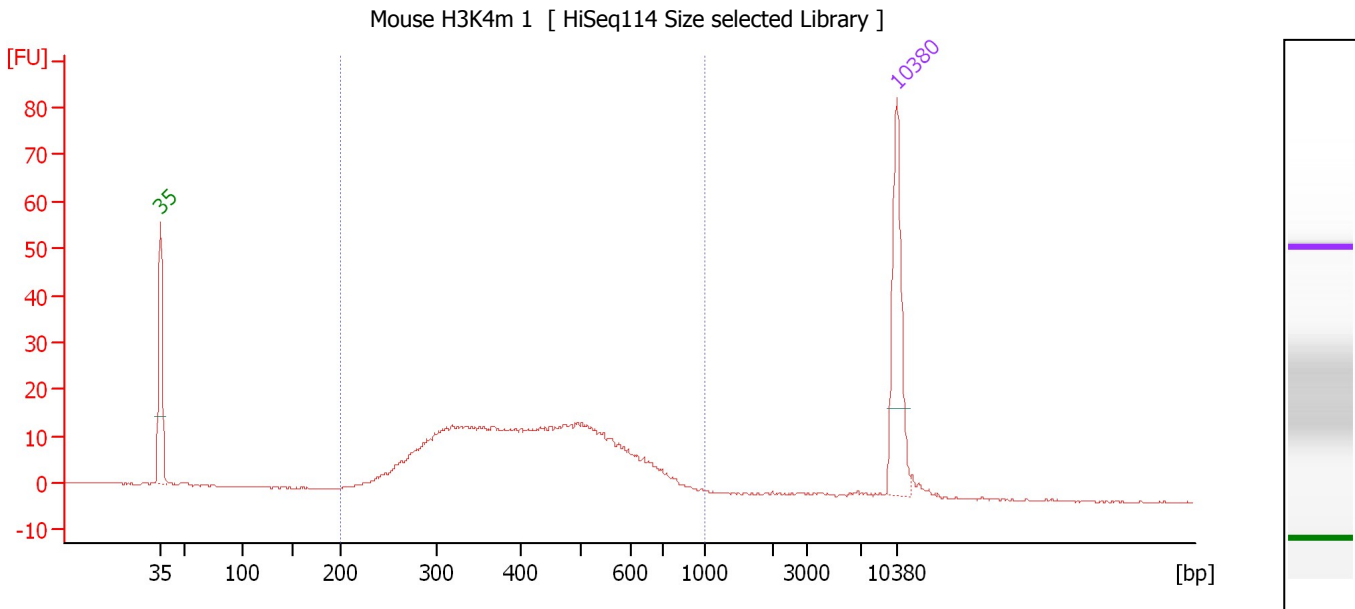
Region table for sample 6 : Mouse H3K27ac 2

From [bp]	Average Size [bp]	To [bp]	Corr. Area	Molarity [pmol/l]	% of Total	Size distribution in CV [%]	Conc. [pg/μl]	Color
200	443	1,000	791.3	5,292.8	97	26.8	1,405.12	Blue

Assay Class: High Sensitivity DNA Assay
 Data Path: C:\...ents and Settings\Bioanalyzer\2015-05-21\2015-05-21_002.xad

Created: 5/21/2015 9:56:15 AM
 Modified: 5/21/2015 10:37:45 AM

Electropherogram Summary Continued ...



Overall Results for sample 7 : Mouse H3K4m 1

Number of peaks found: 0 Corr. Area 1: 398.0
 Noise: 0.1

Peak table for sample 7 : Mouse H3K4m 1

Peak	Size [bp]	Conc. [pg/μl]	Molarity [pmol/l]	Observations	Aligned Migration Time [s]
1	35	125.00	5,411.3	Lower Marker	43.00
2	10,380	75.00	10.9	Upper Marker	113.00

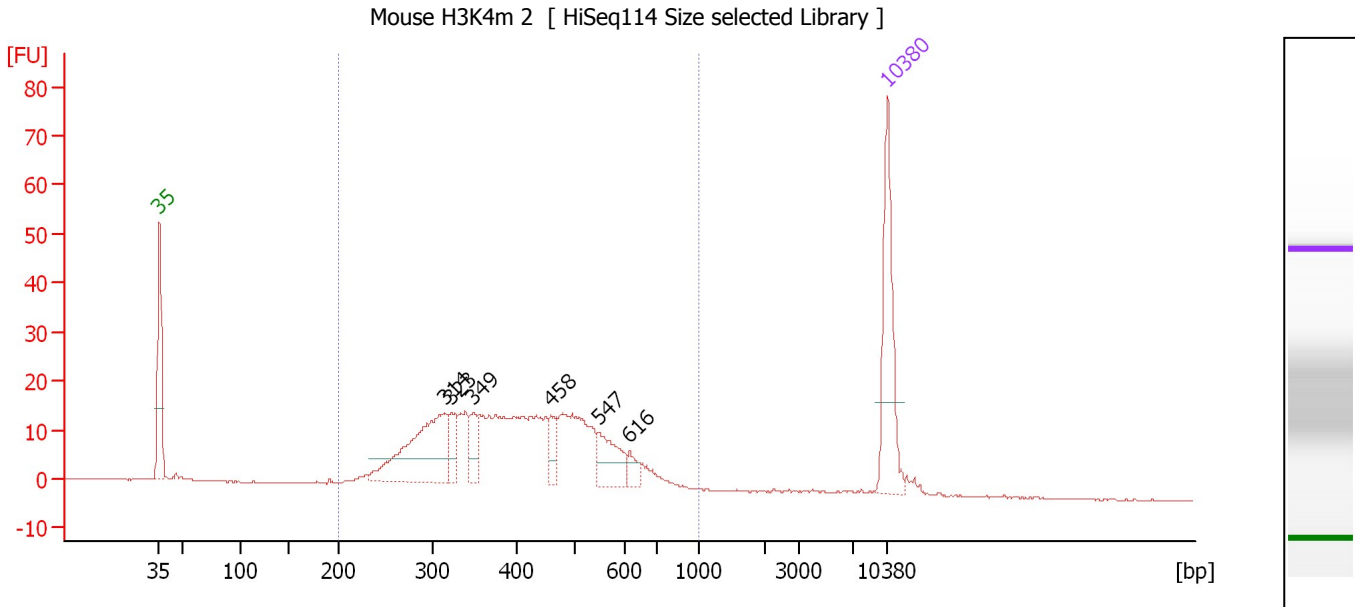
Region table for sample 7 : Mouse H3K4m 1

From [bp]	Average Size [bp]	To [bp]	Corr. Area	Molarity [pmol/l]	% of Total	Size distribution in CV [%]	Conc. [pg/μl]	Color
200	432	1,000	398.0	2,228.3	98	28.7	567.98	Blue

Assay Class: High Sensitivity DNA Assay
 Data Path: C:\...ents and Settings\Bioanalyzer\2015-05-21\2015-05-21_002.xad

Created: 5/21/2015 9:56:15 AM
 Modified: 5/21/2015 10:37:45 AM

Electropherogram Summary Continued ...



Overall Results for sample 8 : Mouse H3K4m 2

Number of peaks found: 6 Corr. Area 1: 422.9
 Noise: 0.2

Peak table for sample 8 : Mouse H3K4m 2

Peak	Size [bp]	Conc. [pg/μl]	Molarity [pmol/l]	Observations	Aligned Migration Time [s]
1	35	125.00	5,411.3	Lower Marker	43.00
2	314	141.19	682.0		70.36
3	323	21.32	100.1		71.08
4	349	27.67	120.2		73.18
5	458	18.06	59.7		80.61
6	547	40.87	113.1		85.23
7	616	11.27	27.7		88.20
8	10,380	75.00	10.9	Upper Marker	113.00

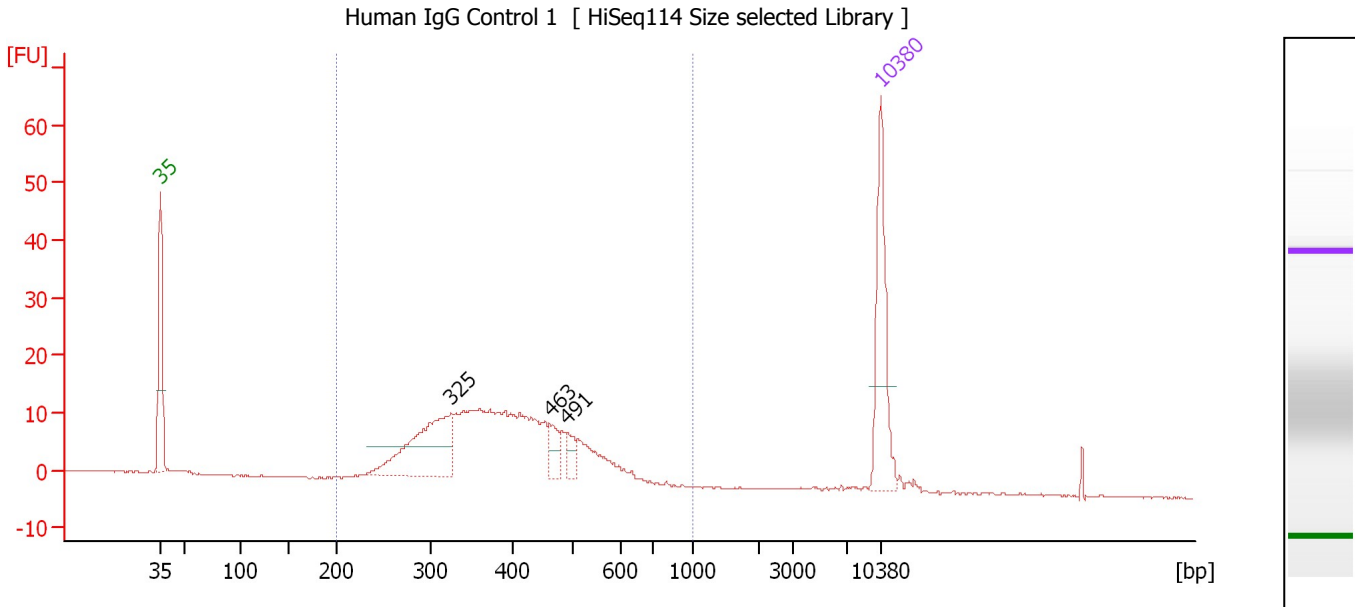
Region table for sample 8 : Mouse H3K4m 2

From [bp]	Average Size [bp]	To [bp]	Corr. Area	Molarity [pmol/l]	% of Total	Size distribution in CV [%]	Conc. [pg/μl]	Color
200	419	1,000	422.9	2,554.1	96	27.7	635.17	Blue

Assay Class: High Sensitivity DNA Assay
 Data Path: C:\...ents and Settings\Bioanalyzer\2015-05-21\2015-05-21_002.xad

Created: 5/21/2015 9:56:15 AM
 Modified: 5/21/2015 10:37:45 AM

Electropherogram Summary Continued ...



Overall Results for sample 9 : Human IgG Control 1

Number of peaks found: 3 Corr. Area 1: 280.1
 Noise: 0.1

Peak table for sample 9 : Human IgG Control 1

Peak	Size [bp]	Conc. [pg/μl]	Molarity [pmol/l]	Observations	Aligned Migration Time [s]
1	35	125.00	5,411.3	Lower Marker	43.00
2	325	130.50	609.3		71.24
3	463	18.99	62.2		80.88
4	491	15.74	48.6		82.48
5	10,380	75.00	10.9	Upper Marker	113.00

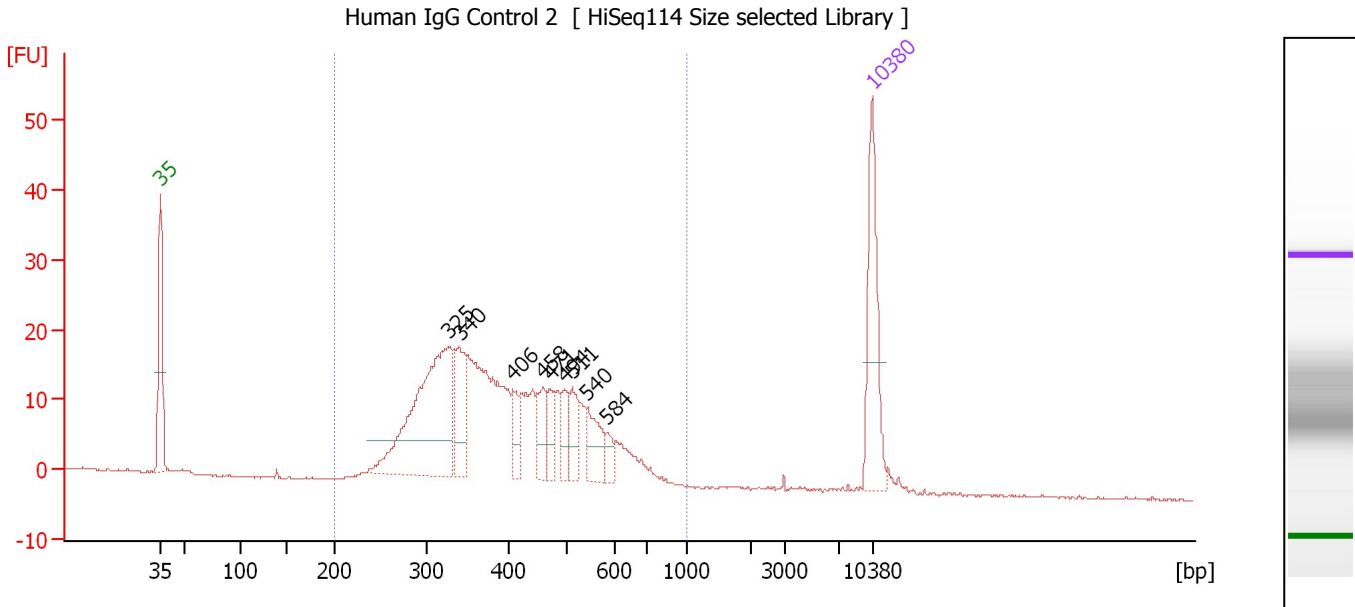
Region table for sample 9 : Human IgG Control 1

From [bp]	Average Size [bp]	To [bp]	Corr. Area	Molarity [pmol/l]	% of Total	Size distribution in CV [%]	Conc. [pg/μl]	Color
200	396	1,000	280.1	2,095.8	97	23.1	509.30	Blue

Assay Class: High Sensitivity DNA Assay
 Data Path: C:\...ents and Settings\Bioanalyzer\2015-05-21\2015-05-21_002.xad

Created: 5/21/2015 9:56:15 AM
 Modified: 5/21/2015 10:37:45 AM

Electropherogram Summary Continued ...



Overall Results for sample 10 : Human IgG Control 2

Number of peaks found: 9 Corr. Area 1: 405.3
 Noise: 0.1

Peak table for sample 10 : Human IgG Control 2

Peak	Size [bp]	Conc. [pg/μl]	Molarity [pmol/l]	Observations	Aligned Migration Time [s]
1	35	125.00	5,411.3	Lower Marker	43.00
2	325	247.77	1,155.7		71.26
3	340	65.65	292.7		72.47
4	406	23.77	88.6		77.66
5	458	30.23	100.1		80.60
6	471	26.73	86.1		81.33
7	494	26.30	80.6		82.69
8	511	29.79	88.3		83.53
9	540	38.01	106.6		84.90
10	584	12.63	32.8		86.94
11	10,380	75.00	10.9	Upper Marker	113.00

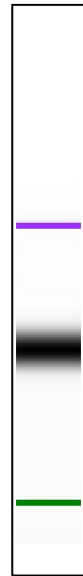
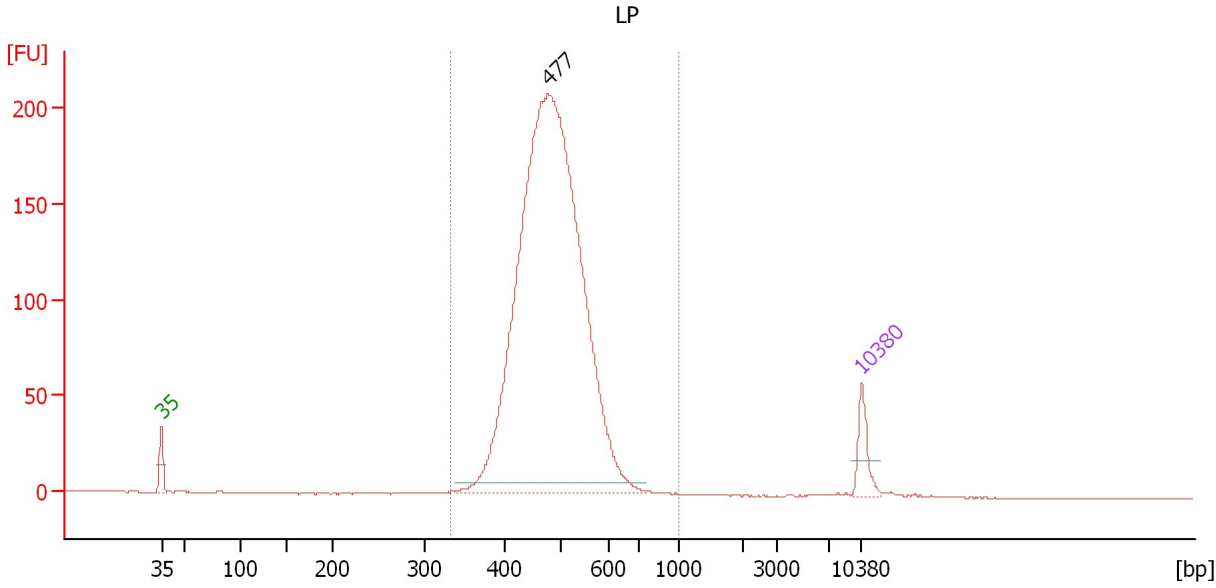
Region table for sample 10 : Human IgG Control 2

From [bp]	Average Size [bp]	To [bp]	Corr. Area	Molarity [pmol/l]	% of Total	Size distribution in CV [%]	Conc. [pg/μl]	Color
200	410	1,000	405.3	3,462.8	98	26.2	858.32	Blue

Assay Class: High Sensitivity DNA Assay
 Data Path: C:\...ents and Settings\Bioanalyzer\2015-05-21\2015-05-21_002.xad

Created: 5/21/2015 9:56:15 AM
 Modified: 5/21/2015 10:37:45 AM

Electropherogram Summary Continued ...



Overall Results for sample 11 : LP

Number of peaks found: 1 Corr. Area 1: 1,890.5
 Noise: 0.1

Peak table for sample 11 : LP

Peak	Size [bp]	Conc. [pg/μl]	Molarity [pmol/l]	Observations	Aligned Migration Time [s]
1	35	125.00	5,411.3	Lower Marker	43.00
2	477	3,583.69	11,380.4		81.71
3	10,380	75.00	10.9	Upper Marker	113.00

Region table for sample 11 : LP

From [bp]	Average Size [bp]	To [bp]	Corr. Area	Molarity [pmol/l]	% of Total	Size distribution in CV [%]	Conc. [pg/μl]	Color
334	485	1,000	1,890.5	11,392.8	99	12.1	3,589.40	Blue

Assay Class: High Sensitivity DNA Assay
Data Path: C:\...ents and Settings\Bioanalyzer\2015-05-21\2015-05-21_002.xad

Created: 5/21/2015 9:56:15 AM
Modified: 5/21/2015 10:37:45 AM

Gel Image

