

Assay Class: Eukaryote Total RNA Pico
Data Path: C:\...ents and Settings\Bioanalyzer\2015-05-27\2015-05-27_003.xad

Created: 5/27/2015 4:25:46 PM
Modified: 5/27/2015 4:35:48 PM

Electrophoresis File Run Summary

Instrument Information:

Instrument Name: DE13701086 Firmware: C.01.069
Serial#: DE13701086 Type: G2938B

Assay Information:

Assay Origin Path: C:\Program Files\Agilent\2100 bioanalyzer\2100 expert\assays\RNA\Eukaryote Total RNA Pico Series II.xsy

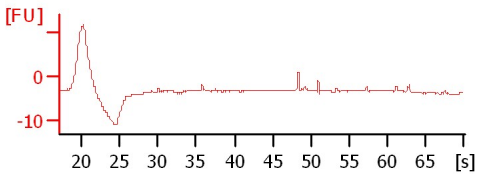
Assay Class: Eukaryote Total RNA Pico
Version: 2.6
Assay Comments: Total RNA Analysis pg sensitivity (Eukaryote)

© Copyright 2003 - 2009 Agilent Technologies, Inc.

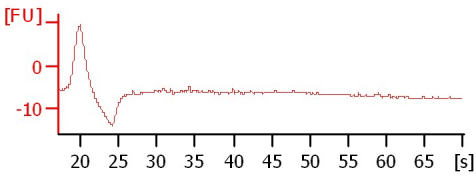
Chip Information:

Chip Lot #:
Reagent Kit Lot #:
Chip Comments:

Sample 1
RIN N/A



Sample 2
RIN N/A



Assay Class: Eukaryote Total RNA Pico
Data Path: C:\...ents and Settings\Bioanalyzer\2015-05-27\2015-05-27_003.xad

Created: 5/27/2015 4:25:46 PM
Modified: 5/27/2015 4:35:48 PM

Electrophoresis File Run Summary (Chip Summary)

Sample Name	Sample Comment	Status	Result Label	Result Color
Sample 1		✓	RIN N/A	
Sample 2		✓	RIN N/A	
Sample 3				
Sample 4				
Sample 5				
Sample 6				
Sample 7				
Sample 8				
Sample 9				
Sample 10				
Sample 11				
Ladder		✓	All Other Samples	

Chip Lot #

Reagent Kit Lot #

Chip Comments :

Assay Class: Eukaryote Total RNA Pico
Data Path: C:\...ents and Settings\Bioanalyzer\2015-05-27\2015-05-27_003.xad

Created: 5/27/2015 4:25:46 PM
Modified: 5/27/2015 4:35:48 PM

Electrophoresis Assay Details

General Analysis Settings

Number of Available Sample and Ladder Wells (Max.) : 12
Minimum Visible Range [s] : 17
Maximum Visible Range [s] : 70
Start Analysis Time Range [s] : 18
End Analysis Time Range [s] : 69
Ladder Concentration [pg/ μ l] : 1000
Lower Marker Concentration [pg/ μ l] : 0
Upper Marker Concentration [pg/ μ l] : 0
Used Lower Marker for Quantitation
Standard Curve Fit is Logarithmic
Show Data Aligned to Lower Marker

Integrator Settings

Integration Start Time [s] : 18
Integration End Time [s] : 69
Slope Threshold : 0.6
Height Threshold [FU] : 0.5
Area Threshold : 0.2
Width Threshold [s] : 0.3
Baseline Plateau [s] : 6

Filter Settings

Filter Width [s] : 0.5
Polynomial Order : 4

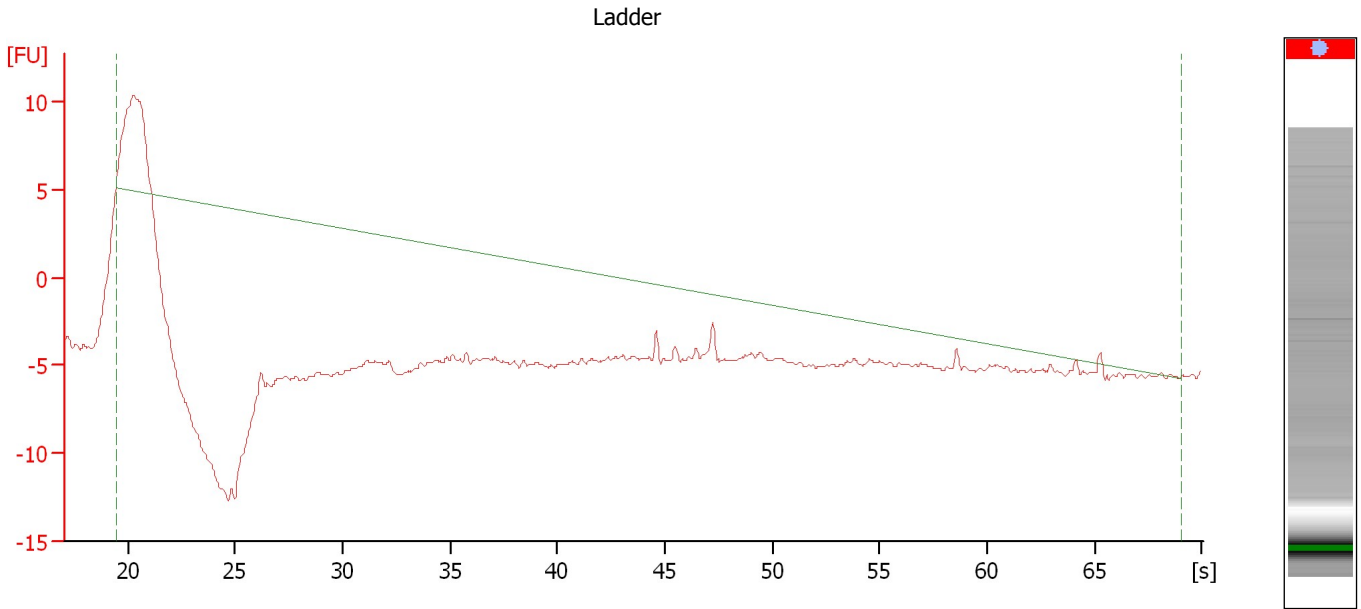
Ladder

Ladder Peak	Size
1	25
2	200
3	500
4	1000
5	2000
6	4000

Assay Class: Eukaryote Total RNA Pico
Data Path: C:\...ents and Settings\Bioanalyzer\2015-05-27\2015-05-27_003.xad

Created: 5/27/2015 4:25:46 PM
Modified: 5/27/2015 4:35:48 PM

Electropherogram Summary



Overall Results for Ladder

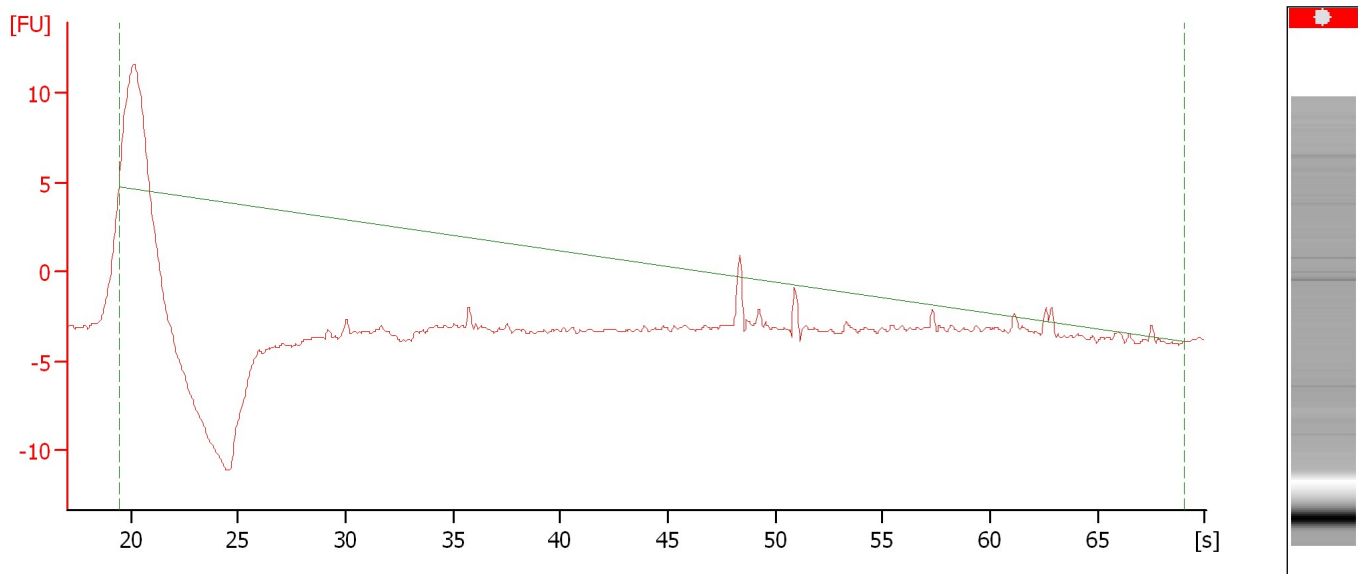
RNA Area:	-6.1	Result Flagging Color:	
RNA Concentration:	1,000 pg/μl	Result Flagging Label:	All Other Samples

Assay Class: Eukaryote Total RNA Pico
Data Path: C:\...ents and Settings\Bioanalyzer\2015-05-27\2015-05-27_003.xad

Created: 5/27/2015 4:25:46 PM
Modified: 5/27/2015 4:35:48 PM

Electropherogram Summary Continued ...

Sample 1



Overall Results for sample 1 : Sample 1

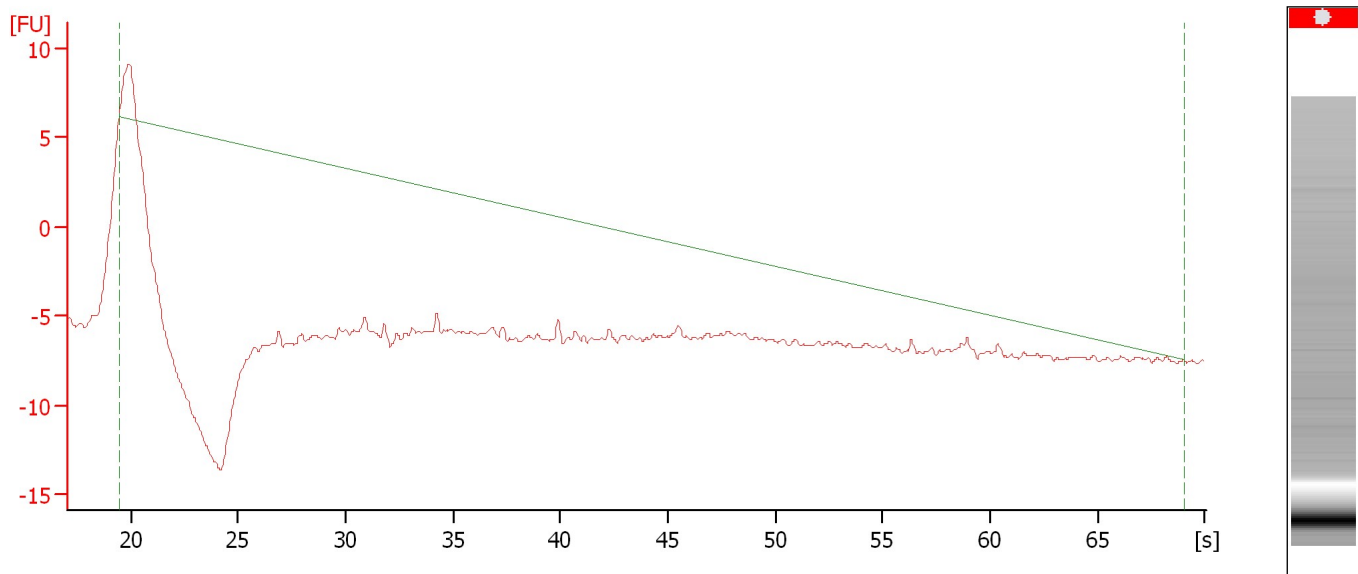
RNA Area: 0.0 Result Flagging Label: RIN N/A
Result Flagging Color:

Assay Class: Eukaryote Total RNA Pico
Data Path: C:\...ents and Settings\Bioanalyzer\2015-05-27\2015-05-27_003.xad

Created: 5/27/2015 4:25:46 PM
Modified: 5/27/2015 4:35:48 PM

Electropherogram Summary Continued ...

Sample 2



Overall Results for sample 2 : Sample 2

RNA Area: 0.0 Result Flagging Label: RIN N/A
Result Flagging Color:

Assay Class: Eukaryote Total RNA Pico
Data Path: C:\...ents and Settings\Bioanalyzer\2015-05-27\2015-05-27_003.xad

Created: 5/27/2015 4:25:46 PM
Modified: 5/27/2015 4:35:48 PM

Gel Image

Assay Class: Eukaryote Total RNA Pico
Data Path: C:\...ents and Settings\Bioanalyzer\2015-05-27\2015-05-27_003.xad

Created: 5/27/2015 4:25:46 PM
Modified: 5/27/2015 4:35:48 PM

Invalid Samples

Sample 3 has not been run, no results available.

Sample 4 has not been run, no results available.

Sample 5 has not been run, no results available.

Sample 6 has not been run, no results available.

Sample 7 has not been run, no results available.

Sample 8 has not been run, no results available.

Sample 9 has not been run, no results available.

Sample 10 has not been run, no results available.

Sample 11 has not been run, no results available.