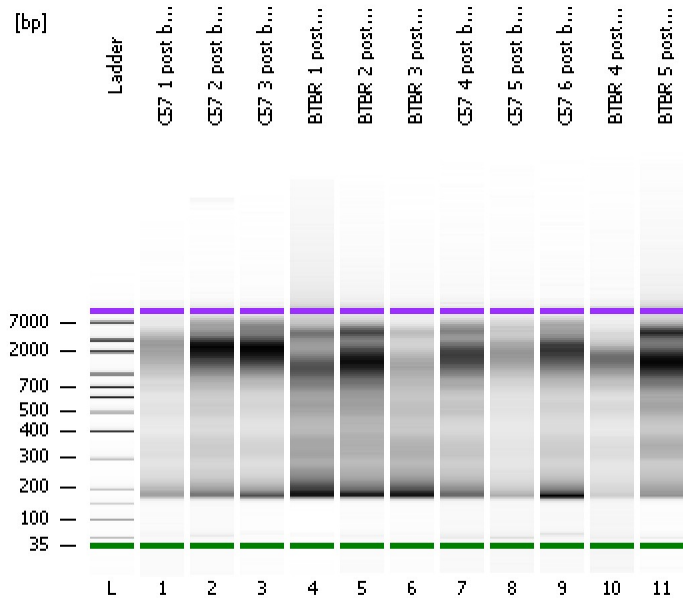


Assay Class: High Sensitivity DNA Assay
Data Path: C:\...ents and Settings\Bioanalyzer\2015-06-12\2015-06-12_001.xad

Created: 6/12/2015 8:12:44 AM
Modified: 6/12/2015 8:55:43 AM

Electrophoresis File Run Summary



Instrument Information:

Instrument Name: DE13701086 Firmware: C.01.069
Serial#: DE13701086 Type: G2938B

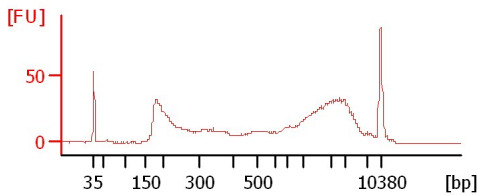
Assay Information:

Assay Origin Path: C:\Program Files\Agilent\2100 bioanalyzer\2100 expert\assays\dsDNA\High Sensitivity DNA.xsy
Assay Class: High Sensitivity DNA Assay
Version: 1.03
Assay Comments: Copyright © 2003-2010 Agilent Technologies

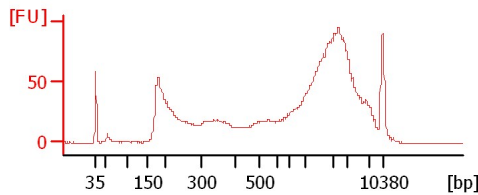
Chip Information:

Chip Lot #:
Reagent Kit Lot #:
Chip Comments:

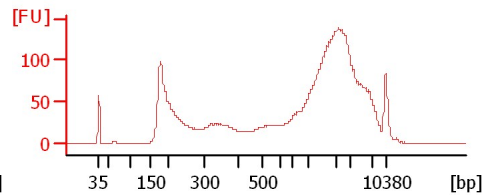
C57 1 post beads



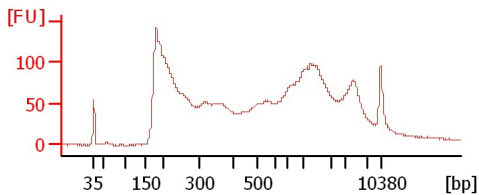
C57 2 post beads



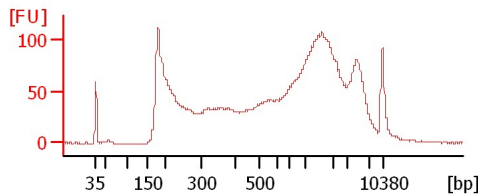
C57 3 post beads



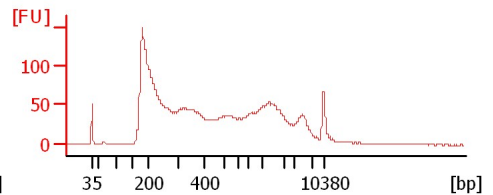
BTBR 1 post beads



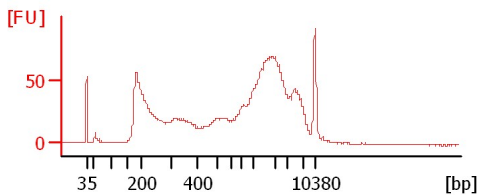
BTBR 2 post beads



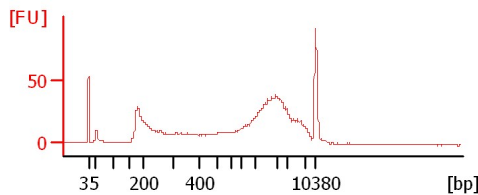
BTBR 3 post beads



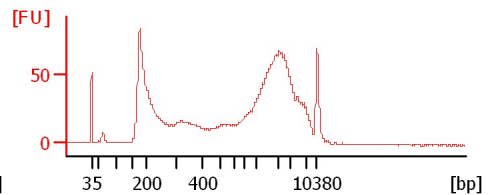
C57 4 post beads



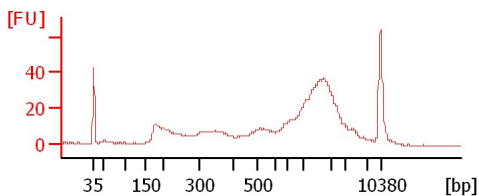
C57 5 post beads



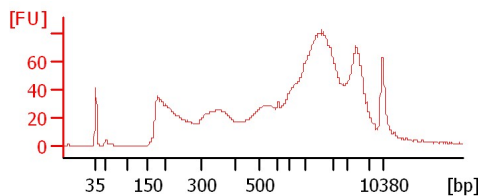
C57 6 post beads



BTBR 4 post beads



BTBR 5 post beads



Assay Class: High Sensitivity DNA Assay
Data Path: C:\...ents and Settings\Bioanalyzer\2015-06-12\2015-06-12_001.xad

Created: 6/12/2015 8:12:44 AM
Modified: 6/12/2015 8:55:43 AM

Electrophoresis File Run Summary (Chip Summary)

Sample Name	Sample Comment	Rest. Digest	Status	Observation	Result Label	Result Color
C57 1 post beads		<input type="checkbox"/>	✓			
C57 2 post beads		<input type="checkbox"/>	✓			
C57 3 post beads		<input type="checkbox"/>	✓			
BTBR 1 post beads		<input type="checkbox"/>	✓			
BTBR 2 post beads		<input type="checkbox"/>	✓			
BTBR 3 post beads		<input type="checkbox"/>	✓			
C57 4 post beads		<input type="checkbox"/>	✓			
C57 5 post beads		<input type="checkbox"/>	✓			
C57 6 post beads		<input type="checkbox"/>	✓			
BTBR 4 post beads		<input type="checkbox"/>	✓			
BTBR 5 post beads		<input type="checkbox"/>	✓			
Ladder		<input type="checkbox"/>	✓			

Chip Lot #

Reagent Kit Lot #

Chip Comments :

Assay Class: High Sensitivity DNA Assay
Data Path: C:\...ents and Settings\Bioanalyzer\2015-06-12\2015-06-12_001.xad

Created: 6/12/2015 8:12:44 AM
Modified: 6/12/2015 8:55:43 AM

Electrophoresis Assay Details

General Analysis Settings

Number of Available Sample and Ladder Wells (Max.) : 12
Minimum Visible Range [s] : 32
Maximum Visible Range [s] : 138
Start Analysis Time Range [s] : 33
End Analysis Time Range [s] : 137.5
Ladder Concentration [pg/μl] : 1950
Uses Standard Area for Ladder Fragments
Lower Marker Concentration [pg/μl] : 125
Upper Marker Concentration [pg/μl] : 75
Used Upper Marker for Quantitation
Standard Curve Fit is Point to Point
Show Data Aligned to Lower and Upper Marker

Integrator Settings

Integration Start Time [s] : 33.05
Integration End Time [s] : 137
Slope Threshold : 0.8
Height Threshold [FU] : 5
Area Threshold : 0.1
Width Threshold [s] : 0.6
Baseline Plateau [s] : 0.5

Filter Settings

Filter Width [s] : 0.5
Polynomial Order : 4

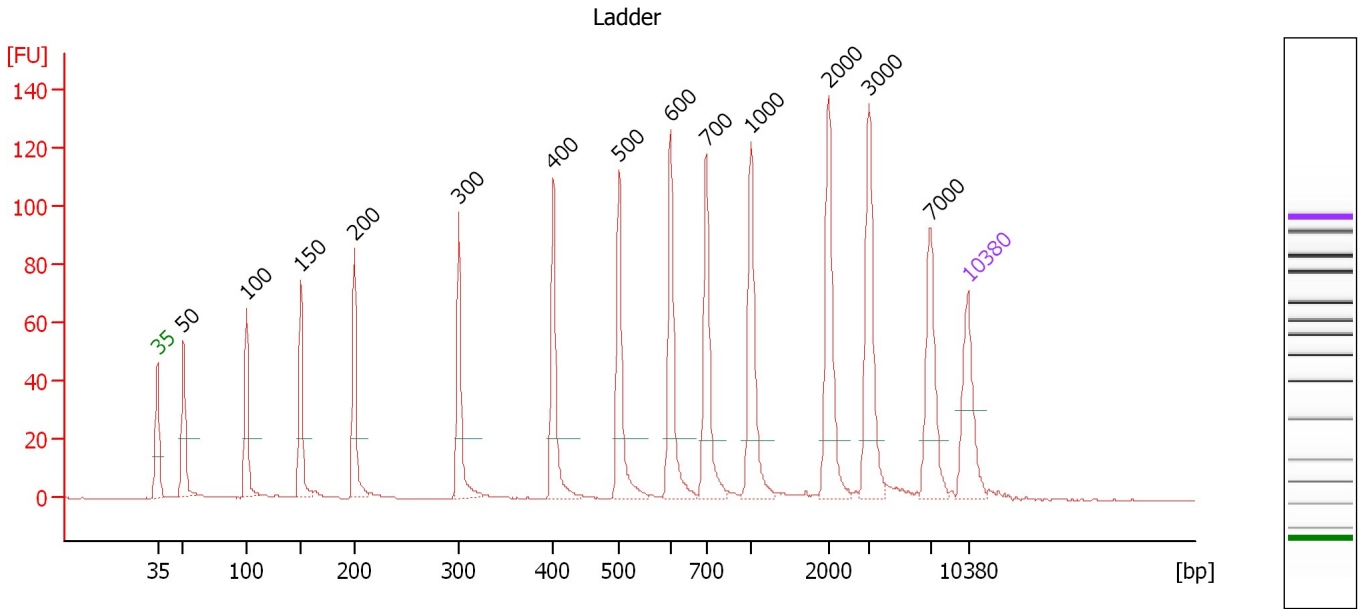
Ladder

Ladder Peak	Size	Area
1	35	160
2	50	210
3	100	208
4	150	221
5	200	242
6	300	270
7	400	305
8	500	306
9	600	336
10	700	321
11	1000	366
12	2000	413
13	3000	411
14	7000	400
15	10380	214

Assay Class: High Sensitivity DNA Assay
 Data Path: C:\...ents and Settings\Bioanalyzer\2015-06-12\2015-06-12_001.xad

Created: 6/12/2015 8:12:44 AM
 Modified: 6/12/2015 8:55:43 AM

Electropherogram Summary



Overall Results for Ladder

Noise: 0.1

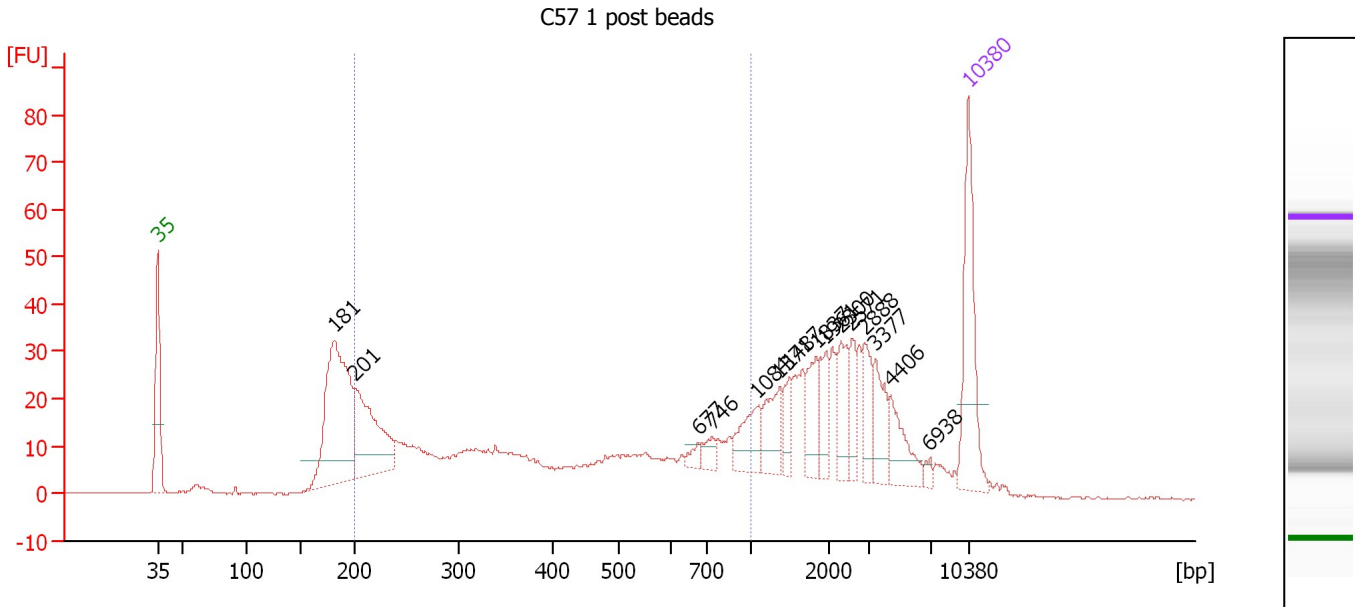
Peak table for Ladder

Peak	Size [bp]	Conc. [pg/μl]	Molarity [pmol/l]	Observations	Aligned Migration Time [s]
1	35	125.00	5,411.3	Lower Marker	43.00
2	50	150.00	4,545.5	Ladder Peak	45.23
3	100	150.00	2,272.7	Ladder Peak	50.67
4	150	150.00	1,515.2	Ladder Peak	55.39
5	200	150.00	1,136.4	Ladder Peak	60.01
6	300	150.00	757.6	Ladder Peak	69.03
7	400	150.00	568.2	Ladder Peak	77.17
8	500	150.00	454.5	Ladder Peak	82.87
9	600	150.00	378.8	Ladder Peak	87.28
10	700	150.00	324.7	Ladder Peak	90.39
11	1,000	150.00	227.3	Ladder Peak	94.23
12	2,000	150.00	113.6	Ladder Peak	100.97
13	3,000	150.00	75.8	Ladder Peak	104.44
14	7,000	150.00	32.5	Ladder Peak	109.73
15	10,380	75.00	10.9	Upper Marker	113.00

Assay Class: High Sensitivity DNA Assay
 Data Path: C:\...ents and Settings\Bioanalyzer\2015-06-12\2015-06-12_001.xad

Created: 6/12/2015 8:12:44 AM
 Modified: 6/12/2015 8:55:43 AM

Electropherogram Summary Continued ...



Overall Results for sample 1 : C57 1 post beads

Number of peaks found: 15 Corr. Area 1: 454.3
 Noise: 0.2

Peak table for sample 1 : C57 1 post beads

Peak	Size [bp]	Conc. [pg/μl]	Molarity [pmol/l]	Observations	Aligned Migration Time [s]
1	35	125.00	5,411.3	Lower Marker	43.00
2	181	228.63	1,911.3		58.28
3	201	126.42	955.2		60.06
4	677	8.49	19.0		89.67
5	746	11.36	23.1		90.97
6	1,084	35.51	49.7		94.79
7	1,371	33.46	37.0		96.73
8	1,487	18.00	18.3		97.51
9	1,837	28.82	23.8		99.87
10	1,961	23.14	17.9		100.71
11	2,300	29.36	19.3		102.01
12	2,571	20.45	12.0		102.96
13	2,888	25.54	13.4		104.05
14	3,377	29.57	13.3		104.94
15	4,406	32.33	11.1		106.30
16	6,938	4.80	1.0		109.65
17	10,380	75.00	10.9	Upper Marker	113.00

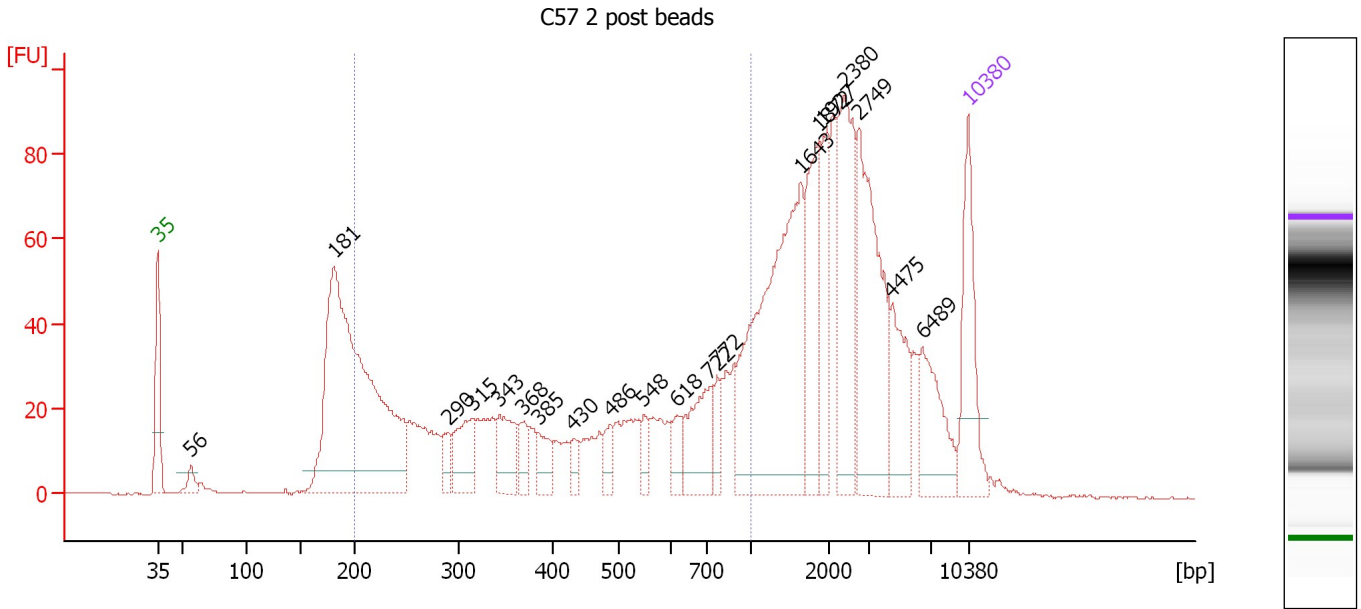
Region table for sample 1 : C57 1 post beads

From [bp]	Average Size [bp]	To [bp]	Corr. Area	Molarity [pmol/l]	Co % of lor Total	Size distribution in CV [%]	Conc. [pg/μl]
200	451	1,000	454.3	3,184.5	46	48.8	696.38

Assay Class: High Sensitivity DNA Assay
 Data Path: C:\...ents and Settings\Bioanalyzer\2015-06-12\2015-06-12_001.xad

Created: 6/12/2015 8:12:44 AM
 Modified: 6/12/2015 8:55:43 AM

Electropherogram Summary Continued ...



Overall Results for sample 2 : C57 2 post beads

Number of peaks found: 20 Corr. Area 1: 807.5
 Noise: 0.2

Peak table for sample 2 : C57 2 post beads


Peak	Size [bp]	Conc. [pg/μl]	Molarity [pmol/l]	Observations	Aligned Migration Time [s]
1	35	125.00	5,411.3	Lower Marker	43.00
2	56	17.57	475.9		45.88
3	181	604.38	5,064.7		58.24
4	290	19.18	100.2		68.14
5	315	59.18	284.4		70.28
6	343	54.94	242.8		72.51
7	368	23.15	95.2		74.59
8	385	26.85	105.7		75.92
9	430	14.22	50.1		78.91
10	486	19.06	59.5		82.05
11	548	19.08	52.8		84.98
12	618	21.33	52.2		87.86
13	722	69.97	146.8		90.68
14	772	22.15	43.5		91.32
15	1,643	284.99	262.8		98.56
16	1,872	88.71	71.8		100.11
17	1,927	55.04	43.3		100.48
18	2,380	130.89	83.3		102.29
19	2,749	159.13	87.7		103.57
20	4,475	58.65	19.9		106.39
21	6,489	64.96	15.2		109.06
22	10,380	75.00	10.9	Upper Marker	113.00

Assay Class: High Sensitivity DNA Assay
Data Path: C:\...ents and Settings\Bioanalyzer\2015-06-12\2015-06-12_001.xad

Created: 6/12/2015 8:12:44 AM
Modified: 6/12/2015 8:55:43 AM

Electropherogram Summary Continued ...

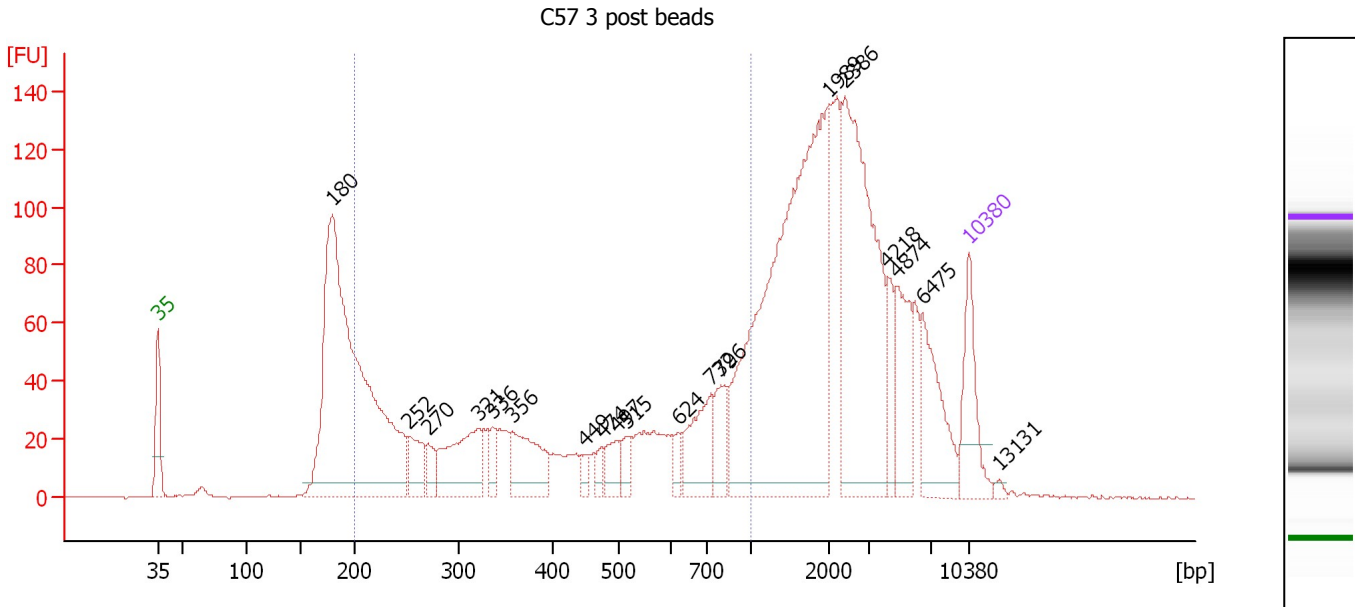
... Region table for sample 2 : C57 2 post beads

From [bp]	Average Size [bp]	To [bp]	Corr. Area	Molarity [pmol/l]	Co % of lor Total	Size distribution in CV [%]	Conc. [pg/ μ l]
200	476	1,000	807.5	4,373.6	 40	47.6	1,002.77

Assay Class: High Sensitivity DNA Assay
 Data Path: C:\...ents and Settings\Bioanalyzer\2015-06-12\2015-06-12_001.xad

Created: 6/12/2015 8:12:44 AM
 Modified: 6/12/2015 8:55:43 AM

Electropherogram Summary Continued ...



Overall Results for sample 3 : C57 3 post beads

Number of peaks found: 19 Corr. Area 1: 1,083.4
 Noise: 0.3

Peak table for sample 3 : C57 3 post beads

Peak	Size [bp]	Conc. [pg/μl]	Molarity [pmol/l]	Observations	Aligned Migration Time [s]
1	35	125.00	5,411.3	Lower Marker	43.00
2	180	970.45	8,179.6		58.14
3	252	62.19	373.8		64.71
4	270	31.62	177.4		66.33
5	321	141.19	666.7		70.73
6	336	29.68	134.0		71.92
7	356	111.49	474.2		73.60
8	449	16.55	55.9		79.95
9	474	17.11	54.8		81.36
10	497	34.94	106.4		82.72
11	515	26.52	78.0		83.53
12	624	22.15	53.7		88.04
13	732	95.84	198.3		90.81
14	796	52.98	100.9		91.62
15	1,989	665.87	507.1		100.90
16	2,386	376.63	239.2		102.31
17	4,218	43.93	15.8		106.05
18	4,874	88.24	27.4		106.92
19	6,475	97.82	22.9		109.04
20	10,380	75.00	10.9	Upper Marker	113.00
21	13,131	0.00	0.0		115.66

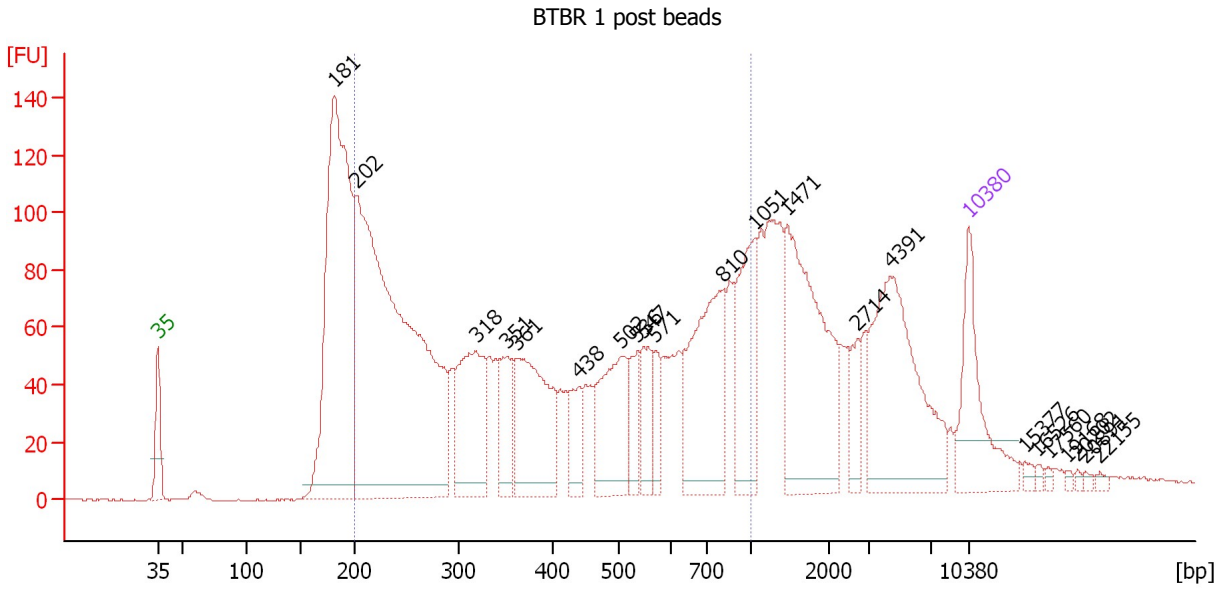
Region table for sample 3 : C57 3 post beads

From [bp]	Average Size [bp]	To [bp]	Corr. Area	Molarity [pmol/l]	Co % of Ior Total	Size distribution in CV [%]	Conc. [pg/μl]
200	481	1,000	1,083.4	5,931.5	36	48.1	1,358.33

Assay Class: High Sensitivity DNA Assay
 Data Path: C:\...ents and Settings\Bioanalyzer\2015-06-12\2015-06-12_001.xad

Created: 6/12/2015 8:12:44 AM
 Modified: 6/12/2015 8:55:43 AM

Electropherogram Summary Continued ...



Overall Results for sample 4 : BTBR 1 post beads

Number of peaks found: 22 Corr. Area 1: 2,472.8
 Noise: 0.4

Peak table for sample 4 : BTBR 1 post beads


Peak	Size [bp]	Conc. [pg/μl]	Molarity [pmol/l]	Observations	Aligned Migration Time [s]
1	35	125.00	5,411.3	Lower Marker	43.00
2	181	512.30	4,285.4		58.27
3	202	798.99	6,004.5		60.15
4	318	146.19	697.0		70.48
5	351	51.23	221.5		73.14
6	361	159.91	670.3		74.03
7	438	37.94	131.1		79.36
8	502	110.25	332.7		82.97
9	536	34.41	97.3		84.47
10	547	41.87	115.9		84.97
11	571	26.78	71.0		86.02
12	810	160.01	299.4		91.79
13	1,051	94.08	135.7		94.57
14	1,471	189.80	195.6		97.40
15	2,714	22.99	12.8		103.45
16	4,391	170.51	58.8		106.28
17	10,380	75.00	10.9	Upper Marker	113.00
18	15,377	0.00	0.0		117.83
19	16,526	0.00	0.0		118.94
20	17,560	0.00	0.0		119.94
21	19,168	0.00	0.0		121.49
22	20,202	0.00	0.0		122.49
23	20,891	0.00	0.0		123.16
24	22,155	0.00	0.0		124.38

Assay Class: High Sensitivity DNA Assay
Data Path: C:\...ents and Settings\Bioanalyzer\2015-06-12\2015-06-12_001.xad

Created: 6/12/2015 8:12:44 AM
Modified: 6/12/2015 8:55:43 AM

Electropherogram Summary Continued ...

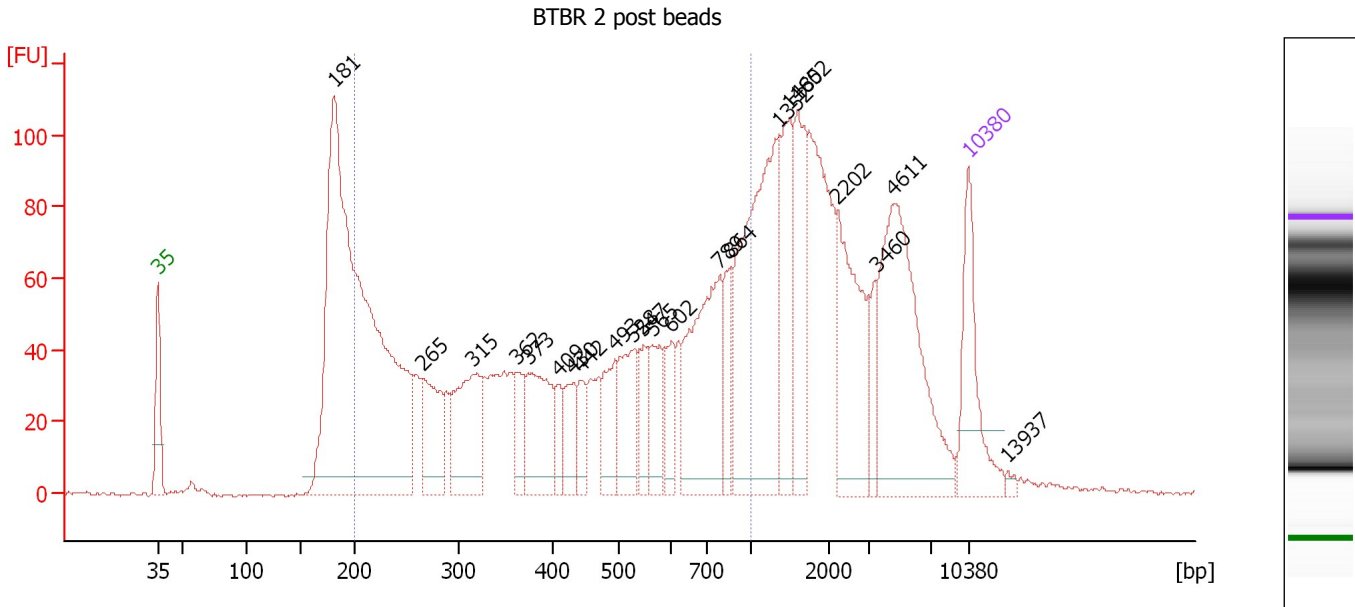
... Region table for sample 4 : BTBR 1 post beads

From [bp]	Average Size [bp]	To [bp]	Corr. Area	Molarity [pmol/l]	Co % of lor Total	Size distribution in CV [%]	Conc. [pg/μl]
200	454	1,000	2,472.8	8,329.7	 59	48.0	1,842.76

Assay Class: High Sensitivity DNA Assay
 Data Path: C:\...ents and Settings\Bioanalyzer\2015-06-12\2015-06-12_001.xad

Created: 6/12/2015 8:12:44 AM
 Modified: 6/12/2015 8:55:43 AM

Electropherogram Summary Continued ...



Overall Results for sample 5 : BTBR 2 post beads

Number of peaks found: 22 Corr. Area 1: 1,744.1
 Noise: 0.5


Peak table for sample 5 : BTBR 2 post beads

Peak	Size [bp]	Conc. [pg/μl]	Molarity [pmol/l]	Observations	Aligned Migration Time [s]
1	35	125.00	5,411.3	Lower Marker	43.00
2	181	943.65	7,916.5		58.22
3	265	97.79	558.9		65.88
4	315	124.06	596.1		70.28
5	362	37.33	156.3		74.05
6	373	104.62	424.4		75.01
7	409	26.52	98.3		77.66
8	430	38.55	135.7		78.90
9	442	31.00	106.2		79.58
10	493	55.57	170.9		82.45
11	528	70.92	203.7		84.09
12	547	33.76	93.6		84.93
13	565	51.97	139.5		85.72
14	602	38.59	97.1		87.36
15	789	170.79	328.1		91.53
16	864	40.39	70.9		92.48
17	1,352	260.47	292.0		96.60
18	1,485	90.99	92.8		97.50
19	1,602	94.08	89.0		98.29
20	2,202	119.03	81.9		101.67
21	3,460	27.86	12.2		105.05
22	4,611	210.55	69.2		106.57
23	10,380	75.00	10.9	Upper Marker	113.00
24	13,937	0.00	0.0		116.44

Assay Class: High Sensitivity DNA Assay
Data Path: C:\...ents and Settings\Bioanalyzer\2015-06-12\2015-06-12_001.xad

Created: 6/12/2015 8:12:44 AM
Modified: 6/12/2015 8:55:43 AM

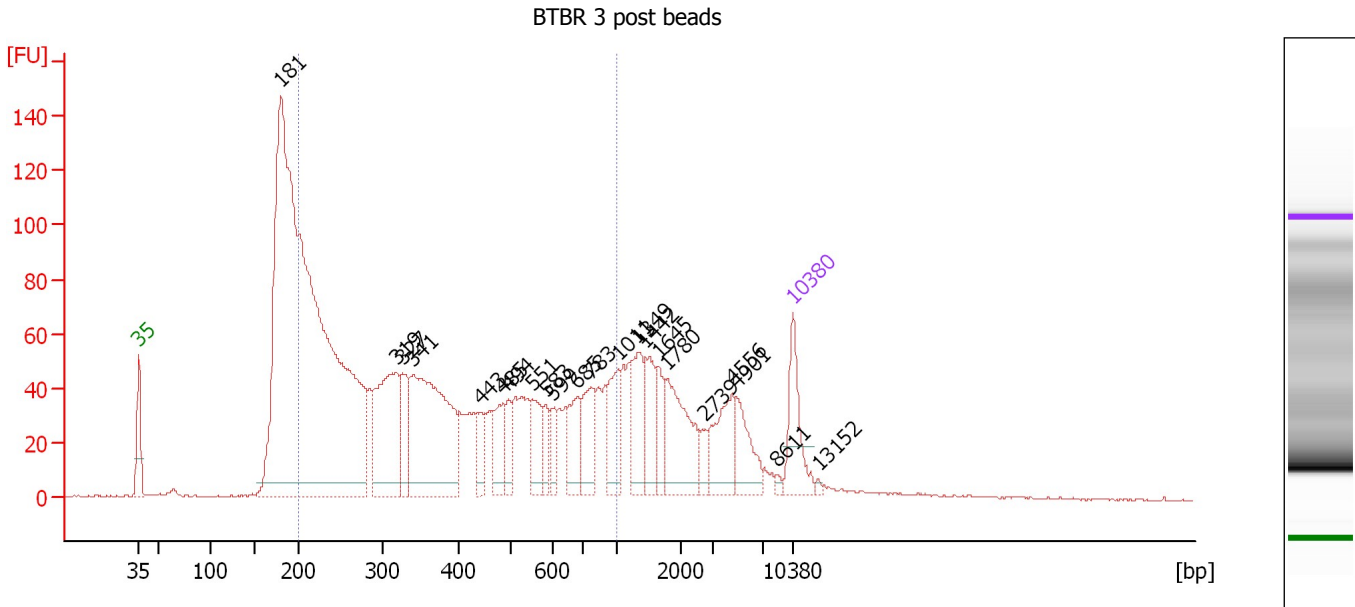
Electropherogram Summary Continued ...**... Region table for sample 5 : BTBR 2 post beads**

From [bp]	Average Size [bp]	To [bp]	Corr. Area	Molarity [pmol/l]	Co % of lor Total	Size distribution in CV [%]	Conc. [pg/μl]
200	486	1,000	1,744.1	7,202.2	 51	45.6	1,705.68

Assay Class: High Sensitivity DNA Assay
 Data Path: C:\...ents and Settings\Bioanalyzer\2015-06-12\2015-06-12_001.xad

Created: 6/12/2015 8:12:44 AM
 Modified: 6/12/2015 8:55:43 AM

Electropherogram Summary Continued ...



Overall Results for sample 6 : BTBR 3 post beads

Number of peaks found: 22 Corr. Area 1: 1,941.3
 Noise: 0.3

Peak table for sample 6 : BTBR 3 post beads


Peak	Size [bp]	Conc. [pg/μl]	Molarity [pmol/l]	Observations	Aligned Migration Time [s]
1	35	125.00	5,411.3	Lower Marker	43.00
2	181	2,385.41	20,008.9		58.22
3	319	265.24	1,259.2		70.59
4	327	90.19	418.1		71.22
5	341	409.82	1,821.6		72.36
6	443	44.79	153.4		79.60
7	485	64.84	202.8		81.99
8	494	42.50	130.2		82.56
9	551	65.68	180.6		85.13
10	583	35.18	91.4		86.55
11	599	33.85	85.6		87.23
12	685	73.99	163.7		89.91
13	783	81.11	157.0		91.45
14	1,011	73.19	109.7		94.30
15	1,349	82.43	92.6		96.58
16	1,442	72.55	76.2		97.21
17	1,645	41.99	38.7		98.58
18	1,780	126.44	107.6		99.49
19	2,739	21.60	11.9		103.54
20	4,556	86.14	28.6		106.50
21	4,901	64.32	19.9		106.96
22	8,611	5.25	0.9		111.29
23	10,380	75.00	10.9	Upper Marker	113.00
24	13,152	0.00	0.0		115.68

Assay Class: High Sensitivity DNA Assay
Data Path: C:\...ents and Settings\Bioanalyzer\2015-06-12\2015-06-12_001.xad

Created: 6/12/2015 8:12:44 AM
Modified: 6/12/2015 8:55:43 AM

Electropherogram Summary Continued ...

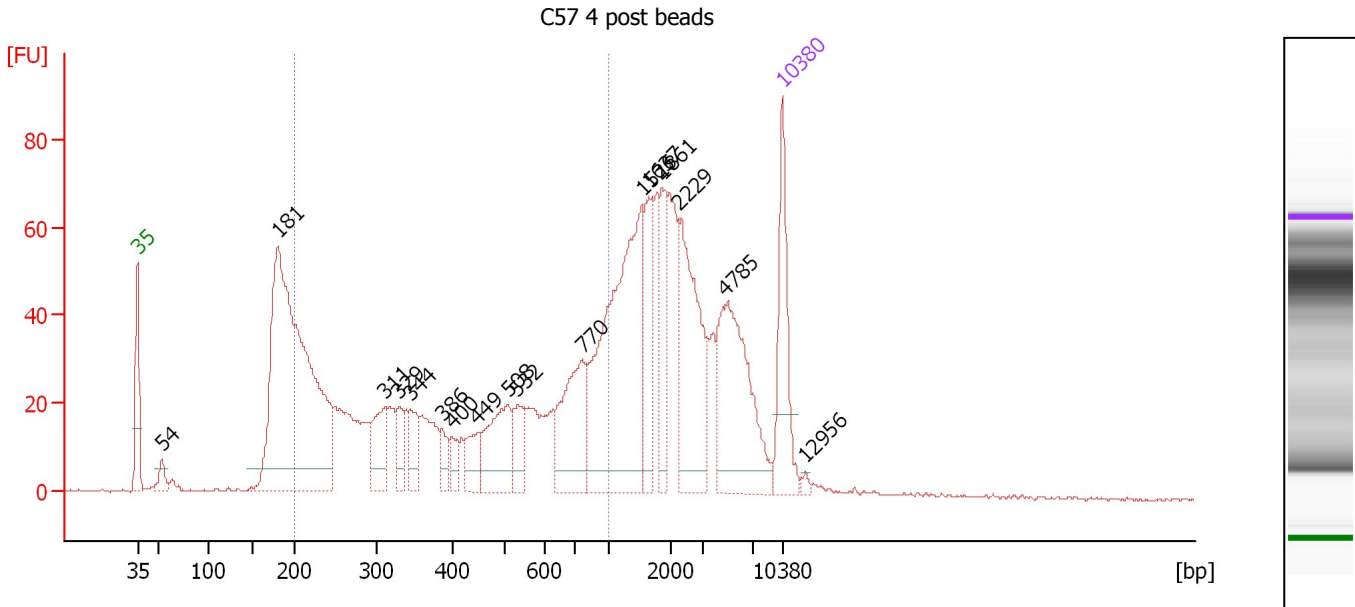
... Region table for sample 6 : BTBR 3 post beads

From [bp]	Average Size [bp]	To [bp]	Corr. Area	Molarity [pmol/l]	Co % of lor Total	Size distribution in CV [%]	Conc. [pg/ μ l]
200	421	1,000	1,941.3	13,746.5	 62	47.7	2,917.11

Assay Class: High Sensitivity DNA Assay
 Data Path: C:\...ents and Settings\Bioanalyzer\2015-06-12\2015-06-12_001.xad

Created: 6/12/2015 8:12:44 AM
 Modified: 6/12/2015 8:55:43 AM

Electropherogram Summary Continued ...



Overall Results for sample 7 : C57 4 post beads

Number of peaks found: 17 Corr. Area 1: 907.2
 Noise: 0.3

Peak table for sample 7 : C57 4 post beads

Peak	Size [bp]	Conc. [pg/μl]	Molarity [pmol/l]	Observations	Aligned Migration Time [s]
1	35	125.00	5,411.3	Lower Marker	43.00
2	54	20.66	580.0		45.66
3	181	670.80	5,624.1		58.23
4	311	56.50	275.3		69.92
5	329	29.93	137.6		71.43
6	344	35.12	154.5		72.64
7	386	19.77	77.5		76.06
8	400	17.38	65.9		77.16
9	449	32.43	109.6		79.94
10	508	83.17	247.9		83.24
11	532	35.54	101.2		84.28
12	770	105.49	207.6		91.29
13	1,526	273.05	271.2		97.77
14	1,637	65.54	60.7		98.53
15	1,861	50.74	41.3		100.03
16	2,229	137.06	93.1		101.77
17	4,785	148.98	47.2		106.80
18	10,380	75.00	10.9	Upper Marker	113.00
19	12,956	0.00	0.0		115.49

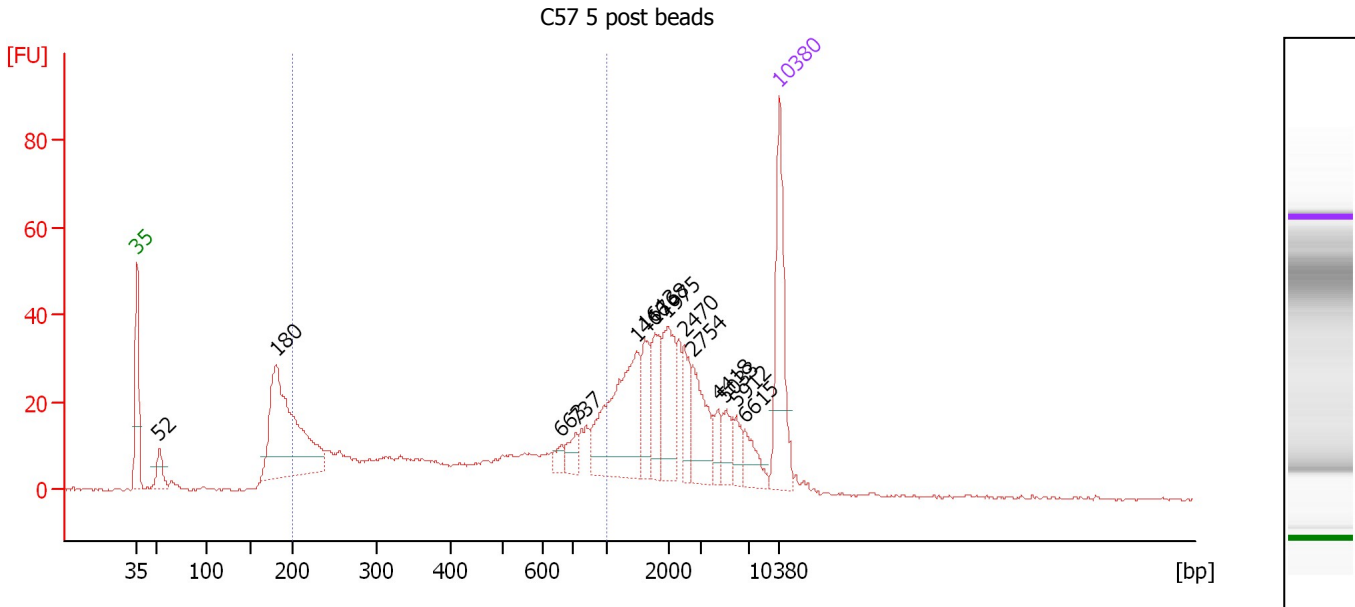
Region table for sample 7 : C57 4 post beads

From [bp]	Average Size [bp]	To [bp]	Corr. Area	Molarity [pmol/l]	Co % of lor Total	Size distribution in CV [%]	Conc. [pg/μl]
200	474	1,000	907.2	5,173.0	46	47.7	1,182.26

Assay Class: High Sensitivity DNA Assay
 Data Path: C:\...ents and Settings\Bioanalyzer\2015-06-12\2015-06-12_001.xad

Created: 6/12/2015 8:12:44 AM
 Modified: 6/12/2015 8:55:43 AM

Electropherogram Summary Continued ...



Overall Results for sample 8 : C57 5 post beads

Number of peaks found: 14 Corr. Area 1: 402.5
 Noise: 0.3

Peak table for sample 8 : C57 5 post beads

Peak	Size [bp]	Conc. [pg/μl]	Molarity [pmol/l]	Observations	Aligned Migration Time [s]
1	35	125.00	5,411.3	Lower Marker	43.00
2	52	27.57	804.4		45.44
3	180	238.55	2,008.0		58.16
4	663	9.43	21.5		89.24
5	737	15.28	31.4		90.87
6	1,466	111.18	114.9		97.37
7	1,613	34.03	32.0		98.36
8	1,768	35.12	30.1		99.41
9	1,975	49.46	37.9		100.80
10	2,470	26.06	16.0		102.60
11	2,754	43.23	23.8		103.59
12	4,418	14.28	4.9		106.32
13	5,033	18.42	5.5		107.13
14	5,912	14.08	3.6		108.29
15	6,615	19.58	4.5		109.22
16	10,380	75.00	10.9	Upper Marker	113.00

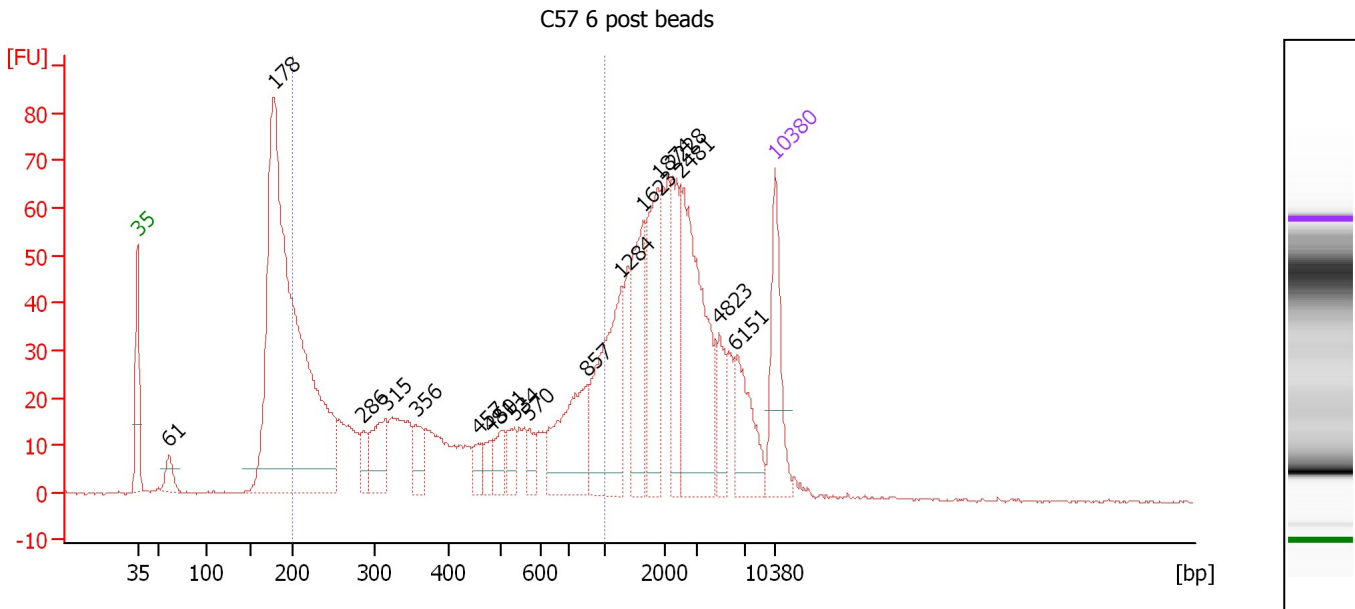
Region table for sample 8 : C57 5 post beads

From [bp]	Average Size [bp]	To [bp]	Corr. Area	Molarity [pmol/l]	Co % of lor Total	Size distribution in CV [%]	Conc. [pg/μl]
200	484	1,000	402.5	2,356.7	42	47.3	547.34

Assay Class: High Sensitivity DNA Assay
 Data Path: C:\...ents and Settings\Bioanalyzer\2015-06-12\2015-06-12_001.xad

Created: 6/12/2015 8:12:44 AM
 Modified: 6/12/2015 8:55:43 AM

Electropherogram Summary Continued ...



Overall Results for sample 9 : C57 6 post beads

Number of peaks found: 18 Corr. Area 1: 727.5
 Noise: 0.3

Peak table for sample 9 : C57 6 post beads

Peak	Size [bp]	Conc. [pg/μl]	Molarity [pmol/l]	Observations	Aligned Migration Time [s]
1	35	125.00	5,411.3	Lower Marker	43.00
2	61	31.76	785.8		46.45
3	178	973.75	8,285.4		57.98
4	286	24.90	132.0		67.76
5	315	60.67	291.5		70.27
6	356	33.46	142.6		73.55
7	457	18.24	60.5		80.40
8	481	18.96	59.7		81.80
9	501	27.71	83.8		82.92
10	534	23.18	65.7		84.38
11	570	19.08	50.7		85.96
12	857	115.81	204.8		92.40
13	1,284	146.84	173.3		96.14
14	1,623	100.97	94.3		98.43
15	1,874	103.16	83.4		100.12
16	2,228	71.00	48.3		101.76
17	2,481	189.60	115.8		102.64
18	4,823	38.99	12.3		106.85
19	6,151	65.27	16.1		108.61
20	10,380	75.00	10.9	Upper Marker	113.00

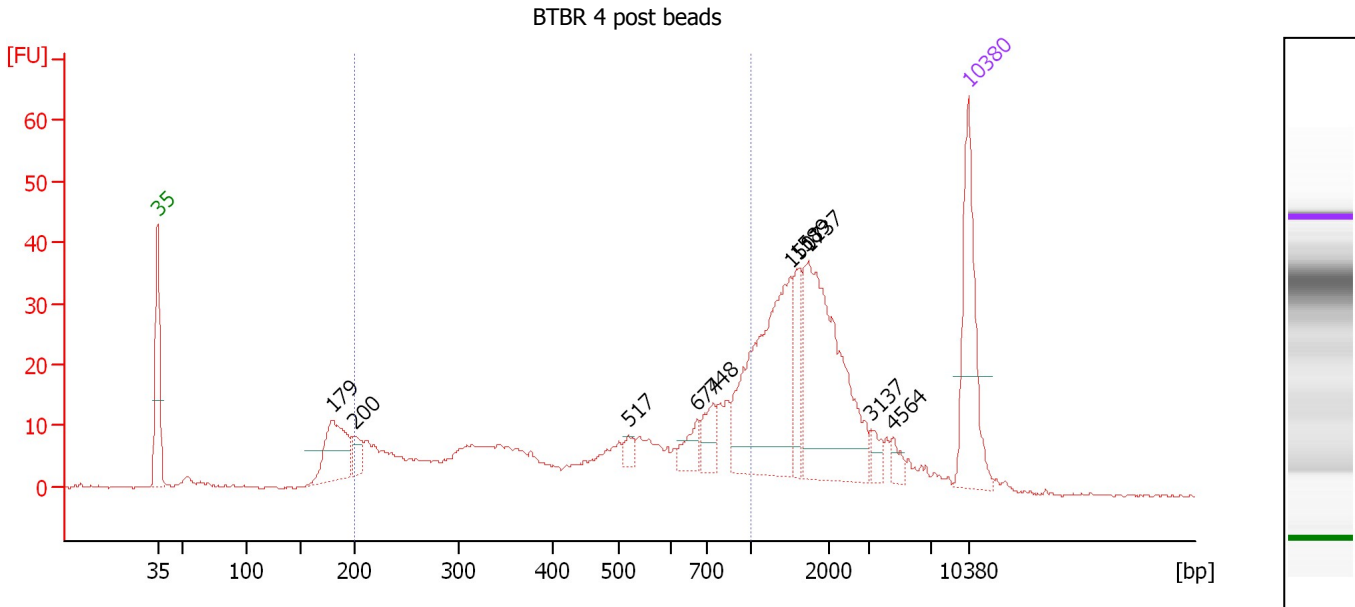
Region table for sample 9 : C57 6 post beads

From [bp]	Average Size [bp]	To [bp]	Corr. Area	Molarity [pmol/l]	Co % of Ior Total	Size distribution in CV [%]	Conc. [pg/μl]
200	455	1,000	727.5	5,112.2	40	49.3	1,121.81

Assay Class: High Sensitivity DNA Assay
 Data Path: C:\...ents and Settings\Bioanalyzer\2015-06-12\2015-06-12_001.xad

Created: 6/12/2015 8:12:44 AM
 Modified: 6/12/2015 8:55:43 AM

Electropherogram Summary Continued ...



Overall Results for sample 10 : BTBR 4 post beads

Number of peaks found: 10 Corr. Area 1: 318.2
 Noise: 0.2

Peak table for sample 10 : BTBR 4 post beads

Peak	Size [bp]	Conc. [pg/μl]	Molarity [pmol/l]	Observations	Aligned Migration Time [s]
1	35	125.00	5,411.3	Lower Marker	43.00
2	179	74.58	630.2		58.10
3	200	17.95	135.7		60.04
4	517	8.00	23.4		83.63
5	674	18.86	42.4		89.59
6	748	21.58	43.7		91.00
7	1,501	151.12	152.5		97.61
8	1,589	34.12	32.5		98.20
9	1,737	158.48	138.2		99.20
10	3,137	9.46	4.6		104.63
11	4,564	8.15	2.7		106.51
12	10,380	75.00	10.9	Upper Marker	113.00

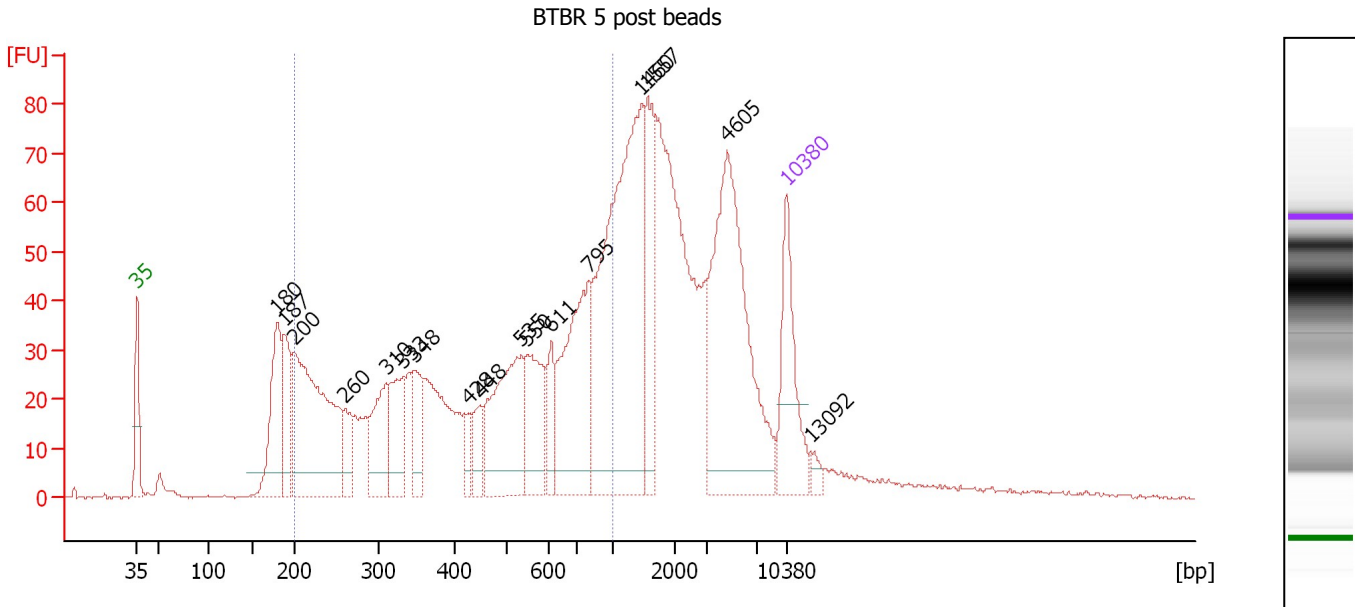
Region table for sample 10 : BTBR 4 post beads

From [bp]	Average Size [bp]	To [bp]	Corr. Area	Molarity [pmol/l]	Co % of Ior Total	Size distribution in CV [%]	Conc. [pg/μl]
200	524	1,000	318.2	2,055.1	46	44.6	520.44

Assay Class: High Sensitivity DNA Assay
 Data Path: C:\...ents and Settings\Bioanalyzer\2015-06-12\2015-06-12_001.xad

Created: 6/12/2015 8:12:44 AM
 Modified: 6/12/2015 8:55:43 AM

Electropherogram Summary Continued ...



Overall Results for sample 11 : BTBR 5 post beads

Number of peaks found: 17 Corr. Area 1: 1,080.4
 Noise: 0.3

Peak table for sample 11 : BTBR 5 post beads

Peak	Size [bp]	Conc. [pg/μl]	Molarity [pmol/l]	Observations	Aligned Migration Time [s]
1	35	125.00	5,411.3	Lower Marker	43.00
2	180	125.64	1,059.5		58.13
3	187	81.96	662.6		58.85
4	200	307.30	2,331.6		59.98
5	260	38.88	226.8		65.40
6	310	76.06	372.2		69.81
7	333	70.31	319.9		71.71
8	348	51.33	223.3		72.97
9	428	21.06	74.6		78.74
10	448	29.96	101.2		79.94
11	535	141.99	402.3		84.40
12	550	80.68	222.4		85.06
13	611	31.37	77.8		87.62
14	795	159.55	303.9		91.61
15	1,460	347.18	360.2		97.33
16	1,557	89.27	86.8		97.99
17	4,605	250.29	82.4		106.57
18	10,380	75.00	10.9	Upper Marker	113.00
19	13,092	0.00	0.0		115.62

Region table for sample 11 : BTBR 5 post beads

From [bp]	Average Size [bp]	To [bp]	Corr. Area	Molarity [pmol/l]	Co % of Ior Total	Size distribution in CV [%]	Conc. [pg/μl]
200	505	1,000	1,080.4	5,542.4	48	44.3	1,376.08

Assay Class: High Sensitivity DNA Assay
Data Path: C:\...ents and Settings\Bioanalyzer\2015-06-12\2015-06-12_001.xad

Created: 6/12/2015 8:12:44 AM
Modified: 6/12/2015 8:55:43 AM

Gel Image

