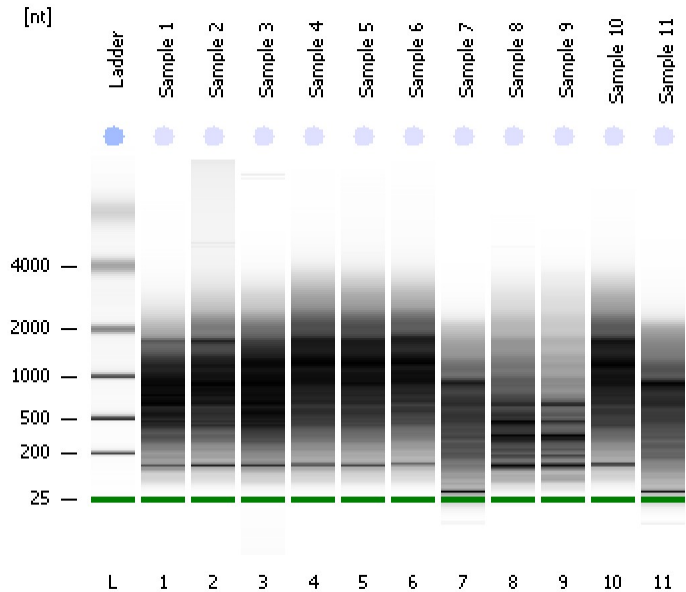


Assay Class: Eukaryote Total RNA Pico
Data Path: C:\...ents and Settings\Bioanalyzer\2015-06-16\2015-06-16_002.xad

Created: 6/16/2015 1:26:45 PM
Modified: 6/16/2015 1:49:41 PM

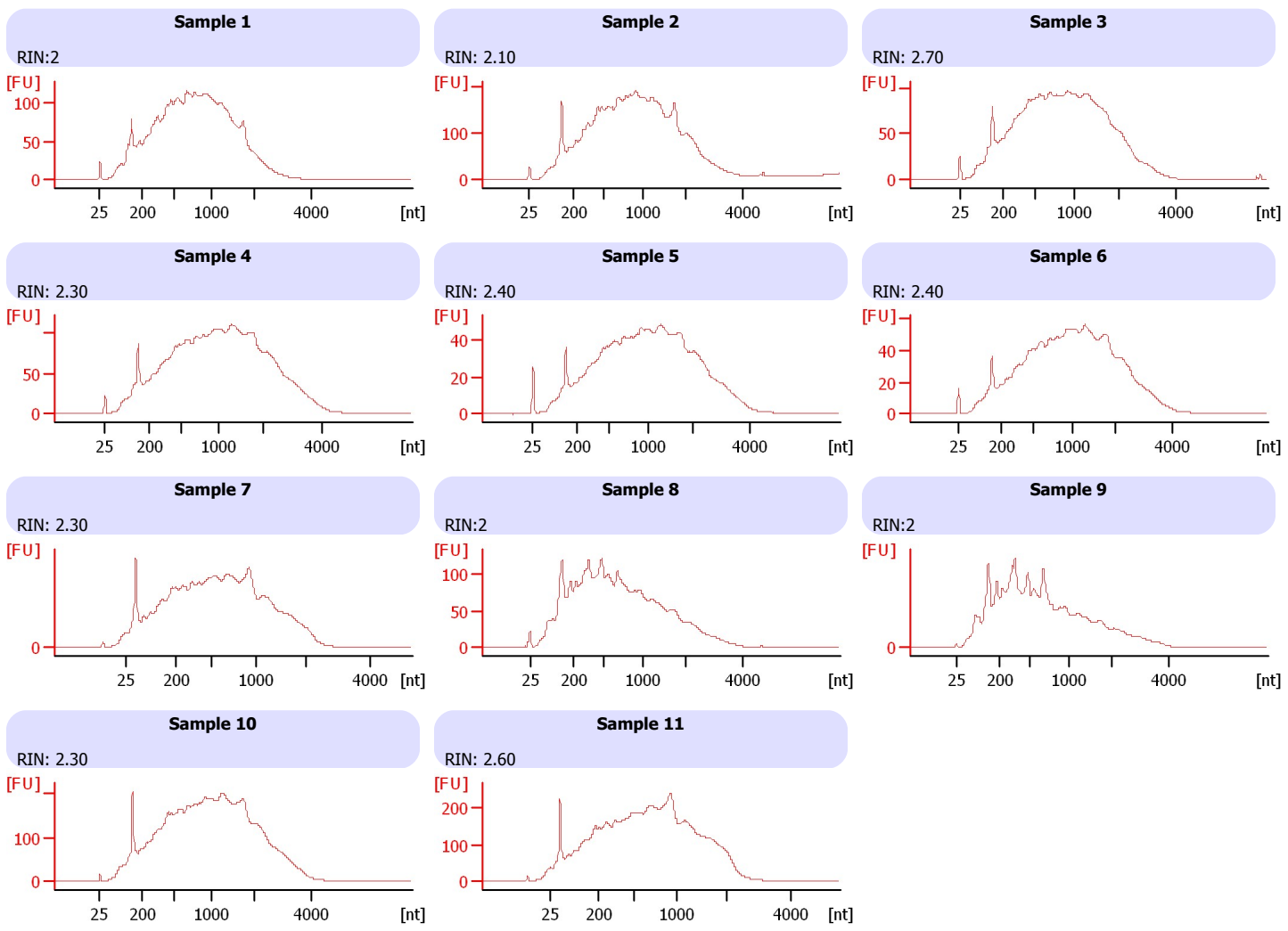
Electrophoresis File Run Summary



Instrument Information:
Instrument Name: DE13701086 Firmware: C.01.069
Serial#: DE13701086 Type: G2938B

Assay Information:
Assay Origin Path: C:\Program Files\Agilent\2100 bioanalyzer\2100 expert\assays\RNA\Eukaryote Total RNA Pico Series II.xsy
Assay Class: Eukaryote Total RNA Pico
Version: 2.6
Assay Comments: Total RNA Analysis pg sensitivity (Eukaryote)
© Copyright 2003 - 2009 Agilent Technologies, Inc.

Chip Information:
Chip Lot #: Reagent Kit Lot #: Chip Comments:



Assay Class: Eukaryote Total RNA Pico
Data Path: C:\...ents and Settings\Bioanalyzer\2015-06-16\2015-06-16_002.xad

Created: 6/16/2015 1:26:45 PM
Modified: 6/16/2015 1:49:41 PM

Electrophoresis File Run Summary (Chip Summary)

Sample Name	Sample Comment	Status	Result Label	Result Color
Sample 1		✓	RIN:2	
Sample 2		✓	RIN: 2.10	
Sample 3		✓	RIN: 2.70	
Sample 4		✓	RIN: 2.30	
Sample 5		✓	RIN: 2.40	
Sample 6		✓	RIN: 2.40	
Sample 7		✓	RIN: 2.30	
Sample 8		✓	RIN:2	
Sample 9		✓	RIN:2	
Sample 10		✓	RIN: 2.30	
Sample 11		✓	RIN: 2.60	
Ladder		✓	All Other Samples	

Chip Lot #

Reagent Kit Lot #

Chip Comments :

Assay Class: Eukaryote Total RNA Pico
Data Path: C:\...ents and Settings\Bioanalyzer\2015-06-16\2015-06-16_002.xad

Created: 6/16/2015 1:26:45 PM
Modified: 6/16/2015 1:49:41 PM

Electrophoresis Assay Details

General Analysis Settings

Number of Available Sample and Ladder Wells (Max.) : 12
Minimum Visible Range [s] : 17
Maximum Visible Range [s] : 70
Start Analysis Time Range [s] : 18
End Analysis Time Range [s] : 69
Ladder Concentration [pg/ μ l] : 1000
Lower Marker Concentration [pg/ μ l] : 0
Upper Marker Concentration [pg/ μ l] : 0
Used Lower Marker for Quantitation
Standard Curve Fit is Logarithmic
Show Data Aligned to Lower Marker

Integrator Settings

Integration Start Time [s] : 18
Integration End Time [s] : 69
Slope Threshold : 0.6
Height Threshold [FU] : 0.5
Area Threshold : 0.2
Width Threshold [s] : 0.3
Baseline Plateau [s] : 6

Filter Settings

Filter Width [s] : 0.5
Polynomial Order : 4

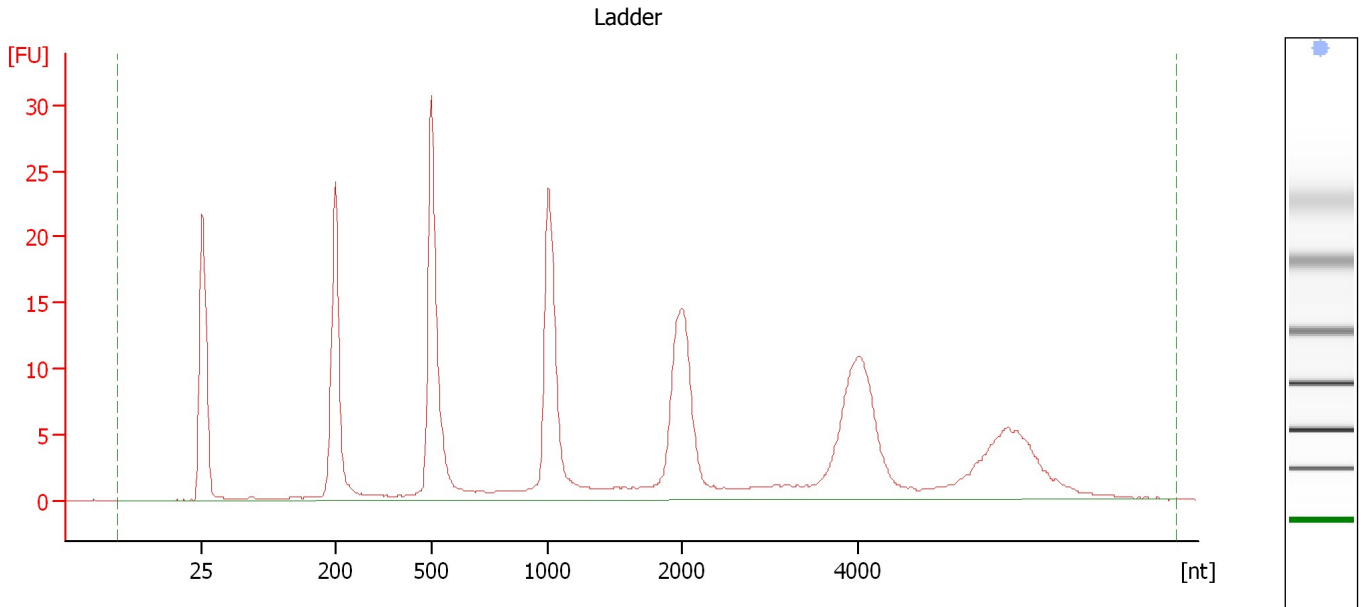
Ladder

Ladder Peak	Size
1	25
2	200
3	500
4	1000
5	2000
6	4000

Assay Class: Eukaryote Total RNA Pico
Data Path: C:\...ents and Settings\Bioanalyzer\2015-06-16\2015-06-16_002.xad

Created: 6/16/2015 1:26:45 PM
Modified: 6/16/2015 1:49:41 PM

Electropherogram Summary



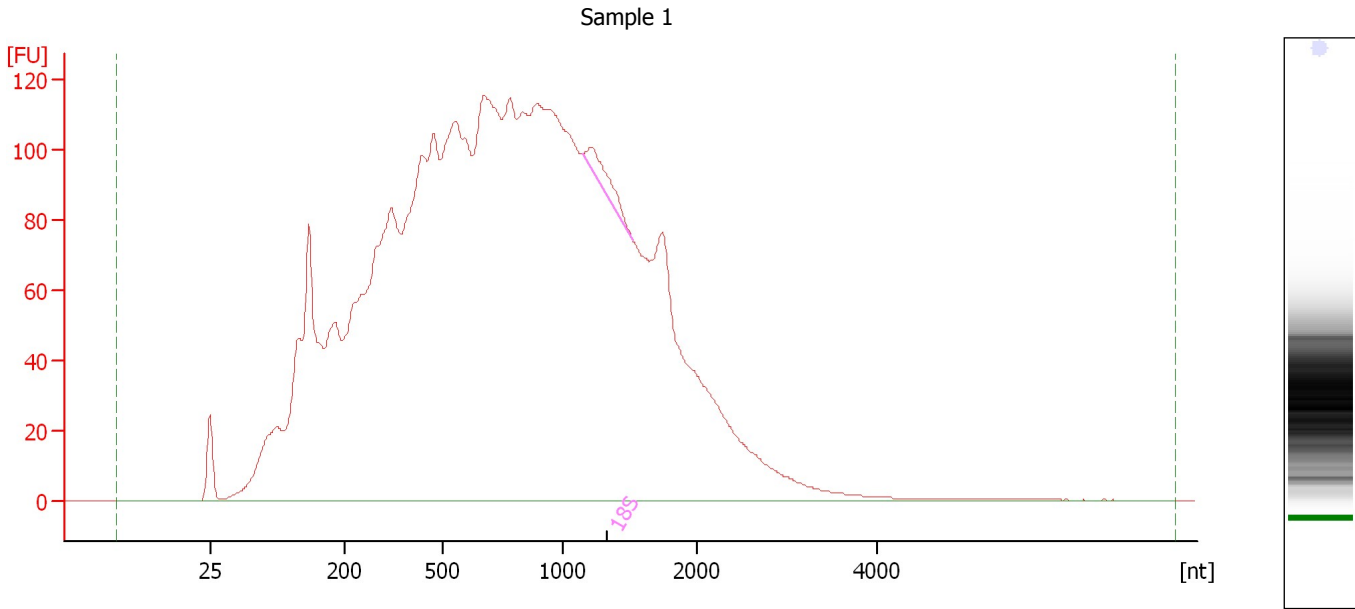
Overall Results for Ladder

RNA Area:	257.9	Result Flagging Color:	
RNA Concentration:	1,000 pg/μl	Result Flagging Label:	All Other Samples

Assay Class: Eukaryote Total RNA Pico
Data Path: C:\...ents and Settings\Bioanalyzer\2015-06-16\2015-06-16_002.xad

Created: 6/16/2015 1:26:45 PM
Modified: 6/16/2015 1:49:41 PM

Electropherogram Summary Continued ...



Overall Results for sample 1 : Sample 1

RNA Area:	4,599.8	RNA Integrity Number (RIN):	2 (B.02.08)
RNA Concentration:	17,835 pg/μl	Result Flagging Color:	
rRNA Ratio [28s / 18s]:	0.0	Result Flagging Label:	RIN:2

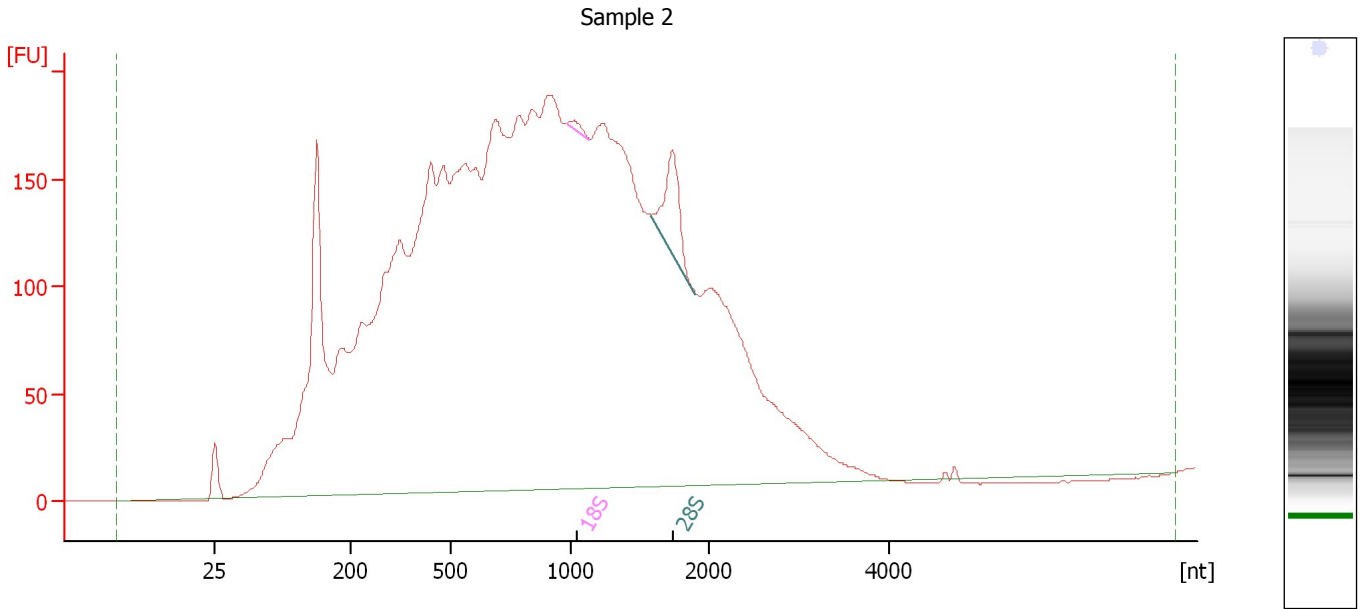
Fragment table for sample 1 : Sample 1

Name	Start Size [nt]	End Size [nt]	Area	% of total Area
18S	1,153	1,515	24.3	0.5

Assay Class: Eukaryote Total RNA Pico
 Data Path: C:\...ents and Settings\Bioanalyzer\2015-06-16\2015-06-16_002.xad

Created: 6/16/2015 1:26:45 PM
 Modified: 6/16/2015 1:49:41 PM

Electropherogram Summary Continued ...



Overall Results for sample 2 : Sample 2

RNA Area:	7,458.0	RNA Integrity Number (RIN):	2.1 (B.02.08)
RNA Concentration:	28,917 pg/μl	Result Flagging Color:	
rRNA Ratio [28s / 18s]:	13.8	Result Flagging Label:	RIN: 2.10

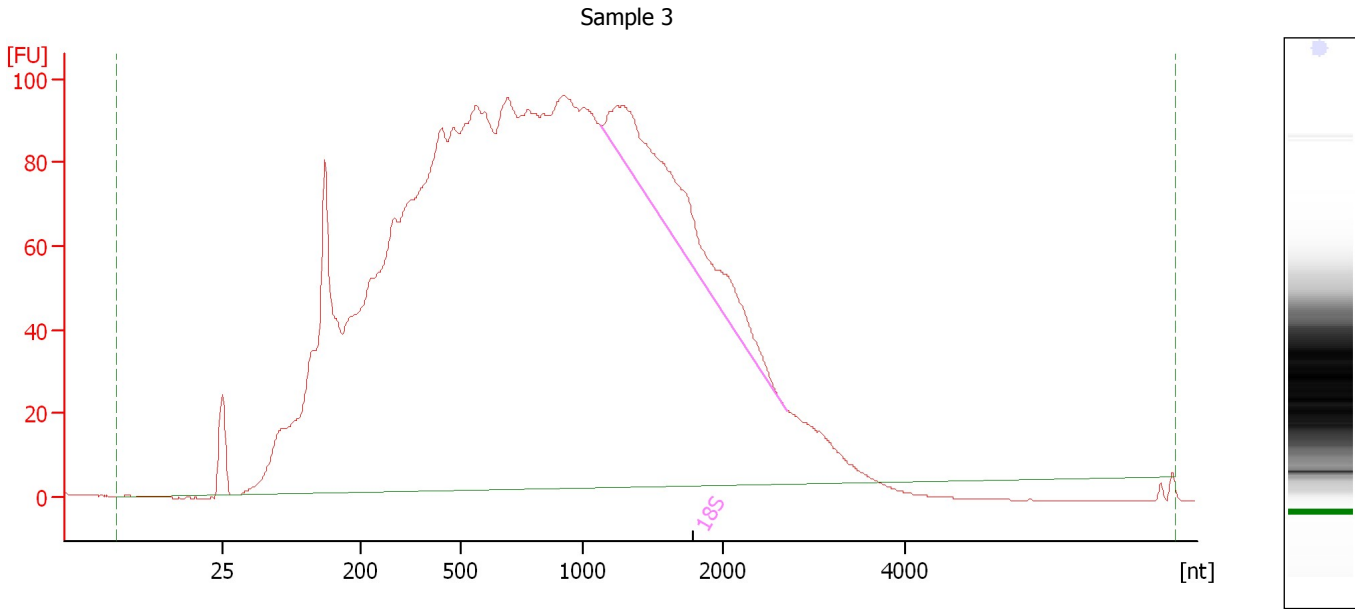
Fragment table for sample 2 : Sample 2

Name	Start Size [nt]	End Size [nt]	Area	% of total Area
18S	982	1,132	5.8	0.1
28S	1,583	1,903	79.4	1.1

Assay Class: Eukaryote Total RNA Pico
Data Path: C:\...ents and Settings\Bioanalyzer\2015-06-16\2015-06-16_002.xad

Created: 6/16/2015 1:26:45 PM
Modified: 6/16/2015 1:49:41 PM

Electropherogram Summary Continued ...



Overall Results for sample 3 : Sample 3

RNA Area:	4,227.9	RNA Integrity Number (RIN):	2.7 (B.02.08)
RNA Concentration:	16,393 pg/μl	Result Flagging Color:	
rRNA Ratio [28s / 18s]:	0.0	Result Flagging Label:	RIN: 2.70

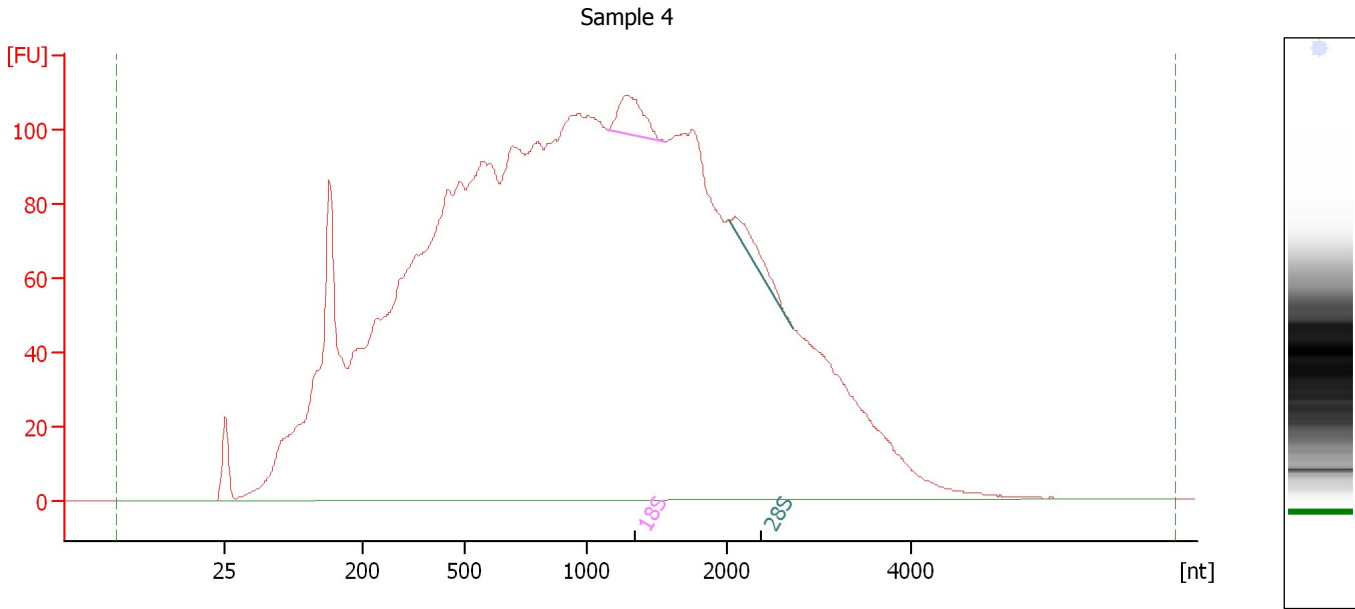
Fragment table for sample 3 : Sample 3

Name	Start Size [nt]	End Size [nt]	Area	% of total Area
18S	1,124	2,700	170.1	4.0

Assay Class: Eukaryote Total RNA Pico
 Data Path: C:\...ents and Settings\Bioanalyzer\2015-06-16\2015-06-16_002.xad

Created: 6/16/2015 1:26:45 PM
 Modified: 6/16/2015 1:49:41 PM

Electropherogram Summary Continued ...



Overall Results for sample 4 : Sample 4

RNA Area:	4,963.3	RNA Integrity Number (RIN):	2.3 (B.02.08)
RNA Concentration:	19,244 pg/μl	Result Flagging Color:	
rRNA Ratio [28s / 18s]:	0.7	Result Flagging Label:	RIN: 2.30

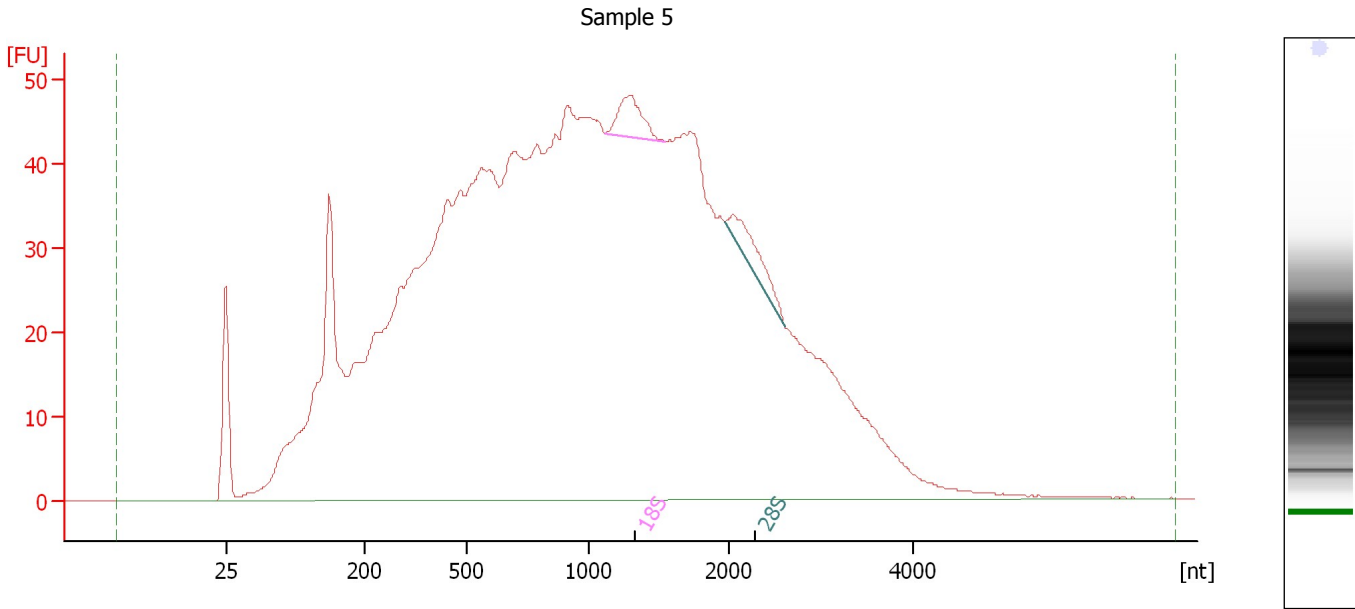
Fragment table for sample 4 : Sample 4

Name	Start Size [nt]	End Size [nt]	Area	% of total Area
18S	1,143	1,556	32.8	0.7
28S	2,010	2,709	21.3	0.4

Assay Class: Eukaryote Total RNA Pico
Data Path: C:\...ents and Settings\Bioanalyzer\2015-06-16\2015-06-16_002.xad

Created: 6/16/2015 1:26:45 PM
Modified: 6/16/2015 1:49:41 PM

Electropherogram Summary Continued ...



Overall Results for sample 5 : Sample 5

RNA Area:	2,121.9	RNA Integrity Number (RIN):	2.4 (B.02.08)
RNA Concentration:	8,227 pg/μl	Result Flagging Color:	
rRNA Ratio [28s / 18s]:	1.0	Result Flagging Label:	RIN: 2.40

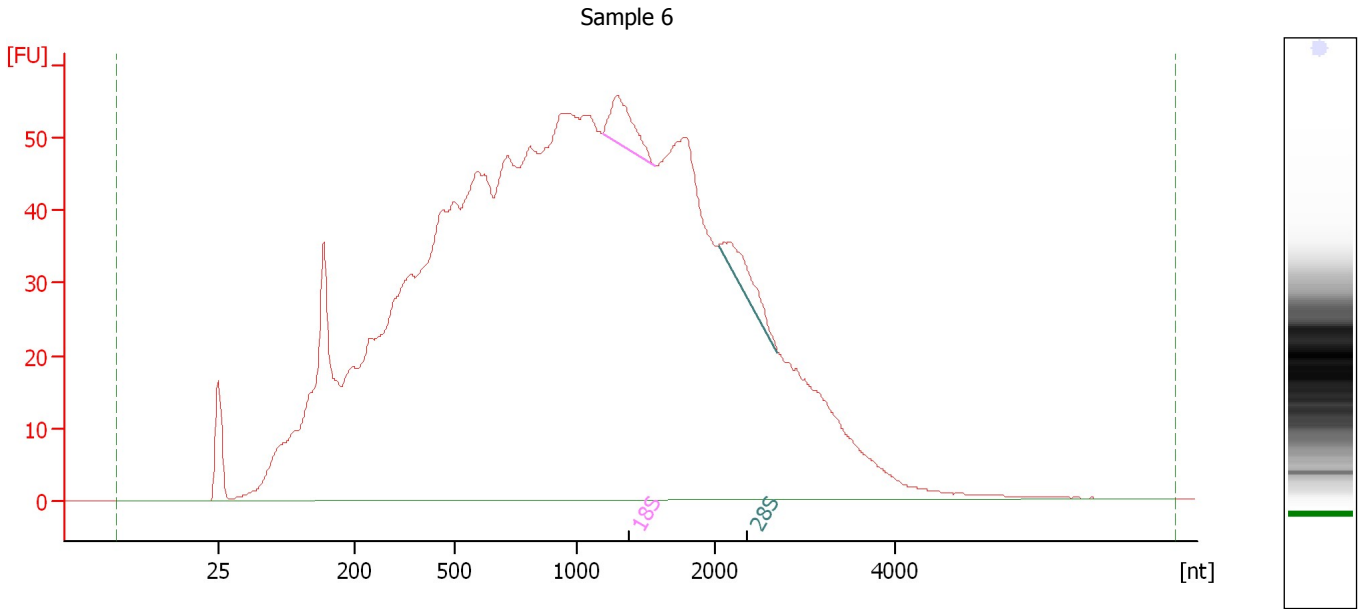
Fragment table for sample 5 : Sample 5

Name	Start Size [nt]	End Size [nt]	Area	% of total Area
18S	1,115	1,542	14.4	0.7
28S	1,969	2,604	13.8	0.7

Assay Class: Eukaryote Total RNA Pico
Data Path: C:\...ents and Settings\Bioanalyzer\2015-06-16\2015-06-16_002.xad

Created: 6/16/2015 1:26:45 PM
Modified: 6/16/2015 1:49:41 PM

Electropherogram Summary Continued ...



Overall Results for sample 6 : Sample 6

RNA Area: 2,345.7 RNA Integrity Number (RIN): 2.4 (B.02.08)
RNA Concentration: 9,095 µg/µl Result Flagging Color:
rRNA Ratio [28s / 18s]: 0.8 Result Flagging Label: RIN: 2.40

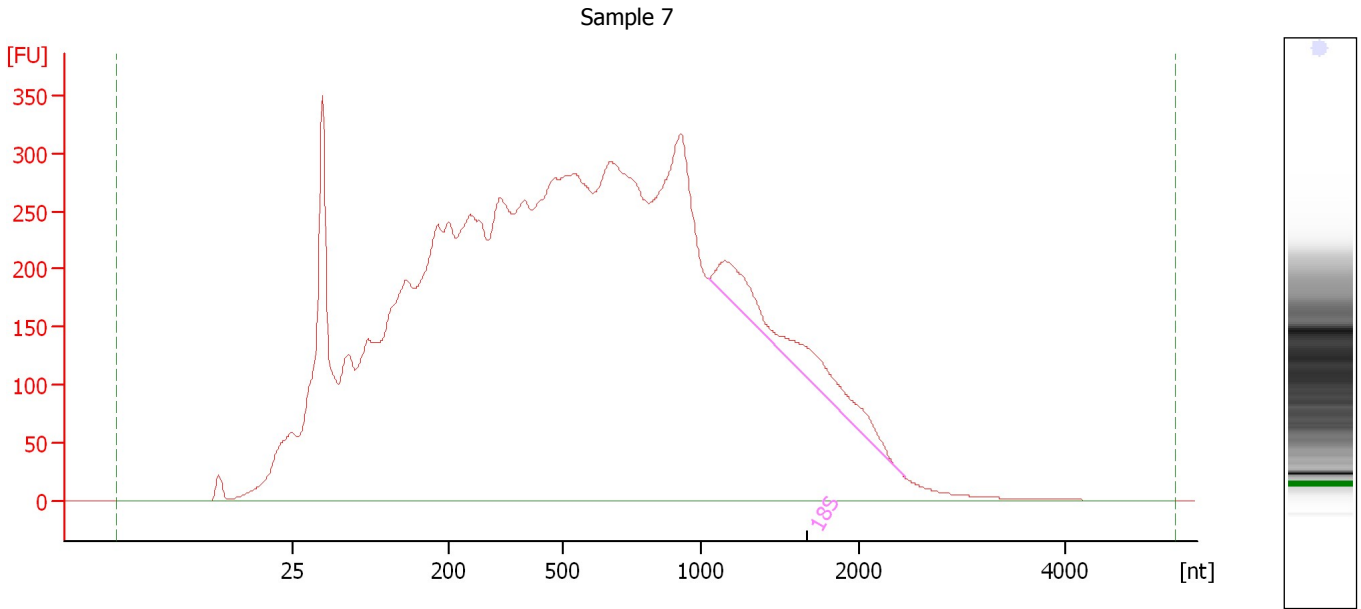
Fragment table for sample 6 : Sample 6

Name	Start Size [nt]	End Size [nt]	Area	% of total Area
18S	1,185	1,564	19.5	0.8
28S	2,043	2,692	14.9	0.6

Assay Class: Eukaryote Total RNA Pico
Data Path: C:\...ents and Settings\Bioanalyzer\2015-06-16\2015-06-16_002.xad

Created: 6/16/2015 1:26:45 PM
Modified: 6/16/2015 1:49:41 PM

Electropherogram Summary Continued ...



Overall Results for sample 7 : Sample 7

RNA Area:	13,716.8	RNA Integrity Number (RIN):	2.3 (B.02.08)
RNA Concentration:	53,184 pg/μl	Result Flagging Color:	
rRNA Ratio [28s / 18s]:	0.0	Result Flagging Label:	RIN: 2.30

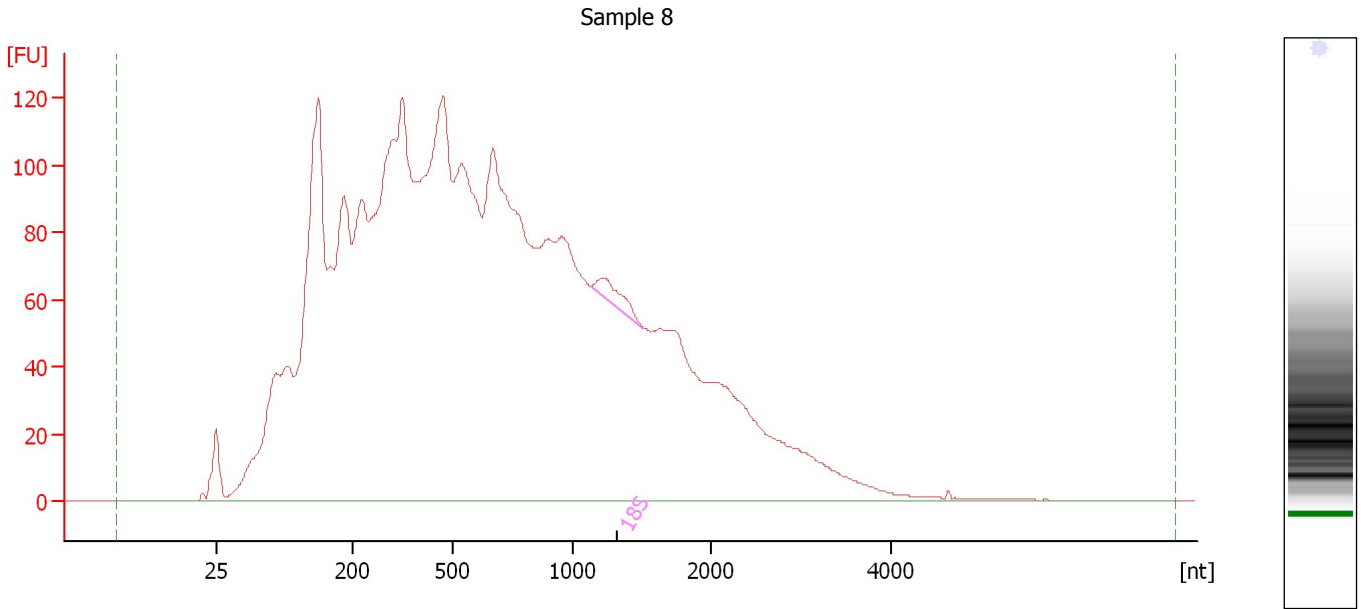
Fragment table for sample 7 : Sample 7

Name	Start Size [nt]	End Size [nt]	Area	% of total Area
18S	1,049	2,440	335.0	2.4

Assay Class: Eukaryote Total RNA Pico
Data Path: C:\...ents and Settings\Bioanalyzer\2015-06-16\2015-06-16_002.xad

Created: 6/16/2015 1:26:45 PM
Modified: 6/16/2015 1:49:41 PM

Electropherogram Summary Continued ...



Overall Results for sample 8 : Sample 8

RNA Area:	4,740.5	RNA Integrity Number (RIN):	2 (B.02.08)
RNA Concentration:	18,380 pg/μl	Result Flagging Color:	
rRNA Ratio [28s / 18s]:	0.0	Result Flagging Label:	RIN:2

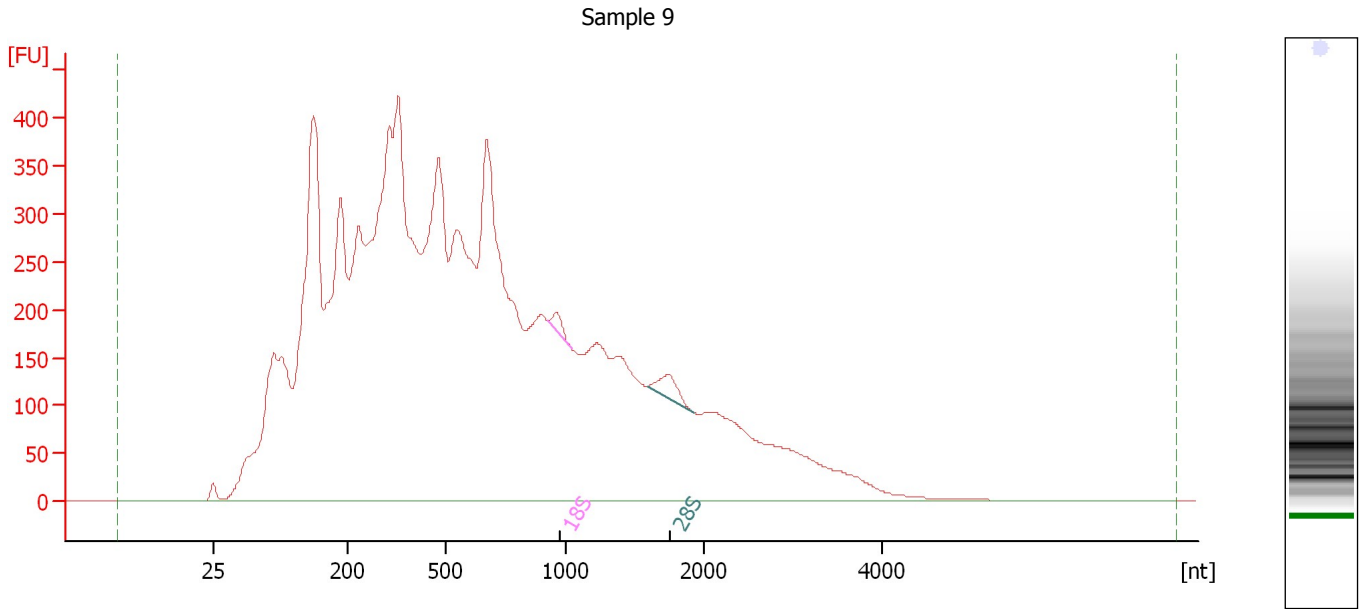
Fragment table for sample 8 : Sample 8

Name	Start Size [nt]	End Size [nt]	Area	% of total Area
18S	1,134	1,515	18.9	0.4

Assay Class: Eukaryote Total RNA Pico
Data Path: C:\...ents and Settings\Bioanalyzer\2015-06-16\2015-06-16_002.xad

Created: 6/16/2015 1:26:45 PM
Modified: 6/16/2015 1:49:41 PM

Electropherogram Summary Continued ...



Overall Results for sample 9 : Sample 9

RNA Area:	13,861.4	RNA Integrity Number (RIN):	2 (B.02.08)
RNA Concentration:	53,745 pg/ μ l	Result Flagging Color:	
rRNA Ratio [28s / 18s]:	2.2	Result Flagging Label:	RIN:2

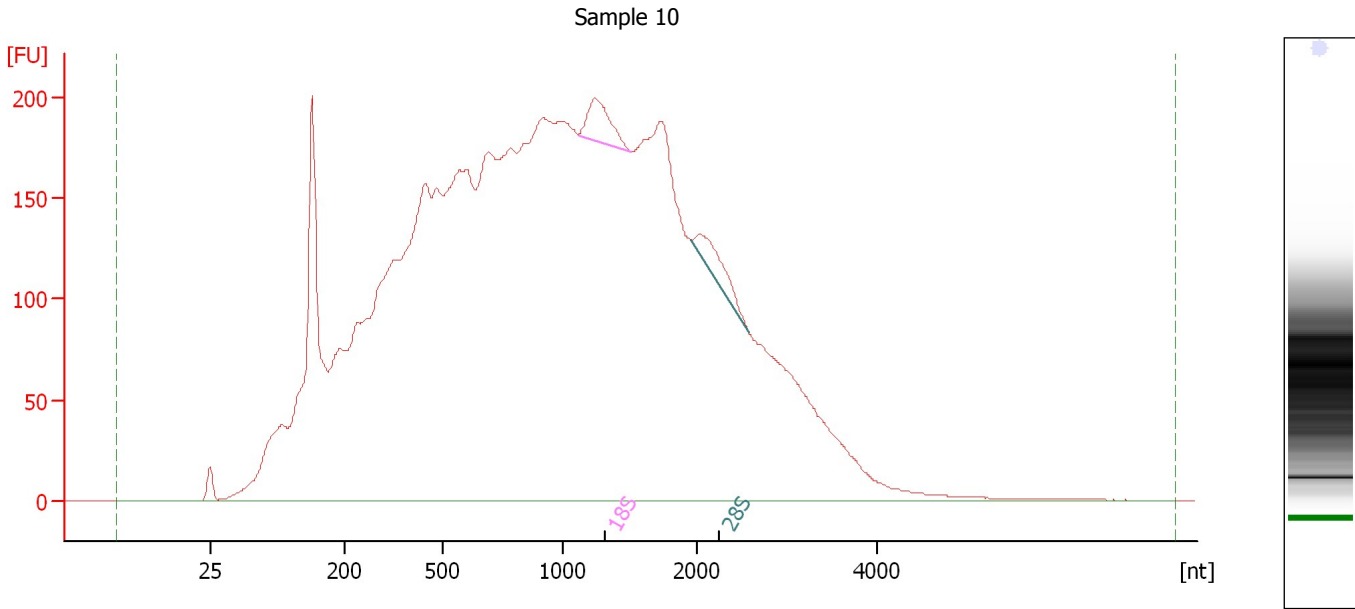
Fragment table for sample 9 : Sample 9

Name	Start Size [nt]	End Size [nt]	Area	% of total Area
18S	924	1,032	25.0	0.2
28S	1,596	1,932	55.5	0.4

Assay Class: Eukaryote Total RNA Pico
Data Path: C:\...ents and Settings\Bioanalyzer\2015-06-16\2015-06-16_002.xad

Created: 6/16/2015 1:26:45 PM
Modified: 6/16/2015 1:49:41 PM

Electropherogram Summary Continued ...



Overall Results for sample 10 : Sample 10

RNA Area: 8,815.0 RNA Integrity Number (RIN): 2.3 (B.02.08)
RNA Concentration: 34,179 pg/μl Result Flagging Color:
rRNA Ratio [28s / 18s]: 0.8 Result Flagging Label: RIN: 2.30

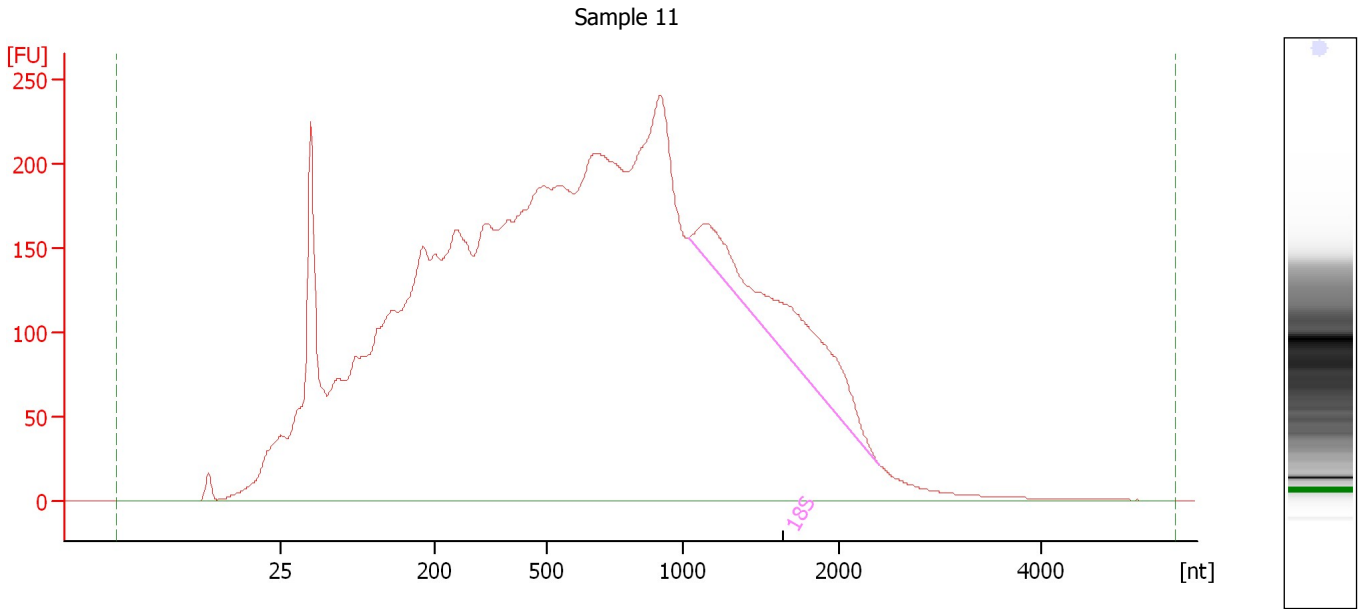
Fragment table for sample 10 : Sample 10

Name	Start Size [nt]	End Size [nt]	Area	% of total Area
18S	1,121	1,507	61.3	0.7
28S	1,955	2,567	48.5	0.6

Assay Class: Eukaryote Total RNA Pico
Data Path: C:\...ents and Settings\Bioanalyzer\2015-06-16\2015-06-16_002.xad

Created: 6/16/2015 1:26:45 PM
Modified: 6/16/2015 1:49:41 PM

Electropherogram Summary Continued ...



Overall Results for sample 11 : Sample 11

RNA Area:	9,603.3	RNA Integrity Number (RIN):	2.6 (B.02.08)
RNA Concentration:	37,235 pg/μl	Result Flagging Color:	
rRNA Ratio [28s / 18s]:	0.0	Result Flagging Label:	RIN: 2.60

Fragment table for sample 11 : Sample 11

Name	Start Size [nt]	End Size [nt]	Area	% of total Area
18S	1,035	2,412	372.4	3.9

Assay Class: Eukaryote Total RNA Pico
Data Path: C:\...ents and Settings\Bioanalyzer\2015-06-16\2015-06-16_002.xad

Created: 6/16/2015 1:26:45 PM
Modified: 6/16/2015 1:49:41 PM

Gel Image

