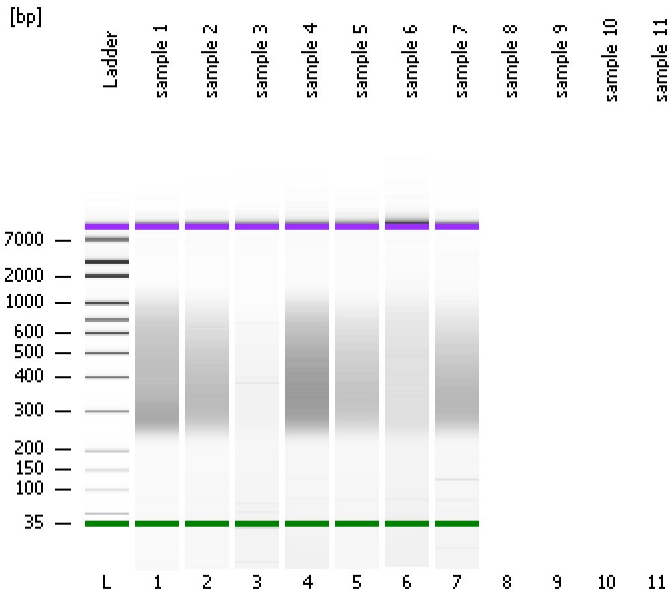


Assay Class: High Sensitivity DNA Assay
Data Path: C:\...ents and Settings\Bioanalyzer\2015-06-19\2015-06-19_001.xad

Created: 6/19/2015 9:13:45 AM
Modified: 6/19/2015 9:43:38 AM

Electrophoresis File Run Summary



Instrument Information:

Instrument Name: DE13701086 Firmware: C.01.069
Serial#: DE13701086 Type: G2938B

Assay Information:

Assay Origin Path: C:\Program Files\Agilent\2100 bioanalyzer\2100 expert\assays\dsDNA\High Sensitivity DNA.xsy
Assay Class: High Sensitivity DNA Assay
Version: 1.03
Assay Comments: Copyright © 2003-2010 Agilent Technologies

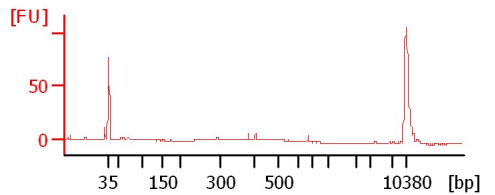
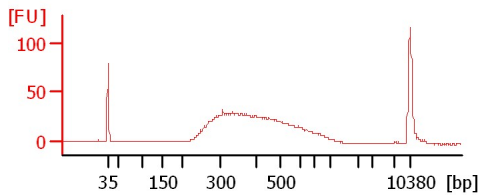
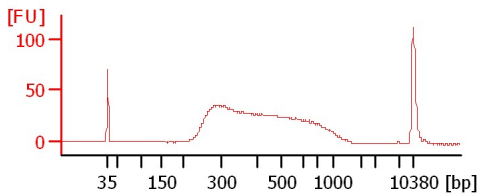
Chip Information:

Chip Lot #: Reagent Kit Lot #: Chip Comments:

sample 1

sample 2

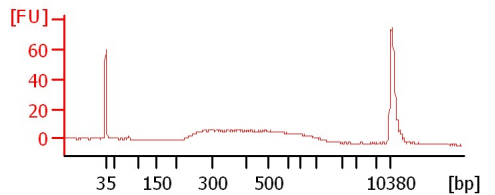
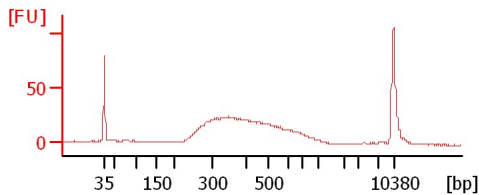
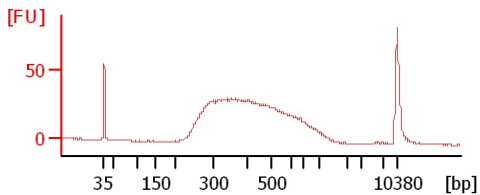
sample 3



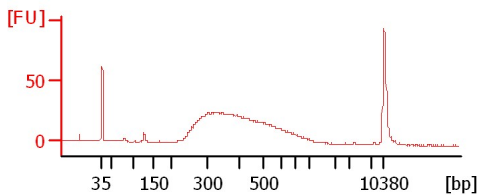
sample 4

sample 5

sample 6



sample 7



Assay Class: High Sensitivity DNA Assay
 Data Path: C:\...ents and Settings\Bioanalyzer\2015-06-19\2015-06-19_001.xad

Created: 6/19/2015 9:13:45 AM
 Modified: 6/19/2015 9:43:38 AM

Electrophoresis File Run Summary (Chip Summary)

Sample Name	Sample Comment	Rest. Digest	Status	Observation	Result Label	Result Color
sample 1		<input type="checkbox"/>	✓			
sample 2		<input type="checkbox"/>	✓			
sample 3		<input type="checkbox"/>	✓			
sample 4		<input type="checkbox"/>	✓			
sample 5		<input type="checkbox"/>	✓			
sample 6		<input type="checkbox"/>	✓			
sample 7		<input type="checkbox"/>	✓			
sample 8		<input type="checkbox"/>				
sample 9		<input type="checkbox"/>				
sample 10		<input type="checkbox"/>				
sample 11		<input type="checkbox"/>				
Ladder		<input type="checkbox"/>	✓			

Chip Lot #

Reagent Kit Lot #

Chip Comments :

Assay Class: High Sensitivity DNA Assay
Data Path: C:\...ents and Settings\Bioanalyzer\2015-06-19\2015-06-19_001.xad

Created: 6/19/2015 9:13:45 AM
Modified: 6/19/2015 9:43:38 AM

Electrophoresis Assay Details

General Analysis Settings

Number of Available Sample and Ladder Wells (Max.) : 12
Minimum Visible Range [s] : 32
Maximum Visible Range [s] : 138
Start Analysis Time Range [s] : 33
End Analysis Time Range [s] : 137.5
Ladder Concentration [pg/μl] : 1950
Uses Standard Area for Ladder Fragments
Lower Marker Concentration [pg/μl] : 125
Upper Marker Concentration [pg/μl] : 75
Used Upper Marker for Quantitation
Standard Curve Fit is Point to Point
Show Data Aligned to Lower and Upper Marker

Integrator Settings

Integration Start Time [s] : 33.05
Integration End Time [s] : 137
Slope Threshold : 0.8
Height Threshold [FU] : 5
Area Threshold : 0.1
Width Threshold [s] : 0.6
Baseline Plateau [s] : 0.5

Filter Settings

Filter Width [s] : 0.5
Polynomial Order : 4

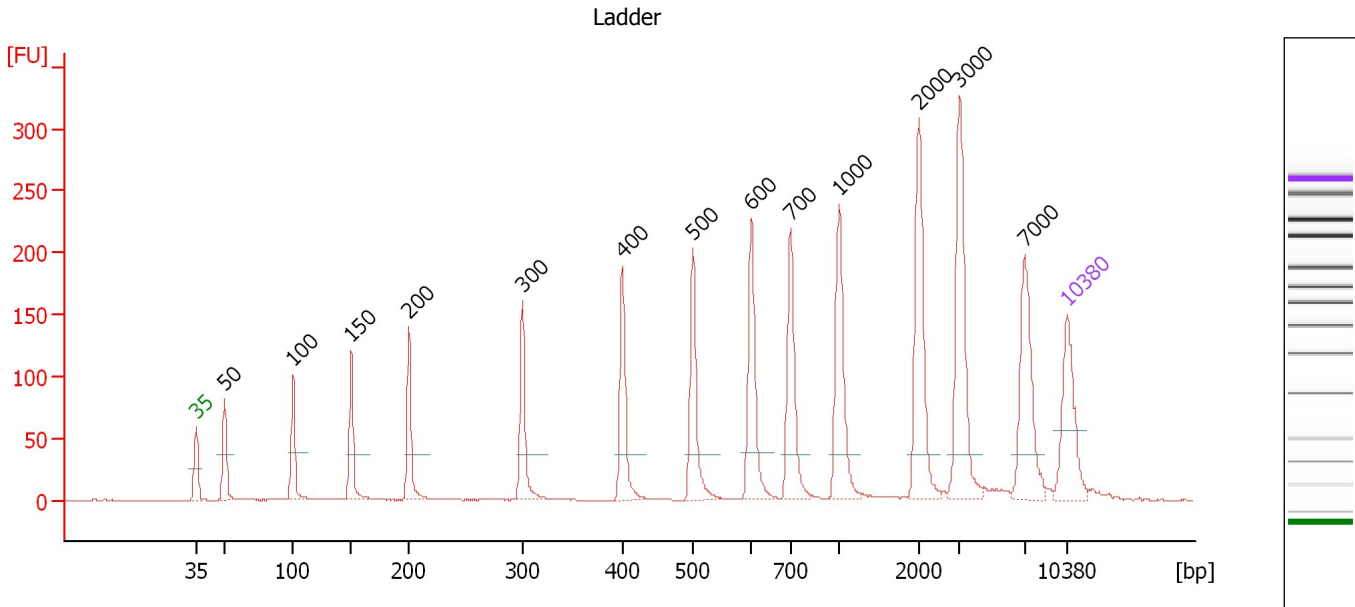
Ladder

Ladder Peak	Size	Area
1	35	160
2	50	210
3	100	208
4	150	221
5	200	242
6	300	270
7	400	305
8	500	306
9	600	336
10	700	321
11	1000	366
12	2000	413
13	3000	411
14	7000	400
15	10380	214

Assay Class: High Sensitivity DNA Assay
 Data Path: C:\...ents and Settings\Bioanalyzer\2015-06-19\2015-06-19_001.xad

Created: 6/19/2015 9:13:45 AM
 Modified: 6/19/2015 9:43:38 AM

Electropherogram Summary



Overall Results for Ladder

Noise: 0.1

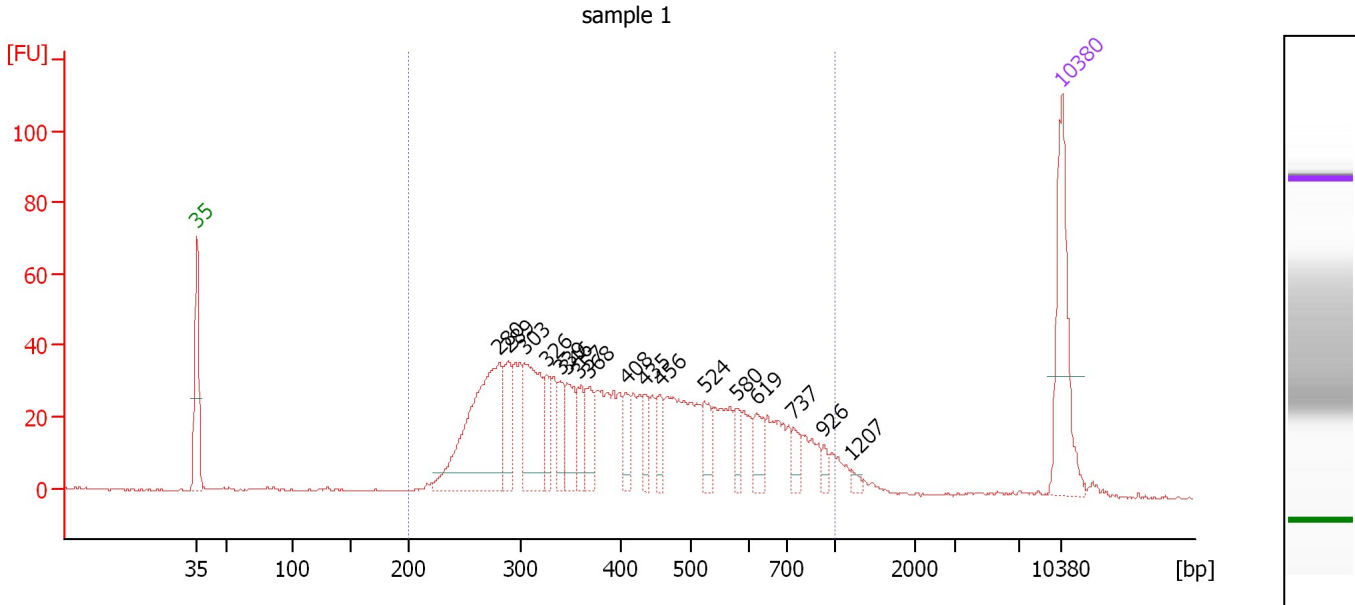
Peak table for Ladder

Peak	Size [bp]	Conc. [pg/μl]	Molarity [pmol/l]	Observations	Aligned Migration Time [s]
1	35	125.00	5,411.3	Lower Marker	43.00
2	50	150.00	4,545.5	Ladder Peak	45.31
3	100	150.00	2,272.7	Ladder Peak	50.80
4	150	150.00	1,515.2	Ladder Peak	55.47
5	200	150.00	1,136.4	Ladder Peak	60.09
6	300	150.00	757.6	Ladder Peak	69.22
7	400	150.00	568.2	Ladder Peak	77.27
8	500	150.00	454.5	Ladder Peak	82.93
9	600	150.00	378.8	Ladder Peak	87.64
10	700	150.00	324.7	Ladder Peak	90.77
11	1,000	150.00	227.3	Ladder Peak	94.66
12	2,000	150.00	113.6	Ladder Peak	101.09
13	3,000	150.00	75.8	Ladder Peak	104.35
14	7,000	150.00	32.5	Ladder Peak	109.57
15	10,380	75.00	10.9	Upper Marker	113.00

Assay Class: High Sensitivity DNA Assay
 Data Path: C:\...ents and Settings\Bioanalyzer\2015-06-19\2015-06-19_001.xad

Created: 6/19/2015 9:13:45 AM
 Modified: 6/19/2015 9:43:38 AM

Electropherogram Summary Continued ...



Overall Results for sample 1 : sample 1

Number of peaks found: 17 Corr. Area 1: 1,117.8
 Noise: 0.3

Peak table for sample 1 : sample 1

Peak	Size [bp]	Conc. [pg/μl]	Molarity [pmol/l]	Observations	Aligned Migration Time [s]
1	35	125.00	5,411.3	Lower Marker	43.00
2	280	200.57	1,083.9		67.43
3	289	43.25	226.8		68.20
4	303	96.87	483.6		69.50
5	326	28.93	134.5		71.31
6	339	28.47	127.1		72.39
7	346	38.76	169.6		72.95
8	357	27.80	118.0		73.81
9	368	30.52	125.5		74.72
10	408	22.10	82.2		77.70
11	435	19.79	68.9		79.25
12	456	20.71	68.8		80.46
13	524	24.10	69.7		84.04
14	580	15.40	40.3		86.67
15	619	21.68	53.1		88.23
16	737	14.85	30.5		91.25
17	926	7.08	11.6		93.71
18	1,207	4.61	5.8		96.00
19	10,380	75.00	10.9	Upper Marker	113.00

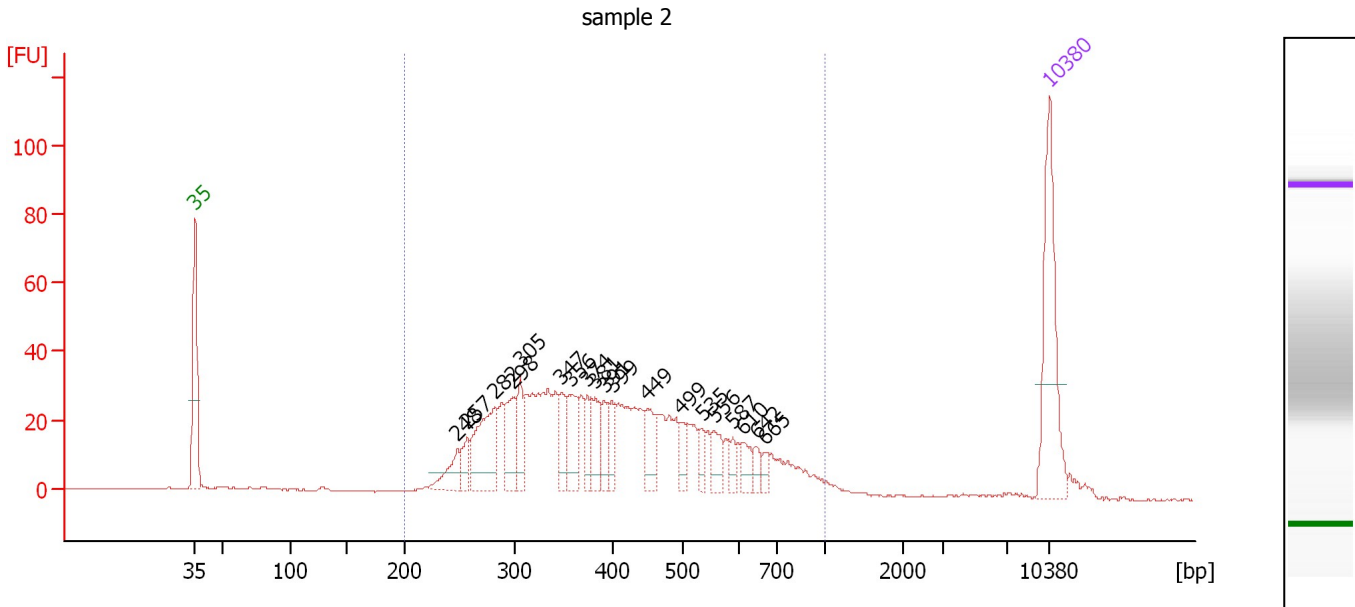
Region table for sample 1 : sample 1

From [bp]	Average Size [bp]	To [bp]	Corr. Area	Molarity [pmol/l]	Co % of lor Total	Size distribution in CV [%]	Conc. [pg/μl]
200	439	1,000	1,117.8	4,656.9	96	37.0	1,141.32

Assay Class: High Sensitivity DNA Assay
 Data Path: C:\...ents and Settings\Bioanalyzer\2015-06-19\2015-06-19_001.xad

Created: 6/19/2015 9:13:45 AM
 Modified: 6/19/2015 9:43:38 AM

Electropherogram Summary Continued ...



Overall Results for sample 2 : sample 2

Number of peaks found: 19 Corr. Area 1: 872.1
 Noise: 0.2

Peak table for sample 2 : sample 2

Peak	Size [bp]	Conc. [pg/μl]	Molarity [pmol/l]	Observations	Aligned Migration Time [s]
1	35	125.00	5,411.3	Lower Marker	43.00
2	248	25.66	156.6		64.50
3	257	17.98	106.0		65.28
4	282	75.03	403.4		67.56
5	298	40.72	207.0		69.04
6	305	28.36	140.7		69.65
7	347	24.55	107.1		73.02
8	356	33.77	143.8		73.72
9	374	20.64	83.7		75.16
10	381	27.21	108.1		75.77
11	391	18.89	73.2		76.56
12	399	18.49	70.2		77.17
13	449	28.32	95.5		80.05
14	499	15.33	46.6		82.85
15	535	11.35	32.2		84.55
16	556	17.92	48.8		85.56
17	587	8.69	22.4		87.04
18	610	12.33	30.6		87.96
19	642	8.69	20.5		88.97
20	665	7.04	16.0		89.67
21	10,380	75.00	10.9	Upper Marker	113.00

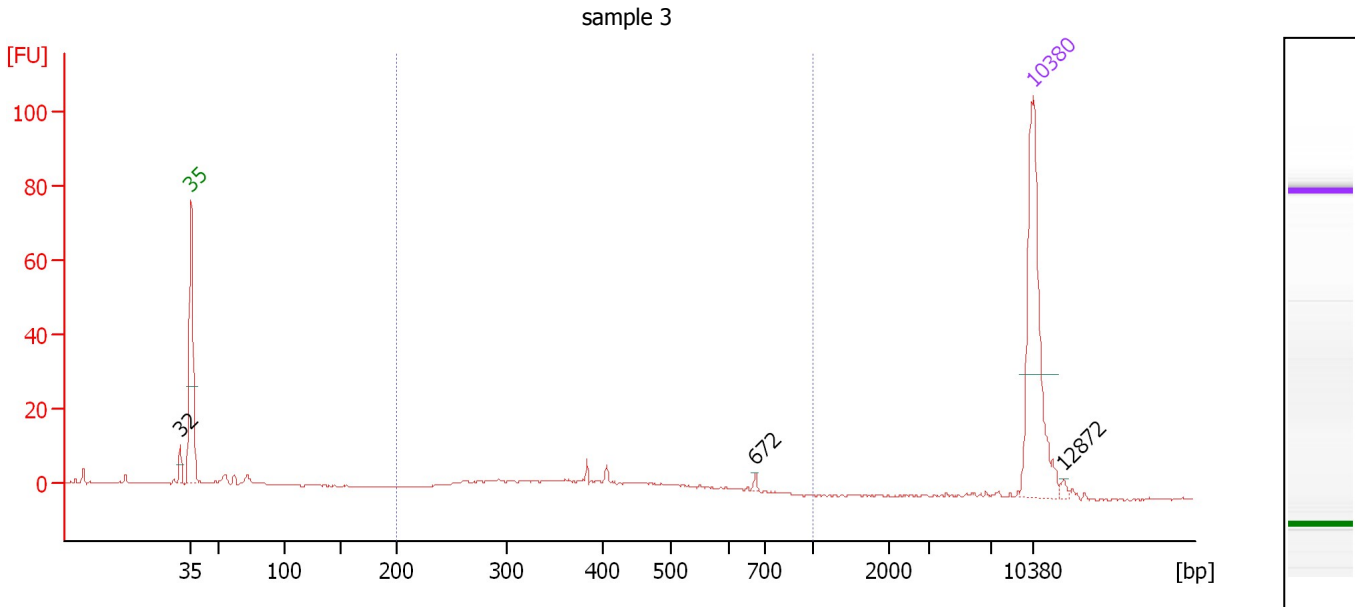
Region table for sample 2 : sample 2

From [bp]	Average Size [bp]	To [bp]	Corr. Area	Molarity [pmol/l]	Co % of Ior Total	Size distribution in CV [%]	Conc. [pg/μl]
200	424	1,000	872.1	3,413.4	97	33.1	835.18

Assay Class: High Sensitivity DNA Assay
 Data Path: C:\...ents and Settings\Bioanalyzer\2015-06-19\2015-06-19_001.xad

Created: 6/19/2015 9:13:45 AM
 Modified: 6/19/2015 9:43:38 AM

Electropherogram Summary Continued ...



Overall Results for sample 3 : sample 3

Number of peaks found: 3 Corr. Area 1: 66.3
 Noise: 0.1

Peak table for sample 3 : sample 3

Peak	Size [bp]	Conc. [pg/μl]	Molarity [pmol/l]	Observations	Aligned Migration Time [s]
1	32	0.00	0.0		42.07
2	35	125.00	5,411.3	Lower Marker	43.00
3	672	1.43	3.2		89.90
4	10,380	75.00	10.9	Upper Marker	113.00
5	12,872	0.00	0.0		115.53

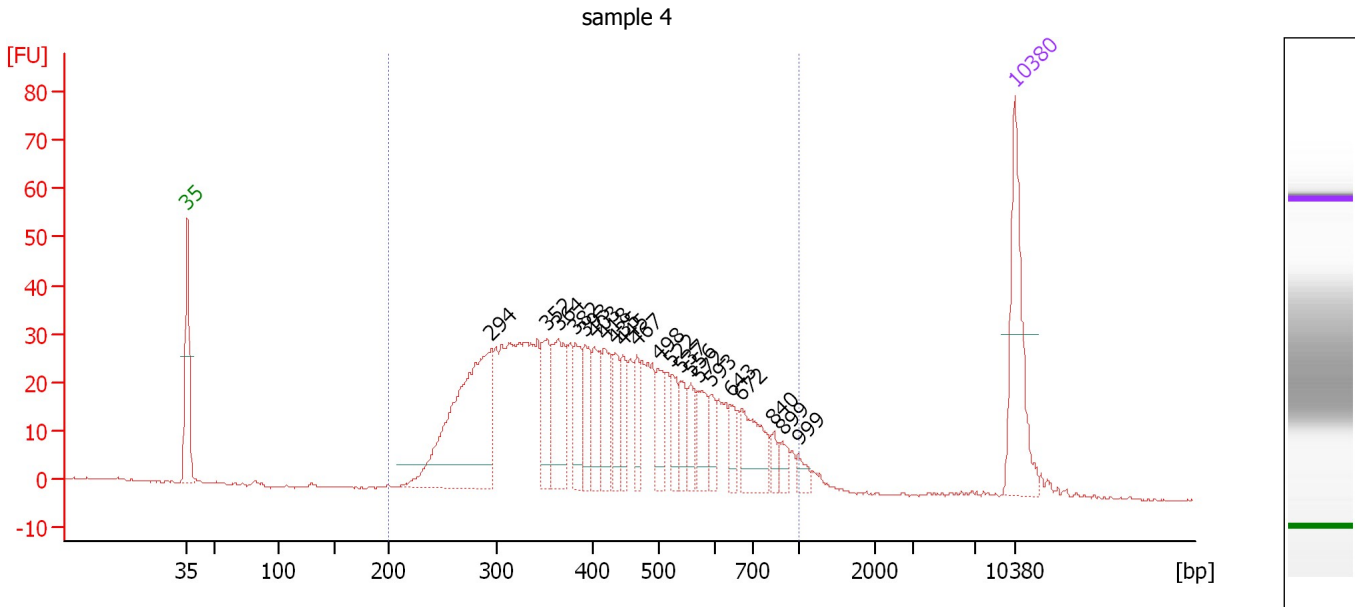
Region table for sample 3 : sample 3

From [bp]	Average Size [bp]	To [bp]	Corr. Area	Molarity [pmol/l]	Co % of lor Total	Size distribution in CV [%]	Conc. [pg/μl]
200	406	1,000	66.3	259.5	72	26.9	62.93

Assay Class: High Sensitivity DNA Assay
 Data Path: C:\...ents and Settings\Bioanalyzer\2015-06-19\2015-06-19_001.xad

Created: 6/19/2015 9:13:45 AM
 Modified: 6/19/2015 9:43:38 AM

Electropherogram Summary Continued ...



Overall Results for sample 4 : sample 4

Number of peaks found: 21 Corr. Area 1: 961.4
 Noise: 0.2

Peak table for sample 4 : sample 4


Peak	Size [bp]	Conc. [pg/μl]	Molarity [pmol/l]	Observations	Aligned Migration Time [s]
1	35	125.00	5,411.3	Lower Marker	43.00
2	294	248.20	1,278.1		68.69
3	352	53.90	232.2		73.38
4	364	75.04	312.3		74.37
5	382	39.09	154.9		75.86
6	393	40.02	154.5		76.67
7	403	36.54	137.4		77.44
8	418	37.97	137.6		78.29
9	435	30.05	104.7		79.24
10	445	26.97	91.8		79.83
11	467	26.29	85.3		81.04
12	498	32.66	99.4		82.80
13	522	27.87	80.9		83.97
14	537	21.34	60.2		84.69
15	556	21.54	58.7		85.55
16	572	26.70	70.7		86.32
17	593	16.11	41.2		87.31
18	643	18.74	44.2		88.98
19	672	49.39	111.4		89.88
20	840	9.31	16.8		92.58
21	899	11.03	18.6		93.35
22	999	9.44	14.3		94.65
23	10,380	75.00	10.9	Upper Marker	113.00

Assay Class: High Sensitivity DNA Assay
Data Path: C:\...ents and Settings\Bioanalyzer\2015-06-19\2015-06-19_001.xad

Created: 6/19/2015 9:13:45 AM
Modified: 6/19/2015 9:43:38 AM

Electropherogram Summary Continued ...

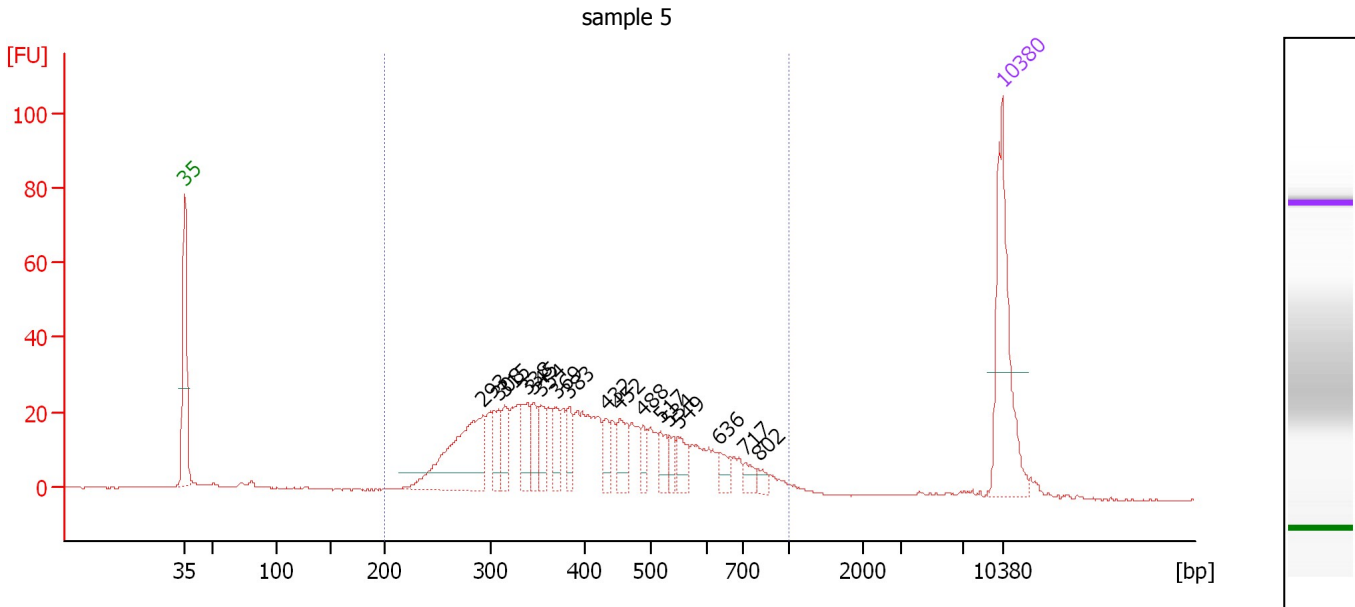
... Region table for sample 4 : sample 4

From [bp]	Average Size [bp]	To [bp]	Corr. Area	Molarity [pmol/l]	Co % of lor Total	Size distribution in CV [%]	Conc. [pg/μl]
200	440	1,000	961.4	5,094.5	 98	34.3	1,278.88

Assay Class: High Sensitivity DNA Assay
 Data Path: C:\...ents and Settings\Bioanalyzer\2015-06-19\2015-06-19_001.xad

Created: 6/19/2015 9:13:45 AM
 Modified: 6/19/2015 9:43:38 AM

Electropherogram Summary Continued ...



Overall Results for sample 5 : sample 5

Number of peaks found: 17 Corr. Area 1: 677.9
 Noise: 0.2

Peak table for sample 5 : sample 5

Peak	Size [bp]	Conc. [pg/μl]	Molarity [pmol/l]	Observations	Aligned Migration Time [s]
1	35	125.00	5,411.3	Lower Marker	43.00
2	293	110.48	571.5		68.57
3	308	25.29	124.5		69.85
4	315	21.31	102.6		70.40
5	338	25.38	113.6		72.32
6	345	19.09	83.8		72.86
7	354	19.76	84.6		73.55
8	369	18.63	76.5		74.78
9	383	17.77	70.2		75.92
10	432	13.73	48.2		79.07
11	452	24.19	81.1		80.21
12	488	11.79	36.6		82.27
13	517	14.12	41.4		83.73
14	534	9.54	27.1		84.51
15	549	16.74	46.2		85.24
16	636	10.06	24.0		88.75
17	717	8.04	17.0		90.99
18	802	6.29	11.9		92.09
19	10,380	75.00	10.9	Upper Marker	113.00

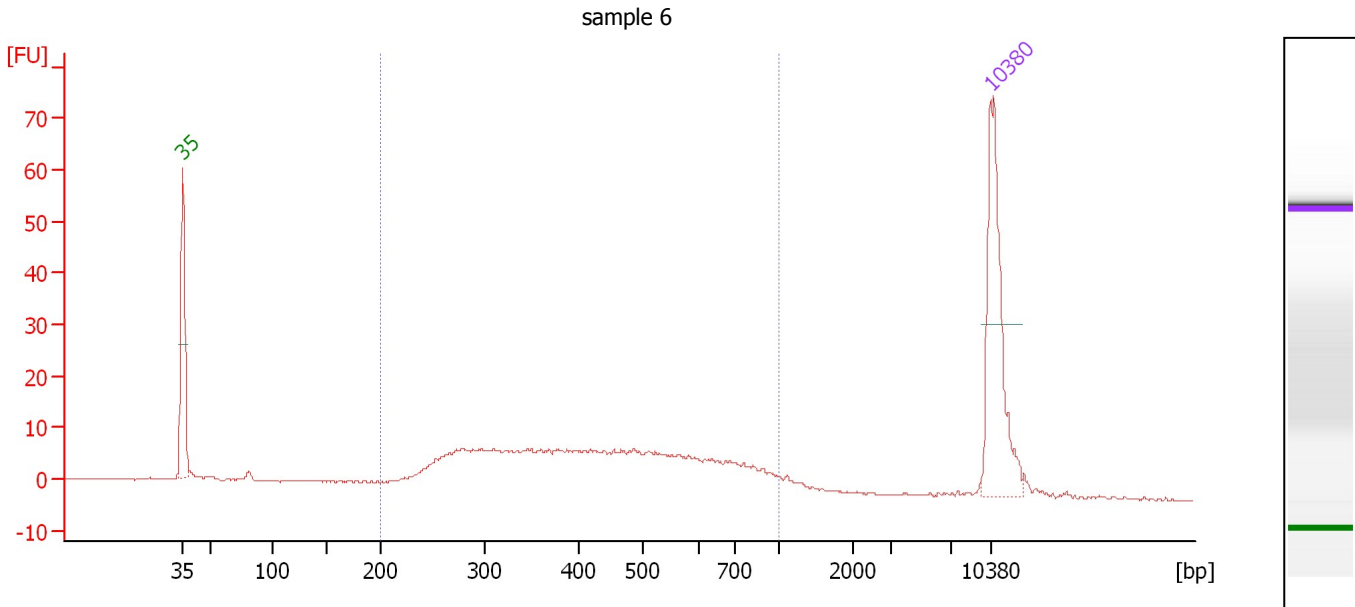
Region table for sample 5 : sample 5

From [bp]	Average Size [bp]	To [bp]	Corr. Area	Molarity [pmol/l]	Co % of Ior Total	Size distribution in CV [%]	Conc. [pg/μl]
200	427	1,000	677.9	2,597.4	94	33.0	642.02

Assay Class: High Sensitivity DNA Assay
 Data Path: C:\...ents and Settings\Bioanalyzer\2015-06-19\2015-06-19_001.xad

Created: 6/19/2015 9:13:45 AM
 Modified: 6/19/2015 9:43:38 AM

Electropherogram Summary Continued ...



Overall Results for sample 6 : sample 6

Number of peaks found: 0 Corr. Area 1: 273.3
 Noise: 0.2

Peak table for sample 6 : sample 6

Peak	Size [bp]	Conc. [pg/μl]	Molarity [pmol/l]	Observations	Aligned Migration Time [s]
1	35	125.00	5,411.3	Lower Marker	43.00
2	10,380	75.00	10.9	Upper Marker	113.00

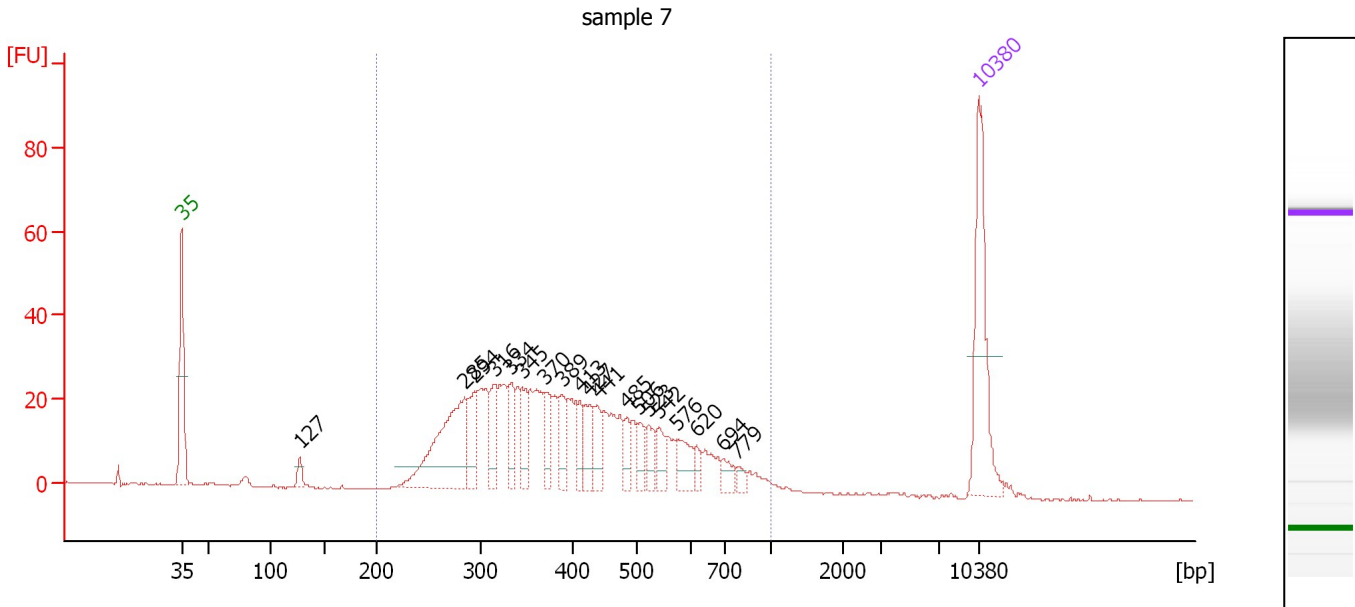
Region table for sample 6 : sample 6

From [bp]	Average Size [bp]	To [bp]	Corr. Area	Molarity [pmol/l]	Co % of Ior Total	Size distribution in CV [%]	Conc. [pg/μl]
200	454	1,000	273.3	1,200.0	87	36.8	301.51

Assay Class: High Sensitivity DNA Assay
 Data Path: C:\...ents and Settings\Bioanalyzer\2015-06-19\2015-06-19_001.xad

Created: 6/19/2015 9:13:45 AM
 Modified: 6/19/2015 9:43:38 AM

Electropherogram Summary Continued ...



Overall Results for sample 7 : sample 7

Number of peaks found: 19 Corr. Area 1: 686.0
 Noise: 0.2

Peak table for sample 7 : sample 7

Peak	Size [bp]	Conc. [pg/μl]	Molarity [pmol/l]	Observations	Aligned Migration Time [s]
1	35	125.00	5,411.3	Lower Marker	43.00
2	127	10.54	125.4		53.35
3	285	131.06	696.4		67.86
4	294	35.04	180.3		68.71
5	316	31.90	153.1		70.48
6	334	27.12	123.1		71.94
7	345	29.33	128.6		72.87
8	370	23.10	94.5		74.89
9	389	27.79	108.3		76.38
10	413	19.34	70.9		78.02
11	427	24.13	85.5		78.82
12	441	23.36	80.3		79.57
13	485	14.92	46.6		82.10
14	506	14.58	43.6		83.22
15	523	17.30	50.1		84.02
16	542	16.06	44.9		84.91
17	576	23.30	61.3		86.50
18	620	7.65	18.7		88.28
19	694	9.89	21.6		90.57
20	779	5.52	10.7		91.79
21	10,380	75.00	10.9	Upper Marker	113.00

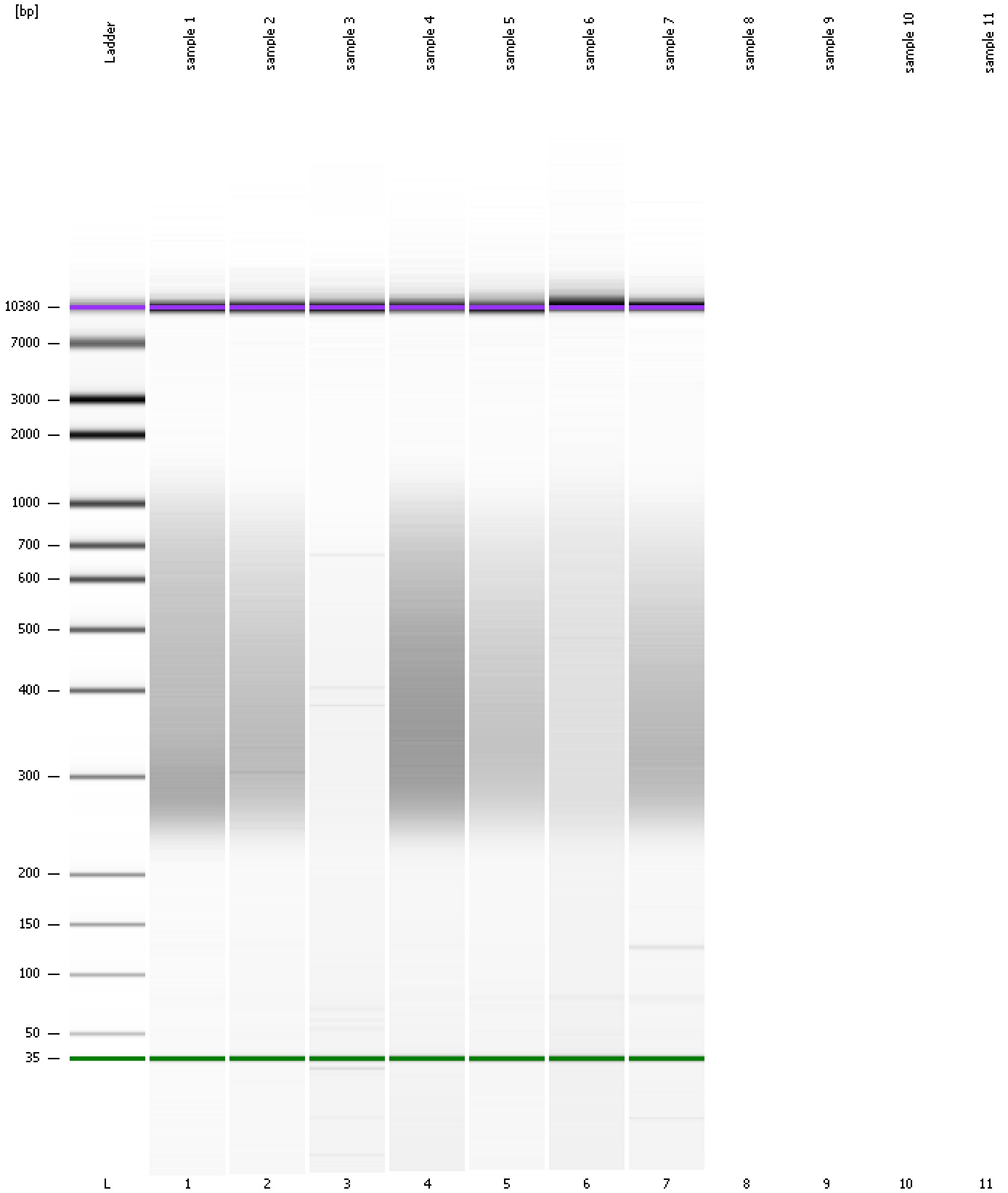
Region table for sample 7 : sample 7

From [bp]	Average Size [bp]	To [bp]	Corr. Area	Molarity [pmol/l]	Co % of lor Total	Size distribution in CV [%]	Conc. [pg/μl]
200	419	1,000	686.0	3,376.4	97	32.5	823.46

Assay Class: High Sensitivity DNA Assay
Data Path: C:\...ents and Settings\Bioanalyzer\2015-06-19\2015-06-19_001.xad

Created: 6/19/2015 9:13:45 AM
Modified: 6/19/2015 9:43:38 AM

Gel Image



Assay Class: High Sensitivity DNA Assay
Data Path: C:\...ents and Settings\Bioanalyzer\2015-06-19\2015-06-19_001.xad

Created: 6/19/2015 9:13:45 AM
Modified: 6/19/2015 9:43:38 AM

Invalid Samples

Sample 8 has not been run, no results available.

Sample 9 has not been run, no results available.

Sample 10 has not been run, no results available.

Sample 11 has not been run, no results available.