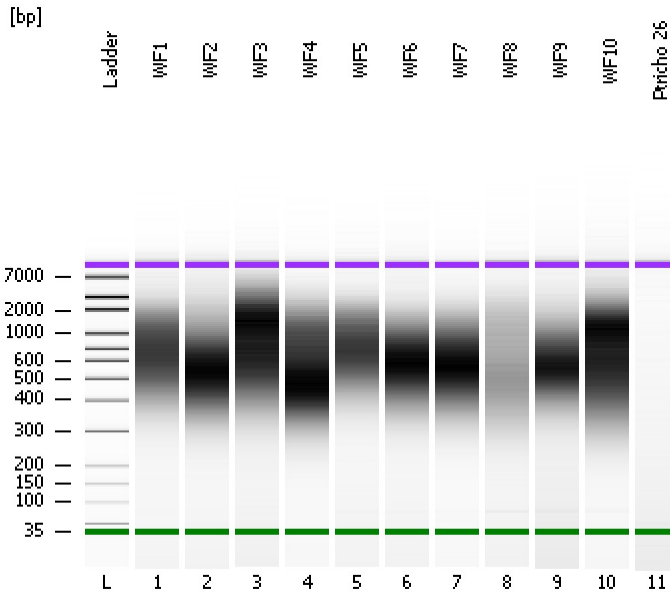


Assay Class: High Sensitivity DNA Assay
Data Path: C:\...ents and Settings\Bioanalyzer\2015-07-01\2015-07-01_002.xad

Created: 7/1/2015 1:17:40 PM
Modified: 7/1/2015 1:58:07 PM

Electrophoresis File Run Summary



Instrument Information:

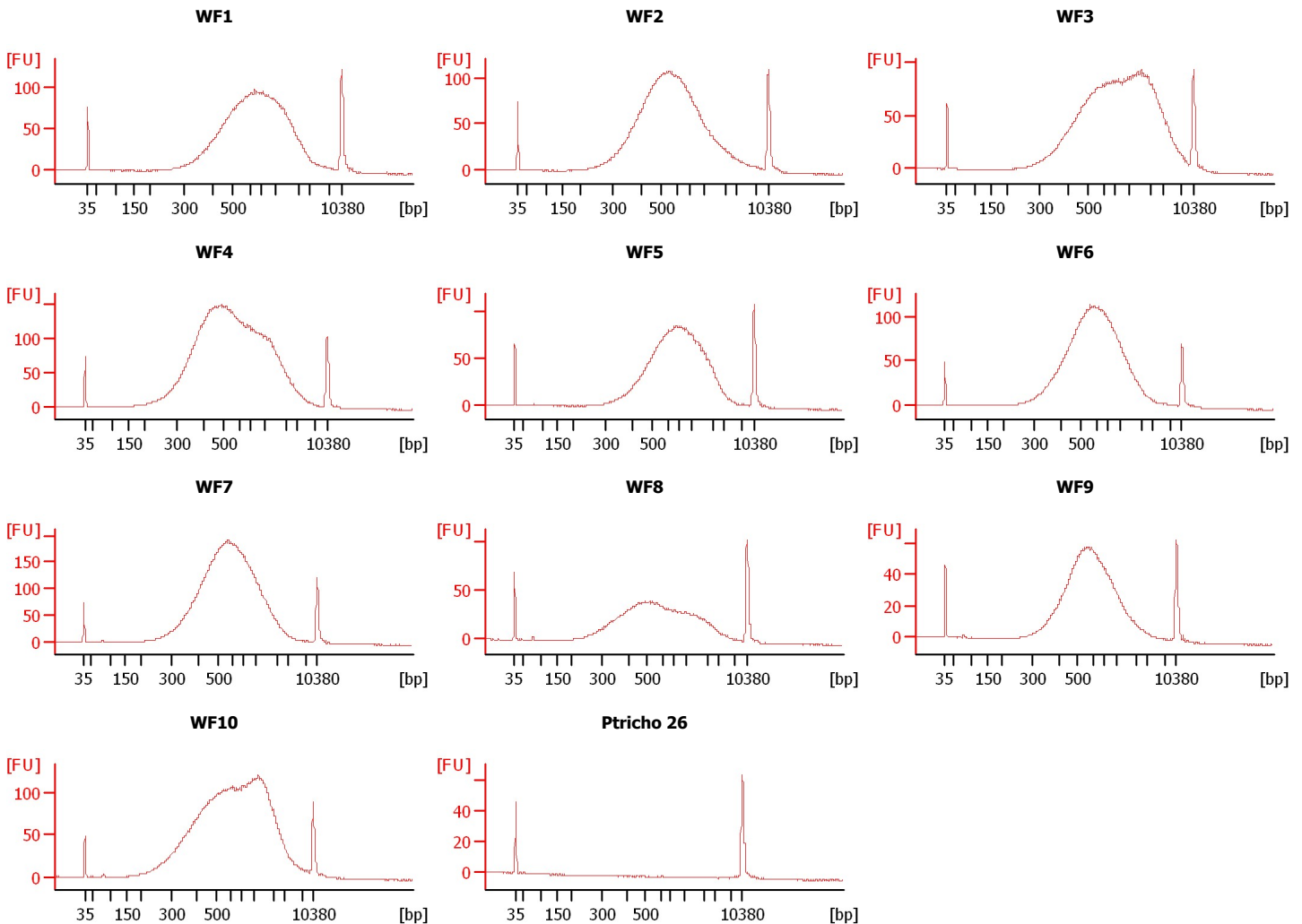
Instrument Name: DE13701086 Firmware: C.01.069
Serial#: DE13701086 Type: G2938B

Assay Information:

Assay Origin Path: C:\Program Files\Agilent\2100 bioanalyzer\2100 expert\assays\dsDNA\High Sensitivity DNA.xsy
Assay Class: High Sensitivity DNA Assay
Version: 1.03
Assay Comments: Copyright © 2003-2010 Agilent Technologies

Chip Information:

Chip Lot #: Reagent Kit Lot #: Chip Comments:



Assay Class: High Sensitivity DNA Assay
 Data Path: C:\...ents and Settings\Bioanalyzer\2015-07-01\2015-07-01_002.xad

Created: 7/1/2015 1:17:40 PM
 Modified: 7/1/2015 1:58:07 PM

Electrophoresis File Run Summary (Chip Summary)

Sample Name	Sample Comment	Rest. Digest	Status	Observation	Result Label	Result Color
WF1		<input type="checkbox"/>	✓			
WF2		<input type="checkbox"/>	✓			
WF3		<input type="checkbox"/>	✓			
WF4		<input type="checkbox"/>	✓			
WF5		<input type="checkbox"/>	✓			
WF6		<input type="checkbox"/>	✓			
WF7		<input type="checkbox"/>	✓			
WF8		<input type="checkbox"/>	✓			
WF9		<input type="checkbox"/>	✓			
WF10		<input type="checkbox"/>	✓			
Ptricho 26		<input type="checkbox"/>	✓			
Ladder		<input type="checkbox"/>	✓			

Chip Lot #

Reagent Kit Lot #

Chip Comments :

Assay Class: High Sensitivity DNA Assay
Data Path: C:\...ents and Settings\Bioanalyzer\2015-07-01\2015-07-01_002.xad

Created: 7/1/2015 1:17:40 PM
Modified: 7/1/2015 1:58:07 PM

Electrophoresis Assay Details

General Analysis Settings

Number of Available Sample and Ladder Wells (Max.) : 12
Minimum Visible Range [s] : 32
Maximum Visible Range [s] : 138
Start Analysis Time Range [s] : 33
End Analysis Time Range [s] : 137.5
Ladder Concentration [pg/μl] : 1950
Uses Standard Area for Ladder Fragments
Lower Marker Concentration [pg/μl] : 125
Upper Marker Concentration [pg/μl] : 75
Used Upper Marker for Quantitation
Standard Curve Fit is Point to Point
Show Data Aligned to Lower and Upper Marker

Integrator Settings

Integration Start Time [s] : 33.05
Integration End Time [s] : 137
Slope Threshold : 0.8
Height Threshold [FU] : 5
Area Threshold : 0.1
Width Threshold [s] : 0.6
Baseline Plateau [s] : 0.5

Filter Settings

Filter Width [s] : 0.5
Polynomial Order : 4

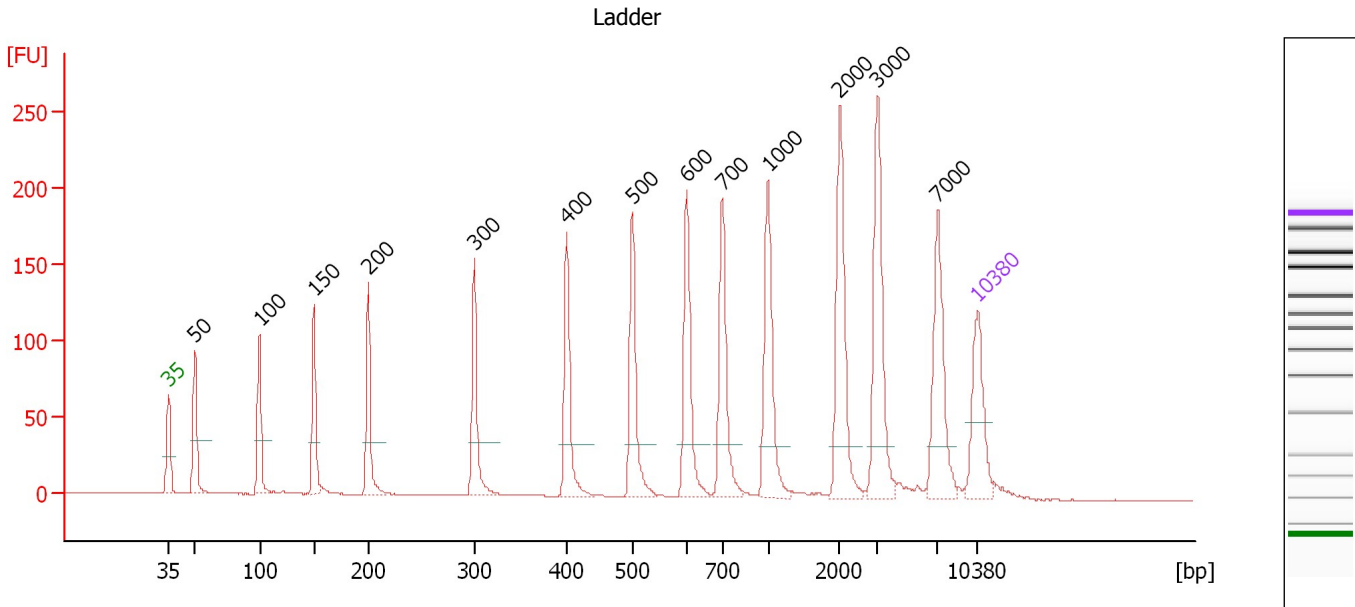
Ladder

Ladder Peak	Size	Area
1	35	160
2	50	210
3	100	208
4	150	221
5	200	242
6	300	270
7	400	305
8	500	306
9	600	336
10	700	321
11	1000	366
12	2000	413
13	3000	411
14	7000	400
15	10380	214

Assay Class: High Sensitivity DNA Assay
 Data Path: C:\...ents and Settings\Bioanalyzer\2015-07-01\2015-07-01_002.xad

Created: 7/1/2015 1:17:40 PM
 Modified: 7/1/2015 1:58:07 PM

Electropherogram Summary



Overall Results for Ladder

Noise: 0.2

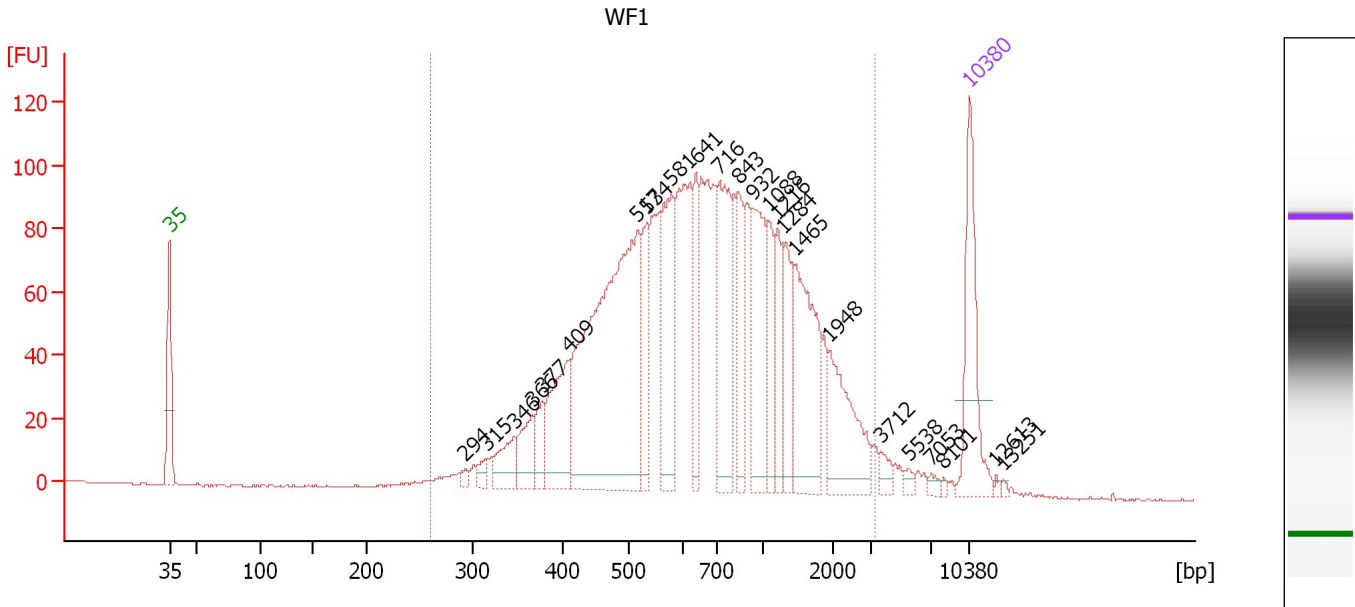
Peak table for Ladder

Peak	Size [bp]	Conc. [pg/μl]	Molarity [pmol/l]	Observations	Aligned Migration Time [s]
1	35	125.00	5,411.3	Lower Marker	43.00
2	50	150.00	4,545.5	Ladder Peak	45.31
3	100	150.00	2,272.7	Ladder Peak	50.89
4	150	150.00	1,515.2	Ladder Peak	55.59
5	200	150.00	1,136.4	Ladder Peak	60.29
6	300	150.00	757.6	Ladder Peak	69.47
7	400	150.00	568.2	Ladder Peak	77.45
8	500	150.00	454.5	Ladder Peak	83.12
9	600	150.00	378.8	Ladder Peak	87.82
10	700	150.00	324.7	Ladder Peak	90.91
11	1,000	150.00	227.3	Ladder Peak	94.88
12	2,000	150.00	113.6	Ladder Peak	101.06
13	3,000	150.00	75.8	Ladder Peak	104.33
14	7,000	150.00	32.5	Ladder Peak	109.54
15	10,380	75.00	10.9	Upper Marker	113.00

Assay Class: High Sensitivity DNA Assay
 Data Path: C:\...ents and Settings\Bioanalyzer\2015-07-01\2015-07-01_002.xad

Created: 7/1/2015 1:17:40 PM
 Modified: 7/1/2015 1:58:07 PM

Electropherogram Summary Continued ...



Overall Results for sample 1 : WF1

Number of peaks found: 24 Corr. Area 1: 2,472.9
 Noise: 0.2

Peak table for sample 1 : WF1

Peak	Size [bp]	Conc. [pg/μl]	Molarity [pmol/l]	Observations	Aligned Migration Time [s]
1	35	125.00	5,411.3	Lower Marker	43.00
2	294	5.33	27.5		68.88
3	315	10.43	50.1		70.70
4	346	35.65	155.9		73.17
5	366	39.38	163.1		74.71
6	377	29.99	120.4		75.64
7	409	91.95	340.3		77.98
8	517	403.98	1,184.8		83.90
9	534	60.34	171.1		84.74
10	581	103.06	268.7		86.93
11	641	56.32	133.2		89.08
12	716	117.90	249.4		91.13
13	843	56.90	102.2		92.81
14	932	99.08	161.2		93.97
15	1,088	46.04	64.1		95.42
16	1,216	37.51	46.7		96.21
17	1,284	58.77	69.4		96.63
18	1,465	110.33	114.1		97.75
19	1,948	75.53	58.8		100.73
20	3,712	9.25	3.8		105.26
21	5,538	4.79	1.3		107.64
22	7,053	4.19	0.9		109.60
23	8,101	1.86	0.3		110.67
24	10,380	75.00	10.9	Upper Marker	113.00
25	12,613	0.00	0.0		115.29


Assay Class: High Sensitivity DNA Assay
Data Path: C:\...ents and Settings\Bioanalyzer\2015-07-01\2015-07-01_002.xad

Created: 7/1/2015 1:17:40 PM
Modified: 7/1/2015 1:58:07 PM

Electropherogram Summary Continued ...**... Peak table for sample 1 : WF1**

Peak	Size [bp]	Conc. [pg/μl]	Molarity [pmol/l]	Observations	Aligned Migration Time [s]
26	13,251	0.00	0.0		115.94

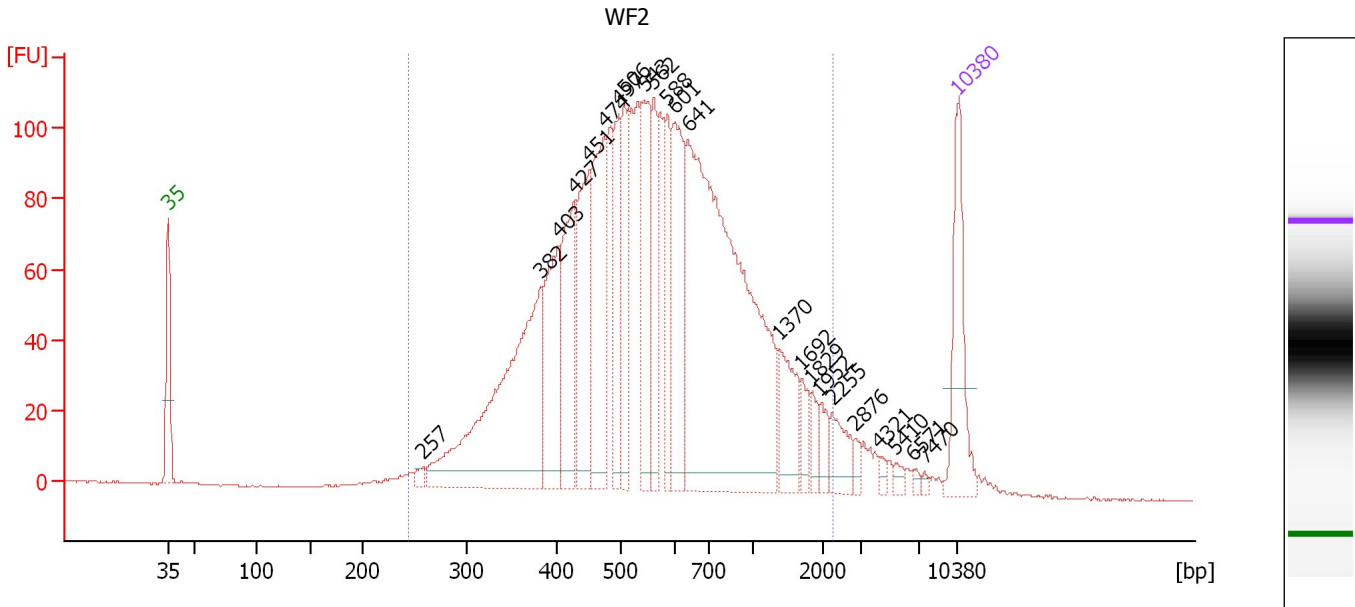
Region table for sample 1 : WF1

From [bp]	Average Size [bp]	To [bp]	Corr. Area	Molarity [pmol/l]	Co % of lor Total	Size distribution in CV [%]	Conc. [pg/μl]
260	858	3,351	2,472.9	4,876.4	 97	62.2	1,971.26

Assay Class: High Sensitivity DNA Assay
 Data Path: C:\...ents and Settings\Bioanalyzer\2015-07-01\2015-07-01_002.xad

Created: 7/1/2015 1:17:40 PM
 Modified: 7/1/2015 1:58:07 PM

Electropherogram Summary Continued ...



Overall Results for sample 2 : WF2

Number of peaks found: 23 Corr. Area 1: 2,703.2
 Noise: 0.2

Peak table for sample 2 : WF2


Peak	Size [bp]	Conc. [pg/μl]	Molarity [pmol/l]	Observations	Aligned Migration Time [s]
1	35	125.00	5,411.3	Lower Marker	43.00
2	257	7.87	46.3		65.55
3	382	340.35	1,348.7		76.04
4	403	125.24	471.3		77.60
5	427	128.87	457.5		78.97
6	451	134.24	451.0		80.34
7	474	157.07	501.7		81.66
8	497	87.26	266.1		82.94
9	506	76.84	230.0		83.41
10	543	108.47	302.4		85.16
11	562	71.51	193.0		86.01
12	588	66.24	170.8		87.24
13	601	126.86	319.8		87.85
14	641	585.09	1,383.4		89.08
15	1,370	53.36	59.0		97.17
16	1,692	19.41	17.4		99.15
17	1,829	15.84	13.1		100.00
18	1,952	15.32	11.9		100.76
19	2,255	28.51	19.2		101.89
20	2,876	7.45	3.9		103.93
21	4,321	4.71	1.6		106.05
22	5,410	5.84	1.6		107.47
23	6,571	3.70	0.9		108.98
24	7,470	2.90	0.6		110.02
25	10,380	75.00	10.9	Upper Marker	113.00

Assay Class: High Sensitivity DNA Assay
Data Path: C:\...ents and Settings\Bioanalyzer\2015-07-01\2015-07-01_002.xad

Created: 7/1/2015 1:17:40 PM
Modified: 7/1/2015 1:58:07 PM

Electropherogram Summary Continued ...

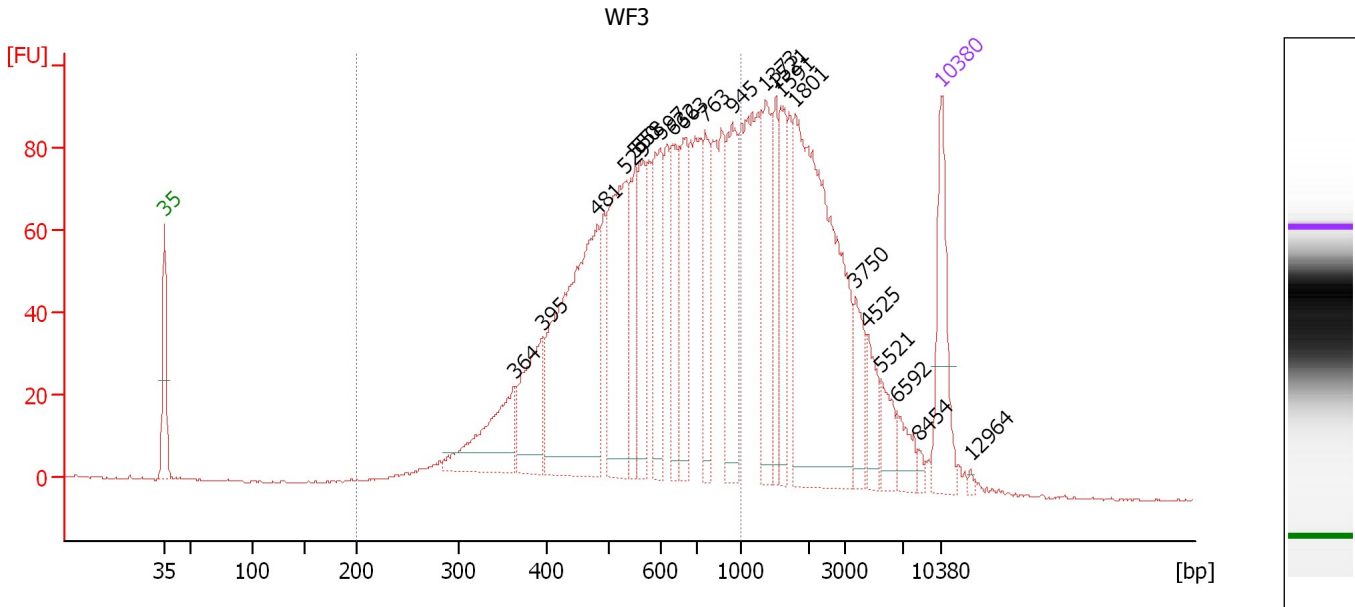
... Region table for sample 2 : WF2

From [bp]	Average Size [bp]	To [bp]	Corr. Area	Molarity [pmol/l]	Co % of lor Total	Size distribution in CV [%]	Conc. [pg/μl]
243	654	2,266	2,703.2	7,135.5	 95	54.0	2,427.04

Assay Class: High Sensitivity DNA Assay
 Data Path: C:\...ents and Settings\Bioanalyzer\2015-07-01\2015-07-01_002.xad

Created: 7/1/2015 1:17:40 PM
 Modified: 7/1/2015 1:58:07 PM

Electropherogram Summary Continued ...



Overall Results for sample 3 : WF3

Number of peaks found: 21 Corr. Area 1: 1,769.4
 Noise: 0.2


Peak table for sample 3 : WF3

Peak	Size [bp]	Conc. [pg/μl]	Molarity [pmol/l]	Observations	Aligned Migration Time [s]
1	35	125.00	5,411.3	Lower Marker	43.00
2	364	109.49	456.3		74.54
3	395	103.63	397.6		77.04
4	481	343.67	1,082.7		82.04
5	529	180.31	516.3		84.49
6	550	79.07	218.0		85.45
7	558	76.55	207.9		85.84
8	597	93.50	237.4		87.66
9	632	81.29	194.8		88.82
10	663	77.95	178.0		89.78
11	763	76.16	151.1		91.75
12	945	105.12	168.5		94.15
13	1,373	84.84	93.6		97.18
14	1,521	53.70	53.5		98.10
15	1,591	56.98	54.3		98.53
16	1,801	343.58	289.1		99.83
17	3,750	39.31	15.9		105.31
18	4,525	32.11	10.8		106.32
19	5,521	26.23	7.2		107.62
20	6,592	23.13	5.3		109.01
21	8,454	5.04	0.9		111.03
22	10,380	75.00	10.9	Upper Marker	113.00
23	12,964	0.00	0.0		115.64

Assay Class: High Sensitivity DNA Assay
Data Path: C:\...ents and Settings\Bioanalyzer\2015-07-01\2015-07-01_002.xad

Created: 7/1/2015 1:17:40 PM
Modified: 7/1/2015 1:58:07 PM

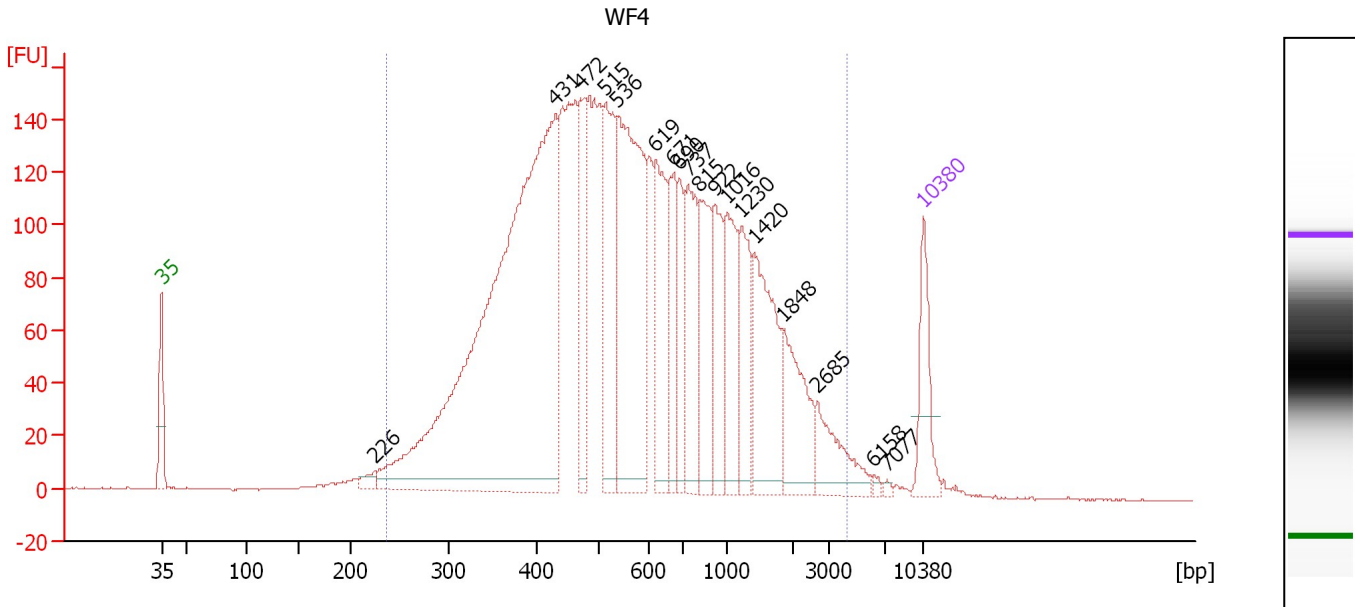
Electropherogram Summary Continued ...**... Region table for sample 3 : WF3**

From [bp]	Average Size [bp]	To [bp]	Corr. Area	Molarity [pmol/l]	Co % of lor Total	Size distribution in CV [%]	Conc. [pg/μl]
200	592	1,000	1,769.4	5,651.7	 63	29.6	1,942.65

Assay Class: High Sensitivity DNA Assay
 Data Path: C:\...ents and Settings\Bioanalyzer\2015-07-01\2015-07-01_002.xad

Created: 7/1/2015 1:17:40 PM
 Modified: 7/1/2015 1:58:07 PM

Electropherogram Summary Continued ...



Overall Results for sample 4 : WF4

Number of peaks found: 18 Corr. Area 1: 4,537.1
 Noise: 0.2

Peak table for sample 4 : WF4

Peak	Size [bp]	Conc. [pg/μl]	Molarity [pmol/l]	Observations	Aligned Migration Time [s]
1	35	125.00	5,411.3	Lower Marker	43.00
2	226	19.64	131.9		62.64
3	431	1,409.74	4,956.8		79.20
4	472	166.38	533.7		81.55
5	515	218.60	643.6		83.80
6	536	476.02	1,344.4		84.83
7	619	175.79	430.3		88.41
8	671	113.27	255.7		90.03
9	690	91.54	200.9		90.61
10	737	162.00	333.2		91.40
11	815	149.48	278.0		92.43
12	922	115.56	189.9		93.85
13	1,016	135.97	202.9		94.97
14	1,230	104.92	129.3		96.30
15	1,420	188.82	201.5		97.47
16	1,848	119.61	98.1		100.12
17	2,685	76.65	43.2		103.30
18	6,158	4.64	1.1		108.44
19	7,077	3.68	0.8		109.62
20	10,380	75.00	10.9	Upper Marker	113.00

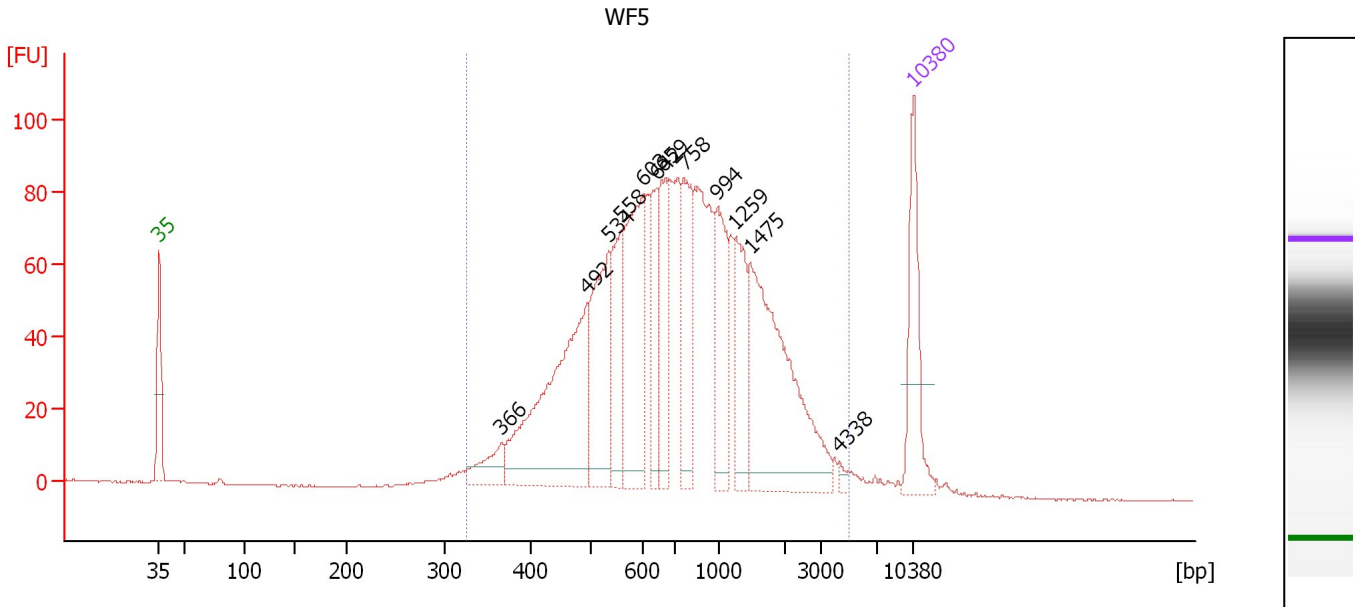
Region table for sample 4 : WF4

From [bp]	Average Size [bp]	To [bp]	Corr. Area	Molarity [pmol/l]	Co % of lor Total	Size distribution in CV [%]	Conc. [pg/μl]
237	748	4,294	4,537.1	13,696.4	97	75.1	4,590.68

Assay Class: High Sensitivity DNA Assay
 Data Path: C:\...ents and Settings\Bioanalyzer\2015-07-01\2015-07-01_002.xad

Created: 7/1/2015 1:17:40 PM
 Modified: 7/1/2015 1:58:07 PM

Electropherogram Summary Continued ...



Overall Results for sample 5 : WF5

Number of peaks found: 12 Corr. Area 1: 1,908.7
 Noise: 0.2

Peak table for sample 5 : WF5

Peak	Size [bp]	Conc. [pg/μl]	Molarity [pmol/l]	Observations	Aligned Migration Time [s]
1	35	125.00	5,411.3	Lower Marker	43.00
2	366	38.70	160.3		74.71
3	492	280.78	864.4		82.67
4	534	132.52	376.2		84.70
5	558	89.93	244.2		85.84
6	603	172.94	434.5		87.92
7	642	71.27	168.3		89.11
8	659	78.25	179.9		89.65
9	758	106.30	212.5		91.68
10	994	95.67	145.9		94.80
11	1,259	75.48	90.9		96.48
12	1,475	233.19	239.5		97.81
13	4,338	5.09	1.8		106.07
14	10,380	75.00	10.9	Upper Marker	113.00

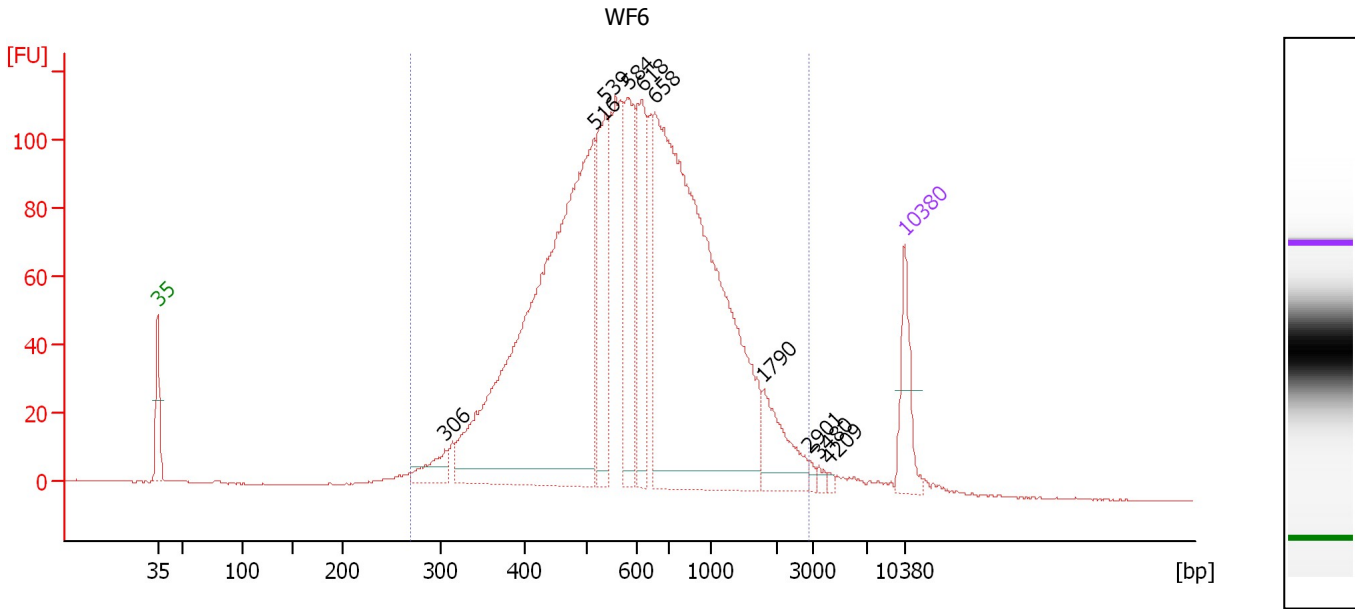
Region table for sample 5 : WF5

From [bp]	Average Size [bp]	To [bp]	Corr. Area	Molarity [pmol/l]	Co % of Ior Total	Size distribution in CV [%]	Conc. [pg/μl]
325	956	5,057	1,908.7	3,959.1	98	67.9	1,760.08

Assay Class: High Sensitivity DNA Assay
 Data Path: C:\...ents and Settings\Bioanalyzer\2015-07-01\2015-07-01_002.xad

Created: 7/1/2015 1:17:40 PM
 Modified: 7/1/2015 1:58:07 PM

Electropherogram Summary Continued ...



Overall Results for sample 6 : WF6

Number of peaks found: 10 Corr. Area 1: 2,554.3
 Noise: 0.2

Peak table for sample 6 : WF6

Peak	Size [bp]	Conc. [pg/μl]	Molarity [pmol/l]	Observations	Aligned Migration Time [s]
1	35	125.00	5,411.3	Lower Marker	43.00
2	306	51.40	254.7		69.93
3	516	1,263.90	3,711.3		83.87
4	539	218.27	613.1		84.97
5	584	207.99	539.6		87.07
6	618	200.84	492.7		88.37
7	658	1,185.90	2,730.4		89.62
8	1,790	92.76	78.5		99.76
9	2,901	6.92	3.6		104.01
10	3,480	7.25	3.2		104.96
11	4,209	4.02	1.4		105.91
12	10,380	75.00	10.9	Upper Marker	113.00

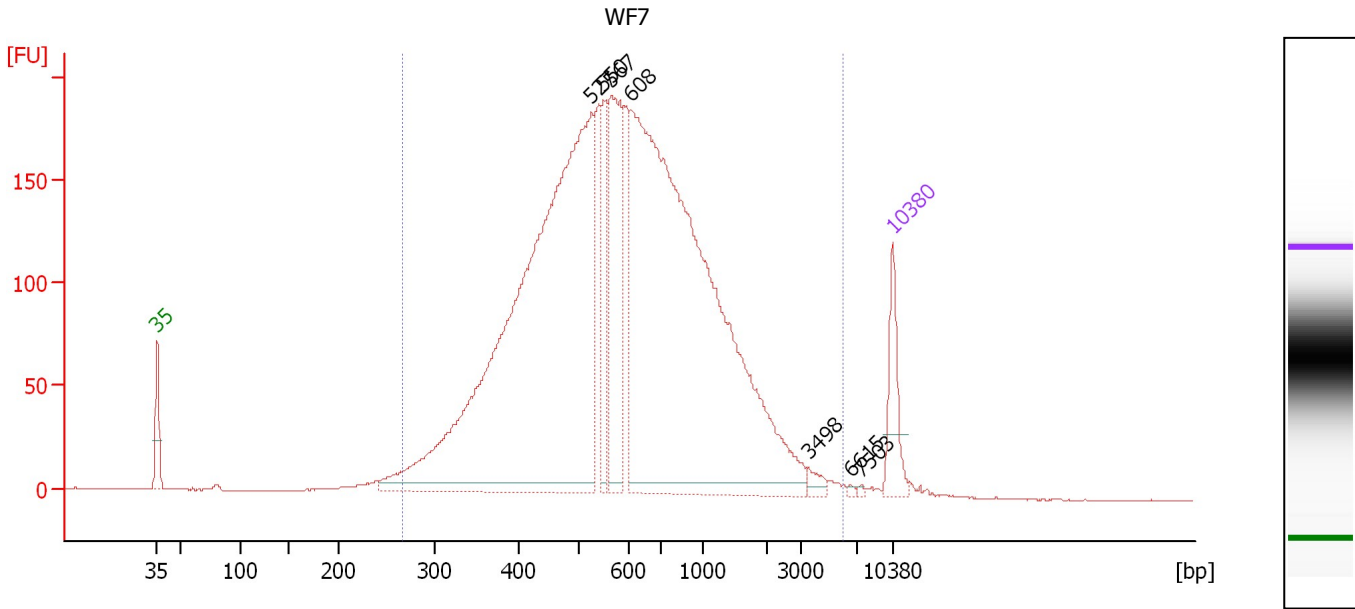
Region table for sample 6 : WF6

From [bp]	Average Size [bp]	To [bp]	Corr. Area	Molarity [pmol/l]	Co % of Ior Total	Size distribution in CV [%]	Conc. [pg/μl]
270	718	2,894	2,554.3	9,992.0	97	56.4	3,695.33

Assay Class: High Sensitivity DNA Assay
 Data Path: C:\...ents and Settings\Bioanalyzer\2015-07-01\2015-07-01_002.xad

Created: 7/1/2015 1:17:40 PM
 Modified: 7/1/2015 1:58:07 PM

Electropherogram Summary Continued ...



Overall Results for sample 7 : WF7

Number of peaks found: 7 Corr. Area 1: 4,553.3
 Noise: 0.2

Peak table for sample 7 : WF7

Peak	Size [bp]	Conc. [pg/μl]	Molarity [pmol/l]	Observations	Aligned Migration Time [s]
1	35	125.00	5,411.3	Lower Marker	43.00
2	527	1,797.79	5,172.5		84.37
3	550	142.26	391.6		85.49
4	567	299.97	802.2		86.25
5	608	1,732.23	4,315.2		88.08
6	3,498	15.56	6.7		104.98
7	6,615	3.30	0.8		109.04
8	7,503	2.80	0.6		110.06
9	10,380	75.00	10.9	Upper Marker	113.00

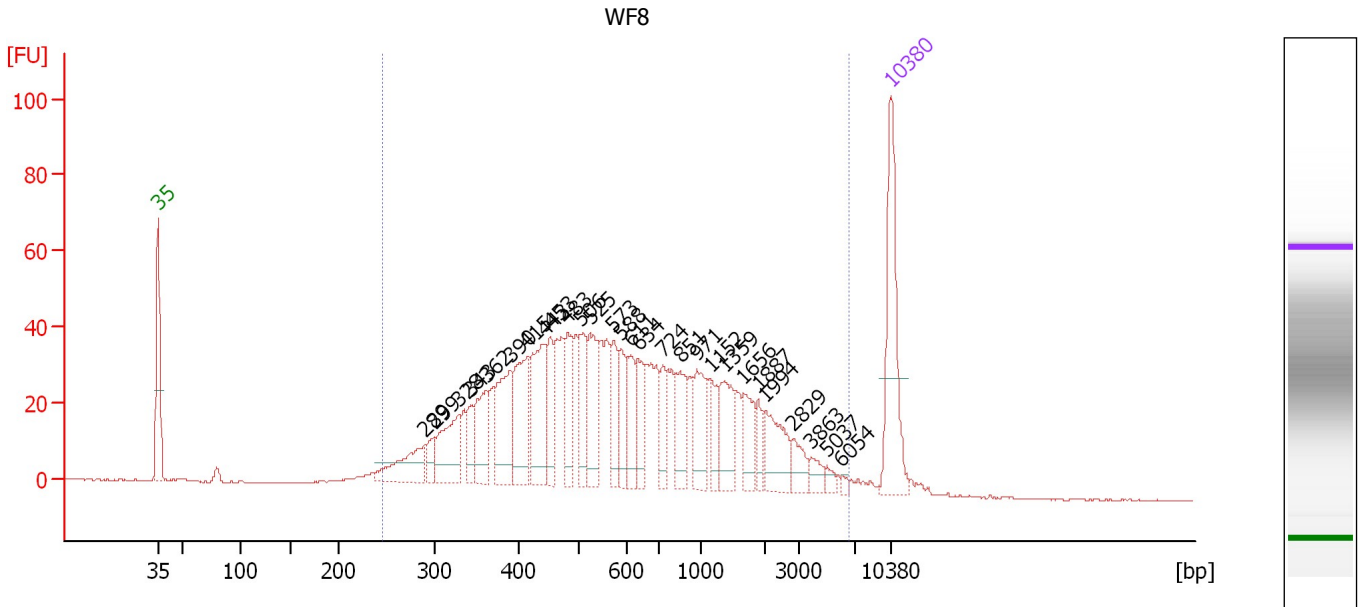
Region table for sample 7 : WF7

From [bp]	Average Size [bp]	To [bp]	Corr. Area	Molarity [pmol/l]	Co % of Ior Total	Size distribution in CV [%]	Conc. [pg/μl]
267	750	6,013	4,553.3	11,861.8	98	74.6	4,294.13

Assay Class: High Sensitivity DNA Assay
 Data Path: C:\...ents and Settings\Bioanalyzer\2015-07-01\2015-07-01_002.xad

Created: 7/1/2015 1:17:40 PM
 Modified: 7/1/2015 1:58:07 PM

Electropherogram Summary Continued ...



Overall Results for sample 8 : WF8

Number of peaks found: 28 Corr. Area 1: 1,303.6
 Noise: 0.2

Peak table for sample 8 : WF8

Peak	Size [bp]	Conc. [pg/μl]	Molarity [pmol/l]	Observations	Aligned Migration Time [s]
1	35	125.00	5,411.3	Lower Marker	43.00
2	289	49.40	259.2		68.44
3	299	13.86	70.3		69.36
4	328	58.21	268.9		71.70
5	343	20.98	92.7		72.88
6	362	47.54	199.1		74.41
7	390	68.51	266.2		76.65
8	415	69.33	253.3		78.28
9	443	75.37	258.0		79.86
10	453	33.26	111.2		80.47
11	483	41.73	130.9		82.16
12	506	41.20	123.5		83.38
13	525	49.24	142.1		84.30
14	573	28.40	75.1		86.54
15	588	28.43	73.3		87.25
16	611	30.76	76.2		88.17
17	634	29.95	71.5		88.88
18	724	24.66	51.6		91.23
19	851	37.60	66.9		92.91
20	971	36.60	57.1		94.49
21	1,152	20.82	27.4		95.82
22	1,359	33.35	37.2		97.09
23	1,656	25.72	23.5		98.93
24	1,887	11.85	9.5		100.36
25	1,994	35.36	26.9		101.02

Assay Class: High Sensitivity DNA Assay
 Data Path: C:\...ents and Settings\Bioanalyzer\2015-07-01\2015-07-01_002.xad

Created: 7/1/2015 1:17:40 PM
 Modified: 7/1/2015 1:58:07 PM

Electropherogram Summary Continued ...

... Peak table for sample 8 : WF8

Peak	Size [bp]	Conc. [pg/μl]	Molarity [pmol/l]	Observations	Aligned Migration Time [s]
26	2,829	14.70	7.9		103.77
27	3,863	8.83	3.5		105.45
28	5,037	5.07	1.5		106.98
29	6,054	2.73	0.7		108.31
30	10,380	75.00	10.9	Upper Marker	113.00

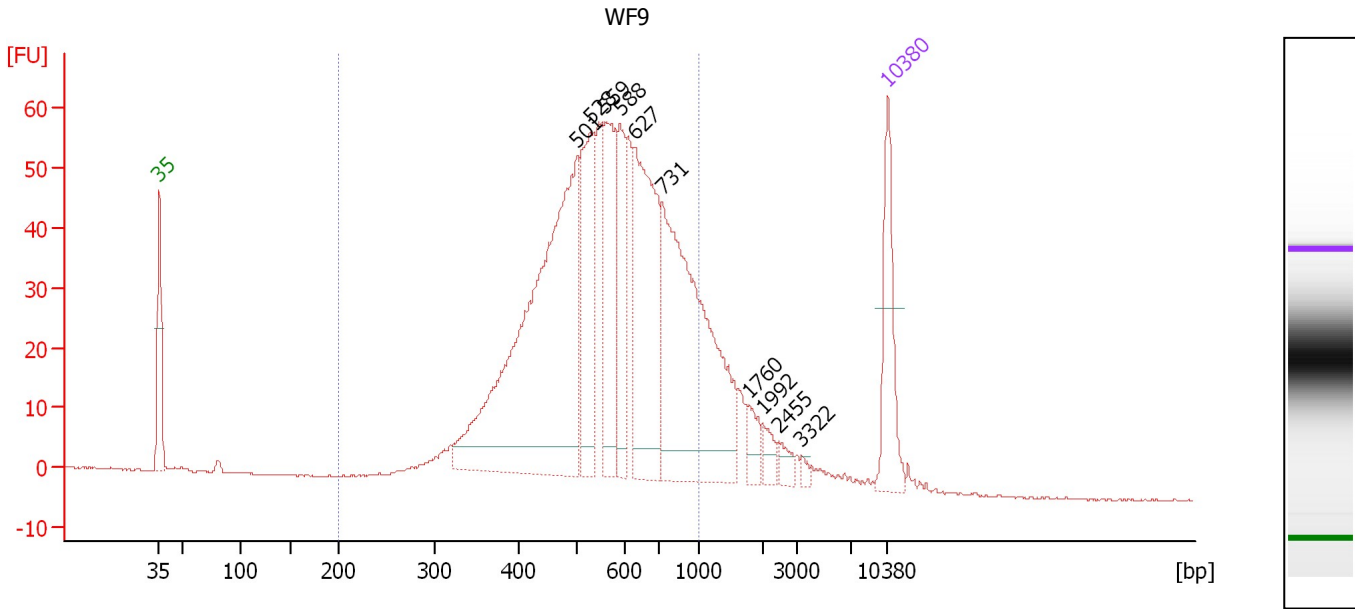
Region table for sample 8 : WF8

From [bp]	Average Size [bp]	To [bp]	Corr. Area	Molarity [pmol/l]	Co % of lor Total	Size distribution in CV [%]	Conc. [pg/μl]
245	889	6,638	1,303.6	3,782.8	97	97.8	1,294.63

Assay Class: High Sensitivity DNA Assay
 Data Path: C:\...ents and Settings\Bioanalyzer\2015-07-01\2015-07-01_002.xad

Created: 7/1/2015 1:17:40 PM
 Modified: 7/1/2015 1:58:07 PM

Electropherogram Summary Continued ...



Overall Results for sample 9 : WF9

Number of peaks found: 10 Corr. Area 1: 1,089.2
 Noise: 0.1

Peak table for sample 9 : WF9

Peak	Size [bp]	Conc. [pg/μl]	Molarity [pmol/l]	Observations	Aligned Migration Time [s]
1	35	125.00	5,411.3	Lower Marker	43.00
2	501	609.19	1,841.6		83.18
3	528	150.49	431.5		84.46
4	559	134.43	364.4		85.89
5	588	90.04	231.9		87.28
6	627	232.67	562.2		88.66
7	731	389.93	808.0		91.32
8	1,760	22.03	19.0		99.57
9	1,992	15.88	12.1		101.01
10	2,455	11.73	7.2		102.55
11	3,322	5.03	2.3		104.75
12	10,380	75.00	10.9	Upper Marker	113.00

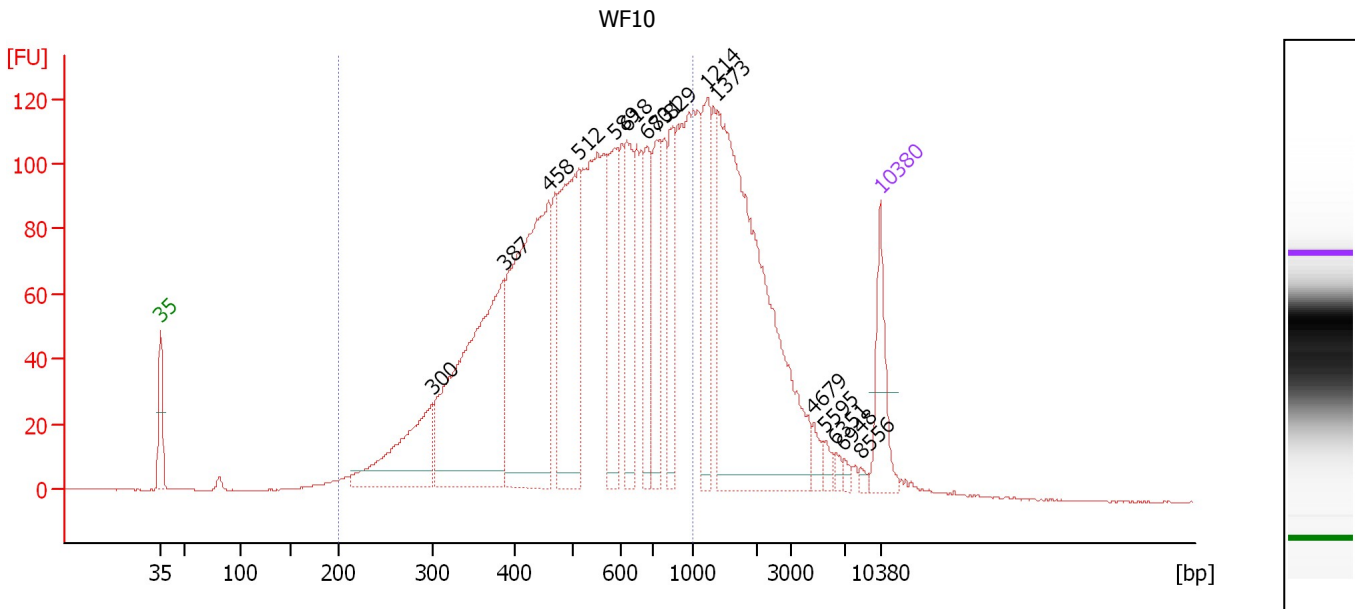
Region table for sample 9 : WF9

From [bp]	Average Size [bp]	To [bp]	Corr. Area	Molarity [pmol/l]	Co % of Ior Total	Size distribution in CV [%]	Conc. [pg/μl]
200	575	1,000	1,089.2	5,075.2	86	26.6	1,752.13

Assay Class: High Sensitivity DNA Assay
 Data Path: C:\...ents and Settings\Bioanalyzer\2015-07-01\2015-07-01_002.xad

Created: 7/1/2015 1:17:40 PM
 Modified: 7/1/2015 1:58:07 PM

Electropherogram Summary Continued ...



Overall Results for sample 10 : WF10

Number of peaks found: 16 Corr. Area 1: 2,733.8
 Noise: 0.2

Peak table for sample 10 : WF10

Peak	Size [bp]	Conc. [pg/μl]	Molarity [pmol/l]	Observations	Aligned Migration Time [s]
1	35	125.00	5,411.3	Lower Marker	43.00
2	300	212.59	1,074.6		69.44
3	387	529.79	2,071.8		76.44
4	458	553.34	1,829.7		80.75
5	512	338.43	1,000.6		83.70
6	589	162.55	418.5		87.28
7	618	133.11	326.5		88.37
8	680	110.51	246.3		90.29
9	731	117.75	244.0		91.33
10	829	100.73	184.0		92.62
11	1,214	134.84	168.3		96.20
12	1,373	654.14	721.6		97.19
13	4,679	18.58	6.0		106.52
14	5,595	11.21	3.0		107.71
15	6,351	8.28	2.0		108.70
16	6,948	7.01	1.5		109.47
17	8,556	5.23	0.9		111.13
18	10,380	75.00	10.9	Upper Marker	113.00

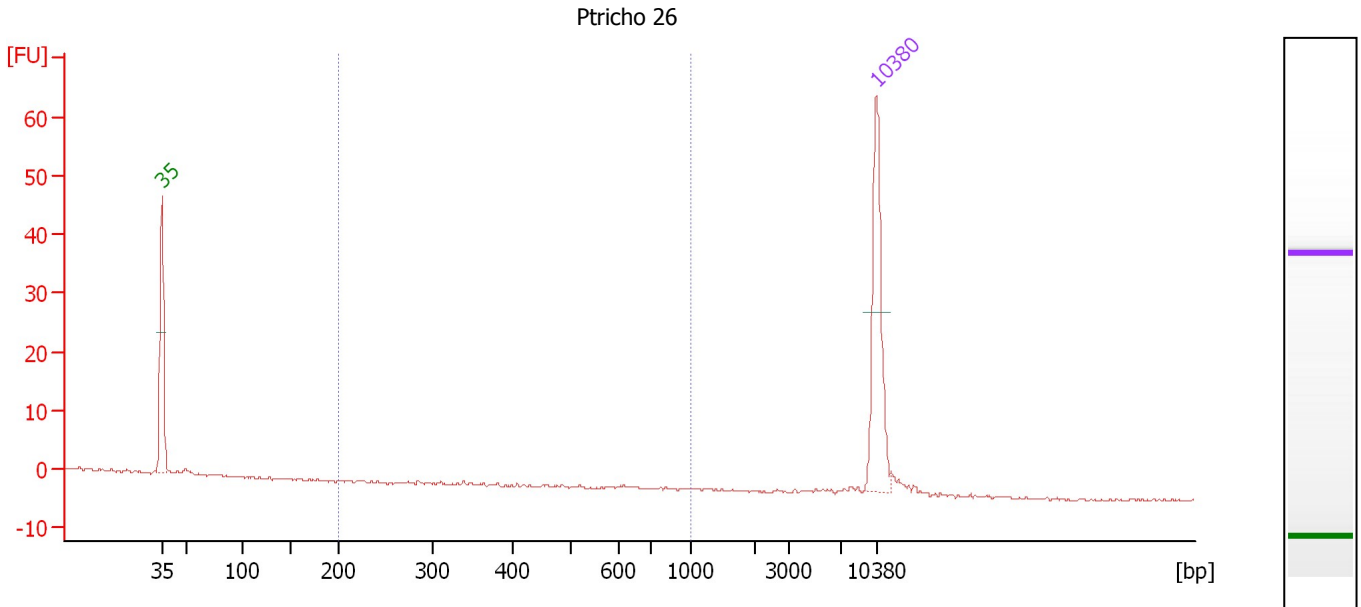
Region table for sample 10 : WF10

From [bp]	Average Size [bp]	To [bp]	Corr. Area	Molarity [pmol/l]	Co % of Ior Total	Size distribution in CV [%]	Conc. [pg/μl]
200	554	1,000	2,733.8	11,215.5	72	33.2	3,481.34

Assay Class: High Sensitivity DNA Assay
 Data Path: C:\...ents and Settings\Bioanalyzer\2015-07-01\2015-07-01_002.xad

Created: 7/1/2015 1:17:40 PM
 Modified: 7/1/2015 1:58:07 PM

Electropherogram Summary Continued ...



Overall Results for sample 11 : Ptricho 26

Number of peaks found: 0 Corr. Area 1: 0.0
 Noise: 0.2

Peak table for sample 11 : Ptricho 26

Peak	Size [bp]	Conc. [pg/μl]	Molarity [pmol/l]	Observations	Aligned Migration Time [s]
1	35	125.00	5,411.3	Lower Marker	43.00
2	10,380	75.00	10.9	Upper Marker	113.00

Region table for sample 11 : Ptricho 26

From [bp]	Average Size [bp]	To [bp]	Corr. Area	Molarity [pmol/l]	Co % of Ior Total	Size distribution in CV [%]	Conc. [pg/μl]
200	0	1,000	0.0	0.0	0	0.0	0.00

Assay Class: High Sensitivity DNA Assay
Data Path: C:\...ents and Settings\Bioanalyzer\2015-07-01\2015-07-01_002.xad

Created: 7/1/2015 1:17:40 PM
Modified: 7/1/2015 1:58:07 PM

Gel Image

