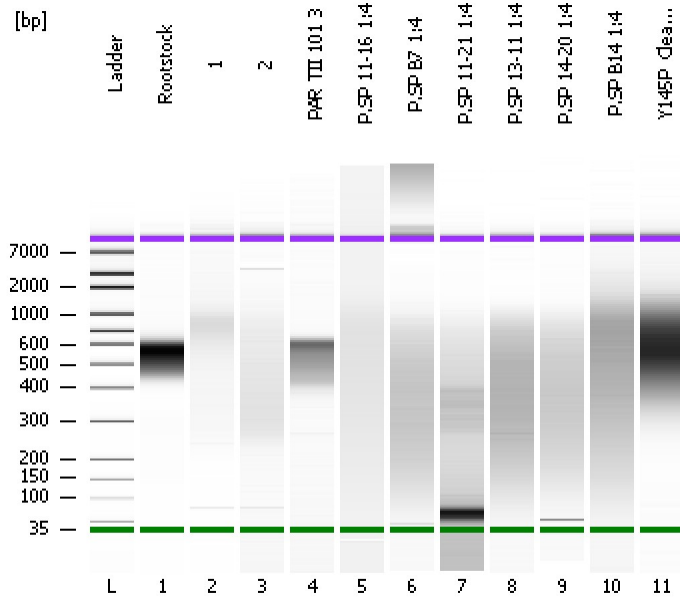


Assay Class: High Sensitivity DNA Assay
Data Path: C:\...ents and Settings\Bioanalyzer\2015-07-09\2015-07-09_002.xad

Created: 7/9/2015 12:18:32 PM
Modified: 7/9/2015 1:01:20 PM

Electrophoresis File Run Summary



Instrument Information:

Instrument Name: DE13701086 Firmware: C.01.069
Serial#: DE13701086 Type: G2938B

Assay Information:

Assay Origin Path: C:\Program Files\Agilent\2100 bioanalyzer\2100 expert\assays\dsDNA\High Sensitivity DNA.xsy
Assay Class: High Sensitivity DNA Assay
Version: 1.03
Assay Comments: Copyright © 2003-2010 Agilent Technologies

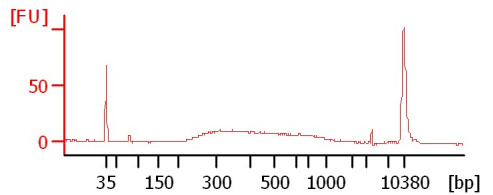
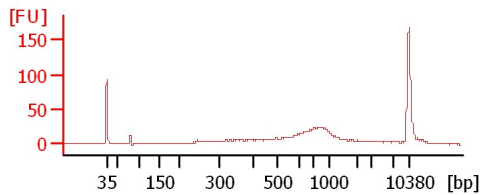
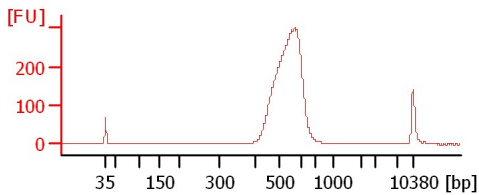
Chip Information:

Chip Lot #:
Reagent Kit Lot #:
Chip Comments:

Rootstock

1

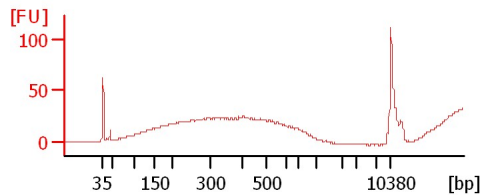
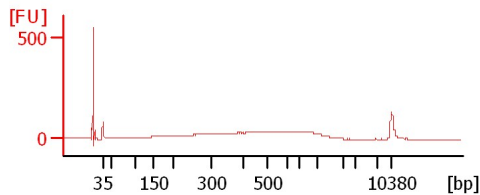
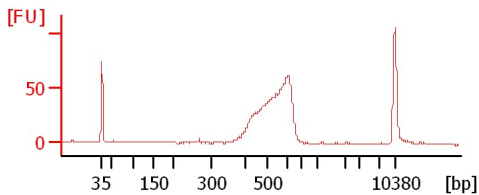
2



PAR TII 101 3

P.SP 11-16 1:4

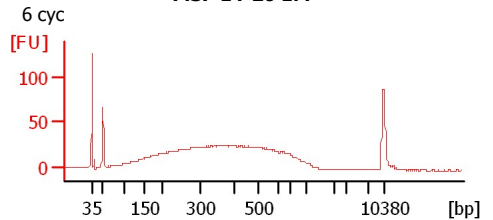
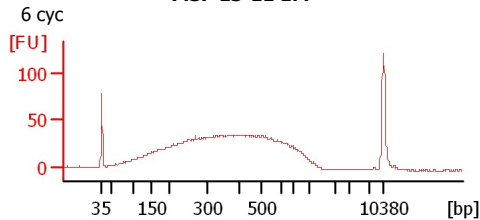
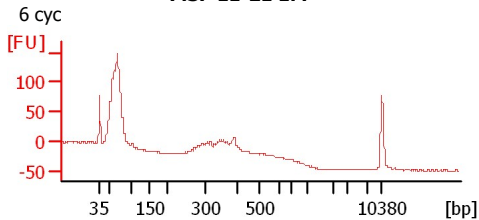
P.SP B7 1:4



P.SP 11-21 1:4

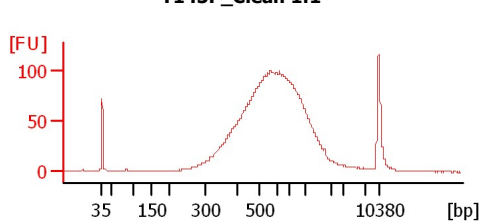
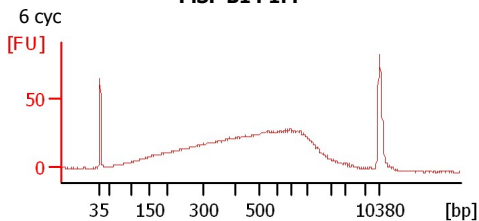
P.SP 13-11 1:4

P.SP 14-20 1:4



P.SP B14 1:4

Y145P_Clean 1:1



Assay Class: High Sensitivity DNA Assay
 Data Path: C:\...ents and Settings\Bioanalyzer\2015-07-09\2015-07-09_002.xad

Created: 7/9/2015 12:18:32 PM
 Modified: 7/9/2015 1:01:20 PM

Electrophoresis File Run Summary (Chip Summary)

Sample Name	Sample Comment	Rest. Digest	Status	Observation	Result Label	Result Color
Rootstock		<input type="checkbox"/>	✓			
1		<input type="checkbox"/>	✓			
2		<input type="checkbox"/>	✓			
PAR TII 101 3		<input type="checkbox"/>	✓			
P.SP 11-16 1:4	6 cyc	<input type="checkbox"/>	✓			
P.SP B7 1:4	6 cyc	<input type="checkbox"/>	✓			
P.SP 11-21 1:4	6 cyc	<input type="checkbox"/>	✓			
P.SP 13-11 1:4	6 cyc	<input type="checkbox"/>	✓			
P.SP 14-20 1:4	6 cyc	<input type="checkbox"/>	✓			
P.SP B14 1:4	6 cyc	<input type="checkbox"/>	✓			
Y145P_Clean 1:1		<input type="checkbox"/>	✓			
Ladder		<input type="checkbox"/>	✓			

Chip Lot #

Reagent Kit Lot #

Chip Comments :

Assay Class: High Sensitivity DNA Assay
Data Path: C:\...ents and Settings\Bioanalyzer\2015-07-09\2015-07-09_002.xad

Created: 7/9/2015 12:18:32 PM
Modified: 7/9/2015 1:01:20 PM

Electrophoresis Assay Details

General Analysis Settings

Number of Available Sample and Ladder Wells (Max.) : 12
Minimum Visible Range [s] : 32
Maximum Visible Range [s] : 138
Start Analysis Time Range [s] : 33
End Analysis Time Range [s] : 137.5
Ladder Concentration [pg/μl] : 1950
Uses Standard Area for Ladder Fragments
Lower Marker Concentration [pg/μl] : 125
Upper Marker Concentration [pg/μl] : 75
Used Upper Marker for Quantitation
Standard Curve Fit is Point to Point
Show Data Aligned to Lower and Upper Marker

Integrator Settings

Integration Start Time [s] : 33.05
Integration End Time [s] : 137
Slope Threshold : 0.8
Height Threshold [FU] : 5
Area Threshold : 0.1
Width Threshold [s] : 0.6
Baseline Plateau [s] : 0.5

Filter Settings

Filter Width [s] : 0.5
Polynomial Order : 4

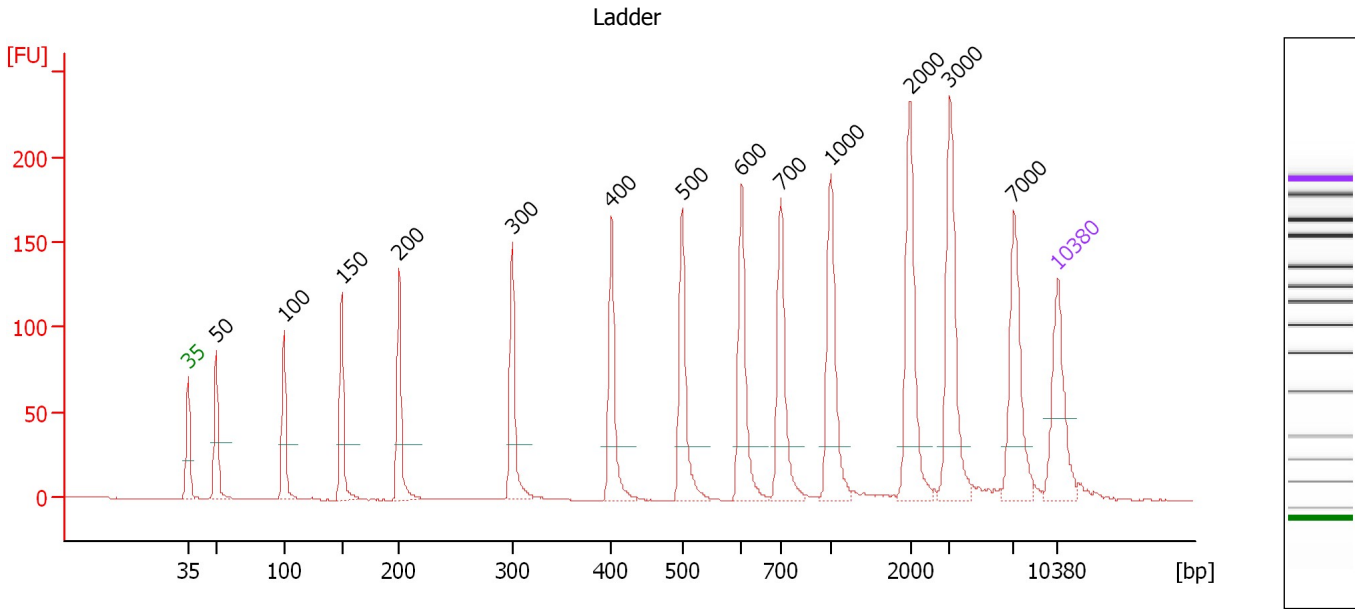
Ladder

Ladder Peak	Size	Area
1	35	160
2	50	210
3	100	208
4	150	221
5	200	242
6	300	270
7	400	305
8	500	306
9	600	336
10	700	321
11	1000	366
12	2000	413
13	3000	411
14	7000	400
15	10380	214

Assay Class: High Sensitivity DNA Assay
 Data Path: C:\...ents and Settings\Bioanalyzer\2015-07-09\2015-07-09_002.xad

Created: 7/9/2015 12:18:32 PM
 Modified: 7/9/2015 1:01:20 PM

Electropherogram Summary



Overall Results for Ladder

Noise: 0.2

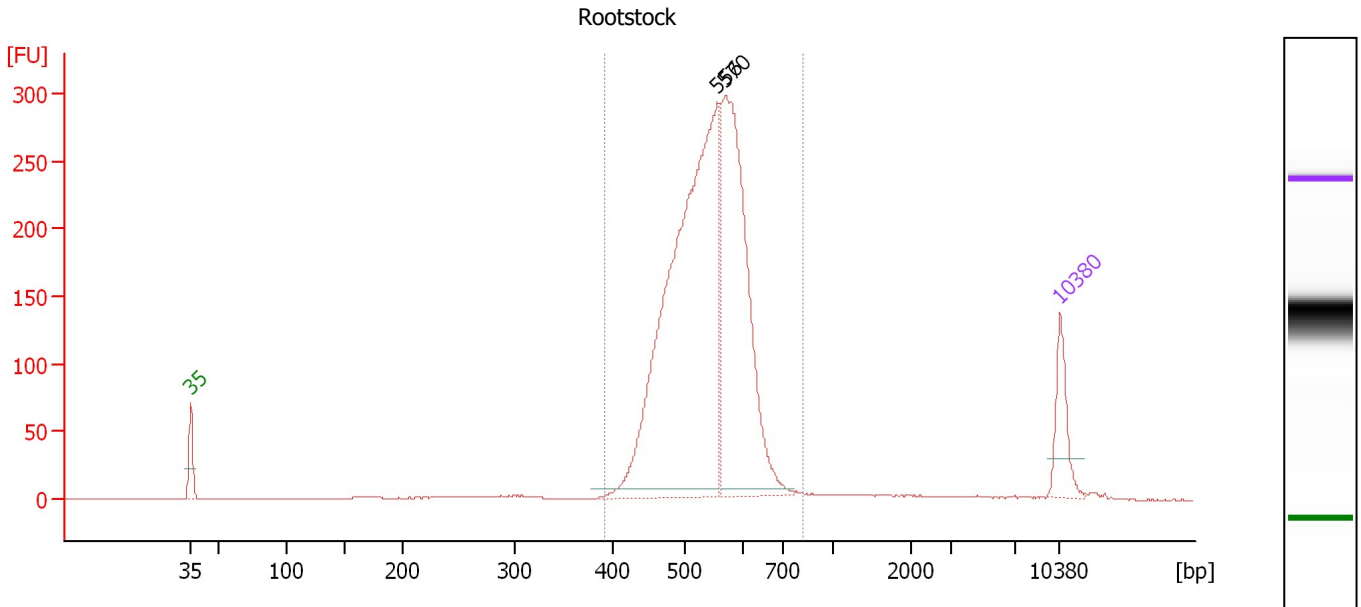
Peak table for Ladder

Peak	Size [bp]	Conc. [pg/μl]	Molarity [pmol/l]	Observations	Aligned Migration Time [s]
1	35	125.00	5,411.3	Lower Marker	43.00
2	50	150.00	4,545.5	Ladder Peak	45.27
3	100	150.00	2,272.7	Ladder Peak	50.73
4	150	150.00	1,515.2	Ladder Peak	55.36
5	200	150.00	1,136.4	Ladder Peak	60.00
6	300	150.00	757.6	Ladder Peak	69.09
7	400	150.00	568.2	Ladder Peak	77.08
8	500	150.00	454.5	Ladder Peak	82.74
9	600	150.00	378.8	Ladder Peak	87.55
10	700	150.00	324.7	Ladder Peak	90.68
11	1,000	150.00	227.3	Ladder Peak	94.72
12	2,000	150.00	113.6	Ladder Peak	101.11
13	3,000	150.00	75.8	Ladder Peak	104.33
14	7,000	150.00	32.5	Ladder Peak	109.48
15	10,380	75.00	10.9	Upper Marker	113.00

Assay Class: High Sensitivity DNA Assay
 Data Path: C:\...ents and Settings\Bioanalyzer\2015-07-09\2015-07-09_002.xad

Created: 7/9/2015 12:18:32 PM
 Modified: 7/9/2015 1:01:20 PM

Electropherogram Summary Continued ...



Overall Results for sample 1 : Rootstock

Number of peaks found: 2 Corr. Area 1: 2,593.3
 Noise: 0.2

Peak table for sample 1 : Rootstock

Peak	Size [bp]	Conc. [pg/μl]	Molarity [pmol/l]	Observations	Aligned Migration Time [s]
1	35	125.00	5,411.3	Lower Marker	43.00
2	556	1,250.65	3,410.9		85.41
3	570	718.80	1,911.2		86.10
4	10,380	75.00	10.9	Upper Marker	113.00

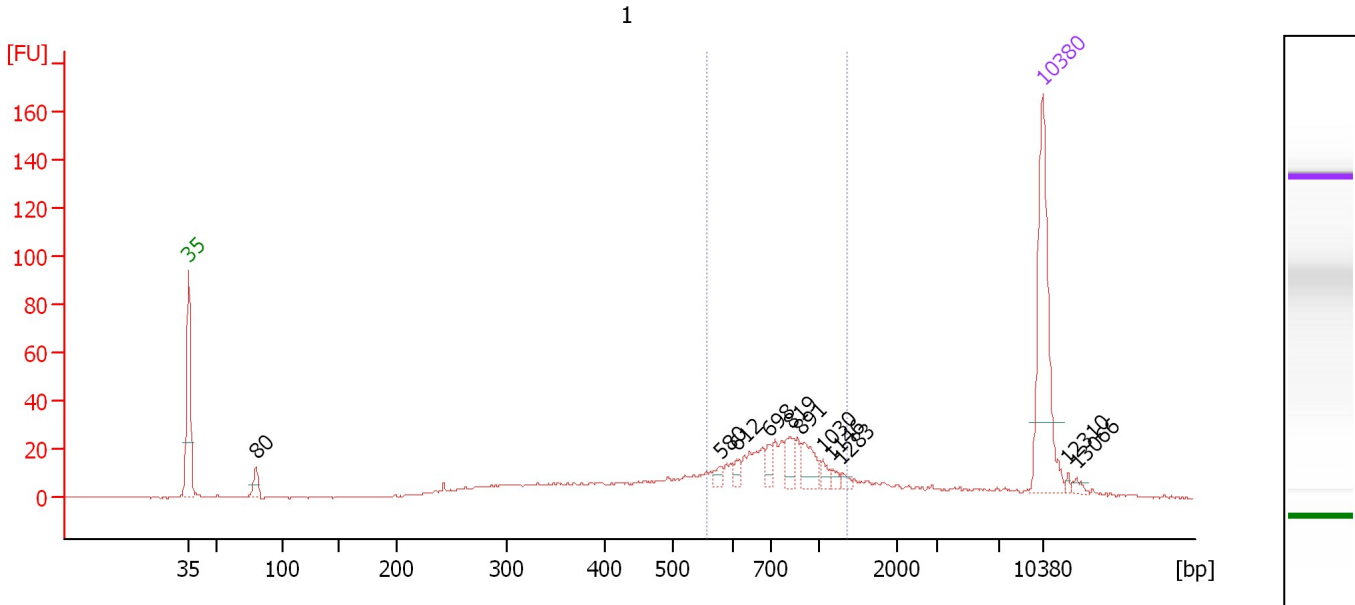
Region table for sample 1 : Rootstock

From [bp]	Average Size [bp]	To [bp]	Corr. Area	Molarity [pmol/l]	Co % of lor Total	Size distribution in CV [%]	Conc. [pg/μl]
392	540	820	2,593.3	5,955.7	95	10.4	2,093.04

Assay Class: High Sensitivity DNA Assay
 Data Path: C:\...ents and Settings\Bioanalyzer\2015-07-09\2015-07-09_002.xad

Created: 7/9/2015 12:18:32 PM
 Modified: 7/9/2015 1:01:20 PM

Electropherogram Summary Continued ...



Overall Results for sample 2 : 1

Number of peaks found: 11 Corr. Area 1: 228.6
 Noise: 0.2

Peak table for sample 2 : 1

Peak	Size [bp]	Conc. [pg/μl]	Molarity [pmol/l]	Observations	Aligned Migration Time [s]
1	35	125.00	5,411.3	Lower Marker	43.00
2	80	12.35	233.8		48.55
3	580	4.92	12.9		86.56
4	612	4.97	12.3		87.92
5	698	7.54	16.4		90.63
6	819	12.02	22.2		92.29
7	891	17.23	29.3		93.25
8	1,030	4.89	7.2		94.91
9	1,146	3.46	4.6		95.65
10	1,283	3.23	3.8		96.53
11	10,380	75.00	10.9	Upper Marker	113.00
12	12,310	0.00	0.0		115.01
13	13,066	0.00	0.0		115.80

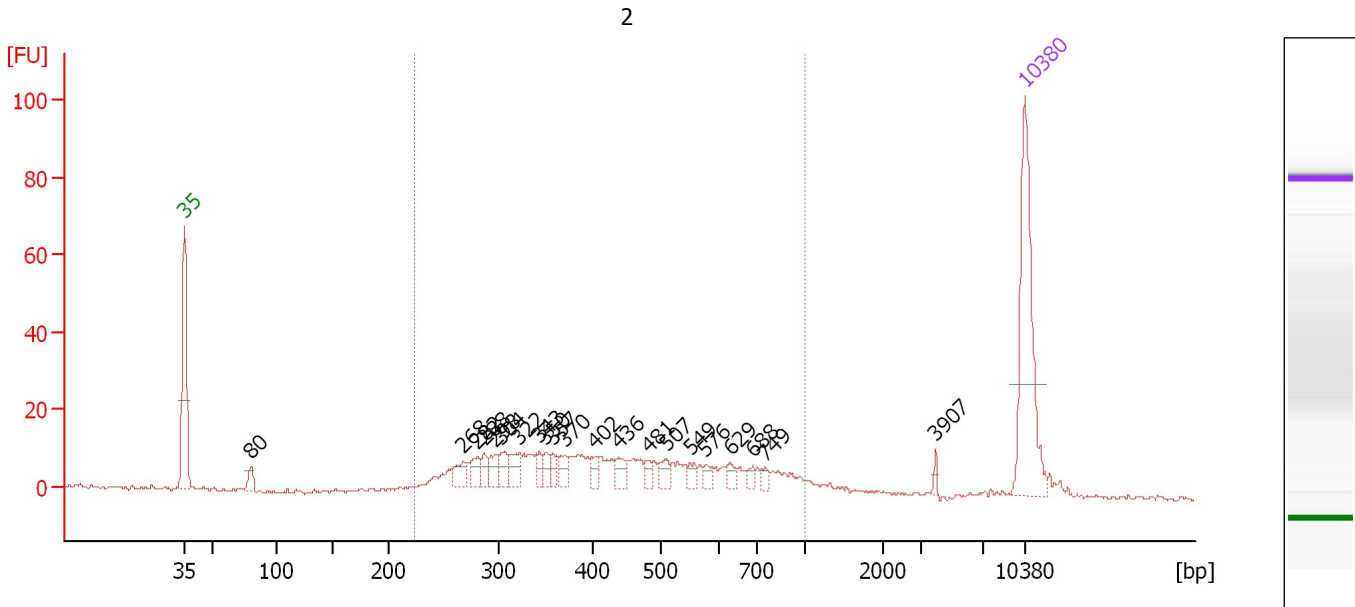
Region table for sample 2 : 1

From [bp]	Average Size [bp]	To [bp]	Corr. Area	Molarity [pmol/l]	Co % of lor Total	Size distribution in CV [%]	Conc. [pg/μl]
557	795	1,350	228.6	287.1	44	23.5	142.34

Assay Class: High Sensitivity DNA Assay
 Data Path: C:\...ents and Settings\Bioanalyzer\2015-07-09\2015-07-09_002.xad

Created: 7/9/2015 12:18:32 PM
 Modified: 7/9/2015 1:01:20 PM

Electropherogram Summary Continued ...



Overall Results for sample 3 : 2

Number of peaks found: 21 Corr. Area 1: 325.4
 Noise: 0.5


Peak table for sample 3 : 2

Peak	Size [bp]	Conc. [pg/μl]	Molarity [pmol/l]	Observations	Aligned Migration Time [s]
1	35	125.00	5,411.3	Lower Marker	43.00
2	80	9.45	178.8		48.55
3	268	12.02	67.9		66.21
4	282	11.60	62.4		67.41
5	288	8.24	43.4		67.99
6	298	11.20	57.0		68.88
7	304	12.72	63.4		69.41
8	322	13.66	64.2		70.88
9	343	7.90	34.9		72.52
10	350	8.38	36.3		73.05
11	357	7.46	31.6		73.67
12	370	9.67	39.6		74.69
13	402	6.84	25.8		77.18
14	436	8.57	29.8		79.13
15	481	5.68	17.9		81.66
16	507	8.71	26.0		83.08
17	549	5.91	16.3		85.08
18	576	5.02	13.2		86.41
19	629	5.68	13.7		88.45
20	688	4.58	10.1		90.32
21	749	4.26	8.6		91.34
22	3,907	2.43	0.9		105.50
23	10,380	75.00	10.9	Upper Marker	113.00

Assay Class: High Sensitivity DNA Assay
Data Path: C:\...ents and Settings\Bioanalyzer\2015-07-09\2015-07-09_002.xad

Created: 7/9/2015 12:18:32 PM
Modified: 7/9/2015 1:01:20 PM

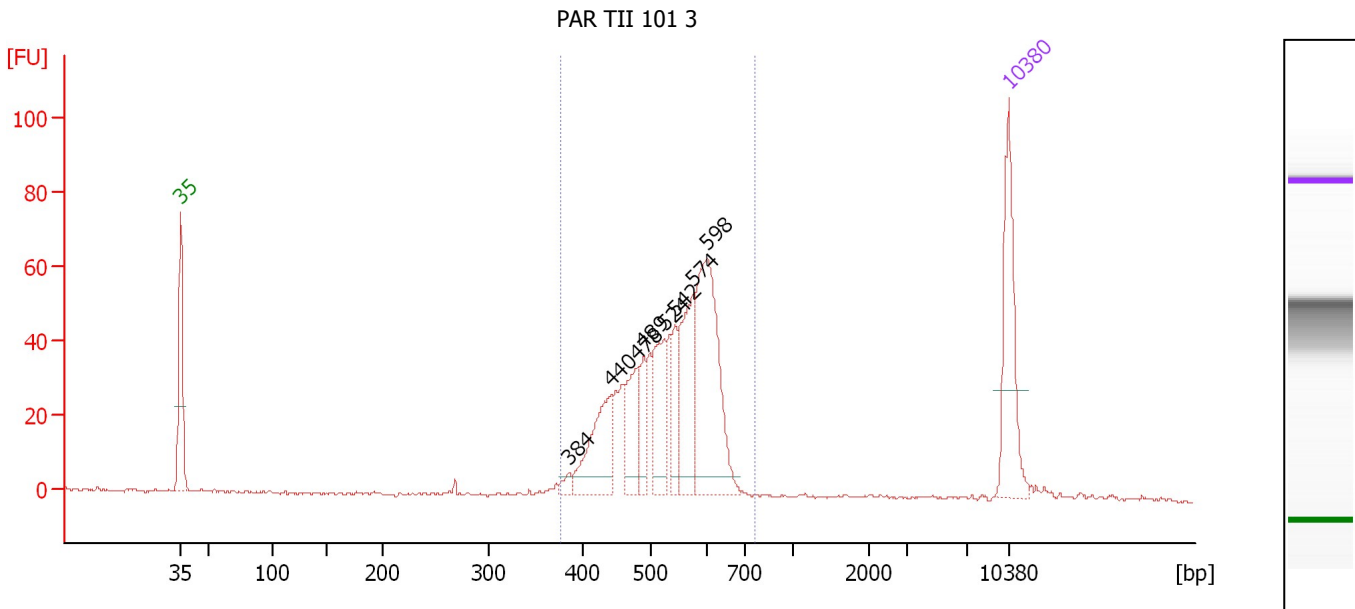
Electropherogram Summary Continued ...**... Region table for sample 3 : 2**

From [bp]	Average Size [bp]	To [bp]	Corr. Area	Molarity [pmol/l]	Co % of lor Total	Size distribution in CV [%]	Conc. [pg/μl]
224	455	1,000	325.4	1,330.3	 91	36.7	337.83

Assay Class: High Sensitivity DNA Assay
 Data Path: C:\...ents and Settings\Bioanalyzer\2015-07-09\2015-07-09_002.xad

Created: 7/9/2015 12:18:32 PM
 Modified: 7/9/2015 1:01:20 PM

Electropherogram Summary Continued ...



Overall Results for sample 4 : PAR TII 101 3

Number of peaks found: 8 Corr. Area 1: 599.5
 Noise: 0.4

Peak table for sample 4 : PAR TII 101 3

Peak	Size [bp]	Conc. [pg/μl]	Molarity [pmol/l]	Observations	Aligned Migration Time [s]
1	35	125.00	5,411.3	Lower Marker	43.00
2	384	7.42	29.3		75.81
3	440	80.44	277.2		79.33
4	478	50.44	159.9		81.49
5	489	33.47	103.7		82.12
6	524	65.03	188.1		83.88
7	542	33.50	93.7		84.74
8	574	87.18	230.0		86.32
9	598	162.87	412.8		87.44
10	10,380	75.00	10.9	Upper Marker	113.00

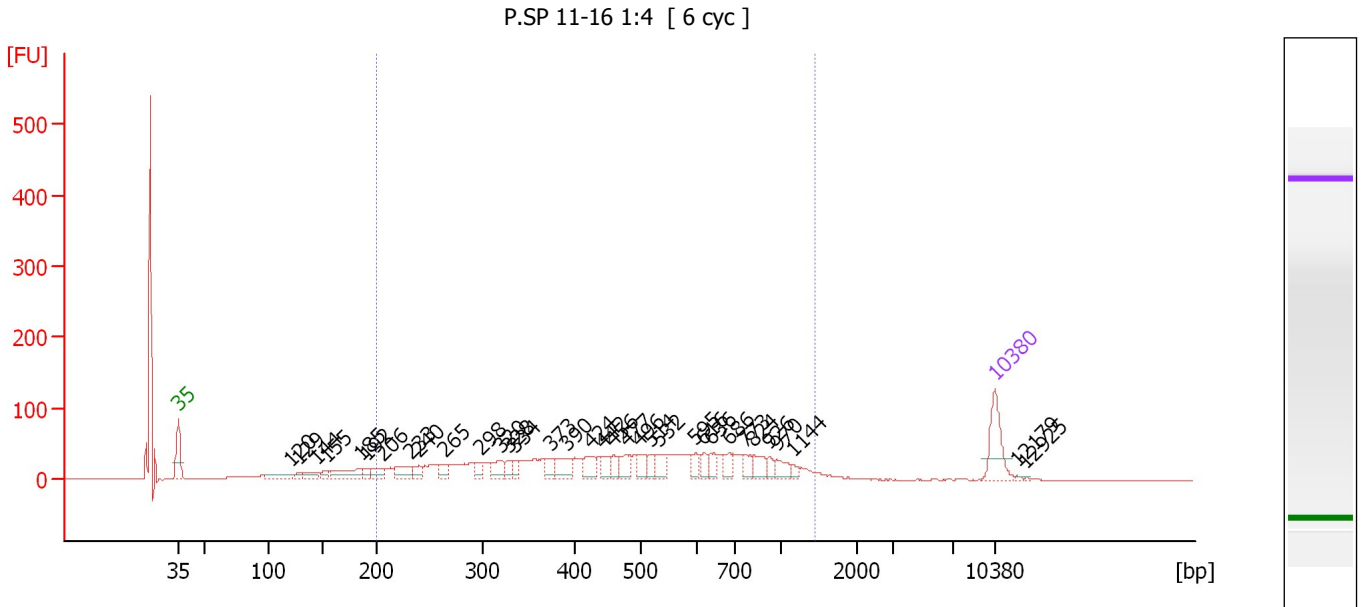
Region table for sample 4 : PAR TII 101 3

From [bp]	Average Size [bp]	To [bp]	Corr. Area	Molarity [pmol/l]	Co % of Ior Total	Size distribution in CV [%]	Conc. [pg/μl]
376	530	769	599.5	1,809.4	95	12.9	618.75

Assay Class: High Sensitivity DNA Assay
 Data Path: C:\...ents and Settings\Bioanalyzer\2015-07-09\2015-07-09_002.xad

Created: 7/9/2015 12:18:32 PM
 Modified: 7/9/2015 1:01:20 PM

Electropherogram Summary Continued ...



Overall Results for sample 5 : P.SP 11-16 1:4

Number of peaks found: 34 Corr. Area 1: 1,385.9
 Noise: 0.3

Peak table for sample 5 : P.SP 11-16 1:4

Peak	Size [bp]	Conc. [pg/μl]	Molarity [pmol/l]	Observations	Aligned Migration Time [s]
1	35	125.00	5,411.3	Lower Marker	43.00
2	120	32.46	409.2		52.60
3	129	11.39	134.3		53.37
4	144	29.40	308.7		54.83
5	155	18.48	181.0		55.79
6	185	73.22	598.9		58.63
7	192	17.06	134.9		59.22
8	206	35.30	260.2		60.50
9	233	46.35	301.9		62.97
10	240	23.55	148.6		63.65
11	265	26.85	153.6		65.89
12	298	25.62	130.3		68.91
13	320	40.26	190.6		70.69
14	328	21.01	97.0		71.33
15	334	21.01	95.2		71.83
16	373	29.60	120.3		74.89
17	390	54.06	209.8		76.31
18	424	47.92	171.4		78.41
19	442	28.57	97.9		79.46
20	456	27.26	90.6		80.24
21	477	35.75	113.6		81.43
22	496	37.95	115.9		82.52
23	514	21.83	64.3		83.44
24	532	36.45	103.9		84.26
25	595	27.91	71.0		87.32

Assay Class: High Sensitivity DNA Assay
 Data Path: C:\...ents and Settings\Bioanalyzer\2015-07-09\2015-07-09_002.xad

Created: 7/9/2015 12:18:32 PM
 Modified: 7/9/2015 1:01:20 PM

Electropherogram Summary Continued ...

... Peak table for sample 5 : P.SP 11-16 1:4

Peak	Size [bp]	Conc. [pg/μl]	Molarity [pmol/l]	Observations	Aligned Migration Time [s]
26	616	23.35	57.4		88.05
27	636	28.15	67.0		88.69
28	686	25.22	55.7		90.25
29	773	25.63	50.2		91.66
30	824	32.33	59.5		92.35
31	926	17.19	28.1		93.72
32	970	28.47	44.5		94.31
33	1,144	9.40	12.4		95.64
34	10,380	75.00	10.9	Upper Marker	113.00
35	12,179	0.00	0.0		114.87
36	12,925	0.00	0.0		115.65

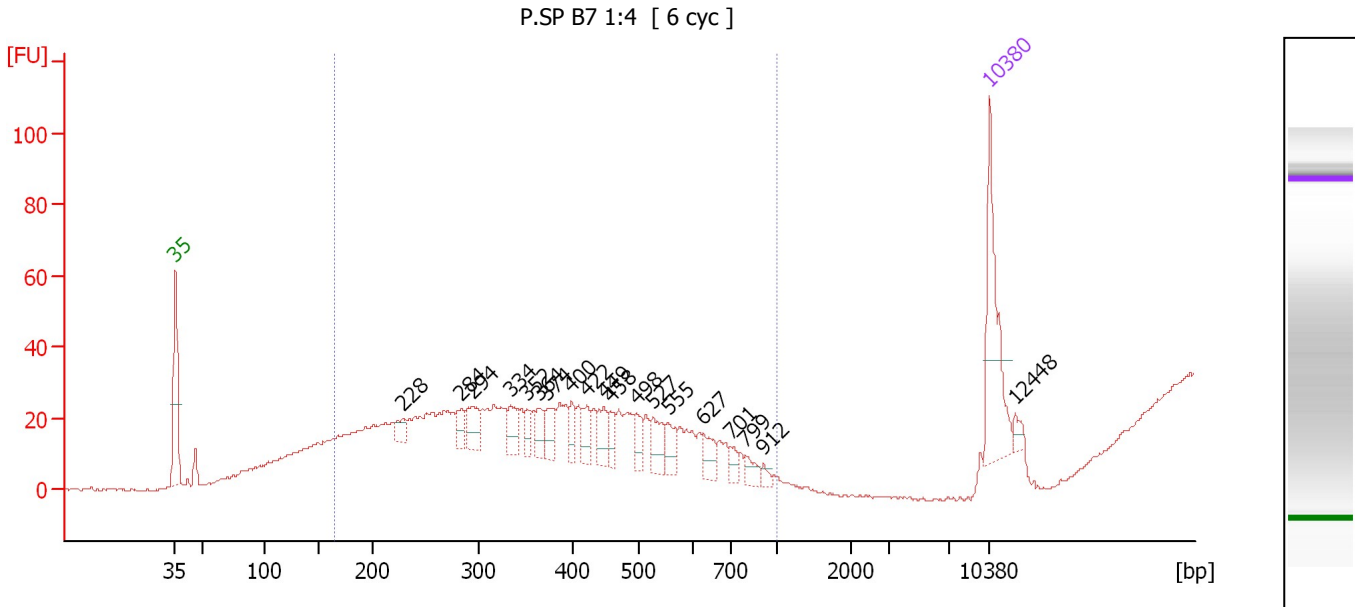
Region table for sample 5 : P.SP 11-16 1:4

From [bp]	Average Size [bp]	To [bp]	Corr. Area	Molarity [pmol/l]	Co % of lor Total	Size distribution in CV [%]	Conc. [pg/μl]
200	522	1,443	1,385.9	4,668.5	71	46.4	1,223.16

Assay Class: High Sensitivity DNA Assay
 Data Path: C:\...ents and Settings\Bioanalyzer\2015-07-09\2015-07-09_002.xad

Created: 7/9/2015 12:18:32 PM
 Modified: 7/9/2015 1:01:20 PM

Electropherogram Summary Continued ...



Overall Results for sample 6 : P.SP B7 1:4

Number of peaks found: 19 Corr. Area 1: 377.8
 Noise: 0.4

Peak table for sample 6 : P.SP B7 1:4

Peak	Size [bp]	Conc. [pg/μl]	Molarity [pmol/l]	Observations	Aligned Migration Time [s]
1	35	125.00	5,411.3	Lower Marker	43.00
2	228	13.86	92.3		62.52
3	284	19.28	103.0		67.60
4	294	29.84	153.9		68.52
5	334	23.35	105.9		71.82
6	352	14.25	61.4		73.24
7	364	20.27	84.4		74.20
8	374	22.68	91.9		74.98
9	400	15.91	60.3		77.04
10	422	19.88	71.4		78.32
11	449	22.90	77.3		79.83
12	458	15.56	51.4		80.38
13	498	19.28	58.7		82.63
14	527	26.01	74.8		84.05
15	555	19.28	52.6		85.38
16	627	17.96	43.4		88.40
17	701	9.13	19.8		90.69
18	799	10.93	20.7		92.02
19	912	5.18	8.6		93.53
20	10,380	75.00	10.9	Upper Marker	113.00
21	12,448	0.00	0.0		115.15

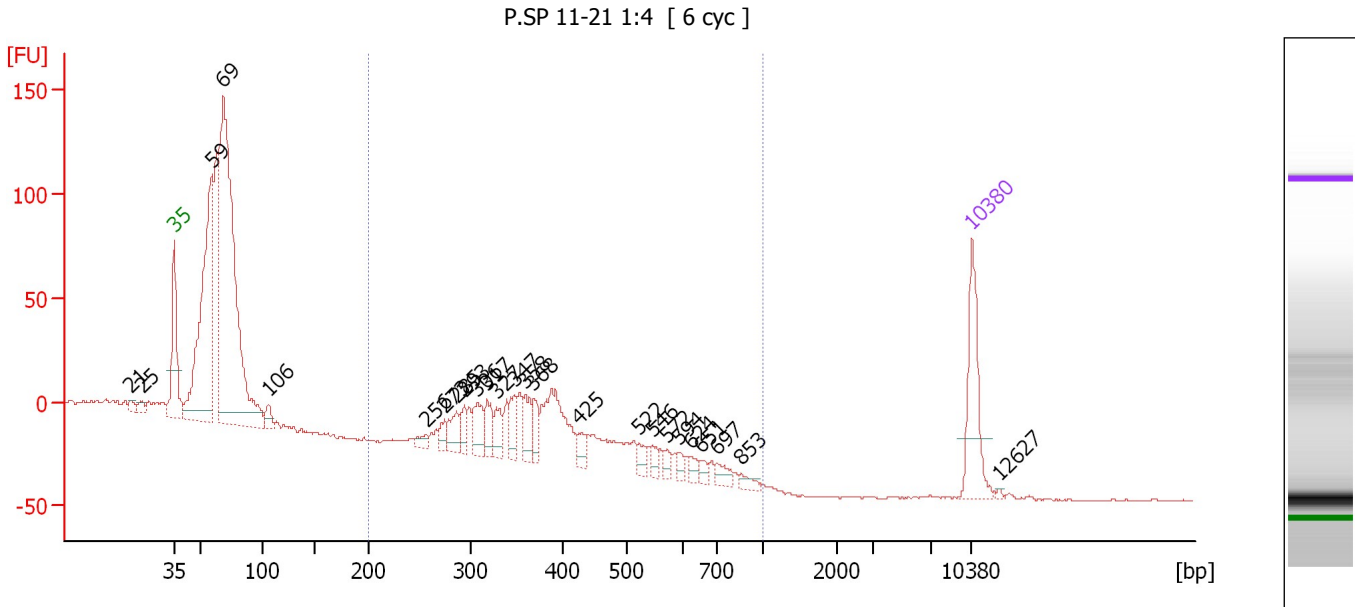
Region table for sample 6 : P.SP B7 1:4

From [bp]	Average Size [bp]	To [bp]	Corr. Area	Molarity [pmol/l]	Co % of Ior Total	Size distribution in CV [%]	Conc. [pg/μl]
165	314	1,000	377.8	2,840.1	87	29.4	516.06

Assay Class: High Sensitivity DNA Assay
 Data Path: C:\...ents and Settings\Bioanalyzer\2015-07-09\2015-07-09_002.xad

Created: 7/9/2015 12:18:32 PM
 Modified: 7/9/2015 1:01:20 PM

Electropherogram Summary Continued ...



Overall Results for sample 7 : P.SP 11-21 1:4

Number of peaks found: 25 Corr. Area 1: 314.3
 Noise: 0.2

Peak table for sample 7 : P.SP 11-21 1:4

Peak	Size [bp]	Conc. [pg/μl]	Molarity [pmol/l]	Observations	Aligned Migration Time [s]
1	21	0.00	0.0		39.07
2	25	0.00	0.0		40.19
3	35	125.00	5,411.3	Lower Marker	43.00
4	59	427.44	10,943.6		46.28
5	69	734.92	16,226.5		47.30
6	106	19.69	282.7		51.24
7	256	11.84	70.1		65.09
8	273	18.32	101.5		66.68
9	285	31.71	168.4		67.75
10	293	22.47	116.2		68.45
11	306	39.77	196.9		69.58
12	317	29.14	139.2		70.47
13	327	28.24	130.8		71.26
14	347	31.52	137.6		72.85
15	358	35.20	148.9		73.74
16	368	23.66	97.4		74.54
17	425	16.28	58.0		78.51
18	522	14.00	40.6		83.80
19	546	11.22	31.1		84.97
20	572	9.28	24.6		86.19
21	594	7.87	20.1		87.26
22	624	11.09	26.9		88.29
23	651	8.11	18.9		89.14
24	697	14.82	32.2		90.59
25	853	9.41	16.7		92.74

Assay Class: High Sensitivity DNA Assay
 Data Path: C:\...ents and Settings\Bioanalyzer\2015-07-09\2015-07-09_002.xad

Created: 7/9/2015 12:18:32 PM
 Modified: 7/9/2015 1:01:20 PM

Electropherogram Summary Continued ...

... Peak table for sample 7 : P.SP 11-21 1:4

Peak	Size [bp]	Conc. [pg/μl]	Molarity [pmol/l]	Observations	Aligned Migration Time [s]
26	10,380	75.00	10.9	Upper Marker	113.00
27	12,627	0.00	0.0		115.34

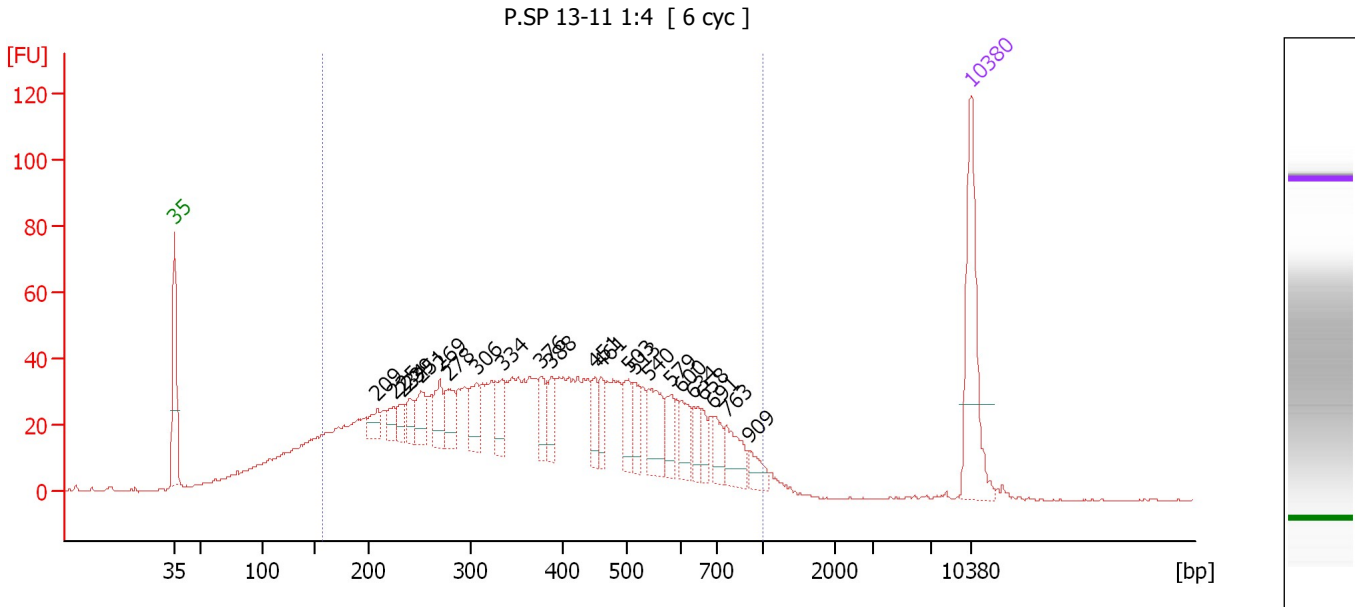
Region table for sample 7 : P.SP 11-21 1:4

From [bp]	Average Size [bp]	To [bp]	Corr. Area	Molarity [pmol/l]	Co % of Ior Total	Size distribution in CV [%]	Conc. [pg/μl]
200	369	1,000	314.3	1,325.6	24	17.4	311.50

Assay Class: High Sensitivity DNA Assay
 Data Path: C:\...ents and Settings\Bioanalyzer\2015-07-09\2015-07-09_002.xad

Created: 7/9/2015 12:18:32 PM
 Modified: 7/9/2015 1:01:20 PM

Electropherogram Summary Continued ...



Overall Results for sample 8 : P.SP 13-11 1:4

Number of peaks found: 23 Corr. Area 1: 1,566.5
 Noise: 0.3

Peak table for sample 8 : P.SP 13-11 1:4


Peak	Size [bp]	Conc. [pg/μl]	Molarity [pmol/l]	Observations	Aligned Migration Time [s]
1	35	125.00	5,411.3	Lower Marker	43.00
2	209	16.64	120.6		60.82
3	225	14.30	96.3		62.27
4	234	14.00	90.7		63.07
5	239	17.22	109.0		63.58
6	251	28.88	174.5		64.61
7	269	27.22	153.1		66.30
8	278	27.73	151.4		67.05
9	306	28.09	139.3		69.54
10	334	27.94	126.9		71.79
11	376	26.37	106.2		75.16
12	388	20.32	79.4		76.10
13	451	18.87	63.4		79.95
14	461	20.21	66.5		80.51
15	503	26.86	80.9		82.90
16	513	22.02	65.0		83.37
17	540	39.61	111.1		84.68
18	579	21.46	56.1		86.56
19	600	22.62	57.1		87.54
20	634	16.90	40.4		88.62
21	658	12.13	27.9		89.37
22	691	17.18	37.7		90.40
23	763	28.35	56.3		91.53
24	909	13.37	22.3		93.50
25	10,380	75.00	10.9	Upper Marker	113.00

Assay Class: High Sensitivity DNA Assay
Data Path: C:\...ents and Settings\Bioanalyzer\2015-07-09\2015-07-09_002.xad

Created: 7/9/2015 12:18:32 PM
Modified: 7/9/2015 1:01:20 PM

Electropherogram Summary Continued ...

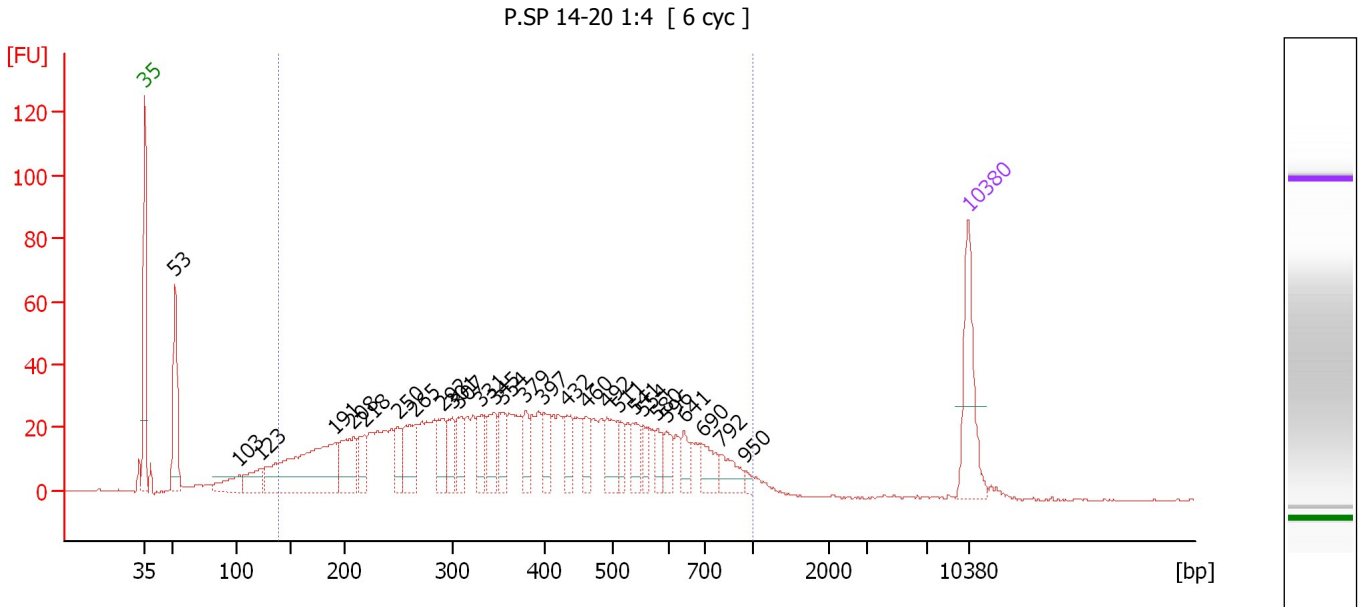
... Region table for sample 8 : P.SP 13-11 1:4

From [bp]	Average Size [bp]	To [bp]	Corr. Area	Molarity [pmol/l]	Co % of lor Total	Size distribution in CV [%]	Conc. [pg/μl]
157	410	1,000	1,566.5	7,141.0	 88	41.7	1,495.26

Assay Class: High Sensitivity DNA Assay
 Data Path: C:\...ents and Settings\Bioanalyzer\2015-07-09\2015-07-09_002.xad

Created: 7/9/2015 12:18:32 PM
 Modified: 7/9/2015 1:01:20 PM

Electropherogram Summary Continued ...



Overall Results for sample 9 : P.SP 14-20 1:4

Number of peaks found: 28 Corr. Area 1: 1,223.8
 Noise: 0.3

Peak table for sample 9 : P.SP 14-20 1:4

Peak	Size [bp]	Conc. [pg/μl]	Molarity [pmol/l]	Observations	Aligned Migration Time [s]
1	35	125.00	5,411.3	Lower Marker	43.00
2	53	128.86	3,695.0		45.58
3	103	39.22	575.7		51.02
4	123	43.32	534.5		52.84
5	191	231.67	1,835.3		59.19
6	208	78.67	573.0		60.73
7	218	35.04	243.5		61.63
8	250	36.93	223.9		64.53
9	265	68.39	391.3		65.90
10	292	42.40	219.8		68.39
11	301	39.03	196.6		69.16
12	307	39.44	194.6		69.66
13	331	40.67	186.2		71.56
14	345	46.99	206.3		72.70
15	354	37.18	159.1		73.42
16	379	30.50	122.1		75.37
17	397	31.47	120.2		76.82
18	432	35.29	123.7		78.91
19	460	24.53	80.7		80.49
20	492	44.56	137.1		82.31
21	511	21.98	65.2		83.26
22	541	29.92	83.8		84.71
23	554	19.13	52.3		85.34
24	580	21.28	55.6		86.57
25	596	22.45	57.1		87.34

Assay Class: High Sensitivity DNA Assay
 Data Path: C:\...ents and Settings\Bioanalyzer\2015-07-09\2015-07-09_002.xad

Created: 7/9/2015 12:18:32 PM
 Modified: 7/9/2015 1:01:20 PM

Electropherogram Summary Continued ...

... Peak table for sample 9 : P.SP 14-20 1:4

Peak	Size [bp]	Conc. [pg/μl]	Molarity [pmol/l]	Observations	Aligned Migration Time [s]
26	641	22.26	52.6		88.84
27	690	28.65	62.9		90.38
28	792	28.54	54.6		91.92
29	950	6.10	9.7		94.05
30	10,380	75.00	10.9	Upper Marker	113.00

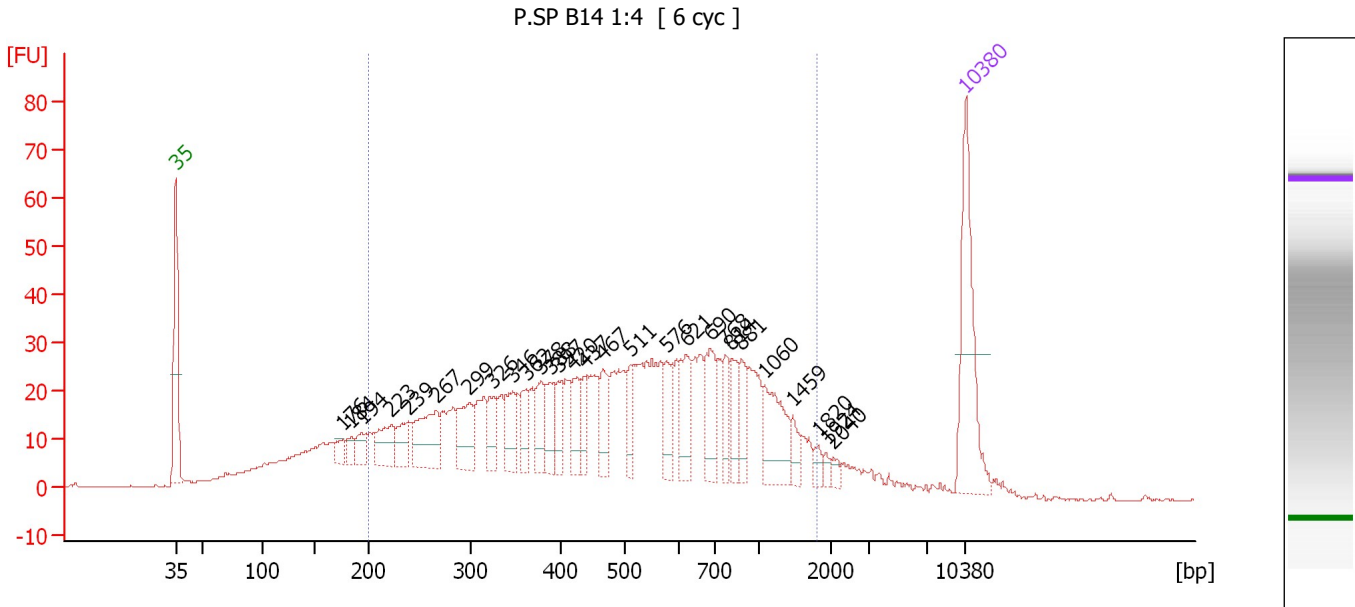
Region table for sample 9 : P.SP 14-20 1:4

From [bp]	Average Size [bp]	To [bp]	Corr. Area	Molarity [pmol/l]	Co % of lor Total	Size distribution in CV [%]	Conc. [pg/μl]
139	402	1,000	1,223.8	8,571.5	87	42.7	1,712.35

Assay Class: High Sensitivity DNA Assay
 Data Path: C:\...ents and Settings\Bioanalyzer\2015-07-09\2015-07-09_002.xad

Created: 7/9/2015 12:18:32 PM
 Modified: 7/9/2015 1:01:20 PM

Electropherogram Summary Continued ...



Overall Results for sample 10 : P.SP B14 1:4

Number of peaks found: 28 Corr. Area 1: 1,088.0
 Noise: 0.2

Peak table for sample 10 : P.SP B14 1:4

Peak	Size [bp]	Conc. [pg/μl]	Molarity [pmol/l]	Observations	Aligned Migration Time [s]
1	35	125.00	5,411.3	Lower Marker	43.00
2	176	11.96	103.1		57.74
3	184	11.57	95.4		58.49
4	194	15.11	117.7		59.48
5	223	36.23	246.2		62.08
6	239	25.93	164.4		63.55
7	267	57.77	327.8		66.10
8	299	41.01	207.6		69.03
9	326	23.54	109.5		71.15
10	346	30.97	135.4		72.80
11	362	22.70	95.0		74.03
12	378	26.88	107.6		75.35
13	388	26.64	103.9		76.16
14	397	19.25	73.4		76.87
15	420	24.13	87.0		78.24
16	437	19.84	68.8		79.18
17	467	25.11	81.4		80.88
18	511	20.91	61.9		83.29
19	576	24.51	64.4		86.41
20	621	34.19	83.4		88.20
21	690	37.58	82.5		90.38
22	768	21.44	42.3		91.60
23	814	22.05	41.0		92.22
24	881	23.54	40.5		93.11
25	1,060	46.51	66.5		95.10

Assay Class: High Sensitivity DNA Assay
 Data Path: C:\...ents and Settings\Bioanalyzer\2015-07-09\2015-07-09_002.xad

Created: 7/9/2015 12:18:32 PM
 Modified: 7/9/2015 1:01:20 PM

Electropherogram Summary Continued ...

... Peak table for sample 10 : P.SP B14 1:4

Peak	Size [bp]	Conc. [pg/μl]	Molarity [pmol/l]	Observations	Aligned Migration Time [s]
26	1,459	12.11	12.6		97.65
27	1,820	6.65	5.5		99.96
28	1,924	3.69	2.9		100.62
29	2,040	4.43	3.3		101.24
30	10,380	75.00	10.9	Upper Marker	113.00

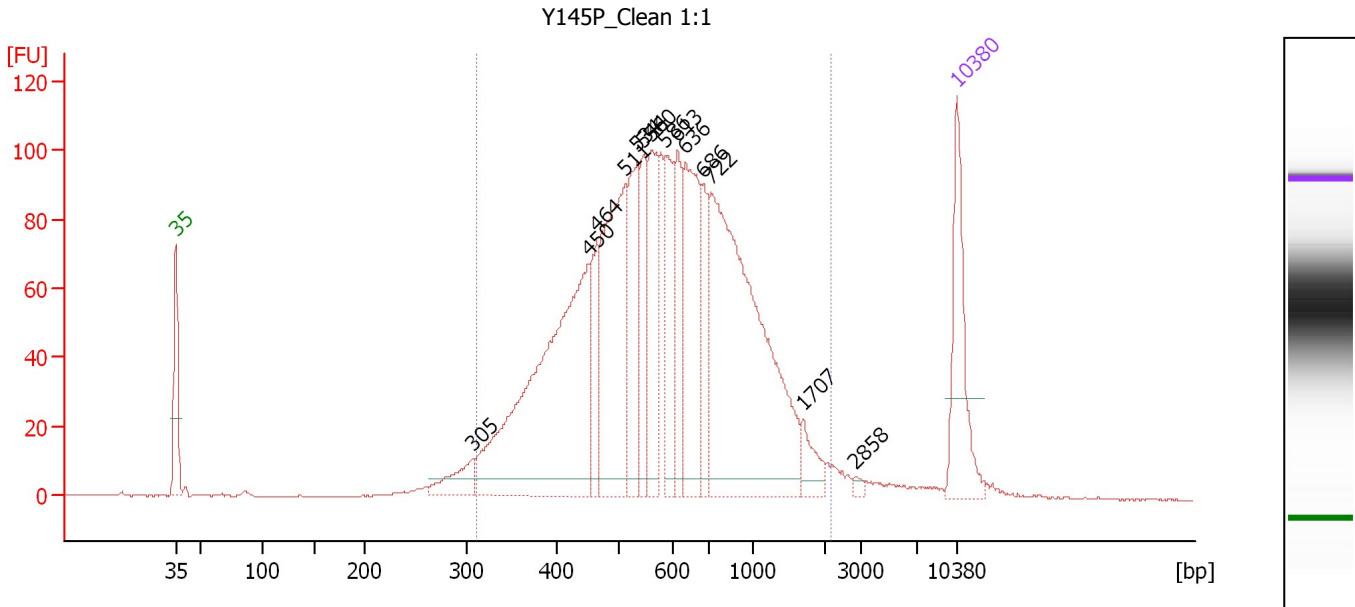
Region table for sample 10 : P.SP B14 1:4

From [bp]	Average Size [bp]	To [bp]	Corr. Area	Molarity [pmol/l]	Co % of lor Total	Size distribution in CV [%]	Conc. [pg/μl]
200	576	1,798	1,088.0	4,904.4	83	55.6	1,323.29

Assay Class: High Sensitivity DNA Assay
 Data Path: C:\...ents and Settings\Bioanalyzer\2015-07-09\2015-07-09_002.xad

Created: 7/9/2015 12:18:32 PM
 Modified: 7/9/2015 1:01:20 PM

Electropherogram Summary Continued ...



Overall Results for sample 11 : Y145P_Clean 1:1

Number of peaks found: 14 Corr. Area 1: 2,216.9
 Noise: 0.2

Peak table for sample 11 : Y145P_Clean 1:1

Peak	Size [bp]	Conc. [pg/μl]	Molarity [pmol/l]	Observations	Aligned Migration Time [s]
1	35	125.00	5,411.3	Lower Marker	43.00
2	305	35.97	178.5		69.52
3	450	416.30	1,400.3		79.94
4	464	63.54	207.5		80.70
5	511	217.19	643.8		83.28
6	534	110.21	312.7		84.38
7	544	65.78	183.2		84.86
8	560	97.90	264.9		85.62
9	586	75.15	194.4		86.86
10	613	69.04	170.6		87.96
11	636	141.62	337.3		88.68
12	686	51.76	114.2		90.26
13	722	423.36	888.9		90.97
14	1,707	22.50	20.0		99.24
15	2,858	3.81	2.0		103.87
16	10,380	75.00	10.9	Upper Marker	113.00

Region table for sample 11 : Y145P_Clean 1:1

From [bp]	Average Size [bp]	To [bp]	Corr. Area	Molarity [pmol/l]	Co % of Ior Total	Size distribution in CV [%]	Conc. [pg/μl]
311	668	2,203	2,216.9	4,991.5	95	46.5	1,820.35

Assay Class: High Sensitivity DNA Assay
Data Path: C:\...ents and Settings\Bioanalyzer\2015-07-09\2015-07-09_002.xad

Created: 7/9/2015 12:18:32 PM
Modified: 7/9/2015 1:01:20 PM

Gel Image

