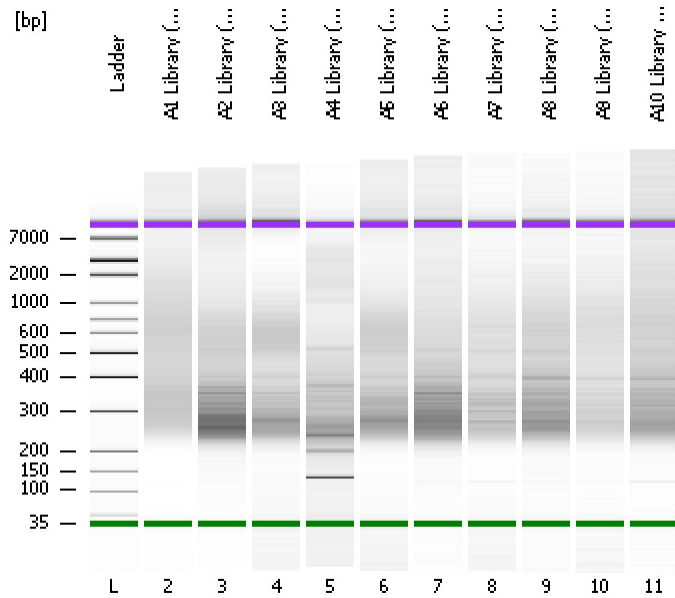


Assay Class: High Sensitivity DNA Assay  
Data Path: C:\...oanalyzer\2015-07-16\2015-07-16\_001\_MiSeq\_135\_Libraries.xad

Created: 7/16/2015 9:09:17 AM  
Modified: 7/16/2015 9:52:22 AM

Electrophoresis File Run Summary



Instrument Information:

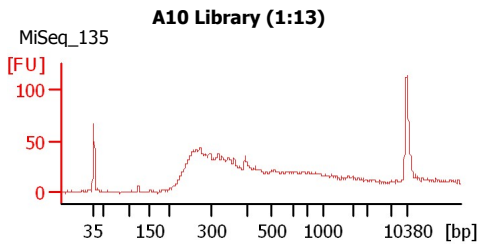
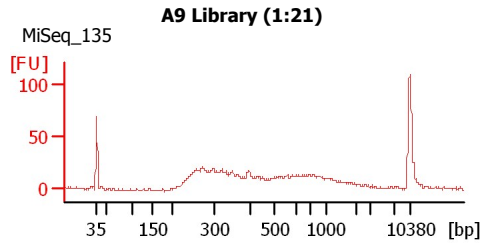
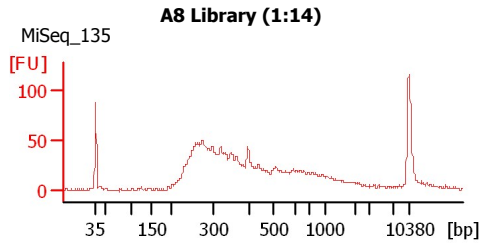
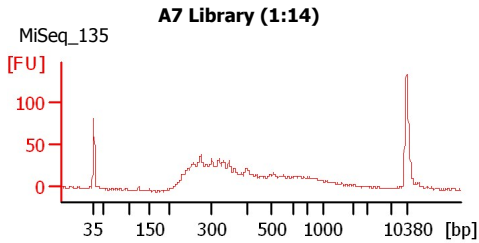
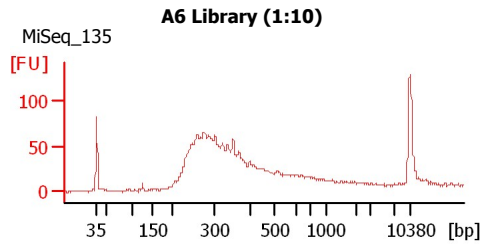
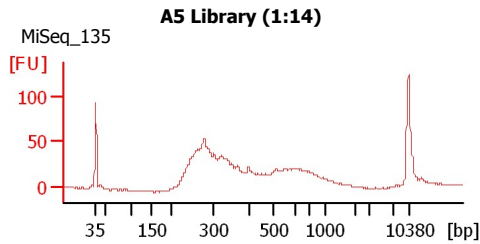
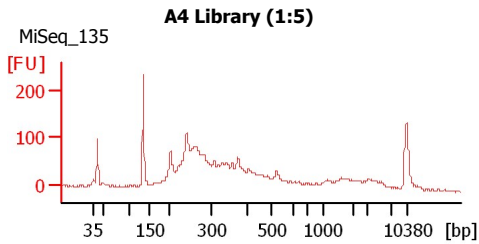
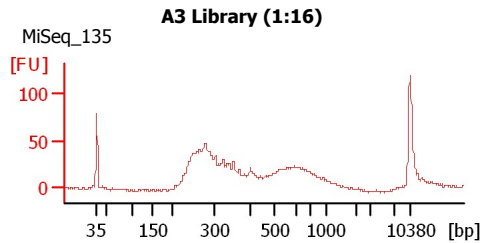
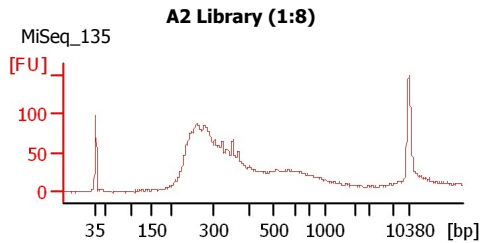
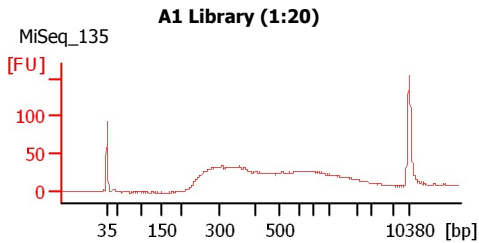
Instrument Name: DE13701086      Firmware: C.01.069  
Serial#: DE13701086      Type: G2938B

Assay Information:

Assay Origin Path: C:\Program Files\Agilent\2100 bioanalyzer\2100 expert\assays\dsDNA\High Sensitivity DNA.xsy  
Assay Class: High Sensitivity DNA Assay  
Version: 1.03  
Assay Comments: Copyright © 2003-2010 Agilent Technologies

Chip Information:

Chip Lot #:   
Reagent Kit Lot #:   
Chip Comments:



Assay Class: High Sensitivity DNA Assay  
 Data Path: C:\...oanalyzer\2015-07-16\2015-07-16\_001\_MiSeq\_135\_Libraries.xad

Created: 7/16/2015 9:09:17 AM  
 Modified: 7/16/2015 9:52:22 AM

**Electrophoresis File Run Summary (Chip Summary)**

Sample Name	Sample Comment	Rest. Digest	Status	Observation	Result Label	Result Color
A1 Library (1:20)	MiSeq_135	<input type="checkbox"/>	✓			
A2 Library (1:8)	MiSeq_135	<input type="checkbox"/>	✓			
A3 Library (1:16)	MiSeq_135	<input type="checkbox"/>	✓			
A4 Library (1:5)	MiSeq_135	<input type="checkbox"/>	✓			
A5 Library (1:14)	MiSeq_135	<input type="checkbox"/>	✓			
A6 Library (1:10)	MiSeq_135	<input type="checkbox"/>	✓			
A7 Library (1:14)	MiSeq_135	<input type="checkbox"/>	✓			
A8 Library (1:14)	MiSeq_135	<input type="checkbox"/>	✓			
A9 Library (1:21)	MiSeq_135	<input type="checkbox"/>	✓			
A10 Library (1:13)	MiSeq_135	<input type="checkbox"/>	✓			
Ladder	MiSeq_135	<input type="checkbox"/>	✓			

Chip Lot #

Reagent Kit Lot #

Chip Comments :

Assay Class: High Sensitivity DNA Assay  
Data Path: C:\...oanalyzer\2015-07-16\2015-07-16\_001\_MiSeq\_135\_Libraries.xad

Created: 7/16/2015 9:09:17 AM  
Modified: 7/16/2015 9:52:22 AM

**Electrophoresis Assay Details**

**General Analysis Settings**

Number of Available Sample and Ladder Wells (Max.) : 12  
Minimum Visible Range [s] : 32  
Maximum Visible Range [s] : 138  
Start Analysis Time Range [s] : 33  
End Analysis Time Range [s] : 137.5  
Ladder Concentration [pg/μl] : 1950  
Uses Standard Area for Ladder Fragments  
Lower Marker Concentration [pg/μl] : 125  
Upper Marker Concentration [pg/μl] : 75  
Used Upper Marker for Quantitation  
Standard Curve Fit is Point to Point  
Show Data Aligned to Lower and Upper Marker

**Integrator Settings**

Integration Start Time [s] : 33.05  
Integration End Time [s] : 137  
Slope Threshold : 0.8  
Height Threshold [FU] : 5  
Area Threshold : 0.1  
Width Threshold [s] : 0.6  
Baseline Plateau [s] : 0.5

**Filter Settings**

Filter Width [s] : 0.5  
Polynomial Order : 4

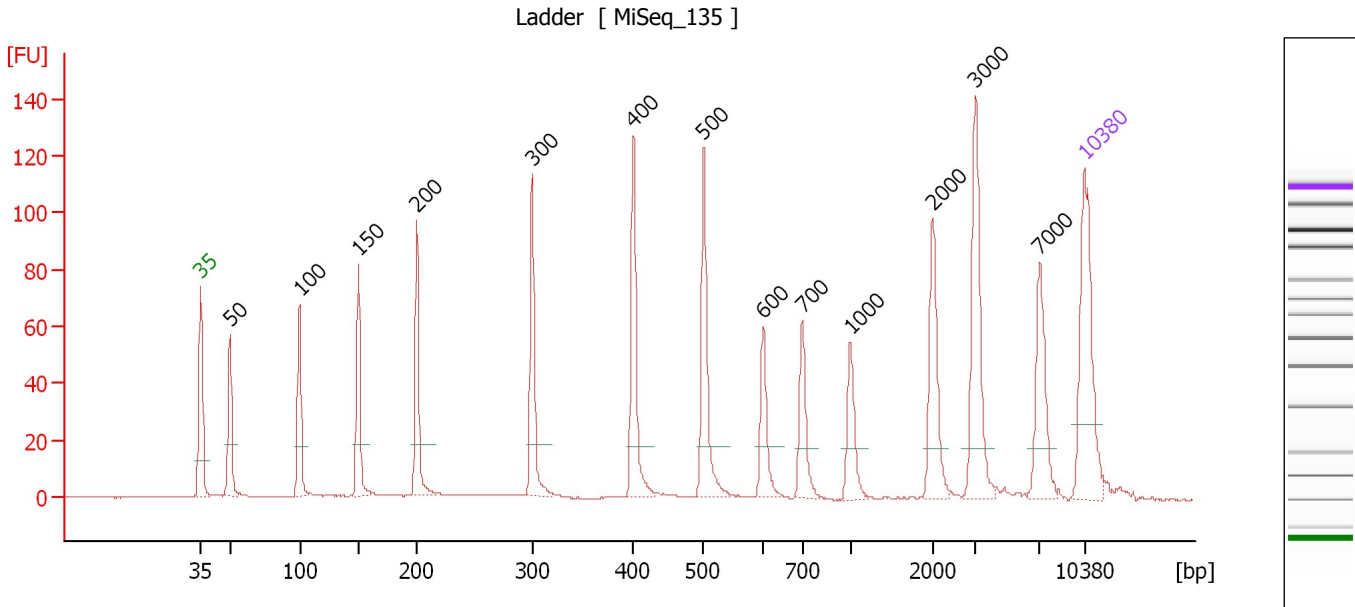
**Ladder**

Ladder Peak	Size	Area
1	35	160
2	50	210
3	100	208
4	150	221
5	200	242
6	300	270
7	400	305
8	500	306
9	600	336
10	700	321
11	1000	366
12	2000	413
13	3000	411
14	7000	400
15	10380	214

Assay Class: High Sensitivity DNA Assay  
 Data Path: C:\...oanalyzer\2015-07-16\2015-07-16\_001\_MiSeq\_135\_Libraries.xad

Created: 7/16/2015 9:09:17 AM  
 Modified: 7/16/2015 9:52:22 AM

**Electropherogram Summary**



**Overall Results for Ladder**

Noise: 0.1

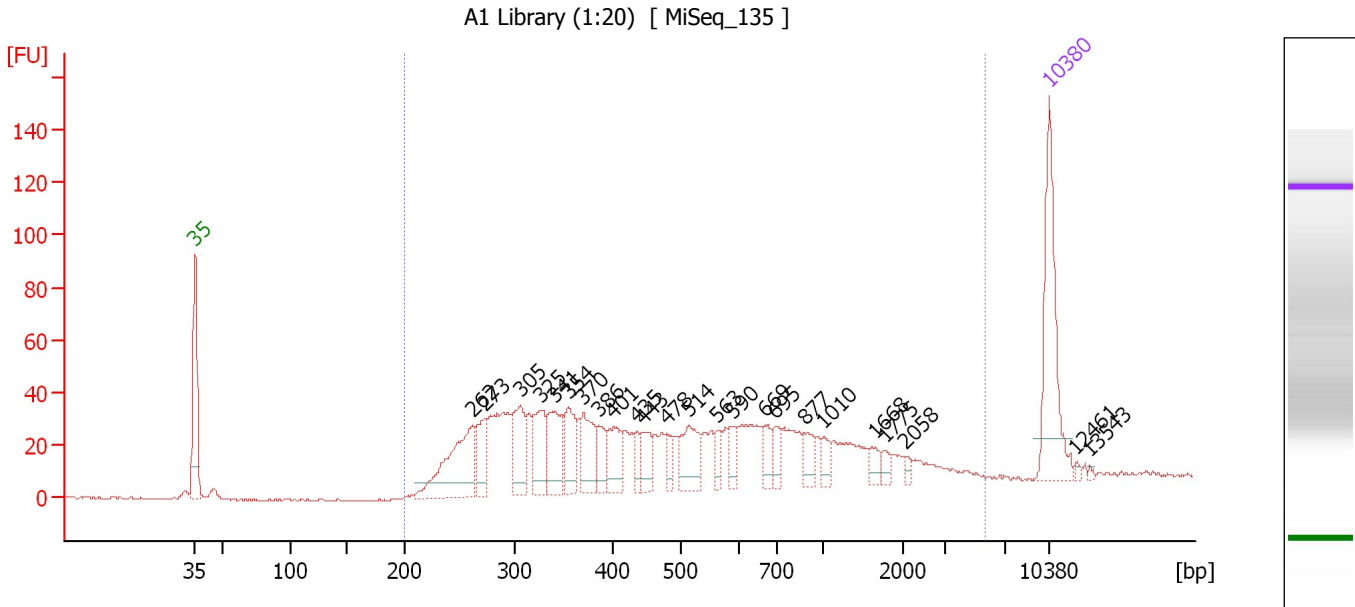
**Peak table for Ladder**

Peak	Size [bp]	Conc. [pg/μl]	Molarity [pmol/l]	Observations	Aligned Migration Time [s]
1	35	125.00	5,411.3	Lower Marker	43.00
2	50	150.00	4,545.5	Ladder Peak	45.32
3	100	150.00	2,272.7	Ladder Peak	50.82
4	150	150.00	1,515.2	Ladder Peak	55.46
5	200	150.00	1,136.4	Ladder Peak	60.11
6	300	150.00	757.6	Ladder Peak	69.23
7	400	150.00	568.2	Ladder Peak	77.26
8	500	150.00	454.5	Ladder Peak	82.84
9	600	150.00	378.8	Ladder Peak	87.57
10	700	150.00	324.7	Ladder Peak	90.65
11	1,000	150.00	227.3	Ladder Peak	94.45
12	2,000	150.00	113.6	Ladder Peak	100.96
13	3,000	150.00	75.8	Ladder Peak	104.38
14	7,000	150.00	32.5	Ladder Peak	109.45
15	10,380	75.00	10.9	Upper Marker	113.00

Assay Class: High Sensitivity DNA Assay  
 Data Path: C:\...oanalyzer\2015-07-16\2015-07-16\_001\_MiSeq\_135\_Libraries.xad

Created: 7/16/2015 9:09:17 AM  
 Modified: 7/16/2015 9:52:22 AM

**Electropherogram Summary Continued ...**



**Overall Results for sample 2 : A1 Library (1:20)**

Number of peaks found: 24                      Corr. Area 1: 1,082.2  
 Noise: 0.3

**Peak table for sample 2 : A1 Library (1:20)**

Peak	Size [bp]	Conc. [pg/μl]	Molarity [pmol/l]	Observations	Aligned Migration Time [s]
1	35	125.00	5,411.3	Lower Marker	43.00
2	262	101.74	588.4		65.77
3	273	37.59	208.6		66.77
4	305	50.57	251.0		69.65
5	325	46.50	216.5		71.27
6	341	46.05	204.8		72.49
7	354	39.69	169.8		73.59
8	370	40.18	164.5		74.85
9	386	24.09	94.6		76.12
10	401	33.64	127.2		77.30
11	435	13.33	46.4		79.22
12	443	21.89	74.9		79.66
13	478	13.01	41.2		81.63
14	514	40.58	119.6		83.51
15	563	12.19	32.8		85.82
16	590	13.42	34.5		87.09
17	669	15.81	35.8		89.71
18	695	15.55	33.9		90.50
19	877	15.53	26.8		92.90
20	1,010	10.86	16.3		94.52
21	1,668	8.83	8.0		98.80
22	1,775	6.08	5.2		99.50
23	2,058	3.70	2.7		101.16
24	10,380	75.00	10.9	Upper Marker	113.00
25	12,461	0.00	0.0		115.18

Assay Class: High Sensitivity DNA Assay  
 Data Path: C:\...oanalyzer\2015-07-16\2015-07-16\_001\_MiSeq\_135\_Libraries.xad

Created: 7/16/2015 9:09:17 AM  
 Modified: 7/16/2015 9:52:22 AM

### Electropherogram Summary Continued ...

#### ... Peak table for sample 2 : A1 Library (1:20)

Peak	Size [bp]	Conc. [pg/μl]	Molarity [pmol/l]	Observations	Aligned Migration Time [s]
26	13,543	0.00	0.0		116.32

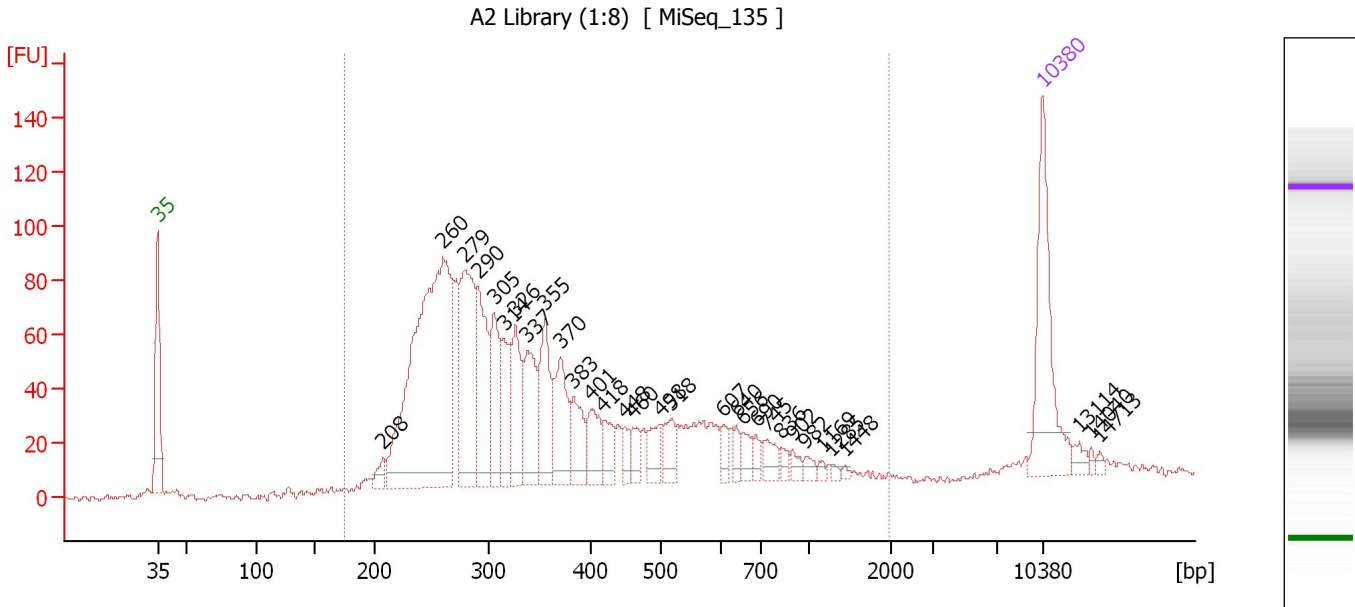
#### Region table for sample 2 : A1 Library (1:20)

From [bp]	Average Size [bp]	To [bp]	Corr. Area	Molarity [pmol/l]	Co % of lor Total	Size distribution in CV [%]	Conc. [pg/μl]
200	643	5,655	1,082.2	3,216.0	99	90.4	850.03

Assay Class: High Sensitivity DNA Assay  
 Data Path: C:\...oanalyzer\2015-07-16\2015-07-16\_001\_MiSeq\_135\_Libraries.xad

Created: 7/16/2015 9:09:17 AM  
 Modified: 7/16/2015 9:52:22 AM

**Electropherogram Summary Continued ...**



**Overall Results for sample 3 : A2 Library (1:8)**

Number of peaks found: 31                      Corr. Area 1: 1,841.6  
 Noise: 1.1

**Peak table for sample 3 : A2 Library (1:8)**

Peak	Size [bp]	Conc. [pg/μl]	Molarity [pmol/l]	Observations	Aligned Migration Time [s]
1	35	125.00	5,411.3	Lower Marker	43.00
2	208	11.95	87.1		60.84
3	260	386.70	2,255.0		65.57
4	279	128.15	695.5		67.33
5	290	84.12	439.0		68.35
6	305	63.75	316.8		69.63
7	314	48.56	234.1		70.38
8	326	54.36	252.8		71.31
9	337	58.64	263.3		72.24
10	355	61.05	260.5		73.65
11	370	52.79	215.9		74.89
12	383	33.06	130.8		75.90
13	401	30.60	115.6		77.32
14	418	21.01	76.2		78.24
15	448	11.39	38.6		79.92
16	460	12.73	42.0		80.58
17	498	19.77	60.1		82.75
18	518	21.51	63.0		83.68
19	607	8.72	21.8		87.78
20	640	8.27	19.6		88.80
21	656	11.34	26.2		89.28
22	690	7.37	16.2		90.34
23	745	13.62	27.7		91.23
24	836	5.26	9.5		92.38
25	902	5.95	10.0		93.21

Assay Class: High Sensitivity DNA Assay  
 Data Path: C:\...oanalyzer\2015-07-16\2015-07-16\_001\_MiSeq\_135\_Libraries.xad

Created: 7/16/2015 9:09:17 AM  
 Modified: 7/16/2015 9:52:22 AM

### Electropherogram Summary Continued ...

#### ... Peak table for sample 3 : A2 Library (1:8)

Peak	Size [bp]	Conc. [pg/μl]	Molarity [pmol/l]	Observations	Aligned Migration Time [s]
26	982	5.42	8.4		94.23
27	1,169	2.87	3.7		95.56
28	1,285	2.21	2.6		96.31
29	1,448	1.89	2.0		97.37
30	10,380	75.00	10.9	Upper Marker	113.00
31	13,114	0.00	0.0		115.87
32	14,040	0.00	0.0		116.84
33	14,713	0.00	0.0		117.55

#### Region table for sample 3 : A2 Library (1:8)

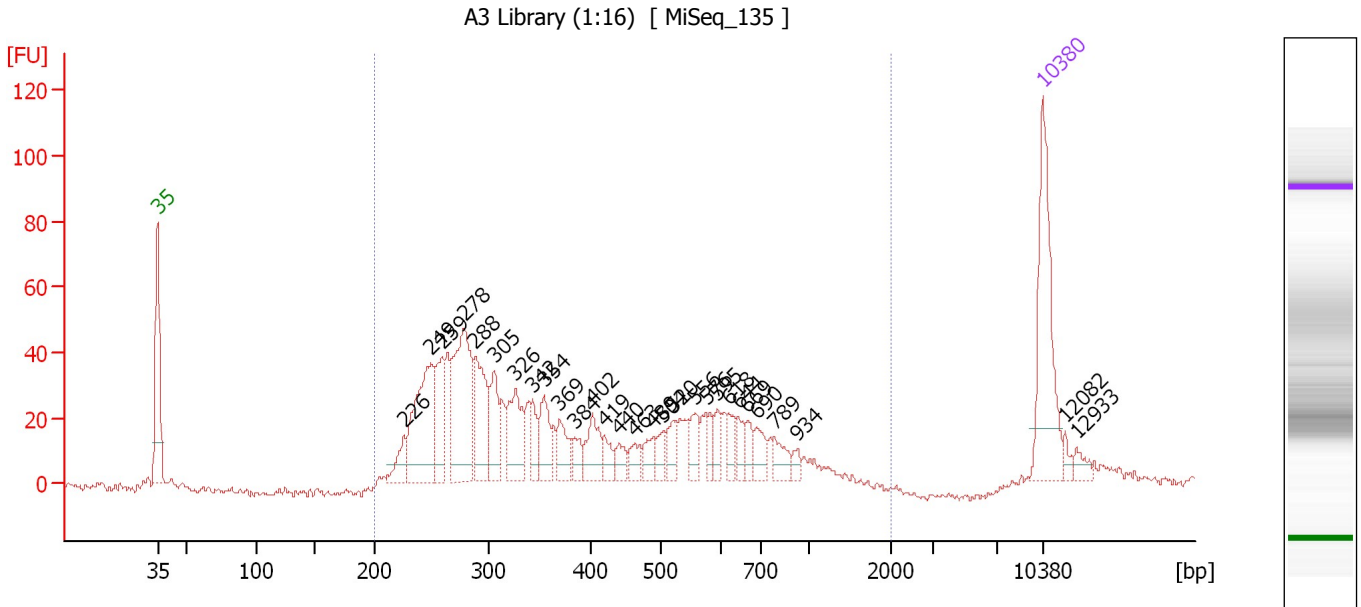
From [bp]	Average Size [bp]	To [bp]	Corr. Area	Molarity [pmol/l]	Co % of lor Total	Size distribution in CV [%]	Conc. [pg/μl]
175	396	1,988	1,841.6	6,540.9	96	55.0	1,375.62



Assay Class: High Sensitivity DNA Assay  
 Data Path: C:\...oanalyzer\2015-07-16\2015-07-16\_001\_MiSeq\_135\_Libraries.xad

Created: 7/16/2015 9:09:17 AM  
 Modified: 7/16/2015 9:52:22 AM

**Electropherogram Summary Continued ...**



**Overall Results for sample 4 : A3 Library (1:16)**

Number of peaks found: 29                      Corr. Area 1: 901.3  
 Noise: 1.1

**Peak table for sample 4 : A3 Library (1:16)**

Peak	Size [bp]	Conc. [pg/μl]	Molarity [pmol/l]	Observations	Aligned Migration Time [s]
1	35	125.00	5,411.3	Lower Marker	43.00
2	226	20.75	139.2		62.48
3	249	106.08	645.6		64.58
4	259	47.41	277.1		65.51
5	278	116.57	634.6		67.26
6	288	62.41	328.2		68.15
7	305	40.06	199.1		69.62
8	326	50.15	233.1		71.32
9	342	19.29	85.4		72.62
10	354	31.31	133.9		73.60
11	369	24.37	100.0		74.81
12	384	13.43	53.0		75.97
13	402	28.99	109.1		77.40
14	419	11.73	42.4		78.34
15	440	13.02	44.8		79.50
16	463	12.55	41.1		80.75
17	489	13.75	42.6		82.22
18	504	12.21	36.7		83.03
19	520	15.93	46.4		83.78
20	556	18.21	49.6		85.48
21	576	11.79	31.0		86.42
22	595	11.81	30.1		87.31
23	618	13.90	34.1		88.12
24	644	12.04	28.3		88.92
25	669	11.30	25.6		89.68

Assay Class: High Sensitivity DNA Assay  
 Data Path: C:\...oanalyzer\2015-07-16\2015-07-16\_001\_MiSeq\_135\_Libraries.xad

Created: 7/16/2015 9:09:17 AM  
 Modified: 7/16/2015 9:52:22 AM

### Electropherogram Summary Continued ...

#### ... Peak table for sample 4 : A3 Library (1:16)

Peak	Size [bp]	Conc. [pg/μl]	Molarity [pmol/l]	Observations	Aligned Migration Time [s]
26	690	15.65	34.4		90.35
27	789	15.41	29.6		91.78
28	934	5.77	9.4		93.61
29	10,380	75.00	10.9	Upper Marker	113.00
30	12,082	0.00	0.0		114.79
31	12,933	0.00	0.0		115.68

#### Region table for sample 4 : A3 Library (1:16)

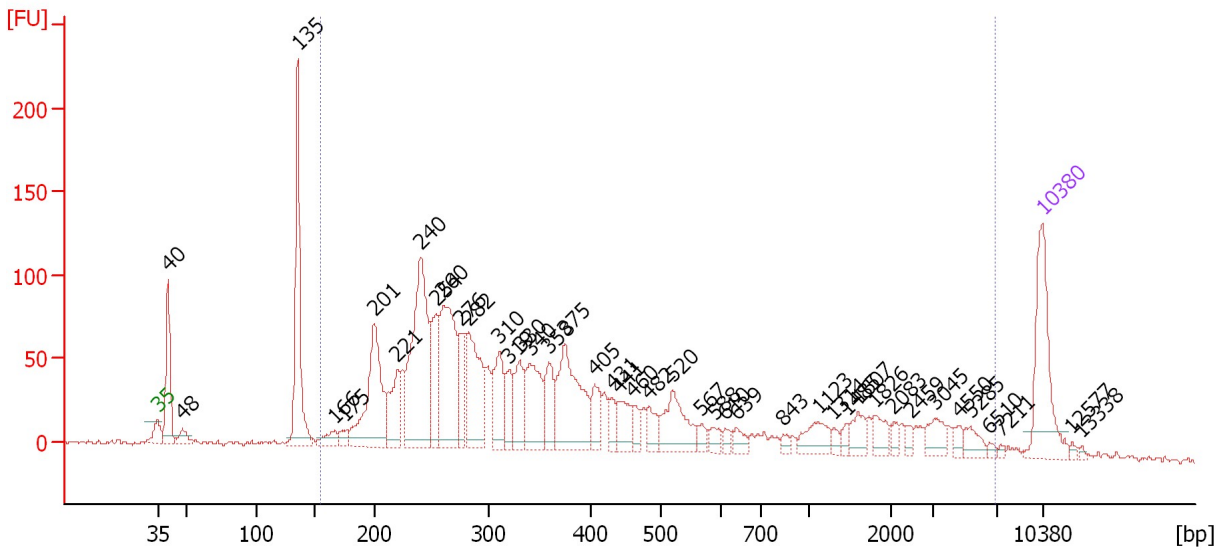
From [bp]	Average Size [bp]	To [bp]	Corr. Area	Molarity [pmol/l]	Co % of lor Total	Size distribution in CV [%]	Conc. [pg/μl]
200	414	2,025	901.3	3,879.3	98	44.3	860.00

Assay Class: High Sensitivity DNA Assay  
 Data Path: C:\...oanalyzer\2015-07-16\2015-07-16\_001\_MiSeq\_135\_Libraries.xad

Created: 7/16/2015 9:09:17 AM  
 Modified: 7/16/2015 9:52:22 AM

**Electropherogram Summary Continued ...**

A4 Library (1:5) [ MiSeq\_135 ]



**Overall Results for sample 5 : A4 Library (1:5)**

Number of peaks found: 43                      Corr. Area 1: 2,423.7  
 Noise: 1.3

**Peak table for sample 5 : A4 Library (1:5)**

Peak	Size [bp]	Conc. [pg/μl]	Molarity [pmol/l]	Observations	Aligned Migration Time [s]
1	35	125.00	5,411.3	Lower Marker	43.00
2	40	102.85	3,853.2		43.84
3	48	16.73	532.5		44.95
4	135	189.79	2,126.4		54.09
5	166	18.49	168.5		56.97
6	175	11.45	99.2		57.77
7	201	145.89	1,101.7		60.17
8	221	60.01	412.2		61.99
9	240	219.36	1,382.0		63.80
10	254	72.52	432.4		65.05
11	260	154.40	898.3		65.62
12	276	48.97	269.3		67.00
13	282	108.56	583.6		67.58
14	310	59.11	288.7		70.06
15	319	33.96	161.2		70.77
16	330	46.93	215.4		71.66
17	340	75.48	336.3		72.46
18	358	42.15	178.2		73.92
19	375	119.76	484.0		75.25
20	405	29.29	109.5		77.56
21	431	15.94	56.1		78.98
22	441	31.49	108.2		79.55
23	460	14.22	46.8		80.62
24	482	19.97	62.7		81.86
25	520	58.02	169.2		83.77

Assay Class: High Sensitivity DNA Assay  
 Data Path: C:\...oanalyzer\2015-07-16\2015-07-16\_001\_MiSeq\_135\_Libraries.xad

Created: 7/16/2015 9:09:17 AM  
 Modified: 7/16/2015 9:52:22 AM

**Electropherogram Summary Continued ...**

**... Peak table for sample 5 : A4 Library (1:5)**

Peak	Size [bp]	Conc. [pg/μl]	Molarity [pmol/l]	Observations	Aligned Migration Time [s]
26	567	9.19	24.5		86.03
27	588	11.38	29.3		87.01
28	610	7.49	18.6		87.89
29	639	11.48	27.2		88.78
30	843	5.78	10.4		92.46
31	1,123	25.56	34.5		95.26
32	1,314	6.03	7.0		96.50
33	1,485	6.41	6.5		97.61
34	1,607	16.74	15.8		98.41
35	1,826	16.13	13.4		99.83
36	2,083	7.01	5.1		101.24
37	2,459	5.64	3.5		102.53
38	3,045	17.30	8.6		104.44
39	4,550	7.34	2.4		106.35
40	5,285	12.09	3.5		107.28
41	6,510	3.20	0.7		108.83
42	7,211	2.06	0.4		109.67
43	10,380	75.00	10.9	Upper Marker	113.00
44	12,577	0.00	0.0		115.31
45	13,338	0.00	0.0		116.11

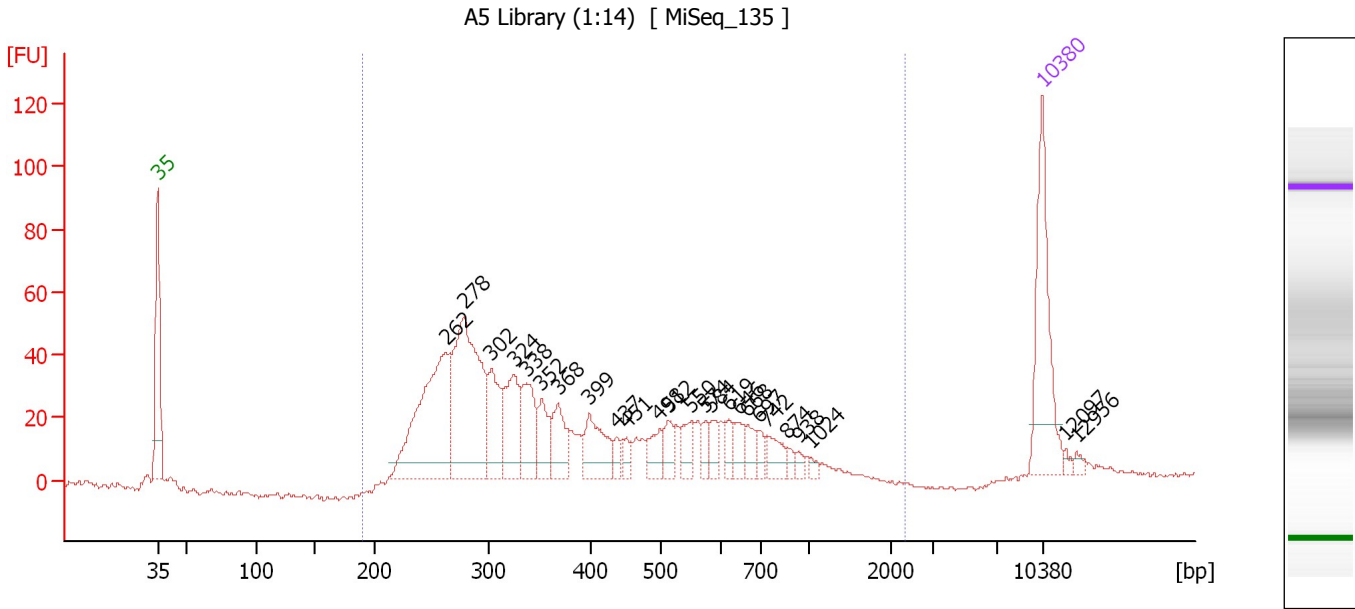
**Region table for sample 5 : A4 Library (1:5)**

From [bp]	Average Size [bp]	To [bp]	Corr. Area	Molarity [pmol/l]	Co % of Ior Total	Size distribution in CV [%]	Conc. [pg/μl]
155	735	6,879	2,423.7	8,279.2	85	100.0	1,722.70

Assay Class: High Sensitivity DNA Assay  
 Data Path: C:\...oanalyzer\2015-07-16\2015-07-16\_001\_MiSeq\_135\_Libraries.xad

Created: 7/16/2015 9:09:17 AM  
 Modified: 7/16/2015 9:52:22 AM

**Electropherogram Summary Continued ...**



**Overall Results for sample 6 : A5 Library (1:14)**

Number of peaks found: 25                      Corr. Area 1: 942.6  
 Noise: 0.6

**Peak table for sample 6 : A5 Library (1:14)**

Peak	Size [bp]	Conc. [pg/μl]	Molarity [pmol/l]	Observations	Aligned Migration Time [s]
1	35	125.00	5,411.3	Lower Marker	43.00
2	262	185.09	1,068.5		65.81
3	278	198.23	1,079.4		67.25
4	302	54.33	272.4		69.41
5	324	63.43	296.5		71.17
6	338	50.75	227.7		72.25
7	352	29.82	128.5		73.38
8	368	34.83	143.4		74.69
9	399	44.46	168.9		77.17
10	437	8.57	29.7		79.33
11	451	10.22	34.4		80.10
12	498	19.45	59.2		82.71
13	512	16.10	47.7		83.39
14	550	18.48	50.9		85.19
15	574	10.31	27.2		86.36
16	584	12.85	33.3		86.81
17	619	10.16	24.9		88.16
18	646	13.57	31.8		88.98
19	668	14.66	33.3		89.65
20	697	9.47	20.6		90.55
21	742	18.14	37.0		91.18
22	874	5.00	8.7		92.85
23	938	4.96	8.0		93.66
24	1,024	3.83	5.7		94.61
25	10,380	75.00	10.9	Upper Marker	113.00

Assay Class: High Sensitivity DNA Assay  
 Data Path: C:\...oanalyzer\2015-07-16\2015-07-16\_001\_MiSeq\_135\_Libraries.xad


Created: 7/16/2015 9:09:17 AM  
 Modified: 7/16/2015 9:52:22 AM

### Electropherogram Summary Continued ...

#### ... Peak table for sample 6 : A5 Library (1:14)

Peak	Size [bp]	Conc. [pg/μl]	Molarity [pmol/l]	Observations	Aligned Migration Time [s]
26	12,097	0.00	0.0		114.80
27	12,956	0.00	0.0		115.70

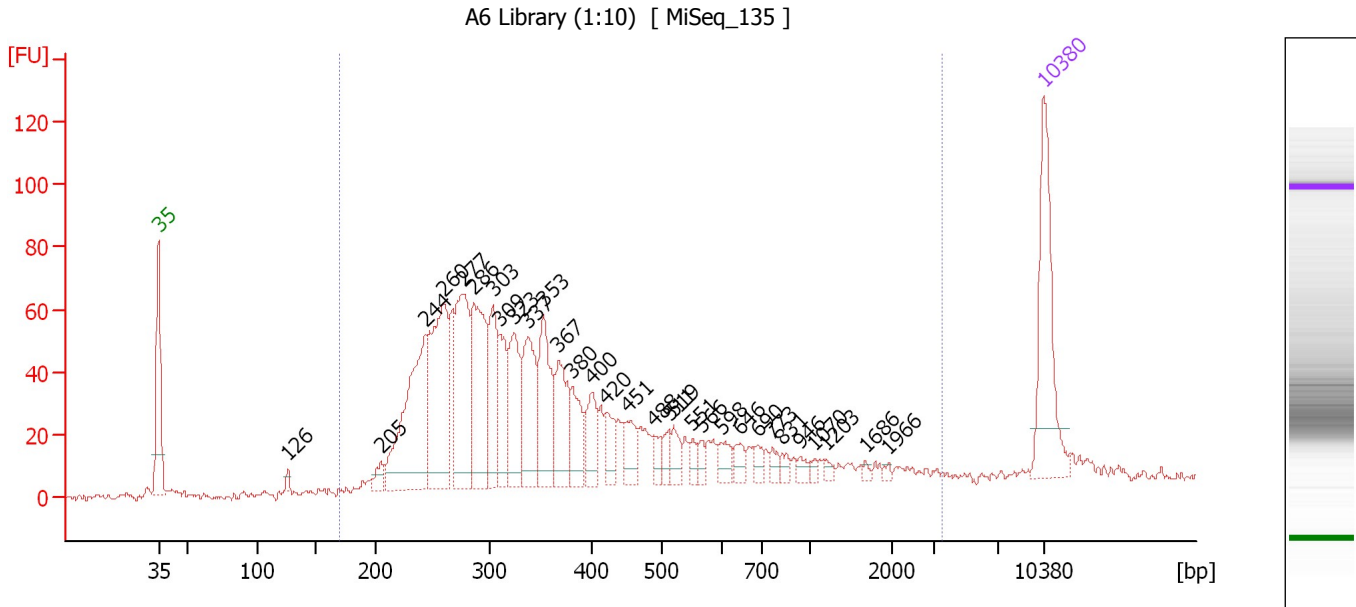
#### Region table for sample 6 : A5 Library (1:14)

From [bp]	Average Size [bp]	To [bp]	Corr. Area	Molarity [pmol/l]	Co % of lor Total	Size distribution in CV [%]	Conc. [pg/μl]
191	411	2,355	942.6	4,028.2	 98	44.5	895.56

Assay Class: High Sensitivity DNA Assay  
 Data Path: C:\...oanalyzer\2015-07-16\2015-07-16\_001\_MiSeq\_135\_Libraries.xad

Created: 7/16/2015 9:09:17 AM  
 Modified: 7/16/2015 9:52:22 AM

**Electropherogram Summary Continued ...**



**Overall Results for sample 7 : A6 Library (1:10)**

Number of peaks found: 31                      Corr. Area 1: 1,475.5  
 Noise: 0.9

**Peak table for sample 7 : A6 Library (1:10)**

Peak	Size [bp]	Conc. [pg/μl]	Molarity [pmol/l]	Observations	Aligned Migration Time [s]
1	35	125.00	5,411.3	Lower Marker	43.00
2	126	5.20	62.4		53.25
3	205	11.60	85.6		60.59
4	244	154.26	959.0		64.10
5	260	142.62	830.4		65.60
6	277	118.05	646.4		67.11
7	286	109.01	578.2		67.93
8	303	65.64	328.2		69.48
9	309	47.68	234.0		69.93
10	323	67.15	314.5		71.12
11	337	70.46	316.7		72.21
12	353	72.72	312.1		73.49
13	367	54.82	226.2		74.63
14	380	35.37	140.9		75.68
15	400	31.40	118.9		77.27
16	420	21.16	76.4		78.36
17	451	23.25	78.1		80.10
18	488	9.51	29.5		82.19
19	511	10.71	31.7		83.38
20	519	14.55	42.5		83.74
21	551	8.31	22.9		85.25
22	566	7.34	19.6		85.98
23	598	13.29	33.7		87.48
24	646	11.17	26.2		88.98
25	690	7.05	15.5		90.35

Assay Class: High Sensitivity DNA Assay  
 Data Path: C:\...oanalyzer\2015-07-16\2015-07-16\_001\_MiSeq\_135\_Libraries.xad

Created: 7/16/2015 9:09:17 AM  
 Modified: 7/16/2015 9:52:22 AM

### Electropherogram Summary Continued ...

#### ... Peak table for sample 7 : A6 Library (1:10)

Peak	Size [bp]	Conc. [pg/μl]	Molarity [pmol/l]	Observations	Aligned Migration Time [s]
26	773	6.88	13.5		91.58
27	831	5.77	10.5		92.31
28	946	5.27	8.4		93.77
29	1,070	3.22	4.6		94.91
30	1,203	4.03	5.1		95.77
31	1,686	2.36	2.1		98.92
32	1,966	2.10	1.6		100.74
33	10,380	75.00	10.9	Upper Marker	113.00

#### Region table for sample 7 : A6 Library (1:10)

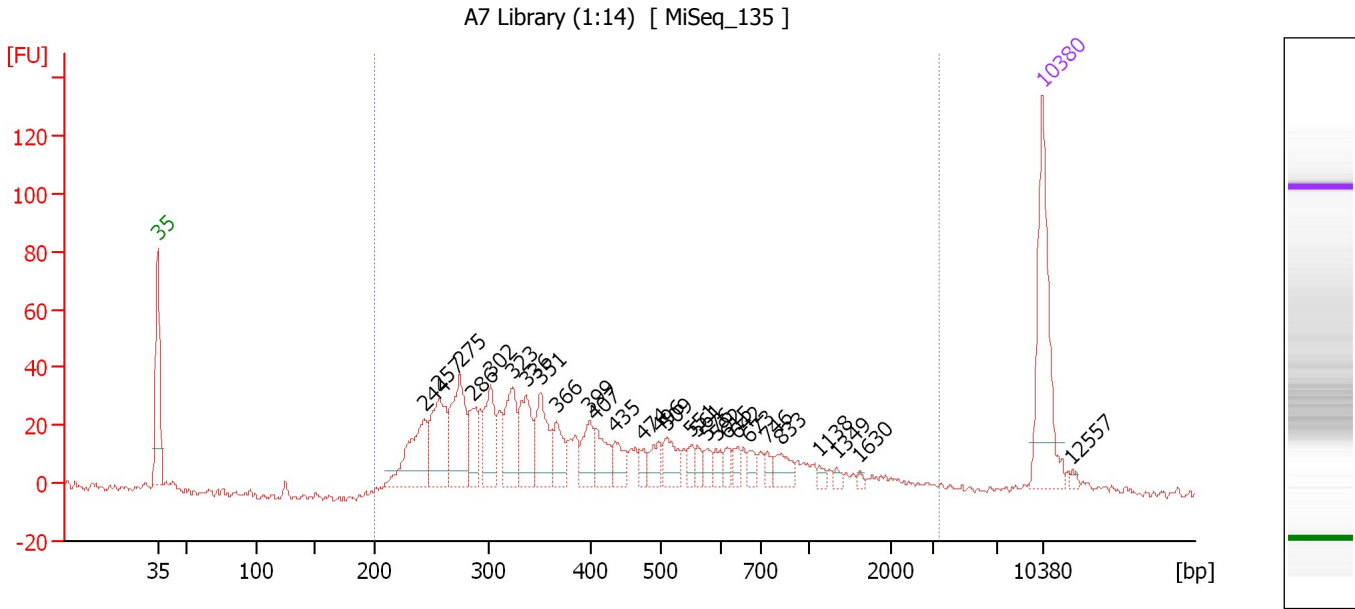
From [bp]	Average Size [bp]	To [bp]	Corr. Area	Molarity [pmol/l]	Co % of Ior Total	Size distribution in CV [%]	Conc. [pg/μl]
170	436	3,519	1,475.5	6,214.9	96	82.0	1,326.42



Assay Class: High Sensitivity DNA Assay  
 Data Path: C:\...oanalyzer\2015-07-16\2015-07-16\_001\_MiSeq\_135\_Libraries.xad

Created: 7/16/2015 9:09:17 AM  
 Modified: 7/16/2015 9:52:22 AM

**Electropherogram Summary Continued ...**



**Overall Results for sample 8 : A7 Library (1:14)**

Number of peaks found: 28                      Corr. Area 1: 893.7  
 Noise: 1.3

**Peak table for sample 8 : A7 Library (1:14)**

Peak	Size [bp]	Conc. [pg/μl]	Molarity [pmol/l]	Observations	Aligned Migration Time [s]
1	35	125.00	5,411.3	Lower Marker	43.00
2	244	67.60	419.8		64.12
3	257	68.43	404.2		65.27
4	275	74.85	413.1		66.91
5	286	28.85	152.8		67.96
6	302	44.33	222.5		69.38
7	323	48.10	225.7		71.07
8	336	46.81	211.1		72.12
9	351	43.93	189.7		73.31
10	366	27.61	114.2		74.55
11	399	25.33	96.3		77.15
12	407	25.74	95.8		77.66
13	435	17.47	60.8		79.21
14	474	8.00	25.5		81.41
15	496	16.17	49.4		82.64
16	509	21.91	65.2		83.28
17	551	9.22	25.3		85.25
18	561	7.61	20.6		85.70
19	576	8.76	23.0		86.44
20	592	8.92	22.8		87.17
21	615	7.68	18.9		88.04
22	642	7.35	17.3		88.86
23	673	8.72	19.6		89.82
24	746	6.08	12.4		91.24
25	833	15.32	27.9		92.33

Assay Class: High Sensitivity DNA Assay  
 Data Path: C:\...oanalyzer\2015-07-16\2015-07-16\_001\_MiSeq\_135\_Libraries.xad

Created: 7/16/2015 9:09:17 AM  
 Modified: 7/16/2015 9:52:22 AM

**Electropherogram Summary Continued ...**

**... Peak table for sample 8 : A7 Library (1:14)**

Peak	Size [bp]	Conc. [pg/μl]	Molarity [pmol/l]	Observations	Aligned Migration Time [s]
26	1,138	3.45	4.6		95.35
27	1,349	3.04	3.4		96.72
28	1,630	2.13	2.0		98.55
29	10,380	75.00	10.9	Upper Marker	113.00
30	12,557	0.00	0.0		115.29

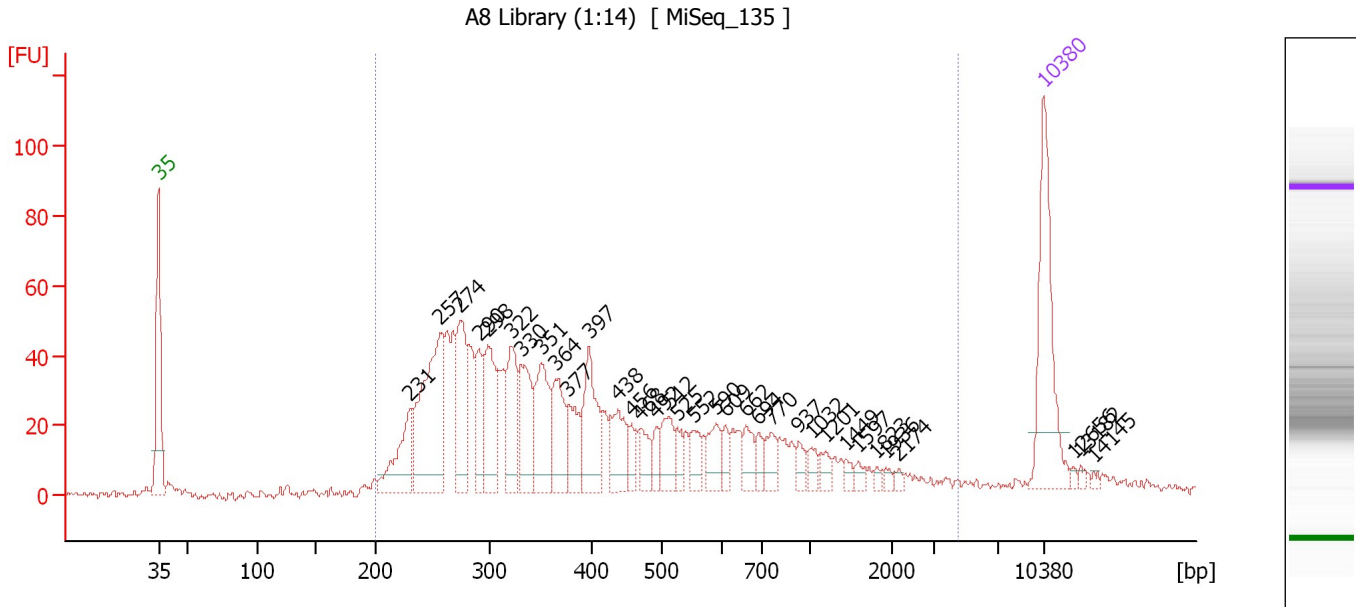
**Region table for sample 8 : A7 Library (1:14)**

From [bp]	Average Size [bp]	To [bp]	Corr. Area	Molarity [pmol/l]	Co % of lor Total	Size distribution in CV [%]	Conc. [pg/μl]
200	506	3,368	893.7	3,379.7	97	77.7	794.28

Assay Class: High Sensitivity DNA Assay  
 Data Path: C:\...oanalyzer\2015-07-16\2015-07-16\_001\_MiSeq\_135\_Libraries.xad

Created: 7/16/2015 9:09:17 AM  
 Modified: 7/16/2015 9:52:22 AM

**Electropherogram Summary Continued ...**



**Overall Results for sample 9 : A8 Library (1:14)**

Number of peaks found: 34                      Corr. Area 1: 1,260.4  
 Noise: 0.9

**Peak table for sample 9 : A8 Library (1:14)**

Peak	Size [bp]	Conc. [pg/μl]	Molarity [pmol/l]	Observations	Aligned Migration Time [s]
1	35	125.00	5,411.3	Lower Marker	43.00
2	231	59.95	393.9		62.90
3	257	145.35	857.6		65.29
4	274	69.58	384.9		66.85
5	290	40.24	210.2		68.33
6	298	63.50	323.3		69.01
7	322	53.74	253.0		70.99
8	330	55.84	256.0		71.68
9	351	63.43	274.2		73.29
10	364	47.47	197.5		74.39
11	377	31.47	126.5		75.40
12	397	58.10	221.5		77.06
13	438	37.67	130.4		79.36
14	456	12.80	42.6		80.37
15	468	18.27	59.1		81.06
16	492	12.29	37.8		82.39
17	512	27.12	80.3		83.40
18	525	11.95	34.5		84.00
19	552	15.89	43.6		85.28
20	590	21.96	56.4		87.08
21	609	10.19	25.3		87.86
22	662	16.42	37.6		89.47
23	694	9.83	21.4		90.48
24	770	15.30	30.1		91.54
25	937	7.90	12.8		93.65

Assay Class: High Sensitivity DNA Assay  
 Data Path: C:\...oanalyzer\2015-07-16\2015-07-16\_001\_MiSeq\_135\_Libraries.xad

Created: 7/16/2015 9:09:17 AM  
 Modified: 7/16/2015 9:52:22 AM

**Electropherogram Summary Continued ...**

**... Peak table for sample 9 : A8 Library (1:14)**

Peak	Size [bp]	Conc. [pg/μl]	Molarity [pmol/l]	Observations	Aligned Migration Time [s]
26	1,032	7.74	11.4		94.66
27	1,201	8.15	10.3		95.76
28	1,449	5.13	5.4		97.37
29	1,597	4.70	4.5		98.34
30	1,823	3.03	2.5		99.81
31	1,936	2.99	2.3		100.54
32	2,174	2.80	1.9		101.56
33	10,380	75.00	10.9	Upper Marker	113.00
34	12,656	0.00	0.0		115.39
35	13,182	0.00	0.0		115.94
36	14,145	0.00	0.0		116.95

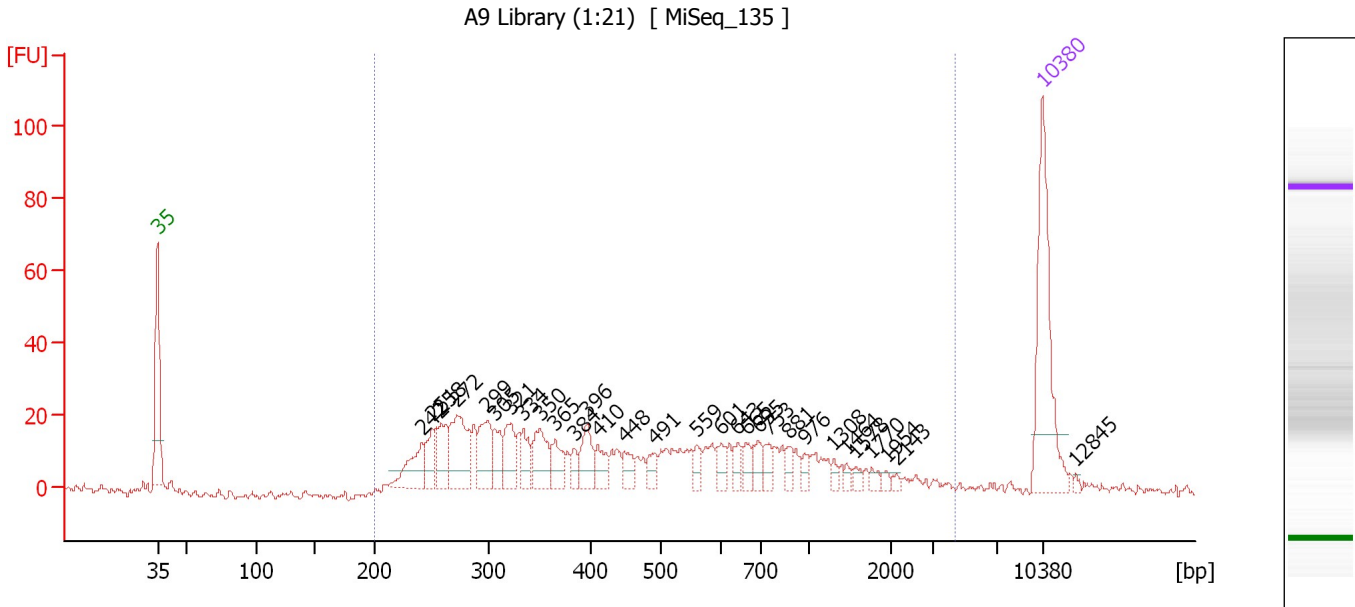
**Region table for sample 9 : A8 Library (1:14)**

From [bp]	Average Size [bp]	To [bp]	Corr. Area	Molarity [pmol/l]	Co % of lor Total	Size distribution in CV [%]	Conc. [pg/μl]
200	512	4,482	1,260.4	5,211.9	96	87.9	1,198.24

Assay Class: High Sensitivity DNA Assay  
 Data Path: C:\...oanalyzer\2015-07-16\2015-07-16\_001\_MiSeq\_135\_Libraries.xad

Created: 7/16/2015 9:09:17 AM  
 Modified: 7/16/2015 9:52:22 AM

**Electropherogram Summary Continued ...**



**Overall Results for sample 10 : A9 Library (1:21)**

Number of peaks found: 30                      Corr. Area 1: 597.9  
 Noise: 1.3

**Peak table for sample 10 : A9 Library (1:21)**

Peak	Size [bp]	Conc. [pg/μl]	Molarity [pmol/l]	Observations	Aligned Migration Time [s]
1	35	125.00	5,411.3	Lower Marker	43.00
2	242	32.73	205.0		63.93
3	251	21.06	127.1		64.76
4	258	27.47	161.3		65.41
5	272	55.55	309.7		66.66
6	299	34.46	174.9		69.11
7	305	18.79	93.2		69.66
8	321	26.31	124.0		70.95
9	334	19.12	86.9		71.92
10	350	30.40	131.5		73.26
11	365	18.02	74.8		74.47
12	384	8.33	32.9		75.99
13	396	22.59	86.4		76.96
14	410	14.39	53.1		77.84
15	448	11.61	39.2		79.96
16	491	10.56	32.6		82.32
17	559	7.70	20.9		85.65
18	601	10.62	26.8		87.59
19	643	8.38	19.8		88.88
20	665	10.84	24.7		89.57
21	695	10.55	23.0		90.50
22	753	8.29	16.7		91.33
23	881	7.23	12.4		92.95
24	976	5.65	8.8		94.15
25	1,308	3.85	4.5		96.46

Assay Class: High Sensitivity DNA Assay  
 Data Path: C:\...oanalyzer\2015-07-16\2015-07-16\_001\_MiSeq\_135\_Libraries.xad

Created: 7/16/2015 9:09:17 AM  
 Modified: 7/16/2015 9:52:22 AM

### Electropherogram Summary Continued ...

#### ... Peak table for sample 10 : A9 Library (1:21)

Peak	Size [bp]	Conc. [pg/μl]	Molarity [pmol/l]	Observations	Aligned Migration Time [s]
26	1,464	3.25	3.4		97.48
27	1,578	4.02	3.9		98.21
28	1,770	3.90	3.3		99.46
29	1,954	2.88	2.2		100.66
30	2,143	2.15	1.5		101.45
31	10,380	75.00	10.9	Upper Marker	113.00
32	12,845	0.00	0.0		115.59

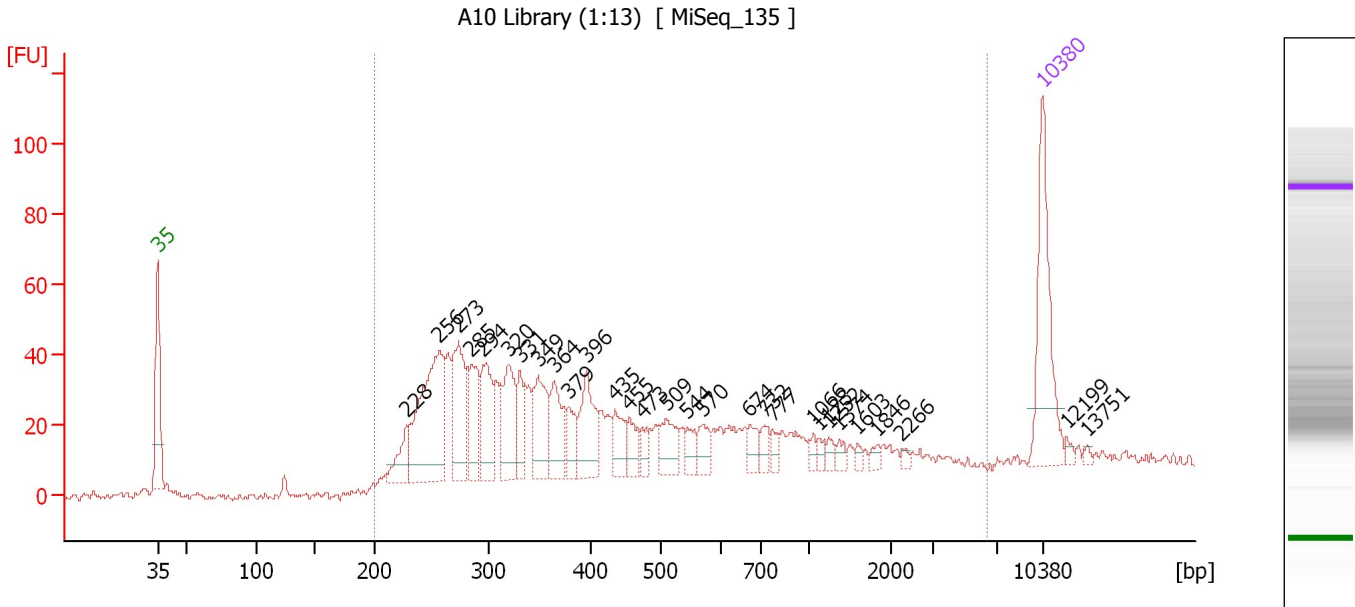
#### Region table for sample 10 : A9 Library (1:21)

From [bp]	Average Size [bp]	To [bp]	Corr. Area	Molarity [pmol/l]	Co % of lor Total	Size distribution in CV [%]	Conc. [pg/μl]
200	597	4,395	597.9	2,360.0	97	83.0	594.70

Assay Class: High Sensitivity DNA Assay  
 Data Path: C:\...oanalyzer\2015-07-16\2015-07-16\_001\_MiSeq\_135\_Libraries.xad

Created: 7/16/2015 9:09:17 AM  
 Modified: 7/16/2015 9:52:22 AM

**Electropherogram Summary Continued ...**



**Overall Results for sample 11 : A10 Library (1:13)**

Number of peaks found: 29                      Corr. Area 1: 975.9  
 Noise: 1.3

**Peak table for sample 11 : A10 Library (1:13)**

Peak	Size [bp]	Conc. [pg/μl]	Molarity [pmol/l]	Observations	Aligned Migration Time [s]
1	35	125.00	5,411.3	Lower Marker	43.00
2	228	30.30	201.0		62.70
3	256	153.24	905.3		65.26
4	273	81.99	454.5		66.80
5	285	46.29	246.5		67.82
6	294	59.55	306.7		68.71
7	320	58.11	275.5		70.80
8	331	30.27	138.7		71.69
9	349	56.22	244.4		73.13
10	364	44.71	186.0		74.39
11	379	22.02	88.1		75.55
12	396	52.95	202.5		76.95
13	435	25.71	89.6		79.19
14	455	18.56	61.9		80.31
15	473	12.95	41.5		81.33
16	509	28.36	84.5		83.24
17	544	13.59	37.9		84.92
18	570	17.22	45.8		86.13
19	674	13.44	30.2		89.85
20	732	11.18	23.1		91.06
21	777	8.62	16.8		91.62
22	1,066	5.30	7.5		94.88
23	1,123	5.31	7.2		95.26
24	1,252	6.05	7.3		96.09
25	1,374	5.72	6.3		96.89

Assay Class: High Sensitivity DNA Assay  
 Data Path: C:\...oanalyzer\2015-07-16\2015-07-16\_001\_MiSeq\_135\_Libraries.xad

Created: 7/16/2015 9:09:17 AM  
 Modified: 7/16/2015 9:52:22 AM

### Electropherogram Summary Continued ...

#### ... Peak table for sample 11 : A10 Library (1:13)

Peak	Size [bp]	Conc. [pg/μl]	Molarity [pmol/l]	Observations	Aligned Migration Time [s]
26	1,603	3.81	3.6		98.38
27	1,846	4.58	3.8		99.96
28	2,266	3.16	2.1		101.87
29	10,380	75.00	10.9	Upper Marker	113.00
30	12,199	0.00	0.0		114.91
31	13,751	0.00	0.0		116.54

#### Region table for sample 11 : A10 Library (1:13)

From [bp]	Average Size [bp]	To [bp]	Corr. Area	Molarity [pmol/l]	Co % of lor Total	Size distribution in CV [%]	Conc. [pg/μl]
200	535	6,281	975.9	4,686.8	98	96.7	1,084.38



Assay Class: High Sensitivity DNA Assay  
Data Path: C:\...oanalyzer\2015-07-16\2015-07-16\_001\_MiSeq\_135\_Libraries.xad

Created: 7/16/2015 9:09:17 AM  
Modified: 7/16/2015 9:52:22 AM

**Gel Image**

