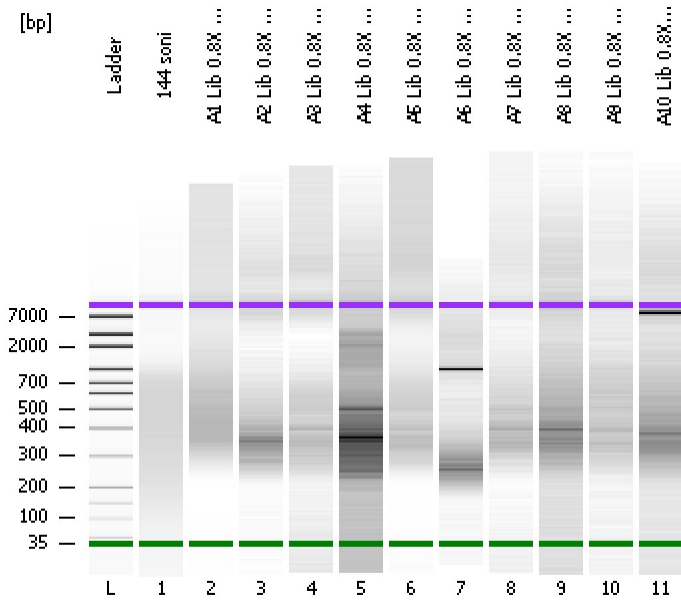


Assay Class: High Sensitivity DNA Assay
Data Path: C:\...ents and Settings\Bioanalyzer\2015-07-16\2015-07-16_003.xad

Created: 7/16/2015 1:46:52 PM
Modified: 7/16/2015 2:34:51 PM

Electrophoresis File Run Summary



Instrument Information:

Instrument Name: DE13701086 Firmware: C.01.069
Serial#: DE13701086 Type: G2938B

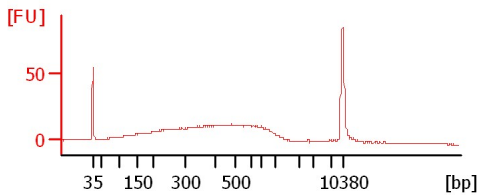
Assay Information:

Assay Origin Path: C:\Program Files\Agilent\2100 bioanalyzer\2100 expert\assays\dsDNA\High Sensitivity DNA.xsy
Assay Class: High Sensitivity DNA Assay
Version: 1.03
Assay Comments: Copyright © 2003-2010 Agilent Technologies

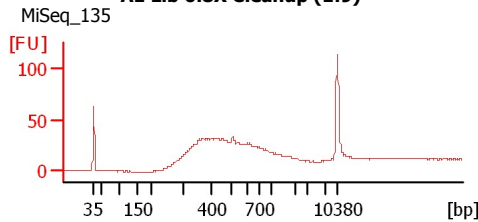
Chip Information:

Chip Lot #:
Reagent Kit Lot #:
Chip Comments:

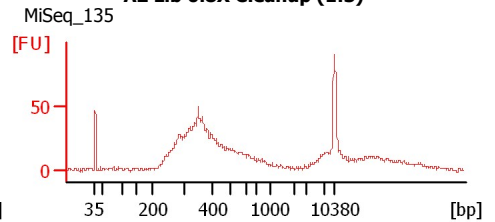
144 soni



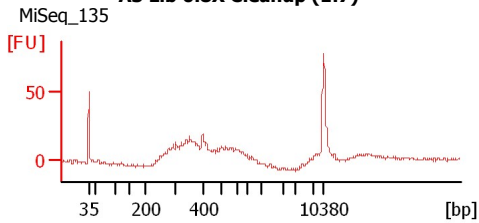
A1 Lib 0.8X Cleanup (1:9)



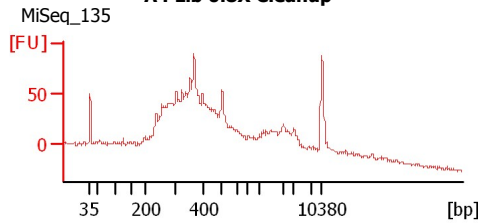
A2 Lib 0.8X Cleanup (1:3)



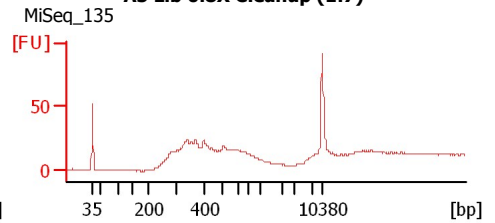
A3 Lib 0.8X Cleanup (1:7)



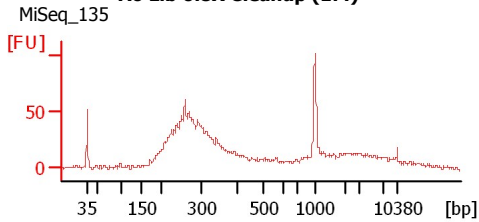
A4 Lib 0.8X Cleanup



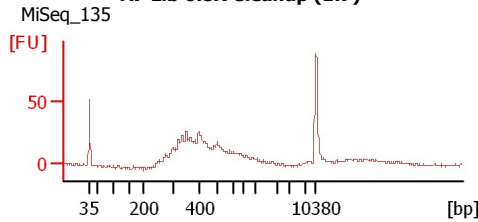
A5 Lib 0.8X Cleanup (1:7)



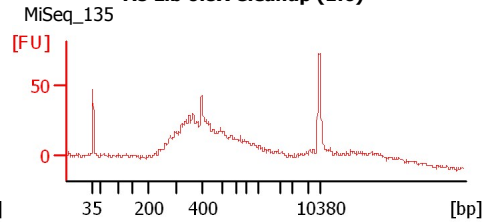
A6 Lib 0.8X Cleanup (1:4)



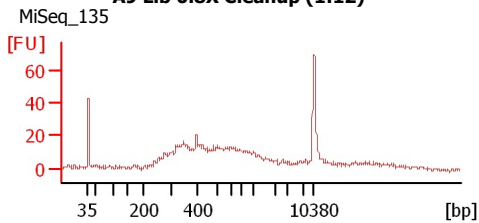
A7 Lib 0.8X Cleanup (1:7)



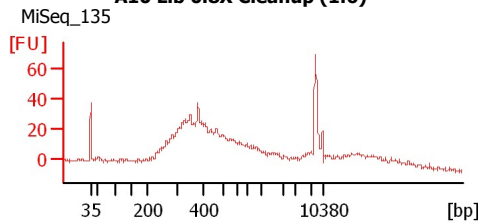
A8 Lib 0.8X Cleanup (1:6)



A9 Lib 0.8X Cleanup (1:12)



A10 Lib 0.8X Cleanup (1:6)



Assay Class: High Sensitivity DNA Assay
 Data Path: C:\...ents and Settings\Bioanalyzer\2015-07-16\2015-07-16_003.xad

Created: 7/16/2015 1:46:52 PM
 Modified: 7/16/2015 2:34:51 PM

Electrophoresis File Run Summary (Chip Summary)

Sample Name	Sample Comment	Rest. Digest	Status	Observation	Result Label	Result Color
144 soni		<input type="checkbox"/>				
A1 Lib 0.8X Cleanup (1:9)	MiSeq_135	<input type="checkbox"/>		✓		
A2 Lib 0.8X Cleanup (1:3)	MiSeq_135	<input type="checkbox"/>		✓		
A3 Lib 0.8X Cleanup (1:7)	MiSeq_135	<input type="checkbox"/>		✓		
A4 Lib 0.8X Cleanup	MiSeq_135	<input type="checkbox"/>		✓		
A5 Lib 0.8X Cleanup (1:7)	MiSeq_135	<input type="checkbox"/>		✓		
A6 Lib 0.8X Cleanup (1:4)	MiSeq_135	<input type="checkbox"/>		✓		
A7 Lib 0.8X Cleanup (1:7)	MiSeq_135	<input type="checkbox"/>		✓		
A8 Lib 0.8X Cleanup (1:6)	MiSeq_135	<input type="checkbox"/>		✓		
A9 Lib 0.8X Cleanup (1:12)	MiSeq_135	<input type="checkbox"/>		✓		
A10 Lib 0.8X Cleanup (1:6)	MiSeq_135	<input type="checkbox"/>		✓		
Ladder		<input type="checkbox"/>		✓		

Chip Lot #

Reagent Kit Lot #

Chip Comments :

Assay Class: High Sensitivity DNA Assay
Data Path: C:\...ents and Settings\Bioanalyzer\2015-07-16\2015-07-16_003.xad

Created: 7/16/2015 1:46:52 PM
Modified: 7/16/2015 2:34:51 PM

Electrophoresis Assay Details

General Analysis Settings

Number of Available Sample and Ladder Wells (Max.) : 12
Minimum Visible Range [s] : 32
Maximum Visible Range [s] : 138
Start Analysis Time Range [s] : 33
End Analysis Time Range [s] : 137.5
Ladder Concentration [pg/μl] : 1950
Uses Standard Area for Ladder Fragments
Lower Marker Concentration [pg/μl] : 125
Upper Marker Concentration [pg/μl] : 75
Used Upper Marker for Quantitation
Standard Curve Fit is Point to Point
Show Data Aligned to Lower and Upper Marker

Integrator Settings

Integration Start Time [s] : 33.05
Integration End Time [s] : 137
Slope Threshold : 0.8
Height Threshold [FU] : 5
Area Threshold : 0.1
Width Threshold [s] : 0.6
Baseline Plateau [s] : 0.5

Filter Settings

Filter Width [s] : 0.5
Polynomial Order : 4

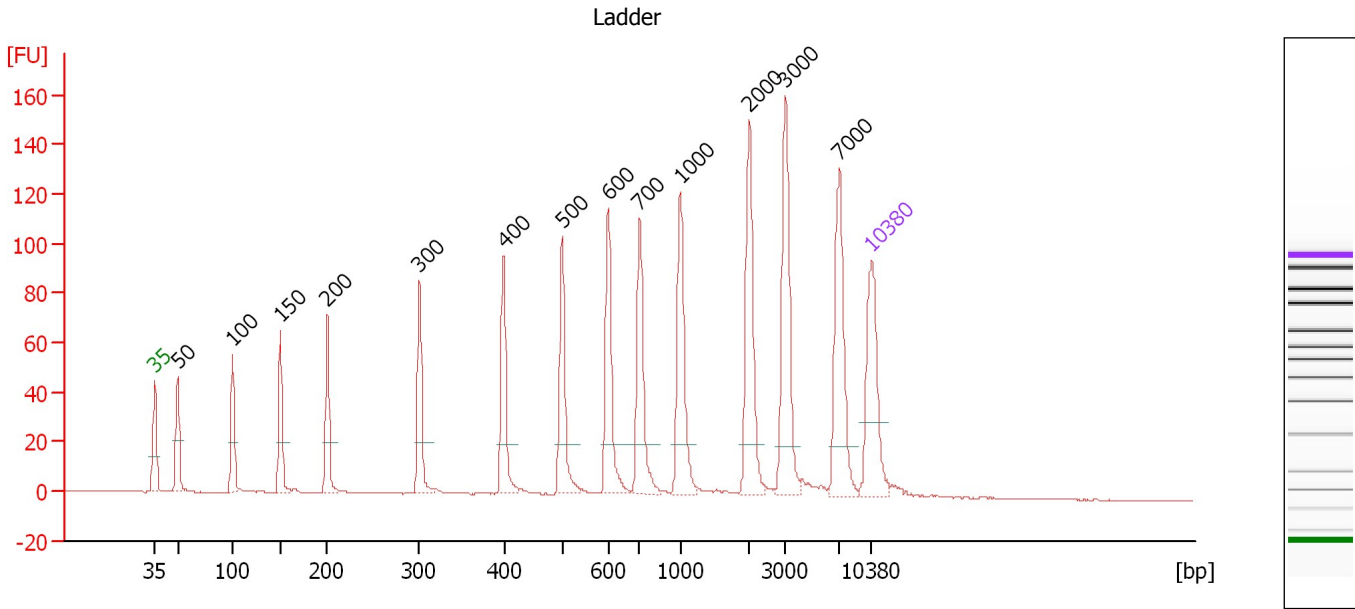
Ladder

Ladder Peak	Size	Area
1	35	160
2	50	210
3	100	208
4	150	221
5	200	242
6	300	270
7	400	305
8	500	306
9	600	336
10	700	321
11	1000	366
12	2000	413
13	3000	411
14	7000	400
15	10380	214

Assay Class: High Sensitivity DNA Assay
 Data Path: C:\...ents and Settings\Bioanalyzer\2015-07-16\2015-07-16_003.xad

Created: 7/16/2015 1:46:52 PM
 Modified: 7/16/2015 2:34:51 PM

Electropherogram Summary



Overall Results for Ladder

Noise: 0.1

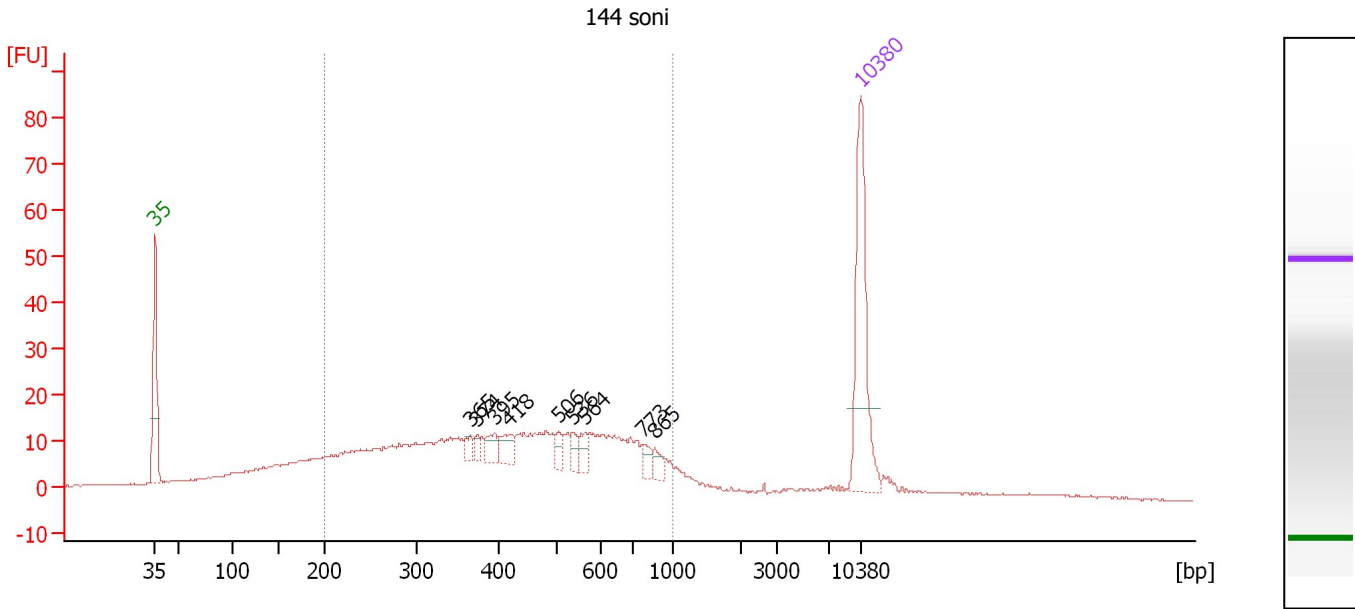
Peak table for Ladder

Peak	Size [bp]	Conc. [pg/μl]	Molarity [pmol/l]	Observations	Aligned Migration Time [s]
1	35	125.00	5,411.3	Lower Marker	43.00
2	50	150.00	4,545.5	Ladder Peak	45.24
3	100	150.00	2,272.7	Ladder Peak	50.65
4	150	150.00	1,515.2	Ladder Peak	55.28
5	200	150.00	1,136.4	Ladder Peak	59.86
6	300	150.00	757.6	Ladder Peak	68.87
7	400	150.00	568.2	Ladder Peak	77.09
8	500	150.00	454.5	Ladder Peak	82.76
9	600	150.00	378.8	Ladder Peak	87.29
10	700	150.00	324.7	Ladder Peak	90.36
11	1,000	150.00	227.3	Ladder Peak	94.32
12	2,000	150.00	113.6	Ladder Peak	101.08
13	3,000	150.00	75.8	Ladder Peak	104.62
14	7,000	150.00	32.5	Ladder Peak	109.88
15	10,380	75.00	10.9	Upper Marker	113.00

Assay Class: High Sensitivity DNA Assay
 Data Path: C:\...ents and Settings\Bioanalyzer\2015-07-16\2015-07-16_003.xad

Created: 7/16/2015 1:46:52 PM
 Modified: 7/16/2015 2:34:51 PM

Electropherogram Summary Continued ...



Overall Results for sample 1 : 144 soni

Number of peaks found: 9 Corr. Area 1: 483.7
 Noise: 0.2

Peak table for sample 1 : 144 soni

Peak	Size [bp]	Conc. [pg/μl]	Molarity [pmol/l]	Observations	Aligned Migration Time [s]
1	35	125.00	5,411.3	Lower Marker	43.00
2	365	6.77	28.1		74.25
3	374	6.41	25.9		74.99
4	395	11.76	45.1		76.68
5	418	13.97	50.7		78.11
6	506	7.65	22.9		83.02
7	536	8.62	24.4		84.40
8	564	9.46	25.4		85.67
9	773	8.77	17.2		91.32
10	865	7.20	12.6		92.54
11	10,380	75.00	10.9	Upper Marker	113.00

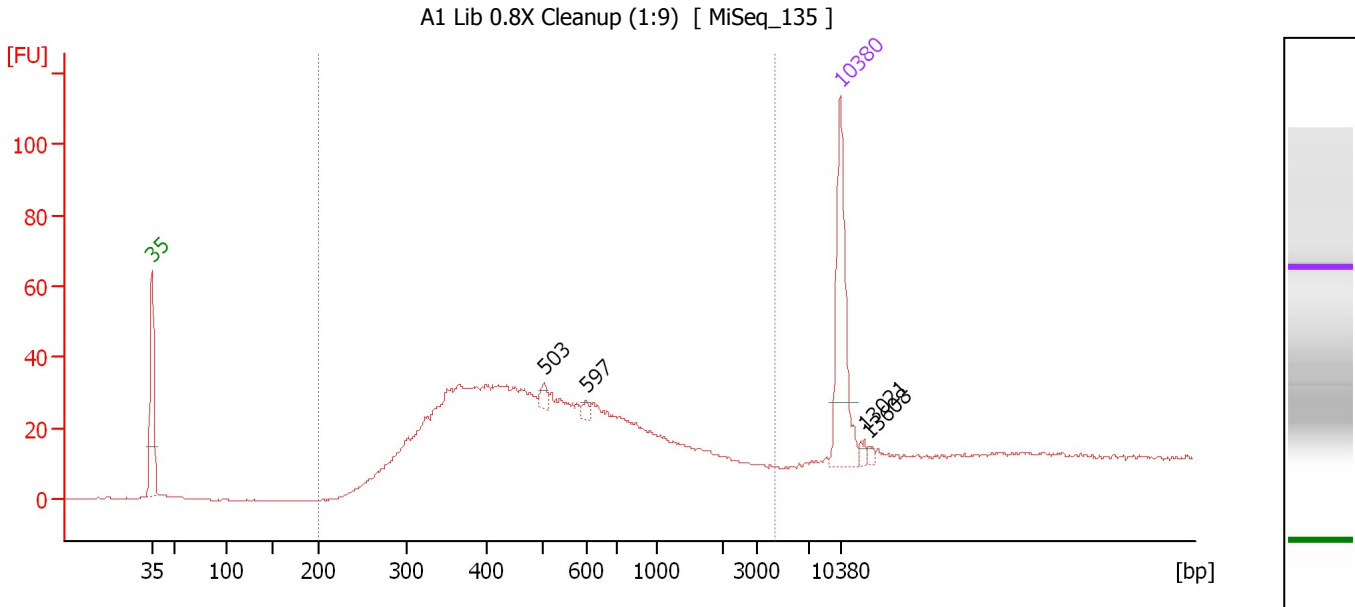
Region table for sample 1 : 144 soni

From [bp]	Average Size [bp]	To [bp]	Corr. Area	Molarity [pmol/l]	Co % of Ior Total	Size distribution in CV [%]	Conc. [pg/μl]
200	458	1,000	483.7	2,422.4	74	39.2	590.79

Assay Class: High Sensitivity DNA Assay
 Data Path: C:\...ents and Settings\Bioanalyzer\2015-07-16\2015-07-16_003.xad

Created: 7/16/2015 1:46:52 PM
 Modified: 7/16/2015 2:34:51 PM

Electropherogram Summary Continued ...



Overall Results for sample 2 : A1 Lib 0.8X Cleanup (1:9)

Number of peaks found: 4 Corr. Area 1: 782.1
 Noise: 0.2

Peak table for sample 2 : A1 Lib 0.8X Cleanup (1:9)

Peak	Size [bp]	Conc. [pg/μl]	Molarity [pmol/l]	Observations	Aligned Migration Time [s]
1	35	125.00	5,411.3	Lower Marker	43.00
2	503	7.50	22.6		82.91
3	597	4.71	12.0		87.14
4	10,380	75.00	10.9	Upper Marker	113.00
5	13,021	0.00	0.0		115.44
6	13,608	0.00	0.0		115.98

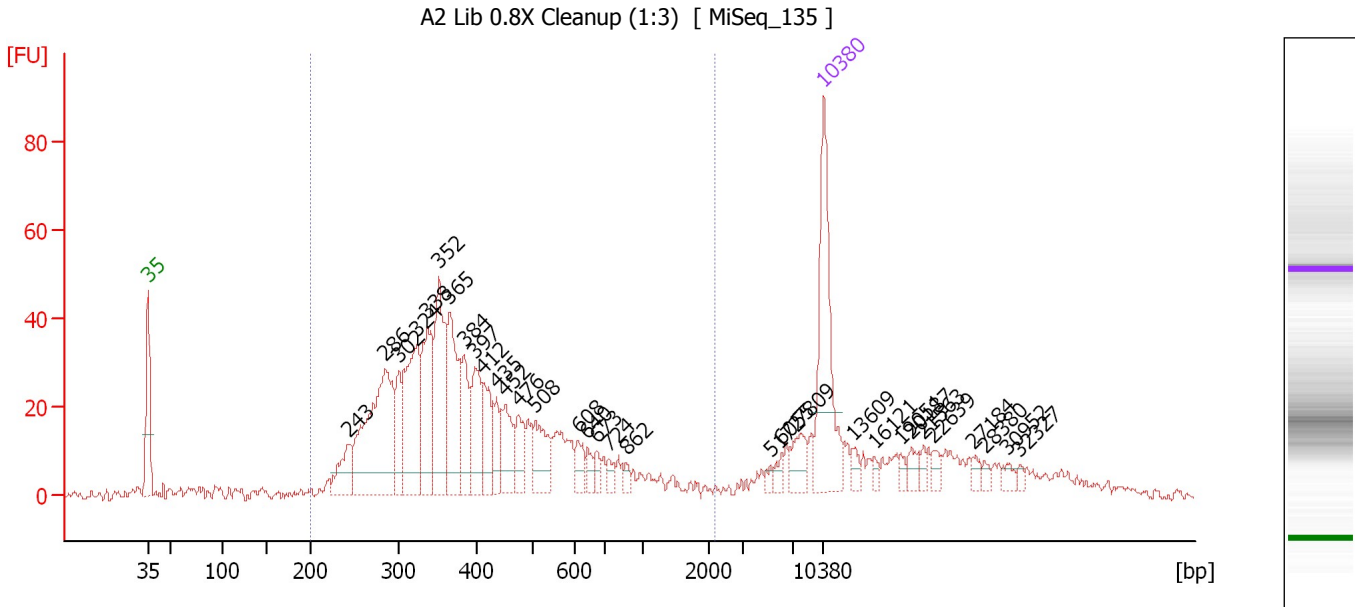
Region table for sample 2 : A1 Lib 0.8X Cleanup (1:9)

From [bp]	Average Size [bp]	To [bp]	Corr. Area	Molarity [pmol/l]	Co % of lor Total	Size distribution in CV [%]	Conc. [pg/μl]
200	612	4,250	782.1	2,715.0	93	71.7	812.44

Assay Class: High Sensitivity DNA Assay
 Data Path: C:\...ents and Settings\Bioanalyzer\2015-07-16\2015-07-16_003.xad

Created: 7/16/2015 1:46:52 PM
 Modified: 7/16/2015 2:34:51 PM

Electropherogram Summary Continued ...



Overall Results for sample 3 : A2 Lib 0.8X Cleanup (1:3)

Number of peaks found: 32 Corr. Area 1: 801.9
 Noise: 1.1

Peak table for sample 3 : A2 Lib 0.8X Cleanup (1:3)

Peak	Size [bp]	Conc. [pg/μl]	Molarity [pmol/l]	Observations	Aligned Migration Time [s]
1	35	125.00	5,411.3	Lower Marker	43.00
2	243	31.61	196.7		63.77
3	286	152.03	806.1		67.59
4	302	31.07	156.0		69.02
5	324	91.79	429.1		70.85
6	338	70.53	316.6		71.95
7	352	80.36	346.3		73.11
8	365	74.54	309.4		74.22
9	384	33.83	133.5		75.76
10	397	40.79	155.6		76.87
11	412	33.19	122.2		77.75
12	435	18.41	64.1		79.08
13	452	35.07	117.6		80.02
14	476	21.22	67.6		81.40
15	508	34.17	102.0		83.11
16	608	11.81	29.4		87.53
17	640	7.95	18.8		88.52
18	673	6.58	14.8		89.52
19	724	6.43	13.4		90.68
20	862	4.98	8.7		92.50
21	5,172	3.08	0.9		107.48
22	6,055	4.59	1.1		108.64
23	7,809	15.34	3.0		110.62
24	10,380	75.00	10.9	Upper Marker	113.00
25	13,609	0.00	0.0		115.98

Assay Class: High Sensitivity DNA Assay
 Data Path: C:\...ents and Settings\Bioanalyzer\2015-07-16\2015-07-16_003.xad

Created: 7/16/2015 1:46:52 PM
 Modified: 7/16/2015 2:34:51 PM

Electropherogram Summary Continued ...

... Peak table for sample 3 : A2 Lib 0.8X Cleanup (1:3)

Peak	Size [bp]	Conc. [pg/μl]	Molarity [pmol/l]	Observations	Aligned Migration Time [s]
26	16,121	0.00	0.0		118.30
27	19,051	0.00	0.0		121.01
28	20,187	0.00	0.0		122.06
29	21,563	0.00	0.0		123.33
30	22,639	0.00	0.0		124.33
31	27,184	0.00	0.0		128.52
32	28,380	0.00	0.0		129.63
33	30,952	0.00	0.0		132.01
34	32,327	0.00	0.0		133.28

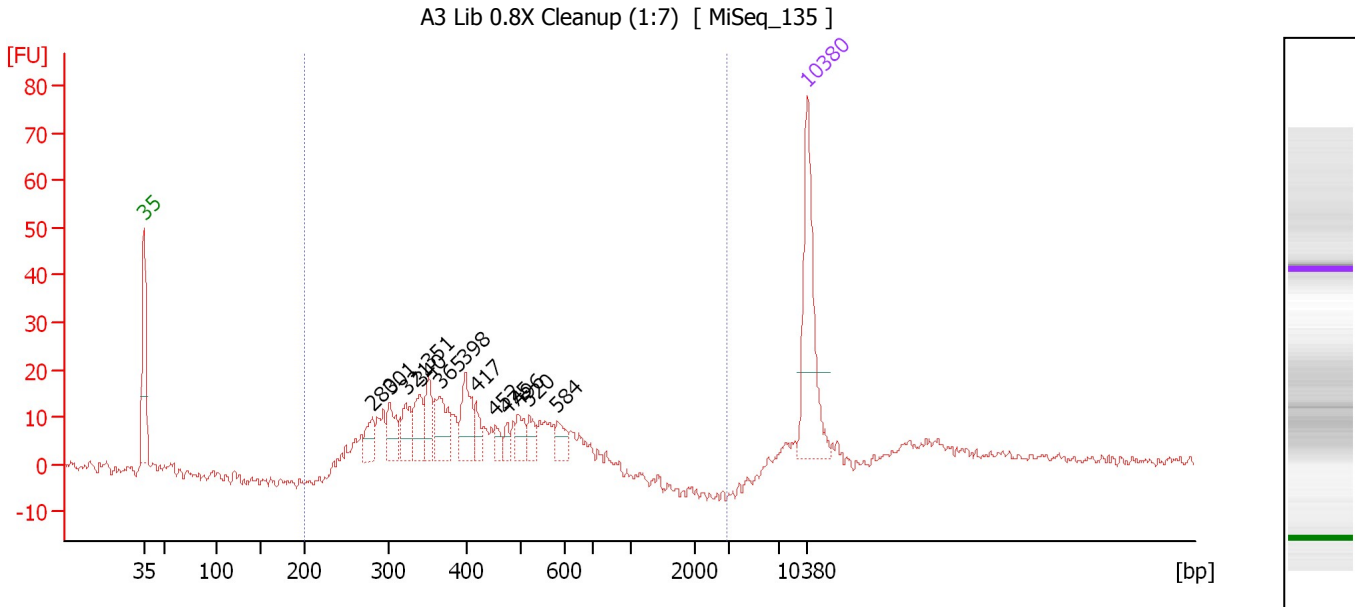
Region table for sample 3 : A2 Lib 0.8X Cleanup (1:3)

From [bp]	Average Size [bp]	To [bp]	Corr. Area	Molarity [pmol/l]	Co % of lor Total	Size distribution in CV [%]	Conc. [pg/μl]
200	427	2,188	801.9	3,594.1	80	47.9	861.45

Assay Class: High Sensitivity DNA Assay
 Data Path: C:\...ents and Settings\Bioanalyzer\2015-07-16\2015-07-16_003.xad

Created: 7/16/2015 1:46:52 PM
 Modified: 7/16/2015 2:34:51 PM

Electropherogram Summary Continued ...



Overall Results for sample 4 : A3 Lib 0.8X Cleanup (1:7)

Number of peaks found: 13 Corr. Area 1: 305.6
 Noise: 1.1

Peak table for sample 4 : A3 Lib 0.8X Cleanup (1:7)

Peak	Size [bp]	Conc. [pg/μl]	Molarity [pmol/l]	Observations	Aligned Migration Time [s]
1	35	125.00	5,411.3	Lower Marker	43.00
2	280	21.13	114.3		67.06
3	301	27.73	139.8		68.92
4	321	27.16	128.2		70.61
5	340	28.01	125.0		72.12
6	351	27.23	117.7		73.02
7	365	39.22	162.8		74.20
8	398	36.62	139.5		76.90
9	417	12.82	46.6		78.03
10	452	9.05	30.3		80.05
11	475	8.31	26.5		81.35
12	496	15.03	45.9		82.53
13	520	12.34	36.0		83.65
14	584	13.86	36.0		86.57
15	10,380	75.00	10.9	Upper Marker	113.00

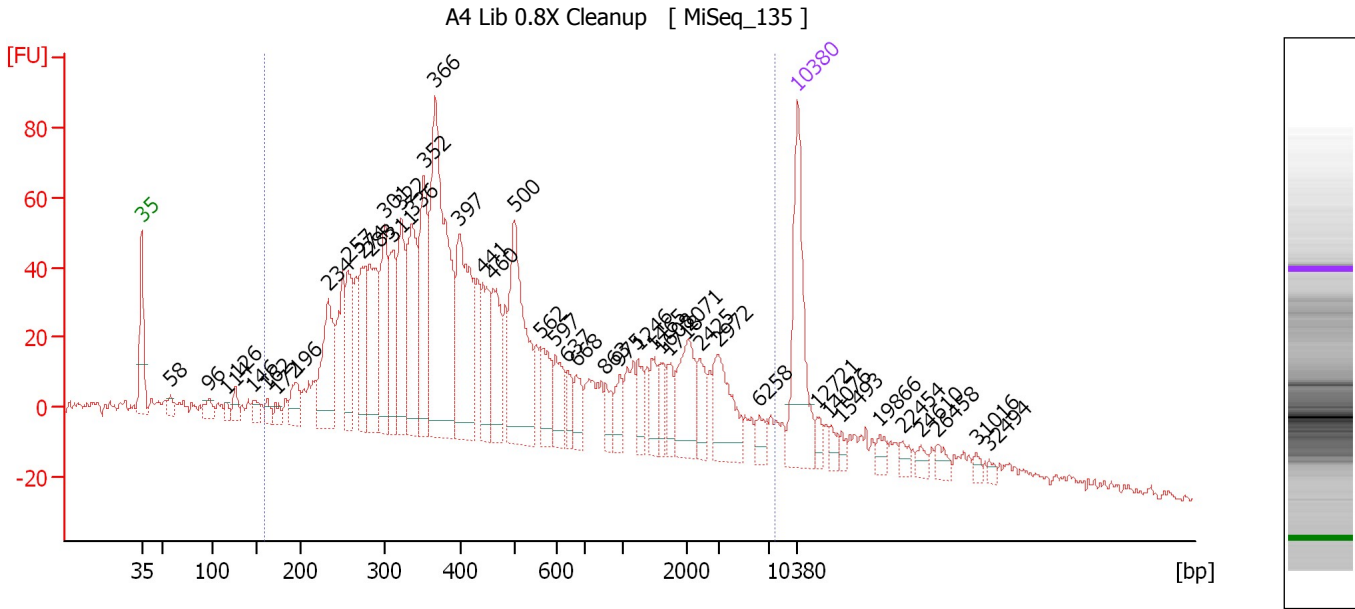
Region table for sample 4 : A3 Lib 0.8X Cleanup (1:7)

From [bp]	Average Size [bp]	To [bp]	Corr. Area	Molarity [pmol/l]	Co % of Ior Total	Size distribution in CV [%]	Conc. [pg/μl]
200	416	2,972	305.6	1,618.4	86	27.2	403.84

Assay Class: High Sensitivity DNA Assay
 Data Path: C:\...ents and Settings\Bioanalyzer\2015-07-16\2015-07-16_003.xad

Created: 7/16/2015 1:46:52 PM
 Modified: 7/16/2015 2:34:51 PM

Electropherogram Summary Continued ...



Overall Results for sample 5 : A4 Lib 0.8X Cleanup

Number of peaks found: 45 Corr. Area 1: 2,102.0
 Noise: 1.5

Peak table for sample 5 : A4 Lib 0.8X Cleanup

Peak	Size [bp]	Conc. [pg/μl]	Molarity [pmol/l]	Observations	Aligned Migration Time [s]
1	35	125.00	5,411.3	Lower Marker	43.00
2	58	10.25	269.2		46.07
3	96	13.80	218.8		50.17
4	114	6.94	91.8		51.99
5	126	13.85	167.2		53.02
6	146	11.54	119.9		54.89
7	162	9.17	85.8		56.37
8	172	9.10	80.2		57.28
9	196	26.18	202.3		59.50
10	234	88.27	571.7		62.92
11	257	57.63	339.3		65.02
12	274	62.47	344.9		66.56
13	283	88.87	475.4		67.36
14	301	76.20	383.5		68.95
15	311	55.77	271.3		69.80
16	322	71.74	337.1		70.72
17	336	91.17	410.7		71.85
18	352	88.75	382.5		73.11
19	366	230.23	952.9		74.30
20	397	119.52	455.9		76.86
21	441	48.18	165.5		79.42
22	460	57.45	189.1		80.50
23	500	123.54	374.1		82.78
24	562	34.20	92.2		85.57
25	597	27.87	70.7		87.16

Assay Class: High Sensitivity DNA Assay
 Data Path: C:\...ents and Settings\Bioanalyzer\2015-07-16\2015-07-16_003.xad

Created: 7/16/2015 1:46:52 PM
 Modified: 7/16/2015 2:34:51 PM

Electropherogram Summary Continued ...

... Peak table for sample 5 : A4 Lib 0.8X Cleanup

Peak	Size [bp]	Conc. [pg/μl]	Molarity [pmol/l]	Observations	Aligned Migration Time [s]
26	637	15.02	35.8		88.41
27	668	19.01	43.1		89.38
28	863	14.11	24.8		92.51
29	975	15.83	24.6		93.99
30	1,246	16.58	20.2		95.98
31	1,465	16.82	17.4		97.46
32	1,608	14.21	13.4		98.43
33	1,718	13.46	11.9		99.17
34	2,071	44.08	32.3		101.33
35	2,425	18.08	11.3		102.59
36	2,972	43.45	22.2		104.52
37	6,258	10.00	2.4		108.90
38	10,380	75.00	10.9	Upper Marker	113.00
39	12,721	0.00	0.0		115.16
40	14,076	0.00	0.0		116.41
41	15,493	0.00	0.0		117.72
42	19,866	0.00	0.0		121.76
43	22,454	0.00	0.0		124.15
44	24,610	0.00	0.0		126.15
45	26,458	0.00	0.0		127.85
46	31,016	0.00	0.0		132.07
47	32,494	0.00	0.0		133.43

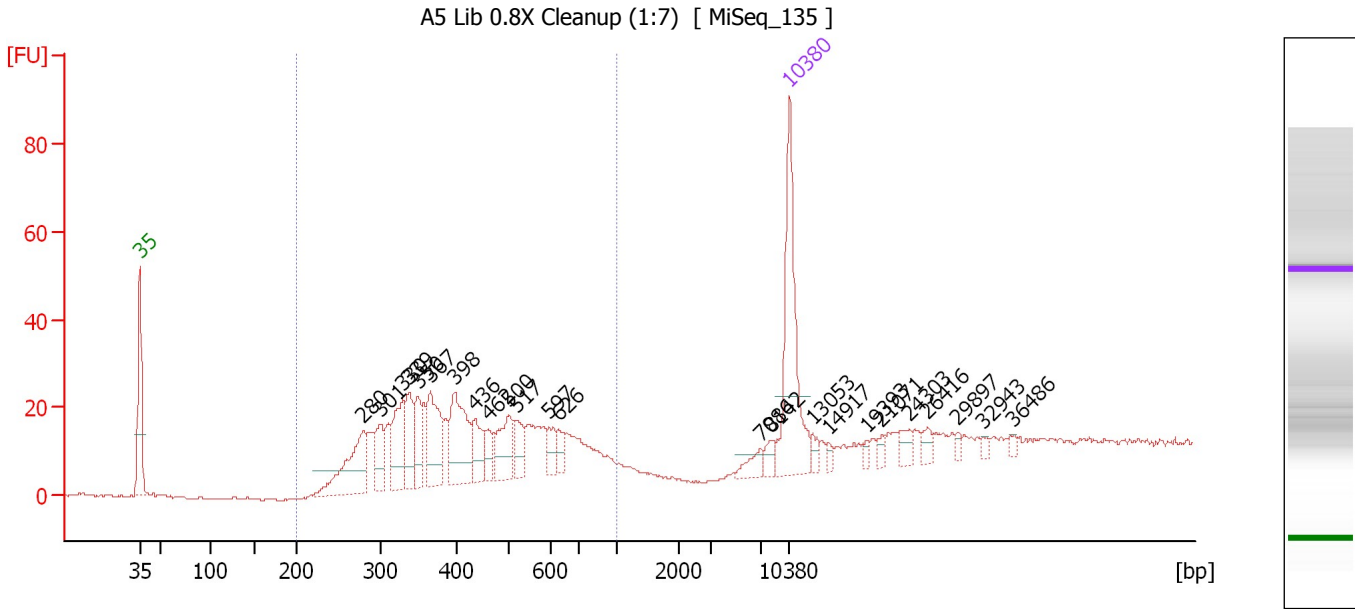
Region table for sample 5 : A4 Lib 0.8X Cleanup

From [bp]	Average Size [bp]	To [bp]	Corr. Area	Molarity [pmol/l]	Co % of lor Total	Size distribution in CV [%]	Conc. [pg/μl]
159	868	7,689	2,102.0	7,261.8	90	100.0	1,847.05

Assay Class: High Sensitivity DNA Assay
 Data Path: C:\...ents and Settings\Bioanalyzer\2015-07-16\2015-07-16_003.xad

Created: 7/16/2015 1:46:52 PM
 Modified: 7/16/2015 2:34:51 PM

Electropherogram Summary Continued ...



Overall Results for sample 6 : A5 Lib 0.8X Cleanup (1:7)

Number of peaks found: 24 Corr. Area 1: 408.4
 Noise: 0.3

Peak table for sample 6 : A5 Lib 0.8X Cleanup (1:7)

Peak	Size [bp]	Conc. [pg/μl]	Molarity [pmol/l]	Observations	Aligned Migration Time [s]
1	35	125.00	5,411.3	Lower Marker	43.00
2	280	64.74	350.4		67.06
3	301	28.20	141.9		68.96
4	330	41.72	191.3		71.37
5	339	31.59	141.3		72.06
6	350	24.40	105.6		72.98
7	367	48.27	199.4		74.35
8	398	57.08	217.2		76.94
9	436	22.56	78.4		79.12
10	462	11.94	39.1		80.61
11	500	32.20	97.7		82.74
12	517	18.43	54.0		83.54
13	597	11.03	28.0		87.16
14	626	7.81	18.9		88.08
15	7,086	9.29	2.0		109.96
16	8,142	6.54	1.2		110.93
17	10,380	75.00	10.9	Upper Marker	113.00
18	13,053	0.00	0.0		115.47
19	14,917	0.00	0.0		117.19
20	19,393	0.00	0.0		121.33
21	21,071	0.00	0.0		122.88
22	24,303	0.00	0.0		125.86
23	26,416	0.00	0.0		127.82
24	29,897	0.00	0.0		131.03
25	32,943	0.00	0.0		133.84


Assay Class: High Sensitivity DNA Assay
Data Path: C:\...ents and Settings\Bioanalyzer\2015-07-16\2015-07-16_003.xad

Created: 7/16/2015 1:46:52 PM
Modified: 7/16/2015 2:34:51 PM

Electropherogram Summary Continued ...**... Peak table for sample 6 : A5 Lib 0.8X Cleanup (1:7)**

Peak	Size [bp]	Conc. [pg/ μ l]	Molarity [pmol/l]	Observations	Aligned Migration Time [s]
26	36,486	0.00	0.0		137.12

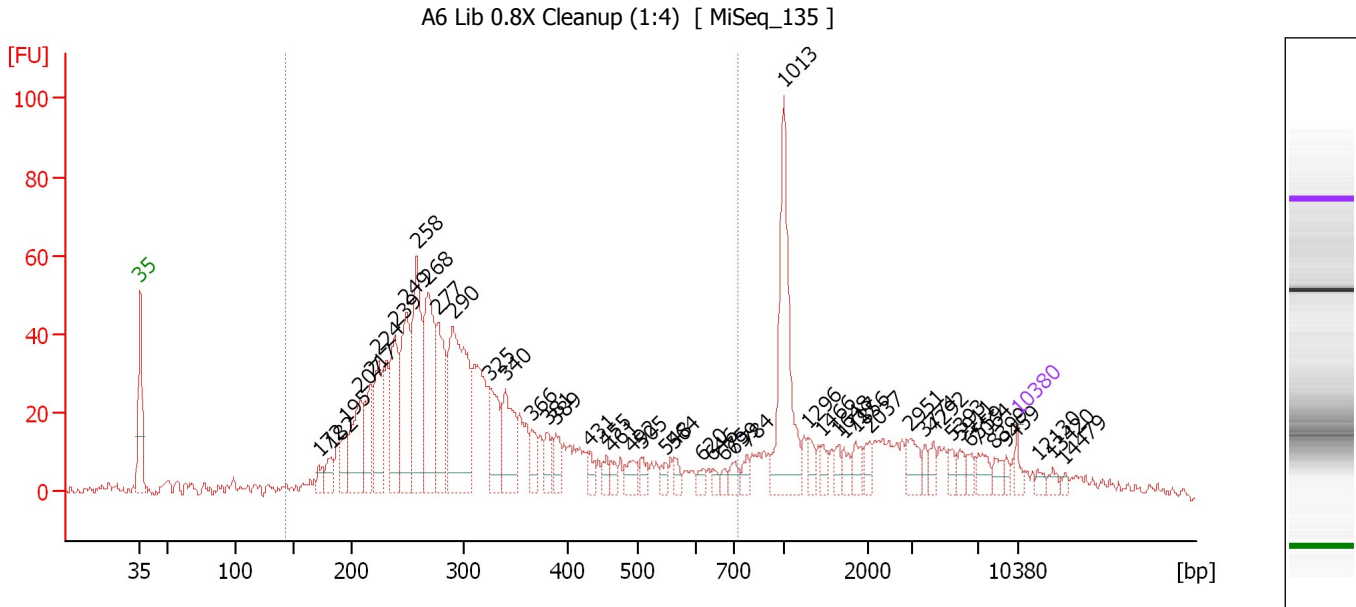
Region table for sample 6 : A5 Lib 0.8X Cleanup (1:7)

From [bp]	Average Size [bp]	To [bp]	Corr. Area	Molarity [pmol/l]	Co % of lor Total	Size distribution in CV [%]	Conc. [pg/ μ l]
200	438	1,000	408.4	1,766.8	 85	31.5	453.59

Assay Class: High Sensitivity DNA Assay
 Data Path: C:\...ents and Settings\Bioanalyzer\2015-07-16\2015-07-16_003.xad

Created: 7/16/2015 1:46:52 PM
 Modified: 7/16/2015 2:34:51 PM

Electropherogram Summary Continued ...



Overall Results for sample 7 : A6 Lib 0.8X Cleanup (1:4)

Number of peaks found: 48 Corr. Area 1: 1,109.7
 Noise: 1.3

Peak table for sample 7 : A6 Lib 0.8X Cleanup (1:4)

Peak	Size [bp]	Conc. [pg/μl]	Molarity [pmol/l]	Observations	Aligned Migration Time [s]
1	35	125.00	5,411.3	Lower Marker	43.00
2	172	145.15	1,282.1		57.26
3	182	185.87	1,545.5		58.23
4	195	312.78	2,433.2		59.38
5	207	736.82	5,394.2		60.49
6	217	492.21	3,431.1		61.43
7	224	692.67	4,685.8		62.02
8	239	841.38	5,331.7		63.38
9	249	1,068.08	6,510.9		64.23
10	258	1,256.18	7,377.0		65.09
11	268	1,250.38	7,058.4		66.02
12	277	820.24	4,488.0		66.79
13	290	1,797.59	9,387.1		67.98
14	325	522.51	2,436.6		70.91
15	340	639.21	2,849.2		72.15
16	366	201.39	834.2		74.28
17	381	194.60	774.3		75.51
18	389	202.47	788.4		76.19
19	431	93.27	327.6		78.87
20	455	94.07	312.9		80.23
21	461	77.27	253.7		80.57
22	492	163.78	504.2		82.32
23	505	89.91	269.6		83.00
24	548	79.76	220.7		84.91
25	564	79.75	214.4		85.64

Assay Class: High Sensitivity DNA Assay
 Data Path: C:\...ents and Settings\Bioanalyzer\2015-07-16\2015-07-16_003.xad

Created: 7/16/2015 1:46:52 PM
 Modified: 7/16/2015 2:34:51 PM

Electropherogram Summary Continued ...

... Peak table for sample 7 : A6 Lib 0.8X Cleanup (1:4)

Peak	Size [bp]	Conc. [pg/μl]	Molarity [pmol/l]	Observations	Aligned Migration Time [s]
26	620	60.16	147.1		87.89
27	646	54.75	128.4		88.70
28	675	55.44	124.4		89.60
29	699	100.10	217.1		90.32
30	784	83.02	160.4		91.47
31	1,013	1,159.51	1,734.2		94.40
32	1,296	110.98	129.7		96.32
33	1,466	74.23	76.7		97.47
34	1,648	69.68	64.1		98.70
35	1,717	86.37	76.2		99.17
36	1,856	112.94	92.2		100.11
37	2,037	95.37	70.9		101.21
38	2,951	163.31	83.9		104.45
39	3,774	63.19	25.4		105.64
40	4,292	74.55	26.3		106.32
41	5,393	77.83	21.9		107.77
42	5,911	73.70	18.9		108.45
43	6,559	65.94	15.2		109.30
44	7,064	117.69	25.2		109.94
45	8,399	75.41	13.6		111.17
46	9,459	44.08	7.1		112.15
47	10,380	75.00	10.9	Upper Marker	113.00
48	12,130	0.00	0.0		114.62
49	13,420	0.00	0.0		115.81
50	14,479	0.00	0.0		116.79

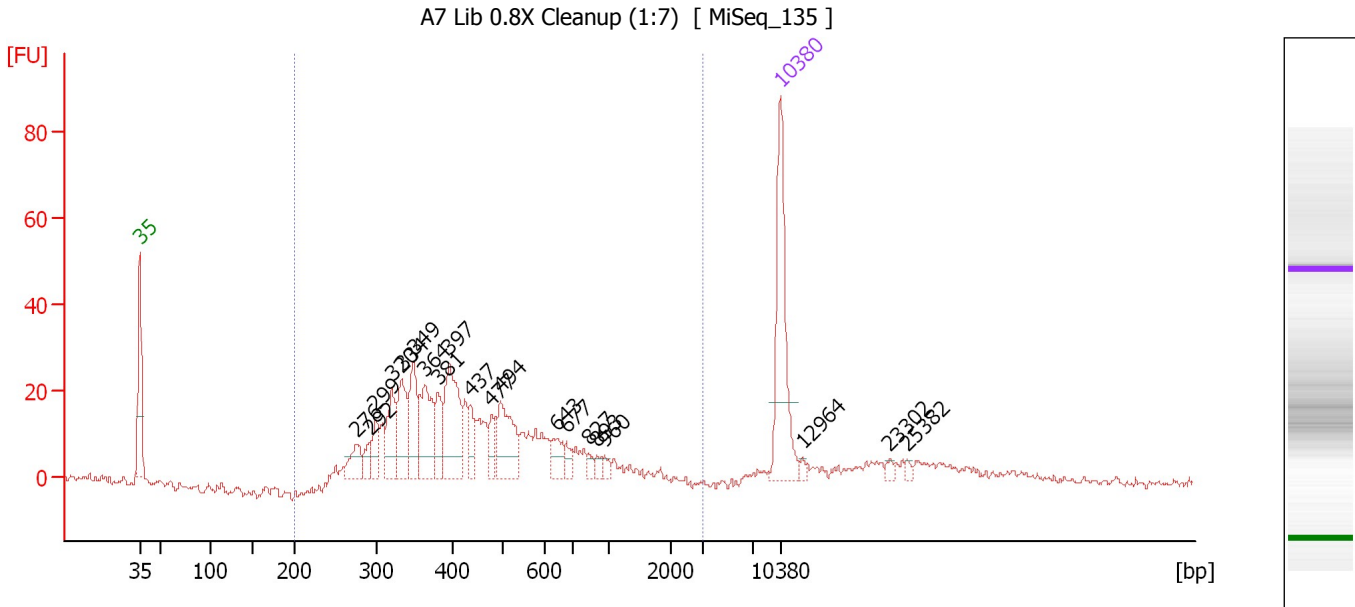
Region table for sample 7 : A6 Lib 0.8X Cleanup (1:4)

From [bp]	Average Size [bp]	To [bp]	Corr. Area	Molarity [pmol/l]	Co % of Ior Total	Size distribution in CV [%]	Conc. [pg/μl]
143	317	730	1,109.7	85,912.0	72	34.0	15,821.97

Assay Class: High Sensitivity DNA Assay
 Data Path: C:\...ents and Settings\Bioanalyzer\2015-07-16\2015-07-16_003.xad

Created: 7/16/2015 1:46:52 PM
 Modified: 7/16/2015 2:34:51 PM

Electropherogram Summary Continued ...



Overall Results for sample 8 : A7 Lib 0.8X Cleanup (1:7)

Number of peaks found: 20 Corr. Area 1: 498.0
 Noise: 0.8

Peak table for sample 8 : A7 Lib 0.8X Cleanup (1:7)


Peak	Size [bp]	Conc. [pg/μl]	Molarity [pmol/l]	Observations	Aligned Migration Time [s]
1	35	125.00	5,411.3	Lower Marker	43.00
2	276	22.40	123.0		66.70
3	292	12.20	63.3		68.16
4	299	19.56	99.2		68.74
5	320	37.02	175.1		70.55
6	334	45.93	208.4		71.65
7	349	44.55	193.1		72.93
8	364	52.07	216.5		74.16
9	381	27.08	107.6		75.55
10	397	69.70	266.1		76.84
11	437	17.32	60.1		79.16
12	477	15.13	48.1		81.44
13	494	50.48	154.8		82.43
14	643	15.85	37.4		88.60
15	677	7.46	16.7		89.65
16	827	4.70	8.6		92.03
17	893	4.36	7.4		92.91
18	960	4.89	7.7		93.78
19	10,380	75.00	10.9	Upper Marker	113.00
20	12,964	0.00	0.0		115.39
21	23,302	0.00	0.0		124.94
22	25,382	0.00	0.0		126.86

Assay Class: High Sensitivity DNA Assay
Data Path: C:\...ents and Settings\Bioanalyzer\2015-07-16\2015-07-16_003.xad

Created: 7/16/2015 1:46:52 PM
Modified: 7/16/2015 2:34:51 PM

Electropherogram Summary Continued ...

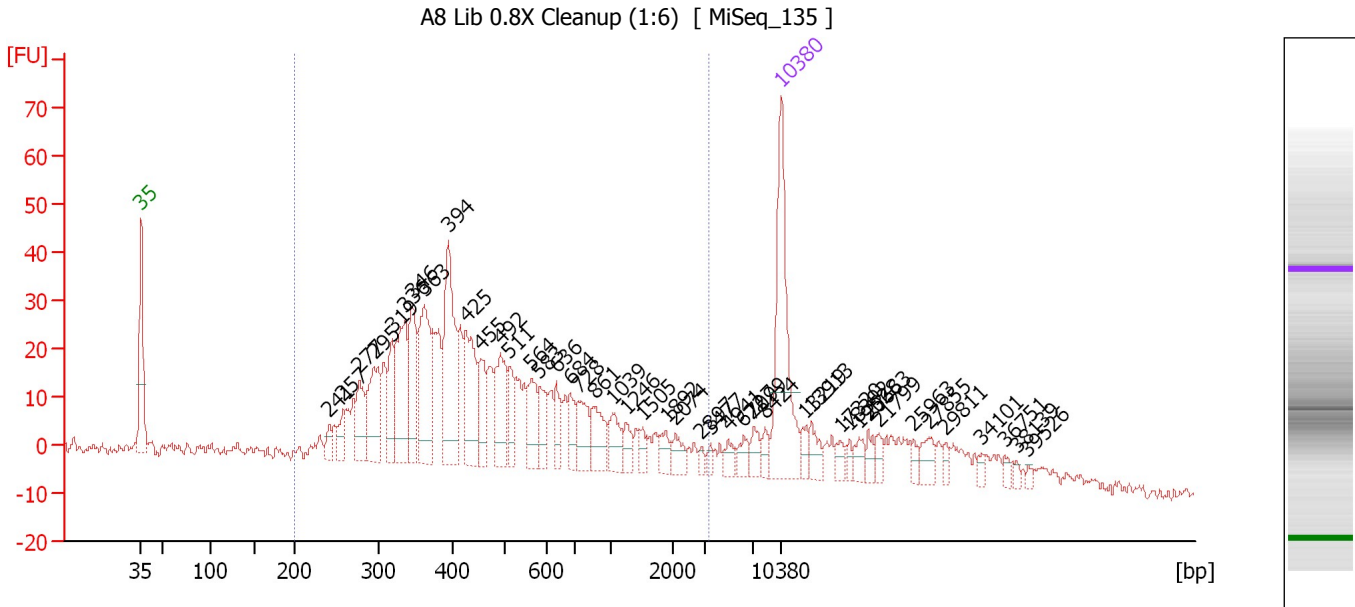
... Region table for sample 8 : A7 Lib 0.8X Cleanup (1:7)

From [bp]	Average Size [bp]	To [bp]	Corr. Area	Molarity [pmol/l]	Co % of lor Total	Size distribution in CV [%]	Conc. [pg/ μ l]
200	491	2,962	498.0	2,268.7	 85	51.9	611.04

Assay Class: High Sensitivity DNA Assay
 Data Path: C:\...ents and Settings\Bioanalyzer\2015-07-16\2015-07-16_003.xad

Created: 7/16/2015 1:46:52 PM
 Modified: 7/16/2015 2:34:51 PM

Electropherogram Summary Continued ...



Overall Results for sample 9 : A8 Lib 0.8X Cleanup (1:6)

Number of peaks found: 44 Corr. Area 1: 740.1
 Noise: 1.5

Peak table for sample 9 : A8 Lib 0.8X Cleanup (1:6)

Peak	Size [bp]	Conc. [pg/μl]	Molarity [pmol/l]	Observations	Aligned Migration Time [s]
1	35	125.00	5,411.3	Lower Marker	43.00
2	241	9.98	62.7		63.57
3	257	16.13	94.9		65.03
4	277	31.17	170.2		66.84
5	295	50.52	259.5		68.41
6	319	32.22	153.3		70.39
7	336	60.09	271.3		71.79
8	346	50.26	220.4		72.61
9	363	70.33	293.9		74.01
10	394	84.56	325.4		76.57
11	425	55.41	197.6		78.50
12	455	27.28	90.9		80.19
13	492	41.76	128.7		82.28
14	511	20.96	62.1		83.27
15	564	24.63	66.1		85.66
16	583	20.07	52.1		86.54
17	636	13.74	32.7		88.40
18	684	14.92	33.1		89.86
19	728	22.58	47.0		90.74
20	861	22.03	38.8		92.48
21	1,039	15.46	22.5		94.58
22	1,246	9.31	11.3		95.98
23	1,505	6.15	6.2		97.73
24	1,892	8.46	6.8		100.35
25	2,074	8.93	6.5		101.34

Assay Class: High Sensitivity DNA Assay
 Data Path: C:\...ents and Settings\Bioanalyzer\2015-07-16\2015-07-16_003.xad

Created: 7/16/2015 1:46:52 PM
 Modified: 7/16/2015 2:34:51 PM

Electropherogram Summary Continued ...

... Peak table for sample 9 : A8 Lib 0.8X Cleanup (1:6)

Peak	Size [bp]	Conc. [pg/μl]	Molarity [pmol/l]	Observations	Aligned Migration Time [s]
26	2,897	3.04	1.6		104.26
27	3,477	3.45	1.5		105.25
28	4,941	6.17	1.9		107.17
29	6,227	7.67	1.9		108.86
30	7,099	8.38	1.8		109.97
31	8,424	6.34	1.1		111.19
32	10,380	75.00	10.9	Upper Marker	113.00
33	13,219	0.00	0.0		115.62
34	13,913	0.00	0.0		116.26
35	17,320	0.00	0.0		119.41
36	18,392	0.00	0.0		120.40
37	19,528	0.00	0.0		121.45
38	20,663	0.00	0.0		122.50
39	21,799	0.00	0.0		123.55
40	25,963	0.00	0.0		127.40
41	27,855	0.00	0.0		129.14
42	29,811	0.00	0.0		130.95
43	34,101	0.00	0.0		134.92
44	36,751	0.00	0.0		137.36
45	38,139	0.00	0.0		138.65
46	39,526	0.00	0.0		139.93

Region table for sample 9 : A8 Lib 0.8X Cleanup (1:6)

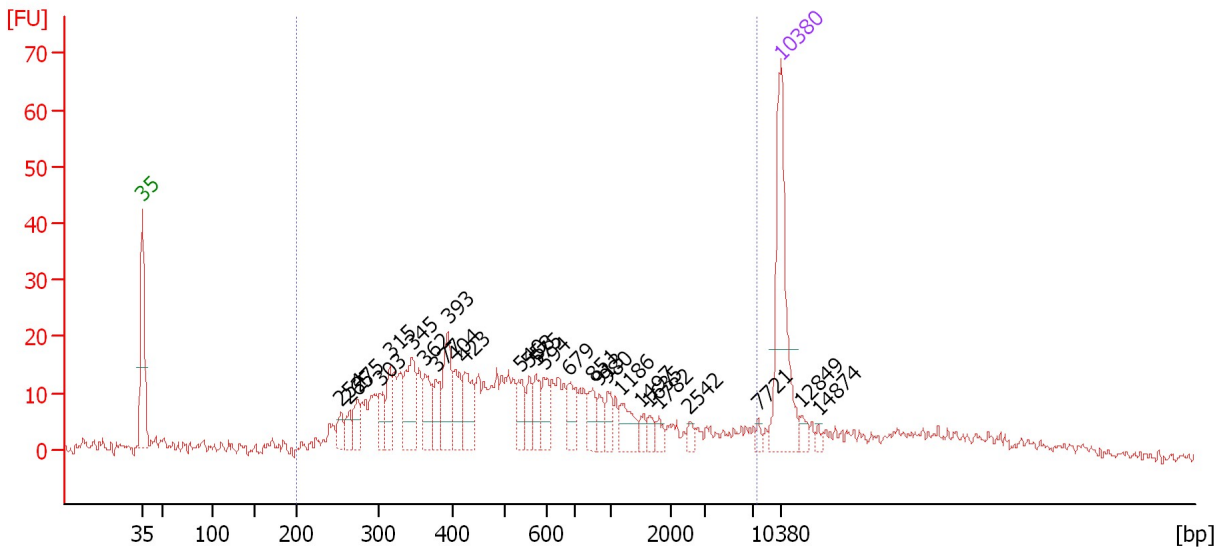
From [bp]	Average Size [bp]	To [bp]	Corr. Area	Molarity [pmol/l]	Co % of lor Total	Size distribution in CV [%]	Conc. [pg/μl]
200	579	3,316	740.1	3,080.5	82	76.5	844.51

Assay Class: High Sensitivity DNA Assay
 Data Path: C:\...ents and Settings\Bioanalyzer\2015-07-16\2015-07-16_003.xad

Created: 7/16/2015 1:46:52 PM
 Modified: 7/16/2015 2:34:51 PM

Electropherogram Summary Continued ...

A9 Lib 0.8X Cleanup (1:12) [MiSeq_135]



Overall Results for sample 10 : A9 Lib 0.8X Cleanup (1:12)

Number of peaks found: 27 Corr. Area 1: 522.0
 Noise: 1.1

Peak table for sample 10 : A9 Lib 0.8X Cleanup (1:12)

Peak	Size [bp]	Conc. [pg/μl]	Molarity [pmol/l]	Observations	Aligned Migration Time [s]
1	35	125.00	5,411.3	Lower Marker	43.00
2	254	11.55	68.8		64.75
3	265	11.02	63.1		65.69
4	275	16.60	91.4		66.63
5	303	15.65	78.4		69.08
6	315	21.42	102.9		70.13
7	345	39.92	175.2		72.59
8	362	24.52	102.5		73.99
9	377	21.20	85.2		75.22
10	393	36.88	142.2		76.51
11	404	23.02	86.3		77.33
12	423	31.36	112.4		78.38
13	540	18.73	52.5		84.58
14	558	13.35	36.2		85.40
15	575	16.70	44.0		86.16
16	594	17.05	43.5		87.04
17	679	17.78	39.7		89.73
18	851	13.10	23.3		92.36
19	913	9.50	15.8		93.18
20	980	10.74	16.6		94.05
21	1,186	16.83	21.5		95.57
22	1,497	5.53	5.6		97.68
23	1,635	5.65	5.2		98.61
24	1,782	5.35	4.5		99.61
25	2,542	4.61	2.7		103.00

Assay Class: High Sensitivity DNA Assay
 Data Path: C:\...ents and Settings\Bioanalyzer\2015-07-16\2015-07-16_003.xad

Created: 7/16/2015 1:46:52 PM
 Modified: 7/16/2015 2:34:51 PM

Electropherogram Summary Continued ...

... Peak table for sample 10 : A9 Lib 0.8X Cleanup (1:12)

Peak	Size [bp]	Conc. [pg/ μ l]	Molarity [pmol/l]	Observations	Aligned Migration Time [s]
26	7,721	3.15	0.6		110.54
27	10,380	75.00	10.9	Upper Marker	113.00
28	12,849	0.00	0.0		115.28
29	14,874	0.00	0.0		117.15

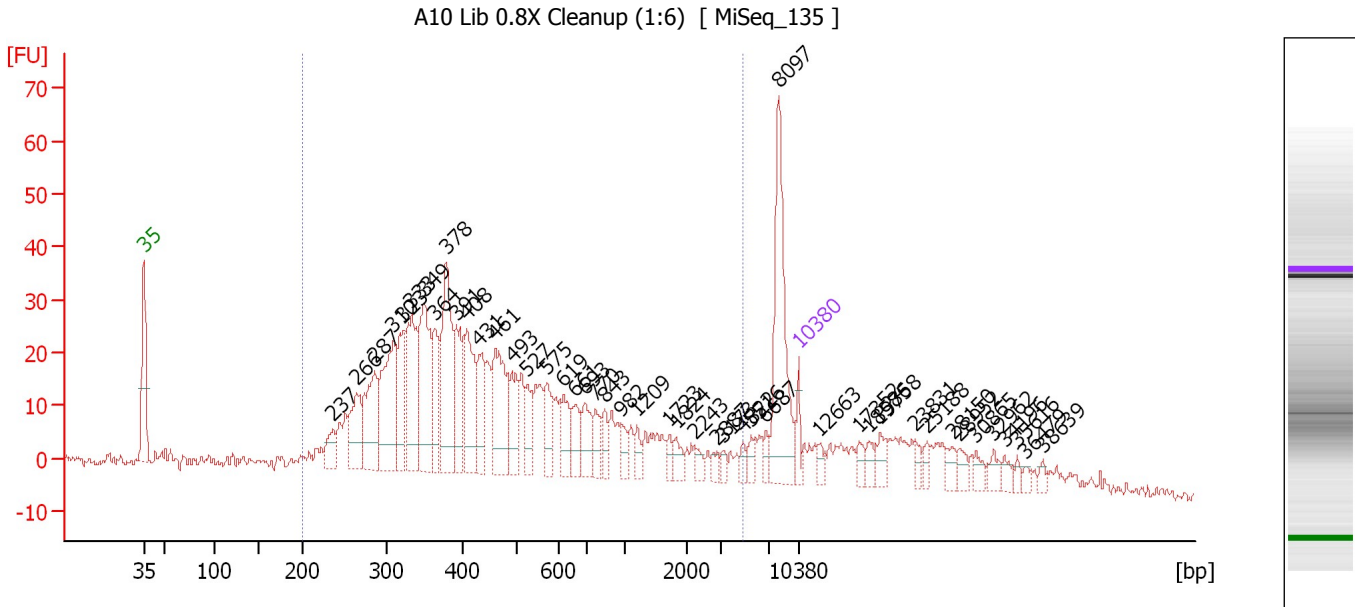
Region table for sample 10 : A9 Lib 0.8X Cleanup (1:12)

From [bp]	Average Size [bp]	To [bp]	Corr. Area	Molarity [pmol/l]	Co % of lor Total	Size distribution in CV [%]	Conc. [pg/ μ l]
200	885	7,694	522.0	2,423.0	82	100.0	710.65

Assay Class: High Sensitivity DNA Assay
 Data Path: C:\...ents and Settings\Bioanalyzer\2015-07-16\2015-07-16_003.xad

Created: 7/16/2015 1:46:52 PM
 Modified: 7/16/2015 2:34:51 PM

Electropherogram Summary Continued ...



Overall Results for sample 11 : A10 Lib 0.8X Cleanup (1:6)

Number of peaks found: 46 Corr. Area 1: 854.0
 Noise: 1.1

Peak table for sample 11 : A10 Lib 0.8X Cleanup (1:6)

Peak	Size [bp]	Conc. [pg/μl]	Molarity [pmol/l]	Observations	Aligned Migration Time [s]
1	35	125.00	5,411.3	Lower Marker	43.00
2	237	171.75	1,095.8		63.24
3	266	393.85	2,243.8		65.80
4	287	569.91	3,010.2		67.68
5	310	777.74	3,802.9		69.68
6	323	433.34	2,032.5		70.76
7	333	657.69	2,988.6		71.62
8	349	770.65	3,342.1		72.93
9	364	329.90	1,373.5		74.12
10	378	793.80	3,177.7		75.32
11	391	412.23	1,597.5		76.35
12	408	517.80	1,922.8		77.54
13	431	304.05	1,068.5		78.86
14	461	576.33	1,893.1		80.57
15	493	262.58	806.3		82.39
16	527	169.85	488.3		83.99
17	575	217.27	572.7		86.15
18	619	201.89	494.5		87.86
19	661	169.92	389.3		89.17
20	693	194.27	424.8		90.14
21	770	133.60	262.9		91.28
22	843	102.83	184.7		92.25
23	982	77.16	119.1		94.07
24	1,209	68.90	86.4		95.73
25	1,723	53.71	47.2		99.21

Assay Class: High Sensitivity DNA Assay
 Data Path: C:\...ents and Settings\Bioanalyzer\2015-07-16\2015-07-16_003.xad

Created: 7/16/2015 1:46:52 PM
 Modified: 7/16/2015 2:34:51 PM

Electropherogram Summary Continued ...

... Peak table for sample 11 : A10 Lib 0.8X Cleanup (1:6)

Peak	Size [bp]	Conc. [pg/μl]	Molarity [pmol/l]	Observations	Aligned Migration Time [s]
26	1,824	69.85	58.0		99.89
27	2,243	52.30	35.3		101.94
28	2,887	40.92	21.5		104.22
29	3,173	37.44	17.9		104.85
30	4,822	41.95	13.2		107.01
31	5,516	61.92	17.0		107.93
32	6,687	61.35	13.9		109.47
33	8,097	748.93	140.1		110.89
34	10,380	75.00	10.9	Upper Marker	113.00
35	12,663	0.00	0.0		115.11
36	17,352	0.00	0.0		119.44
37	18,586	0.00	0.0		120.58
38	19,758	0.00	0.0		121.66
39	23,831	0.00	0.0		125.43
40	25,188	0.00	0.0		126.68
41	28,150	0.00	0.0		129.42
42	28,952	0.00	0.0		130.16
43	30,865	0.00	0.0		131.93
44	32,962	0.00	0.0		133.86
45	34,196	0.00	0.0		135.00
46	35,616	0.00	0.0		136.31
47	36,479	0.00	0.0		137.11
48	38,639	0.00	0.0		139.11

Region table for sample 11 : A10 Lib 0.8X Cleanup (1:6)

From [bp]	Average Size [bp]	To [bp]	Corr. Area	Molarity [pmol/l]	Co % of lor Total	Size distribution in CV [%]	Conc. [pg/μl]
200	657	4,894	854.0	39,702.6	73	100.0	10,633.42

Assay Class: High Sensitivity DNA Assay
Data Path: C:\...ents and Settings\Bioanalyzer\2015-07-16\2015-07-16_003.xad

Created: 7/16/2015 1:46:52 PM
Modified: 7/16/2015 2:34:51 PM

Gel Image

