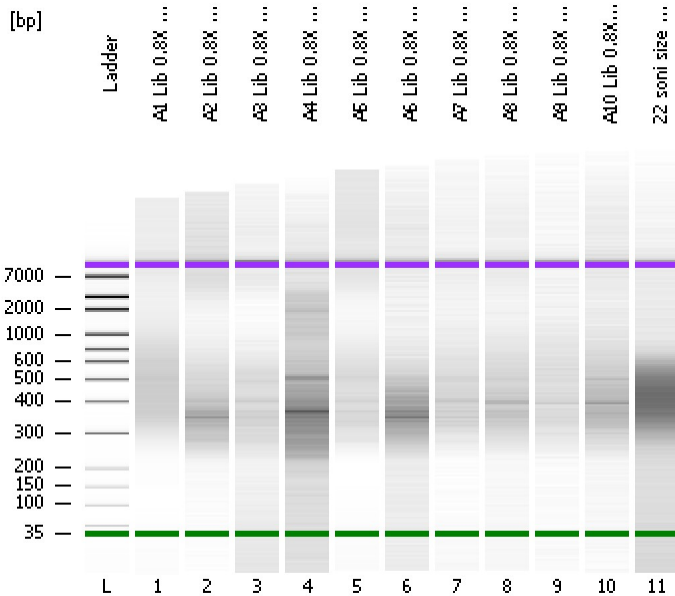


Assay Class: High Sensitivity DNA Assay
Data Path: C:\...ents and Settings\Bioanalyzer\2015-07-16\2015-07-16_004.xad

Created: 7/16/2015 4:11:53 PM
Modified: 7/16/2015 4:53:11 PM

Electrophoresis File Run Summary



Instrument Information:

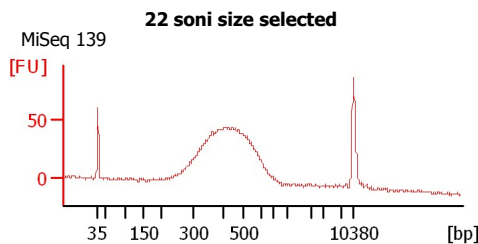
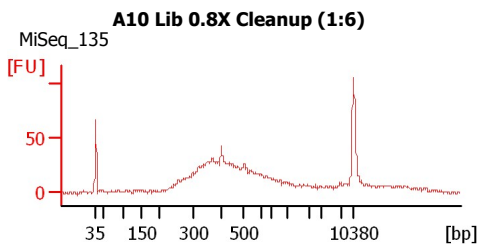
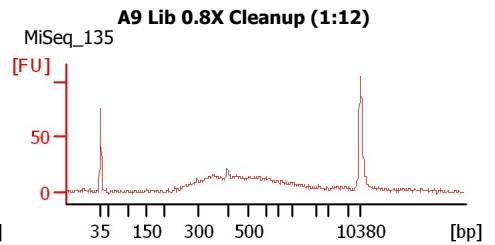
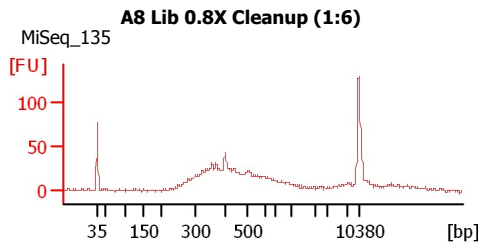
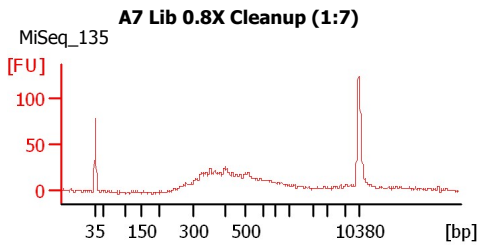
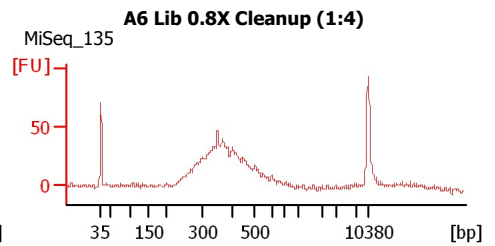
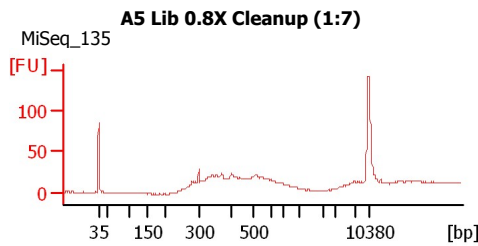
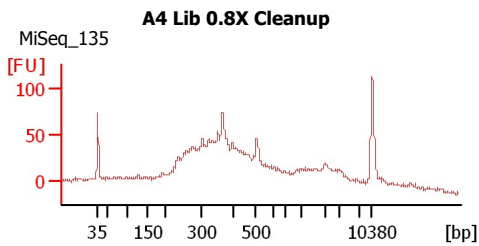
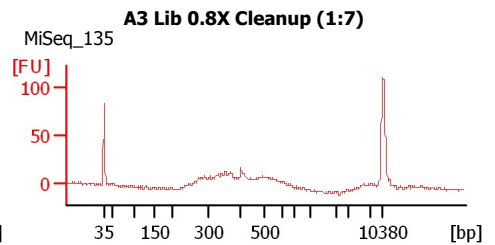
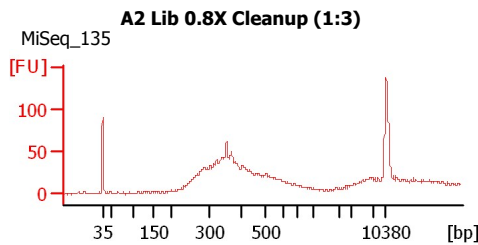
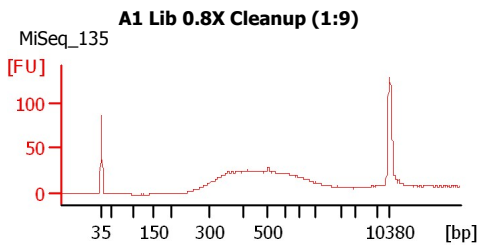
Instrument Name: DE13701086 Firmware: C.01.069
Serial#: DE13701086 Type: G2938B

Assay Information:

Assay Origin Path: C:\Program Files\Agilent\2100 bioanalyzer\2100 expert\assays\dsDNA\High Sensitivity DNA.xsy
Assay Class: High Sensitivity DNA Assay
Version: 1.03
Assay Comments: Copyright © 2003-2010 Agilent Technologies

Chip Information:

Chip Lot #:
Reagent Kit Lot #:
Chip Comments:



Assay Class: High Sensitivity DNA Assay
Data Path: C:\...ents and Settings\Bioanalyzer\2015-07-16\2015-07-16_004.xad

Created: 7/16/2015 4:11:53 PM
Modified: 7/16/2015 4:53:11 PM

Electrophoresis File Run Summary (Chip Summary)

Sample Name	Sample Comment	Rest. Digest	Status	Observation	Result Label	Result Color
A1 Lib 0.8X Cleanup (1:9)	MiSeq_135	<input type="checkbox"/>	✓			
A2 Lib 0.8X Cleanup (1:3)	MiSeq_135	<input type="checkbox"/>	✓			
A3 Lib 0.8X Cleanup (1:7)	MiSeq_135	<input type="checkbox"/>	✓			
A4 Lib 0.8X Cleanup	MiSeq_135	<input type="checkbox"/>	✓			
A5 Lib 0.8X Cleanup (1:7)	MiSeq_135	<input type="checkbox"/>	✓			
A6 Lib 0.8X Cleanup (1:4)	MiSeq_135	<input type="checkbox"/>	✓			
A7 Lib 0.8X Cleanup (1:7)	MiSeq_135	<input type="checkbox"/>	✓			
A8 Lib 0.8X Cleanup (1:6)	MiSeq_135	<input type="checkbox"/>	✓			
A9 Lib 0.8X Cleanup (1:12)	MiSeq_135	<input type="checkbox"/>	✓			
A10 Lib 0.8X Cleanup (1:6)	MiSeq_135	<input type="checkbox"/>	✓			
22 soni size selected	MiSeq 139	<input type="checkbox"/>	✓			
Ladder		<input type="checkbox"/>	✓			

Chip Lot #

Reagent Kit Lot #

Chip Comments :

Assay Class: High Sensitivity DNA Assay
Data Path: C:\...ents and Settings\Bioanalyzer\2015-07-16\2015-07-16_004.xad

Created: 7/16/2015 4:11:53 PM
Modified: 7/16/2015 4:53:11 PM

Electrophoresis Assay Details

General Analysis Settings

Number of Available Sample and Ladder Wells (Max.) : 12
Minimum Visible Range [s] : 32
Maximum Visible Range [s] : 138
Start Analysis Time Range [s] : 33
End Analysis Time Range [s] : 137.5
Ladder Concentration [pg/μl] : 1950
Uses Standard Area for Ladder Fragments
Lower Marker Concentration [pg/μl] : 125
Upper Marker Concentration [pg/μl] : 75
Used Upper Marker for Quantitation
Standard Curve Fit is Point to Point
Show Data Aligned to Lower and Upper Marker

Integrator Settings

Integration Start Time [s] : 33.05
Integration End Time [s] : 137
Slope Threshold : 0.8
Height Threshold [FU] : 5
Area Threshold : 0.1
Width Threshold [s] : 0.6
Baseline Plateau [s] : 0.5

Filter Settings

Filter Width [s] : 0.5
Polynomial Order : 4

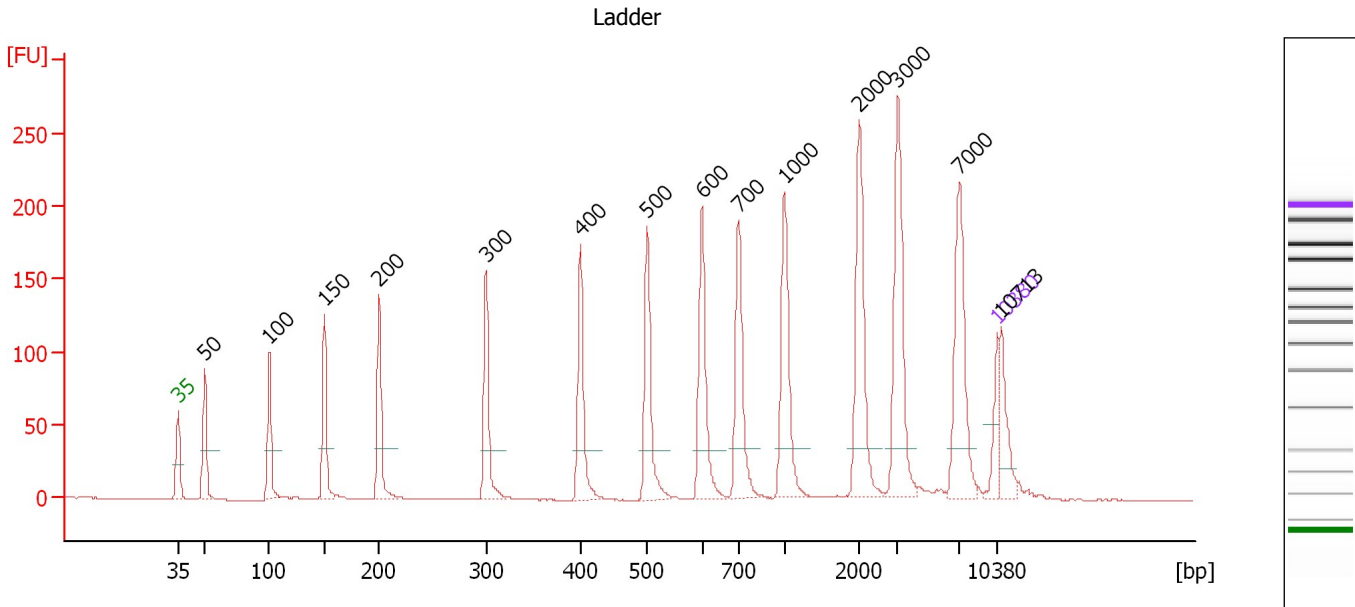
Ladder

Ladder Peak	Size	Area
1	35	160
2	50	210
3	100	208
4	150	221
5	200	242
6	300	270
7	400	305
8	500	306
9	600	336
10	700	321
11	1000	366
12	2000	413
13	3000	411
14	7000	400
15	10380	214

Assay Class: High Sensitivity DNA Assay
 Data Path: C:\...ents and Settings\Bioanalyzer\2015-07-16\2015-07-16_004.xad

Created: 7/16/2015 4:11:53 PM
 Modified: 7/16/2015 4:53:11 PM

Electropherogram Summary



Overall Results for Ladder

Noise: 0.2

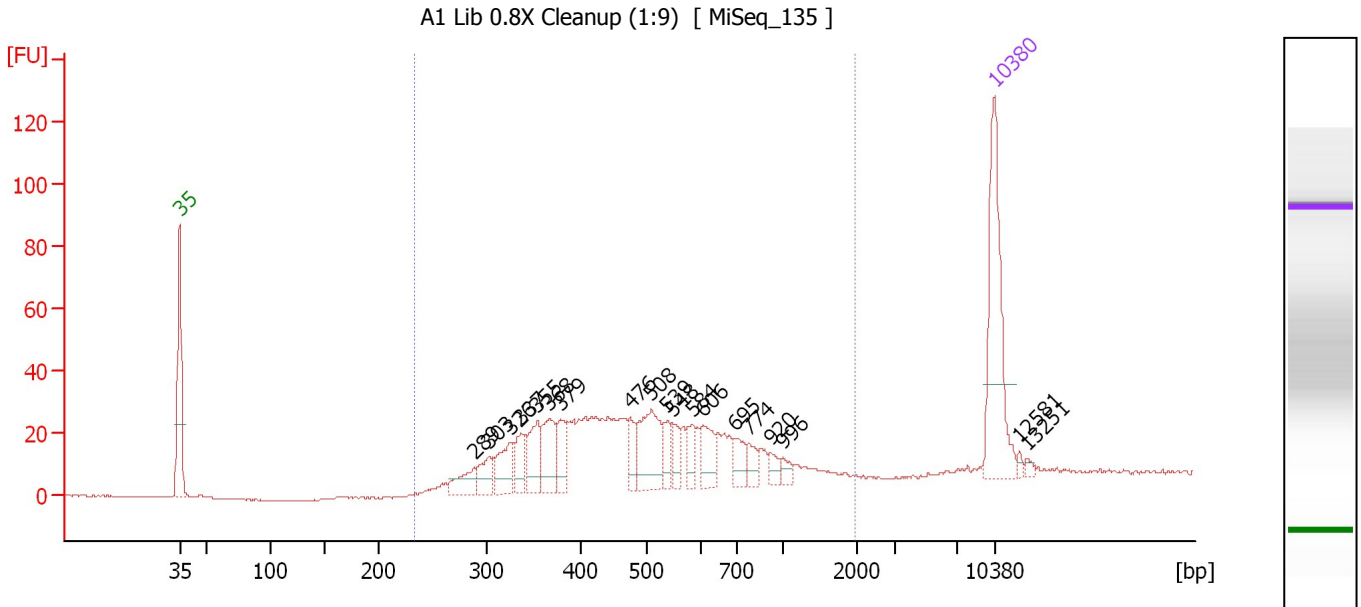
Peak table for Ladder

Peak	Size [bp]	Conc. [pg/μl]	Molarity [pmol/l]	Observations	Aligned Migration Time [s]
1	35	125.00	5,411.3	Lower Marker	43.00
2	50	150.00	4,545.5	Ladder Peak	45.28
3	100	150.00	2,272.7	Ladder Peak	50.79
4	150	150.00	1,515.2	Ladder Peak	55.52
5	200	150.00	1,136.4	Ladder Peak	60.17
6	300	150.00	757.6	Ladder Peak	69.32
7	400	150.00	568.2	Ladder Peak	77.39
8	500	150.00	454.5	Ladder Peak	83.08
9	600	150.00	378.8	Ladder Peak	87.77
10	700	150.00	324.7	Ladder Peak	90.87
11	1,000	150.00	227.3	Ladder Peak	94.83
12	2,000	150.00	113.6	Ladder Peak	101.20
13	3,000	150.00	75.8	Ladder Peak	104.48
14	7,000	150.00	32.5	Ladder Peak	109.77
15	10,380	75.00	10.9	Upper Marker	113.00
16	10,713	0.00	0.0		113.32

Assay Class: High Sensitivity DNA Assay
 Data Path: C:\...ents and Settings\Bioanalyzer\2015-07-16\2015-07-16_004.xad

Created: 7/16/2015 4:11:53 PM
 Modified: 7/16/2015 4:53:11 PM

Electropherogram Summary Continued ...



Overall Results for sample 1 : A1 Lib 0.8X Cleanup (1:9)

Number of peaks found: 19 Corr. Area 1: 608.6
 Noise: 0.2

Peak table for sample 1 : A1 Lib 0.8X Cleanup (1:9)

Peak	Size [bp]	Conc. [pg/μl]	Molarity [pmol/l]	Observations	Aligned Migration Time [s]
1	35	125.00	5,411.3	Lower Marker	43.00
2	289	21.45	112.5		68.32
3	303	20.68	103.3		69.60
4	326	28.41	132.0		71.43
5	337	20.82	93.5		72.35
6	355	31.16	133.2		73.72
7	368	34.02	140.2		74.77
8	379	20.26	81.0		75.69
9	476	16.68	53.1		81.69
10	508	50.23	149.7		83.47
11	539	15.73	44.3		84.89
12	548	13.75	38.0		85.35
13	584	14.48	37.5		87.04
14	606	21.57	53.9		87.96
15	695	14.22	31.0		90.70
16	774	10.89	21.3		91.85
17	920	7.05	11.6		93.77
18	996	6.32	9.6		94.78
19	10,380	75.00	10.9	Upper Marker	113.00
20	12,581	0.00	0.0		115.11
21	13,251	0.00	0.0		115.75

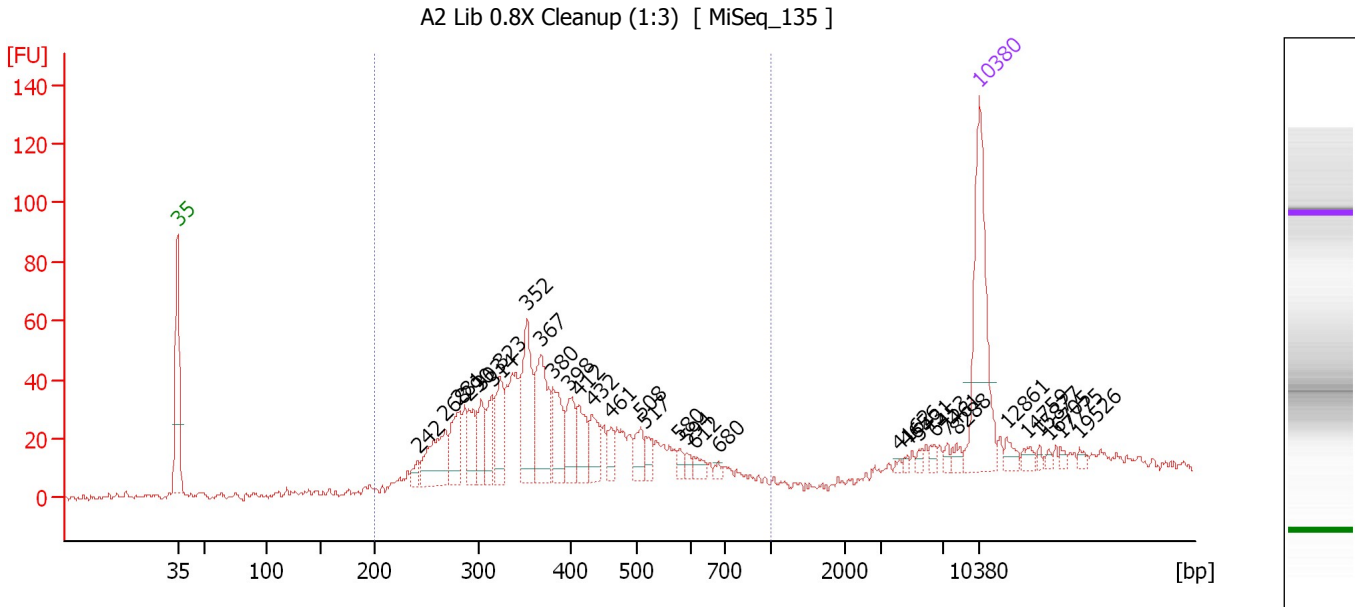
Region table for sample 1 : A1 Lib 0.8X Cleanup (1:9)

From [bp]	Average Size [bp]	To [bp]	Corr. Area	Molarity [pmol/l]	Co % of Ior Total	Size distribution in CV [%]	Conc. [pg/μl]
233	530	1,969	608.6	1,641.6	96	44.9	484.10

Assay Class: High Sensitivity DNA Assay
 Data Path: C:\...ents and Settings\Bioanalyzer\2015-07-16\2015-07-16_004.xad

Created: 7/16/2015 4:11:53 PM
 Modified: 7/16/2015 4:53:11 PM

Electropherogram Summary Continued ...



Overall Results for sample 2 : A2 Lib 0.8X Cleanup (1:3)

Number of peaks found: 32 Corr. Area 1: 800.7
 Noise: 0.9

Peak table for sample 2 : A2 Lib 0.8X Cleanup (1:3)

Peak	Size [bp]	Conc. [pg/μl]	Molarity [pmol/l]	Observations	Aligned Migration Time [s]
1	35	125.00	5,411.3	Lower Marker	43.00
2	242	8.89	55.6		64.04
3	268	49.49	280.2		66.36
4	281	34.59	186.3		67.62
5	290	26.32	137.5		68.41
6	303	27.07	135.6		69.53
7	314	21.19	102.2		70.46
8	323	32.67	153.4		71.16
9	352	62.96	270.9		73.53
10	367	60.32	248.9		74.74
11	380	34.46	137.4		75.77
12	398	25.96	98.9		77.21
13	412	25.57	94.1		78.05
14	432	22.14	77.6		79.21
15	461	10.39	34.2		80.84
16	508	15.19	45.3		83.45
17	517	9.63	28.2		83.86
18	580	5.27	13.8		86.84
19	594	4.47	11.4		87.49
20	612	6.93	17.2		88.15
21	680	2.88	6.4		90.24
22	4,162	1.66	0.6		106.02
23	4,656	1.76	0.6		106.67
24	5,431	2.39	0.7		107.69
25	6,453	3.67	0.9		109.04

Assay Class: High Sensitivity DNA Assay
 Data Path: C:\...ents and Settings\Bioanalyzer\2015-07-16\2015-07-16_004.xad

Created: 7/16/2015 4:11:53 PM
 Modified: 7/16/2015 4:53:11 PM

Electropherogram Summary Continued ...

... Peak table for sample 2 : A2 Lib 0.8X Cleanup (1:3)

Peak	Size [bp]	Conc. [pg/μl]	Molarity [pmol/l]	Observations	Aligned Migration Time [s]
26	7,461	2.73	0.6		110.21
27	8,288	4.35	0.8		111.00
28	10,380	75.00	10.9	Upper Marker	113.00
29	12,861	0.00	0.0		115.37
30	14,759	0.00	0.0		117.19
31	15,877	0.00	0.0		118.26
32	16,705	0.00	0.0		119.05
33	17,775	0.00	0.0		120.07
34	19,526	0.00	0.0		121.75

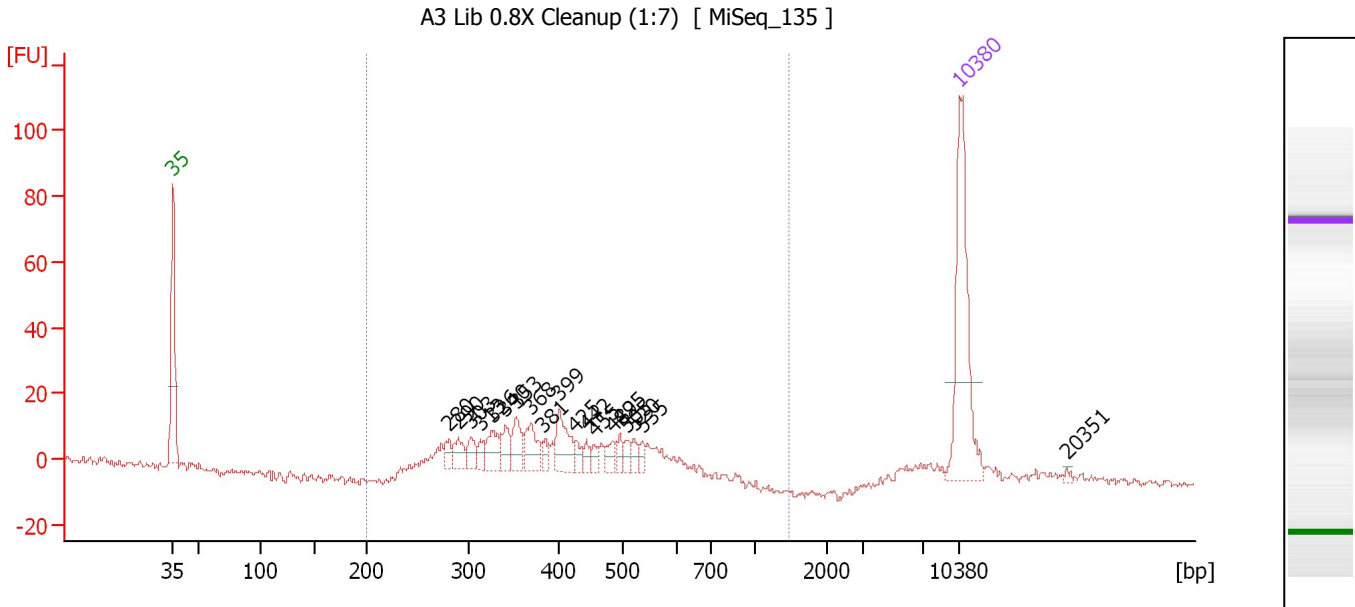
Region table for sample 2 : A2 Lib 0.8X Cleanup (1:3)

From [bp]	Average Size [bp]	To [bp]	Corr. Area	Molarity [pmol/l]	Co % of lor Total	Size distribution in CV [%]	Conc. [pg/μl]
200	383	1,000	800.7	2,778.5	89	25.7	646.02

Assay Class: High Sensitivity DNA Assay
 Data Path: C:\...ents and Settings\Bioanalyzer\2015-07-16\2015-07-16_004.xad

Created: 7/16/2015 4:11:53 PM
 Modified: 7/16/2015 4:53:11 PM

Electropherogram Summary Continued ...



Overall Results for sample 3 : A3 Lib 0.8X Cleanup (1:7)

Number of peaks found: 19 Corr. Area 1: 283.8
 Noise: 1.1

Peak table for sample 3 : A3 Lib 0.8X Cleanup (1:7)

Peak	Size [bp]	Conc. [pg/μl]	Molarity [pmol/l]	Observations	Aligned Migration Time [s]
1	35	125.00	5,411.3	Lower Marker	43.00
2	280	8.84	47.8		67.54
3	290	13.36	69.9		68.39
4	303	11.95	59.8		69.53
5	313	7.01	34.0		70.34
6	326	18.97	88.3		71.38
7	340	14.51	64.6		72.57
8	353	18.08	77.7		73.56
9	368	21.12	86.9		74.84
10	381	6.37	25.3		75.89
11	399	26.68	101.3		77.31
12	425	6.47	23.0		78.83
13	442	5.42	18.6		79.78
14	455	5.40	18.0		80.49
15	482	8.67	27.3		82.06
16	495	6.61	20.2		82.77
17	505	6.60	19.8		83.29
18	520	6.32	18.4		84.00
19	535	5.44	15.4		84.72
20	10,380	75.00	10.9	Upper Marker	113.00
21	20,351	0.00	0.0		122.54

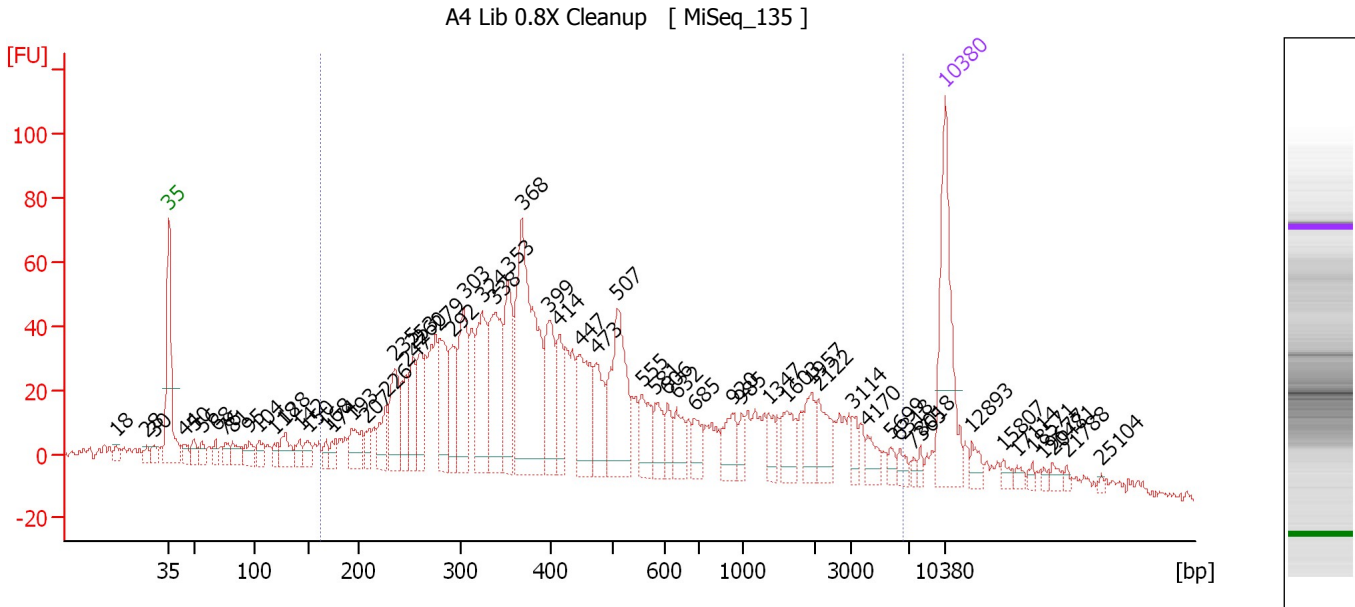
Region table for sample 3 : A3 Lib 0.8X Cleanup (1:7)

From [bp]	Average Size [bp]	To [bp]	Corr. Area	Molarity [pmol/l]	Co % of Ior Total	Size distribution in CV [%]	Conc. [pg/μl]
200	409	1,456	283.8	981.4	88	23.7	244.86

Assay Class: High Sensitivity DNA Assay
 Data Path: C:\...ents and Settings\Bioanalyzer\2015-07-16\2015-07-16_004.xad

Created: 7/16/2015 4:11:53 PM
 Modified: 7/16/2015 4:53:11 PM

Electropherogram Summary Continued ...



Overall Results for sample 4 : A4 Lib 0.8X Cleanup

Number of peaks found: 61 Corr. Area 1: 1,821.5
 Noise: 1.6

Peak table for sample 4 : A4 Lib 0.8X Cleanup

Peak	Size [bp]	Conc. [pg/μl]	Molarity [pmol/l]	Observations	Aligned Migration Time [s]
1	18	0.00	0.0		38.24
2	28	0.00	0.0		40.98
3	30	0.00	0.0		41.61
4	35	125.00	5,411.3	Lower Marker	43.00
5	44	12.37	424.1		44.39
6	50	13.22	401.5		45.26
7	56	10.69	287.3		45.98
8	68	10.26	229.6		47.23
9	76	11.39	228.4		48.10
10	81	17.59	328.0		48.72
11	95	18.24	290.3		50.26
12	104	14.56	213.1		51.13
13	118	10.38	133.0		52.52
14	128	23.19	273.6		53.48
15	142	12.95	138.1		54.78
16	150	12.86	130.2		55.50
17	168	9.19	82.9		57.18
18	174	9.71	84.7		57.71
19	193	29.72	233.7		59.49
20	207	13.19	96.6		60.79
21	226	27.23	182.4		62.57
22	235	49.83	321.1		63.38
23	247	35.18	216.1		64.44
24	253	32.62	195.4		65.02
25	260	37.18	216.4		65.69

Assay Class: High Sensitivity DNA Assay
 Data Path: C:\...ents and Settings\Bioanalyzer\2015-07-16\2015-07-16_004.xad

Created: 7/16/2015 4:11:53 PM
 Modified: 7/16/2015 4:53:11 PM

Electropherogram Summary Continued ...

... Peak table for sample 4 : A4 Lib 0.8X Cleanup

Peak	Size [bp]	Conc. [pg/μl]	Molarity [pmol/l]	Observations	Aligned Migration Time [s]
26	279	53.88	292.9		67.38
27	292	37.29	193.6		68.58
28	303	66.52	332.4		69.59
29	324	68.54	321.0		71.22
30	338	83.05	371.8		72.42
31	353	60.95	261.8		73.58
32	368	180.47	742.5		74.83
33	399	54.79	207.9		77.33
34	414	37.21	136.1		78.19
35	447	58.99	199.9		80.07
36	473	39.02	124.9		81.56
37	507	88.17	263.7		83.38
38	555	28.91	79.0		85.64
39	581	19.13	49.9		86.89
40	606	15.12	37.8		87.95
41	632	19.83	47.5		88.77
42	685	16.09	35.6		90.40
43	920	22.31	36.7		93.77
44	985	9.27	14.3		94.63
45	1,347	12.24	13.8		97.04
46	1,603	20.89	19.7		98.67
47	1,957	18.67	14.5		100.93
48	2,122	21.87	15.6		101.61
49	3,114	8.08	3.9		104.63
50	4,170	10.49	3.8		106.03
51	5,699	5.08	1.4		108.05
52	6,318	6.30	1.5		108.87
53	7,365	3.01	0.6		110.12
54	8,018	3.47	0.7		110.74
55	10,380	75.00	10.9	Upper Marker	113.00
56	12,893	0.00	0.0		115.40
57	15,807	0.00	0.0		118.19
58	17,114	0.00	0.0		119.44
59	18,571	0.00	0.0		120.84
60	19,677	0.00	0.0		121.89
61	20,481	0.00	0.0		122.66
62	21,788	0.00	0.0		123.91
63	25,104	0.00	0.0		127.09

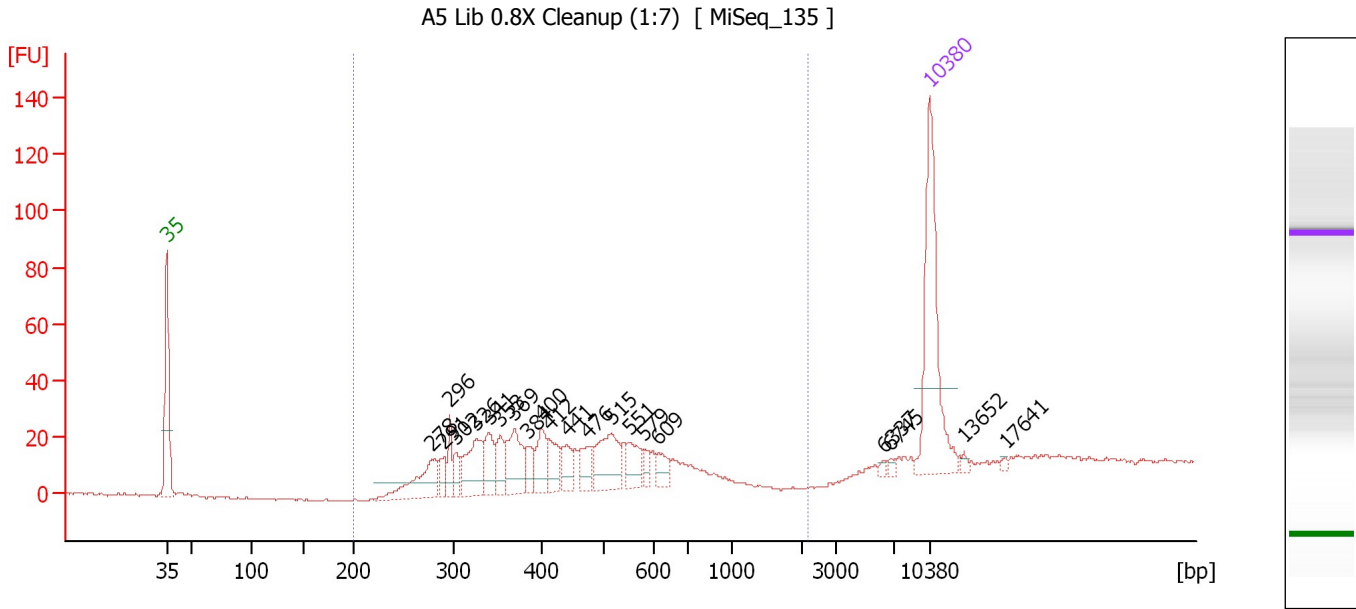
Region table for sample 4 : A4 Lib 0.8X Cleanup

From [bp]	Average Size [bp]	To [bp]	Corr. Area	Molarity [pmol/l]	Co % of lor Total	Size distribution in CV [%]	Conc. [pg/μl]
163	787	6,626	1,821.5	6,185.5	88	100.0	1,532.32

Assay Class: High Sensitivity DNA Assay
 Data Path: C:\...ents and Settings\Bioanalyzer\2015-07-16\2015-07-16_004.xad

Created: 7/16/2015 4:11:53 PM
 Modified: 7/16/2015 4:53:11 PM

Electropherogram Summary Continued ...



Overall Results for sample 5 : A5 Lib 0.8X Cleanup (1:7)

Number of peaks found: 21 Corr. Area 1: 377.7
 Noise: 0.3

Peak table for sample 5 : A5 Lib 0.8X Cleanup (1:7)


Peak	Size [bp]	Conc. [pg/μl]	Molarity [pmol/l]	Observations	Aligned Migration Time [s]
1	35	125.00	5,411.3	Lower Marker	43.00
2	278	41.91	228.4		67.31
3	291	11.85	61.7		68.49
4	296	13.99	71.5		68.97
5	302	10.83	54.3		69.51
6	326	36.72	170.7		71.42
7	341	22.95	102.1		72.59
8	353	16.60	71.2		73.62
9	369	32.79	134.6		74.89
10	384	11.29	44.6		76.07
11	400	20.26	76.7		77.39
12	412	18.75	69.0		78.07
13	441	15.78	54.2		79.74
14	476	14.72	46.9		81.69
15	515	37.69	110.8		83.80
16	551	17.51	48.2		85.46
17	579	6.37	16.7		86.78
18	609	9.93	24.7		88.05
19	6,337	1.70	0.4		108.89
20	6,745	2.15	0.5		109.43
21	10,380	75.00	10.9	Upper Marker	113.00
22	13,652	0.00	0.0		116.13
23	17,641	0.00	0.0		119.95

Assay Class: High Sensitivity DNA Assay
Data Path: C:\...ents and Settings\Bioanalyzer\2015-07-16\2015-07-16_004.xad

Created: 7/16/2015 4:11:53 PM
Modified: 7/16/2015 4:53:11 PM

Electropherogram Summary Continued ...

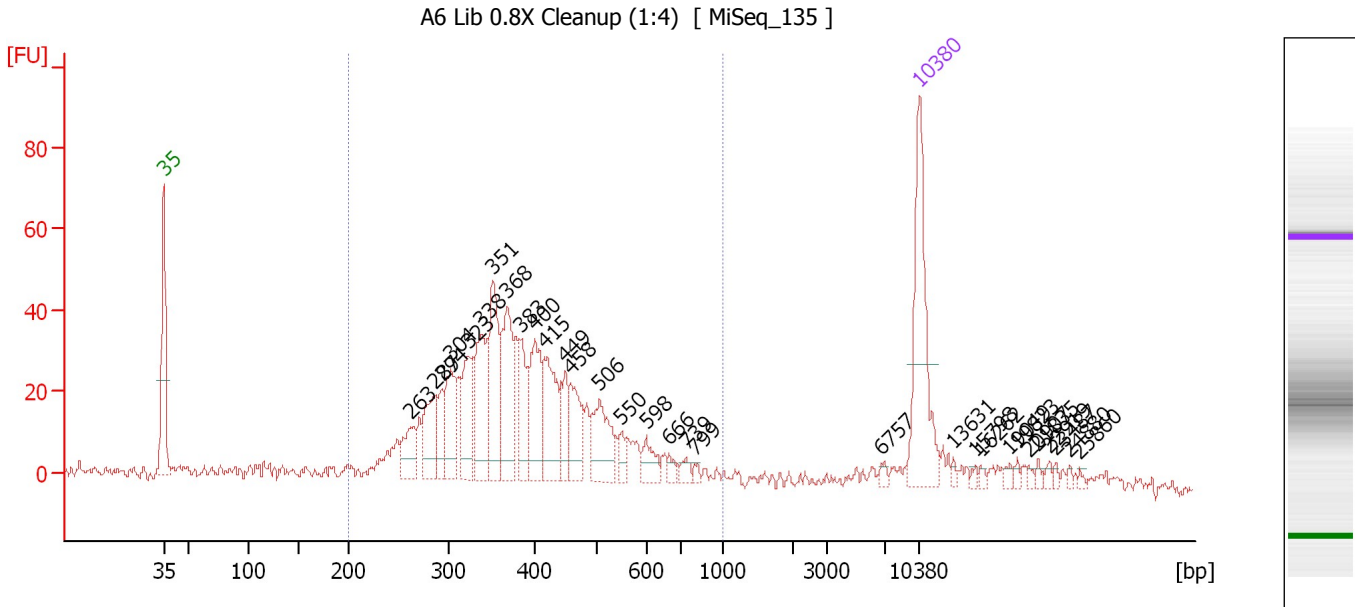
... Region table for sample 5 : A5 Lib 0.8X Cleanup (1:7)

From [bp]	Average Size [bp]	To [bp]	Corr. Area	Molarity [pmol/l]	Co % of lor Total	Size distribution in CV [%]	Conc. [pg/ μ l]
200	434	2,176	377.7	1,028.3	 87	26.0	268.67

Assay Class: High Sensitivity DNA Assay
 Data Path: C:\...ents and Settings\Bioanalyzer\2015-07-16\2015-07-16_004.xad

Created: 7/16/2015 4:11:53 PM
 Modified: 7/16/2015 4:53:11 PM

Electropherogram Summary Continued ...



Overall Results for sample 6 : A6 Lib 0.8X Cleanup (1:4)

Number of peaks found: 31 Corr. Area 1: 823.9
 Noise: 1.5

Peak table for sample 6 : A6 Lib 0.8X Cleanup (1:4)

Peak	Size [bp]	Conc. [pg/μl]	Molarity [pmol/l]	Observations	Aligned Migration Time [s]
1	35	125.00	5,411.3	Lower Marker	43.00
2	263	29.73	171.5		65.91
3	287	45.36	239.1		68.18
4	294	23.23	119.8		68.77
5	304	49.15	245.3		69.61
6	323	45.13	211.6		71.19
7	338	65.97	295.4		72.42
8	351	70.27	303.1		73.46
9	368	70.35	289.8		74.79
10	383	34.38	135.9		76.03
11	400	57.10	216.5		77.36
12	415	57.45	209.7		78.25
13	449	23.35	78.8		80.17
14	458	37.55	124.1		80.72
15	506	45.95	137.5		83.38
16	550	9.74	26.9		85.40
17	598	14.36	36.4		87.68
18	666	5.49	12.5		89.80
19	739	6.05	12.4		91.38
20	799	3.13	5.9		92.17
21	6,757	3.04	0.7		109.45
22	10,380	75.00	10.9	Upper Marker	113.00
23	13,631	0.00	0.0		116.11
24	15,798	0.00	0.0		118.18
25	16,262	0.00	0.0		118.63

Assay Class: High Sensitivity DNA Assay
 Data Path: C:\...ents and Settings\Bioanalyzer\2015-07-16\2015-07-16_004.xad

Created: 7/16/2015 4:11:53 PM
 Modified: 7/16/2015 4:53:11 PM

Electropherogram Summary Continued ...

... Peak table for sample 6 : A6 Lib 0.8X Cleanup (1:4)

Peak	Size [bp]	Conc. [pg/μl]	Molarity [pmol/l]	Observations	Aligned Migration Time [s]
26	19,049	0.00	0.0		121.29
27	19,823	0.00	0.0		122.03
28	20,907	0.00	0.0		123.07
29	21,835	0.00	0.0		123.96
30	22,919	0.00	0.0		125.00
31	23,487	0.00	0.0		125.54
32	24,880	0.00	0.0		126.87
33	25,860	0.00	0.0		127.81

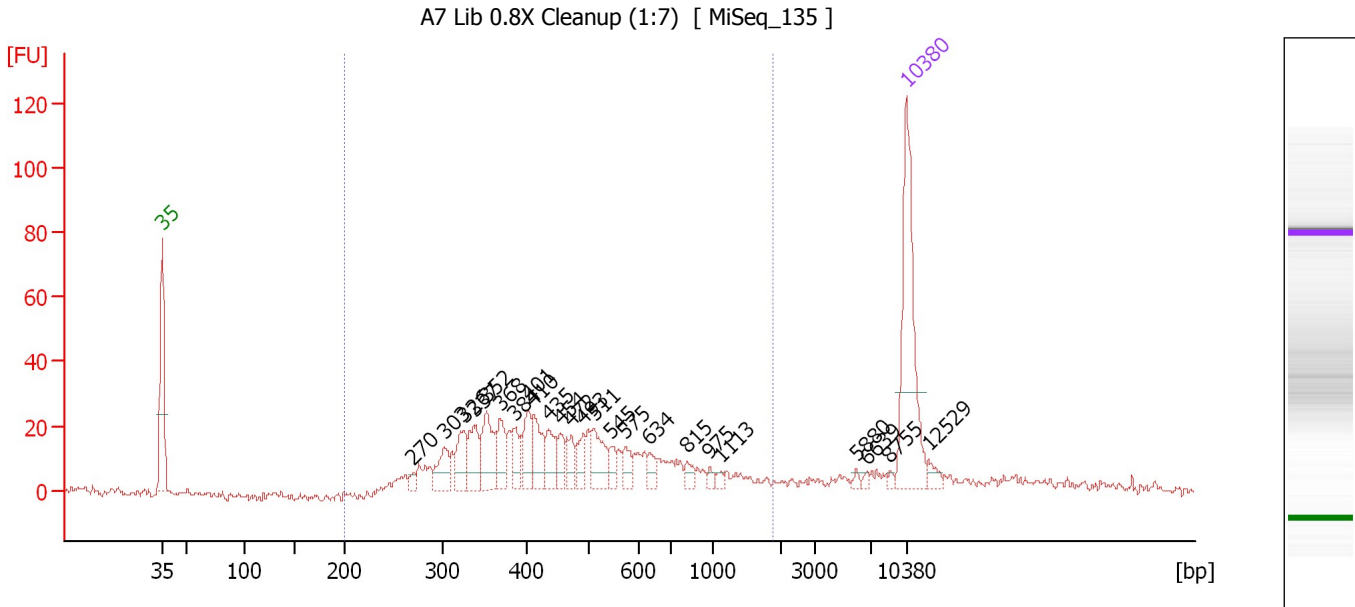
Region table for sample 6 : A6 Lib 0.8X Cleanup (1:4)

From [bp]	Average Size [bp]	To [bp]	Corr. Area	Molarity [pmol/l]	Co % of Ior Total	Size distribution in CV [%]	Conc. [pg/μl]
200	401	1,000	823.9	3,569.5	80	29.1	856.34

Assay Class: High Sensitivity DNA Assay
 Data Path: C:\...ents and Settings\Bioanalyzer\2015-07-16\2015-07-16_004.xad

Created: 7/16/2015 4:11:53 PM
 Modified: 7/16/2015 4:53:11 PM

Electropherogram Summary Continued ...



Overall Results for sample 7 : A7 Lib 0.8X Cleanup (1:7)

Number of peaks found: 24 Corr. Area 1: 560.0
 Noise: 1.2

Peak table for sample 7 : A7 Lib 0.8X Cleanup (1:7)

Peak	Size [bp]	Conc. [pg/μl]	Molarity [pmol/l]	Observations	Aligned Migration Time [s]
1	35	125.00	5,411.3	Lower Marker	43.00
2	270	4.50	25.2		66.62
3	303	21.35	106.9		69.53
4	326	23.76	110.6		71.38
5	337	25.43	114.2		72.33
6	352	33.74	145.1		73.54
7	368	21.06	86.8		74.79
8	384	16.88	66.6		76.09
9	401	21.79	82.3		77.45
10	410	24.55	90.7		77.95
11	435	19.50	68.0		79.35
12	454	12.53	41.8		80.46
13	472	13.82	44.3		81.51
14	493	13.07	40.2		82.66
15	511	24.23	71.8		83.62
16	545	8.86	24.7		85.17
17	575	10.52	27.7		86.57
18	634	7.14	17.1		88.83
19	815	6.57	12.2		92.39
20	975	3.08	4.8		94.50
21	1,113	3.04	4.1		95.55
22	5,880	2.32	0.6		108.29
23	6,639	1.91	0.4		109.29
24	8,755	1.95	0.3		111.45
25	10,380	75.00	10.9	Upper Marker	113.00


Assay Class: High Sensitivity DNA Assay
Data Path: C:\...ents and Settings\Bioanalyzer\2015-07-16\2015-07-16_004.xad

Created: 7/16/2015 4:11:53 PM
Modified: 7/16/2015 4:53:11 PM

Electropherogram Summary Continued ...**... Peak table for sample 7 : A7 Lib 0.8X Cleanup (1:7)**

Peak	Size [bp]	Conc. [pg/ μ l]	Molarity [pmol/l]	Observations	Aligned Migration Time [s]
26	12,529	0.00	0.0		115.06

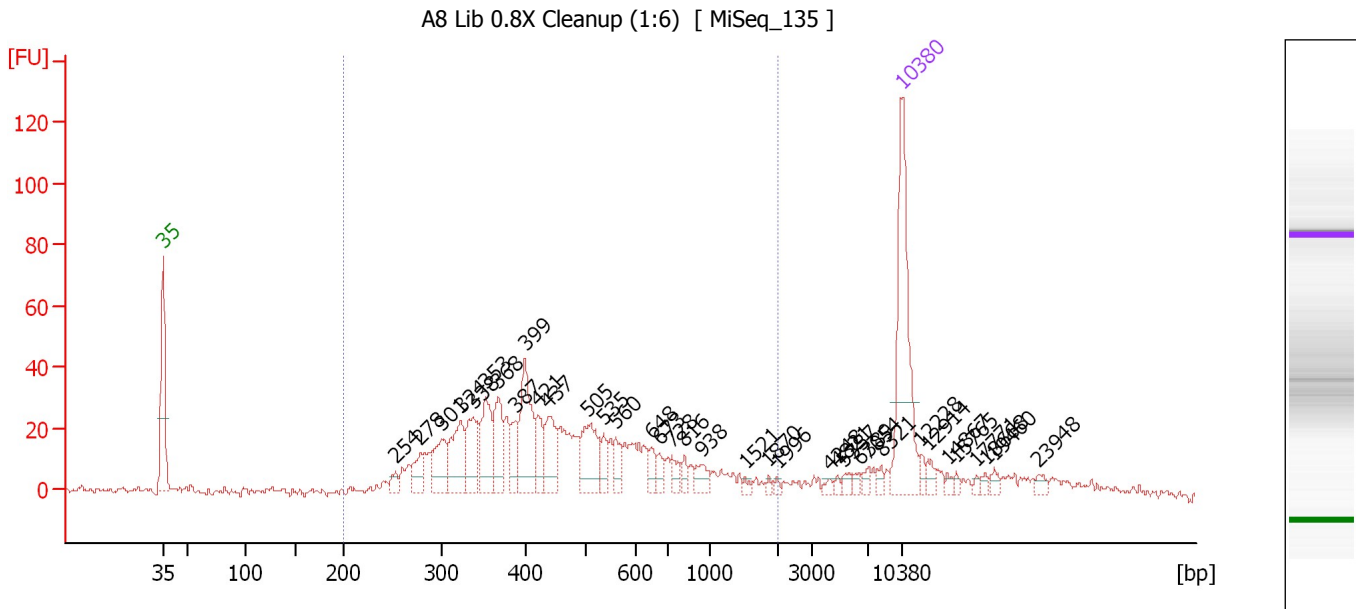
Region table for sample 7 : A7 Lib 0.8X Cleanup (1:7)

From [bp]	Average Size [bp]	To [bp]	Corr. Area	Molarity [pmol/l]	Co % of lor Total	Size distribution in CV [%]	Conc. [pg/ μ l]
200	515	1,872	560.0	1,622.0	 84	51.4	448.61

Assay Class: High Sensitivity DNA Assay
 Data Path: C:\...ents and Settings\Bioanalyzer\2015-07-16\2015-07-16_004.xad

Created: 7/16/2015 4:11:53 PM
 Modified: 7/16/2015 4:53:11 PM

Electropherogram Summary Continued ...



Overall Results for sample 8 : A8 Lib 0.8X Cleanup (1:6)

Number of peaks found: 36 Corr. Area 1: 789.3
 Noise: 1.1

Peak table for sample 8 : A8 Lib 0.8X Cleanup (1:6)

Peak	Size [bp]	Conc. [pg/μl]	Molarity [pmol/l]	Observations	Aligned Migration Time [s]
1	35	125.00	5,411.3	Lower Marker	43.00
2	254	7.09	42.3		65.07
3	278	16.16	87.9		67.34
4	301	29.48	148.4		69.41
5	324	39.88	186.7		71.23
6	338	34.32	153.8		72.39
7	353	38.51	165.3		73.61
8	368	31.91	131.6		74.77
9	387	18.13	71.0		76.33
10	399	52.39	199.0		77.29
11	421	19.18	69.1		78.56
12	437	27.99	97.1		79.46
13	505	38.11	114.4		83.30
14	535	10.45	29.6		84.72
15	560	12.96	35.1		85.88
16	648	8.53	19.9		89.26
17	673	7.50	16.9		90.02
18	728	7.75	16.1		91.23
19	816	5.29	9.8		92.39
20	938	8.80	14.2		94.01
21	1,521	2.29	2.3		98.15
22	1,870	1.68	1.4		100.37
23	1,996	1.74	1.3		101.18
24	4,248	2.29	0.8		106.13
25	4,821	1.95	0.6		106.89

Assay Class: High Sensitivity DNA Assay
 Data Path: C:\...ents and Settings\Bioanalyzer\2015-07-16\2015-07-16_004.xad

Created: 7/16/2015 4:11:53 PM
 Modified: 7/16/2015 4:53:11 PM

Electropherogram Summary Continued ...

... Peak table for sample 8 : A8 Lib 0.8X Cleanup (1:6)

Peak	Size [bp]	Conc. [pg/μl]	Molarity [pmol/l]	Observations	Aligned Migration Time [s]
26	5,357	3.46	1.0		107.60
27	6,389	3.17	0.8		108.96
28	7,054	3.27	0.7		109.82
29	8,321	3.20	0.6		111.03
30	10,380	75.00	10.9	Upper Marker	113.00
31	12,228	0.00	0.0		114.77
32	12,914	0.00	0.0		115.42
33	14,867	0.00	0.0		117.29
34	15,765	0.00	0.0		118.15
35	17,771	0.00	0.0		120.07
36	18,668	0.00	0.0		120.93
37	19,460	0.00	0.0		121.69
38	23,948	0.00	0.0		125.98

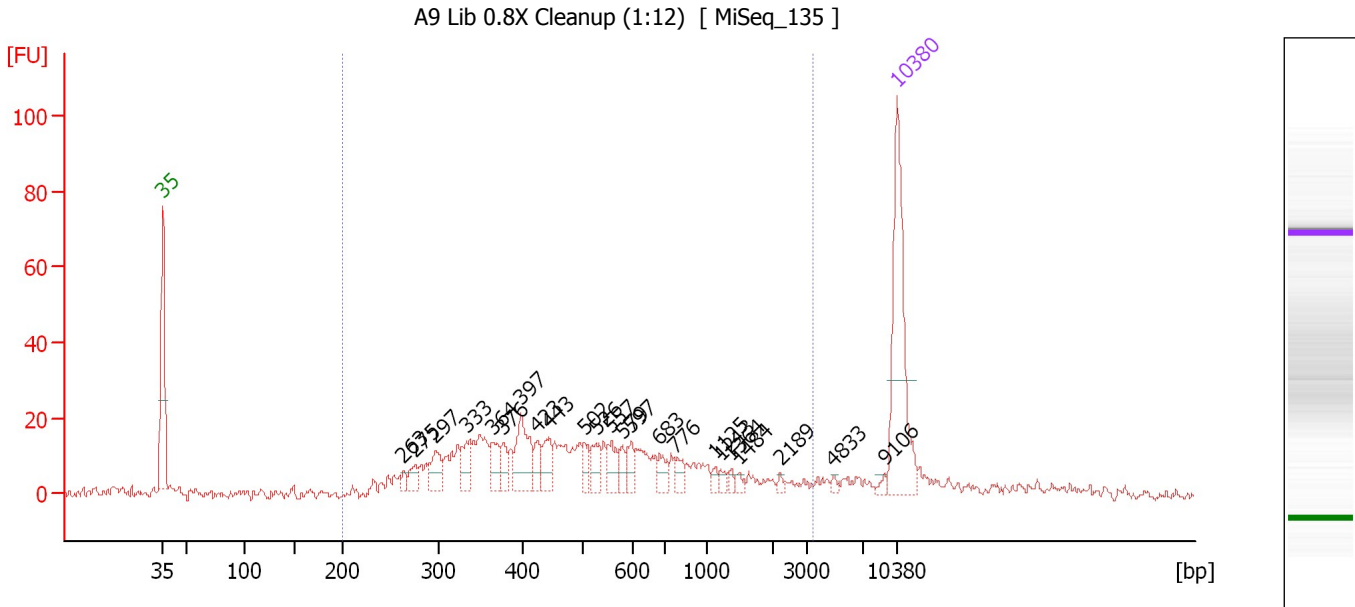
Region table for sample 8 : A8 Lib 0.8X Cleanup (1:6)

From [bp]	Average Size [bp]	To [bp]	Corr. Area	Molarity [pmol/l]	Co % of lor Total	Size distribution in CV [%]	Conc. [pg/μl]
200	523	1,998	789.3	2,261.8	78	57.2	613.46

Assay Class: High Sensitivity DNA Assay
 Data Path: C:\...ents and Settings\Bioanalyzer\2015-07-16\2015-07-16_004.xad

Created: 7/16/2015 4:11:53 PM
 Modified: 7/16/2015 4:53:11 PM

Electropherogram Summary Continued ...



Overall Results for sample 9 : A9 Lib 0.8X Cleanup (1:12)

Number of peaks found: 23 Corr. Area 1: 467.0
 Noise: 1.4


Peak table for sample 9 : A9 Lib 0.8X Cleanup (1:12)

Peak	Size [bp]	Conc. [pg/μl]	Molarity [pmol/l]	Observations	Aligned Migration Time [s]
1	35	125.00	5,411.3	Lower Marker	43.00
2	263	4.90	28.2		65.96
3	275	9.89	54.5		67.03
4	297	18.93	96.7		69.01
5	333	16.57	75.5		71.96
6	364	16.52	68.7		74.49
7	376	11.31	45.5		75.46
8	397	36.56	139.6		77.14
9	423	11.13	39.8		78.71
10	443	16.31	55.8		79.83
11	502	10.15	30.6		83.18
12	526	13.31	38.3		84.30
13	557	14.22	38.7		85.77
14	579	7.80	20.4		86.79
15	597	10.38	26.3		87.65
16	683	9.75	21.6		90.34
17	776	8.29	16.2		91.87
18	1,125	3.35	4.5		95.63
19	1,213	3.94	4.9		96.19
20	1,364	2.83	3.1		97.15
21	1,484	3.09	3.2		97.91
22	2,189	2.03	1.4		101.82
23	4,833	2.19	0.7		106.90
24	9,106	2.34	0.4		111.78
25	10,380	75.00	10.9	Upper Marker	113.00

Assay Class: High Sensitivity DNA Assay
Data Path: C:\...ents and Settings\Bioanalyzer\2015-07-16\2015-07-16_004.xad

Created: 7/16/2015 4:11:53 PM
Modified: 7/16/2015 4:53:11 PM

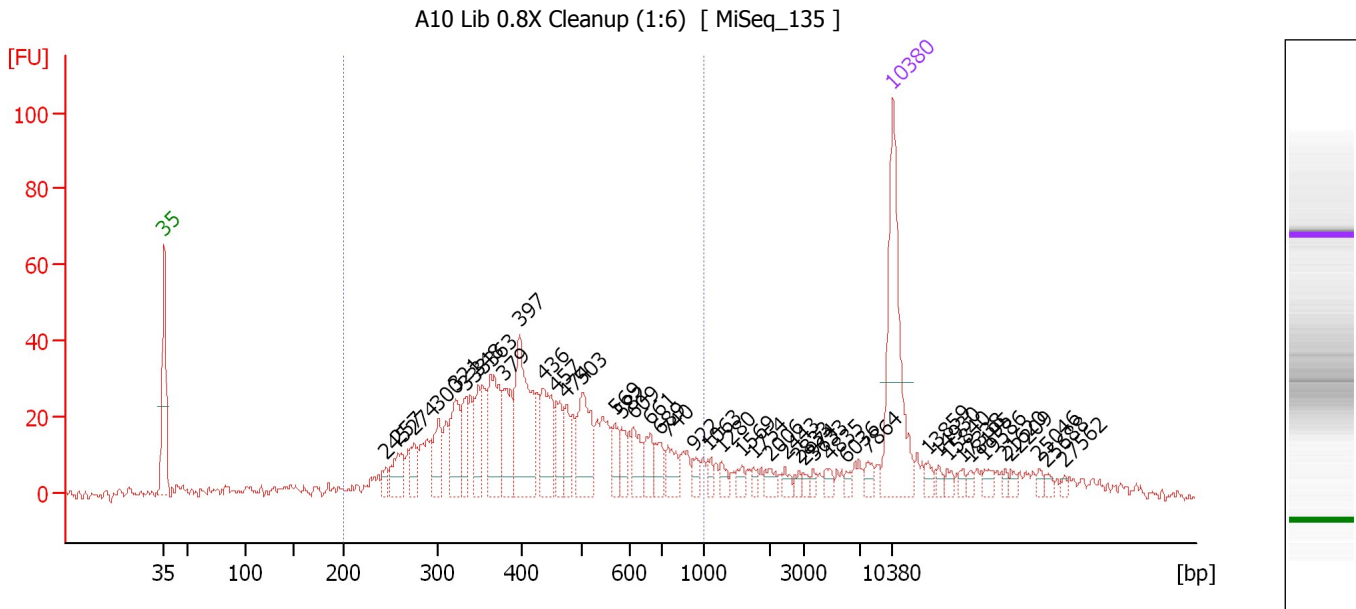
Electropherogram Summary Continued ...**... Region table for sample 9 : A9 Lib 0.8X Cleanup (1:12)**

From [bp]	Average Size [bp]	To [bp]	Corr. Area	Molarity [pmol/l]	Co % of lor Total	Size distribution in CV [%]	Conc. [pg/μl]
200	609	3,383	467.0	1,575.7	 88	74.8	446.80

Assay Class: High Sensitivity DNA Assay
 Data Path: C:\...ents and Settings\Bioanalyzer\2015-07-16\2015-07-16_004.xad

Created: 7/16/2015 4:11:53 PM
 Modified: 7/16/2015 4:53:11 PM

Electropherogram Summary Continued ...



Overall Results for sample 10 : A10 Lib 0.8X Cleanup (1:6)

Number of peaks found: 44 Corr. Area 1: 795.4
 Noise: 1.4

Peak table for sample 10 : A10 Lib 0.8X Cleanup (1:6)

Peak	Size [bp]	Conc. [pg/μl]	Molarity [pmol/l]	Observations	Aligned Migration Time [s]
1	35	125.00	5,411.3	Lower Marker	43.00
2	245	8.12	50.2		64.30
3	257	23.54	138.6		65.43
4	274	14.48	80.0		66.96
5	300	25.56	129.1		69.32
6	321	35.94	169.7		71.01
7	333	22.36	101.8		71.98
8	348	23.70	103.1		73.21
9	363	51.73	216.0		74.39
10	379	36.01	144.1		75.67
11	397	75.81	289.2		77.16
12	436	41.24	143.5		79.41
13	457	21.87	72.5		80.64
14	474	17.87	57.1		81.61
15	503	42.12	127.0		83.20
16	569	11.78	31.4		86.32
17	582	12.61	32.8		86.94
18	609	16.78	41.7		88.06
19	661	14.38	33.0		89.65
20	689	12.97	28.5		90.52
21	740	14.33	29.3		91.39
22	922	6.87	11.3		93.80
23	1,063	4.72	6.7		95.23
24	1,280	5.45	6.5		96.61
25	1,569	5.09	4.9		98.46

Assay Class: High Sensitivity DNA Assay
 Data Path: C:\...ents and Settings\Bioanalyzer\2015-07-16\2015-07-16_004.xad

Created: 7/16/2015 4:11:53 PM
 Modified: 7/16/2015 4:53:11 PM

Electropherogram Summary Continued ...

... Peak table for sample 10 : A10 Lib 0.8X Cleanup (1:6)

Peak	Size [bp]	Conc. [pg/μl]	Molarity [pmol/l]	Observations	Aligned Migration Time [s]
26	1,754	3.49	3.0		99.63
27	2,006	5.62	4.2		101.22
28	2,443	3.98	2.5		102.66
29	2,833	2.98	1.6		103.94
30	2,974	2.61	1.3		104.40
31	3,633	2.62	1.1		105.32
32	4,835	4.44	1.4		106.91
33	6,036	2.69	0.7		108.49
34	7,864	5.70	1.1		110.59
35	10,380	75.00	10.9	Upper Marker	113.00
36	13,859	0.00	0.0		116.33
37	14,930	0.00	0.0		117.35
38	15,840	0.00	0.0		118.22
39	17,338	0.00	0.0		119.66
40	18,195	0.00	0.0		120.48
41	19,586	0.00	0.0		121.81
42	21,620	0.00	0.0		123.75
43	22,209	0.00	0.0		124.32
44	25,046	0.00	0.0		127.03
45	25,688	0.00	0.0		127.65
46	27,562	0.00	0.0		129.44

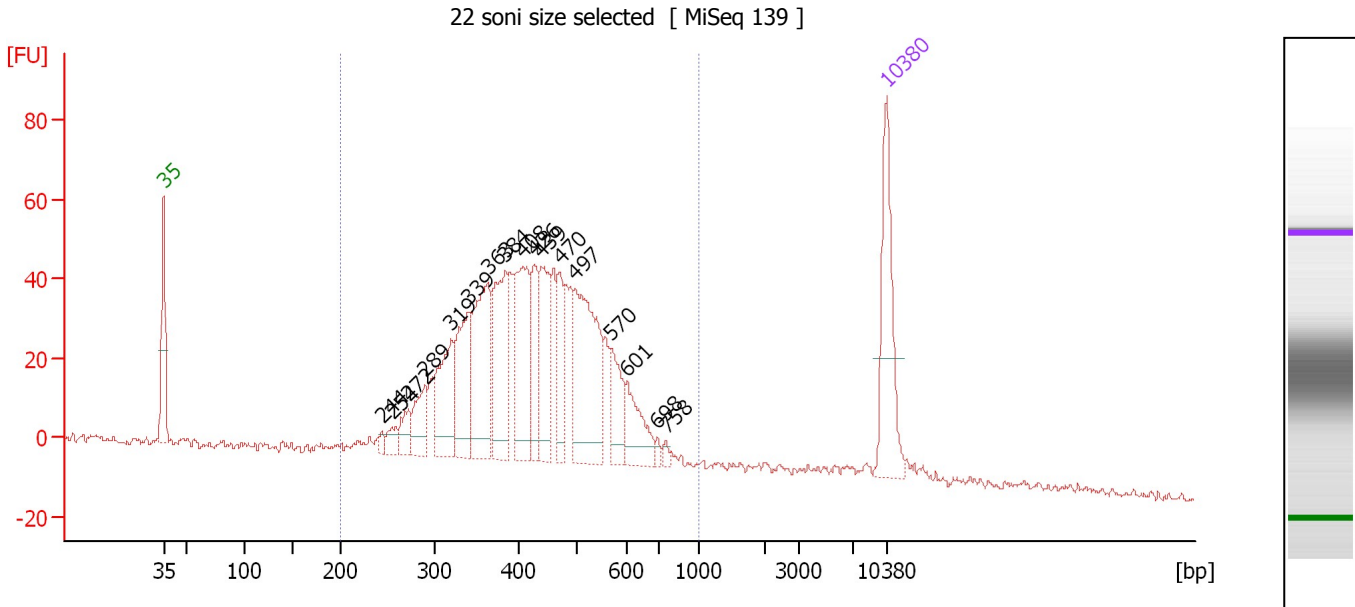
Region table for sample 10 : A10 Lib 0.8X Cleanup (1:6)

From [bp]	Average Size [bp]	To [bp]	Corr. Area	Molarity [pmol/l]	Co % of lor Total	Size distribution in CV [%]	Conc. [pg/μl]
200	451	1,000	795.4	2,803.7	75	33.9	724.97

Assay Class: High Sensitivity DNA Assay
 Data Path: C:\...ents and Settings\Bioanalyzer\2015-07-16\2015-07-16_004.xad

Created: 7/16/2015 4:11:53 PM
 Modified: 7/16/2015 4:53:11 PM

Electropherogram Summary Continued ...



Overall Results for sample 11 : 22 soni size selected

Number of peaks found: 17 Corr. Area 1: 1,100.1
 Noise: 1.2

Peak table for sample 11 : 22 soni size selected

Peak	Size [bp]	Conc. [pg/μl]	Molarity [pmol/l]	Observations	Aligned Migration Time [s]
1	35	125.00	5,411.3	Lower Marker	43.00
2	244	6.38	39.7		64.17
3	254	13.89	82.7		65.15
4	272	22.02	122.7		66.75
5	289	40.80	214.1		68.29
6	319	80.55	383.0		70.82
7	339	84.12	375.9		72.48
8	363	119.00	497.0		74.39
9	384	102.30	403.7		76.09
10	408	104.25	387.1		77.85
11	426	50.31	178.8		78.88
12	439	75.85	261.8		79.60
13	470	40.64	131.1		81.36
14	497	141.19	430.5		82.90
15	570	41.90	111.4		86.36
16	601	42.02	105.9		87.81
17	698	4.51	9.8		90.80
18	758	4.37	8.7		91.63
19	10,380	75.00	10.9	Upper Marker	113.00

Region table for sample 11 : 22 soni size selected

From [bp]	Average Size [bp]	To [bp]	Corr. Area	Molarity [pmol/l]	Co % of Ior Total	Size distribution in CV [%]	Conc. [pg/μl]
200	434	1,000	1,100.1	4,504.1	93	25.0	1,185.49

Assay Class: High Sensitivity DNA Assay
Data Path: C:\...ents and Settings\Bioanalyzer\2015-07-16\2015-07-16_004.xad

Created: 7/16/2015 4:11:53 PM
Modified: 7/16/2015 4:53:11 PM

Gel Image

