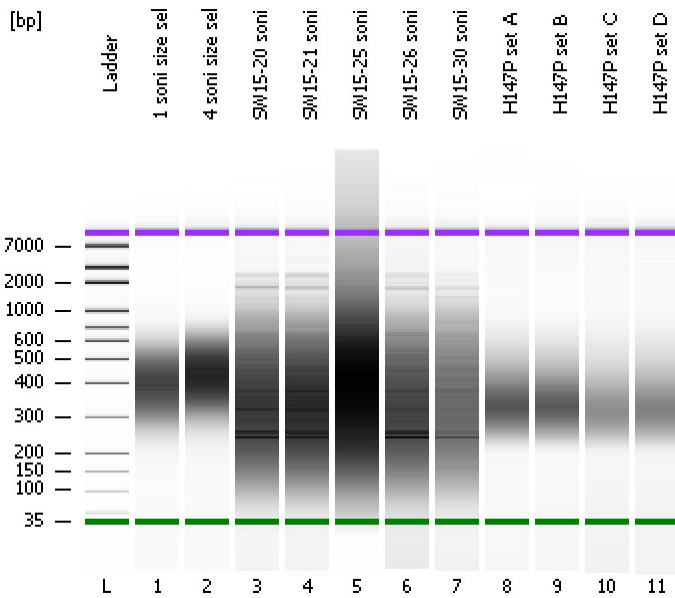


Assay Class: High Sensitivity DNA Assay
Data Path: C:\...ents and Settings\Bioanalyzer\2015-07-17\2015-07-17_001.xad

Created: 7/17/2015 8:45:53 AM
Modified: 7/17/2015 9:41:14 AM

Electrophoresis File Run Summary



Instrument Information:

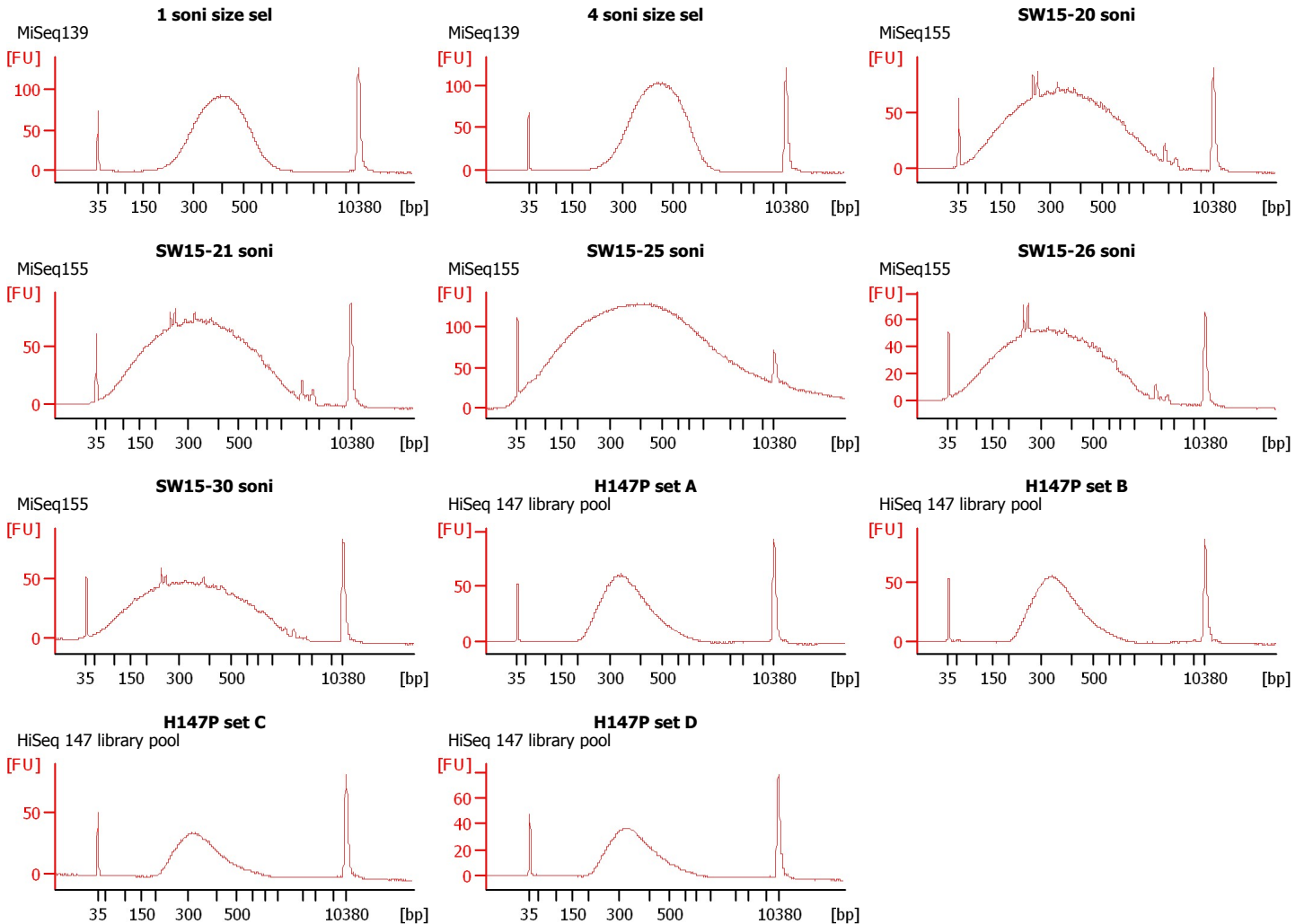
Instrument Name: DE13701086 Firmware: C.01.069
Serial#: DE13701086 Type: G2938B

Assay Information:

Assay Origin Path: C:\Program Files\Agilent\2100 bioanalyzer\2100 expert\assays\dsDNA\High Sensitivity DNA.xsy
Assay Class: High Sensitivity DNA Assay
Version: 1.03
Assay Comments: Copyright © 2003-2010 Agilent Technologies

Chip Information:

Chip Lot #:
Reagent Kit Lot #:
Chip Comments:



Assay Class: High Sensitivity DNA Assay
Data Path: C:\...ents and Settings\Bioanalyzer\2015-07-17\2015-07-17_001.xad

Created: 7/17/2015 8:45:53 AM
Modified: 7/17/2015 9:41:14 AM

Electrophoresis File Run Summary (Chip Summary)

Sample Name	Sample Comment	Rest. Digest	Status	Observation	Result Label	Result Color
1 soni size sel	MiSeq139	<input type="checkbox"/>	✓			
4 soni size sel	MiSeq139	<input type="checkbox"/>	✓			
SW15-20 soni	MiSeq155	<input type="checkbox"/>	✓			
SW15-21 soni	MiSeq155	<input type="checkbox"/>	✓			
SW15-25 soni	MiSeq155	<input type="checkbox"/>	✓			
SW15-26 soni	MiSeq155	<input type="checkbox"/>	✓			
SW15-30 soni	MiSeq155	<input type="checkbox"/>	✓			
H147P set A	HiSeq 147 library pool	<input type="checkbox"/>	✓			
H147P set B	HiSeq 147 library pool	<input type="checkbox"/>	✓			
H147P set C	HiSeq 147 library pool	<input type="checkbox"/>	✓			
H147P set D	HiSeq 147 library pool	<input type="checkbox"/>	✓			
Ladder		<input type="checkbox"/>	✓			

Chip Lot #

Reagent Kit Lot #

Chip Comments :

Assay Class: High Sensitivity DNA Assay
Data Path: C:\...ents and Settings\Bioanalyzer\2015-07-17\2015-07-17_001.xad

Created: 7/17/2015 8:45:53 AM
Modified: 7/17/2015 9:41:14 AM

Electrophoresis Assay Details

General Analysis Settings

Number of Available Sample and Ladder Wells (Max.) : 12
Minimum Visible Range [s] : 32
Maximum Visible Range [s] : 138
Start Analysis Time Range [s] : 33
End Analysis Time Range [s] : 137.5
Ladder Concentration [pg/μl] : 1950
Uses Standard Area for Ladder Fragments
Lower Marker Concentration [pg/μl] : 125
Upper Marker Concentration [pg/μl] : 75
Used Upper Marker for Quantitation
Standard Curve Fit is Point to Point
Show Data Aligned to Lower and Upper Marker

Integrator Settings

Integration Start Time [s] : 33.05
Integration End Time [s] : 137
Slope Threshold : 0.8
Height Threshold [FU] : 5
Area Threshold : 0.1
Width Threshold [s] : 0.6
Baseline Plateau [s] : 0.5

Filter Settings

Filter Width [s] : 0.5
Polynomial Order : 4

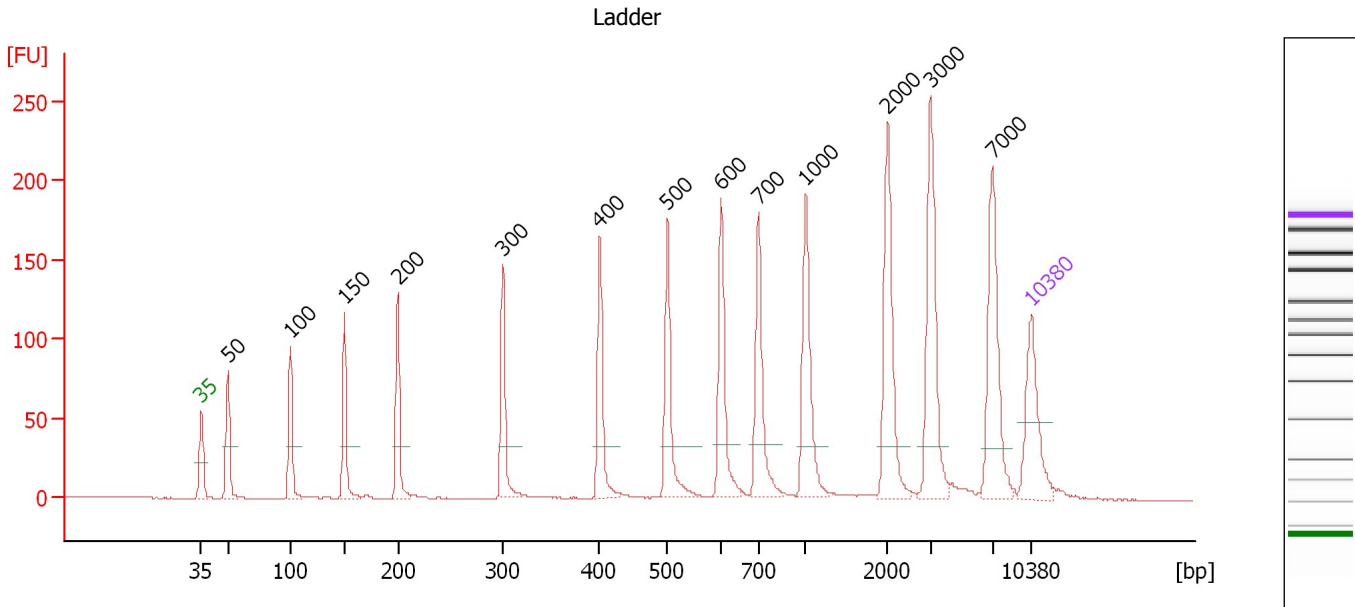
Ladder

Ladder Peak	Size	Area
1	35	160
2	50	210
3	100	208
4	150	221
5	200	242
6	300	270
7	400	305
8	500	306
9	600	336
10	700	321
11	1000	366
12	2000	413
13	3000	411
14	7000	400
15	10380	214

Assay Class: High Sensitivity DNA Assay
 Data Path: C:\...ents and Settings\Bioanalyzer\2015-07-17\2015-07-17_001.xad

Created: 7/17/2015 8:45:53 AM
 Modified: 7/17/2015 9:41:14 AM

Electropherogram Summary



Overall Results for Ladder

Noise: 0.2

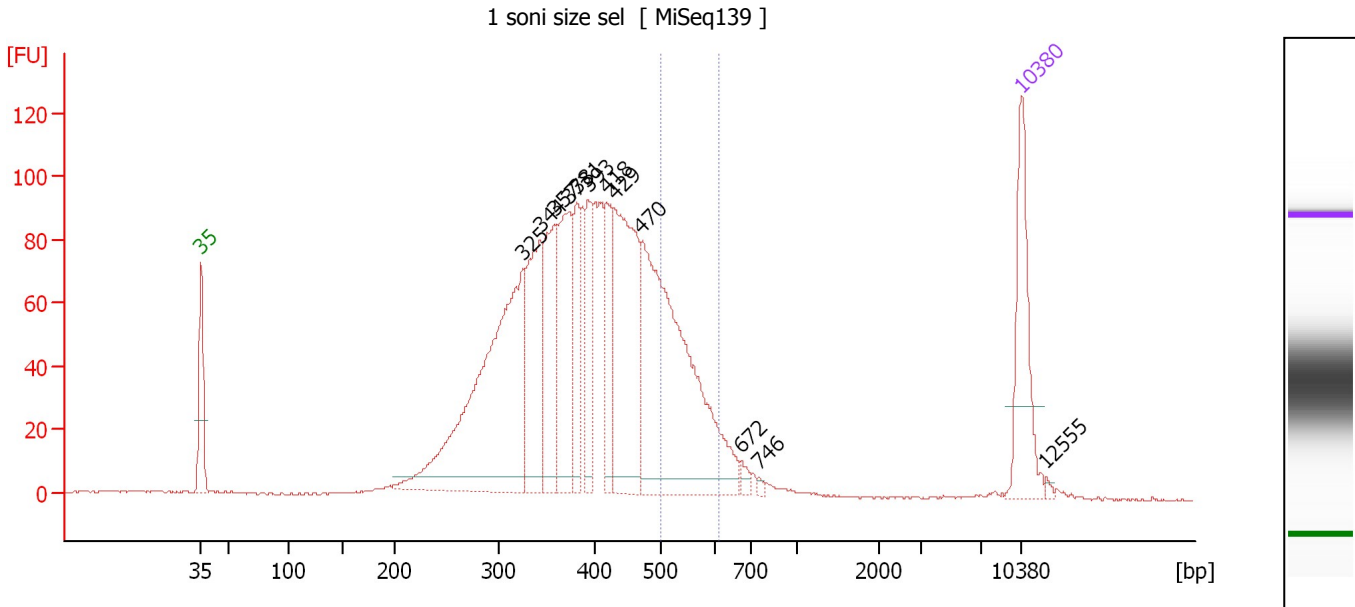
Peak table for Ladder

Peak	Size [bp]	Conc. [pg/μl]	Molarity [pmol/l]	Observations	Aligned Migration Time [s]
1	35	125.00	5,411.3	Lower Marker	43.00
2	50	150.00	4,545.5	Ladder Peak	45.25
3	100	150.00	2,272.7	Ladder Peak	50.51
4	150	150.00	1,515.2	Ladder Peak	55.05
5	200	150.00	1,136.4	Ladder Peak	59.54
6	300	150.00	757.6	Ladder Peak	68.40
7	400	150.00	568.2	Ladder Peak	76.58
8	500	150.00	454.5	Ladder Peak	82.29
9	600	150.00	378.8	Ladder Peak	86.83
10	700	150.00	324.7	Ladder Peak	89.98
11	1,000	150.00	227.3	Ladder Peak	93.94
12	2,000	150.00	113.6	Ladder Peak	100.86
13	3,000	150.00	75.8	Ladder Peak	104.46
14	7,000	150.00	32.5	Ladder Peak	109.67
15	10,380	75.00	10.9	Upper Marker	113.00

Assay Class: High Sensitivity DNA Assay
 Data Path: C:\...ents and Settings\Bioanalyzer\2015-07-17\2015-07-17_001.xad

Created: 7/17/2015 8:45:53 AM
 Modified: 7/17/2015 9:41:14 AM

Electropherogram Summary Continued ...



Overall Results for sample 1 : 1 soni size sel

Number of peaks found: 12 Corr. Area 1: 263.5
 Noise: 0.2

Peak table for sample 1 : 1 soni size sel

Peak	Size [bp]	Conc. [pg/μl]	Molarity [pmol/l]	Observations	Aligned Migration Time [s]
1	35	125.00	5,411.3	Lower Marker	43.00
2	325	391.27	1,823.0		70.46
3	344	136.79	603.3		71.97
4	357	114.49	485.3		73.10
5	373	130.17	528.7		74.38
6	381	63.78	253.4		75.06
7	393	67.65	260.8		76.02
8	418	65.31	236.7		77.61
9	429	201.96	713.0		78.25
10	470	370.21	1,193.8		80.57
11	672	7.40	16.7		89.09
12	746	2.72	5.5		90.59
13	10,380	75.00	10.9	Upper Marker	113.00
14	12,555	0.00	0.0		115.14

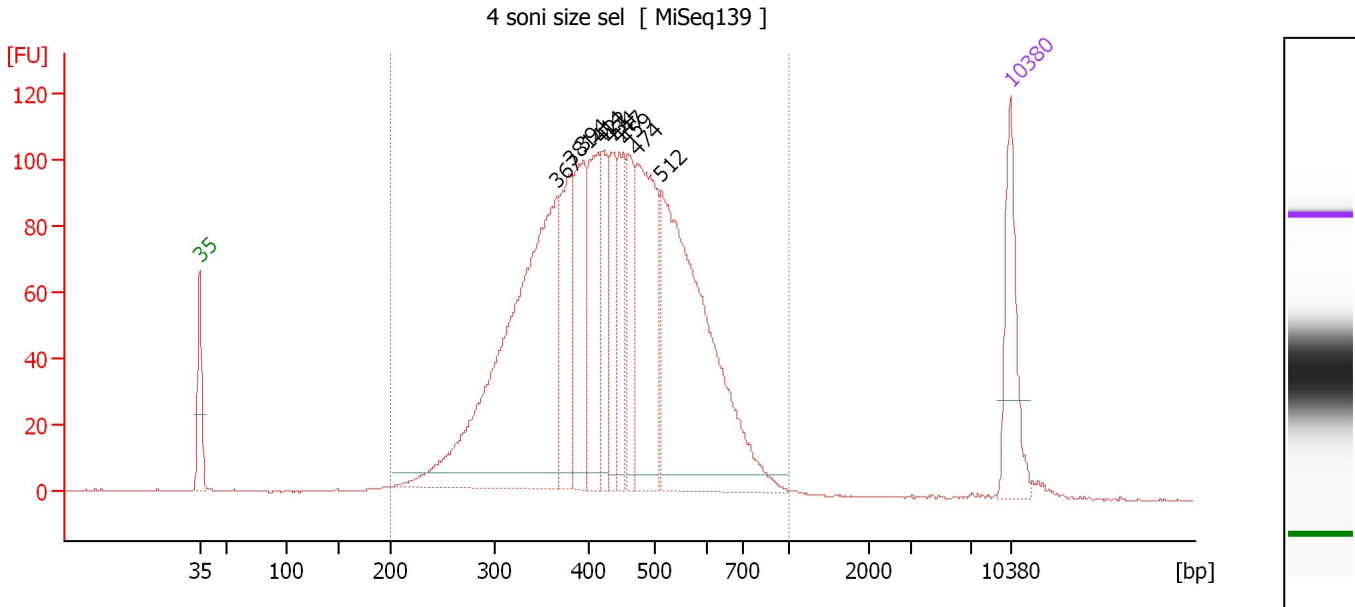
Region table for sample 1 : 1 soni size sel

From [bp]	Average Size [bp]	To [bp]	Corr. Area	Molarity [pmol/l]	Co % of Ior Total	Size distribution in CV [%]	Conc. [pg/μl]
500	544	612	263.5	554.7	12	5.6	198.83

Assay Class: High Sensitivity DNA Assay
 Data Path: C:\...ents and Settings\Bioanalyzer\2015-07-17\2015-07-17_001.xad

Created: 7/17/2015 8:45:53 AM
 Modified: 7/17/2015 9:41:14 AM

Electropherogram Summary Continued ...



Overall Results for sample 2 : 4 soni size sel

Number of peaks found: 10 Corr. Area 1: 2,380.2
 Noise: 0.1

Peak table for sample 2 : 4 soni size sel

Peak	Size [bp]	Conc. [pg/μl]	Molarity [pmol/l]	Observations	Aligned Migration Time [s]
1	35	125.00	5,411.3	Lower Marker	43.00
2	367	600.88	2,483.0		73.86
3	381	137.44	547.0		75.01
4	394	140.87	541.4		76.11
5	414	135.95	497.2		77.40
6	422	82.34	295.9		77.82
7	434	92.04	321.6		78.51
8	447	69.58	236.1		79.24
9	459	84.04	277.6		79.93
10	474	221.81	709.0		80.81
11	512	468.30	1,386.0		82.84
12	10,380	75.00	10.9	Upper Marker	113.00

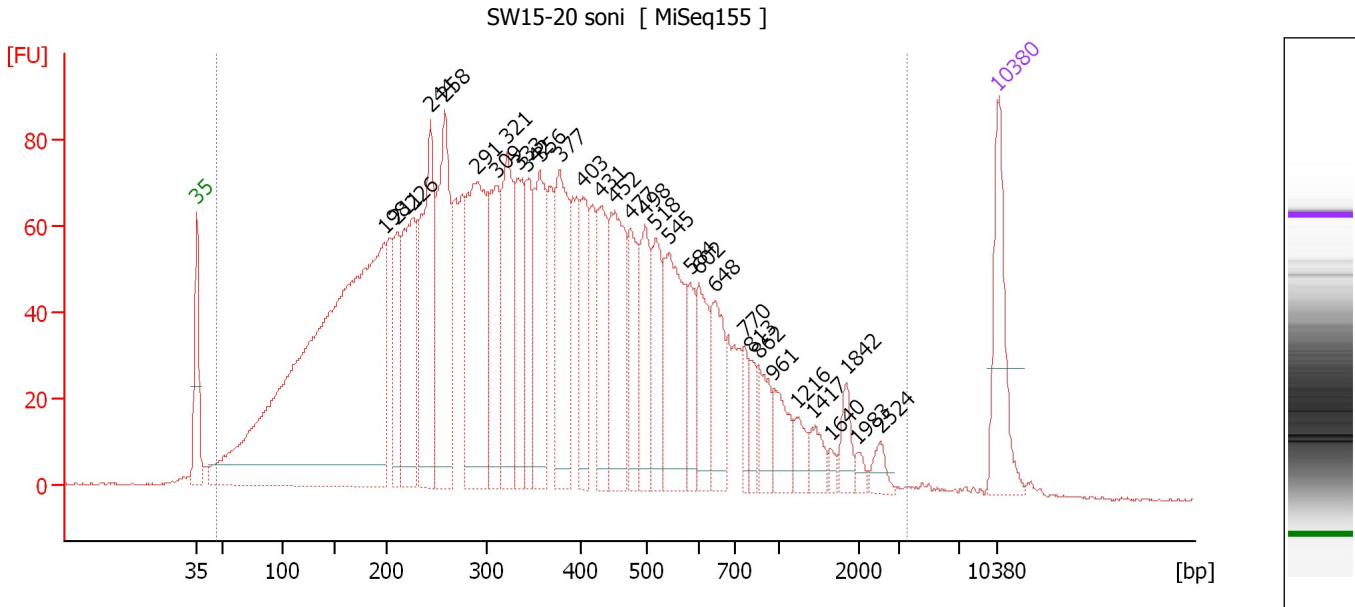
Region table for sample 2 : 4 soni size sel

From [bp]	Average Size [bp]	To [bp]	Corr. Area	Molarity [pmol/l]	Co % of lor Total	Size distribution in CV [%]	Conc. [pg/μl]
200	442	1,000	2,380.2	8,076.9	98	24.8	2,163.55

Assay Class: High Sensitivity DNA Assay
 Data Path: C:\...ents and Settings\Bioanalyzer\2015-07-17\2015-07-17_001.xad

Created: 7/17/2015 8:45:53 AM
 Modified: 7/17/2015 9:41:14 AM

Electropherogram Summary Continued ...



Overall Results for sample 3 : SW15-20 soni

Number of peaks found: 32 Corr. Area 1: 3,807.4
 Noise: 0.3

Peak table for sample 3 : SW15-20 soni

Peak	Size [bp]	Conc. [pg/μl]	Molarity [pmol/l]	Observations	Aligned Migration Time [s]
1	35	125.00	5,411.3	Lower Marker	43.00
2	198	1,080.35	8,248.6		59.40
3	211	95.03	682.2		60.52
4	226	195.83	1,311.1		61.87
5	244	228.19	1,418.9		63.41
6	258	221.14	1,296.6		64.72
7	291	264.42	1,379.1		67.56
8	309	134.91	661.3		69.15
9	321	150.74	711.4		70.12
10	333	97.22	442.4		71.10
11	342	77.89	344.9		71.85
12	356	134.34	571.2		73.01
13	377	151.87	609.7		74.74
14	403	82.29	309.6		76.74
15	431	90.67	318.5		78.37
16	452	143.58	481.6		79.54
17	477	79.54	252.6		80.98
18	498	81.70	248.4		82.19
19	518	76.24	222.8		83.13
20	545	136.49	379.4		84.34
21	584	42.15	109.3		86.11
22	602	63.91	160.8		86.90
23	648	65.45	153.0		88.35
24	770	22.38	44.0		90.91
25	813	20.07	37.4		91.47

Assay Class: High Sensitivity DNA Assay
 Data Path: C:\...ents and Settings\Bioanalyzer\2015-07-17\2015-07-17_001.xad

Created: 7/17/2015 8:45:53 AM
 Modified: 7/17/2015 9:41:14 AM

Electropherogram Summary Continued ...

... Peak table for sample 3 : SW15-20 soni

Peak	Size [bp]	Conc. [pg/μl]	Molarity [pmol/l]	Observations	Aligned Migration Time [s]
26	862	35.79	62.9		92.12
27	961	36.18	57.0		93.43
28	1,216	19.80	24.7		95.43
29	1,417	19.49	20.8		96.83
30	1,640	6.63	6.1		98.37
31	1,842	20.93	17.2		99.76
32	1,983	7.25	5.5		100.74
33	2,524	13.21	7.9		102.75
34	10,380	75.00	10.9	Upper Marker	113.00

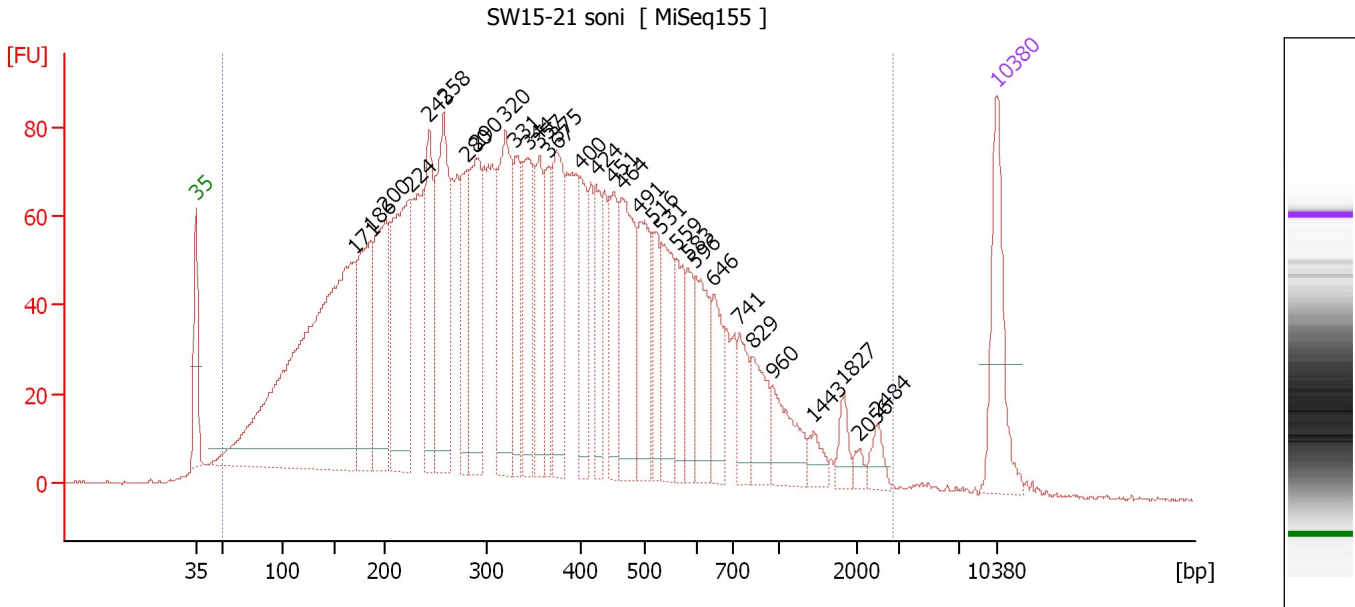
Region table for sample 3 : SW15-20 soni

From [bp]	Average Size [bp]	To [bp]	Corr. Area	Molarity [pmol/l]	Co % of lor Total	Size distribution in CV [%]	Conc. [pg/μl]
46	427	3,550	3,807.4	30,625.7	99	83.1	4,724.95

Assay Class: High Sensitivity DNA Assay
 Data Path: C:\...ents and Settings\Bioanalyzer\2015-07-17\2015-07-17_001.xad

Created: 7/17/2015 8:45:53 AM
 Modified: 7/17/2015 9:41:14 AM

Electropherogram Summary Continued ...



Overall Results for sample 4 : SW15-21 soni

Number of peaks found: 32 Corr. Area 1: 3,899.6
 Noise: 0.2

Peak table for sample 4 : SW15-21 soni

Peak	Size [bp]	Conc. [pg/μl]	Molarity [pmol/l]	Observations	Aligned Migration Time [s]
1	35	125.00	5,411.3	Lower Marker	43.00
2	171	724.39	6,415.6		56.94
3	186	162.16	1,323.8		58.25
4	200	163.62	1,238.8		59.56
5	224	229.29	1,548.5		61.70
6	243	133.73	832.8		63.38
7	258	198.66	1,166.5		64.69
8	280	100.59	544.0		66.64
9	290	137.19	716.4		67.53
10	320	178.11	843.0		70.05
11	331	82.61	378.2		70.93
12	344	116.88	514.7		72.01
13	357	86.98	369.5		73.03
14	367	64.01	263.9		73.92
15	375	128.73	519.5		74.57
16	400	70.01	265.3		76.58
17	424	62.81	224.2		77.98
18	451	76.45	256.7		79.52
19	464	128.77	420.1		80.26
20	491	94.76	292.2		81.80
21	516	52.45	154.1		83.01
22	531	78.58	224.1		83.71
23	559	51.75	140.3		84.97
24	583	40.65	105.7		86.04
25	596	70.19	178.4		86.65

Assay Class: High Sensitivity DNA Assay
 Data Path: C:\...ents and Settings\Bioanalyzer\2015-07-17\2015-07-17_001.xad

Created: 7/17/2015 8:45:53 AM
 Modified: 7/17/2015 9:41:14 AM

Electropherogram Summary Continued ...

... Peak table for sample 4 : SW15-21 soni

Peak	Size [bp]	Conc. [pg/μl]	Molarity [pmol/l]	Observations	Aligned Migration Time [s]
26	646	49.83	116.9		88.28
27	741	38.65	79.0		90.52
28	829	48.30	88.2		91.69
29	960	50.06	79.0		93.41
30	1,443	15.93	16.7		97.00
31	1,827	16.72	13.9		99.66
32	2,056	7.07	5.2		101.06
33	2,484	14.42	8.8		102.60
34	10,380	75.00	10.9	Upper Marker	113.00

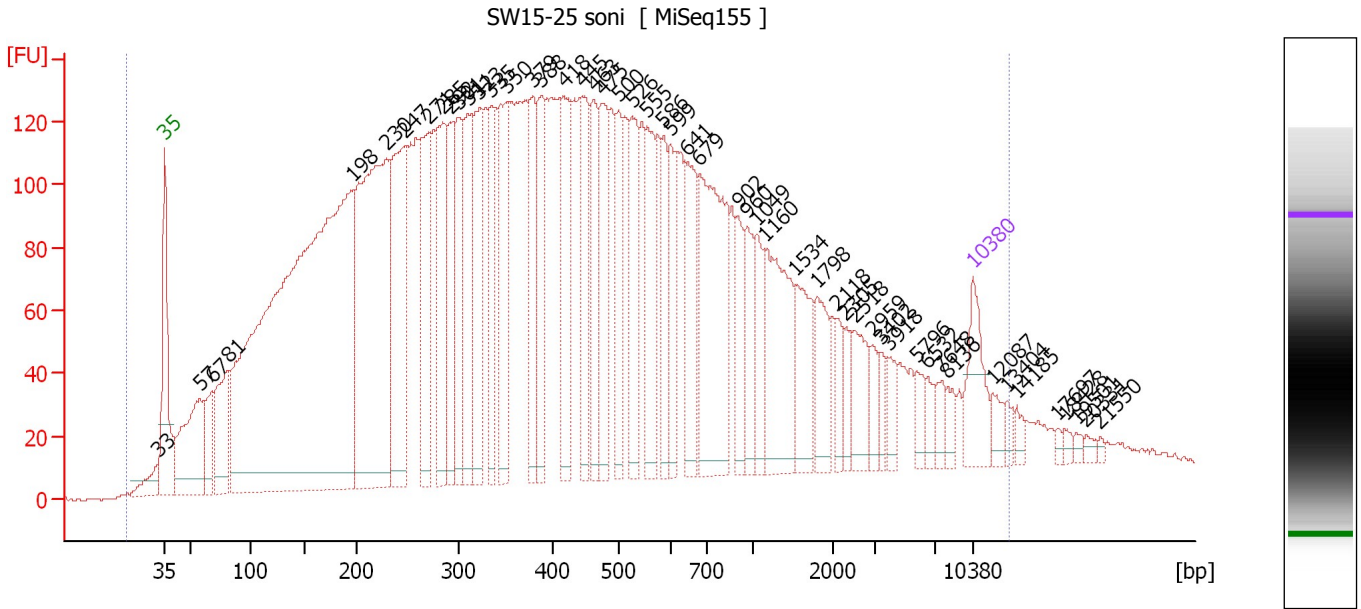
Region table for sample 4 : SW15-21 soni

From [bp]	Average Size [bp]	To [bp]	Corr. Area	Molarity [pmol/l]	Co % of lor Total	Size distribution in CV [%]	Conc. [pg/μl]
50	418	2,878	3,899.6	30,083.1	99	81.2	4,652.30

Assay Class: High Sensitivity DNA Assay
 Data Path: C:\...ents and Settings\Bioanalyzer\2015-07-17\2015-07-17_001.xad

Created: 7/17/2015 8:45:53 AM
 Modified: 7/17/2015 9:41:14 AM

Electropherogram Summary Continued ...



Overall Results for sample 5 : SW15-25 soni

Number of peaks found: 52 Corr. Area 1: 7,647.4
 Noise: 0.7

Peak table for sample 5 : SW15-25 soni

Peak	Size [bp]	Conc. [pg/μl]	Molarity [pmol/l]	Observations	Aligned Migration Time [s]
1	33	0.00	0.0		42.38
2	35	125.00	5,411.3	Lower Marker	43.00
3	57	248.60	6,563.9		46.02
4	67	95.87	2,154.3		47.08
5	81	187.90	3,529.6		48.47
6	198	2,045.26	15,687.1		59.32
7	230	794.10	5,230.5		62.20
8	247	372.63	2,287.3		63.69
9	271	232.22	1,297.2		65.85
10	285	242.78	1,289.2		67.10
11	292	156.35	811.7		67.68
12	301	190.08	956.4		68.49
13	311	187.42	914.5		69.26
14	323	206.67	969.9		70.27
15	335	146.38	661.7		71.28
16	350	207.62	897.7		72.53
17	379	134.54	537.6		74.88
18	388	152.44	595.3		75.60
19	418	174.90	633.9		77.62
20	445	132.81	452.2		79.15
21	463	138.62	453.2		80.21
22	475	163.61	521.6		80.88
23	500	113.32	343.6		82.27
24	526	147.90	426.0		83.47
25	555	144.62	395.1		84.77

Assay Class: High Sensitivity DNA Assay
 Data Path: C:\...ents and Settings\Bioanalyzer\2015-07-17\2015-07-17_001.xad

Created: 7/17/2015 8:45:53 AM
 Modified: 7/17/2015 9:41:14 AM

Electropherogram Summary Continued ...

... Peak table for sample 5 : SW15-25 soni

Peak	Size [bp]	Conc. [pg/µl]	Molarity [pmol/l]	Observations	Aligned Migration Time [s]
26	586	91.69	237.0		86.21
27	599	108.11	273.5		86.79
28	641	140.37	331.7		88.13
29	679	336.48	750.5		89.33
30	902	70.17	117.9		92.64
31	960	69.59	109.8		93.41
32	1,049	72.57	104.8		94.28
33	1,160	189.10	247.0		95.04
34	1,534	93.76	92.6		97.64
35	1,798	72.51	61.1		99.46
36	2,118	32.34	23.1		101.29
37	2,305	26.37	17.3		101.96
38	2,518	62.78	37.8		102.73
39	2,959	25.68	13.1		104.31
40	3,402	21.03	9.4		104.98
41	3,918	25.94	10.0		105.65
42	5,796	26.06	6.8		108.10
43	6,532	20.26	4.7		109.06
44	7,648	21.48	4.3		110.31
45	8,136	18.43	3.4		110.79
46	10,380	75.00	10.9	Upper Marker	113.00
47	12,087	0.00	0.0		114.68
48	13,404	0.00	0.0		115.98
49	14,185	0.00	0.0		116.74
50	17,697	0.00	0.0		120.20
51	18,428	0.00	0.0		120.92
52	19,501	0.00	0.0		121.98
53	20,331	0.00	0.0		122.79
54	21,550	0.00	0.0		123.99

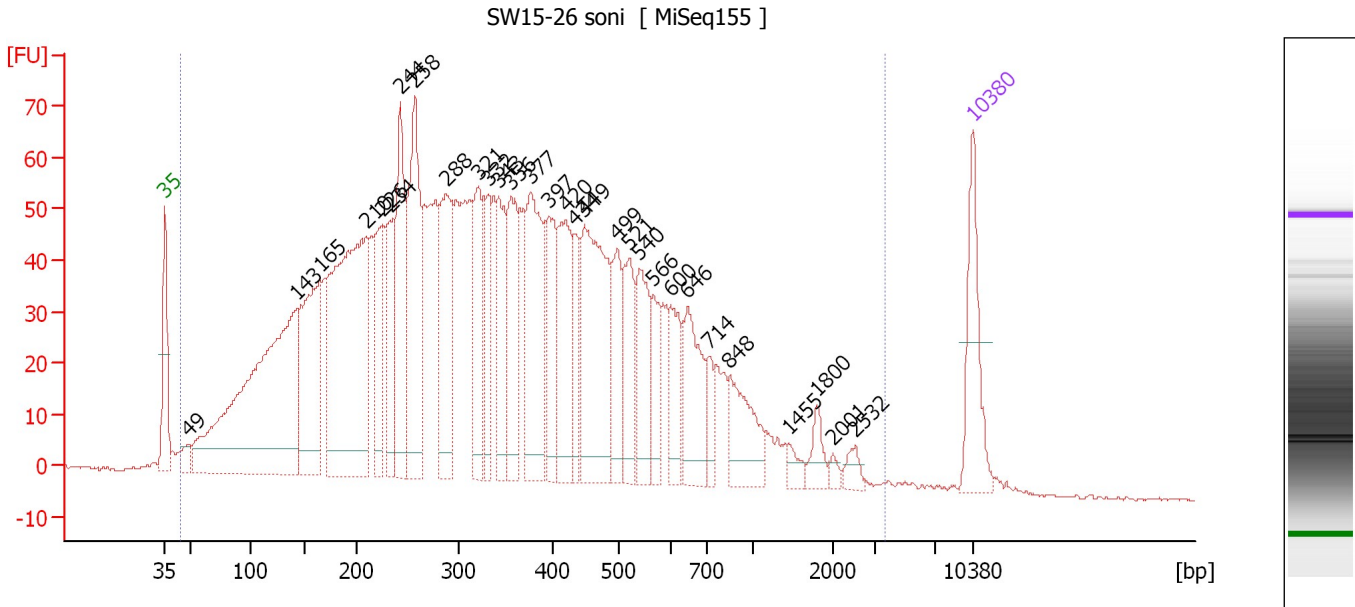
Region table for sample 5 : SW15-25 soni

From [bp]	Average Size [bp]	To [bp]	Corr. Area	Molarity [pmol/l]	Co % of lor Total	Size distribution in CV [%]	Conc. [pg/µl]
13	976	13,544	7,647.4	74,151.2	99	100.0	10,738.62

Assay Class: High Sensitivity DNA Assay
 Data Path: C:\...ents and Settings\Bioanalyzer\2015-07-17\2015-07-17_001.xad

Created: 7/17/2015 8:45:53 AM
 Modified: 7/17/2015 9:41:14 AM

Electropherogram Summary Continued ...



Overall Results for sample 6 : SW15-26 soni

Number of peaks found: 30 Corr. Area 1: 2,866.6
 Noise: 0.4

Peak table for sample 6 : SW15-26 soni

Peak	Size [bp]	Conc. [pg/μl]	Molarity [pmol/l]	Observations	Aligned Migration Time [s]
1	35	125.00	5,411.3	Lower Marker	43.00
2	49	20.74	645.1		45.05
3	143	629.33	6,689.2		54.37
4	165	247.19	2,265.4		56.43
5	210	480.03	3,461.6		60.44
6	226	102.92	690.7		61.83
7	234	104.24	675.4		62.54
8	244	166.26	1,034.3		63.40
9	258	248.04	1,455.9		64.69
10	288	172.76	907.8		67.37
11	321	112.95	532.7		70.14
12	332	84.58	386.3		71.00
13	343	97.56	431.1		71.91
14	356	123.05	524.1		72.96
15	377	183.90	738.5		74.73
16	397	91.20	348.4		76.30
17	420	128.83	464.5		77.74
18	434	57.09	199.5		78.50
19	449	230.84	779.6		79.36
20	499	76.38	232.0		82.23
21	521	85.09	247.6		83.23
22	540	87.63	246.0		84.09
23	566	50.84	136.1		85.29
24	600	55.22	139.5		86.82
25	646	95.24	223.2		88.30

Assay Class: High Sensitivity DNA Assay
 Data Path: C:\...ents and Settings\Bioanalyzer\2015-07-17\2015-07-17_001.xad

Created: 7/17/2015 8:45:53 AM
 Modified: 7/17/2015 9:41:14 AM

Electropherogram Summary Continued ...

... Peak table for sample 6 : SW15-26 soni

Peak	Size [bp]	Conc. [pg/μl]	Molarity [pmol/l]	Observations	Aligned Migration Time [s]
26	714	25.74	54.7		90.16
27	848	75.08	134.2		91.93
28	1,455	12.11	12.6		97.09
29	1,800	20.56	17.3		99.48
30	2,001	6.57	5.0		100.86
31	2,532	12.07	7.2		102.77
32	10,380	75.00	10.9	Upper Marker	113.00

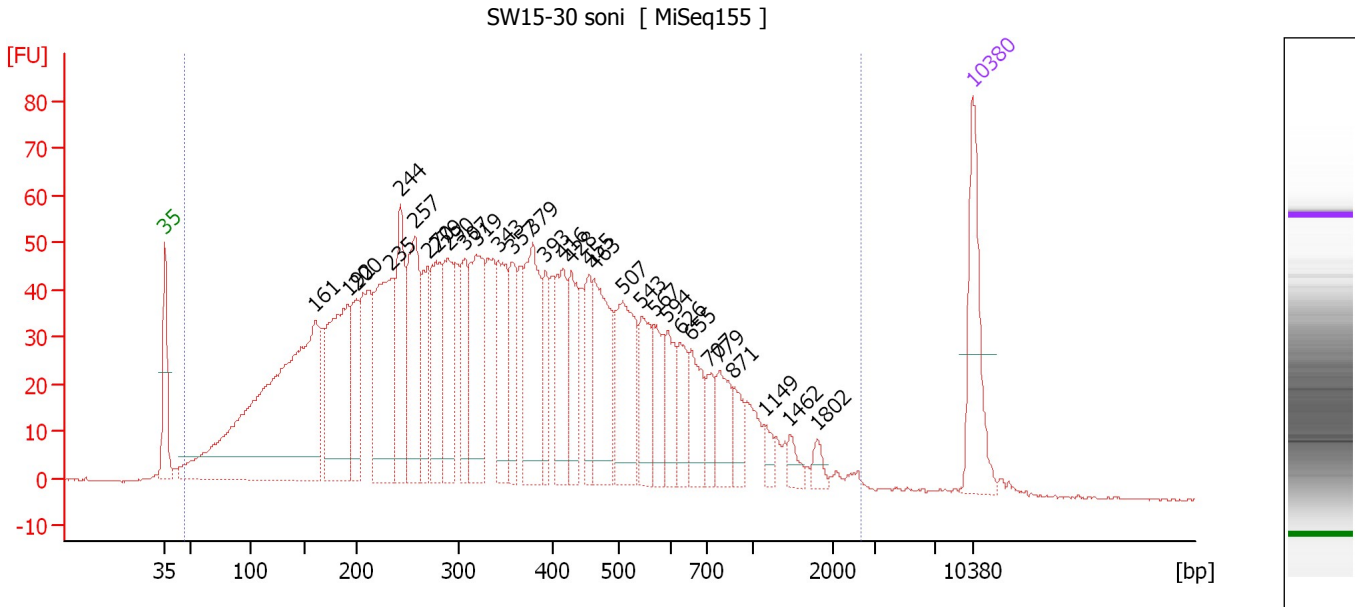
Region table for sample 6 : SW15-26 soni

From [bp]	Average Size [bp]	To [bp]	Corr. Area	Molarity [pmol/l]	Co % of lor Total	Size distribution in CV [%]	Conc. [pg/μl]
44	409	3,652	2,866.6	31,909.3	99	81.4	4,831.80

Assay Class: High Sensitivity DNA Assay
 Data Path: C:\...ents and Settings\Bioanalyzer\2015-07-17\2015-07-17_001.xad

Created: 7/17/2015 8:45:53 AM
 Modified: 7/17/2015 9:41:14 AM

Electropherogram Summary Continued ...



Overall Results for sample 7 : SW15-30 soni

Number of peaks found: 31 Corr. Area 1: 2,539.4
 Noise: 0.2

Peak table for sample 7 : SW15-30 soni

Peak	Size [bp]	Conc. [pg/μl]	Molarity [pmol/l]	Observations	Aligned Migration Time [s]
1	35	125.00	5,411.3	Lower Marker	43.00
2	161	612.10	5,764.0		56.03
3	192	209.68	1,650.8		58.87
4	200	78.97	596.9		59.59
5	235	203.68	1,315.1		62.62
6	244	116.75	725.3		63.43
7	257	146.11	859.8		64.63
8	270	68.20	382.0		65.79
9	279	98.33	534.7		66.51
10	290	106.47	556.2		67.52
11	307	69.41	342.7		68.96
12	319	136.89	649.8		69.97
13	343	93.00	411.2		71.89
14	357	61.07	258.9		73.10
15	379	133.50	533.5		74.88
16	393	46.53	179.6		75.98
17	416	77.03	280.3		77.52
18	428	63.98	226.4		78.19
19	455	49.65	165.3		79.73
20	463	112.32	367.8		80.16
21	507	111.05	331.8		82.62
22	543	62.40	174.1		84.25
23	567	45.98	122.8		85.36
24	594	39.95	101.9		86.56
25	626	35.96	87.0		87.66

Assay Class: High Sensitivity DNA Assay
 Data Path: C:\...ents and Settings\Bioanalyzer\2015-07-17\2015-07-17_001.xad

Created: 7/17/2015 8:45:53 AM
 Modified: 7/17/2015 9:41:14 AM

Electropherogram Summary Continued ...

... Peak table for sample 7 : SW15-30 soni

Peak	Size [bp]	Conc. [pg/μl]	Molarity [pmol/l]	Observations	Aligned Migration Time [s]
26	655	48.45	112.0		88.58
27	707	25.63	55.0		90.07
28	779	42.32	82.3		91.03
29	871	25.20	43.9		92.23
30	1,149	11.26	14.8		94.97
31	1,462	12.54	13.0		97.13
32	1,802	9.95	8.4		99.49
33	10,380	75.00	10.9	Upper Marker	113.00

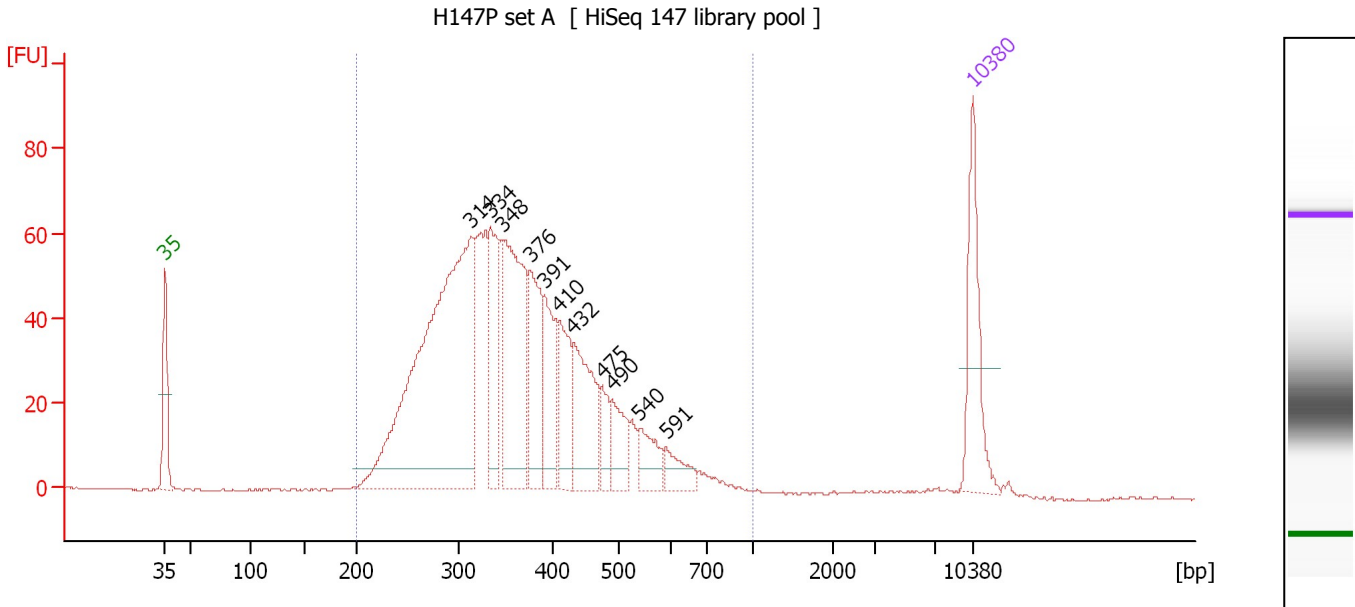
Region table for sample 7 : SW15-30 soni

From [bp]	Average Size [bp]	To [bp]	Corr. Area	Molarity [pmol/l]	Co % of lor Total	Size distribution in CV [%]	Conc. [pg/μl]
46	414	2,695	2,539.4	23,436.5	99	75.0	3,614.18

Assay Class: High Sensitivity DNA Assay
 Data Path: C:\...ents and Settings\Bioanalyzer\2015-07-17\2015-07-17_001.xad

Created: 7/17/2015 8:45:53 AM
 Modified: 7/17/2015 9:41:14 AM

Electropherogram Summary Continued ...



Overall Results for sample 8 : H147P set A

Number of peaks found: 11 Corr. Area 1: 1,311.6
 Noise: 0.2

Peak table for sample 8 : H147P set A

Peak	Size [bp]	Conc. [pg/μl]	Molarity [pmol/l]	Observations	Aligned Migration Time [s]
1	35	125.00	5,411.3	Lower Marker	43.00
2	314	589.60	2,842.7		69.57
3	334	106.94	484.8		71.20
4	348	213.42	929.9		72.31
5	376	102.93	414.9		74.61
6	391	79.64	308.5		75.86
7	410	67.46	249.3		77.16
8	432	110.10	386.2		78.41
9	475	29.76	95.0		80.86
10	490	43.98	136.0		81.72
11	540	35.51	99.6		84.13
12	591	25.79	66.1		86.43
13	10,380	75.00	10.9	Upper Marker	113.00

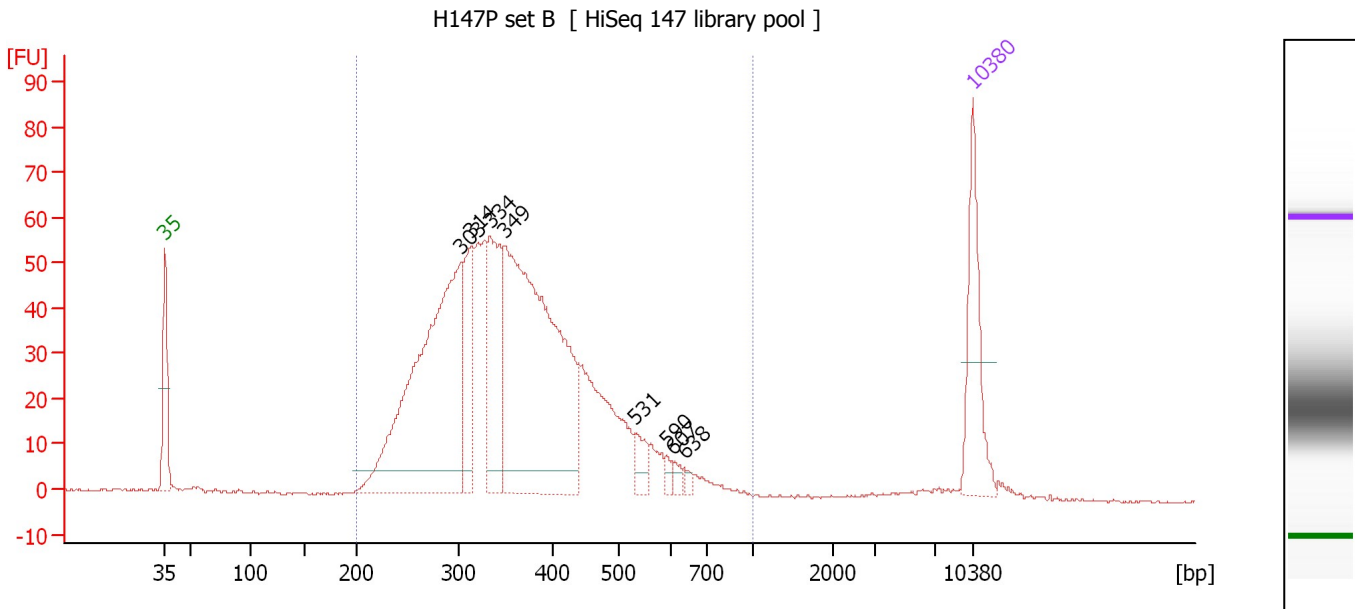
Region table for sample 8 : H147P set A

From [bp]	Average Size [bp]	To [bp]	Corr. Area	Molarity [pmol/l]	Co % of Ior Total	Size distribution in CV [%]	Conc. [pg/μl]
200	371	1,000	1,311.6	7,533.8	98	27.0	1,695.40

Assay Class: High Sensitivity DNA Assay
 Data Path: C:\...ents and Settings\Bioanalyzer\2015-07-17\2015-07-17_001.xad

Created: 7/17/2015 8:45:53 AM
 Modified: 7/17/2015 9:41:14 AM

Electropherogram Summary Continued ...



Overall Results for sample 9 : H147P set B

Number of peaks found: 8 Corr. Area 1: 1,183.2
 Noise: 0.3

Peak table for sample 9 : H147P set B

Peak	Size [bp]	Conc. [pg/μl]	Molarity [pmol/l]	Observations	Aligned Migration Time [s]
1	35	125.00	5,411.3	Lower Marker	43.00
2	303	463.11	2,315.9		68.65
3	314	96.12	463.6		69.56
4	334	135.62	615.2		71.18
5	349	509.63	2,215.0		72.38
6	531	21.60	61.6		83.72
7	590	6.74	17.3		86.40
8	607	7.66	19.1		87.07
9	638	5.07	12.0		88.02
10	10,380	75.00	10.9	Upper Marker	113.00

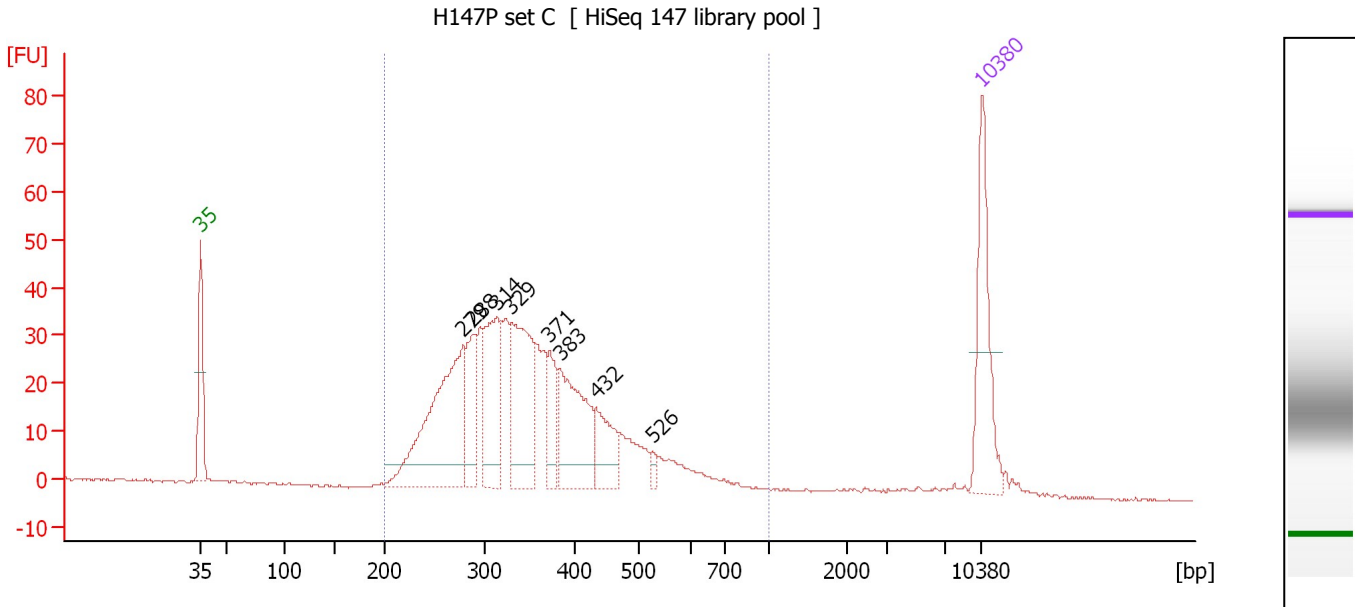
Region table for sample 9 : H147P set B

From [bp]	Average Size [bp]	To [bp]	Corr. Area	Molarity [pmol/l]	Co % of Ior Total	Size distribution in CV [%]	Conc. [pg/μl]
200	368	1,000	1,183.2	7,015.1	98	26.3	1,572.21

Assay Class: High Sensitivity DNA Assay
 Data Path: C:\...ents and Settings\Bioanalyzer\2015-07-17\2015-07-17_001.xad

Created: 7/17/2015 8:45:53 AM
 Modified: 7/17/2015 9:41:14 AM

Electropherogram Summary Continued ...



Overall Results for sample 10 : H147P set C

Number of peaks found: 8 Corr. Area 1: 739.6
 Noise: 0.3

Peak table for sample 10 : H147P set C

Peak	Size [bp]	Conc. [pg/μl]	Molarity [pmol/l]	Observations	Aligned Migration Time [s]
1	35	125.00	5,411.3	Lower Marker	43.00
2	279	221.05	1,202.1		66.51
3	288	66.37	348.8		67.37
4	314	112.52	543.5		69.52
5	329	139.28	640.6		70.81
6	371	42.51	173.4		74.25
7	383	113.05	447.7		75.16
8	432	46.57	163.4		78.41
9	526	6.58	19.0		83.47
10	10,380	75.00	10.9	Upper Marker	113.00

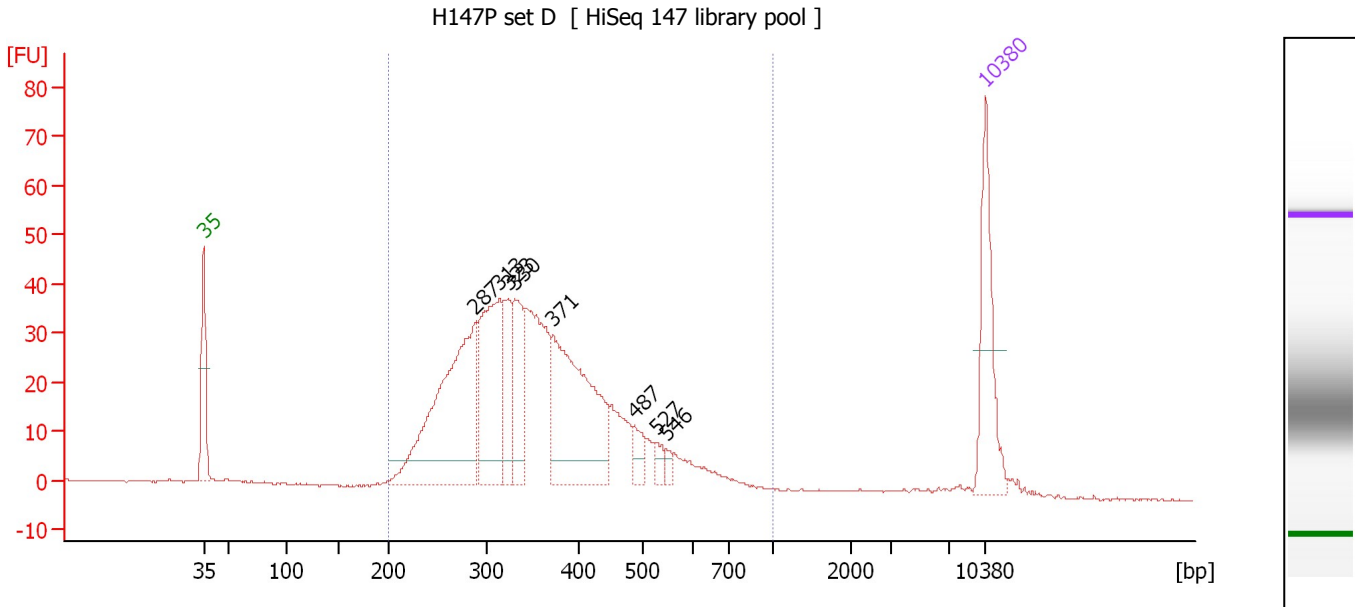
Region table for sample 10 : H147P set C

From [bp]	Average Size [bp]	To [bp]	Corr. Area	Molarity [pmol/l]	Co % of Ior Total	Size distribution in CV [%]	Conc. [pg/μl]
200	360	1,000	739.6	4,578.8	96	27.7	998.76

Assay Class: High Sensitivity DNA Assay
 Data Path: C:\...ents and Settings\Bioanalyzer\2015-07-17\2015-07-17_001.xad

Created: 7/17/2015 8:45:53 AM
 Modified: 7/17/2015 9:41:14 AM

Electropherogram Summary Continued ...



Overall Results for sample 11 : H147P set D

Number of peaks found: 8 Corr. Area 1: 825.8
 Noise: 0.2

Peak table for sample 11 : H147P set D

Peak	Size [bp]	Conc. [pg/μl]	Molarity [pmol/l]	Observations	Aligned Migration Time [s]
1	35	125.00	5,411.3	Lower Marker	43.00
2	287	294.65	1,553.3		67.29
3	313	163.77	792.2		69.48
4	323	63.04	295.6		70.29
5	330	75.40	346.1		70.87
6	371	219.76	897.6		74.21
7	487	19.05	59.3		81.55
8	527	10.29	29.6		83.51
9	546	6.74	18.7		84.37
10	10,380	75.00	10.9	Upper Marker	113.00

Region table for sample 11 : H147P set D

From [bp]	Average Size [bp]	To [bp]	Corr. Area	Molarity [pmol/l]	Co % of Ior Total	Size distribution in CV [%]	Conc. [pg/μl]
200	365	1,000	825.8	5,351.5	96	28.2	1,179.54

Assay Class: High Sensitivity DNA Assay
Data Path: C:\...ents and Settings\Bioanalyzer\2015-07-17\2015-07-17_001.xad

Created: 7/17/2015 8:45:53 AM
Modified: 7/17/2015 9:41:14 AM

Gel Image

