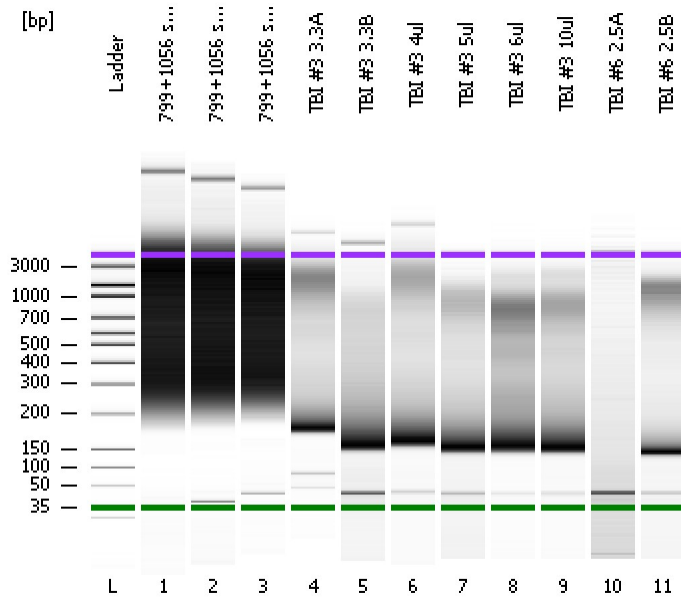


Assay Class: High Sensitivity DNA Assay
Data Path: C:\...ents and Settings\Bioanalyzer\2015-07-17\2015-07-17_003.xad

Created: 7/17/2015 4:35:24 PM
Modified: 7/17/2015 5:16:42 PM

Electrophoresis File Run Summary



Instrument Information:

Instrument Name: DE13701086 Firmware: C.01.069
Serial#: DE13701086 Type: G2938B

Assay Information:

Assay Origin Path: C:\Program Files\Agilent\2100 bioanalyzer\2100 expert\assays\dsDNA\High Sensitivity DNA.xsy
Assay Class: High Sensitivity DNA Assay
Version: 1.03
Assay Comments: Copyright © 2003-2010 Agilent Technologies

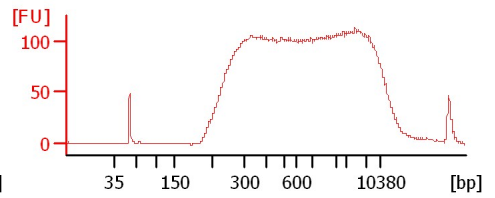
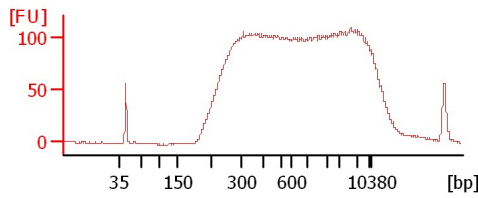
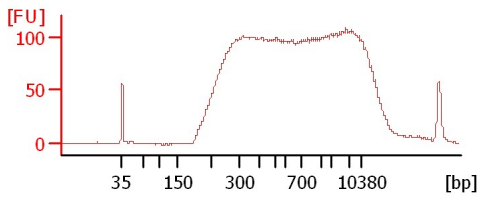
Chip Information:

Chip Lot #:
Reagent Kit Lot #:
Chip Comments:

799+1056 sc enhancer C1 1/3

799+1056 sc enhancer C1 2/3

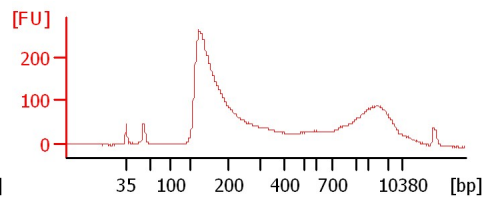
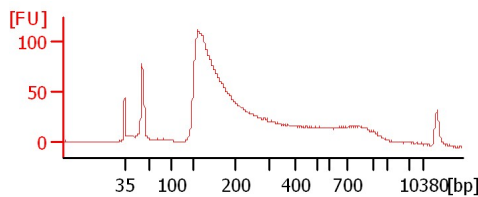
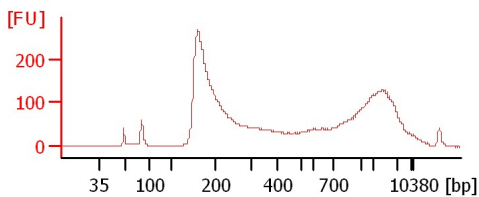
799+1056 sc enhancer C1 3/3



TBI #3 3.3A

TBI #3 3.3B

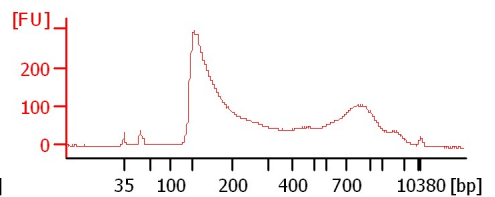
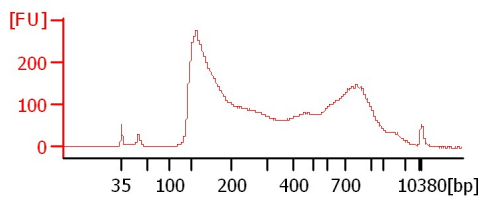
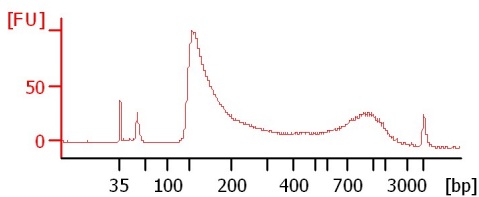
TBI #3 4ul



TBI #3 5ul

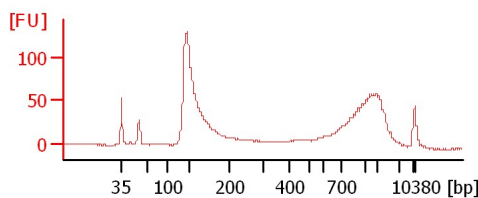
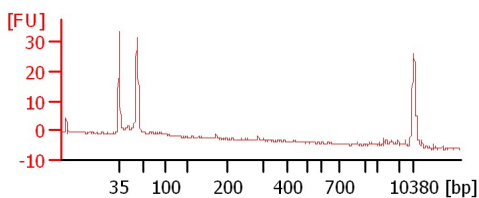
TBI #3 6ul

TBI #3 10ul



TBI #6 2.5A

TBI #6 2.5B



Assay Class: High Sensitivity DNA Assay
Data Path: C:\...ents and Settings\Bioanalyzer\2015-07-17\2015-07-17_003.xad

Created: 7/17/2015 4:35:24 PM
Modified: 7/17/2015 5:16:42 PM

Electrophoresis File Run Summary (Chip Summary)

Sample Name	Sample Comment	Rest. Digest	Status	Observation	Result Label	Result Color
799+1056 sc enhancer C1 1/3		<input type="checkbox"/>	✓			
799+1056 sc enhancer C1 2/3		<input type="checkbox"/>	✓			
799+1056 sc enhancer C1 3/3		<input type="checkbox"/>	✓			
TBI #3 3.3A		<input type="checkbox"/>	✓			
TBI #3 3.3B		<input type="checkbox"/>	✓			
TBI #3 4ul		<input type="checkbox"/>	✓			
TBI #3 5ul		<input type="checkbox"/>	✓			
TBI #3 6ul		<input type="checkbox"/>	✓			
TBI #3 10ul		<input type="checkbox"/>	✓			
TBI #6 2.5A		<input type="checkbox"/>	✓			
TBI #6 2.5B		<input type="checkbox"/>	✓			
Ladder		<input type="checkbox"/>	✓			

Chip Lot #

Reagent Kit Lot #

Chip Comments :

Assay Class: High Sensitivity DNA Assay
Data Path: C:\...ents and Settings\Bioanalyzer\2015-07-17\2015-07-17_003.xad

Created: 7/17/2015 4:35:24 PM
Modified: 7/17/2015 5:16:42 PM

Electrophoresis Assay Details

General Analysis Settings

Number of Available Sample and Ladder Wells (Max.) : 12
Minimum Visible Range [s] : 32
Maximum Visible Range [s] : 138
Start Analysis Time Range [s] : 33
End Analysis Time Range [s] : 137.5
Ladder Concentration [pg/μl] : 1950
Uses Standard Area for Ladder Fragments
Lower Marker Concentration [pg/μl] : 125
Upper Marker Concentration [pg/μl] : 75
Used Upper Marker for Quantitation
Standard Curve Fit is Point to Point
Show Data Aligned to Lower and Upper Marker

Integrator Settings

Integration Start Time [s] : 33.05
Integration End Time [s] : 137
Slope Threshold : 0.8
Height Threshold [FU] : 5
Area Threshold : 0.1
Width Threshold [s] : 0.6
Baseline Plateau [s] : 0.5

Filter Settings

Filter Width [s] : 0.5
Polynomial Order : 4

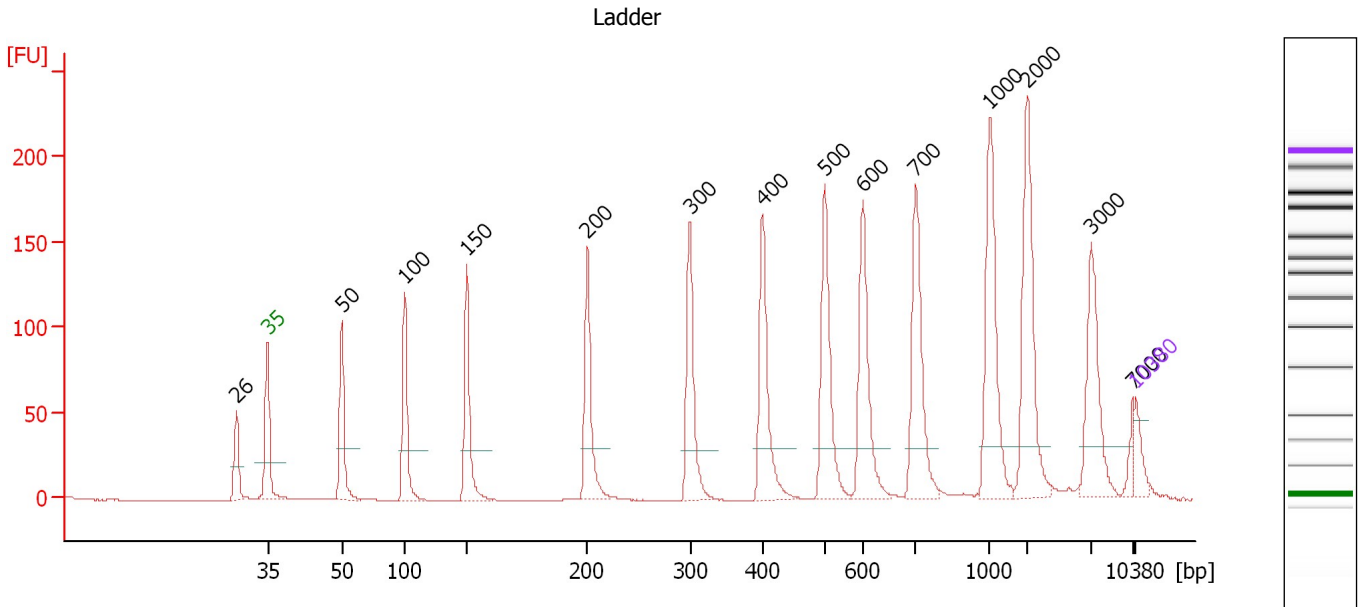
Ladder

Ladder Peak	Size	Area
1	35	160
2	50	210
3	100	208
4	150	221
5	200	242
6	300	270
7	400	305
8	500	306
9	600	336
10	700	321
11	1000	366
12	2000	413
13	3000	411
14	7000	400
15	10380	214

Assay Class: High Sensitivity DNA Assay
 Data Path: C:\...ents and Settings\Bioanalyzer\2015-07-17\2015-07-17_003.xad

Created: 7/17/2015 4:35:24 PM
 Modified: 7/17/2015 5:16:42 PM

Electropherogram Summary



Overall Results for Ladder

Noise: 0.2

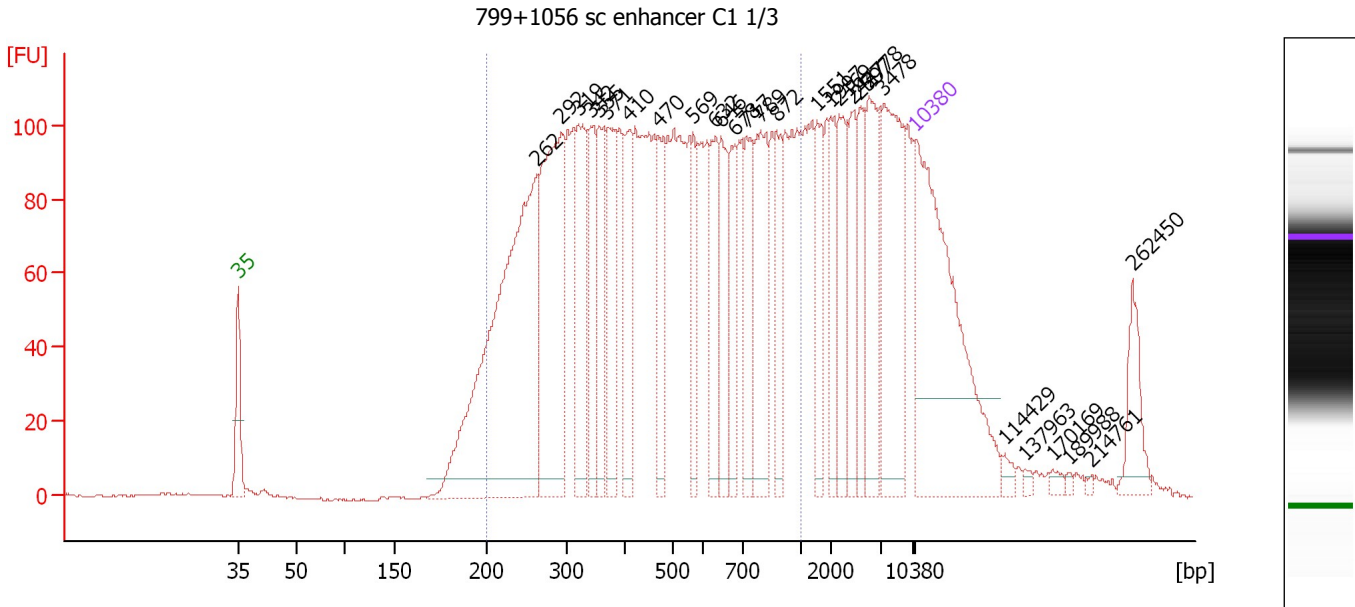
Peak table for Ladder

Peak	Size [bp]	Conc. [pg/μl]	Molarity [pmol/l]	Observations	Aligned Migration Time [s]
1	26	0.00	0.0		40.51
2	35	125.00	5,411.3	Lower Marker	43.00
3	50	150.00	4,545.5	Ladder Peak	48.97
4	100	150.00	2,272.7	Ladder Peak	54.04
5	150	150.00	1,515.2	Ladder Peak	59.07
6	200	150.00	1,136.4	Ladder Peak	68.78
7	300	150.00	757.6	Ladder Peak	77.03
8	400	150.00	568.2	Ladder Peak	82.88
9	500	150.00	454.5	Ladder Peak	87.90
10	600	150.00	378.8	Ladder Peak	90.96
11	700	150.00	324.7	Ladder Peak	95.25
12	1,000	150.00	227.3	Ladder Peak	101.23
13	2,000	150.00	113.6	Ladder Peak	104.19
14	3,000	150.00	75.8	Ladder Peak	109.35
15	7,000	150.00	32.5	Ladder Peak	112.70
16	10,380	75.00	10.9	Upper Marker	113.00

Assay Class: High Sensitivity DNA Assay
 Data Path: C:\...ents and Settings\Bioanalyzer\2015-07-17\2015-07-17_003.xad

Created: 7/17/2015 4:35:24 PM
 Modified: 7/17/2015 5:16:42 PM

Electropherogram Summary Continued ...



Overall Results for sample 1 : 799+1056 sc enhancer C1 1/3

Number of peaks found: 28 Corr. Area 1: 3,137.2
 Noise: 0.3

Peak table for sample 1 : 799+1056 sc enhancer C1 1/3

Peak	Size [bp]	Conc. [pg/μl]	Molarity [pmol/l]	Observations	Aligned Migration Time [s]
1	35	125.00	5,411.3	Lower Marker	43.00
2	262	180.81	1,047.2		73.87
3	292	92.90	481.5		76.40
4	319	40.19	190.7		78.17
5	342	29.26	129.6		79.49
6	355	28.59	121.9		80.26
7	371	31.14	127.1		81.20
8	410	27.52	101.6		83.40
9	470	21.55	69.5		86.38
10	569	17.89	47.6		90.02
11	632	22.54	54.0		92.33
12	646	23.56	55.3		92.94
13	678	22.14	49.5		94.31
14	717	25.05	53.0		95.58
15	789	35.59	68.4		97.02
16	872	18.20	31.6		98.67
17	1,551	16.94	16.5		102.86
18	1,997	13.14	10.0		104.18
19	2,169	21.07	14.7		105.06
20	2,447	17.00	10.5		106.50
21	2,597	16.13	9.4		107.27
22	2,778	27.44	15.0		108.20
23	3,478	44.14	19.2		109.75
24	10,380	75.00	10.9	Upper Marker	113.00
25	114,429	0.00	0.0		122.26

Assay Class: High Sensitivity DNA Assay
 Data Path: C:\...ents and Settings\Bioanalyzer\2015-07-17\2015-07-17_003.xad

Created: 7/17/2015 4:35:24 PM
 Modified: 7/17/2015 5:16:42 PM

Electropherogram Summary Continued ...

... Peak table for sample 1 : 799+1056 sc enhancer C1 1/3

Peak	Size [bp]	Conc. [pg/μl]	Molarity [pmol/l]	Observations	Aligned Migration Time [s]
26	137,963	0.00	0.0		124.35
27	170,169	0.00	0.0		127.22
28	189,988	0.00	0.0		128.98
29	214,761	0.00	0.0		131.19
30	262,450	0.00	0.0		135.43

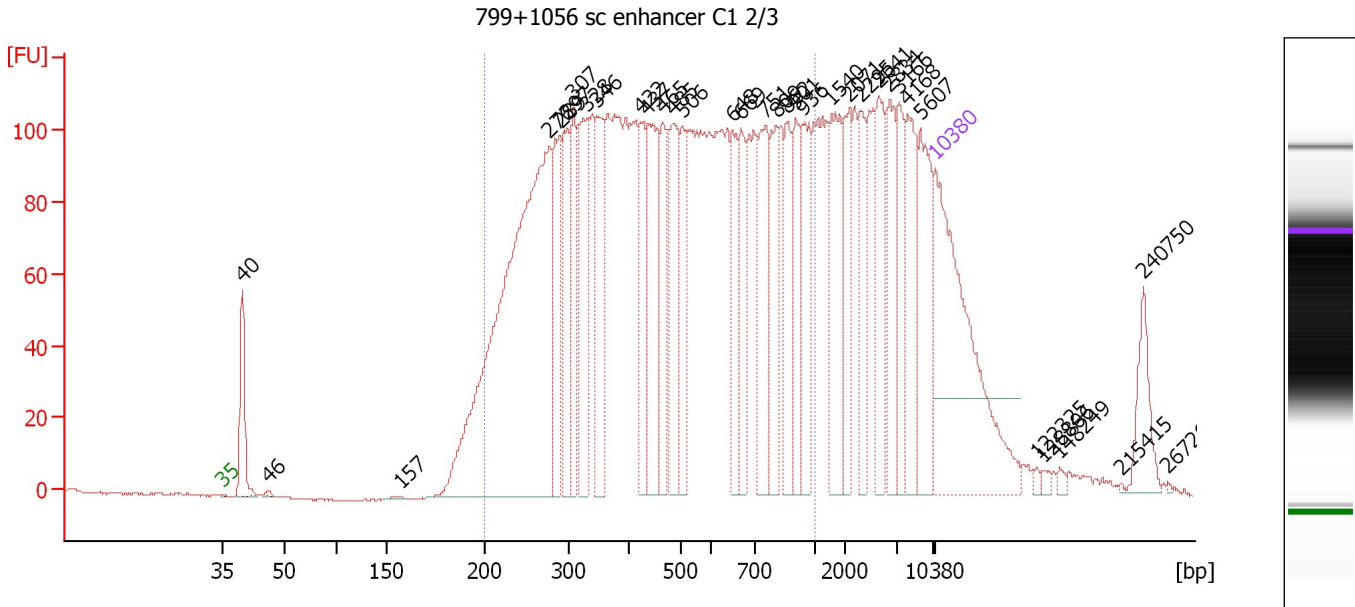
Region table for sample 1 : 799+1056 sc enhancer C1 1/3

From [bp]	Average Size [bp]	To [bp]	Corr. Area	Molarity [pmol/l]	Co % of lor Total	Size distribution in CV [%]	Conc. [pg/μl]
200	504	1,000	3,137.2	3,465.8	71	42.8	893.23

Assay Class: High Sensitivity DNA Assay
 Data Path: C:\...ents and Settings\Bioanalyzer\2015-07-17\2015-07-17_003.xad

Created: 7/17/2015 4:35:24 PM
 Modified: 7/17/2015 5:16:42 PM

Electropherogram Summary Continued ...



Setpoint Deviations for sample 2 : 799+1056 sc enhancer C1 2/3

Height Threshold [FU] : 0

Overall Results for sample 2 : 799+1056 sc enhancer C1 2/3

Number of peaks found: 35 Corr. Area 1: 3,361.2
 Noise: 0.3

Peak table for sample 2 : 799+1056 sc enhancer C1 2/3

Pea k	Size [bp]	Conc. [pg/μl]	Molarity [pmol/l]	Observations	Aligned Migration Time [s]
1	35	125.00	5,411.3	Lower Marker	43.00
2	40	30.84	1,175.7		44.89
3	46	0.77	25.2		47.46
4	157	0.75	7.3		60.36
5	276	267.22	1,464.6		75.09
6	289	42.14	221.3		76.09
7	297	39.94	203.5		76.82
8	307	32.79	161.8		77.45
9	328	50.77	234.7		78.66
10	346	42.47	186.1		79.70
11	422	26.89	96.4		84.00
12	437	46.86	162.5		84.74
13	465	30.00	97.7		86.15
14	485	37.54	117.3		87.15
15	506	28.94	86.6		88.09
16	648	25.39	59.4		93.02
17	669	25.37	57.5		93.91
18	751	36.42	73.5		96.27
19	809	27.17	50.9		97.43
20	862	24.91	43.8		98.48
21	901	27.53	46.3		99.26
22	936	26.89	43.5		99.94

Assay Class: High Sensitivity DNA Assay
 Data Path: C:\...ents and Settings\Bioanalyzer\2015-07-17\2015-07-17_003.xad

Created: 7/17/2015 4:35:24 PM
 Modified: 7/17/2015 5:16:42 PM

Electropherogram Summary Continued ...

... Peak table for sample 2 : 799+1056 sc enhancer C1 2/3

Peak	Size [bp]	Conc. [pg/μl]	Molarity [pmol/l]	Observations	Aligned Migration Time [s]
23	1,540	33.81	33.3		102.83
24	2,071	22.93	16.8		104.56
25	2,295	18.92	12.5		105.71
26	2,641	24.31	13.9		107.49
27	2,834	23.86	12.8		108.49
28	3,166	21.00	10.0		109.49
29	4,168	26.22	9.5		110.33
30	5,607	32.18	8.7		111.53
31	10,380	75.00	10.9	Upper Marker	113.00
32	122,325	0.00	0.0		122.96
33	128,806	0.00	0.0		123.54
34	148,249	0.00	0.0		125.27
35	215,415	0.00	0.0		131.25
36	240,750	0.00	0.0		133.50
37	267,263	0.00	0.0		135.86

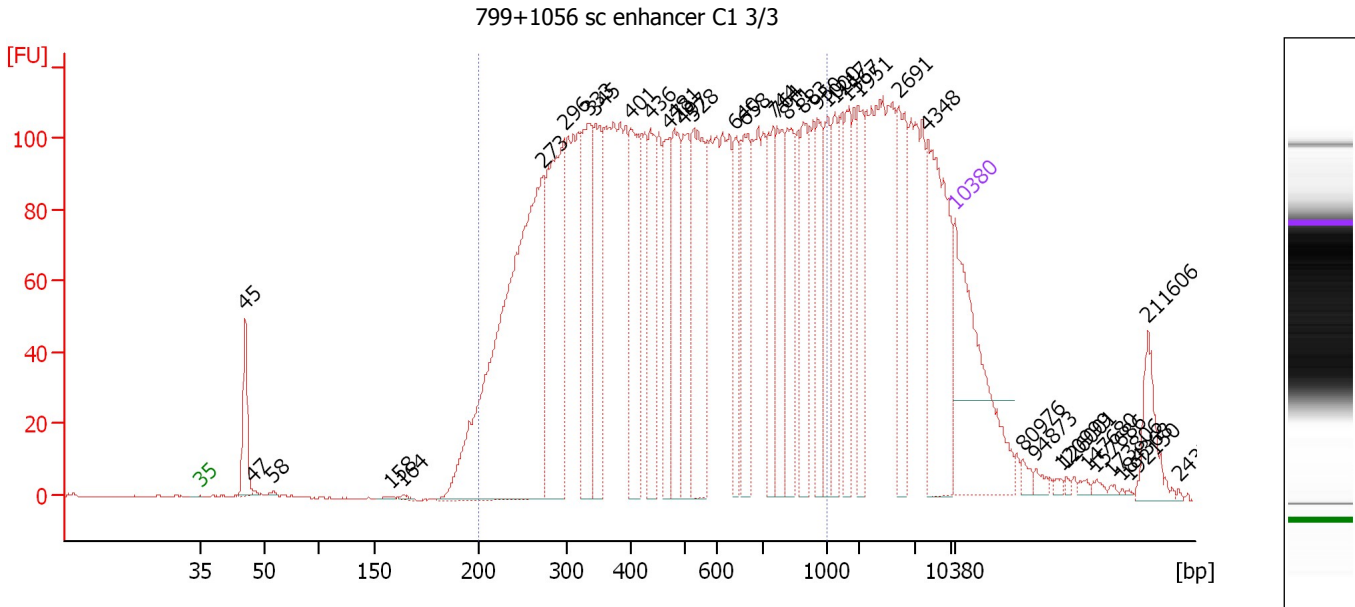
Region table for sample 2 : 799+1056 sc enhancer C1 2/3

From [bp]	Average Size [bp]	To [bp]	Corr. Area	Molarity [pmol/l]	Co % of Ior Total	Size distribution in CV [%]	Conc. [pg/μl]
200	506	1,000	3,361.2	4,564.0	72	42.4	1,185.08

Assay Class: High Sensitivity DNA Assay
 Data Path: C:\...ents and Settings\Bioanalyzer\2015-07-17\2015-07-17_003.xad

Created: 7/17/2015 4:35:24 PM
 Modified: 7/17/2015 5:16:42 PM

Electropherogram Summary Continued ...



Setpoint Deviations for sample 3 : 799+1056 sc enhancer C1 3/3

Height Threshold [FU] : 0

Overall Results for sample 3 : 799+1056 sc enhancer C1 3/3

Number of peaks found: 39 Corr. Area 1: 3,459.4
 Noise: 0.3

Peak table for sample 3 : 799+1056 sc enhancer C1 3/3

Pea k	Size [bp]	Conc. [pg/μl]	Molarity [pmol/l]	Observations	Aligned Migration Time [s]
1	35	125.00	5,411.3	Lower Marker	43.00
2	45	39.32	1,311.1		47.16
3	47	0.91	29.1		47.90
4	58	0.82	21.5		49.78
5	158	1.21	11.6		60.56
6	164	1.36	12.6		61.80
7	273	345.26	1,915.9		74.81
8	296	144.11	736.6		76.74
9	333	82.26	374.2		78.96
10	345	65.82	289.1		79.66
11	401	74.54	281.7		82.92
12	436	50.54	175.5		84.70
13	473	42.45	136.1		86.53
14	481	61.21	193.0		86.93
15	497	51.38	156.5		87.77
16	528	92.81	266.3		88.76
17	640	34.10	80.8		92.67
18	658	52.76	121.4		93.46
19	744	44.22	90.0		96.13
20	764	41.30	81.9		96.53
21	811	47.51	88.7		97.47
22	883	45.75	78.5		98.90

Assay Class: High Sensitivity DNA Assay
 Data Path: C:\...ents and Settings\Bioanalyzer\2015-07-17\2015-07-17_003.xad

Created: 7/17/2015 4:35:24 PM
 Modified: 7/17/2015 5:16:42 PM

Electropherogram Summary Continued ...

... Peak table for sample 3 : 799+1056 sc enhancer C1 3/3

Peak	Size [bp]	Conc. [pg/μl]	Molarity [pmol/l]	Observations	Aligned Migration Time [s]
23	950	32.72	52.2		100.24
24	1,000	34.03	51.6		101.23
25	1,217	28.83	35.9		101.87
26	1,567	29.85	28.9		102.91
27	1,951	32.47	25.2		104.05
28	2,691	42.45	23.9		107.76
29	4,348	80.05	27.9		110.48
30	10,380	75.00	10.9	Upper Marker	113.00
31	80,976	0.00	0.0		119.28
32	94,873	0.00	0.0		120.52
33	120,999	0.00	0.0		122.84
34	126,001	0.00	0.0		123.29
35	147,680	0.00	0.0		125.22
36	157,686	0.00	0.0		126.11
37	173,806	0.00	0.0		127.54
38	184,368	0.00	0.0		128.48
39	192,150	0.00	0.0		129.18
40	211,606	0.00	0.0		130.91
41	243,290	0.00	0.0		133.73

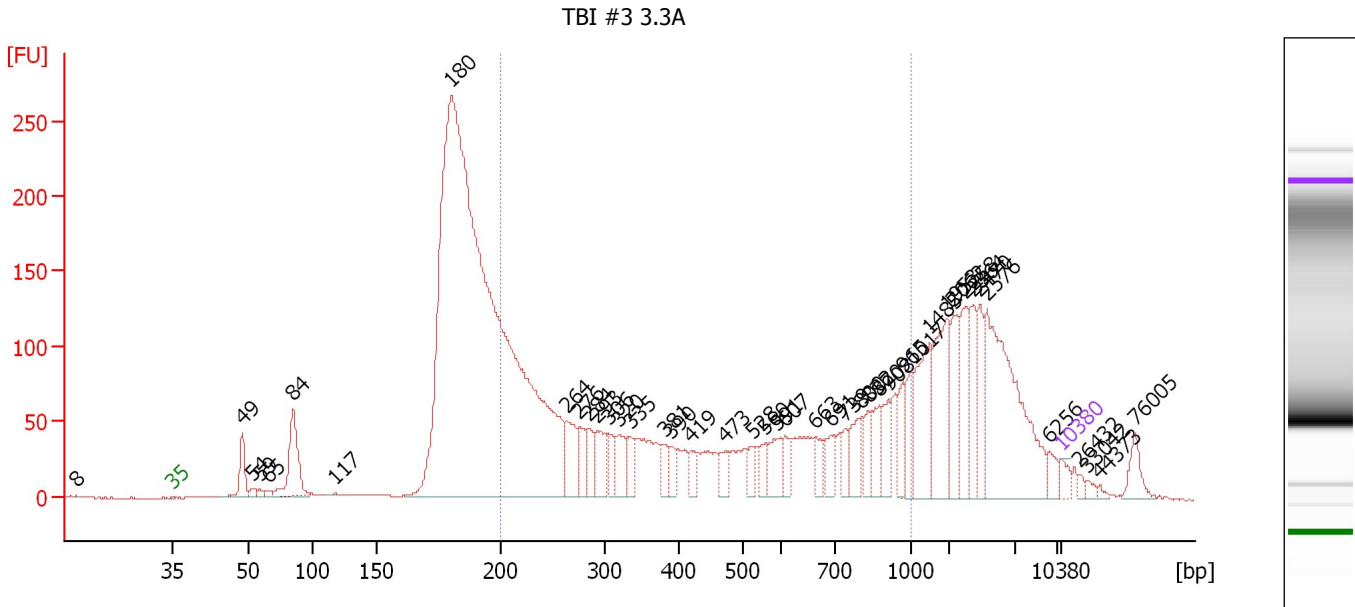
Region table for sample 3 : 799+1056 sc enhancer C1 3/3

From [bp]	Average Size [bp]	To [bp]	Corr. Area	Molarity [pmol/l]	Co % of lor Total	Size distribution in CV [%]	Conc. [pg/μl]
200	514	1,000	3,459.4	7,157.7	73	41.7	1,893.01

Assay Class: High Sensitivity DNA Assay
 Data Path: C:\...ents and Settings\Bioanalyzer\2015-07-17\2015-07-17_003.xad

Created: 7/17/2015 4:35:24 PM
 Modified: 7/17/2015 5:16:42 PM

Electropherogram Summary Continued ...



Setpoint Deviations for sample 4 : TBI #3 3.3A

Height Threshold [FU] : 0

Overall Results for sample 4 : TBI #3 3.3A

Number of peaks found: 44 Corr. Area 1: 2,081.1
 Noise: 0.3

Peak table for sample 4 : TBI #3 3.3A

Pea k	Size [bp]	Conc. [pg/μl]	Molarity [pmol/l]	Observations	Aligned Migration Time [s]
1	8	0.00	0.0		35.35
2	35	125.00	5,411.3	Lower Marker	43.00
3	49	295.84	9,181.0		48.50
4	54	44.41	1,253.9		49.34
5	59	36.85	952.2		49.85
6	65	27.22	631.8		50.52
7	84	730.79	13,131.1		52.45
8	117	6.36	82.2		55.77
9	180	14,503.29	121,814.2		64.97
10	264	414.48	2,375.6		74.09
11	276	212.14	1,164.3		75.06
12	284	204.05	1,087.8		75.73
13	293	330.21	1,708.3		76.45
14	306	167.38	829.4		77.37
15	320	257.01	1,216.4		78.21
16	335	172.43	779.3		79.09
17	381	138.38	549.9		81.78
18	390	112.65	437.8		82.29
19	419	138.62	501.1		83.84
20	473	139.40	446.1		86.57
21	528	108.16	310.4		88.76
22	560	101.45	274.7		89.72

Assay Class: High Sensitivity DNA Assay
 Data Path: C:\...ents and Settings\Bioanalyzer\2015-07-17\2015-07-17_003.xad

Created: 7/17/2015 4:35:24 PM
 Modified: 7/17/2015 5:16:42 PM

Electropherogram Summary Continued ...

... Peak table for sample 4 : TBI #3 3.3A

Peak	Size [bp]	Conc. [pg/µl]	Molarity [pmol/l]	Observations	Aligned Migration Time [s]
23	591	228.43	585.4		90.69
24	607	151.03	376.7		91.28
25	663	147.92	337.9		93.67
26	691	186.87	410.0		94.85
27	739	119.05	244.2		96.03
28	800	236.86	448.6		97.24
29	832	194.80	354.9		97.87
30	870	201.89	351.8		98.63
31	908	196.48	328.0		99.39
32	965	197.10	309.6		100.52
33	1,017	210.55	313.6		101.28
34	1,485	523.08	533.7		102.66
35	1,953	567.06	440.0		104.05
36	2,062	304.74	223.9		104.51
37	2,258	331.73	222.6		105.52
38	2,364	297.38	190.6		106.07
39	2,470	237.38	145.6		106.61
40	2,576	1,294.90	761.7		107.16
41	6,256	89.39	21.7		112.08
42	10,380	75.00	10.9	Upper Marker	113.00
43	26,432	0.00	0.0		114.43
44	33,042	0.00	0.0		115.02
45	44,373	0.00	0.0		116.03
46	76,005	0.00	0.0		118.84

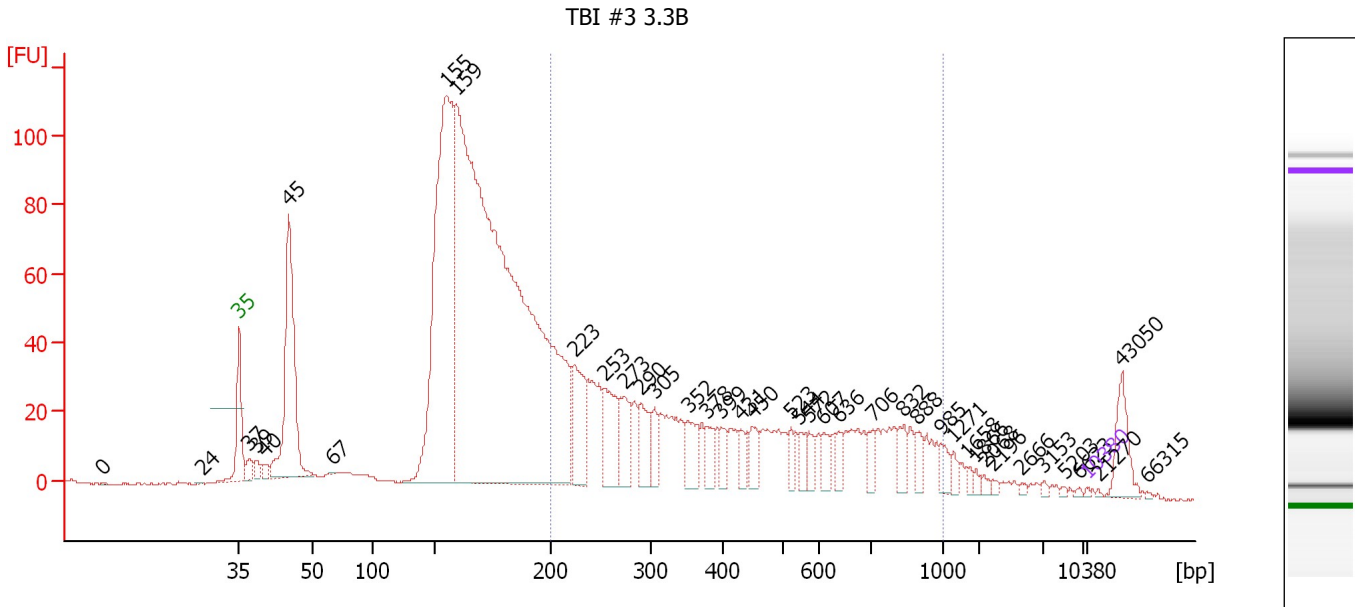
Region table for sample 4 : TBI #3 3.3A

From [bp]	Average Size [bp]	To [bp]	Corr. Area	Molarity [pmol/l]	Co % of lor Total	Size distribution in CV [%]	Conc. [pg/µl]
200	487	1,000	2,081.1	45,886.2	41	51.3	10,238.21

Assay Class: High Sensitivity DNA Assay
 Data Path: C:\...ents and Settings\Bioanalyzer\2015-07-17\2015-07-17_003.xad

Created: 7/17/2015 4:35:24 PM
 Modified: 7/17/2015 5:16:42 PM

Electropherogram Summary Continued ...



Setpoint Deviations for sample 5 : TBI #3 3.3B

Height Threshold [FU] : 0

Overall Results for sample 5 : TBI #3 3.3B

Number of peaks found: 40 Corr. Area 1: 857.8
 Noise: 0.3

Peak table for sample 5 : TBI #3 3.3B

Pea k	Size [bp]	Conc. [pg/μl]	Molarity [pmol/l]	Observations	Aligned Migration Time [s]
1	0	0.00	0.0		31.72
2	24	0.00	0.0		39.96
3	35	125.00	5,411.3	Lower Marker	43.00
4	37	1,251.33	51,101.0		43.84
5	39	1,054.36	41,450.6		44.41
6	40	769.63	29,007.7		45.07
7	45	20,809.51	696,191.2		47.10
8	67	47.39	1,076.8		50.67
9	155	44,650.74	435,742.3		60.09
10	159	133,117.16	1,265,793.0		60.89
11	223	6,927.98	47,110.1		70.67
12	253	5,477.31	32,769.6		73.18
13	273	3,885.78	21,565.4		74.81
14	290	3,525.99	18,450.1		76.17
15	305	1,799.06	8,941.3		77.32
16	352	2,885.21	12,406.8		80.09
17	378	1,633.95	6,549.8		81.59
18	399	1,547.71	5,876.0		82.82
19	431	1,371.83	4,818.6		84.45
20	450	1,931.29	6,506.2		85.38
21	523	1,051.55	3,048.6		88.59
22	544	1,071.16	2,981.9		89.26

Assay Class: High Sensitivity DNA Assay
 Data Path: C:\...ents and Settings\Bioanalyzer\2015-07-17\2015-07-17_003.xad

Created: 7/17/2015 4:35:24 PM
 Modified: 7/17/2015 5:16:42 PM

Electropherogram Summary Continued ...

... Peak table for sample 5 : TBI #3 3.3B

Peak	Size [bp]	Conc. [pg/μl]	Molarity [pmol/l]	Observations	Aligned Migration Time [s]
23	572	1,228.35	3,255.4		90.09
24	607	1,135.16	2,835.5		91.24
25	636	1,026.17	2,443.5		92.52
26	706	1,131.48	2,427.2		95.38
27	832	1,399.96	2,548.1		97.89
28	888	976.11	1,665.9		98.99
29	985	941.50	1,448.1		100.93
30	1,271	548.14	653.2		102.03
31	1,658	310.08	283.4		103.18
32	1,866	250.83	203.7		103.79
33	2,068	244.55	179.2		104.54
34	2,196	176.19	121.6		105.20
35	2,666	180.13	102.4		107.63
36	3,153	175.46	84.3		109.48
37	5,203	110.78	32.3		111.19
38	6,623	108.45	24.8		112.38
39	10,380	75.00	10.9	Upper Marker	113.00
40	21,270	0.00	0.0		113.97
41	43,050	0.00	0.0		115.91
42	66,315	0.00	0.0		117.98

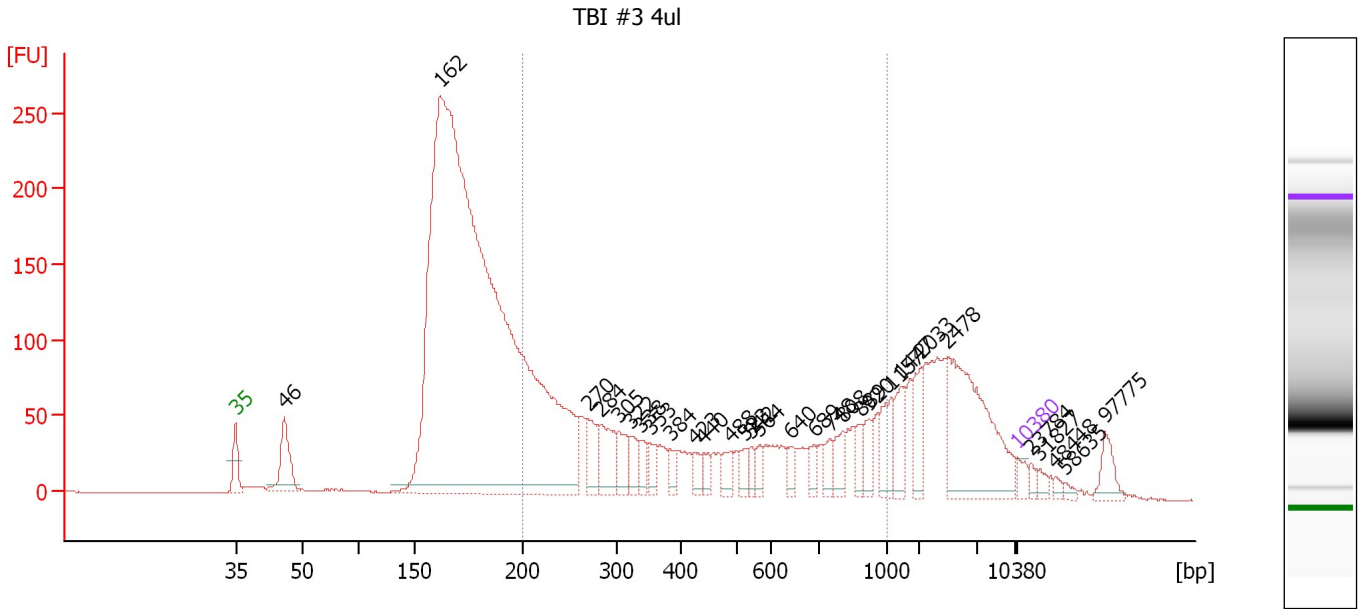
Region table for sample 5 : TBI #3 3.3B

From [bp]	Average Size [bp]	To [bp]	Corr. Area	Molarity [pmol/l]	Co % of Ior Total	Size distribution in CV [%]	Conc. [pg/μl]
200	447	1,000	857.8	406,328.9	35	48.8	89,258.66

Assay Class: High Sensitivity DNA Assay
 Data Path: C:\...ents and Settings\Bioanalyzer\2015-07-17\2015-07-17_003.xad

Created: 7/17/2015 4:35:24 PM
 Modified: 7/17/2015 5:16:42 PM

Electropherogram Summary Continued ...



Overall Results for sample 6 : TBI #3 4ul

Number of peaks found: 30 Corr. Area 1: 1,597.0
 Noise: 0.2

Peak table for sample 6 : TBI #3 4ul

Peak	Size [bp]	Conc. [pg/μl]	Molarity [pmol/l]	Observations	Aligned Migration Time [s]
1	35	125.00	5,411.3	Lower Marker	43.00
2	46	617.26	20,373.6		47.34
3	162	17,729.54	166,237.1		61.32
4	270	336.78	1,891.4		74.54
5	284	457.95	2,441.0		75.73
6	305	262.64	1,306.0		77.31
7	322	196.08	923.1		78.31
8	338	167.98	752.6		79.26
9	353	155.21	666.4		80.12
10	384	130.35	514.5		81.94
11	423	122.55	438.9		84.04
12	440	106.49	366.6		84.90
13	488	149.62	464.9		87.28
14	523	111.76	323.6		88.62
15	542	92.35	258.1		89.19
16	564	92.03	247.2		89.86
17	640	100.53	238.0		92.67
18	689	116.10	255.4		94.77
19	748	131.45	266.4		96.20
20	808	173.02	324.6		97.40
21	889	121.49	207.0		99.02
22	920	162.71	267.9		99.64
23	1,157	277.63	363.6		101.69
24	1,447	259.37	271.7		102.55
25	2,033	230.83	172.0		104.36

Assay Class: High Sensitivity DNA Assay
 Data Path: C:\...ents and Settings\Bioanalyzer\2015-07-17\2015-07-17_003.xad

Created: 7/17/2015 4:35:24 PM
 Modified: 7/17/2015 5:16:42 PM

Electropherogram Summary Continued ...

... Peak table for sample 6 : TBI #3 4ul

Peak	Size [bp]	Conc. [pg/μl]	Molarity [pmol/l]	Observations	Aligned Migration Time [s]
26	2,478	1,189.03	727.1		106.65
27	10,380	75.00	10.9	Upper Marker	113.00
28	23,784	0.00	0.0		114.19
29	31,827	0.00	0.0		114.91
30	48,448	0.00	0.0		116.39
31	58,635	0.00	0.0		117.29
32	97,775	0.00	0.0		120.78

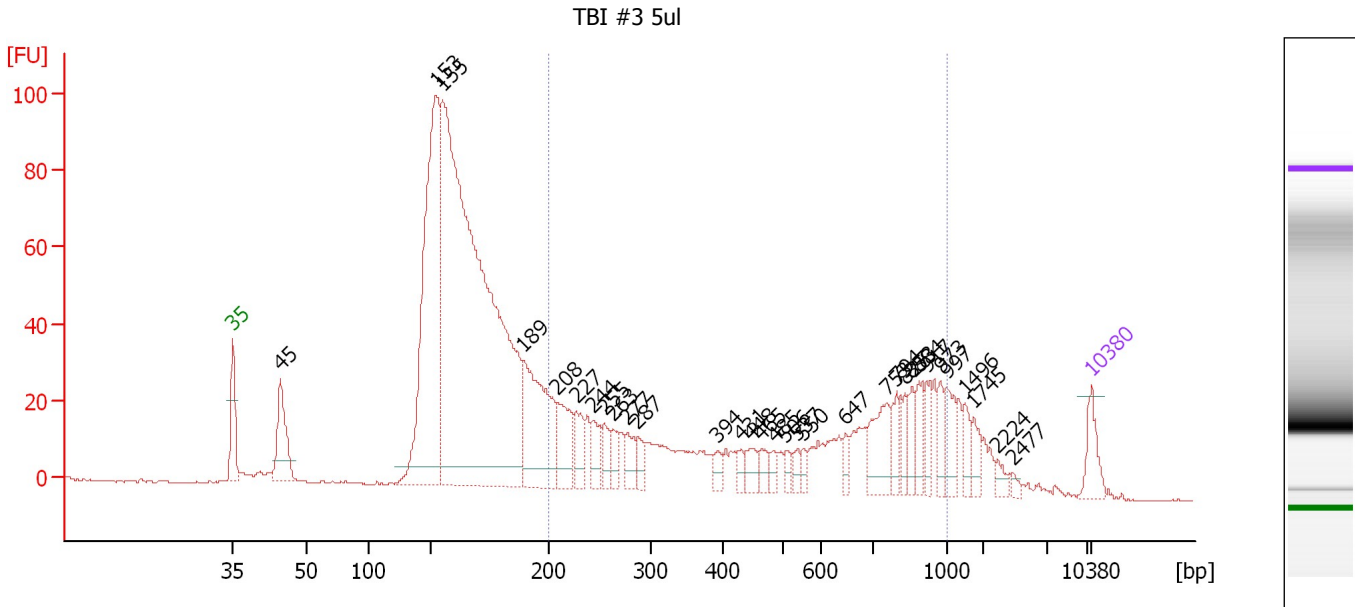
Region table for sample 6 : TBI #3 4ul

From [bp]	Average Size [bp]	To [bp]	Corr. Area	Molarity [pmol/l]	Co % of lor Total	Size distribution in CV [%]	Conc. [pg/μl]
200	470	1,000	1,597.0	34,204.9	32	51.3	7,583.05

Assay Class: High Sensitivity DNA Assay
 Data Path: C:\...ents and Settings\Bioanalyzer\2015-07-17\2015-07-17_003.xad

Created: 7/17/2015 4:35:24 PM
 Modified: 7/17/2015 5:16:42 PM

Electropherogram Summary Continued ...



Overall Results for sample 7 : TBI #3 5ul

Number of peaks found: 32 Corr. Area 1: 612.8
 Noise: 0.2

Peak table for sample 7 : TBI #3 5ul

Peak	Size [bp]	Conc. [pg/μl]	Molarity [pmol/l]	Observations	Aligned Migration Time [s]
1	35	125.00	5,411.3	Lower Marker	43.00
2	45	286.41	9,704.3		46.87
3	153	1,511.19	15,010.0		59.57
4	155	3,931.92	38,323.1		60.13
5	189	612.66	4,910.7		66.65
6	208	223.96	1,632.1		69.43
7	227	116.67	779.2		71.00
8	244	99.32	617.4		72.39
9	255	77.32	459.8		73.30
10	263	66.88	384.9		74.00
11	277	82.64	451.3		75.17
12	287	61.08	321.9		76.00
13	394	36.42	140.1		82.52
14	431	30.37	106.8		84.43
15	448	59.38	200.7		85.30
16	465	44.40	144.8		86.13
17	485	33.94	106.1		87.13
18	506	28.80	86.3		88.09
19	537	32.79	92.5		89.04
20	550	28.31	78.0		89.43
21	647	35.94	84.2		92.96
22	753	165.29	332.7		96.30
23	794	76.06	145.1		97.13
24	827	61.10	111.9		97.78
25	853	63.63	113.0		98.30

Assay Class: High Sensitivity DNA Assay
 Data Path: C:\...ents and Settings\Bioanalyzer\2015-07-17\2015-07-17_003.xad

Created: 7/17/2015 4:35:24 PM
 Modified: 7/17/2015 5:16:42 PM

Electropherogram Summary Continued ...

... Peak table for sample 7 : TBI #3 5ul

Peak	Size [bp]	Conc. [pg/μl]	Molarity [pmol/l]	Observations	Aligned Migration Time [s]
26	884	74.75	128.1		98.91
27	917	65.46	108.2		99.57
28	973	57.24	89.1		100.70
29	997	89.26	135.6		101.17
30	1,496	50.53	51.2		102.70
31	1,745	48.92	42.5		103.43
32	2,224	24.92	17.0		105.35
33	2,477	13.22	8.1		106.65
34	10,380	75.00	10.9	Upper Marker	113.00

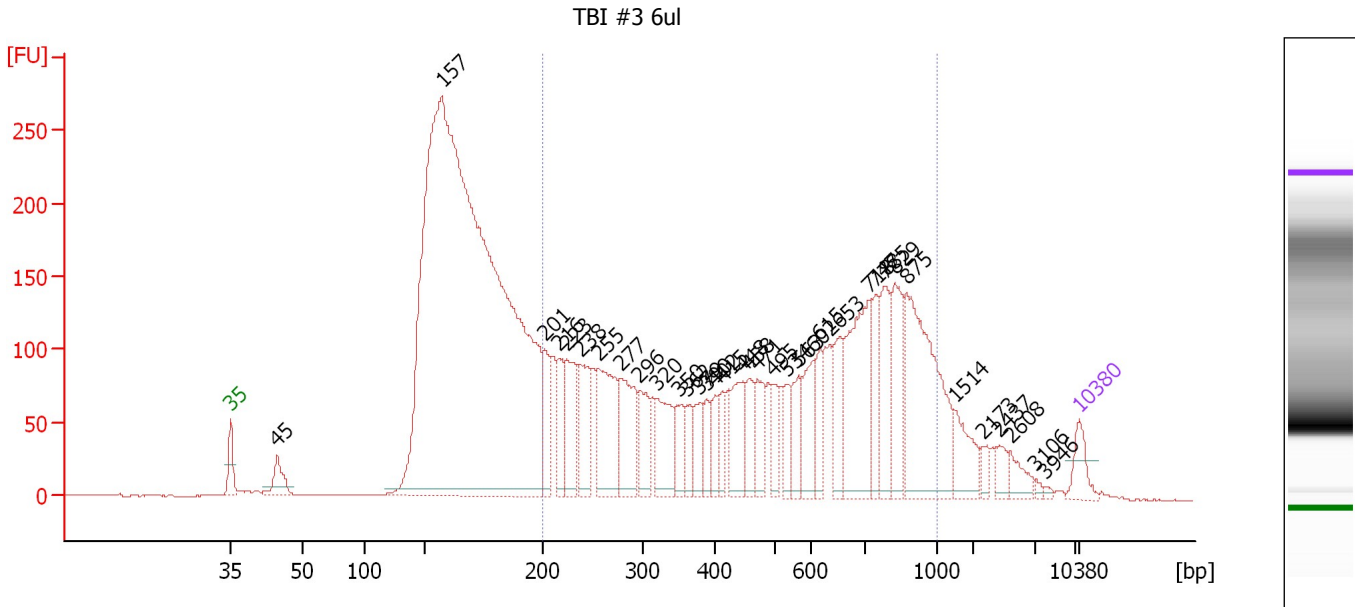
Region table for sample 7 : TBI #3 5ul

From [bp]	Average Size [bp]	To [bp]	Corr. Area	Molarity [pmol/l]	Co % of lor Total	Size distribution in CV [%]	Conc. [pg/μl]
200	536	1,000	612.8	10,795.5	34	47.3	2,650.00

Assay Class: High Sensitivity DNA Assay
 Data Path: C:\...ents and Settings\Bioanalyzer\2015-07-17\2015-07-17_003.xad

Created: 7/17/2015 4:35:24 PM
 Modified: 7/17/2015 5:16:42 PM

Electropherogram Summary Continued ...



Overall Results for sample 8 : TBI #3 6ul

Number of peaks found: 36 Corr. Area 1: 3,572.8
 Noise: 0.3

Peak table for sample 8 : TBI #3 6ul

Peak	Size [bp]	Conc. [pg/μl]	Molarity [pmol/l]	Observations	Aligned Migration Time [s]
1	35	125.00	5,411.3	Lower Marker	43.00
2	45	147.38	5,005.3		46.83
3	157	8,030.70	77,521.2		60.42
4	201	207.29	1,562.1		68.87
5	216	203.80	1,429.6		70.10
6	223	315.53	2,139.4		70.72
7	238	283.42	1,801.3		71.95
8	255	448.03	2,657.3		73.36
9	277	351.85	1,922.4		75.16
10	296	180.44	923.7		76.70
11	320	268.92	1,273.6		78.20
12	350	116.20	503.0		79.96
13	362	106.75	446.7		80.66
14	379	125.03	499.3		81.67
15	390	99.73	387.5		82.29
16	402	87.86	330.9		82.99
17	415	91.12	333.0		83.61
18	448	215.95	730.6		85.28
19	458	122.72	405.7		85.81
20	471	142.77	458.8		86.47
21	495	101.02	309.2		87.66
22	534	95.99	272.5		88.93
23	563	138.48	373.0		89.81
24	602	175.08	440.6		91.05
25	615	113.68	279.9		91.62

Assay Class: High Sensitivity DNA Assay
 Data Path: C:\...ents and Settings\Bioanalyzer\2015-07-17\2015-07-17_003.xad

Created: 7/17/2015 4:35:24 PM
 Modified: 7/17/2015 5:16:42 PM

Electropherogram Summary Continued ...

... Peak table for sample 8 : TBI #3 6ul

Peak	Size [bp]	Conc. [pg/μl]	Molarity [pmol/l]	Observations	Aligned Migration Time [s]
26	653	186.19	431.8		93.25
27	718	516.86	1,090.0		95.62
28	747	153.07	310.4		96.19
29	785	242.57	468.3		96.94
30	829	247.71	452.8		97.82
31	875	706.11	1,222.2		98.74
32	1,514	139.13	139.3		102.75
33	2,173	37.24	26.0		105.08
34	2,437	46.21	28.7		106.44
35	2,608	56.16	32.6		107.32
36	3,106	11.16	5.4		109.44
37	3,946	8.32	3.2		110.14
38	10,380	75.00	10.9	Upper Marker	113.00

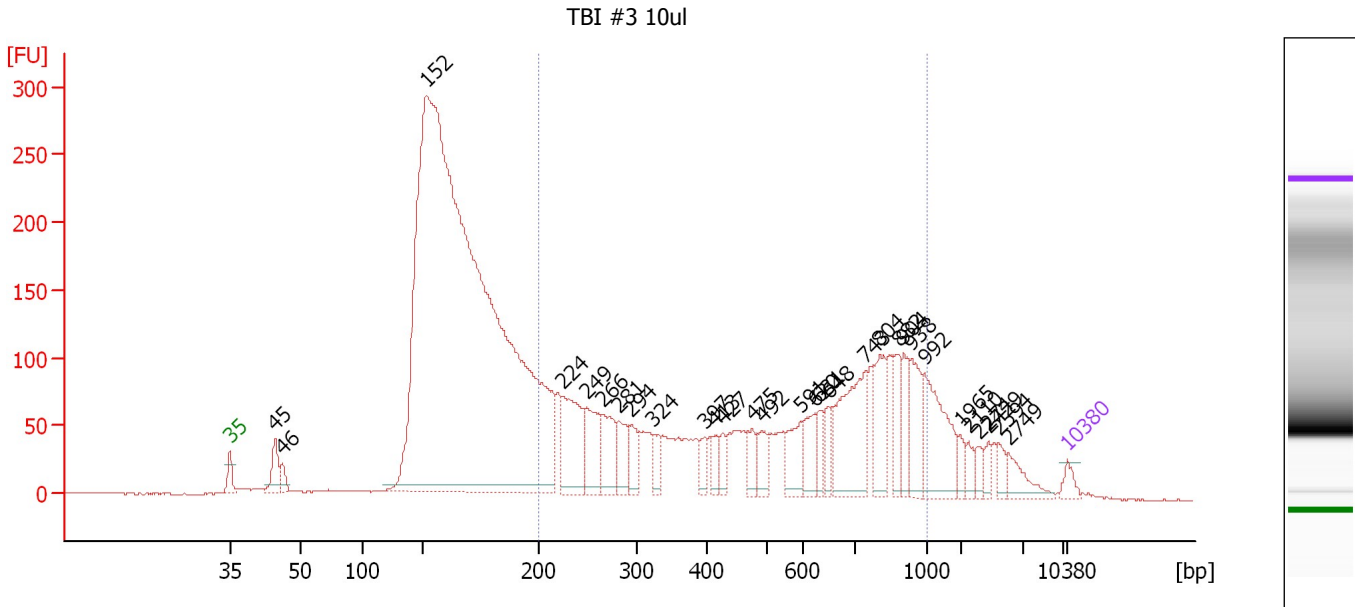
Region table for sample 8 : TBI #3 6ul

From [bp]	Average Size [bp]	To [bp]	Corr. Area	Molarity [pmol/l]	Co % of lor Total	Size distribution in CV [%]	Conc. [pg/μl]
200	531	1,000	3,572.8	26,458.6	50	44.0	6,733.65

Assay Class: High Sensitivity DNA Assay
 Data Path: C:\...ents and Settings\Bioanalyzer\2015-07-17\2015-07-17_003.xad

Created: 7/17/2015 4:35:24 PM
 Modified: 7/17/2015 5:16:42 PM

Electropherogram Summary Continued ...



Overall Results for sample 9 : TBI #3 10ul

Number of peaks found: 30 Corr. Area 1: 2,453.8
 Noise: 0.3

Peak table for sample 9 : TBI #3 10ul

Peak	Size [bp]	Conc. [pg/μl]	Molarity [pmol/l]	Observations	Aligned Migration Time [s]
1	35	125.00	5,411.3	Lower Marker	43.00
2	45	315.42	10,736.8		46.79
3	46	121.65	4,000.1		47.41
4	152	18,757.19	186,804.7		59.49
5	224	907.39	6,138.8		70.76
6	249	556.50	3,381.6		72.85
7	266	465.36	2,655.3		74.19
8	281	314.93	1,696.9		75.48
9	294	273.45	1,408.4		76.55
10	324	166.09	777.2		78.42
11	397	128.21	489.4		82.70
12	413	122.32	448.4		83.55
13	427	124.36	441.7		84.22
14	475	176.63	563.0		86.67
15	492	209.20	644.0		87.51
16	591	284.17	728.7		90.68
17	620	262.46	640.9		91.84
18	631	156.77	376.5		92.28
19	648	151.08	353.0		93.04
20	743	904.25	1,843.5		96.11
21	804	455.33	858.5		97.32
22	882	249.52	428.7		98.88
23	904	243.10	407.3		99.32
24	938	358.06	578.4		99.99
25	992	664.12	1,014.8		101.06

Assay Class: High Sensitivity DNA Assay
 Data Path: C:\...ents and Settings\Bioanalyzer\2015-07-17\2015-07-17_003.xad

Created: 7/17/2015 4:35:24 PM
 Modified: 7/17/2015 5:16:42 PM

Electropherogram Summary Continued ...

... Peak table for sample 9 : TBI #3 10ul

Peak	Size [bp]	Conc. [pg/μl]	Molarity [pmol/l]	Observations	Aligned Migration Time [s]
26	1,965	84.34	65.0		104.09
27	2,110	82.27	59.1		104.76
28	2,274	66.19	44.1		105.60
29	2,429	74.02	46.2		106.41
30	2,594	72.88	42.6		107.25
31	2,749	174.81	96.3		108.05
32	10,380	75.00	10.9	Upper Marker	113.00

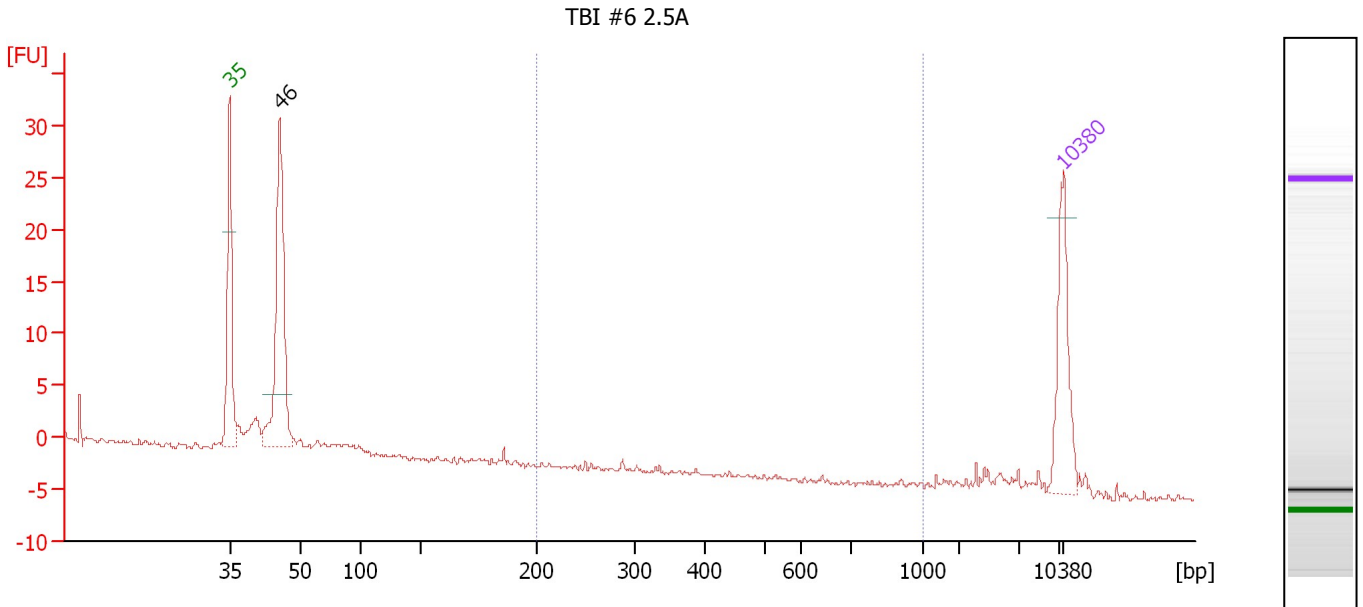
Region table for sample 9 : TBI #3 10ul

From [bp]	Average Size [bp]	To [bp]	Corr. Area	Molarity [pmol/l]	Co % of lor Total	Size distribution in CV [%]	Conc. [pg/μl]
200	534	1,000	2,453.8	40,342.5	40	46.0	10,066.55

Assay Class: High Sensitivity DNA Assay
 Data Path: C:\...ents and Settings\Bioanalyzer\2015-07-17\2015-07-17_003.xad

Created: 7/17/2015 4:35:24 PM
 Modified: 7/17/2015 5:16:42 PM

Electropherogram Summary Continued ...



Overall Results for sample 10 : TBI #6 2.5A

Number of peaks found: 1 Corr. Area 1: 1.3
 Noise: 0.2

Peak table for sample 10 : TBI #6 2.5A

Peak	Size [bp]	Conc. [pg/μl]	Molarity [pmol/l]	Observations	Aligned Migration Time [s]
1	35	125.00	5,411.3	Lower Marker	43.00
2	46	293.98	9,774.1		47.21
3	10,380	75.00	10.9	Upper Marker	113.00

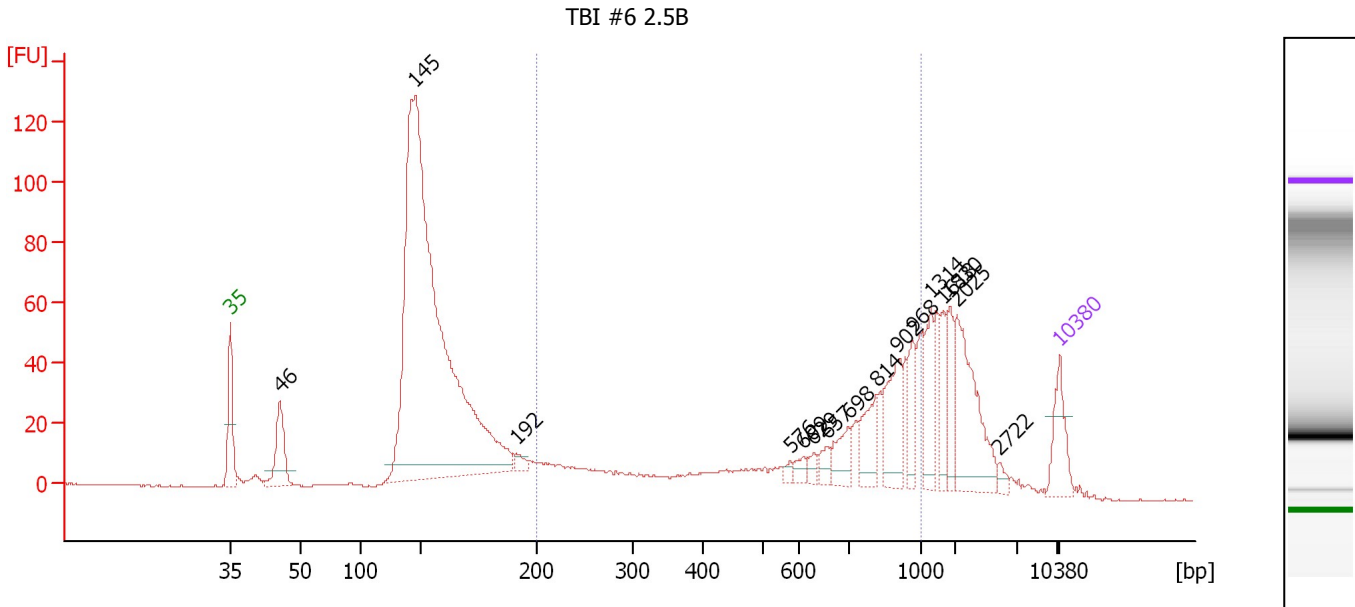
Region table for sample 10 : TBI #6 2.5A

From [bp]	Average Size [bp]	To [bp]	Corr. Area	Molarity [pmol/l]	Co % of Ior Total	Size distribution in CV [%]	Conc. [pg/μl]
200	436	1,000	1.3	24.5	1	53.2	5.37

Assay Class: High Sensitivity DNA Assay
 Data Path: C:\...ents and Settings\Bioanalyzer\2015-07-17\2015-07-17_003.xad

Created: 7/17/2015 4:35:24 PM
 Modified: 7/17/2015 5:16:42 PM

Electropherogram Summary Continued ...



Overall Results for sample 11 : TBI #6 2.5B

Number of peaks found: 16 Corr. Area 1: 497.6
 Noise: 0.2

Peak table for sample 11 : TBI #6 2.5B

Peak	Size [bp]	Conc. [pg/μl]	Molarity [pmol/l]	Observations	Aligned Migration Time [s]
1	35	125.00	5,411.3	Lower Marker	43.00
2	46	174.45	5,808.3		47.18
3	145	2,460.90	25,640.7		58.61
4	192	25.29	200.0		67.16
5	576	11.64	30.6		90.24
6	609	20.90	52.0		91.36
7	629	18.14	43.7		92.22
8	657	28.17	65.0		93.39
9	698	63.24	137.2		95.19
10	814	91.74	170.7		97.52
11	902	131.28	220.5		99.28
12	968	67.57	105.8		100.58
13	1,314	88.51	102.0		102.16
14	1,618	61.09	57.2		103.06
15	1,830	69.12	57.2		103.69
16	2,025	207.27	155.1		104.32
17	2,722	12.82	7.1		107.92
18	10,380	75.00	10.9	Upper Marker	113.00

Region table for sample 11 : TBI #6 2.5B

From [bp]	Average Size [bp]	To [bp]	Corr. Area	Molarity [pmol/l]	Co % of Ior Total	Size distribution in CV [%]	Conc. [pg/μl]
200	656	1,000	497.6	3,688.4	29	37.7	1,146.85

Assay Class: High Sensitivity DNA Assay
Data Path: C:\...ents and Settings\Bioanalyzer\2015-07-17\2015-07-17_003.xad

Created: 7/17/2015 4:35:24 PM
Modified: 7/17/2015 5:16:42 PM

Gel Image

