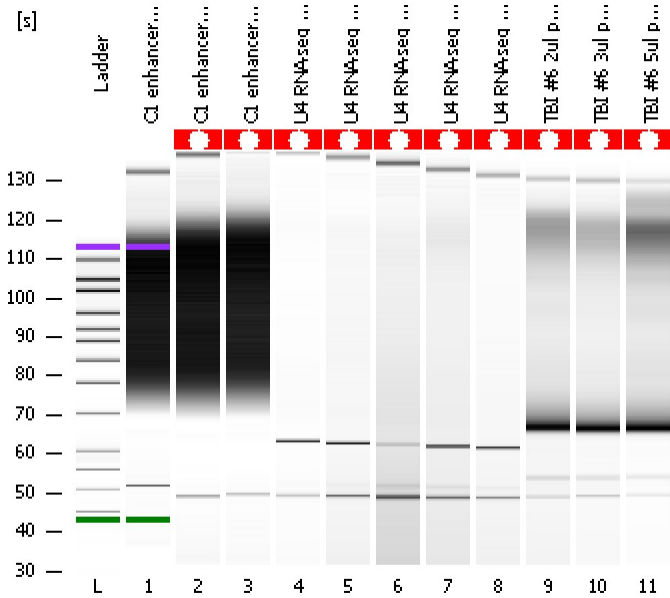


Assay Class: High Sensitivity DNA Assay  
Data Path: C:\...ents and Settings\Bioanalyzer\2015-07-21\2015-07-21\_002.xad

Created: 7/21/2015 12:29:36 PM  
Modified: 7/21/2015 1:10:55 PM

**Electrophoresis File Run Summary**



Instrument Information:

Instrument Name: DE13701086      Firmware: C.01.069  
Serial#: DE13701086      Type: G2938B

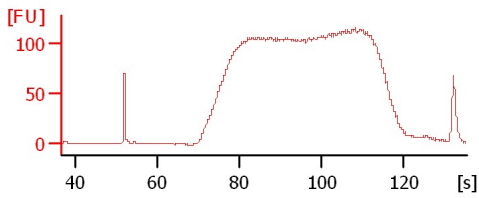
Assay Information:

Assay Origin Path: C:\Program Files\Agilent\2100 bioanalyzer\2100 expert\assays\dsDNA\High Sensitivity DNA.xsy  
Assay Class: High Sensitivity DNA Assay  
Version: 1.03  
Assay Comments: Copyright © 2003-2010 Agilent Technologies

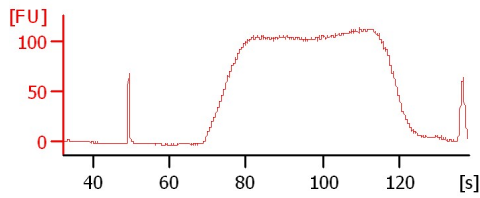
Chip Information:

Chip Lot #:   
Reagent Kit Lot #:   
Chip Comments:

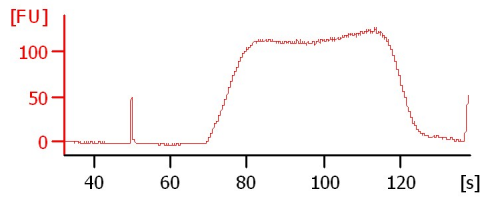
**C1 enhancer 1/3**



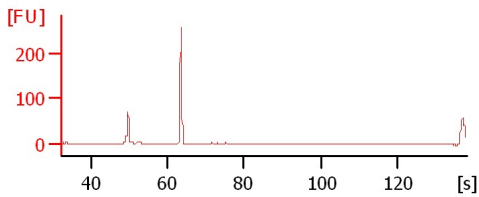
**C1 enhancer 2/3**



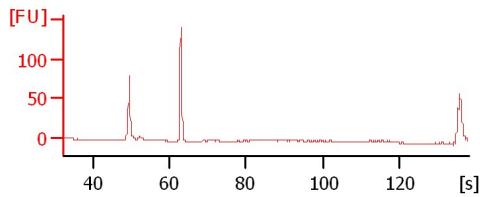
**C1 enhancer 3/3**



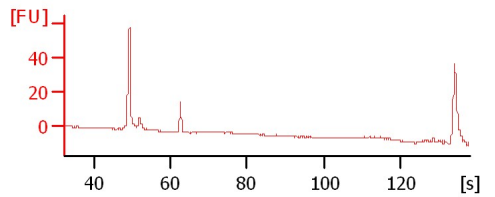
**U4 RNA-seq #1**



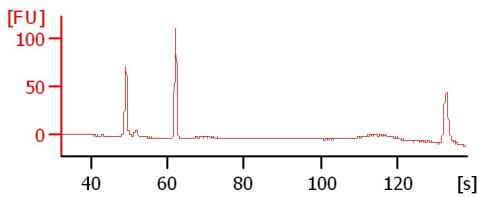
**U4 RNA-seq #2**



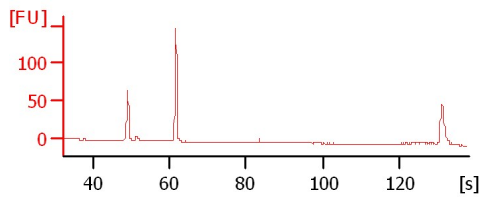
**U4 RNA-seq #3**



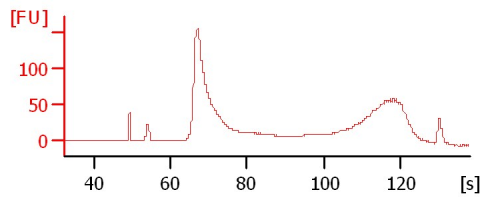
**U4 RNA-seq #4**



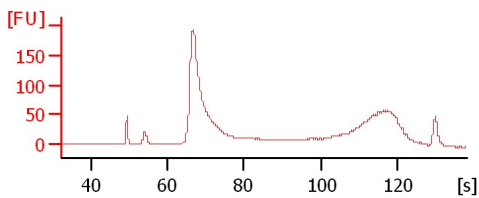
**U4 RNA-seq #5**



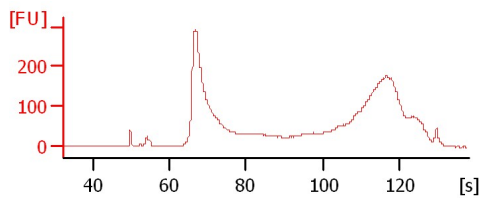
**TBI #6 2ul primer cleanup**



**TBI #6 3ul primer cleanup**



**TBI #6 5ul primer cleanup**



Assay Class: High Sensitivity DNA Assay  
Data Path: C:\...ents and Settings\Bioanalyzer\2015-07-21\2015-07-21\_002.xad

Created: 7/21/2015 12:29:36 PM  
Modified: 7/21/2015 1:10:55 PM

**Electrophoresis File Run Summary (Chip Summary)**

Sample Name	Sample Comment	Rest. Digest	Status	Observation	Result Label	Result Color
C1 enhancer 1/3		<input type="checkbox"/>	✓			
C1 enhancer 2/3		<input type="checkbox"/>	✓			
C1 enhancer 3/3		<input type="checkbox"/>	✓			
U4 RNA-seq #1		<input type="checkbox"/>	✓			
U4 RNA-seq #2		<input type="checkbox"/>	✓			
U4 RNA-seq #3		<input type="checkbox"/>	✓			
U4 RNA-seq #4		<input type="checkbox"/>	✓			
U4 RNA-seq #5		<input type="checkbox"/>	✓			
TBI #6 2ul primer cleanup		<input type="checkbox"/>	✓			
TBI #6 3ul primer cleanup		<input type="checkbox"/>	✓			
TBI #6 5ul primer cleanup		<input type="checkbox"/>	✓			
Ladder		<input type="checkbox"/>	✓			

**Chip Lot #**

**Reagent Kit Lot #**

**Chip Comments :**

Assay Class: High Sensitivity DNA Assay  
Data Path: C:\...ents and Settings\Bioanalyzer\2015-07-21\2015-07-21\_002.xad

Created: 7/21/2015 12:29:36 PM  
Modified: 7/21/2015 1:10:55 PM

**Electrophoresis Assay Details**

**General Analysis Settings**

Number of Available Sample and Ladder Wells (Max.) : 12  
Minimum Visible Range [s] : 32  
Maximum Visible Range [s] : 138  
Start Analysis Time Range [s] : 33  
End Analysis Time Range [s] : 137.5  
Ladder Concentration [pg/ $\mu$ l] : 1950  
Uses Standard Area for Ladder Fragments  
Lower Marker Concentration [pg/ $\mu$ l] : 125  
Upper Marker Concentration [pg/ $\mu$ l] : 75  
Used Upper Marker for Quantitation  
Standard Curve Fit is Point to Point  
Show Data Aligned to Lower and Upper Marker

**Integrator Settings**

Integration Start Time [s] : 33.05  
Integration End Time [s] : 137  
Slope Threshold : 0.8  
Height Threshold [FU] : 5  
Area Threshold : 0.1  
Width Threshold [s] : 0.6  
Baseline Plateau [s] : 0.5

**Filter Settings**

Filter Width [s] : 0.5  
Polynomial Order : 4

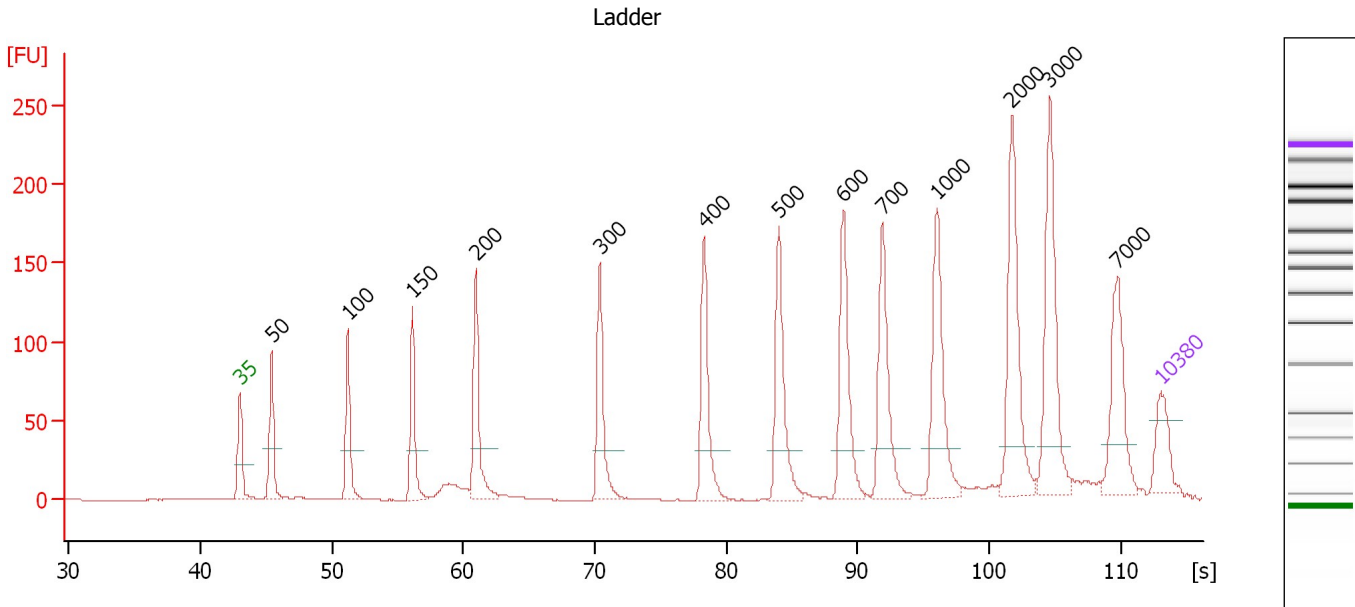
**Ladder**

Ladder Peak	Size	Area
1	35	160
2	50	210
3	100	208
4	150	221
5	200	242
6	300	270
7	400	305
8	500	306
9	600	336
10	700	321
11	1000	366
12	2000	413
13	3000	411
14	7000	400
15	10380	214

Assay Class: High Sensitivity DNA Assay  
 Data Path: C:\...ents and Settings\Bioanalyzer\2015-07-21\2015-07-21\_002.xad

Created: 7/21/2015 12:29:36 PM  
 Modified: 7/21/2015 1:10:55 PM

**Electropherogram Summary**



**Overall Results for Ladder**

Noise: 0.2

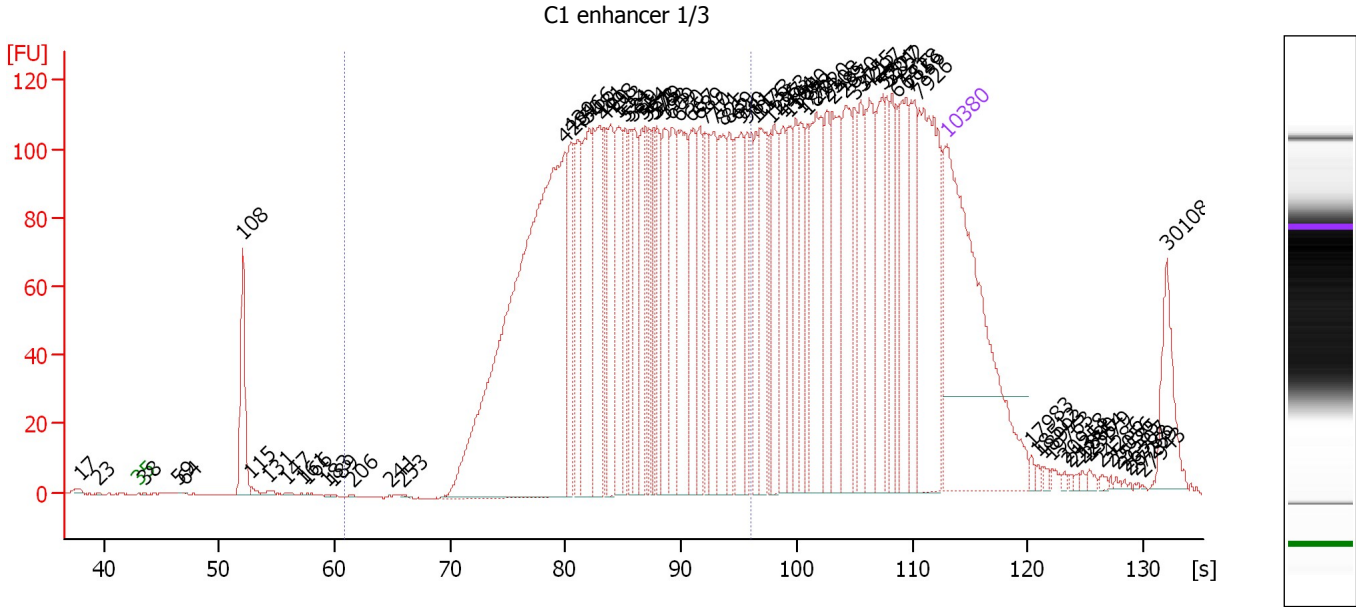
**Peak table for Ladder**

Peak	Size [bp]	Conc. [pg/μl]	Molarity [pmol/l]	Observations	Aligned Migration Time [s]
1	35	125.00	5,411.3	Lower Marker	43.00
2	50	150.00	4,545.5	Ladder Peak	45.41
3	100	150.00	2,272.7	Ladder Peak	51.21
4	150	150.00	1,515.2	Ladder Peak	56.11
5	200	150.00	1,136.4	Ladder Peak	60.93
6	300	150.00	757.6	Ladder Peak	70.36
7	400	150.00	568.2	Ladder Peak	78.29
8	500	150.00	454.5	Ladder Peak	83.96
9	600	150.00	378.8	Ladder Peak	88.90
10	700	150.00	324.7	Ladder Peak	91.89
11	1,000	150.00	227.3	Ladder Peak	96.01
12	2,000	150.00	113.6	Ladder Peak	101.69
13	3,000	150.00	75.8	Ladder Peak	104.59
14	7,000	150.00	32.5	Ladder Peak	109.73
15	10,380	75.00	10.9	Upper Marker	113.00

Assay Class: High Sensitivity DNA Assay  
Data Path: C:\...ents and Settings\Bioanalyzer\2015-07-21\2015-07-21\_002.xad

Created: 7/21/2015 12:29:36 PM  
Modified: 7/21/2015 1:10:55 PM

Electropherogram Summary Continued ...



Setpoint Deviations for sample 1 : **C1 enhancer 1/3**

Height Threshold [FU] : 0                      Width Threshold [s] : 0  
Area Threshold : 0

Overall Results for sample 1 : **C1 enhancer 1/3**

Number of peaks found: 83                      Corr. Area 1: 2,776.5  
Noise: 0.2

Peak table for sample 1 : **C1 enhancer 1/3**

Peak	Size [bp]	Conc. [pg/ $\mu$ l]	Molarity [pmol/l]	Observations	Aligned Migration Time [s]
1	17	0.00	0.0		37.88
2	23	0.00	0.0		39.47
3	35	125.00	5,411.3	Lower Marker	43.00
4	38	0.05	2.0		43.47
5	59	0.04	1.0		46.44
6	64	0.06	1.5		47.00
7	108	29.21	408.6		52.02
8	115	1.38	18.1		52.72
9	131	1.11	12.8		54.26
10	147	0.49	5.1		55.79
11	161	0.16	1.5		57.19
12	166	0.25	2.3		57.60
13	183	0.09	0.8		59.33
14	189	0.10	0.8		59.84
15	206	0.10	0.8		61.47
16	241	0.02	0.1		64.77
17	253	0.15	0.9		65.88
18	428	212.78	753.0		79.88
19	439	21.89	75.6		80.49
20	450	23.82	80.1		81.14
21	466	36.81	119.7		82.02

Assay Class: High Sensitivity DNA Assay  
 Data Path: C:\...ents and Settings\Bioanalyzer\2015-07-21\2015-07-21\_002.xad

Created: 7/21/2015 12:29:36 PM  
 Modified: 7/21/2015 1:10:55 PM

**Electropherogram Summary Continued ...**

**... Peak table for sample 1 : C1 enhancer 1/3**

Peak	Size [bp]	Conc. [pg/μl]	Molarity [pmol/l]	Observations	Aligned Migration Time [s]
22	481	35.16	110.7		82.91
23	490	9.18	28.4		83.37
24	498	25.61	77.9		83.84
25	513	25.00	73.9		84.58
26	524	15.73	45.5		85.14
27	531	10.37	29.6		85.51
28	539	20.38	57.3		85.88
29	554	19.92	54.5		86.63
30	561	8.25	22.2		87.00
31	573	8.12	21.5		87.56
32	575	4.85	12.8		87.65
33	579	14.36	37.6		87.88
34	593	23.39	59.8		88.53
35	609	20.13	50.0		89.19
36	630	32.40	78.0		89.79
37	667	23.26	52.8		90.91
38	689	18.78	41.3		91.56
39	710	16.96	36.2		92.02
40	771	20.73	40.7		92.86
41	825	24.20	44.4		93.60
42	869	16.66	29.0		94.21
43	940	25.31	40.8		95.19
44	981	10.45	16.2		95.74
45	1,076	11.42	16.1		96.44
46	1,133	22.90	30.6		96.77
47	1,297	4.90	5.7		97.70
48	1,363	18.28	20.3		98.07
49	1,494	14.29	14.5		98.81
50	1,584	14.19	13.6		99.33
51	1,690	15.24	13.7		99.93
52	1,772	10.39	8.9		100.40
53	1,871	9.02	7.3		100.95
54	2,020	29.10	21.8		101.74
55	2,308	13.42	8.8		102.58
56	2,485	23.38	14.3		103.09
57	2,870	22.38	11.8		104.21
58	3,321	11.13	5.1		105.00
59	3,755	16.78	6.8		105.56
60	4,297	21.25	7.5		106.26
61	5,201	20.19	5.9		107.42
62	5,527	9.03	2.5		107.84
63	5,852	12.31	3.2		108.26
64	6,141	6.63	1.6		108.63
65	6,828	21.19	4.7		109.51
66	7,156	16.50	3.5		109.88
67	7,926	46.19	8.8		110.63
68	10,380	75.00	10.9	Upper Marker	113.00
69	17,983	0.00	0.0		120.35
70	18,512	0.00	0.0		120.86
71	18,993	0.00	0.0		121.33
72	19,763	0.00	0.0		122.07
73	20,918	0.00	0.0		123.19
74	21,351	0.00	0.0		123.60

Assay Class: High Sensitivity DNA Assay  
 Data Path: C:\...ents and Settings\Bioanalyzer\2015-07-21\2015-07-21\_002.xad

Created: 7/21/2015 12:29:36 PM  
 Modified: 7/21/2015 1:10:55 PM

**Electropherogram Summary Continued ...**

**... Peak table for sample 1 : C1 enhancer 1/3**

Peak	Size [bp]	Conc. [pg/μl]	Molarity [pmol/l]	Observations	Aligned Migration Time [s]
75	21,880	0.00	0.0		124.12
76	22,554	0.00	0.0		124.77
77	23,179	0.00	0.0		125.37
78	24,286	0.00	0.0		126.44
79	25,056	0.00	0.0		127.19
80	25,585	0.00	0.0		127.70
81	26,307	0.00	0.0		128.40
82	26,788	0.00	0.0		128.86
83	27,269	0.00	0.0		129.33
84	27,943	0.00	0.0		129.98
85	30,108	0.00	0.0		132.07

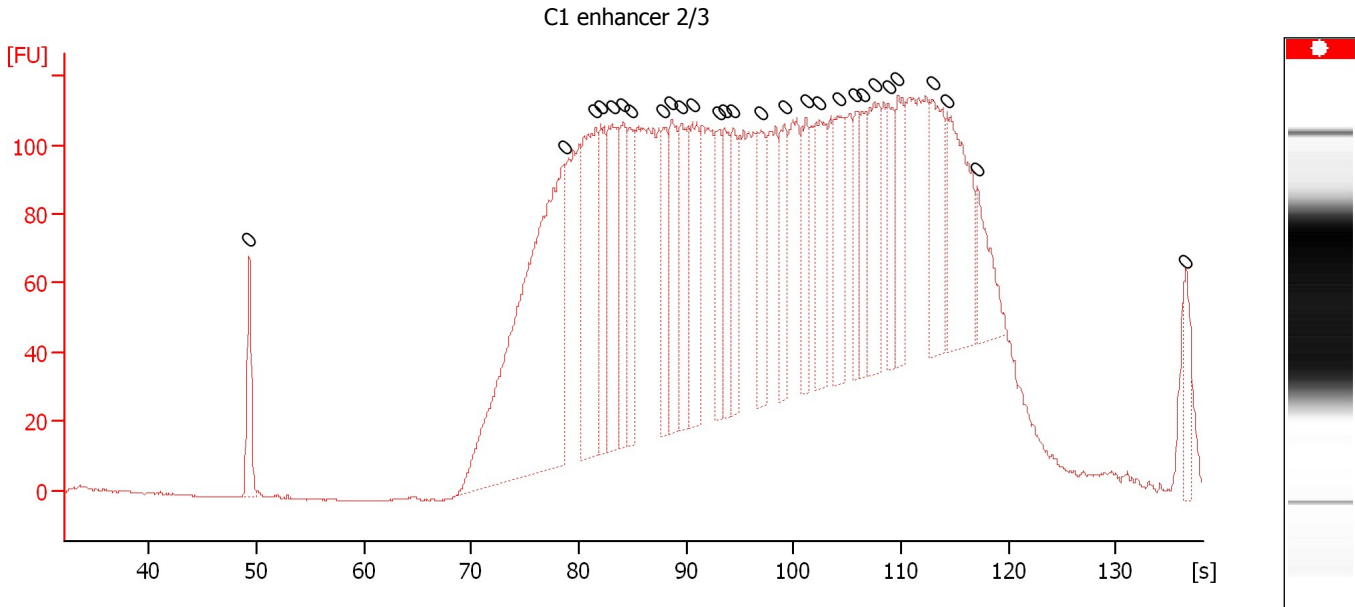
**Region table for sample 1 : C1 enhancer 1/3**

From [bp]	Average Size [bp]	To [bp]	Corr. Area	Molarity [pmol/l]	Co % of lor Total	Size distribution in CV [%]	Conc. [pg/μl]
200	567	1,000	2,776.5	2,276.9	58	29.9	761.73

Assay Class: High Sensitivity DNA Assay  
 Data Path: C:\...ents and Settings\Bioanalyzer\2015-07-21\2015-07-21\_002.xad

Created: 7/21/2015 12:29:36 PM  
 Modified: 7/21/2015 1:10:55 PM

**Electropherogram Summary Continued ...**



**Overall Results for sample 2 : C1 enhancer 2/3**

Number of peaks found: 0                      Noise: 0.2

**Peak table for sample 2 : C1 enhancer 2/3**

Peak	Size [bp]	Conc. [pg/μl]	Molarity [pmol/l]	Observations	Aligned Migration Time [s]
1	0	0.00	0.0		49.30
2	0	0.00	0.0		78.60
3	0	0.00	0.0		81.55
4	0	0.00	0.0		82.05
5	0	0.00	0.0		83.10
6	0	0.00	0.0		84.15
7	0	0.00	0.0		84.75
8	0	0.00	0.0		87.90
9	0	0.00	0.0		88.60
10	0	0.00	0.0		89.55
11	0	0.00	0.0		90.60
12	0	0.00	0.0		92.95
13	0	0.00	0.0		93.60
14	0	0.00	0.0		94.40
15	0	0.00	0.0		96.95
16	0	0.00	0.0		99.15
17	0	0.00	0.0		101.15
18	0	0.00	0.0		102.45
19	0	0.00	0.0		104.25
20	0	0.00	0.0		105.75
21	0	0.00	0.0		106.40
22	0	0.00	0.0		107.50
23	0	0.00	0.0		108.80
24	0	0.00	0.0		109.70
25	0	0.00	0.0		112.90
26	0	0.00	0.0		114.35
27	0	0.00	0.0		117.10



Assay Class: High Sensitivity DNA Assay  
Data Path: C:\...ents and Settings\Bioanalyzer\2015-07-21\2015-07-21\_002.xad

Created: 7/21/2015 12:29:36 PM  
Modified: 7/21/2015 1:10:55 PM

**Electropherogram Summary Continued ...**

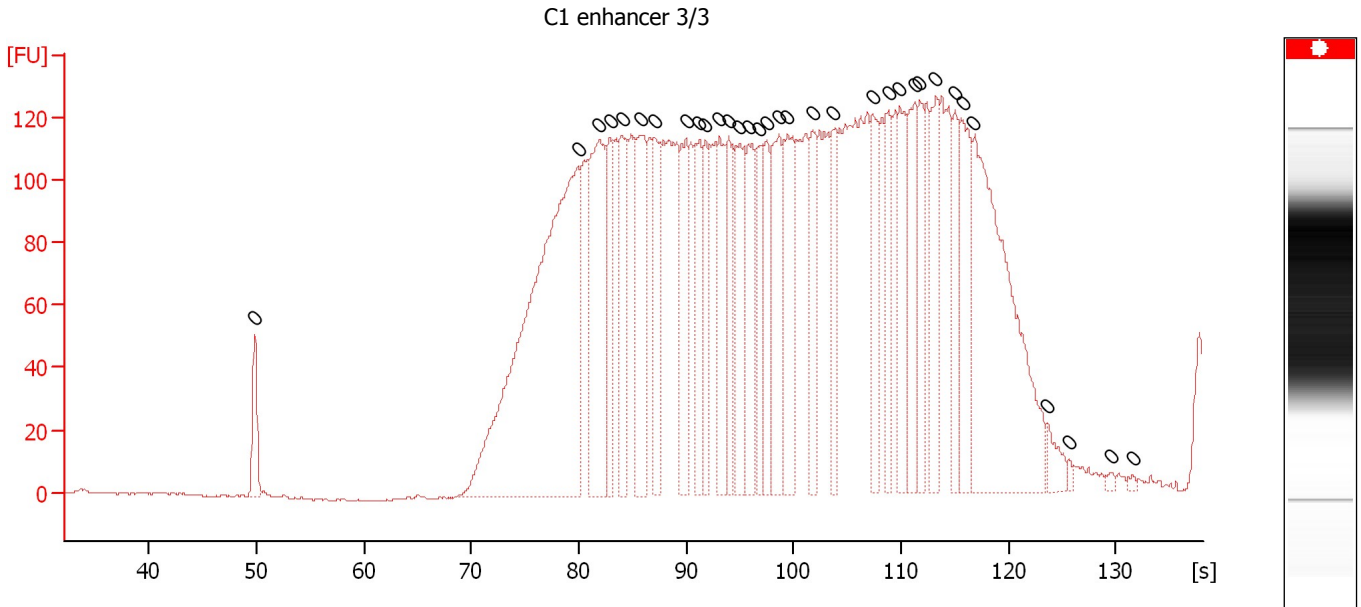
... Peak table for sample 2 : C1 enhancer 2/3

Peak	Size [bp]	Conc. [pg/ $\mu$ l]	Molarity [pmol/l]	Observations	Aligned Migration Time [s]
28	0	0.00	0.0		136.50

Assay Class: High Sensitivity DNA Assay  
 Data Path: C:\...ents and Settings\Bioanalyzer\2015-07-21\2015-07-21\_002.xad

Created: 7/21/2015 12:29:36 PM  
 Modified: 7/21/2015 1:10:55 PM

**Electropherogram Summary Continued ...**



**Overall Results for sample 3 : C1 enhancer 3/3**

Number of peaks found: 0                      Noise: 0.2

**Peak table for sample 3 : C1 enhancer 3/3**

Peak	Size [bp]	Conc. [pg/μl]	Molarity [pmol/l]	Observations	Aligned Migration Time [s]
1	0	0.00	0.0		49.85
2	0	0.00	0.0		79.95
3	0	0.00	0.0		81.85
4	0	0.00	0.0		82.90
5	0	0.00	0.0		84.00
6	0	0.00	0.0		85.70
7	0	0.00	0.0		87.10
8	0	0.00	0.0		90.00
9	0	0.00	0.0		91.20
10	0	0.00	0.0		91.70
11	0	0.00	0.0		93.10
12	0	0.00	0.0		93.95
13	0	0.00	0.0		94.95
14	0	0.00	0.0		95.75
15	0	0.00	0.0		96.70
16	0	0.00	0.0		97.50
17	0	0.00	0.0		98.60
18	0	0.00	0.0		99.40
19	0	0.00	0.0		101.80
20	0	0.00	0.0		103.70
21	0	0.00	0.0		107.35
22	0	0.00	0.0		108.80
23	0	0.00	0.0		109.90
24	0	0.00	0.0		111.25
25	0	0.00	0.0		111.70
26	0	0.00	0.0		113.25
27	0	0.00	0.0		115.00

Assay Class: High Sensitivity DNA Assay  
Data Path: C:\...ents and Settings\Bioanalyzer\2015-07-21\2015-07-21\_002.xad

Created: 7/21/2015 12:29:36 PM  
Modified: 7/21/2015 1:10:55 PM

**Electropherogram Summary Continued ...****... Peak table for sample 3 : C1 enhancer 3/3**

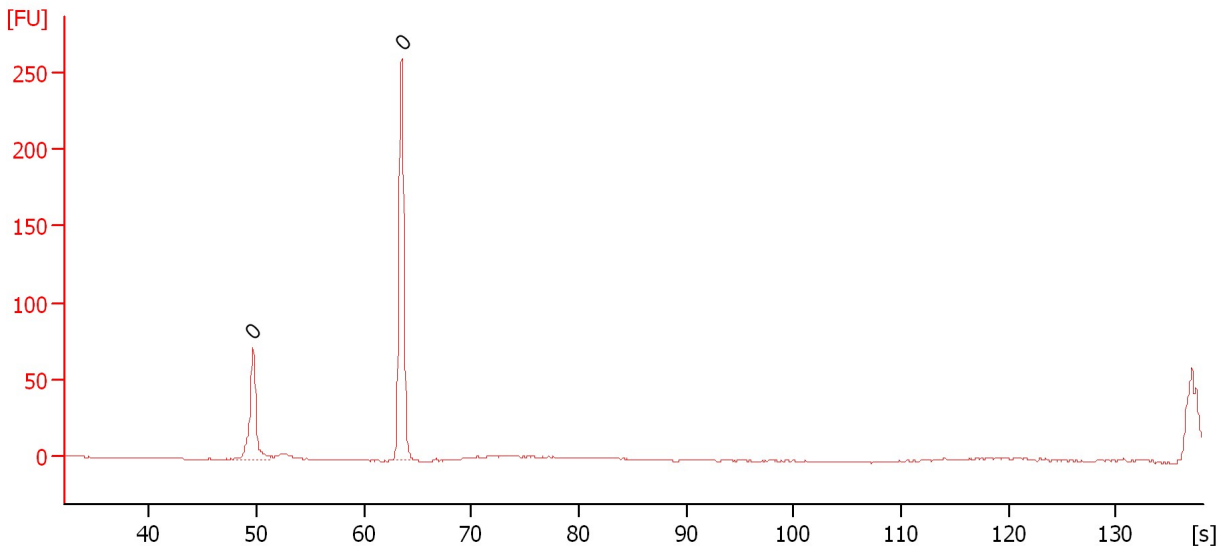
Peak	Size [bp]	Conc. [pg/ $\mu$ l]	Molarity [pmol/l]	Observations	Aligned Migration Time [s]
28	0	0.00	0.0		115.75
29	0	0.00	0.0		116.80
30	0	0.00	0.0		123.60
31	0	0.00	0.0		125.65
32	0	0.00	0.0		129.60
33	0	0.00	0.0		131.60

Assay Class: High Sensitivity DNA Assay  
Data Path: C:\...ents and Settings\Bioanalyzer\2015-07-21\2015-07-21\_002.xad

Created: 7/21/2015 12:29:36 PM  
Modified: 7/21/2015 1:10:55 PM

**Electropherogram Summary Continued ...**

U4 RNA-seq #1



**Overall Results for sample 4 : U4 RNA-seq #1**

Number of peaks found: 0                      Noise: 0.2

**Peak table for sample 4 : U4 RNA-seq #1**

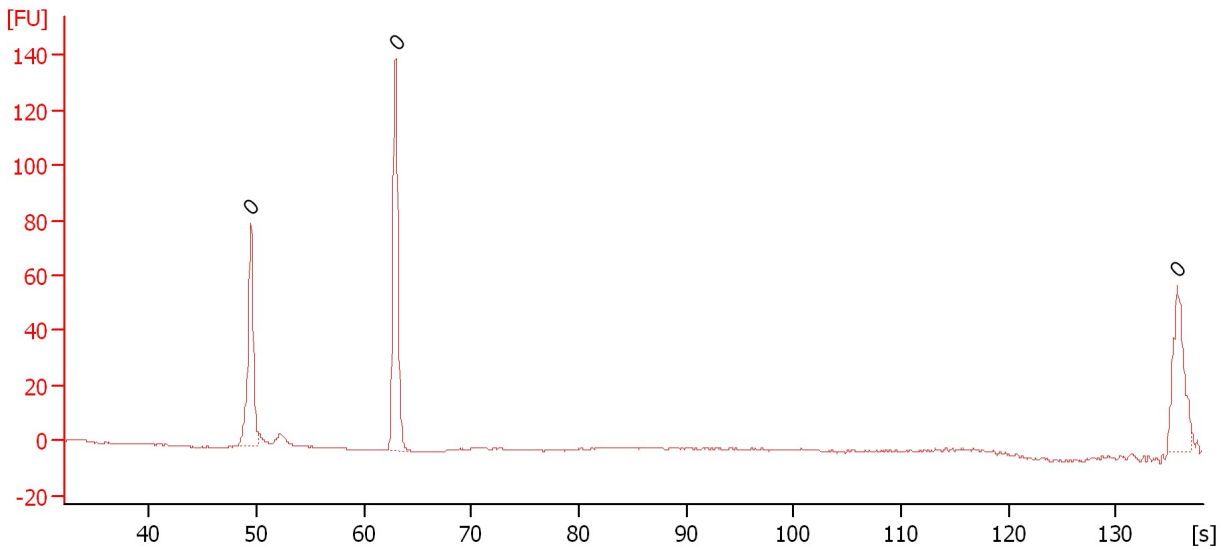
Peak	Size [bp]	Conc. [pg/μl]	Molarity [pmol/l]	Observations	Aligned Migration Time [s]
1	0	0.00	0.0		49.65
2	0	0.00	0.0		63.50

Assay Class: High Sensitivity DNA Assay  
Data Path: C:\...ents and Settings\Bioanalyzer\2015-07-21\2015-07-21\_002.xad

Created: 7/21/2015 12:29:36 PM  
Modified: 7/21/2015 1:10:55 PM

**Electropherogram Summary Continued ...**

U4 RNA-seq #2



**Overall Results for sample 5 : U4 RNA-seq #2**

Number of peaks found: 0                      Noise: 0.2

**Peak table for sample 5 : U4 RNA-seq #2**

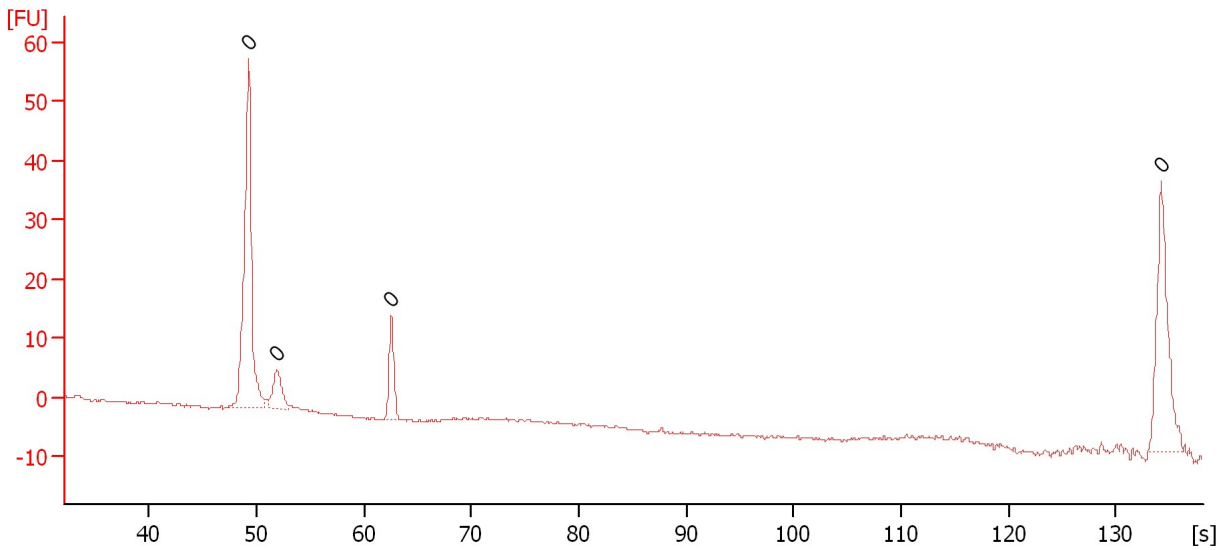
Peak	Size [bp]	Conc. [pg/μl]	Molarity [pmol/l]	Observations	Aligned Migration Time [s]
1	0	0.00	0.0		49.50
2	0	0.00	0.0		62.95
3	0	0.00	0.0		135.75

Assay Class: High Sensitivity DNA Assay  
 Data Path: C:\...ents and Settings\Bioanalyzer\2015-07-21\2015-07-21\_002.xad

Created: 7/21/2015 12:29:36 PM  
 Modified: 7/21/2015 1:10:55 PM

**Electropherogram Summary Continued ...**

U4 RNA-seq #3



**Overall Results for sample 6 : U4 RNA-seq #3**

Number of peaks found: 0                      Noise: 0.2

**Peak table for sample 6 : U4 RNA-seq #3**

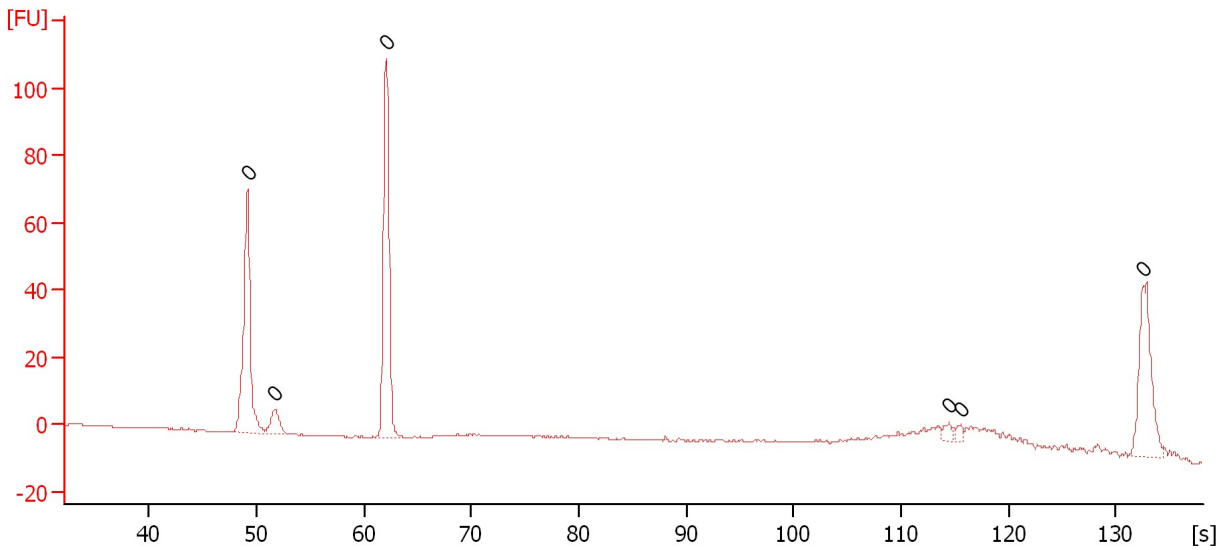
Peak	Size [bp]	Conc. [pg/μl]	Molarity [pmol/l]	Observations	Aligned Migration Time [s]
1	0	0.00	0.0		49.25
2	0	0.00	0.0		51.90
3	0	0.00	0.0		62.55
4	0	0.00	0.0		134.20

Assay Class: High Sensitivity DNA Assay  
Data Path: C:\...ents and Settings\Bioanalyzer\2015-07-21\2015-07-21\_002.xad

Created: 7/21/2015 12:29:36 PM  
Modified: 7/21/2015 1:10:55 PM

**Electropherogram Summary Continued ...**

U4 RNA-seq #4



**Overall Results for sample 7 : U4 RNA-seq #4**

Number of peaks found: 0 Noise: 0.2

**Peak table for sample 7 : U4 RNA-seq #4**

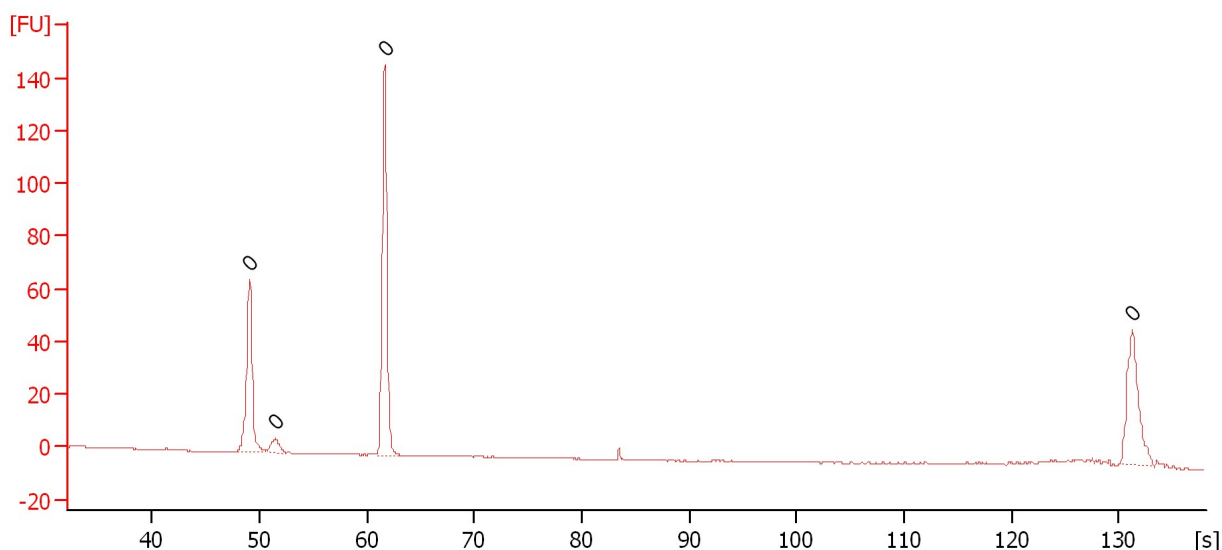
Peak	Size [bp]	Conc. [pg/μl]	Molarity [pmol/l]	Observations	Aligned Migration Time [s]
1	0	0.00	0.0		49.15
2	0	0.00	0.0		51.70
3	0	0.00	0.0		62.10
4	0	0.00	0.0		114.45
5	0	0.00	0.0		115.50
6	0	0.00	0.0		132.50

Assay Class: High Sensitivity DNA Assay  
 Data Path: C:\...ents and Settings\Bioanalyzer\2015-07-21\2015-07-21\_002.xad

Created: 7/21/2015 12:29:36 PM  
 Modified: 7/21/2015 1:10:55 PM

**Electropherogram Summary Continued ...**

U4 RNA-seq #5



**Overall Results for sample 8 : U4 RNA-seq #5**

Number of peaks found: 0 Noise: 0.1

**Peak table for sample 8 : U4 RNA-seq #5**

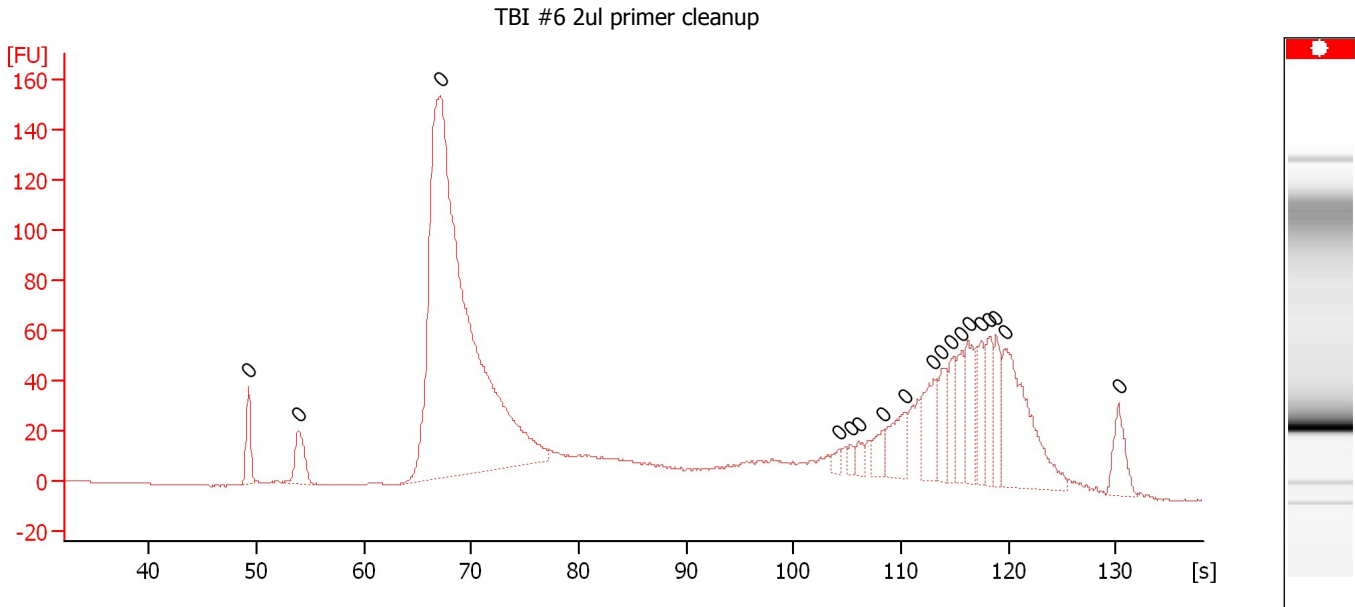
Peak	Size [bp]	Conc. [pg/μl]	Molarity [pmol/l]	Observations	Aligned Migration Time [s]
1	0	0.00	0.0		49.05
2	0	0.00	0.0		51.45
3	0	0.00	0.0		61.65
4	0	0.00	0.0		131.25



Assay Class: High Sensitivity DNA Assay  
 Data Path: C:\...ents and Settings\Bioanalyzer\2015-07-21\2015-07-21\_002.xad

Created: 7/21/2015 12:29:36 PM  
 Modified: 7/21/2015 1:10:55 PM

**Electropherogram Summary Continued ...**



**Overall Results for sample 9 : TBI #6 2ul primer cleanup**

Number of peaks found: 0                      Noise: 0.1

**Peak table for sample 9 : TBI #6 2ul primer cleanup**

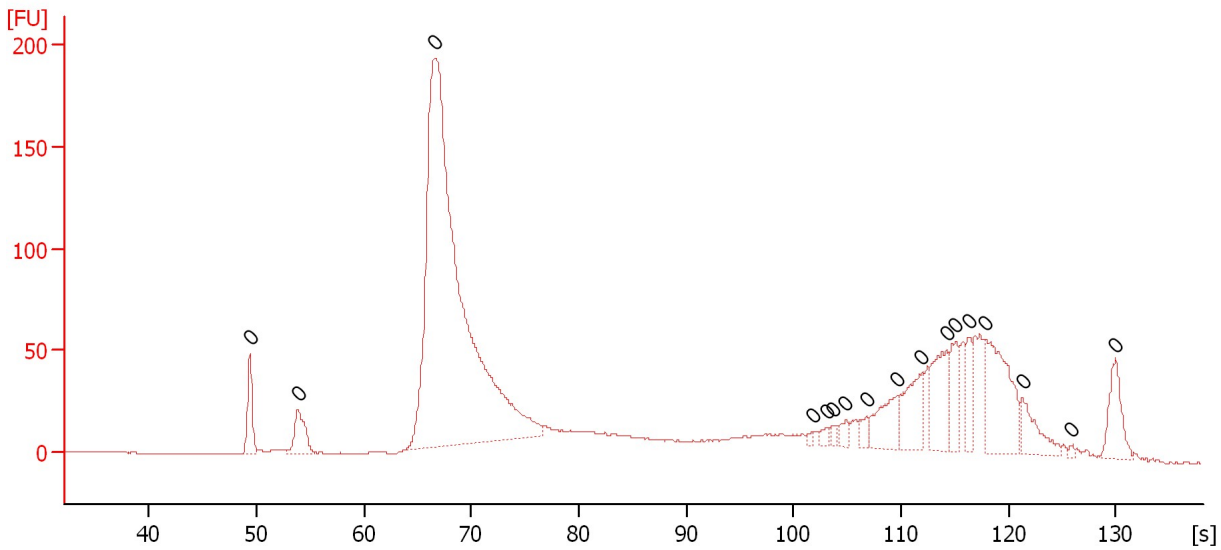
Peak	Size [bp]	Conc. [pg/μl]	Molarity [pmol/l]	Observations	Aligned Migration Time [s]
1	0	0.00	0.0		49.25
2	0	0.00	0.0		53.90
3	0	0.00	0.0		67.10
4	0	0.00	0.0		104.20
5	0	0.00	0.0		105.25
6	0	0.00	0.0		106.00
7	0	0.00	0.0		108.35
8	0	0.00	0.0		110.30
9	0	0.00	0.0		113.05
10	0	0.00	0.0		113.80
11	0	0.00	0.0		114.70
12	0	0.00	0.0		115.65
13	0	0.00	0.0		116.25
14	0	0.00	0.0		117.45
15	0	0.00	0.0		118.25
16	0	0.00	0.0		118.85
17	0	0.00	0.0		119.70
18	0	0.00	0.0		130.25

Assay Class: High Sensitivity DNA Assay  
 Data Path: C:\...ents and Settings\Bioanalyzer\2015-07-21\2015-07-21\_002.xad

Created: 7/21/2015 12:29:36 PM  
 Modified: 7/21/2015 1:10:55 PM

**Electropherogram Summary Continued ...**

TBI #6 3ul primer cleanup



**Overall Results for sample 10 : TBI #6 3ul primer cleanup**

Number of peaks found: 0                      Noise: 0.2

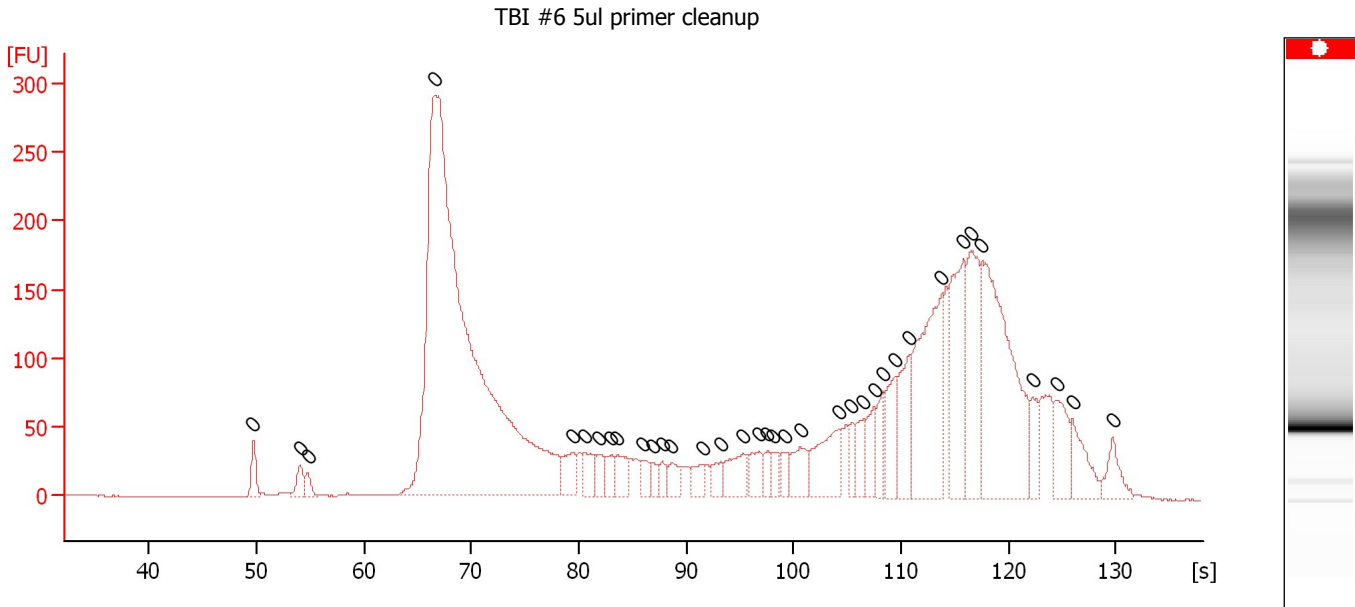
**Peak table for sample 10 : TBI #6 3ul primer cleanup**

Peak	Size [bp]	Conc. [pg/μl]	Molarity [pmol/l]	Observations	Aligned Migration Time [s]
1	0	0.00	0.0		49.35
2	0	0.00	0.0		53.85
3	0	0.00	0.0		66.55
4	0	0.00	0.0		101.80
5	0	0.00	0.0		103.10
6	0	0.00	0.0		103.70
7	0	0.00	0.0		104.85
8	0	0.00	0.0		106.80
9	0	0.00	0.0		109.65
10	0	0.00	0.0		111.95
11	0	0.00	0.0		114.20
12	0	0.00	0.0		115.10
13	0	0.00	0.0		116.35
14	0	0.00	0.0		117.85
15	0	0.00	0.0		121.30
16	0	0.00	0.0		125.85
17	0	0.00	0.0		129.90

Assay Class: High Sensitivity DNA Assay  
 Data Path: C:\...ents and Settings\Bioanalyzer\2015-07-21\2015-07-21\_002.xad

Created: 7/21/2015 12:29:36 PM  
 Modified: 7/21/2015 1:10:55 PM

**Electropherogram Summary Continued ...**



**Overall Results for sample 11 : TBI #6 5ul primer cleanup**

Number of peaks found: 0                      Noise: 0.2

**Peak table for sample 11 : TBI #6 5ul primer cleanup**

Peak	Size [bp]	Conc. [pg/μl]	Molarity [pmol/l]	Observations	Aligned Migration Time [s]
1	0	0.00	0.0		49.70
2	0	0.00	0.0		54.05
3	0	0.00	0.0		54.75
4	0	0.00	0.0		66.60
5	0	0.00	0.0		79.45
6	0	0.00	0.0		80.55
7	0	0.00	0.0		81.85
8	0	0.00	0.0		82.95
9	0	0.00	0.0		83.60
10	0	0.00	0.0		85.95
11	0	0.00	0.0		86.80
12	0	0.00	0.0		87.80
13	0	0.00	0.0		88.65
14	0	0.00	0.0		91.50
15	0	0.00	0.0		93.20
16	0	0.00	0.0		95.30
17	0	0.00	0.0		96.80
18	0	0.00	0.0		97.60
19	0	0.00	0.0		98.15
20	0	0.00	0.0		99.20
21	0	0.00	0.0		100.60
22	0	0.00	0.0		104.20
23	0	0.00	0.0		105.40
24	0	0.00	0.0		106.55
25	0	0.00	0.0		107.50
26	0	0.00	0.0		108.30
27	0	0.00	0.0		109.40

Assay Class: High Sensitivity DNA Assay  
Data Path: C:\...ents and Settings\Bioanalyzer\2015-07-21\2015-07-21\_002.xad

Created: 7/21/2015 12:29:36 PM  
Modified: 7/21/2015 1:10:55 PM

**Electropherogram Summary Continued ...**

... Peak table for sample 11 : TBI #6 5ul primer cleanup

Peak	Size [bp]	Conc. [pg/ $\mu$ l]	Molarity [pmol/l]	Observations	Aligned Migration Time [s]
28	0	0.00	0.0		110.80
29	0	0.00	0.0		113.75
30	0	0.00	0.0		115.80
31	0	0.00	0.0		116.50
32	0	0.00	0.0		117.45
33	0	0.00	0.0		122.25
34	0	0.00	0.0		124.45
35	0	0.00	0.0		125.95
36	0	0.00	0.0		129.70

Assay Class: High Sensitivity DNA Assay  
Data Path: C:\...ents and Settings\Bioanalyzer\2015-07-21\2015-07-21\_002.xad

Created: 7/21/2015 12:29:36 PM  
Modified: 7/21/2015 1:10:55 PM

Gel Image

