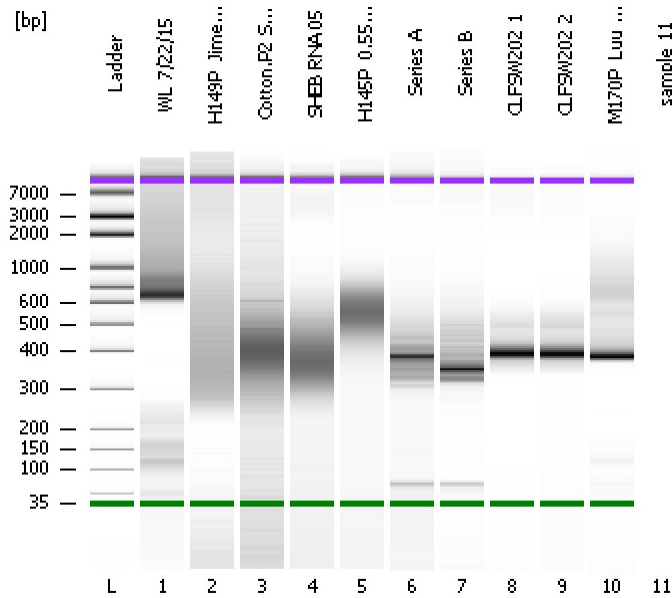


Assay Class: High Sensitivity DNA Assay
Data Path: C:\...ents and Settings\Bioanalyzer\2015-07-24\2015-07-24_001.xad

Created: 7/24/2015 1:53:05 PM
Modified: 7/24/2015 2:45:19 PM

Electrophoresis File Run Summary



Instrument Information:

Instrument Name: DE13701086 Firmware: C.01.069
Serial#: DE13701086 Type: G2938B

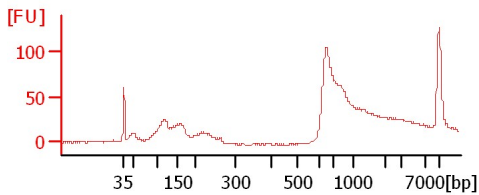
Assay Information:

Assay Origin Path: C:\Program Files\Agilent\2100 bioanalyzer\2100 expert\assays\dsDNA\High Sensitivity DNA.xsy
Assay Class: High Sensitivity DNA Assay
Version: 1.03
Assay Comments: Copyright © 2003-2010 Agilent Technologies

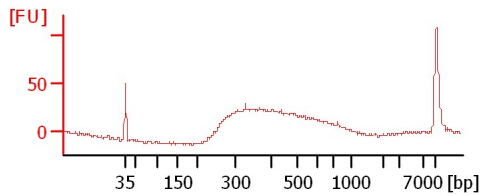
Chip Information:

Chip Lot #:
Reagent Kit Lot #:
Chip Comments:

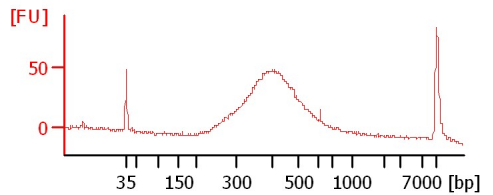
WL 7/22/15



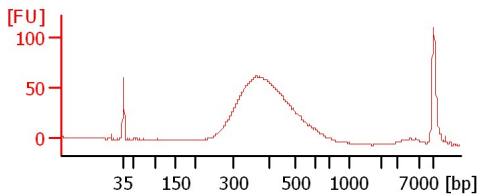
H149P_Jimenez clean



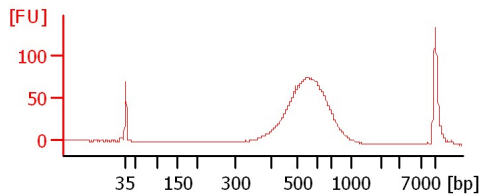
Cotton.P2 Set 2



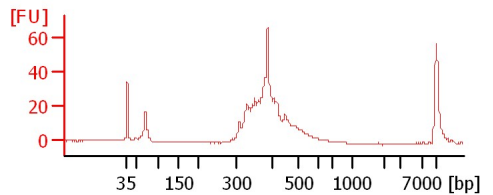
SHEB RNA 05



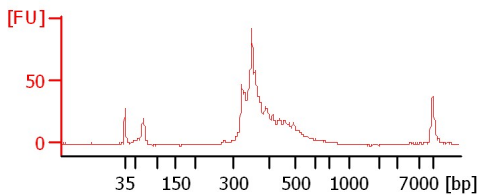
H145P_0.55X PCR



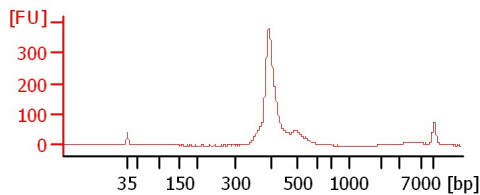
Series A



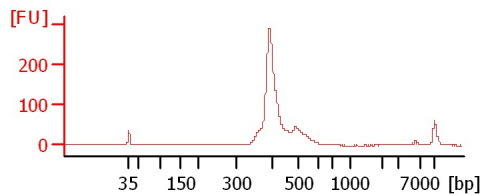
Series B



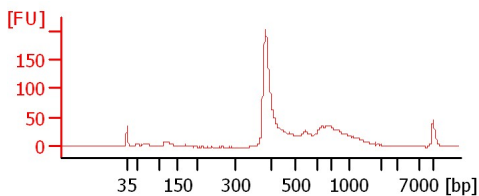
CLFSW202 1



CLFSW202 2



M170P_Luu 1:10



Assay Class: High Sensitivity DNA Assay
Data Path: C:\...ents and Settings\Bioanalyzer\2015-07-24\2015-07-24_001.xad

Created: 7/24/2015 1:53:05 PM
Modified: 7/24/2015 2:45:19 PM

Electrophoresis File Run Summary (Chip Summary)

Sample Name	Sample Comment	Rest. Digest	Status	Observation	Result Label	Result Color
WL 7/22/15		<input type="checkbox"/>	✓			
H149P_Jimenez clean		<input type="checkbox"/>	✓			
Cotton.P2 Set 2		<input type="checkbox"/>	✓			
SHEB RNA 05		<input type="checkbox"/>	✓			
H145P_0.55X PCR		<input type="checkbox"/>	✓			
Series A		<input type="checkbox"/>	✓			
Series B		<input type="checkbox"/>	✓			
CLFSW202 1		<input type="checkbox"/>	✓			
CLFSW202 2		<input type="checkbox"/>	✓			
M170P_Luu 1:10		<input type="checkbox"/>	✓			
sample 11		<input type="checkbox"/>	✓			
Ladder		<input type="checkbox"/>	✓			

Chip Lot #

Reagent Kit Lot #

Chip Comments :

Assay Class: High Sensitivity DNA Assay
Data Path: C:\...ents and Settings\Bioanalyzer\2015-07-24\2015-07-24_001.xad

Created: 7/24/2015 1:53:05 PM
Modified: 7/24/2015 2:45:19 PM

Electrophoresis Assay Details

General Analysis Settings

Number of Available Sample and Ladder Wells (Max.) : 12
Minimum Visible Range [s] : 32
Maximum Visible Range [s] : 138
Start Analysis Time Range [s] : 33
End Analysis Time Range [s] : 137.5
Ladder Concentration [pg/μl] : 1950
Uses Standard Area for Ladder Fragments
Lower Marker Concentration [pg/μl] : 125
Upper Marker Concentration [pg/μl] : 75
Used Upper Marker for Quantitation
Standard Curve Fit is Point to Point
Show Data Aligned to Lower and Upper Marker

Integrator Settings

Integration Start Time [s] : 33.05
Integration End Time [s] : 137
Slope Threshold : 0.8
Height Threshold [FU] : 5
Area Threshold : 0.1
Width Threshold [s] : 0.6
Baseline Plateau [s] : 0.5

Filter Settings

Filter Width [s] : 0.5
Polynomial Order : 4

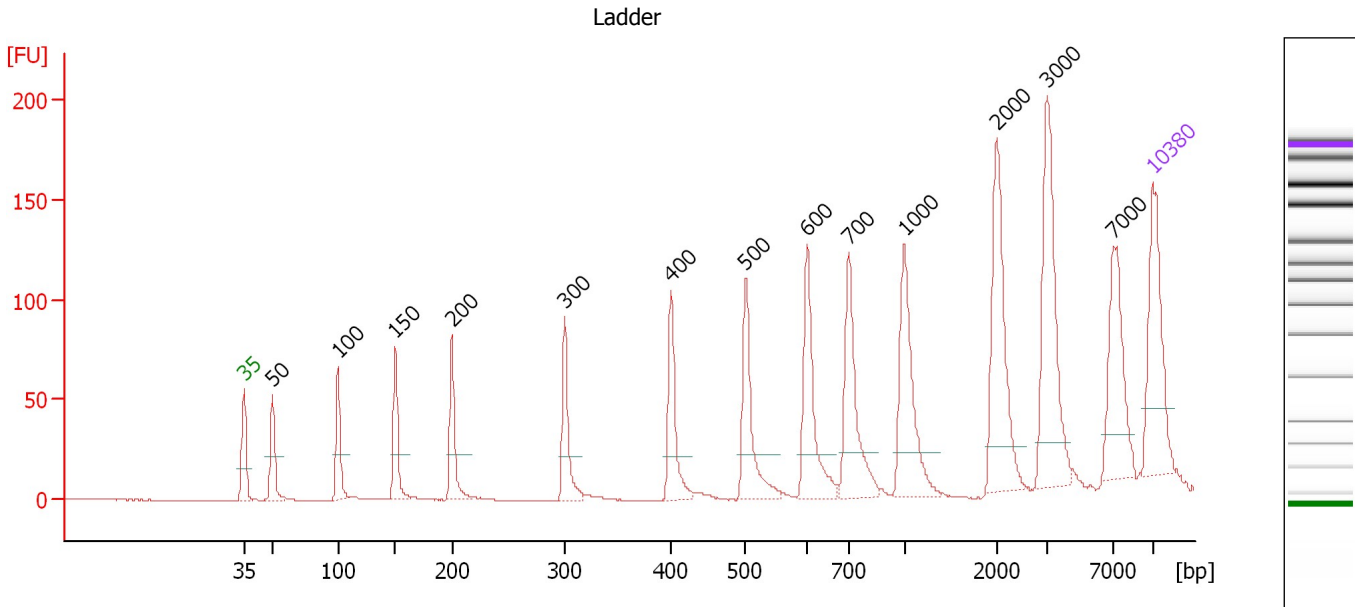
Ladder

Ladder Peak	Size	Area
1	35	160
2	50	210
3	100	208
4	150	221
5	200	242
6	300	270
7	400	305
8	500	306
9	600	336
10	700	321
11	1000	366
12	2000	413
13	3000	411
14	7000	400
15	10380	214

Assay Class: High Sensitivity DNA Assay
 Data Path: C:\...ents and Settings\Bioanalyzer\2015-07-24\2015-07-24_001.xad

Created: 7/24/2015 1:53:05 PM
 Modified: 7/24/2015 2:45:19 PM

Electropherogram Summary



Overall Results for Ladder

Noise: 0.1

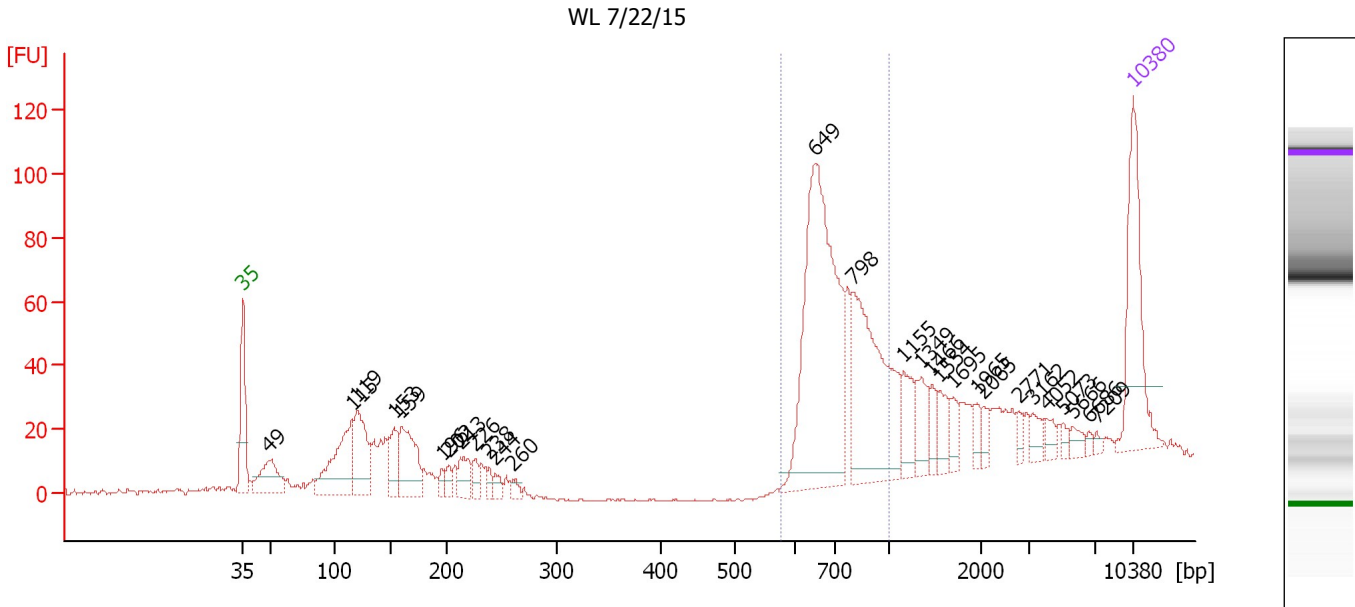
Peak table for Ladder

Peak	Size [bp]	Conc. [pg/μl]	Molarity [pmol/l]	Observations	Aligned Migration Time [s]
1	35	125.00	5,411.3	Lower Marker	43.00
2	50	150.00	4,545.5	Ladder Peak	45.18
3	100	150.00	2,272.7	Ladder Peak	50.23
4	150	150.00	1,515.2	Ladder Peak	54.67
5	200	150.00	1,136.4	Ladder Peak	59.02
6	300	150.00	757.6	Ladder Peak	67.73
7	400	150.00	568.2	Ladder Peak	75.90
8	500	150.00	454.5	Ladder Peak	81.66
9	600	150.00	378.8	Ladder Peak	86.38
10	700	150.00	324.7	Ladder Peak	89.58
11	1,000	150.00	227.3	Ladder Peak	93.86
12	2,000	150.00	113.6	Ladder Peak	101.00
13	3,000	150.00	75.8	Ladder Peak	104.87
14	7,000	150.00	32.5	Ladder Peak	109.96
15	10,380	75.00	10.9	Upper Marker	113.00

Assay Class: High Sensitivity DNA Assay
 Data Path: C:\...ents and Settings\Bioanalyzer\2015-07-24\2015-07-24_001.xad

Created: 7/24/2015 1:53:05 PM
 Modified: 7/24/2015 2:45:19 PM

Electropherogram Summary Continued ...



Overall Results for sample 1 : WL 7/22/15

Number of peaks found: 28 Corr. Area 1: 463.6
 Noise: 0.3

Peak table for sample 1 : WL 7/22/15

Peak	Size [bp]	Conc. [pg/μl]	Molarity [pmol/l]	Observations	Aligned Migration Time [s]
1	35	125.00	5,411.3	Lower Marker	43.00
2	49	55.09	1,698.0		45.06
3	115	103.20	1,354.8		51.60
4	119	75.83	963.9		51.93
5	153	39.04	387.1		54.91
6	159	73.34	698.5		55.46
7	196	8.70	67.4		58.64
8	202	10.83	81.3		59.19
9	213	24.74	176.4		60.11
10	226	12.50	84.0		61.24
11	238	8.42	53.6		62.33
12	244	9.44	58.6		62.84
13	260	7.56	44.0		64.26
14	649	285.42	666.0		87.96
15	798	161.74	307.1		90.98
16	1,155	26.64	34.9		94.97
17	1,349	23.78	26.7		96.35
18	1,466	12.81	13.2		97.19
19	1,554	16.77	16.3		97.82
20	1,695	12.24	10.9		98.82
21	1,965	7.46	5.8		100.75
22	2,065	8.04	5.9		101.26
23	2,771	6.27	3.4		103.98
24	3,162	9.30	4.5		105.07
25	4,052	7.44	2.8		106.21

Assay Class: High Sensitivity DNA Assay
 Data Path: C:\...ents and Settings\Bioanalyzer\2015-07-24\2015-07-24_001.xad

Created: 7/24/2015 1:53:05 PM
 Modified: 7/24/2015 2:45:19 PM

Electropherogram Summary Continued ...

... Peak table for sample 1 : WL 7/22/15

Peak	Size [bp]	Conc. [pg/μl]	Molarity [pmol/l]	Observations	Aligned Migration Time [s]
26	5,073	4.30	1.3		107.51
27	5,666	6.61	1.8		108.26
28	6,686	2.55	0.6		109.56
29	7,209	2.70	0.6		110.15
30	10,380	75.00	10.9	Upper Marker	113.00

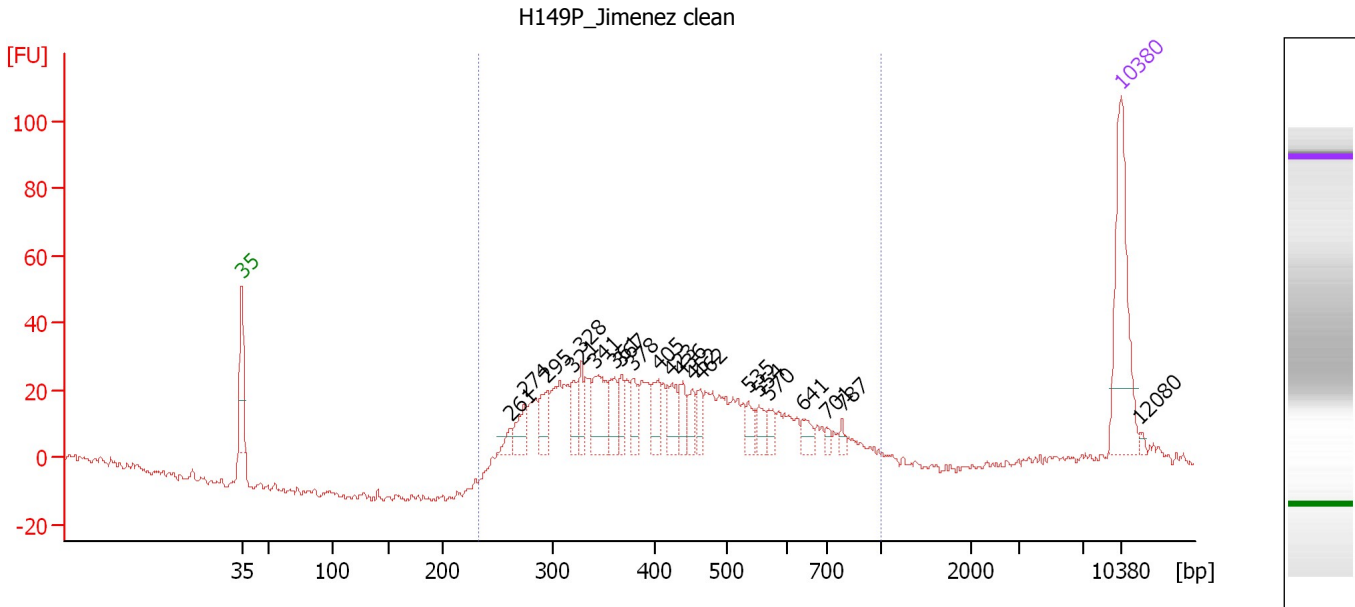
Region table for sample 1 : WL 7/22/15

From [bp]	Average Size [bp]	To [bp]	Corr. Area	Molarity [pmol/l]	Co % of lor Total	Size distribution in CV [%]	Conc. [pg/μl]
577	740	1,000	463.6	802.0	47	14.4	384.25

Assay Class: High Sensitivity DNA Assay
 Data Path: C:\...ents and Settings\Bioanalyzer\2015-07-24\2015-07-24_001.xad

Created: 7/24/2015 1:53:05 PM
 Modified: 7/24/2015 2:45:19 PM

Electropherogram Summary Continued ...



Overall Results for sample 2 : H149P Jimenez clean

Number of peaks found: 21 Corr. Area 1: 669.5
 Noise: 1.0

Peak table for sample 2 : H149P Jimenez clean


Peak	Size [bp]	Conc. [pg/μl]	Molarity [pmol/l]	Observations	Aligned Migration Time [s]
1	35	125.00	5,411.3	Lower Marker	43.00
2	261	8.59	49.8		64.37
3	274	23.98	132.6		65.47
4	295	24.50	125.8		67.30
5	321	20.37	96.2		69.42
6	328	22.33	103.0		70.06
7	341	45.05	200.2		71.08
8	361	26.06	109.3		72.73
9	367	17.95	74.0		73.24
10	378	18.04	72.3		74.13
11	405	21.79	81.6		76.17
12	423	23.42	83.9		77.24
13	436	18.49	64.3		77.96
14	452	15.01	50.3		78.89
15	462	12.98	42.5		79.49
16	535	12.58	35.6		83.31
17	554	12.42	34.0		84.20
18	570	10.38	27.6		84.97
19	641	11.11	26.3		87.68
20	701	4.33	9.4		89.60
21	787	4.71	9.1		90.83
22	10,380	75.00	10.9	Upper Marker	113.00
23	12,080	0.00	0.0		114.53

Assay Class: High Sensitivity DNA Assay
Data Path: C:\...ents and Settings\Bioanalyzer\2015-07-24\2015-07-24_001.xad

Created: 7/24/2015 1:53:05 PM
Modified: 7/24/2015 2:45:19 PM

Electropherogram Summary Continued ...

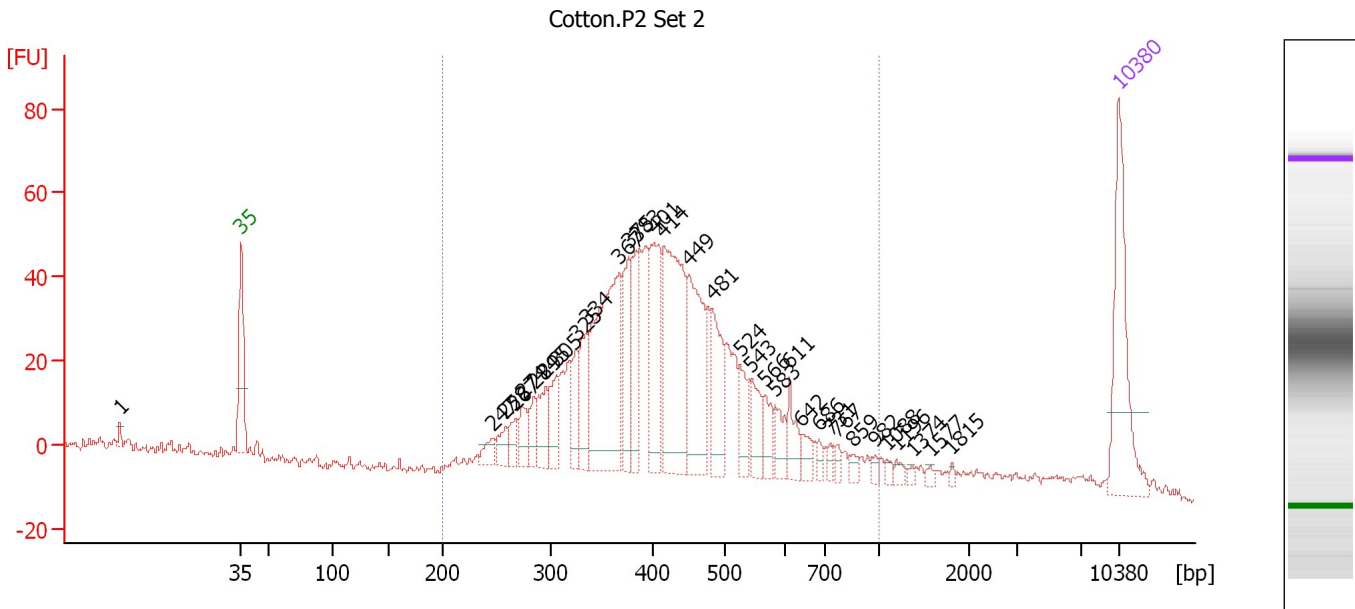
... Region table for sample 2 : H149P Jimenez clean

From [bp]	Average Size [bp]	To [bp]	Corr. Area	Molarity [pmol/l]	Co % of lor Total	Size distribution in CV [%]	Conc. [pg/ μ l]
233	439	1,000	669.5	2,660.4	 97	31.4	684.23

Assay Class: High Sensitivity DNA Assay
 Data Path: C:\...ents and Settings\Bioanalyzer\2015-07-24\2015-07-24_001.xad

Created: 7/24/2015 1:53:05 PM
 Modified: 7/24/2015 2:45:19 PM

Electropherogram Summary Continued ...



Overall Results for sample 3 : Cotton.P2 Set 2

Number of peaks found: 33 Corr. Area 1: 1,101.2
 Noise: 1.1

Peak table for sample 3 : Cotton.P2 Set 2


Peak	Size [bp]	Conc. [pg/μl]	Molarity [pmol/l]	Observations	Aligned Migration Time [s]
1		0.00	0.0		33.30
2	35	125.00	5,411.3	Lower Marker	43.00
3	247	13.85	85.1		63.09
4	258	16.61	97.6		64.06
5	267	16.92	96.1		64.83
6	274	21.14	116.9		65.47
7	284	17.14	91.4		66.36
8	295	32.47	167.0		67.26
9	305	32.39	160.8		68.15
10	325	29.83	139.1		69.77
11	334	45.12	204.5		70.53
12	367	174.43	721.0		73.17
13	375	57.63	232.6		73.89
14	383	49.33	195.0		74.53
15	401	81.08	306.7		75.94
16	414	148.94	545.3		76.70
17	449	103.84	350.7		78.70
18	481	58.51	184.2		80.57
19	524	25.84	74.7		82.79
20	543	27.81	77.6		83.68
21	566	19.85	53.1		84.79
22	583	19.19	49.8		85.60
23	611	21.18	52.5		86.74
24	642	11.40	26.9		87.72
25	686	6.11	13.5		89.13

Assay Class: High Sensitivity DNA Assay
 Data Path: C:\...ents and Settings\Bioanalyzer\2015-07-24\2015-07-24_001.xad


Created: 7/24/2015 1:53:05 PM
 Modified: 7/24/2015 2:45:19 PM

Electropherogram Summary Continued ...

... Peak table for sample 3 : Cotton.P2 Set 2

Peak	Size [bp]	Conc. [pg/μl]	Molarity [pmol/l]	Observations	Aligned Migration Time [s]
26	731	5.70	11.8		90.02
27	767	5.69	11.2		90.53
28	859	5.42	9.6		91.85
29	982	4.21	6.5		93.60
30	1,088	3.91	5.4		94.49
31	1,196	4.78	6.1		95.26
32	1,374	2.29	2.5		96.53
33	1,577	3.10	3.0		97.98
34	1,815	2.22	1.9		99.68
35	 10,380	75.00	10.9	Upper Marker	113.00

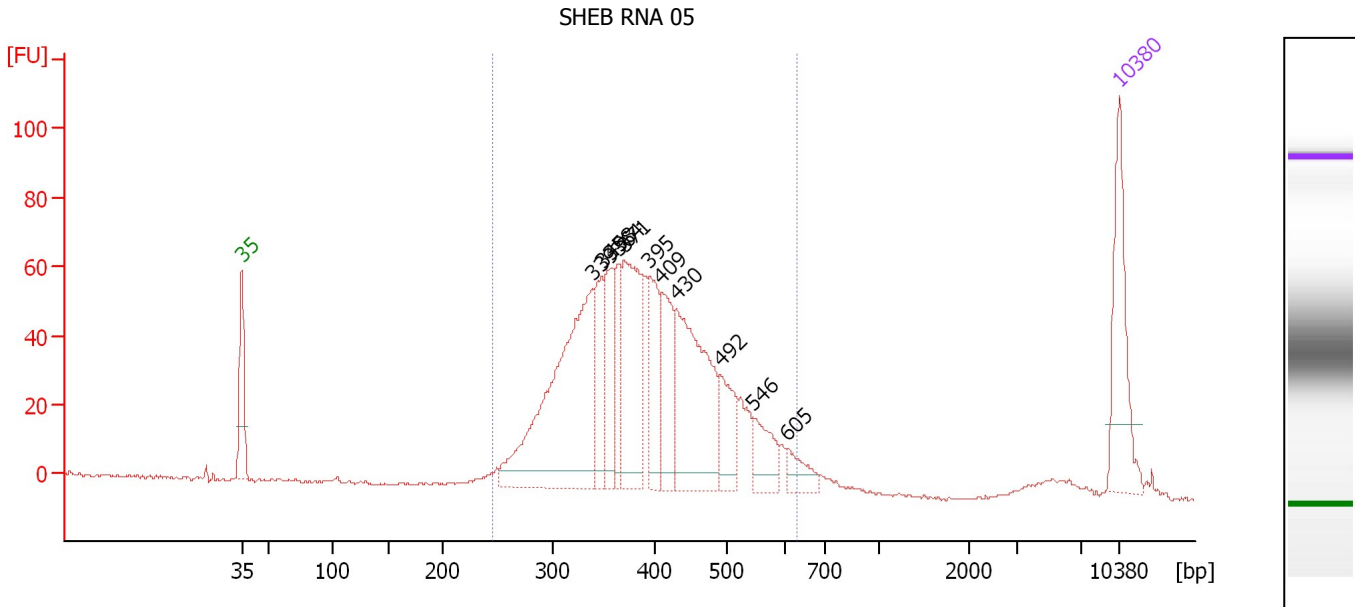
Region table for sample 3 : Cotton.P2 Set 2

From [bp]	Average Size [bp]	To [bp]	Corr. Area	Molarity [pmol/l]	Co % of lor Total	Size distribution in CV [%]	Conc. [pg/μl]
200	434	1,000	1,101.2	4,898.2	 92	28.2	1,279.94

Assay Class: High Sensitivity DNA Assay
 Data Path: C:\...ents and Settings\Bioanalyzer\2015-07-24\2015-07-24_001.xad

Created: 7/24/2015 1:53:05 PM
 Modified: 7/24/2015 2:45:19 PM

Electropherogram Summary Continued ...



Overall Results for sample 4 : SHEB RNA 05

Number of peaks found: 11 Corr. Area 1: 1,206.9
 Noise: 0.3

Peak table for sample 4 : SHEB RNA 05

Peak	Size [bp]	Conc. [pg/μl]	Molarity [pmol/l]	Observations	Aligned Migration Time [s]
1	35	125.00	5,411.3	Lower Marker	43.00
2	339	319.13	1,424.3		70.96
3	349	65.28	283.6		71.72
4	358	71.11	300.8		72.49
5	364	49.06	204.0		73.00
6	371	140.45	574.0		73.51
7	395	74.74	286.6		75.51
8	409	76.69	283.8		76.45
9	430	184.68	650.5		77.64
10	492	56.77	175.0		81.17
11	546	40.20	111.5		83.85
12	605	23.09	57.8		86.53
13	10,380	75.00	10.9	Upper Marker	113.00

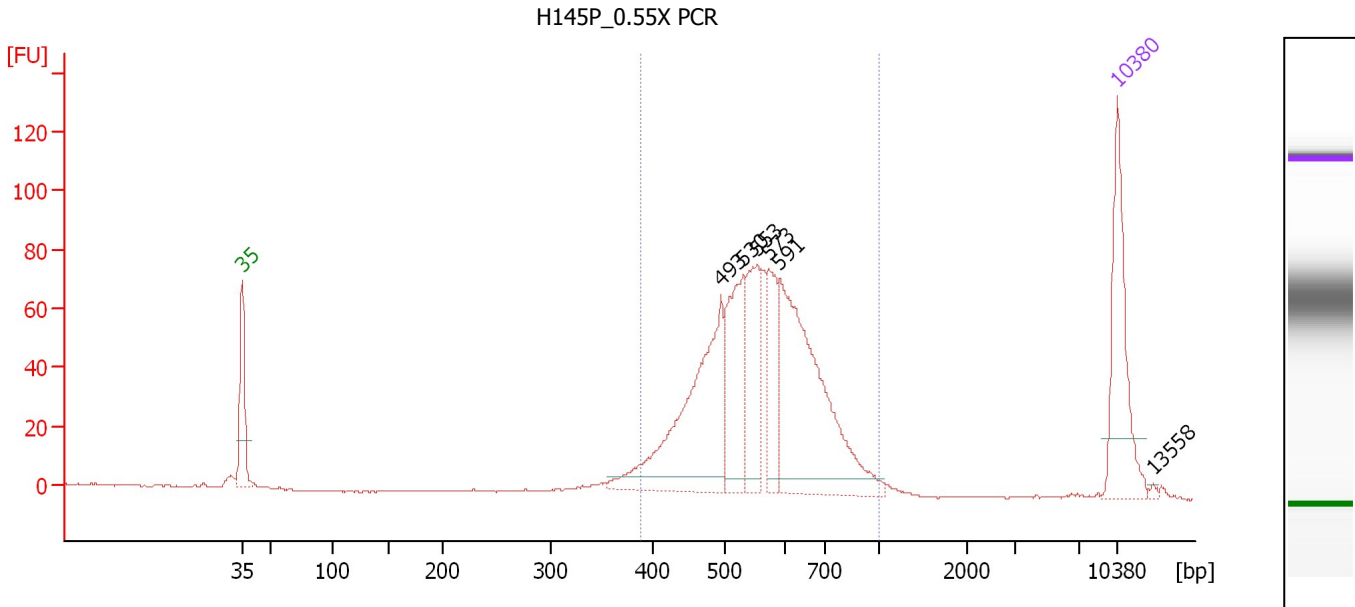
Region table for sample 4 : SHEB RNA 05

From [bp]	Average Size [bp]	To [bp]	Corr. Area	Molarity [pmol/l]	Co % of lor Total	Size distribution in CV [%]	Conc. [pg/μl]
246	399	628	1,206.9	4,685.0	96	19.6	1,172.86

Assay Class: High Sensitivity DNA Assay
 Data Path: C:\...ents and Settings\Bioanalyzer\2015-07-24\2015-07-24_001.xad

Created: 7/24/2015 1:53:05 PM
 Modified: 7/24/2015 2:45:19 PM

Electropherogram Summary Continued ...



Overall Results for sample 5 : H145P 0.55X PCR

Number of peaks found: 6 Corr. Area 1: 974.4
 Noise: 0.2

Peak table for sample 5 : H145P 0.55X PCR

Peak	Size [bp]	Conc. [pg/μl]	Molarity [pmol/l]	Observations	Aligned Migration Time [s]
1	35	125.00	5,411.3	Lower Marker	43.00
2	493	202.68	622.7		81.26
3	530	102.48	293.2		83.05
4	553	73.64	201.7		84.16
5	573	59.74	158.0		85.10
6	591	225.79	578.8		85.96
7	10,380	75.00	10.9	Upper Marker	113.00
8	13,558	0.00	0.0		115.86

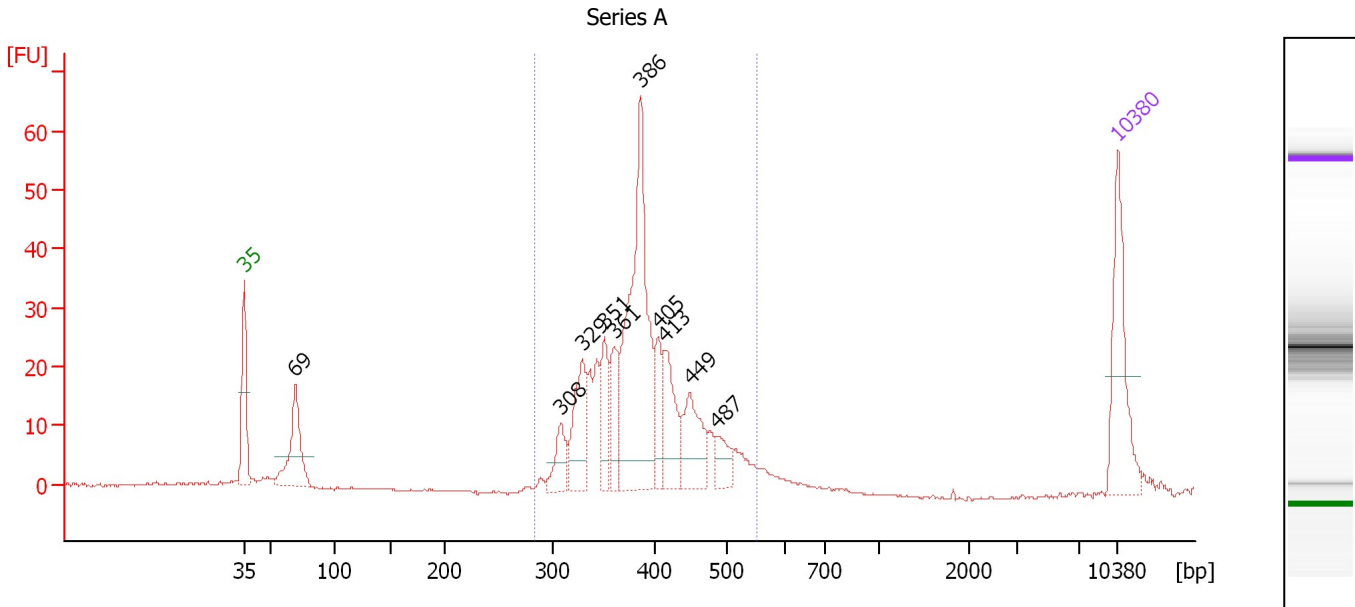
Region table for sample 5 : H145P 0.55X PCR

From [bp]	Average Size [bp]	To [bp]	Corr. Area	Molarity [pmol/l]	Co % of lor Total	Size distribution in CV [%]	Conc. [pg/μl]
387	569	1,000	974.4	1,897.4	95	18.4	684.77

Assay Class: High Sensitivity DNA Assay
 Data Path: C:\...ents and Settings\Bioanalyzer\2015-07-24\2015-07-24_001.xad

Created: 7/24/2015 1:53:05 PM
 Modified: 7/24/2015 2:45:19 PM

Electropherogram Summary Continued ...



Overall Results for sample 6 : Series A

Number of peaks found: 10 Corr. Area 1: 391.3
 Noise: 0.2

Peak table for sample 6 : Series A

Peak	Size [bp]	Conc. [pg/μl]	Molarity [pmol/l]	Observations	Aligned Migration Time [s]
1	35	125.00	5,411.3	Lower Marker	43.00
2	69	96.51	2,118.4		47.10
3	308	36.47	179.5		68.37
4	329	75.29	346.5		70.12
5	351	47.22	204.0		71.87
6	361	48.67	204.5		72.68
7	386	261.85	1,027.3		74.78
8	405	35.95	134.5		76.18
9	413	63.81	234.1		76.65
10	449	62.16	209.9		78.70
11	487	24.58	76.5		80.88
12	10,380	75.00	10.9	Upper Marker	113.00

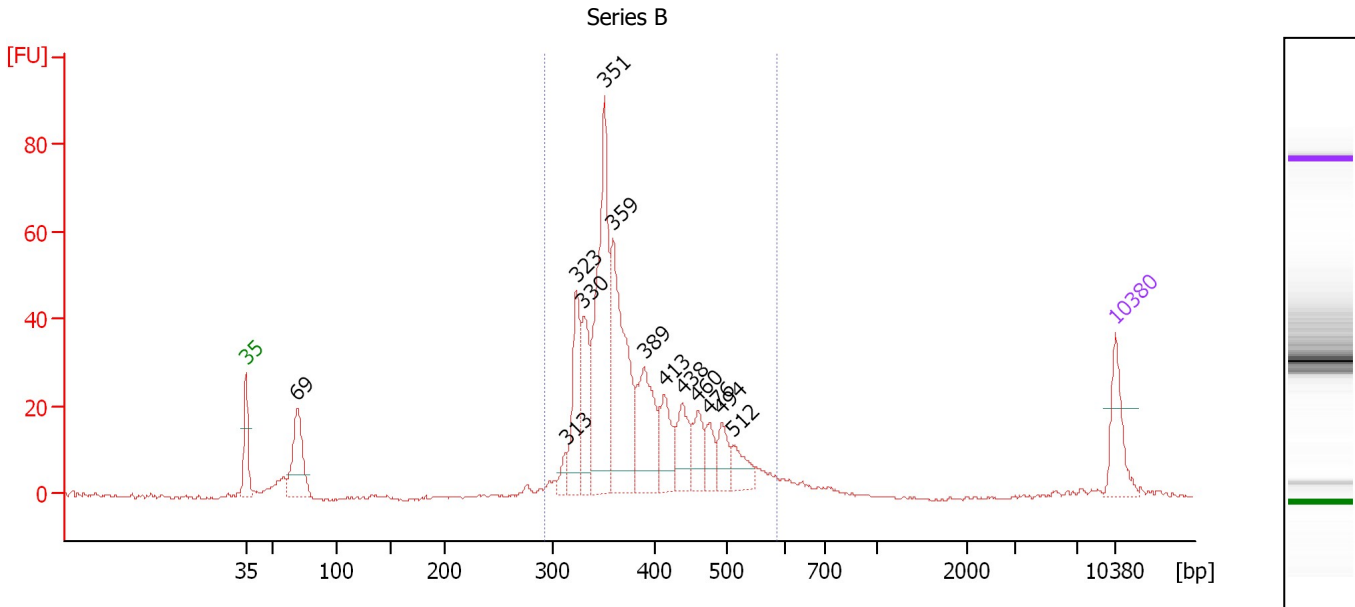
Region table for sample 6 : Series A

From [bp]	Average Size [bp]	To [bp]	Corr. Area	Molarity [pmol/l]	Co % of Ior Total	Size distribution in CV [%]	Conc. [pg/μl]
284	391	550	391.3	2,927.0	88	13.3	741.43

Assay Class: High Sensitivity DNA Assay
 Data Path: C:\...ents and Settings\Bioanalyzer\2015-07-24\2015-07-24_001.xad

Created: 7/24/2015 1:53:05 PM
 Modified: 7/24/2015 2:45:19 PM

Electropherogram Summary Continued ...



Overall Results for sample 7 : Series B

Number of peaks found: 13 Corr. Area 1: 568.2
 Noise: 0.3

Peak table for sample 7 : Series B

Peak	Size [bp]	Conc. [pg/μl]	Molarity [pmol/l]	Observations	Aligned Migration Time [s]
1	35	125.00	5,411.3	Lower Marker	43.00
2	69	187.88	4,110.7		47.12
3	313	26.23	127.1		68.77
4	323	172.69	810.9		69.58
5	330	148.21	680.5		70.18
6	351	446.86	1,931.7		71.86
7	359	369.23	1,558.7		72.55
8	389	197.16	767.2		75.04
9	413	95.49	350.1		76.67
10	438	91.59	316.9		78.09
11	460	71.07	233.9		79.37
12	476	52.87	168.3		80.28
13	494	56.38	172.9		81.31
14	512	56.19	166.4		82.21
15	10,380	75.00	10.9	Upper Marker	113.00

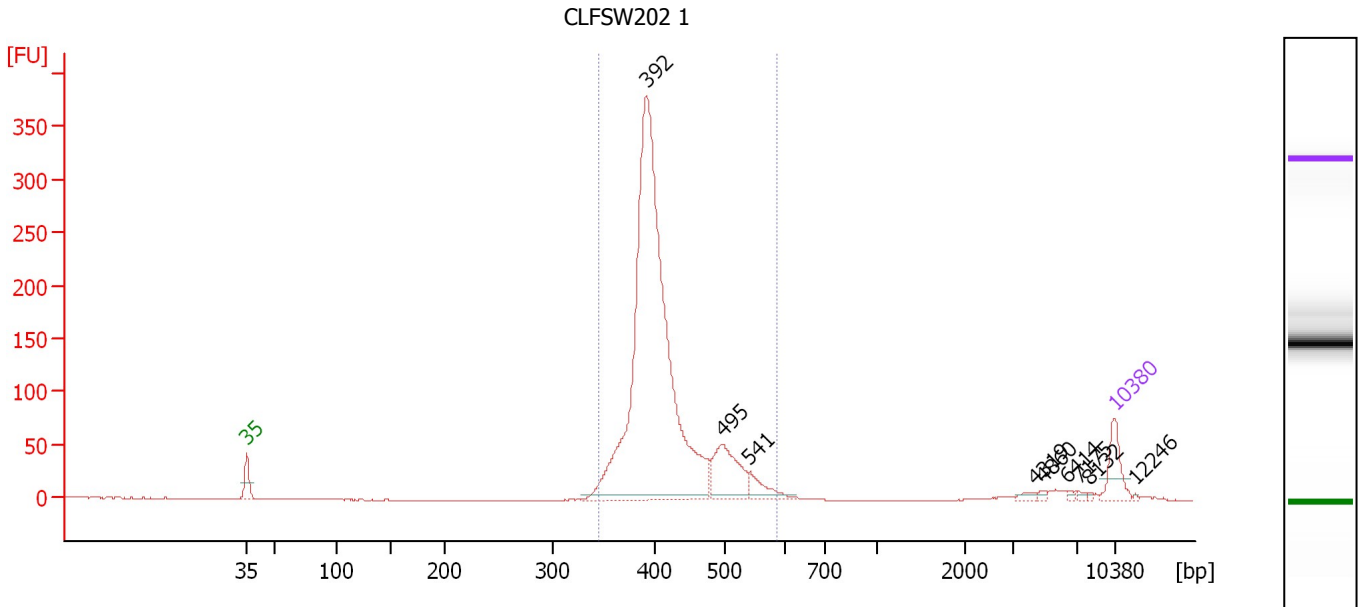
Region table for sample 7 : Series B

From [bp]	Average Size [bp]	To [bp]	Corr. Area	Molarity [pmol/l]	Co % of lor Total	Size distribution in CV [%]	Conc. [pg/μl]
292	389	586	568.2	7,549.6	89	15.9	1,883.84

Assay Class: High Sensitivity DNA Assay
 Data Path: C:\...ents and Settings\Bioanalyzer\2015-07-24\2015-07-24_001.xad

Created: 7/24/2015 1:53:05 PM
 Modified: 7/24/2015 2:45:19 PM

Electropherogram Summary Continued ...



Overall Results for sample 8 : CLFSW202 1

Number of peaks found: 9 Corr. Area 1: 1,660.3
 Noise: 0.3

Peak table for sample 8 : CLFSW202 1

Peak	Size [bp]	Conc. [pg/μl]	Molarity [pmol/l]	Observations	Aligned Migration Time [s]
1	35	125.00	5,411.3	Lower Marker	43.00
2	392	2,179.22	8,429.9		75.22
3	495	218.76	669.4		81.38
4	541	69.16	193.8		83.57
5	4,319	11.83	4.1		106.55
6	4,860	7.32	2.3		107.23
7	6,414	6.97	1.6		109.21
8	7,175	5.23	1.1		110.12
9	8,132	3.74	0.7		110.98
10	10,380	75.00	10.9	Upper Marker	113.00
11	12,246	0.00	0.0		114.68

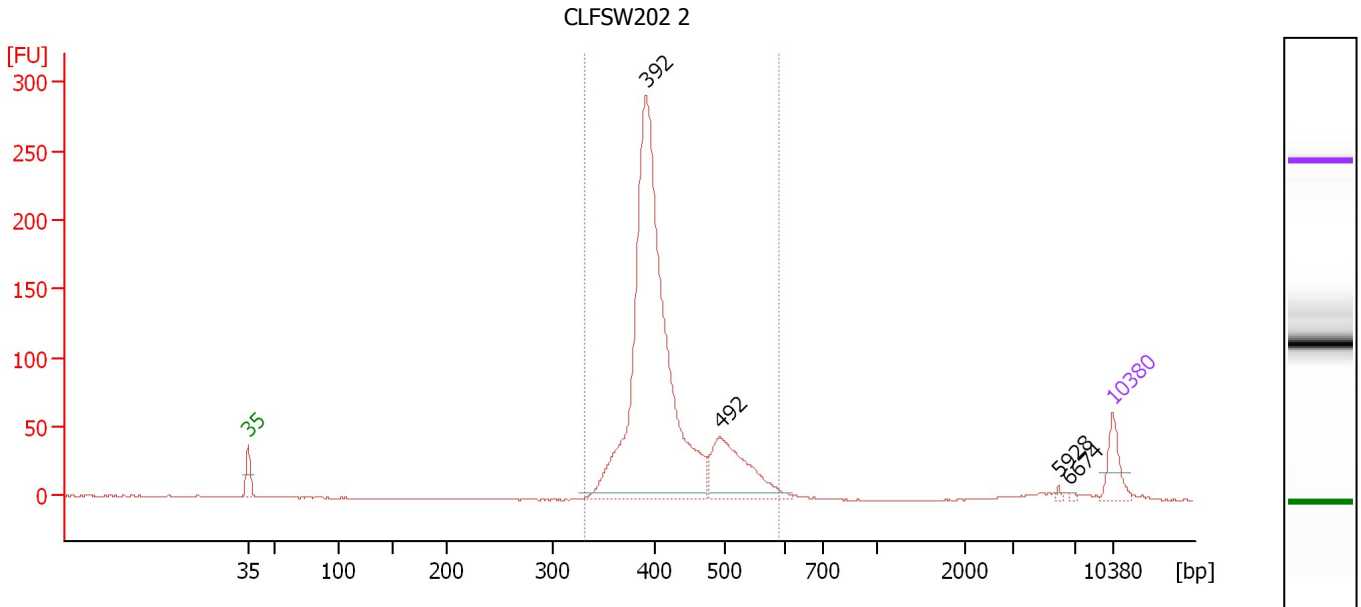
Region table for sample 8 : CLFSW202 1

From [bp]	Average Size [bp]	To [bp]	Corr. Area	Molarity [pmol/l]	Co % of lor Total	Size distribution in CV [%]	Conc. [pg/μl]
345	415	586	1,660.3	8,901.5	96	10.9	2,411.71

Assay Class: High Sensitivity DNA Assay
 Data Path: C:\...ents and Settings\Bioanalyzer\2015-07-24\2015-07-24_001.xad

Created: 7/24/2015 1:53:05 PM
 Modified: 7/24/2015 2:45:19 PM

Electropherogram Summary Continued ...



Overall Results for sample 9 : CLFSW202 2

Number of peaks found: 4 Corr. Area 1: 1,295.7
 Noise: 0.2

Peak table for sample 9 : CLFSW202 2

Peak	Size [bp]	Conc. [pg/μl]	Molarity [pmol/l]	Observations	Aligned Migration Time [s]
1	35	125.00	5,411.3	Lower Marker	43.00
2	392	2,044.37	7,910.8		75.21
3	492	358.29	1,102.6		81.22
4	5,928	4.96	1.3		108.60
5	6,674	3.57	0.8		109.55
6	10,380	75.00	10.9	Upper Marker	113.00

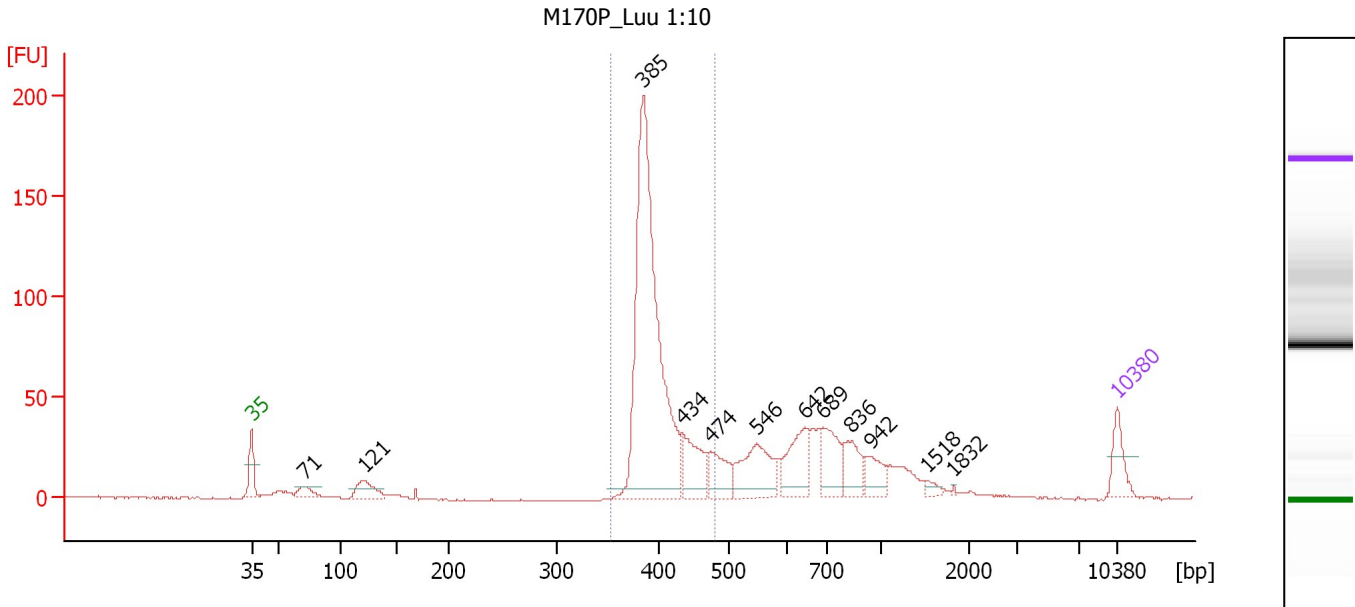
Region table for sample 9 : CLFSW202 2

From [bp]	Average Size [bp]	To [bp]	Corr. Area	Molarity [pmol/l]	Co % of lor Total	Size distribution in CV [%]	Conc. [pg/μl]
332	418	591	1,295.7	8,609.2	97	11.8	2,341.66

Assay Class: High Sensitivity DNA Assay
 Data Path: C:\...ents and Settings\Bioanalyzer\2015-07-24\2015-07-24_001.xad

Created: 7/24/2015 1:53:05 PM
 Modified: 7/24/2015 2:45:19 PM

Electropherogram Summary Continued ...



Overall Results for sample 10 : M170P_Luu 1:10

Number of peaks found: 12 Corr. Area 1: 617.1
 Noise: 0.3

Peak table for sample 10 : M170P_Luu 1:10

Peak	Size [bp]	Conc. [pg/μl]	Molarity [pmol/l]	Observations	Aligned Migration Time [s]
1	35	125.00	5,411.3	Lower Marker	43.00
2	71	55.89	1,190.5		47.31
3	121	109.62	1,371.8		52.10
4	385	1,510.12	5,938.9		74.70
5	434	196.12	685.0		77.85
6	474	136.04	435.3		80.13
7	546	246.05	682.4		83.84
8	642	190.01	448.4		87.73
9	689	159.71	351.2		89.24
10	836	108.08	195.9		91.52
11	942	82.02	131.9		93.03
12	1,518	20.06	20.0		97.56
13	1,832	3.36	2.8		99.80
14	10,380	75.00	10.9	Upper Marker	113.00

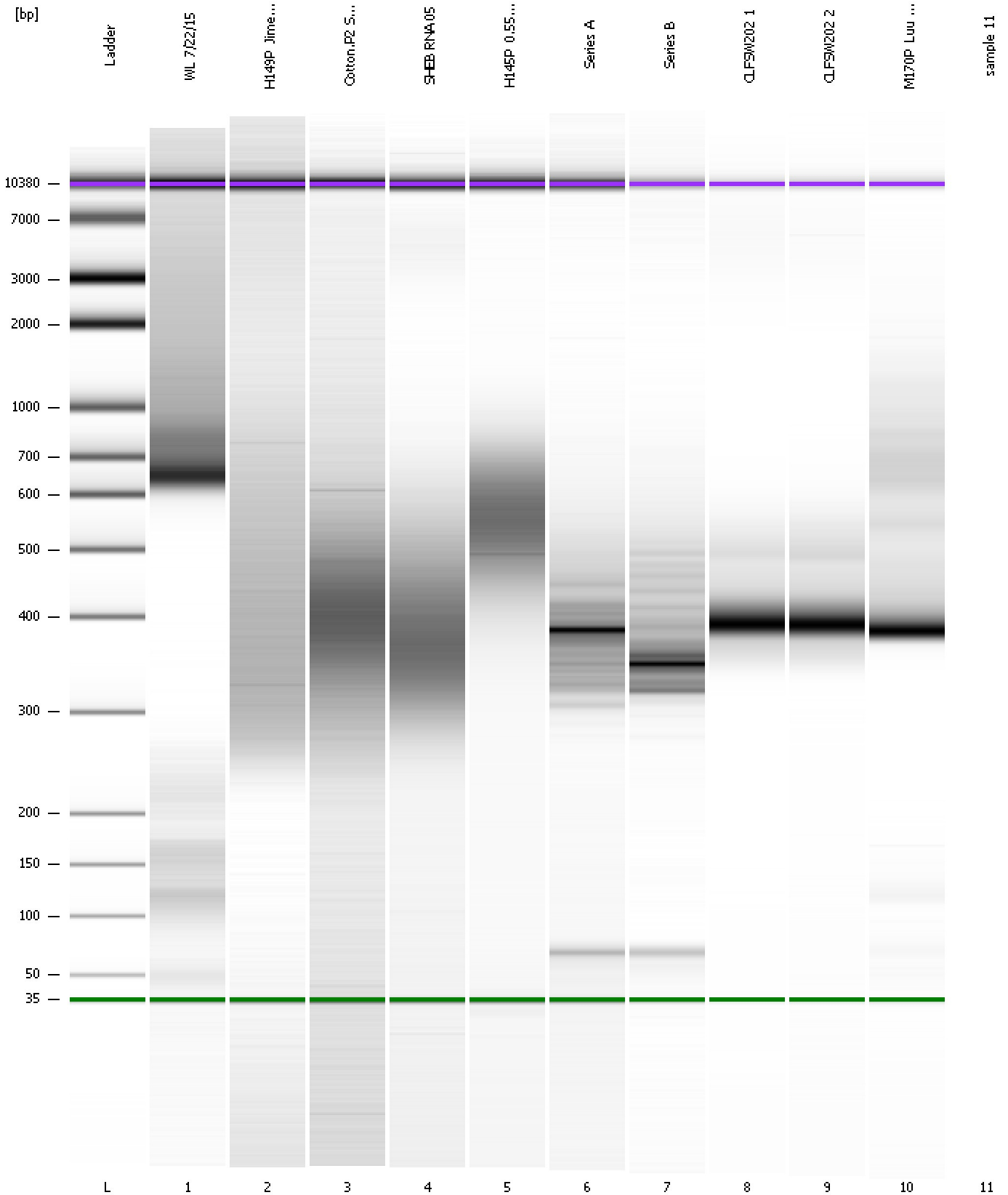
Region table for sample 10 : M170P_Luu 1:10

From [bp]	Average Size [bp]	To [bp]	Corr. Area	Molarity [pmol/l]	Co % of Ior Total	Size distribution in CV [%]	Conc. [pg/μl]
353	402	480	617.1	6,511.8	54	6.4	1,719.11

Assay Class: High Sensitivity DNA Assay
Data Path: C:\...ents and Settings\Bioanalyzer\2015-07-24\2015-07-24_001.xad

Created: 7/24/2015 1:53:05 PM
Modified: 7/24/2015 2:45:19 PM

Gel Image



Assay Class: High Sensitivity DNA Assay
Data Path: C:\...ents and Settings\Bioanalyzer\2015-07-24\2015-07-24_001.xad

Created: 7/24/2015 1:53:05 PM
Modified: 7/24/2015 2:45:19 PM

Invalid Samples

Sample 11 has not been run, no results available.